

Data Path : Z:\pestpcbsrv\HPCHEM1\ECD\_L\Data\PL101521\  
 Data File : PL070323.D  
 Signal(s) : Signal #1: ECD1A.ch Signal #2: ECD2B.ch  
 Acq On : 14 Oct 2021 16:27  
 Operator : AR\AJ  
 Sample : M4194-01  
 Misc :  
 ALS Vial : 15 Sample Multiplier: 1

Instrument :  
 ECD\_L  
 ClientSampleId :  
 VNJ-239

Integration File signal 1: autoint1.e  
 Integration File signal 2: autoint2.e  
 Quant Time: Oct 15 09:55:10 2021  
 Quant Method : Z:\pestpcbsrv\HPCHEM1\ECD\_L\methods\PL092821.M  
 Quant Title : GC Extractables  
 QLast Update : Wed Sep 29 09:19:28 2021  
 Response via : Initial Calibration  
 Integrator: ChemStation

Volume Inj. : 1 µl  
 Signal #1 Phase : ZB-MR2 Signal #2 Phase: ZB-MR1  
 Signal #1 Info : 30M x 0.32mm x0.2 Signal #2 Info : 30M x 0.32mm x0.5µm

Compound	RT#1	RT#2	Resp#1	Resp#2	ng/ml	ng/ml
-----						
System Monitoring Compounds						
1) SA Tetrachlo...	4.626	5.565	9090237	24609121	18.166	18.606
28) SA Decachlor...	10.393	11.490	7815594	15944535	11.295	13.175

Target Compounds

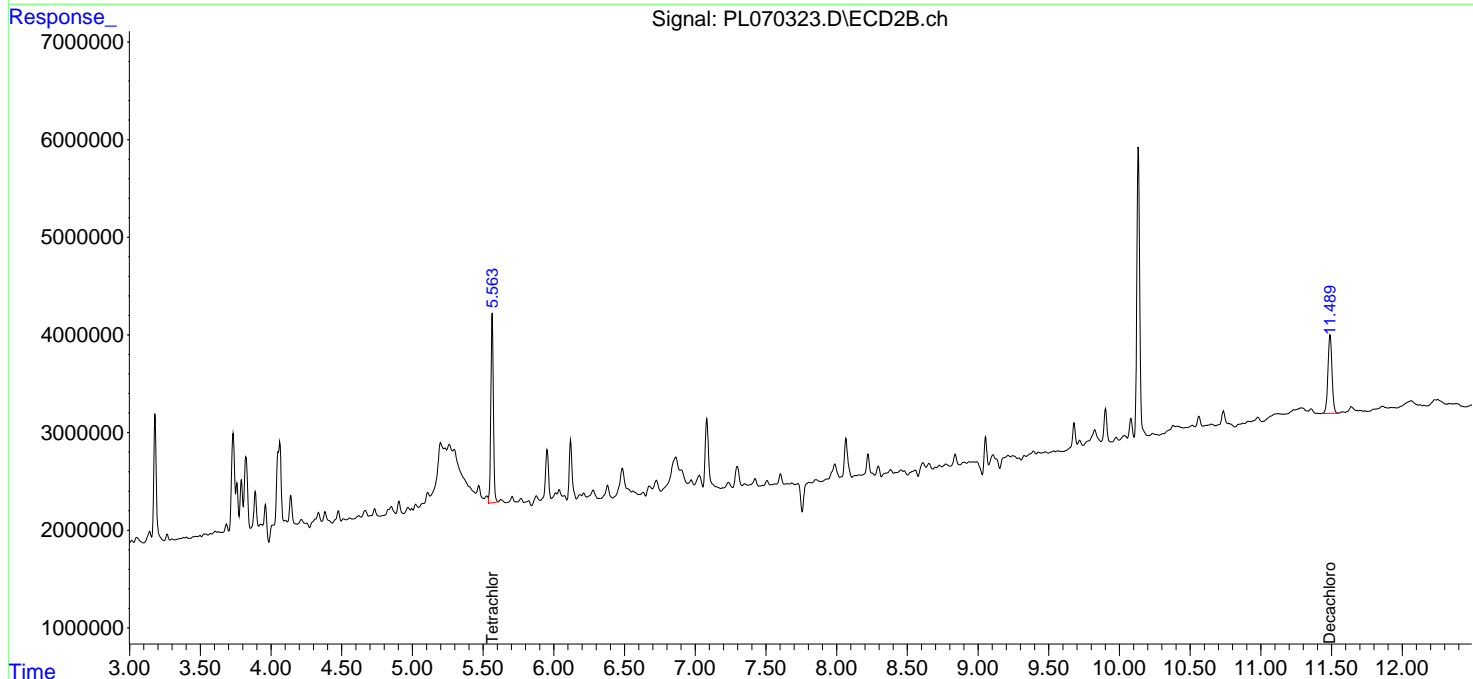
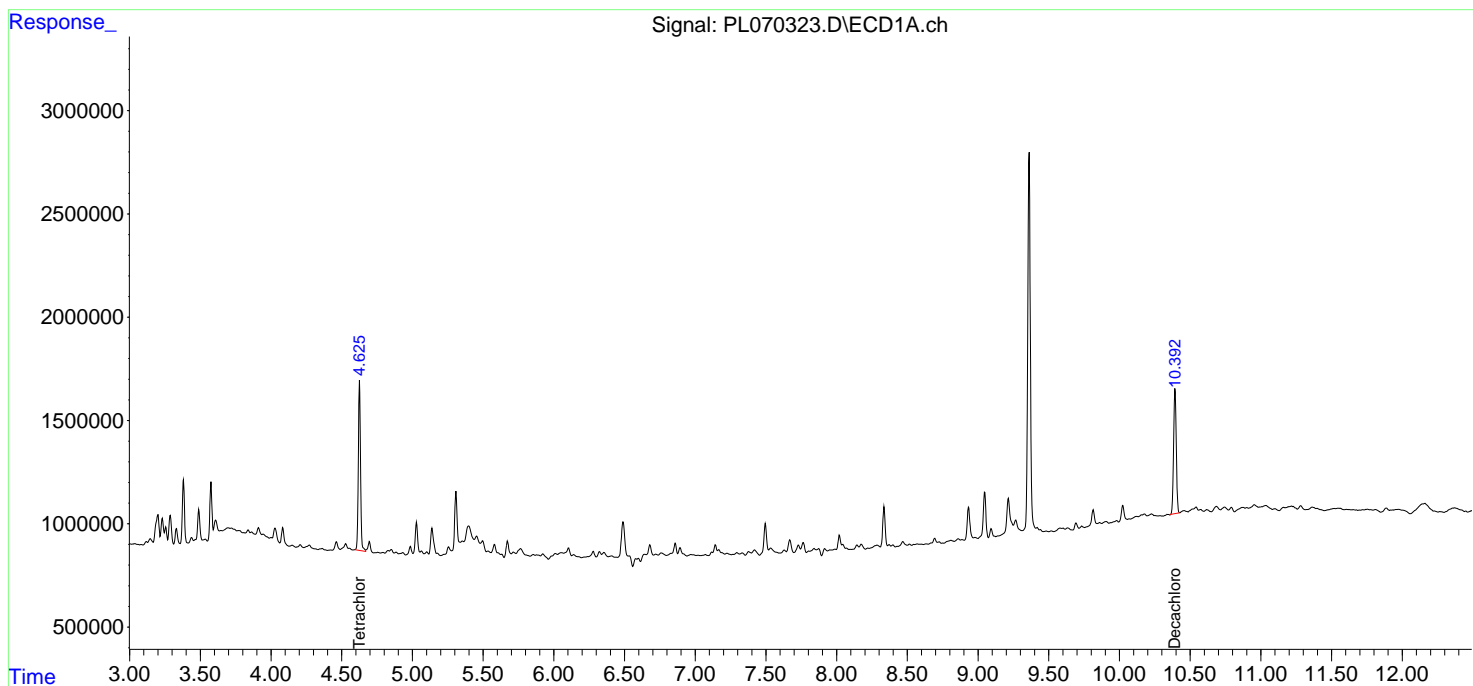
(f)=RT Delta > 1/2 Window (#)=Amounts differ by > 25% (m)=manual int.

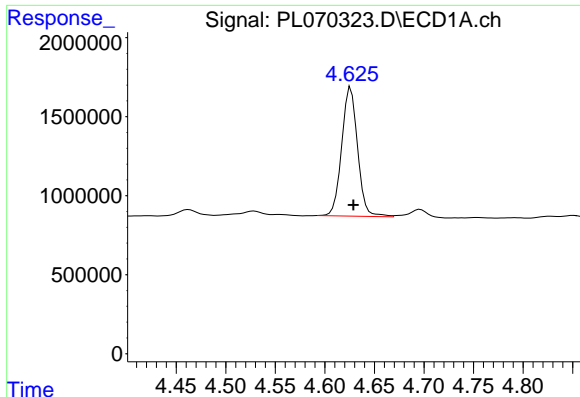
Data Path : Z:\pestpcbsrv\HPCHEM1\ECD\_L\Data\PL101521\  
 Data File : PL070323.D  
 Signal(s) : Signal #1: ECD1A.ch Signal #2: ECD2B.ch  
 Acq On : 14 Oct 2021 16:27  
 Operator : AR\AJ  
 Sample : M4194-01  
 Misc :  
 ALS Vial : 15 Sample Multiplier: 1

Instrument :  
 ECD\_L  
 ClientSampled :  
 VNJ-239

Integration File signal 1: autoint1.e  
 Integration File signal 2: autoint2.e  
 Quant Time: Oct 15 09:55:10 2021  
 Quant Method : Z:\pestpcbsrv\HPCHEM1\ECD\_L\methods\PL092821.M  
 Quant Title : GC Extractables  
 QLast Update : Wed Sep 29 09:19:28 2021  
 Response via : Initial Calibration  
 Integrator: ChemStation

Volume Inj. : 1 µl  
 Signal #1 Phase : ZB-MR2 Signal #2 Phase: ZB-MR1  
 Signal #1 Info : 30M x 0.32mm x0.2 Signal #2 Info : 30M x 0.32mm x0.5µm

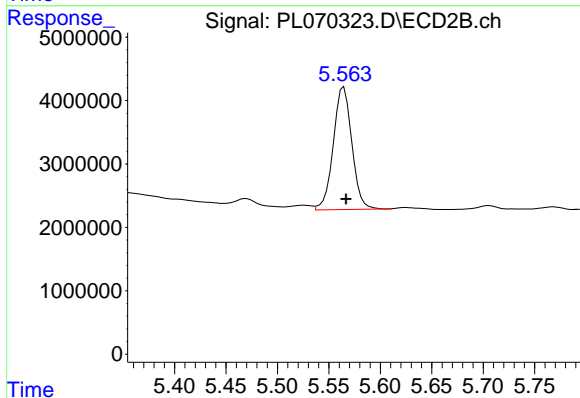




#1 Tetrachloro-m-xylene

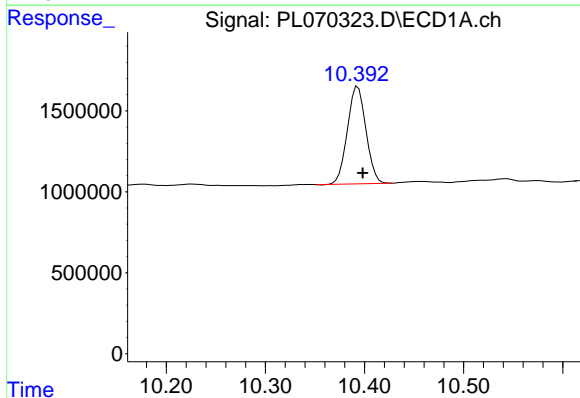
R.T.: 4.626 min  
 Delta R.T.: -0.003 min  
 Response: 9090237  
 Conc: 18.17 ng/ml

Instrument :  
 ECD\_L  
 ClientSampleId :  
 VNJ-239



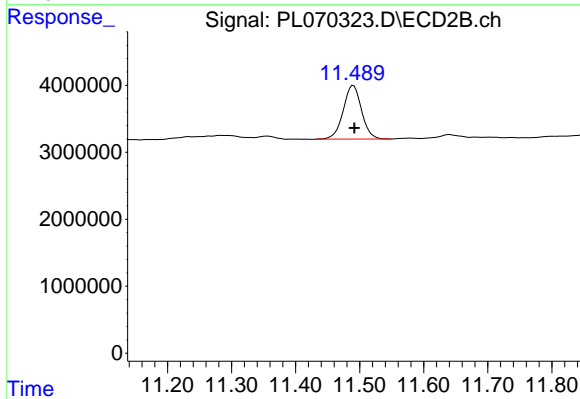
#1 Tetrachloro-m-xylene

R.T.: 5.565 min  
 Delta R.T.: -0.002 min  
 Response: 24609121  
 Conc: 18.61 ng/ml



#28 Decachlorobiphenyl

R.T.: 10.393 min  
 Delta R.T.: -0.005 min  
 Response: 7815594  
 Conc: 11.29 ng/ml



#28 Decachlorobiphenyl

R.T.: 11.490 min  
 Delta R.T.: -0.002 min  
 Response: 15944535  
 Conc: 13.18 ng/ml