

Data Path : Z:\pestpcbsrv\HPCHEM1\ECD\_L\Data\PL101521\  
 Data File : PL070324.D  
 Signal(s) : Signal #1: ECD1A.ch Signal #2: ECD2B.ch  
 Acq On : 14 Oct 2021 16:44  
 Operator : AR\AJ  
 Sample : M4194-03  
 Misc :  
 ALS Vial : 16 Sample Multiplier: 1

**Instrument :**  
 ECD\_L  
**ClientSampled :**  
 VNJ-209

**Manual Integrations**  
**APPROVED**  
 mohammad  
 10/15/2021 2:52:39 PM

Integration File signal 1: autoint1.e  
 Integration File signal 2: autoint2.e  
 Quant Time: Oct 15 09:55:22 2021  
 Quant Method : Z:\pestpcbsrv\HPCHEM1\ECD\_L\methods\PL092821.M  
 Quant Title : GC Extractables  
 QLast Update : Wed Sep 29 09:19:28 2021  
 Response via : Initial Calibration  
 Integrator: ChemStation

Volume Inj. : 1 µl  
 Signal #1 Phase : ZB-MR2 Signal #2 Phase: ZB-MR1  
 Signal #1 Info : 30M x 0.32mm x0.2 Signal #2 Info : 30M x 0.32mm x0.5µm

Compound	RT#1	RT#2	Resp#1	Resp#2	ng/ml	ng/ml
-----						
System Monitoring Compounds						
1) SA Tetrachlo...	4.626	5.565	8961701	24474986	17.910	18.505
28) SA Decachlor...	10.393	11.489	7104024	12784072	10.266	10.564
Target Compounds						
12) B 4,4'-DDE	7.628	8.557	147595	338867	0.232	0.219m
-----						

(f)=RT Delta > 1/2 Window (#)=Amounts differ by > 25% (m)=manual int.

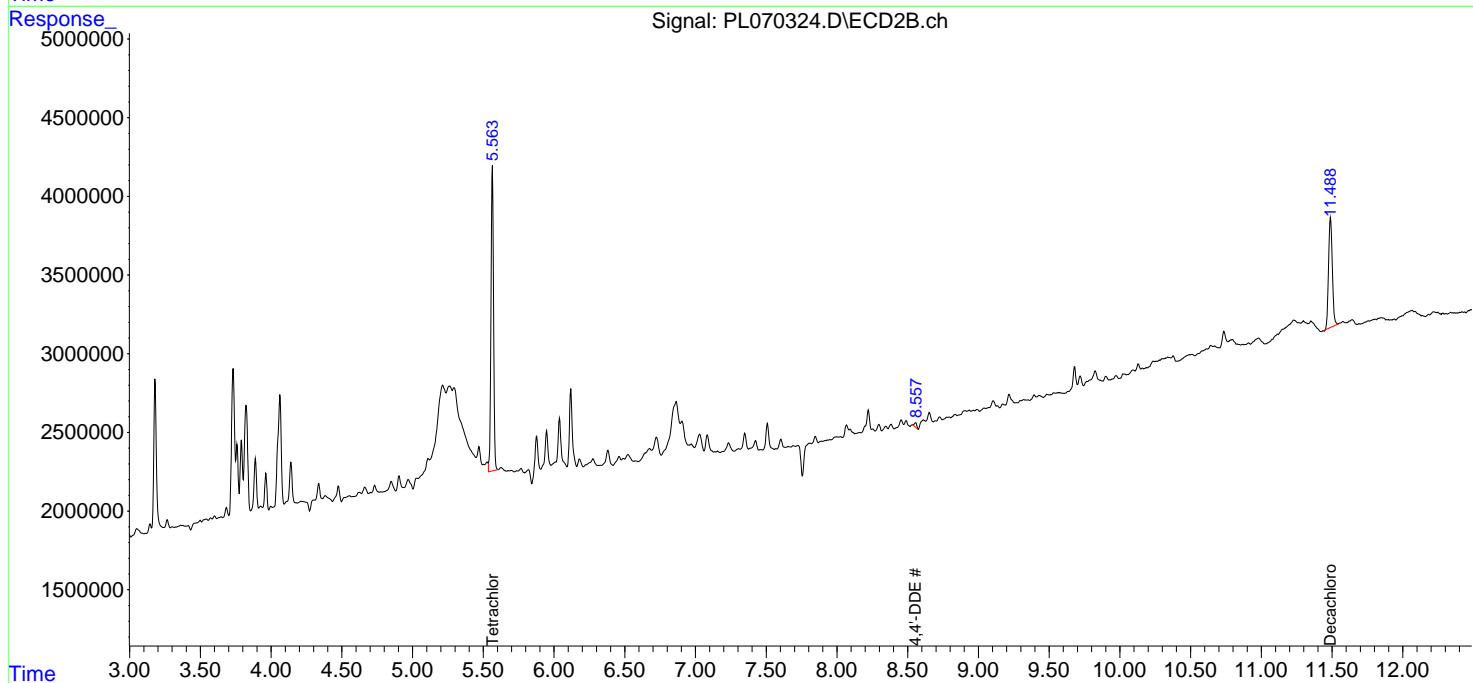
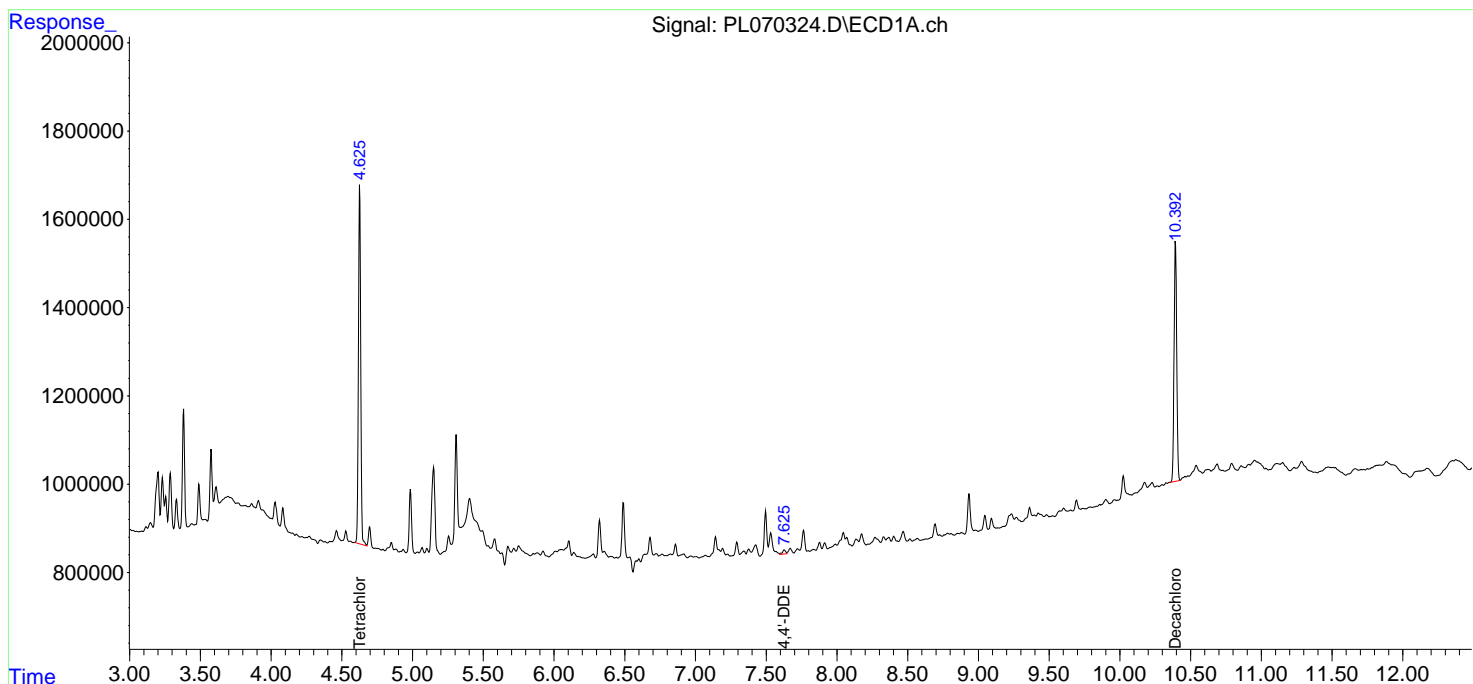
Data Path : Z:\pestpcbsrv\HPCHEM1\ECD\_L\Data\PL101521\  
 Data File : PL070324.D  
 Signal(s) : Signal #1: ECD1A.ch Signal #2: ECD2B.ch  
 Acq On : 14 Oct 2021 16:44  
 Operator : AR\AJ  
 Sample : M4194-03  
 Misc :  
 ALS Vial : 16 Sample Multiplier: 1

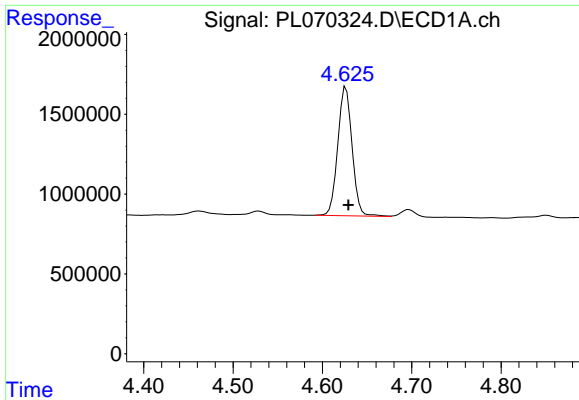
**Instrument :**  
 ECD\_L  
**Client Sampled :**  
 VNJ-209

**Manual Integrations**  
**APPROVED**  
 mohammad  
 10/15/2021 2:52:39 PM

Integration File signal 1: autoint1.e  
 Integration File signal 2: autoint2.e  
 Quant Time: Oct 15 09:55:22 2021  
 Quant Method : Z:\pestpcbsrv\HPCHEM1\ECD\_L\methods\PL092821.M  
 Quant Title : GC Extractables  
 QLast Update : Wed Sep 29 09:19:28 2021  
 Response via : Initial Calibration  
 Integrator: ChemStation

Volume Inj. : 1 µl  
 Signal #1 Phase : ZB-MR2 Signal #2 Phase: ZB-MR1  
 Signal #1 Info : 30M x 0.32mm x0.2 Signal #2 Info : 30M x 0.32mm x0.5µm

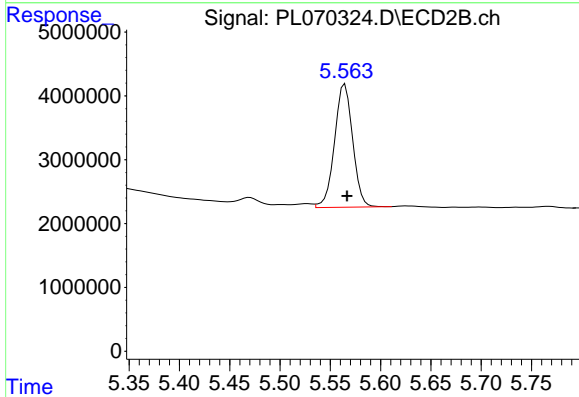




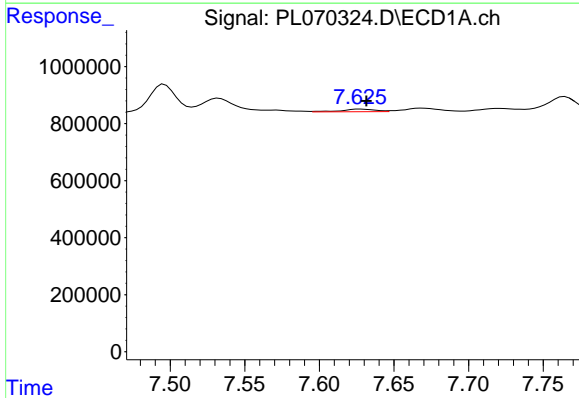
#1 Tetrachloro-m-xylene  
 R.T.: 4.626 min  
 Delta R.T.: -0.003 min  
 Response: 8961701  
 Conc: 17.91 ng/ml

Instrument :  
 ECD\_L  
 ClientSampled :  
 VNJ-209

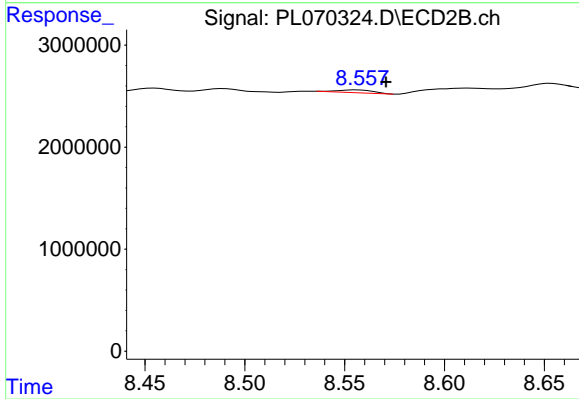
Manual Integrations  
 APPROVED  
 mohammad  
 10/15/2021 2:52:39 PM



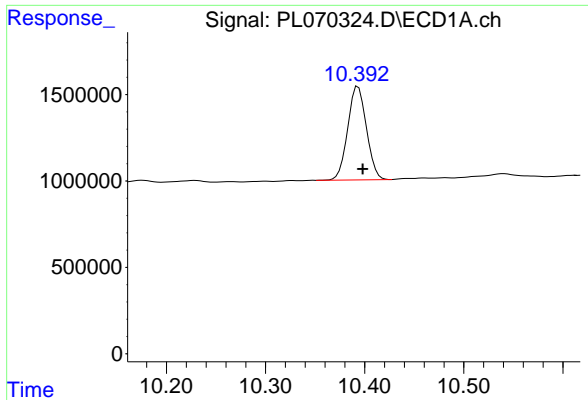
#1 Tetrachloro-m-xylene  
 R.T.: 5.565 min  
 Delta R.T.: -0.002 min  
 Response: 24474986  
 Conc: 18.50 ng/ml



#12 4,4'-DDE  
 R.T.: 7.628 min  
 Delta R.T.: -0.004 min  
 Response: 147595  
 Conc: 0.23 ng/ml



#12 4,4'-DDE  
 R.T.: 8.557 min  
 Delta R.T.: -0.013 min  
 Response: 338867  
 Conc: 0.22 ng/ml m



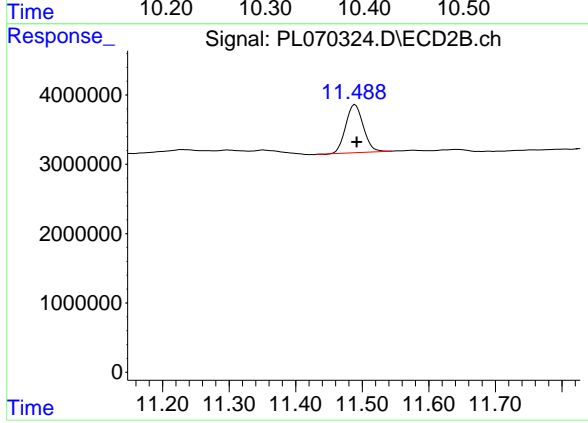
#28 Decachlorobiphenyl

R.T.: 10.393 min  
Delta R.T.: -0.005 min  
Response: 7104024  
Conc: 10.27 ng/ml

Instrument :  
ECD\_L  
ClientSampled :  
VNJ-209

Manual Integrations  
APPROVED

mohammad  
10/15/2021 2:52:39 PM



#28 Decachlorobiphenyl

R.T.: 11.489 min  
Delta R.T.: -0.002 min  
Response: 12784072  
Conc: 10.56 ng/ml