

Data Path : Z:\pestpcbsrv\HPCHEM1\ECD\_L\Data\PL101521\  
 Data File : PL070326.D  
 Signal(s) : Signal #1: ECD1A.ch Signal #2: ECD2B.ch  
 Acq On : 14 Oct 2021 17:17  
 Operator : AR\AJ  
 Sample : M4198-02  
 Misc :  
 ALS Vial : 18 Sample Multiplier: 1

Instrument :  
 ECD\_L  
 ClientSampleId :  
 S-2

Integration File signal 1: autoint1.e  
 Integration File signal 2: autoint2.e  
 Quant Time: Oct 15 09:55:39 2021  
 Quant Method : Z:\pestpcbsrv\HPCHEM1\ECD\_L\methods\PL092821.M  
 Quant Title : GC Extractables  
 QLast Update : Wed Sep 29 09:19:28 2021  
 Response via : Initial Calibration  
 Integrator: ChemStation

Volume Inj. : 1 µl  
 Signal #1 Phase : ZB-MR2 Signal #2 Phase: ZB-MR1  
 Signal #1 Info : 30M x 0.32mm x0.2 Signal #2 Info : 30M x 0.32mm x0.5µm

| Compound                    | RT#1   | RT#2   | Resp#1   | Resp#2   | ng/ml  | ng/ml  |
|-----------------------------|--------|--------|----------|----------|--------|--------|
| -----                       |        |        |          |          |        |        |
| System Monitoring Compounds |        |        |          |          |        |        |
| 1) SA Tetrachlo...          | 4.626  | 5.564  | 8081141  | 22243913 | 16.150 | 16.818 |
| 28) SA Decachlor...         | 10.393 | 11.490 | 10036302 | 18126474 | 14.504 | 14.978 |

Target Compounds

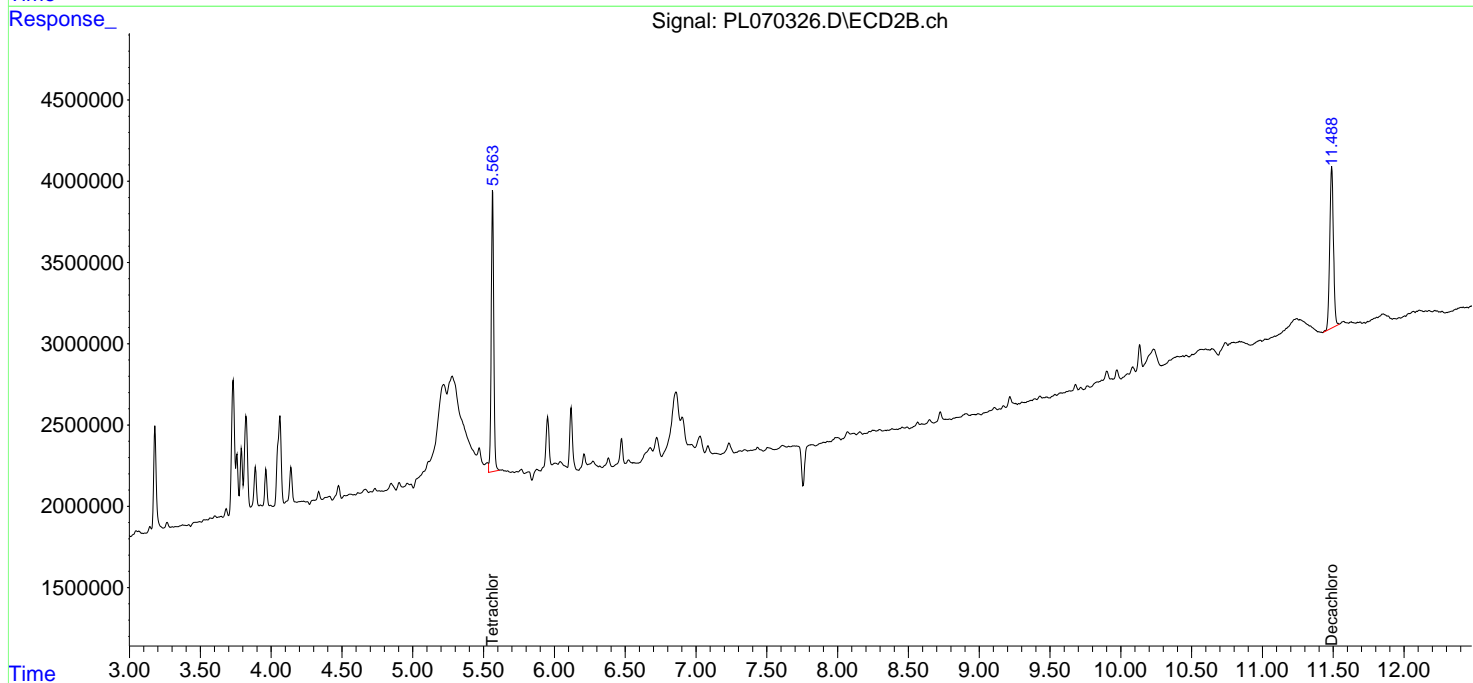
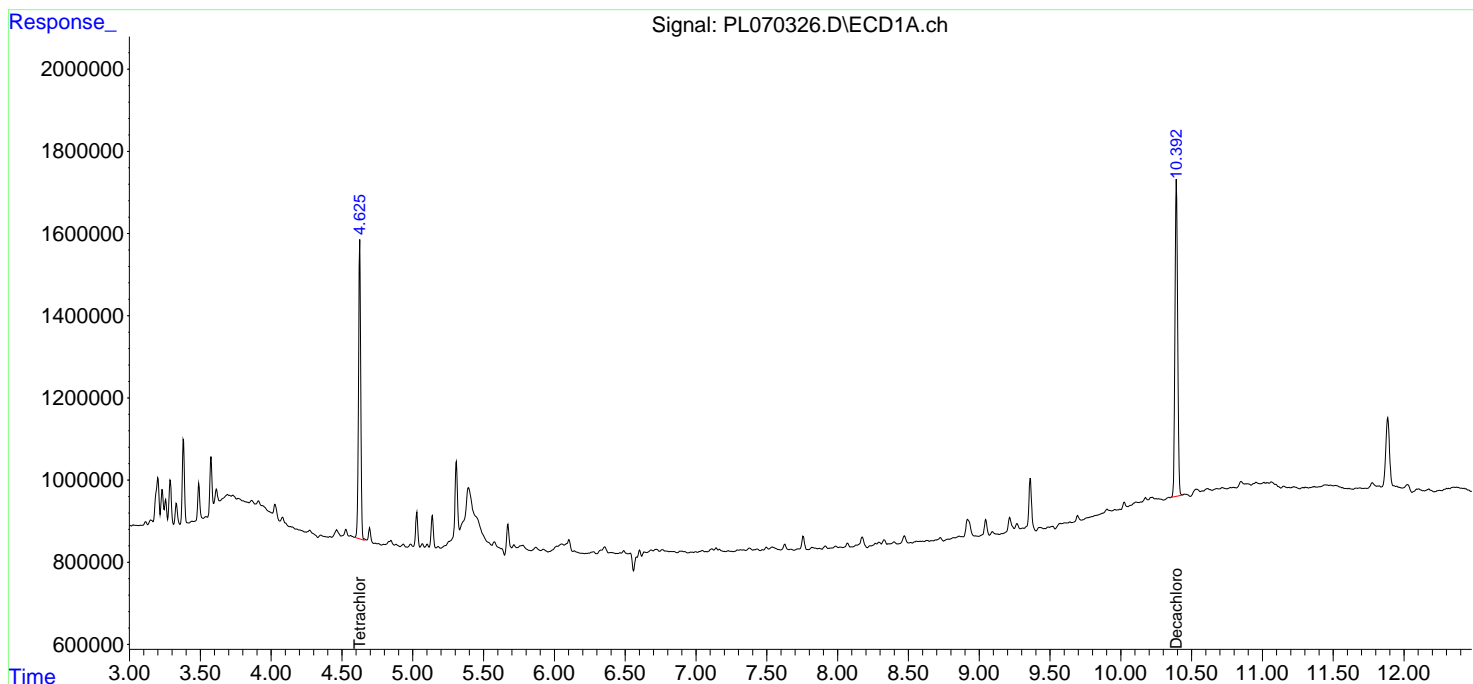
-----  
 (f)=RT Delta > 1/2 Window (#)=Amounts differ by > 25% (m)=manual int.

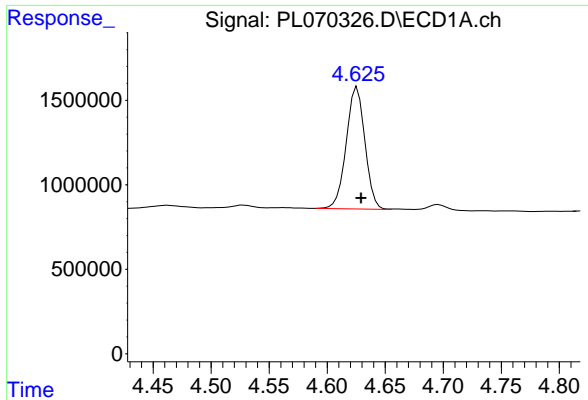
Data Path : Z:\pestpcbsrv\HPCHEM1\ECD\_L\Data\PL101521\  
 Data File : PL070326.D  
 Signal(s) : Signal #1: ECD1A.ch Signal #2: ECD2B.ch  
 Acq On : 14 Oct 2021 17:17  
 Operator : AR\AJ  
 Sample : M4198-02  
 Misc :  
 ALS Vial : 18 Sample Multiplier: 1

Instrument :  
 ECD\_L  
 ClientSampled :  
 S-2

Integration File signal 1: autoint1.e  
 Integration File signal 2: autoint2.e  
 Quant Time: Oct 15 09:55:39 2021  
 Quant Method : Z:\pestpcbsrv\HPCHEM1\ECD\_L\methods\PL092821.M  
 Quant Title : GC Extractables  
 QLast Update : Wed Sep 29 09:19:28 2021  
 Response via : Initial Calibration  
 Integrator: ChemStation

Volume Inj. : 1 µl  
 Signal #1 Phase : ZB-MR2 Signal #2 Phase: ZB-MR1  
 Signal #1 Info : 30M x 0.32mm x0.2 Signal #2 Info : 30M x 0.32mm x0.5µm

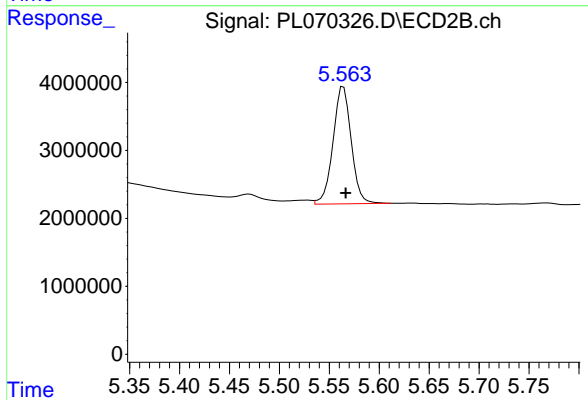




#1 Tetrachloro-m-xylene

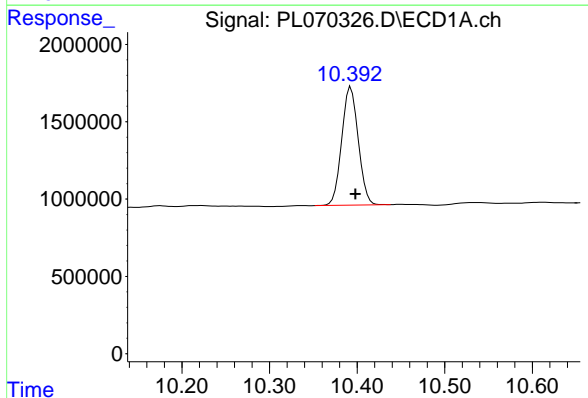
R.T.: 4.626 min  
 Delta R.T.: -0.003 min  
 Response: 8081141  
 Conc: 16.15 ng/ml

Instrument :  
 ECD\_L  
 ClientSampled :  
 S-2



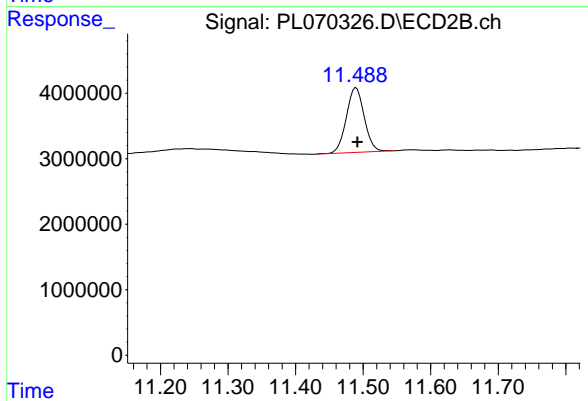
#1 Tetrachloro-m-xylene

R.T.: 5.564 min  
 Delta R.T.: -0.002 min  
 Response: 22243913  
 Conc: 16.82 ng/ml



#28 Decachlorobiphenyl

R.T.: 10.393 min  
 Delta R.T.: -0.005 min  
 Response: 10036302  
 Conc: 14.50 ng/ml



#28 Decachlorobiphenyl

R.T.: 11.490 min  
 Delta R.T.: -0.002 min  
 Response: 18126474  
 Conc: 14.98 ng/ml