

Data Path : Z:\pestpcbsrv\HPCHEM1\ECD_L\Data\PL101521\
 Data File : PL070328.D
 Signal(s) : Signal #1: ECD1A.ch Signal #2: ECD2B.ch
 Acq On : 14 Oct 2021 17:51
 Operator : AR\AJ
 Sample : M4198-04
 Misc :
 ALS Vial : 20 Sample Multiplier: 1

Instrument :
 ECD_L
 ClientSampleId :
 S-4

Integration File signal 1: autoint1.e
 Integration File signal 2: autoint2.e
 Quant Time: Oct 15 09:55:55 2021
 Quant Method : Z:\pestpcbsrv\HPCHEM1\ECD_L\methods\PL092821.M
 Quant Title : GC Extractables
 QLast Update : Wed Sep 29 09:19:28 2021
 Response via : Initial Calibration
 Integrator: ChemStation

Volume Inj. : 1 µl
 Signal #1 Phase : ZB-MR2 Signal #2 Phase: ZB-MR1
 Signal #1 Info : 30M x 0.32mm x0.2 Signal #2 Info : 30M x 0.32mm x0.5µm

Compound	RT#1	RT#2	Resp#1	Resp#2	ng/ml	ng/ml

System Monitoring Compounds						
1) SA Tetrachlo...	4.624	5.561	11269482	31637739	22.521	23.920
28) SA Decachlor...	10.389	11.481	14234245	26188333	20.570	21.640

Target Compounds

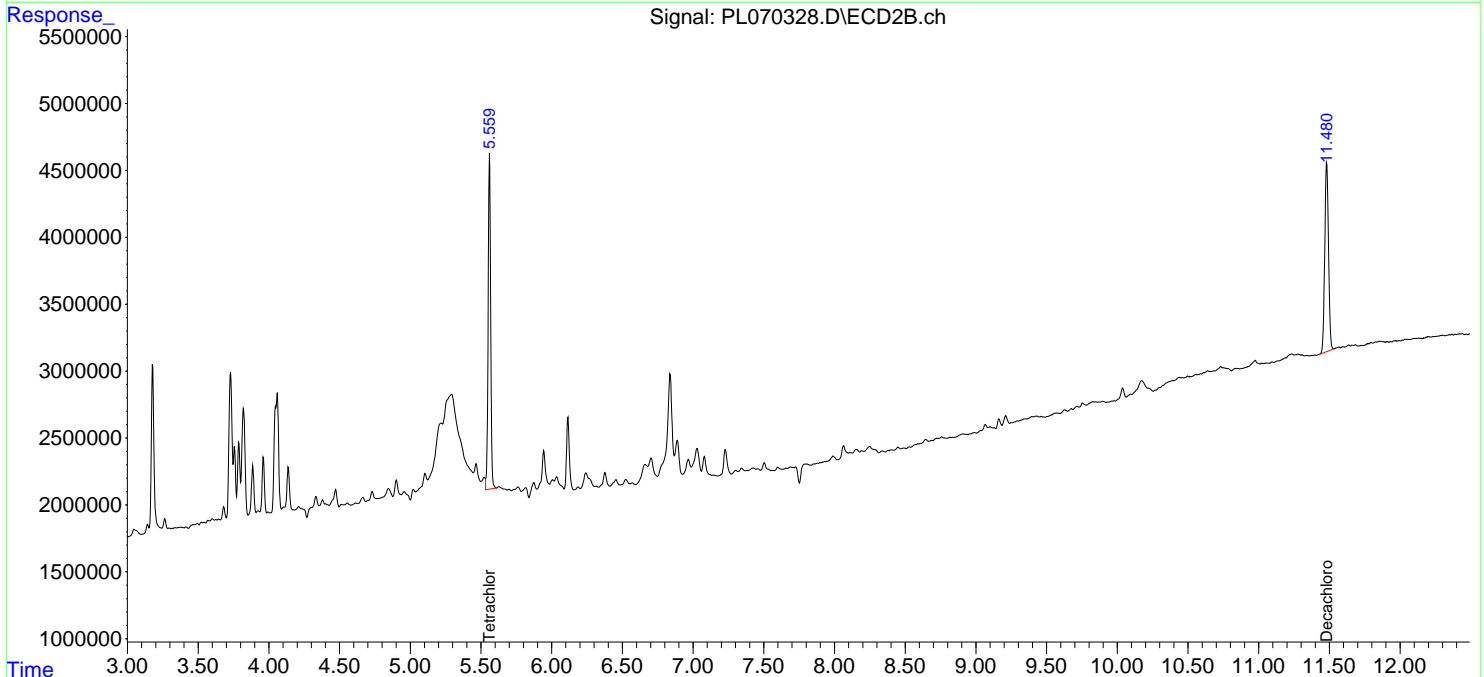
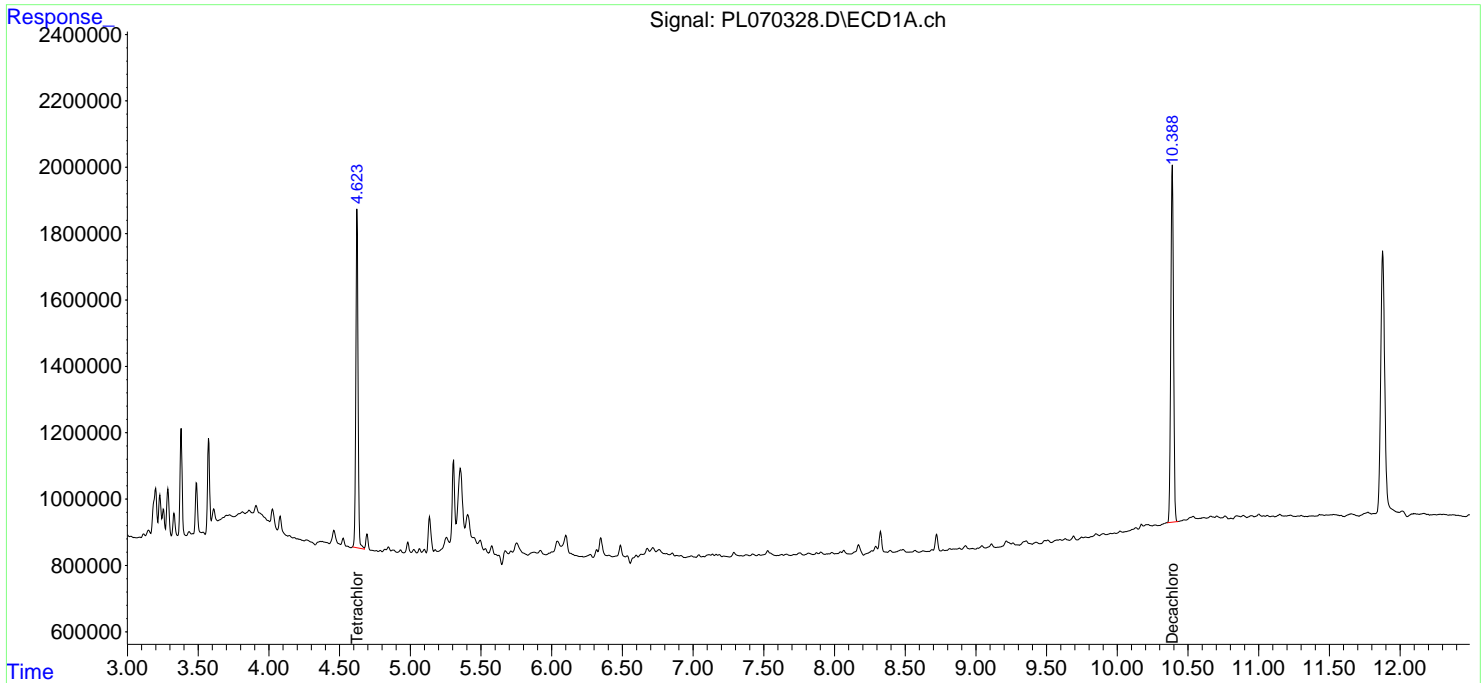
(f)=RT Delta > 1/2 Window (#)=Amounts differ by > 25% (m)=manual int.

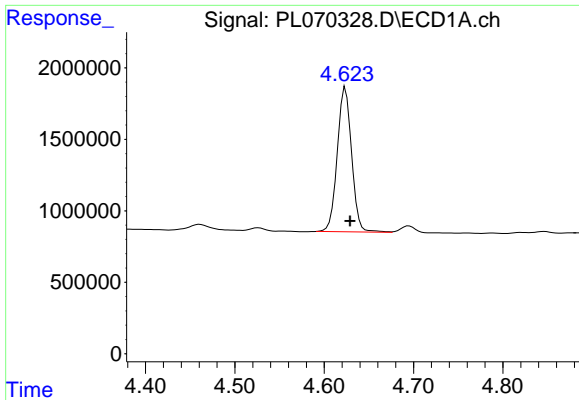
Data Path : Z:\pestpcbsrv\HPCHEM1\ECD_L\Data\PL101521\
 Data File : PL070328.D
 Signal(s) : Signal #1: ECD1A.ch Signal #2: ECD2B.ch
 Acq On : 14 Oct 2021 17:51
 Operator : AR\AJ
 Sample : M4198-04
 Misc :
 ALS Vial : 20 Sample Multiplier: 1

Instrument :
 ECD_L
 ClientSampled :
 S-4

Integration File signal 1: autoint1.e
 Integration File signal 2: autoint2.e
 Quant Time: Oct 15 09:55:55 2021
 Quant Method : Z:\pestpcbsrv\HPCHEM1\ECD_L\methods\PL092821.M
 Quant Title : GC Extractables
 QLast Update : Wed Sep 29 09:19:28 2021
 Response via : Initial Calibration
 Integrator: ChemStation

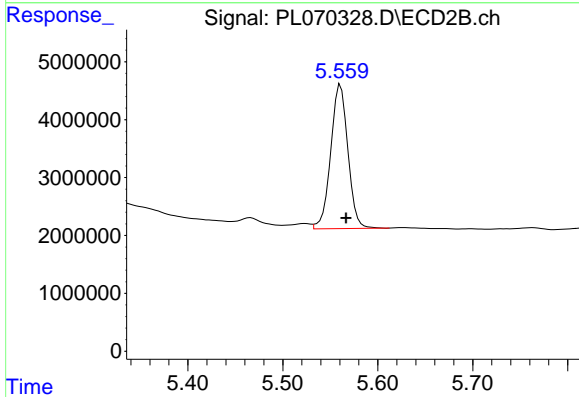
Volume Inj. : 1 µl
 Signal #1 Phase : ZB-MR2 Signal #2 Phase: ZB-MR1
 Signal #1 Info : 30M x 0.32mm x0.2 Signal #2 Info : 30M x 0.32mm x0.5µm



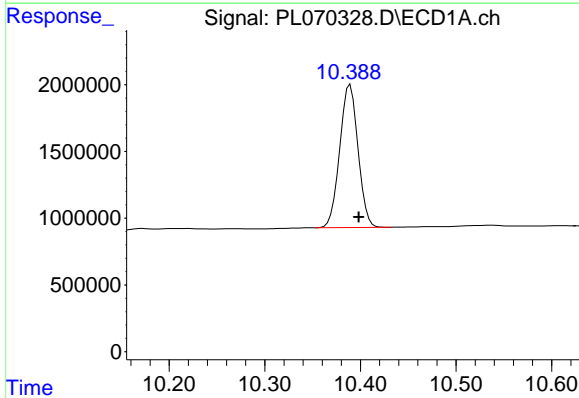


#1 Tetrachloro-m-xylene
R.T.: 4.624 min
Delta R.T.: -0.005 min
Response: 11269482
Conc: 22.52 ng/ml

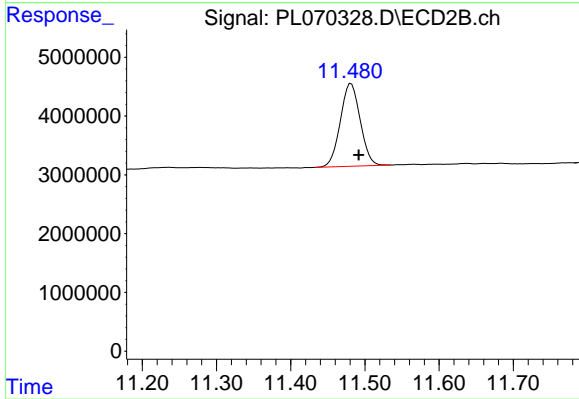
Instrument :
ECD_L
ClientSampled :
S-4



#1 Tetrachloro-m-xylene
R.T.: 5.561 min
Delta R.T.: -0.006 min
Response: 31637739
Conc: 23.92 ng/ml



#28 Decachlorobiphenyl
R.T.: 10.389 min
Delta R.T.: -0.009 min
Response: 14234245
Conc: 20.57 ng/ml



#28 Decachlorobiphenyl
R.T.: 11.481 min
Delta R.T.: -0.010 min
Response: 26188333
Conc: 21.64 ng/ml