

Data Path : Z:\pestpcbsrv\HPCHEM1\ECD_L\Data\PL101521\
 Data File : PL070333.D
 Signal(s) : Signal #1: ECD1A.ch Signal #2: ECD2B.ch
 Acq On : 14 Oct 2021 19:14
 Operator : AR\AJ
 Sample : I.BLK
 Misc :
 ALS Vial : 2 Sample Multiplier: 1

Instrument :
 ECD_L
 ClientSampleId :
 I.BLK

Integration File signal 1: autoint1.e
 Integration File signal 2: autoint2.e
 Quant Time: Oct 15 09:56:46 2021
 Quant Method : Z:\pestpcbsrv\HPCHEM1\ECD_L\methods\PL092821.M
 Quant Title : GC Extractables
 QLast Update : Wed Sep 29 09:19:28 2021
 Response via : Initial Calibration
 Integrator: ChemStation

Volume Inj. : 1 µl
 Signal #1 Phase : ZB-MR2 Signal #2 Phase: ZB-MR1
 Signal #1 Info : 30M x 0.32mm x0.2 Signal #2 Info : 30M x 0.32mm x0.5µm

Compound	RT#1	RT#2	Resp#1	Resp#2	ng/ml	ng/ml

System Monitoring Compounds						
1) SA Tetrachlo...	4.624	5.561	9923802	29871026	19.832	22.585
28) SA Decachlor...	10.388	11.481	14935198	27600148	21.583	22.807

Target Compounds

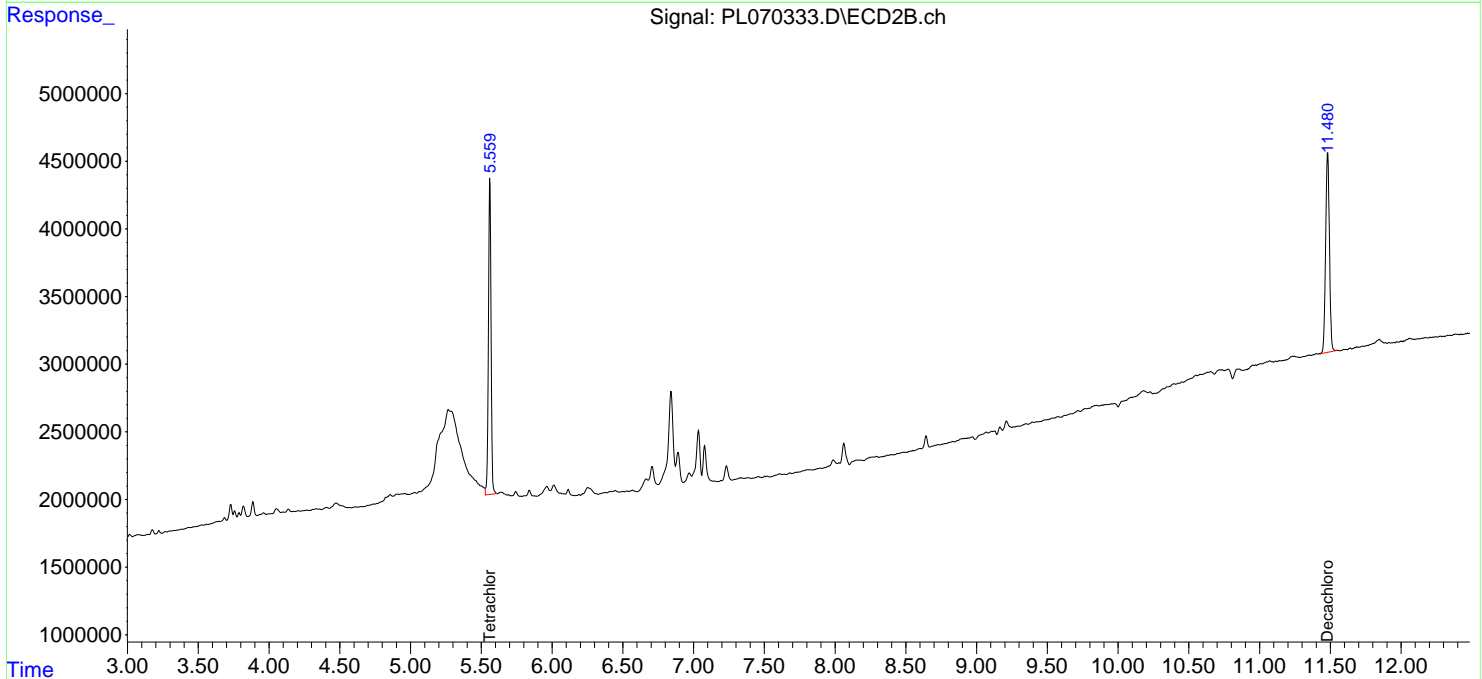
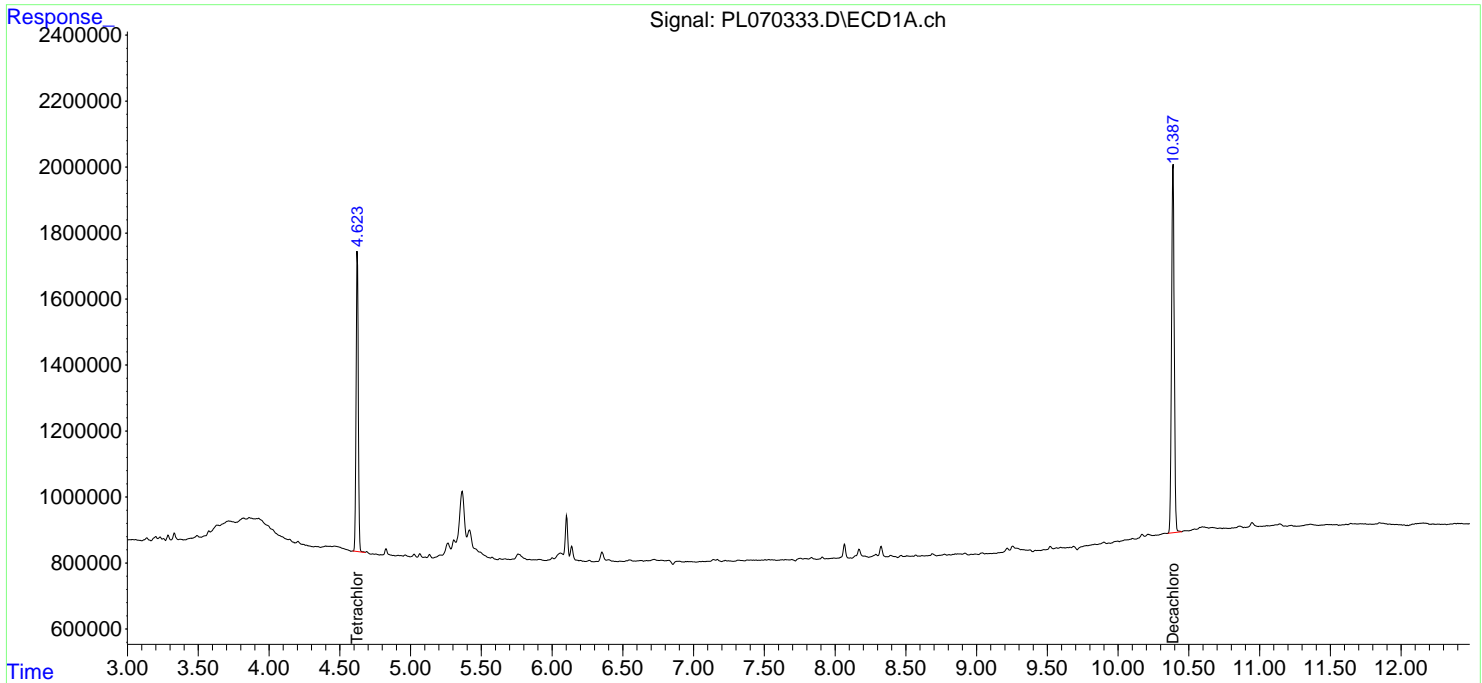
(f)=RT Delta > 1/2 Window (#)=Amounts differ by > 25% (m)=manual int.

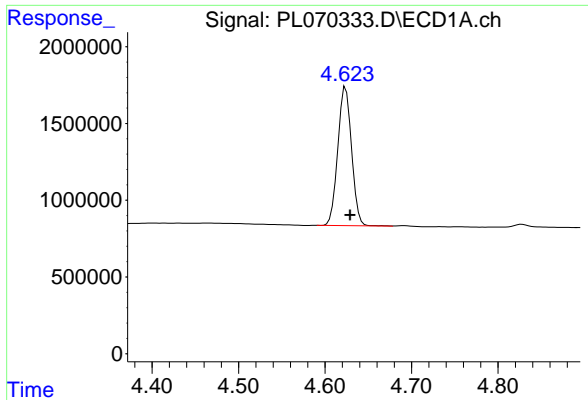
Data Path : Z:\pestpcbsrv\HPCHEM1\ECD_L\Data\PL101521\
 Data File : PL070333.D
 Signal(s) : Signal #1: ECD1A.ch Signal #2: ECD2B.ch
 Acq On : 14 Oct 2021 19:14
 Operator : AR\AJ
 Sample : I.BLK
 Misc :
 ALS Vial : 2 Sample Multiplier: 1

Instrument :
 ECD_L
 ClientSampled :
 I.BLK

Integration File signal 1: autoint1.e
 Integration File signal 2: autoint2.e
 Quant Time: Oct 15 09:56:46 2021
 Quant Method : Z:\pestpcbsrv\HPCHEM1\ECD_L\methods\PL092821.M
 Quant Title : GC Extractables
 QLast Update : Wed Sep 29 09:19:28 2021
 Response via : Initial Calibration
 Integrator: ChemStation

Volume Inj. : 1 µl
 Signal #1 Phase : ZB-MR2 Signal #2 Phase: ZB-MR1
 Signal #1 Info : 30M x 0.32mm x0.2 Signal #2 Info : 30M x 0.32mm x0.5µm

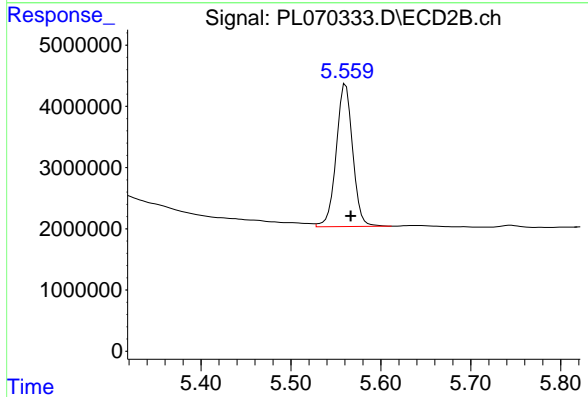




#1 Tetrachloro-m-xylene

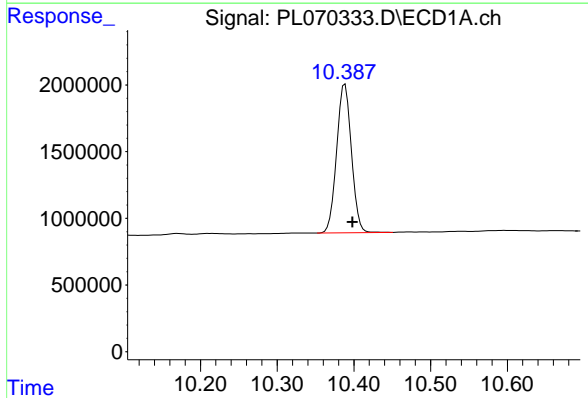
R.T.: 4.624 min
 Delta R.T.: -0.005 min
 Response: 9923802
 Conc: 19.83 ng/ml

Instrument :
 ECD_L
 ClientSampleId :
 I.BLK



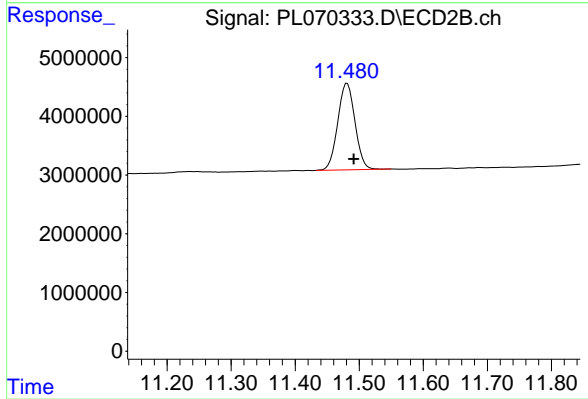
#1 Tetrachloro-m-xylene

R.T.: 5.561 min
 Delta R.T.: -0.006 min
 Response: 29871026
 Conc: 22.58 ng/ml



#28 Decachlorobiphenyl

R.T.: 10.388 min
 Delta R.T.: -0.010 min
 Response: 14935198
 Conc: 21.58 ng/ml



#28 Decachlorobiphenyl

R.T.: 11.481 min
 Delta R.T.: -0.010 min
 Response: 27600148
 Conc: 22.81 ng/ml