

Data Path : Z:\pestpcbsrv\HPCHEM1\ECD_L\Data\PL101521\
 Data File : PL070334.D
 Signal(s) : Signal #1: ECD1A.ch Signal #2: ECD2B.ch
 Acq On : 14 Oct 2021 19:31
 Operator : AR\AJ
 Sample : PSTDCCC050
 Misc :
 ALS Vial : 4 Sample Multiplier: 1

Instrument :
 ECD_L
 ClientSampleId :
 PSTDCCC050

Integration File signal 1: autoint1.e
 Integration File signal 2: autoint2.e
 Quant Time: Oct 15 09:56:58 2021
 Quant Method : Z:\pestpcbsrv\HPCHEM1\ECD_L\methods\PL092821.M
 Quant Title : GC Extractables
 QLast Update : Wed Sep 29 09:19:28 2021
 Response via : Initial Calibration
 Integrator: ChemStation

Volume Inj. : 1 µl
 Signal #1 Phase : ZB-MR2 Signal #2 Phase: ZB-MR1
 Signal #1 Info : 30M x 0.32mm x0.2 Signal #2 Info : 30M x 0.32mm x0.5µm

	Compound	RT#1	RT#2	Resp#1	Resp#2	ng/ml	ng/ml

System Monitoring Compounds							
1)	SA Tetrachlo...	4.623	5.561	25876994	74869563	51.714	56.607
28)	SA Decachlor...	10.388	11.481	34225328	65942379	49.460	54.490
Target Compounds							
2)	A alpha-BHC	5.330	6.142	36474650	111.0E6	49.276	56.757
3)	MA gamma-BHC...	5.754	6.539	36411643	102.8E6	52.147	56.108
4)	MA Heptachlor	6.162	7.188	38887267	103.1E6	51.048	55.284
5)	MB Aldrin	6.487	7.559	36119337	96003733	50.040	55.717
6)	B beta-BHC	6.134	6.793	17791795	47665789	52.994	55.434
7)	B delta-BHC	6.394	7.061	36264975	104.5E6	52.457	53.998
8)	B Heptachlo...	7.063	8.025	35239327	86555210	50.254	55.848
9)	A Endosulfan I	7.466	8.431	33589981	81673431	50.262	55.513
10)	B gamma-Chl...	7.340	8.295	36358634	89163258	50.204	55.746
11)	B alpha-Chl...	7.410	8.376	36318418	86793329	49.866	55.032
12)	B 4,4'-DDE	7.624	8.563	32842340	85725092	51.601	55.348
13)	MA Dieldrin	7.752	8.720	35164779	84363093	51.180	55.265
14)	MA Endrin	8.044	8.960	30859644	69416862	48.834	55.262
15)	B Endosulfa...	8.354	9.194	31123701	66801819	49.062	55.904
16)	A 4,4'-DDD	8.209	9.103	30238451	69272245	53.916	58.644
17)	MA 4,4'-DDT	8.470	9.421	28805797	66968082	47.090	51.245
18)	B Endrin al...	8.542	9.329	24590178	52953770	49.631	54.901
19)	B Endosulfa...	8.773	9.567	32609119	66321675	49.426	54.195
20)	A Methoxychlor	9.064	9.907	17624241	32735298	47.199	50.585
21)	B Endrin ke...	9.292	10.065	38797889	74520810	50.774	55.710
22)	Mirex	9.479	10.531	31663253	51834565	48.005	52.617

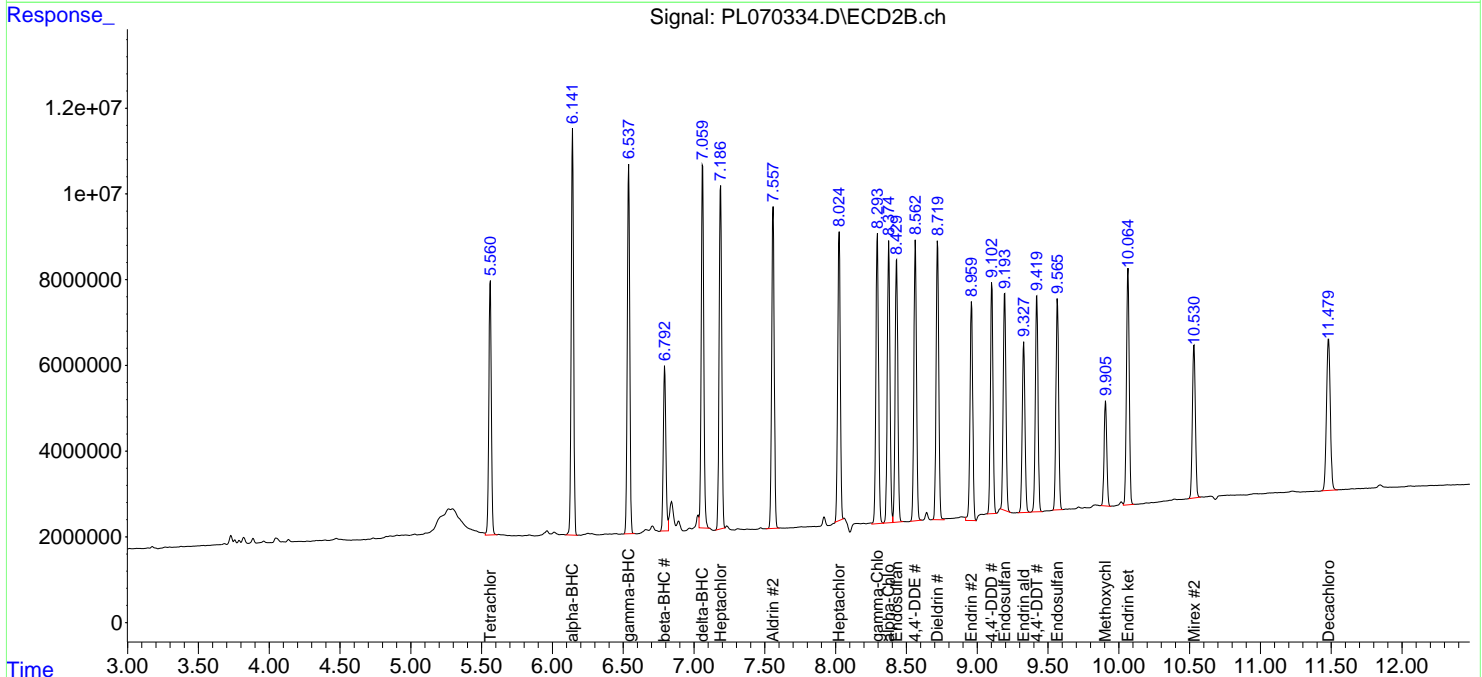
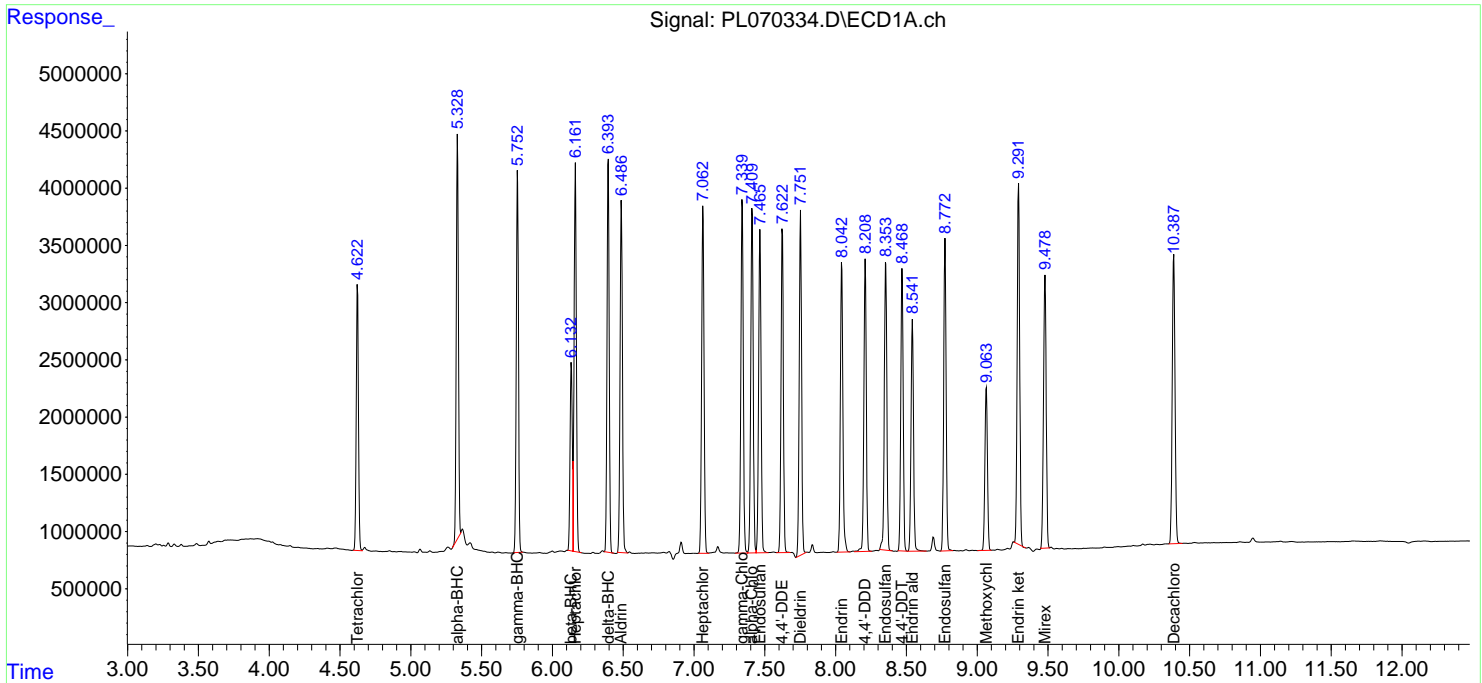
(f)=RT Delta > 1/2 Window (#)=Amounts differ by > 25% (m)=manual int.

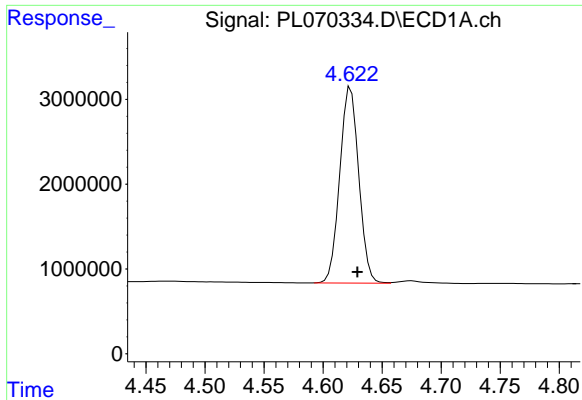
Data Path : Z:\pestpcbsrv\HPCHEM1\ECD_L\Data\PL101521\
 Data File : PL070334.D
 Signal(s) : Signal #1: ECD1A.ch Signal #2: ECD2B.ch
 Acq On : 14 Oct 2021 19:31
 Operator : AR\AJ
 Sample : PSTDCCC050
 Misc :
 ALS Vial : 4 Sample Multiplier: 1

Instrument :
 ECD_L
 ClientSampleId :
 PSTDCCC050

Integration File signal 1: autoint1.e
 Integration File signal 2: autoint2.e
 Quant Time: Oct 15 09:56:58 2021
 Quant Method : Z:\pestpcbsrv\HPCHEM1\ECD_L\methods\PL092821.M
 Quant Title : GC Extractables
 QLast Update : Wed Sep 29 09:19:28 2021
 Response via : Initial Calibration
 Integrator: ChemStation

Volume Inj. : 1 µl
 Signal #1 Phase : ZB-MR2 Signal #2 Phase: ZB-MR1
 Signal #1 Info : 30M x 0.32mm x0.2 Signal #2 Info : 30M x 0.32mm x0.5µm

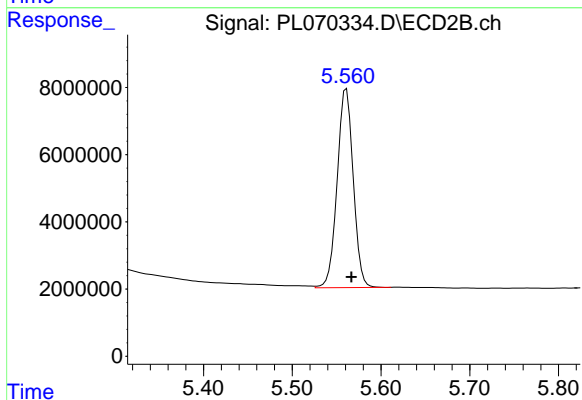




#1 Tetrachloro-m-xylene

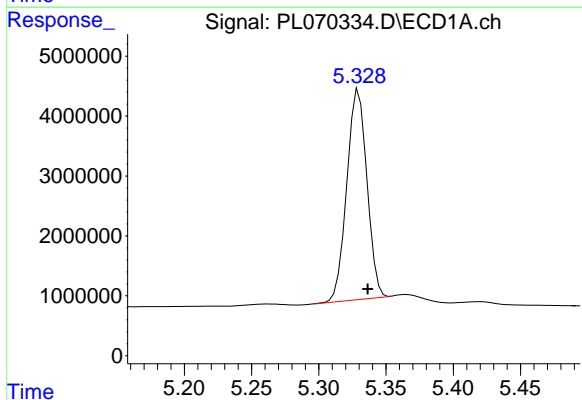
R.T.: 4.623 min
 Delta R.T.: -0.005 min
 Response: 25876994
 Conc: 51.71 ng/ml

Instrument :
 ECD_L
 ClientSampleId :
 PSTDCCC050



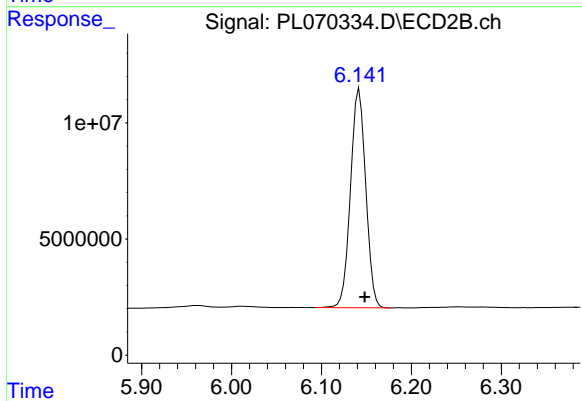
#1 Tetrachloro-m-xylene

R.T.: 5.561 min
 Delta R.T.: -0.006 min
 Response: 74869563
 Conc: 56.61 ng/ml



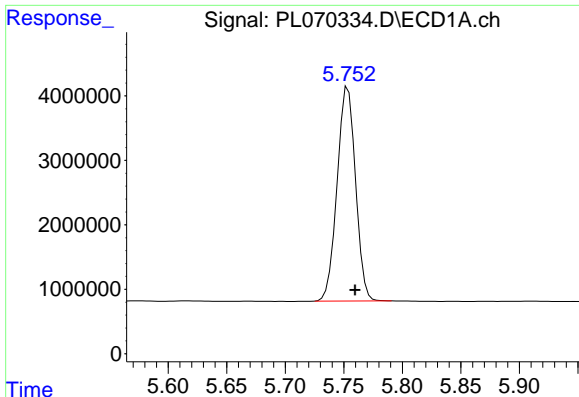
#2 alpha-BHC

R.T.: 5.330 min
 Delta R.T.: -0.007 min
 Response: 36474650
 Conc: 49.28 ng/ml



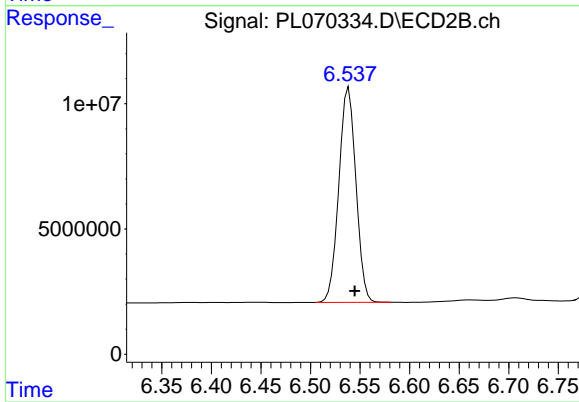
#2 alpha-BHC

R.T.: 6.142 min
 Delta R.T.: -0.006 min
 Response: 111013094
 Conc: 56.76 ng/ml

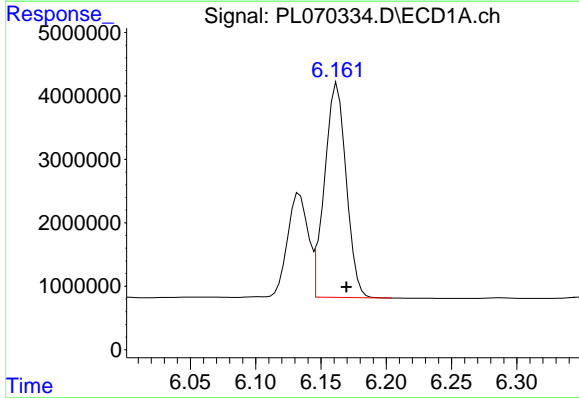


#3 gamma-BHC (Lindane)
 R.T.: 5.754 min
 Delta R.T.: -0.006 min
 Response: 36411643
 Conc: 52.15 ng/ml

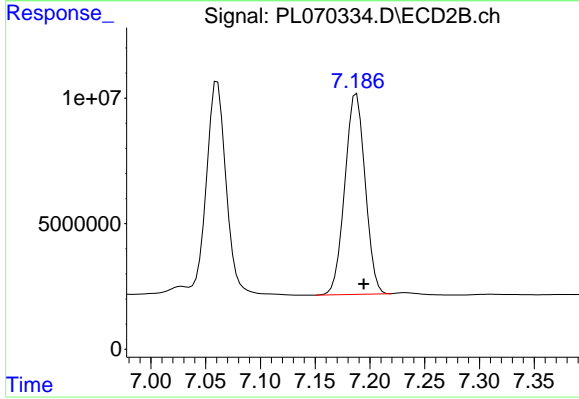
Instrument :
 ECD_L
 ClientSampleId :
 PSTDCCC050



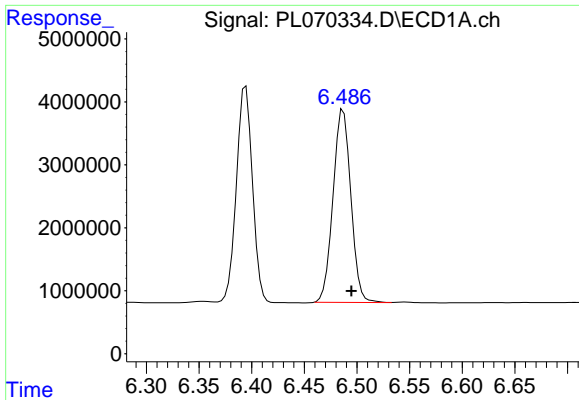
#3 gamma-BHC (Lindane)
 R.T.: 6.539 min
 Delta R.T.: -0.006 min
 Response: 102798621
 Conc: 56.11 ng/ml



#4 Heptachlor
 R.T.: 6.162 min
 Delta R.T.: -0.007 min
 Response: 38887267
 Conc: 51.05 ng/ml

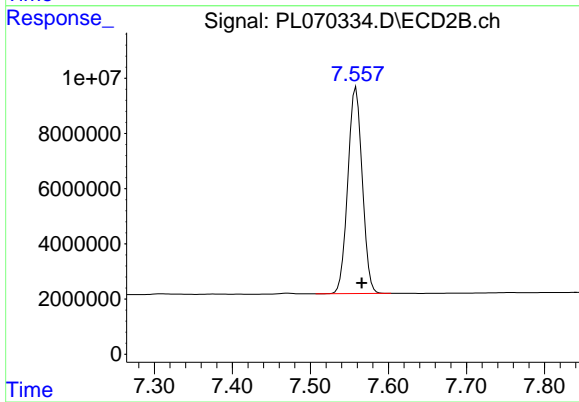


#4 Heptachlor
 R.T.: 7.188 min
 Delta R.T.: -0.006 min
 Response: 103101688
 Conc: 55.28 ng/ml

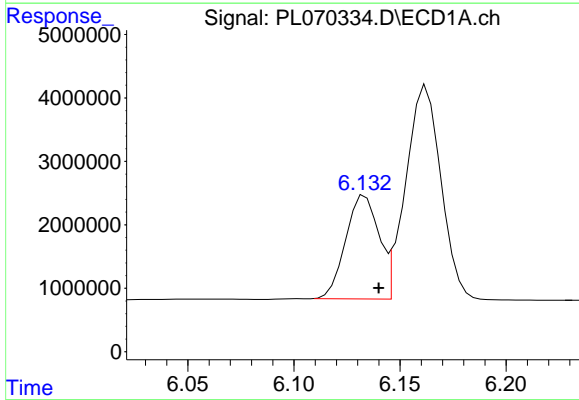


#5 Aldrin
 R.T.: 6.487 min
 Delta R.T.: -0.008 min
 Response: 36119337
 Conc: 50.04 ng/ml

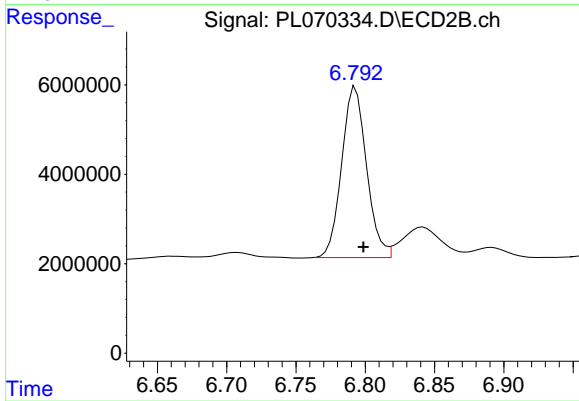
Instrument :
 ECD_L
 ClientSampleId :
 PSTDCCC050



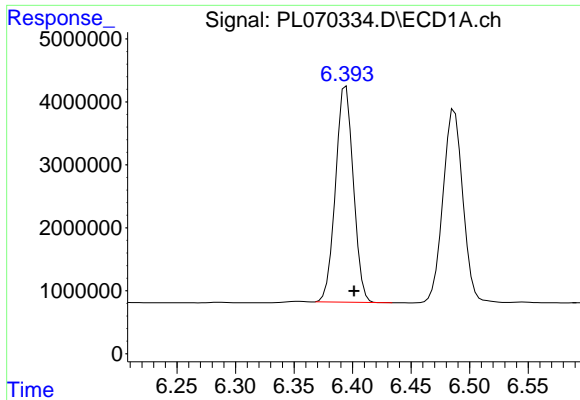
#5 Aldrin
 R.T.: 7.559 min
 Delta R.T.: -0.007 min
 Response: 96003733
 Conc: 55.72 ng/ml



#6 beta-BHC
 R.T.: 6.134 min
 Delta R.T.: -0.006 min
 Response: 17791795
 Conc: 52.99 ng/ml

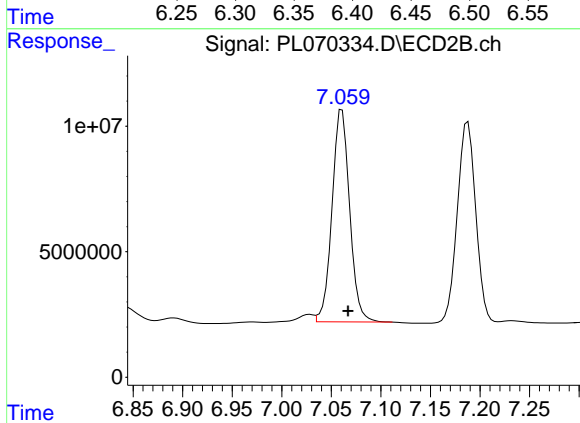


#6 beta-BHC
 R.T.: 6.793 min
 Delta R.T.: -0.006 min
 Response: 47665789
 Conc: 55.43 ng/ml

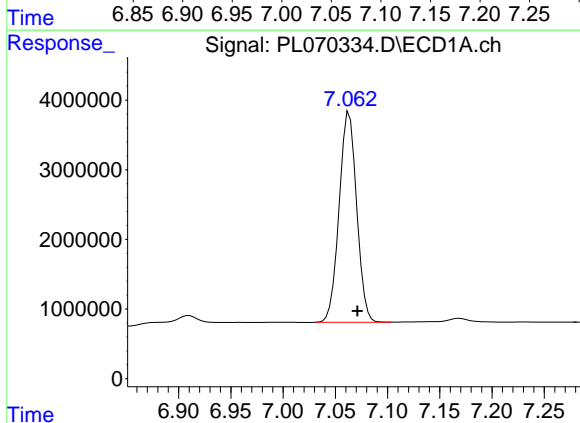


#7 delta-BHC
 R.T.: 6.394 min
 Delta R.T.: -0.007 min
 Response: 36264975
 Conc: 52.46 ng/ml

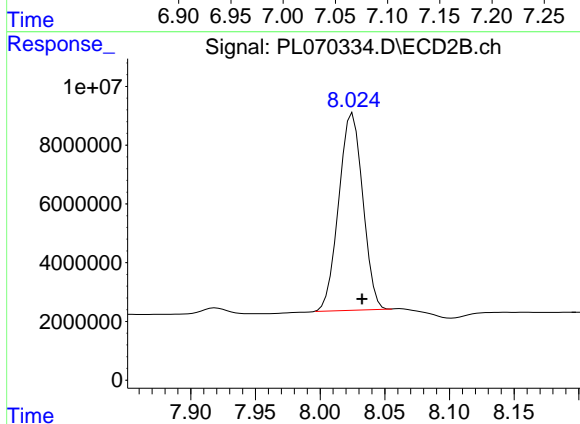
Instrument :
 ECD_L
 ClientSampleId :
 PSTDCCC050



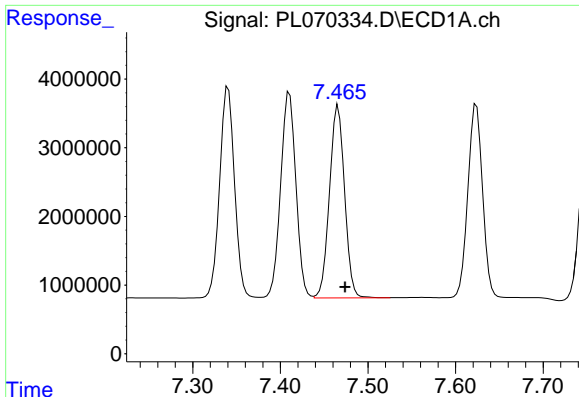
#7 delta-BHC
 R.T.: 7.061 min
 Delta R.T.: -0.006 min
 Response: 104518014
 Conc: 54.00 ng/ml



#8 Heptachlor epoxide
 R.T.: 7.063 min
 Delta R.T.: -0.008 min
 Response: 35239327
 Conc: 50.25 ng/ml



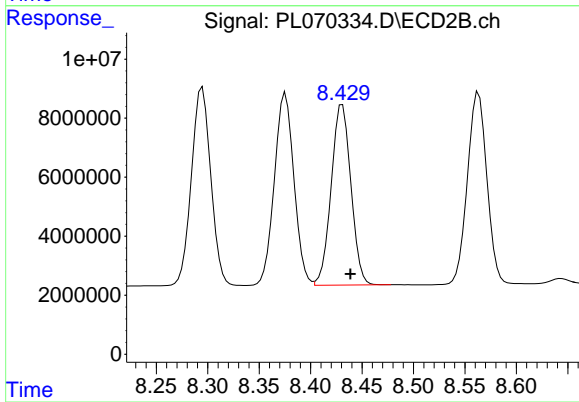
#8 Heptachlor epoxide
 R.T.: 8.025 min
 Delta R.T.: -0.007 min
 Response: 86555210
 Conc: 55.85 ng/ml



#9 Endosulfan I

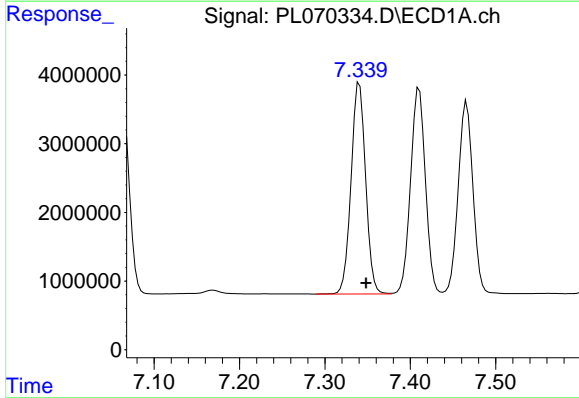
R.T.: 7.466 min
 Delta R.T.: -0.008 min
 Response: 33589981
 Conc: 50.26 ng/ml

Instrument :
 ECD_L
 ClientSampleId :
 PSTDCCC050



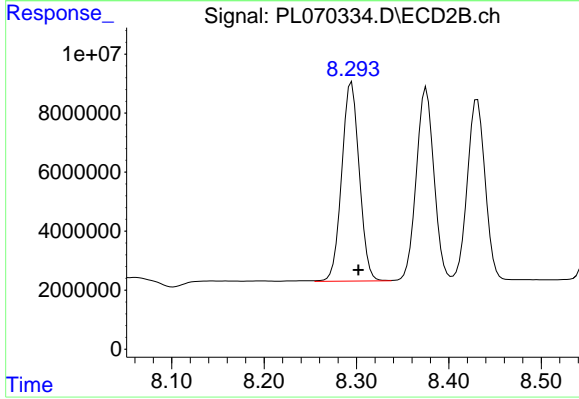
#9 Endosulfan I

R.T.: 8.431 min
 Delta R.T.: -0.008 min
 Response: 81673431
 Conc: 55.51 ng/ml



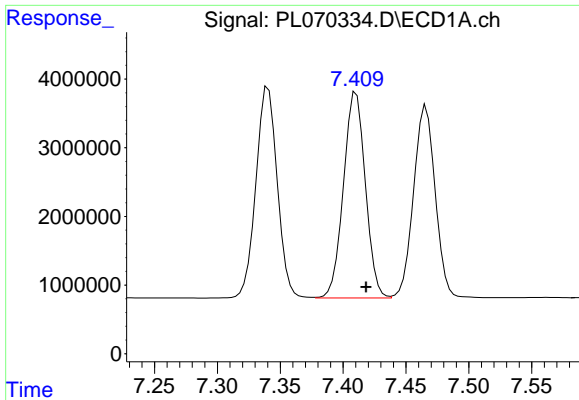
#10 gamma-Chlordane

R.T.: 7.340 min
 Delta R.T.: -0.008 min
 Response: 36358634
 Conc: 50.20 ng/ml



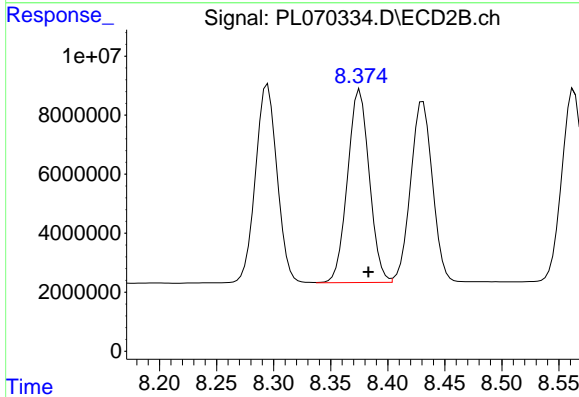
#10 gamma-Chlordane

R.T.: 8.295 min
 Delta R.T.: -0.007 min
 Response: 89163258
 Conc: 55.75 ng/ml

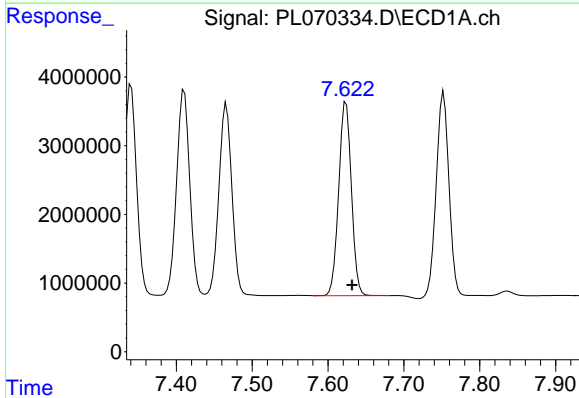


#11 alpha-Chlordane
 R.T.: 7.410 min
 Delta R.T.: -0.008 min
 Response: 36318418
 Conc: 49.87 ng/ml

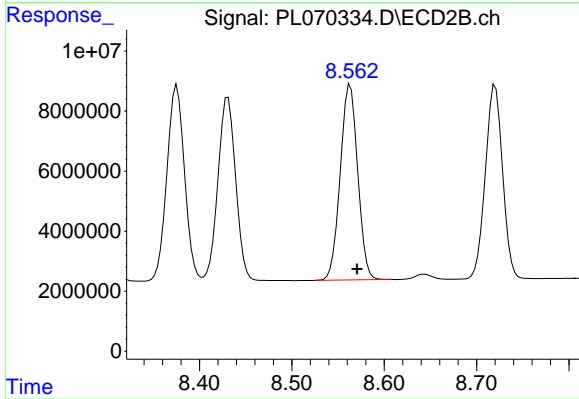
Instrument :
 ECD_L
 ClientSampleId :
 PSTDCCC050



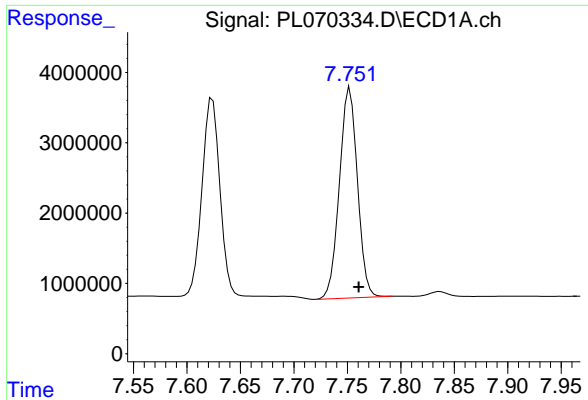
#11 alpha-Chlordane
 R.T.: 8.376 min
 Delta R.T.: -0.008 min
 Response: 86793329
 Conc: 55.03 ng/ml



#12 4,4'-DDE
 R.T.: 7.624 min
 Delta R.T.: -0.008 min
 Response: 32842340
 Conc: 51.60 ng/ml

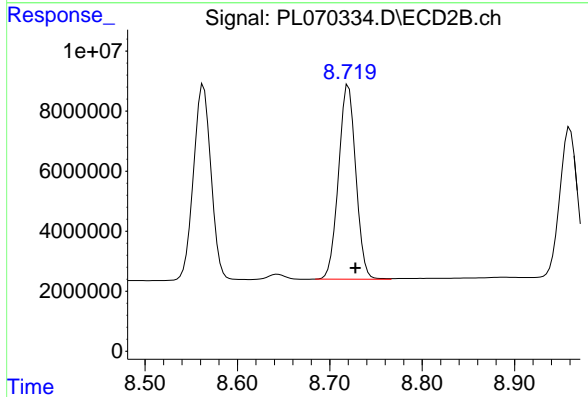


#12 4,4'-DDE
 R.T.: 8.563 min
 Delta R.T.: -0.008 min
 Response: 85725092
 Conc: 55.35 ng/ml

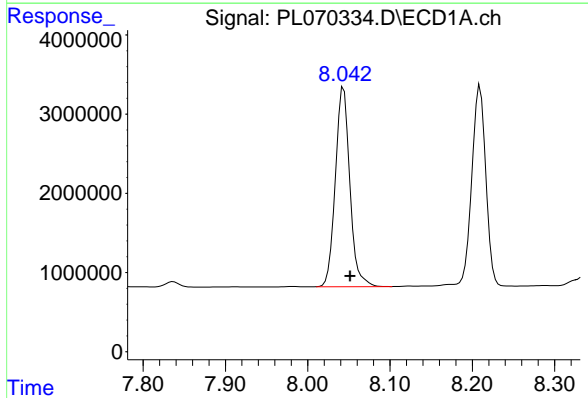


#13 Dieldrin
 R.T.: 7.752 min
 Delta R.T.: -0.008 min
 Response: 35164779
 Conc: 51.18 ng/ml

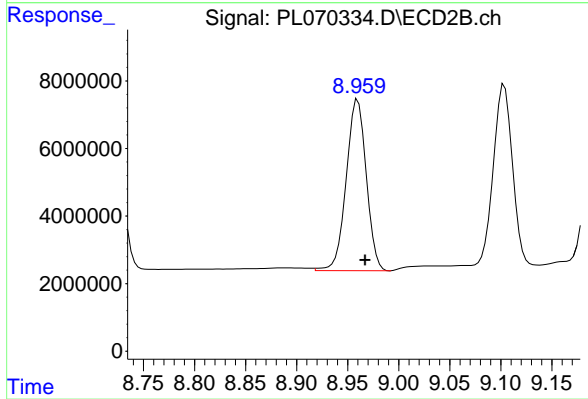
Instrument :
 ECD_L
 ClientSampleId :
 PSTDCCC050



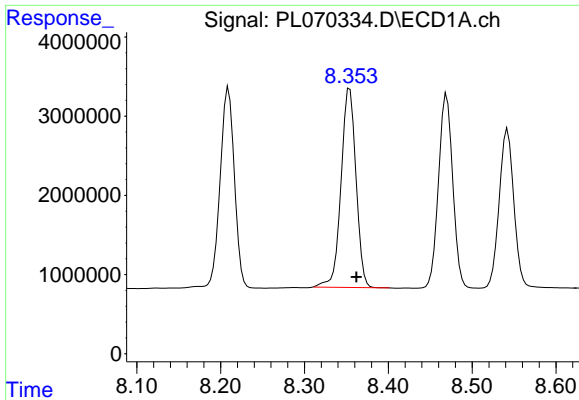
#13 Dieldrin
 R.T.: 8.720 min
 Delta R.T.: -0.008 min
 Response: 84363093
 Conc: 55.27 ng/ml



#14 Endrin
 R.T.: 8.044 min
 Delta R.T.: -0.008 min
 Response: 30859644
 Conc: 48.83 ng/ml

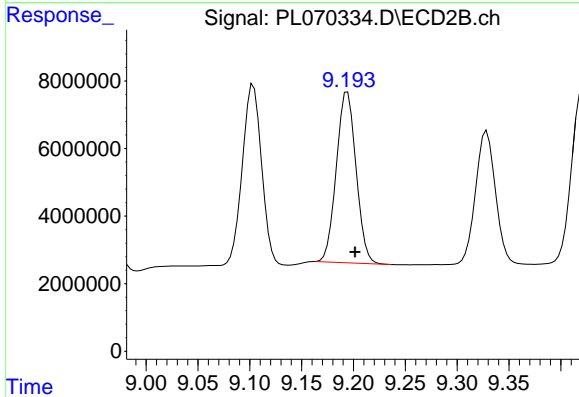


#14 Endrin
 R.T.: 8.960 min
 Delta R.T.: -0.007 min
 Response: 69416862
 Conc: 55.26 ng/ml

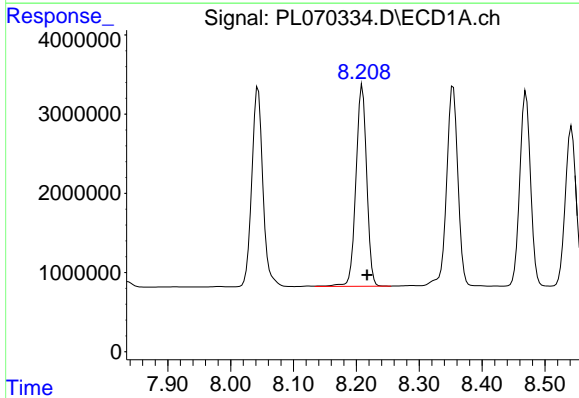


#15 Endosulfan II
 R.T.: 8.354 min
 Delta R.T.: -0.008 min
 Response: 31123701
 Conc: 49.06 ng/ml

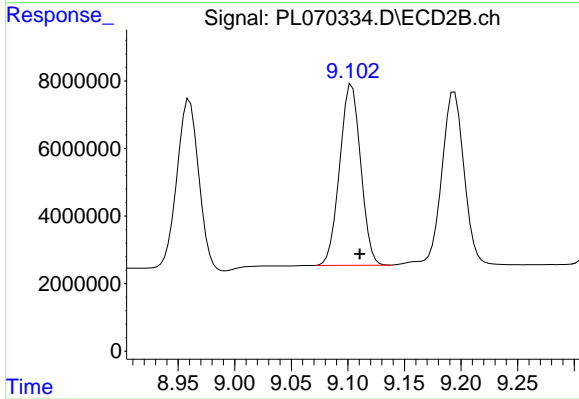
Instrument :
 ECD_L
 ClientSampleId :
 PSTDCCC050



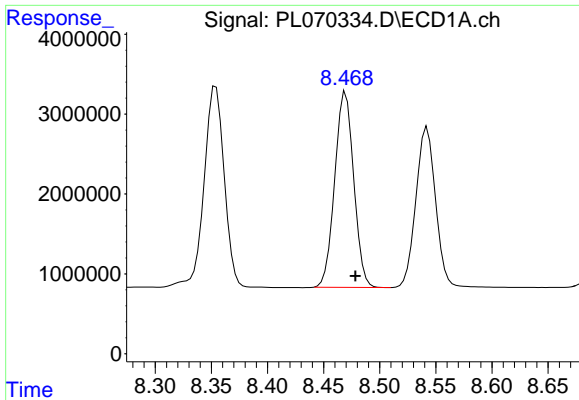
#15 Endosulfan II
 R.T.: 9.194 min
 Delta R.T.: -0.007 min
 Response: 66801819
 Conc: 55.90 ng/ml



#16 4,4'-DDD
 R.T.: 8.209 min
 Delta R.T.: -0.008 min
 Response: 30238451
 Conc: 53.92 ng/ml

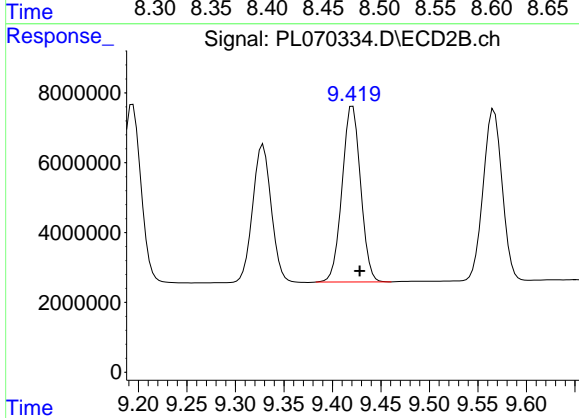


#16 4,4'-DDD
 R.T.: 9.103 min
 Delta R.T.: -0.007 min
 Response: 69272245
 Conc: 58.64 ng/ml

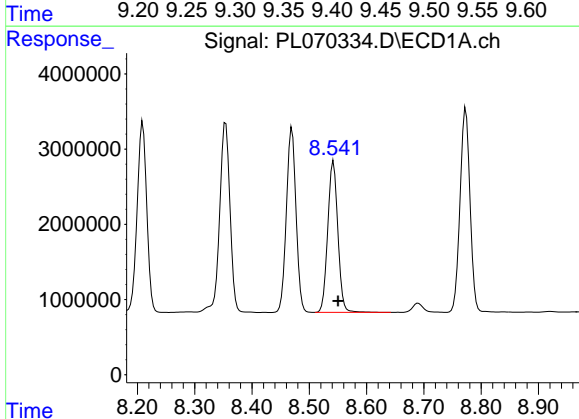


#17 4,4'-DDT
 R.T.: 8.470 min
 Delta R.T.: -0.009 min
 Response: 28805797
 Conc: 47.09 ng/ml

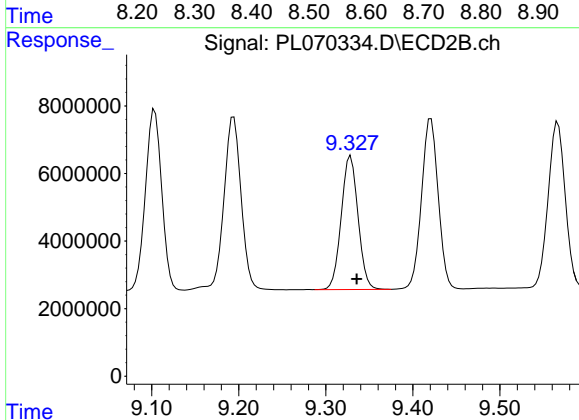
Instrument :
 ECD_L
 ClientSampleId :
 PSTDCCC050



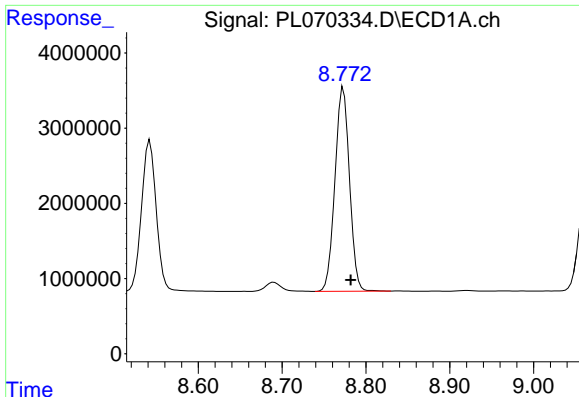
#17 4,4'-DDT
 R.T.: 9.421 min
 Delta R.T.: -0.007 min
 Response: 66968082
 Conc: 51.24 ng/ml



#18 Endrin aldehyde
 R.T.: 8.542 min
 Delta R.T.: -0.008 min
 Response: 24590178
 Conc: 49.63 ng/ml



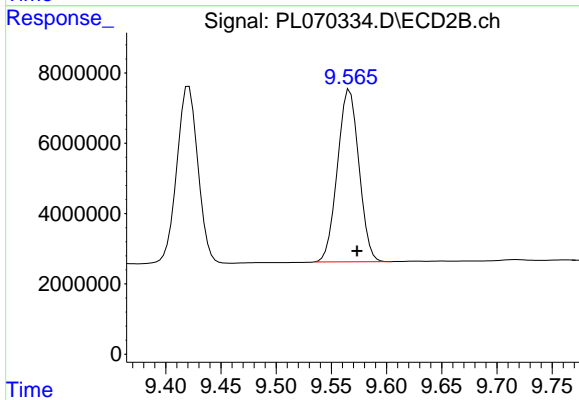
#18 Endrin aldehyde
 R.T.: 9.329 min
 Delta R.T.: -0.007 min
 Response: 52953770
 Conc: 54.90 ng/ml



#19 Endosulfan Sulfate

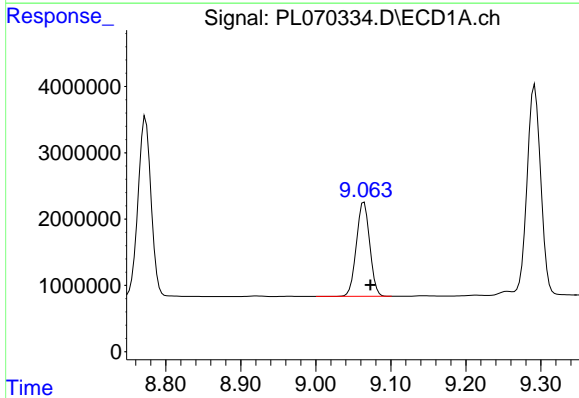
R.T.: 8.773 min
 Delta R.T.: -0.009 min
 Response: 32609119
 Conc: 49.43 ng/ml

Instrument :
 ECD_L
 ClientSampleId :
 PSTDCCC050



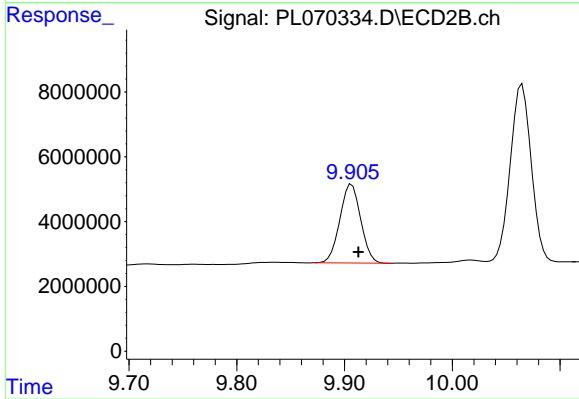
#19 Endosulfan Sulfate

R.T.: 9.567 min
 Delta R.T.: -0.007 min
 Response: 66321675
 Conc: 54.20 ng/ml



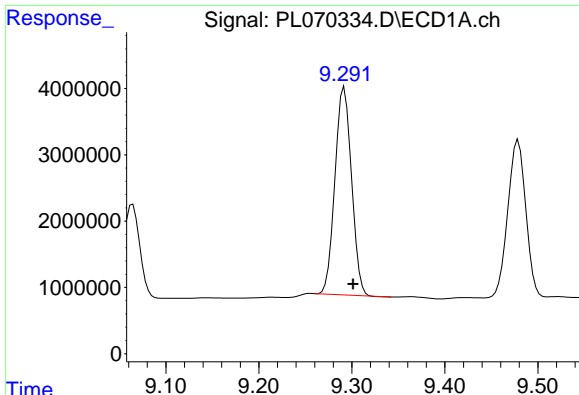
#20 Methoxychlor

R.T.: 9.064 min
 Delta R.T.: -0.008 min
 Response: 17624241
 Conc: 47.20 ng/ml



#20 Methoxychlor

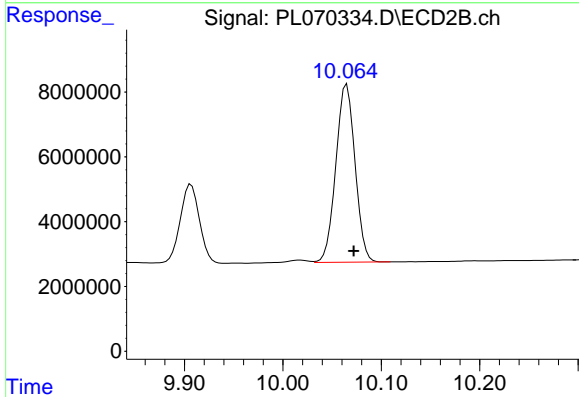
R.T.: 9.907 min
 Delta R.T.: -0.006 min
 Response: 32735298
 Conc: 50.58 ng/ml



#21 Endrin ketone

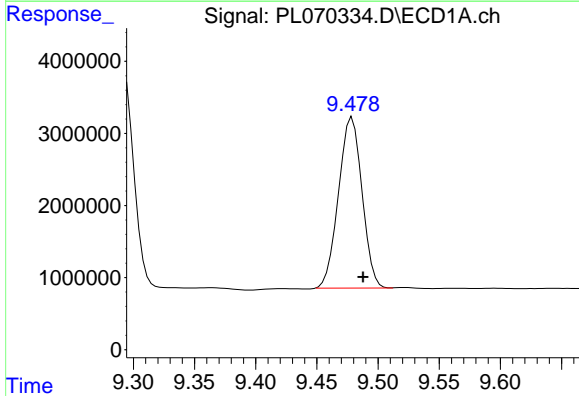
R.T.: 9.292 min
 Delta R.T.: -0.009 min
 Response: 38797889
 Conc: 50.77 ng/ml

Instrument :
 ECD_L
 ClientSampleId :
 PSTDCCC050



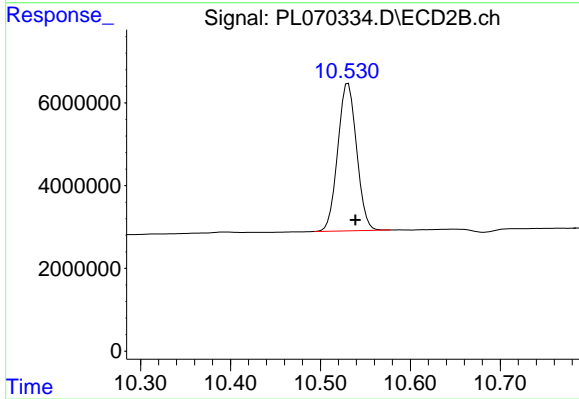
#21 Endrin ketone

R.T.: 10.065 min
 Delta R.T.: -0.007 min
 Response: 74520810
 Conc: 55.71 ng/ml



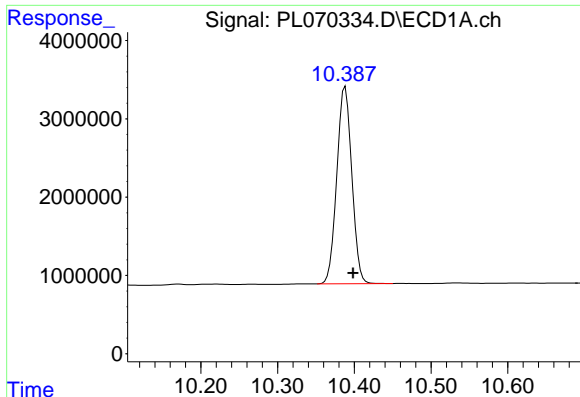
#22 Mirex

R.T.: 9.479 min
 Delta R.T.: -0.009 min
 Response: 31663253
 Conc: 48.00 ng/ml



#22 Mirex

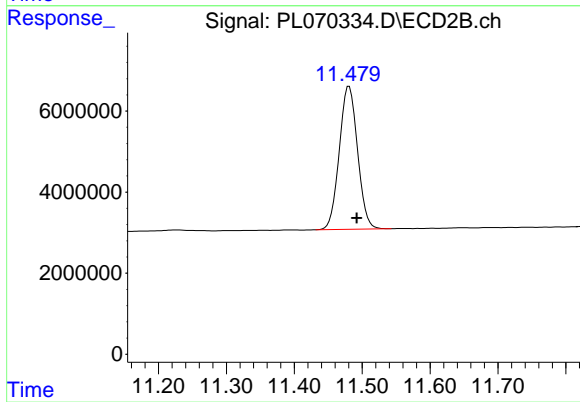
R.T.: 10.531 min
 Delta R.T.: -0.008 min
 Response: 51834565
 Conc: 52.62 ng/ml



#28 Decachlorobiphenyl

R.T.: 10.388 min
Delta R.T.: -0.010 min
Response: 34225328
Conc: 49.46 ng/ml

Instrument :
ECD_L
ClientSampleId :
PSTDCCC050



#28 Decachlorobiphenyl

R.T.: 11.481 min
Delta R.T.: -0.011 min
Response: 65942379
Conc: 54.49 ng/ml