

Data Path : Z:\pestpcbsrv\HPCHEM1\ECD\_L\Data\PL101619\  
 Data File : PL053339.D  
 Signal(s) : Signal #1: ECD1A.ch Signal #2: ECD2B.ch  
 Acq On : 15 Oct 2019 14:23  
 Operator : SG\AJ  
 Sample : K5355-04  
 Misc :  
 ALS Vial : 9 Sample Multiplier: 1

Instrument :  
 ECD\_L  
 ClientSampleId :  
 COMP-33

Integration File signal 1: autoint1.e  
 Integration File signal 2: autoint2.e  
 Quant Time: Oct 16 00:42:54 2019  
 Quant Method : Z:\pestpcbsrv\HPCHEM1\ECD\_L\methods\PL092919.M  
 Quant Title : GC Extractables  
 QLast Update : Mon Sep 30 08:44:08 2019  
 Response via : Initial Calibration  
 Integrator: ChemStation

Volume Inj. : 1 µl  
 Signal #1 Phase : ZB-MR2 Signal #2 Phase: ZB-MR1  
 Signal #1 Info : 30M x 0.32mm x0.2 Signal #2 Info : 30M x 0.32mm x0.5µm

Compound	RT#1	RT#2	Resp#1	Resp#2	ng/ml	ng/ml
-----						
System Monitoring Compounds						
1) SA Tetrachlo...	3.545	4.045	107.1E6	25302619	10.764	9.423
28) SA Decachlor...	8.334	9.124	113.4E6	34477647	11.320	11.752

Target Compounds

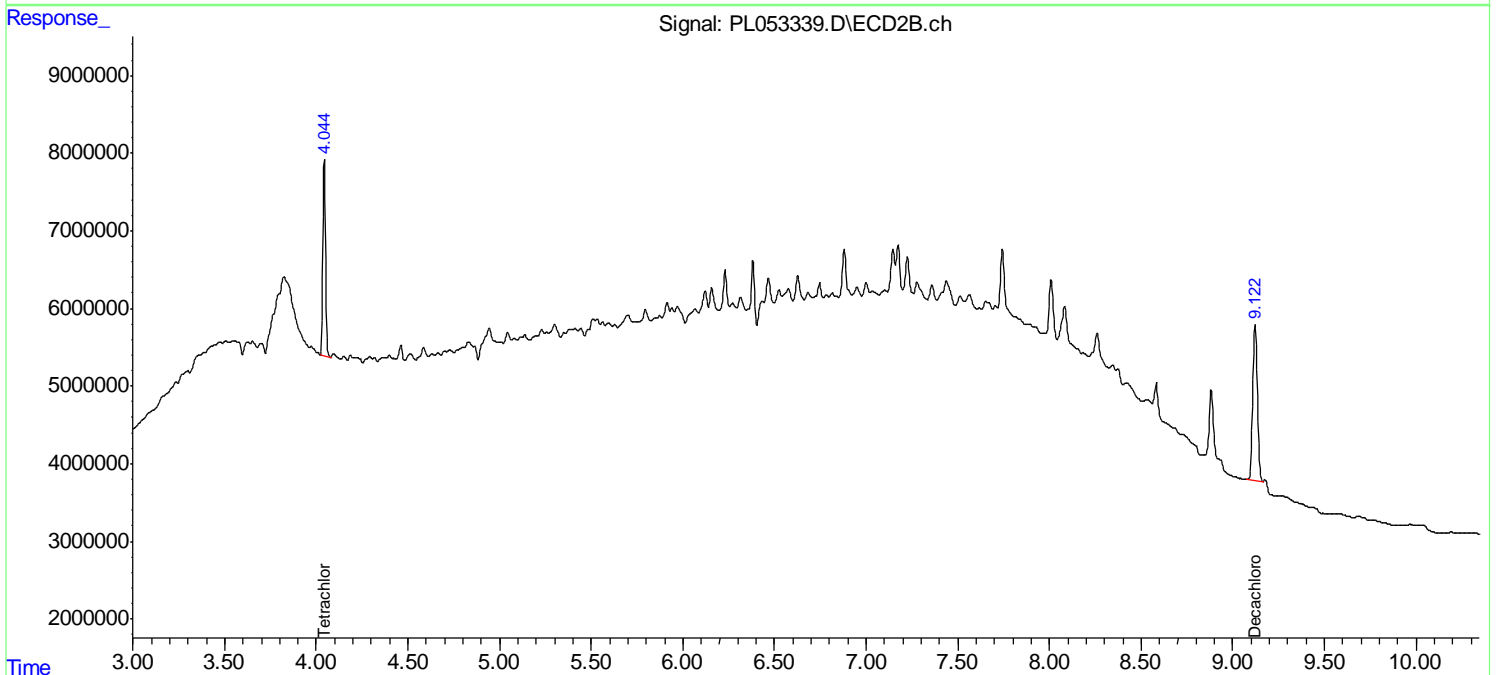
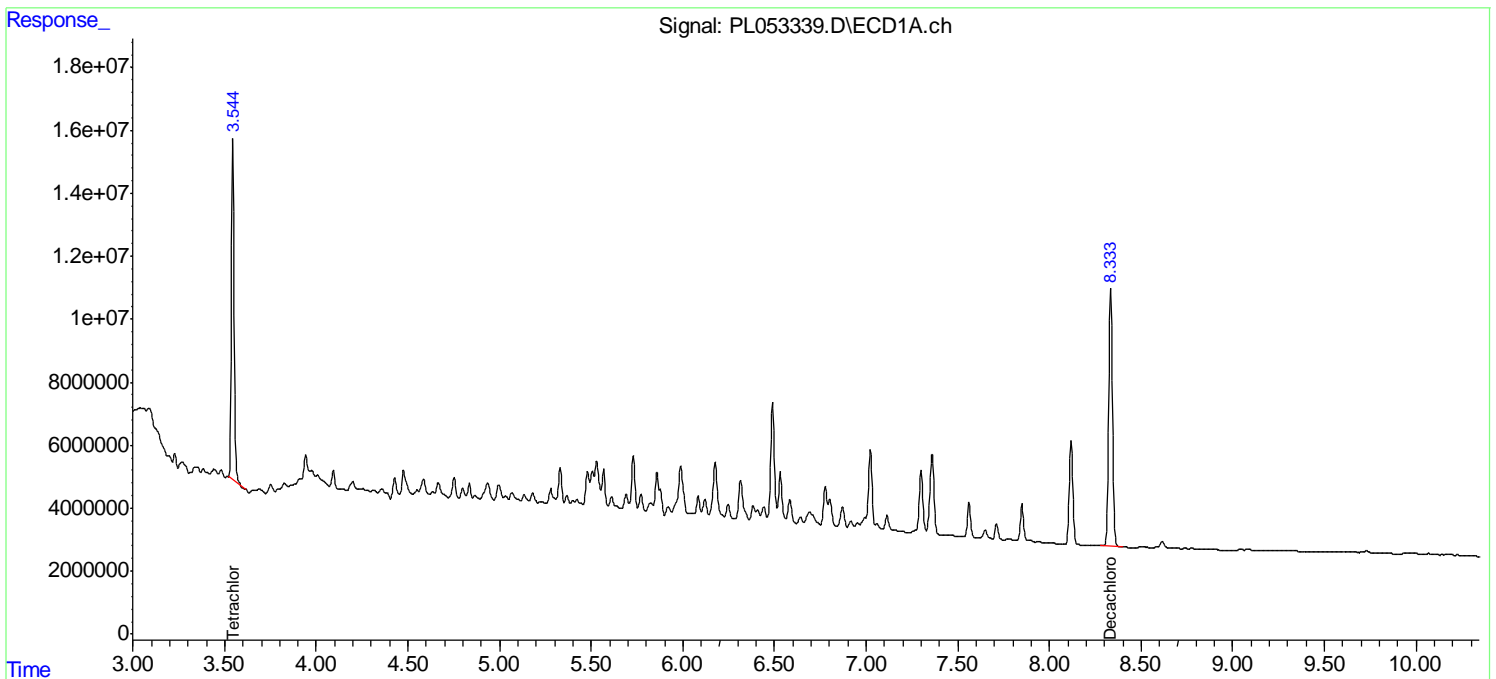
(f)=RT Delta > 1/2 Window (#)=Amounts differ by > 25% (m)=manual int.

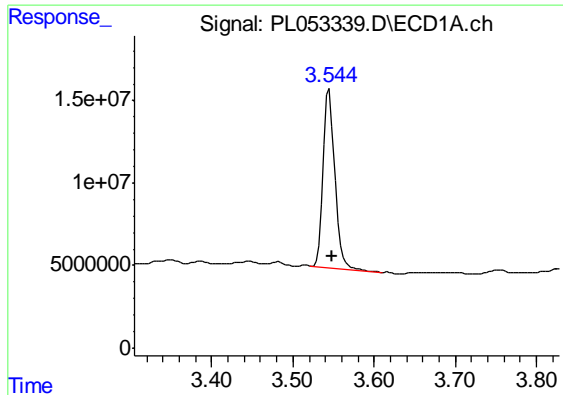
Data Path : Z:\pestpcbsrv\HPCHEM1\ECD\_L\Data\PL101619\  
 Data File : PL053339.D  
 Signal(s) : Signal #1: ECD1A.ch Signal #2: ECD2B.ch  
 Acq On : 15 Oct 2019 14:23  
 Operator : SG\AJ  
 Sample : K5355-04  
 Misc :  
 ALS Vial : 9 Sample Multiplier: 1

Instrument :  
 ECD\_L  
 ClientSampleID :  
 COMP-33

Integration File signal 1: autoint1.e  
 Integration File signal 2: autoint2.e  
 Quant Time: Oct 16 00:42:54 2019  
 Quant Method : Z:\pestpcbsrv\HPCHEM1\ECD\_L\methods\PL092919.M  
 Quant Title : GC Extractables  
 QLast Update : Mon Sep 30 08:44:08 2019  
 Response via : Initial Calibration  
 Integrator: ChemStation

Volume Inj. : 1 µl  
 Signal #1 Phase : ZB-MR2 Signal #2 Phase: ZB-MR1  
 Signal #1 Info : 30M x 0.32mm x0.2 Signal #2 Info : 30M x 0.32mm x0.5µm

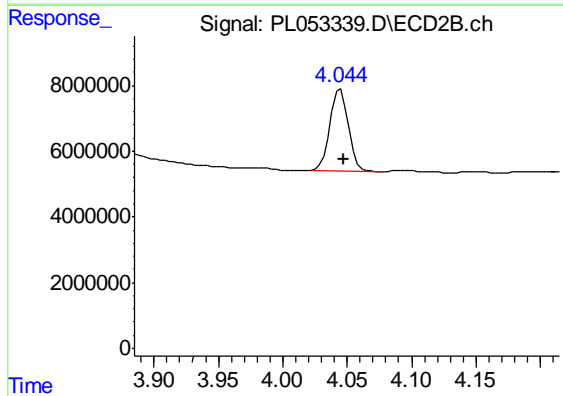




#1 Tetrachloro-m-xylene

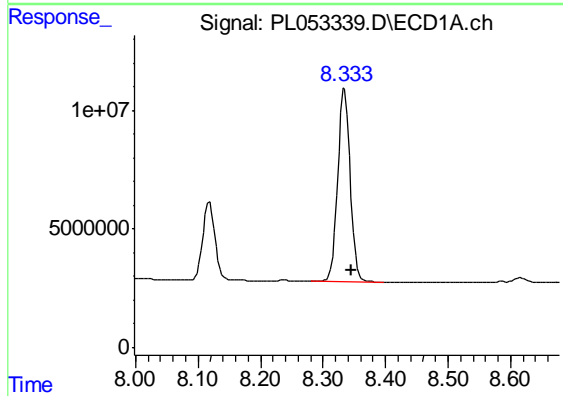
R.T.: 3.545 min  
Delta R.T.: -0.004 min  
Response: 107062153  
Conc: 10.76 ng/ml

Instrument :  
ECD\_L  
ClientSampleId :  
COMP-33



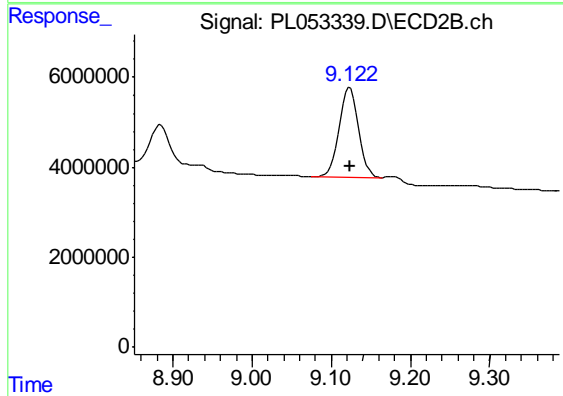
#1 Tetrachloro-m-xylene

R.T.: 4.045 min  
Delta R.T.: -0.002 min  
Response: 25302619  
Conc: 9.42 ng/ml



#28 Decachlorobiphenyl

R.T.: 8.334 min  
Delta R.T.: -0.011 min  
Response: 113379433  
Conc: 11.32 ng/ml



#28 Decachlorobiphenyl

R.T.: 9.124 min  
Delta R.T.: 0.000 min  
Response: 34477647  
Conc: 11.75 ng/ml