

Data Path : Z:\pestpcbsrv\HPCHEM1\ECD_L\Data\PL101719\
 Data File : PL053384.D
 Signal(s) : Signal #1: ECD1A.ch Signal #2: ECD2B.ch
 Acq On : 16 Oct 2019 16:36
 Operator : SG\AJ
 Sample : K5152-06
 Misc :
 ALS Vial : 26 Sample Multiplier: 1

Instrument :
 ECD_L
 ClientSampled :

Integration File signal 1: autoint1.e
 Integration File signal 2: autoint2.e
 Quant Time: Oct 17 00:57:23 2019
 Quant Method : Z:\pestpcbsrv\HPCHEM1\ECD_L\methods\PL092919.M
 Quant Title : GC Extractables
 QLast Update : Mon Sep 30 08:44:08 2019
 Response via : Initial Calibration
 Integrator: ChemStation

Volume Inj. : 1 µl
 Signal #1 Phase : ZB-MR2 Signal #2 Phase: ZB-MR1
 Signal #1 Info : 30M x 0.32mm x0.2 Signal #2 Info : 30M x 0.32mm x0.5µm

Compound	RT#1	RT#2	Resp#1	Resp#2	ng/ml	ng/ml

System Monitoring Compounds						
1) SA Tetrachlo...	3.546	4.046	119.8E6	25925317	12.049	9.655
2) SA Decachlor...	8.336	9.128	107.1E6	30925800	10.689	10.541
Target Compounds						
2) A alpha-BHC	0.000	4.461f	0	6796640	N.D.	1.770 #
3) MA gamma-BHC...	0.000	4.728	0	6799395	N.D.	1.878 #
4) MA Heptachlor	0.000	5.229	0	14383967	N.D.	3.775 #
5) MB Aldrin	0.000	5.538	0	18783424	N.D.	5.420 #
7) B delta-BHC	0.000	5.113	0	4352163	N.D.	1.202 #
8) B Heptachlo...	0.000	5.935	0	7744945	N.D.	2.311 #
9) A Endosulfan I	5.614f	0.000	20705770	0	1.706	N.D. #
10) B gamma-Chl...	0.000	6.159	0	9312990	N.D.	2.753 #
11) B alpha-Chl...	0.000	6.232	0	23336130	N.D.	6.933 #
12) B 4,4'-DDE	5.733	6.385	18353829	7684556	1.581	2.353 #
13) MA Dieldrin	0.000	6.551	0	5466015	N.D.	1.676 #
14) MA Endrin	0.000	6.780f	0	9449979	N.D.	3.403 #
15) B Endosulfa...	0.000	6.973	0	6734366	N.D.	2.270 #
16) A 4,4'-DDD	0.000	6.877	0	4313519	N.D.	1.759 #
17) MA 4,4'-DDT	6.493	7.177	10010156	5041405	0.980	1.937 #
18) B Endrin al...	0.000	7.089	0	3209064	N.D.	1.308 #
23) Chlordane-1	0.000	5.049	0	5826004	N.D.	57.439 #
24) Chlordane-2	0.000	5.538f	0	18783424	N.D.	167.826 #
25) Chlordane-3	0.000	6.159	0	9312990	N.D.	21.384 #
26) Chlordane-4	0.000	6.232	0	23336130	N.D.	43.948 #
27) Chlordane-5	0.000	7.027	0	1179247	N.D.	13.369 #

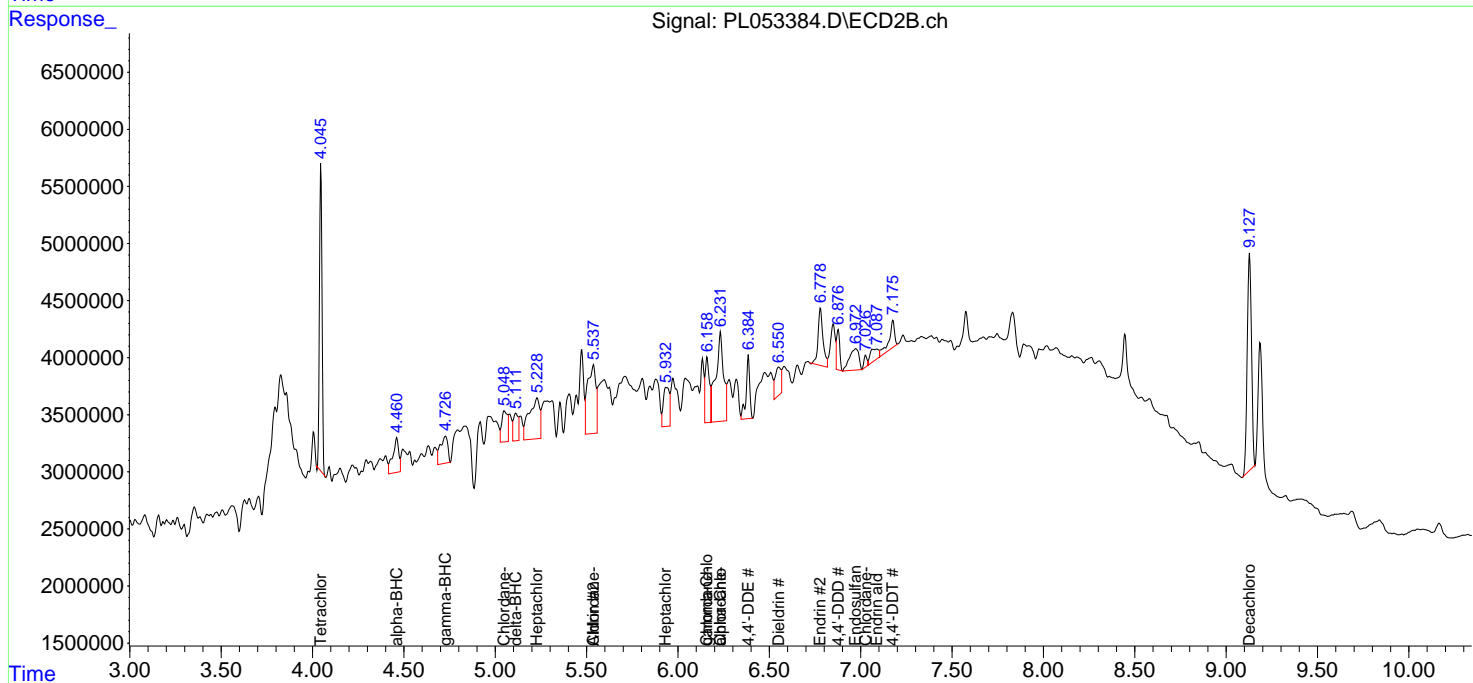
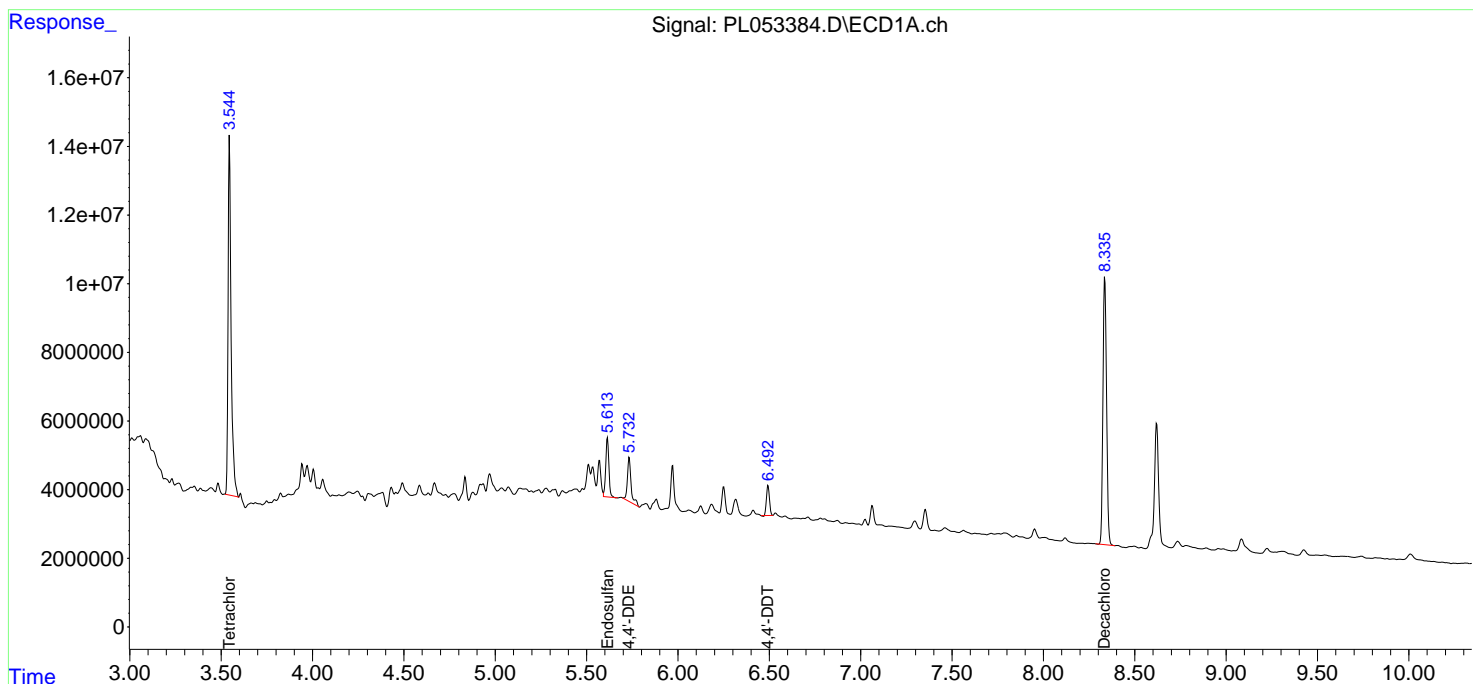
(f)=RT Delta > 1/2 Window (#)=Amounts differ by > 25% (m)=manual int.

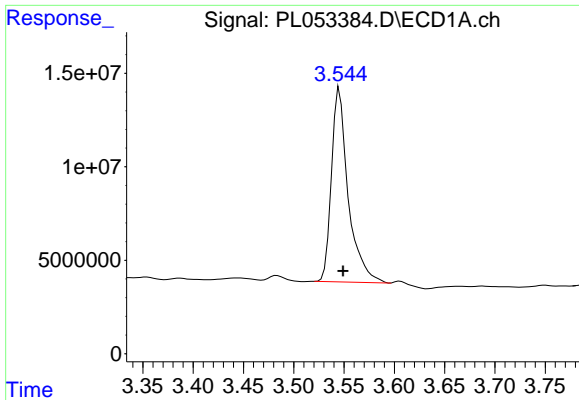
Data Path : Z:\pestpcbsrv\HPCHEM1\ECD_L\Data\PL101719\
 Data File : PL053384.D
 Signal(s) : Signal #1: ECD1A.ch Signal #2: ECD2B.ch
 Acq On : 16 Oct 2019 16:36
 Operator : SG\AJ
 Sample : K5152-06
 Misc :
 ALS Vial : 26 Sample Multiplier: 1

Instrument :
 ECD_L
 ClientSampled :

Integration File signal 1: autoint1.e
 Integration File signal 2: autoint2.e
 Quant Time: Oct 17 00:57:23 2019
 Quant Method : Z:\pestpcbsrv\HPCHEM1\ECD_L\methods\PL092919.M
 Quant Title : GC Extractables
 QLast Update : Mon Sep 30 08:44:08 2019
 Response via : Initial Calibration
 Integrator: ChemStation

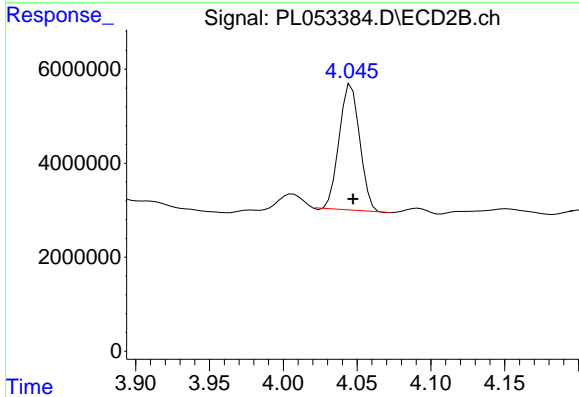
Volume Inj. : 1 µl
 Signal #1 Phase : ZB-MR2 Signal #2 Phase: ZB-MR1
 Signal #1 Info : 30M x 0.32mm x0.2 Signal #2 Info : 30M x 0.32mm x0.5µm



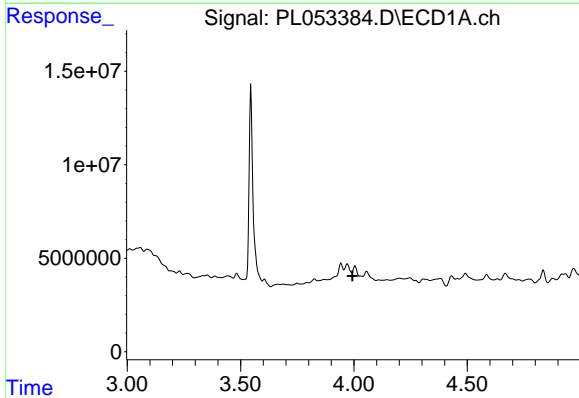


#1 Tetrachloro-m-xylene
 R.T.: 3.546 min
 Delta R.T.: -0.003 min
 Response: 119843983
 Conc: 12.05 ng/ml

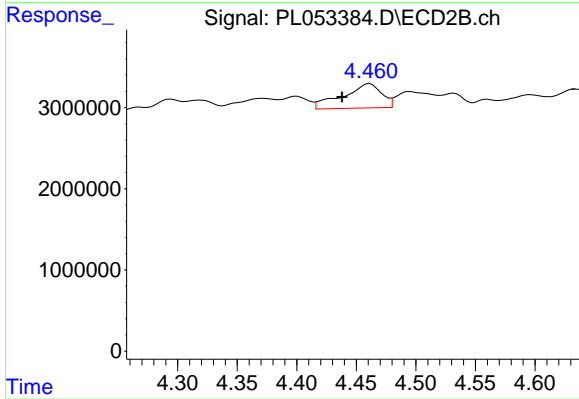
Instrument :
 ECD_L
 ClientSampleId :



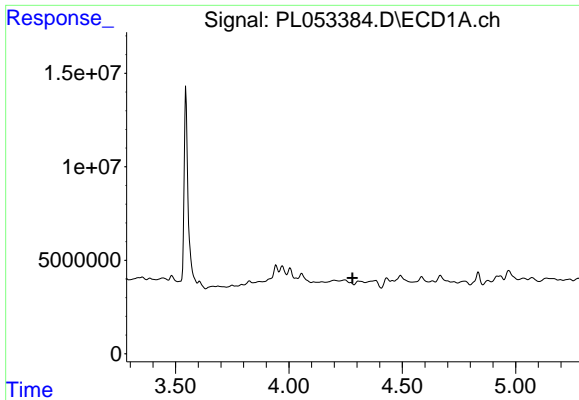
#1 Tetrachloro-m-xylene
 R.T.: 4.046 min
 Delta R.T.: -0.001 min
 Response: 25925317
 Conc: 9.65 ng/ml



#2 alpha-BHC
 R.T.: 0.000 min
 Exp R.T. : 3.994 min
 Response: 0
 Conc: N.D.

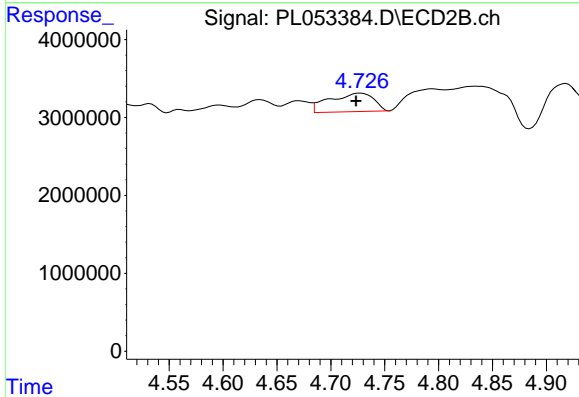


#2 alpha-BHC
 R.T.: 4.461 min
 Delta R.T.: 0.023 min
 Response: 6796640
 Conc: 1.77 ng/ml

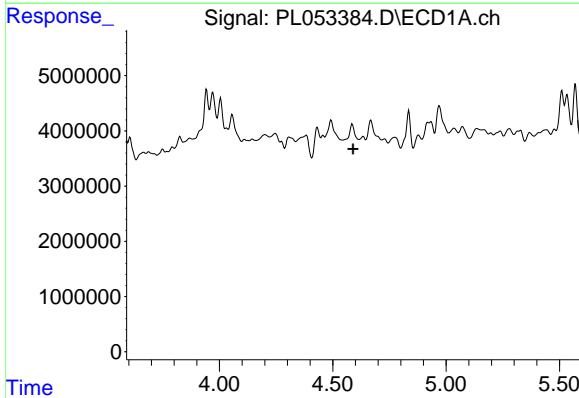


#3 gamma-BHC (Lindane)
 R.T.: 0.000 min
 Exp R.T. : 4.281 min
 Response: 0
 Conc: N.D.

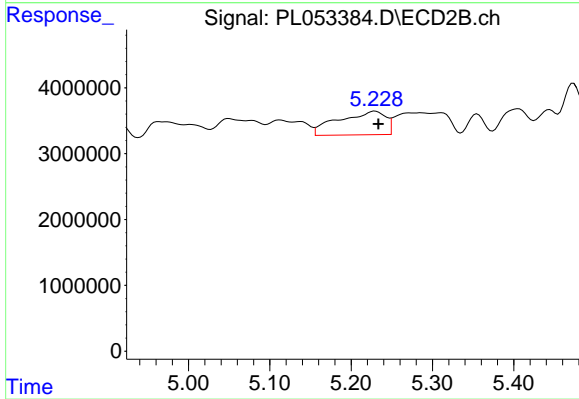
Instrument :
 ECD_L
 ClientSampleId :



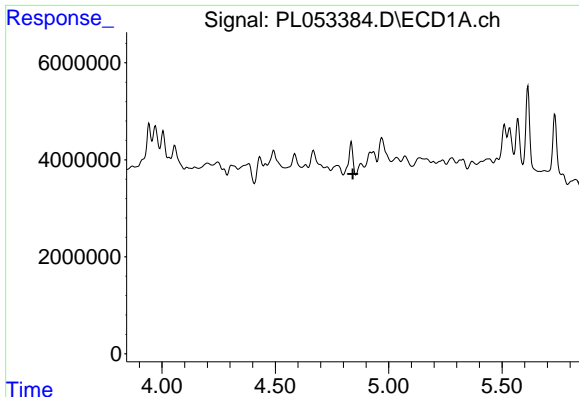
#3 gamma-BHC (Lindane)
 R.T.: 4.728 min
 Delta R.T.: 0.004 min
 Response: 6799395
 Conc: 1.88 ng/ml



#4 Heptachlor
 R.T.: 0.000 min
 Exp R.T. : 4.590 min
 Response: 0
 Conc: N.D.

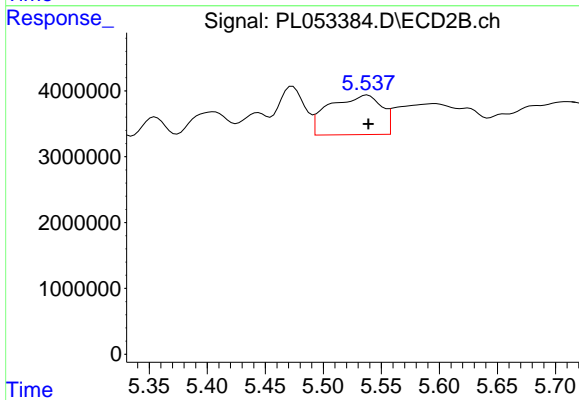


#4 Heptachlor
 R.T.: 5.229 min
 Delta R.T.: -0.004 min
 Response: 14383967
 Conc: 3.77 ng/ml

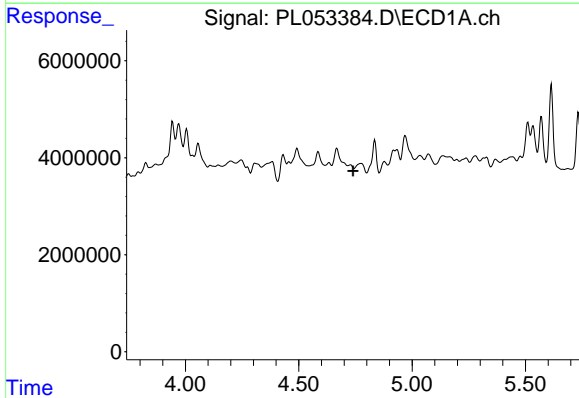


#5 Aldrin
 R.T.: 0.000 min
 Exp R.T.: 4.843 min
 Response: 0
 Conc: N.D.

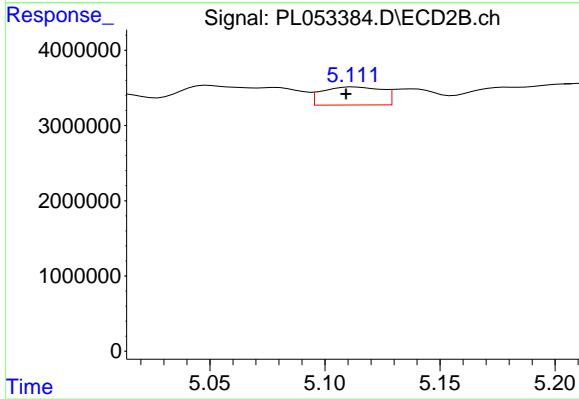
Instrument :
 ECD_L
 ClientSampleId :



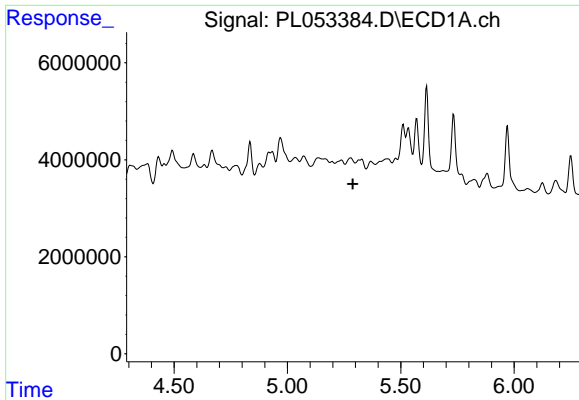
#5 Aldrin
 R.T.: 5.538 min
 Delta R.T.: 0.000 min
 Response: 18783424
 Conc: 5.42 ng/ml



#7 delta-BHC
 R.T.: 0.000 min
 Exp R.T.: 4.740 min
 Response: 0
 Conc: N.D.

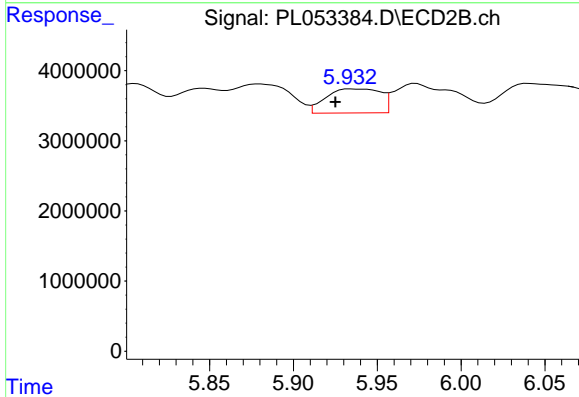


#7 delta-BHC
 R.T.: 5.113 min
 Delta R.T.: 0.003 min
 Response: 4352163
 Conc: 1.20 ng/ml

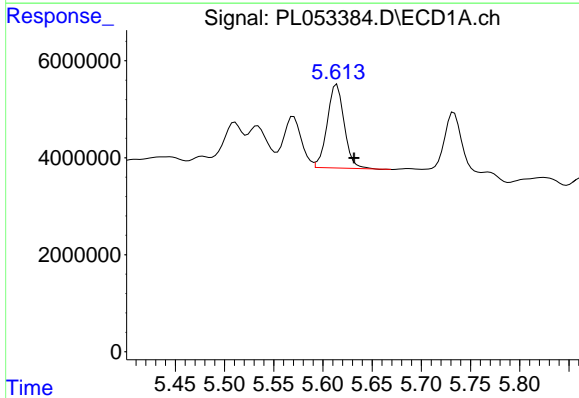


#8 Heptachlor epoxide
 R.T.: 0.000 min
 Exp R.T.: 5.289 min
 Response: 0
 Conc: N.D.

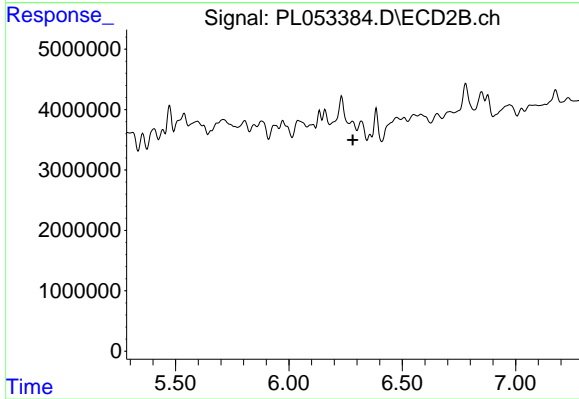
Instrument :
 ECD_L
 ClientSampled :



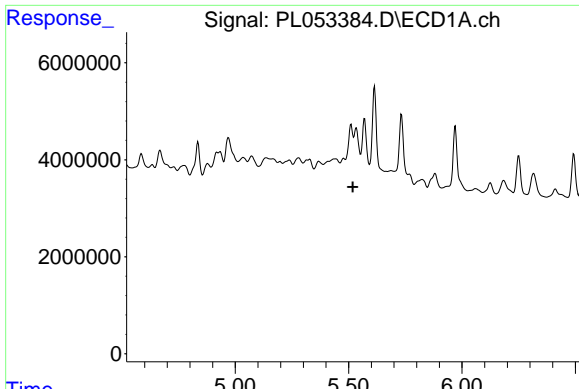
#8 Heptachlor epoxide
 R.T.: 5.935 min
 Delta R.T.: 0.010 min
 Response: 7744945
 Conc: 2.31 ng/ml



#9 Endosulfan I
 R.T.: 5.614 min
 Delta R.T.: -0.017 min
 Response: 20705770
 Conc: 1.71 ng/ml



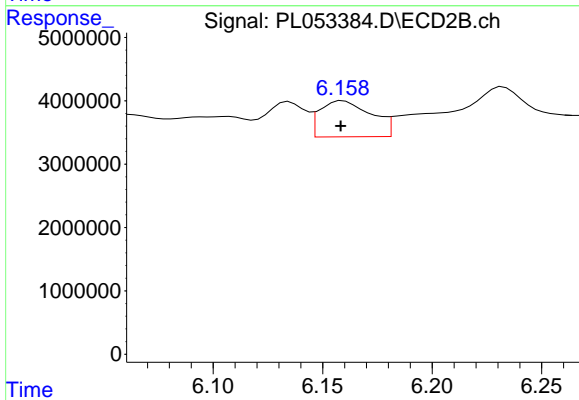
#9 Endosulfan I
 R.T.: 0.000 min
 Exp R.T.: 6.281 min
 Response: 0
 Conc: N.D.



#10 gamma-Chlordane

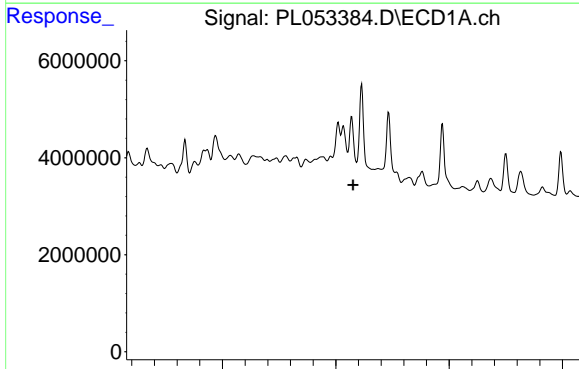
R.T.: 0.000 min
 Exp R.T. : 5.518 min
 Response: 0
 Conc: N.D.

Instrument :
 ECD_L
 ClientSampleId :



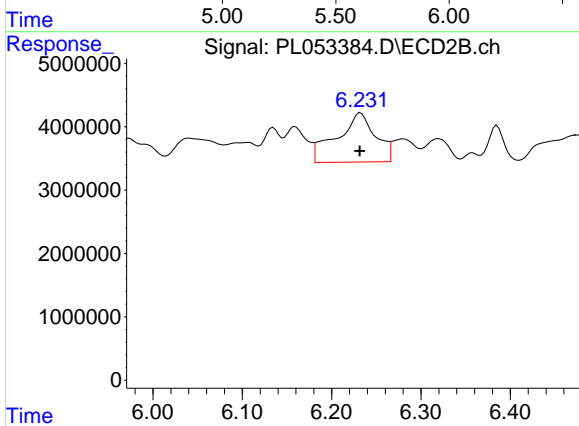
#10 gamma-Chlordane

R.T.: 6.159 min
 Delta R.T.: 0.001 min
 Response: 9312990
 Conc: 2.75 ng/ml



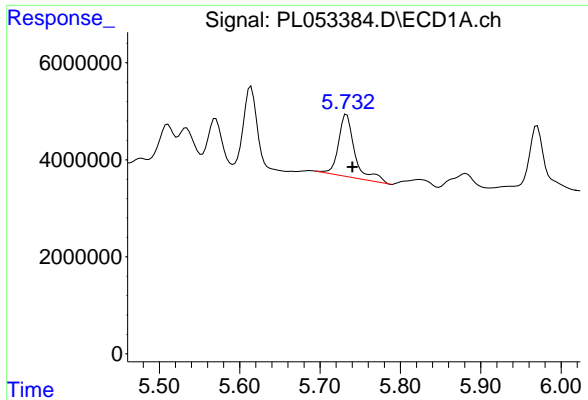
#11 alpha-Chlordane

R.T.: 0.000 min
 Exp R.T. : 5.577 min
 Response: 0
 Conc: N.D.



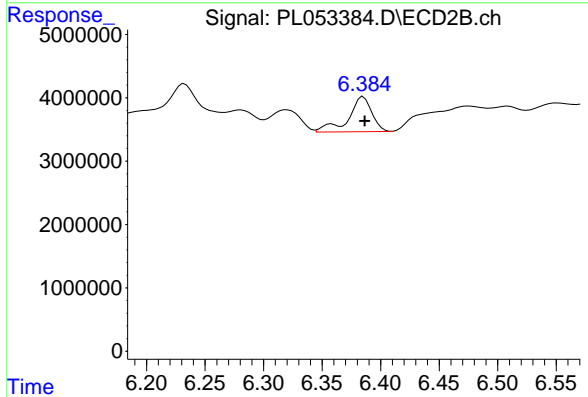
#11 alpha-Chlordane

R.T.: 6.232 min
 Delta R.T.: 0.001 min
 Response: 23336130
 Conc: 6.93 ng/ml

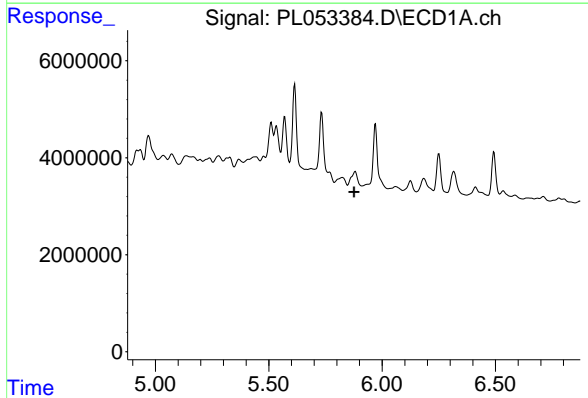


#12 4,4'-DDE
 R.T.: 5.733 min
 Delta R.T.: -0.007 min
 Response: 18353829
 Conc: 1.58 ng/ml

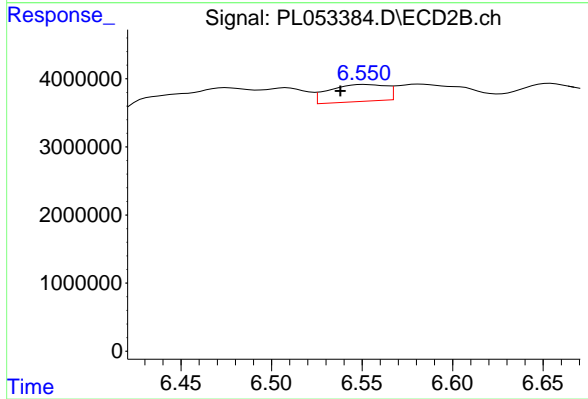
Instrument :
 ECD_L
 ClientSampled :



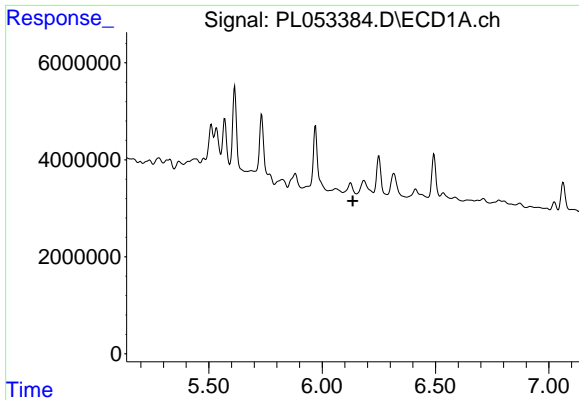
#12 4,4'-DDE
 R.T.: 6.385 min
 Delta R.T.: -0.001 min
 Response: 7684556
 Conc: 2.35 ng/ml



#13 Dieldrin
 R.T.: 0.000 min
 Exp R.T. : 5.876 min
 Response: 0
 Conc: N.D.



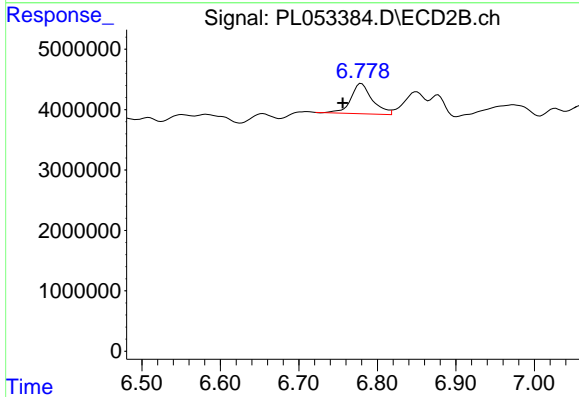
#13 Dieldrin
 R.T.: 6.551 min
 Delta R.T.: 0.013 min
 Response: 5466015
 Conc: 1.68 ng/ml



#14 Endrin

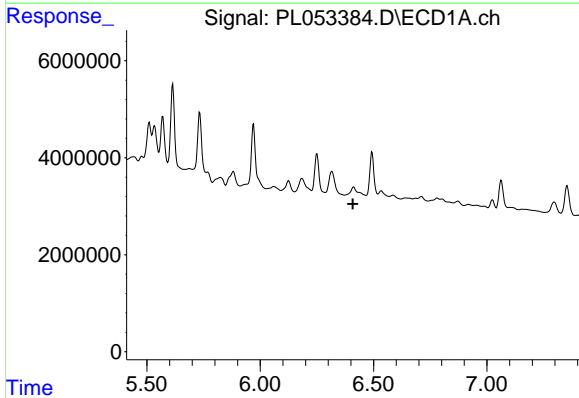
R.T.: 0.000 min
 Exp R.T. : 6.135 min
 Response: 0
 Conc: N.D.

Instrument :
 ECD_L
 ClientSampleId :



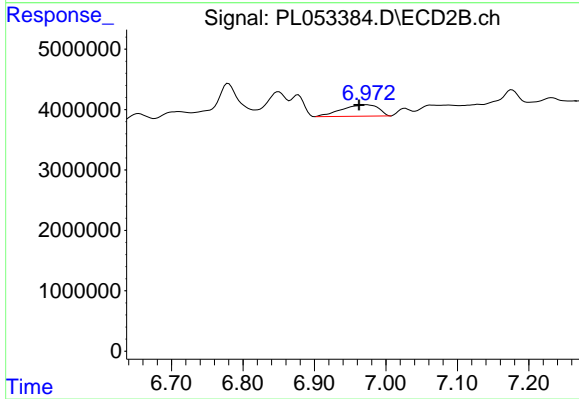
#14 Endrin

R.T.: 6.780 min
 Delta R.T.: 0.024 min
 Response: 9449979
 Conc: 3.40 ng/ml



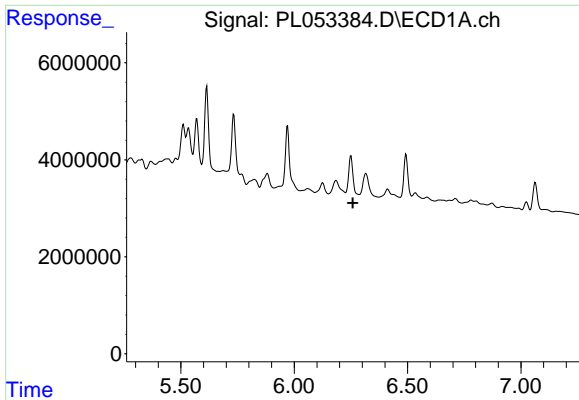
#15 Endosulfan II

R.T.: 0.000 min
 Exp R.T. : 6.408 min
 Response: 0
 Conc: N.D.



#15 Endosulfan II

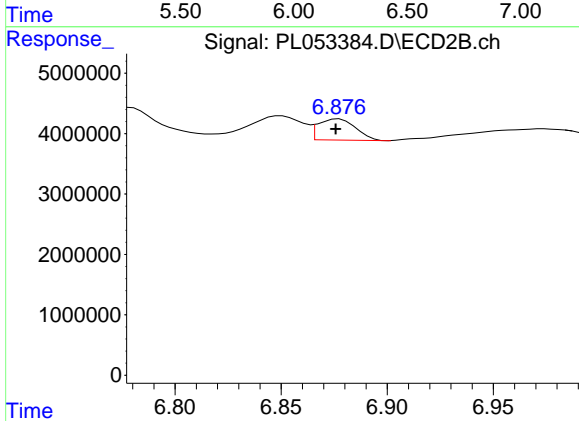
R.T.: 6.973 min
 Delta R.T.: 0.011 min
 Response: 6734366
 Conc: 2.27 ng/ml



#16 4,4'-DDD

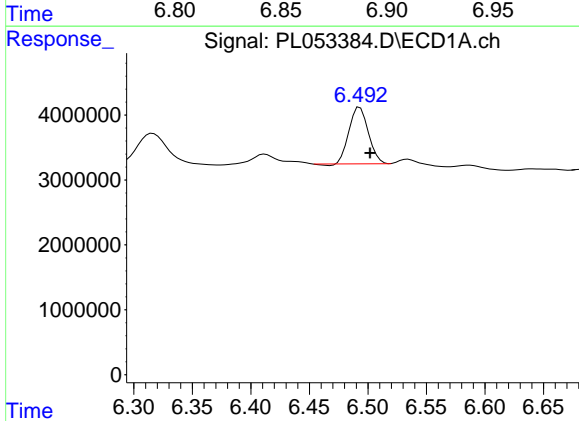
R.T.: 0.000 min
 Exp R.T.: 6.258 min
 Response: 0
 Conc: N.D.

Instrument :
 ECD_L
 ClientSampled :



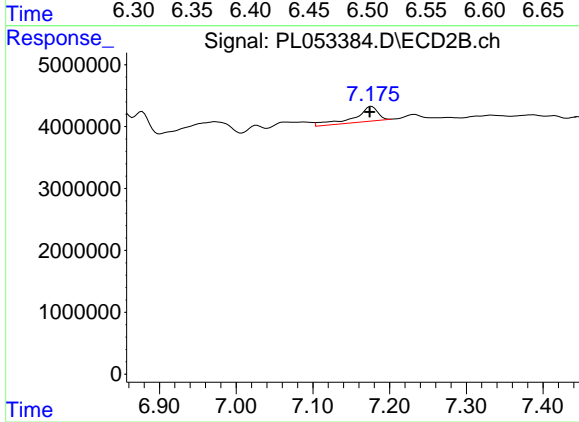
#16 4,4'-DDD

R.T.: 6.877 min
 Delta R.T.: 0.001 min
 Response: 4313519
 Conc: 1.76 ng/ml



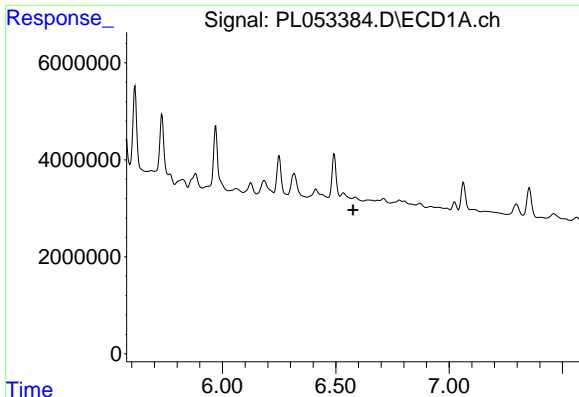
#17 4,4'-DDT

R.T.: 6.493 min
 Delta R.T.: -0.009 min
 Response: 10010156
 Conc: 0.98 ng/ml



#17 4,4'-DDT

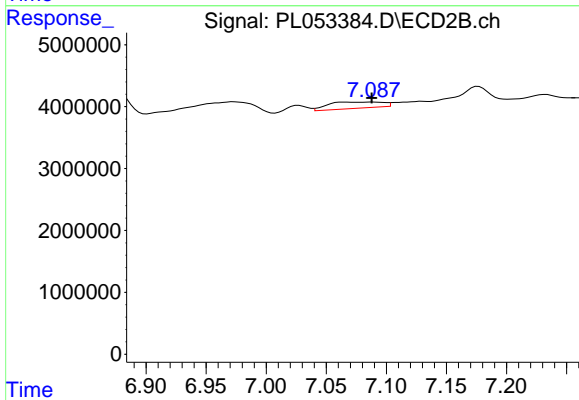
R.T.: 7.177 min
 Delta R.T.: 0.002 min
 Response: 5041405
 Conc: 1.94 ng/ml



#18 Endrin aldehyde

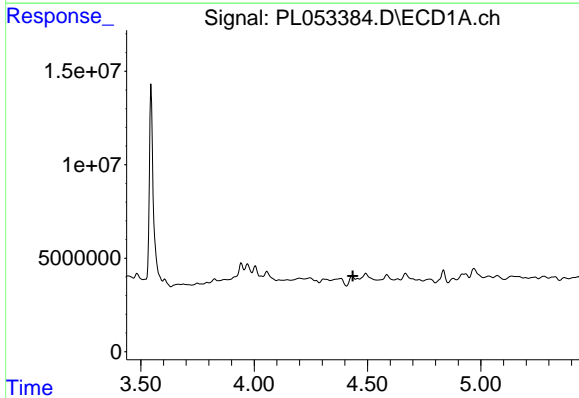
R.T.: 0.000 min
 Exp R.T. : 6.577 min
 Response: 0
 Conc: N.D.

Instrument :
 ECD_L
 ClientSampled :



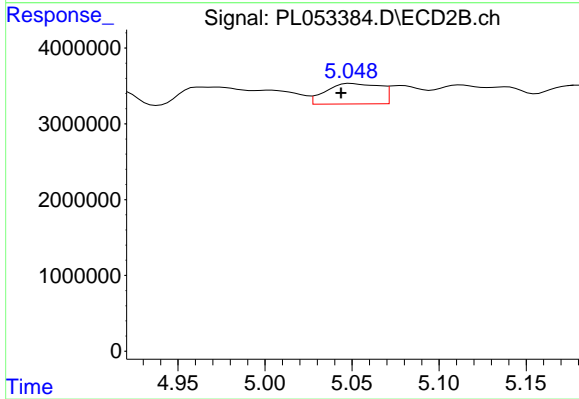
#18 Endrin aldehyde

R.T.: 7.089 min
 Delta R.T.: 0.001 min
 Response: 3209064
 Conc: 1.31 ng/ml



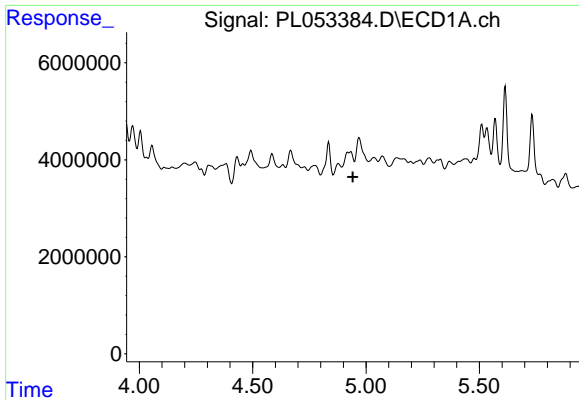
#23 Chlordane-1

R.T.: 0.000 min
 Exp R.T. : 4.435 min
 Response: 0
 Conc: N.D.



#23 Chlordane-1

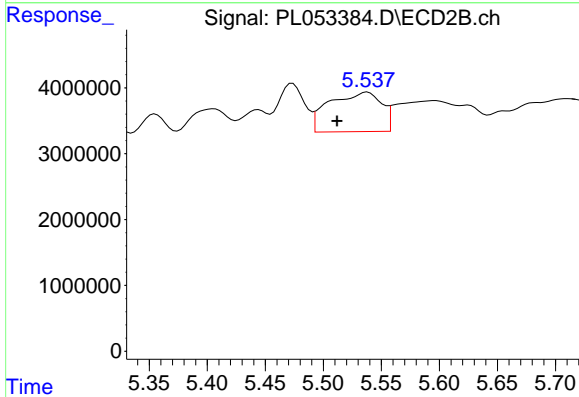
R.T.: 5.049 min
 Delta R.T.: 0.006 min
 Response: 5826004
 Conc: 57.44 ng/ml



#24 Chlordane-2

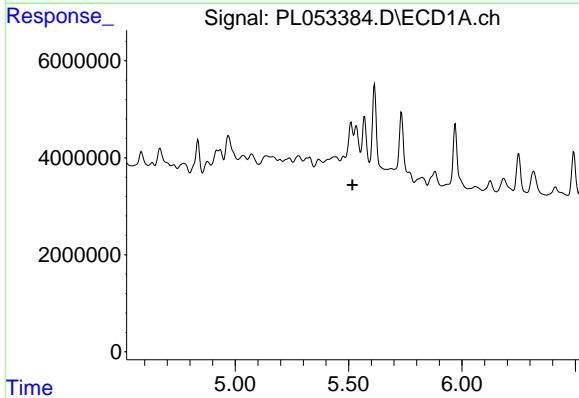
R.T.: 0.000 min
 Exp R.T.: 4.942 min
 Response: 0
 Conc: N.D.

Instrument :
 ECD_L
 ClientSampled :



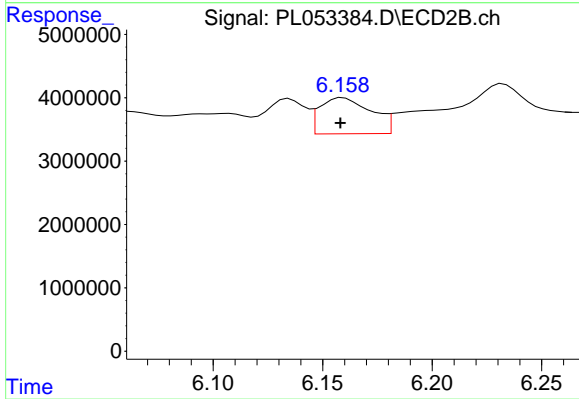
#24 Chlordane-2

R.T.: 5.538 min
 Delta R.T.: 0.026 min
 Response: 18783424
 Conc: 167.83 ng/ml



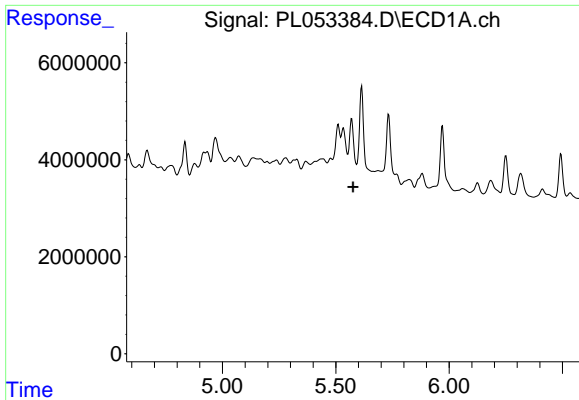
#25 Chlordane-3

R.T.: 0.000 min
 Exp R.T.: 5.518 min
 Response: 0
 Conc: N.D.



#25 Chlordane-3

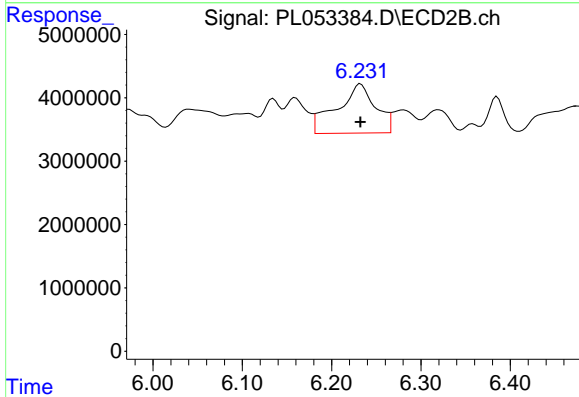
R.T.: 6.159 min
 Delta R.T.: 0.001 min
 Response: 9312990
 Conc: 21.38 ng/ml



#26 Chlordane-4

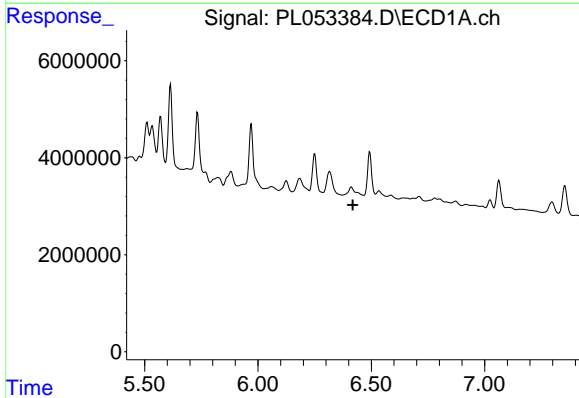
R.T.: 0.000 min
 Exp R.T. : 5.577 min
 Response: 0
 Conc: N.D.

Instrument :
 ECD_L
 ClientSampled :



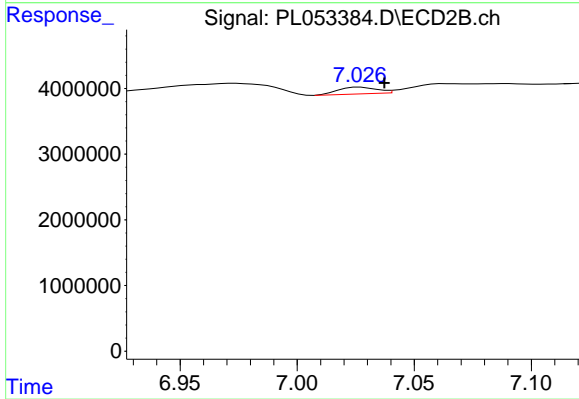
#26 Chlordane-4

R.T.: 6.232 min
 Delta R.T.: 0.000 min
 Response: 23336130
 Conc: 43.95 ng/ml



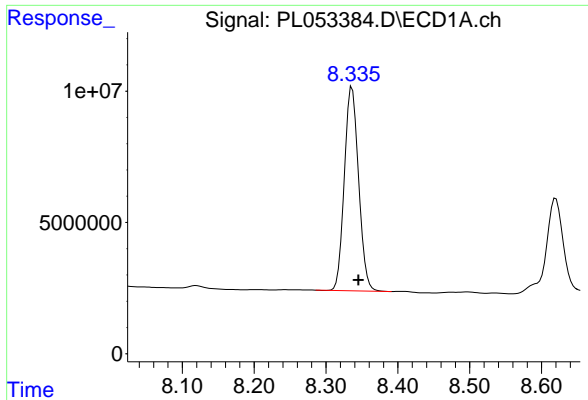
#27 Chlordane-5

R.T.: 0.000 min
 Exp R.T. : 6.418 min
 Response: 0
 Conc: N.D.



#27 Chlordane-5

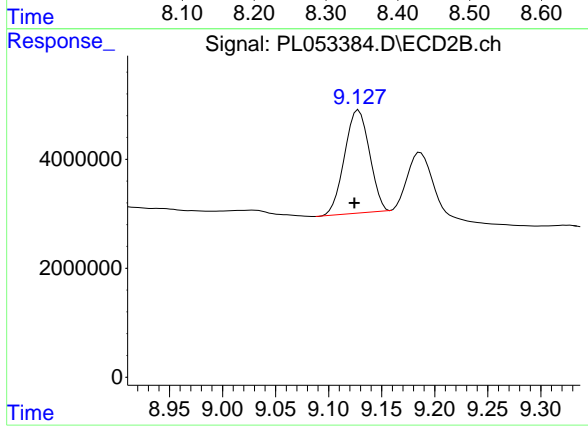
R.T.: 7.027 min
 Delta R.T.: -0.010 min
 Response: 1179247
 Conc: 13.37 ng/ml



#28 Decachlorobiphenyl

R.T.: 8.336 min
Delta R.T.: -0.009 min
Response: 107063138
Conc: 10.69 ng/ml

Instrument :
ECD_L
ClientSampleId :



#28 Decachlorobiphenyl

R.T.: 9.128 min
Delta R.T.: 0.004 min
Response: 30925800
Conc: 10.54 ng/ml