

Data Path : Z:\pestpcbsrv\HPCHEM1\ECD_L\Data\PL101719\
 Data File : PL053394.D
 Signal(s) : Signal #1: ECD1A.ch Signal #2: ECD2B.ch
 Acq On : 16 Oct 2019 18:55
 Operator : SG\AJ
 Sample : PSTDCCC050
 Misc :
 ALS Vial : 4 Sample Multiplier: 1

Instrument :
 ECD_L
 ClientSampleId :

Integration File signal 1: autoint1.e
 Integration File signal 2: autoint2.e
 Quant Time: Oct 17 00:59:29 2019
 Quant Method : Z:\pestpcbsrv\HPCHEM1\ECD_L\methods\PL092919.M
 Quant Title : GC Extractables
 QLast Update : Mon Sep 30 08:44:08 2019
 Response via : Initial Calibration
 Integrator: ChemStation

Volume Inj. : 1 µl
 Signal #1 Phase : ZB-MR2 Signal #2 Phase: ZB-MR1
 Signal #1 Info : 30M x 0.32mm x0.2 Signal #2 Info : 30M x 0.32mm x0.5µm

	Compound	RT#1	RT#2	Resp#1	Resp#2	ng/ml	ng/ml

System Monitoring Compounds							
1)	SA Tetrachlo...	3.545	4.047	545.5E6	130.0E6	54.838	48.422
28)	SA Decachlor...	8.338	9.131	419.4E6	132.6E6	41.872	45.201
Target Compounds							
2)	A alpha-BHC	3.989	4.439	895.3E6	187.3E6	56.129	48.780
3)	MA gamma-BHC...	4.276	4.724	812.5E6	171.2E6	55.788	47.278
4)	MA Heptachlor	4.584	5.235	795.4E6	176.8E6	53.231	46.384
5)	MB Aldrin	4.836	5.540	764.1E6	166.8E6	55.548	48.132
6)	B beta-BHC	4.526	4.894	332.7E6	79366763	53.580	50.494
7)	B delta-BHC	4.735	5.112	795.7E6	176.5E6	55.532	48.756
8)	Heptachlo...	5.282	5.927	689.2E6	165.3E6	52.893	49.330
9)	A Endosulfan I	5.625	6.284	602.8E6	147.9E6	49.674	47.312
10)	B gamma-Chl...	5.511	6.161	684.2E6	168.2E6	50.873	49.709
11)	B alpha-Chl...	5.570	6.234	654.0E6	159.0E6	49.585	47.231
12)	B 4,4'-DDE	5.733	6.390	553.5E6	157.3E6	47.688	48.149
13)	MA Dieldrin	5.870	6.541	639.8E6	162.1E6	49.563	49.693
14)	MA Endrin	6.129	6.759	529.3E6	127.8E6	46.471	46.028
15)	B Endosulfa...	6.402	6.968	543.3E6	144.5E6	47.414	48.698
16)	A 4,4'-DDD	6.252	6.880	482.1E6	137.8E6	53.638	56.191
17)	MA 4,4'-DDT	6.494	7.179	446.0E6	114.8E6	43.674	44.113
18)	B Endrin al...	6.570	7.092	421.9E6	115.0E6	44.925	46.903
19)	B Endosulfa...	6.784	7.315	462.0E6	122.0E6	44.387	44.696
20)	A Methoxychlor	7.040	7.637	211.9E6	71516141	41.074	50.795
21)	B Endrin ke...	7.278	7.787	513.6E6	145.6E6	44.067	51.043
22)	Mirex	7.473	8.243	371.7E6	106.8E6	39.360	47.502
24)	Chlordane-2	0.000	5.540f	0	166.8E6	N.D.	1490.397 #
25)	Chlordane-3	5.511	6.161	684.2E6	168.2E6	590.448	386.150 #
26)	Chlordane-4	5.570	6.234	654.0E6	159.0E6	685.234	299.396 #
27)	Chlordane-5	6.402f	0.000	543.3E6	0	1377.526	N.D. #

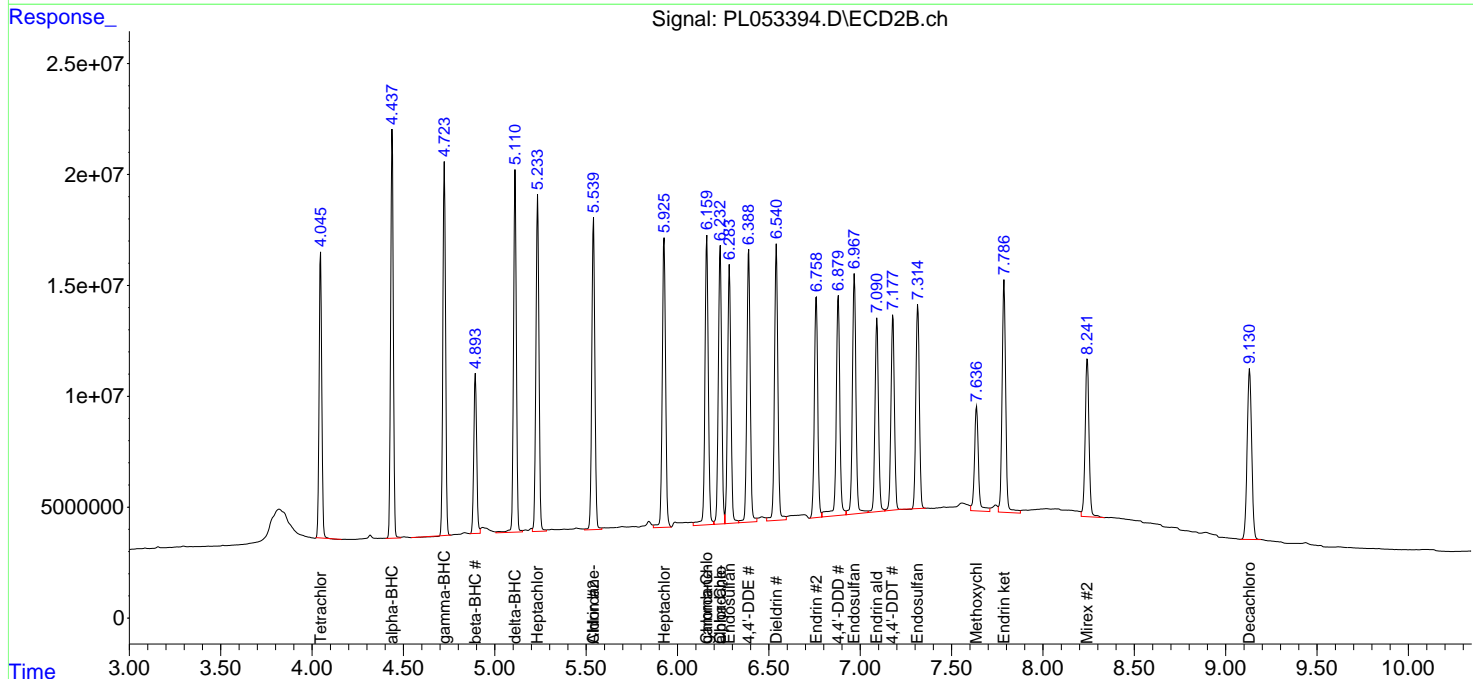
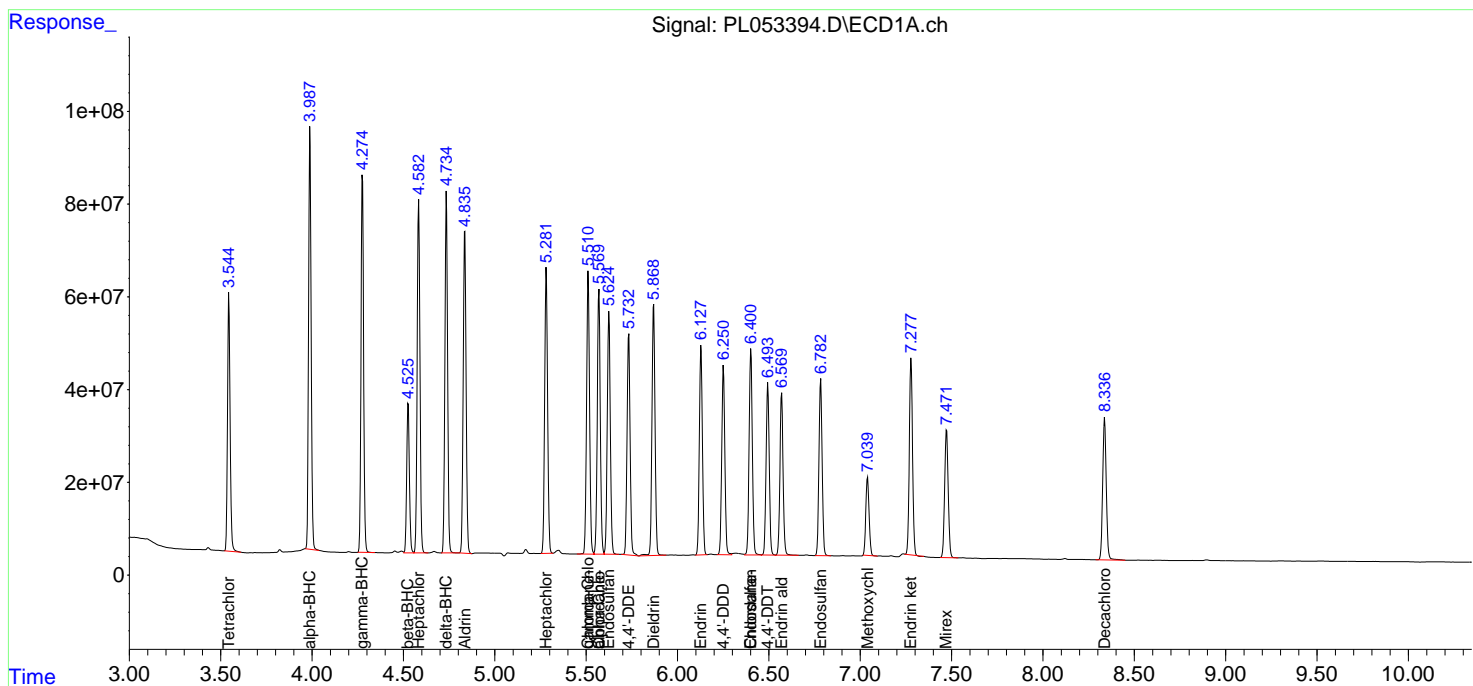
(f)=RT Delta > 1/2 Window (#)=Amounts differ by > 25% (m)=manual int.

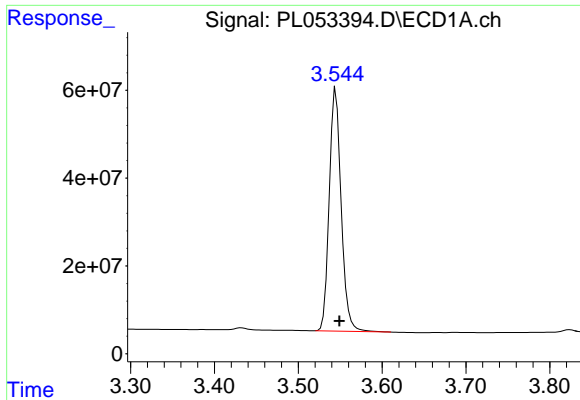
Data Path : Z:\pestpcbsrv\HPCHEM1\ECD_L\Data\PL101719\
 Data File : PL053394.D
 Signal(s) : Signal #1: ECD1A.ch Signal #2: ECD2B.ch
 Acq On : 16 Oct 2019 18:55
 Operator : SG\AJ
 Sample : PSTDCCC050
 Misc :
 ALS Vial : 4 Sample Multiplier: 1

Instrument :
 ECD_L
 ClientSampled :

Integration File signal 1: autoint1.e
 Integration File signal 2: autoint2.e
 Quant Time: Oct 17 00:59:29 2019
 Quant Method : Z:\pestpcbsrv\HPCHEM1\ECD_L\methods\PL092919.M
 Quant Title : GC Extractables
 QLast Update : Mon Sep 30 08:44:08 2019
 Response via : Initial Calibration
 Integrator: ChemStation

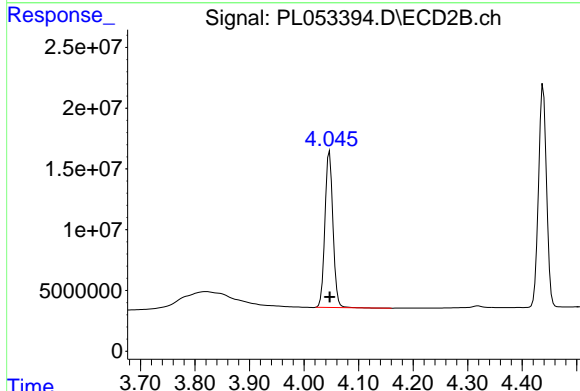
Volume Inj. : 1 µl
 Signal #1 Phase : ZB-MR2 Signal #2 Phase: ZB-MR1
 Signal #1 Info : 30M x 0.32mm x0.2 Signal #2 Info : 30M x 0.32mm x0.5µm



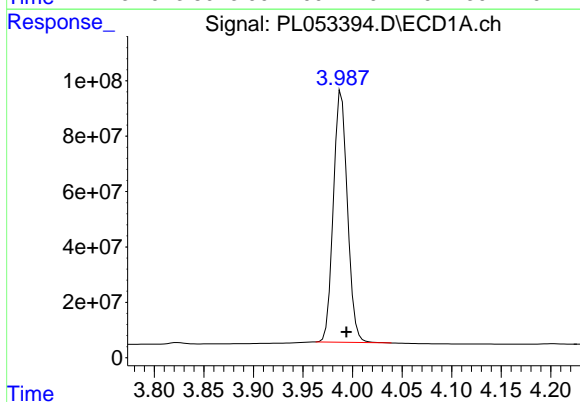


#1 Tetrachloro-m-xylene
 R.T.: 3.545 min
 Delta R.T.: -0.004 min
 Response: 545455814
 Conc: 54.84 ng/ml

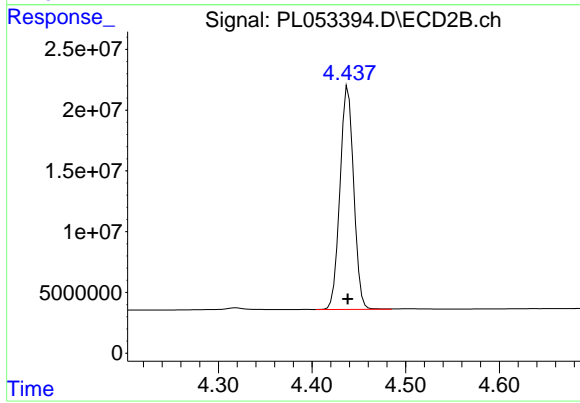
Instrument :
 ECD_L
 ClientSampled :



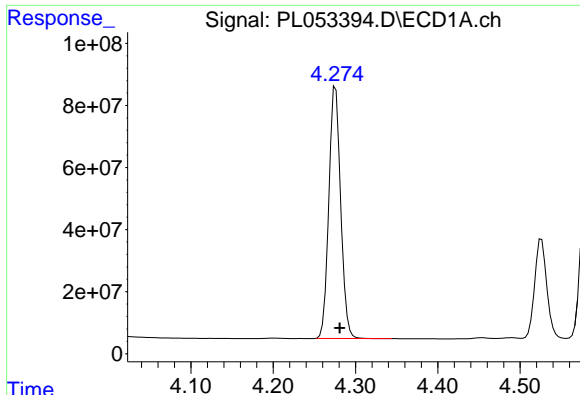
#1 Tetrachloro-m-xylene
 R.T.: 4.047 min
 Delta R.T.: 0.000 min
 Response: 130023869
 Conc: 48.42 ng/ml



#2 alpha-BHC
 R.T.: 3.989 min
 Delta R.T.: -0.005 min
 Response: 895283450
 Conc: 56.13 ng/ml



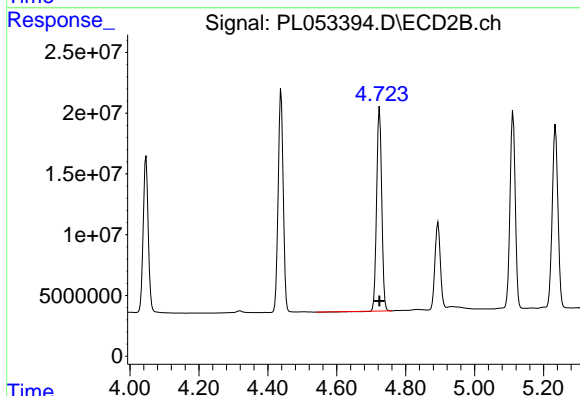
#2 alpha-BHC
 R.T.: 4.439 min
 Delta R.T.: 0.000 min
 Response: 187316880
 Conc: 48.78 ng/ml



#3 gamma-BHC (Lindane)

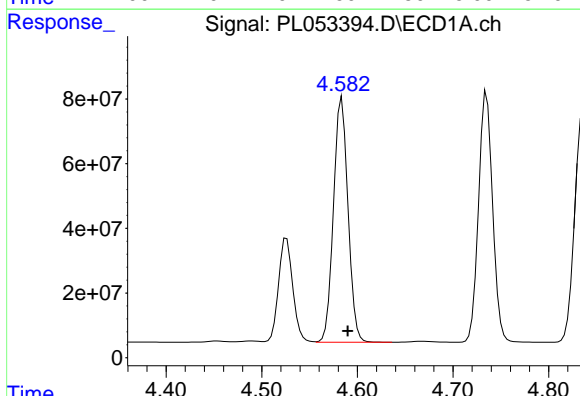
R.T.: 4.276 min
 Delta R.T.: -0.005 min
 Response: 812537416
 Conc: 55.79 ng/ml

Instrument :
 ECD_L
 ClientSampled :



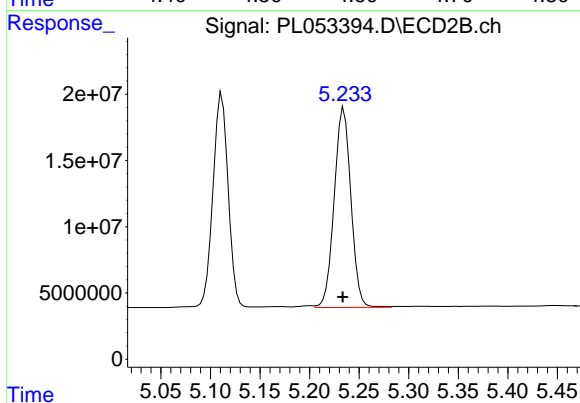
#3 gamma-BHC (Lindane)

R.T.: 4.724 min
 Delta R.T.: 0.000 min
 Response: 171203456
 Conc: 47.28 ng/ml



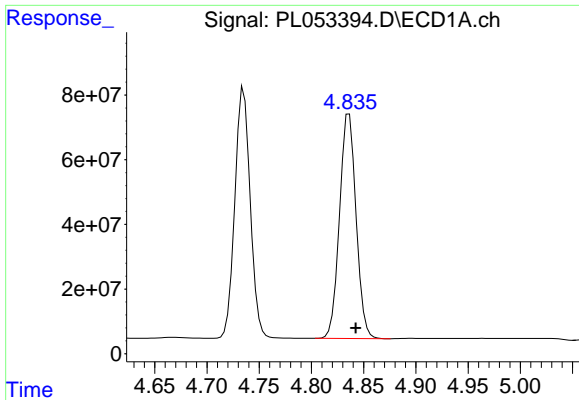
#4 Heptachlor

R.T.: 4.584 min
 Delta R.T.: -0.006 min
 Response: 795373387
 Conc: 53.23 ng/ml



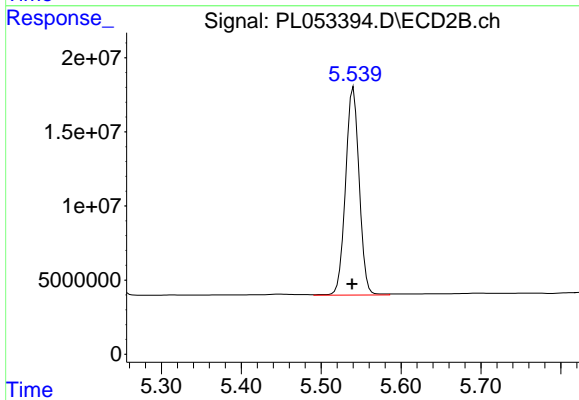
#4 Heptachlor

R.T.: 5.235 min
 Delta R.T.: 0.001 min
 Response: 176757253
 Conc: 46.38 ng/ml

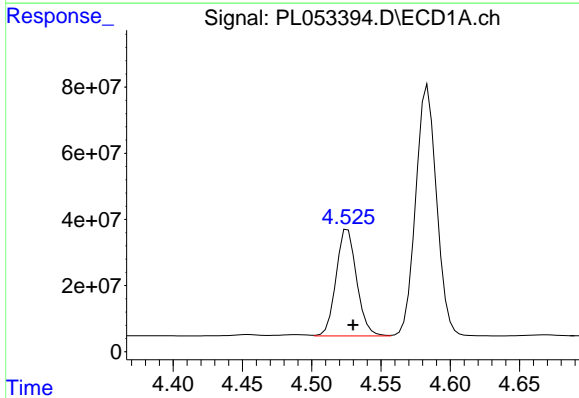


#5 Aldrin
 R.T.: 4.836 min
 Delta R.T.: -0.006 min
 Response: 764073017
 Conc: 55.55 ng/ml

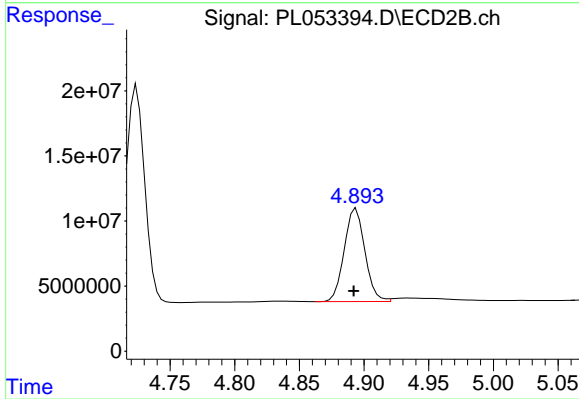
Instrument :
 ECD_L
 ClientSampled :



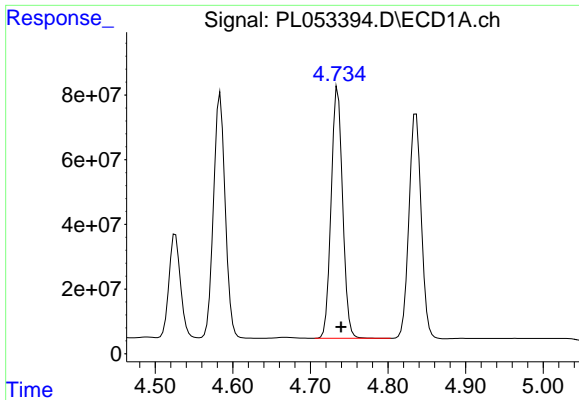
#5 Aldrin
 R.T.: 5.540 min
 Delta R.T.: 0.002 min
 Response: 166808753
 Conc: 48.13 ng/ml



#6 beta-BHC
 R.T.: 4.526 min
 Delta R.T.: -0.004 min
 Response: 332656413
 Conc: 53.58 ng/ml

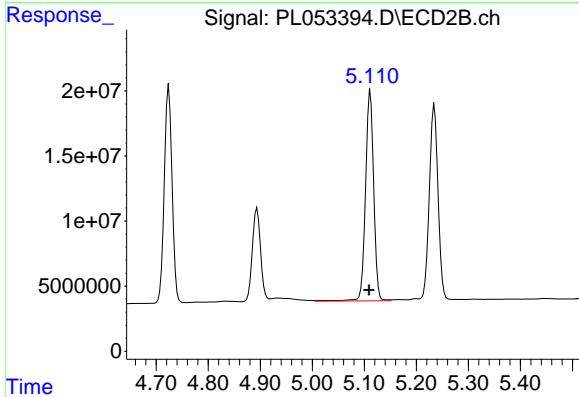


#6 beta-BHC
 R.T.: 4.894 min
 Delta R.T.: 0.002 min
 Response: 79366763
 Conc: 50.49 ng/ml

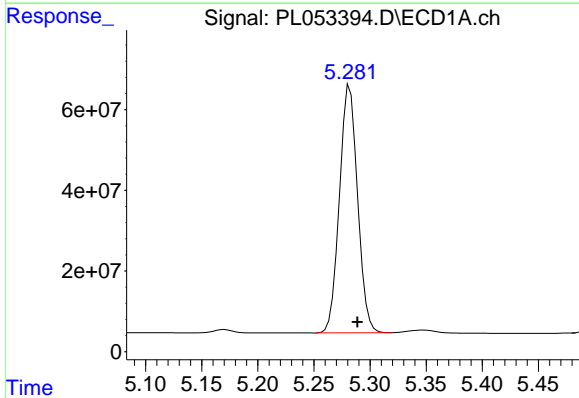


#7 delta-BHC
R.T.: 4.735 min
Delta R.T.: -0.004 min
Response: 795727998
Conc: 55.53 ng/ml

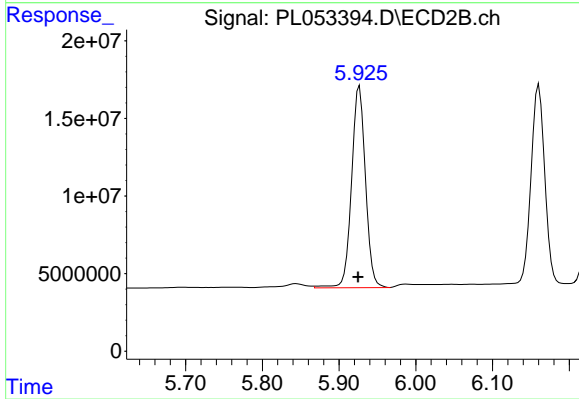
Instrument :
ECD_L
ClientSampled :



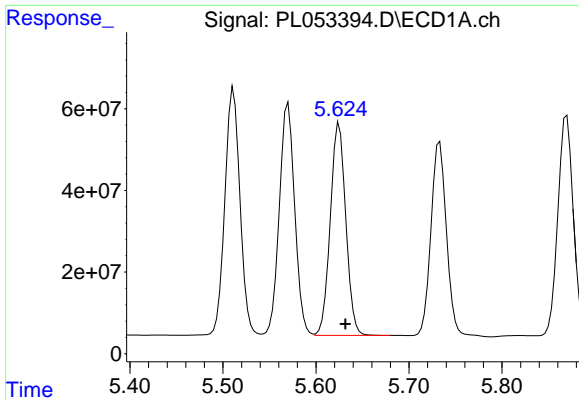
#7 delta-BHC
R.T.: 5.112 min
Delta R.T.: 0.002 min
Response: 176490485
Conc: 48.76 ng/ml



#8 Heptachlor epoxide
R.T.: 5.282 min
Delta R.T.: -0.007 min
Response: 689245271
Conc: 52.89 ng/ml

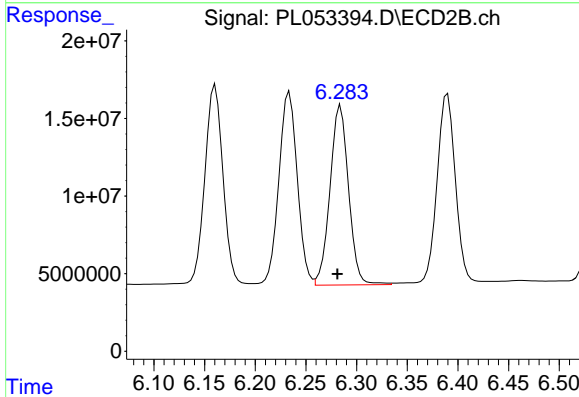


#8 Heptachlor epoxide
R.T.: 5.927 min
Delta R.T.: 0.002 min
Response: 165331423
Conc: 49.33 ng/ml

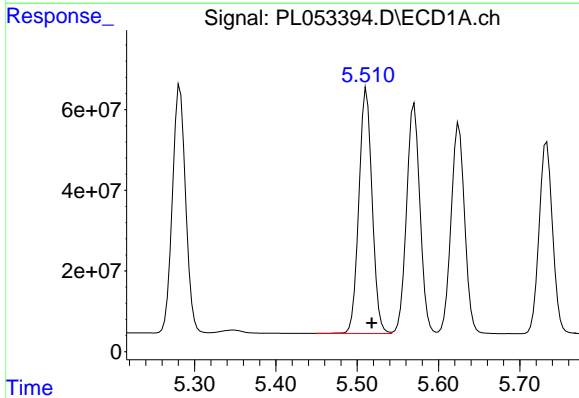


#9 Endosulfan I
 R.T.: 5.625 min
 Delta R.T.: -0.007 min
 Response: 602832300
 Conc: 49.67 ng/ml

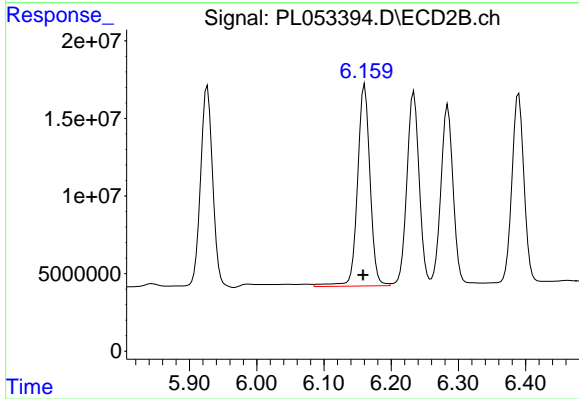
Instrument :
 ECD_L
 ClientSampled :



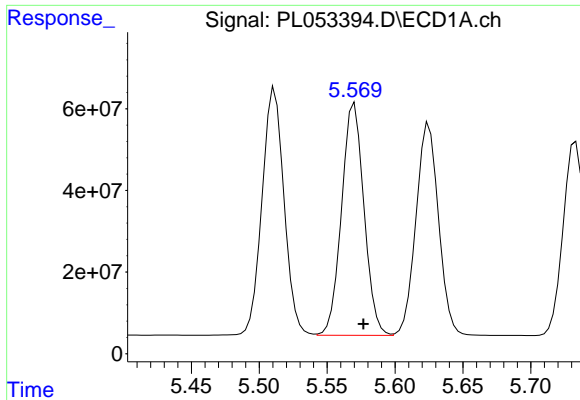
#9 Endosulfan I
 R.T.: 6.284 min
 Delta R.T.: 0.003 min
 Response: 147884849
 Conc: 47.31 ng/ml



#10 gamma-Chlordane
 R.T.: 5.511 min
 Delta R.T.: -0.007 min
 Response: 684151249
 Conc: 50.87 ng/ml



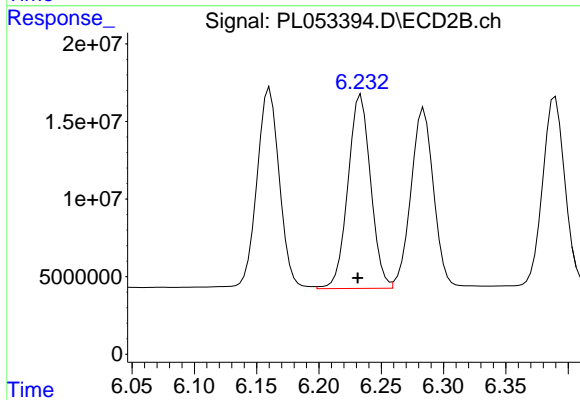
#10 gamma-Chlordane
 R.T.: 6.161 min
 Delta R.T.: 0.002 min
 Response: 168171820
 Conc: 49.71 ng/ml



#11 alpha-Chlordane

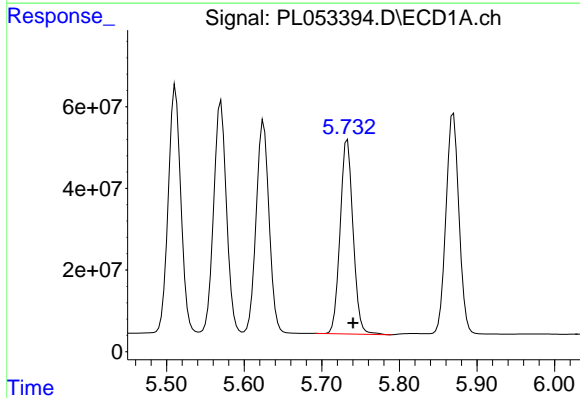
R.T.: 5.570 min
Delta R.T.: -0.006 min
Response: 653994883
Conc: 49.59 ng/ml

Instrument :
ECD_L
ClientSampleId :



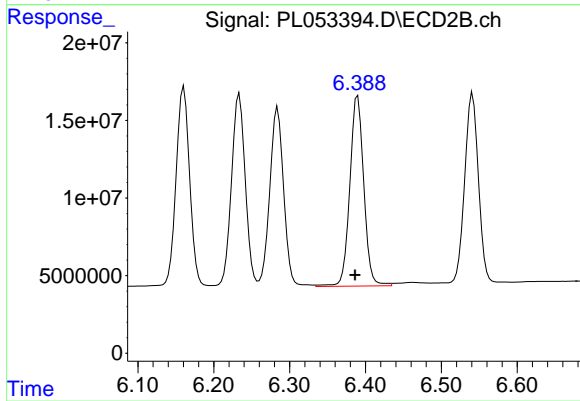
#11 alpha-Chlordane

R.T.: 6.234 min
Delta R.T.: 0.003 min
Response: 158978255
Conc: 47.23 ng/ml



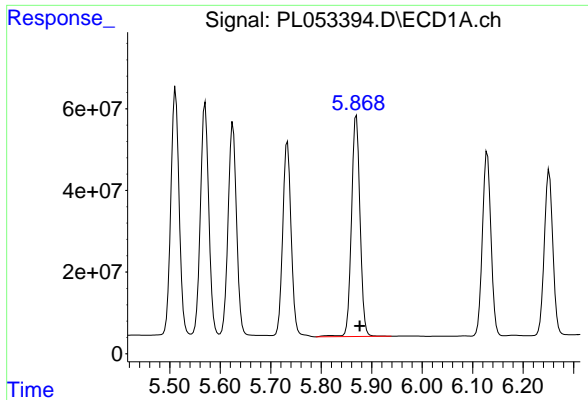
#12 4,4'-DDE

R.T.: 5.733 min
Delta R.T.: -0.007 min
Response: 553487463
Conc: 47.69 ng/ml



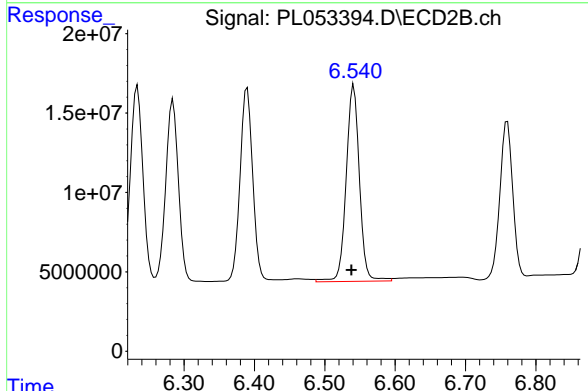
#12 4,4'-DDE

R.T.: 6.390 min
Delta R.T.: 0.003 min
Response: 157261889
Conc: 48.15 ng/ml

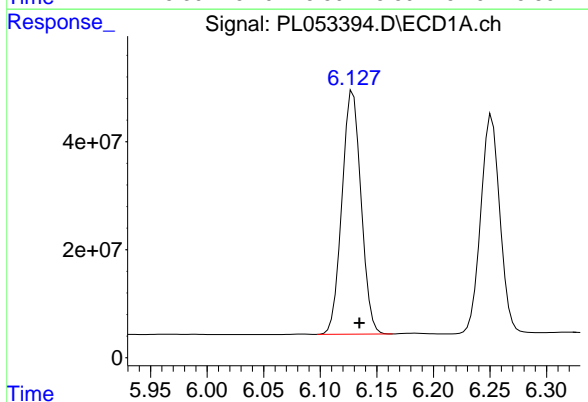


#13 Dieldrin
 R.T.: 5.870 min
 Delta R.T.: -0.007 min
 Response: 639770112
 Conc: 49.56 ng/ml

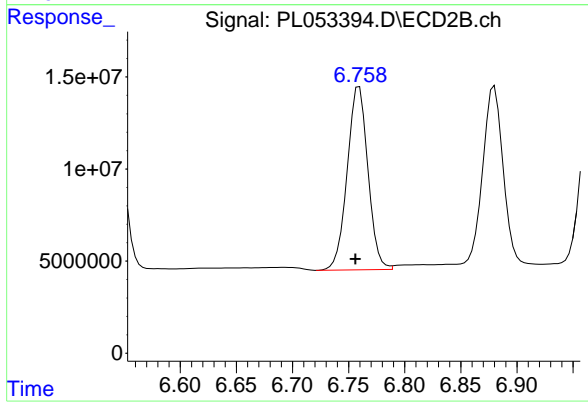
Instrument :
 ECD_L
 ClientSampled :



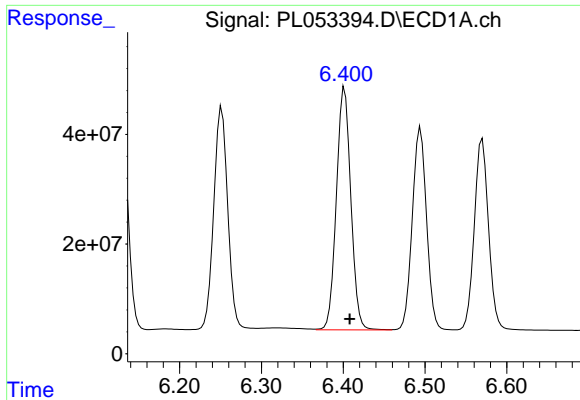
#13 Dieldrin
 R.T.: 6.541 min
 Delta R.T.: 0.003 min
 Response: 162098290
 Conc: 49.69 ng/ml



#14 Endrin
 R.T.: 6.129 min
 Delta R.T.: -0.006 min
 Response: 529339307
 Conc: 46.47 ng/ml



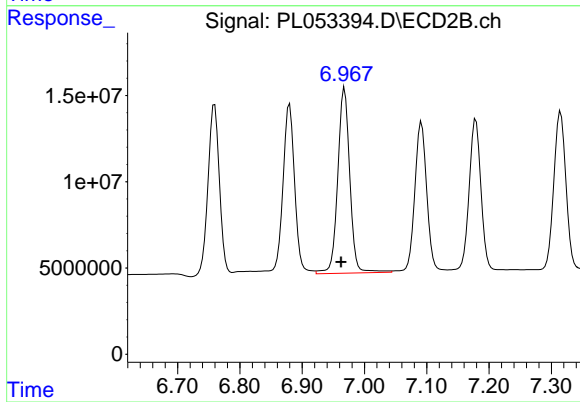
#14 Endrin
 R.T.: 6.759 min
 Delta R.T.: 0.003 min
 Response: 127813496
 Conc: 46.03 ng/ml



#15 Endosulfan II

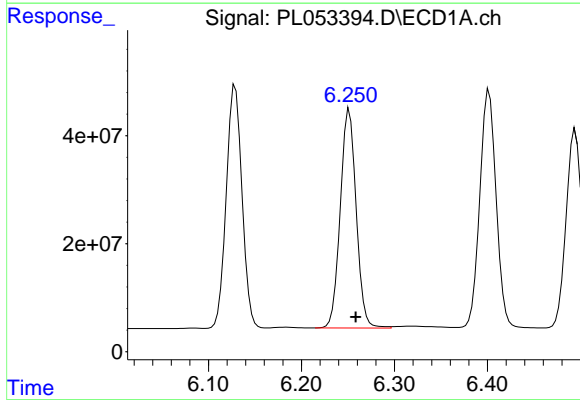
R.T.: 6.402 min
 Delta R.T.: -0.006 min
 Response: 543343578
 Conc: 47.41 ng/ml

Instrument :
 ECD_L
 ClientSampled :



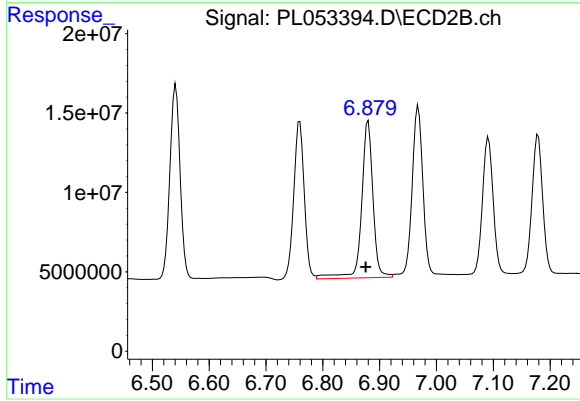
#15 Endosulfan II

R.T.: 6.968 min
 Delta R.T.: 0.006 min
 Response: 144486417
 Conc: 48.70 ng/ml



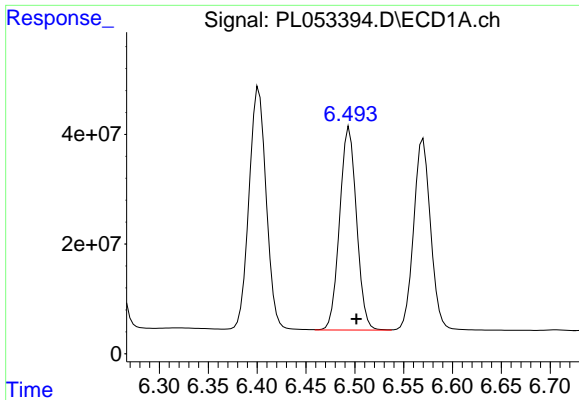
#16 4,4'-DDD

R.T.: 6.252 min
 Delta R.T.: -0.007 min
 Response: 482116025
 Conc: 53.64 ng/ml



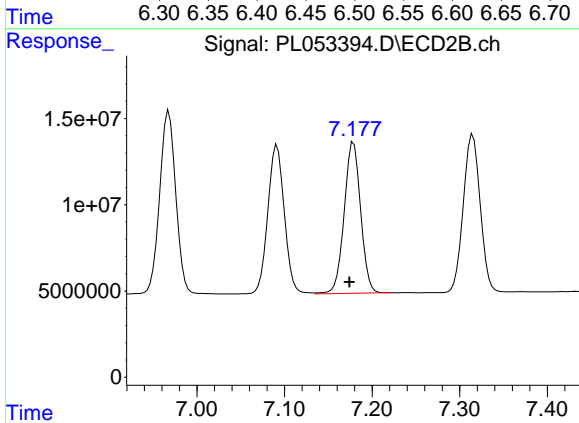
#16 4,4'-DDD

R.T.: 6.880 min
 Delta R.T.: 0.004 min
 Response: 137811087
 Conc: 56.19 ng/ml

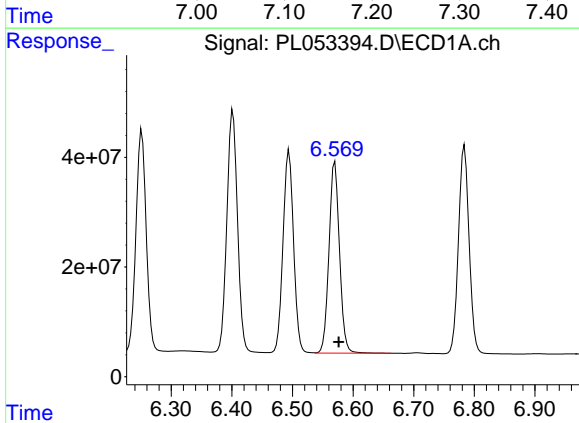


#17 4,4'-DDT
 R.T.: 6.494 min
 Delta R.T.: -0.007 min
 Response: 446012181
 Conc: 43.67 ng/ml

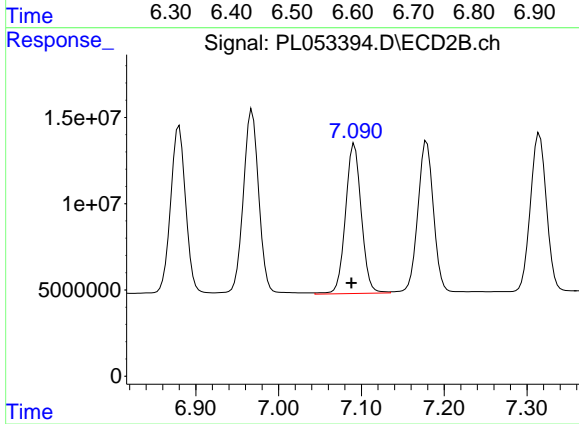
Instrument :
 ECD_L
 ClientSampled :



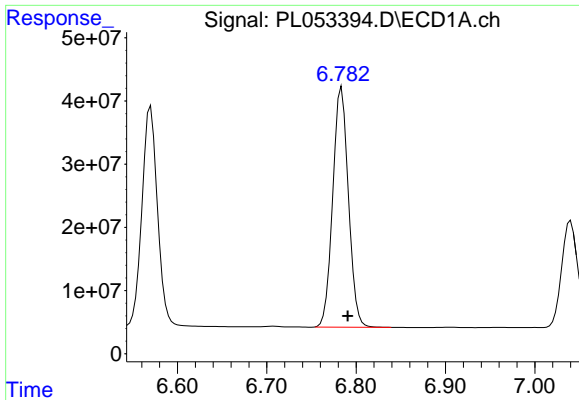
#17 4,4'-DDT
 R.T.: 7.179 min
 Delta R.T.: 0.005 min
 Response: 114806541
 Conc: 44.11 ng/ml



#18 Endrin aldehyde
 R.T.: 6.570 min
 Delta R.T.: -0.006 min
 Response: 421879126
 Conc: 44.92 ng/ml

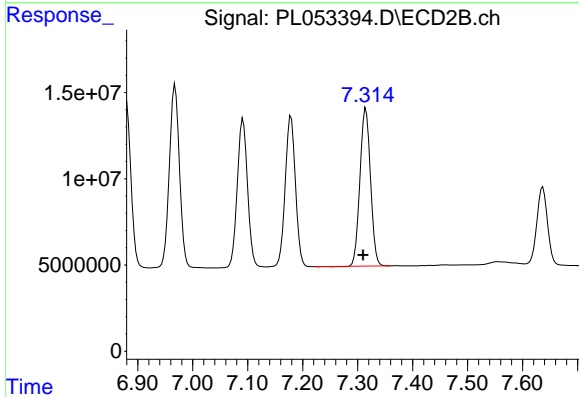


#18 Endrin aldehyde
 R.T.: 7.092 min
 Delta R.T.: 0.004 min
 Response: 115036358
 Conc: 46.90 ng/ml

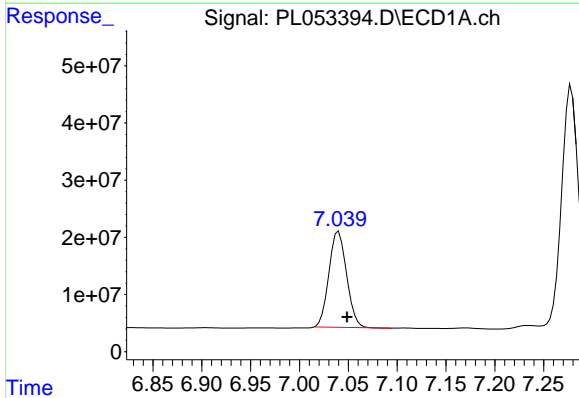


#19 Endosulfan Sulfate
 R.T.: 6.784 min
 Delta R.T.: -0.007 min
 Response: 462029346
 Conc: 44.39 ng/ml

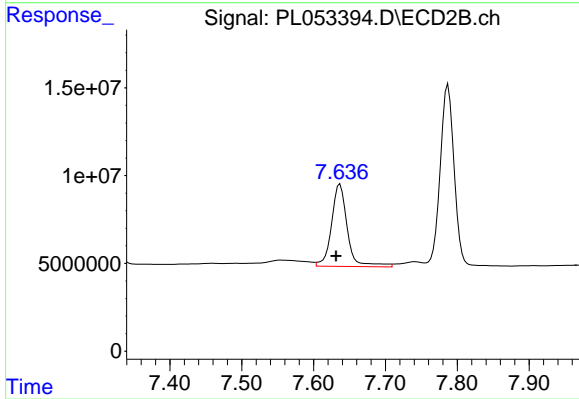
Instrument :
 ECD_L
 ClientSampled :



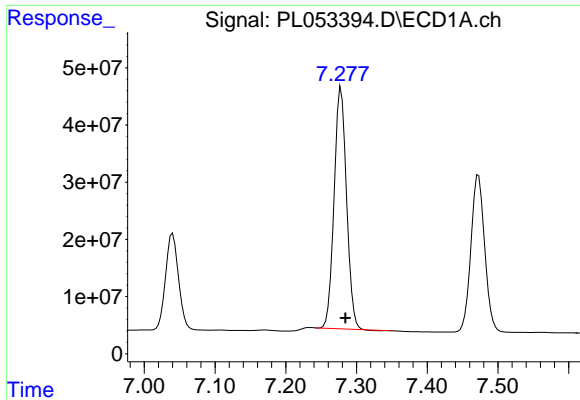
#19 Endosulfan Sulfate
 R.T.: 7.315 min
 Delta R.T.: 0.005 min
 Response: 122038258
 Conc: 44.70 ng/ml



#20 Methoxychlor
 R.T.: 7.040 min
 Delta R.T.: -0.009 min
 Response: 211865089
 Conc: 41.07 ng/ml

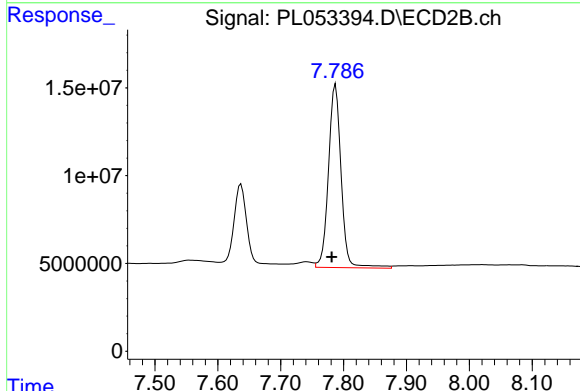


#20 Methoxychlor
 R.T.: 7.637 min
 Delta R.T.: 0.006 min
 Response: 71516141
 Conc: 50.80 ng/ml

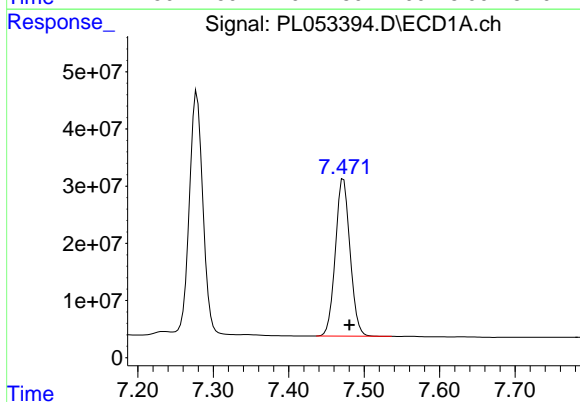


#21 Endrin ketone
 R.T.: 7.278 min
 Delta R.T.: -0.006 min
 Response: 513601550
 Conc: 44.07 ng/ml

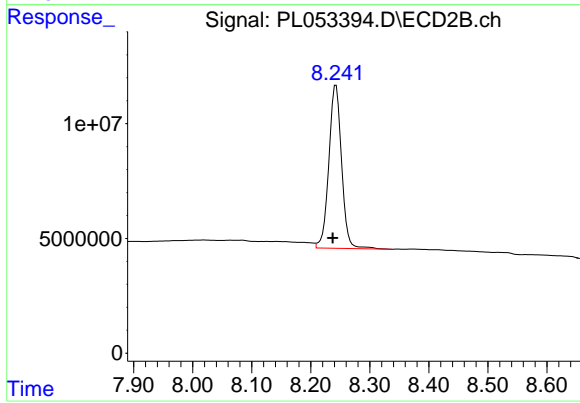
Instrument :
 ECD_L
 ClientSampled :



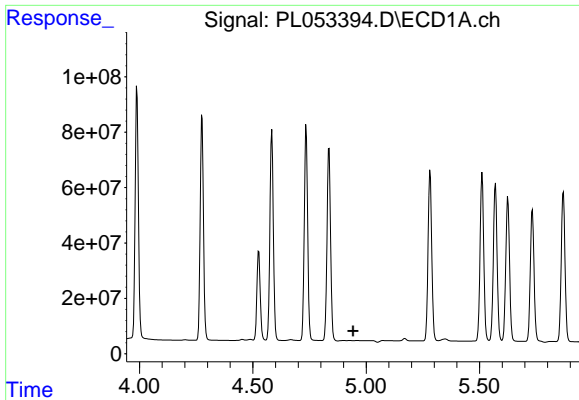
#21 Endrin ketone
 R.T.: 7.787 min
 Delta R.T.: 0.006 min
 Response: 145621196
 Conc: 51.04 ng/ml



#22 Mirex
 R.T.: 7.473 min
 Delta R.T.: -0.008 min
 Response: 371696196
 Conc: 39.36 ng/ml



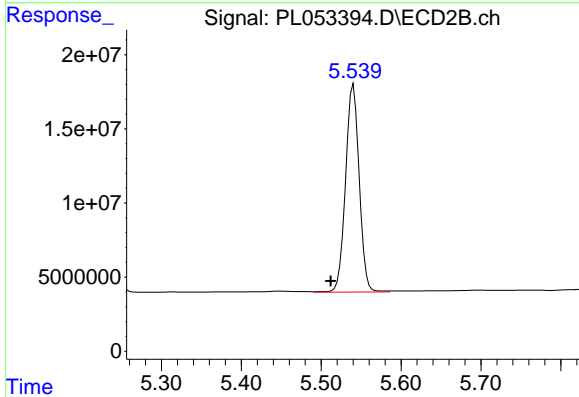
#22 Mirex
 R.T.: 8.243 min
 Delta R.T.: 0.006 min
 Response: 106843096
 Conc: 47.50 ng/ml



#24 Chlordane-2

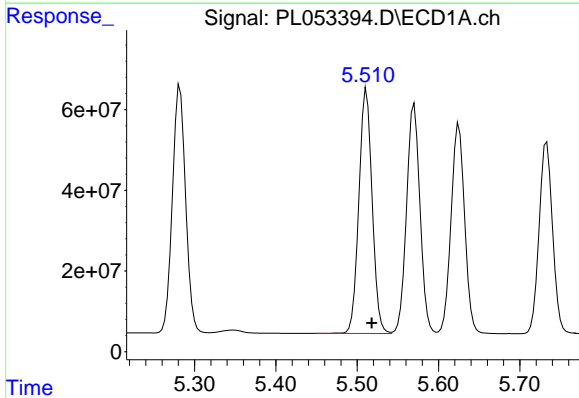
R.T.: 0.000 min
 Exp R.T.: 4.942 min
 Response: 0
 Conc: N.D.

Instrument :
 ECD_L
 ClientSampled :



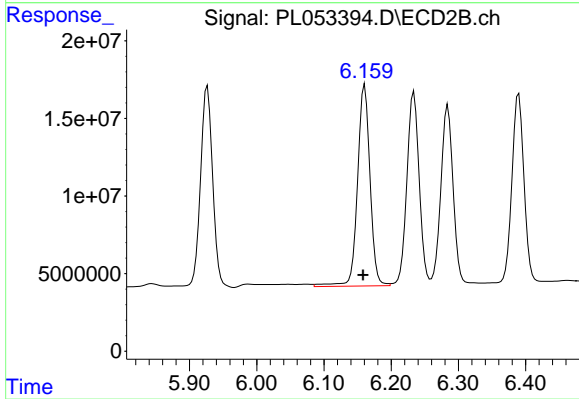
#24 Chlordane-2

R.T.: 5.540 min
 Delta R.T.: 0.028 min
 Response: 166808753
 Conc: 1490.40 ng/ml



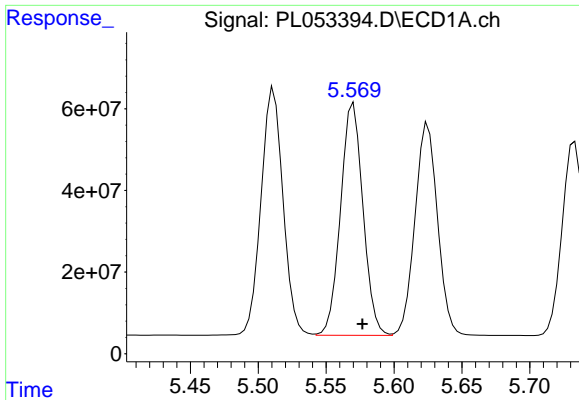
#25 Chlordane-3

R.T.: 5.511 min
 Delta R.T.: -0.006 min
 Response: 684151249
 Conc: 590.45 ng/ml



#25 Chlordane-3

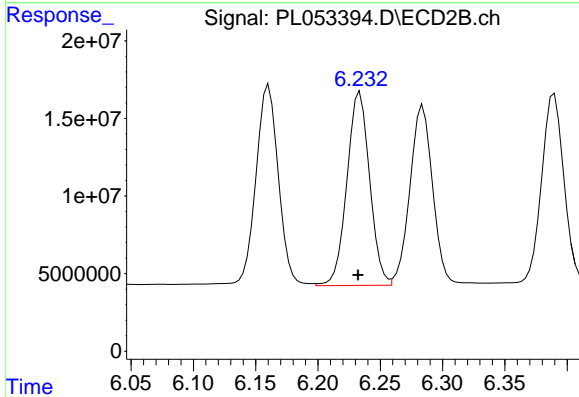
R.T.: 6.161 min
 Delta R.T.: 0.003 min
 Response: 168171820
 Conc: 386.15 ng/ml



#26 Chlordane-4

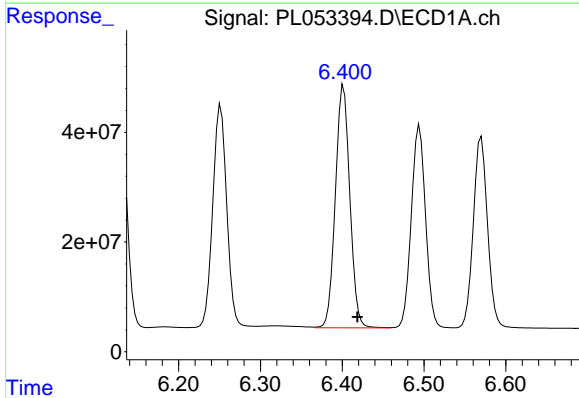
R.T.: 5.570 min
 Delta R.T.: -0.006 min
 Response: 653994883
 Conc: 685.23 ng/ml

Instrument :
 ECD_L
 ClientSampleId :



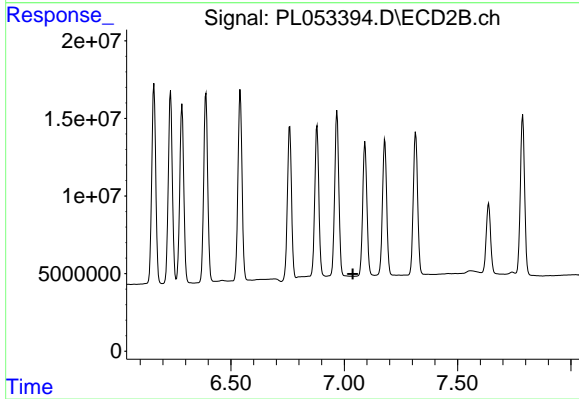
#26 Chlordane-4

R.T.: 6.234 min
 Delta R.T.: 0.001 min
 Response: 158978255
 Conc: 299.40 ng/ml



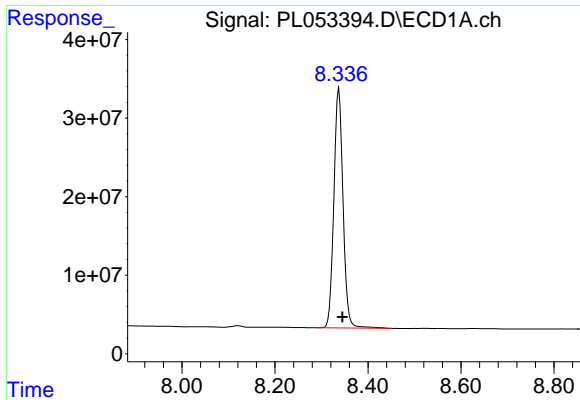
#27 Chlordane-5

R.T.: 6.402 min
 Delta R.T.: -0.017 min
 Response: 543343578
 Conc: 1377.53 ng/ml



#27 Chlordane-5

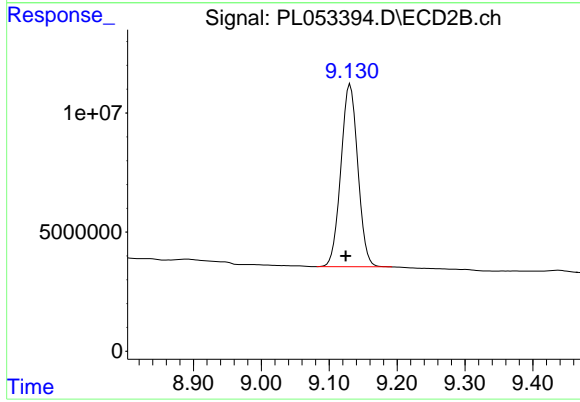
R.T.: 0.000 min
 Exp R.T.: 7.037 min
 Response: 0
 Conc: N.D.



#28 Decachlorobiphenyl

R.T.: 8.338 min
Delta R.T.: -0.007 min
Response: 419396781
Conc: 41.87 ng/ml

Instrument :
ECD_L
ClientSampleId :



#28 Decachlorobiphenyl

R.T.: 9.131 min
Delta R.T.: 0.007 min
Response: 132606781
Conc: 45.20 ng/ml