

Data Path : Z:\pestpcbsrv\HPCHEM1\ECD_L\Data\PL101720\
 Data File : PL062385.D
 Signal(s) : Signal #1: ECD1A.ch Signal #2: ECD2B.ch
 Acq On : 16 Oct 2020 12:29
 Operator : DD\AJ
 Sample : PB132412BS
 Misc :
 ALS Vial : 11 Sample Multiplier: 1

Instrument :
 ECD_L
 ClientSampleId :
 PB132412BS

Integration File signal 1: autoint1.e
 Integration File signal 2: autoint2.e
 Quant Time: Oct 17 05:49:52 2020
 Quant Method : Z:\pestpcbsrv\HPCHEM1\ECD_L\methods\PL101320.M
 Quant Title : GC Extractables
 QLast Update : Tue Oct 13 05:04:40 2020
 Response via : Initial Calibration
 Integrator: ChemStation

Volume Inj. : 1 µl
 Signal #1 Phase : ZB-MR2 Signal #2 Phase: ZB-MR1
 Signal #1 Info : 30M x 0.32mm x0.2 Signal #2 Info : 30M x 0.32mm x0.5µm

	Compound	RT#1	RT#2	Resp#1	Resp#2	ng/ml	ng/ml

System Monitoring Compounds							
1)	SA Tetrachlo...	3.412	3.950	34378366	55202211	19.751	19.587
28)	SA Decachlor...	8.125	8.992	36999738	52838712	20.227	19.251
Target Compounds							
2)	A alpha-BHC	3.844	4.337	130.7E6	223.0E6	51.008	53.173
3)	MA gamma-BHC...	4.123	4.619	117.0E6	206.5E6	51.315	52.551
4)	MA Heptachlor	4.420	5.125	105.0E6	189.8E6	49.854	49.943
5)	MB Aldrin	4.664	5.428	98691423	185.7E6	52.059	52.670
6)	B beta-BHC	4.372	4.791	49423836	84597382	51.390	48.141
7)	B delta-BHC	4.572	5.005	112.0E6	191.5E6	52.510	55.224
8)	B Heptachlo...	5.102	5.815	94320823	171.3E6	51.613	52.713
9)	A Endosulfan I	5.437	6.170	87972260	156.3E6	52.103	51.875
10)	B gamma-Chl...	5.328	6.049	94132368	169.7E6	52.205	51.683
11)	B alpha-Chl...	5.385	6.121	93766819	169.2E6	51.802	51.772
12)	B 4,4'-DDE	5.549	6.280	86207679	160.6E6	52.279	52.797
13)	MA Dieldrin	5.678	6.427	91166467	160.6E6	51.863	51.992
14)	MA Endrin	5.932	6.644	68138997	110.7E6	44.352	44.514
15)	B Endosulfa...	6.204	6.853	85804329	140.2E6	51.967	51.682
16)	A 4,4'-DDD	6.061	6.769	82070191	139.3E6	56.585	57.070
17)	MA 4,4'-DDT	6.300	7.067	59066609	100.0E6	45.789	43.727
18)	B Endrin al...	6.372	6.978	77246111	124.0E6	53.235	52.514
19)	B Endosulfa...	6.584	7.200	85148652	131.4E6	51.513	50.649
20)	A Methoxychlor	6.844	7.527	34822063	53118228	42.792	40.295
21)	B Endrin ke...	7.069	7.670	108.9E6	149.9E6	55.270	53.733
22)	Mirex	7.256	8.123	74263980	99762067	50.044	47.408

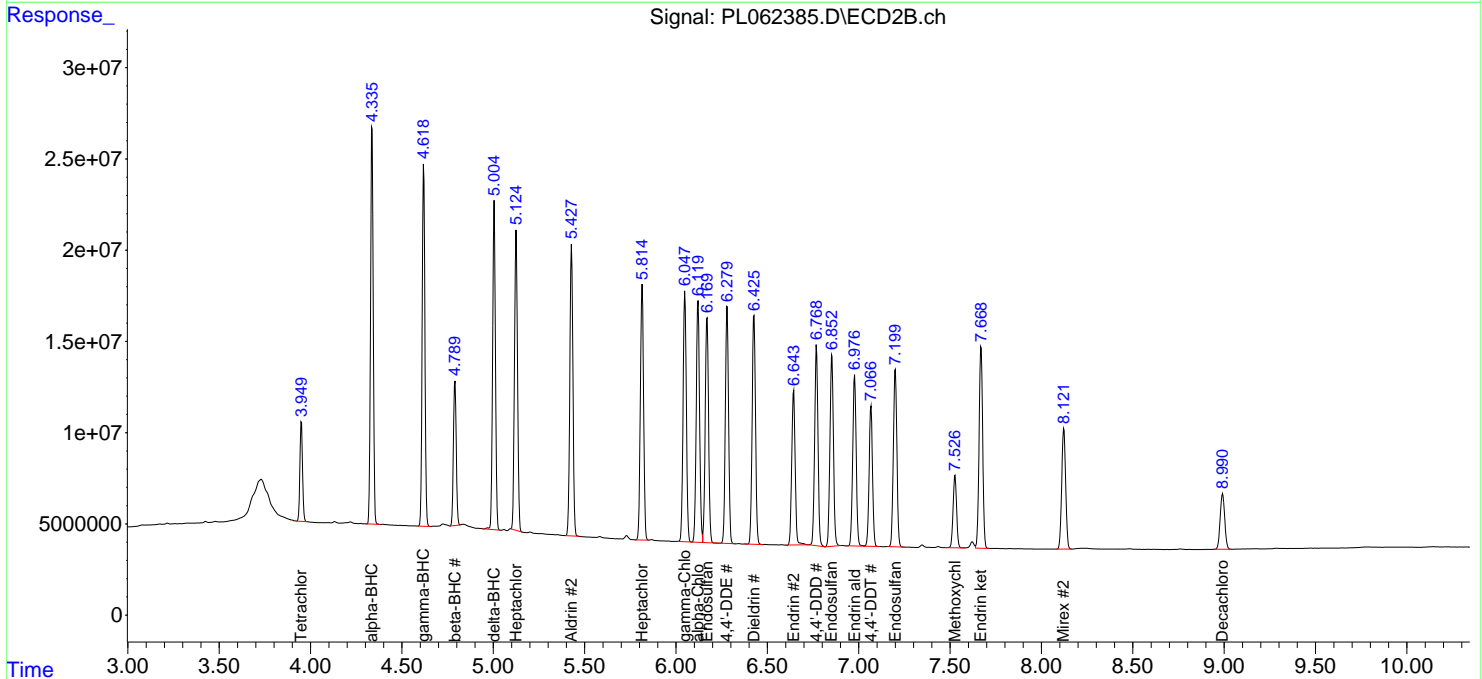
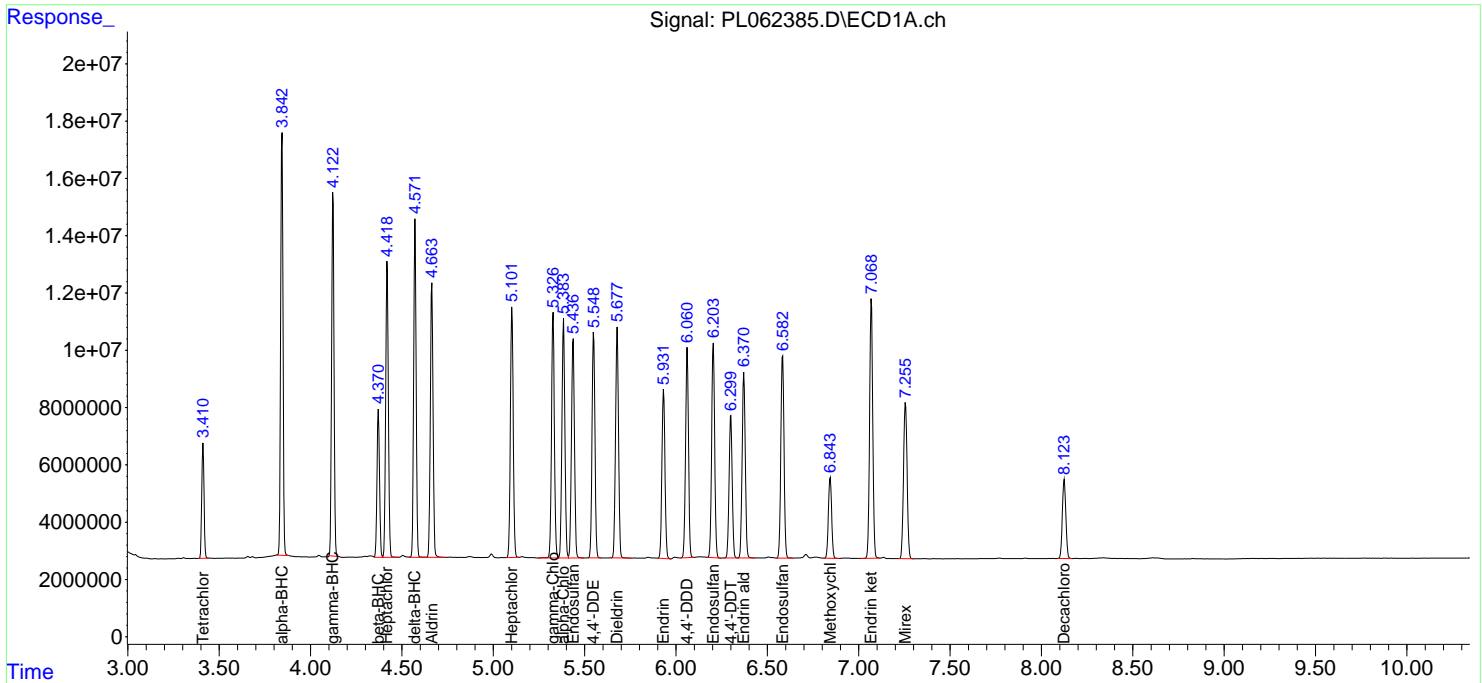
(f)=RT Delta > 1/2 Window (#)=Amounts differ by > 25% (m)=manual int.

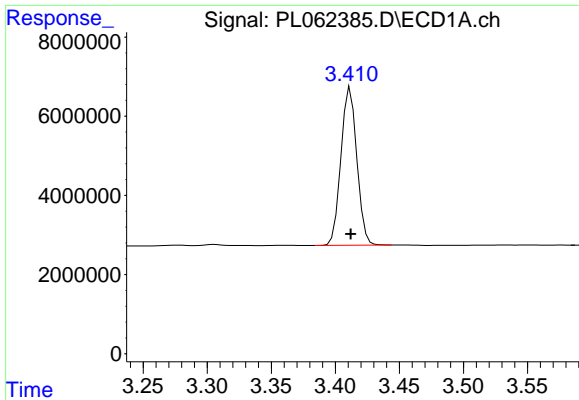
Data Path : Z:\pestpcbsrv\HPCHEM1\ECD_L\Data\PL101720\
 Data File : PL062385.D
 Signal(s) : Signal #1: ECD1A.ch Signal #2: ECD2B.ch
 Acq On : 16 Oct 2020 12:29
 Operator : DD\AJ
 Sample : PB132412BS
 Misc :
 ALS Vial : 11 Sample Multiplier: 1

Instrument :
 ECD_L
 ClientSampled :
 PB132412BS

Integration File signal 1: autoint1.e
 Integration File signal 2: autoint2.e
 Quant Time: Oct 17 05:49:52 2020
 Quant Method : Z:\pestpcbsrv\HPCHEM1\ECD_L\methods\PL101320.M
 Quant Title : GC Extractables
 QLast Update : Tue Oct 13 05:04:40 2020
 Response via : Initial Calibration
 Integrator: ChemStation

Volume Inj. : 1 µl
 Signal #1 Phase : ZB-MR2 Signal #2 Phase: ZB-MR1
 Signal #1 Info : 30M x 0.32mm x0.2 Signal #2 Info : 30M x 0.32mm x0.5µm

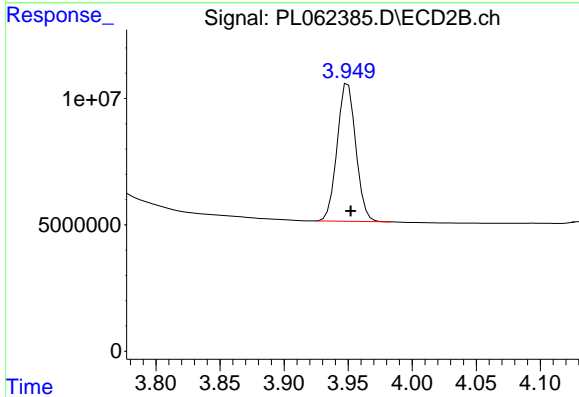




#1 Tetrachloro-m-xylene

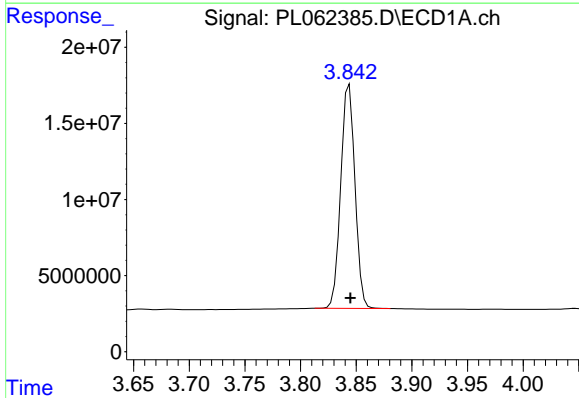
R.T.: 3.412 min
 Delta R.T.: 0.000 min
 Response: 34378366
 Conc: 19.75 ng/ml

Instrument :
 ECD_L
 ClientSampleId :
 PB132412BS



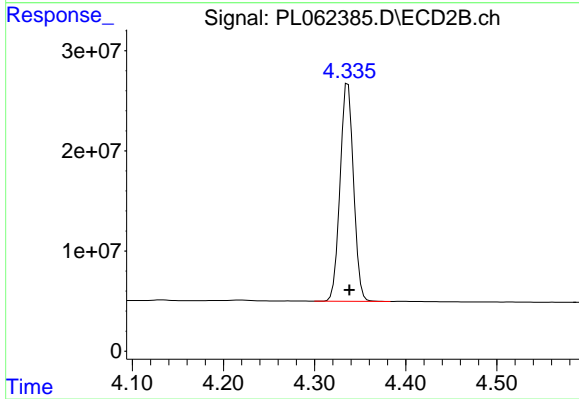
#1 Tetrachloro-m-xylene

R.T.: 3.950 min
 Delta R.T.: -0.002 min
 Response: 55202211
 Conc: 19.59 ng/ml



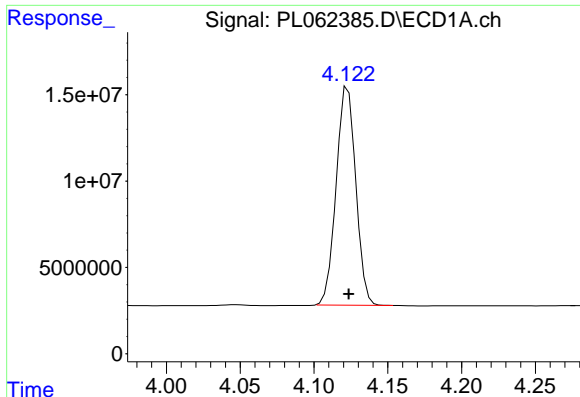
#2 alpha-BHC

R.T.: 3.844 min
 Delta R.T.: 0.000 min
 Response: 130726998
 Conc: 51.01 ng/ml



#2 alpha-BHC

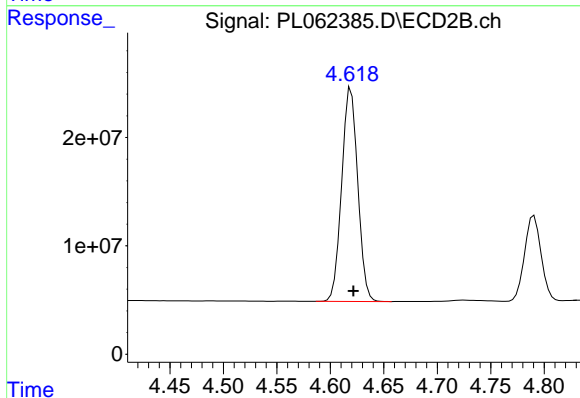
R.T.: 4.337 min
 Delta R.T.: -0.002 min
 Response: 222977623
 Conc: 53.17 ng/ml



#3 gamma-BHC (Lindane)

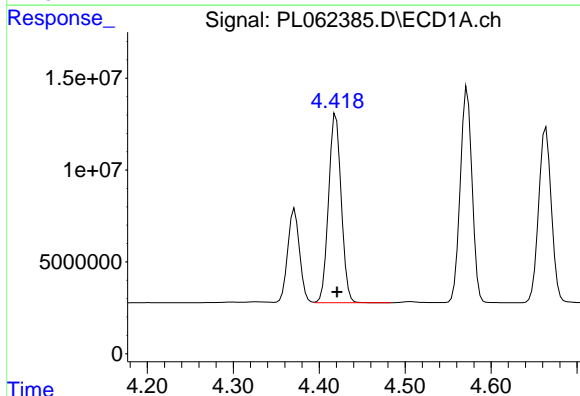
R.T.: 4.123 min
 Delta R.T.: 0.000 min
 Response: 117013261
 Conc: 51.32 ng/ml

Instrument :
 ECD_L
 ClientSampleId :
 PB132412BS



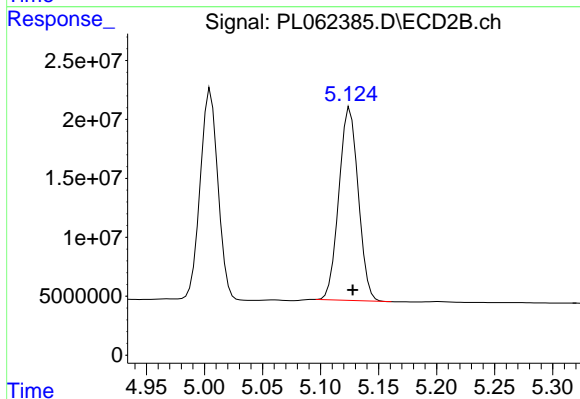
#3 gamma-BHC (Lindane)

R.T.: 4.619 min
 Delta R.T.: -0.002 min
 Response: 206503861
 Conc: 52.55 ng/ml



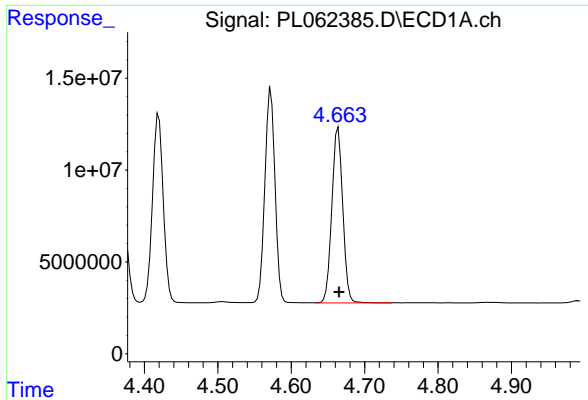
#4 Heptachlor

R.T.: 4.420 min
 Delta R.T.: -0.001 min
 Response: 104968777
 Conc: 49.85 ng/ml



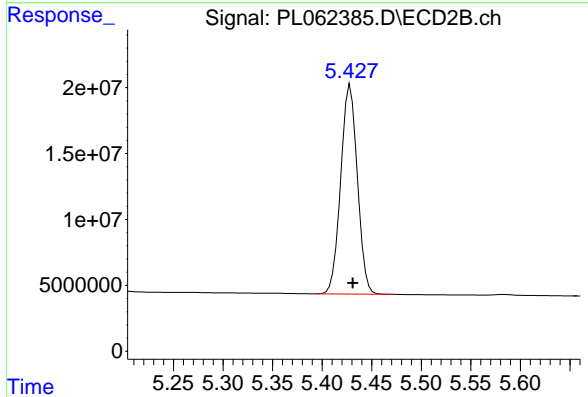
#4 Heptachlor

R.T.: 5.125 min
 Delta R.T.: -0.002 min
 Response: 189828323
 Conc: 49.94 ng/ml

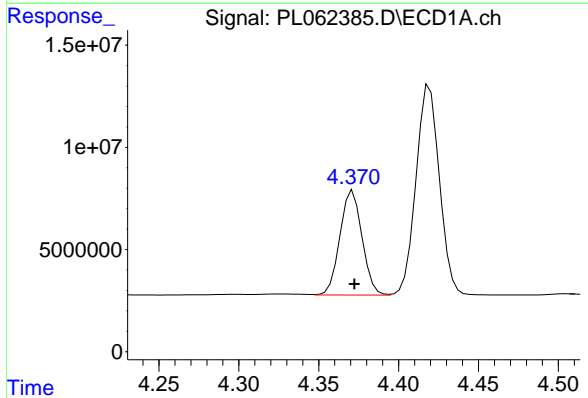


#5 Aldrin
 R.T.: 4.664 min
 Delta R.T.: -0.001 min
 Response: 98691423
 Conc: 52.06 ng/ml

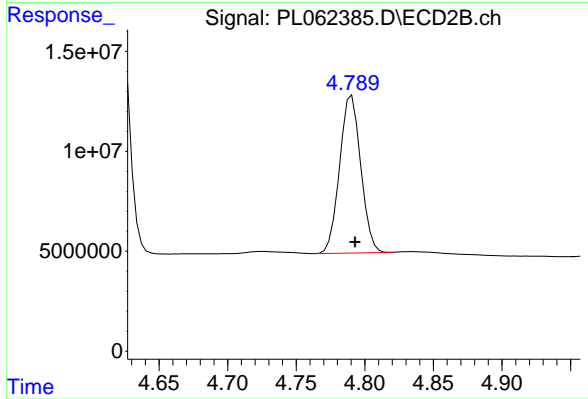
Instrument :
 ECD_L
 ClientSampleId :
 PB132412BS



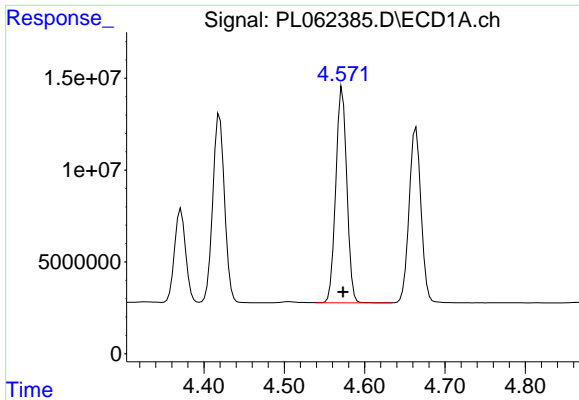
#5 Aldrin
 R.T.: 5.428 min
 Delta R.T.: -0.002 min
 Response: 185684296
 Conc: 52.67 ng/ml



#6 beta-BHC
 R.T.: 4.372 min
 Delta R.T.: 0.000 min
 Response: 49423836
 Conc: 51.39 ng/ml



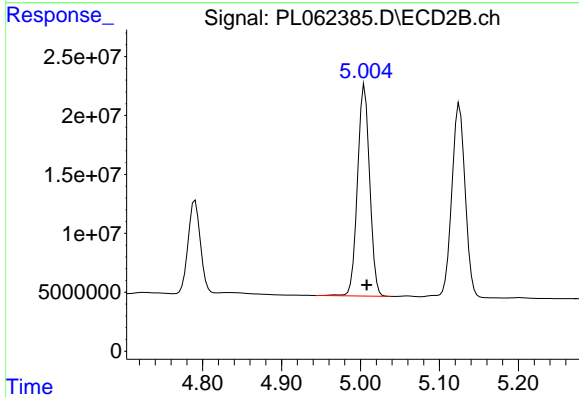
#6 beta-BHC
 R.T.: 4.791 min
 Delta R.T.: -0.002 min
 Response: 84597382
 Conc: 48.14 ng/ml



#7 delta-BHC

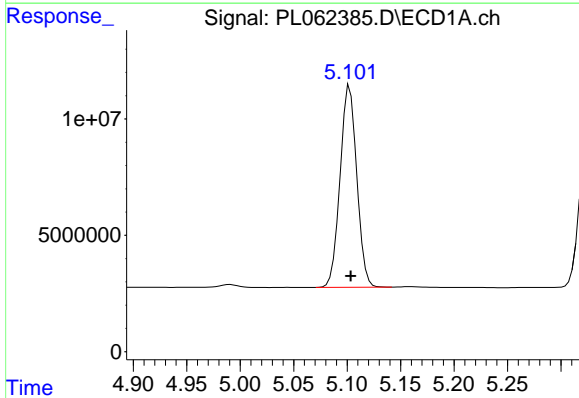
R.T.: 4.572 min
 Delta R.T.: 0.000 min
 Response: 112036832
 Conc: 52.51 ng/ml

Instrument :
 ECD_L
 ClientSampled :
 PB132412BS



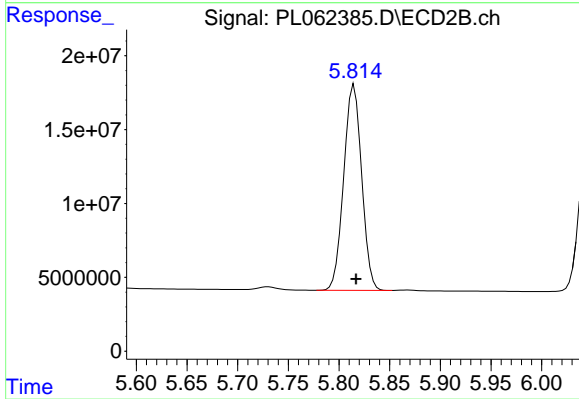
#7 delta-BHC

R.T.: 5.005 min
 Delta R.T.: -0.002 min
 Response: 191512819
 Conc: 55.22 ng/ml



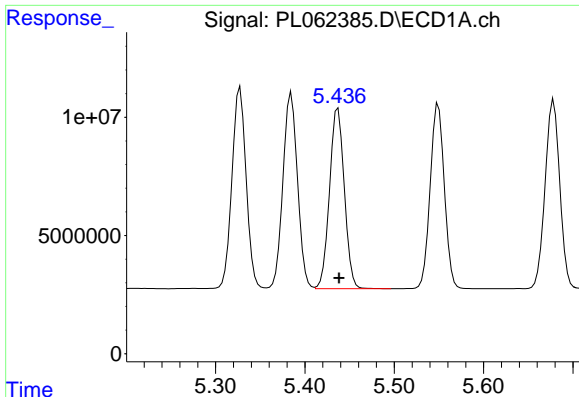
#8 Heptachlor epoxide

R.T.: 5.102 min
 Delta R.T.: -0.001 min
 Response: 94320823
 Conc: 51.61 ng/ml



#8 Heptachlor epoxide

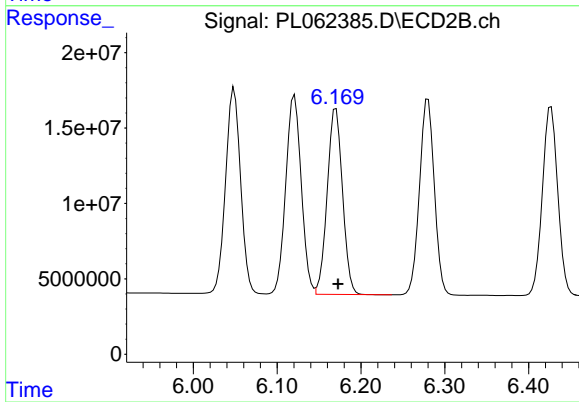
R.T.: 5.815 min
 Delta R.T.: -0.002 min
 Response: 171345739
 Conc: 52.71 ng/ml



#9 Endosulfan I

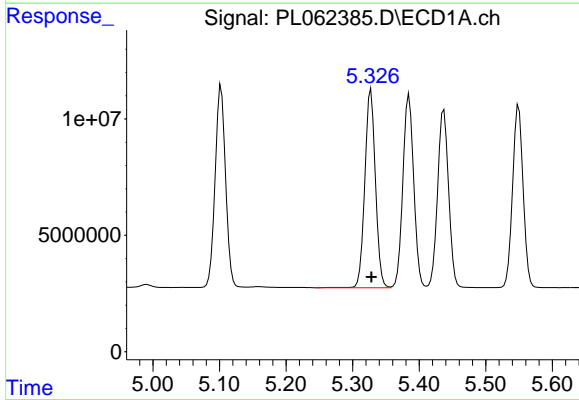
R.T.: 5.437 min
 Delta R.T.: 0.000 min
 Response: 87972260
 Conc: 52.10 ng/ml

Instrument :
 ECD_L
 ClientSampleId :
 PB132412BS



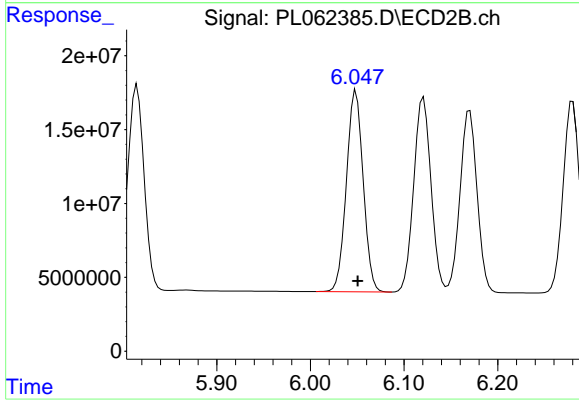
#9 Endosulfan I

R.T.: 6.170 min
 Delta R.T.: -0.002 min
 Response: 156260275
 Conc: 51.88 ng/ml



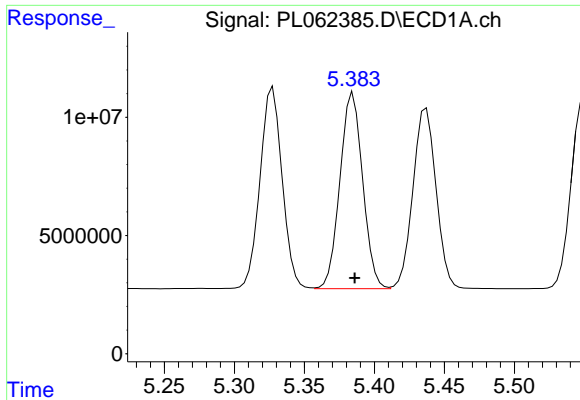
#10 gamma-Chlordane

R.T.: 5.328 min
 Delta R.T.: 0.000 min
 Response: 94132368
 Conc: 52.21 ng/ml



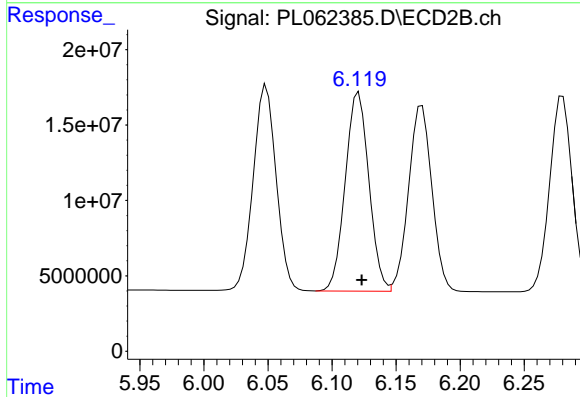
#10 gamma-Chlordane

R.T.: 6.049 min
 Delta R.T.: -0.002 min
 Response: 169733879
 Conc: 51.68 ng/ml

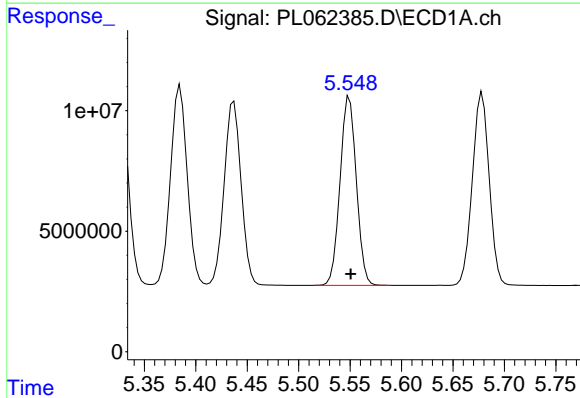


#11 alpha-Chlordane
 R.T.: 5.385 min
 Delta R.T.: -0.001 min
 Response: 93766819
 Conc: 51.80 ng/ml

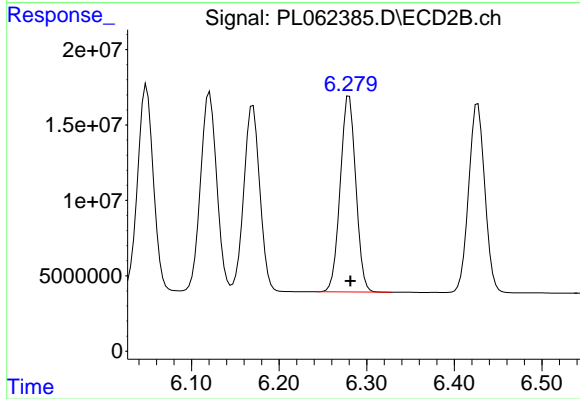
Instrument :
 ECD_L
 ClientSampleId :
 PB132412BS



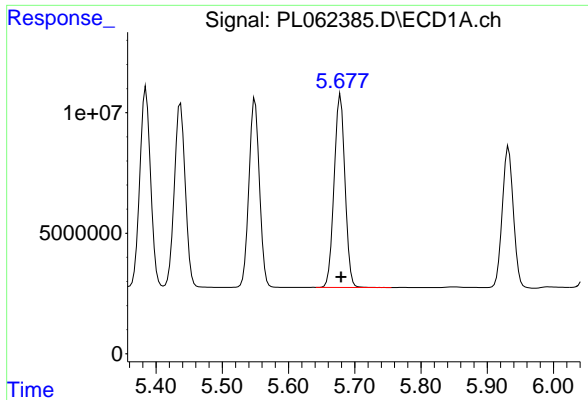
#11 alpha-Chlordane
 R.T.: 6.121 min
 Delta R.T.: -0.002 min
 Response: 169194256
 Conc: 51.77 ng/ml



#12 4,4'-DDE
 R.T.: 5.549 min
 Delta R.T.: -0.001 min
 Response: 86207679
 Conc: 52.28 ng/ml

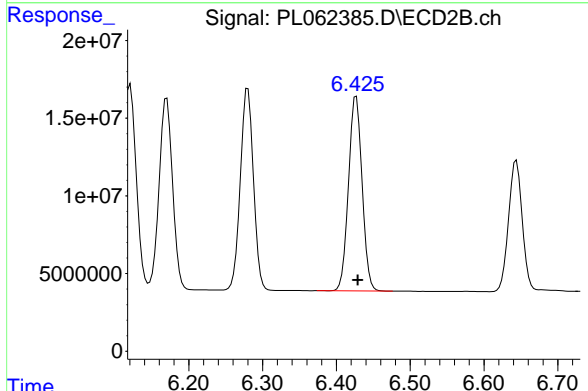


#12 4,4'-DDE
 R.T.: 6.280 min
 Delta R.T.: -0.001 min
 Response: 160645679
 Conc: 52.80 ng/ml

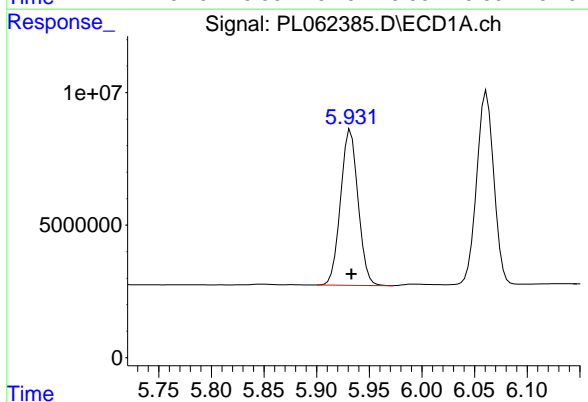


#13 Dieldrin
 R.T.: 5.678 min
 Delta R.T.: 0.000 min
 Response: 91166467
 Conc: 51.86 ng/ml

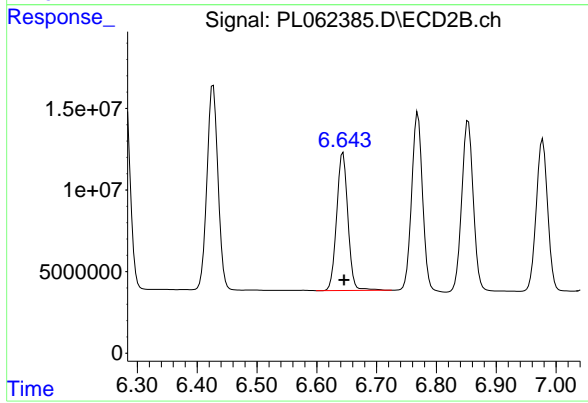
Instrument :
 ECD_L
 ClientSampled :
 PB132412BS



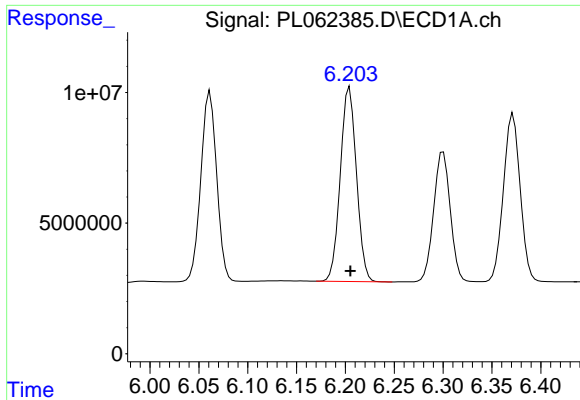
#13 Dieldrin
 R.T.: 6.427 min
 Delta R.T.: -0.002 min
 Response: 160552925
 Conc: 51.99 ng/ml



#14 Endrin
 R.T.: 5.932 min
 Delta R.T.: 0.000 min
 Response: 68138997
 Conc: 44.35 ng/ml



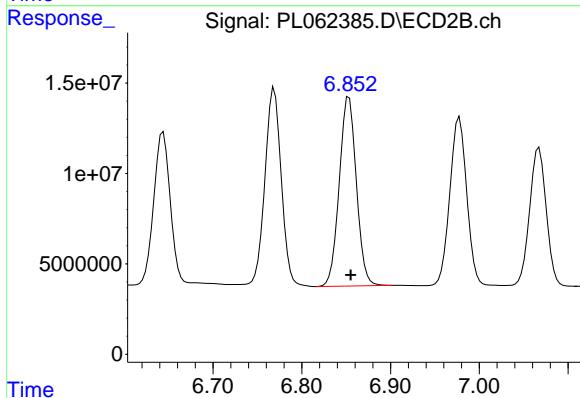
#14 Endrin
 R.T.: 6.644 min
 Delta R.T.: -0.002 min
 Response: 110708227
 Conc: 44.51 ng/ml



#15 Endosulfan II

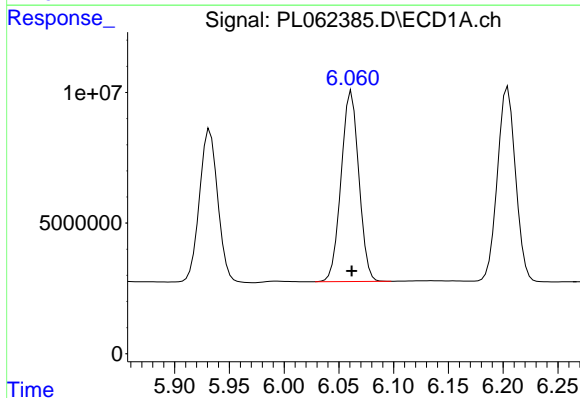
R.T.: 6.204 min
Delta R.T.: 0.000 min
Response: 85804329
Conc: 51.97 ng/ml

Instrument :
ECD_L
ClientSampleId :
PB132412BS



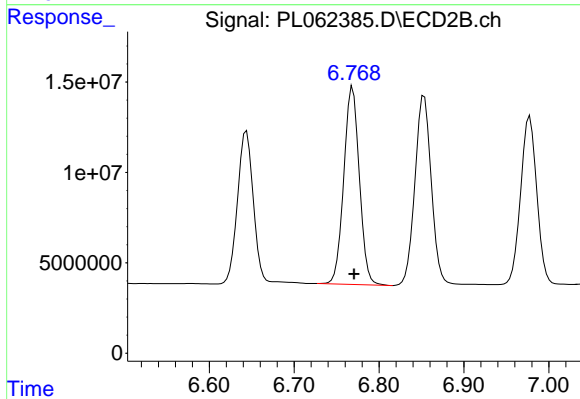
#15 Endosulfan II

R.T.: 6.853 min
Delta R.T.: -0.002 min
Response: 140244345
Conc: 51.68 ng/ml



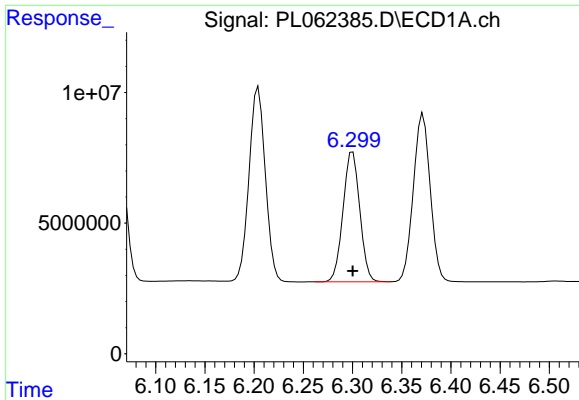
#16 4,4'-DDD

R.T.: 6.061 min
Delta R.T.: 0.000 min
Response: 82070191
Conc: 56.58 ng/ml



#16 4,4'-DDD

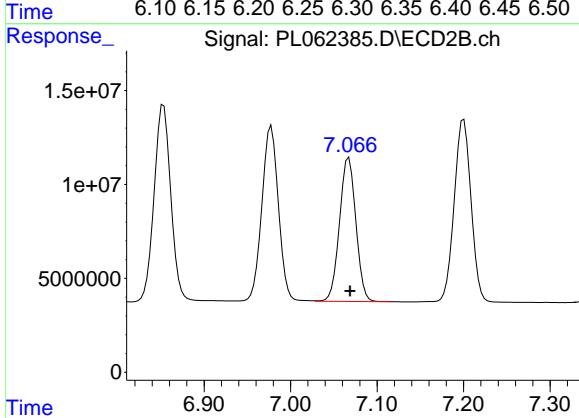
R.T.: 6.769 min
Delta R.T.: -0.002 min
Response: 139281748
Conc: 57.07 ng/ml



#17 4,4'-DDT

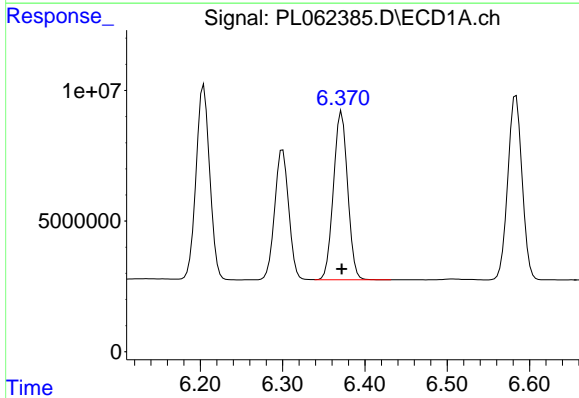
R.T.: 6.300 min
Delta R.T.: 0.000 min
Response: 59066609
Conc: 45.79 ng/ml

Instrument :
ECD_L
ClientSampled :
PB132412BS



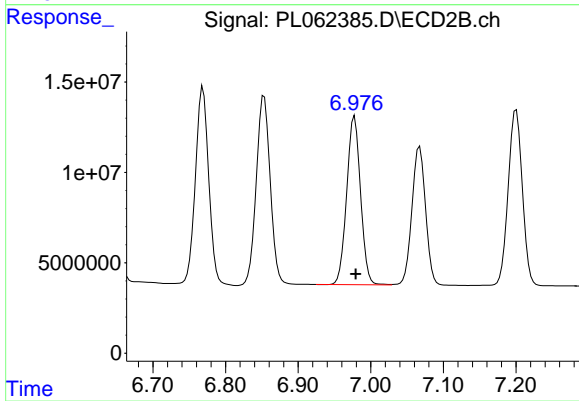
#17 4,4'-DDT

R.T.: 7.067 min
Delta R.T.: -0.001 min
Response: 100019860
Conc: 43.73 ng/ml



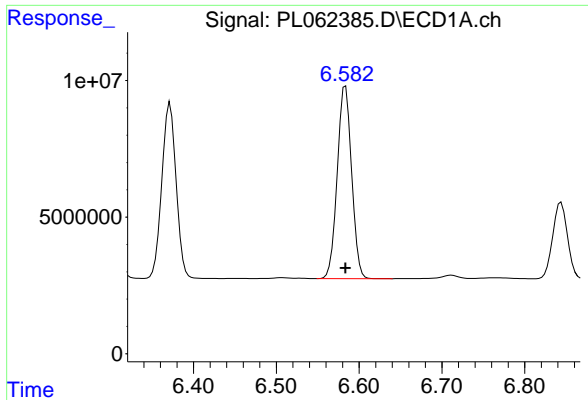
#18 Endrin aldehyde

R.T.: 6.372 min
Delta R.T.: 0.000 min
Response: 77246111
Conc: 53.23 ng/ml



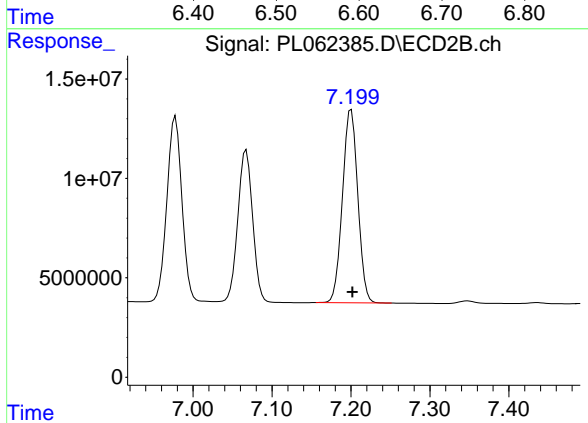
#18 Endrin aldehyde

R.T.: 6.978 min
Delta R.T.: -0.001 min
Response: 124047685
Conc: 52.51 ng/ml

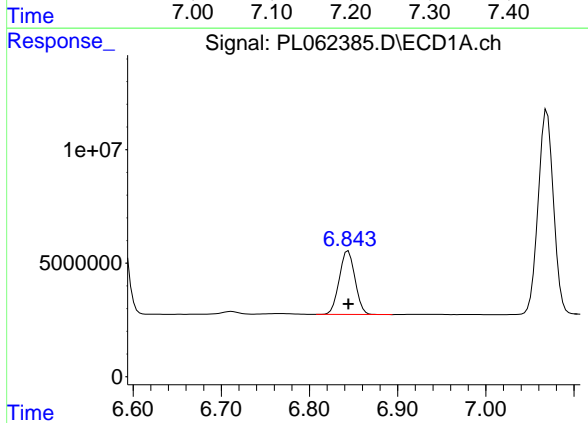


#19 Endosulfan Sulfate
 R.T.: 6.584 min
 Delta R.T.: 0.000 min
 Response: 85148652
 Conc: 51.51 ng/ml

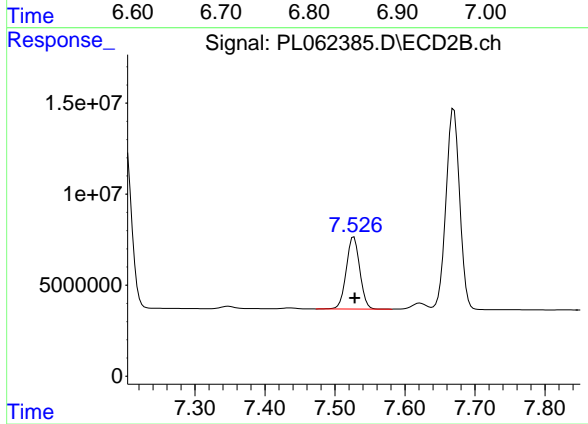
Instrument :
 ECD_L
 ClientSampleId :
 PB132412BS



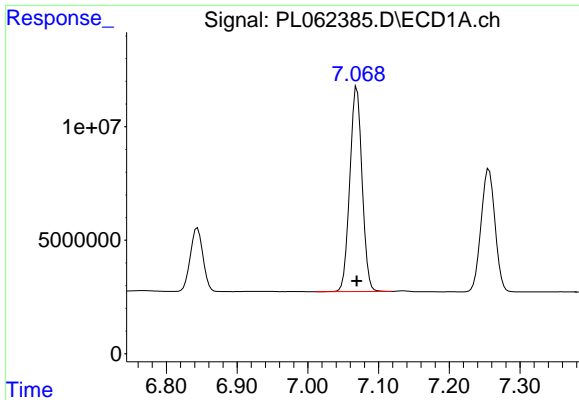
#19 Endosulfan Sulfate
 R.T.: 7.200 min
 Delta R.T.: -0.002 min
 Response: 131427257
 Conc: 50.65 ng/ml



#20 Methoxychlor
 R.T.: 6.844 min
 Delta R.T.: 0.000 min
 Response: 34822063
 Conc: 42.79 ng/ml



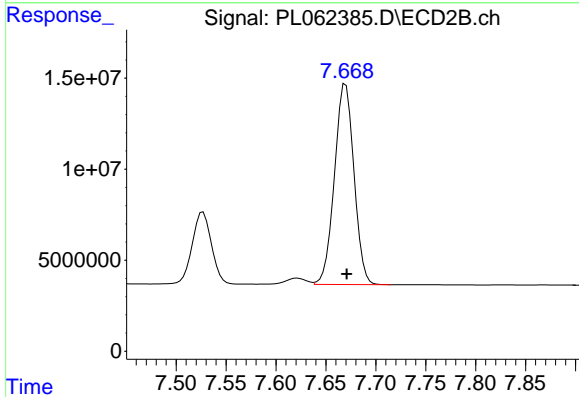
#20 Methoxychlor
 R.T.: 7.527 min
 Delta R.T.: -0.001 min
 Response: 53118228
 Conc: 40.30 ng/ml



#21 Endrin ketone

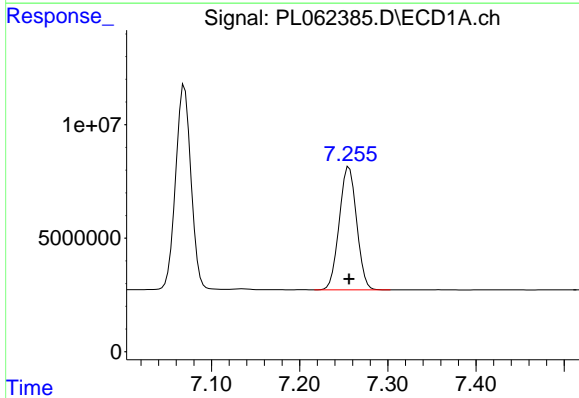
R.T.: 7.069 min
 Delta R.T.: 0.000 min
 Response: 108898080
 Conc: 55.27 ng/ml

Instrument :
 ECD_L
 ClientSampleId :
 PB132412BS



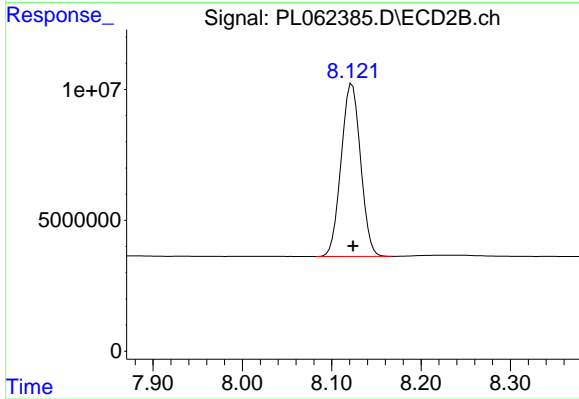
#21 Endrin ketone

R.T.: 7.670 min
 Delta R.T.: 0.000 min
 Response: 149870390
 Conc: 53.73 ng/ml



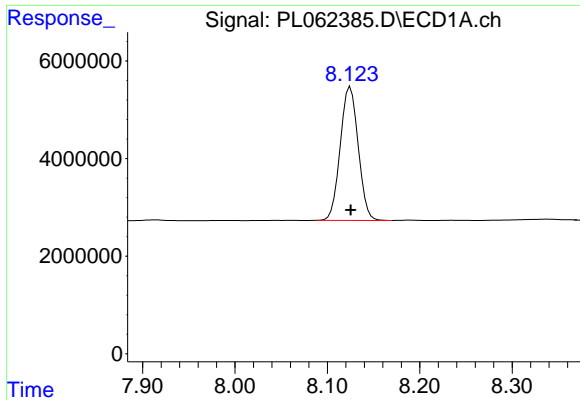
#22 Mirex

R.T.: 7.256 min
 Delta R.T.: 0.000 min
 Response: 74263980
 Conc: 50.04 ng/ml



#22 Mirex

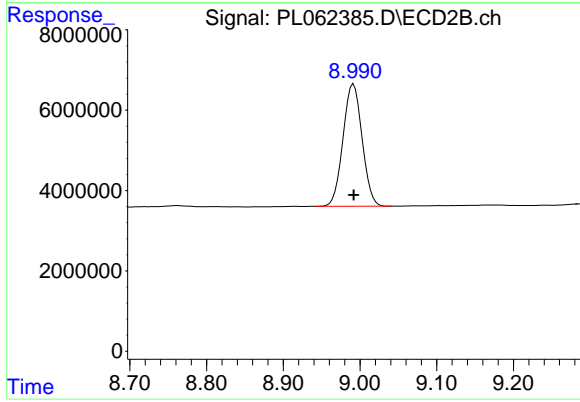
R.T.: 8.123 min
 Delta R.T.: -0.001 min
 Response: 99762067
 Conc: 47.41 ng/ml



#28 Decachlorobiphenyl

R.T.: 8.125 min
Delta R.T.: 0.000 min
Response: 36999738
Conc: 20.23 ng/ml

Instrument :
ECD_L
ClientSampleId :
PB132412BS



#28 Decachlorobiphenyl

R.T.: 8.992 min
Delta R.T.: 0.000 min
Response: 52838712
Conc: 19.25 ng/ml