

Data Path : Z:\pestpcbsrv\HPCHEM1\ECD\_L\Data\PL101722\  
 Data File : PL078392.D  
 Signal(s) : Signal #1: ECD1A.ch Signal #2: ECD2B.ch  
 Acq On : 17 Oct 2022 12:07  
 Operator : AR\AJ  
 Sample : PB148346BS  
 Misc :  
 ALS Vial : 5 Sample Multiplier: 1

Instrument :  
 ECD\_L  
 ClientSampleId :

Integration File signal 1: autoint1.e  
 Integration File signal 2: autoint2.e  
 Quant Time: Oct 17 23:50:30 2022  
 Quant Method : Z:\pestpcbsrv\HPCHEM1\ECD\_L\methods\PL101222.M  
 Quant Title : GC Extractables  
 QLast Update : Wed Oct 12 15:30:54 2022  
 Response via : Initial Calibration  
 Integrator: ChemStation

Volume Inj. : 1 µl  
 Signal #1 Phase : ZB-MR2 Signal #2 Phase: ZB-MR1  
 Signal #1 Info : 30M x 0.32mm x0.2 Signal #2 Info : 30M x 0.32mm x0.5µm

	Compound	RT#1	RT#2	Resp#1	Resp#2	ng/ml	ng/ml
-----							
System Monitoring Compounds							
1)	SA Tetrachlo...	3.418	2.618	22620740	39595283	13.688	14.980
28)	SA Decachlor...	8.911	7.718	24413385	33411853	15.814	15.370
Target Compounds							
2)	A alpha-BHC	3.883	3.111	22048720	35602856	8.768	8.554
3)	MA gamma-BHC...	4.219	3.435	21215557	31800941	9.098	9.126
4)	MA Heptachlor	4.795	3.765	23566482	35078715	10.602	9.822
5)	MB Aldrin	5.135	4.040	16315721	32168962	7.790	9.456
6)	B beta-BHC	4.433	3.736	9531310	14333464	9.583	9.722
7)	B delta-BHC	4.676	3.958	21968015	34421085	11.953	9.312
8)	B Heptachlo...	5.569	4.540	20542949	32470862	13.493	11.020
9)	A Endosulfan I	5.955	4.905	18169388	30923206	10.823	11.212
10)	B gamma-Chl...	5.824	4.789	19739003	33274150	11.078	11.116
11)	B alpha-Chl...	5.902	4.851	19645492	32525654	10.971	11.295
12)	B 4,4'-DDE	6.082	5.046	19024840	30379091	11.288	10.627
13)	MA Dieldrin	6.233	5.169	17925529	27166470	10.419	9.271
14)	MA Endrin	6.465	5.442	12178669	38064696	8.162	16.526 #
15)	B Endosulfa...	6.693	5.738	14717462	25649444	10.978	10.478
16)	A 4,4'-DDD	6.607	5.599	13374741	25859024	10.862	11.609
17)	MA 4,4'-DDT	6.917	5.848	15487406	26109816	10.579	11.503
18)	B Endrin al...	6.824	5.919	12548011	27238819	10.965	14.721 #
19)	B Endosulfa...	7.057	6.141	15275209	33845926	10.709	14.060 #
20)	A Methoxychlor	7.399	6.426	7784514	13842342	10.274	10.960
21)	B Endrin ke...	7.546	6.640	17491445	27654347	11.212	10.438
22)	Mirex	8.005	6.816	11399394	27456588	9.651	14.272 #
23)	Chlordane-1	0.000	3.617f	0	205617	N.D.	2.145 #
24)	Chlordane-2	5.135f	0.000	16315721	0	231.647	N.D. #
25)	Chlordane-3	5.824	4.789	19739003	33274150	75.925	108.754 #
26)	Chlordane-4	5.902	4.851	19645492	32525654	61.513	100.725 #
27)	Chlordane-5	0.000	5.533f	0	1514479	N.D.	17.748 #

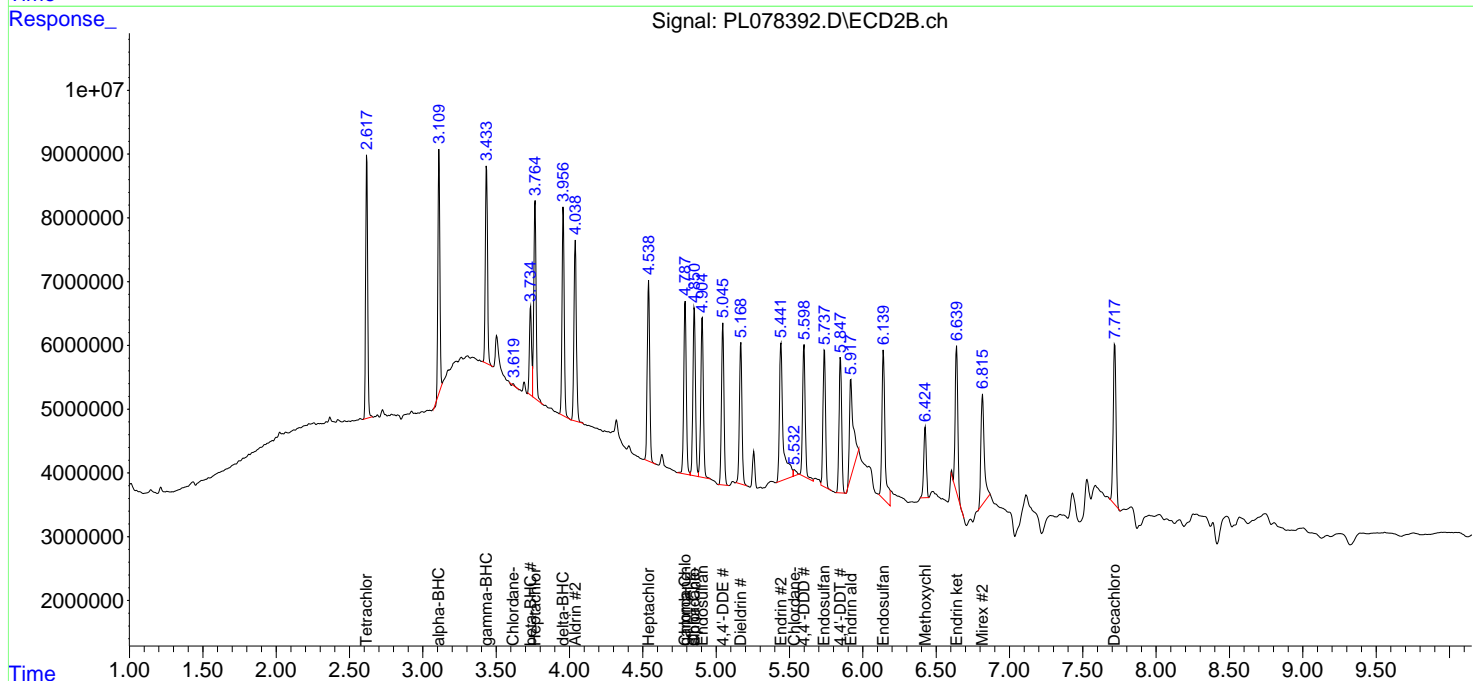
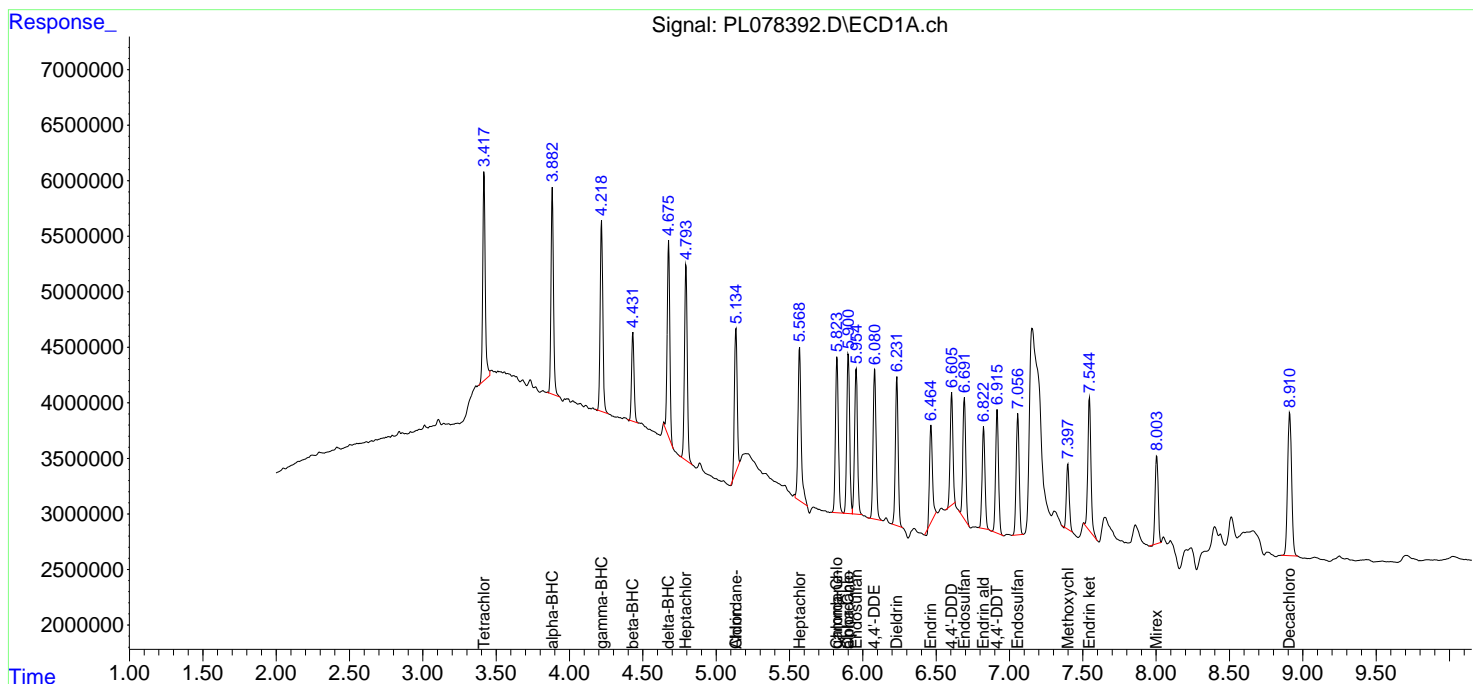
(f)=RT Delta > 1/2 Window (#)=Amounts differ by > 25% (m)=manual int.

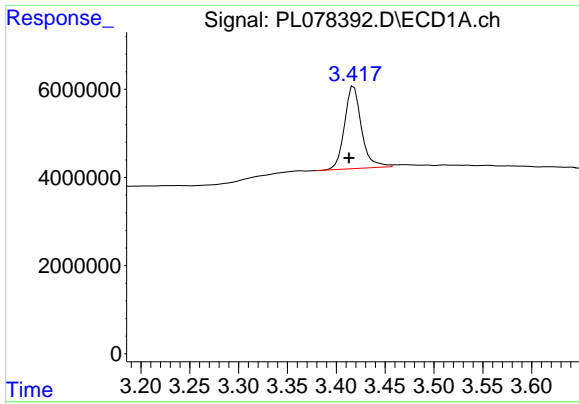
Data Path : Z:\pestpcbsrv\HPCHEM1\ECD\_L\Data\PL101722\  
 Data File : PL078392.D  
 Signal(s) : Signal #1: ECD1A.ch Signal #2: ECD2B.ch  
 Acq On : 17 Oct 2022 12:07  
 Operator : AR\AJ  
 Sample : PB148346BS  
 Misc :  
 ALS Vial : 5 Sample Multiplier: 1

Instrument :  
 ECD\_L  
 ClientSampleId :

Integration File signal 1: autoint1.e  
 Integration File signal 2: autoint2.e  
 Quant Time: Oct 17 23:50:30 2022  
 Quant Method : Z:\pestpcbsrv\HPCHEM1\ECD\_L\methods\PL101222.M  
 Quant Title : GC Extractables  
 QLast Update : Wed Oct 12 15:30:54 2022  
 Response via : Initial Calibration  
 Integrator: ChemStation

Volume Inj. : 1 µl  
 Signal #1 Phase : ZB-MR2 Signal #2 Phase: ZB-MR1  
 Signal #1 Info : 30M x 0.32mm x0.2 Signal #2 Info : 30M x 0.32mm x0.5µm

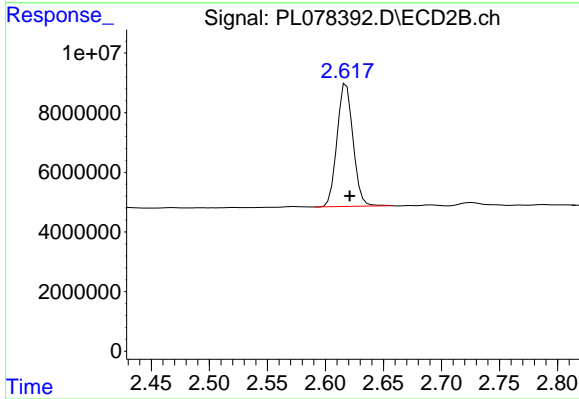




#1 Tetrachloro-m-xylene

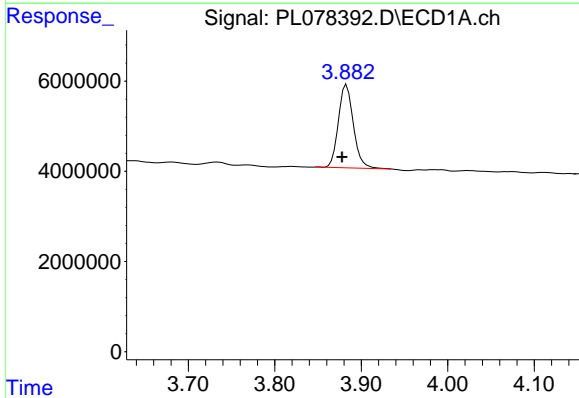
R.T.: 3.418 min  
 Delta R.T.: 0.005 min  
 Response: 22620740  
 Conc: 13.69 ng/ml

Instrument :  
 ECD\_L  
 ClientSampleId :



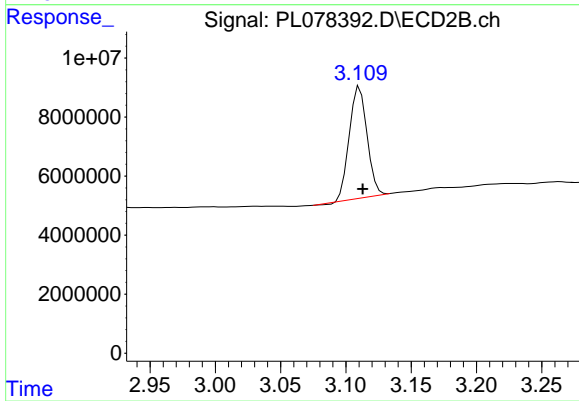
#1 Tetrachloro-m-xylene

R.T.: 2.618 min  
 Delta R.T.: -0.003 min  
 Response: 39595283  
 Conc: 14.98 ng/ml



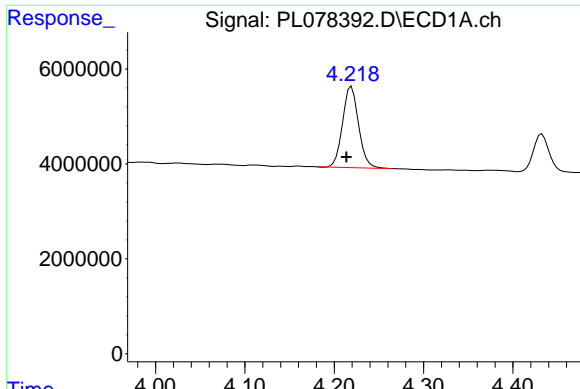
#2 alpha-BHC

R.T.: 3.883 min  
 Delta R.T.: 0.005 min  
 Response: 22048720  
 Conc: 8.77 ng/ml



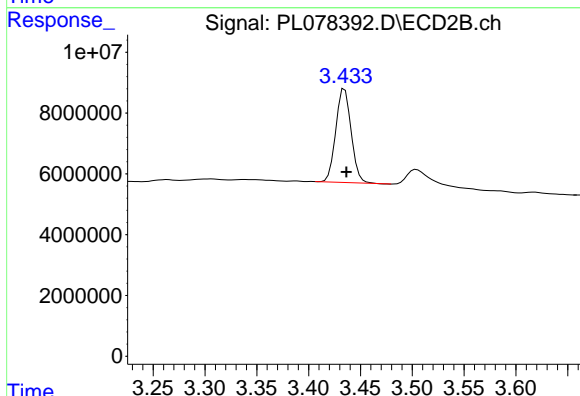
#2 alpha-BHC

R.T.: 3.111 min  
 Delta R.T.: -0.002 min  
 Response: 35602856  
 Conc: 8.55 ng/ml

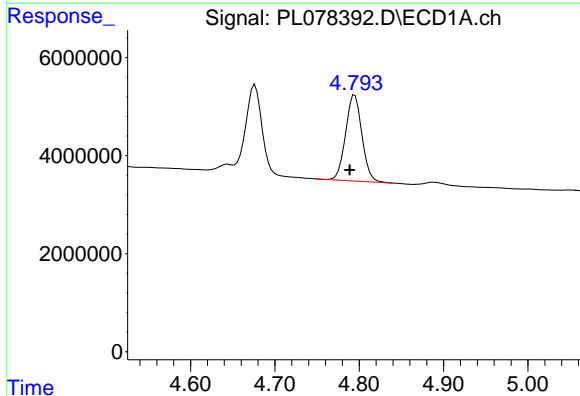


#3 gamma-BHC (Lindane)  
 R.T.: 4.219 min  
 Delta R.T.: 0.006 min  
 Response: 21215557  
 Conc: 9.10 ng/ml

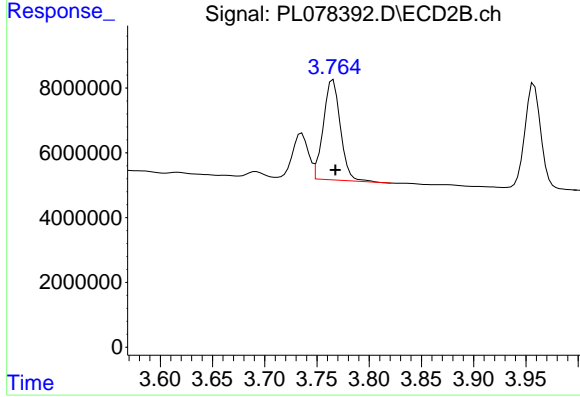
Instrument :  
 ECD\_L  
 ClientSampleId :



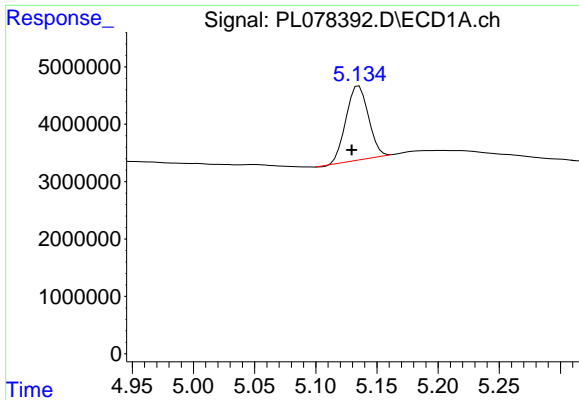
#3 gamma-BHC (Lindane)  
 R.T.: 3.435 min  
 Delta R.T.: -0.002 min  
 Response: 31800941  
 Conc: 9.13 ng/ml



#4 Heptachlor  
 R.T.: 4.795 min  
 Delta R.T.: 0.006 min  
 Response: 23566482  
 Conc: 10.60 ng/ml

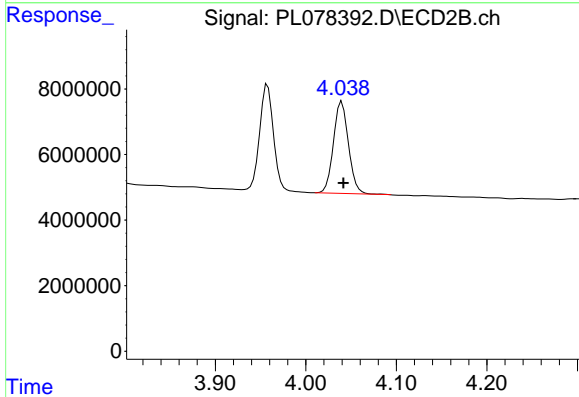


#4 Heptachlor  
 R.T.: 3.765 min  
 Delta R.T.: -0.002 min  
 Response: 35078715  
 Conc: 9.82 ng/ml

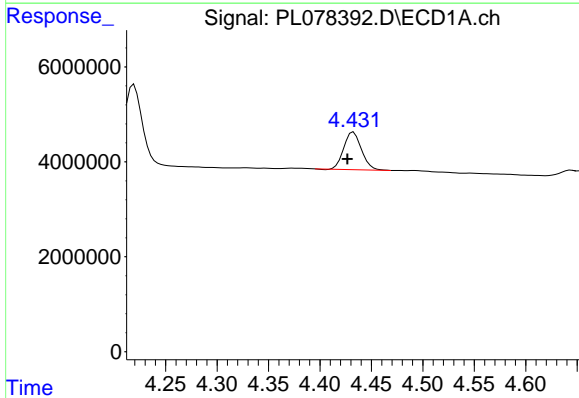


#5 Aldrin  
 R.T.: 5.135 min  
 Delta R.T.: 0.006 min  
 Response: 16315721  
 Conc: 7.79 ng/ml

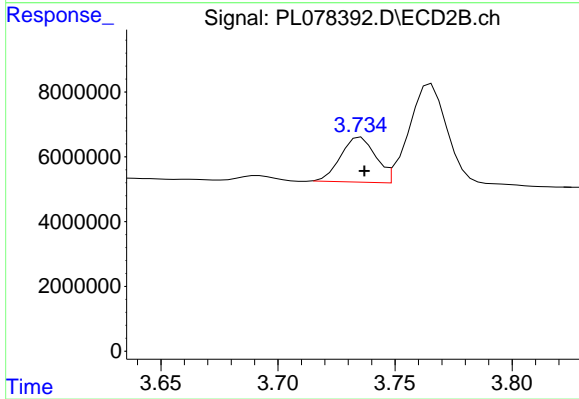
Instrument :  
 ECD\_L  
 ClientSampleId :



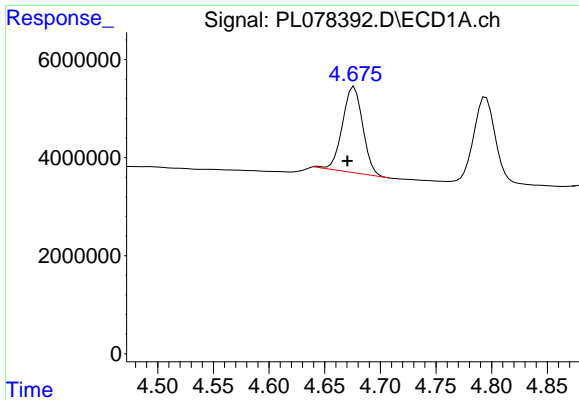
#5 Aldrin  
 R.T.: 4.040 min  
 Delta R.T.: -0.002 min  
 Response: 32168962  
 Conc: 9.46 ng/ml



#6 beta-BHC  
 R.T.: 4.433 min  
 Delta R.T.: 0.006 min  
 Response: 9531310  
 Conc: 9.58 ng/ml



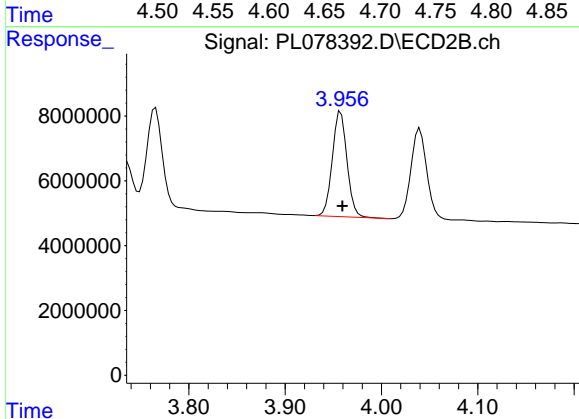
#6 beta-BHC  
 R.T.: 3.736 min  
 Delta R.T.: -0.001 min  
 Response: 14333464  
 Conc: 9.72 ng/ml



#7 delta-BHC

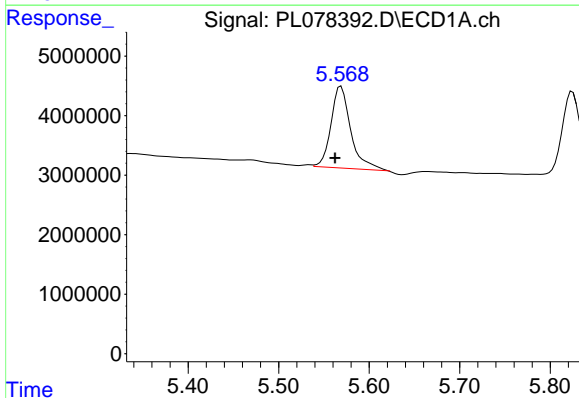
R.T.: 4.676 min  
 Delta R.T.: 0.006 min  
 Response: 21968015  
 Conc: 11.95 ng/ml

Instrument :  
 ECD\_L  
 ClientSampleId :



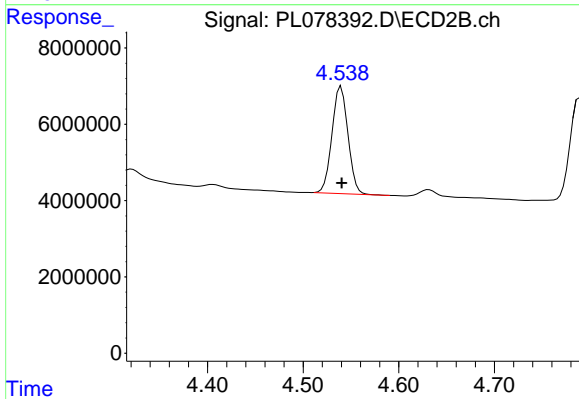
#7 delta-BHC

R.T.: 3.958 min  
 Delta R.T.: -0.002 min  
 Response: 34421085  
 Conc: 9.31 ng/ml



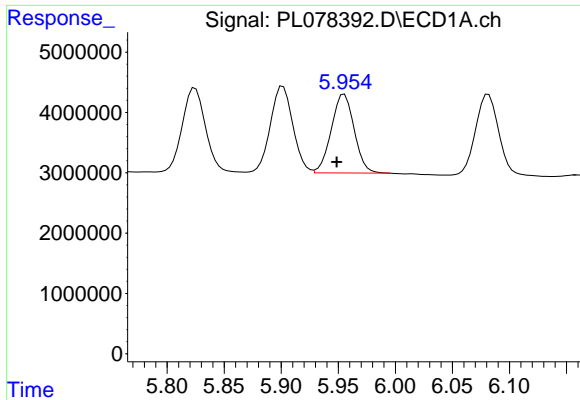
#8 Heptachlor epoxide

R.T.: 5.569 min  
 Delta R.T.: 0.007 min  
 Response: 20542949  
 Conc: 13.49 ng/ml



#8 Heptachlor epoxide

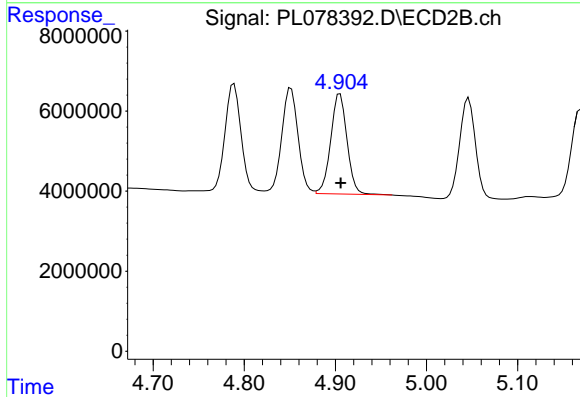
R.T.: 4.540 min  
 Delta R.T.: 0.000 min  
 Response: 32470862  
 Conc: 11.02 ng/ml



#9 Endosulfan I

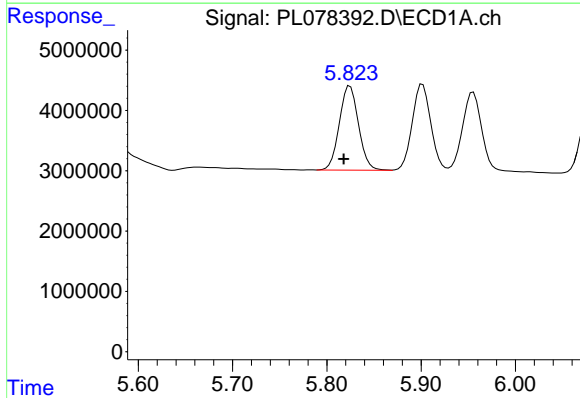
R.T.: 5.955 min  
 Delta R.T.: 0.007 min  
 Response: 18169388  
 Conc: 10.82 ng/ml

Instrument :  
 ECD\_L  
 ClientSampleId :



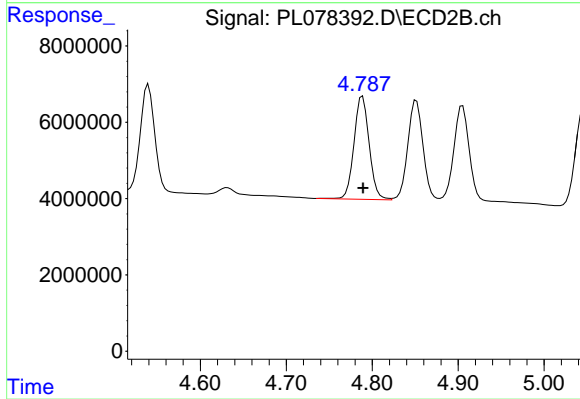
#9 Endosulfan I

R.T.: 4.905 min  
 Delta R.T.: 0.000 min  
 Response: 30923206  
 Conc: 11.21 ng/ml



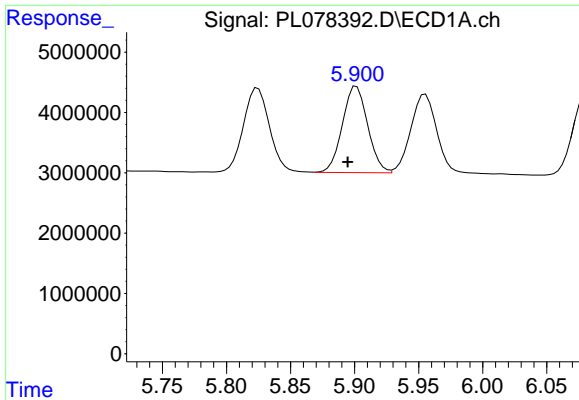
#10 gamma-Chlordane

R.T.: 5.824 min  
 Delta R.T.: 0.006 min  
 Response: 19739003  
 Conc: 11.08 ng/ml



#10 gamma-Chlordane

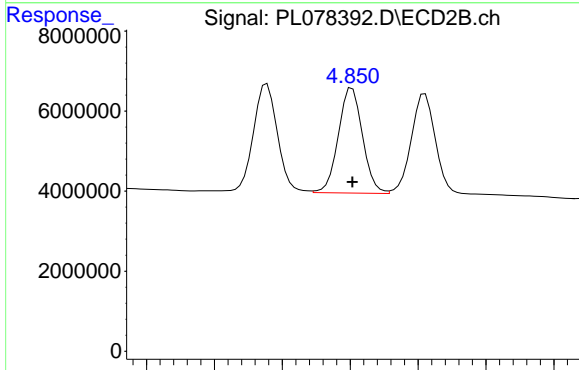
R.T.: 4.789 min  
 Delta R.T.: 0.000 min  
 Response: 33274150  
 Conc: 11.12 ng/ml



#11 alpha-Chlordane

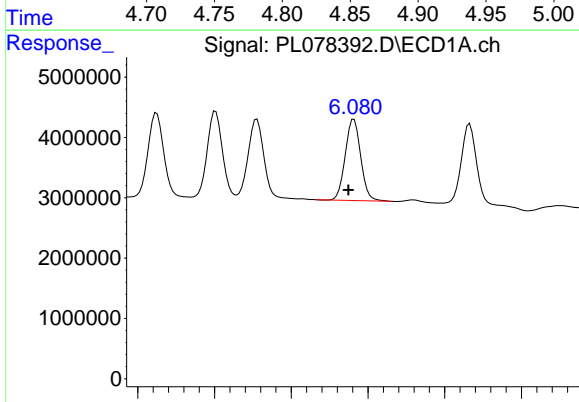
R.T.: 5.902 min  
 Delta R.T.: 0.007 min  
 Response: 19645492  
 Conc: 10.97 ng/ml

Instrument :  
 ECD\_L  
 ClientSampleId :



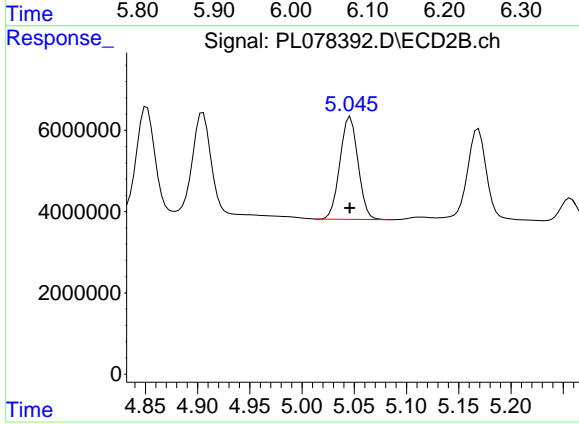
#11 alpha-Chlordane

R.T.: 4.851 min  
 Delta R.T.: 0.000 min  
 Response: 32525654  
 Conc: 11.30 ng/ml



#12 4,4'-DDE

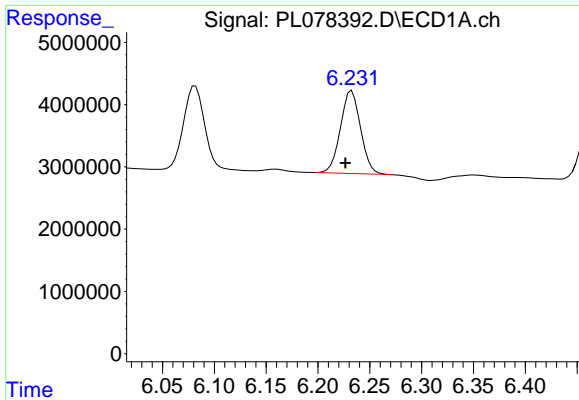
R.T.: 6.082 min  
 Delta R.T.: 0.007 min  
 Response: 19024840  
 Conc: 11.29 ng/ml



#12 4,4'-DDE

R.T.: 5.046 min  
 Delta R.T.: 0.000 min  
 Response: 30379091  
 Conc: 10.63 ng/ml

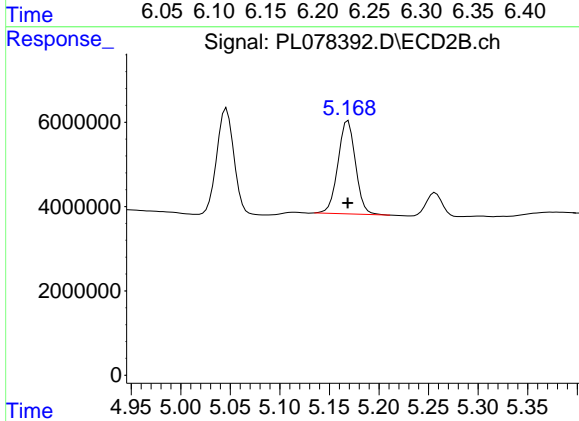




#13 Dieldrin

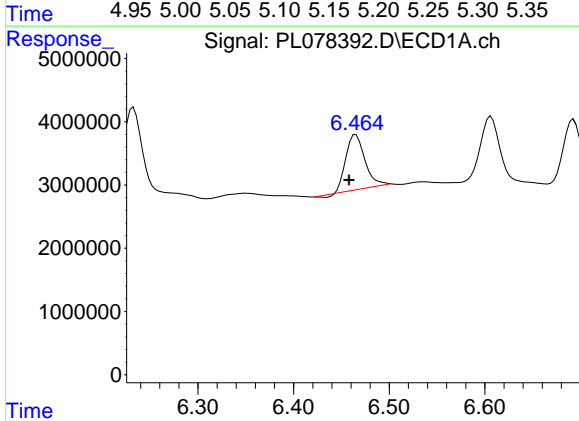
R.T.: 6.233 min  
 Delta R.T.: 0.006 min  
 Response: 17925529  
 Conc: 10.42 ng/ml

Instrument :  
 ECD\_L  
 ClientSampleId :



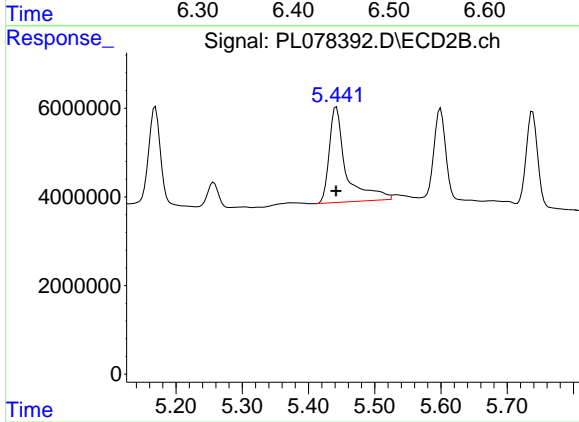
#13 Dieldrin

R.T.: 5.169 min  
 Delta R.T.: 0.000 min  
 Response: 27166470  
 Conc: 9.27 ng/ml



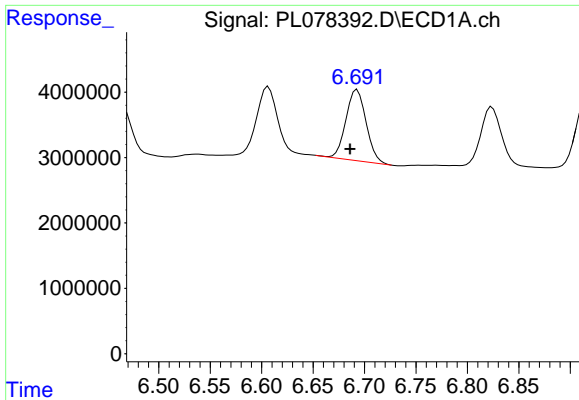
#14 Endrin

R.T.: 6.465 min  
 Delta R.T.: 0.007 min  
 Response: 12178669  
 Conc: 8.16 ng/ml



#14 Endrin

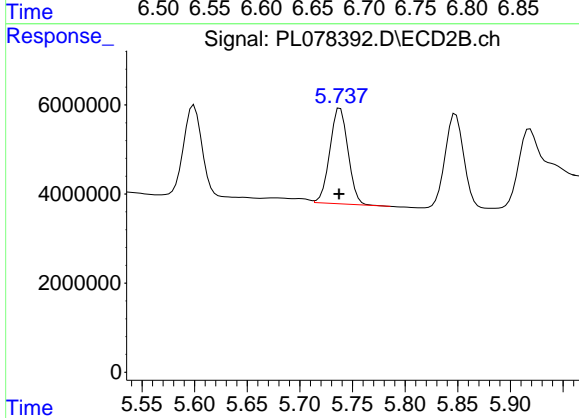
R.T.: 5.442 min  
 Delta R.T.: 0.000 min  
 Response: 38064696  
 Conc: 16.53 ng/ml



#15 Endosulfan II

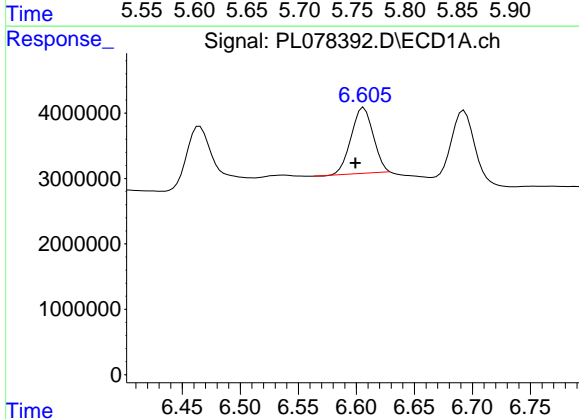
R.T.: 6.693 min  
Delta R.T.: 0.007 min  
Response: 14717462  
Conc: 10.98 ng/ml

Instrument :  
ECD\_L  
ClientSampleId :



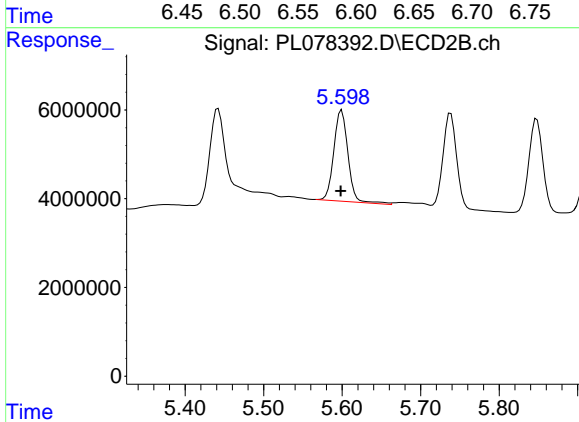
#15 Endosulfan II

R.T.: 5.738 min  
Delta R.T.: 0.000 min  
Response: 25649444  
Conc: 10.48 ng/ml



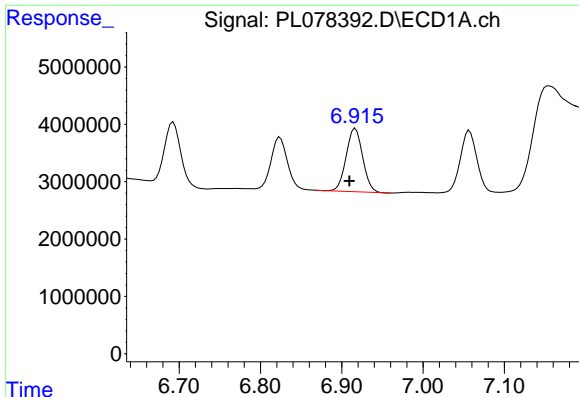
#16 4,4'-DDD

R.T.: 6.607 min  
Delta R.T.: 0.007 min  
Response: 13374741  
Conc: 10.86 ng/ml



#16 4,4'-DDD

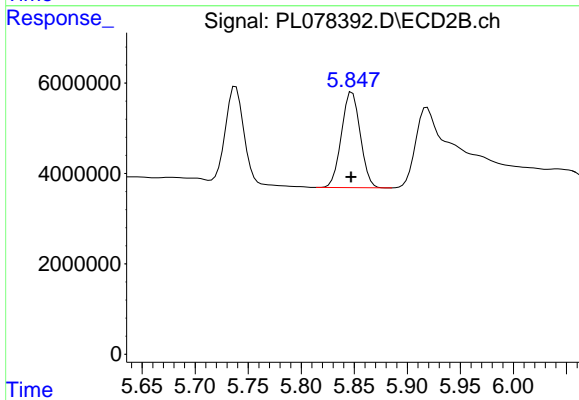
R.T.: 5.599 min  
Delta R.T.: 0.001 min  
Response: 25859024  
Conc: 11.61 ng/ml



#17 4,4'-DDT

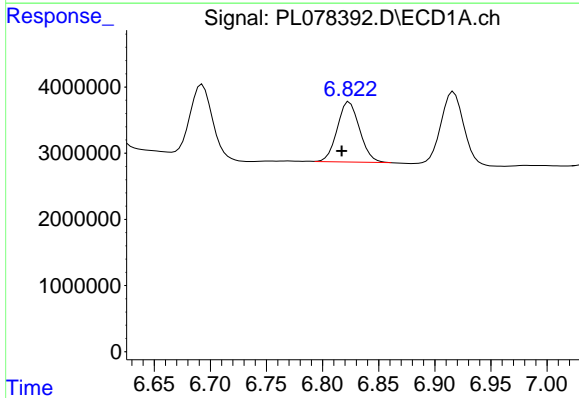
R.T.: 6.917 min  
 Delta R.T.: 0.007 min  
 Response: 15487406  
 Conc: 10.58 ng/ml

Instrument :  
 ECD\_L  
 ClientSampleId :



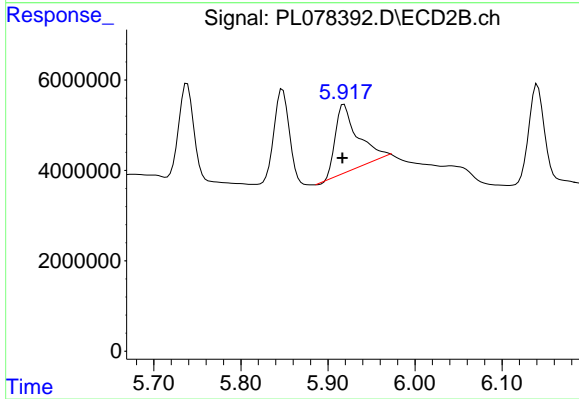
#17 4,4'-DDT

R.T.: 5.848 min  
 Delta R.T.: 0.001 min  
 Response: 26109816  
 Conc: 11.50 ng/ml



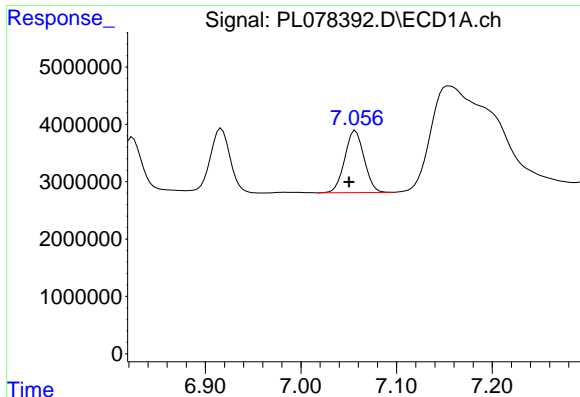
#18 Endrin aldehyde

R.T.: 6.824 min  
 Delta R.T.: 0.007 min  
 Response: 12548011  
 Conc: 10.96 ng/ml



#18 Endrin aldehyde

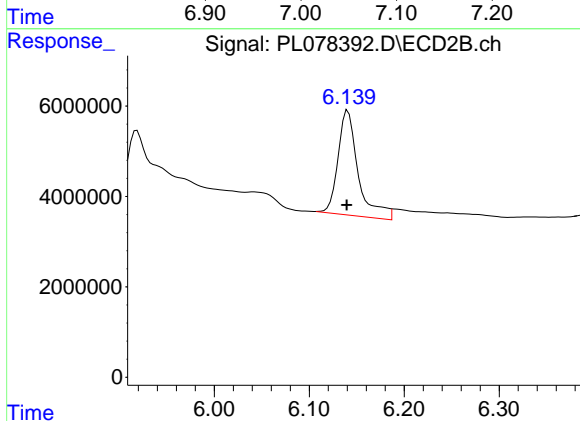
R.T.: 5.919 min  
 Delta R.T.: 0.002 min  
 Response: 27238819  
 Conc: 14.72 ng/ml



#19 Endosulfan Sulfate

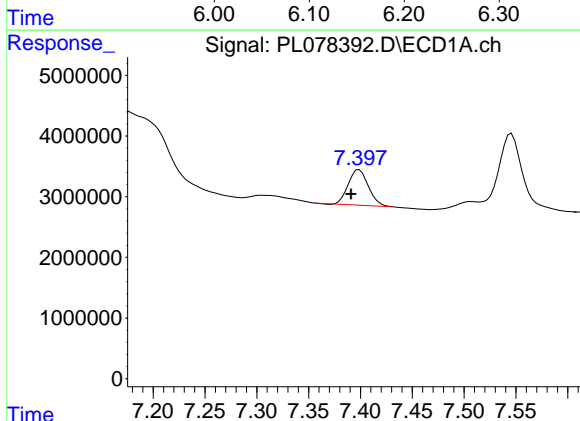
R.T.: 7.057 min  
 Delta R.T.: 0.007 min  
 Response: 15275209  
 Conc: 10.71 ng/ml

Instrument :  
 ECD\_L  
 ClientSampleId :



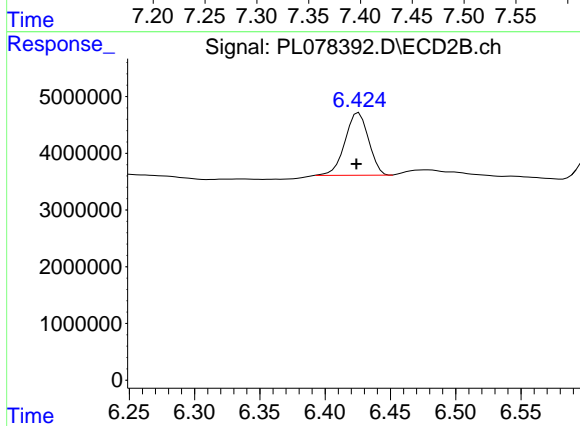
#19 Endosulfan Sulfate

R.T.: 6.141 min  
 Delta R.T.: 0.001 min  
 Response: 33845926  
 Conc: 14.06 ng/ml



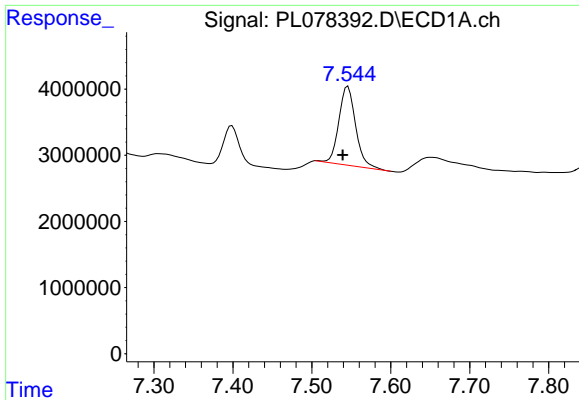
#20 Methoxychlor

R.T.: 7.399 min  
 Delta R.T.: 0.008 min  
 Response: 7784514  
 Conc: 10.27 ng/ml



#20 Methoxychlor

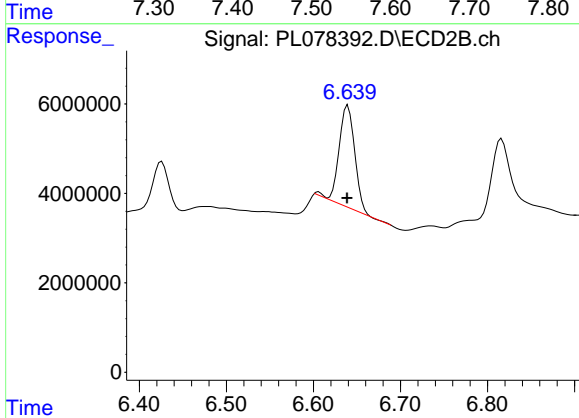
R.T.: 6.426 min  
 Delta R.T.: 0.002 min  
 Response: 13842342  
 Conc: 10.96 ng/ml



#21 Endrin ketone

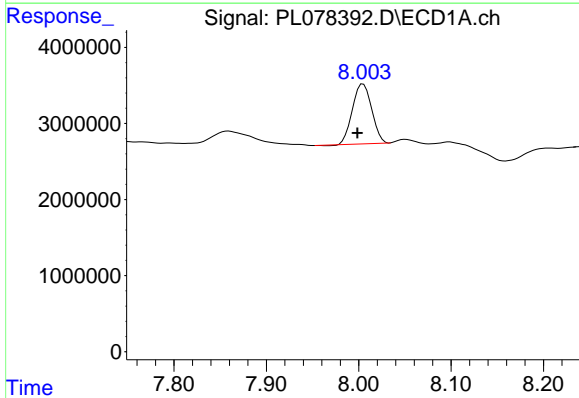
R.T.: 7.546 min  
 Delta R.T.: 0.007 min  
 Response: 17491445  
 Conc: 11.21 ng/ml

Instrument :  
 ECD\_L  
 ClientSampleId :



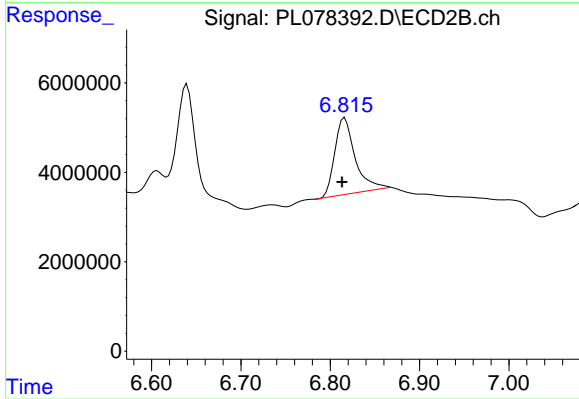
#21 Endrin ketone

R.T.: 6.640 min  
 Delta R.T.: 0.001 min  
 Response: 27654347  
 Conc: 10.44 ng/ml



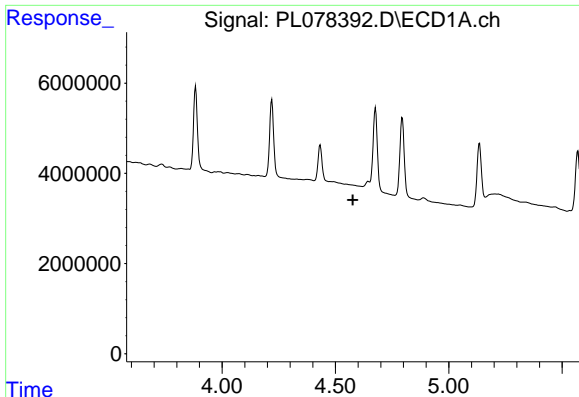
#22 Mirex

R.T.: 8.005 min  
 Delta R.T.: 0.006 min  
 Response: 11399394  
 Conc: 9.65 ng/ml



#22 Mirex

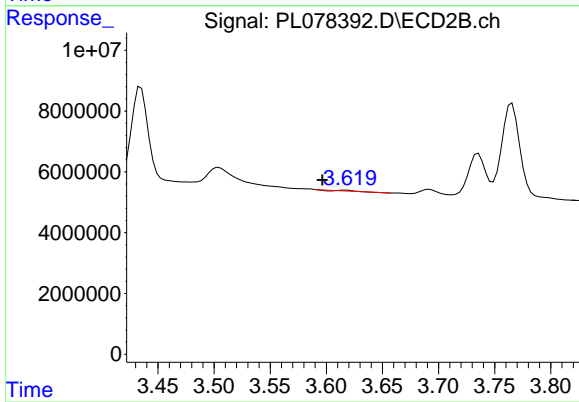
R.T.: 6.816 min  
 Delta R.T.: 0.003 min  
 Response: 27456588  
 Conc: 14.27 ng/ml



#23 Chlordane-1

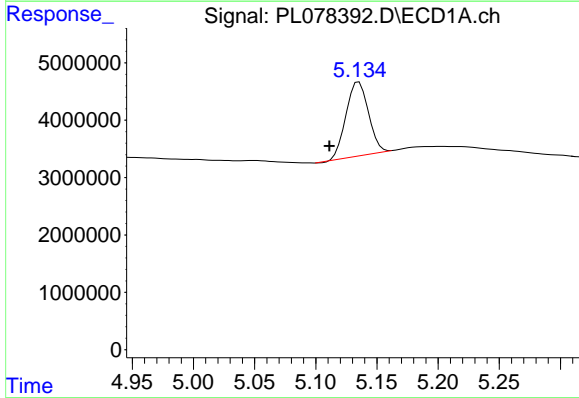
R.T.: 0.000 min  
 Exp R.T.: 4.577 min  
 Response: 0  
 Conc: N.D.

Instrument :  
 ECD\_L  
 ClientSampleId :



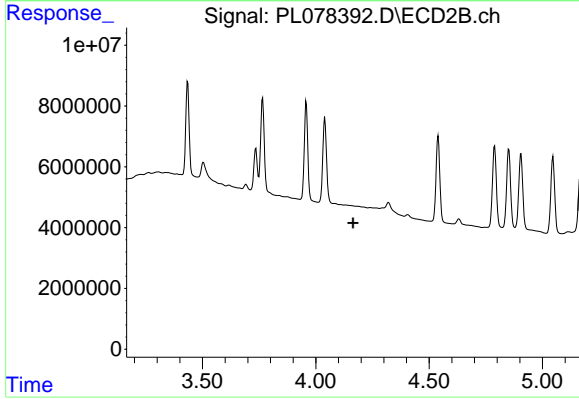
#23 Chlordane-1

R.T.: 3.617 min  
 Delta R.T.: 0.021 min  
 Response: 205617  
 Conc: 2.15 ng/ml



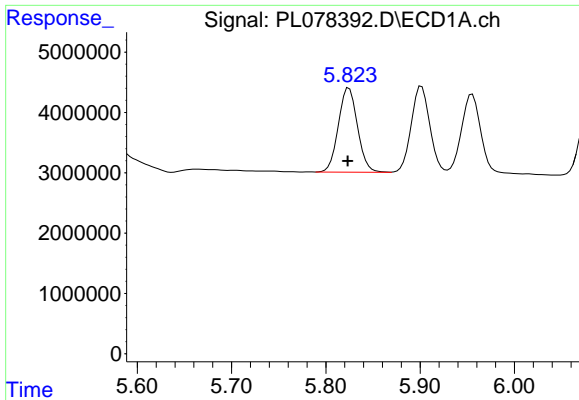
#24 Chlordane-2

R.T.: 5.135 min  
 Delta R.T.: 0.024 min  
 Response: 16315721  
 Conc: 231.65 ng/ml



#24 Chlordane-2

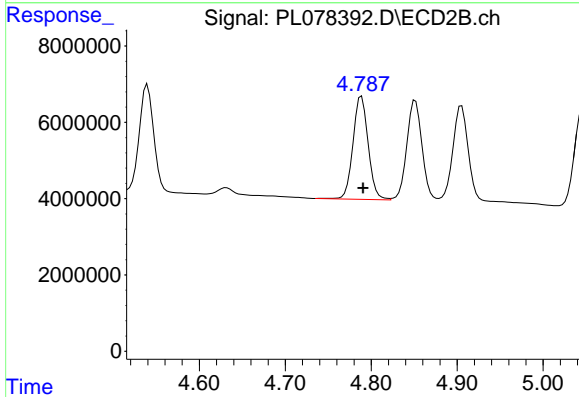
R.T.: 0.000 min  
 Exp R.T.: 4.165 min  
 Response: 0  
 Conc: N.D.



#25 Chlordane-3

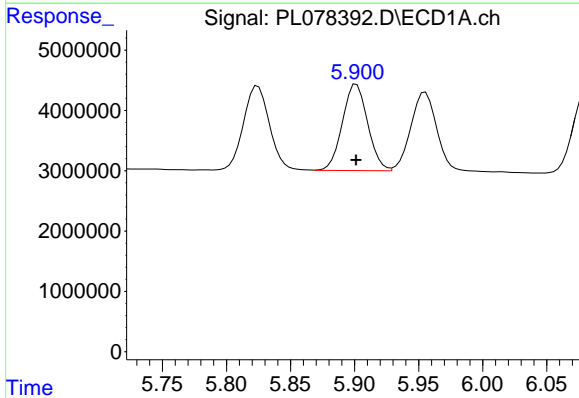
R.T.: 5.824 min  
 Delta R.T.: 0.001 min  
 Response: 19739003  
 Conc: 75.93 ng/ml

Instrument :  
 ECD\_L  
 ClientSampleId :



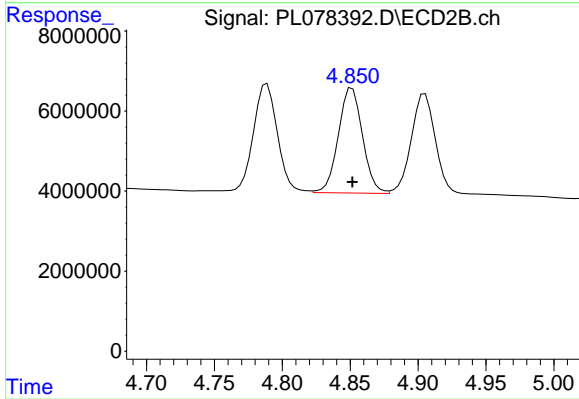
#25 Chlordane-3

R.T.: 4.789 min  
 Delta R.T.: -0.002 min  
 Response: 33274150  
 Conc: 108.75 ng/ml



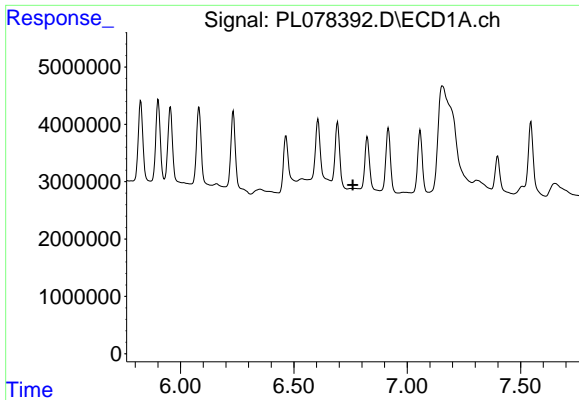
#26 Chlordane-4

R.T.: 5.902 min  
 Delta R.T.: 0.000 min  
 Response: 19645492  
 Conc: 61.51 ng/ml



#26 Chlordane-4

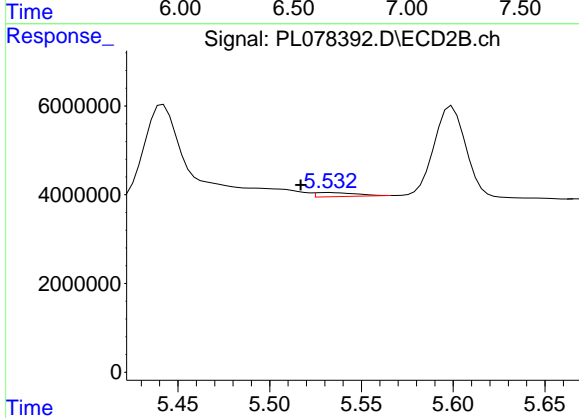
R.T.: 4.851 min  
 Delta R.T.: 0.000 min  
 Response: 32525654  
 Conc: 100.72 ng/ml



#27 Chlordane-5

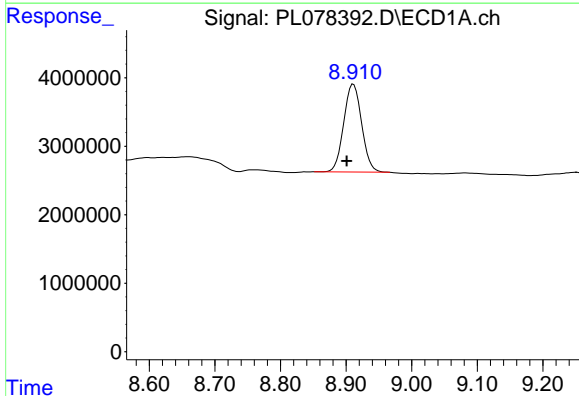
R.T.: 0.000 min  
 Exp R.T.: 6.760 min  
 Response: 0  
 Conc: N.D.

Instrument :  
 ECD\_L  
 ClientSampleId :



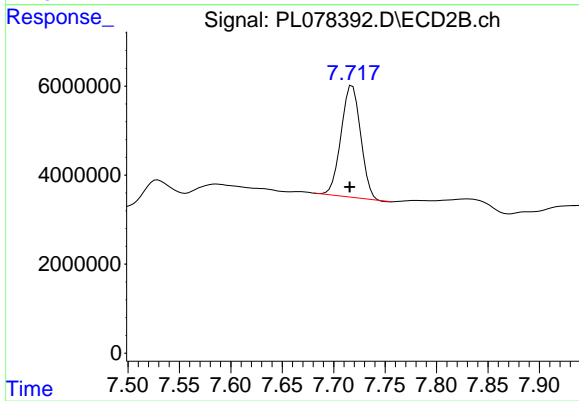
#27 Chlordane-5

R.T.: 5.533 min  
 Delta R.T.: 0.016 min  
 Response: 1514479  
 Conc: 17.75 ng/ml



#28 Decachlorobiphenyl

R.T.: 8.911 min  
 Delta R.T.: 0.010 min  
 Response: 24413385  
 Conc: 15.81 ng/ml



#28 Decachlorobiphenyl

R.T.: 7.718 min  
 Delta R.T.: 0.003 min  
 Response: 33411853  
 Conc: 15.37 ng/ml