

Data Path : Z:\pestpcbsrv\HPCHEM1\ECD\_L\Data\PL101722\  
 Data File : PL078398.D  
 Signal(s) : Signal #1: ECD1A.ch Signal #2: ECD2B.ch  
 Acq On : 17 Oct 2022 15:00  
 Operator : AR\AJ  
 Sample : PB148380BS  
 Misc :  
 ALS Vial : 11 Sample Multiplier: 1

Instrument :  
 ECD\_L  
 ClientSampleId :

Integration File signal 1: autoint1.e  
 Integration File signal 2: autoint2.e  
 Quant Time: Oct 17 23:56:20 2022  
 Quant Method : Z:\pestpcbsrv\HPCHEM1\ECD\_L\methods\PL101222.M  
 Quant Title : GC Extractables  
 QLast Update : Wed Oct 12 15:30:54 2022  
 Response via : Initial Calibration  
 Integrator: ChemStation

Volume Inj. : 1 µl  
 Signal #1 Phase : ZB-MR2 Signal #2 Phase: ZB-MR1  
 Signal #1 Info : 30M x 0.32mm x0.2 Signal #2 Info : 30M x 0.32mm x0.5µm

	Compound	RT#1	RT#2	Resp#1	Resp#2	ng/ml	ng/ml
-----							
System Monitoring Compounds							
1)	SA Tetrachlo...	3.413	2.620	32260803	51490168	19.521	19.480
28)	SA Decachlor...	8.905	7.715	30071880	44122439	19.479	20.297
Target Compounds							
2)	A alpha-BHC	3.878	3.112	114.2E6	194.2E6	45.395	46.647
3)	MA gamma-BHC...	4.214	3.435	105.9E6	168.7E6	45.430	48.424
4)	MA Heptachlor	4.789	3.766	102.7E6	169.4E6	46.193	47.425
5)	MB Aldrin	5.130	4.040	99683101	169.3E6	47.596	49.760
6)	B beta-BHC	4.427	3.735	44613350	65723322	44.855	44.580
7)	B delta-BHC	4.672	3.958	93645771	174.1E6	50.954	47.103
8)	Heptachlo...	5.563	4.539	81986930	144.2E6	53.850	48.930
9)	A Endosulfan I	5.949	4.904	78251927	134.0E6	46.614	48.575
10)	B gamma-Chl...	5.819	4.788	85933309	146.0E6	48.228	48.773
11)	B alpha-Chl...	5.895	4.850	85410352	141.1E6	47.696	48.984
12)	B 4,4'-DDE	6.076	5.044	82937396	141.8E6	49.210	49.587
13)	MA Dieldrin	6.227	5.167	81053624	148.2E6	47.110	50.594
14)	MA Endrin	6.459	5.440	71586079	118.8E6	47.974	51.584
15)	B Endosulfa...	6.687	5.737	69119956	125.0E6	51.560	51.049
16)	A 4,4'-DDD	6.601	5.598	58082638	110.0E6	47.171	49.393
17)	MA 4,4'-DDT	6.912	5.846	66607913	117.3E6	45.499	51.663
18)	B Endrin al...	6.818	5.915	56941020	97735777	49.757	52.821
19)	B Endosulfa...	7.051	6.139	65083781	117.7E6	45.630	48.876
20)	A Methoxychlor	7.393	6.424	34219675	62584930	45.162	49.552
21)	B Endrin ke...	7.540	6.638	69639881	128.7E6	44.638	48.584
22)	Mirex	8.000	6.813	54303702	93672806	45.975	48.691
24)	Chlordane-2	5.130f	0.000	99683101	0	1415.279	N.D. #
25)	Chlordane-3	5.819	4.788	85933309	146.0E6	330.539	477.183 #
26)	Chlordane-4	5.895	4.850	85410352	141.1E6	267.431	436.816 #

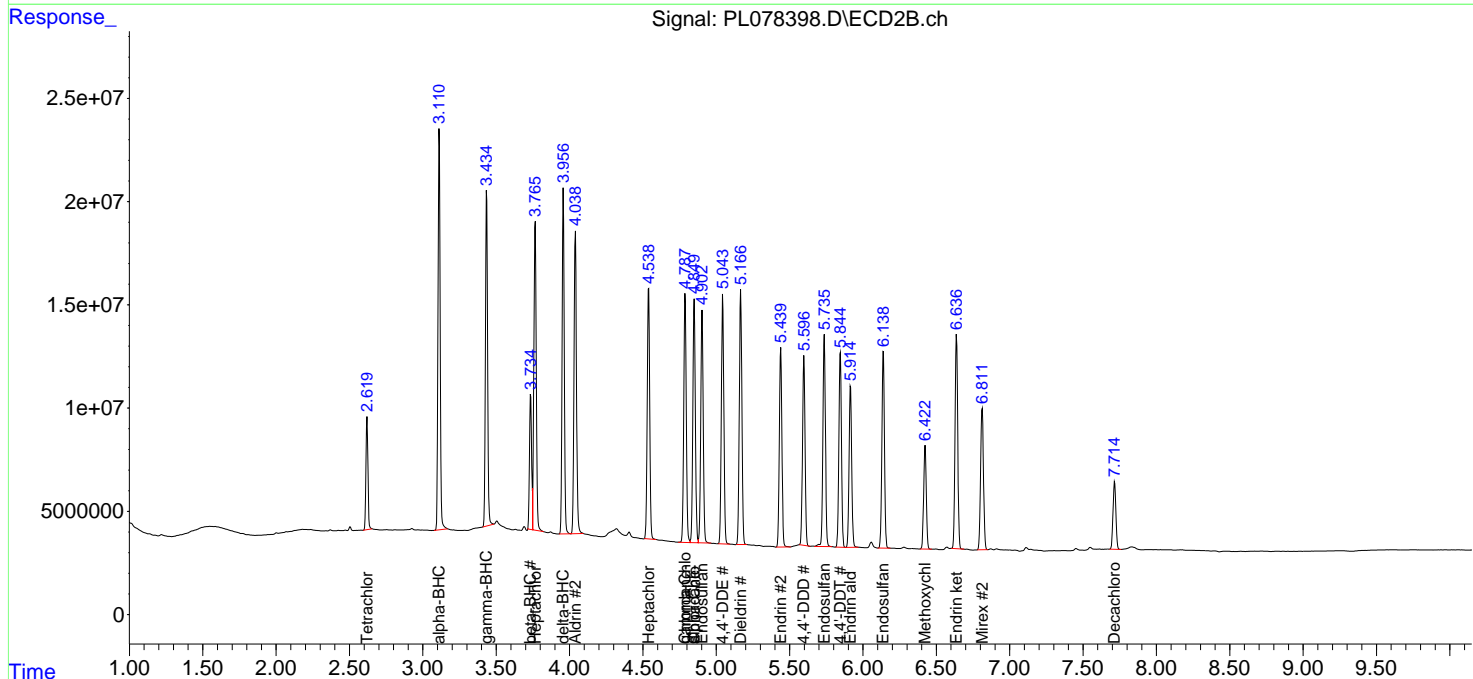
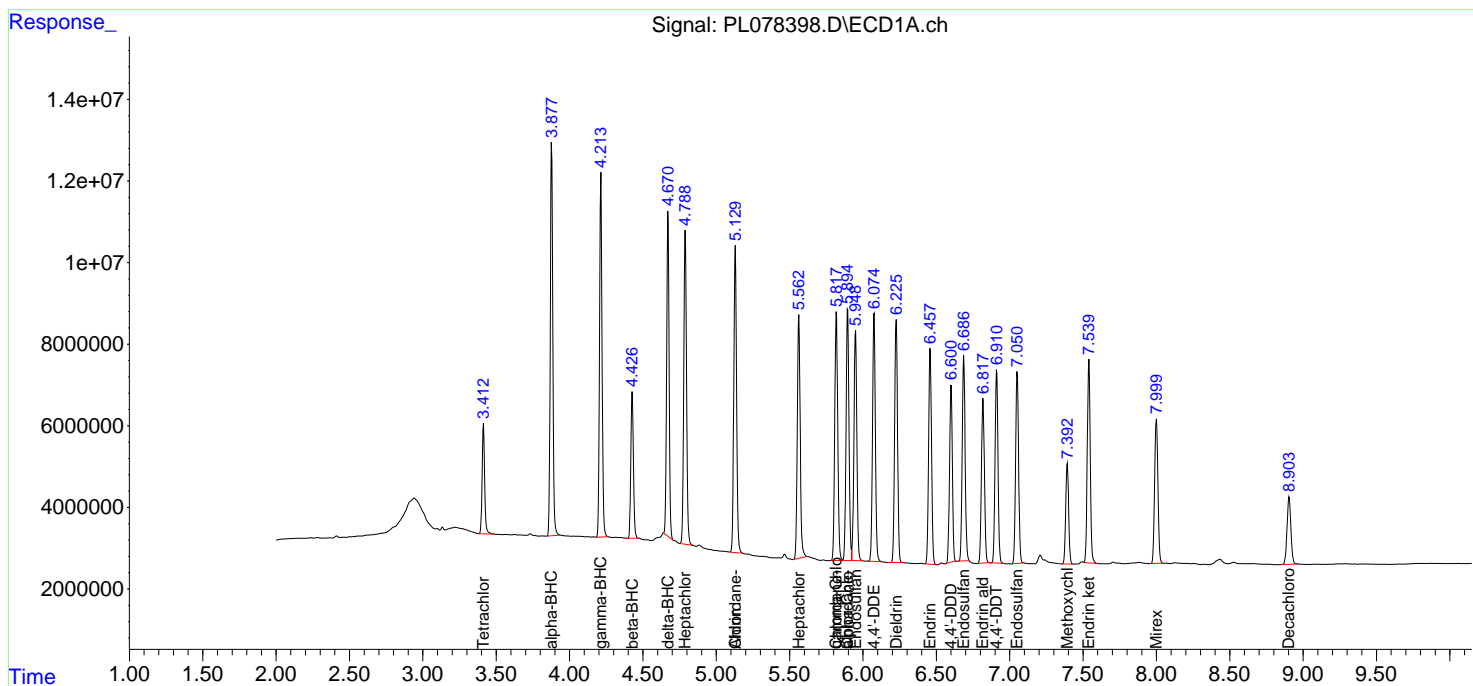
(f)=RT Delta > 1/2 Window (#)=Amounts differ by > 25% (m)=manual int.

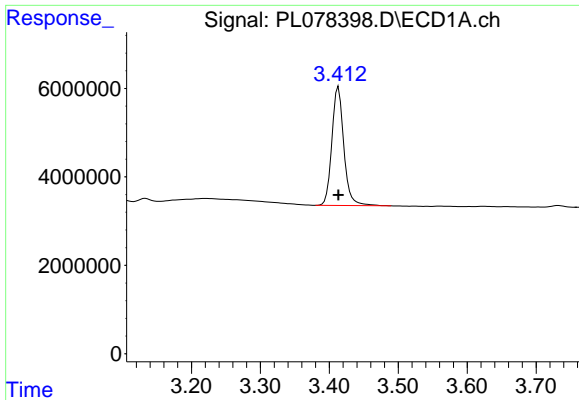
Data Path : Z:\pestpcbsrv\HPCHEM1\ECD\_L\Data\PL101722\  
 Data File : PL078398.D  
 Signal(s) : Signal #1: ECD1A.ch Signal #2: ECD2B.ch  
 Acq On : 17 Oct 2022 15:00  
 Operator : AR\AJ  
 Sample : PB148380BS  
 Misc :  
 ALS Vial : 11 Sample Multiplier: 1

Instrument :  
 ECD\_L  
 ClientSampleId :

Integration File signal 1: autoint1.e  
 Integration File signal 2: autoint2.e  
 Quant Time: Oct 17 23:56:20 2022  
 Quant Method : Z:\pestpcbsrv\HPCHEM1\ECD\_L\methods\PL101222.M  
 Quant Title : GC Extractables  
 QLast Update : Wed Oct 12 15:30:54 2022  
 Response via : Initial Calibration  
 Integrator: ChemStation

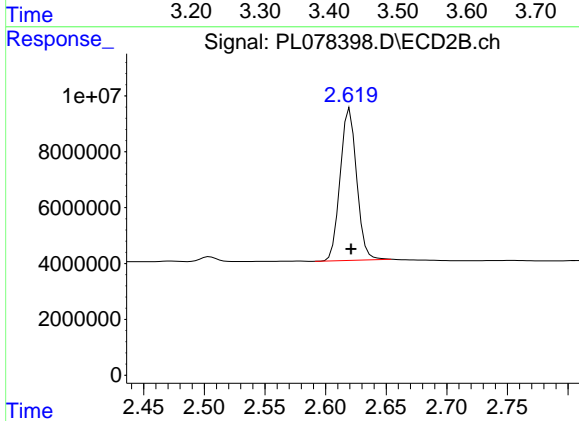
Volume Inj. : 1 µl  
 Signal #1 Phase : ZB-MR2 Signal #2 Phase: ZB-MR1  
 Signal #1 Info : 30M x 0.32mm x0.2 Signal #2 Info : 30M x 0.32mm x0.5µm



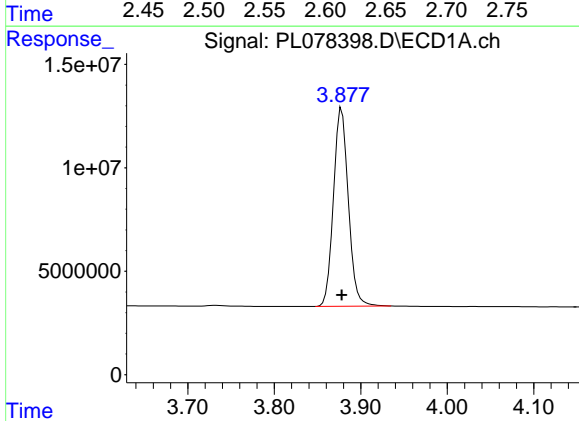


#1 Tetrachloro-m-xylene  
 R.T.: 3.413 min  
 Delta R.T.: 0.000 min  
 Response: 32260803  
 Conc: 19.52 ng/ml

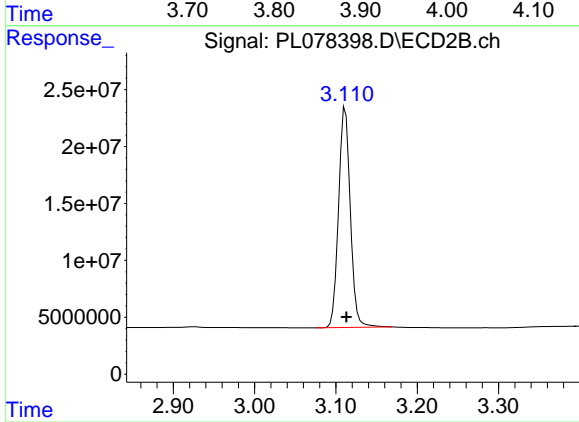
Instrument :  
 ECD\_L  
 ClientSampleId :



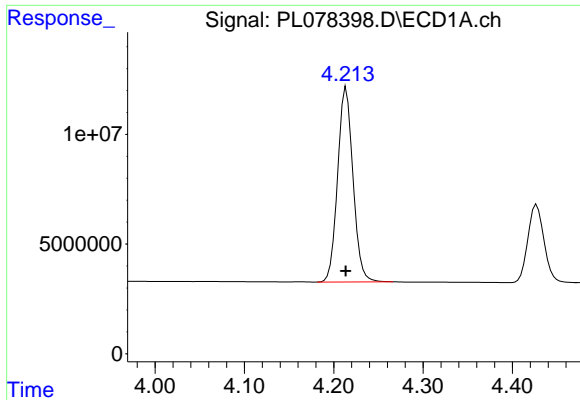
#1 Tetrachloro-m-xylene  
 R.T.: 2.620 min  
 Delta R.T.: 0.000 min  
 Response: 51490168  
 Conc: 19.48 ng/ml



#2 alpha-BHC  
 R.T.: 3.878 min  
 Delta R.T.: 0.000 min  
 Response: 114155464  
 Conc: 45.39 ng/ml

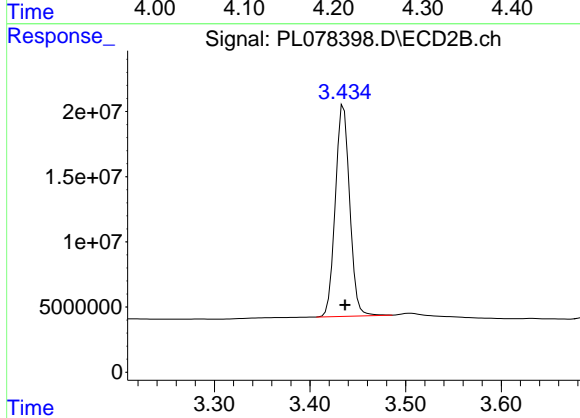


#2 alpha-BHC  
 R.T.: 3.112 min  
 Delta R.T.: -0.001 min  
 Response: 194157100  
 Conc: 46.65 ng/ml

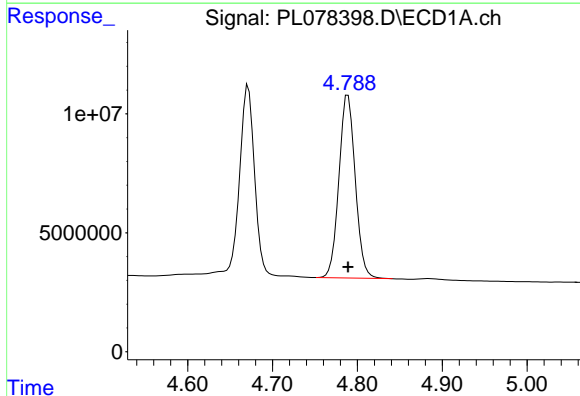


#3 gamma-BHC (Lindane)  
 R.T.: 4.214 min  
 Delta R.T.: 0.000 min  
 Response: 105943338  
 Conc: 45.43 ng/ml

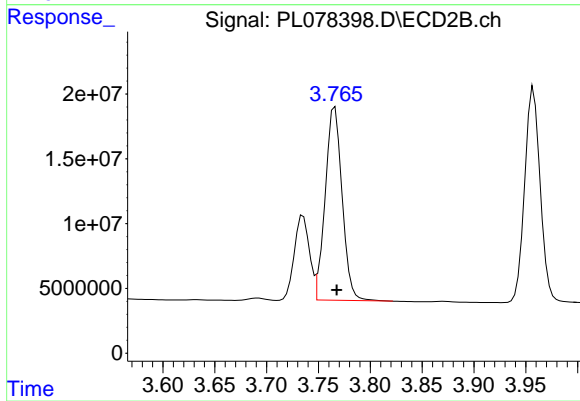
Instrument :  
 ECD\_L  
 ClientSampleId :



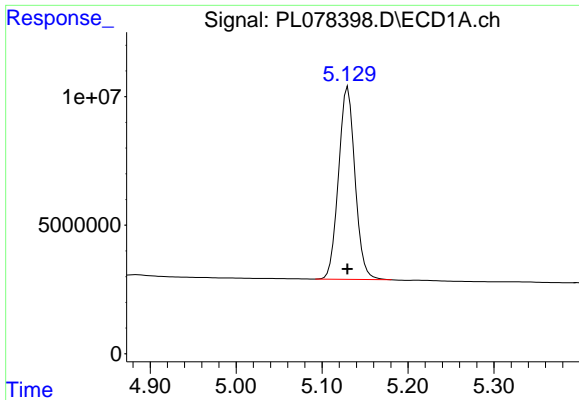
#3 gamma-BHC (Lindane)  
 R.T.: 3.435 min  
 Delta R.T.: -0.001 min  
 Response: 168735963  
 Conc: 48.42 ng/ml



#4 Heptachlor  
 R.T.: 4.789 min  
 Delta R.T.: 0.000 min  
 Response: 102678975  
 Conc: 46.19 ng/ml



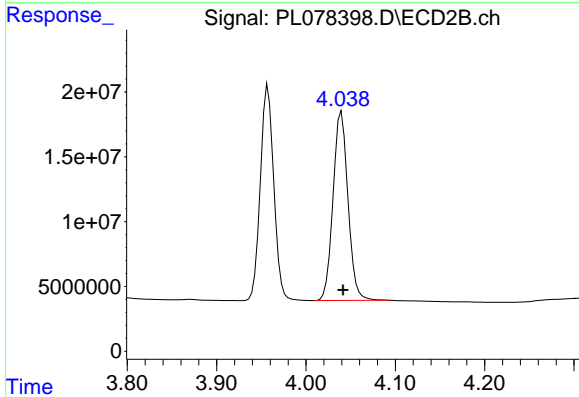
#4 Heptachlor  
 R.T.: 3.766 min  
 Delta R.T.: -0.002 min  
 Response: 169373732  
 Conc: 47.42 ng/ml



#5 Aldrin

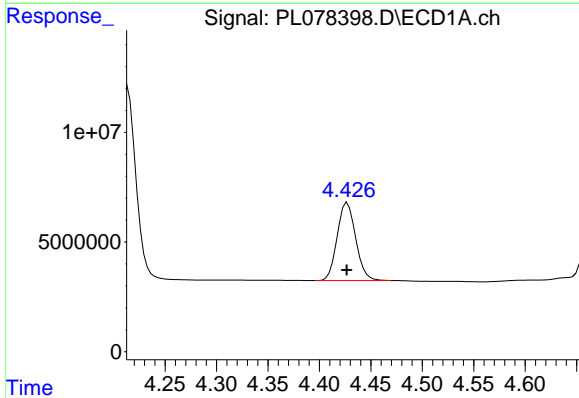
R.T.: 5.130 min  
 Delta R.T.: 0.000 min  
 Response: 99683101  
 Conc: 47.60 ng/ml

Instrument :  
 ECD\_L  
 ClientSampleId :



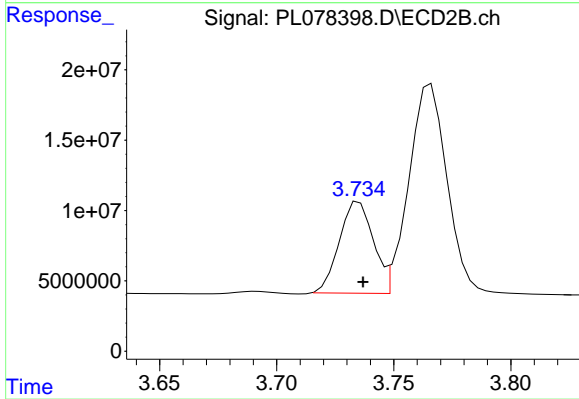
#5 Aldrin

R.T.: 4.040 min  
 Delta R.T.: -0.002 min  
 Response: 169282267  
 Conc: 49.76 ng/ml



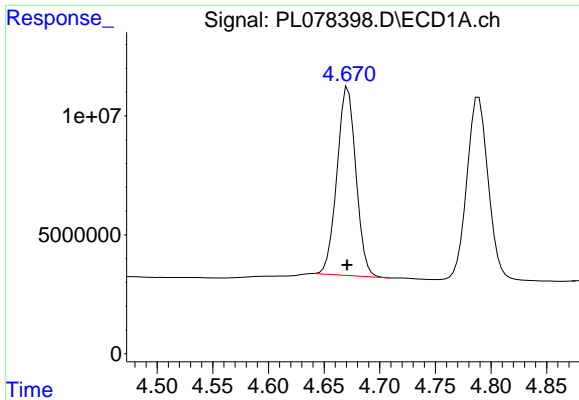
#6 beta-BHC

R.T.: 4.427 min  
 Delta R.T.: 0.000 min  
 Response: 44613350  
 Conc: 44.86 ng/ml



#6 beta-BHC

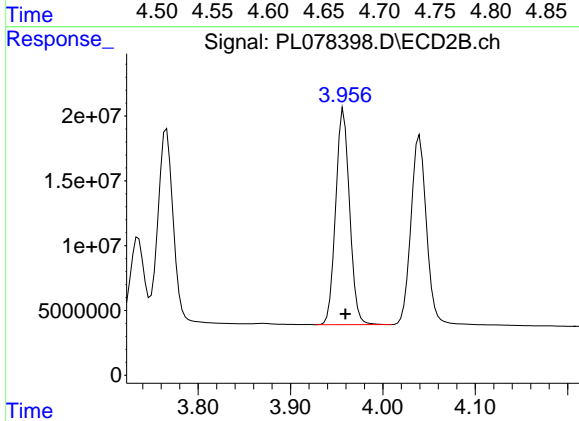
R.T.: 3.735 min  
 Delta R.T.: -0.002 min  
 Response: 65723322  
 Conc: 44.58 ng/ml



#7 delta-BHC

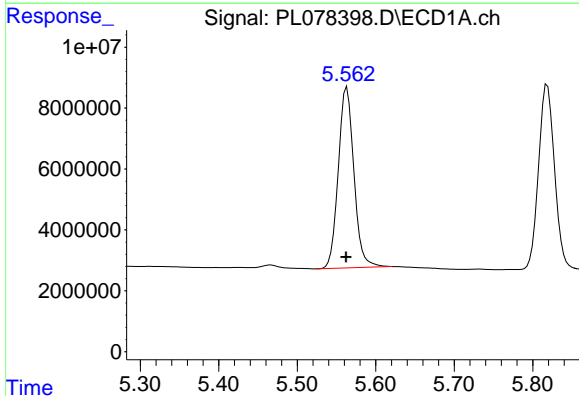
R.T.: 4.672 min  
 Delta R.T.: 0.001 min  
 Response: 93645771  
 Conc: 50.95 ng/ml

Instrument :  
 ECD\_L  
 ClientSampleId :



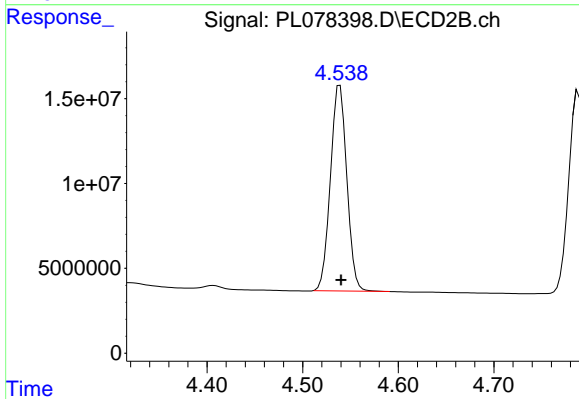
#7 delta-BHC

R.T.: 3.958 min  
 Delta R.T.: -0.002 min  
 Response: 174118712  
 Conc: 47.10 ng/ml



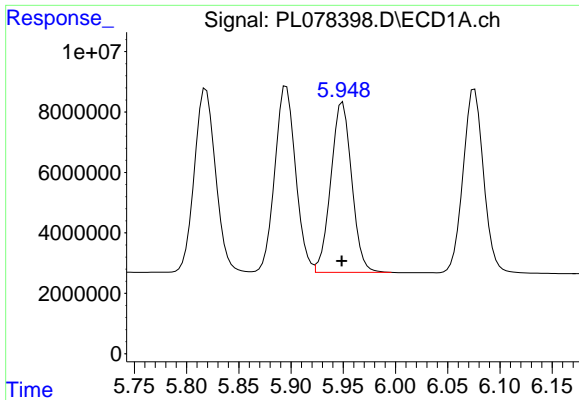
#8 Heptachlor epoxide

R.T.: 5.563 min  
 Delta R.T.: 0.001 min  
 Response: 81986930  
 Conc: 53.85 ng/ml



#8 Heptachlor epoxide

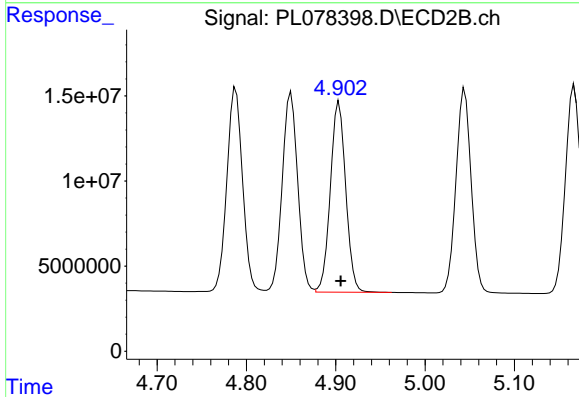
R.T.: 4.539 min  
 Delta R.T.: -0.001 min  
 Response: 144180020  
 Conc: 48.93 ng/ml



#9 Endosulfan I

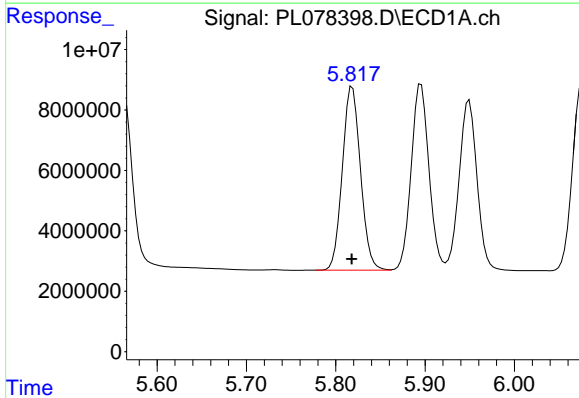
R.T.: 5.949 min  
 Delta R.T.: 0.000 min  
 Response: 78251927  
 Conc: 46.61 ng/ml

Instrument :  
 ECD\_L  
 ClientSampleId :



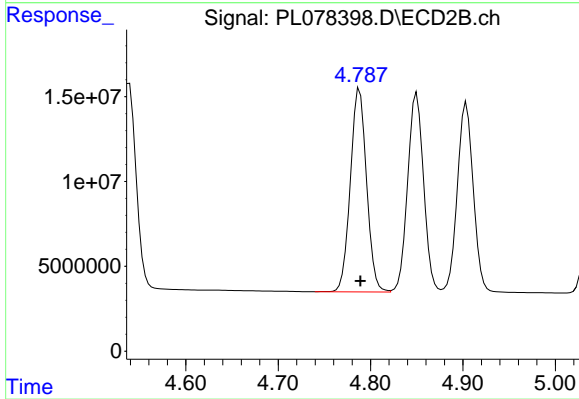
#9 Endosulfan I

R.T.: 4.904 min  
 Delta R.T.: -0.002 min  
 Response: 133974184  
 Conc: 48.57 ng/ml



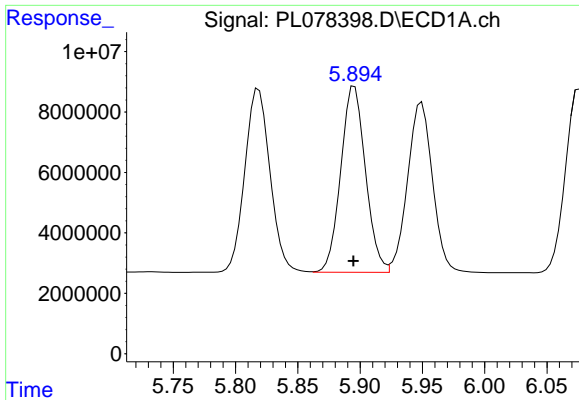
#10 gamma-Chlordane

R.T.: 5.819 min  
 Delta R.T.: 0.000 min  
 Response: 85933309  
 Conc: 48.23 ng/ml



#10 gamma-Chlordane

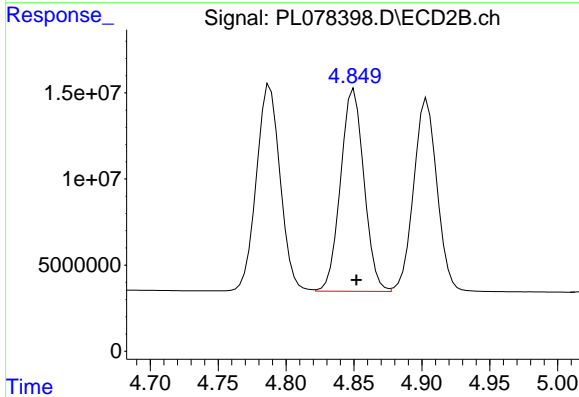
R.T.: 4.788 min  
 Delta R.T.: -0.001 min  
 Response: 145998283  
 Conc: 48.77 ng/ml



#11 alpha-Chlordane

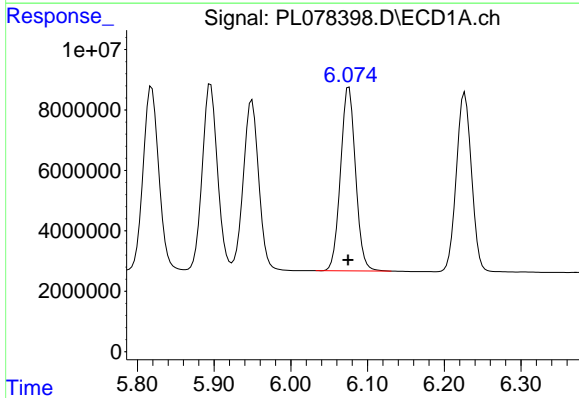
R.T.: 5.895 min  
 Delta R.T.: 0.000 min  
 Response: 85410352  
 Conc: 47.70 ng/ml

Instrument :  
 ECD\_L  
 ClientSampleId :



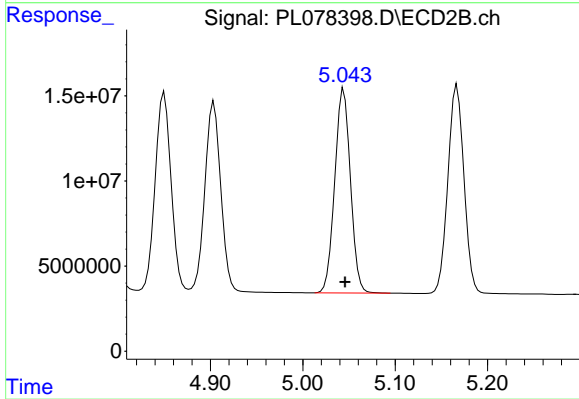
#11 alpha-Chlordane

R.T.: 4.850 min  
 Delta R.T.: -0.002 min  
 Response: 141054874  
 Conc: 48.98 ng/ml



#12 4,4'-DDE

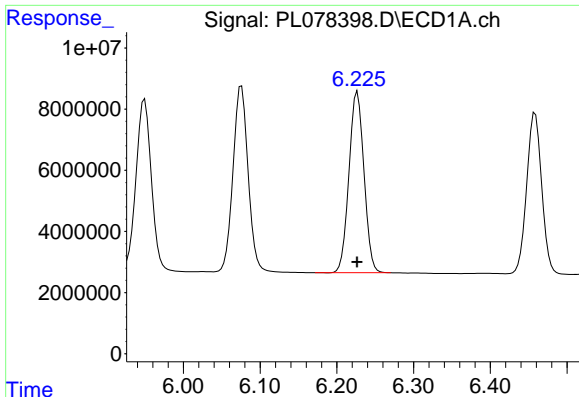
R.T.: 6.076 min  
 Delta R.T.: 0.000 min  
 Response: 82937396  
 Conc: 49.21 ng/ml



#12 4,4'-DDE

R.T.: 5.044 min  
 Delta R.T.: -0.001 min  
 Response: 141757231  
 Conc: 49.59 ng/ml

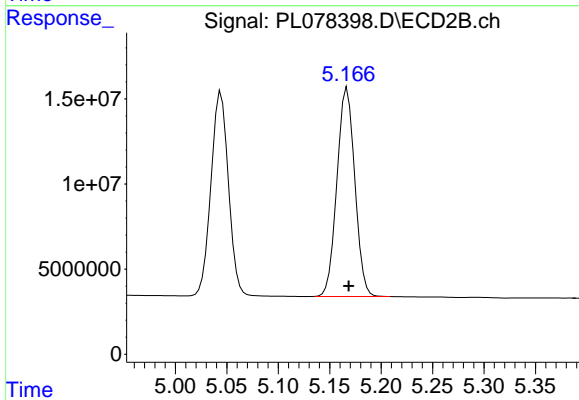




#13 Dieldrin

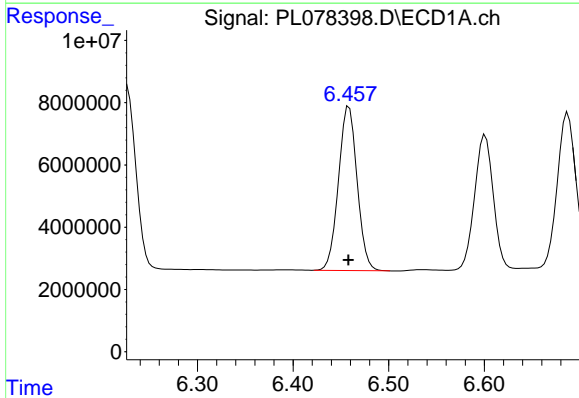
R.T.: 6.227 min  
 Delta R.T.: 0.000 min  
 Response: 81053624  
 Conc: 47.11 ng/ml

Instrument :  
 ECD\_L  
 ClientSampleId :



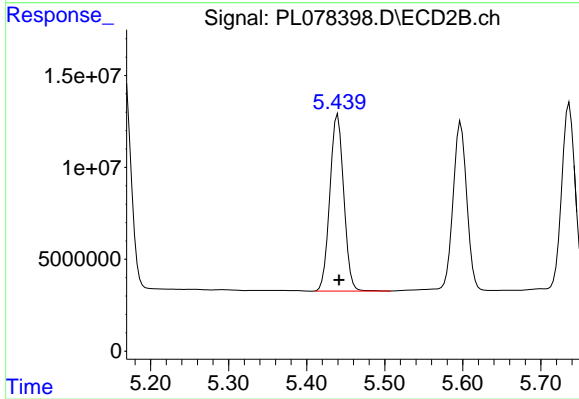
#13 Dieldrin

R.T.: 5.167 min  
 Delta R.T.: -0.002 min  
 Response: 148248510  
 Conc: 50.59 ng/ml



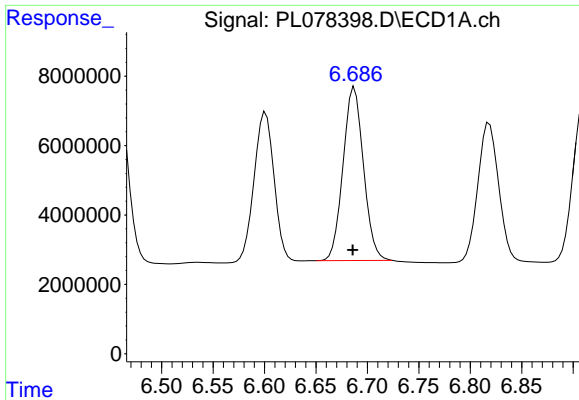
#14 Endrin

R.T.: 6.459 min  
 Delta R.T.: 0.000 min  
 Response: 71586079  
 Conc: 47.97 ng/ml



#14 Endrin

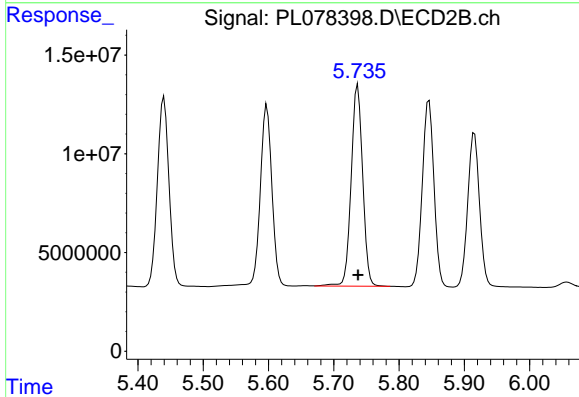
R.T.: 5.440 min  
 Delta R.T.: -0.001 min  
 Response: 118818718  
 Conc: 51.58 ng/ml



#15 Endosulfan II

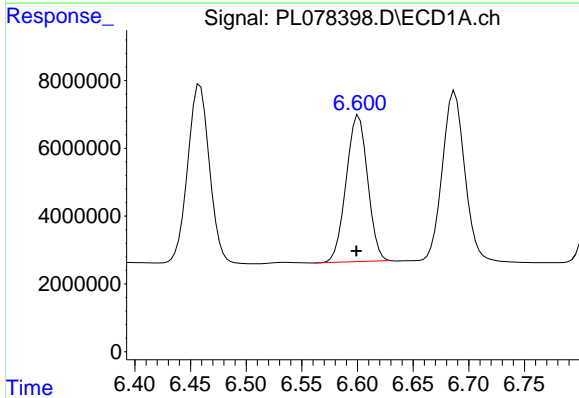
R.T.: 6.687 min  
 Delta R.T.: 0.001 min  
 Response: 69119956  
 Conc: 51.56 ng/ml

Instrument :  
 ECD\_L  
 ClientSampleId :



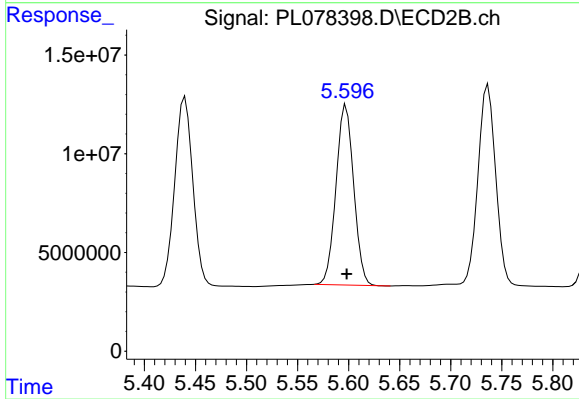
#15 Endosulfan II

R.T.: 5.737 min  
 Delta R.T.: 0.000 min  
 Response: 124967370  
 Conc: 51.05 ng/ml



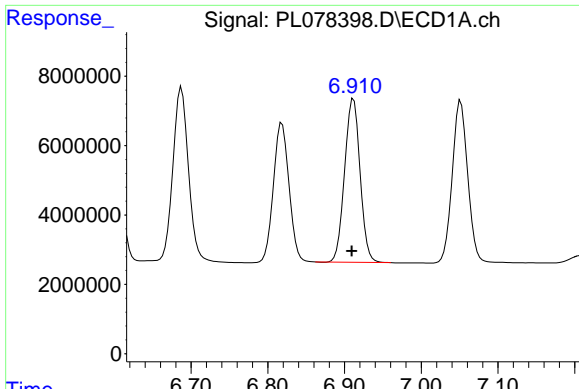
#16 4,4'-DDD

R.T.: 6.601 min  
 Delta R.T.: 0.002 min  
 Response: 58082638  
 Conc: 47.17 ng/ml



#16 4,4'-DDD

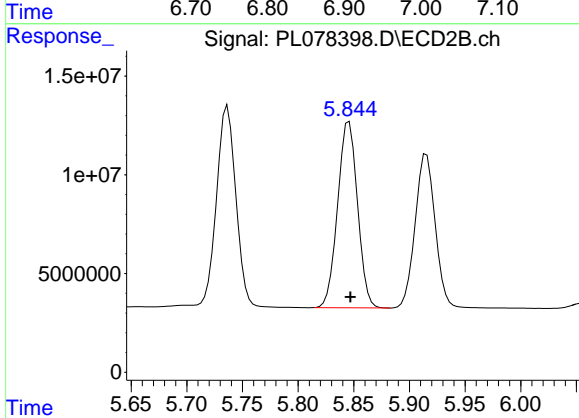
R.T.: 5.598 min  
 Delta R.T.: 0.000 min  
 Response: 110019524  
 Conc: 49.39 ng/ml



#17 4,4'-DDT

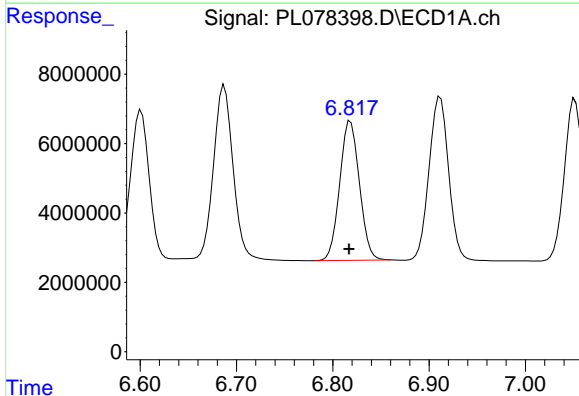
R.T.: 6.912 min  
 Delta R.T.: 0.002 min  
 Response: 66607913  
 Conc: 45.50 ng/ml

Instrument :  
 ECD\_L  
 ClientSampleId :



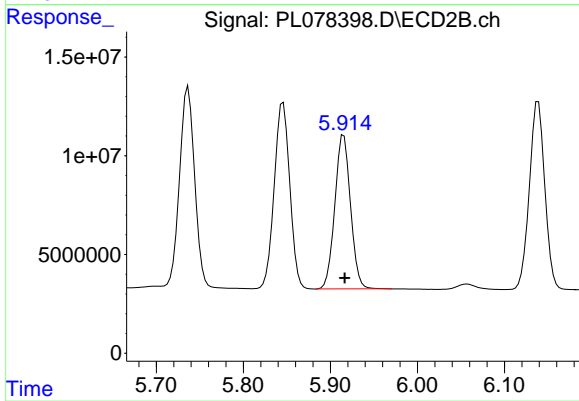
#17 4,4'-DDT

R.T.: 5.846 min  
 Delta R.T.: -0.001 min  
 Response: 117271093  
 Conc: 51.66 ng/ml



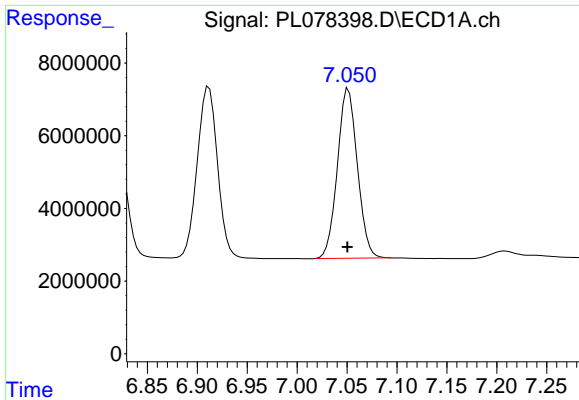
#18 Endrin aldehyde

R.T.: 6.818 min  
 Delta R.T.: 0.001 min  
 Response: 56941020  
 Conc: 49.76 ng/ml



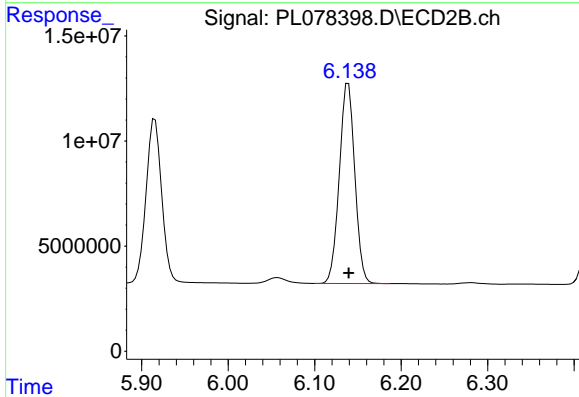
#18 Endrin aldehyde

R.T.: 5.915 min  
 Delta R.T.: -0.001 min  
 Response: 97735777  
 Conc: 52.82 ng/ml

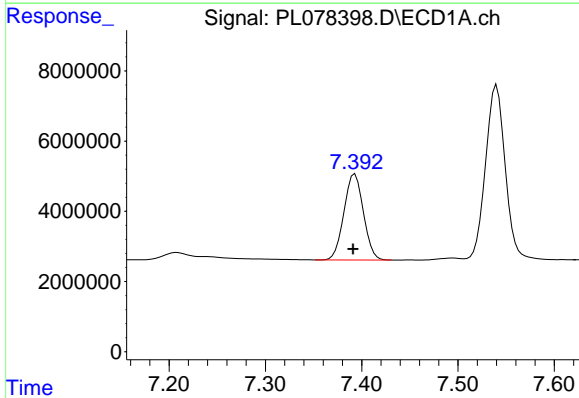


#19 Endosulfan Sulfate  
 R.T.: 7.051 min  
 Delta R.T.: 0.001 min  
 Response: 65083781  
 Conc: 45.63 ng/ml

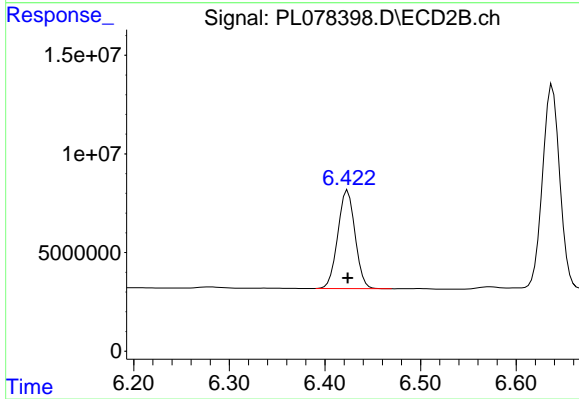
Instrument :  
 ECD\_L  
 ClientSampleId :



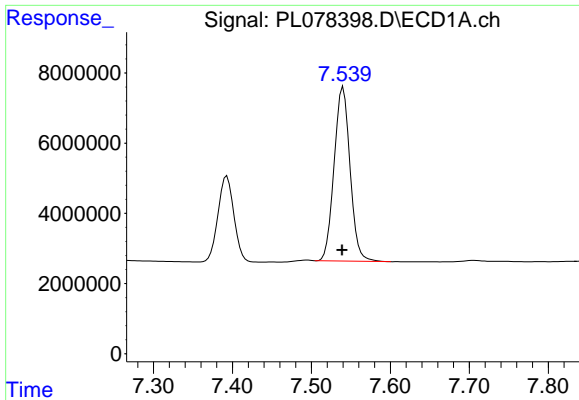
#19 Endosulfan Sulfate  
 R.T.: 6.139 min  
 Delta R.T.: 0.000 min  
 Response: 117653130  
 Conc: 48.88 ng/ml



#20 Methoxychlor  
 R.T.: 7.393 min  
 Delta R.T.: 0.002 min  
 Response: 34219675  
 Conc: 45.16 ng/ml



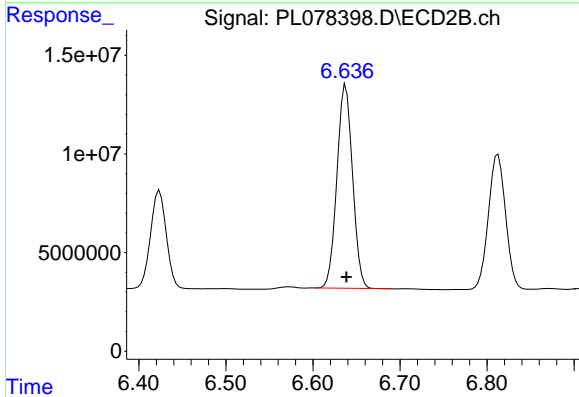
#20 Methoxychlor  
 R.T.: 6.424 min  
 Delta R.T.: 0.000 min  
 Response: 62584930  
 Conc: 49.55 ng/ml



#21 Endrin ketone

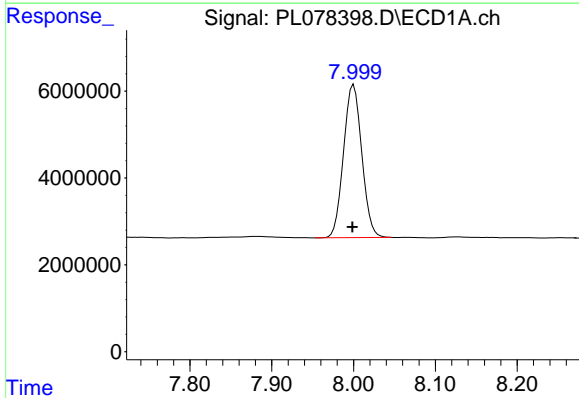
R.T.: 7.540 min  
 Delta R.T.: 0.001 min  
 Response: 69639881  
 Conc: 44.64 ng/ml

Instrument :  
 ECD\_L  
 ClientSampleId :



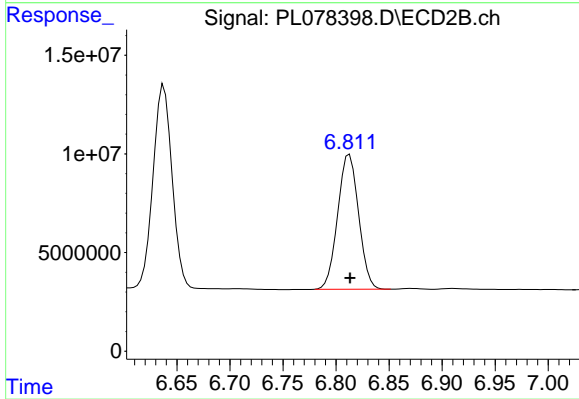
#21 Endrin ketone

R.T.: 6.638 min  
 Delta R.T.: 0.000 min  
 Response: 128718570  
 Conc: 48.58 ng/ml



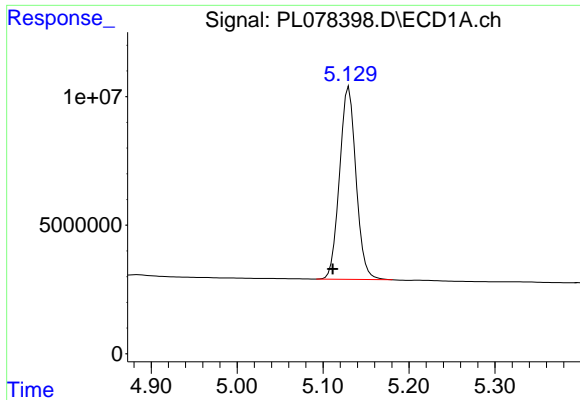
#22 Mirex

R.T.: 8.000 min  
 Delta R.T.: 0.002 min  
 Response: 54303702  
 Conc: 45.98 ng/ml



#22 Mirex

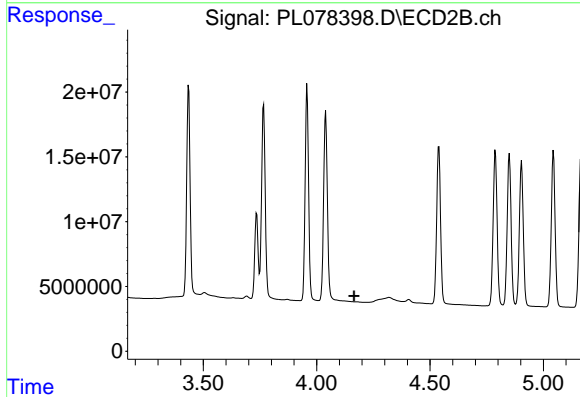
R.T.: 6.813 min  
 Delta R.T.: 0.000 min  
 Response: 93672806  
 Conc: 48.69 ng/ml



#24 Chlordane-2

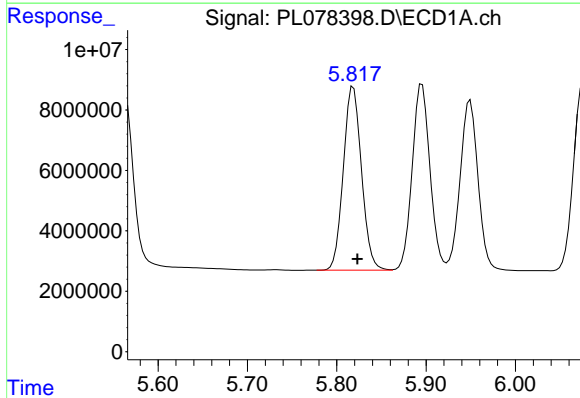
R.T.: 5.130 min  
 Delta R.T.: 0.019 min  
 Response: 99683101  
 Conc: 1415.28 ng/m

Instrument :  
 ECD\_L  
 ClientSampleId :



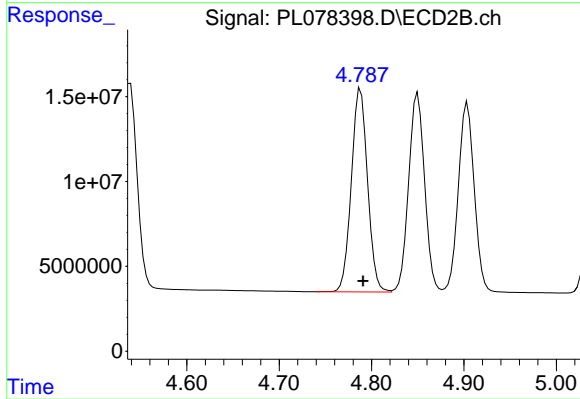
#24 Chlordane-2

R.T.: 0.000 min  
 Exp R.T. : 4.165 min  
 Response: 0  
 Conc: N.D.



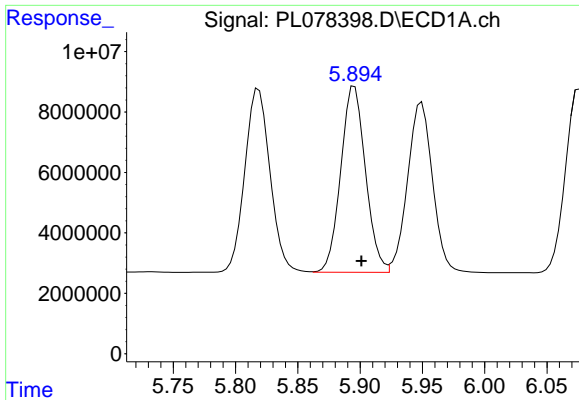
#25 Chlordane-3

R.T.: 5.819 min  
 Delta R.T.: -0.005 min  
 Response: 85933309  
 Conc: 330.54 ng/ml



#25 Chlordane-3

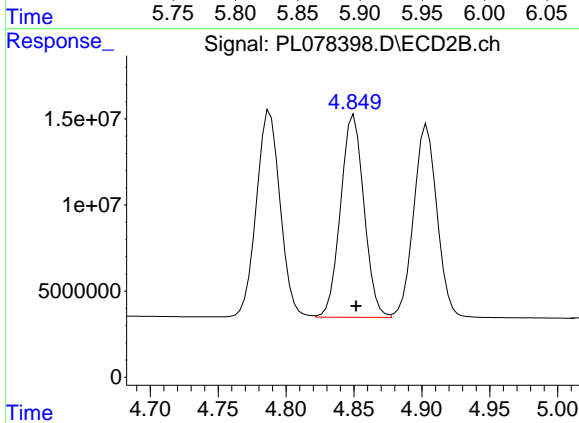
R.T.: 4.788 min  
 Delta R.T.: -0.003 min  
 Response: 145998283  
 Conc: 477.18 ng/ml



#26 Chlordane-4

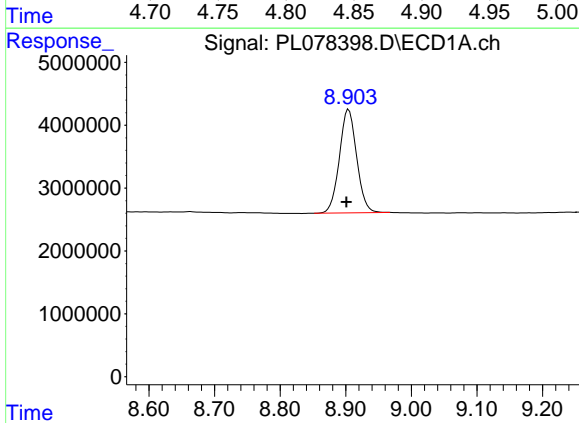
R.T.: 5.895 min  
 Delta R.T.: -0.006 min  
 Response: 85410352  
 Conc: 267.43 ng/ml

Instrument :  
 ECD\_L  
 ClientSampleId :



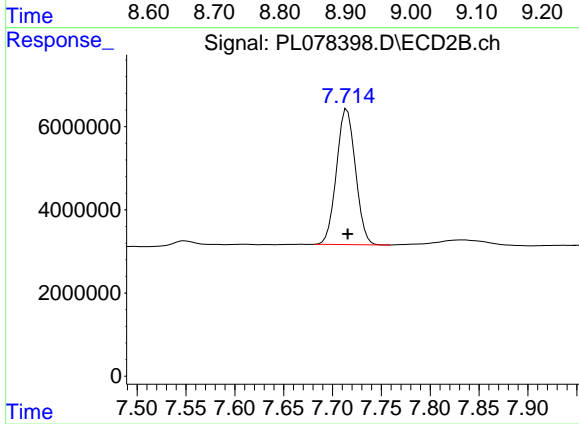
#26 Chlordane-4

R.T.: 4.850 min  
 Delta R.T.: -0.002 min  
 Response: 141054874  
 Conc: 436.82 ng/ml



#28 Decachlorobiphenyl

R.T.: 8.905 min  
 Delta R.T.: 0.004 min  
 Response: 30071880  
 Conc: 19.48 ng/ml



#28 Decachlorobiphenyl

R.T.: 7.715 min  
 Delta R.T.: 0.000 min  
 Response: 44122439  
 Conc: 20.30 ng/ml