

Data Path : Z:\pestpcbsrv\HPCHEM1\ECD_L\Data\PL101724\
 Data File : PL092448.D
 Signal(s) : Signal #1: ECD1A.ch Signal #2: ECD2B.ch
 Acq On : 17 Oct 2024 17:10
 Operator : AR\AJ
 Sample : P4422-01
 Misc :
 ALS Vial : 19 Sample Multiplier: 1

Instrument :
 ECD_L
 ClientSampleId :
 EO-01-101624

Integration File signal 1: autoint1.e
 Integration File signal 2: autoint2.e
 Quant Time: Oct 18 03:47:34 2024
 Quant Method : Z:\pestpcbsrv\HPCHEM1\ECD_L\methods\PL092324.M
 Quant Title : GC Extractables
 QLast Update : Mon Sep 23 16:44:57 2024
 Response via : Initial Calibration
 Integrator: ChemStation

Volume Inj. : 1 µl
 Signal #1 Phase : ZB-MR2 Signal #2 Phase: ZB-MR1
 Signal #1 Info : 30M x 0.32mm x0.2 Signal #2 Info : 30M x 0.32mm x0.5µm

	Compound	RT#1	RT#2	Resp#1	Resp#2	ng/ml	ng/ml

System Monitoring Compounds							
1)	SA Tetrachlo...	3.541	2.780	25818624	28748155	11.606	11.462
28)	SA Decachlor...	9.057	7.919	18948827	23417372	11.567	9.360
Target Compounds							
4)	MA Heptachlor	4.945f	3.952	5162925	296970	1.867	0.086 #
5)	MB Aldrin	0.000	4.245	0	493098	N.D.	0.145 #
6)	B beta-BHC	0.000	3.921	0	352334	N.D.	0.234 #
7)	B delta-BHC	0.000	4.133	0	712958	N.D.	0.205 #
8)	B Heptachlo...	5.674	4.736	2522705	1024755	0.991	0.339 #
10)	B gamma-Chl...	5.942	4.985	27019465	15274661	10.934	5.077 #
11)	B alpha-Chl...	6.024	5.047	48766282	29677733	19.797	9.914 #
12)	B 4,4'-DDE	6.194	5.237	94943046	125.7E6	43.865	45.224
13)	MA Dieldrin	0.000	5.370	0	33846	N.D.	0.012 #
14)	MA Endrin	0.000	5.653	0	3281377	N.D.	1.251 #
15)	B Endosulfa...	0.000	5.943	0	4239207	N.D.	1.694 #
16)	A 4,4'-DDD	6.712	5.791	5646037	6445952	3.144	3.017
17)	MA 4,4'-DDT	7.025	6.041	17801503	16445250	9.668	7.109 #
18)	B Endrin al...	0.000	6.137f	0	321667	N.D.	0.158 #
19)	B Endosulfa...	0.000	6.336	0	428408	N.D.	0.178 #
21)	B Endrin ke...	0.000	6.877f	0	620717	N.D.	0.224 #
22)	Mirex	0.000	7.028	0	51786	N.D.	0.021 #
23)	Chlordane-1	4.702	3.777	6584255	7412655	64.240	74.141
24)	Chlordane-2	5.228	4.358	6492031	6924443	60.534	61.701
25)	Chlordane-3	5.942	4.985	27019465	15274661	72.133	46.115 #
26)	Chlordane-4	6.024	5.047	48766282	29677733	107.688	93.537
27)	Chlordane-5	6.873	5.943	4775568	4239207	54.756	39.089 #

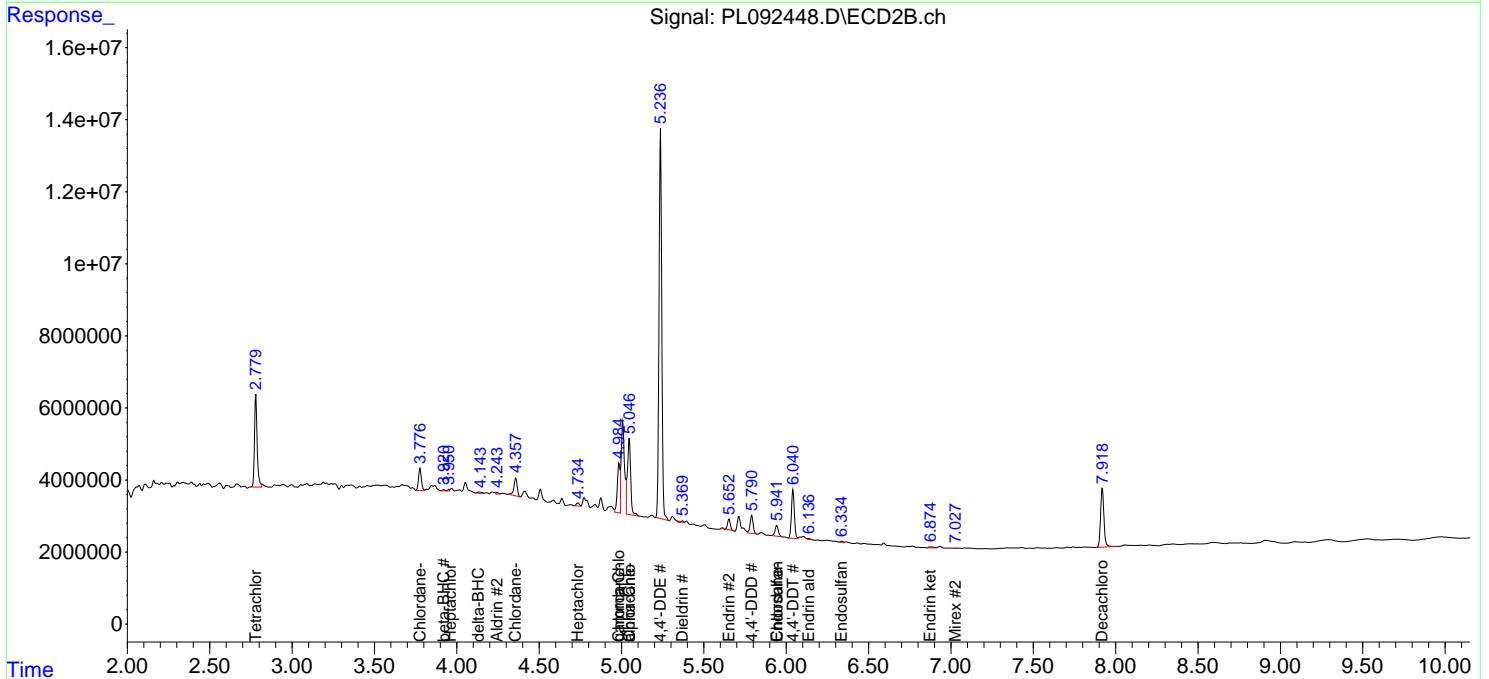
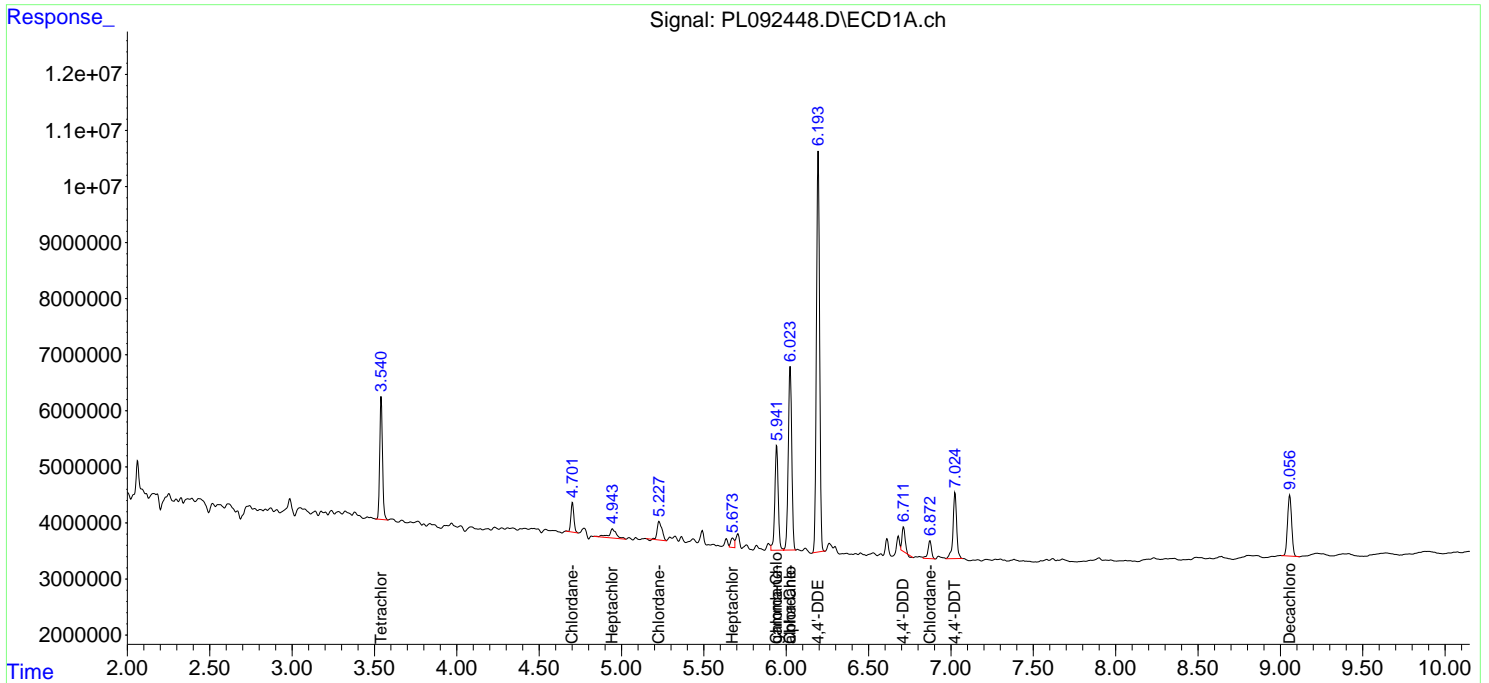
(f)=RT Delta > 1/2 Window (#)=Amounts differ by > 25% (m)=manual int.

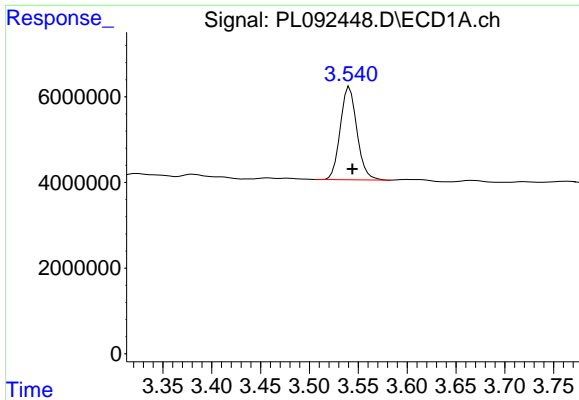
Data Path : Z:\pestpcbsrv\HPCHEM1\ECD_L\Data\PL101724\
 Data File : PL092448.D
 Signal(s) : Signal #1: ECD1A.ch Signal #2: ECD2B.ch
 Acq On : 17 Oct 2024 17:10
 Operator : AR\AJ
 Sample : P4422-01
 Misc :
 ALS Vial : 19 Sample Multiplier: 1

Instrument :
 ECD_L
 ClientSampleId :
 EO-01-101624

Integration File signal 1: autoint1.e
 Integration File signal 2: autoint2.e
 Quant Time: Oct 18 03:47:34 2024
 Quant Method : Z:\pestpcbsrv\HPCHEM1\ECD_L\methods\PL092324.M
 Quant Title : GC Extractables
 QLast Update : Mon Sep 23 16:44:57 2024
 Response via : Initial Calibration
 Integrator: ChemStation

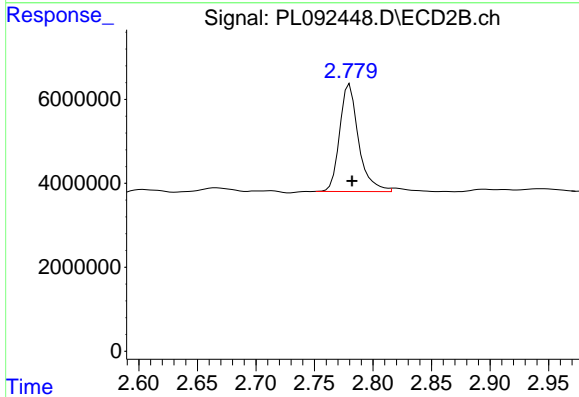
Volume Inj. : 1 µl
 Signal #1 Phase : ZB-MR2 Signal #2 Phase: ZB-MR1
 Signal #1 Info : 30M x 0.32mm x0.2 Signal #2 Info : 30M x 0.32mm x0.5µm



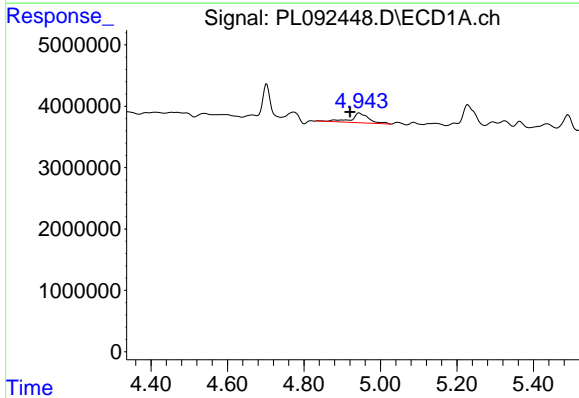


#1 Tetrachloro-m-xylene
 R.T.: 3.541 min
 Delta R.T.: -0.003 min
 Response: 25818624
 Conc: 11.61 ng/ml

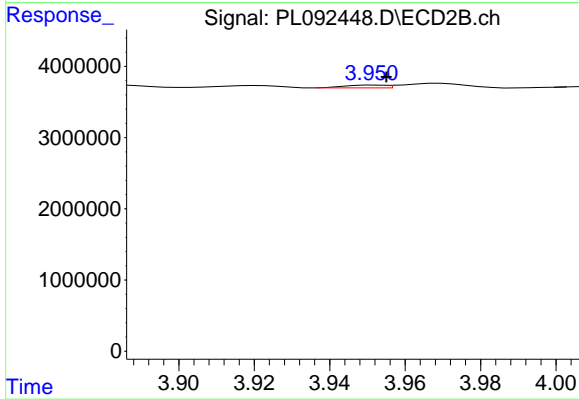
Instrument :
 ECD_L
 ClientSampleId :
 EO-01-101624



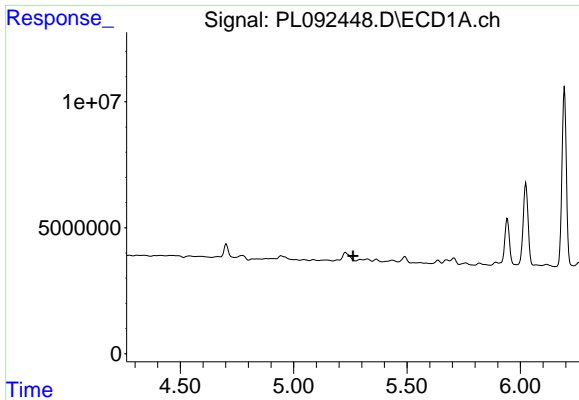
#1 Tetrachloro-m-xylene
 R.T.: 2.780 min
 Delta R.T.: -0.002 min
 Response: 28748155
 Conc: 11.46 ng/ml



#4 Heptachlor
 R.T.: 4.945 min
 Delta R.T.: 0.024 min
 Response: 5162925
 Conc: 1.87 ng/ml

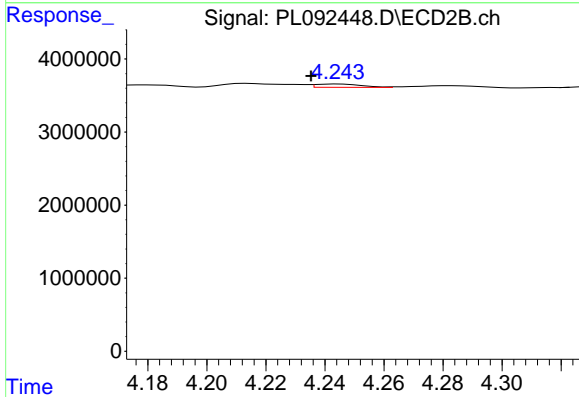


#4 Heptachlor
 R.T.: 3.952 min
 Delta R.T.: -0.003 min
 Response: 296970
 Conc: 0.09 ng/ml

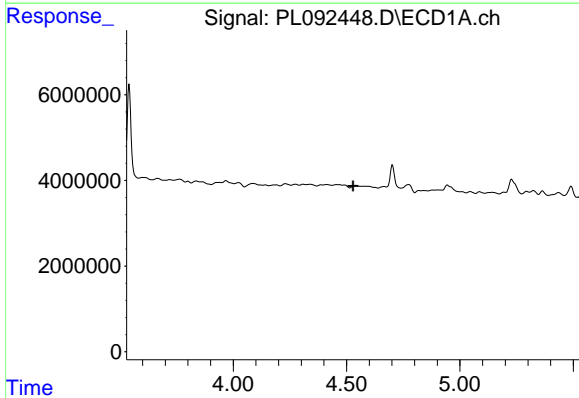


#5 Aldrin
 R.T.: 0.000 min
 Exp R.T.: 5.263 min
 Response: 0
 Conc: N.D.

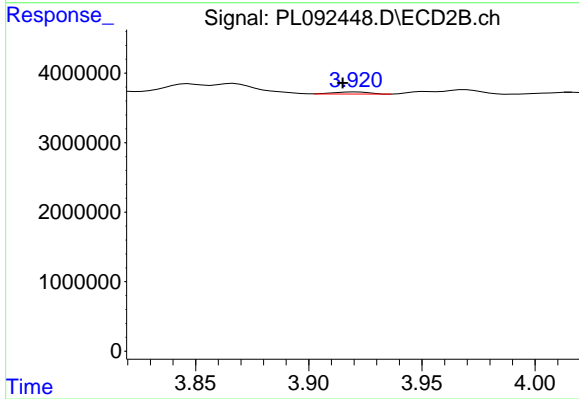
Instrument :
 ECD_L
 ClientSampleId :
 EO-01-101624



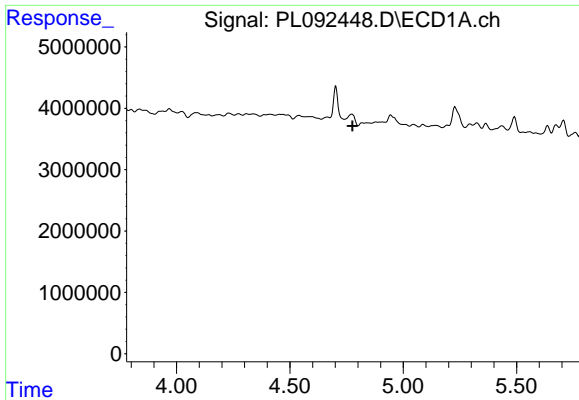
#5 Aldrin
 R.T.: 4.245 min
 Delta R.T.: 0.010 min
 Response: 493098
 Conc: 0.14 ng/ml



#6 beta-BHC
 R.T.: 0.000 min
 Exp R.T.: 4.529 min
 Response: 0
 Conc: N.D.



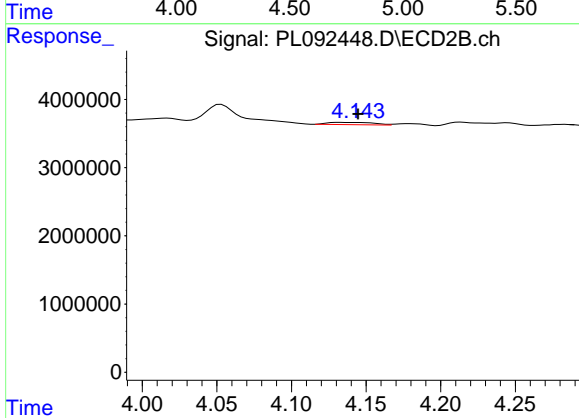
#6 beta-BHC
 R.T.: 3.921 min
 Delta R.T.: 0.006 min
 Response: 352334
 Conc: 0.23 ng/ml



#7 delta-BHC

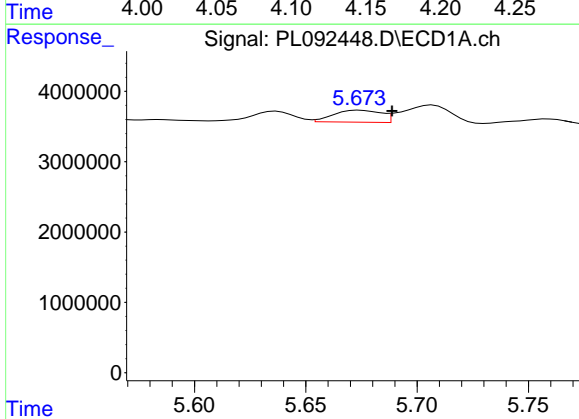
R.T.: 0.000 min
 Exp R.T.: 4.777 min
 Response: 0
 Conc: N.D.

Instrument :
 ECD_L
 ClientSampleId :
 EO-01-101624



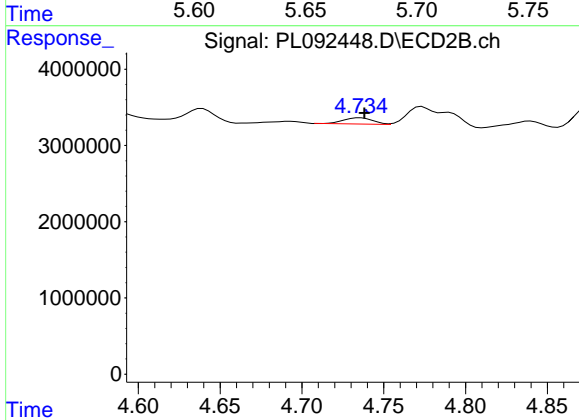
#7 delta-BHC

R.T.: 4.133 min
 Delta R.T.: -0.012 min
 Response: 712958
 Conc: 0.21 ng/ml



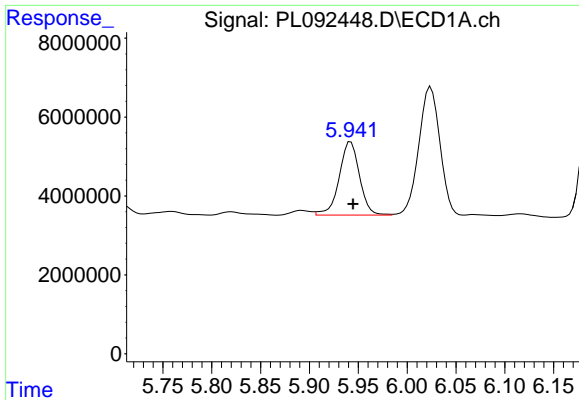
#8 Heptachlor epoxide

R.T.: 5.674 min
 Delta R.T.: -0.014 min
 Response: 2522705
 Conc: 0.99 ng/ml



#8 Heptachlor epoxide

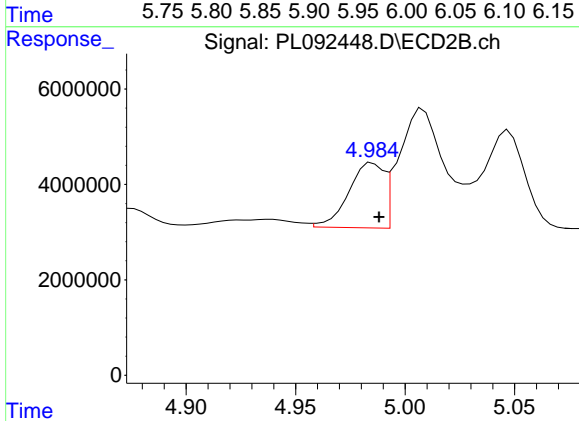
R.T.: 4.736 min
 Delta R.T.: -0.003 min
 Response: 1024755
 Conc: 0.34 ng/ml



#10 gamma-Chlordane

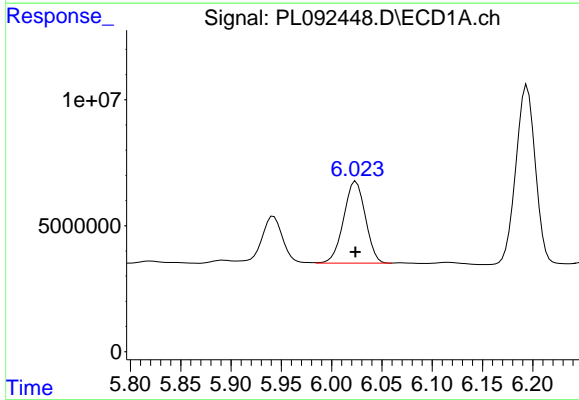
R.T.: 5.942 min
 Delta R.T.: -0.002 min
 Response: 27019465
 Conc: 10.93 ng/ml

Instrument :
 ECD_L
 ClientSampleId :
 EO-01-101624



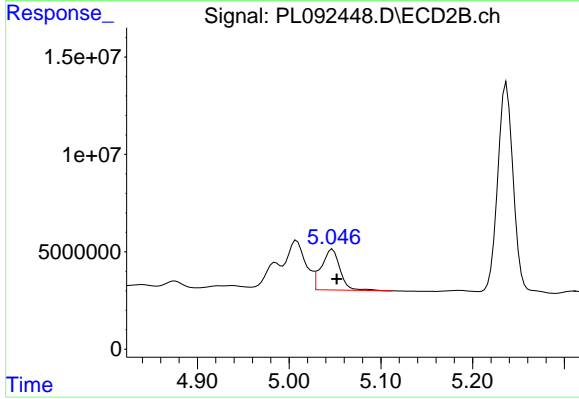
#10 gamma-Chlordane

R.T.: 4.985 min
 Delta R.T.: -0.003 min
 Response: 15274661
 Conc: 5.08 ng/ml



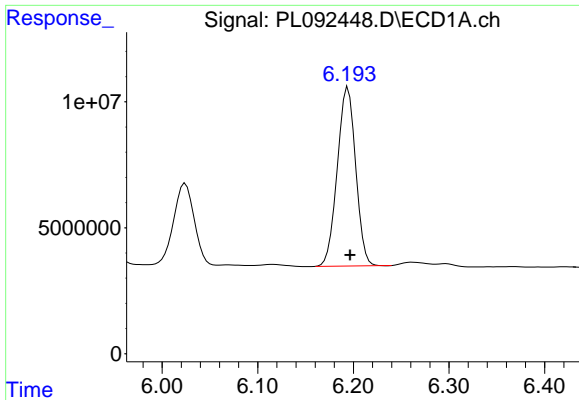
#11 alpha-Chlordane

R.T.: 6.024 min
 Delta R.T.: 0.000 min
 Response: 48766282
 Conc: 19.80 ng/ml



#11 alpha-Chlordane

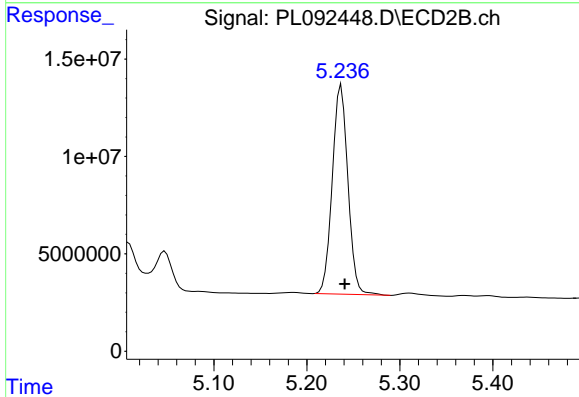
R.T.: 5.047 min
 Delta R.T.: -0.005 min
 Response: 29677733
 Conc: 9.91 ng/ml



#12 4,4'-DDE

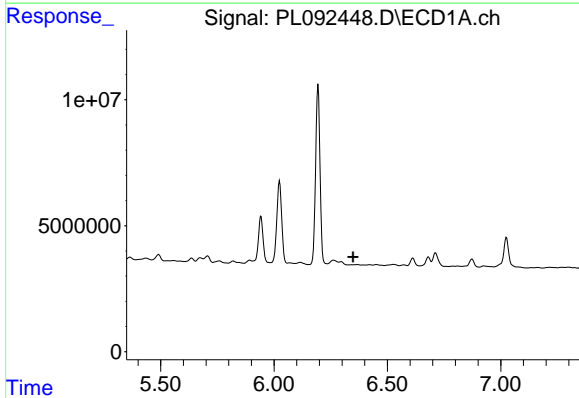
R.T.: 6.194 min
 Delta R.T.: -0.002 min
 Response: 94943046
 Conc: 43.87 ng/ml

Instrument :
 ECD_L
 ClientSampleId :
 EO-01-101624



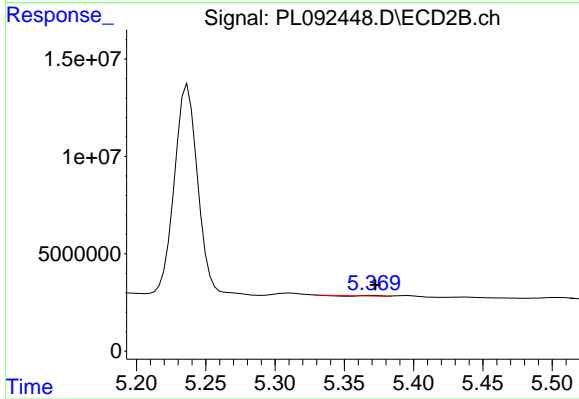
#12 4,4'-DDE

R.T.: 5.237 min
 Delta R.T.: -0.004 min
 Response: 125671255
 Conc: 45.22 ng/ml



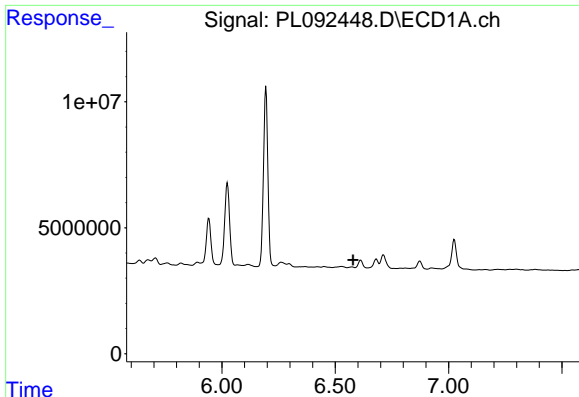
#13 Dieldrin

R.T.: 0.000 min
 Exp R.T. : 6.349 min
 Response: 0
 Conc: N.D.



#13 Dieldrin

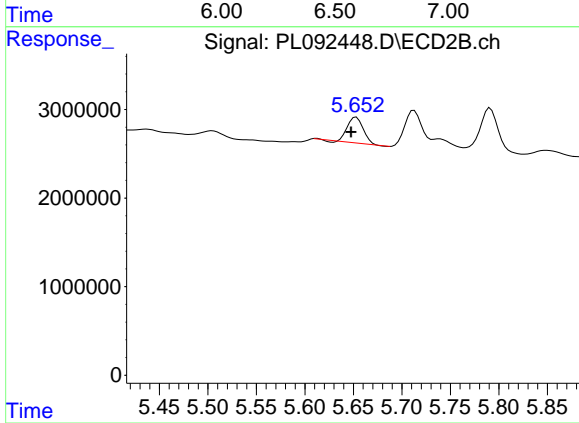
R.T.: 5.370 min
 Delta R.T.: -0.002 min
 Response: 33846
 Conc: 0.01 ng/ml



#14 Endrin

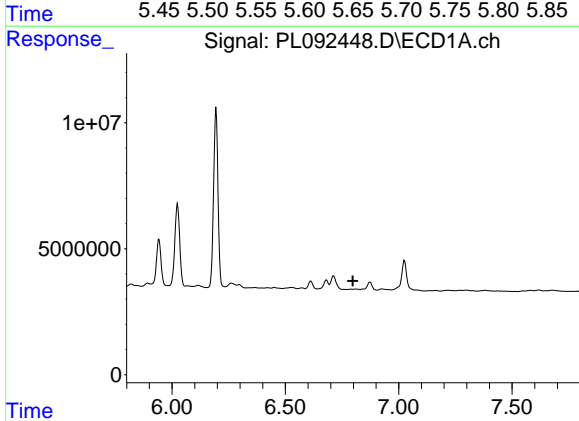
R.T.: 0.000 min
 Exp R.T.: 6.579 min
 Response: 0
 Conc: N.D.

Instrument :
 ECD_L
 ClientSampleId :
 EO-01-101624



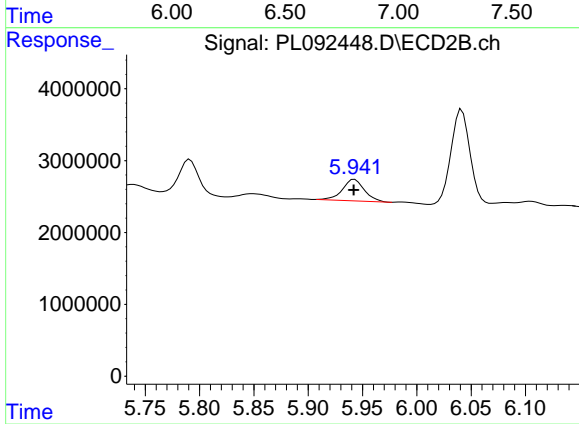
#14 Endrin

R.T.: 5.653 min
 Delta R.T.: 0.005 min
 Response: 3281377
 Conc: 1.25 ng/ml



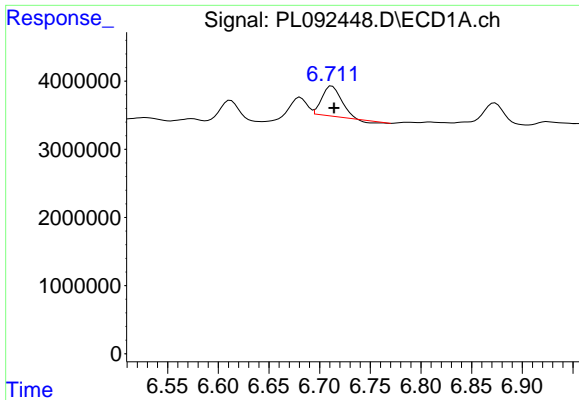
#15 Endosulfan II

R.T.: 0.000 min
 Exp R.T.: 6.798 min
 Response: 0
 Conc: N.D.



#15 Endosulfan II

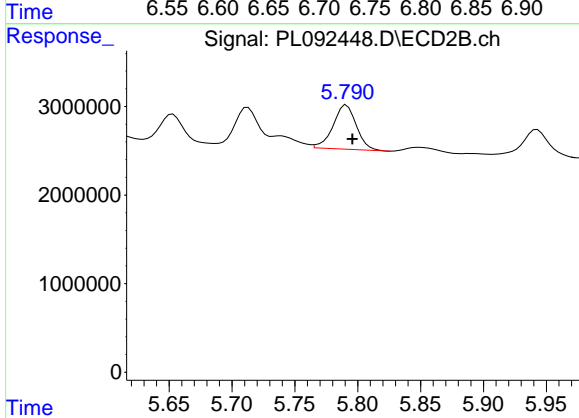
R.T.: 5.943 min
 Delta R.T.: 0.000 min
 Response: 4239207
 Conc: 1.69 ng/ml



#16 4,4'-DDD

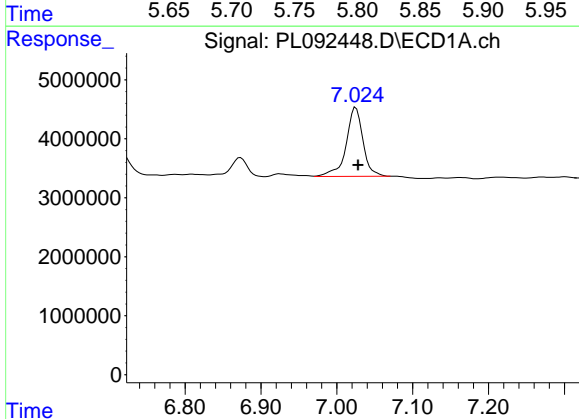
R.T.: 6.712 min
 Delta R.T.: -0.002 min
 Response: 5646037
 Conc: 3.14 ng/ml

Instrument :
 ECD_L
 ClientSampleId :
 EO-01-101624



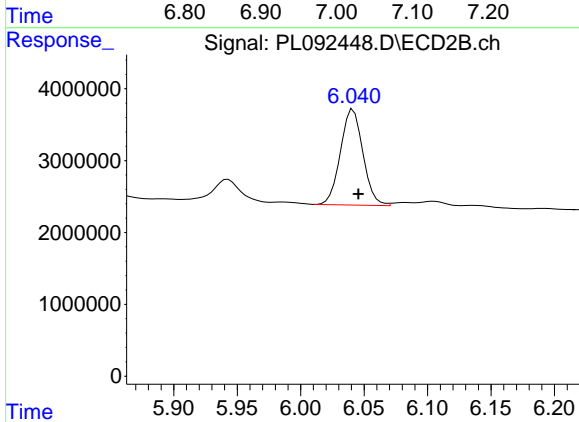
#16 4,4'-DDD

R.T.: 5.791 min
 Delta R.T.: -0.005 min
 Response: 6445952
 Conc: 3.02 ng/ml



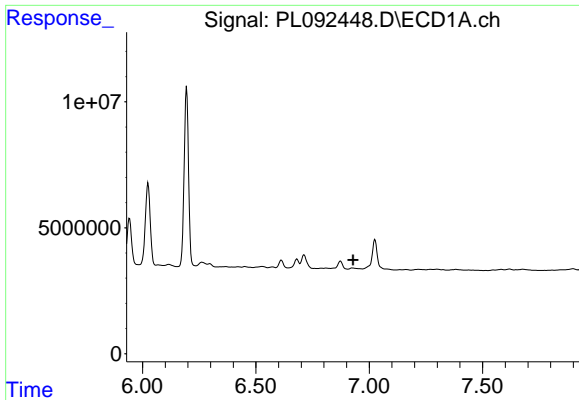
#17 4,4'-DDT

R.T.: 7.025 min
 Delta R.T.: -0.003 min
 Response: 17801503
 Conc: 9.67 ng/ml



#17 4,4'-DDT

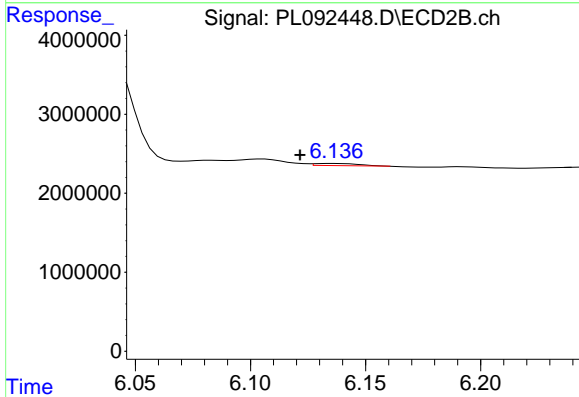
R.T.: 6.041 min
 Delta R.T.: -0.004 min
 Response: 16445250
 Conc: 7.11 ng/ml



#18 Endrin aldehyde

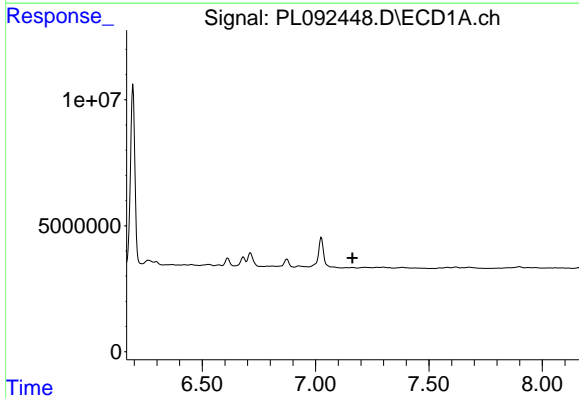
R.T.: 0.000 min
 Exp R.T.: 6.928 min
 Response: 0
 Conc: N.D.

Instrument :
 ECD_L
 ClientSampleId :
 EO-01-101624



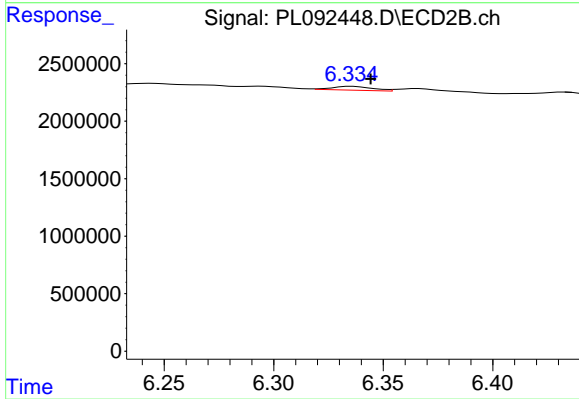
#18 Endrin aldehyde

R.T.: 6.137 min
 Delta R.T.: 0.015 min
 Response: 321667
 Conc: 0.16 ng/ml



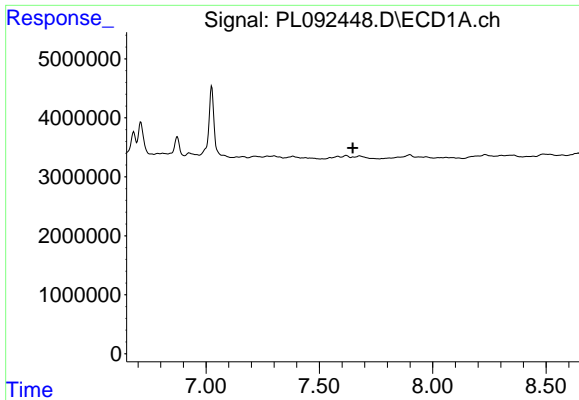
#19 Endosulfan Sulfate

R.T.: 0.000 min
 Exp R.T.: 7.163 min
 Response: 0
 Conc: N.D.



#19 Endosulfan Sulfate

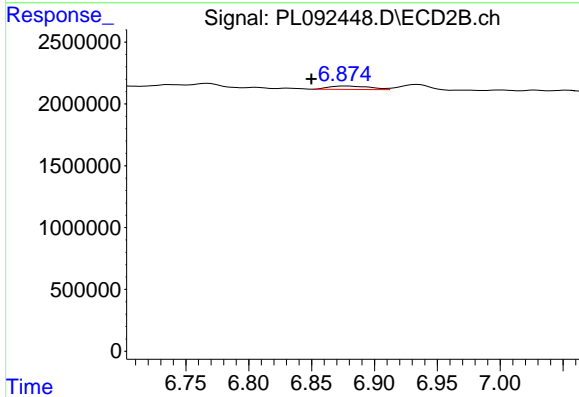
R.T.: 6.336 min
 Delta R.T.: -0.008 min
 Response: 428408
 Conc: 0.18 ng/ml



#21 Endrin ketone

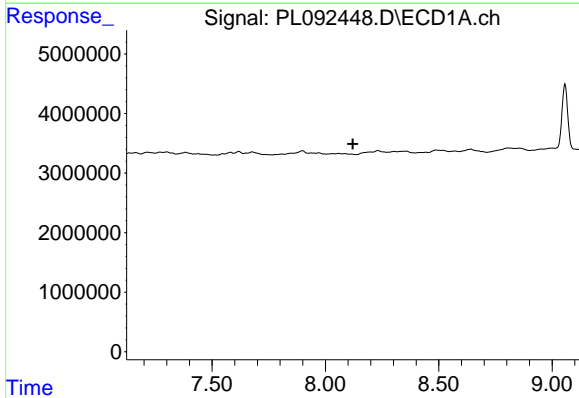
R.T.: 0.000 min
 Exp R.T.: 7.648 min
 Response: 0
 Conc: N.D.

Instrument :
 ECD_L
 ClientSampleId :
 EO-01-101624



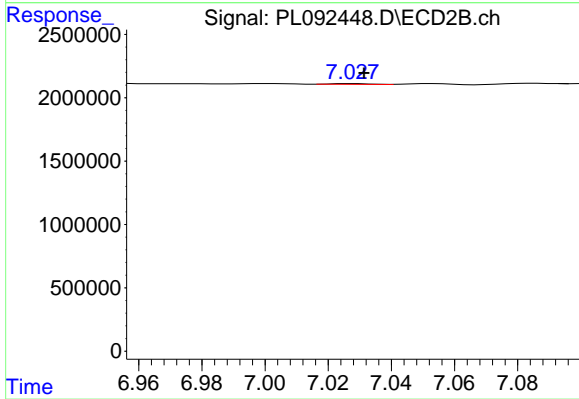
#21 Endrin ketone

R.T.: 6.877 min
 Delta R.T.: 0.027 min
 Response: 620717
 Conc: 0.22 ng/ml



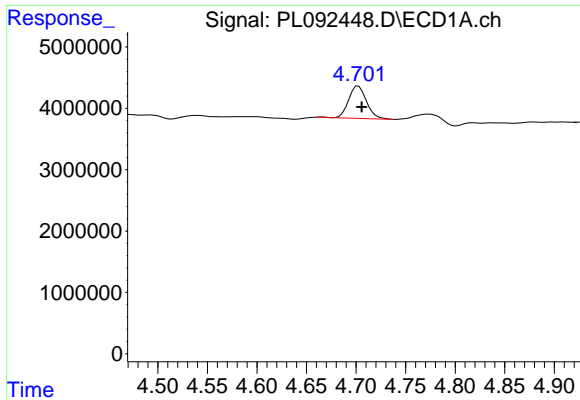
#22 Mirex

R.T.: 0.000 min
 Exp R.T.: 8.121 min
 Response: 0
 Conc: N.D.



#22 Mirex

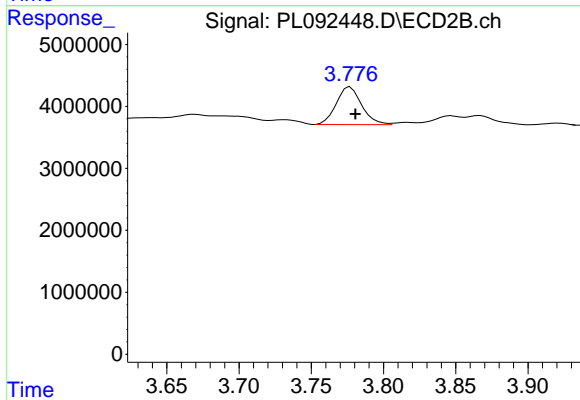
R.T.: 7.028 min
 Delta R.T.: -0.003 min
 Response: 51786
 Conc: 0.02 ng/ml



#23 Chlordane-1

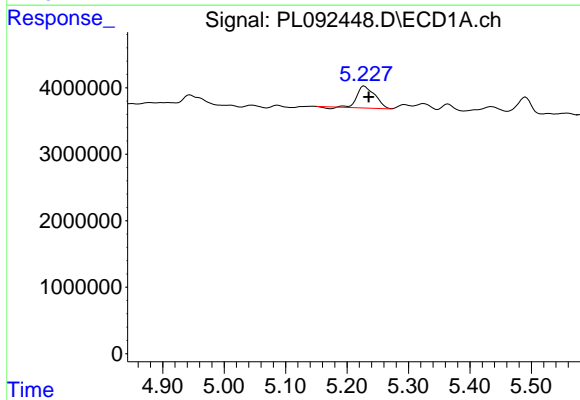
R.T.: 4.702 min
 Delta R.T.: -0.003 min
 Response: 6584255
 Conc: 64.24 ng/ml

Instrument :
 ECD_L
 ClientSampleId :
 EO-01-101624



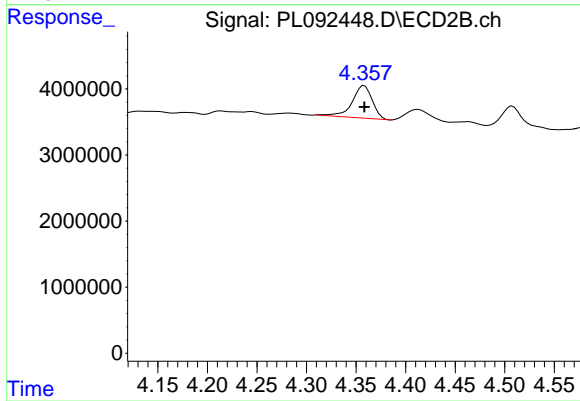
#23 Chlordane-1

R.T.: 3.777 min
 Delta R.T.: -0.004 min
 Response: 7412655
 Conc: 74.14 ng/ml



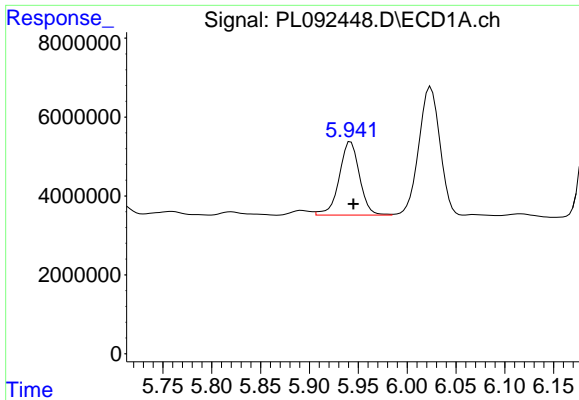
#24 Chlordane-2

R.T.: 5.228 min
 Delta R.T.: -0.007 min
 Response: 6492031
 Conc: 60.53 ng/ml



#24 Chlordane-2

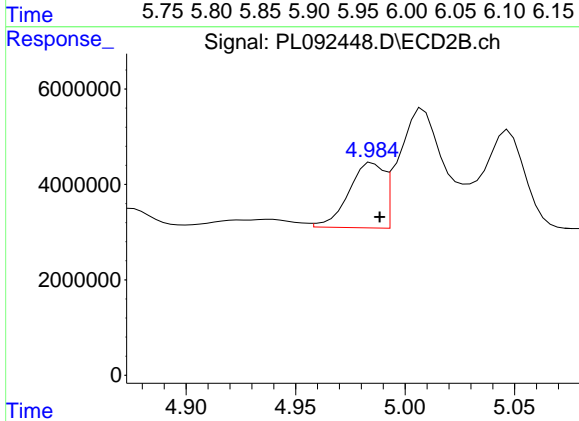
R.T.: 4.358 min
 Delta R.T.: 0.000 min
 Response: 6924443
 Conc: 61.70 ng/ml



#25 Chlordane-3

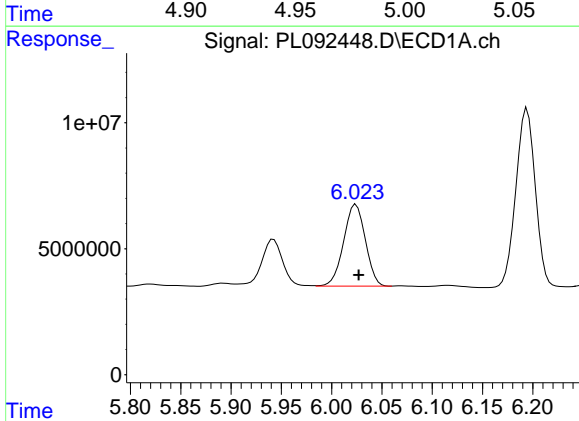
R.T.: 5.942 min
 Delta R.T.: -0.003 min
 Response: 27019465
 Conc: 72.13 ng/ml

Instrument :
 ECD_L
 ClientSampleId :
 EO-01-101624



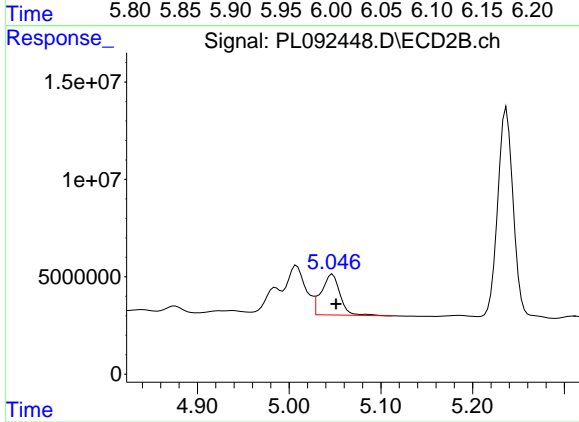
#25 Chlordane-3

R.T.: 4.985 min
 Delta R.T.: -0.003 min
 Response: 15274661
 Conc: 46.12 ng/ml



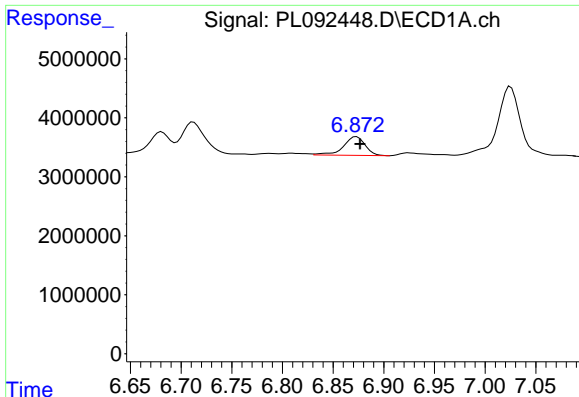
#26 Chlordane-4

R.T.: 6.024 min
 Delta R.T.: -0.003 min
 Response: 48766282
 Conc: 107.69 ng/ml



#26 Chlordane-4

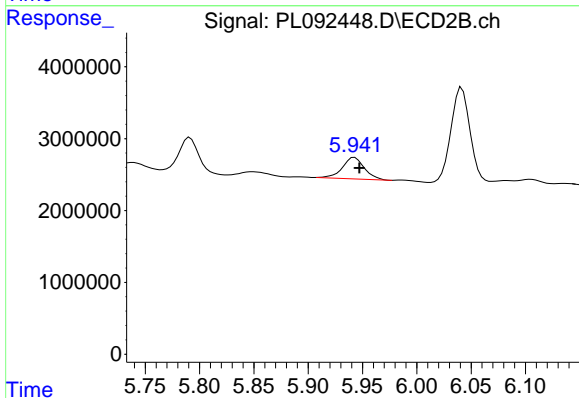
R.T.: 5.047 min
 Delta R.T.: -0.004 min
 Response: 29677733
 Conc: 93.54 ng/ml



#27 Chlordane-5

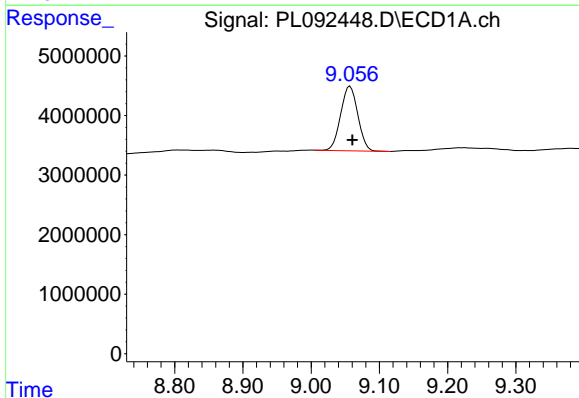
R.T.: 6.873 min
 Delta R.T.: -0.003 min
 Response: 4775568
 Conc: 54.76 ng/ml

Instrument :
 ECD_L
 ClientSampleId :
 EO-01-101624



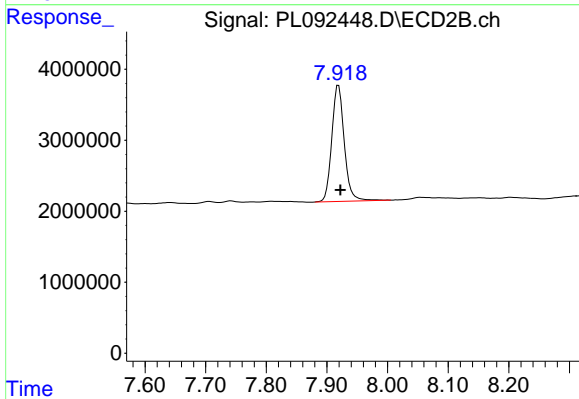
#27 Chlordane-5

R.T.: 5.943 min
 Delta R.T.: -0.004 min
 Response: 4239207
 Conc: 39.09 ng/ml



#28 Decachlorobiphenyl

R.T.: 9.057 min
 Delta R.T.: -0.003 min
 Response: 18948827
 Conc: 11.57 ng/ml



#28 Decachlorobiphenyl

R.T.: 7.919 min
 Delta R.T.: -0.003 min
 Response: 23417372
 Conc: 9.36 ng/ml