

Data Path : Z:\pestpcbsrv\HPCHEM1\ECD_L\Data\PL101818\
 Data File : PL041131.D
 Signal(s) : Signal #1: ECD1A.ch Signal #2: ECD2B.ch
 Acq On : 18 Oct 2018 20:44
 Operator : AJ\SJ
 Sample : J5549-01MS
 Misc :
 ALS Vial : 35 Sample Multiplier: 1

Instrument :
 ECD_L
ClientSampleId :
 CB-1018-S-TCLP-GRID-45MS

Manual Integrations
APPROVED
 Sohil
 10/19/2018 5:39:27 PM

Integration File signal 1: autoint1.e
 Integration File signal 2: autoint2.e
 Quant Time: Oct 19 00:56:00 2018
 Quant Method : Z:\pestpcbsrv\HPCHEM1\ECD_L\methods\PL101118.M
 Quant Title : GC Extractables
 QLast Update : Thu Oct 11 03:28:36 2018
 Response via : Initial Calibration
 Integrator: ChemStation

Volume Inj. : 2 µl
 Signal #1 Phase : ZB-MR1 Signal #2 Phase: ZB-MR2
 Signal #1 Info : 30M x 0.32mm x0.5 Signal #2 Info : 30M x 0.32mm x0.25µm

Compound	RT#1	RT#2	Resp#1	Resp#2	ng/ml	ng/ml

System Monitoring Compounds						
1) SA Tetrachlo...	3.477	4.103	113.6E6	62471813	20.732	22.405
28) SA Decachlor...	8.223	9.232	130.1E6	56432097	25.013	21.823
Target Compounds						
2) A alpha-BHC	3.917	4.497	486.7E6	236.0E6	61.430	60.990m
3) MA gamma-BHC...	4.201	4.787	447.3E6	218.6E6	61.261	61.403
4) MA Heptachlor	4.498	5.303	435.0E6	200.3E6	59.035	59.175
5) MB Aldrin	4.745	5.612	426.0E6	193.3E6	62.057	64.046
6) B beta-BHC	4.453	4.955	185.4E6	96986410	58.420	60.514
7) B delta-BHC	4.656	5.176	323.0E6	161.8E6	48.478	49.297
8) B Heptachlo...	5.189	5.999	400.1E6	176.4E6	61.006	61.487
9) A Endosulfan I	5.526	6.359	362.1E6	157.3E6	60.437	61.410
10) B gamma-Chl...	5.413	6.234	398.2E6	171.8E6	60.556m	61.246
11) B alpha-Chl...	5.472	6.308	383.4E6	168.1E6	58.924	60.549
12) B 4,4'-DDE	5.639	6.462	355.2E6	163.6E6	62.499	61.849
13) MA Dieldrin	5.770	6.617	396.1E6	165.8E6	62.658	62.271
14) MA Endrin	6.026	6.837	309.6E6	118.3E6	53.899	53.007
15) B Endosulfa...	6.300	7.045	330.5E6	140.9E6	58.972	59.345
16) A 4,4'-DDD	6.155	6.953	295.3E6	132.8E6	65.371	63.396
17) MA 4,4'-DDT	6.392	7.253	251.4E6	109.7E6	55.189m	52.752
18) B Endrin al...	6.468	7.169	268.5E6	119.6E6	64.031m	60.263
19) B Endosulfa...	6.681	7.392	308.0E6	134.1E6	60.538	60.012
20) A Methoxychlor	6.940	7.709	135.5E6	58643837	52.086m	49.818
21) B Endrin ke...	7.172	7.866	370.8E6	151.9E6	70.831	64.604

Sohil

10/19/2018 5:39:27 PM

(f)=RT Delta > 1/2 Window (#)=Amounts differ by > 25% (m)=manual int.

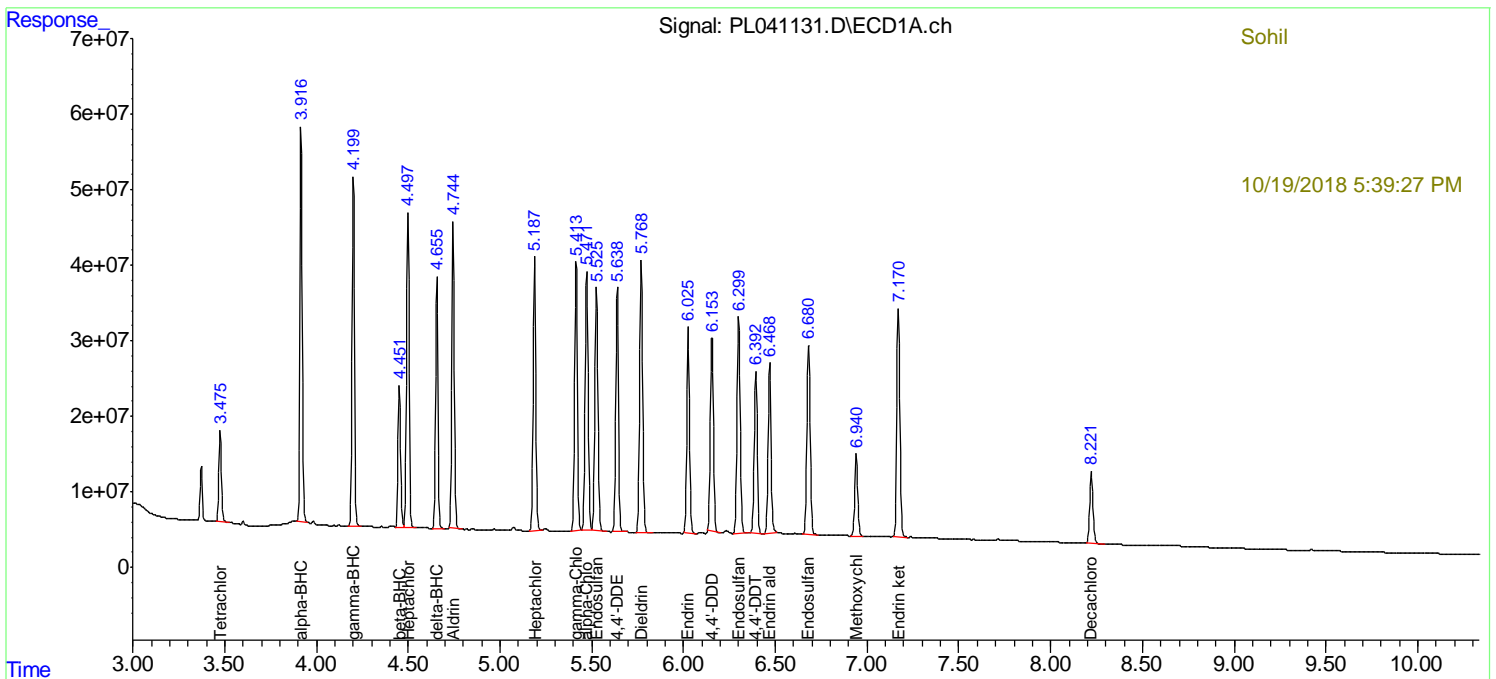
Data Path : Z:\pestpcbsrv\HPCHEM1\ECD_L\Data\PL101818\
 Data File : PL041131.D
 Signal(s) : Signal #1: ECD1A.ch Signal #2: ECD2B.ch
 Acq On : 18 Oct 2018 20:44
 Operator : AJ\SJ
 Sample : J5549-01MS
 Misc :
 ALS Vial : 35 Sample Multiplier: 1

Instrument :
 ECD_L
Client Sampled :
 CB-1018-S-TCLP-GRID-45MS

Manual Integrations
APPROVED
 Sohil
 10/19/2018 5:39:27 PM

Integration File signal 1: autoint1.e
 Integration File signal 2: autoint2.e
 Quant Time: Oct 19 00:56:00 2018
 Quant Method : Z:\pestpcbsrv\HPCHEM1\ECD_L\methods\PL101118.M
 Quant Title : GC Extractables
 QLast Update : Thu Oct 11 03:28:36 2018
 Response via : Initial Calibration
 Integrator: ChemStation

Volume Inj. : 2 µl
 Signal #1 Phase : ZB-MR1 Signal #2 Phase: ZB-MR2
 Signal #1 Info : 30M x 0.32mm x0.5 Signal #2 Info : 30M x 0.32mm x0.25µm



Sohil
 10/19/2018 5:39:27 PM

