

Data Path : Z:\pestpcbsrv\HPCHEM1\ECD_L\Data\PL101819\
 Data File : PL053417.D
 Signal(s) : Signal #1: ECD1A.ch Signal #2: ECD2B.ch
 Acq On : 17 Oct 2019 18:40
 Operator : SG\AJ
 Sample : PEM
 Misc :
 ALS Vial : 24 Sample Multiplier: 1

Instrument :
 ECD_L
ClientSampled :
 PEM

Manual Integrations
APPROVED
 Ankita
 10/18/2019 4:37:33 PM

Integration File signal 1: autoint1.e
 Integration File signal 2: autoint2.e
 Quant Time: Oct 18 08:23:51 2019
 Quant Method : Z:\pestpcbsrv\HPCHEM1\ECD_L\methods\PL101819.M
 Quant Title : GC Extractables
 QLast Update : Fri Oct 18 04:15:35 2019
 Response via : Initial Calibration
 Integrator: ChemStation

Volume Inj. : 1 µl
 Signal #1 Phase : ZB-MR2 Signal #2 Phase: ZB-MR1
 Signal #1 Info : 30M x 0.32mm x0.2 Signal #2 Info : 30M x 0.32mm x0.5µm

Compound	RT#1	RT#2	Resp#1	Resp#2	ng/ml	ng/ml

System Monitoring Compounds						
1) SA Tetrachlo...	3.545	4.046	205.9E6	47351512	18.168	18.249
28) SA Decachlor...	8.336	9.130	200.6E6	54923588	19.033	18.839
Target Compounds						
2) A alpha-BHC	3.988	4.438	157.6E6	30455170	8.680	8.309
3) MA gamma-BHC...	4.275	4.723	136.2E6	29004867	8.349	8.556
6) B beta-BHC	4.526	4.893	62448005	15376970	9.111	9.997
12) B 4,4'-DDE	5.731	6.388	3416254	900369	0.266m	0.301m
14) MA Endrin	6.128	6.759	579.7E6	120.8E6	46.099	45.012
16) A 4,4'-DDD	6.250	6.878	4671841	991371	0.483m	0.436m
17) MA 4,4'-DDT	6.494	7.179	1070.4E6	239.7E6	98.033	96.308
18) B Endrin al...	6.568	7.090	5384191	730688	0.541m	0.315m#
20) A Methoxychlor	7.040	7.636	1229.4E6	308.3E6	229.354	224.717
21) B Endrin ke...	7.275	7.785	12326864	1858183	1.073m	0.690 #

(f)=RT Delta > 1/2 Window (#)=Amounts differ by > 25% (m)=manual int.

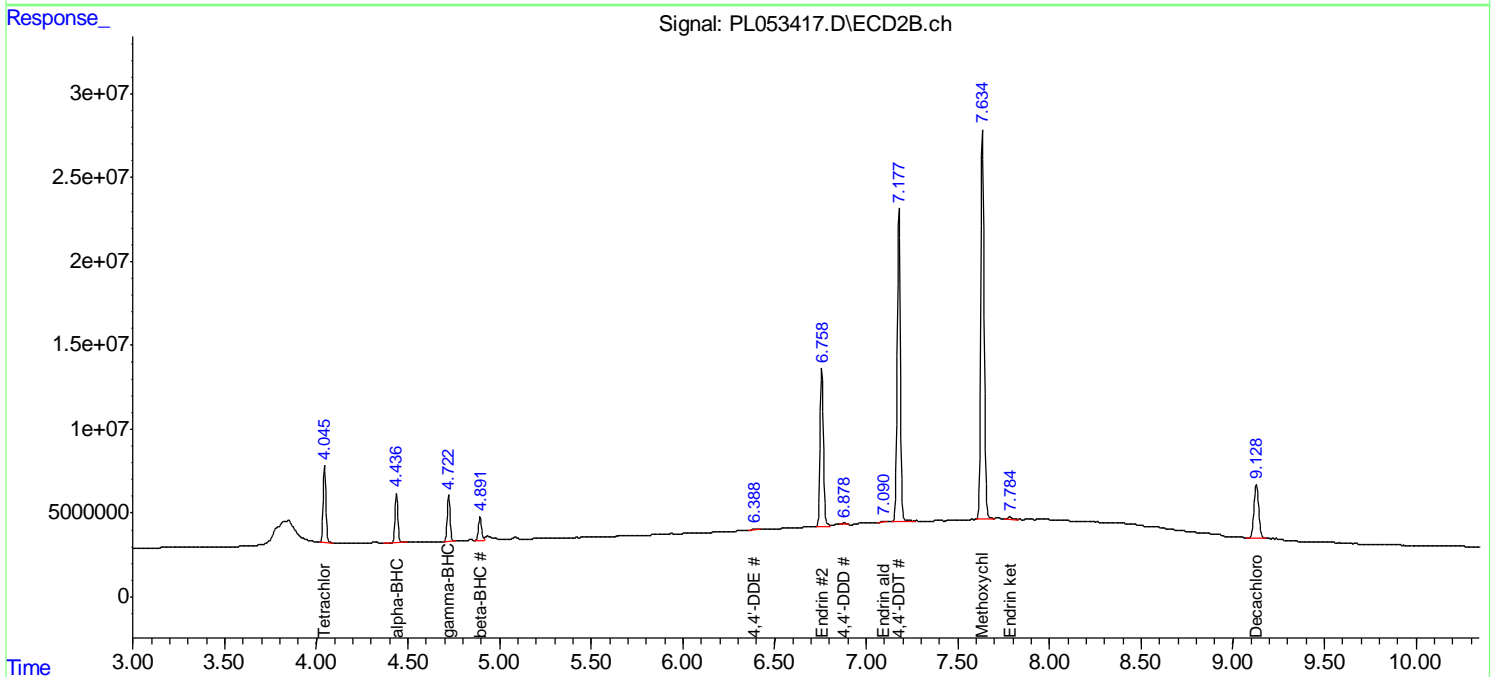
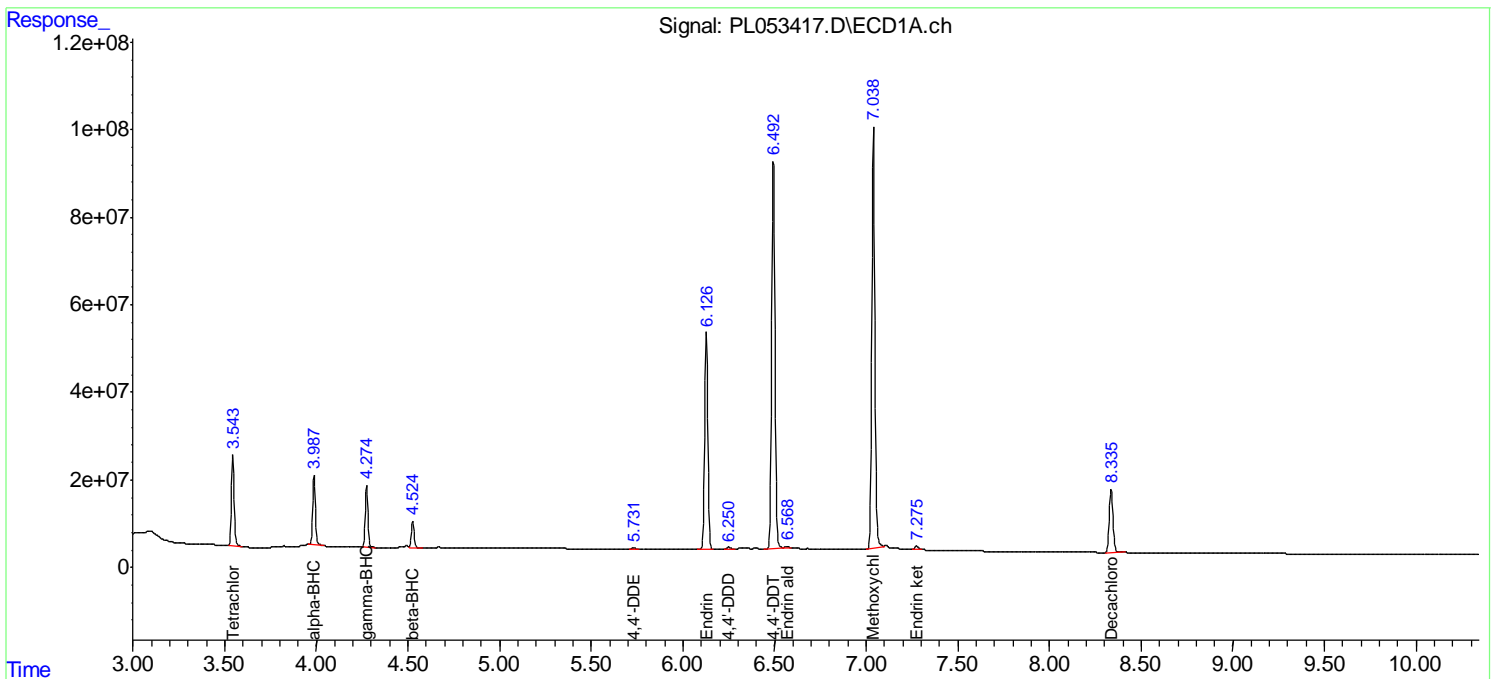
Data Path : Z:\pestpcbsrv\HPCHEM1\ECD_L\Data\PL101819\
 Data File : PL053417.D
 Signal(s) : Signal #1: ECD1A.ch Signal #2: ECD2B.ch
 Acq On : 17 Oct 2019 18:40
 Operator : SG\AJ
 Sample : PEM
 Misc :
 ALS Vial : 24 Sample Multiplier: 1

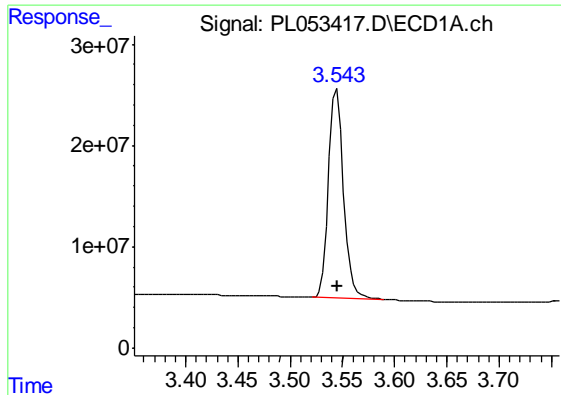
Instrument :
 ECD_L
Client Sampled :
 PEM

Manual Integrations
APPROVED
 Ankita
 10/18/2019 4:37:33 PM

Integration File signal 1: autoint1.e
 Integration File signal 2: autoint2.e
 Quant Time: Oct 18 08:23:51 2019
 Quant Method : Z:\pestpcbsrv\HPCHEM1\ECD_L\methods\PL101819.M
 Quant Title : GC Extractables
 QLast Update : Fri Oct 18 04:15:35 2019
 Response via : Initial Calibration
 Integrator: ChemStation

Volume Inj. : 1 µl
 Signal #1 Phase : ZB-MR2 Signal #2 Phase: ZB-MR1
 Signal #1 Info : 30M x 0.32mm x0.2 Signal #2 Info : 30M x 0.32mm x0.5µm

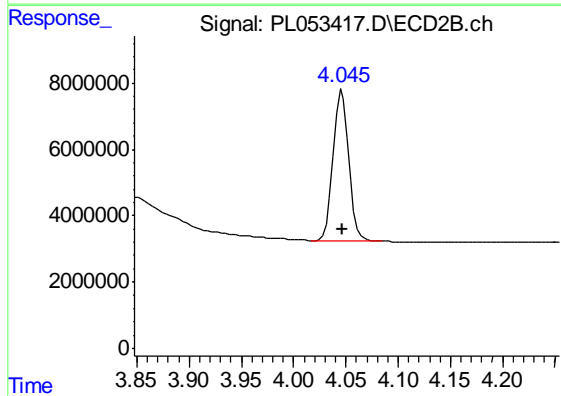




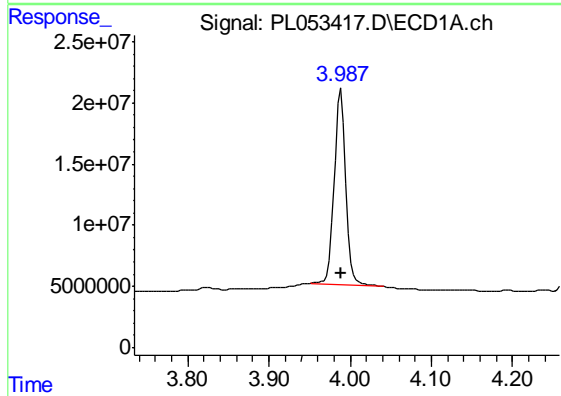
#1 Tetrachloro-m-xylene
 R.T.: 3.545 min
 Delta R.T.: 0.000 min
 Response: 205908151
 Conc: 18.17 ng/ml

Instrument :
 ECD_L
 ClientSampled :
 PEM

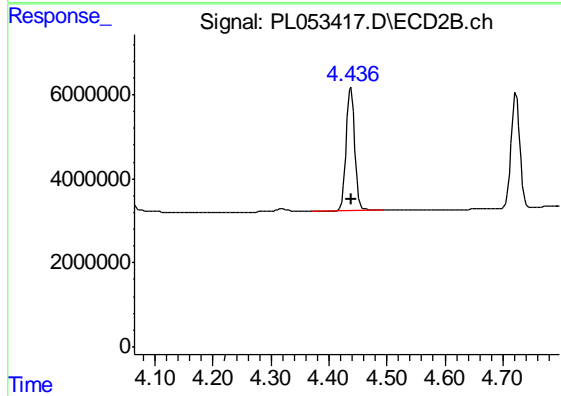
Manual Integrations
 APPROVED
 Ankita
 10/18/2019 4:37:33 PM



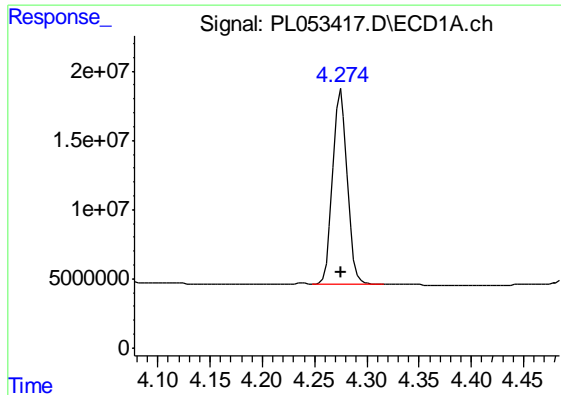
#1 Tetrachloro-m-xylene
 R.T.: 4.046 min
 Delta R.T.: 0.000 min
 Response: 47351512
 Conc: 18.25 ng/ml



#2 alpha-BHC
 R.T.: 3.988 min
 Delta R.T.: 0.000 min
 Response: 157613572
 Conc: 8.68 ng/ml



#2 alpha-BHC
 R.T.: 4.438 min
 Delta R.T.: 0.000 min
 Response: 30455170
 Conc: 8.31 ng/ml



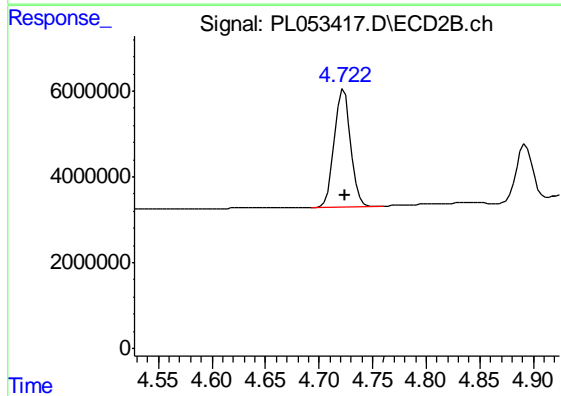
#3 gamma-BHC (Lindane)

R.T.: 4.275 min
 Delta R.T.: 0.000 min
 Response: 136191316
 Conc: 8.35 ng/ml

Instrument :
 ECD_L
 ClientSampled :
 PEM

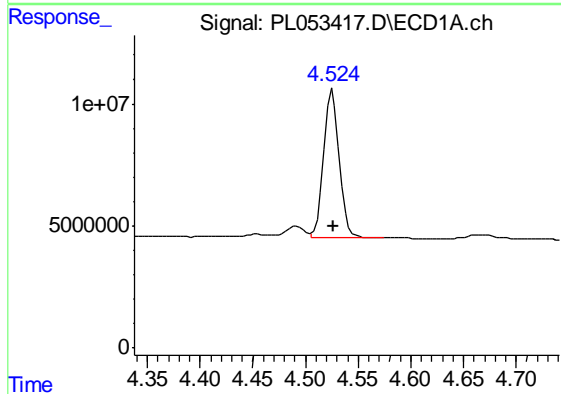
Manual Integrations
 APPROVED

Ankita
 10/18/2019 4:37:33 PM



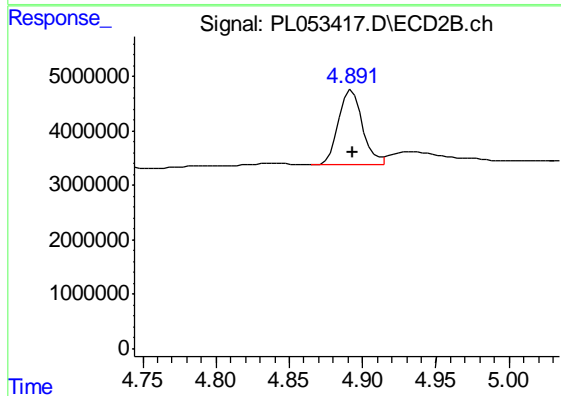
#3 gamma-BHC (Lindane)

R.T.: 4.723 min
 Delta R.T.: 0.000 min
 Response: 29004867
 Conc: 8.56 ng/ml



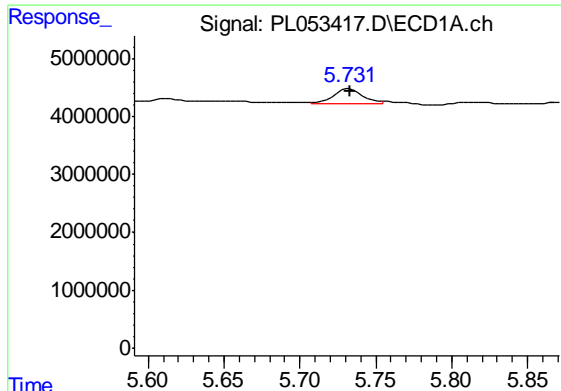
#6 beta-BHC

R.T.: 4.526 min
 Delta R.T.: 0.000 min
 Response: 62448005
 Conc: 9.11 ng/ml



#6 beta-BHC

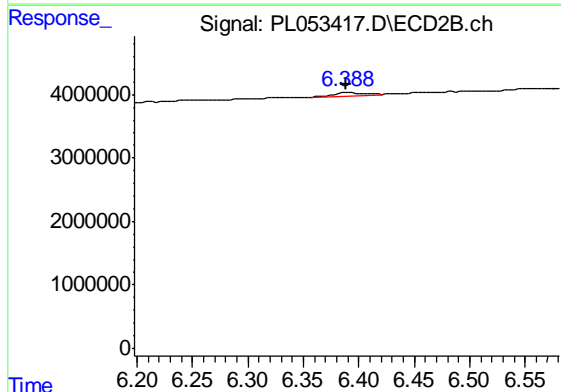
R.T.: 4.893 min
 Delta R.T.: 0.000 min
 Response: 15376970
 Conc: 10.00 ng/ml



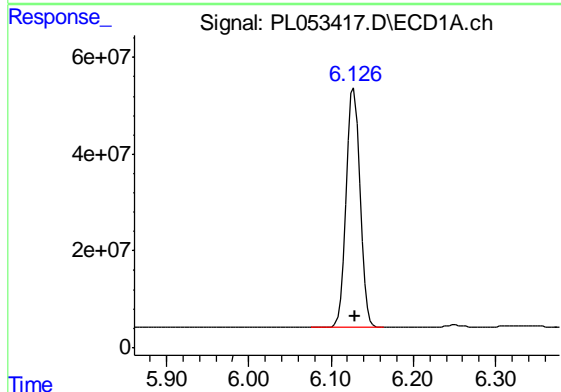
#12 4,4'-DDE
 R.T.: 5.731 min
 Delta R.T.: -0.002 min
 Response: 3416254
 Conc: 0.27 ng/ml m

Instrument :
 ECD_L
 ClientSampled :
 PEM

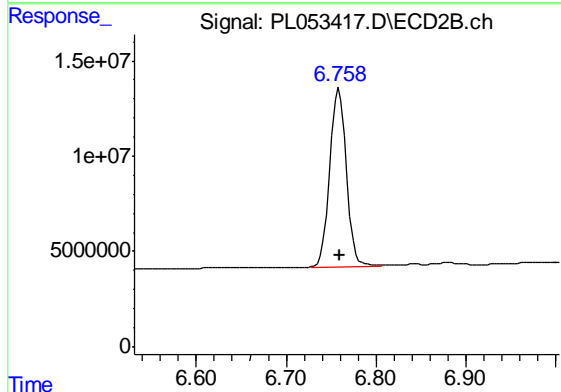
Manual Integrations
 APPROVED
 Ankita
 10/18/2019 4:37:33 PM



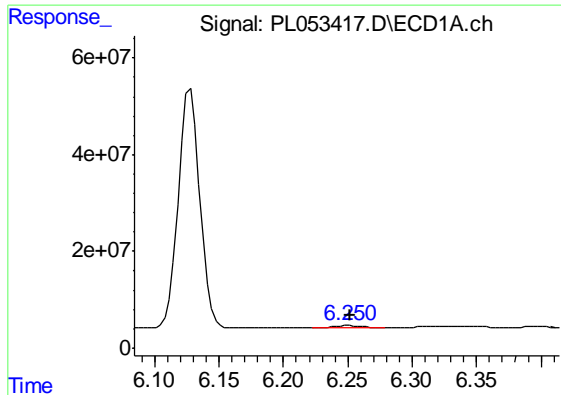
#12 4,4'-DDE
 R.T.: 6.388 min
 Delta R.T.: -0.001 min
 Response: 900369
 Conc: 0.30 ng/ml m



#14 Endrin
 R.T.: 6.128 min
 Delta R.T.: -0.001 min
 Response: 579734657
 Conc: 46.10 ng/ml



#14 Endrin
 R.T.: 6.759 min
 Delta R.T.: 0.000 min
 Response: 120771789
 Conc: 45.01 ng/ml



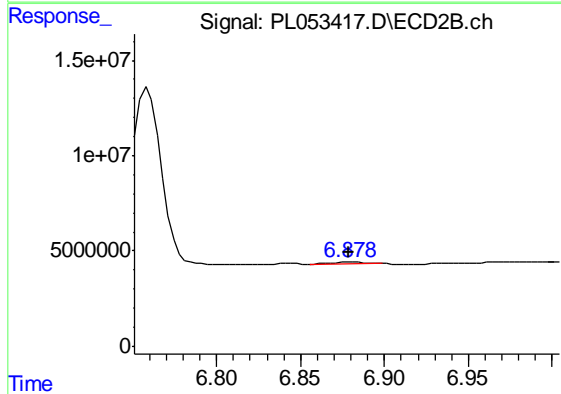
#16 4,4'-DDD

R.T.: 6.250 min
 Delta R.T.: -0.002 min
 Response: 4671841
 Conc: 0.48 ng/ml m

Instrument :
 ECD_L
 ClientSampled :
 PEM

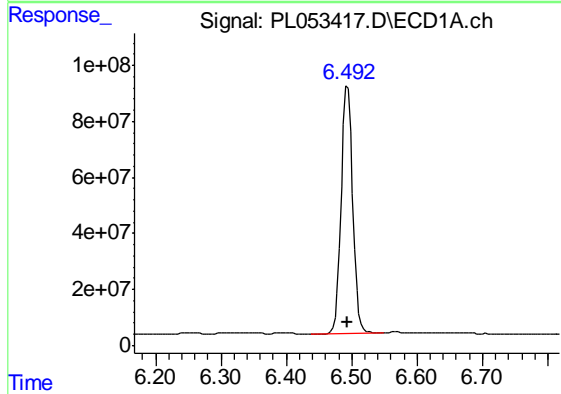
Manual Integrations
 APPROVED

Ankita
 10/18/2019 4:37:33 PM



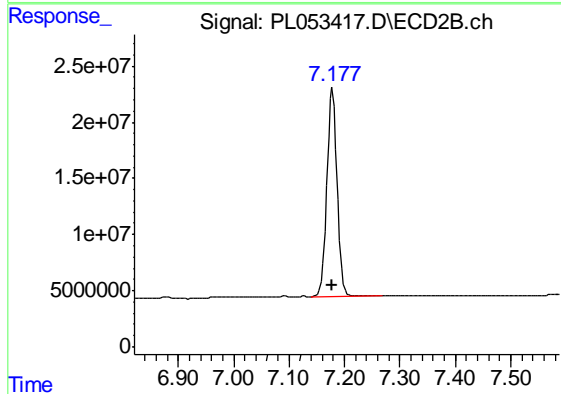
#16 4,4'-DDD

R.T.: 6.878 min
 Delta R.T.: -0.002 min
 Response: 991371
 Conc: 0.44 ng/ml m



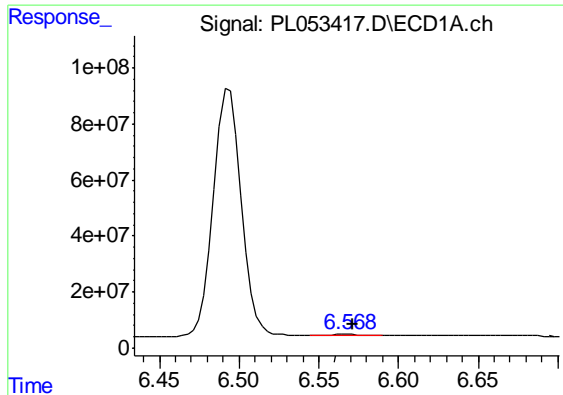
#17 4,4'-DDT

R.T.: 6.494 min
 Delta R.T.: 0.000 min
 Response: 1070440629
 Conc: 98.03 ng/ml



#17 4,4'-DDT

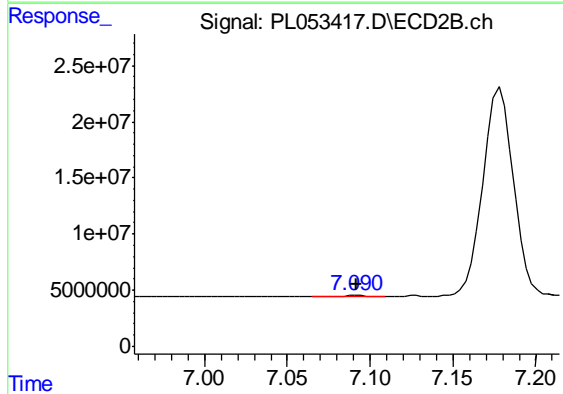
R.T.: 7.179 min
 Delta R.T.: 0.000 min
 Response: 239692496
 Conc: 96.31 ng/ml



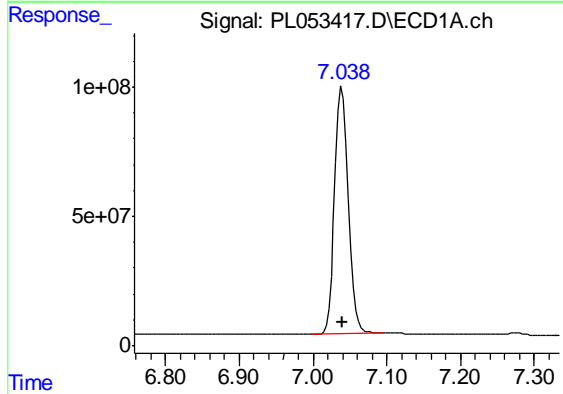
#18 Endrin aldehyde
 R.T.: 6.568 min
 Delta R.T.: -0.003 min
 Response: 5384191
 Conc: 0.54 ng/ml m

Instrument :
 ECD_L
 ClientSampled :
 PEM

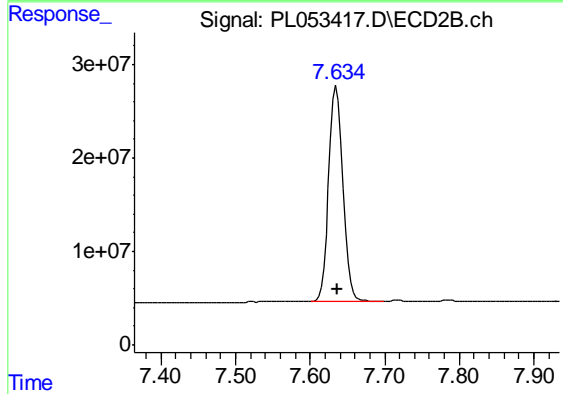
Manual Integrations
 APPROVED
 Ankita
 10/18/2019 4:37:33 PM



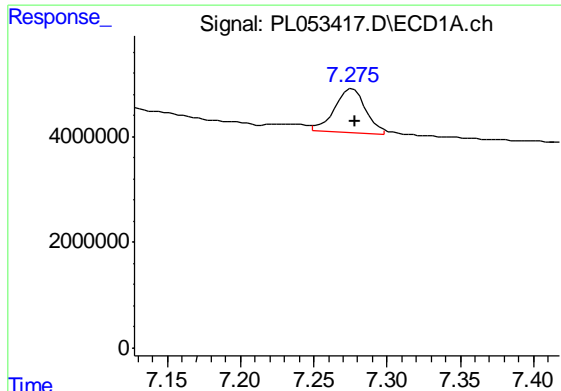
#18 Endrin aldehyde
 R.T.: 7.090 min
 Delta R.T.: -0.001 min
 Response: 730688
 Conc: 0.32 ng/ml m



#20 Methoxychlor
 R.T.: 7.040 min
 Delta R.T.: 0.000 min
 Response: 1229425811
 Conc: 229.35 ng/ml



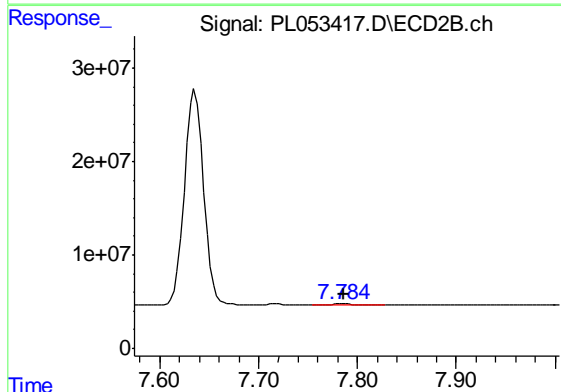
#20 Methoxychlor
 R.T.: 7.636 min
 Delta R.T.: 0.000 min
 Response: 308318343
 Conc: 224.72 ng/ml



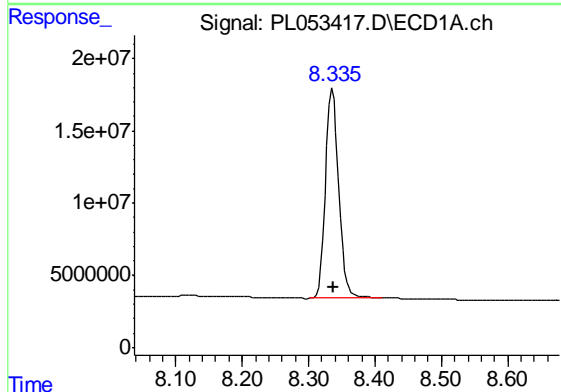
#21 Endrin ketone
 R.T.: 7.275 min
 Delta R.T.: -0.003 min
 Response: 12326864
 Conc: 1.07 ng/ml m

Instrument :
 ECD_L
 ClientSampled :
 PEM

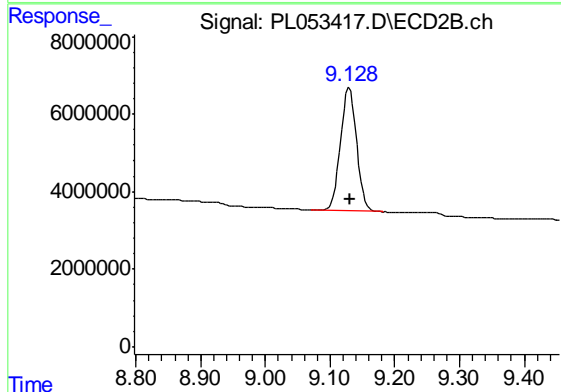
Manual Integrations
 APPROVED
 Ankita
 10/18/2019 4:37:33 PM



#21 Endrin ketone
 R.T.: 7.785 min
 Delta R.T.: -0.001 min
 Response: 1858183
 Conc: 0.69 ng/ml



#28 Decachlorobiphenyl
 R.T.: 8.336 min
 Delta R.T.: -0.001 min
 Response: 200581954
 Conc: 19.03 ng/ml



#28 Decachlorobiphenyl
 R.T.: 9.130 min
 Delta R.T.: -0.001 min
 Response: 54923588
 Conc: 18.84 ng/ml