

Data Path : Z:\pestpcbsrv\HPCHEM1\ECD\_L\Data\PL101821\  
 Data File : PL070382.D  
 Signal(s) : Signal #1: ECD1A.ch Signal #2: ECD2B.ch  
 Acq On : 18 Oct 2021 19:53  
 Operator : AR\AJ  
 Sample : PB139998BL  
 Misc :  
 ALS Vial : 18 Sample Multiplier: 1

Instrument :  
 ECD\_L  
 ClientSampleId :  
 PB139998BL

Integration File signal 1: autoint1.e  
 Integration File signal 2: autoint2.e  
 Quant Time: Oct 19 05:38:47 2021  
 Quant Method : Z:\pestpcbsrv\HPCHEM1\ECD\_L\methods\PL092821.M  
 Quant Title : GC Extractables  
 QLast Update : Wed Sep 29 09:19:28 2021  
 Response via : Initial Calibration  
 Integrator: ChemStation

Volume Inj. : 1 µl  
 Signal #1 Phase : ZB-MR2 Signal #2 Phase: ZB-MR1  
 Signal #1 Info : 30M x 0.32mm x0.2 Signal #2 Info : 30M x 0.32mm x0.5µm

Compound	RT#1	RT#2	Resp#1	Resp#2	ng/ml	ng/ml
-----						
System Monitoring Compounds						
1) SA Tetrachlo...	4.624	5.562	9317927	24268281	18.621	18.349
28) SA Decachlor...	10.389	11.484	14507577	23265776	20.965	19.225

Target Compounds

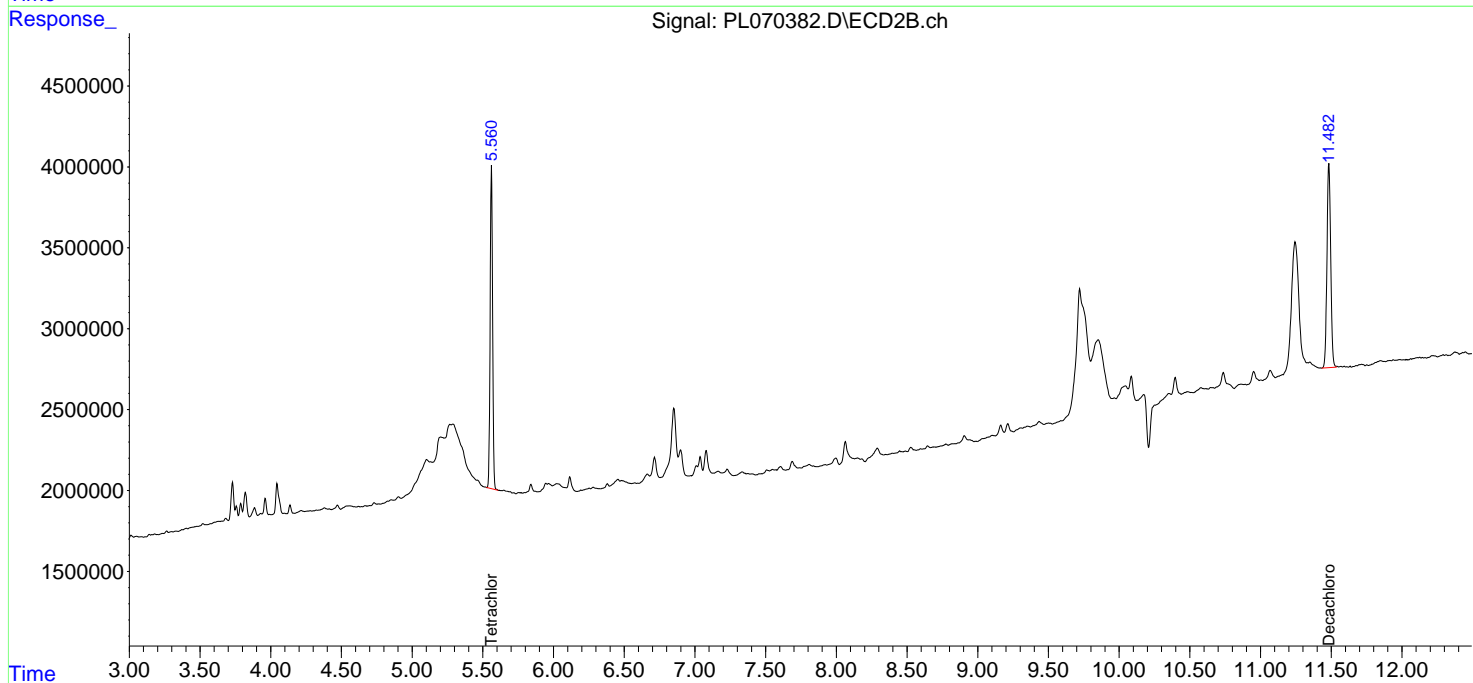
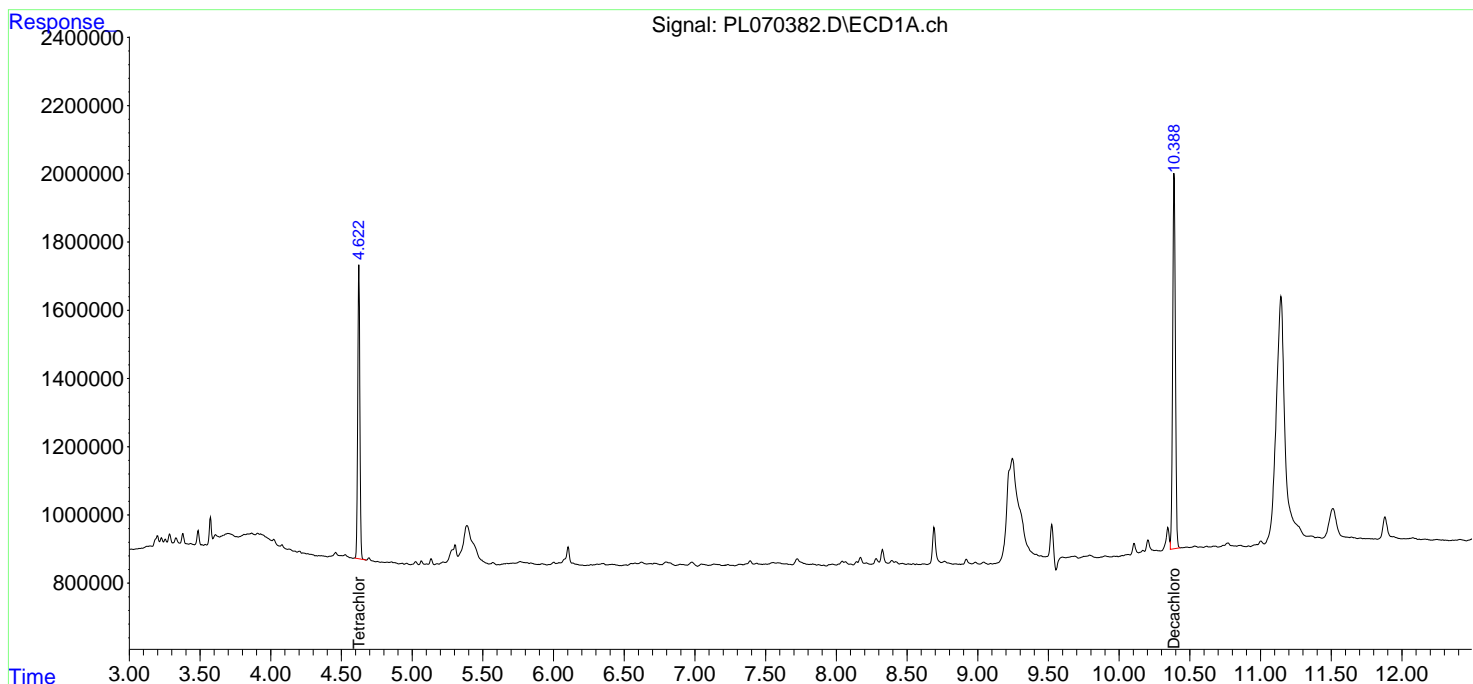
(f)=RT Delta > 1/2 Window (#)=Amounts differ by > 25% (m)=manual int.

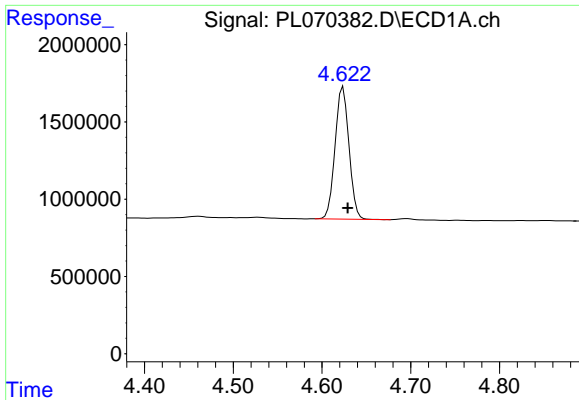
Data Path : Z:\pestpcbsrv\HPCHEM1\ECD\_L\Data\PL101821\  
 Data File : PL070382.D  
 Signal(s) : Signal #1: ECD1A.ch Signal #2: ECD2B.ch  
 Acq On : 18 Oct 2021 19:53  
 Operator : AR\AJ  
 Sample : PB139998BL  
 Misc :  
 ALS Vial : 18 Sample Multiplier: 1

Instrument :  
 ECD\_L  
 ClientSampled :  
 PB139998BL

Integration File signal 1: autoint1.e  
 Integration File signal 2: autoint2.e  
 Quant Time: Oct 19 05:38:47 2021  
 Quant Method : Z:\pestpcbsrv\HPCHEM1\ECD\_L\methods\PL092821.M  
 Quant Title : GC Extractables  
 QLast Update : Wed Sep 29 09:19:28 2021  
 Response via : Initial Calibration  
 Integrator: ChemStation

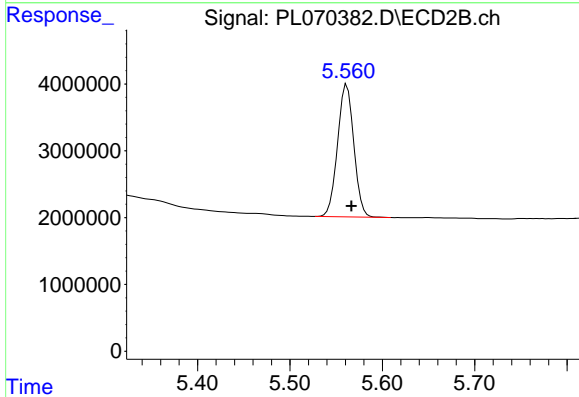
Volume Inj. : 1 µl  
 Signal #1 Phase : ZB-MR2 Signal #2 Phase: ZB-MR1  
 Signal #1 Info : 30M x 0.32mm x0.2 Signal #2 Info : 30M x 0.32mm x0.5µm



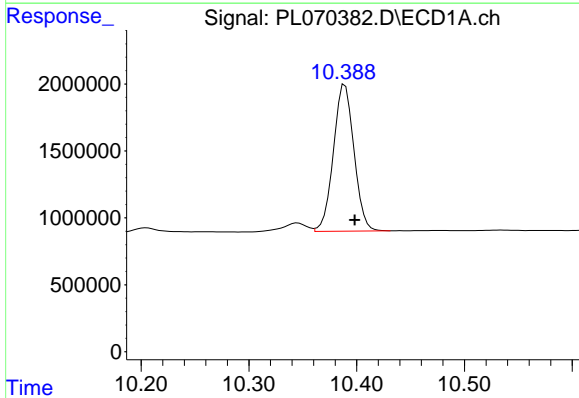


#1 Tetrachloro-m-xylene  
R.T.: 4.624 min  
Delta R.T.: -0.005 min  
Response: 9317927  
Conc: 18.62 ng/ml

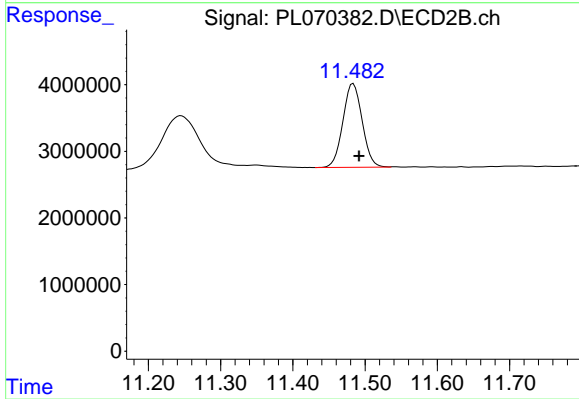
Instrument :  
ECD\_L  
ClientSampleId :  
PB139998BL



#1 Tetrachloro-m-xylene  
R.T.: 5.562 min  
Delta R.T.: -0.005 min  
Response: 24268281  
Conc: 18.35 ng/ml



#28 Decachlorobiphenyl  
R.T.: 10.389 min  
Delta R.T.: -0.009 min  
Response: 14507577  
Conc: 20.97 ng/ml



#28 Decachlorobiphenyl  
R.T.: 11.484 min  
Delta R.T.: -0.008 min  
Response: 23265776  
Conc: 19.23 ng/ml