

Data Path : Z:\pestpcbsrv\HPCHEM1\ECD_L\Data\PL101823\
 Data File : PL085994.D
 Signal(s) : Signal #1: ECD1A.ch Signal #2: ECD2B.ch
 Acq On : 18 Oct 2023 13:21
 Operator : AR\AJ
 Sample : PB156367BSD
 Misc :
 ALS Vial : 7 Sample Multiplier: 1

Instrument :
 ECD_L
 ClientSampleId :

Integration File signal 1: autoint1.e
 Integration File signal 2: autoint2.e
 Quant Time: Oct 18 14:55:35 2023
 Quant Method : Z:\pestpcbsrv\HPCHEM1\ECD_L\methods\PL100323.M
 Quant Title : GC Extractables
 QLast Update : Wed Oct 04 05:29:39 2023
 Response via : Initial Calibration
 Integrator: ChemStation

Volume Inj. : 1 µl
 Signal #1 Phase : ZB-MR2 Signal #2 Phase: ZB-MR1
 Signal #1 Info : 30M x 0.32mm x0.2 Signal #2 Info : 30M x 0.32mm x0.5µm

	Compound	RT#1	RT#2	Resp#1	Resp#2	ng/ml	ng/ml

System Monitoring Compounds							
1)	SA Tetrachlo...	3.364	2.621	47244369	14390739	15.885	15.406
28)	SA Decachlor...	8.865	7.776	55402473	24270075	25.437	26.295
Target Compounds							
2)	A alpha-BHC	3.818	3.120	35978071	9962024	8.383	7.918
3)	MA gamma-BHC...	4.150	3.448	36797913	10262912	8.903	8.321
4)	MA Heptachlor	4.737	3.784	40277642	11554012	10.414	9.934
5)	MB Aldrin	5.077	4.061	34479390	9950907	8.895	8.899
6)	B beta-BHC	4.353	3.750	17235351	5434326	10.423	10.439
7)	B delta-BHC	4.595	3.975	37644088	9568184	9.817	8.328
8)	B Heptachlo...	5.506	4.566	35121121	10207188	10.181	10.162
9)	A Endosulfan I	5.889	4.933	36792453	9809173	11.377	9.144
10)	B gamma-Chl...	5.763	4.818	40960697	10216102	11.972	10.315
11)	B alpha-Chl...	5.842	4.882	39172912	10573230	11.462	9.694
12)	B 4,4'-DDE	6.026	5.081	30131142	8642972	10.774	10.526
13)	MA Dieldrin	6.166	5.200	30802138	9114714	9.374	9.394
14)	MA Endrin	6.395	5.474	31747132	9242752	11.140	10.281
15)	B Endosulfa...	6.616	5.771	30685178	9308471	11.136	9.789
16)	A 4,4'-DDD	6.544	5.637	30004920	6936314	14.893	9.965 #
17)	MA 4,4'-DDT	6.859	5.888	25491035	10136279	10.815	12.819
18)	B Endrin al...	6.749	5.953	21494267	8555717	10.605	11.473
19)	B Endosulfa...	6.984	6.177	28104576	9751346	11.198	10.809
20)	A Methoxychlor	7.345	6.473	22049928	5452507	15.788	10.364 #
21)	B Endrin ke...	7.465	6.679	28625254	10899369	9.938	9.483
22)	Mirex	7.939	6.856	30164745	13358633	13.625	14.164
24)	Chlordane-2	5.077f	4.208f	34479390	105224	265.137	2.704 #
25)	Chlordane-3	5.763	4.818	40960697	10216102	80.283	101.102 #
26)	Chlordane-4	5.842	4.882	39172912	10573230	61.744	91.318 #
27)	Chlordane-5	0.000	5.555	0	42982	N.D.	1.542 #

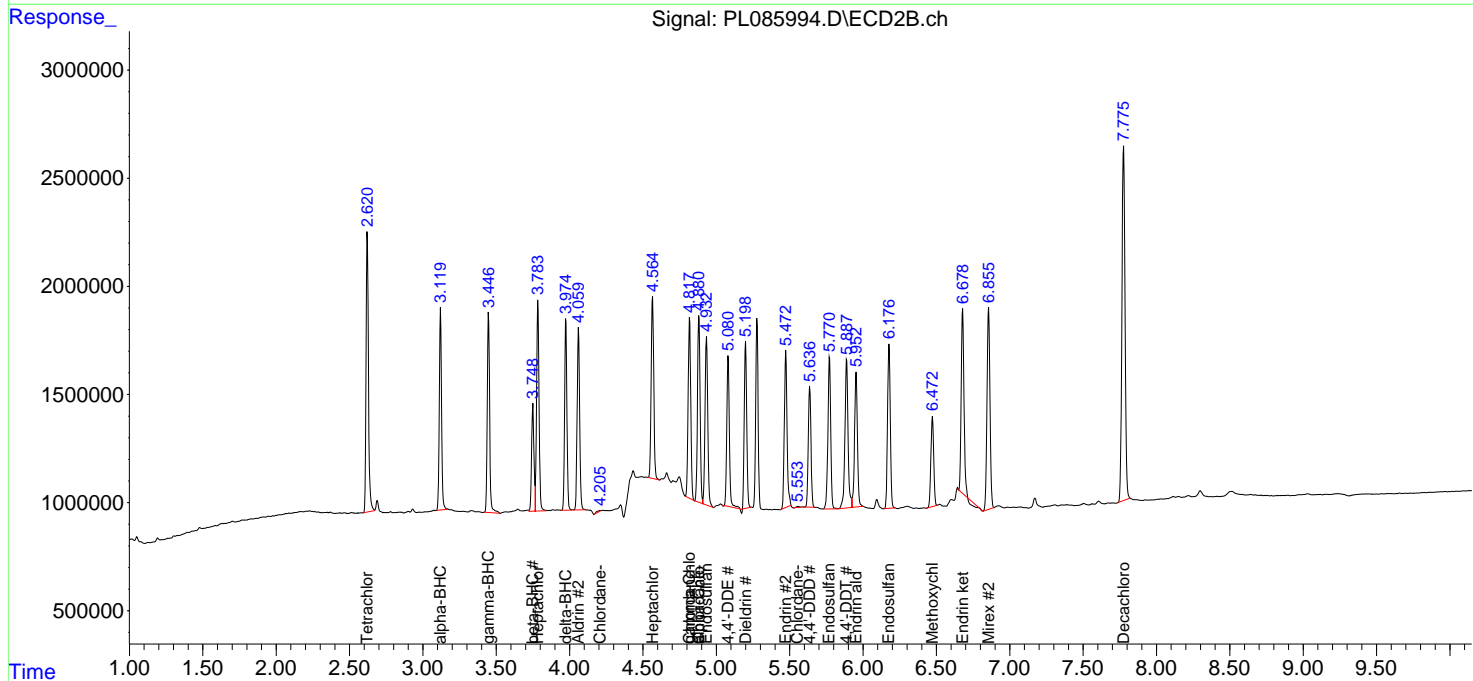
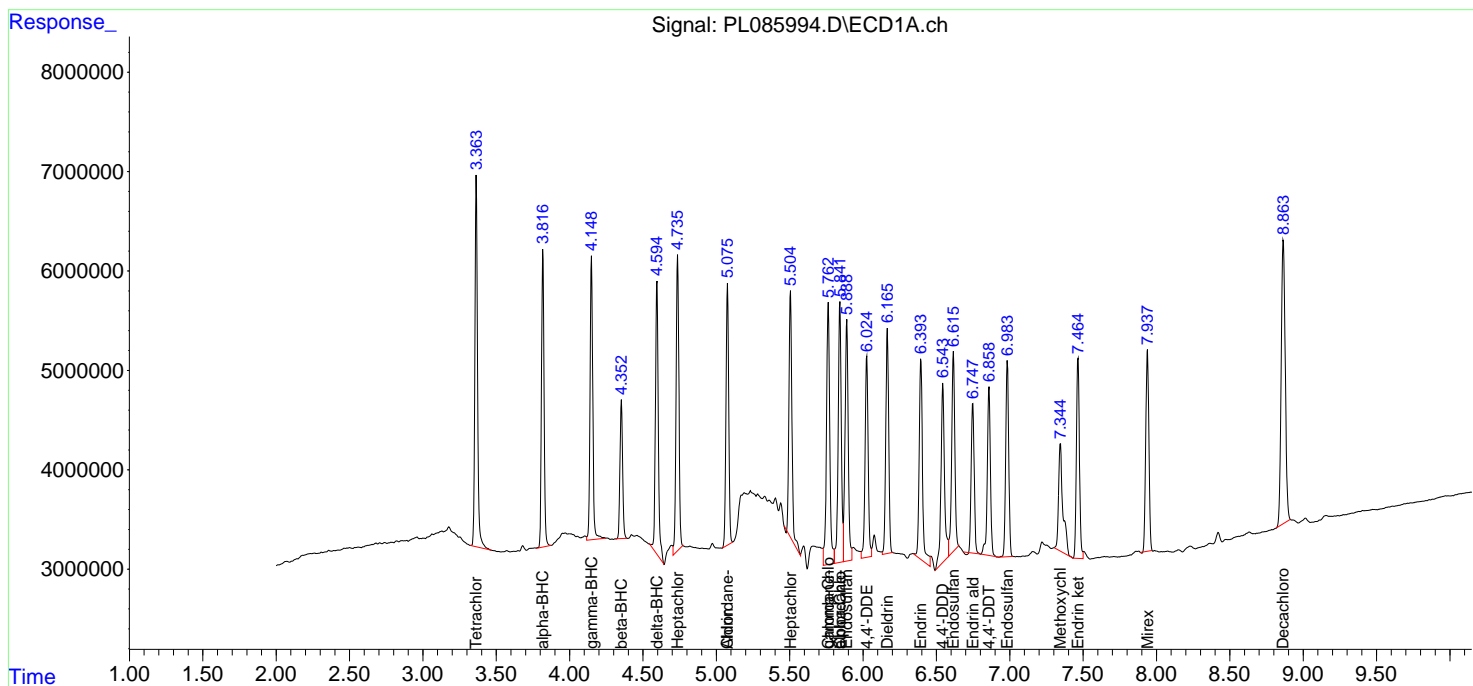
(f)=RT Delta > 1/2 Window (#)=Amounts differ by > 25% (m)=manual int.

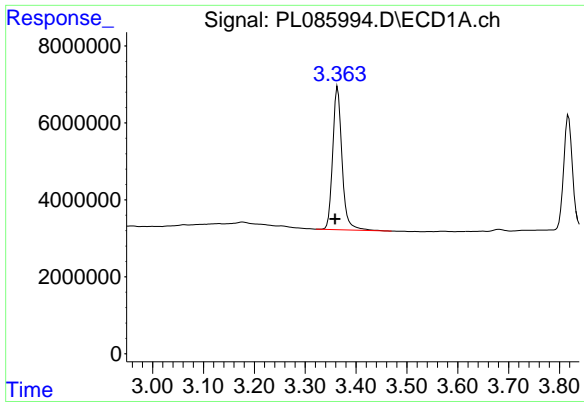
Data Path : Z:\pestpcbsrv\HPCHEM1\ECD_L\Data\PL101823\
 Data File : PL085994.D
 Signal(s) : Signal #1: ECD1A.ch Signal #2: ECD2B.ch
 Acq On : 18 Oct 2023 13:21
 Operator : AR\AJ
 Sample : PB156367BSD
 Misc :
 ALS Vial : 7 Sample Multiplier: 1

Instrument :
 ECD_L
 ClientSampleId :

Integration File signal 1: autoint1.e
 Integration File signal 2: autoint2.e
 Quant Time: Oct 18 14:55:35 2023
 Quant Method : Z:\pestpcbsrv\HPCHEM1\ECD_L\methods\PL100323.M
 Quant Title : GC Extractables
 QLast Update : Wed Oct 04 05:29:39 2023
 Response via : Initial Calibration
 Integrator: ChemStation

Volume Inj. : 1 µl
 Signal #1 Phase : ZB-MR2 Signal #2 Phase: ZB-MR1
 Signal #1 Info : 30M x 0.32mm x0.2 Signal #2 Info : 30M x 0.32mm x0.5µm

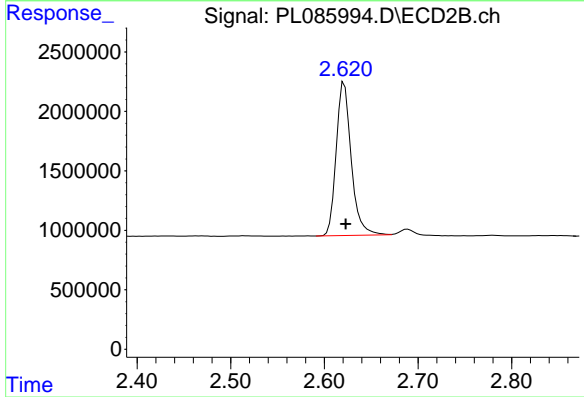




#1 Tetrachloro-m-xylene

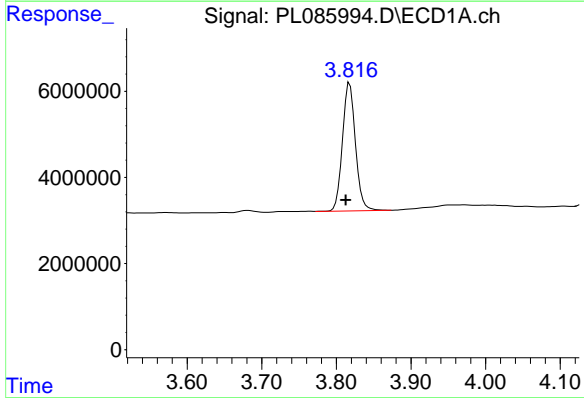
R.T.: 3.364 min
 Delta R.T.: 0.005 min
 Response: 47244369
 Conc: 15.88 ng/ml

Instrument :
 ECD_L
 ClientSampleId :



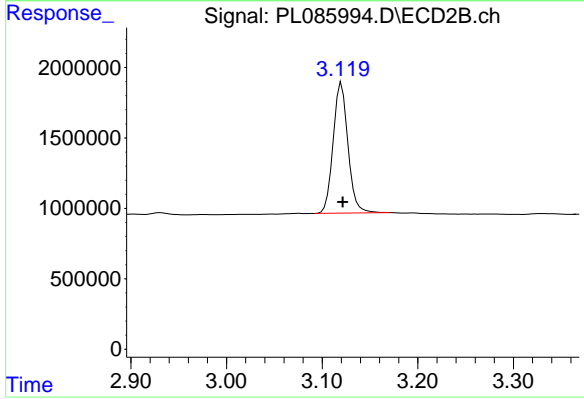
#1 Tetrachloro-m-xylene

R.T.: 2.621 min
 Delta R.T.: -0.001 min
 Response: 14390739
 Conc: 15.41 ng/ml



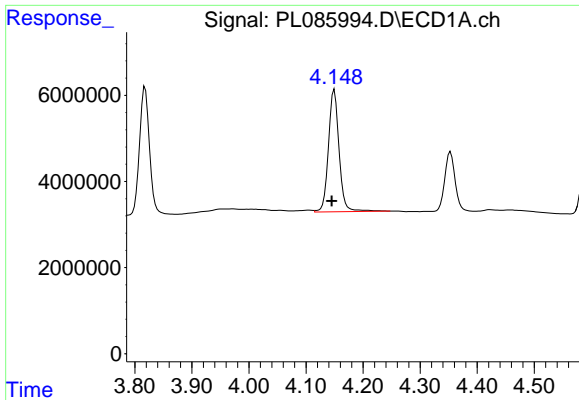
#2 alpha-BHC

R.T.: 3.818 min
 Delta R.T.: 0.005 min
 Response: 35978071
 Conc: 8.38 ng/ml



#2 alpha-BHC

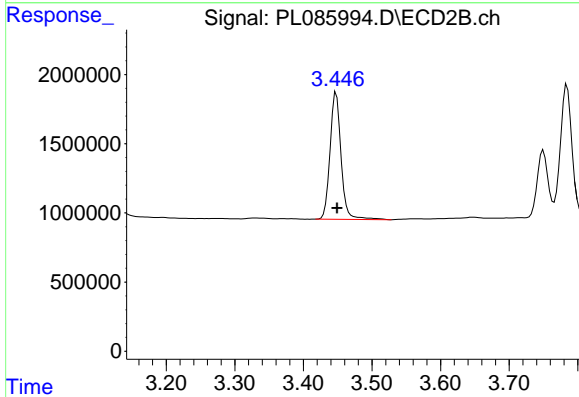
R.T.: 3.120 min
 Delta R.T.: -0.001 min
 Response: 9962024
 Conc: 7.92 ng/ml



#3 gamma-BHC (Lindane)

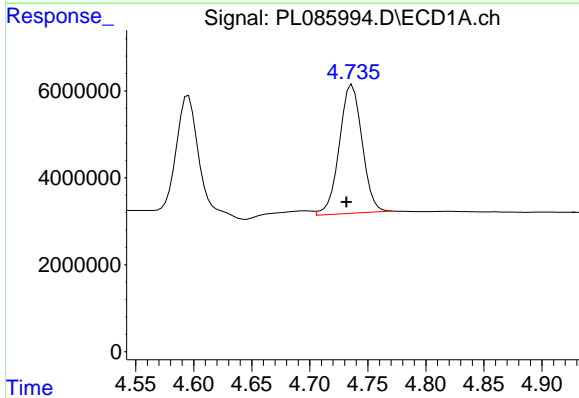
R.T.: 4.150 min
 Delta R.T.: 0.005 min
 Response: 36797913
 Conc: 8.90 ng/ml

Instrument :
 ECD_L
 ClientSampleId :



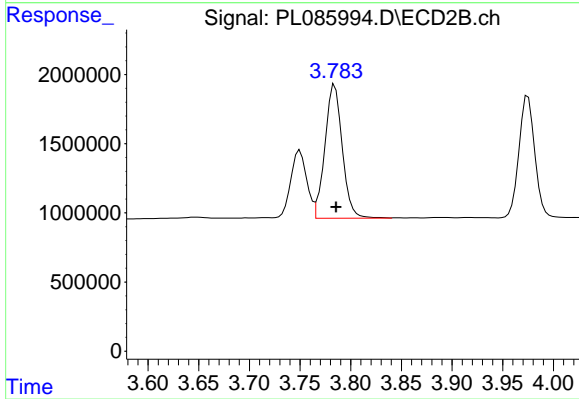
#3 gamma-BHC (Lindane)

R.T.: 3.448 min
 Delta R.T.: -0.001 min
 Response: 10262912
 Conc: 8.32 ng/ml



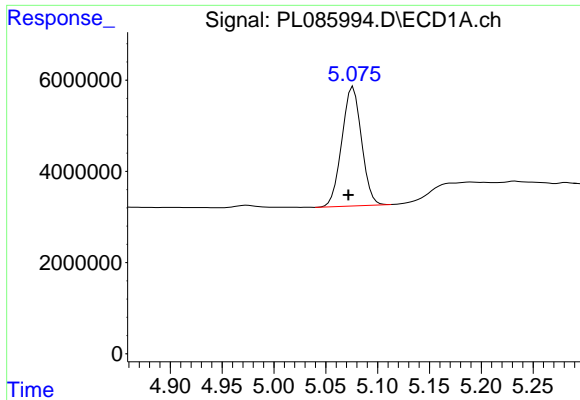
#4 Heptachlor

R.T.: 4.737 min
 Delta R.T.: 0.005 min
 Response: 40277642
 Conc: 10.41 ng/ml



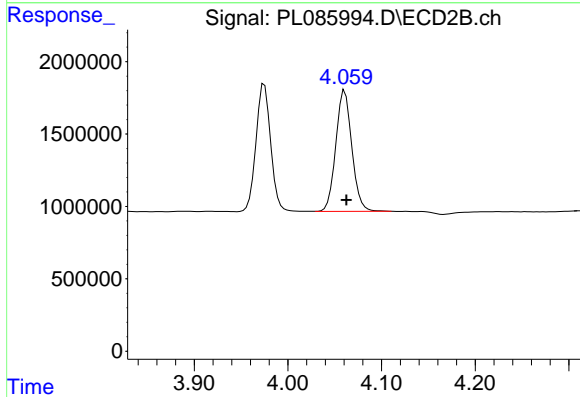
#4 Heptachlor

R.T.: 3.784 min
 Delta R.T.: -0.001 min
 Response: 11554012
 Conc: 9.93 ng/ml

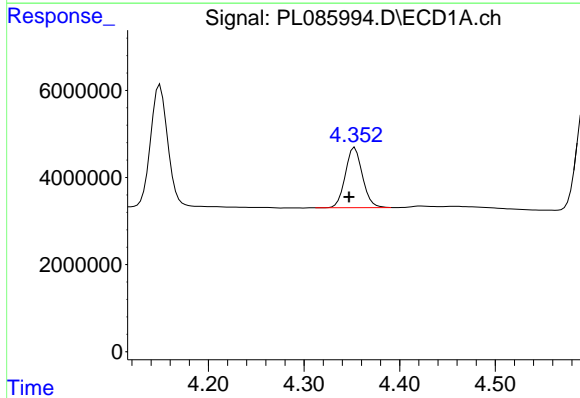


#5 Aldrin
 R.T.: 5.077 min
 Delta R.T.: 0.005 min
 Response: 34479390
 Conc: 8.89 ng/ml

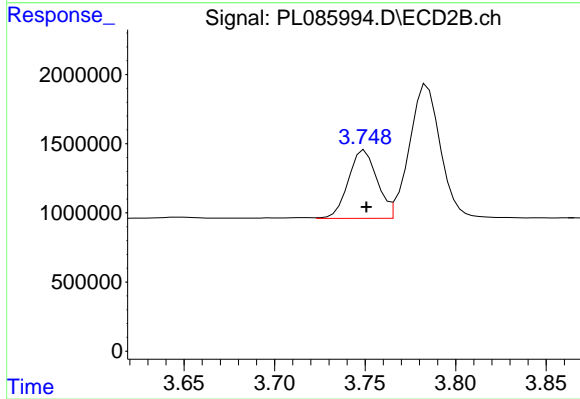
Instrument :
 ECD_L
 ClientSampleId :



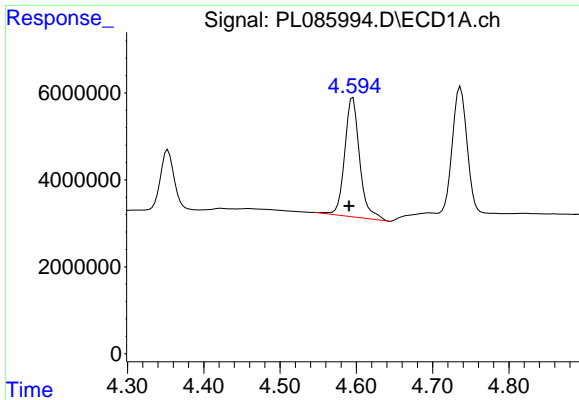
#5 Aldrin
 R.T.: 4.061 min
 Delta R.T.: -0.002 min
 Response: 9950907
 Conc: 8.90 ng/ml



#6 beta-BHC
 R.T.: 4.353 min
 Delta R.T.: 0.006 min
 Response: 17235351
 Conc: 10.42 ng/ml



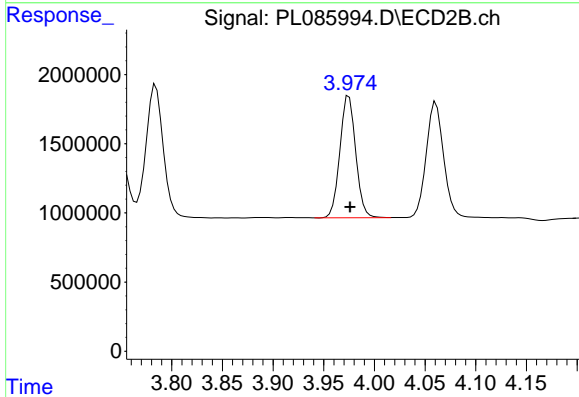
#6 beta-BHC
 R.T.: 3.750 min
 Delta R.T.: 0.000 min
 Response: 5434326
 Conc: 10.44 ng/ml



#7 delta-BHC

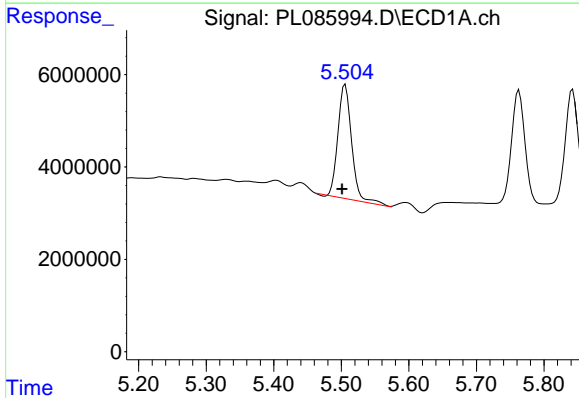
R.T.: 4.595 min
 Delta R.T.: 0.005 min
 Response: 37644088
 Conc: 9.82 ng/ml

Instrument :
 ECD_L
 ClientSampleId :



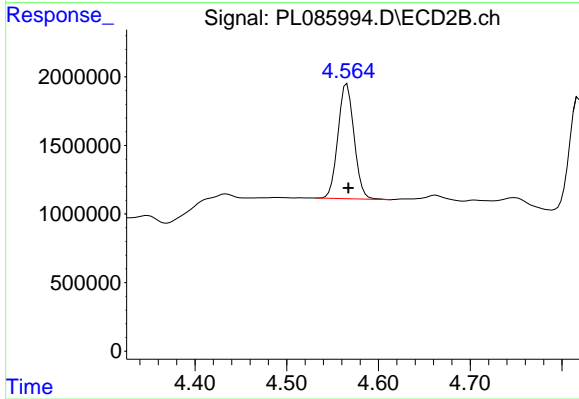
#7 delta-BHC

R.T.: 3.975 min
 Delta R.T.: -0.001 min
 Response: 9568184
 Conc: 8.33 ng/ml



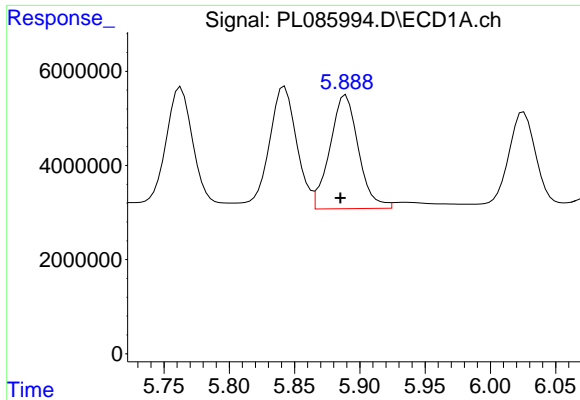
#8 Heptachlor epoxide

R.T.: 5.506 min
 Delta R.T.: 0.005 min
 Response: 35121121
 Conc: 10.18 ng/ml



#8 Heptachlor epoxide

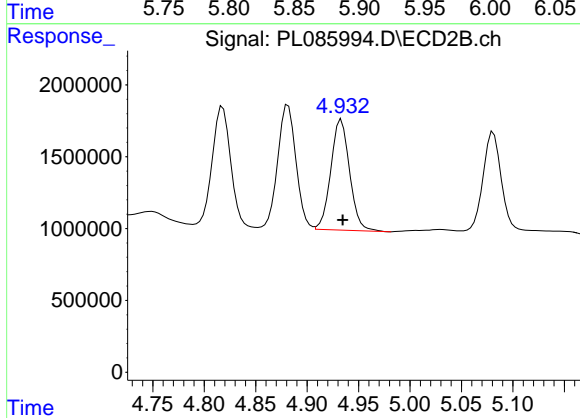
R.T.: 4.566 min
 Delta R.T.: -0.002 min
 Response: 10207188
 Conc: 10.16 ng/ml



#9 Endosulfan I

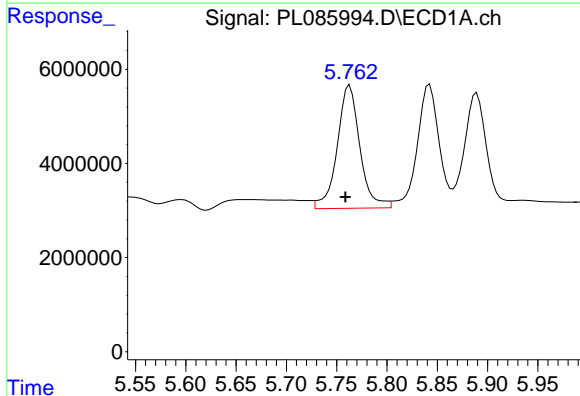
R.T.: 5.889 min
 Delta R.T.: 0.004 min
 Response: 36792453
 Conc: 11.38 ng/ml

Instrument :
 ECD_L
 ClientSampleId :



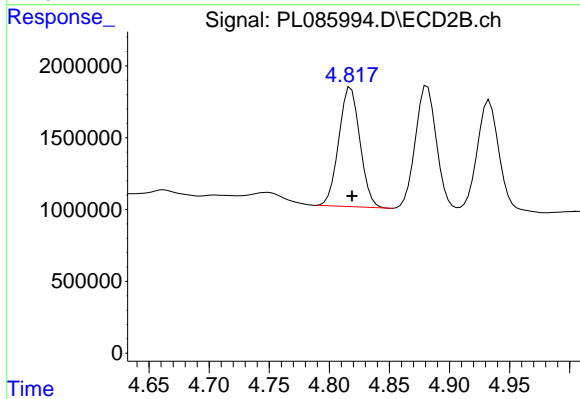
#9 Endosulfan I

R.T.: 4.933 min
 Delta R.T.: -0.001 min
 Response: 9809173
 Conc: 9.14 ng/ml



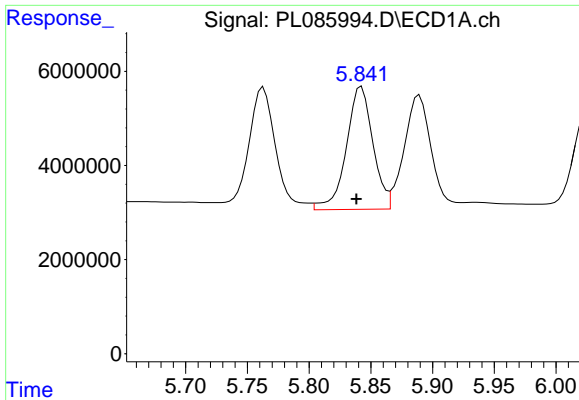
#10 gamma-Chlordane

R.T.: 5.763 min
 Delta R.T.: 0.004 min
 Response: 40960697
 Conc: 11.97 ng/ml



#10 gamma-Chlordane

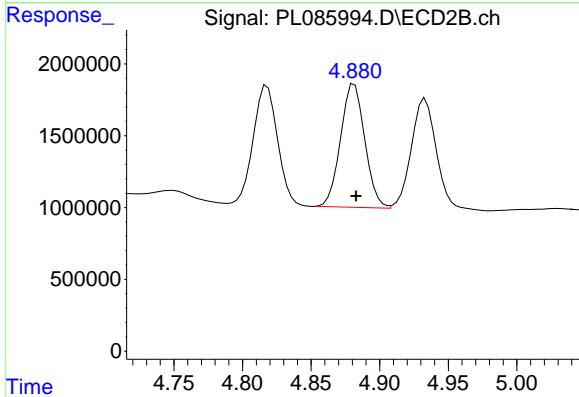
R.T.: 4.818 min
 Delta R.T.: -0.001 min
 Response: 10216102
 Conc: 10.32 ng/ml



#11 alpha-Chlordane

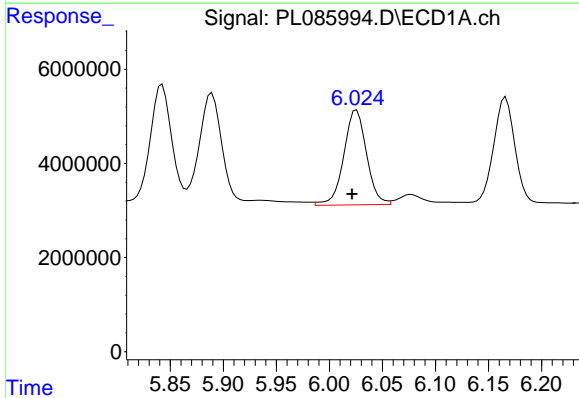
R.T.: 5.842 min
 Delta R.T.: 0.004 min
 Response: 39172912
 Conc: 11.46 ng/ml

Instrument :
 ECD_L
 ClientSampleId :



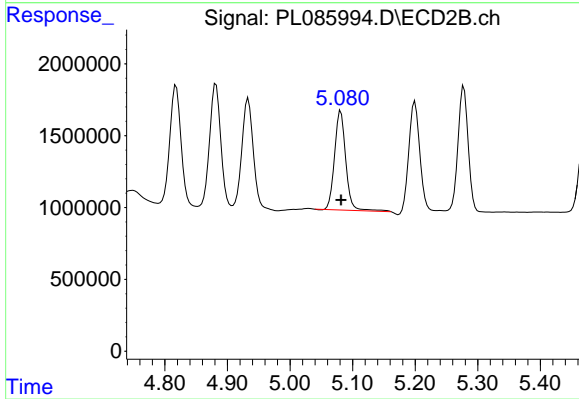
#11 alpha-Chlordane

R.T.: 4.882 min
 Delta R.T.: -0.001 min
 Response: 10573230
 Conc: 9.69 ng/ml



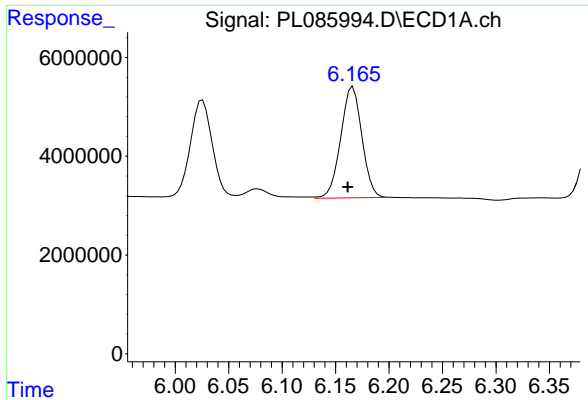
#12 4,4'-DDE

R.T.: 6.026 min
 Delta R.T.: 0.004 min
 Response: 30131142
 Conc: 10.77 ng/ml



#12 4,4'-DDE

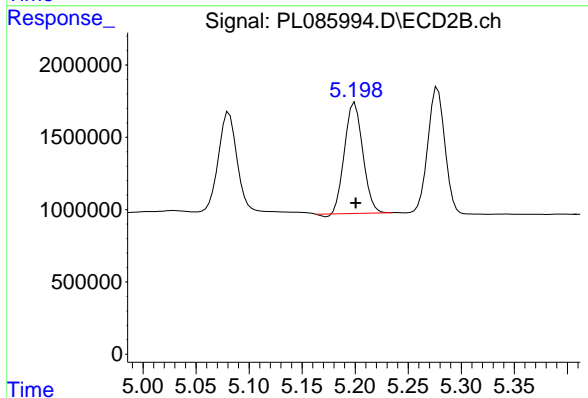
R.T.: 5.081 min
 Delta R.T.: 0.000 min
 Response: 8642972
 Conc: 10.53 ng/ml



#13 Dieldrin

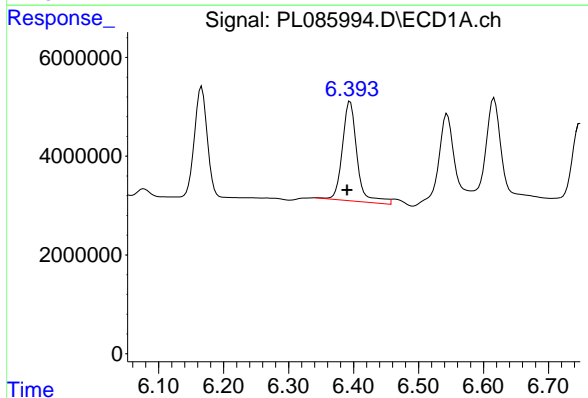
R.T.: 6.166 min
 Delta R.T.: 0.005 min
 Response: 30802138
 Conc: 9.37 ng/ml

Instrument :
 ECD_L
 ClientSampleId :



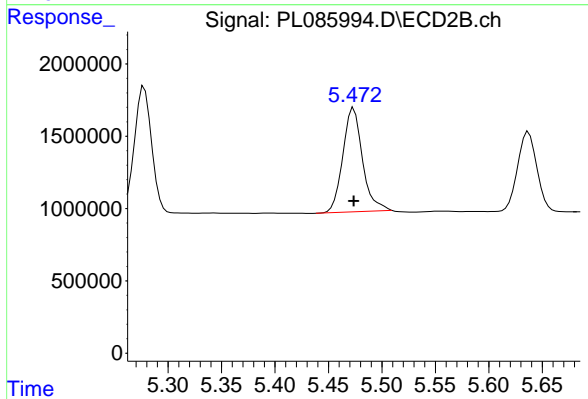
#13 Dieldrin

R.T.: 5.200 min
 Delta R.T.: 0.000 min
 Response: 9114714
 Conc: 9.39 ng/ml



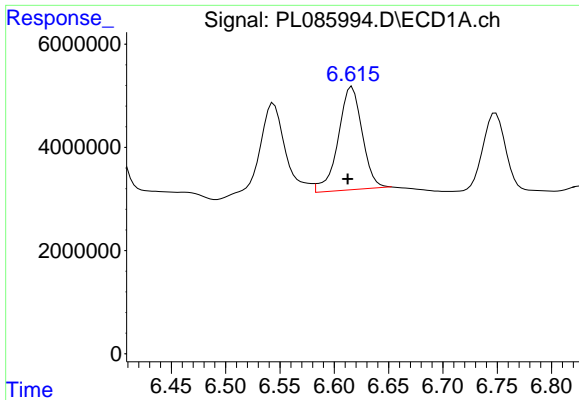
#14 Endrin

R.T.: 6.395 min
 Delta R.T.: 0.005 min
 Response: 31747132
 Conc: 11.14 ng/ml



#14 Endrin

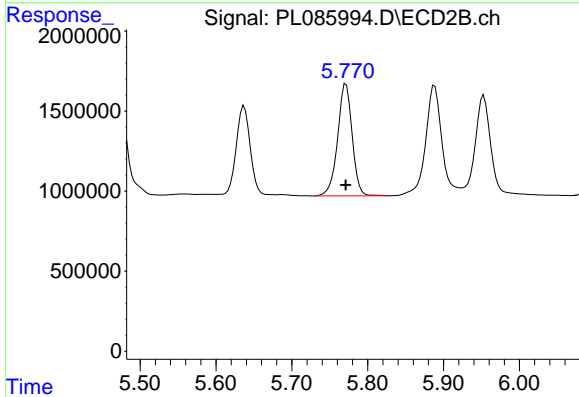
R.T.: 5.474 min
 Delta R.T.: 0.000 min
 Response: 9242752
 Conc: 10.28 ng/ml



#15 Endosulfan II

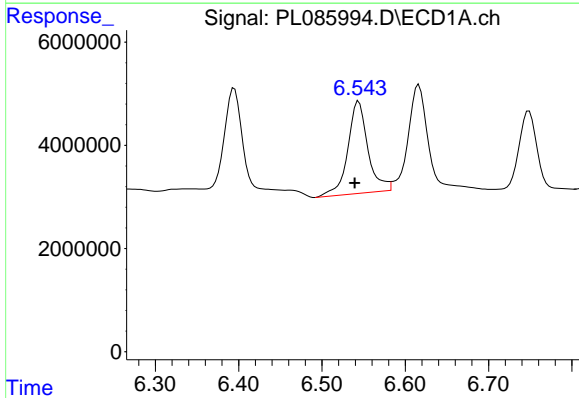
R.T.: 6.616 min
 Delta R.T.: 0.004 min
 Response: 30685178
 Conc: 11.14 ng/ml

Instrument :
 ECD_L
 ClientSampleId :



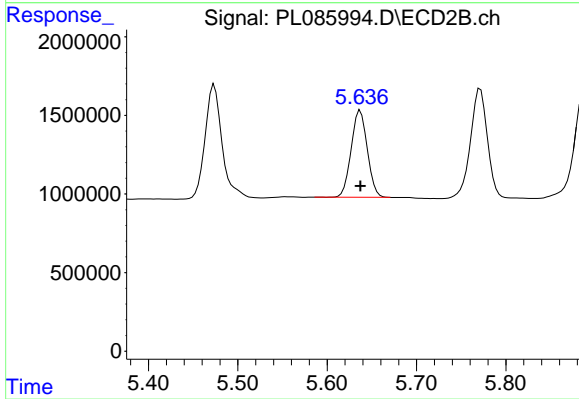
#15 Endosulfan II

R.T.: 5.771 min
 Delta R.T.: 0.000 min
 Response: 9308471
 Conc: 9.79 ng/ml



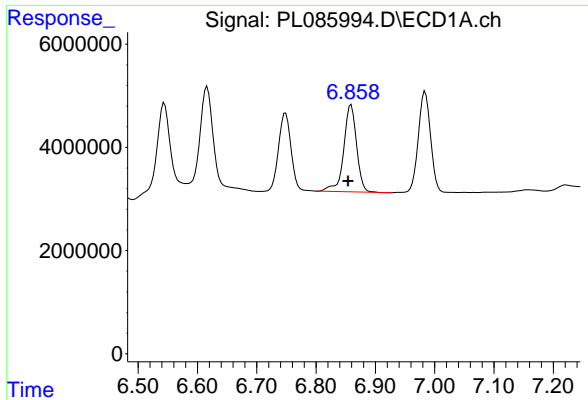
#16 4,4'-DDD

R.T.: 6.544 min
 Delta R.T.: 0.005 min
 Response: 30004920
 Conc: 14.89 ng/ml



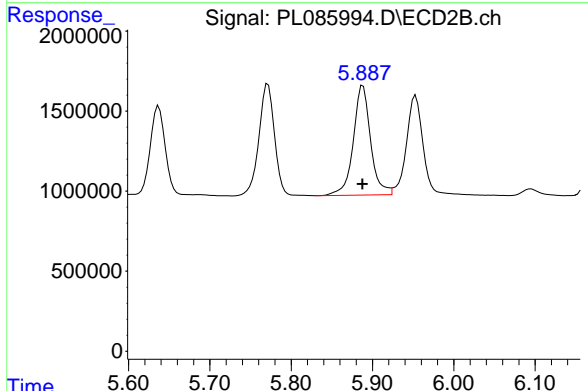
#16 4,4'-DDD

R.T.: 5.637 min
 Delta R.T.: 0.000 min
 Response: 6936314
 Conc: 9.97 ng/ml

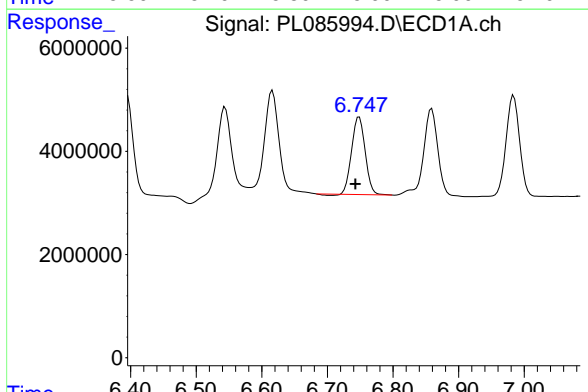


#17 4,4'-DDT
 R.T.: 6.859 min
 Delta R.T.: 0.005 min
 Response: 25491035
 Conc: 10.81 ng/ml

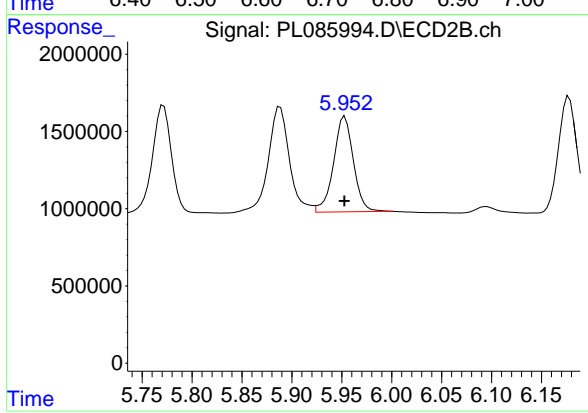
Instrument :
 ECD_L
 ClientSampleId :



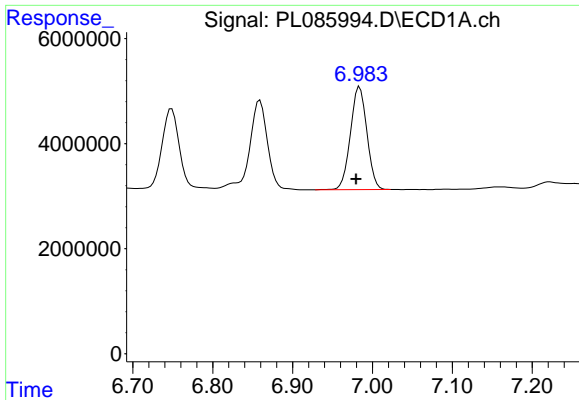
#17 4,4'-DDT
 R.T.: 5.888 min
 Delta R.T.: 0.000 min
 Response: 10136279
 Conc: 12.82 ng/ml



#18 Endrin aldehyde
 R.T.: 6.749 min
 Delta R.T.: 0.006 min
 Response: 21494267
 Conc: 10.61 ng/ml

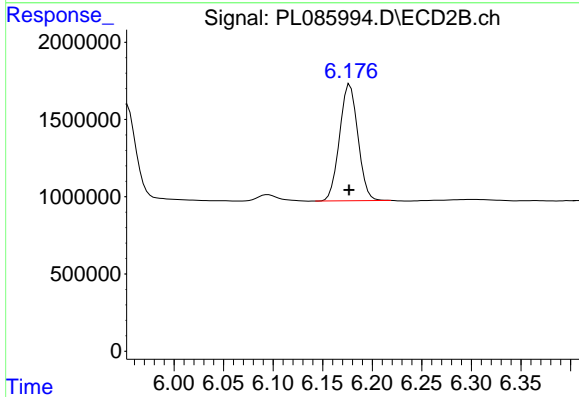


#18 Endrin aldehyde
 R.T.: 5.953 min
 Delta R.T.: 0.000 min
 Response: 8555717
 Conc: 11.47 ng/ml

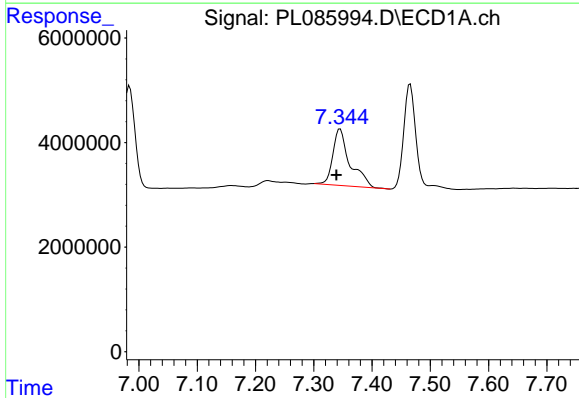


#19 Endosulfan Sulfate
R.T.: 6.984 min
Delta R.T.: 0.005 min
Response: 28104576
Conc: 11.20 ng/ml

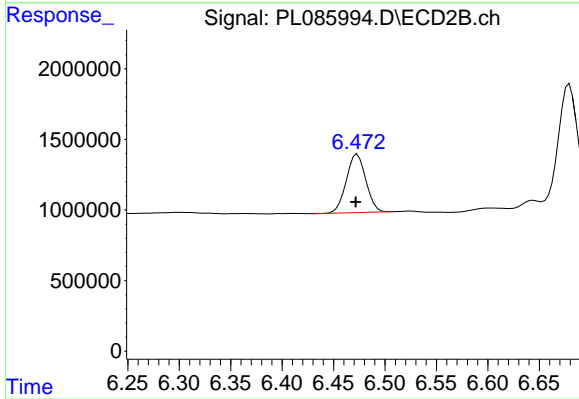
Instrument :
ECD_L
ClientSampleId :



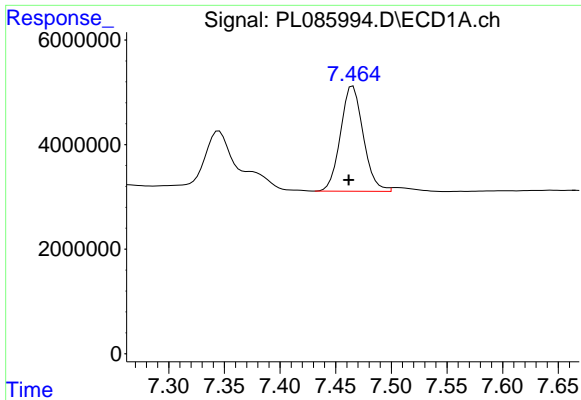
#19 Endosulfan Sulfate
R.T.: 6.177 min
Delta R.T.: 0.000 min
Response: 9751346
Conc: 10.81 ng/ml



#20 Methoxychlor
R.T.: 7.345 min
Delta R.T.: 0.006 min
Response: 22049928
Conc: 15.79 ng/ml



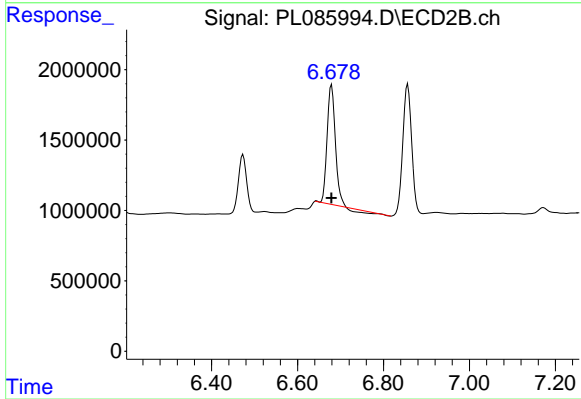
#20 Methoxychlor
R.T.: 6.473 min
Delta R.T.: 0.002 min
Response: 5452507
Conc: 10.36 ng/ml



#21 Endrin ketone

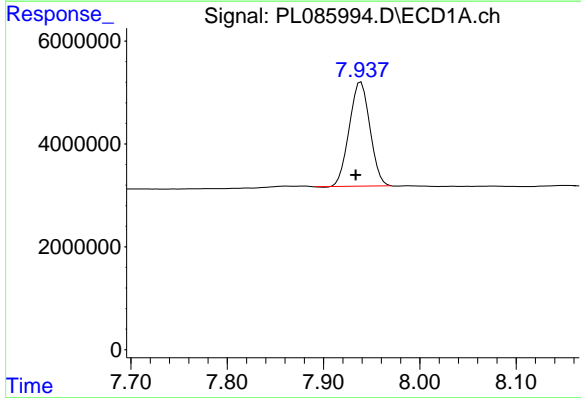
R.T.: 7.465 min
 Delta R.T.: 0.004 min
 Response: 28625254
 Conc: 9.94 ng/ml

Instrument :
 ECD_L
 ClientSampleId :



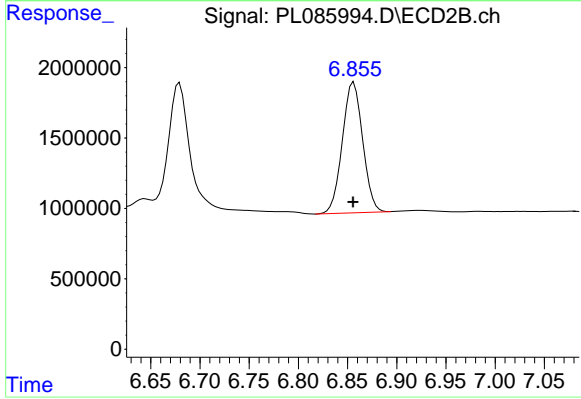
#21 Endrin ketone

R.T.: 6.679 min
 Delta R.T.: 0.000 min
 Response: 10899369
 Conc: 9.48 ng/ml



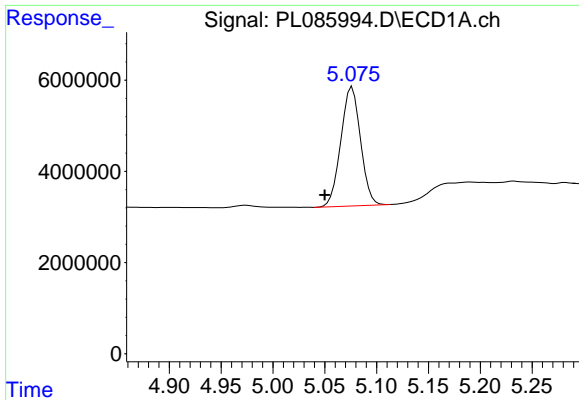
#22 Mirex

R.T.: 7.939 min
 Delta R.T.: 0.005 min
 Response: 30164745
 Conc: 13.62 ng/ml



#22 Mirex

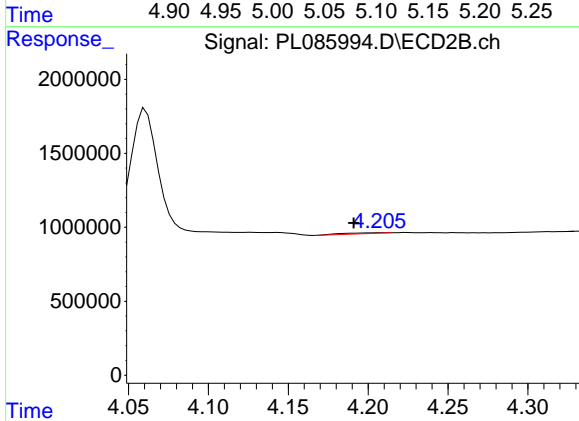
R.T.: 6.856 min
 Delta R.T.: 0.000 min
 Response: 13358633
 Conc: 14.16 ng/ml



#24 Chlordane-2

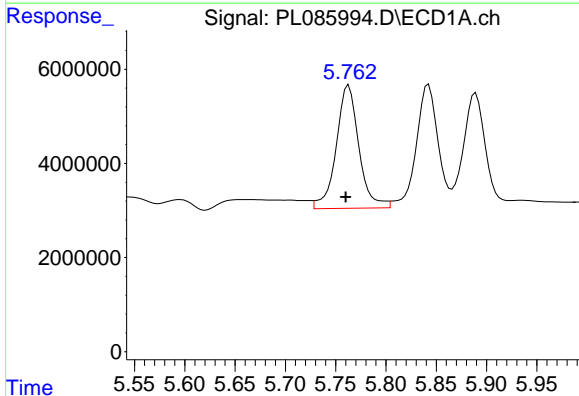
R.T.: 5.077 min
 Delta R.T.: 0.027 min
 Response: 34479390
 Conc: 265.14 ng/ml

Instrument :
 ECD_L
 ClientSampleId :



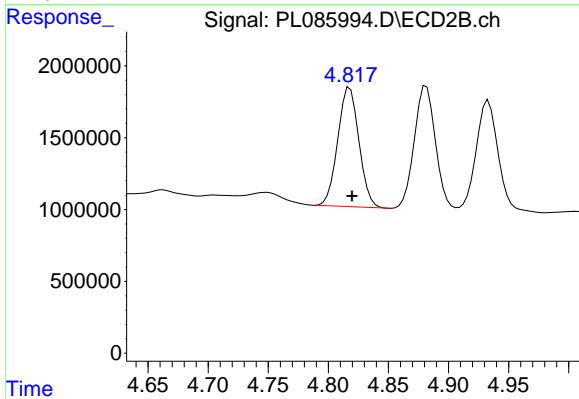
#24 Chlordane-2

R.T.: 4.208 min
 Delta R.T.: 0.017 min
 Response: 105224
 Conc: 2.70 ng/ml



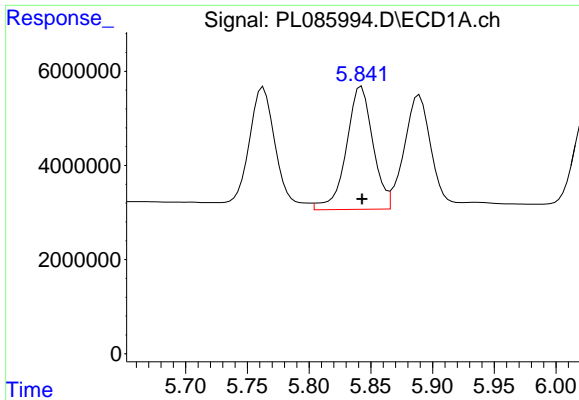
#25 Chlordane-3

R.T.: 5.763 min
 Delta R.T.: 0.003 min
 Response: 40960697
 Conc: 80.28 ng/ml



#25 Chlordane-3

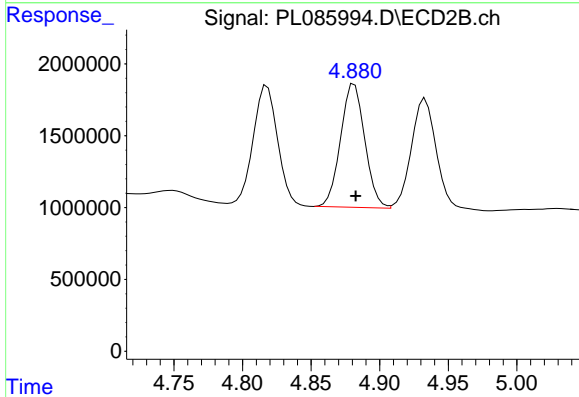
R.T.: 4.818 min
 Delta R.T.: -0.002 min
 Response: 10216102
 Conc: 101.10 ng/ml



#26 Chlordane-4

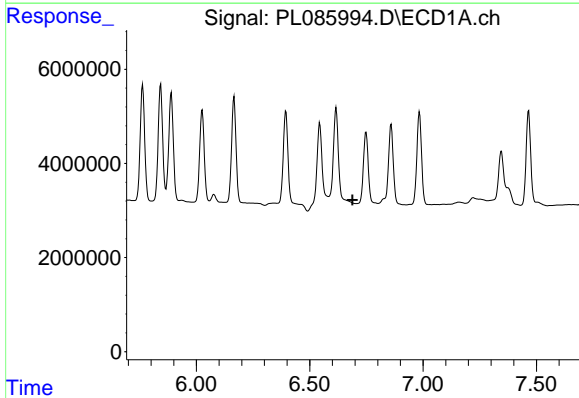
R.T.: 5.842 min
 Delta R.T.: 0.000 min
 Response: 39172912
 Conc: 61.74 ng/ml

Instrument :
 ECD_L
 ClientSampleId :



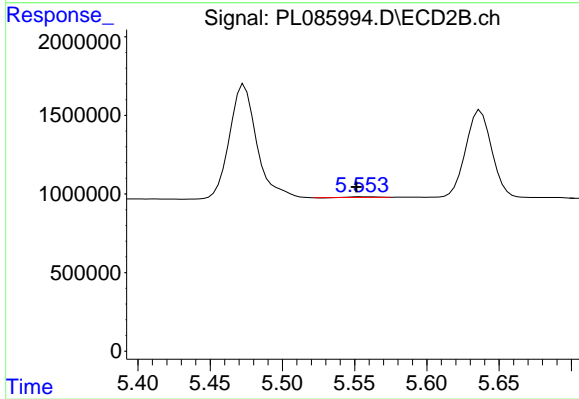
#26 Chlordane-4

R.T.: 4.882 min
 Delta R.T.: -0.001 min
 Response: 10573230
 Conc: 91.32 ng/ml



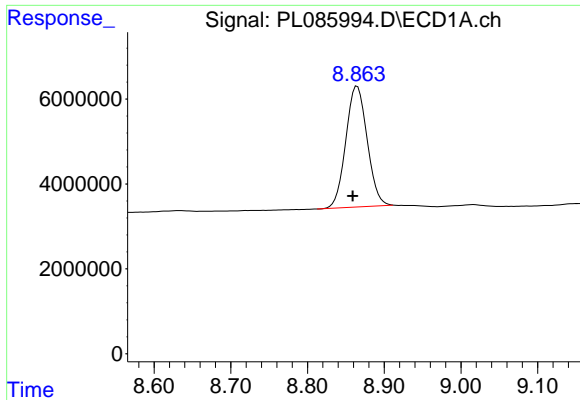
#27 Chlordane-5

R.T.: 0.000 min
 Exp R.T. : 6.689 min
 Response: 0
 Conc: N.D.



#27 Chlordane-5

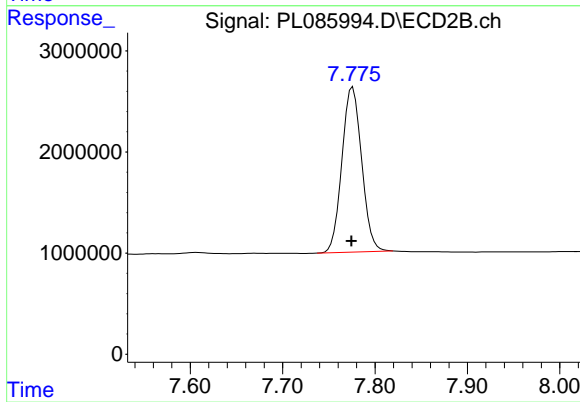
R.T.: 5.555 min
 Delta R.T.: 0.004 min
 Response: 42982
 Conc: 1.54 ng/ml



#28 Decachlorobiphenyl

R.T.: 8.865 min
Delta R.T.: 0.006 min
Response: 55402473
Conc: 25.44 ng/ml

Instrument :
ECD_L
ClientSampleId :



#28 Decachlorobiphenyl

R.T.: 7.776 min
Delta R.T.: 0.001 min
Response: 24270075
Conc: 26.30 ng/ml