

Data Path : Z:\pestpcbsrv\HPCHEM1\ECD\_L\Data\PL101920\  
 Data File : PL062420.D  
 Signal(s) : Signal #1: ECD1A.ch Signal #2: ECD2B.ch  
 Acq On : 19 Oct 2020 10:39  
 Operator : DD\AJ  
 Sample : PEM  
 Misc :  
 ALS Vial : 3 Sample Multiplier: 1

Instrument :  
 ECD\_L  
 ClientSampleId :

Integration File signal 1: autoint1.e  
 Integration File signal 2: autoint2.e  
 Quant Time: Oct 20 07:02:24 2020  
 Quant Method : Z:\pestpcbsrv\HPCHEM1\ECD\_L\methods\PL101920.M  
 Quant Title : GC Extractables  
 QLast Update : Tue Oct 20 07:00:50 2020  
 Response via : Initial Calibration  
 Integrator: ChemStation

Volume Inj. : 1 µl  
 Signal #1 Phase : ZB-MR2 Signal #2 Phase: ZB-MR1  
 Signal #1 Info : 30M x 0.32mm x0.2 Signal #2 Info : 30M x 0.32mm x0.5µm

Compound	RT#1	RT#2	Resp#1	Resp#2	ng/ml	ng/ml
-----						
System Monitoring Compounds						
1) SA Tetrachlo...	3.411	3.951	33555186	45268139	19.475	19.653
28) SA Decachlor...	8.122	8.989	34667330	38926874	19.750	19.631
Target Compounds						
2) A alpha-BHC	3.843	4.337	21729958	28786554	8.687	8.551
3) MA gamma-BHC...	4.122	4.620	20642160	26831609	9.192	8.488
6) B beta-BHC	4.371	4.791	9207015	12430711	9.871	8.609
14) MA Endrin	5.930	6.643	75801833	98753093	46.694	47.195
17) MA 4,4'-DDT	6.298	7.066	134.8E6	179.5E6	100.360	94.736
20) A Methoxychlor	6.841	7.526	198.4E6	244.2E6	233.843	220.123
21) B Endrin ke...	7.066	0.000	1646344	0	0.889	N.D. #
22) Mirex	7.277f	0.000	779033	0	0.531	N.D. #
-----						

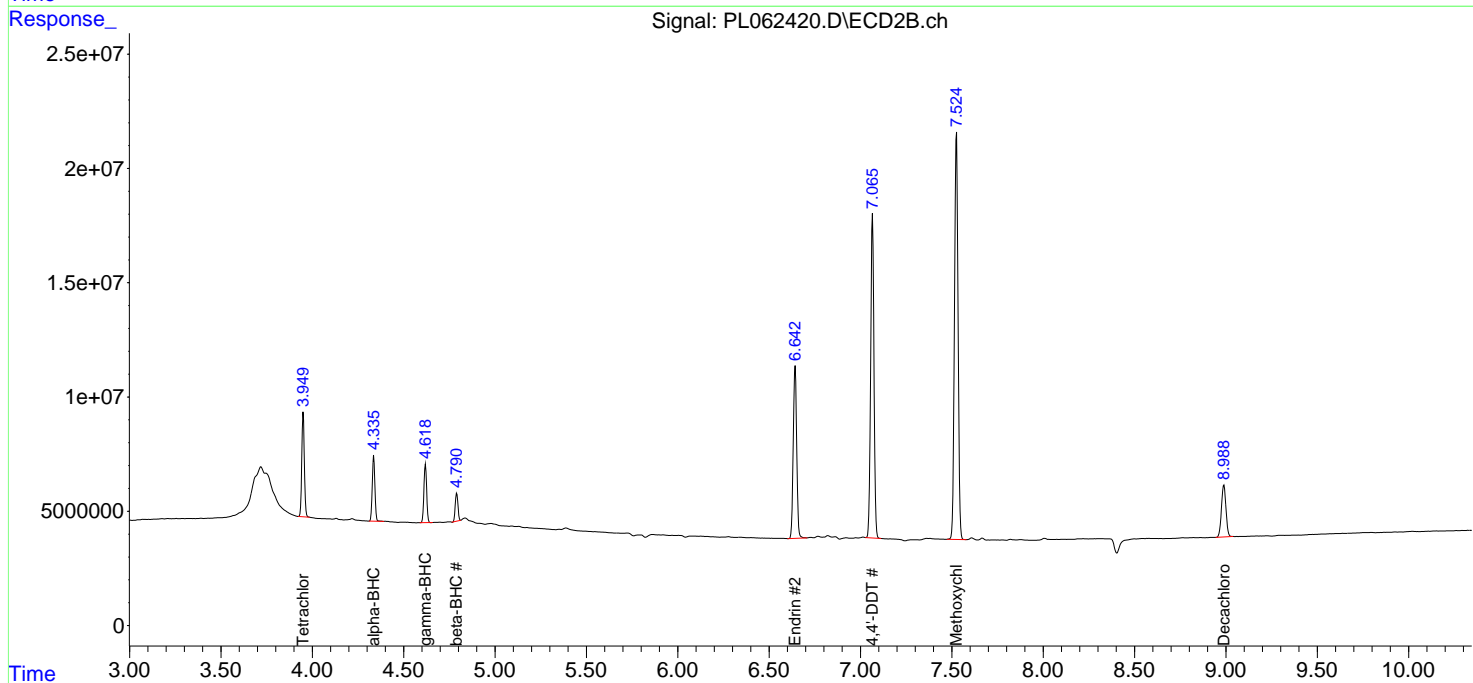
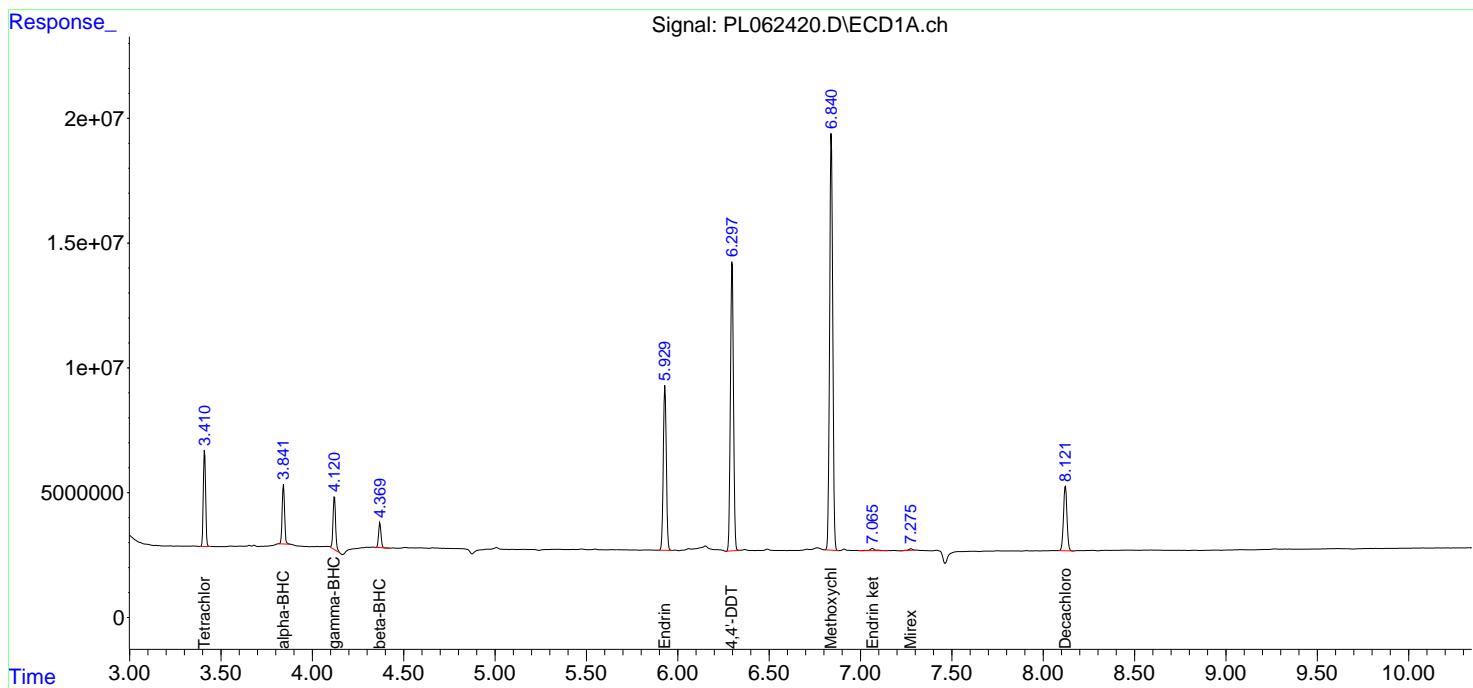
(f)=RT Delta > 1/2 Window (#)=Amounts differ by > 25% (m)=manual int.

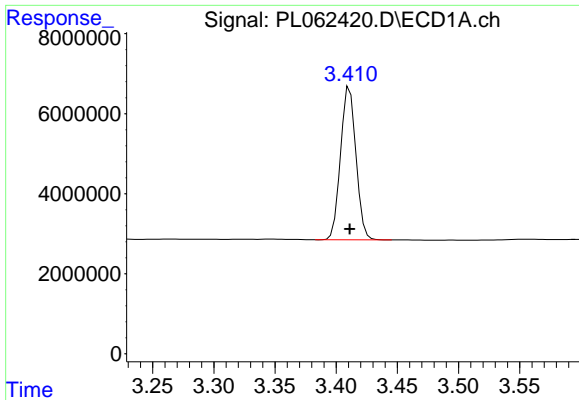
Data Path : Z:\pestpcbsrv\HPCHEM1\ECD\_L\Data\PL101920\  
 Data File : PL062420.D  
 Signal(s) : Signal #1: ECD1A.ch Signal #2: ECD2B.ch  
 Acq On : 19 Oct 2020 10:39  
 Operator : DD\AJ  
 Sample : PEM  
 Misc :  
 ALS Vial : 3 Sample Multiplier: 1

Instrument :  
 ECD\_L  
 ClientSampled :

Integration File signal 1: autoint1.e  
 Integration File signal 2: autoint2.e  
 Quant Time: Oct 20 07:02:24 2020  
 Quant Method : Z:\pestpcbsrv\HPCHEM1\ECD\_L\methods\PL101920.M  
 Quant Title : GC Extractables  
 QLast Update : Tue Oct 20 07:00:50 2020  
 Response via : Initial Calibration  
 Integrator: ChemStation

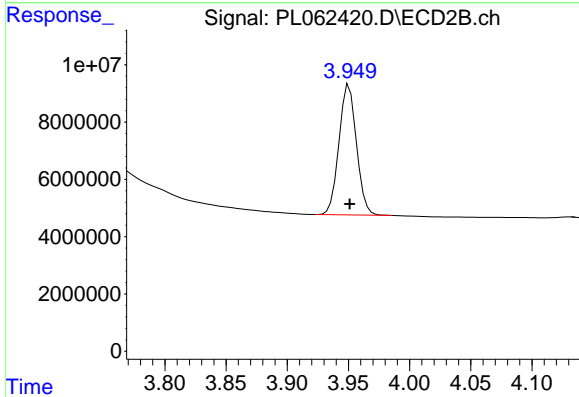
Volume Inj. : 1 µl  
 Signal #1 Phase : ZB-MR2 Signal #2 Phase: ZB-MR1  
 Signal #1 Info : 30M x 0.32mm x0.2 Signal #2 Info : 30M x 0.32mm x0.5µm



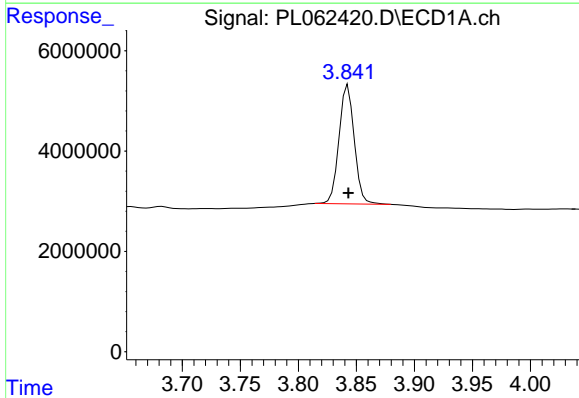


#1 Tetrachloro-m-xylene  
R.T.: 3.411 min  
Delta R.T.: 0.000 min  
Response: 33555186  
Conc: 19.48 ng/ml

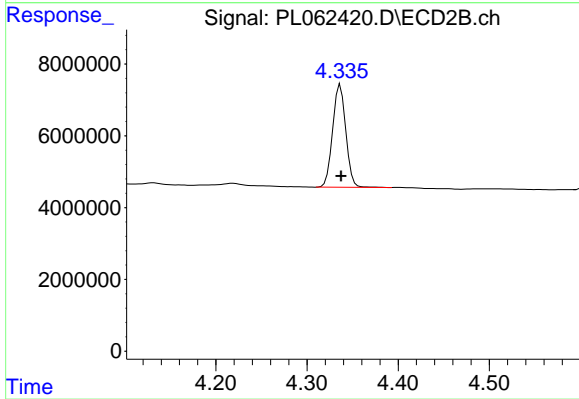
Instrument :  
ECD\_L  
ClientSampleId :



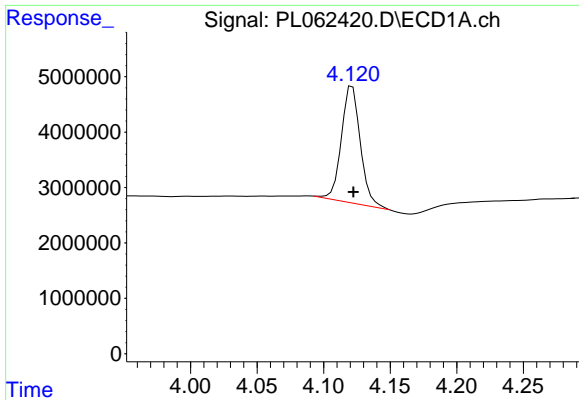
#1 Tetrachloro-m-xylene  
R.T.: 3.951 min  
Delta R.T.: 0.000 min  
Response: 45268139  
Conc: 19.65 ng/ml



#2 alpha-BHC  
R.T.: 3.843 min  
Delta R.T.: 0.000 min  
Response: 21729958  
Conc: 8.69 ng/ml

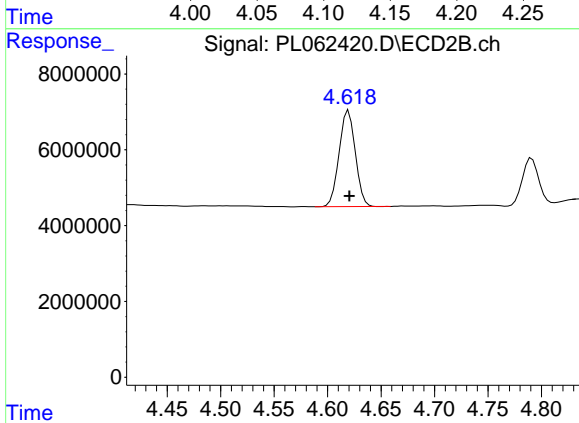


#2 alpha-BHC  
R.T.: 4.337 min  
Delta R.T.: 0.000 min  
Response: 28786554  
Conc: 8.55 ng/ml

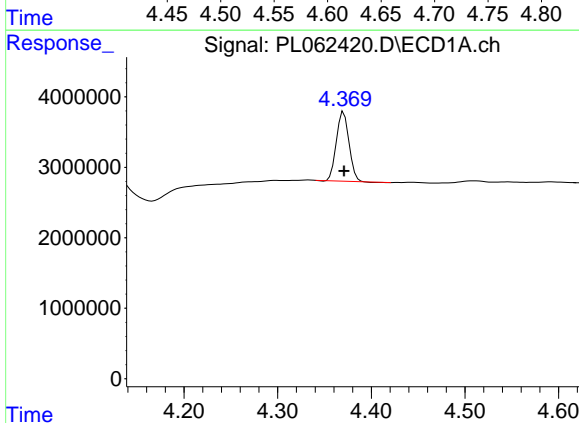


#3 gamma-BHC (Lindane)  
 R.T.: 4.122 min  
 Delta R.T.: 0.000 min  
 Response: 20642160  
 Conc: 9.19 ng/ml

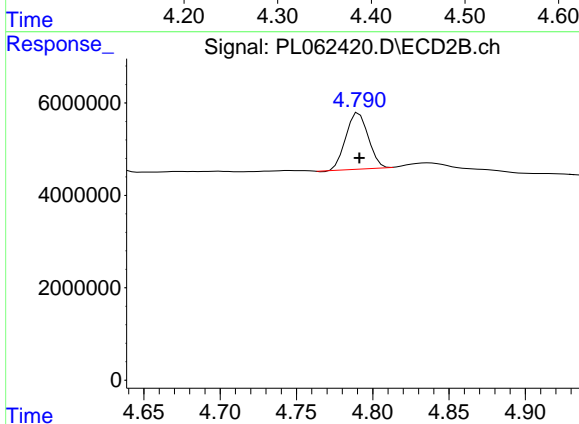
Instrument :  
 ECD\_L  
 ClientSampleId :



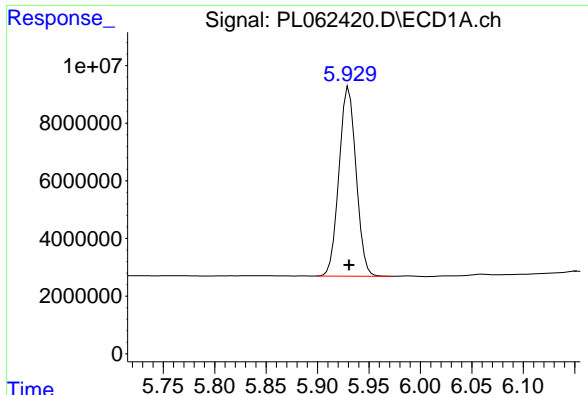
#3 gamma-BHC (Lindane)  
 R.T.: 4.620 min  
 Delta R.T.: 0.000 min  
 Response: 26831609  
 Conc: 8.49 ng/ml



#6 beta-BHC  
 R.T.: 4.371 min  
 Delta R.T.: 0.000 min  
 Response: 9207015  
 Conc: 9.87 ng/ml



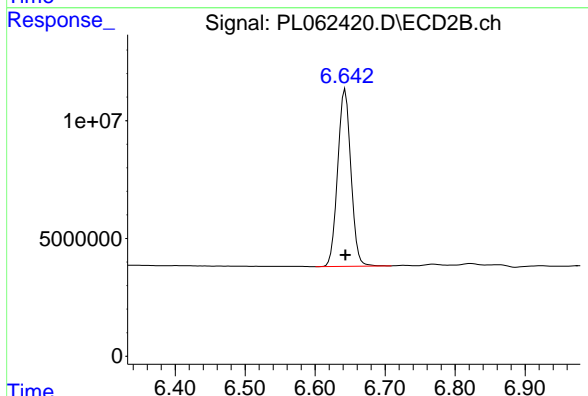
#6 beta-BHC  
 R.T.: 4.791 min  
 Delta R.T.: 0.000 min  
 Response: 12430711  
 Conc: 8.61 ng/ml



#14 Endrin

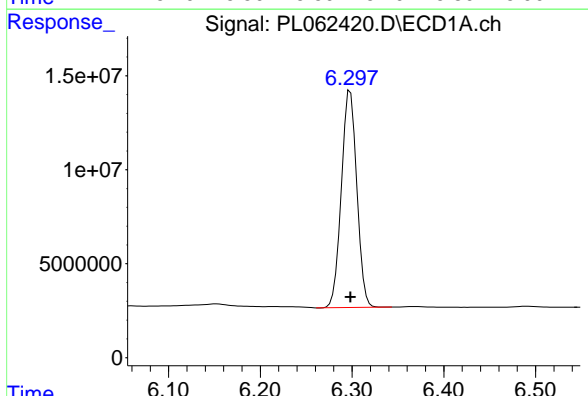
R.T.: 5.930 min  
 Delta R.T.: 0.000 min  
 Response: 75801833  
 Conc: 46.69 ng/ml

Instrument :  
 ECD\_L  
 ClientSampled :



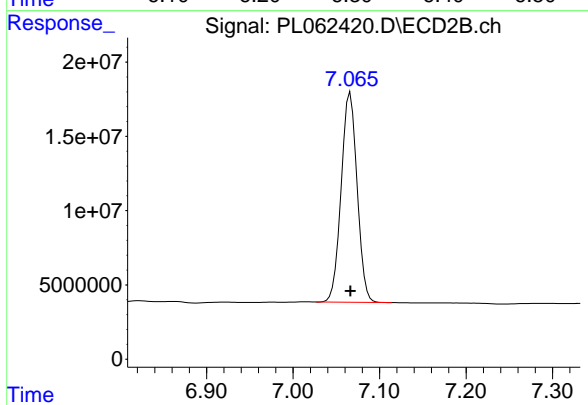
#14 Endrin

R.T.: 6.643 min  
 Delta R.T.: 0.000 min  
 Response: 98753093  
 Conc: 47.20 ng/ml



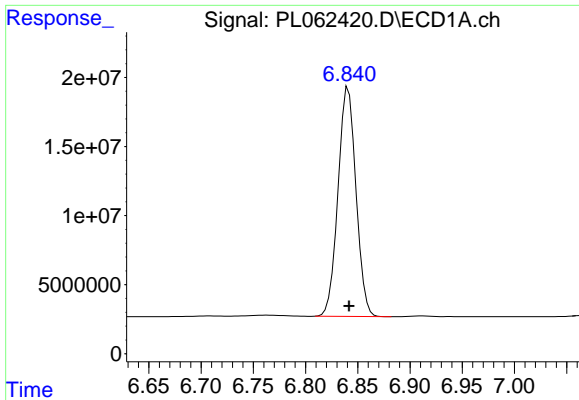
#17 4,4'-DDT

R.T.: 6.298 min  
 Delta R.T.: 0.000 min  
 Response: 134827333  
 Conc: 100.36 ng/ml



#17 4,4'-DDT

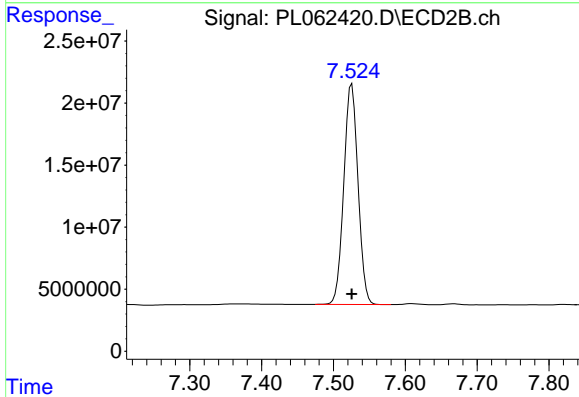
R.T.: 7.066 min  
 Delta R.T.: 0.000 min  
 Response: 179548226  
 Conc: 94.74 ng/ml



#20 Methoxychlor

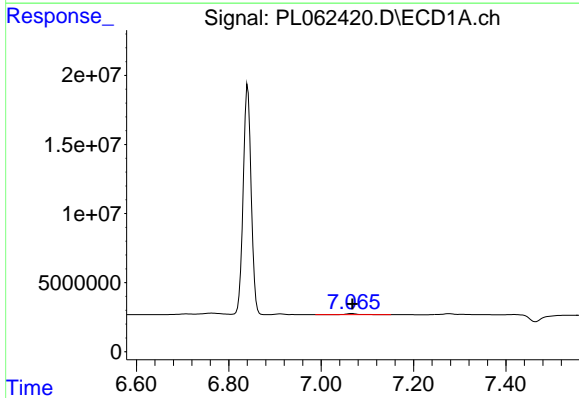
R.T.: 6.841 min  
 Delta R.T.: 0.000 min  
 Response: 198425416  
 Conc: 233.84 ng/ml

Instrument :  
 ECD\_L  
 ClientSampled :



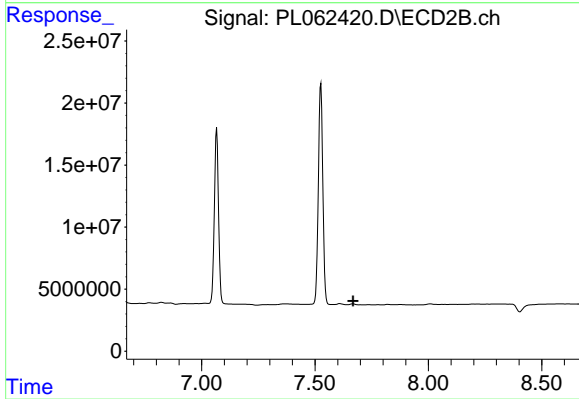
#20 Methoxychlor

R.T.: 7.526 min  
 Delta R.T.: 0.000 min  
 Response: 244181001  
 Conc: 220.12 ng/ml



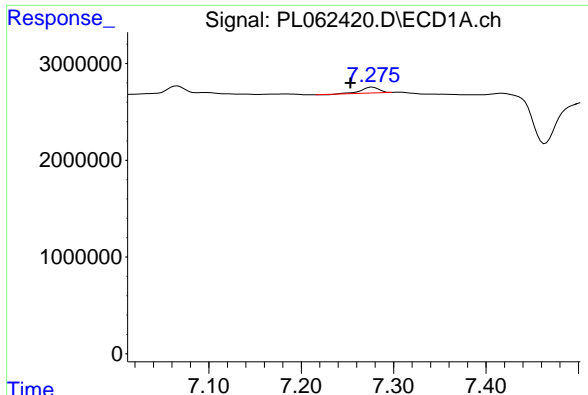
#21 Endrin ketone

R.T.: 7.066 min  
 Delta R.T.: -0.002 min  
 Response: 1646344  
 Conc: 0.89 ng/ml



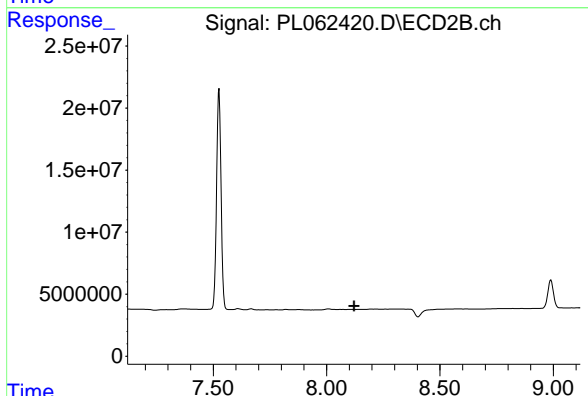
#21 Endrin ketone

R.T.: 0.000 min  
 Exp R.T. : 7.668 min  
 Response: 0  
 Conc: N.D.

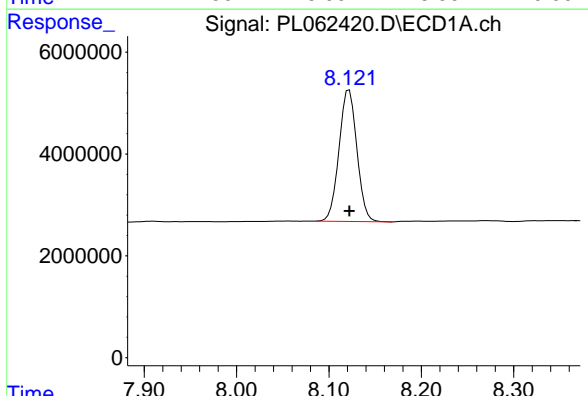


#22 Mirex  
 R.T.: 7.277 min  
 Delta R.T.: 0.023 min  
 Response: 779033  
 Conc: 0.53 ng/ml

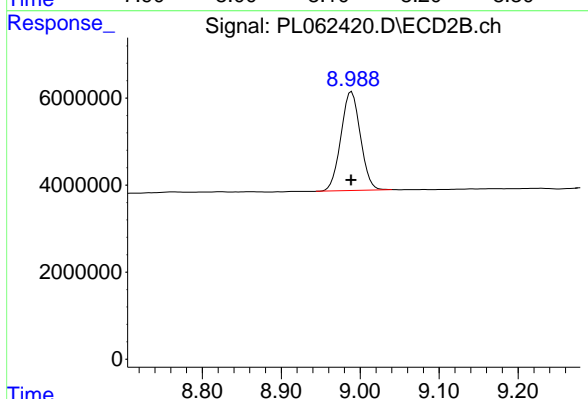
Instrument :  
 ECD\_L  
 ClientSampled :



#22 Mirex  
 R.T.: 0.000 min  
 Exp R.T. : 8.121 min  
 Response: 0  
 Conc: N.D.



#28 Decachlorobiphenyl  
 R.T.: 8.122 min  
 Delta R.T.: 0.000 min  
 Response: 34667330  
 Conc: 19.75 ng/ml



#28 Decachlorobiphenyl  
 R.T.: 8.989 min  
 Delta R.T.: 0.000 min  
 Response: 38926874  
 Conc: 19.63 ng/ml