

Data Path : Z:\pestpcbsrv\HPCHEM1\ECD\_L\Data\PL102119\  
 Data File : PL053522.D  
 Signal(s) : Signal #1: ECD1A.ch Signal #2: ECD2B.ch  
 Acq On : 21 Oct 2019 14:53  
 Operator : SG\AJ  
 Sample : K5111-07  
 Misc : TOX LOD 50 PPB  
 ALS Vial : 18 Sample Multiplier: 1

Instrument :  
 ECD\_L  
 ClientSampleId :

Integration File signal 1: autoint1.e  
 Integration File signal 2: autoint2.e  
 Quant Time: Oct 22 01:29:57 2019  
 Quant Method : Z:\pestpcbsrv\HPCHEM1\ECD\_L\methods\LTX101919.M  
 Quant Title : GC Extractables  
 QLast Update : Fri Oct 18 15:50:08 2019  
 Response via : Initial Calibration  
 Integrator: ChemStation

Volume Inj. : 2 µl  
 Signal #1 Phase : Rtx-CLPesticide 1 Signal #2 Phase: Rtx-CLPesticide 1  
 Signal #1 Info : 30M x 0.32mm x0.3 Signal #2 Info : 30M x 0.32mm x 0.25µm

Compound	RT#1	RT#2	Resp#1	Resp#2	ng/ml	ng/ml
-----						
System Monitoring Compounds						
1) SA Tetrachlo...	3.544	4.045	189.3E6	45514619	19.368	20.449
7) SA Decachlor...	8.330	9.123	190.4E6	54146983	21.207	21.740
Target Compounds						
2) Toxaphene-1	5.824	6.438	10537433	1470829	158.506	128.481
3) Toxaphene-2	6.430	7.134	18242643	850296	116.591	41.285 #
4) Toxaphene-3	6.820	7.209	10677104	2880449	198.379	50.864 #
5) Toxaphene-4	7.100	7.295	8133840	1663860	139.016	48.144 #
6) Toxaphene-5	7.165	7.710	13914480	1604664	86.041	52.260 #
-----						

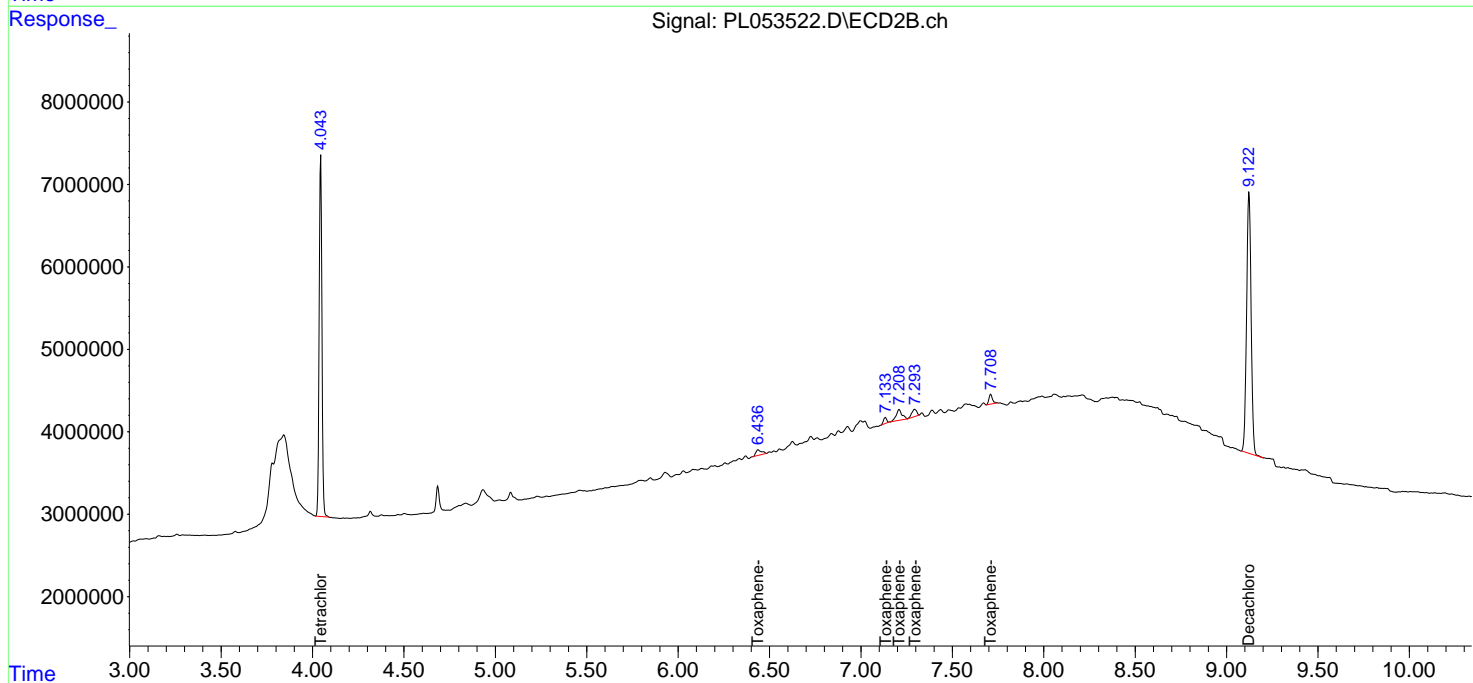
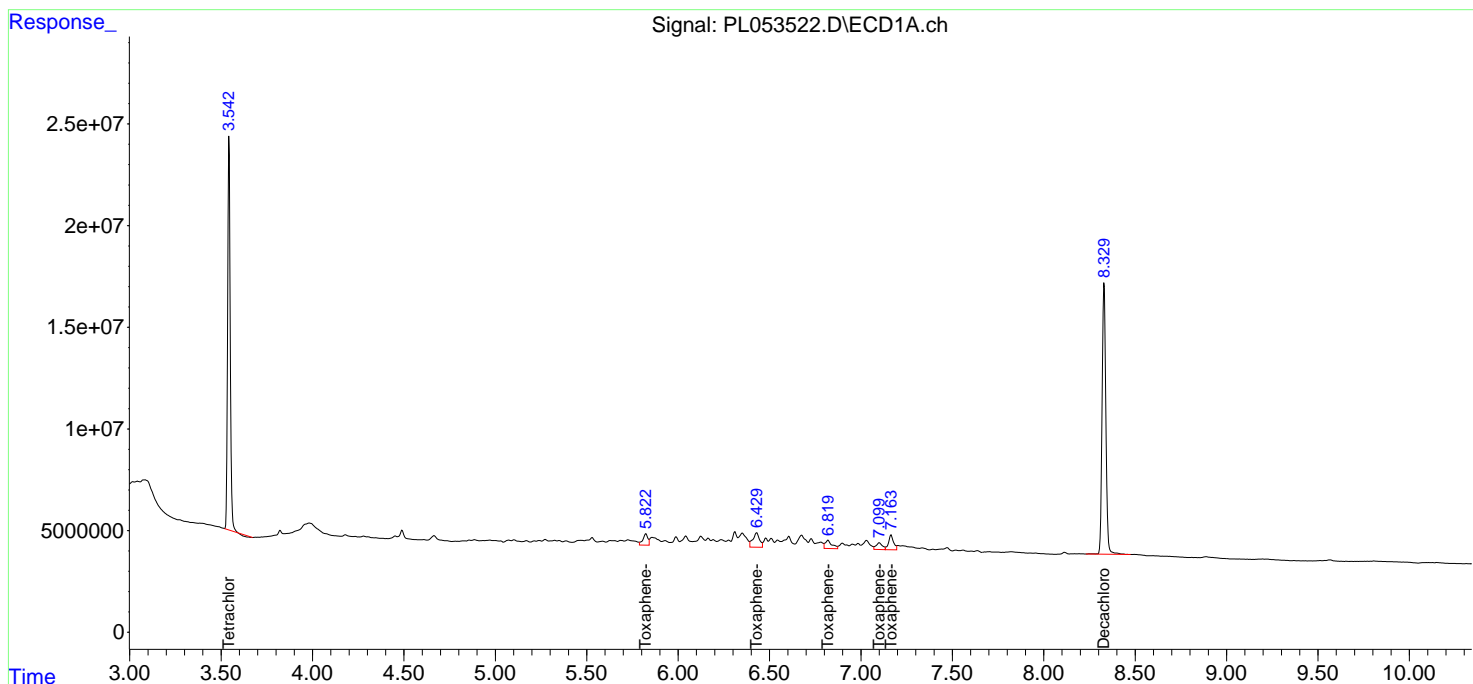
(f)=RT Delta > 1/2 Window (#)=Amounts differ by > 25% (m)=manual int.

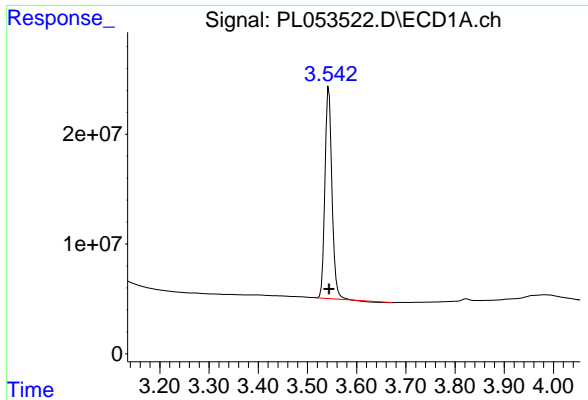
Data Path : Z:\pestpcbsrv\HPCHEM1\ECD\_L\Data\PL102119\  
 Data File : PL053522.D  
 Signal(s) : Signal #1: ECD1A.ch Signal #2: ECD2B.ch  
 Acq On : 21 Oct 2019 14:53  
 Operator : SG\AJ  
 Sample : K5111-07  
 Misc : TOX LOD 50 PPB  
 ALS Vial : 18 Sample Multiplier: 1

Instrument :  
 ECD\_L  
 ClientSampled :

Integration File signal 1: autoint1.e  
 Integration File signal 2: autoint2.e  
 Quant Time: Oct 22 01:29:57 2019  
 Quant Method : Z:\pestpcbsrv\HPCHEM1\ECD\_L\methods\LTX101919.M  
 Quant Title : GC Extractables  
 QLast Update : Fri Oct 18 15:50:08 2019  
 Response via : Initial Calibration  
 Integrator: ChemStation

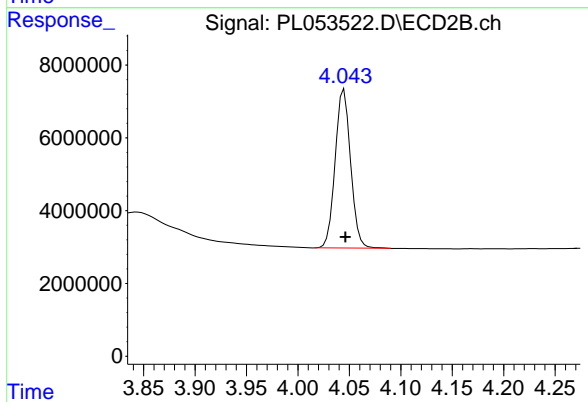
Volume Inj. : 2 µl  
 Signal #1 Phase : Rtx-CLPesticide 1 Signal #2 Phase: Rtx-CLPesticide 1  
 Signal #1 Info : 30M x 0.32mm x0.3 Signal #2 Info : 30M x 0.32mm x 0.25µm



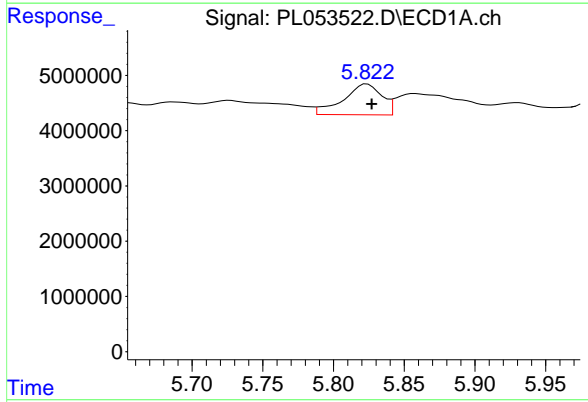


#1 Tetrachloro-m-xylene  
 R.T.: 3.544 min  
 Delta R.T.: 0.000 min  
 Response: 189284437  
 Conc: 19.37 ng/ml

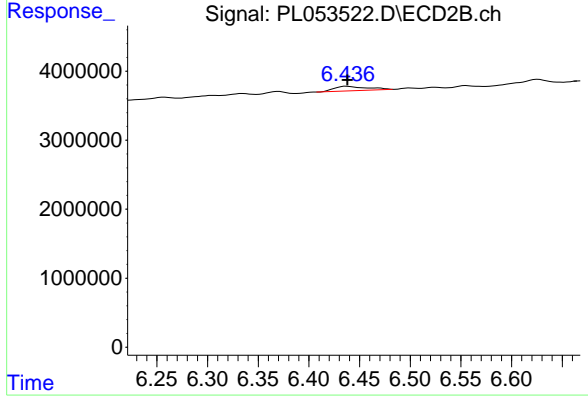
Instrument :  
 ECD\_L  
 ClientSampleId :



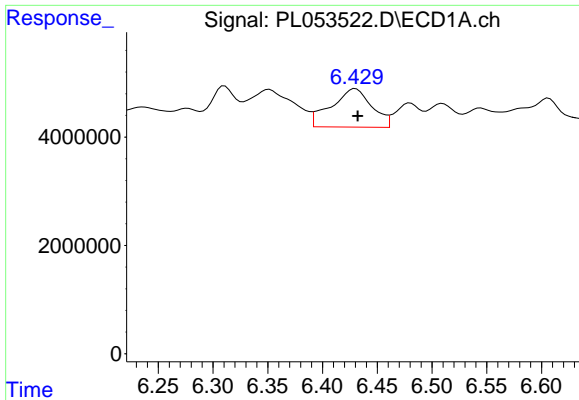
#1 Tetrachloro-m-xylene  
 R.T.: 4.045 min  
 Delta R.T.: -0.001 min  
 Response: 45514619  
 Conc: 20.45 ng/ml



#2 Toxaphene-1  
 R.T.: 5.824 min  
 Delta R.T.: -0.003 min  
 Response: 10537433  
 Conc: 158.51 ng/ml



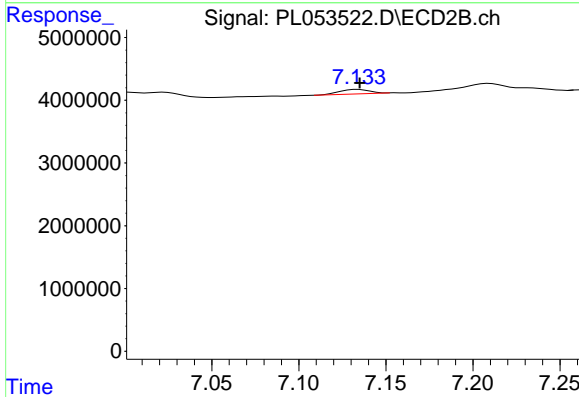
#2 Toxaphene-1  
 R.T.: 6.438 min  
 Delta R.T.: 0.000 min  
 Response: 1470829  
 Conc: 128.48 ng/ml



#3 Toxaphene-2

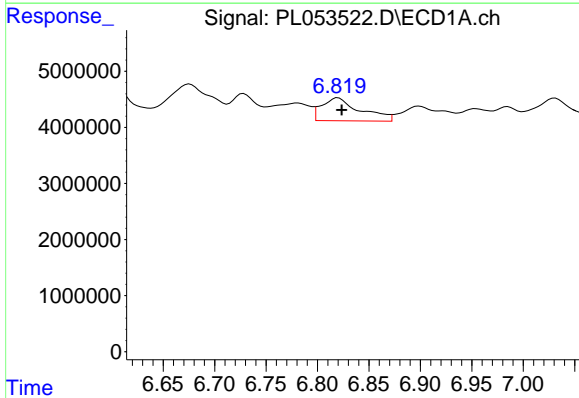
R.T.: 6.430 min  
 Delta R.T.: -0.002 min  
 Response: 18242643  
 Conc: 116.59 ng/ml

Instrument :  
 ECD\_L  
 ClientSampled :



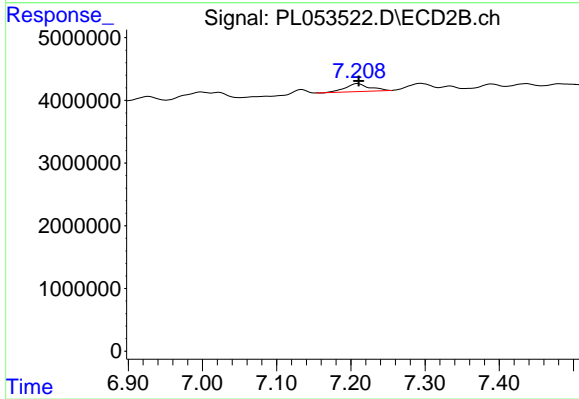
#3 Toxaphene-2

R.T.: 7.134 min  
 Delta R.T.: 0.000 min  
 Response: 850296  
 Conc: 41.29 ng/ml



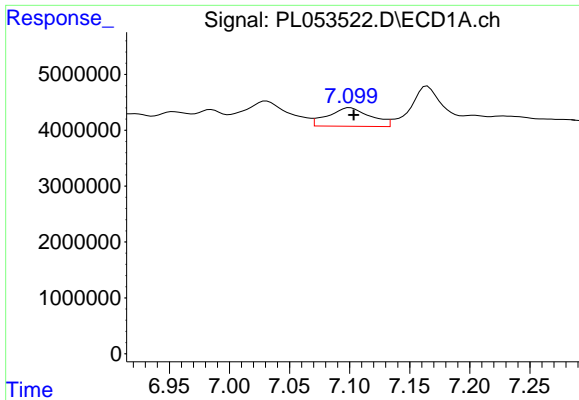
#4 Toxaphene-3

R.T.: 6.820 min  
 Delta R.T.: -0.004 min  
 Response: 10677104  
 Conc: 198.38 ng/ml



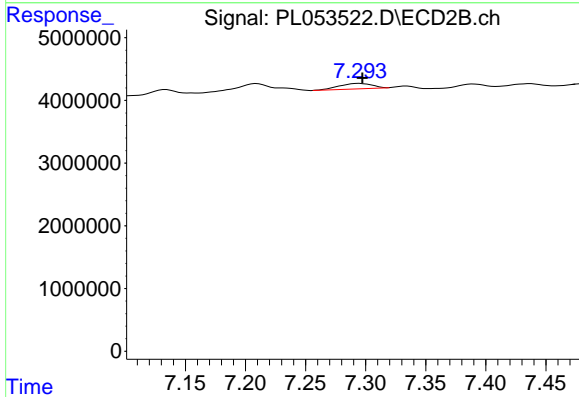
#4 Toxaphene-3

R.T.: 7.209 min  
 Delta R.T.: -0.001 min  
 Response: 2880449  
 Conc: 50.86 ng/ml

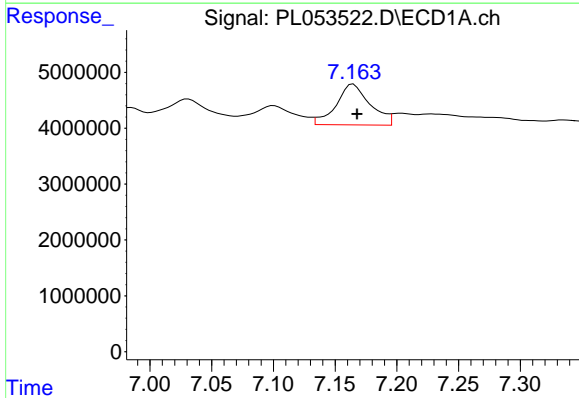


#5 Toxaphene-4  
 R.T.: 7.100 min  
 Delta R.T.: -0.003 min  
 Response: 8133840  
 Conc: 139.02 ng/ml

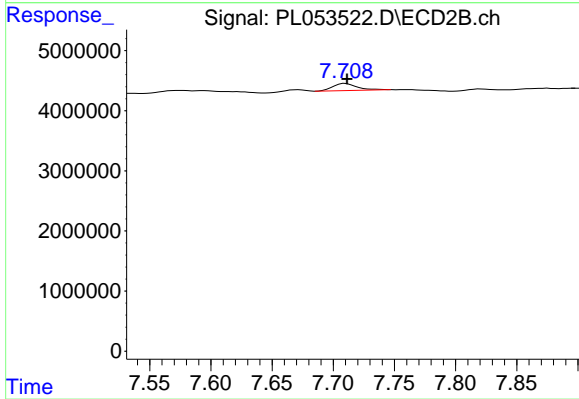
Instrument :  
 ECD\_L  
 ClientSampleId :



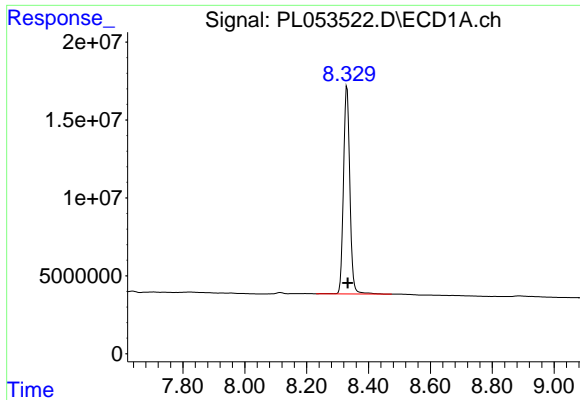
#5 Toxaphene-4  
 R.T.: 7.295 min  
 Delta R.T.: -0.003 min  
 Response: 1663860  
 Conc: 48.14 ng/ml



#6 Toxaphene-5  
 R.T.: 7.165 min  
 Delta R.T.: -0.003 min  
 Response: 13914480  
 Conc: 86.04 ng/ml



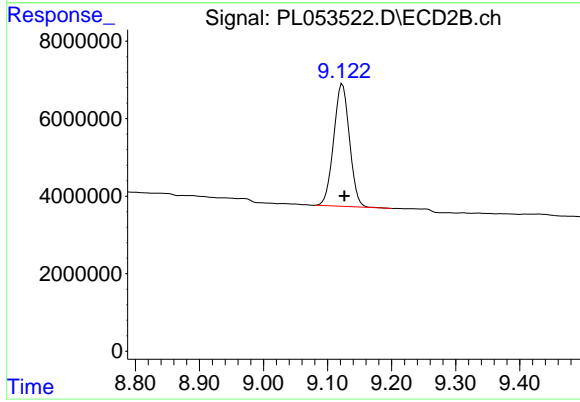
#6 Toxaphene-5  
 R.T.: 7.710 min  
 Delta R.T.: -0.001 min  
 Response: 1604664  
 Conc: 52.26 ng/ml



#7 Decachlorobiphenyl

R.T.: 8.330 min  
Delta R.T.: -0.003 min  
Response: 190375249  
Conc: 21.21 ng/ml

Instrument :  
ECD\_L  
ClientSampleId :



#7 Decachlorobiphenyl

R.T.: 9.123 min  
Delta R.T.: -0.003 min  
Response: 54146983  
Conc: 21.74 ng/ml