

Data Path : Z:\pestpcbsrv\HPCHEM1\ECD_L\Data\PL102119\
 Data File : PL053549.D
 Signal(s) : Signal #1: ECD1A.ch Signal #2: ECD2B.ch
 Acq On : 21 Oct 2019 21:13
 Operator : SG\AJ
 Sample : K5147-05
 Misc :
 ALS Vial : 39 Sample Multiplier: 1

Instrument :
 ECD_L
 ClientSampleId :

Integration File signal 1: autoint1.e
 Integration File signal 2: autoint2.e
 Quant Time: Oct 22 01:06:18 2019
 Quant Method : Z:\pestpcbsrv\HPCHEM1\ECD_L\methods\PL101919.M
 Quant Title : GC Extractables
 QLast Update : Fri Oct 18 13:56:08 2019
 Response via : Initial Calibration
 Integrator: ChemStation

Volume Inj. : 1 µl
 Signal #1 Phase : ZB-MR2 Signal #2 Phase: ZB-MR1
 Signal #1 Info : 30M x 0.32mm x0.2 Signal #2 Info : 30M x 0.32mm x0.5µm

Compound	RT#1	RT#2	Resp#1	Resp#2	ng/ml	ng/ml

System Monitoring Compounds						
1) SA Tetrachlo...	3.543	4.044	121.7E6	29214097	11.229	11.675
28) SA Decachlor...	8.329	9.122	106.1E6	32003025	10.816	11.365
Target Compounds						
2) A alpha-BHC	0.000	4.461f	0	1547190	N.D.	0.448 #
6) B beta-BHC	0.000	4.918f	0	741955	N.D.	0.480 #
8) B Heptachlo...	0.000	5.931	0	1947448	N.D.	0.668 #
9) A Endosulfan I	0.000	6.276	0	6813176	N.D.	2.513 #
10) B gamma-Chl...	0.000	6.156	0	4118911	N.D.	1.412 #
11) B alpha-Chl...	0.000	6.229	0	14666010	N.D.	5.024 #
12) B 4,4'-DDE	0.000	6.380	0	8700145	N.D.	3.089 #
14) MA Endrin	0.000	6.777f	0	541036	N.D.	0.223 #
17) MA 4,4'-DDT	0.000	7.173	0	2760173	N.D.	1.194 #
18) B Endrin a...	0.000	7.083	0	1647769	N.D.	0.750 #
23) Chlordane-1	0.000	5.046	0	366139	N.D.	4.366 #
24) Chlordane-2	4.933	5.506	9067233	16241627	23.532	165.357 #
25) Chlordane-3	0.000	6.156	0	4118911	N.D.	11.278 #
26) Chlordane-4	0.000	6.229	0	14666010	N.D.	32.668 #

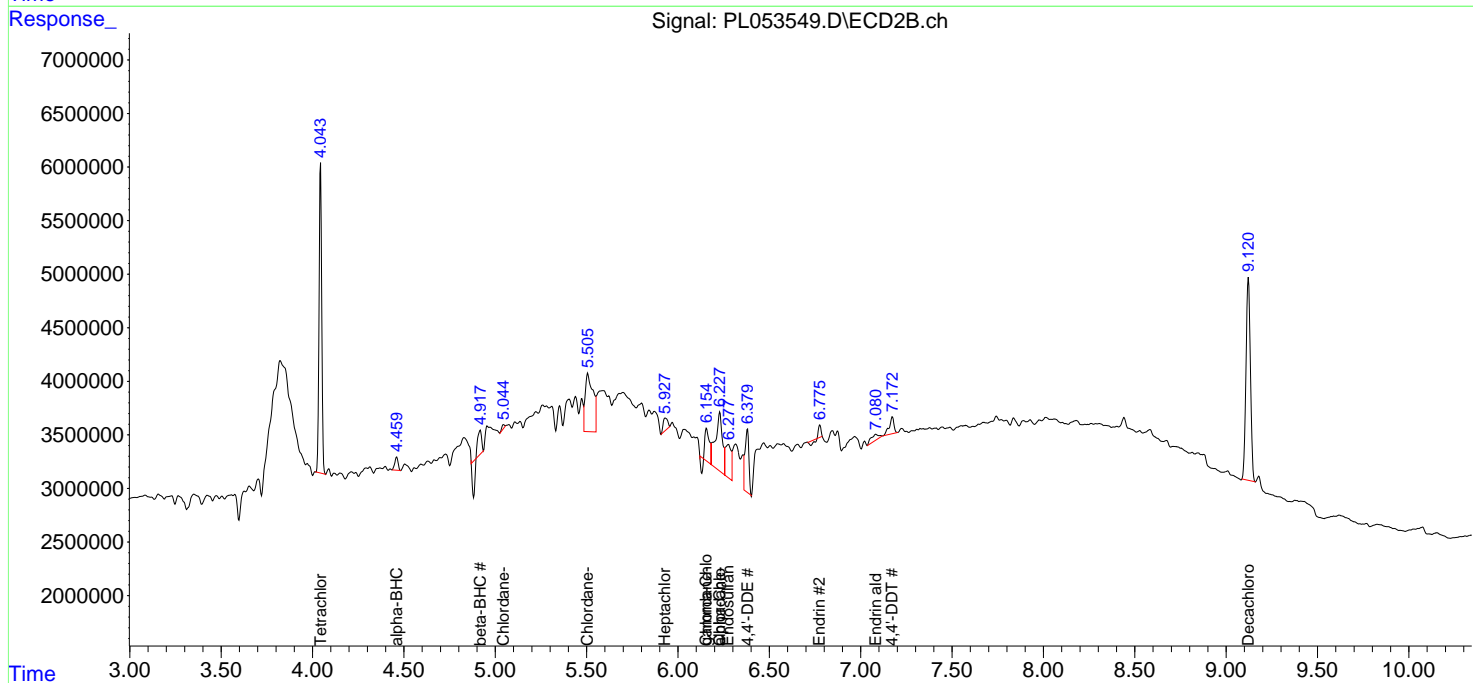
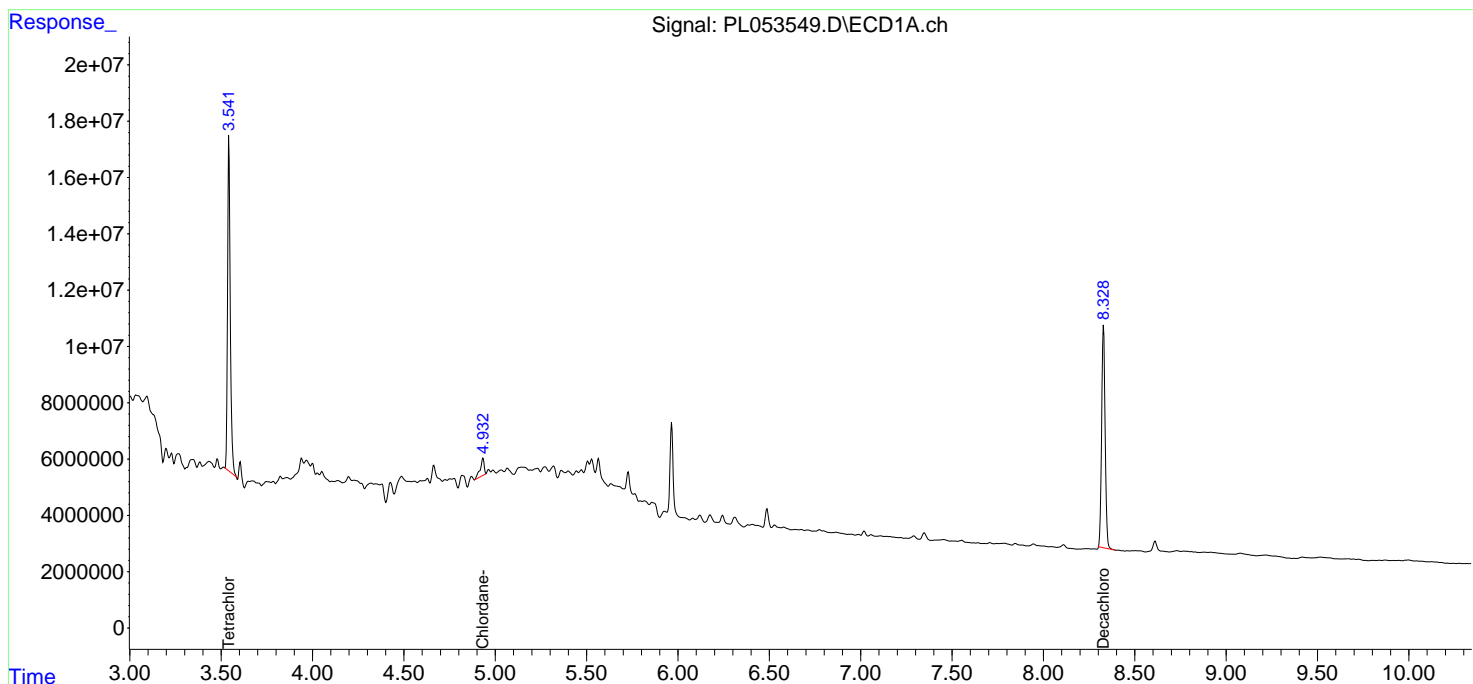
(f)=RT Delta > 1/2 Window (#)=Amounts differ by > 25% (m)=manual int.

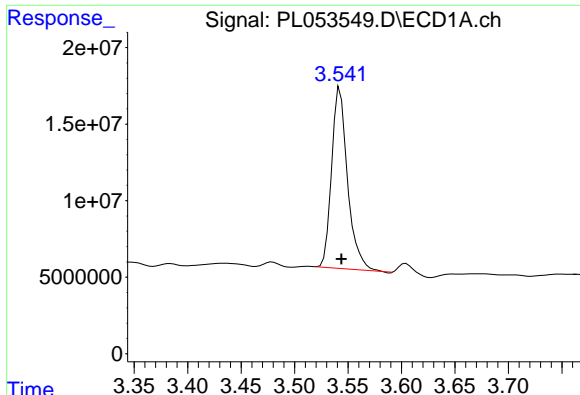
Data Path : Z:\pestpcbsrv\HPCHEM1\ECD_L\Data\PL102119\
 Data File : PL053549.D
 Signal(s) : Signal #1: ECD1A.ch Signal #2: ECD2B.ch
 Acq On : 21 Oct 2019 21:13
 Operator : SG\AJ
 Sample : K5147-05
 Misc :
 ALS Vial : 39 Sample Multiplier: 1

Instrument :
 ECD_L
 ClientSampled :

Integration File signal 1: autoint1.e
 Integration File signal 2: autoint2.e
 Quant Time: Oct 22 01:06:18 2019
 Quant Method : Z:\pestpcbsrv\HPCHEM1\ECD_L\methods\PL101919.M
 Quant Title : GC Extractables
 QLast Update : Fri Oct 18 13:56:08 2019
 Response via : Initial Calibration
 Integrator: ChemStation

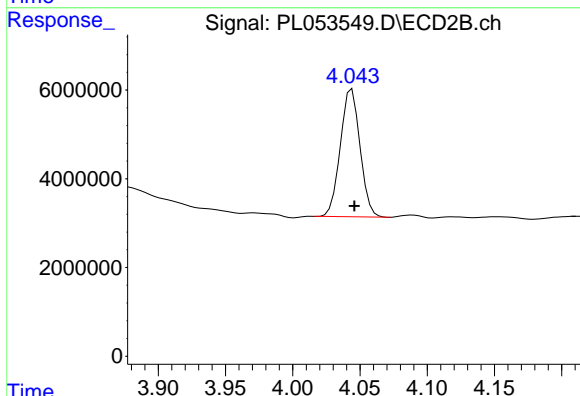
Volume Inj. : 1 µl
 Signal #1 Phase : ZB-MR2 Signal #2 Phase: ZB-MR1
 Signal #1 Info : 30M x 0.32mm x0.2 Signal #2 Info : 30M x 0.32mm x0.5µm



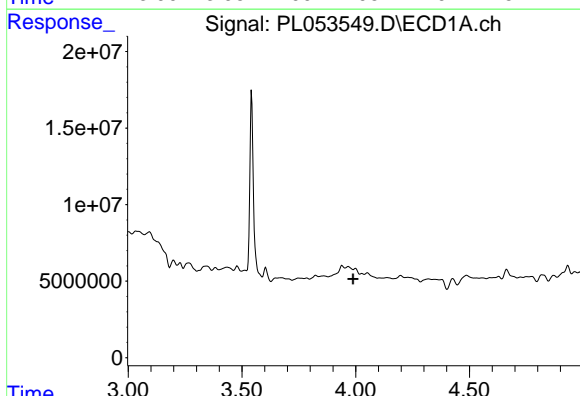


#1 Tetrachloro-m-xylene
 R.T.: 3.543 min
 Delta R.T.: -0.001 min
 Response: 121718975
 Conc: 11.23 ng/ml

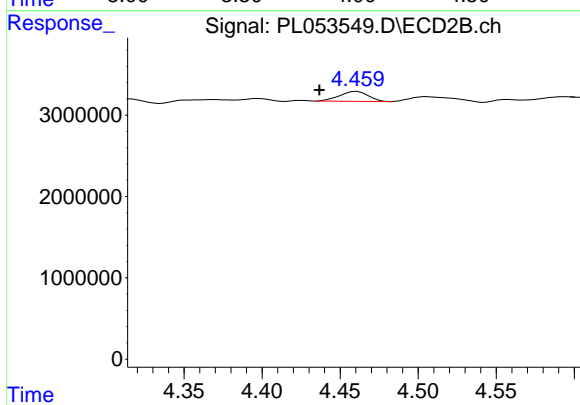
Instrument :
 ECD_L
 ClientSampled :



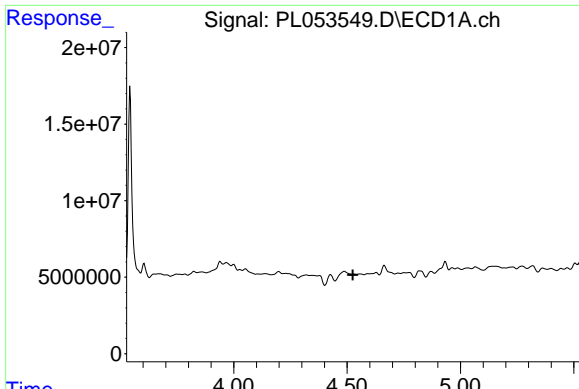
#1 Tetrachloro-m-xylene
 R.T.: 4.044 min
 Delta R.T.: -0.002 min
 Response: 29214097
 Conc: 11.67 ng/ml



#2 alpha-BHC
 R.T.: 0.000 min
 Exp R.T. : 3.988 min
 Response: 0
 Conc: N.D.

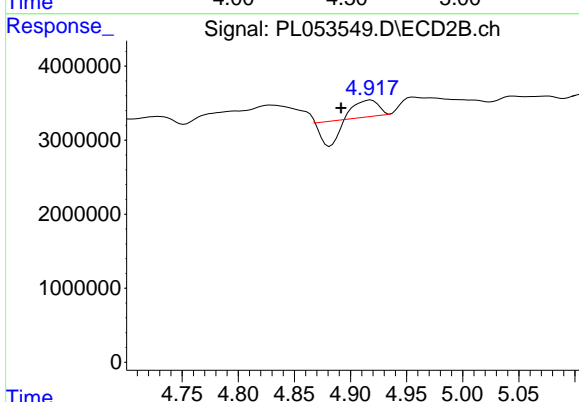


#2 alpha-BHC
 R.T.: 4.461 min
 Delta R.T.: 0.024 min
 Response: 1547190
 Conc: 0.45 ng/ml

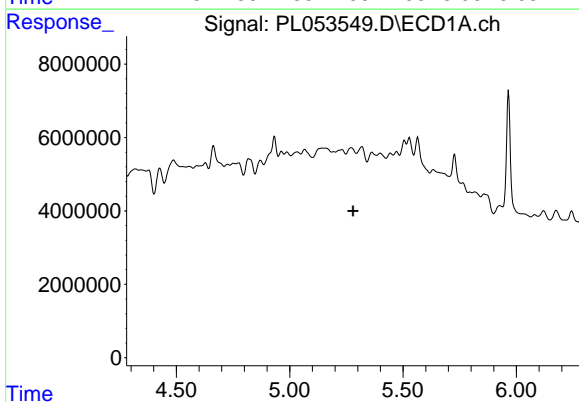


#6 beta-BHC
 R.T.: 0.000 min
 Exp R.T. : 4.525 min
 Response: 0
 Conc: N.D.

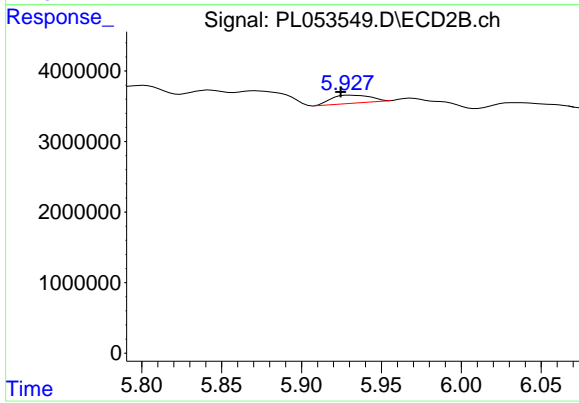
Instrument :
 ECD_L
 ClientSampled :



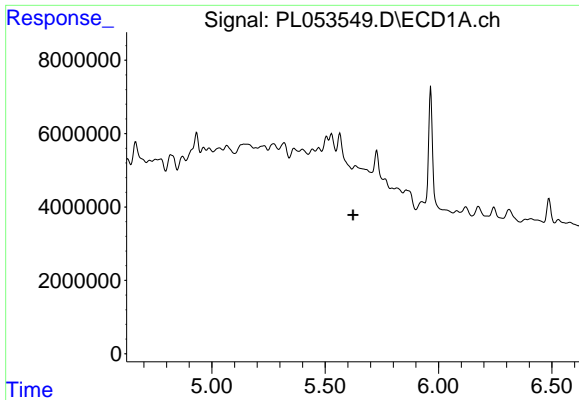
#6 beta-BHC
 R.T.: 4.918 min
 Delta R.T.: 0.026 min
 Response: 741955
 Conc: 0.48 ng/ml



#8 Heptachlor epoxide
 R.T.: 0.000 min
 Exp R.T. : 5.280 min
 Response: 0
 Conc: N.D.



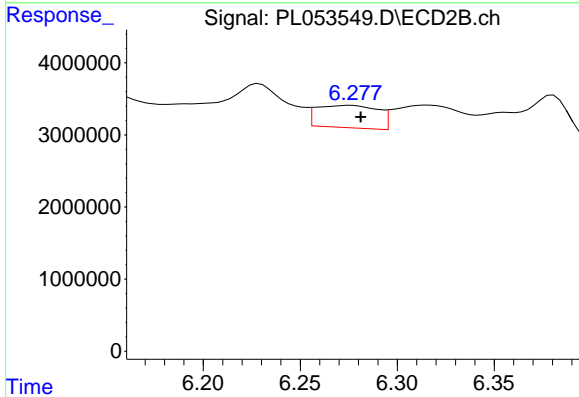
#8 Heptachlor epoxide
 R.T.: 5.931 min
 Delta R.T.: 0.006 min
 Response: 1947448
 Conc: 0.67 ng/ml



#9 Endosulfan I

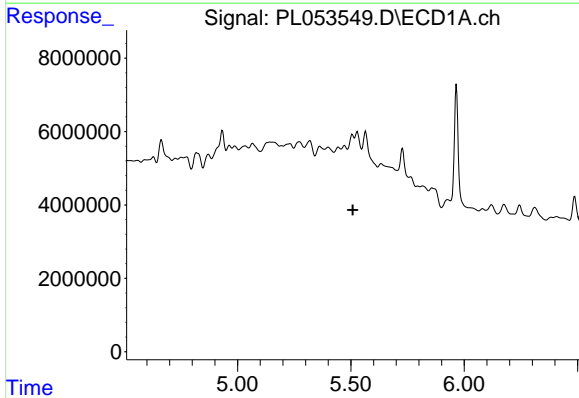
R.T.: 0.000 min
 Exp R.T. : 5.623 min
 Response: 0
 Conc: N.D.

Instrument :
 ECD_L
 ClientSampled :



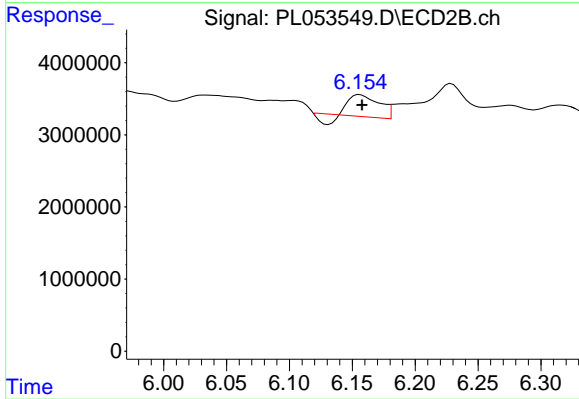
#9 Endosulfan I

R.T.: 6.276 min
 Delta R.T.: -0.005 min
 Response: 6813176
 Conc: 2.51 ng/ml



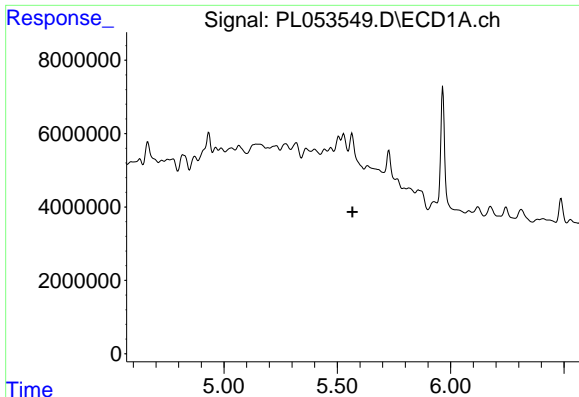
#10 gamma-Chlordane

R.T.: 0.000 min
 Exp R.T. : 5.509 min
 Response: 0
 Conc: N.D.



#10 gamma-Chlordane

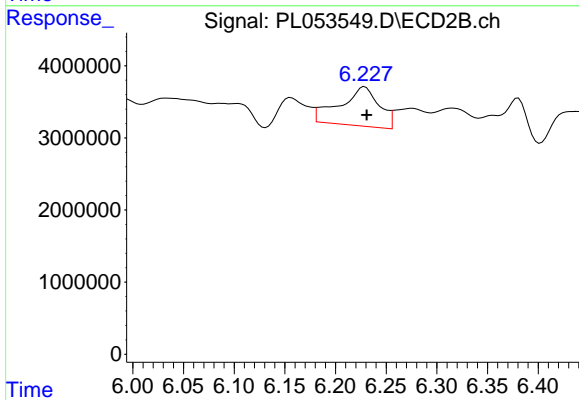
R.T.: 6.156 min
 Delta R.T.: -0.002 min
 Response: 4118911
 Conc: 1.41 ng/ml



#11 alpha-Chlordane

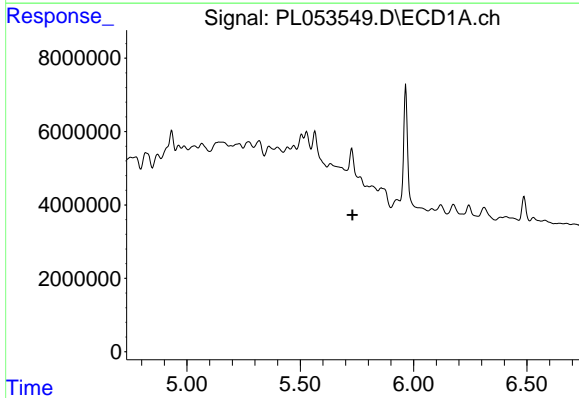
R.T.: 0.000 min
Exp R.T.: 5.568 min
Response: 0
Conc: N.D.

Instrument :
ECD_L
ClientSampleId :



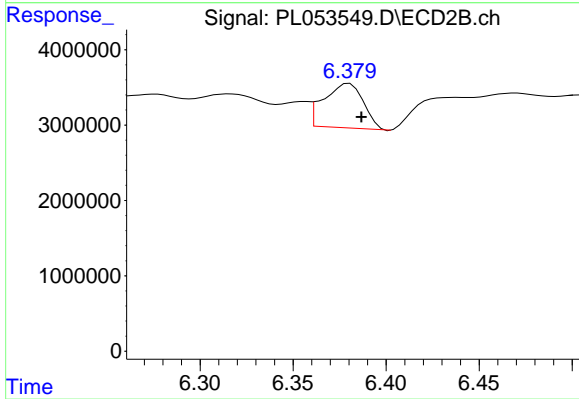
#11 alpha-Chlordane

R.T.: 6.229 min
Delta R.T.: -0.002 min
Response: 14666010
Conc: 5.02 ng/ml



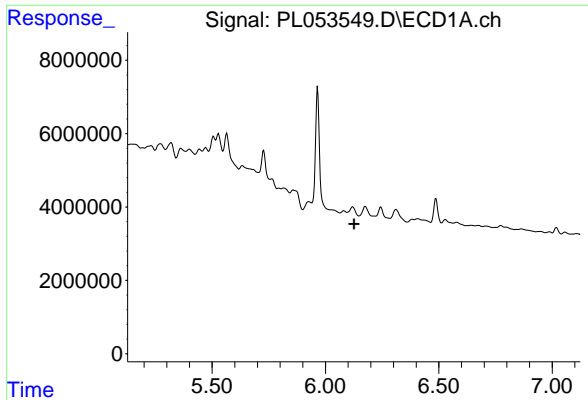
#12 4,4'-DDE

R.T.: 0.000 min
Exp R.T.: 5.731 min
Response: 0
Conc: N.D.



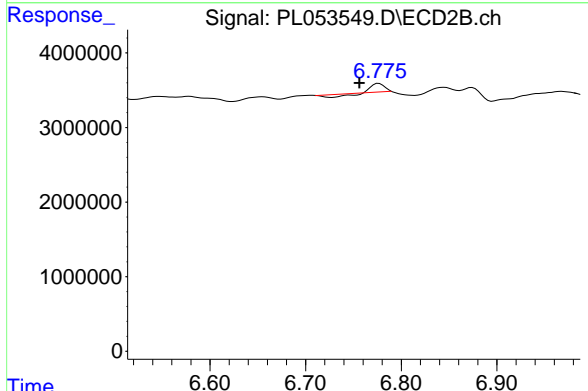
#12 4,4'-DDE

R.T.: 6.380 min
Delta R.T.: -0.006 min
Response: 8700145
Conc: 3.09 ng/ml

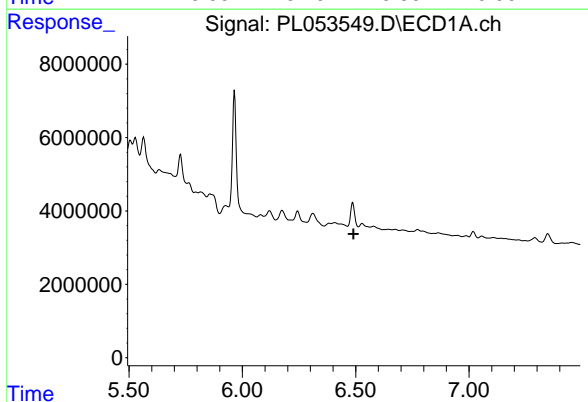


#14 Endrin
 R.T.: 0.000 min
 Exp R.T. : 6.126 min
 Response: 0
 Conc: N.D.

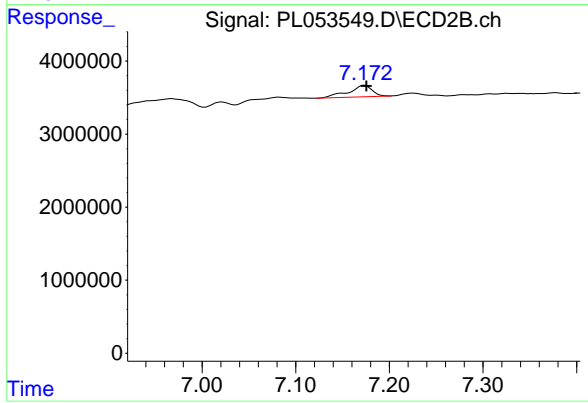
Instrument :
 ECD_L
 ClientSampled :



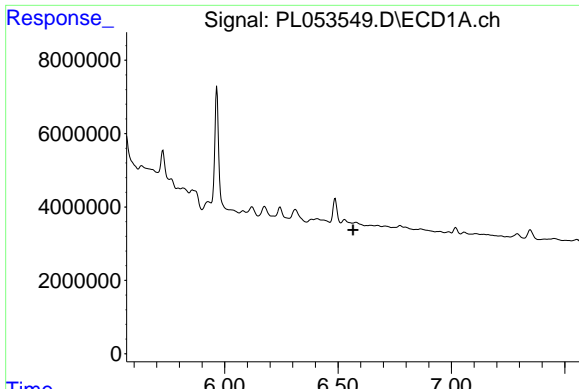
#14 Endrin
 R.T.: 6.777 min
 Delta R.T.: 0.020 min
 Response: 541036
 Conc: 0.22 ng/ml



#17 4,4'-DDT
 R.T.: 0.000 min
 Exp R.T. : 6.491 min
 Response: 0
 Conc: N.D.



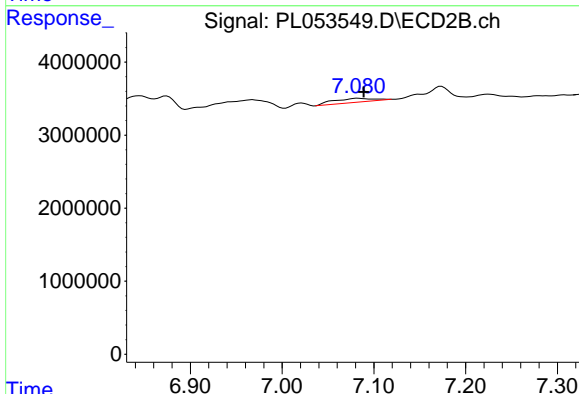
#17 4,4'-DDT
 R.T.: 7.173 min
 Delta R.T.: -0.002 min
 Response: 2760173
 Conc: 1.19 ng/ml



#18 Endrin aldehyde

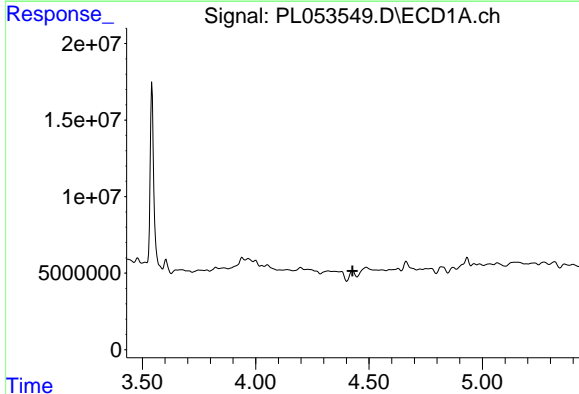
R.T.: 0.000 min
 Exp R.T. : 6.567 min
 Response: 0
 Conc: N.D.

Instrument :
 ECD_L
 ClientSampled :



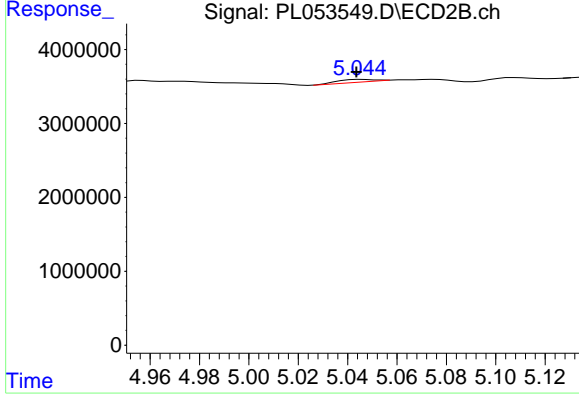
#18 Endrin aldehyde

R.T.: 7.083 min
 Delta R.T.: -0.006 min
 Response: 1647769
 Conc: 0.75 ng/ml



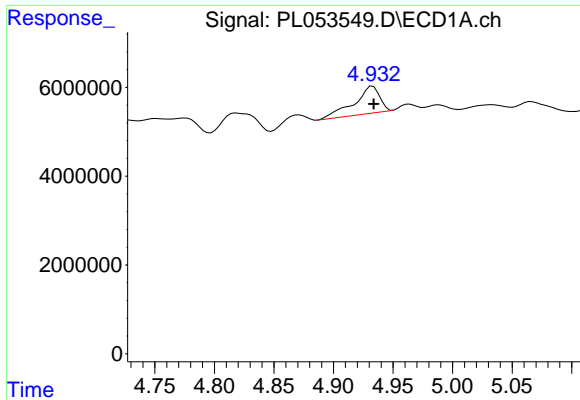
#23 Chlordane-1

R.T.: 0.000 min
 Exp R.T. : 4.428 min
 Response: 0
 Conc: N.D.



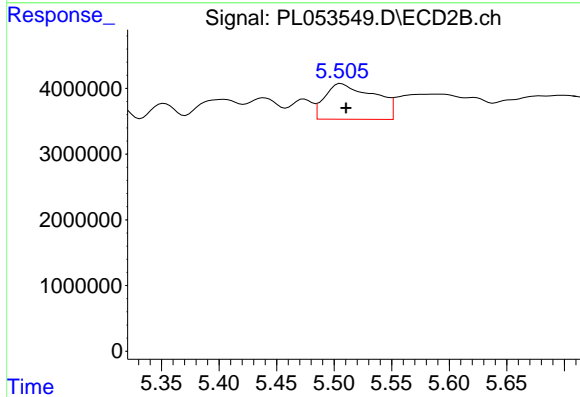
#23 Chlordane-1

R.T.: 5.046 min
 Delta R.T.: 0.002 min
 Response: 366139
 Conc: 4.37 ng/ml

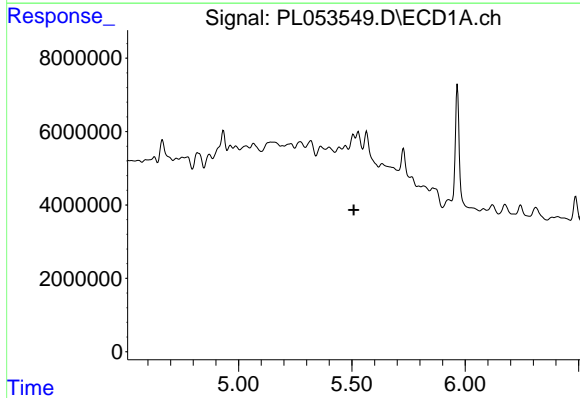


#24 Chlordane-2
 R.T.: 4.933 min
 Delta R.T.: 0.000 min
 Response: 9067233
 Conc: 23.53 ng/ml

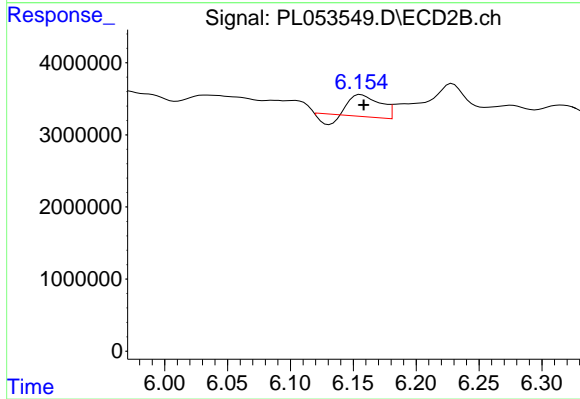
Instrument :
 ECD_L
 ClientSampled :



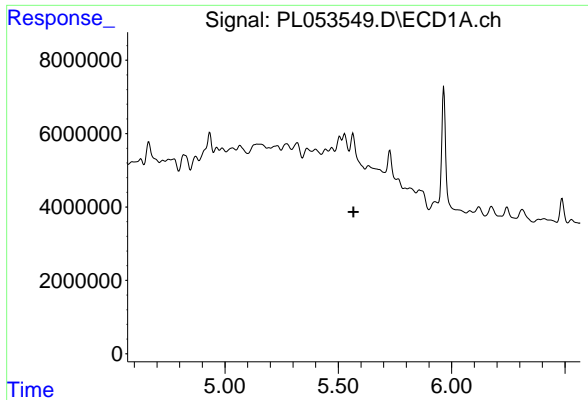
#24 Chlordane-2
 R.T.: 5.506 min
 Delta R.T.: -0.005 min
 Response: 16241627
 Conc: 165.36 ng/ml



#25 Chlordane-3
 R.T.: 0.000 min
 Exp R.T. : 5.509 min
 Response: 0
 Conc: N.D.



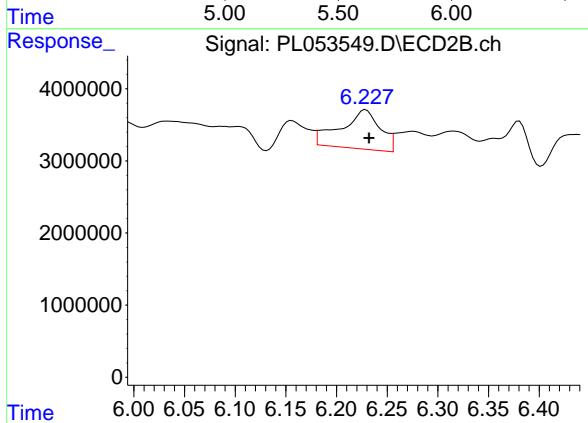
#25 Chlordane-3
 R.T.: 6.156 min
 Delta R.T.: -0.002 min
 Response: 4118911
 Conc: 11.28 ng/ml



#26 Chlordane-4

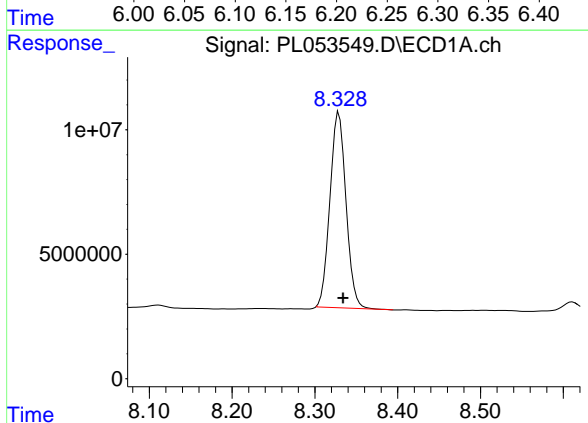
R.T.: 0.000 min
 Exp R.T.: 5.568 min
 Response: 0
 Conc: N.D.

Instrument :
 ECD_L
 ClientSampled :



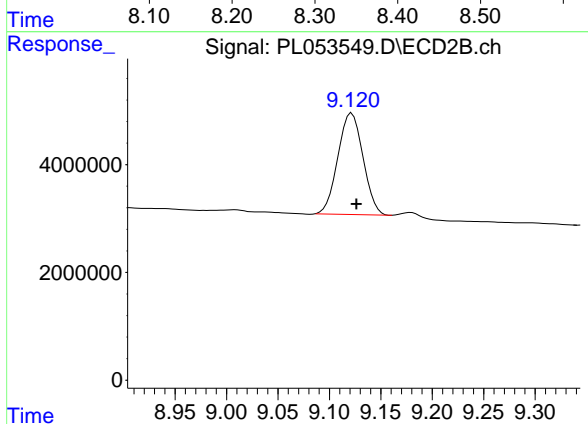
#26 Chlordane-4

R.T.: 6.229 min
 Delta R.T.: -0.003 min
 Response: 14666010
 Conc: 32.67 ng/ml



#28 Decachlorobiphenyl

R.T.: 8.329 min
 Delta R.T.: -0.005 min
 Response: 106121919
 Conc: 10.82 ng/ml



#28 Decachlorobiphenyl

R.T.: 9.122 min
 Delta R.T.: -0.004 min
 Response: 32003025
 Conc: 11.36 ng/ml