

Data Path : Z:\pestpcbsrv\HPCHEM1\ECD_L\Data\PL102120\
 Data File : PL062465.D
 Signal(s) : Signal #1: ECD1A.ch Signal #2: ECD2B.ch
 Acq On : 21 Oct 2020 11:02
 Operator : DD\AJ
 Sample : I.BLK
 Misc :
 ALS Vial : 2 Sample Multiplier: 1

Instrument :
 ECD_L
 ClientSampleId :

Integration File signal 1: autoint1.e
 Integration File signal 2: autoint2.e
 Quant Time: Oct 22 04:55:24 2020
 Quant Method : Z:\pestpcbsrv\HPCHEM1\ECD_L\methods\PL102120.M
 Quant Title : GC Extractables
 QLast Update : Thu Oct 22 04:25:31 2020
 Response via : Initial Calibration
 Integrator: ChemStation

Volume Inj. : 1 µl
 Signal #1 Phase : ZB-MR2 Signal #2 Phase: ZB-MR1
 Signal #1 Info : 30M x 0.32mm x0.2 Signal #2 Info : 30M x 0.32mm x0.5µm

Compound	RT#1	RT#2	Resp#1	Resp#2	ng/ml	ng/ml

System Monitoring Compounds						
1) SA Tetrachlo...	3.412	3.951	39009520	67862710	22.679	23.093
28) SA Decachlor...	8.125	8.988	35129942	45830571	21.898	21.898
Target Compounds						
8) B Heptachlo...	5.109	0.000	2891397	0	1.585	N.D. #
22) Mirex	7.280f	0.000	11870518	0	8.373	N.D. #
23) Chlordane-1	4.299f	0.000	3655177	0	70.906	N.D. #
24) Chlordane-2	0.000	5.390	0	5411424	N.D.	49.630 #

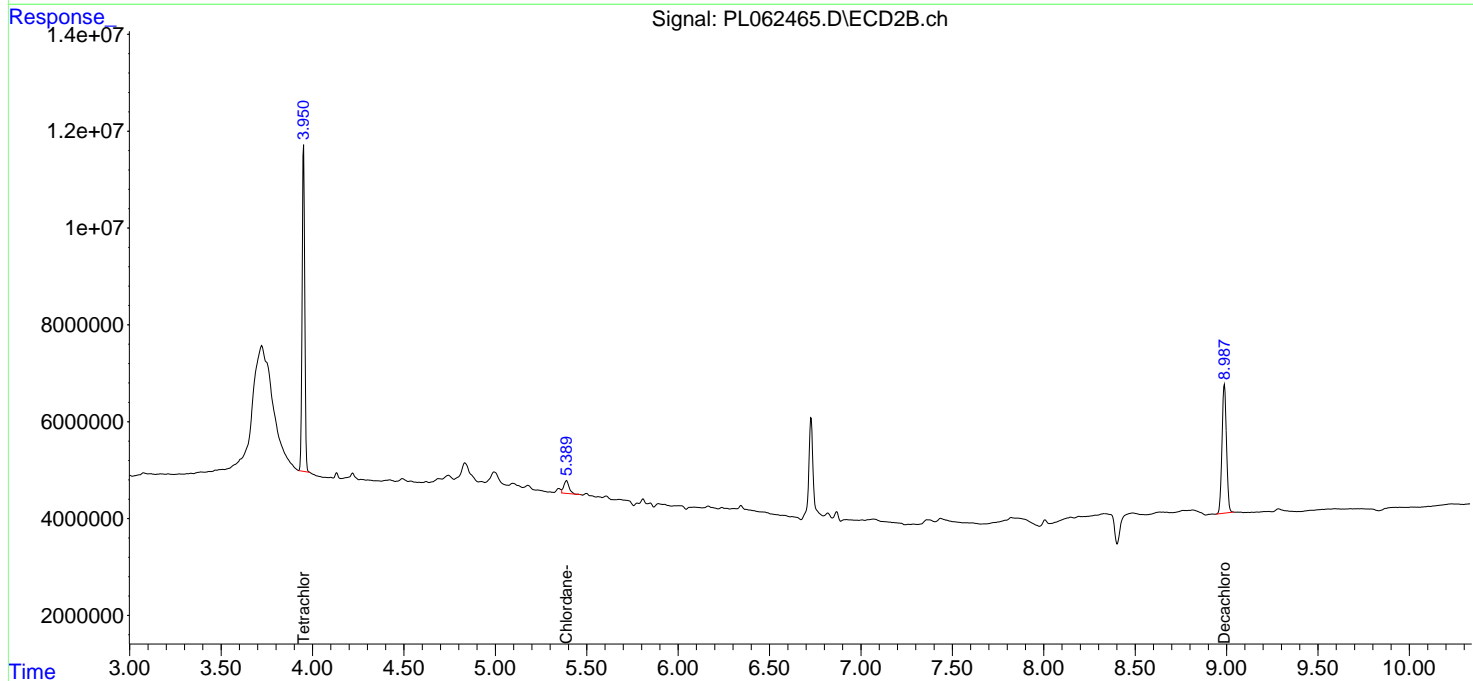
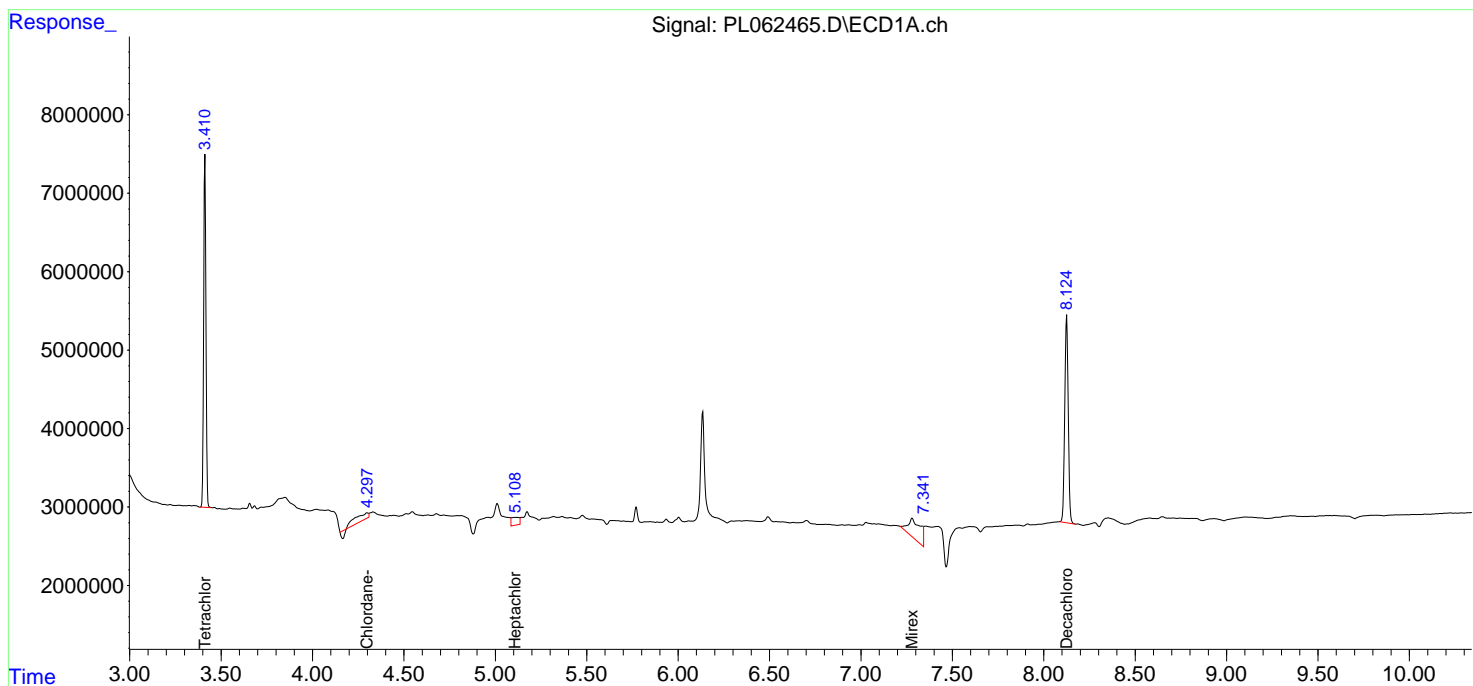
(f)=RT Delta > 1/2 Window (#)=Amounts differ by > 25% (m)=manual int.

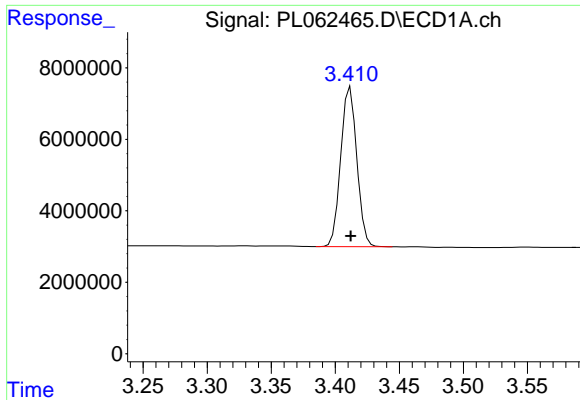
Data Path : Z:\pestpcbsrv\HPCHEM1\ECD_L\Data\PL102120\
 Data File : PL062465.D
 Signal(s) : Signal #1: ECD1A.ch Signal #2: ECD2B.ch
 Acq On : 21 Oct 2020 11:02
 Operator : DD\AJ
 Sample : I.BLK
 Misc :
 ALS Vial : 2 Sample Multiplier: 1

Instrument :
 ECD_L
 ClientSampled :

Integration File signal 1: autoint1.e
 Integration File signal 2: autoint2.e
 Quant Time: Oct 22 04:55:24 2020
 Quant Method : Z:\pestpcbsrv\HPCHEM1\ECD_L\methods\PL102120.M
 Quant Title : GC Extractables
 QLast Update : Thu Oct 22 04:25:31 2020
 Response via : Initial Calibration
 Integrator: ChemStation

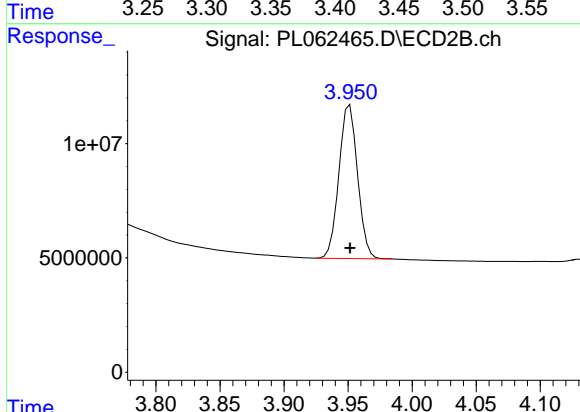
Volume Inj. : 1 µl
 Signal #1 Phase : ZB-MR2 Signal #2 Phase: ZB-MR1
 Signal #1 Info : 30M x 0.32mm x0.2 Signal #2 Info : 30M x 0.32mm x0.5µm



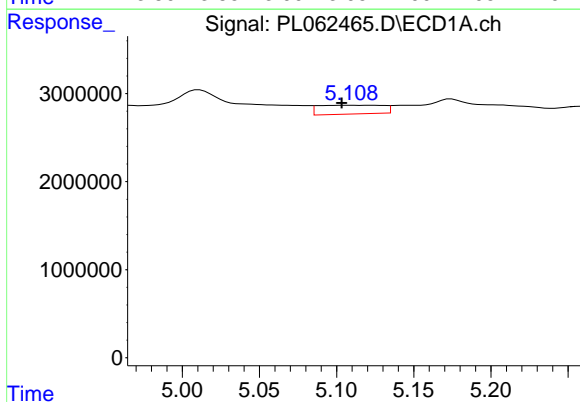


#1 Tetrachloro-m-xylene
 R.T.: 3.412 min
 Delta R.T.: 0.000 min
 Response: 39009520
 Conc: 22.68 ng/ml

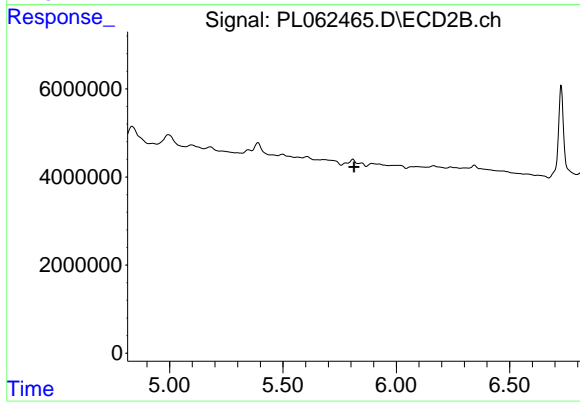
Instrument :
 ECD_L
 ClientSampled :



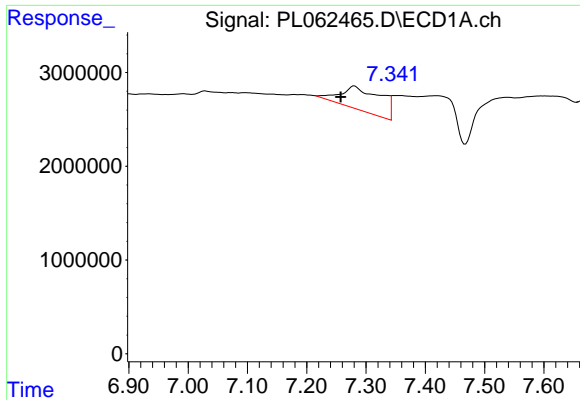
#1 Tetrachloro-m-xylene
 R.T.: 3.951 min
 Delta R.T.: 0.000 min
 Response: 67862710
 Conc: 23.09 ng/ml



#8 Heptachlor epoxide
 R.T.: 5.109 min
 Delta R.T.: 0.006 min
 Response: 2891397
 Conc: 1.58 ng/ml

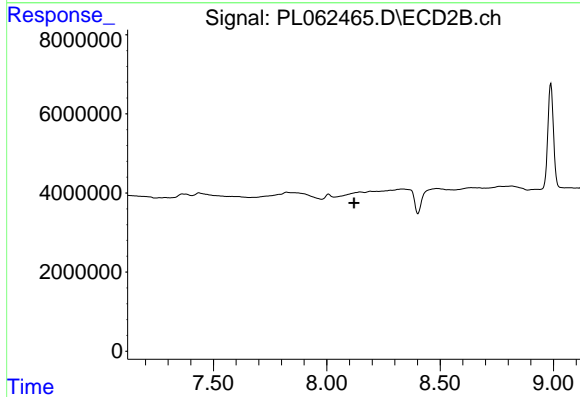


#8 Heptachlor epoxide
 R.T.: 0.000 min
 Exp R.T.: 5.815 min
 Response: 0
 Conc: N.D.

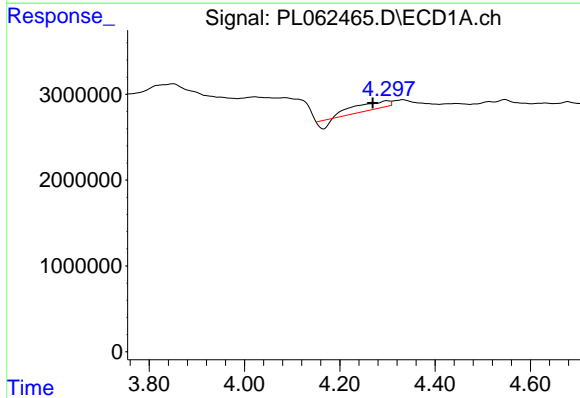


#22 Mirex
 R.T.: 7.280 min
 Delta R.T.: 0.023 min
 Response: 11870518
 Conc: 8.37 ng/ml

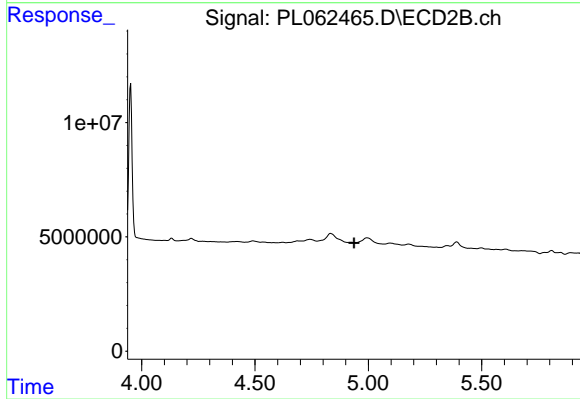
Instrument :
 ECD_L
 ClientSampled :



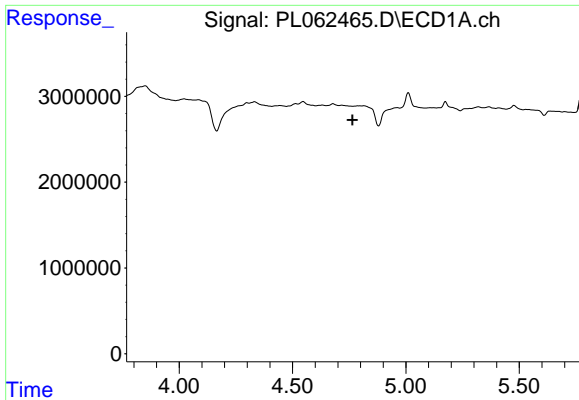
#22 Mirex
 R.T.: 0.000 min
 Exp R.T. : 8.121 min
 Response: 0
 Conc: N.D.



#23 Chlordane-1
 R.T.: 4.299 min
 Delta R.T.: 0.029 min
 Response: 3655177
 Conc: 70.91 ng/ml



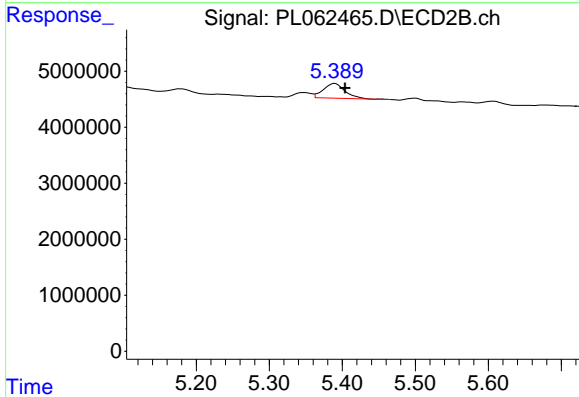
#23 Chlordane-1
 R.T.: 0.000 min
 Exp R.T. : 4.938 min
 Response: 0
 Conc: N.D.



#24 Chlordane-2

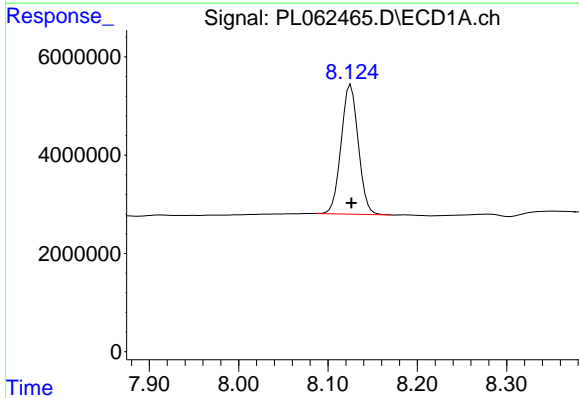
R.T.: 0.000 min
 Exp R.T.: 4.765 min
 Response: 0
 Conc: N.D.

Instrument :
 ECD_L
 ClientSampleId :



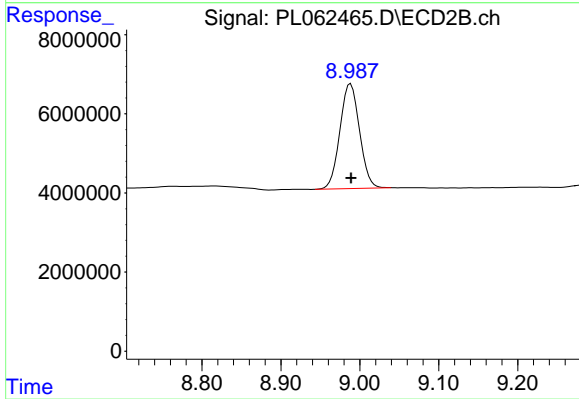
#24 Chlordane-2

R.T.: 5.390 min
 Delta R.T.: -0.014 min
 Response: 5411424
 Conc: 49.63 ng/ml



#28 Decachlorobiphenyl

R.T.: 8.125 min
 Delta R.T.: 0.000 min
 Response: 35129942
 Conc: 21.90 ng/ml



#28 Decachlorobiphenyl

R.T.: 8.988 min
 Delta R.T.: 0.000 min
 Response: 45830571
 Conc: 21.90 ng/ml