

Data Path : Z:\pestpcbsrv\HPCHEM1\ECD_L\Data\PL102120\
 Data File : PL062489.D
 Signal(s) : Signal #1: ECD1A.ch Signal #2: ECD2B.ch
 Acq On : 21 Oct 2020 18:01
 Operator : DD\AJ
 Sample : L4467-03
 Misc :
 ALS Vial : 10 Sample Multiplier: 1

Instrument :
 ECD_L
 ClientSampleId :
 VNJ-240

Integration File signal 1: autoint1.e
 Integration File signal 2: autoint2.e
 Quant Time: Oct 22 09:14:16 2020
 Quant Method : Z:\pestpcbsrv\HPCHEM1\ECD_L\methods\PL102120.M
 Quant Title : GC Extractables
 QLast Update : Thu Oct 22 04:25:31 2020
 Response via : Initial Calibration
 Integrator: ChemStation

Volume Inj. : 1 µl
 Signal #1 Phase : ZB-MR2 Signal #2 Phase: ZB-MR1
 Signal #1 Info : 30M x 0.32mm x0.2 Signal #2 Info : 30M x 0.32mm x0.5µm

Compound	RT#1	RT#2	Resp#1	Resp#2	ng/ml	ng/ml

System Monitoring Compounds						
1) SA Tetrachlo...	3.412	3.952	37126702	63335749	21.584	21.552
28) SA Decachlor...	8.128	8.991	33996082	45432978	21.191	21.708
Target Compounds						
8) B Heptachlo...	5.115	0.000	1959977	0	1.074	N.D. #
9) A Endosulfan I	5.460f	0.000	5590388	0	3.344	N.D. #
12) B 4,4'-DDE	5.553	6.282	3626470	13382422	2.192	4.153 #
14) MA Endrin	5.936	0.000	2832573	0	1.702	N.D. #
15) B Endosulfa...	6.222f	6.871f	821217	8703277	0.498	3.045 #
17) MA 4,4'-DDT	6.301	7.066	3647320	5760309	2.733	2.566
19) B Endosulfa...	6.605f	0.000	9157279	0	5.549	N.D. #
20) A Methoxychlor	6.830f	0.000	1000331	0	1.161	N.D. #
23) Chlordane-1	4.277	0.000	1807396	0	35.061	N.D. #
27) Chlordane-5	6.222	0.000	821217	0	17.022	N.D. #

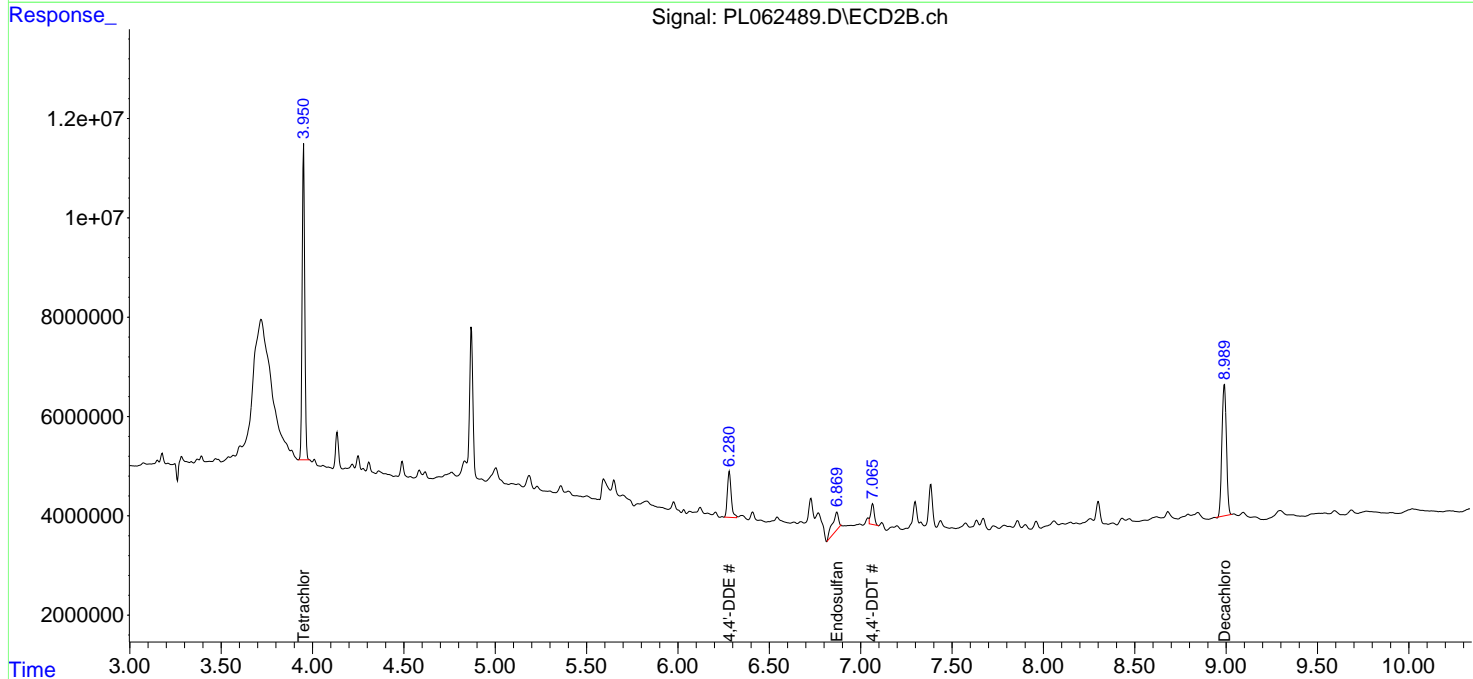
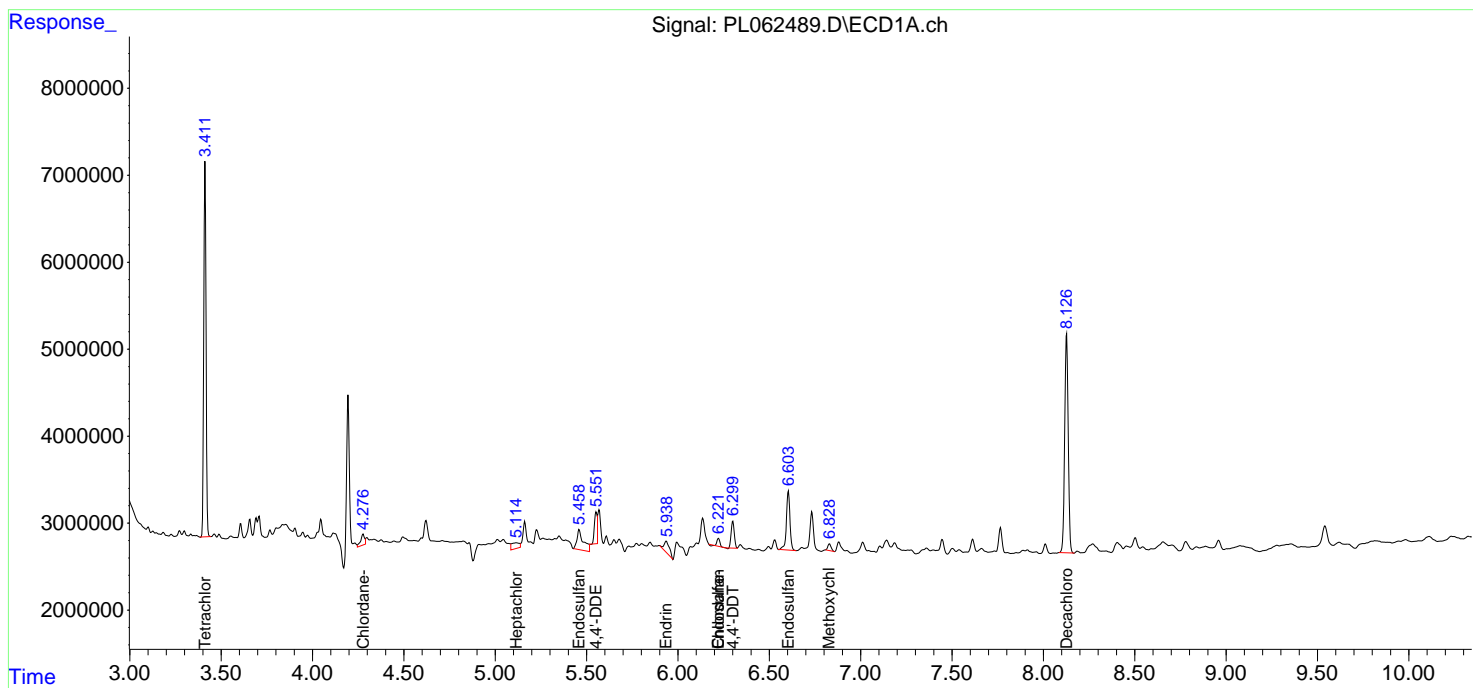
(f)=RT Delta > 1/2 Window (#)=Amounts differ by > 25% (m)=manual int.

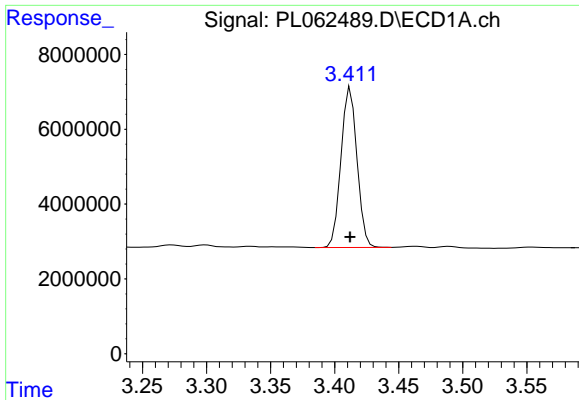
Data Path : Z:\pestpcbsrv\HPCHEM1\ECD_L\Data\PL102120\
 Data File : PL062489.D
 Signal(s) : Signal #1: ECD1A.ch Signal #2: ECD2B.ch
 Acq On : 21 Oct 2020 18:01
 Operator : DD\AJ
 Sample : L4467-03
 Misc :
 ALS Vial : 10 Sample Multiplier: 1

Instrument :
 ECD_L
 ClientSampled :
 VNJ-240

Integration File signal 1: autoint1.e
 Integration File signal 2: autoint2.e
 Quant Time: Oct 22 09:14:16 2020
 Quant Method : Z:\pestpcbsrv\HPCHEM1\ECD_L\methods\PL102120.M
 Quant Title : GC Extractables
 QLast Update : Thu Oct 22 04:25:31 2020
 Response via : Initial Calibration
 Integrator: ChemStation

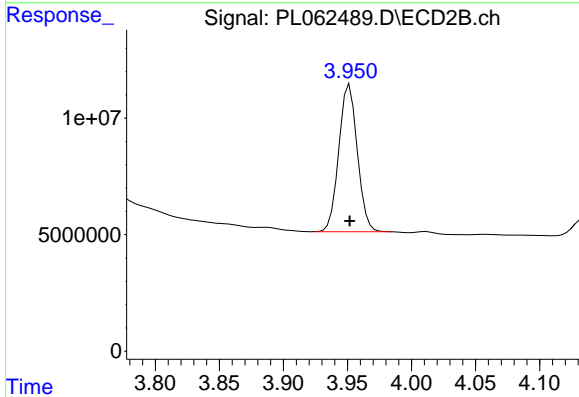
Volume Inj. : 1 µl
 Signal #1 Phase : ZB-MR2 Signal #2 Phase: ZB-MR1
 Signal #1 Info : 30M x 0.32mm x0.2 Signal #2 Info : 30M x 0.32mm x0.5µm



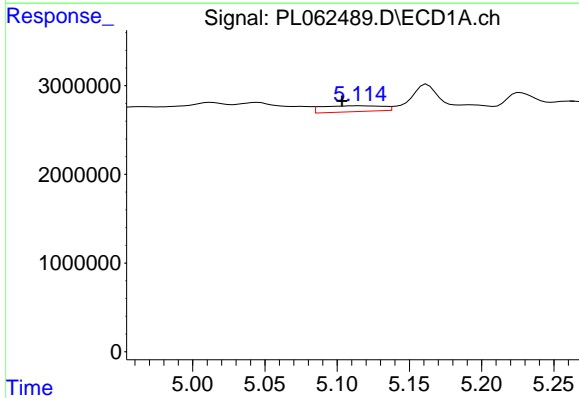


#1 Tetrachloro-m-xylene
 R.T.: 3.412 min
 Delta R.T.: 0.000 min
 Response: 37126702
 Conc: 21.58 ng/ml

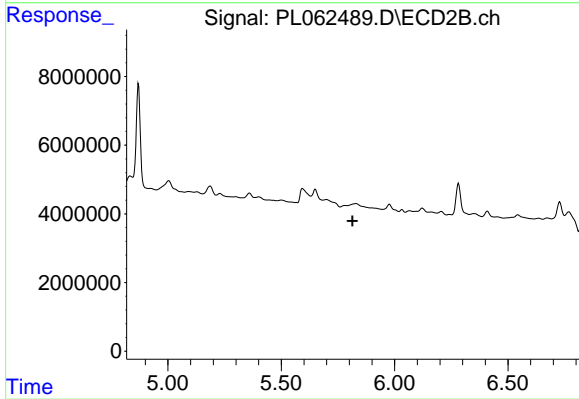
Instrument :
 ECD_L
 ClientSampleId :
 VNJ-240



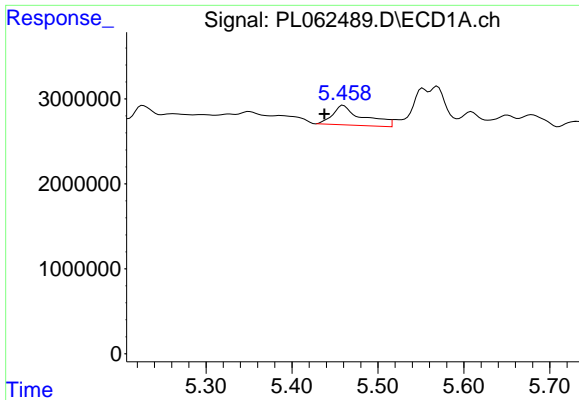
#1 Tetrachloro-m-xylene
 R.T.: 3.952 min
 Delta R.T.: 0.000 min
 Response: 63335749
 Conc: 21.55 ng/ml



#8 Heptachlor epoxide
 R.T.: 5.115 min
 Delta R.T.: 0.012 min
 Response: 1959977
 Conc: 1.07 ng/ml

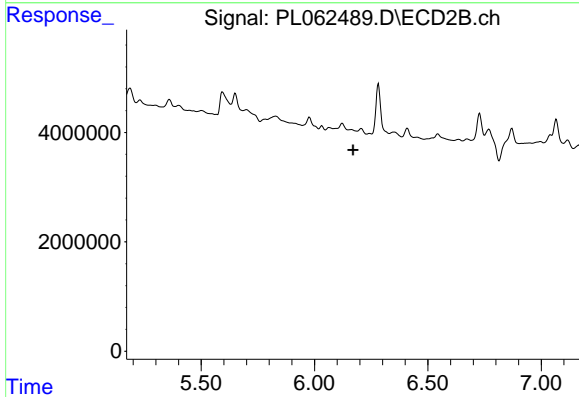


#8 Heptachlor epoxide
 R.T.: 0.000 min
 Exp R.T. : 5.815 min
 Response: 0
 Conc: N.D.

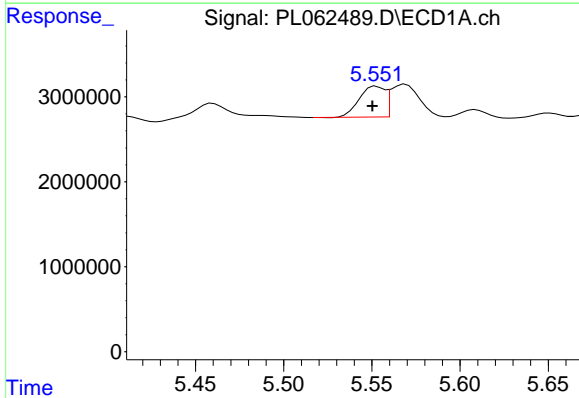


#9 Endosulfan I
 R.T.: 5.460 min
 Delta R.T.: 0.022 min
 Response: 5590388
 Conc: 3.34 ng/ml

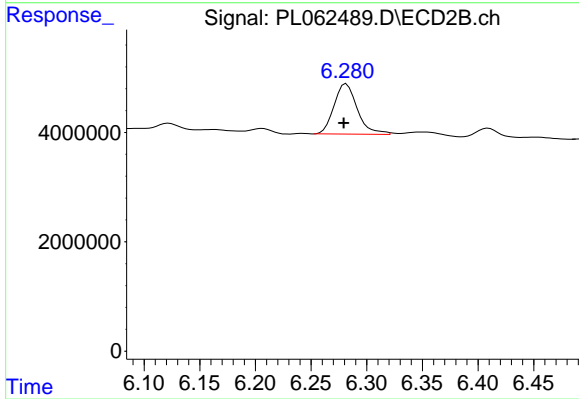
Instrument :
 ECD_L
 ClientSampleId :
 VNJ-240



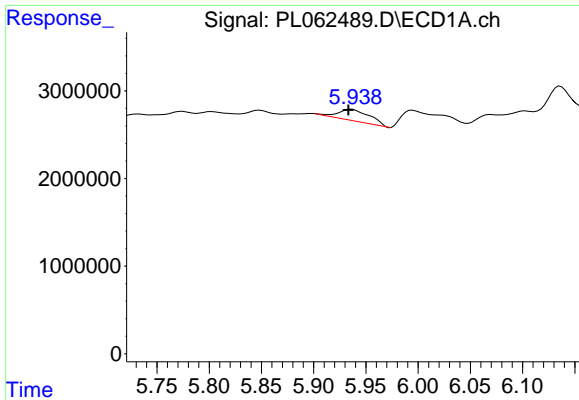
#9 Endosulfan I
 R.T.: 0.000 min
 Exp R.T. : 6.170 min
 Response: 0
 Conc: N.D.



#12 4,4'-DDE
 R.T.: 5.553 min
 Delta R.T.: 0.002 min
 Response: 3626470
 Conc: 2.19 ng/ml

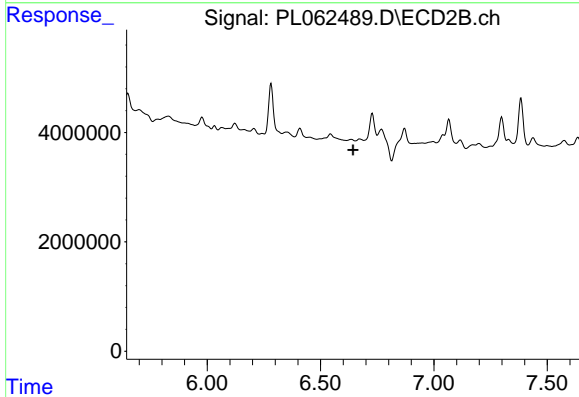


#12 4,4'-DDE
 R.T.: 6.282 min
 Delta R.T.: 0.002 min
 Response: 13382422
 Conc: 4.15 ng/ml

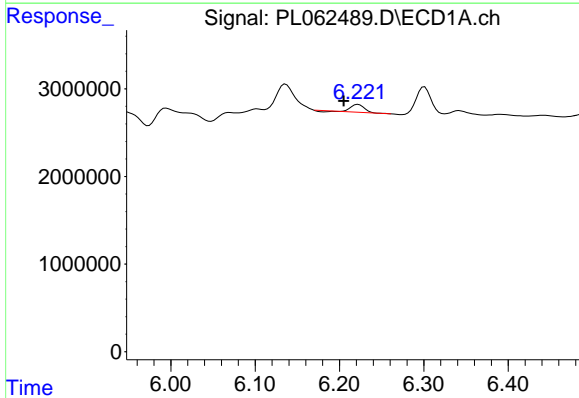


#14 Endrin
 R.T.: 5.936 min
 Delta R.T.: 0.003 min
 Response: 2832573
 Conc: 1.70 ng/ml

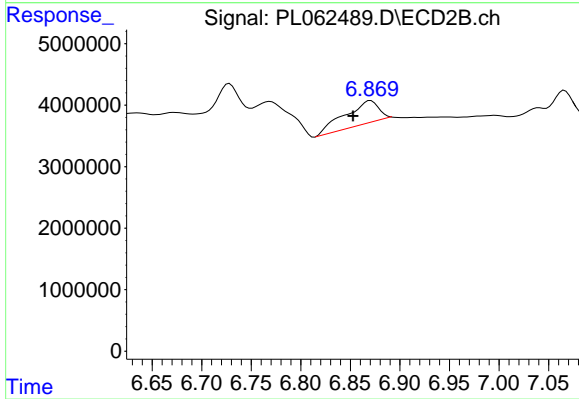
Instrument :
 ECD_L
 ClientSampleId :
 VNJ-240



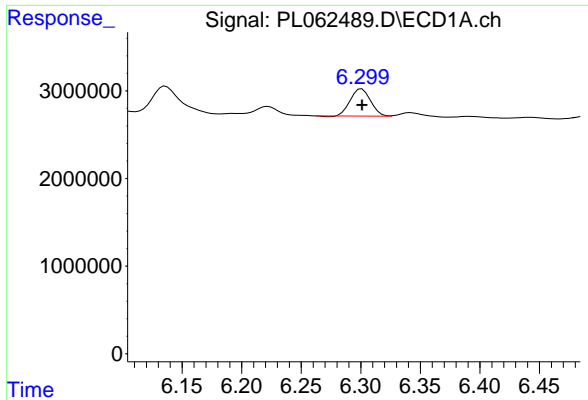
#14 Endrin
 R.T.: 0.000 min
 Exp R.T. : 6.643 min
 Response: 0
 Conc: N.D.



#15 Endosulfan II
 R.T.: 6.222 min
 Delta R.T.: 0.017 min
 Response: 821217
 Conc: 0.50 ng/ml

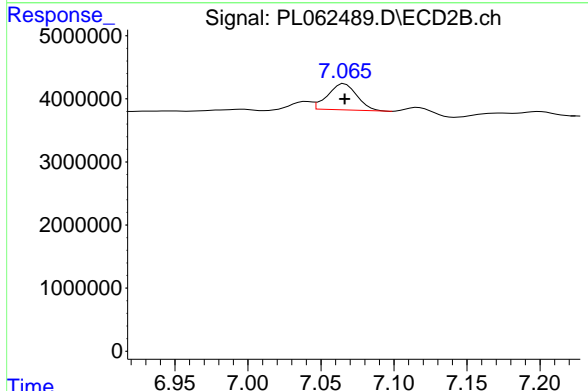


#15 Endosulfan II
 R.T.: 6.871 min
 Delta R.T.: 0.018 min
 Response: 8703277
 Conc: 3.04 ng/ml

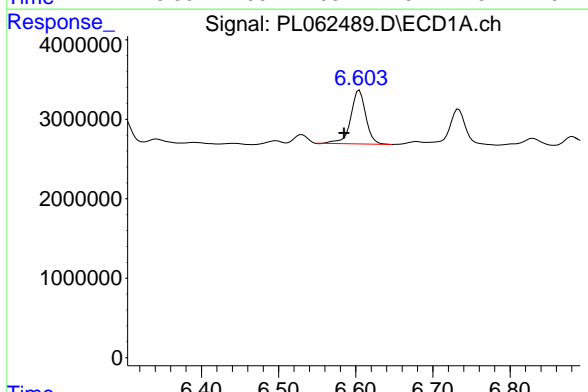


#17 4,4'-DDT
 R.T.: 6.301 min
 Delta R.T.: 0.000 min
 Response: 3647320
 Conc: 2.73 ng/ml

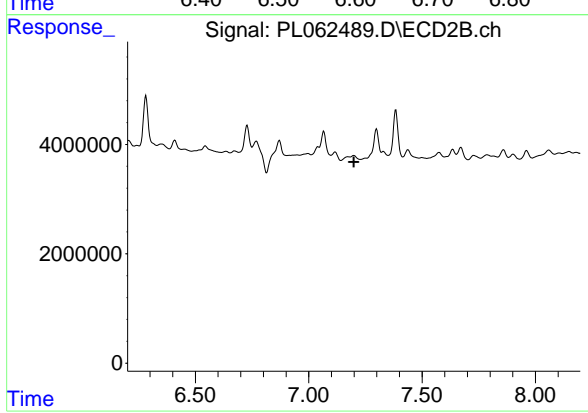
Instrument :
 ECD_L
 ClientSampled :
 VNJ-240



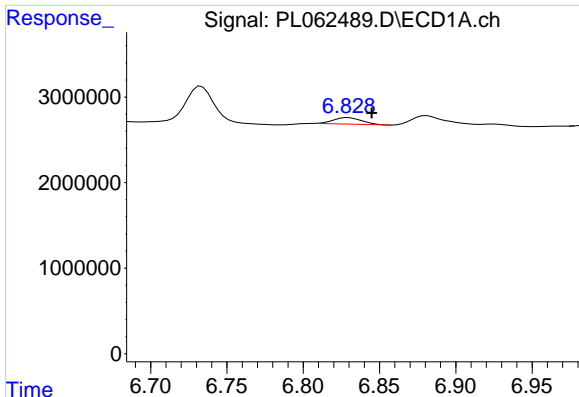
#17 4,4'-DDT
 R.T.: 7.066 min
 Delta R.T.: 0.000 min
 Response: 5760309
 Conc: 2.57 ng/ml



#19 Endosulfan Sulfate
 R.T.: 6.605 min
 Delta R.T.: 0.020 min
 Response: 9157279
 Conc: 5.55 ng/ml



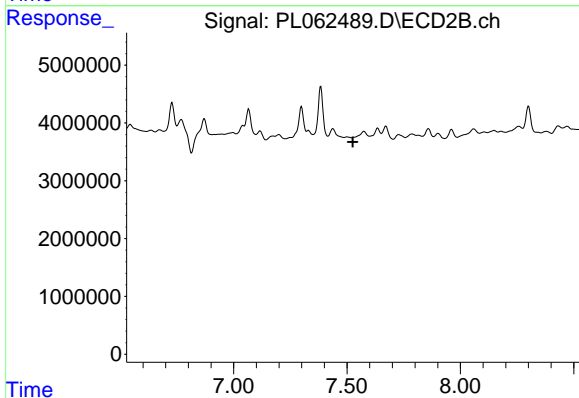
#19 Endosulfan Sulfate
 R.T.: 0.000 min
 Exp R.T.: 7.199 min
 Response: 0
 Conc: N.D.



#20 Methoxychlor

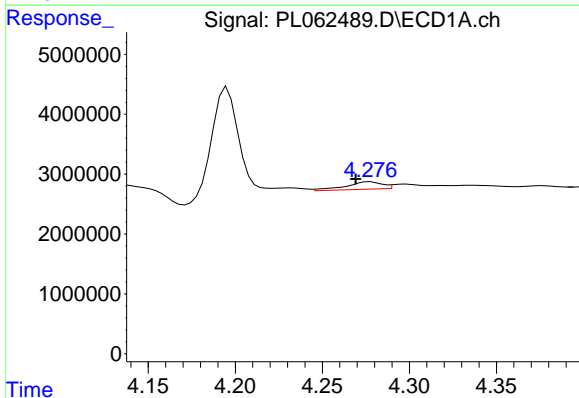
R.T.: 6.830 min
 Delta R.T.: -0.015 min
 Response: 1000331
 Conc: 1.16 ng/ml

Instrument :
 ECD_L
 ClientSampleId :
 VNJ-240



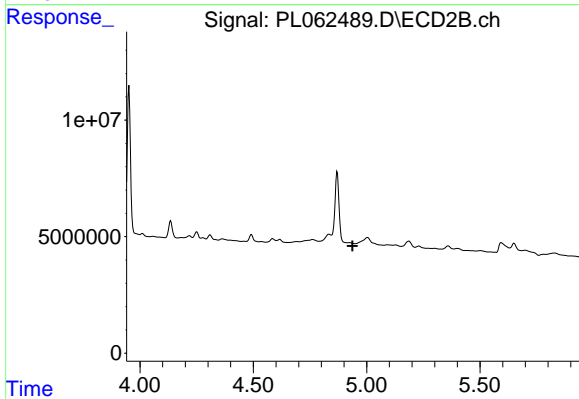
#20 Methoxychlor

R.T.: 0.000 min
 Exp R.T. : 7.526 min
 Response: 0
 Conc: N.D.



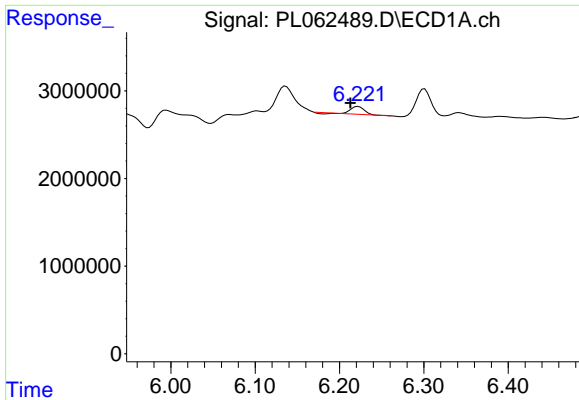
#23 Chlordane-1

R.T.: 4.277 min
 Delta R.T.: 0.008 min
 Response: 1807396
 Conc: 35.06 ng/ml



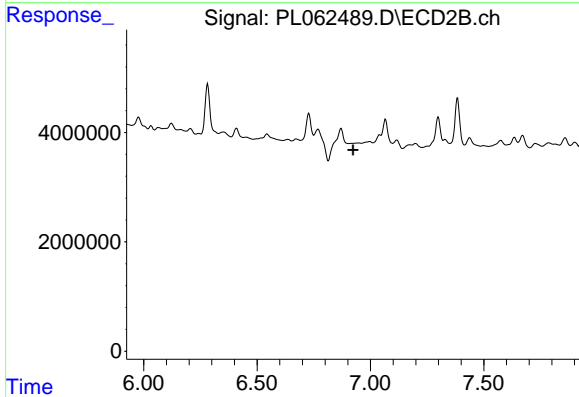
#23 Chlordane-1

R.T.: 0.000 min
 Exp R.T. : 4.938 min
 Response: 0
 Conc: N.D.

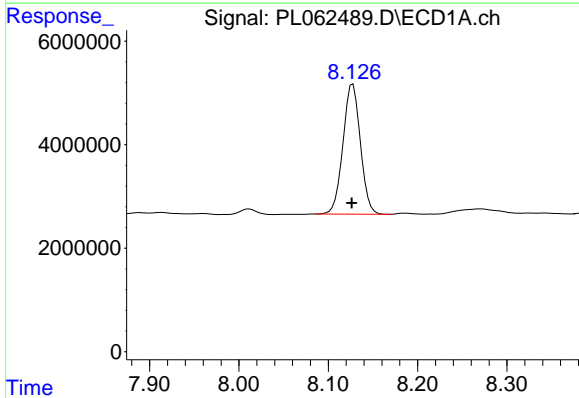


#27 Chlordane-5
 R.T.: 6.222 min
 Delta R.T.: 0.009 min
 Response: 821217
 Conc: 17.02 ng/ml

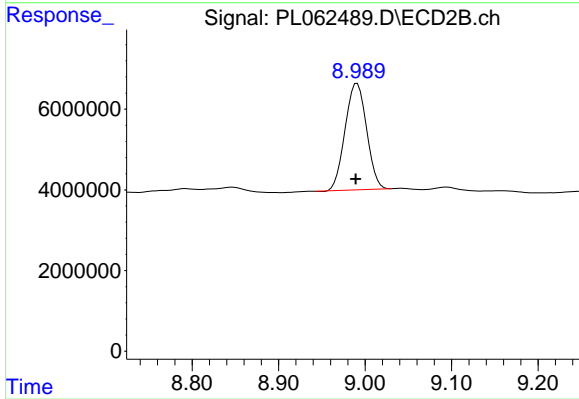
Instrument :
 ECD_L
 ClientSampleId :
 VNJ-240



#27 Chlordane-5
 R.T.: 0.000 min
 Exp R.T. : 6.923 min
 Response: 0
 Conc: N.D.



#28 Decachlorobiphenyl
 R.T.: 8.128 min
 Delta R.T.: 0.001 min
 Response: 33996082
 Conc: 21.19 ng/ml



#28 Decachlorobiphenyl
 R.T.: 8.991 min
 Delta R.T.: 0.002 min
 Response: 45432978
 Conc: 21.71 ng/ml