

Data Path : Z:\pestpcbsrv\HPCHEM1\ECD_L\Data\PL102121\
 Data File : PL070451.D
 Signal(s) : Signal #1: ECD1A.ch Signal #2: ECD2B.ch
 Acq On : 21 Oct 2021 14:17
 Operator : AR\AJ
 Sample : PB140103BS
 Misc : LOD PEST 0.1PPB
 ALS Vial : 6 Sample Multiplier: 1

Instrument :
 ECD_L
 ClientSampled :

Integration File signal 1: autoint1.e
 Integration File signal 2: autoint2.e
 Quant Time: Oct 22 01:52:47 2021
 Quant Method : Z:\pestpcbsrv\HPCHEM1\ECD_L\methods\PL092821.M
 Quant Title : GC Extractables
 QLast Update : Wed Sep 29 09:19:28 2021
 Response via : Initial Calibration
 Integrator: ChemStation

Volume Inj. : 1 µl
 Signal #1 Phase : ZB-MR2 Signal #2 Phase: ZB-MR1
 Signal #1 Info : 30M x 0.32mm x0.2 Signal #2 Info : 30M x 0.32mm x0.5µm

	Compound	RT#1	RT#2	Resp#1	Resp#2	ng/ml	ng/ml

System Monitoring Compounds							
1)	SA Tetrachlo...	4.626	5.562	9713164	25078744	19.411	18.961
28)	SA Decachlor...	10.391	11.486	14688214	24052550	21.226	19.875
Target Compounds							
2)	A alpha-BHC	5.332	6.144	35493570	95731918	47.950	48.944
3)	MA gamma-BHC...	5.755	6.540	35933032	89413837	51.461	48.803
4)	MA Heptachlor	6.164	7.189	37272817	88350865	48.929	47.374
5)	MB Aldrin	6.489	7.560	34298598	81384538	47.517	47.233
6)	B beta-BHC	6.136	6.795	17030955	43881610	50.727	51.034
7)	B delta-BHC	6.397	7.062	35907583	91487492	51.940	47.266
8)	B Heptachlo...	7.066	8.027	34218760	75305425	48.798	48.589
9)	A Endosulfan I	7.469	8.433	32529929	71796728	48.676	48.800
10)	B gamma-Chl...	7.342	8.297	35337143	77660100	48.793	48.554
11)	B alpha-Chl...	7.412	8.378	35158882	75905305	48.274	48.128
12)	B 4,4'-DDE	7.626	8.566	32087132	76865651	50.415	49.628
13)	MA Dieldrin	7.755	8.723	34437993	75107302	50.123	49.202
14)	MA Endrin	8.047	8.962	30182303	59555788	47.762	47.412
15)	B Endosulfa...	8.357	9.197	31192741	63390912	49.170	53.049
16)	A 4,4'-DDD	8.212	9.106	28130220	61040398	50.157	51.675
17)	MA 4,4'-DDT	8.473	9.423	29123754	59518447	47.610	45.544
18)	B Endrin al...	8.546	9.332	27872598	54377001	56.256	56.377
19)	B Endosulfa...	8.776	9.569	33447751	62371827	50.697	50.967
20)	A Methoxychlor	9.067	9.909	17417613	30170329	46.646	46.621
21)	B Endrin ke...	9.295	10.068	40313150	70742389	52.757	52.885
22)	Mirex	9.481	10.534	32952997	49238720	49.960	49.982
24)	Chlordane-2	0.000	7.560f	0	81384538	N.D.	1510.301 #
25)	Chlordane-3	7.342	8.297	35337143	77660100	516.504	366.694 #
26)	Chlordane-4	7.412	8.378	35158882	75905305	481.088	298.654 #
27)	Chlordane-5	8.357	0.000	31192741	0	1568.416	N.D. #

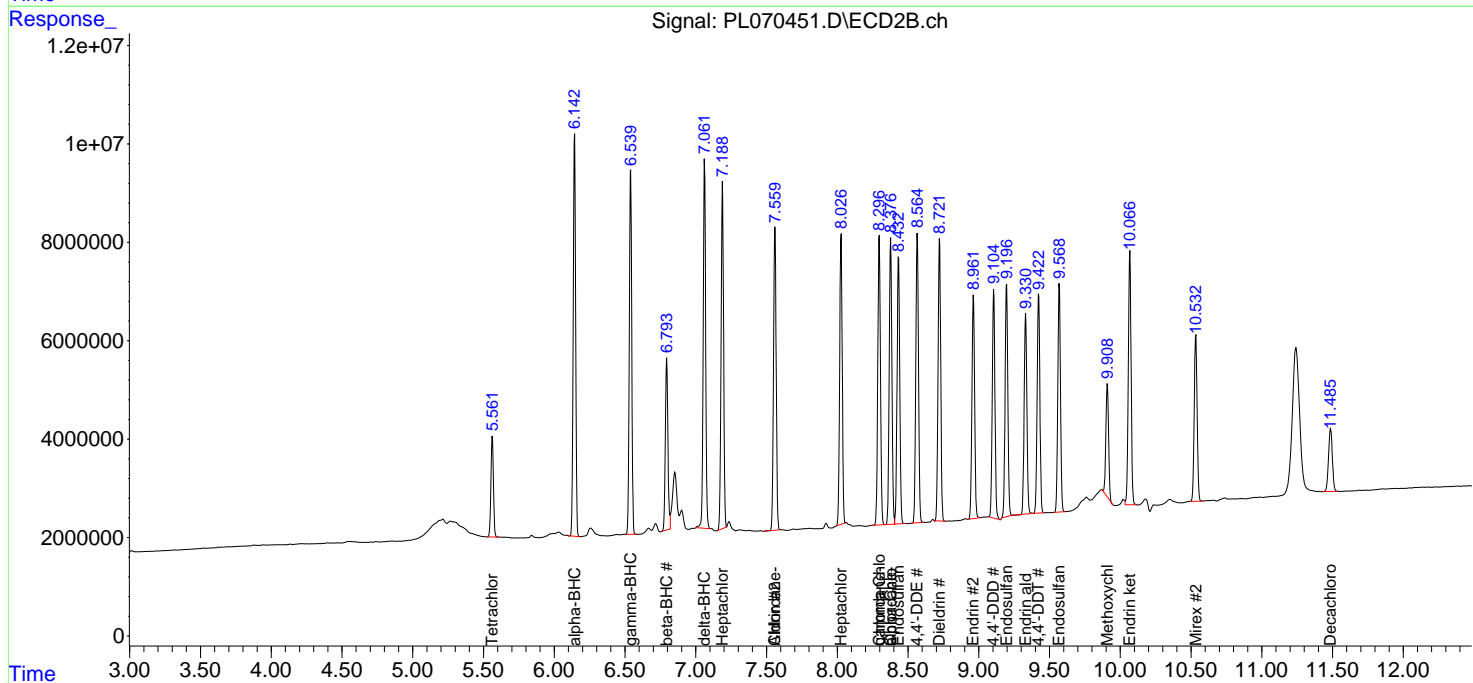
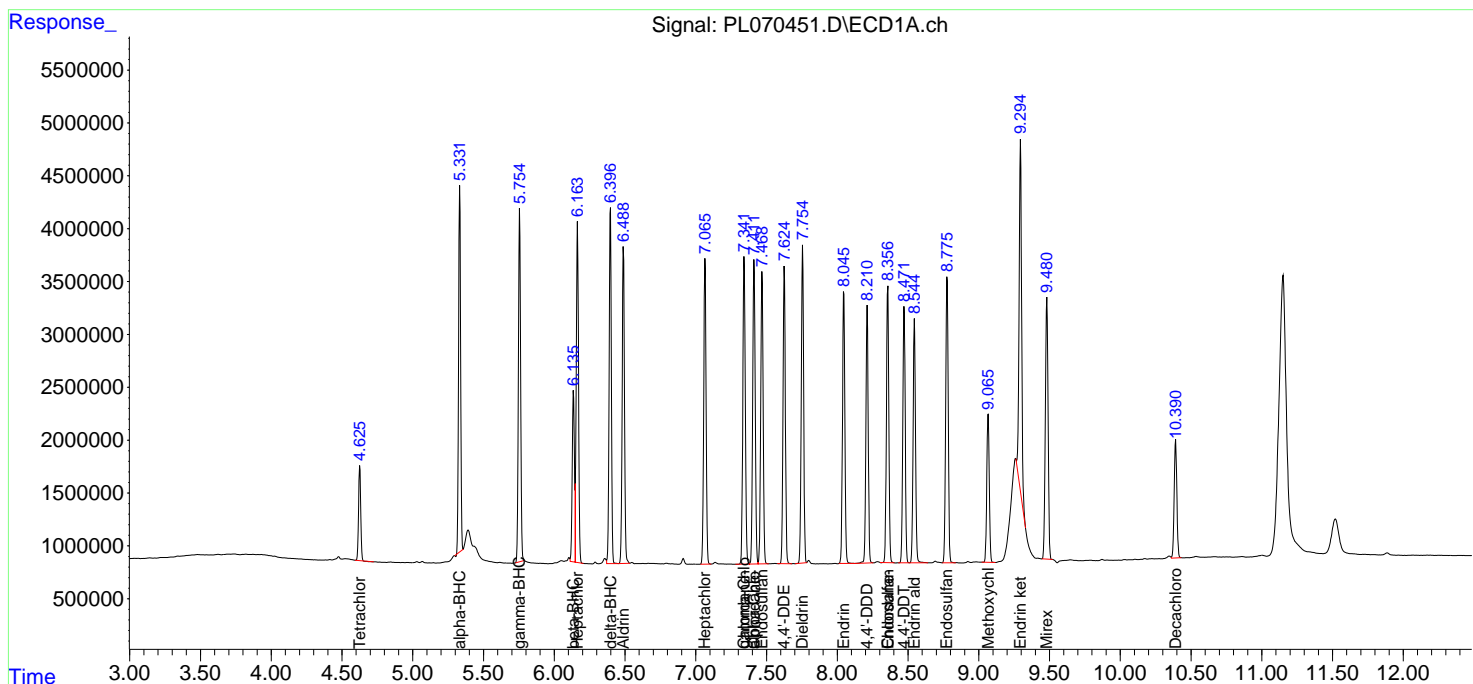
(f)=RT Delta > 1/2 Window (#)=Amounts differ by > 25% (m)=manual int.

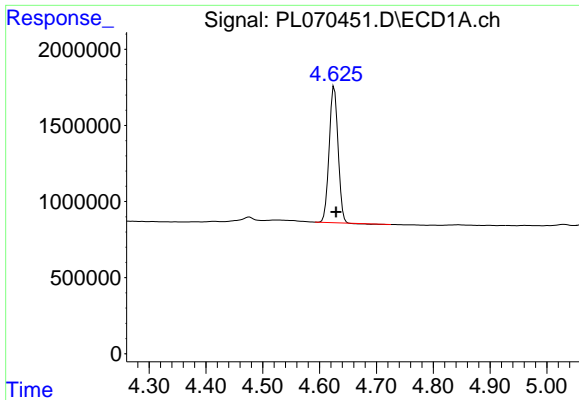
Data Path : Z:\pestpcbsrv\HPCHEM1\ECD_L\Data\PL102121\
 Data File : PL070451.D
 Signal(s) : Signal #1: ECD1A.ch Signal #2: ECD2B.ch
 Acq On : 21 Oct 2021 14:17
 Operator : AR\AJ
 Sample : PB140103BS
 Misc : LOD PEST 0.1PPB
 ALS Vial : 6 Sample Multiplier: 1

Instrument :
 ECD_L
 ClientSampled :

Integration File signal 1: autoint1.e
 Integration File signal 2: autoint2.e
 Quant Time: Oct 22 01:52:47 2021
 Quant Method : Z:\pestpcbsrv\HPCHEM1\ECD_L\methods\PL092821.M
 Quant Title : GC Extractables
 QLast Update : Wed Sep 29 09:19:28 2021
 Response via : Initial Calibration
 Integrator: ChemStation

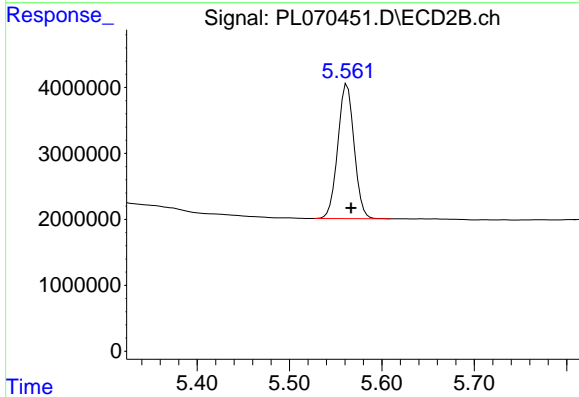
Volume Inj. : 1 µl
 Signal #1 Phase : ZB-MR2 Signal #2 Phase: ZB-MR1
 Signal #1 Info : 30M x 0.32mm x0.2 Signal #2 Info : 30M x 0.32mm x0.5µm



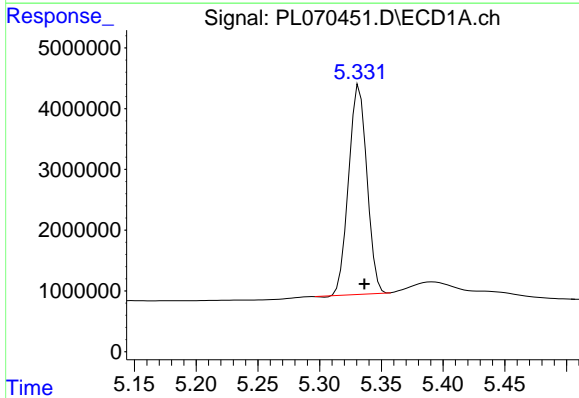


#1 Tetrachloro-m-xylene
R.T.: 4.626 min
Delta R.T.: -0.003 min
Response: 9713164
Conc: 19.41 ng/ml

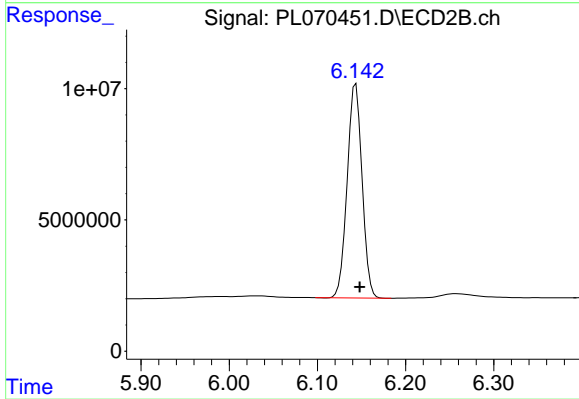
Instrument :
ECD_L
ClientSampleId :



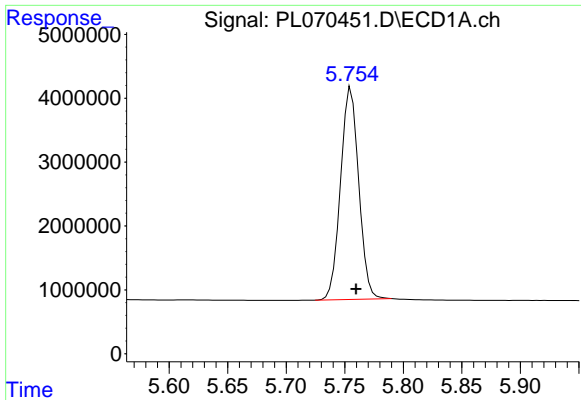
#1 Tetrachloro-m-xylene
R.T.: 5.562 min
Delta R.T.: -0.004 min
Response: 25078744
Conc: 18.96 ng/ml



#2 alpha-BHC
R.T.: 5.332 min
Delta R.T.: -0.004 min
Response: 35493570
Conc: 47.95 ng/ml

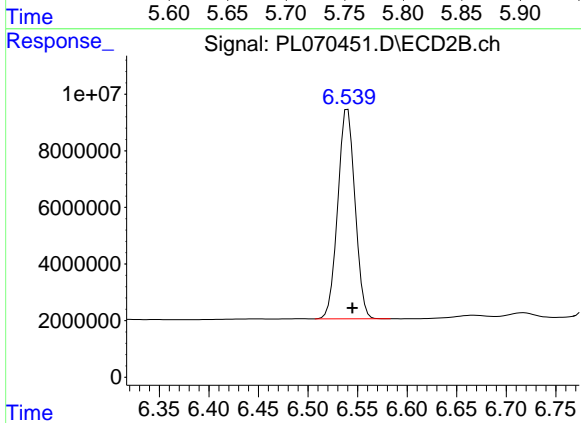


#2 alpha-BHC
R.T.: 6.144 min
Delta R.T.: -0.004 min
Response: 95731918
Conc: 48.94 ng/ml

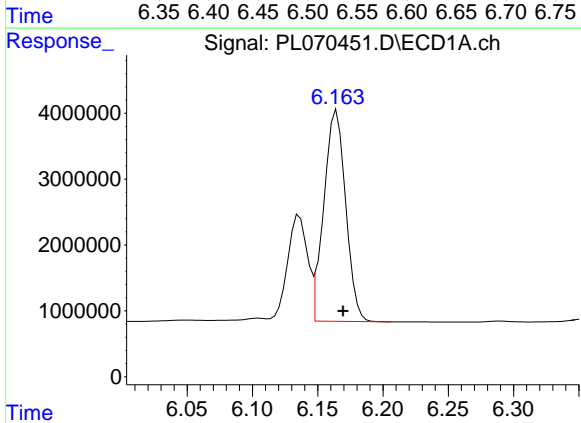


#3 gamma-BHC (Lindane)
 R.T.: 5.755 min
 Delta R.T.: -0.004 min
 Response: 35933032
 Conc: 51.46 ng/ml

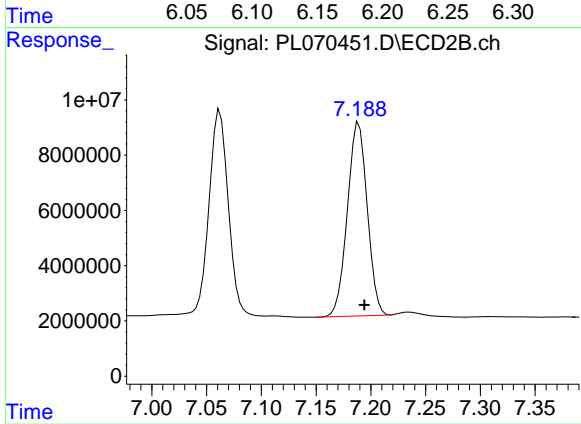
Instrument :
 ECD_L
 ClientSampled :



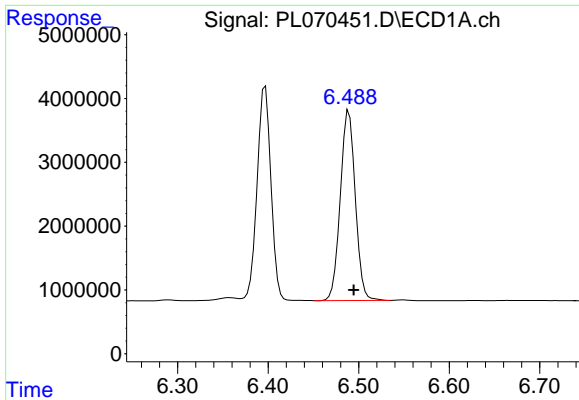
#3 gamma-BHC (Lindane)
 R.T.: 6.540 min
 Delta R.T.: -0.005 min
 Response: 89413837
 Conc: 48.80 ng/ml



#4 Heptachlor
 R.T.: 6.164 min
 Delta R.T.: -0.005 min
 Response: 37272817
 Conc: 48.93 ng/ml

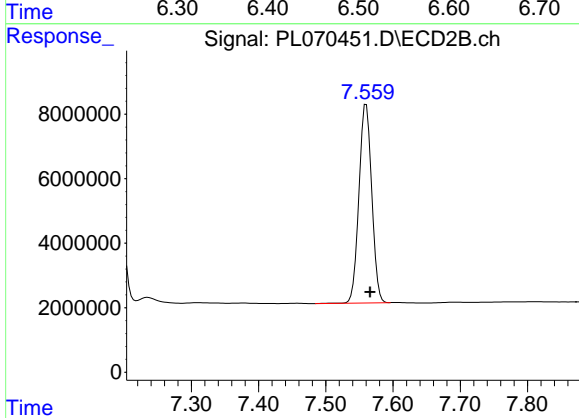


#4 Heptachlor
 R.T.: 7.189 min
 Delta R.T.: -0.005 min
 Response: 88350865
 Conc: 47.37 ng/ml

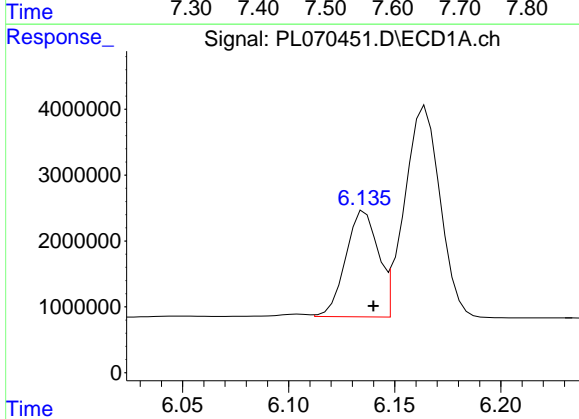


#5 Aldrin
 R.T.: 6.489 min
 Delta R.T.: -0.005 min
 Response: 34298598
 Conc: 47.52 ng/ml

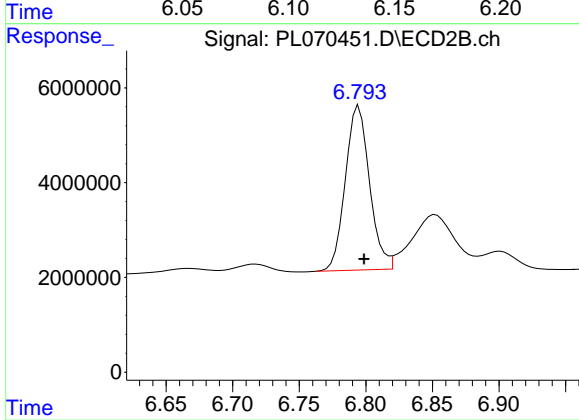
Instrument :
 ECD_L
 ClientSampled :



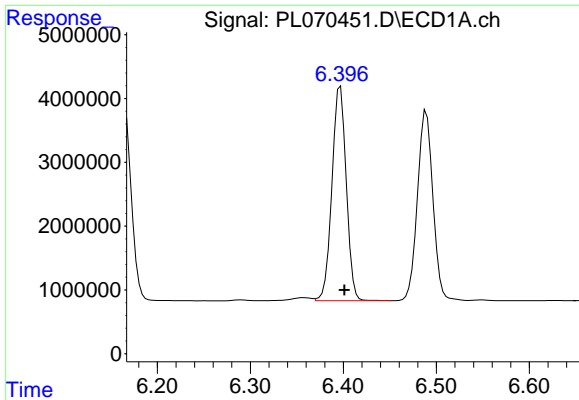
#5 Aldrin
 R.T.: 7.560 min
 Delta R.T.: -0.006 min
 Response: 81384538
 Conc: 47.23 ng/ml



#6 beta-BHC
 R.T.: 6.136 min
 Delta R.T.: -0.004 min
 Response: 17030955
 Conc: 50.73 ng/ml

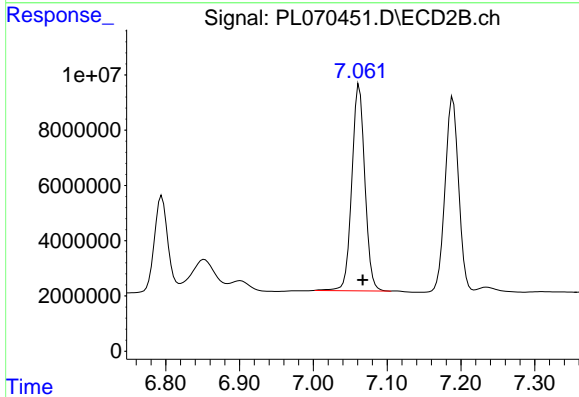


#6 beta-BHC
 R.T.: 6.795 min
 Delta R.T.: -0.004 min
 Response: 43881610
 Conc: 51.03 ng/ml

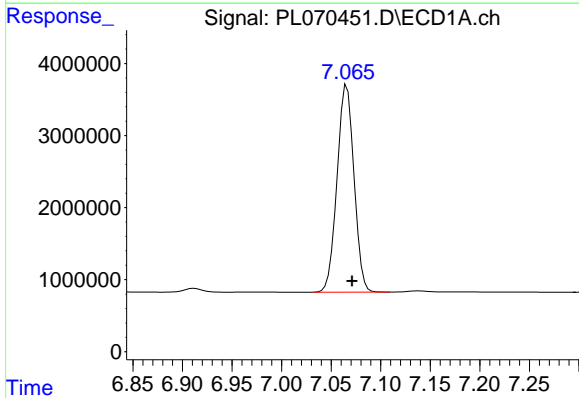


#7 delta-BHC
 R.T.: 6.397 min
 Delta R.T.: -0.004 min
 Response: 35907583
 Conc: 51.94 ng/ml

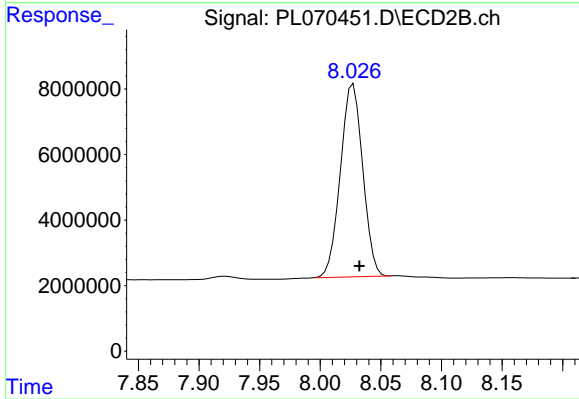
Instrument :
 ECD_L
 ClientSampled :



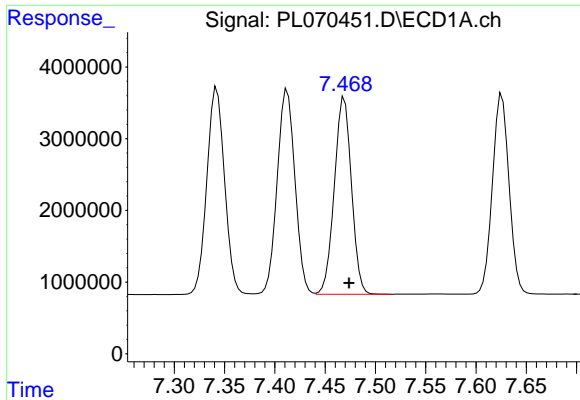
#7 delta-BHC
 R.T.: 7.062 min
 Delta R.T.: -0.005 min
 Response: 91487492
 Conc: 47.27 ng/ml



#8 Heptachlor epoxide
 R.T.: 7.066 min
 Delta R.T.: -0.005 min
 Response: 34218760
 Conc: 48.80 ng/ml



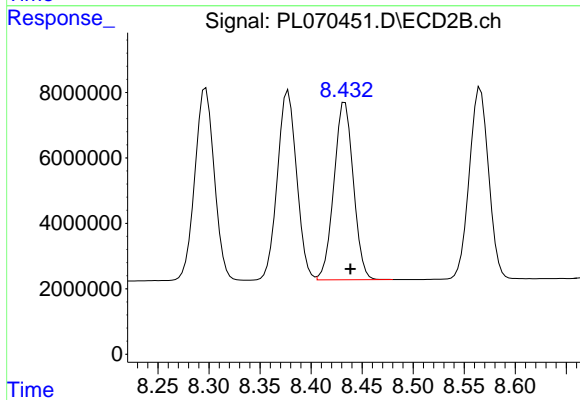
#8 Heptachlor epoxide
 R.T.: 8.027 min
 Delta R.T.: -0.005 min
 Response: 75305425
 Conc: 48.59 ng/ml



#9 Endosulfan I

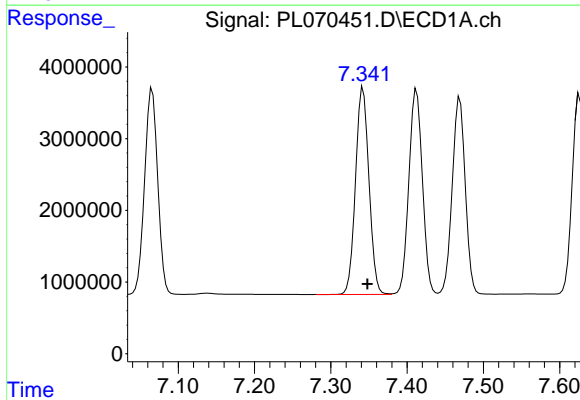
R.T.: 7.469 min
 Delta R.T.: -0.005 min
 Response: 32529929
 Conc: 48.68 ng/ml

Instrument :
 ECD_L
 ClientSampled :



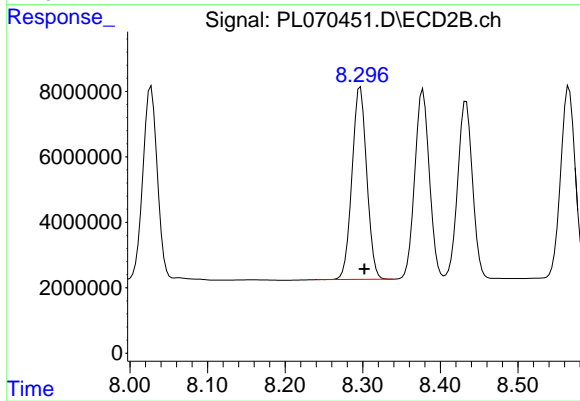
#9 Endosulfan I

R.T.: 8.433 min
 Delta R.T.: -0.005 min
 Response: 71796728
 Conc: 48.80 ng/ml



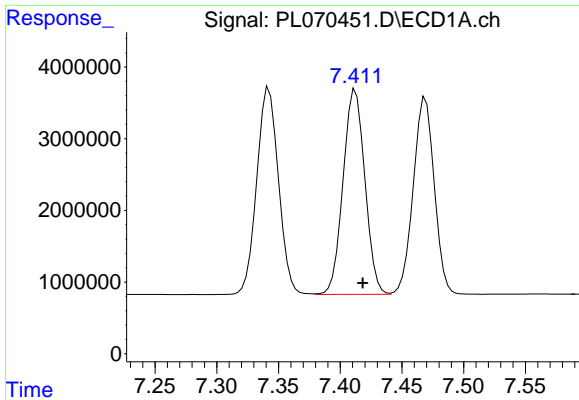
#10 gamma-Chlordane

R.T.: 7.342 min
 Delta R.T.: -0.006 min
 Response: 35337143
 Conc: 48.79 ng/ml



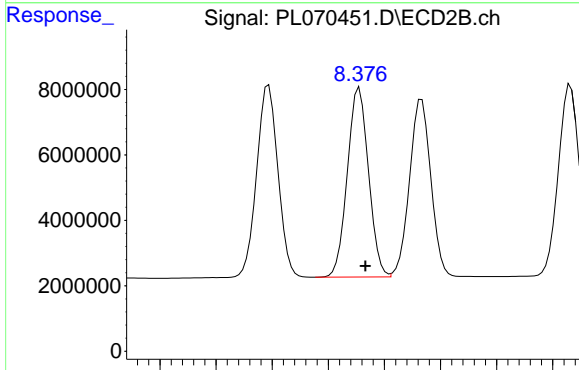
#10 gamma-Chlordane

R.T.: 8.297 min
 Delta R.T.: -0.005 min
 Response: 77660100
 Conc: 48.55 ng/ml

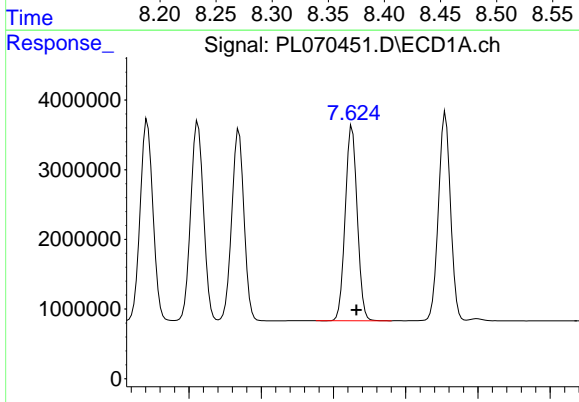


#11 alpha-Chlordane
R.T.: 7.412 min
Delta R.T.: -0.006 min
Response: 35158882
Conc: 48.27 ng/ml

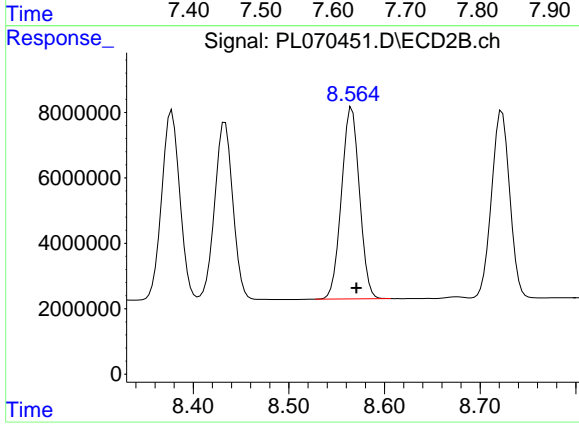
Instrument :
ECD_L
ClientSampled :



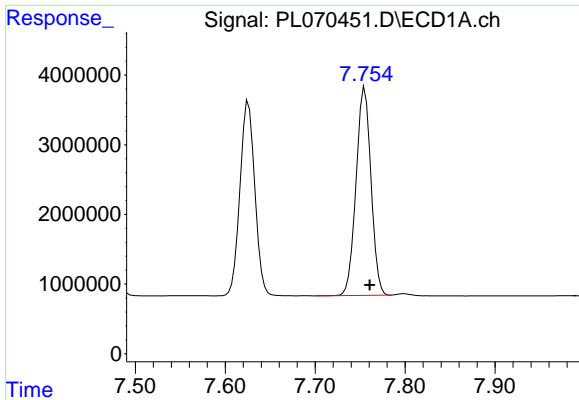
#11 alpha-Chlordane
R.T.: 8.378 min
Delta R.T.: -0.006 min
Response: 75905305
Conc: 48.13 ng/ml



#12 4,4'-DDE
R.T.: 7.626 min
Delta R.T.: -0.006 min
Response: 32087132
Conc: 50.41 ng/ml

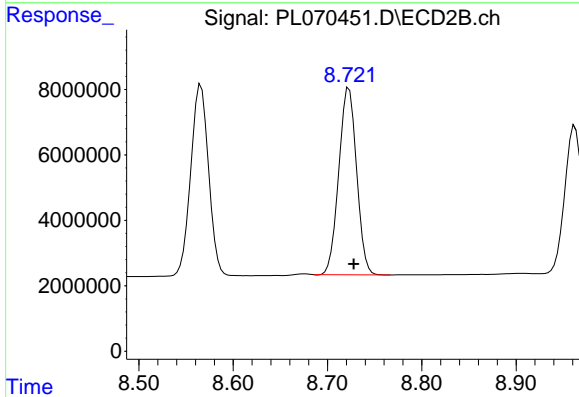


#12 4,4'-DDE
R.T.: 8.566 min
Delta R.T.: -0.005 min
Response: 76865651
Conc: 49.63 ng/ml

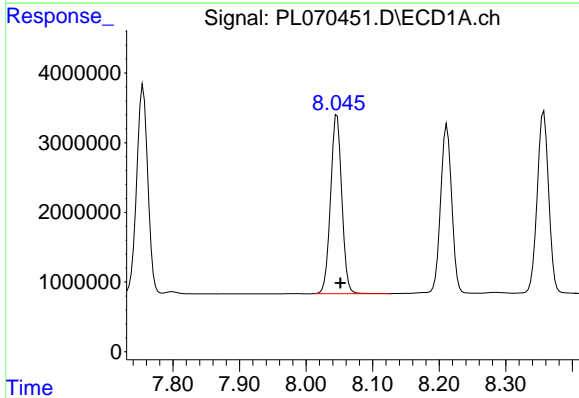


#13 Dieldrin
 R.T.: 7.755 min
 Delta R.T.: -0.006 min
 Response: 34437993
 Conc: 50.12 ng/ml

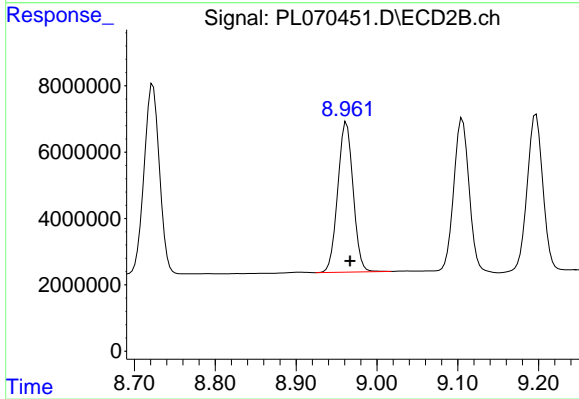
Instrument :
 ECD_L
 ClientSampled :



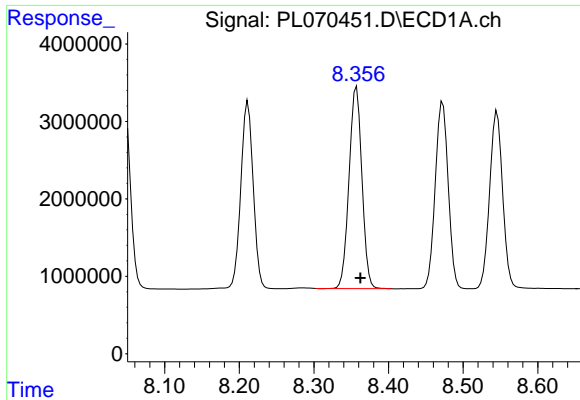
#13 Dieldrin
 R.T.: 8.723 min
 Delta R.T.: -0.005 min
 Response: 75107302
 Conc: 49.20 ng/ml



#14 Endrin
 R.T.: 8.047 min
 Delta R.T.: -0.005 min
 Response: 30182303
 Conc: 47.76 ng/ml

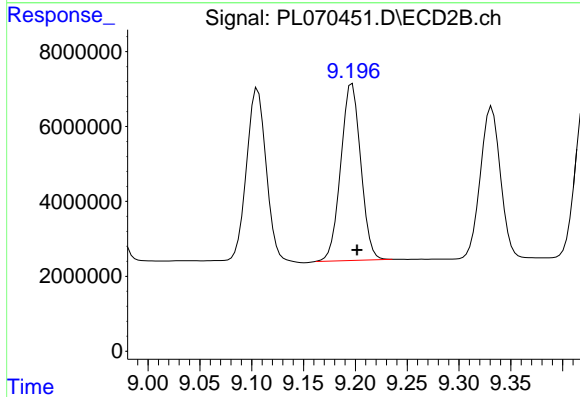


#14 Endrin
 R.T.: 8.962 min
 Delta R.T.: -0.005 min
 Response: 59555788
 Conc: 47.41 ng/ml

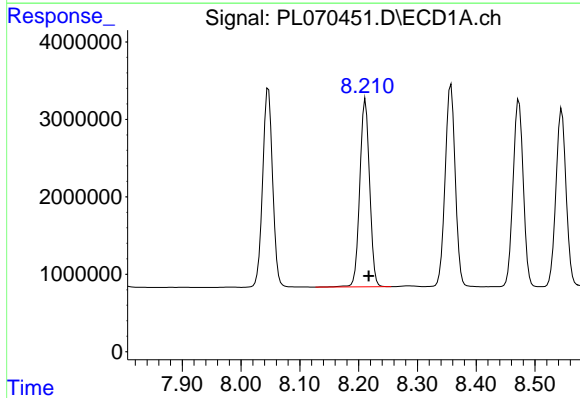


#15 Endosulfan II
 R.T.: 8.357 min
 Delta R.T.: -0.005 min
 Response: 31192741
 Conc: 49.17 ng/ml

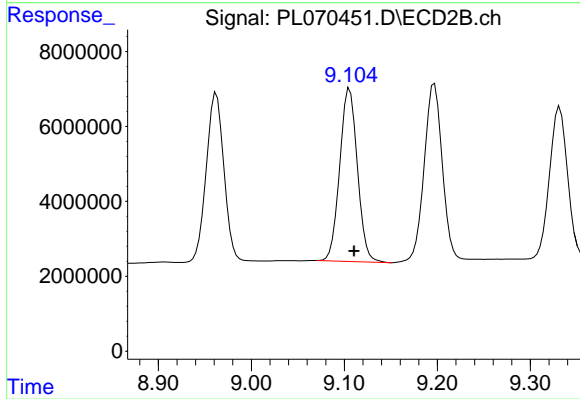
Instrument :
 ECD_L
 ClientSampled :



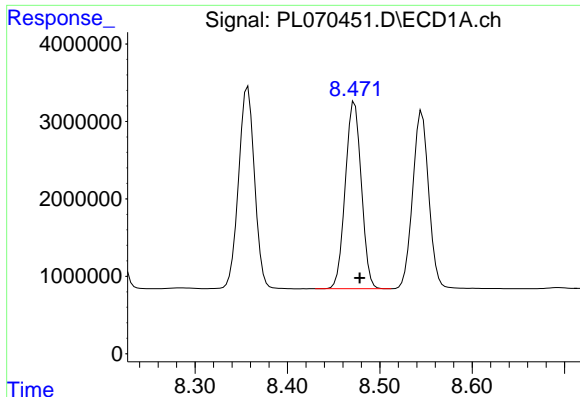
#15 Endosulfan II
 R.T.: 9.197 min
 Delta R.T.: -0.005 min
 Response: 63390912
 Conc: 53.05 ng/ml



#16 4,4'-DDD
 R.T.: 8.212 min
 Delta R.T.: -0.006 min
 Response: 28130220
 Conc: 50.16 ng/ml



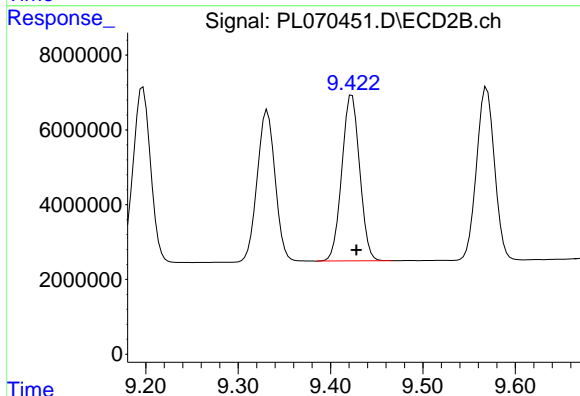
#16 4,4'-DDD
 R.T.: 9.106 min
 Delta R.T.: -0.005 min
 Response: 61040398
 Conc: 51.67 ng/ml



#17 4,4'-DDT

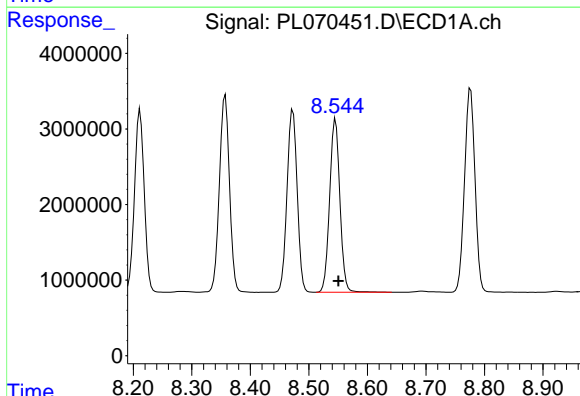
R.T.: 8.473 min
Delta R.T.: -0.006 min
Response: 29123754
Conc: 47.61 ng/ml

Instrument :
ECD_L
ClientSampled :



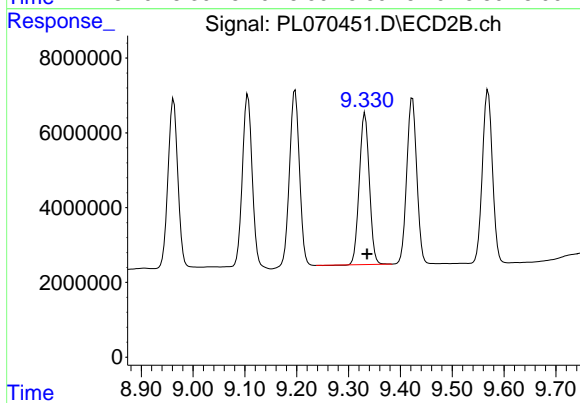
#17 4,4'-DDT

R.T.: 9.423 min
Delta R.T.: -0.005 min
Response: 59518447
Conc: 45.54 ng/ml



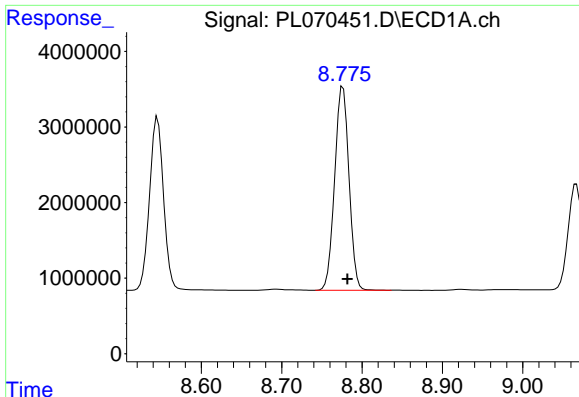
#18 Endrin aldehyde

R.T.: 8.546 min
Delta R.T.: -0.005 min
Response: 27872598
Conc: 56.26 ng/ml



#18 Endrin aldehyde

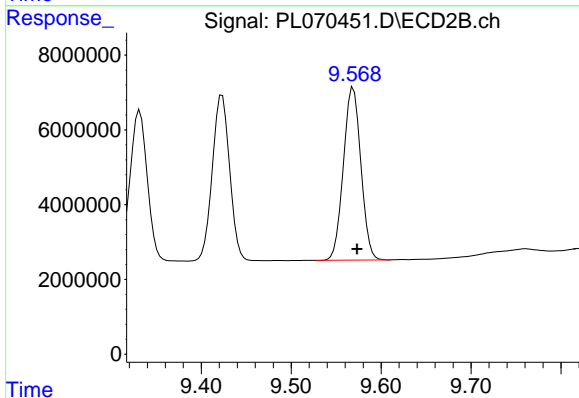
R.T.: 9.332 min
Delta R.T.: -0.004 min
Response: 54377001
Conc: 56.38 ng/ml



#19 Endosulfan Sulfate

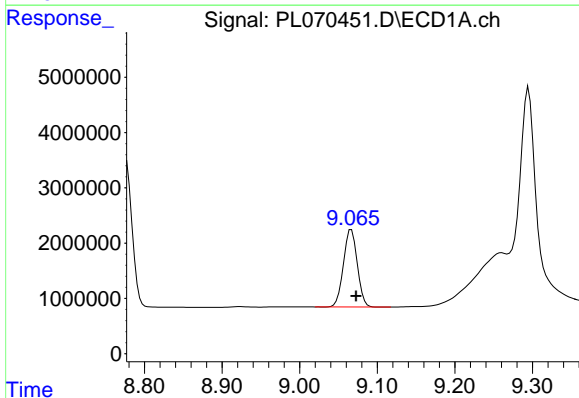
R.T.: 8.776 min
Delta R.T.: -0.005 min
Response: 33447751
Conc: 50.70 ng/ml

Instrument :
ECD_L
ClientSampled :



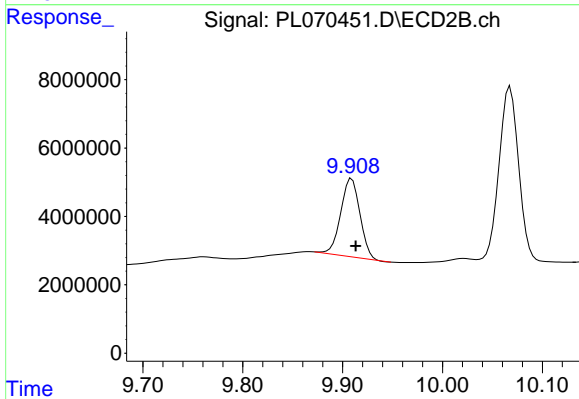
#19 Endosulfan Sulfate

R.T.: 9.569 min
Delta R.T.: -0.004 min
Response: 62371827
Conc: 50.97 ng/ml



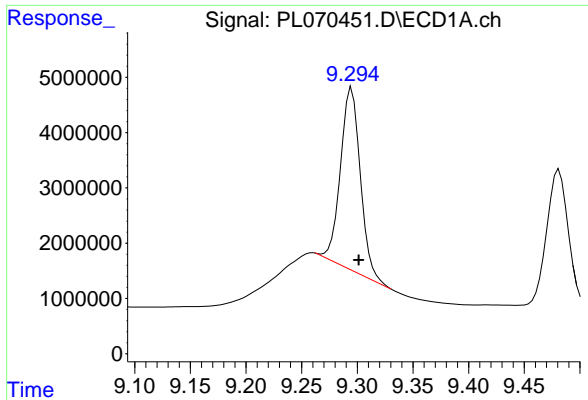
#20 Methoxychlor

R.T.: 9.067 min
Delta R.T.: -0.006 min
Response: 17417613
Conc: 46.65 ng/ml



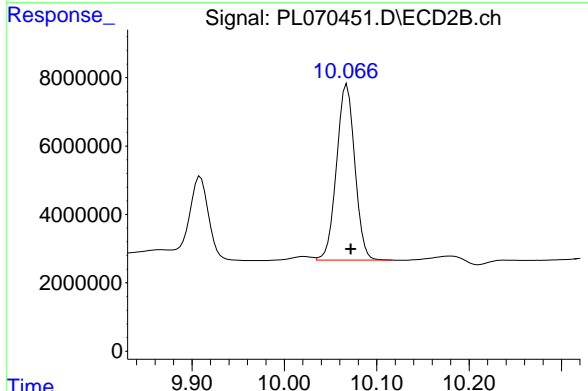
#20 Methoxychlor

R.T.: 9.909 min
Delta R.T.: -0.004 min
Response: 30170329
Conc: 46.62 ng/ml

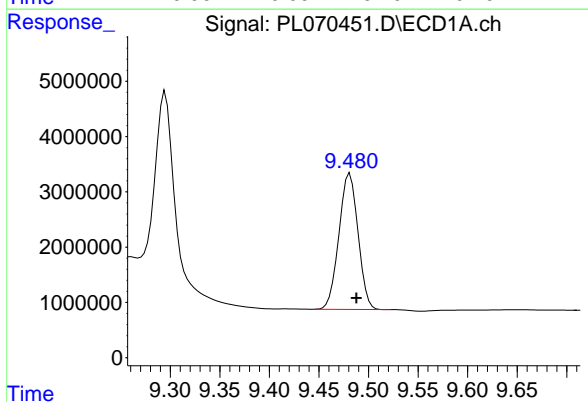


#21 Endrin ketone
 R.T.: 9.295 min
 Delta R.T.: -0.006 min
 Response: 40313150
 Conc: 52.76 ng/ml

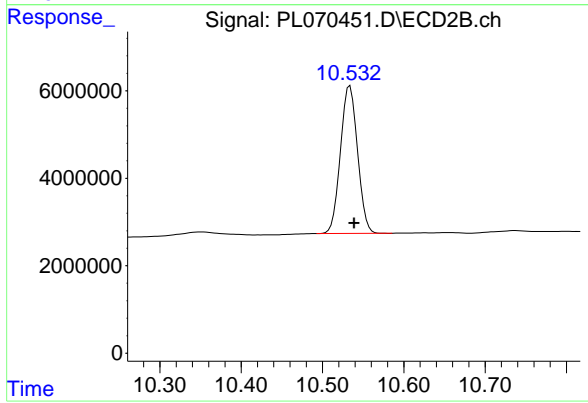
Instrument :
 ECD_L
 ClientSampled :



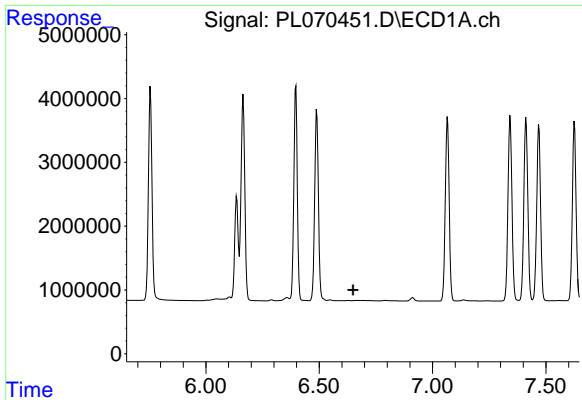
#21 Endrin ketone
 R.T.: 10.068 min
 Delta R.T.: -0.004 min
 Response: 70742389
 Conc: 52.89 ng/ml



#22 Mirex
 R.T.: 9.481 min
 Delta R.T.: -0.006 min
 Response: 32952997
 Conc: 49.96 ng/ml



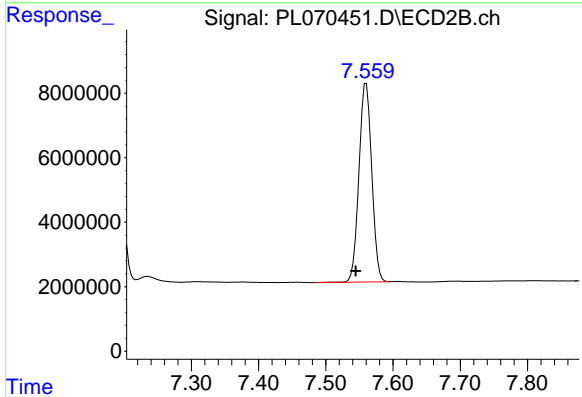
#22 Mirex
 R.T.: 10.534 min
 Delta R.T.: -0.005 min
 Response: 49238720
 Conc: 49.98 ng/ml



#24 Chlordane-2

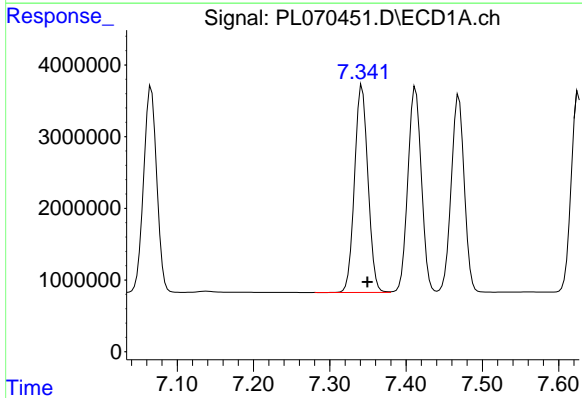
R.T.: 0.000 min
 Exp R.T.: 6.649 min
 Response: 0
 Conc: N.D.

Instrument :
 ECD_L
 ClientSampled :



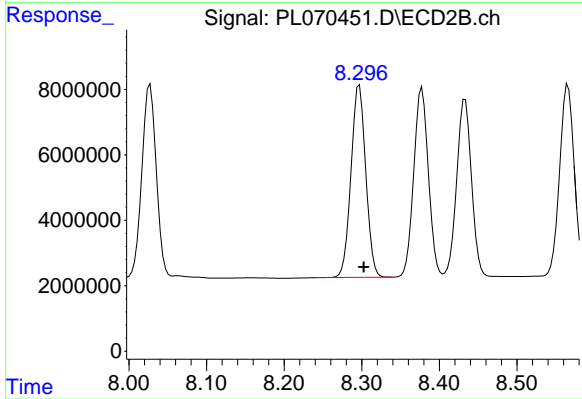
#24 Chlordane-2

R.T.: 7.560 min
 Delta R.T.: 0.016 min
 Response: 81384538
 Conc: 1510.30 ng/ml



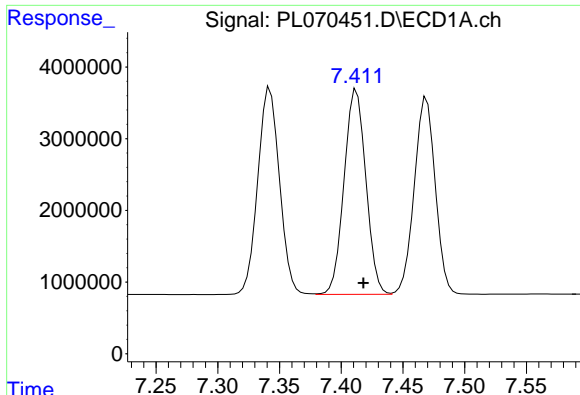
#25 Chlordane-3

R.T.: 7.342 min
 Delta R.T.: -0.007 min
 Response: 35337143
 Conc: 516.50 ng/ml



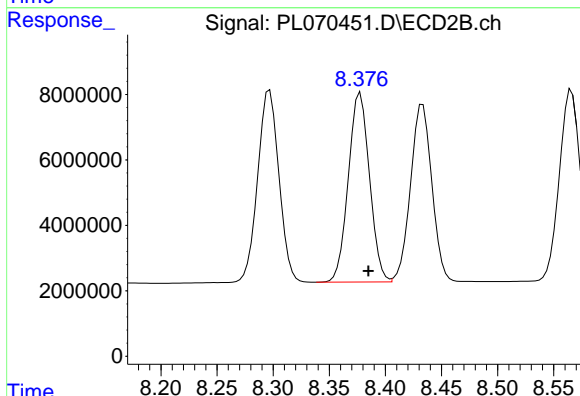
#25 Chlordane-3

R.T.: 8.297 min
 Delta R.T.: -0.006 min
 Response: 77660100
 Conc: 366.69 ng/ml

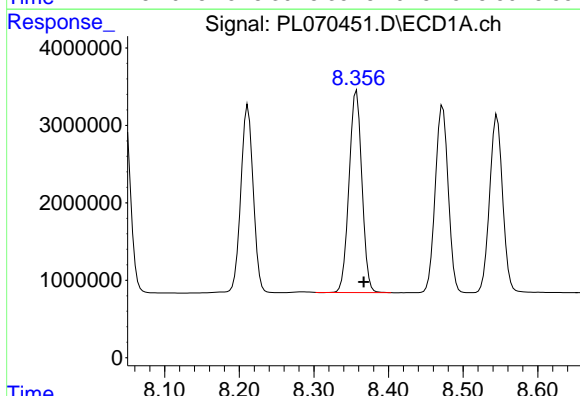


#26 Chlordane-4
 R.T.: 7.412 min
 Delta R.T.: -0.006 min
 Response: 35158882
 Conc: 481.09 ng/ml

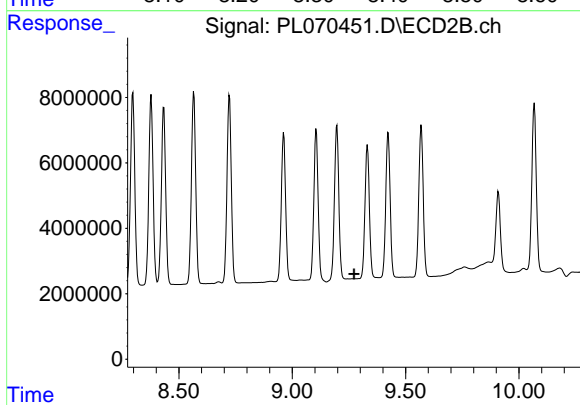
Instrument :
 ECD_L
 ClientSampled :



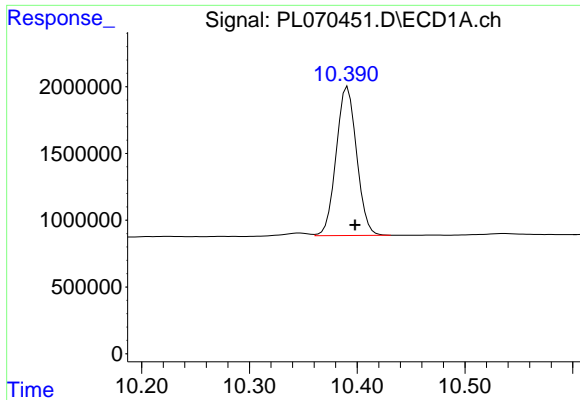
#26 Chlordane-4
 R.T.: 8.378 min
 Delta R.T.: -0.007 min
 Response: 75905305
 Conc: 298.65 ng/ml



#27 Chlordane-5
 R.T.: 8.357 min
 Delta R.T.: -0.010 min
 Response: 31192741
 Conc: 1568.42 ng/ml



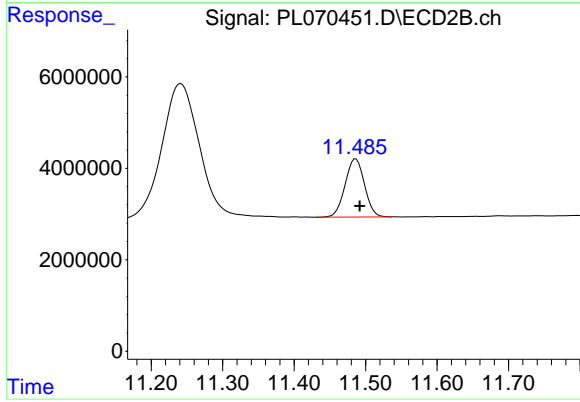
#27 Chlordane-5
 R.T.: 0.000 min
 Exp R.T. : 9.273 min
 Response: 0
 Conc: N.D.



#28 Decachlorobiphenyl

R.T.: 10.391 min
Delta R.T.: -0.007 min
Response: 14688214
Conc: 21.23 ng/ml

Instrument :
ECD_L
ClientSampleId :



#28 Decachlorobiphenyl

R.T.: 11.486 min
Delta R.T.: -0.005 min
Response: 24052550
Conc: 19.88 ng/ml