

Data Path : Z:\pestpcbsrv\HPCHEM1\ECD_L\Data\PL102121\
 Data File : PL070463.D
 Signal(s) : Signal #1: ECD1A.ch Signal #2: ECD2B.ch
 Acq On : 21 Oct 2021 18:58
 Operator : AR\AJ
 Sample : M4294-04
 Misc :
 ALS Vial : 15 Sample Multiplier: 1

Instrument :
 ECD_L
 ClientSampleId :

Integration File signal 1: autoint1.e
 Integration File signal 2: autoint2.e
 Quant Time: Oct 22 01:56:22 2021
 Quant Method : Z:\pestpcbsrv\HPCHEM1\ECD_L\methods\PL092821.M
 Quant Title : GC Extractables
 QLast Update : Wed Sep 29 09:19:28 2021
 Response via : Initial Calibration
 Integrator: ChemStation

Volume Inj. : 1 µl
 Signal #1 Phase : ZB-MR2 Signal #2 Phase: ZB-MR1
 Signal #1 Info : 30M x 0.32mm x0.2 Signal #2 Info : 30M x 0.32mm x0.5µm

Compound	RT#1	RT#2	Resp#1	Resp#2	ng/ml	ng/ml
System Monitoring Compounds						
1) SA Tetrachlo...	4.623	5.560	7560628	19705482	15.110	14.899
28) SA Decachlor...	10.389	11.481	9228028	17342463	13.336	14.331
Target Compounds						
7) B delta-BHC	0.000	7.079	0	797139	N.D.	0.412 #
21) B Endrin ke...	0.000	10.045f	0	2950525	N.D.	2.206 #
27) Chlordane-5	0.000	9.269	0	866240	N.D.	19.948 #

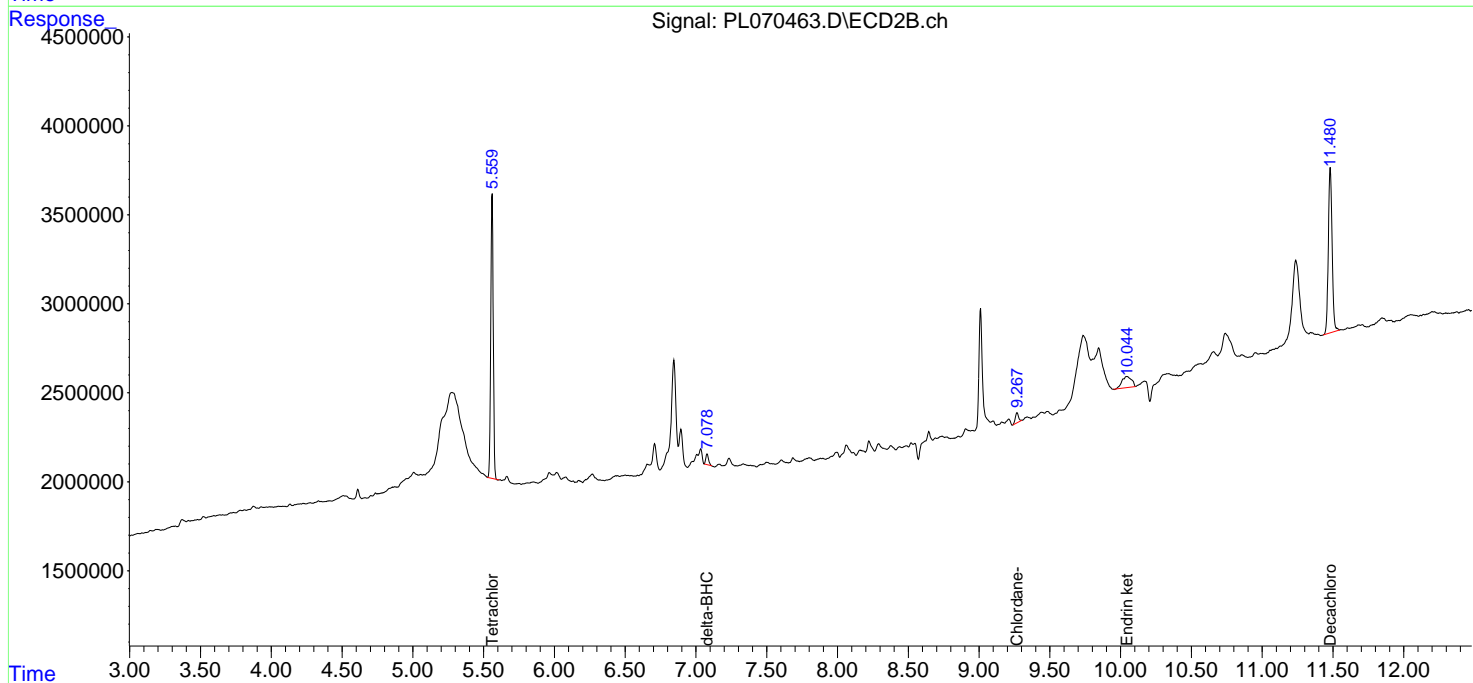
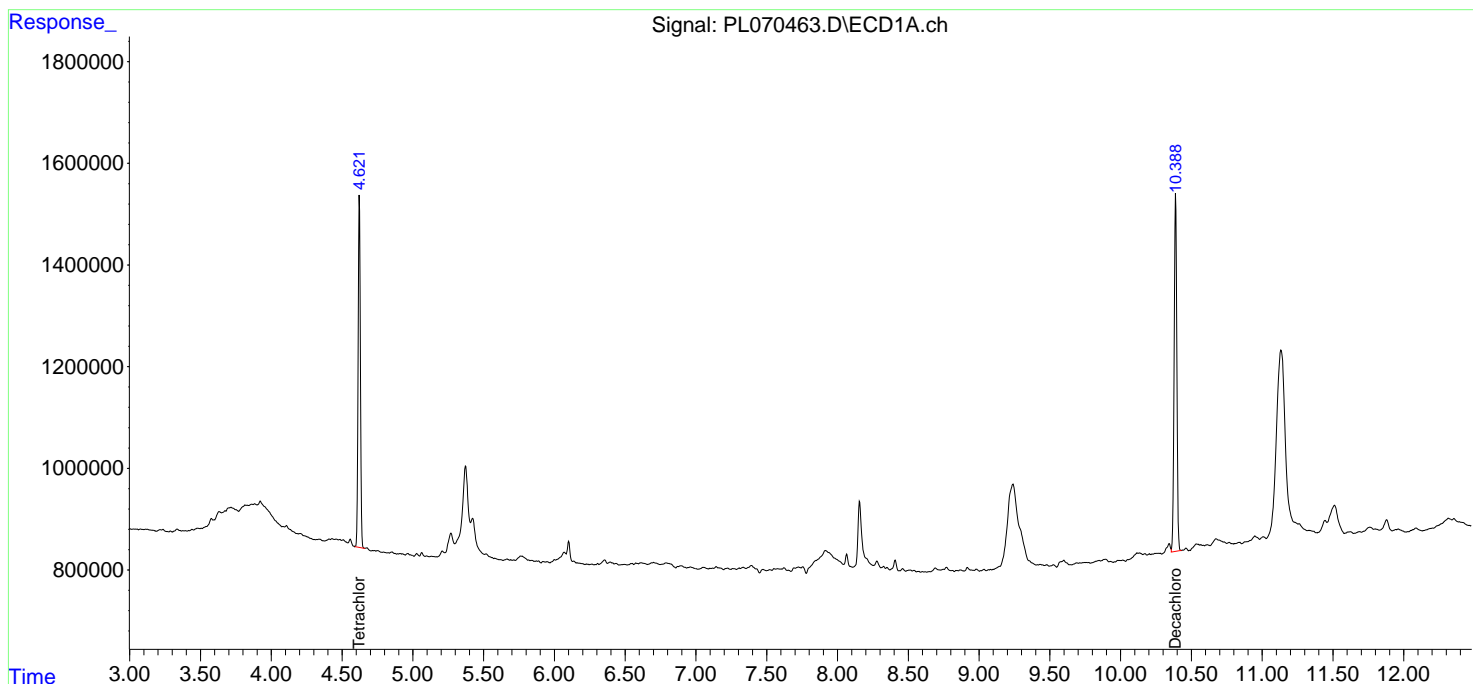
(f)=RT Delta > 1/2 Window (#)=Amounts differ by > 25% (m)=manual int.

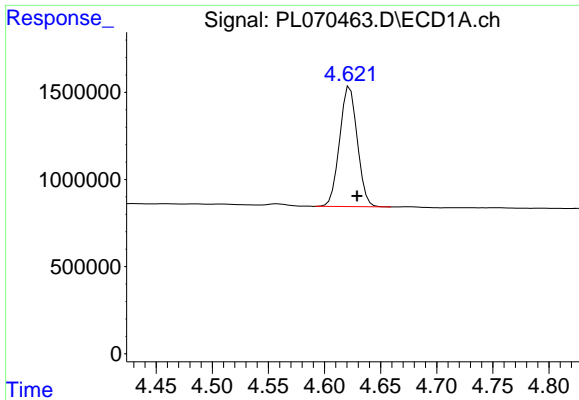
Data Path : Z:\pestpcbsrv\HPCHEM1\ECD_L\Data\PL102121\
 Data File : PL070463.D
 Signal(s) : Signal #1: ECD1A.ch Signal #2: ECD2B.ch
 Acq On : 21 Oct 2021 18:58
 Operator : AR\AJ
 Sample : M4294-04
 Misc :
 ALS Vial : 15 Sample Multiplier: 1

Instrument :
 ECD_L
 ClientSampled :

Integration File signal 1: autoint1.e
 Integration File signal 2: autoint2.e
 Quant Time: Oct 22 01:56:22 2021
 Quant Method : Z:\pestpcbsrv\HPCHEM1\ECD_L\methods\PL092821.M
 Quant Title : GC Extractables
 QLast Update : Wed Sep 29 09:19:28 2021
 Response via : Initial Calibration
 Integrator: ChemStation

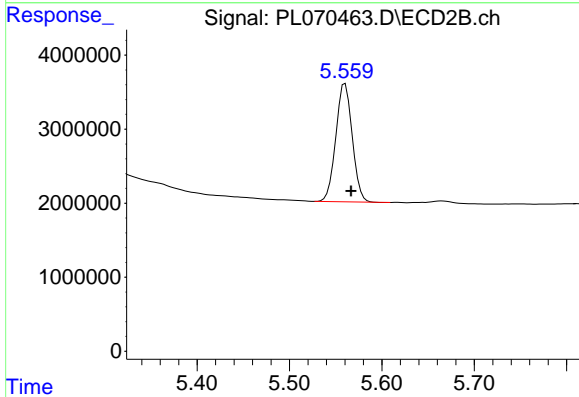
Volume Inj. : 1 µl
 Signal #1 Phase : ZB-MR2 Signal #2 Phase: ZB-MR1
 Signal #1 Info : 30M x 0.32mm x0.2 Signal #2 Info : 30M x 0.32mm x0.5µm



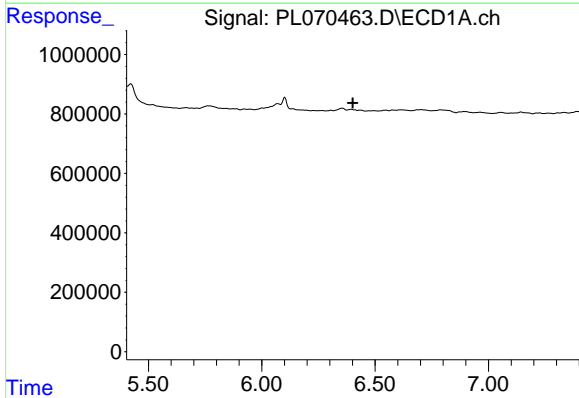


#1 Tetrachloro-m-xylene
 R.T.: 4.623 min
 Delta R.T.: -0.006 min
 Response: 7560628
 Conc: 15.11 ng/ml

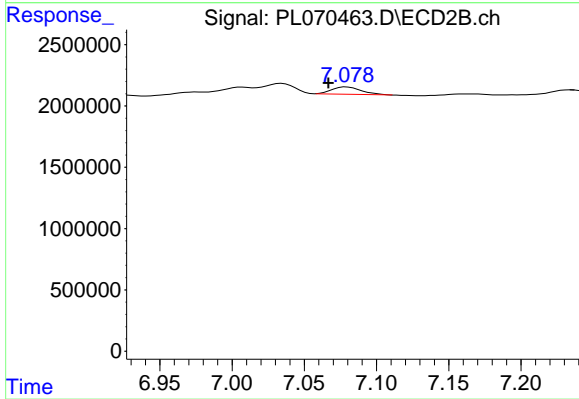
Instrument :
 ECD_L
 ClientSampleId :



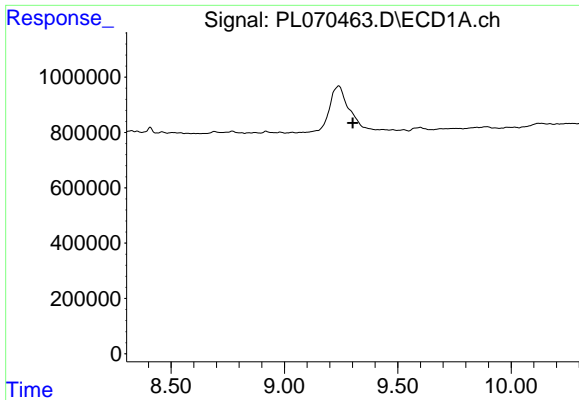
#1 Tetrachloro-m-xylene
 R.T.: 5.560 min
 Delta R.T.: -0.006 min
 Response: 19705482
 Conc: 14.90 ng/ml



#7 delta-BHC
 R.T.: 0.000 min
 Exp R.T. : 6.401 min
 Response: 0
 Conc: N.D.



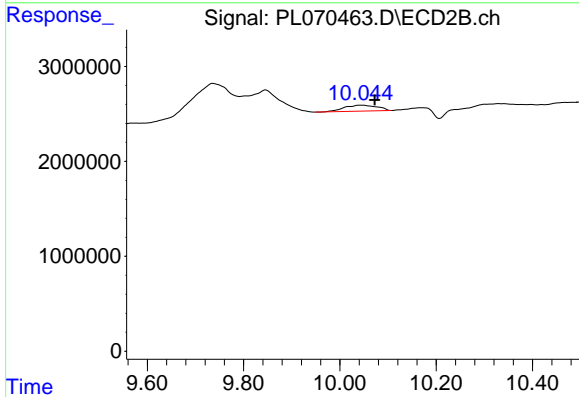
#7 delta-BHC
 R.T.: 7.079 min
 Delta R.T.: 0.013 min
 Response: 797139
 Conc: 0.41 ng/ml



#21 Endrin ketone

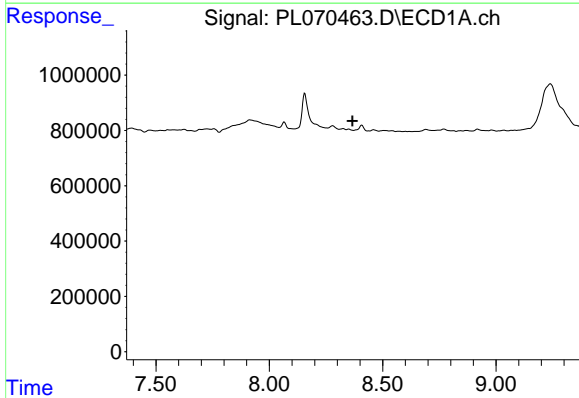
R.T.: 0.000 min
 Exp R.T. : 9.301 min
 Response: 0
 Conc: N.D.

Instrument :
 ECD_L
 ClientSampled :



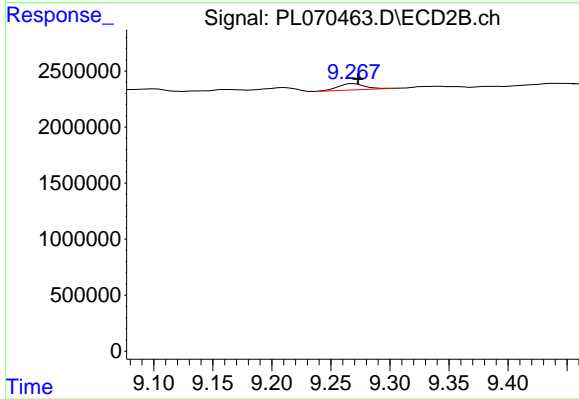
#21 Endrin ketone

R.T.: 10.045 min
 Delta R.T.: -0.027 min
 Response: 2950525
 Conc: 2.21 ng/ml



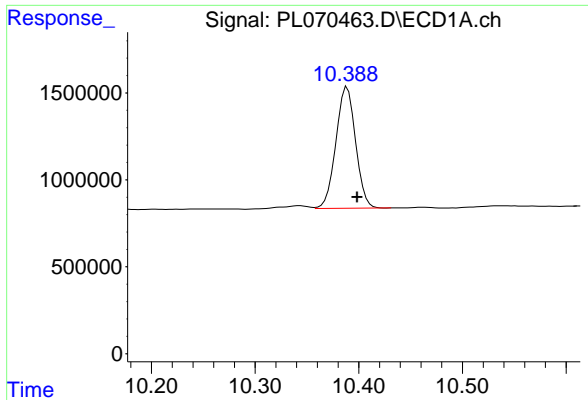
#27 Chlordane-5

R.T.: 0.000 min
 Exp R.T. : 8.367 min
 Response: 0
 Conc: N.D.



#27 Chlordane-5

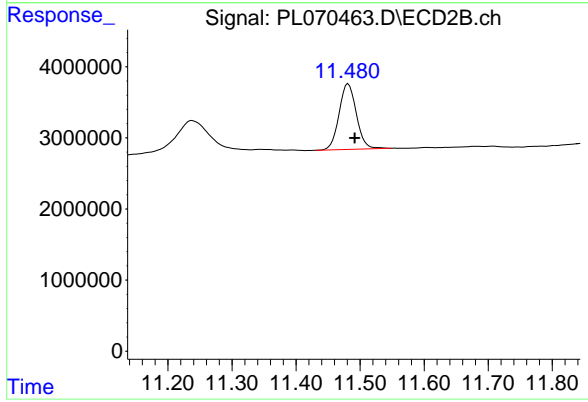
R.T.: 9.269 min
 Delta R.T.: -0.004 min
 Response: 866240
 Conc: 19.95 ng/ml



#28 Decachlorobiphenyl

R.T.: 10.389 min
Delta R.T.: -0.009 min
Response: 9228028
Conc: 13.34 ng/ml

Instrument :
ECD_L
ClientSampleId :



#28 Decachlorobiphenyl

R.T.: 11.481 min
Delta R.T.: -0.010 min
Response: 17342463
Conc: 14.33 ng/ml