

Data Path : Z:\pestpcbsrv\HPCHEM1\ECD_L\Data\PL102218\
 Data File : PL041218.D
 Signal(s) : Signal #1: ECD1A.ch Signal #2: ECD2B.ch
 Acq On : 22 Oct 2018 11:00
 Operator : AJ\SJ
 Sample : PSTDCCC050
 Misc :
 ALS Vial : 4 Sample Multiplier: 1

Instrument :
 ECD_L
 ClientSampleId :
 PSTDCCC050

Integration File signal 1: autoint1.e
 Integration File signal 2: autoint2.e
 Quant Time: Oct 23 01:09:44 2018
 Quant Method : Z:\pestpcbsrv\HPCHEM1\ECD_L\methods\PL101118.M
 Quant Title : GC Extractables
 QLast Update : Thu Oct 11 03:28:36 2018
 Response via : Initial Calibration
 Integrator: ChemStation

Volume Inj. : 2 µl
 Signal #1 Phase : ZB-MR1 Signal #2 Phase: ZB-MR2
 Signal #1 Info : 30M x 0.32mm x0.5 Signal #2 Info : 30M x 0.32mm x0.25µm

	Compound	RT#1	RT#2	Resp#1	Resp#2	ng/ml	ng/ml

System Monitoring Compounds							
1)	SA Tetrachlo...	3.482	4.103	286.6E6	137.8E6	52.293	49.408
28)	SA Decachlor...	8.229	9.236	270.0E6	112.5E6	51.934	43.504
Target Compounds							
2)	A alpha-BHC	3.924	4.498	436.1E6	195.5E6	55.041	50.518
3)	MA gamma-BHC...	4.208	4.787	404.0E6	182.1E6	55.331	51.151
4)	MA Heptachlor	4.505	5.303	405.4E6	178.5E6	55.015	52.727
5)	MB Aldrin	4.752	5.613	377.8E6	163.3E6	55.041	54.100
6)	B beta-BHC	4.460	4.955	165.5E6	77297230	52.155	48.229
7)	B delta-BHC	4.664	5.176	376.6E6	168.2E6	56.517	51.230
8)	B Heptachlo...	5.196	6.000	355.5E6	148.7E6	54.204	51.857
9)	A Endosulfan I	5.534	6.360	324.6E6	130.2E6	54.174	50.840
10)	B gamma-Chl...	5.422	6.235	356.3E6	145.3E6	54.177	51.794
11)	B alpha-Chl...	5.480	6.309	351.5E6	142.1E6	54.020	51.182
12)	B 4,4'-DDE	5.646	6.463	310.4E6	136.7E6	54.617	51.690
13)	MA Dieldrin	5.777	6.619	347.2E6	134.5E6	54.919	50.530
14)	MA Endrin	6.034	6.838	293.5E6	107.2E6	51.104	48.020
15)	B Endosulfa...	6.309	7.047	296.0E6	116.9E6	52.805	49.218
16)	A 4,4'-DDD	6.163	6.955	249.6E6	104.9E6	55.251	50.072
17)	MA 4,4'-DDT	6.401	7.255	255.1E6	105.3E6	56.011	50.600
18)	B Endrin al...	6.477	7.171	232.5E6	98459113	55.444	49.624
19)	B Endosulfa...	6.689	7.394	273.7E6	109.9E6	53.790	49.193
20)	A Methoxychlor	6.949	7.711	136.1E6	54969948	52.324	46.697
21)	B Endrin ke...	7.180	7.869	309.6E6	117.3E6	59.152	49.873

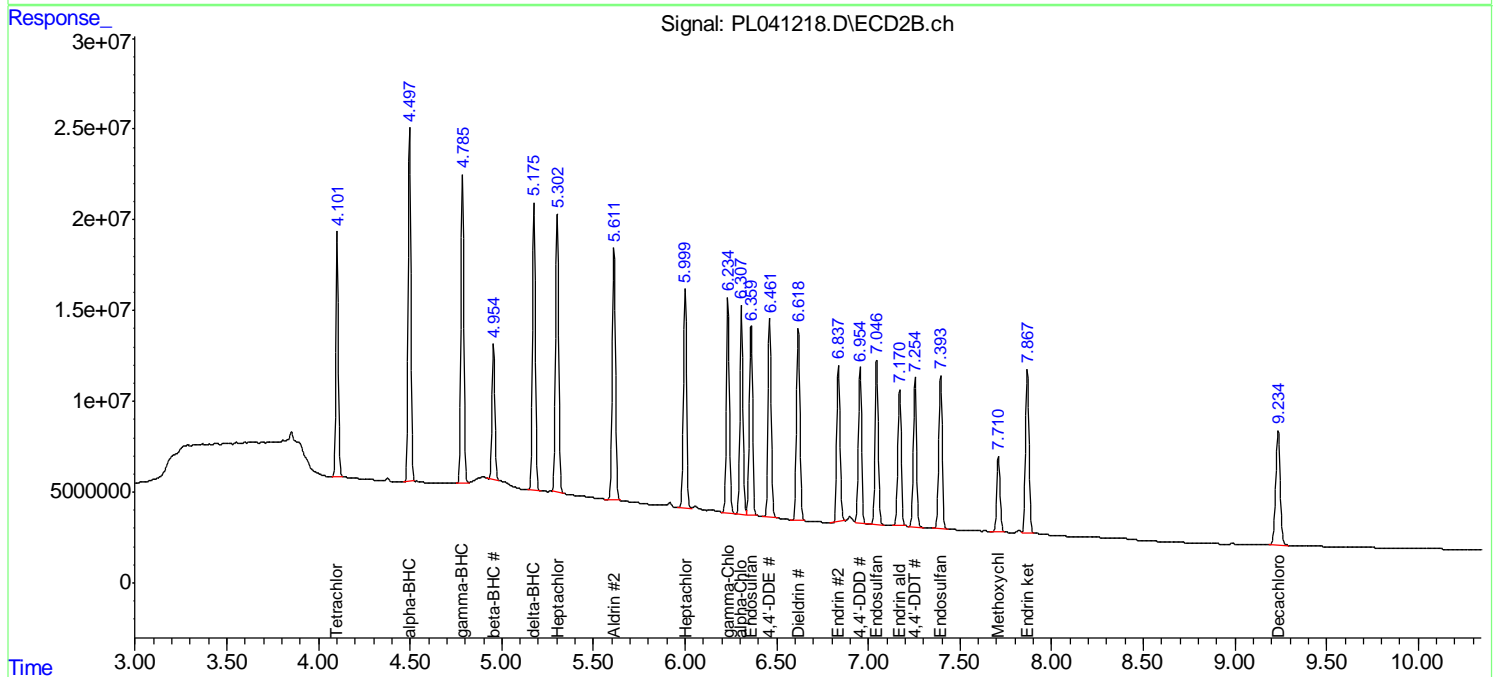
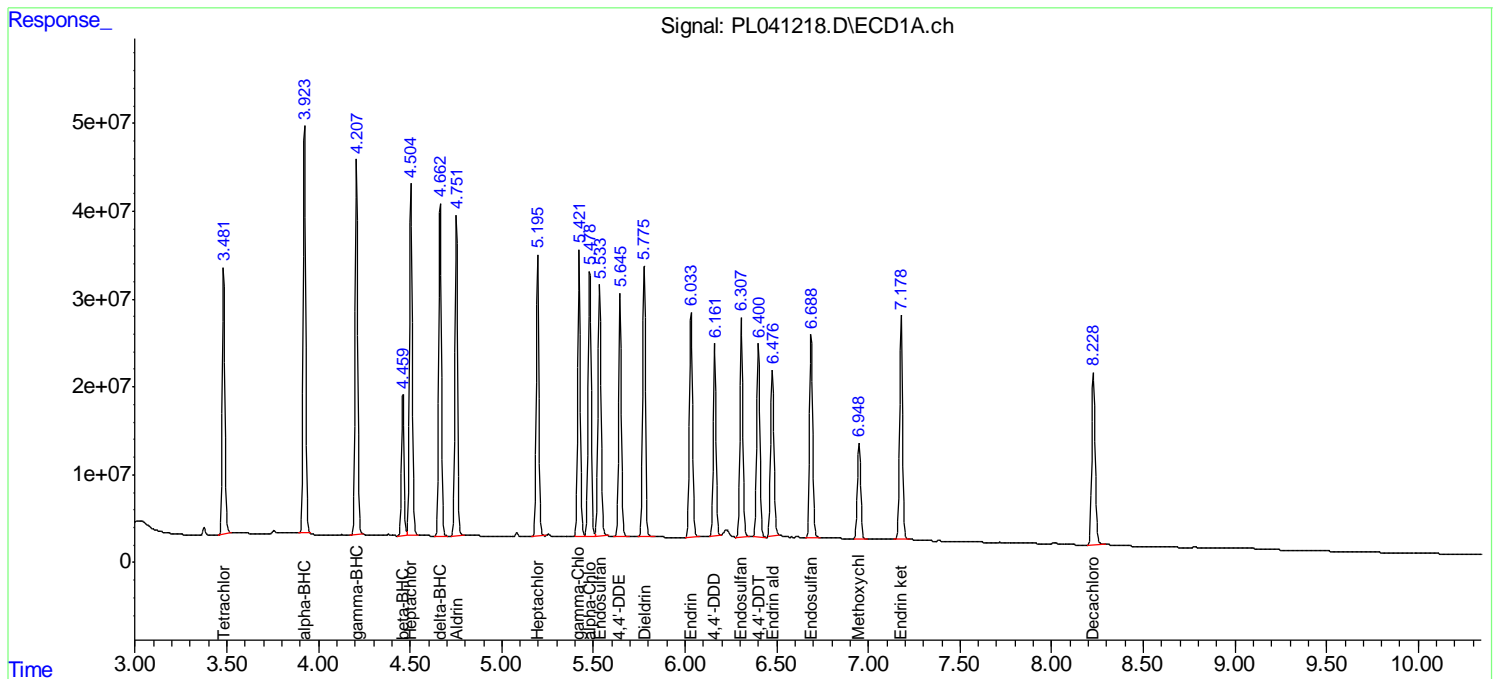
(f)=RT Delta > 1/2 Window (#)=Amounts differ by > 25% (m)=manual int.

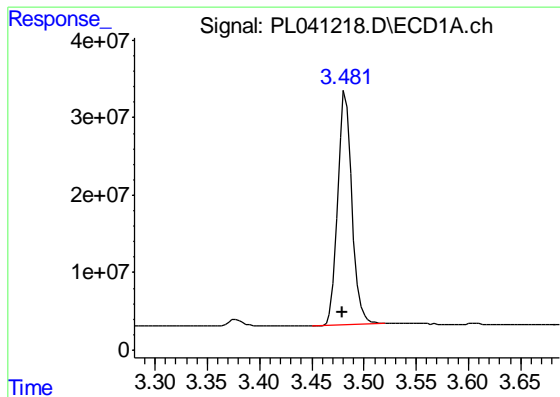
Data Path : Z:\pestpcbsrv\HPCHEM1\ECD_L\Data\PL102218\
 Data File : PL041218.D
 Signal(s) : Signal #1: ECD1A.ch Signal #2: ECD2B.ch
 Acq On : 22 Oct 2018 11:00
 Operator : AJ\SJ
 Sample : PSTDCCC050
 Misc :
 ALS Vial : 4 Sample Multiplier: 1

Instrument :
 ECD_L
 ClientSampleId :
 PSTDCCC050

Integration File signal 1: autoint1.e
 Integration File signal 2: autoint2.e
 Quant Time: Oct 23 01:09:44 2018
 Quant Method : Z:\pestpcbsrv\HPCHEM1\ECD_L\methods\PL101118.M
 Quant Title : GC Extractables
 QLast Update : Thu Oct 11 03:28:36 2018
 Response via : Initial Calibration
 Integrator: ChemStation

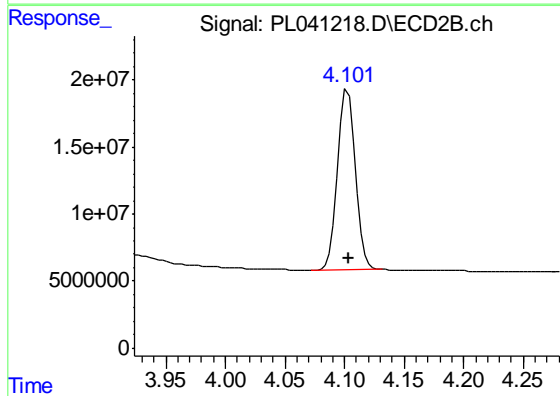
Volume Inj. : 2 µl
 Signal #1 Phase : ZB-MR1 Signal #2 Phase: ZB-MR2
 Signal #1 Info : 30M x 0.32mm x0.5 Signal #2 Info : 30M x 0.32mm x0.25µm



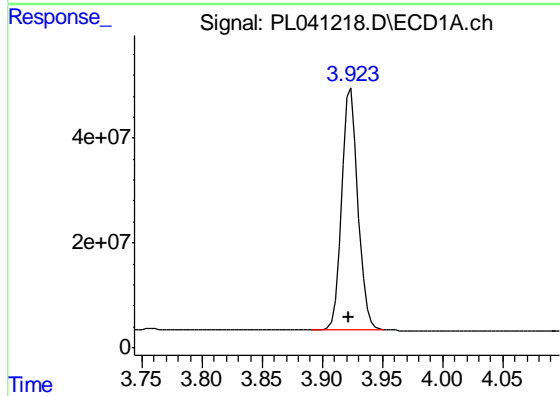


#1 Tetrachloro-m-xylene
 R.T.: 3.482 min
 Delta R.T.: 0.002 min
 Response: 286603712
 Conc: 52.29 ng/ml

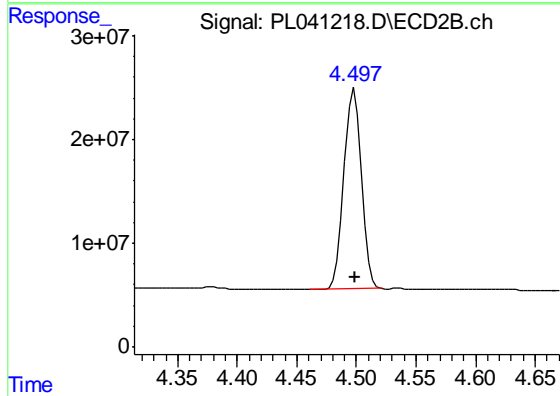
Instrument :
 ECD_L
 ClientSampleId :
 PSTDCCC050



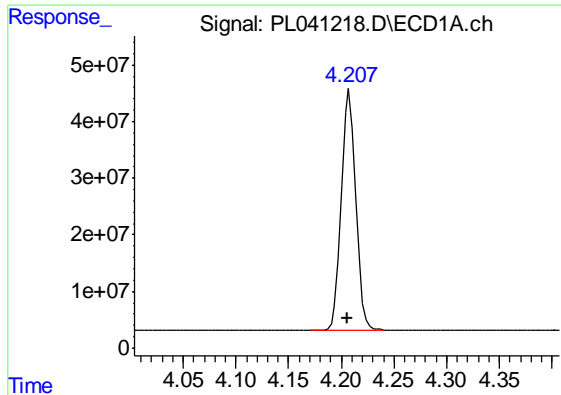
#1 Tetrachloro-m-xylene
 R.T.: 4.103 min
 Delta R.T.: 0.000 min
 Response: 137763404
 Conc: 49.41 ng/ml



#2 alpha-BHC
 R.T.: 3.924 min
 Delta R.T.: 0.001 min
 Response: 436122842
 Conc: 55.04 ng/ml



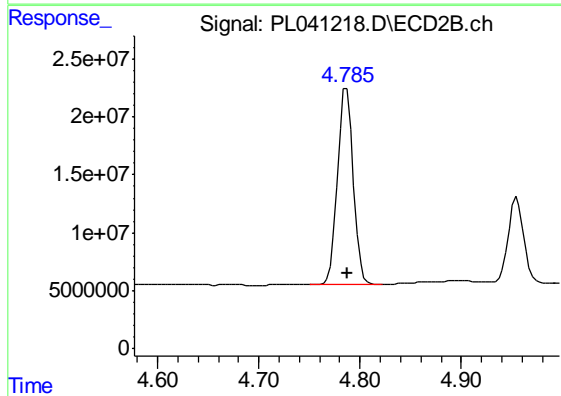
#2 alpha-BHC
 R.T.: 4.498 min
 Delta R.T.: -0.001 min
 Response: 195469822
 Conc: 50.52 ng/ml



#3 gamma-BHC (Lindane)

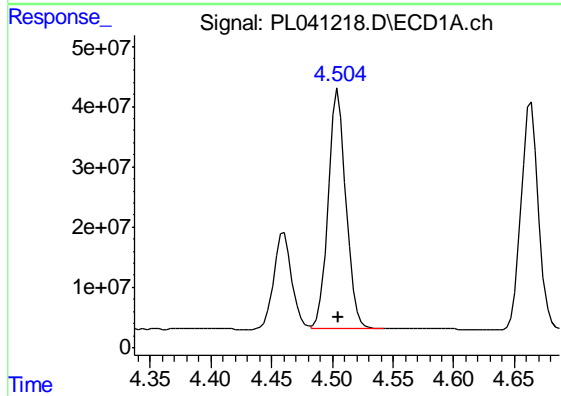
R.T.: 4.208 min
 Delta R.T.: 0.002 min
 Response: 404021929
 Conc: 55.33 ng/ml

Instrument :
 ECD_L
 ClientSampleId :
 PSTDCCC050



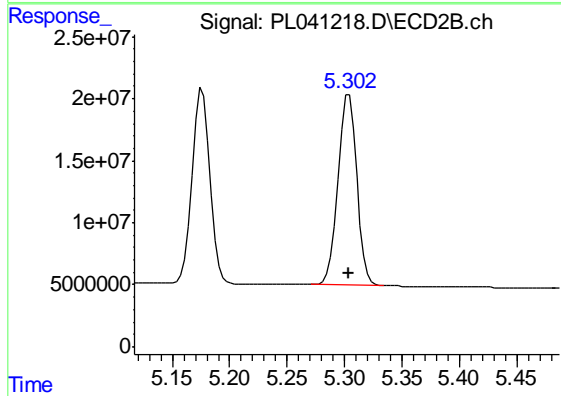
#3 gamma-BHC (Lindane)

R.T.: 4.787 min
 Delta R.T.: -0.001 min
 Response: 182137730
 Conc: 51.15 ng/ml



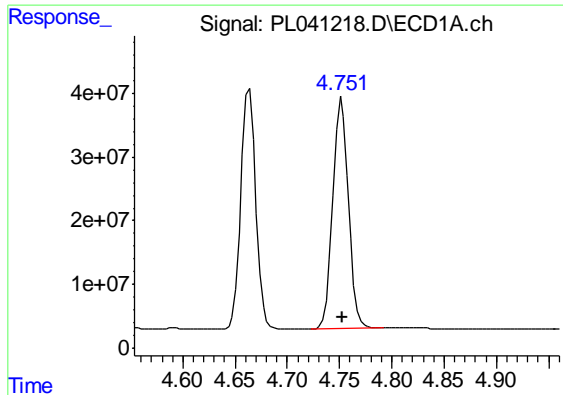
#4 Heptachlor

R.T.: 4.505 min
 Delta R.T.: 0.000 min
 Response: 405407386
 Conc: 55.02 ng/ml



#4 Heptachlor

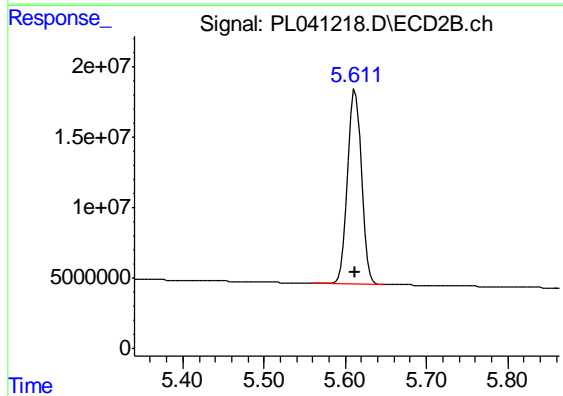
R.T.: 5.303 min
 Delta R.T.: 0.000 min
 Response: 178461808
 Conc: 52.73 ng/ml



#5 Aldrin

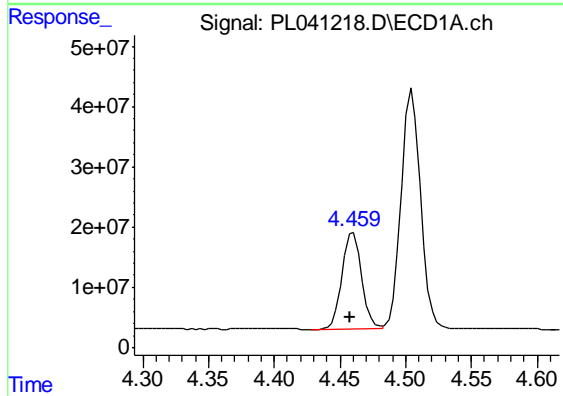
R.T.: 4.752 min
 Delta R.T.: 0.000 min
 Response: 377819483
 Conc: 55.04 ng/ml

Instrument :
 ECD_L
 ClientSampleId :
 PSTDCCC050



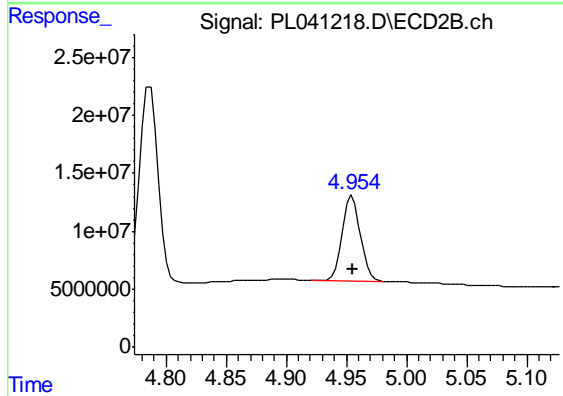
#5 Aldrin

R.T.: 5.613 min
 Delta R.T.: 0.000 min
 Response: 163280633
 Conc: 54.10 ng/ml



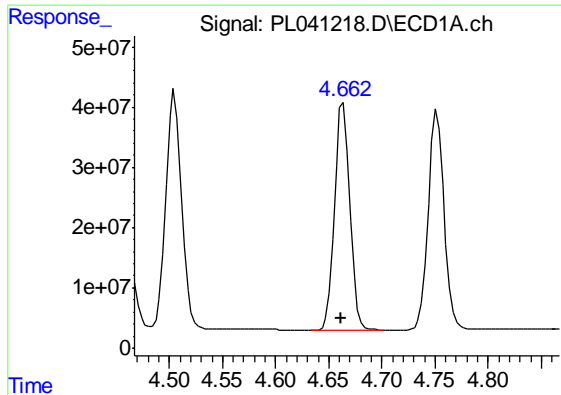
#6 beta-BHC

R.T.: 4.460 min
 Delta R.T.: 0.003 min
 Response: 165488861
 Conc: 52.16 ng/ml



#6 beta-BHC

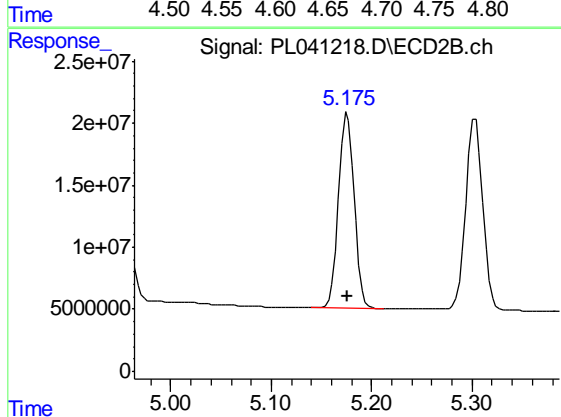
R.T.: 4.955 min
 Delta R.T.: 0.000 min
 Response: 77297230
 Conc: 48.23 ng/ml



#7 delta-BHC

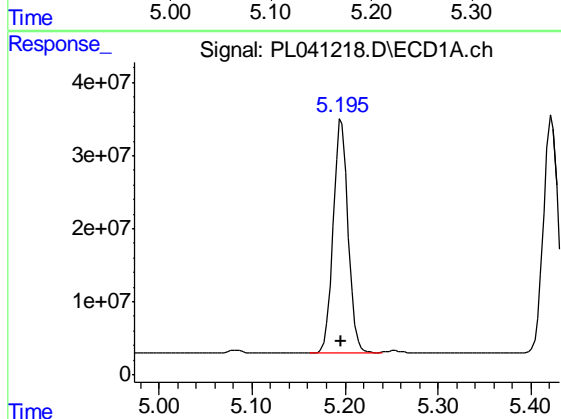
R.T.: 4.664 min
 Delta R.T.: 0.002 min
 Response: 376620153
 Conc: 56.52 ng/ml

Instrument :
 ECD_L
 ClientSampleId :
 PSTDCCC050



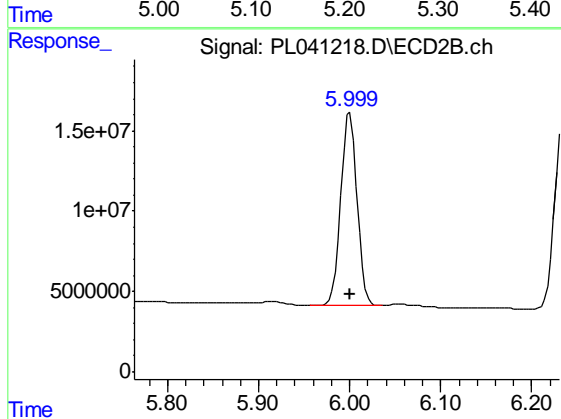
#7 delta-BHC

R.T.: 5.176 min
 Delta R.T.: 0.000 min
 Response: 168161416
 Conc: 51.23 ng/ml



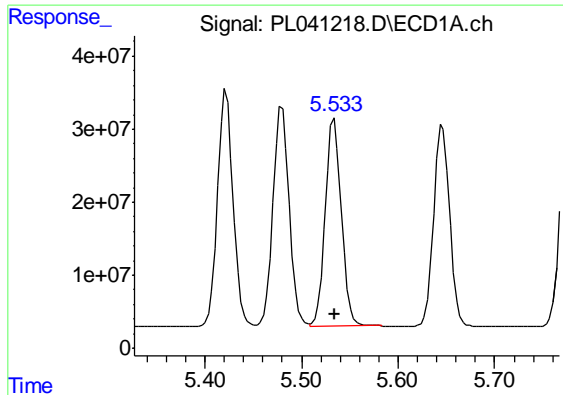
#8 Heptachlor epoxide

R.T.: 5.196 min
 Delta R.T.: 0.000 min
 Response: 355508764
 Conc: 54.20 ng/ml



#8 Heptachlor epoxide

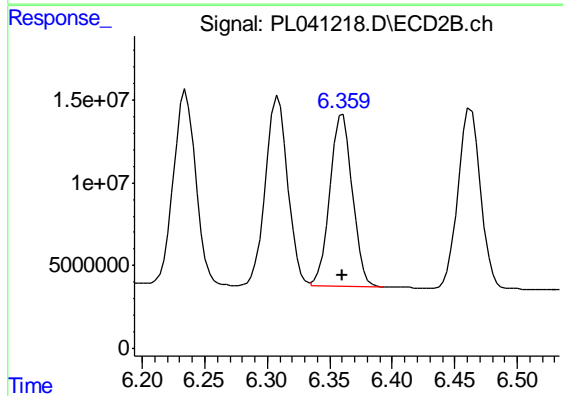
R.T.: 6.000 min
 Delta R.T.: 0.000 min
 Response: 148734400
 Conc: 51.86 ng/ml



#9 Endosulfan I

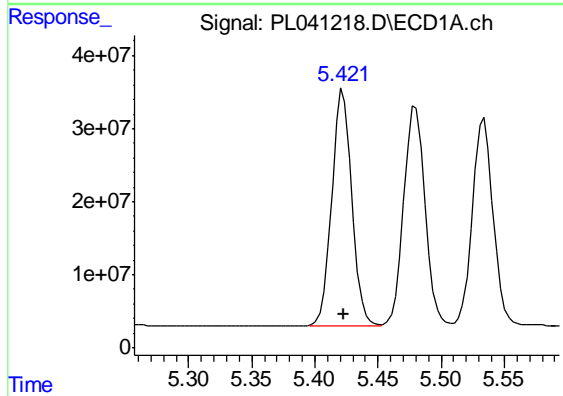
R.T.: 5.534 min
Delta R.T.: 0.000 min
Response: 324553418
Conc: 54.17 ng/ml

Instrument :
ECD_L
ClientSampleId :
PSTDCCC050



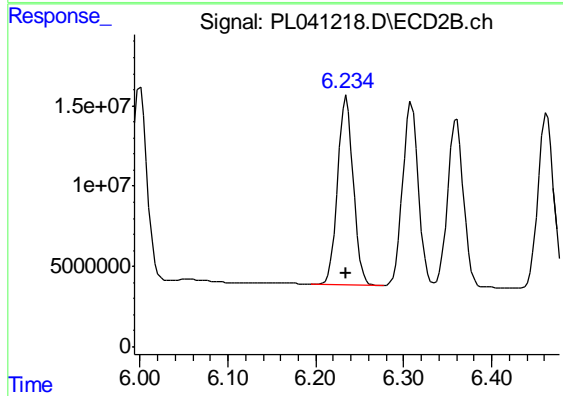
#9 Endosulfan I

R.T.: 6.360 min
Delta R.T.: 0.000 min
Response: 130213078
Conc: 50.84 ng/ml



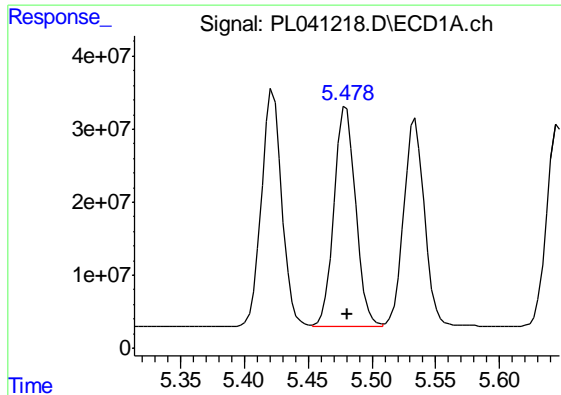
#10 gamma-Chlordane

R.T.: 5.422 min
Delta R.T.: 0.000 min
Response: 356284070
Conc: 54.18 ng/ml



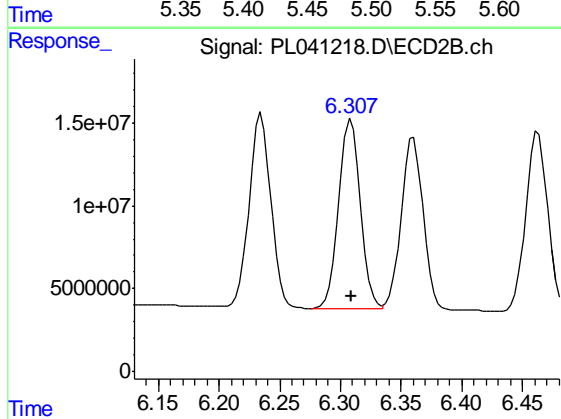
#10 gamma-Chlordane

R.T.: 6.235 min
Delta R.T.: 0.000 min
Response: 145264967
Conc: 51.79 ng/ml

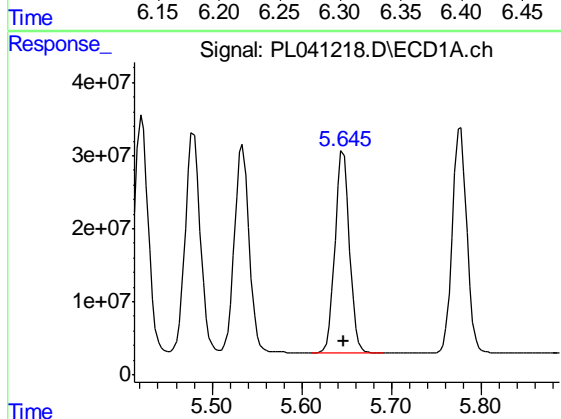


#11 alpha-Chlordane
 R.T.: 5.480 min
 Delta R.T.: 0.000 min
 Response: 351452708
 Conc: 54.02 ng/ml

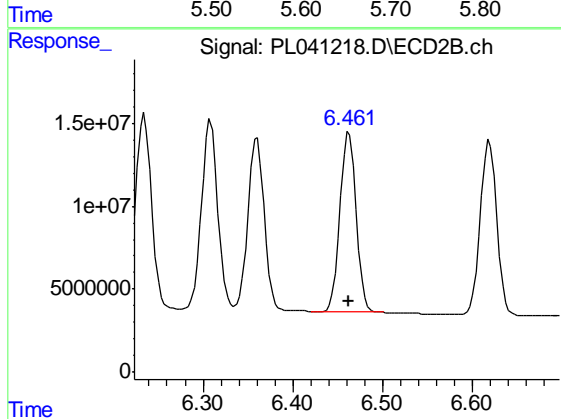
Instrument :
 ECD_L
 ClientSampleId :
 PSTDCCC050



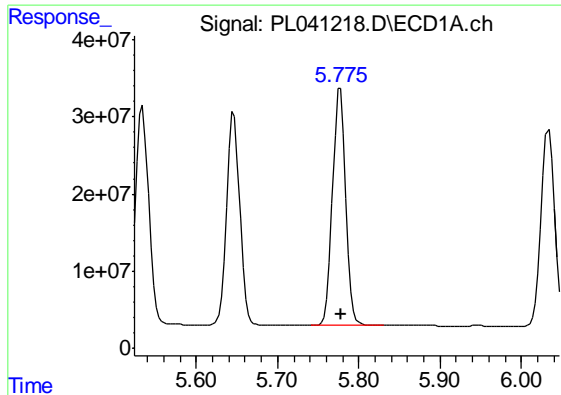
#11 alpha-Chlordane
 R.T.: 6.309 min
 Delta R.T.: 0.000 min
 Response: 142061222
 Conc: 51.18 ng/ml



#12 4,4'-DDE
 R.T.: 5.646 min
 Delta R.T.: 0.000 min
 Response: 310436094
 Conc: 54.62 ng/ml



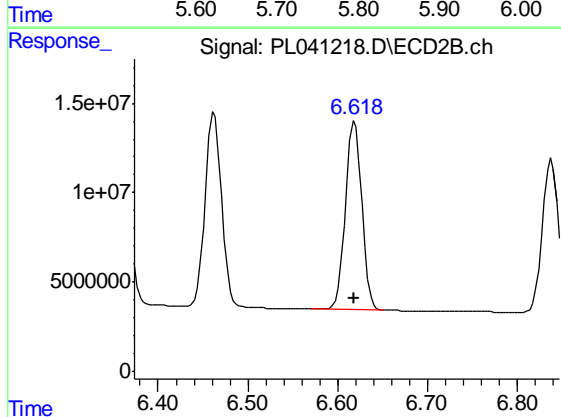
#12 4,4'-DDE
 R.T.: 6.463 min
 Delta R.T.: 0.001 min
 Response: 136736383
 Conc: 51.69 ng/ml



#13 Dieldrin

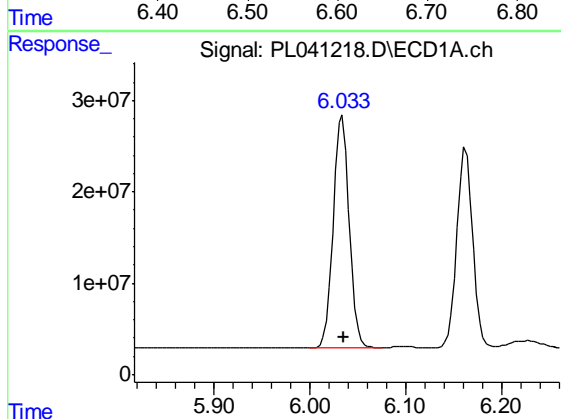
R.T.: 5.777 min
 Delta R.T.: -0.001 min
 Response: 347221187
 Conc: 54.92 ng/ml

Instrument :
 ECD_L
 ClientSampleId :
 PSTDCCC050



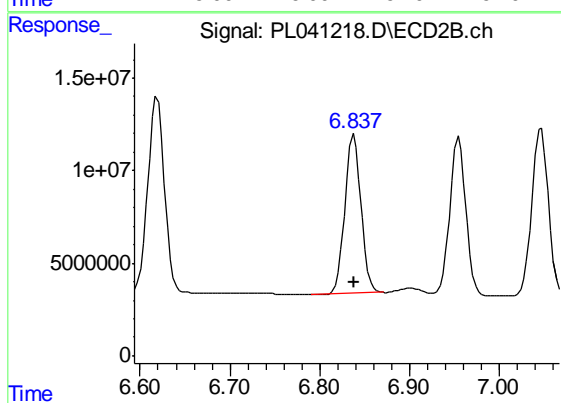
#13 Dieldrin

R.T.: 6.619 min
 Delta R.T.: 0.000 min
 Response: 134530749
 Conc: 50.53 ng/ml



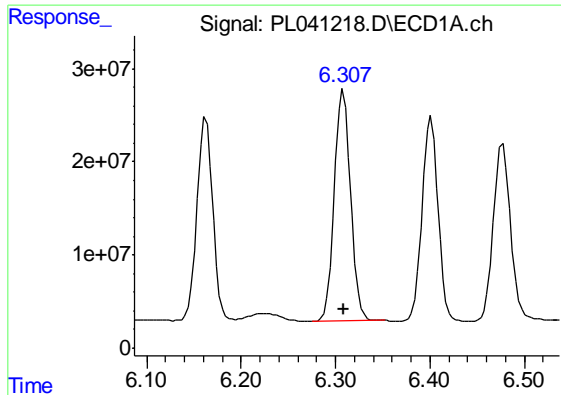
#14 Endrin

R.T.: 6.034 min
 Delta R.T.: 0.000 min
 Response: 293545052
 Conc: 51.10 ng/ml



#14 Endrin

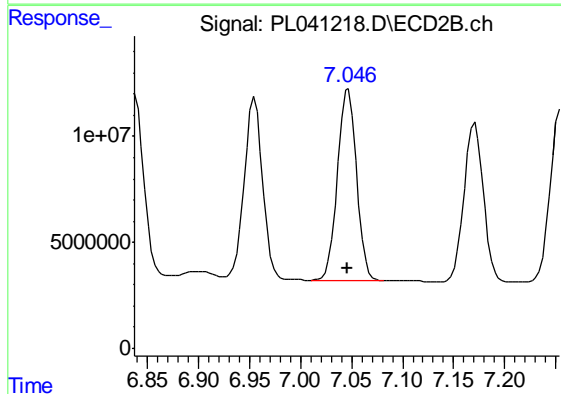
R.T.: 6.838 min
 Delta R.T.: 0.000 min
 Response: 107187280
 Conc: 48.02 ng/ml



#15 Endosulfan II

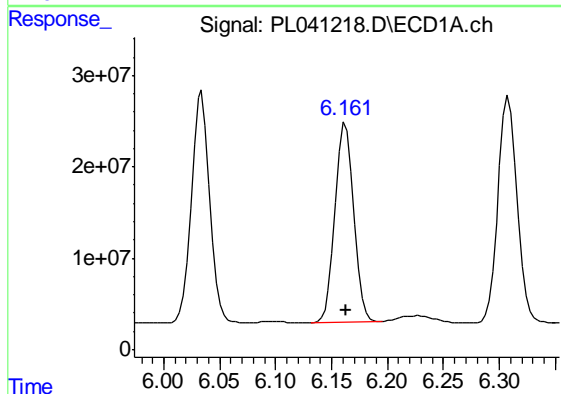
R.T.: 6.309 min
Delta R.T.: 0.000 min
Response: 295971428
Conc: 52.81 ng/ml

Instrument :
ECD_L
ClientSampleId :
PSTDCCC050



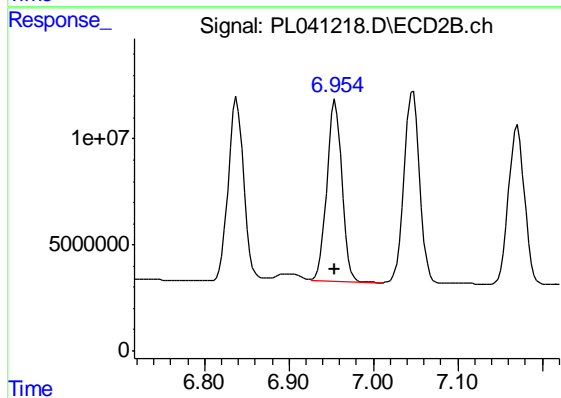
#15 Endosulfan II

R.T.: 7.047 min
Delta R.T.: 0.001 min
Response: 116894546
Conc: 49.22 ng/ml



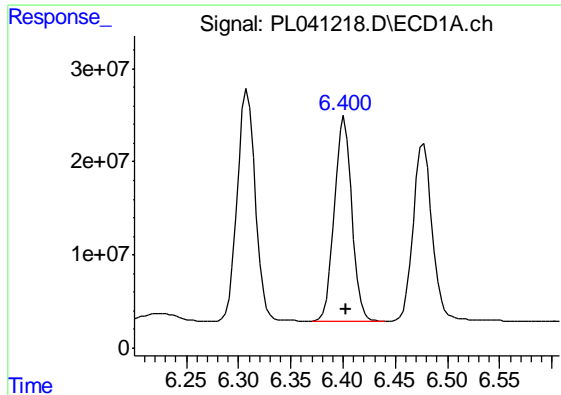
#16 4,4'-DDD

R.T.: 6.163 min
Delta R.T.: 0.000 min
Response: 249561828
Conc: 55.25 ng/ml



#16 4,4'-DDD

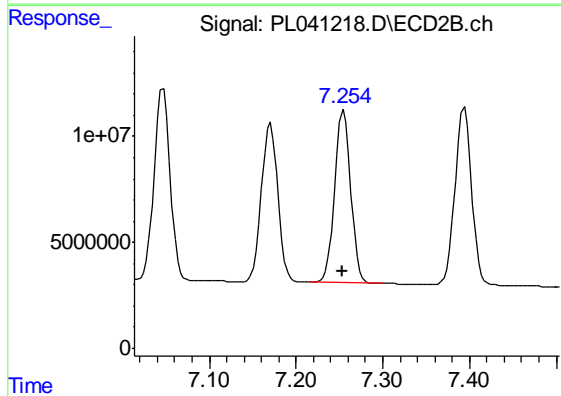
R.T.: 6.955 min
Delta R.T.: 0.001 min
Response: 104886972
Conc: 50.07 ng/ml



#17 4,4'-DDT

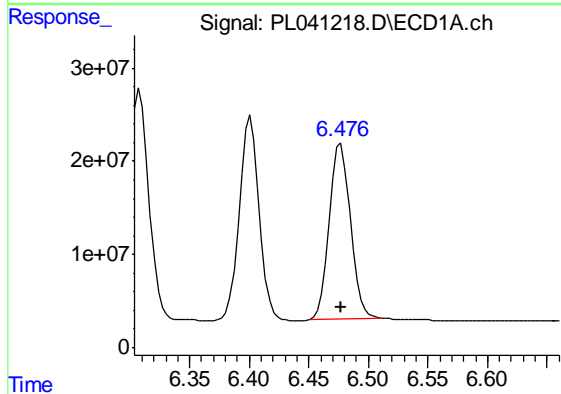
R.T.: 6.401 min
 Delta R.T.: -0.002 min
 Response: 255110509
 Conc: 56.01 ng/ml

Instrument :
 ECD_L
 ClientSampleId :
 PSTDCCC050



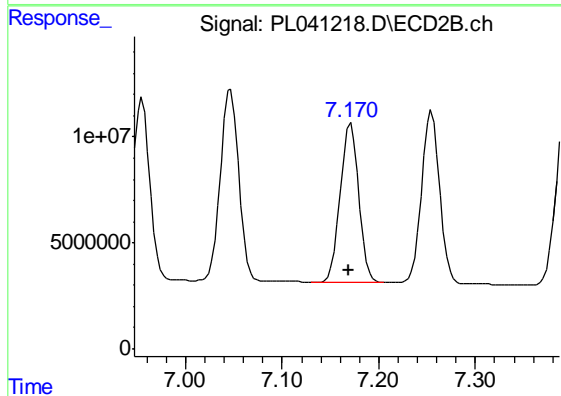
#17 4,4'-DDT

R.T.: 7.255 min
 Delta R.T.: 0.001 min
 Response: 105253219
 Conc: 50.60 ng/ml



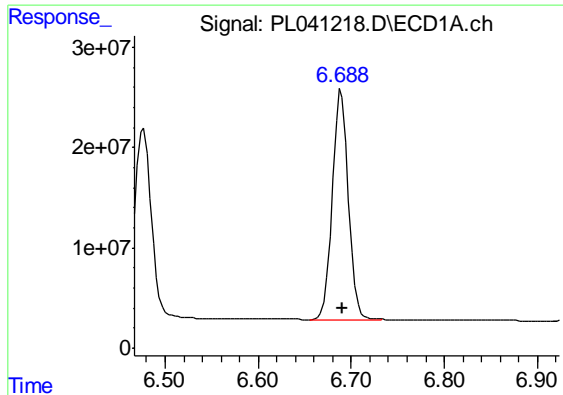
#18 Endrin aldehyde

R.T.: 6.477 min
 Delta R.T.: 0.000 min
 Response: 232467151
 Conc: 55.44 ng/ml



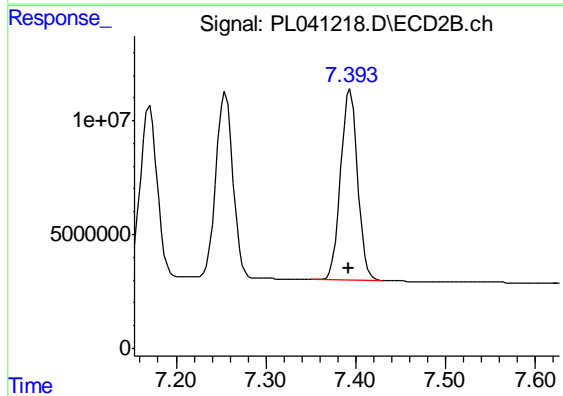
#18 Endrin aldehyde

R.T.: 7.171 min
 Delta R.T.: 0.002 min
 Response: 98459113
 Conc: 49.62 ng/ml

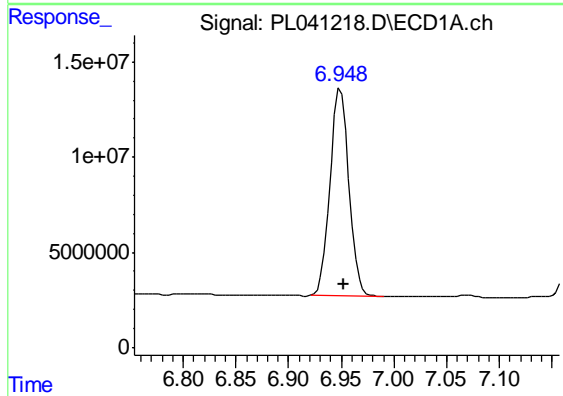


#19 Endosulfan Sulfate
 R.T.: 6.689 min
 Delta R.T.: -0.001 min
 Response: 273674789
 Conc: 53.79 ng/ml

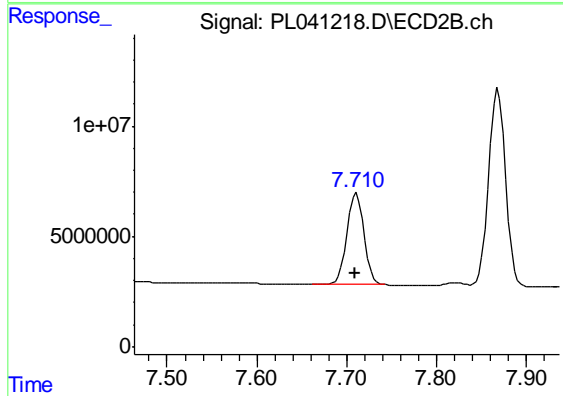
Instrument :
 ECD_L
 ClientSampleId :
 PSTDCCC050



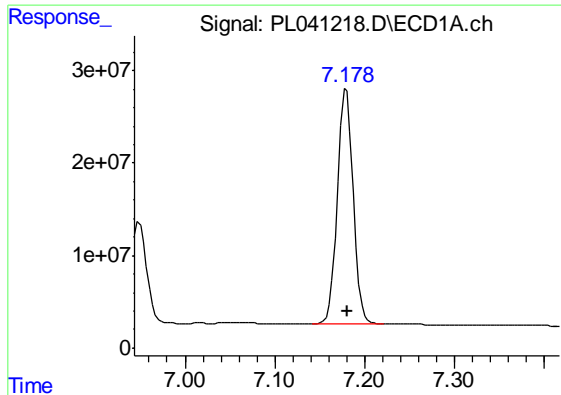
#19 Endosulfan Sulfate
 R.T.: 7.394 min
 Delta R.T.: 0.002 min
 Response: 109917220
 Conc: 49.19 ng/ml



#20 Methoxychlor
 R.T.: 6.949 min
 Delta R.T.: -0.003 min
 Response: 136106126
 Conc: 52.32 ng/ml



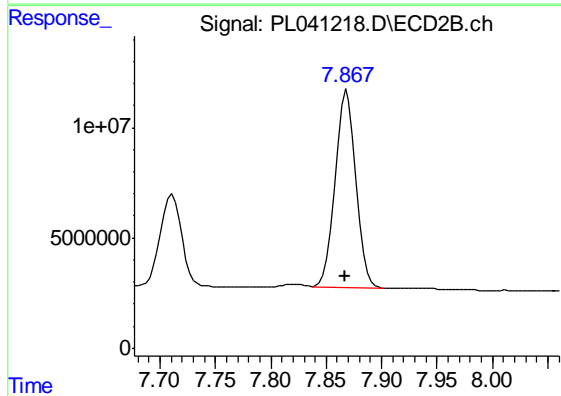
#20 Methoxychlor
 R.T.: 7.711 min
 Delta R.T.: 0.002 min
 Response: 54969948
 Conc: 46.70 ng/ml



#21 Endrin ketone

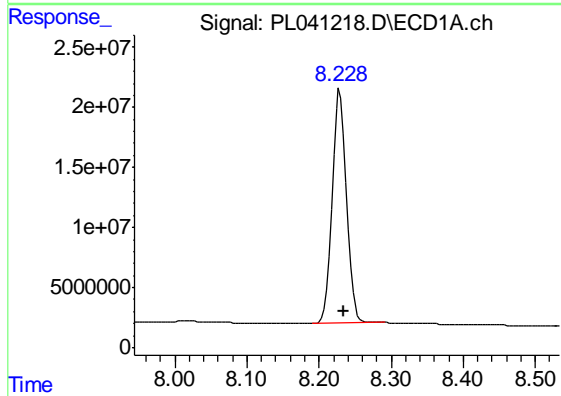
R.T.: 7.180 min
Delta R.T.: -0.001 min
Response: 309645121
Conc: 59.15 ng/ml

Instrument :
ECD_L
ClientSampleId :
PSTDCCC050



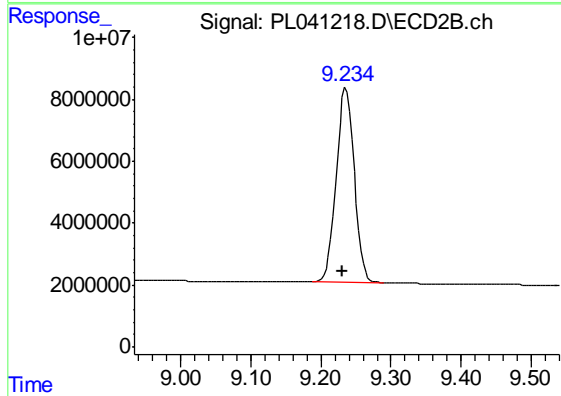
#21 Endrin ketone

R.T.: 7.869 min
Delta R.T.: 0.002 min
Response: 117279524
Conc: 49.87 ng/ml



#28 Decachlorobiphenyl

R.T.: 8.229 min
Delta R.T.: -0.005 min
Response: 270032579
Conc: 51.93 ng/ml



#28 Decachlorobiphenyl

R.T.: 9.236 min
Delta R.T.: 0.004 min
Response: 112494145
Conc: 43.50 ng/ml