

Data Path : Z:\pestpcbsrv\HPCHEM1\ECD_L\Data\PL102218\
 Data File : PL041223.D
 Signal(s) : Signal #1: ECD1A.ch Signal #2: ECD2B.ch
 Acq On : 22 Oct 2018 13:26
 Operator : AJ\SJ
 Sample : I.BLK
 Misc :
 ALS Vial : 2 Sample Multiplier: 1

Instrument :
 ECD_L
 ClientSampleId :
 I.BLK

Integration File signal 1: autoint1.e
 Integration File signal 2: autoint2.e
 Quant Time: Oct 23 01:10:31 2018
 Quant Method : Z:\pestpcbsrv\HPCHEM1\ECD_L\methods\PL101118.M
 Quant Title : GC Extractables
 QLast Update : Thu Oct 11 03:28:36 2018
 Response via : Initial Calibration
 Integrator: ChemStation

Volume Inj. : 2 µl
 Signal #1 Phase : ZB-MR1 Signal #2 Phase: ZB-MR2
 Signal #1 Info : 30M x 0.32mm x0.5 Signal #2 Info : 30M x 0.32mm x0.25µm

Compound	RT#1	RT#2	Resp#1	Resp#2	ng/ml	ng/ml

System Monitoring Compounds						
1) SA Tetrachlo...	3.475	4.102	134.8E6	69549018	24.599	24.943
28) SA Decachlor...	8.221	9.232	131.6E6	56014662	25.302	21.662

Target Compounds

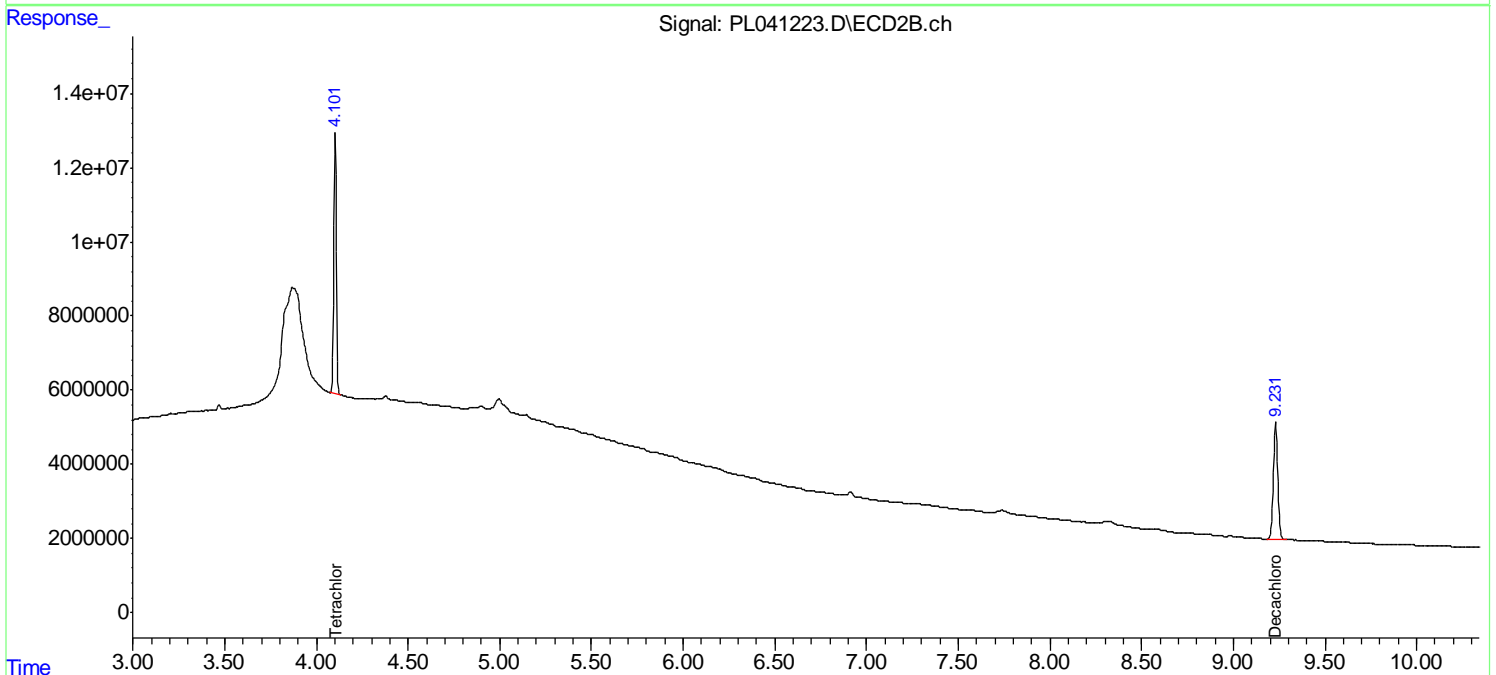
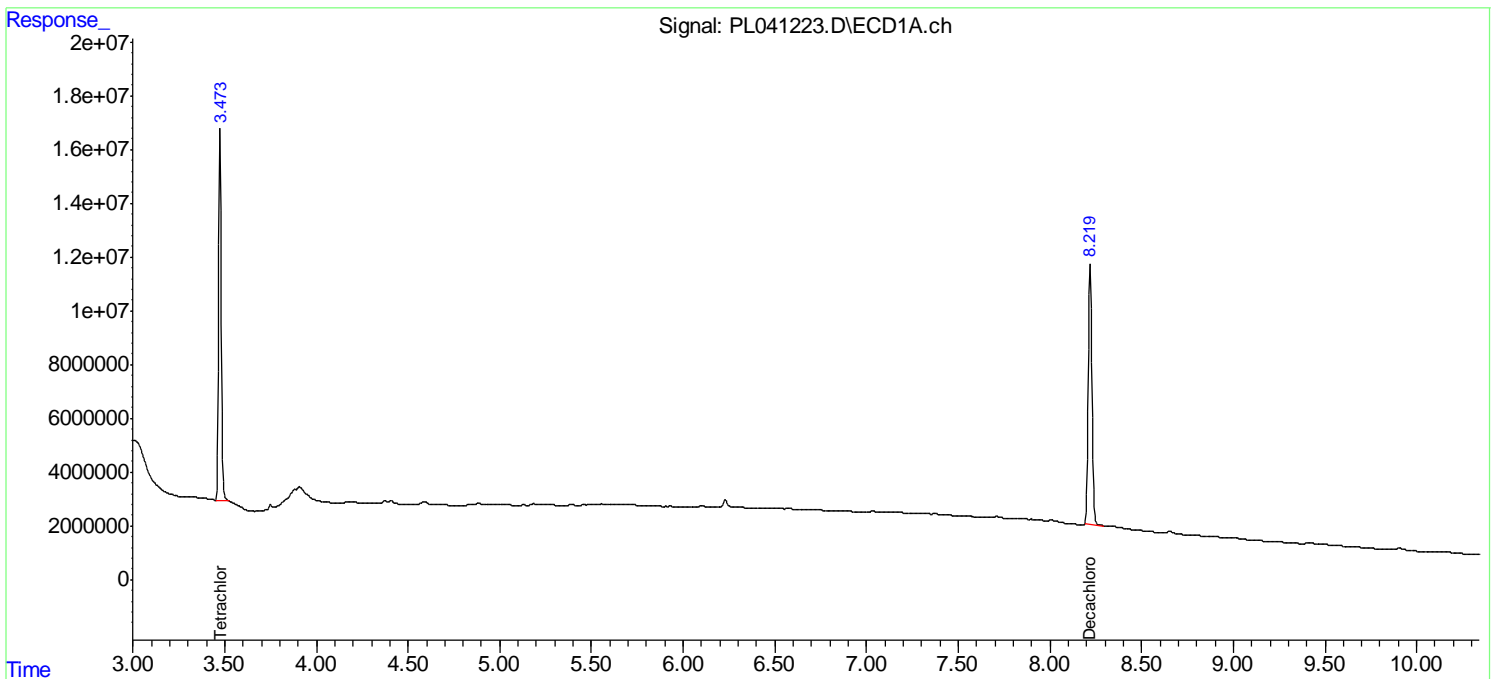
(f)=RT Delta > 1/2 Window (#)=Amounts differ by > 25% (m)=manual int.

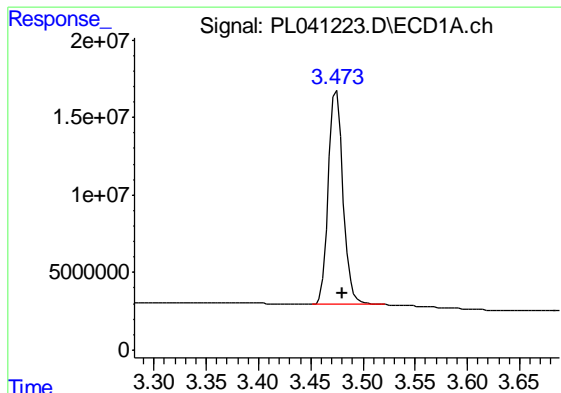
Data Path : Z:\pestpcbsrv\HPCHEM1\ECD_L\Data\PL102218\
 Data File : PL041223.D
 Signal(s) : Signal #1: ECD1A.ch Signal #2: ECD2B.ch
 Acq On : 22 Oct 2018 13:26
 Operator : AJ\SJ
 Sample : I.BLK
 Misc :
 ALS Vial : 2 Sample Multiplier: 1

Instrument :
 ECD_L
 ClientSampled :
 I.BLK

Integration File signal 1: autoint1.e
 Integration File signal 2: autoint2.e
 Quant Time: Oct 23 01:10:31 2018
 Quant Method : Z:\pestpcbsrv\HPCHEM1\ECD_L\methods\PL101118.M
 Quant Title : GC Extractables
 QLast Update : Thu Oct 11 03:28:36 2018
 Response via : Initial Calibration
 Integrator: ChemStation

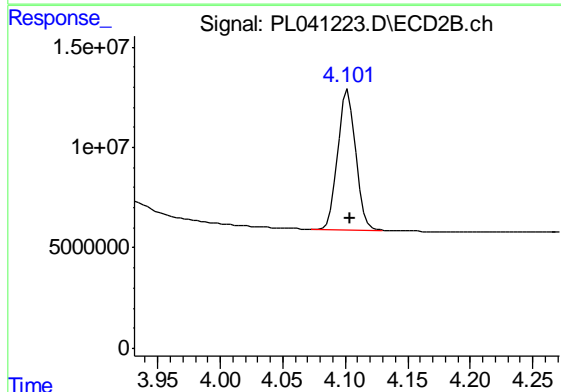
Volume Inj. : 2 µl
 Signal #1 Phase : ZB-MR1 Signal #2 Phase: ZB-MR2
 Signal #1 Info : 30M x 0.32mm x0.5 Signal #2 Info : 30M x 0.32mm x0.25µm



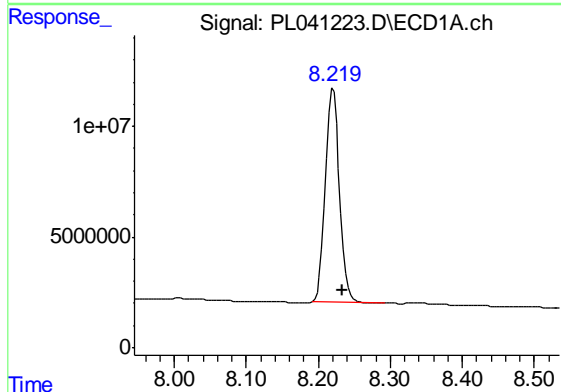


#1 Tetrachloro-m-xylene
 R.T.: 3.475 min
 Delta R.T.: -0.005 min
 Response: 134822309
 Conc: 24.60 ng/ml

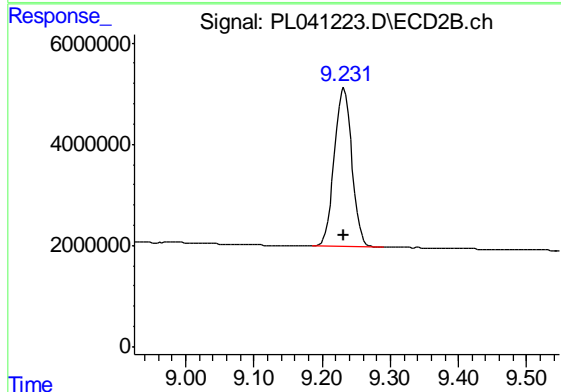
Instrument :
 ECD_L
 ClientSampleId :
 I.BLK



#1 Tetrachloro-m-xylene
 R.T.: 4.102 min
 Delta R.T.: -0.002 min
 Response: 69549018
 Conc: 24.94 ng/ml



#28 Decachlorobiphenyl
 R.T.: 8.221 min
 Delta R.T.: -0.014 min
 Response: 131561004
 Conc: 25.30 ng/ml



#28 Decachlorobiphenyl
 R.T.: 9.232 min
 Delta R.T.: 0.000 min
 Response: 56014662
 Conc: 21.66 ng/ml