

Data Path : Z:\pestpcbsrv\HPCHEM1\ECD_L\Data\PL102220\
 Data File : PL062530.D
 Signal(s) : Signal #1: ECD1A.ch Signal #2: ECD2B.ch
 Acq On : 22 Oct 2020 18:28
 Operator : DD\AJ
 Sample : L4467-02
 Misc :
 ALS Vial : 22 Sample Multiplier: 1

Instrument :
 ECD_L
 ClientSampleId :

Integration File signal 1: autoint1.e
 Integration File signal 2: autoint2.e
 Quant Time: Oct 23 04:50:43 2020
 Quant Method : Z:\pestpcbsrv\HPCHEM1\ECD_L\methods\PL102120.M
 Quant Title : GC Extractables
 QLast Update : Thu Oct 22 04:25:31 2020
 Response via : Initial Calibration
 Integrator: ChemStation

Volume Inj. : 1 µl
 Signal #1 Phase : ZB-MR2 Signal #2 Phase: ZB-MR1
 Signal #1 Info : 30M x 0.32mm x0.2 Signal #2 Info : 30M x 0.32mm x0.5µm

	Compound	RT#1	RT#2	Resp#1	Resp#2	ng/ml	ng/ml

System Monitoring Compounds							
1)	SA Tetrachlo...	3.413	3.952	30834242	52415372	17.926	17.836
28)	SA Decachlor...	8.127	8.989	27724252	38611011	17.281	18.448
Target Compounds							
7)	B delta-BHC	0.000	4.982f	0	3372596	N.D.	0.964 #
9)	A Endosulfan I	5.442	0.000	2381969	0	1.425	N.D. #
10)	B gamma-Chl...	0.000	6.034	0	3053526	N.D.	0.907 #
15)	B Endosulfa...	0.000	6.838	0	2061662	N.D.	0.721 #
16)	A 4,4'-DDD	6.060	0.000	275956	0	0.195	N.D. #
23)	Chlordane-1	4.273	0.000	574423	0	11.143	N.D. #
25)	Chlordane-3	0.000	6.034	0	3053526	N.D.	7.559 #

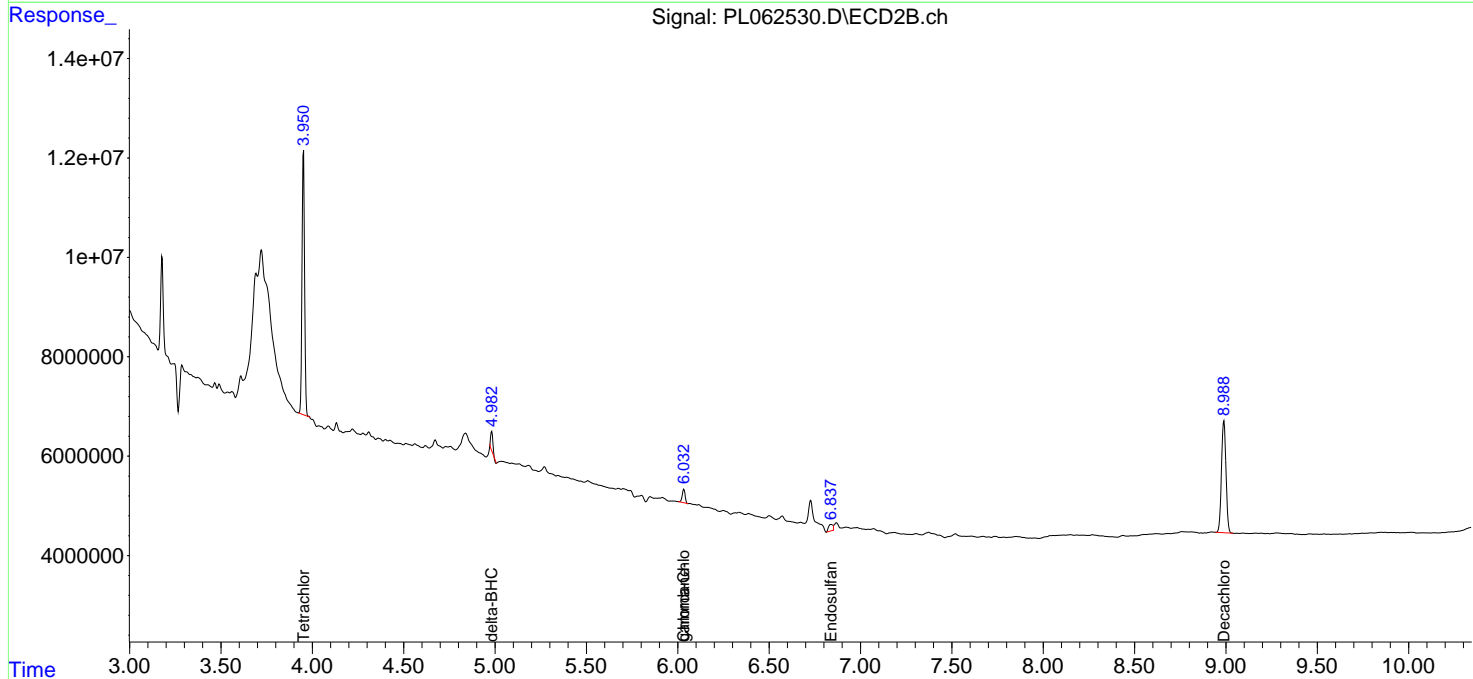
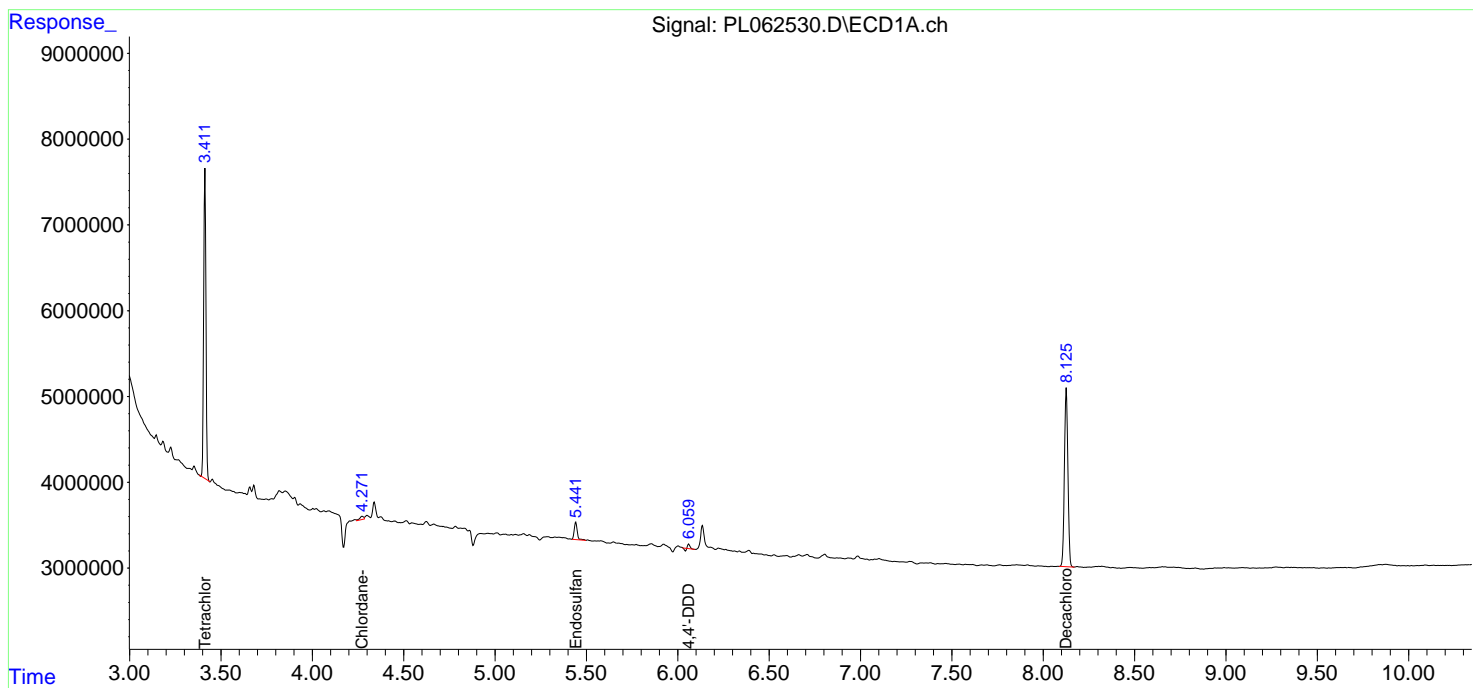
(f)=RT Delta > 1/2 Window (#)=Amounts differ by > 25% (m)=manual int.

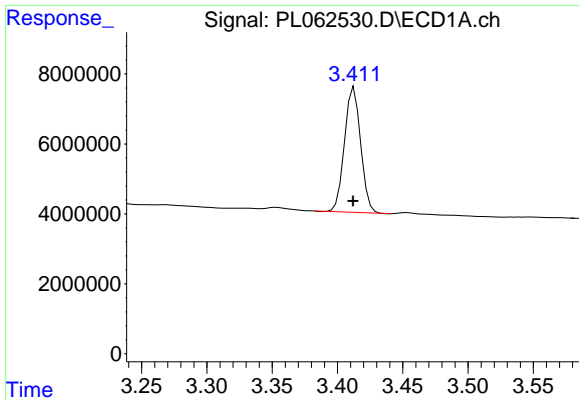
Data Path : Z:\pestpcbsrv\HPCHEM1\ECD_L\Data\PL102220\
 Data File : PL062530.D
 Signal(s) : Signal #1: ECD1A.ch Signal #2: ECD2B.ch
 Acq On : 22 Oct 2020 18:28
 Operator : DD\AJ
 Sample : L4467-02
 Misc :
 ALS Vial : 22 Sample Multiplier: 1

Instrument :
 ECD_L
 ClientSampled :

Integration File signal 1: autoint1.e
 Integration File signal 2: autoint2.e
 Quant Time: Oct 23 04:50:43 2020
 Quant Method : Z:\pestpcbsrv\HPCHEM1\ECD_L\methods\PL102120.M
 Quant Title : GC Extractables
 QLast Update : Thu Oct 22 04:25:31 2020
 Response via : Initial Calibration
 Integrator: ChemStation

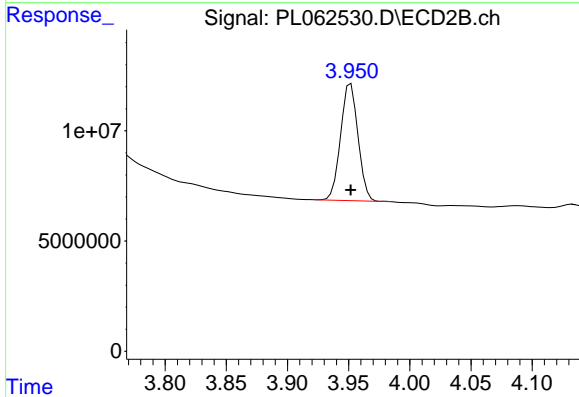
Volume Inj. : 1 µl
 Signal #1 Phase : ZB-MR2 Signal #2 Phase: ZB-MR1
 Signal #1 Info : 30M x 0.32mm x0.2 Signal #2 Info : 30M x 0.32mm x0.5µm



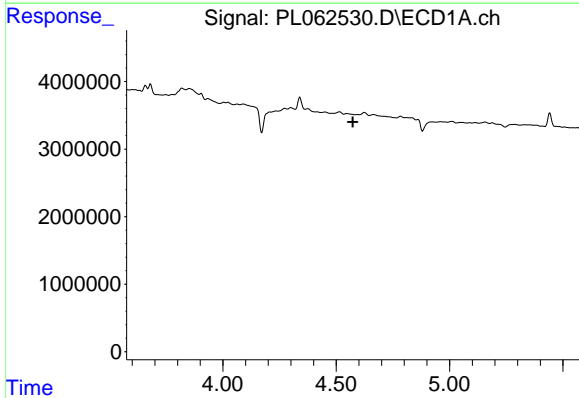


#1 Tetrachloro-m-xylene
 R.T.: 3.413 min
 Delta R.T.: 0.000 min
 Response: 30834242
 Conc: 17.93 ng/ml

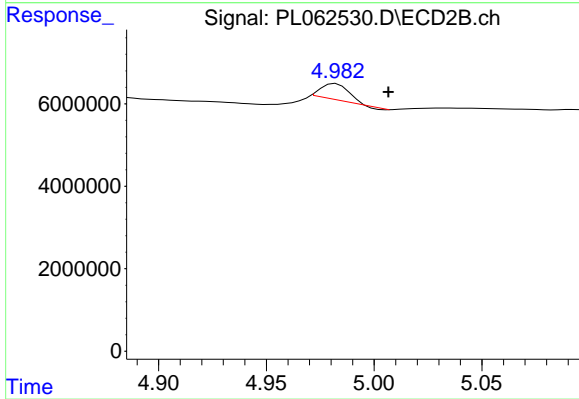
Instrument :
 ECD_L
 ClientSampled :



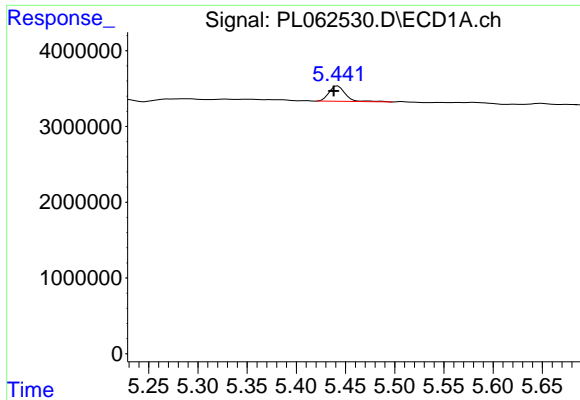
#1 Tetrachloro-m-xylene
 R.T.: 3.952 min
 Delta R.T.: 0.000 min
 Response: 52415372
 Conc: 17.84 ng/ml



#7 delta-BHC
 R.T.: 0.000 min
 Exp R.T. : 4.573 min
 Response: 0
 Conc: N.D.

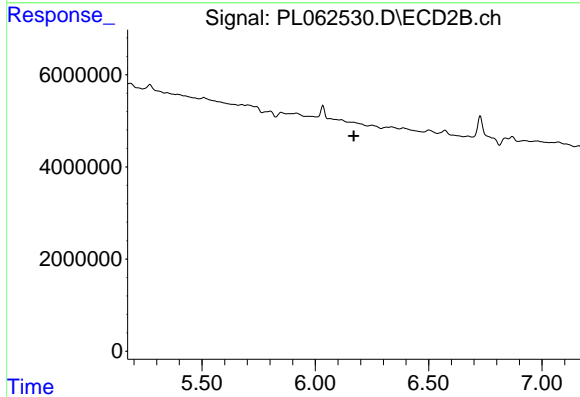


#7 delta-BHC
 R.T.: 4.982 min
 Delta R.T.: -0.024 min
 Response: 3372596
 Conc: 0.96 ng/ml

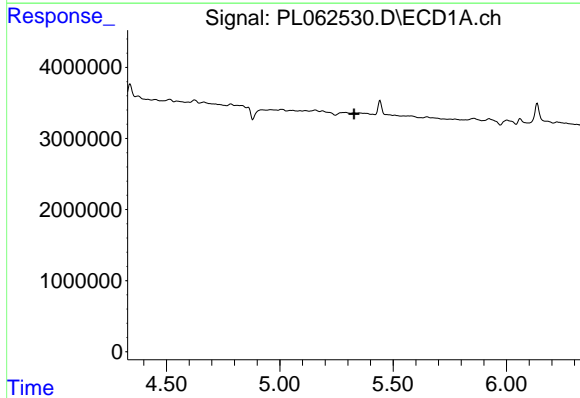


#9 Endosulfan I
 R.T.: 5.442 min
 Delta R.T.: 0.004 min
 Response: 2381969
 Conc: 1.42 ng/ml

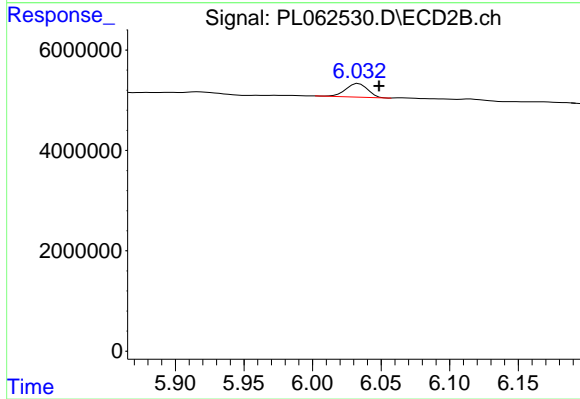
Instrument :
 ECD_L
 ClientSampleId :



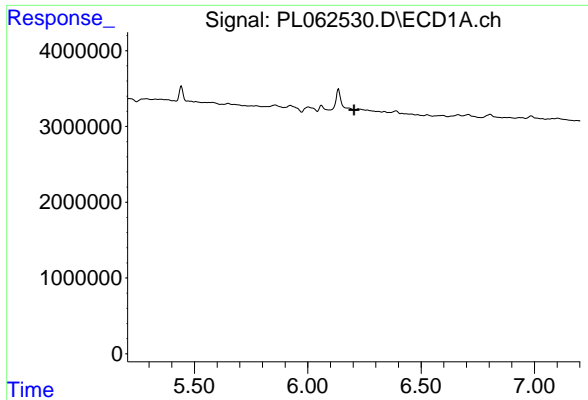
#9 Endosulfan I
 R.T.: 0.000 min
 Exp R.T. : 6.170 min
 Response: 0
 Conc: N.D.



#10 gamma-Chlordane
 R.T.: 0.000 min
 Exp R.T. : 5.328 min
 Response: 0
 Conc: N.D.

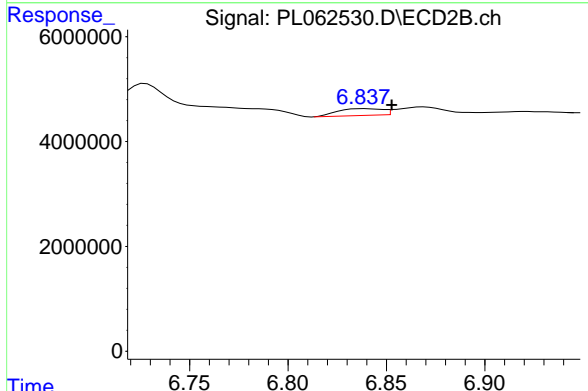


#10 gamma-Chlordane
 R.T.: 6.034 min
 Delta R.T.: -0.015 min
 Response: 3053526
 Conc: 0.91 ng/ml

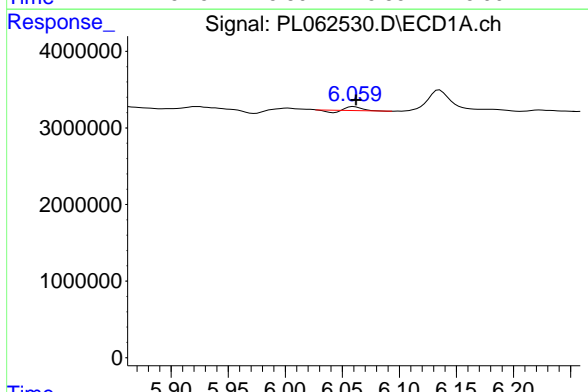


#15 Endosulfan II
 R.T.: 0.000 min
 Exp R.T.: 6.205 min
 Response: 0
 Conc: N.D.

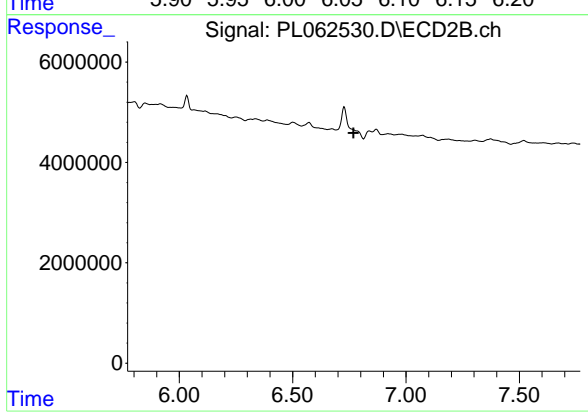
Instrument :
 ECD_L
 ClientSampleId :



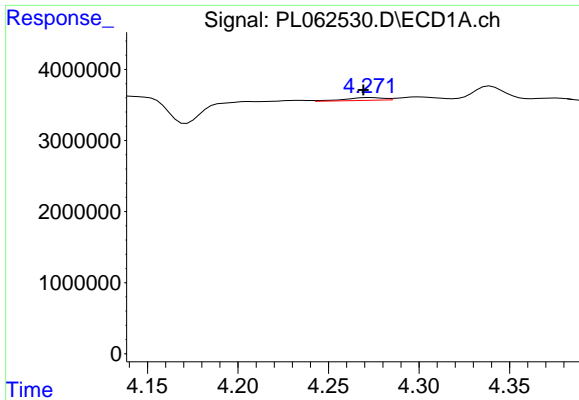
#15 Endosulfan II
 R.T.: 6.838 min
 Delta R.T.: -0.014 min
 Response: 2061662
 Conc: 0.72 ng/ml



#16 4,4'-DDD
 R.T.: 6.060 min
 Delta R.T.: -0.002 min
 Response: 275956
 Conc: 0.20 ng/ml

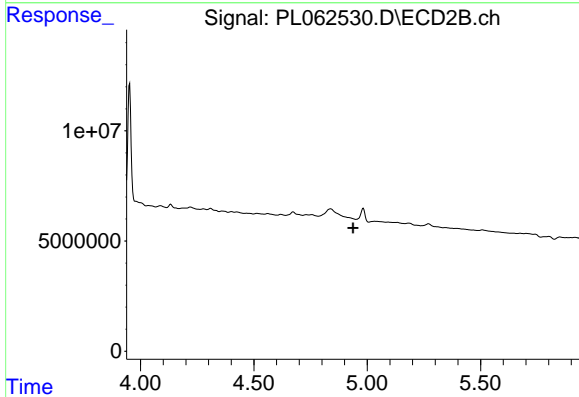


#16 4,4'-DDD
 R.T.: 0.000 min
 Exp R.T.: 6.768 min
 Response: 0
 Conc: N.D.

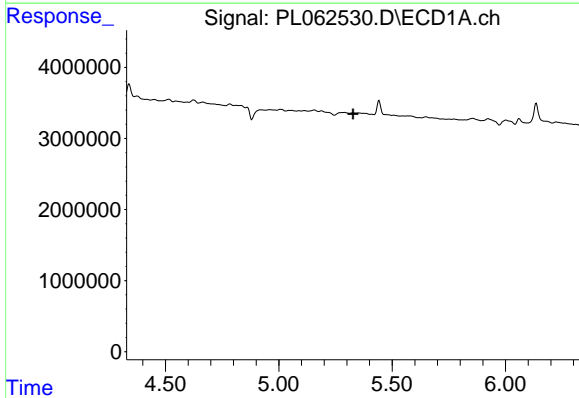


#23 Chlordane-1
 R.T.: 4.273 min
 Delta R.T.: 0.004 min
 Response: 574423
 Conc: 11.14 ng/ml

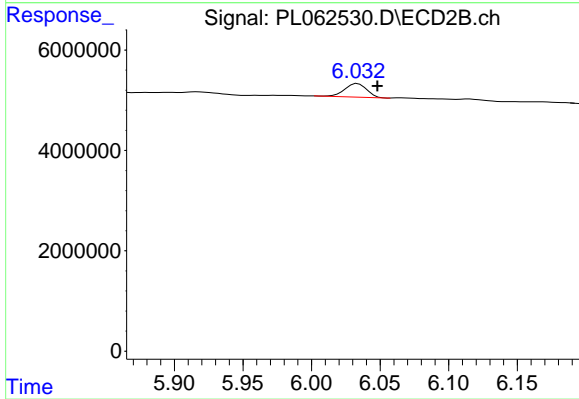
Instrument :
 ECD_L
 ClientSampled :



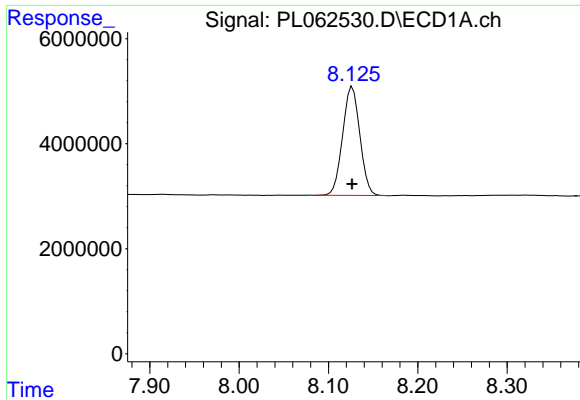
#23 Chlordane-1
 R.T.: 0.000 min
 Exp R.T. : 4.938 min
 Response: 0
 Conc: N.D.



#25 Chlordane-3
 R.T.: 0.000 min
 Exp R.T. : 5.328 min
 Response: 0
 Conc: N.D.



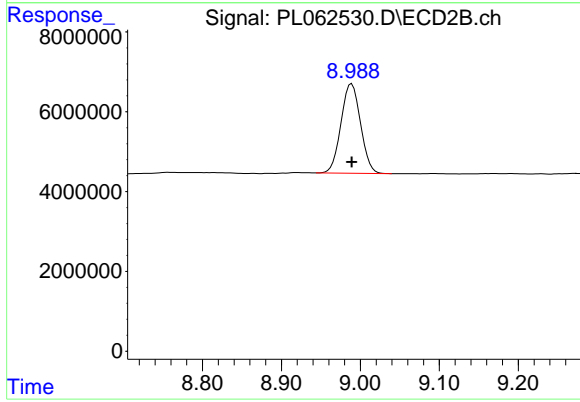
#25 Chlordane-3
 R.T.: 6.034 min
 Delta R.T.: -0.014 min
 Response: 3053526
 Conc: 7.56 ng/ml



#28 Decachlorobiphenyl

R.T.: 8.127 min
Delta R.T.: 0.000 min
Response: 27724252
Conc: 17.28 ng/ml

Instrument :
ECD_L
ClientSampleId :



#28 Decachlorobiphenyl

R.T.: 8.989 min
Delta R.T.: 0.000 min
Response: 38611011
Conc: 18.45 ng/ml