

Data Path : Z:\pestpcbsrv\HPCHEM1\ECD\_L\Data\PL102222\  
 Data File : PL078476.D  
 Signal(s) : Signal #1: ECD1A.ch Signal #2: ECD2B.ch  
 Acq On : 21 Oct 2022 16:34  
 Operator : AR\AJ  
 Sample : N5219-03  
 Misc :  
 ALS Vial : 20 Sample Multiplier: 1

Instrument :  
 ECD\_L  
 ClientSampleId :

Integration File signal 1: autoint1.e  
 Integration File signal 2: autoint2.e  
 Quant Time: Oct 22 02:01:42 2022  
 Quant Method : Z:\pestpcbsrv\HPCHEM1\ECD\_L\methods\PL102122.M  
 Quant Title : GC Extractables  
 QLast Update : Fri Oct 21 07:08:41 2022  
 Response via : Initial Calibration  
 Integrator: ChemStation

Volume Inj. : 1 µl  
 Signal #1 Phase : ZB-MR2 Signal #2 Phase: ZB-MR1  
 Signal #1 Info : 30M x 0.32mm x0.2 Signal #2 Info : 30M x 0.32mm x0.5µm

	Compound	RT#1	RT#2	Resp#1	Resp#2	ng/ml	ng/ml
-----							
System Monitoring Compounds							
1)	SA Tetrachlo...	3.323	2.572	35354577	48515793	18.539	19.002
28)	SA Decachlor...	8.775	7.643	17212841	23208181	11.442	12.253
Target Compounds							
3)	MA gamma-BHC...	4.135f	3.386	202570	320057	0.076	0.089
4)	MA Heptachlor	0.000	3.696	0	23418512	N.D.	6.753 #
5)	MB Aldrin	0.000	3.998f	0	1695057	N.D.	0.484 #
6)	B beta-BHC	4.307f	3.696	610749	23418512	0.530	16.321 #
7)	B delta-BHC	4.545f	3.898	948044	573742	0.416	0.158 #
8)	B Heptachlo...	5.464	4.484	758658	644518	0.357	0.214 #
9)	A Endosulfan I	5.831	4.868f	335198	487749	0.157	0.170
10)	B gamma-Chl...	5.715	4.723	511531	588803	0.227	0.192
11)	B alpha-Chl...	5.794	4.787	949969	950116	0.411	0.319
12)	B 4,4'-DDE	5.972	4.982	571140	399021	0.285	0.147 #
13)	MA Dieldrin	6.126	5.107	7592	548401	0.004	0.185 #
14)	MA Endrin	6.365	5.397f	165880	1464367	0.087	0.562 #
15)	B Endosulfa...	6.554f	5.642f	215443	154202	0.115	0.068 #
16)	A 4,4'-DDD	6.502	5.553f	185741	-205737	0.111	N.D. #
17)	MA 4,4'-DDT	6.814	5.777	155263	532822	0.087	0.246 #
18)	B Endrin al...	6.732f	5.855	61068	413290	0.042	0.220 #
19)	B Endosulfa...	6.949	6.068	1232673	1457917	0.670	0.612
20)	A Methoxychlor	0.000	6.372f	0	13239	N.D.	0.012 #
21)	B Endrin ke...	7.435	0.000	314276	0	0.167	N.D. #
22)	Mirex	7.882	6.721f	320717	1880816	0.220	0.956 #
25)	Chlordane-3	5.715	4.723	511531	588803	1.531	1.932 #
26)	Chlordane-4	5.794	4.787	949969	950116	2.314	2.908 #
27)	Chlordane-5	0.000	5.451	0	62525	N.D.	0.767 #

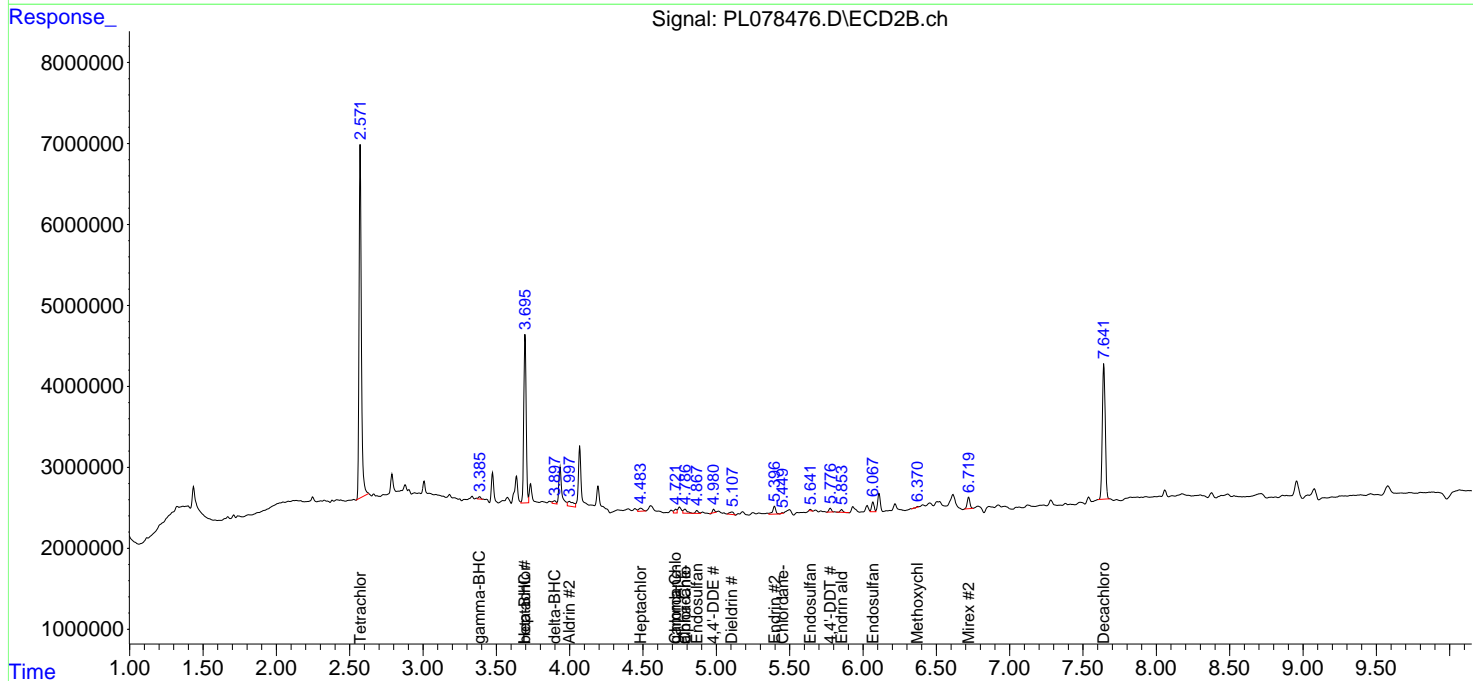
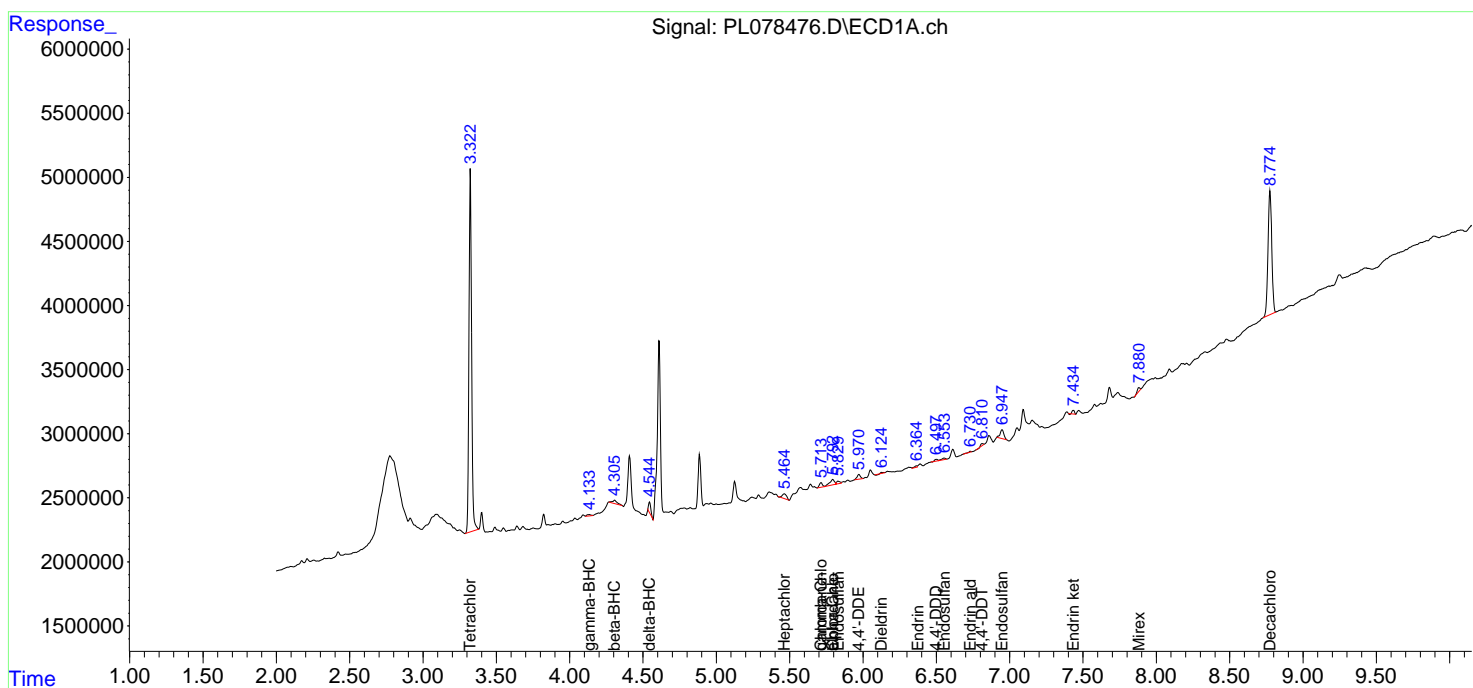
(f)=RT Delta > 1/2 Window (#)=Amounts differ by > 25% (m)=manual int.

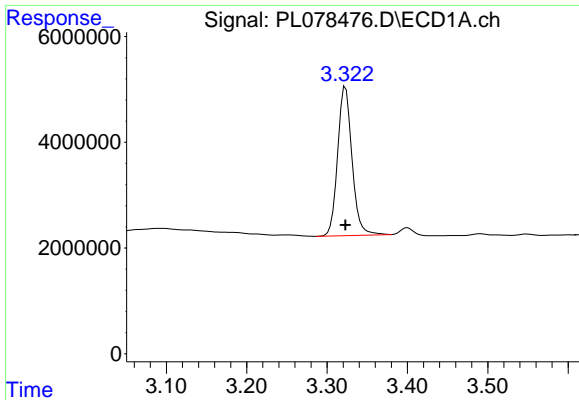
Data Path : Z:\pestpcbsrv\HPCHEM1\ECD\_L\Data\PL102222\  
 Data File : PL078476.D  
 Signal(s) : Signal #1: ECD1A.ch Signal #2: ECD2B.ch  
 Acq On : 21 Oct 2022 16:34  
 Operator : AR\AJ  
 Sample : N5219-03  
 Misc :  
 ALS Vial : 20 Sample Multiplier: 1

Instrument :  
 ECD\_L  
 ClientSampleId :

Integration File signal 1: autoint1.e  
 Integration File signal 2: autoint2.e  
 Quant Time: Oct 22 02:01:42 2022  
 Quant Method : Z:\pestpcbsrv\HPCHEM1\ECD\_L\methods\PL102122.M  
 Quant Title : GC Extractables  
 QLast Update : Fri Oct 21 07:08:41 2022  
 Response via : Initial Calibration  
 Integrator: ChemStation

Volume Inj. : 1 µl  
 Signal #1 Phase : ZB-MR2 Signal #2 Phase: ZB-MR1  
 Signal #1 Info : 30M x 0.32mm x0.2 Signal #2 Info : 30M x 0.32mm x0.5µm

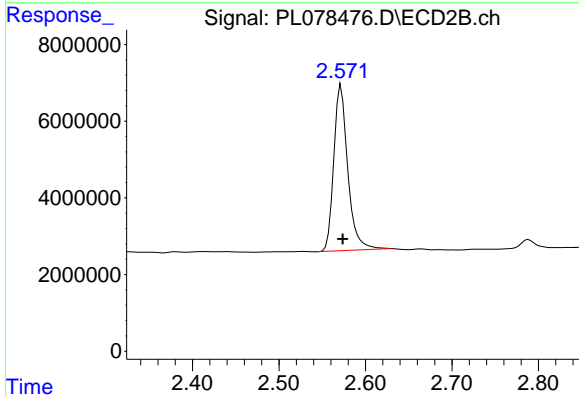




#1 Tetrachloro-m-xylene

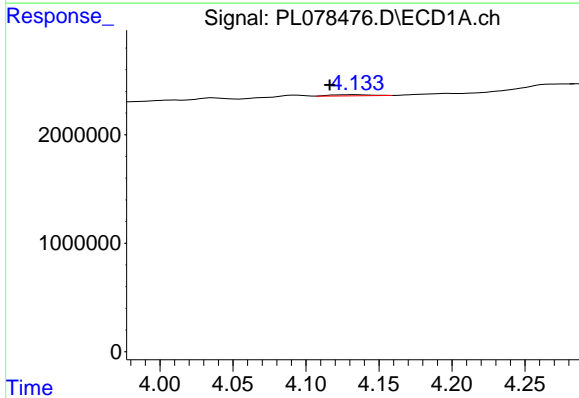
R.T.: 3.323 min  
 Delta R.T.: 0.000 min  
 Response: 35354577  
 Conc: 18.54 ng/ml

Instrument :  
 ECD\_L  
 ClientSampleId :



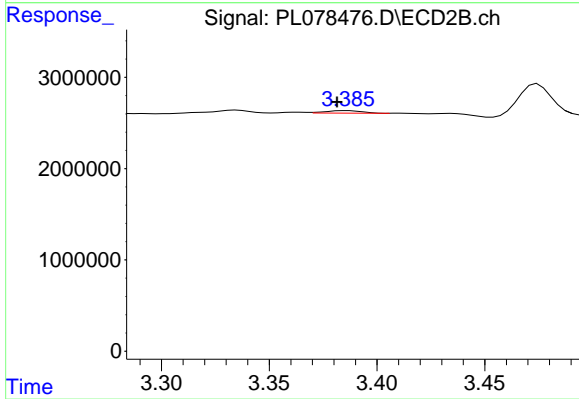
#1 Tetrachloro-m-xylene

R.T.: 2.572 min  
 Delta R.T.: -0.002 min  
 Response: 48515793  
 Conc: 19.00 ng/ml



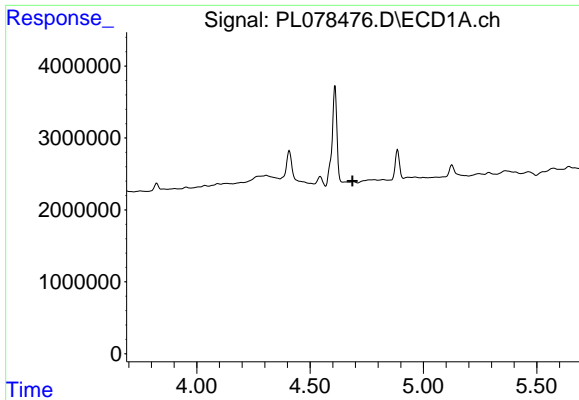
#3 gamma-BHC (Lindane)

R.T.: 4.135 min  
 Delta R.T.: 0.019 min  
 Response: 202570  
 Conc: 0.08 ng/ml



#3 gamma-BHC (Lindane)

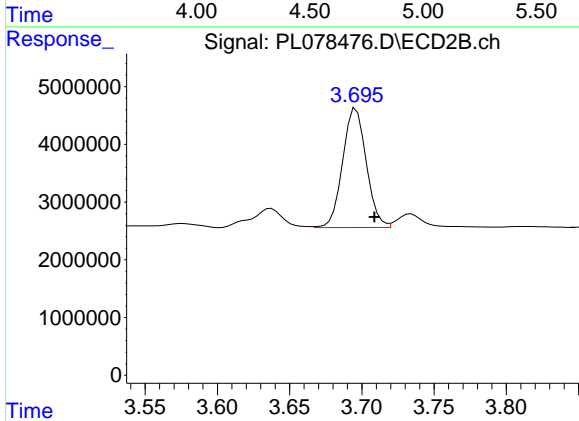
R.T.: 3.386 min  
 Delta R.T.: 0.005 min  
 Response: 320057  
 Conc: 0.09 ng/ml



#4 Heptachlor

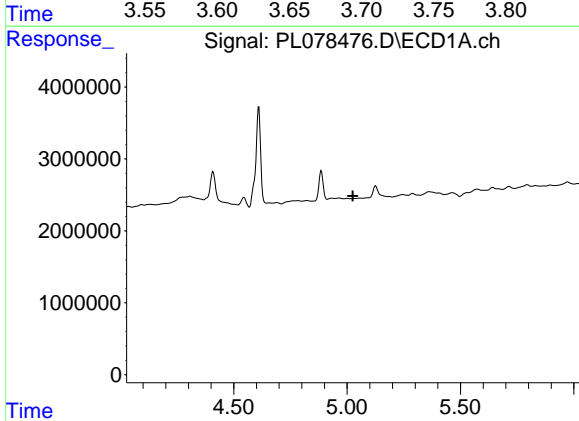
R.T.: 0.000 min  
 Exp R.T.: 4.688 min  
 Response: 0  
 Conc: N.D.

Instrument :  
 ECD\_L  
 ClientSampleId :



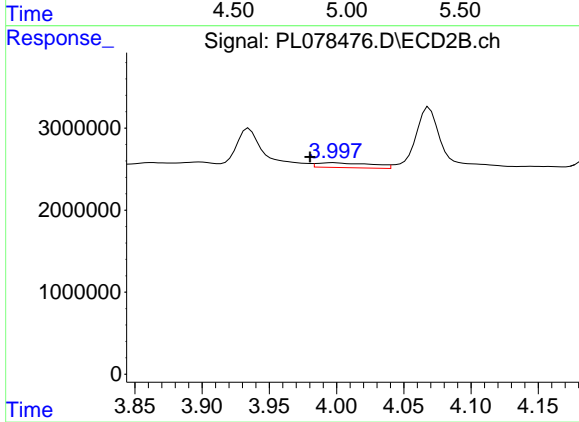
#4 Heptachlor

R.T.: 3.696 min  
 Delta R.T.: -0.013 min  
 Response: 23418512  
 Conc: 6.75 ng/ml



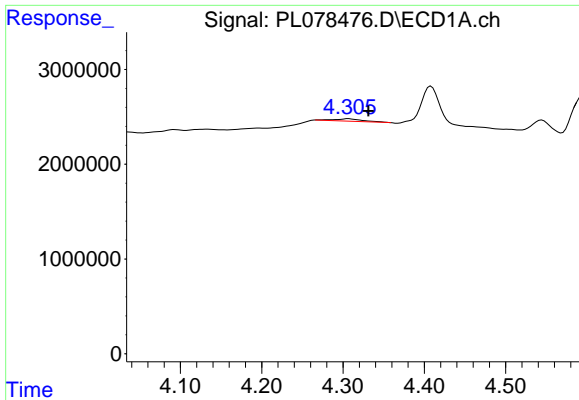
#5 Aldrin

R.T.: 0.000 min  
 Exp R.T.: 5.025 min  
 Response: 0  
 Conc: N.D.



#5 Aldrin

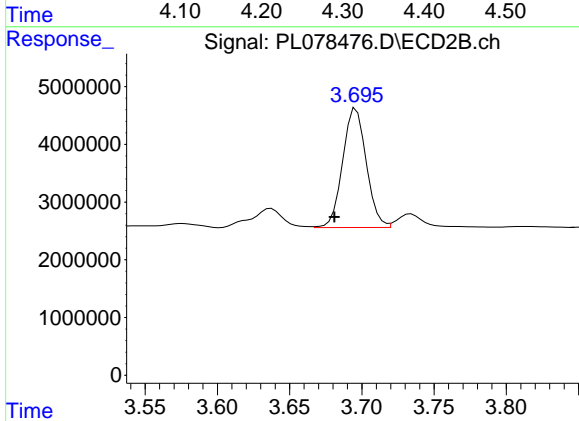
R.T.: 3.998 min  
 Delta R.T.: 0.017 min  
 Response: 1695057  
 Conc: 0.48 ng/ml



#6 beta-BHC

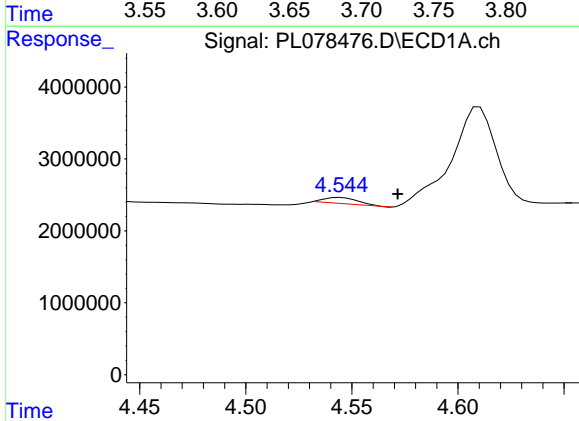
R.T.: 4.307 min  
 Delta R.T.: -0.024 min  
 Response: 610749  
 Conc: 0.53 ng/ml

Instrument :  
 ECD\_L  
 ClientSampleId :



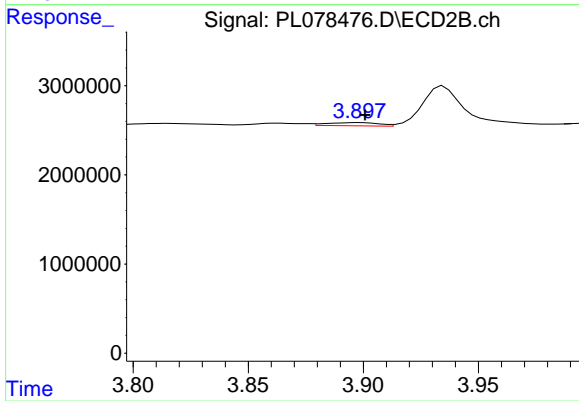
#6 beta-BHC

R.T.: 3.696 min  
 Delta R.T.: 0.015 min  
 Response: 23418512  
 Conc: 16.32 ng/ml



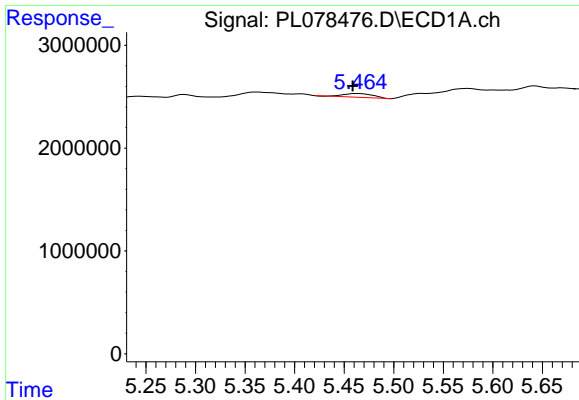
#7 delta-BHC

R.T.: 4.545 min  
 Delta R.T.: -0.027 min  
 Response: 948044  
 Conc: 0.42 ng/ml



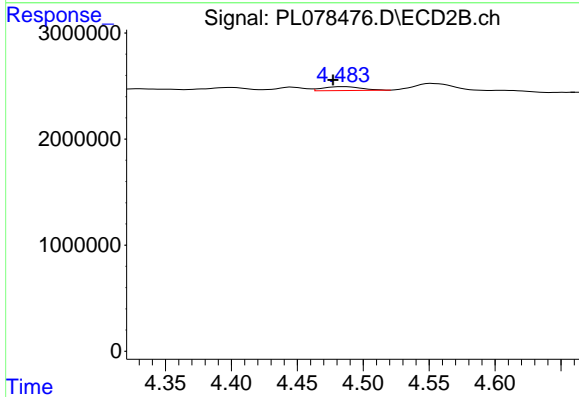
#7 delta-BHC

R.T.: 3.898 min  
 Delta R.T.: -0.002 min  
 Response: 573742  
 Conc: 0.16 ng/ml

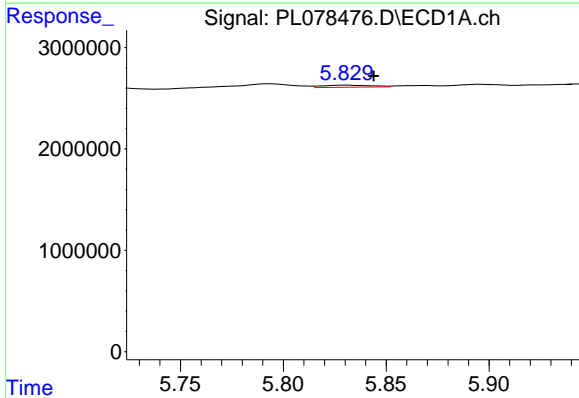


#8 Heptachlor epoxide  
 R.T.: 5.464 min  
 Delta R.T.: 0.006 min  
 Response: 758658  
 Conc: 0.36 ng/ml

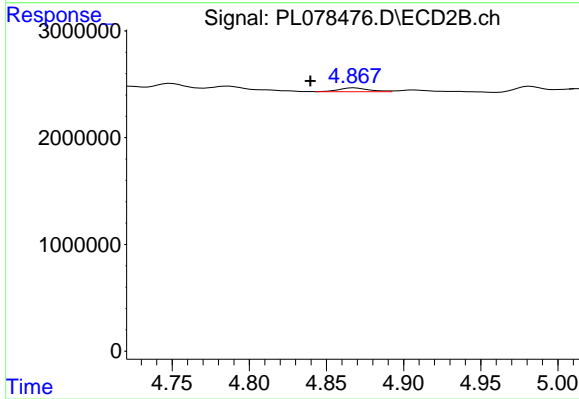
Instrument :  
 ECD\_L  
 ClientSampleId :



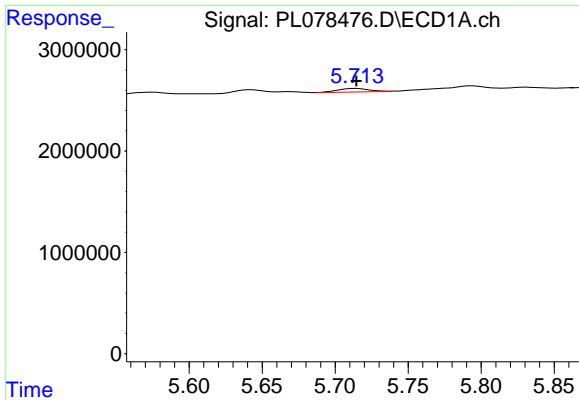
#8 Heptachlor epoxide  
 R.T.: 4.484 min  
 Delta R.T.: 0.007 min  
 Response: 644518  
 Conc: 0.21 ng/ml



#9 Endosulfan I  
 R.T.: 5.831 min  
 Delta R.T.: -0.013 min  
 Response: 335198  
 Conc: 0.16 ng/ml



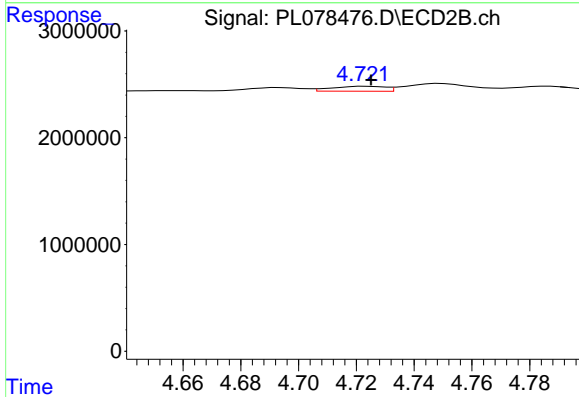
#9 Endosulfan I  
 R.T.: 4.868 min  
 Delta R.T.: 0.028 min  
 Response: 487749  
 Conc: 0.17 ng/ml



#10 gamma-Chlordane

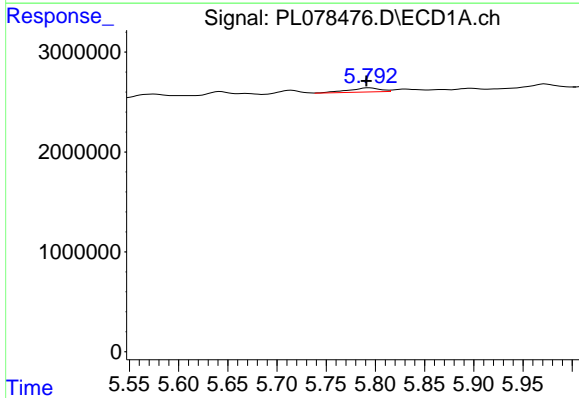
R.T.: 5.715 min  
 Delta R.T.: 0.000 min  
 Response: 511531  
 Conc: 0.23 ng/ml

Instrument :  
 ECD\_L  
 ClientSampleId :



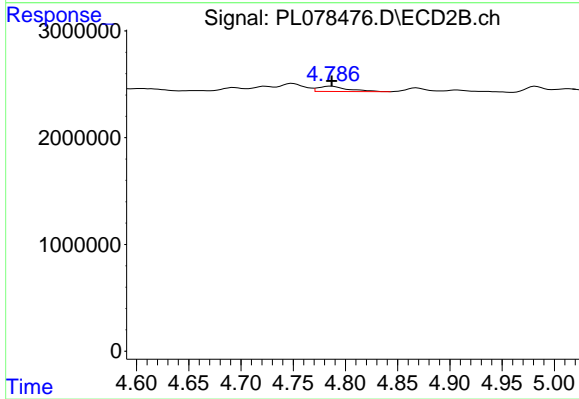
#10 gamma-Chlordane

R.T.: 4.723 min  
 Delta R.T.: -0.002 min  
 Response: 588803  
 Conc: 0.19 ng/ml



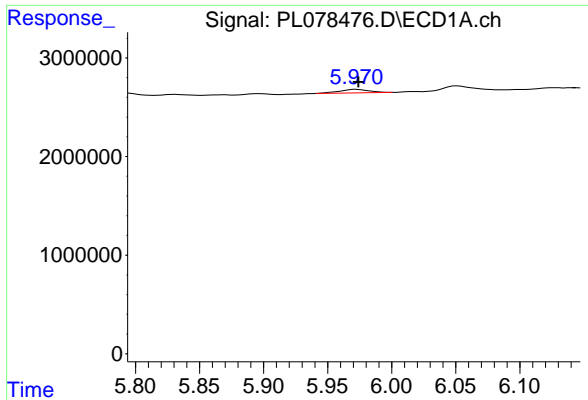
#11 alpha-Chlordane

R.T.: 5.794 min  
 Delta R.T.: 0.003 min  
 Response: 949969  
 Conc: 0.41 ng/ml



#11 alpha-Chlordane

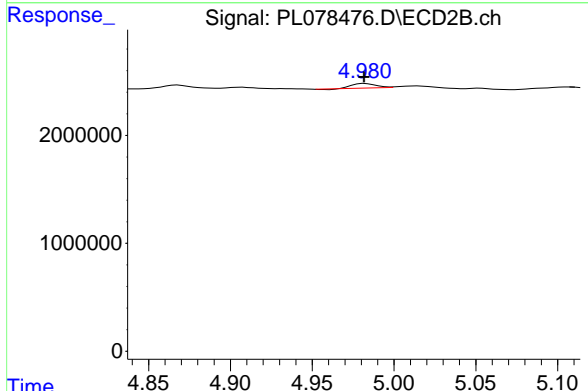
R.T.: 4.787 min  
 Delta R.T.: 0.000 min  
 Response: 950116  
 Conc: 0.32 ng/ml



#12 4,4'-DDE

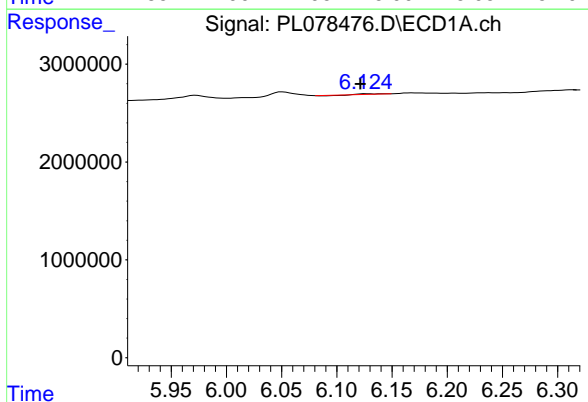
R.T.: 5.972 min  
 Delta R.T.: -0.002 min  
 Response: 571140  
 Conc: 0.29 ng/ml

Instrument :  
 ECD\_L  
 ClientSampleId :



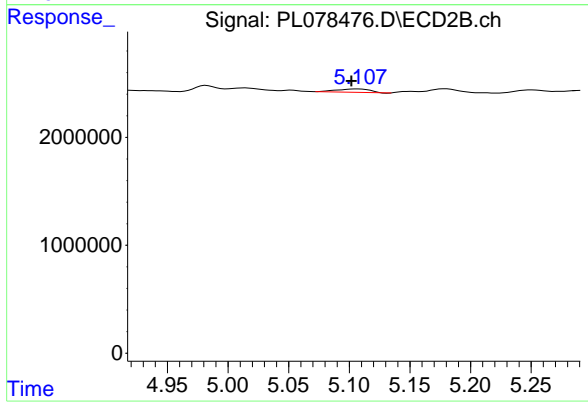
#12 4,4'-DDE

R.T.: 4.982 min  
 Delta R.T.: 0.000 min  
 Response: 399021  
 Conc: 0.15 ng/ml



#13 Dieldrin

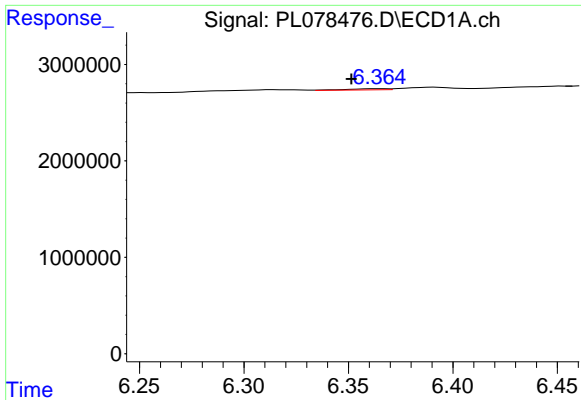
R.T.: 6.126 min  
 Delta R.T.: 0.004 min  
 Response: 7592  
 Conc: 0.00 ng/ml



#13 Dieldrin

R.T.: 5.107 min  
 Delta R.T.: 0.005 min  
 Response: 548401  
 Conc: 0.19 ng/ml

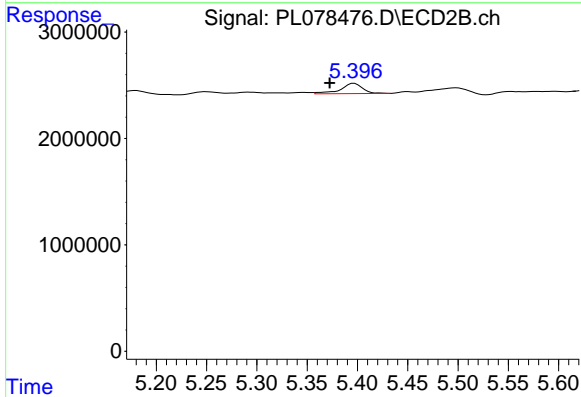




#14 Endrin

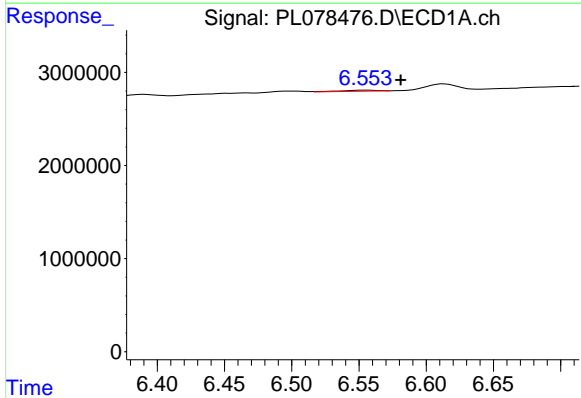
R.T.: 6.365 min  
 Delta R.T.: 0.013 min  
 Response: 165880  
 Conc: 0.09 ng/ml

Instrument :  
 ECD\_L  
 ClientSampleId :



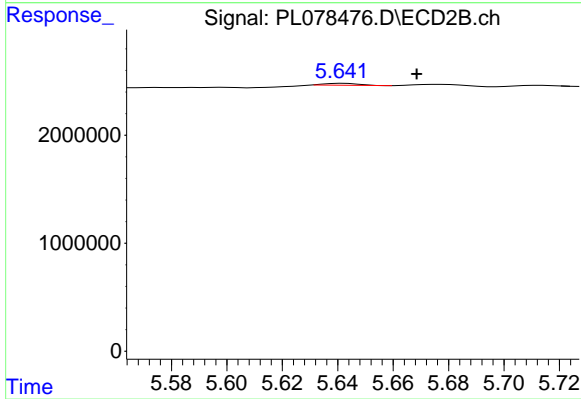
#14 Endrin

R.T.: 5.397 min  
 Delta R.T.: 0.024 min  
 Response: 1464367  
 Conc: 0.56 ng/ml



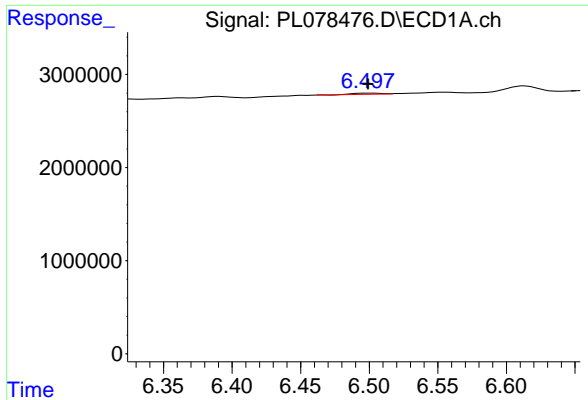
#15 Endosulfan II

R.T.: 6.554 min  
 Delta R.T.: -0.027 min  
 Response: 215443  
 Conc: 0.11 ng/ml



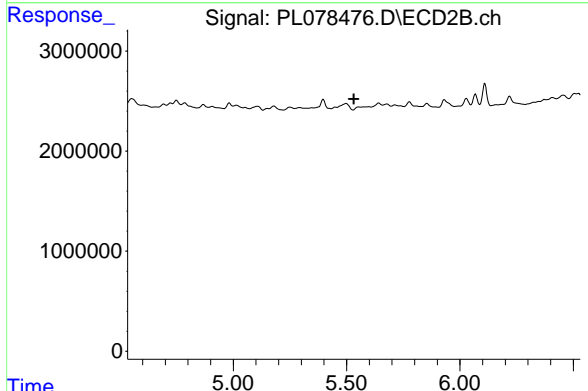
#15 Endosulfan II

R.T.: 5.642 min  
 Delta R.T.: -0.027 min  
 Response: 154202  
 Conc: 0.07 ng/ml

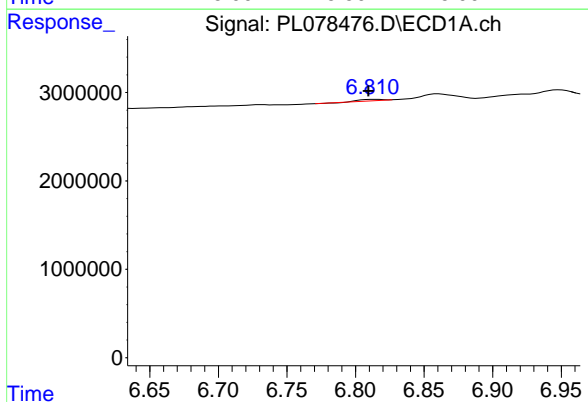


#16 4,4'-DDD  
 R.T.: 6.502 min  
 Delta R.T.: 0.003 min  
 Response: 185741  
 Conc: 0.11 ng/ml

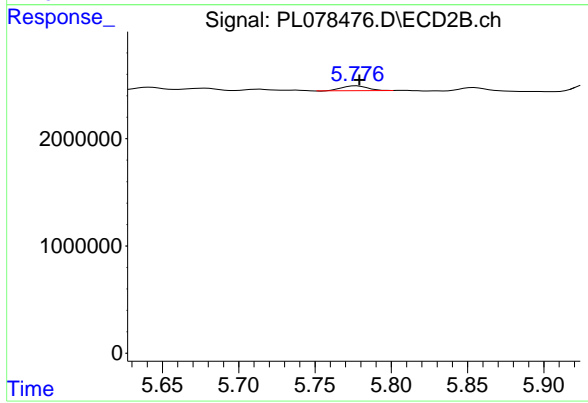
Instrument :  
 ECD\_L  
 ClientSampleId :



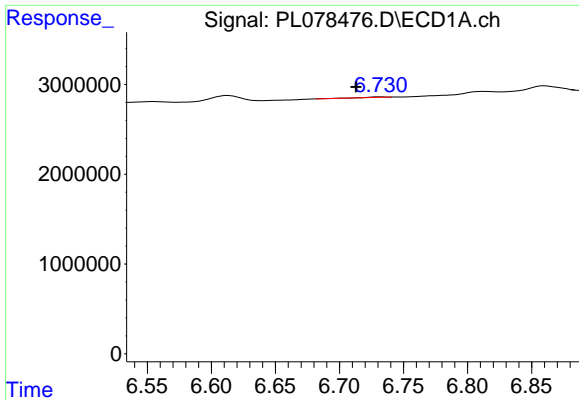
#16 4,4'-DDD  
 R.T.: 5.553 min  
 Delta R.T.: 0.021 min  
 Response: -205737  
 Conc: N.D.



#17 4,4'-DDT  
 R.T.: 6.814 min  
 Delta R.T.: 0.004 min  
 Response: 155263  
 Conc: 0.09 ng/ml



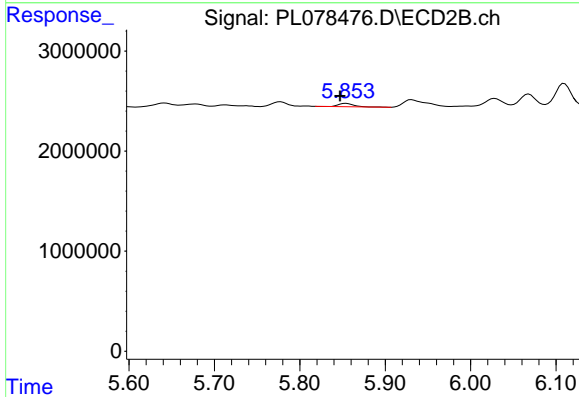
#17 4,4'-DDT  
 R.T.: 5.777 min  
 Delta R.T.: -0.002 min  
 Response: 532822  
 Conc: 0.25 ng/ml



#18 Endrin aldehyde

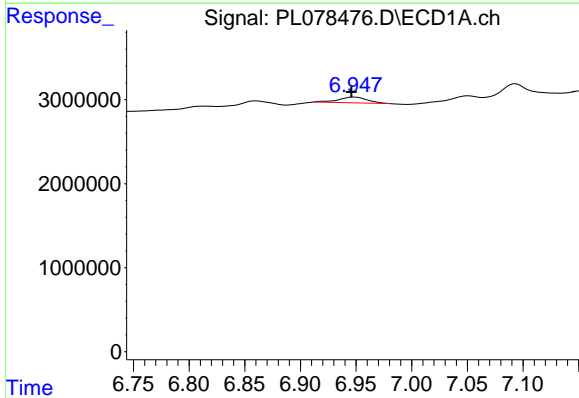
R.T.: 6.732 min  
 Delta R.T.: 0.019 min  
 Response: 61068  
 Conc: 0.04 ng/ml

Instrument :  
 ECD\_L  
 ClientSampleId :



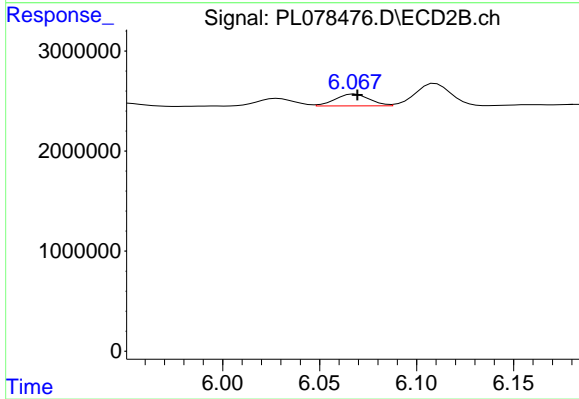
#18 Endrin aldehyde

R.T.: 5.855 min  
 Delta R.T.: 0.007 min  
 Response: 413290  
 Conc: 0.22 ng/ml



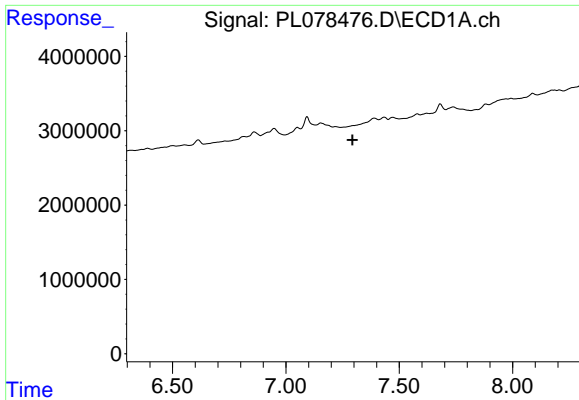
#19 Endosulfan Sulfate

R.T.: 6.949 min  
 Delta R.T.: 0.003 min  
 Response: 1232673  
 Conc: 0.67 ng/ml



#19 Endosulfan Sulfate

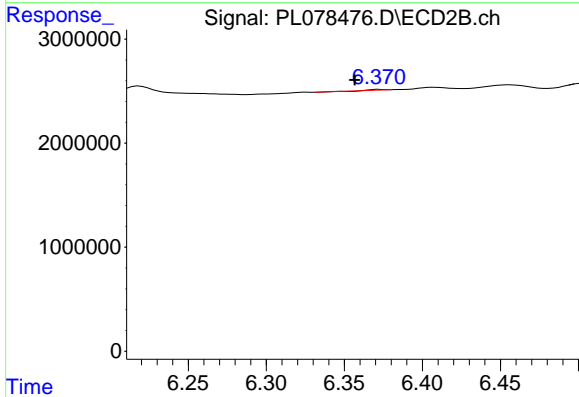
R.T.: 6.068 min  
 Delta R.T.: -0.001 min  
 Response: 1457917  
 Conc: 0.61 ng/ml



#20 Methoxychlor

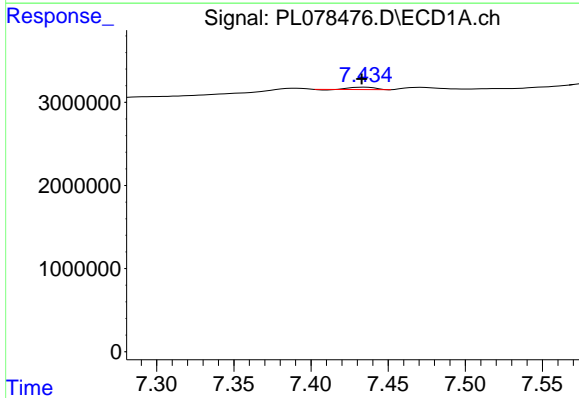
R.T.: 0.000 min  
 Exp R.T.: 7.294 min  
 Response: 0  
 Conc: N.D.

Instrument :  
 ECD\_L  
 ClientSampleId :



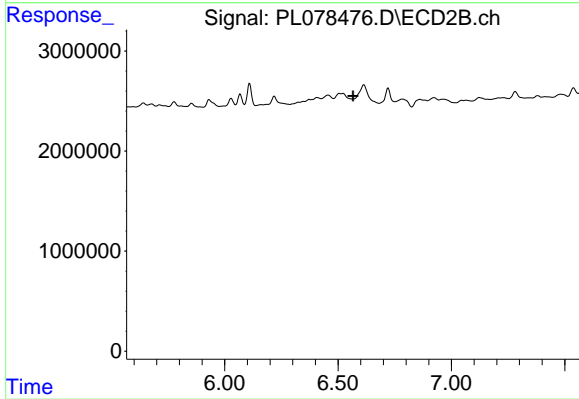
#20 Methoxychlor

R.T.: 6.372 min  
 Delta R.T.: 0.016 min  
 Response: 13239  
 Conc: 0.01 ng/ml



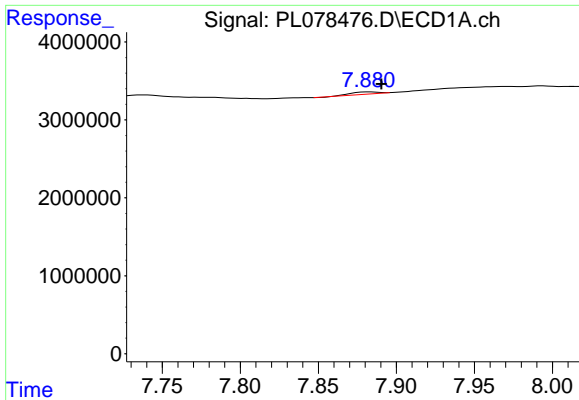
#21 Endrin ketone

R.T.: 7.435 min  
 Delta R.T.: 0.002 min  
 Response: 314276  
 Conc: 0.17 ng/ml



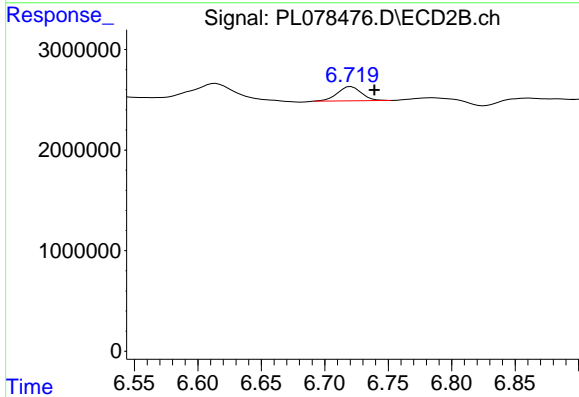
#21 Endrin ketone

R.T.: 0.000 min  
 Exp R.T.: 6.566 min  
 Response: 0  
 Conc: N.D.

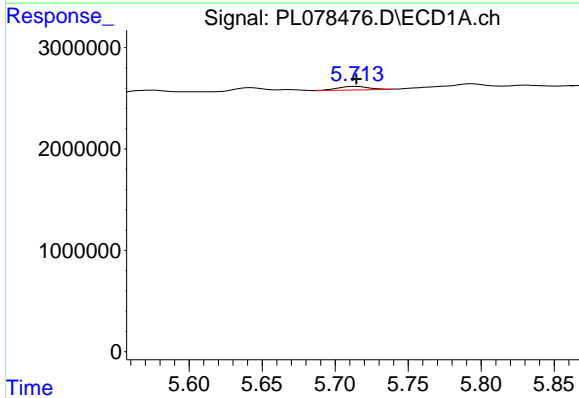


#22 Mirex  
 R.T.: 7.882 min  
 Delta R.T.: -0.008 min  
 Response: 320717  
 Conc: 0.22 ng/ml

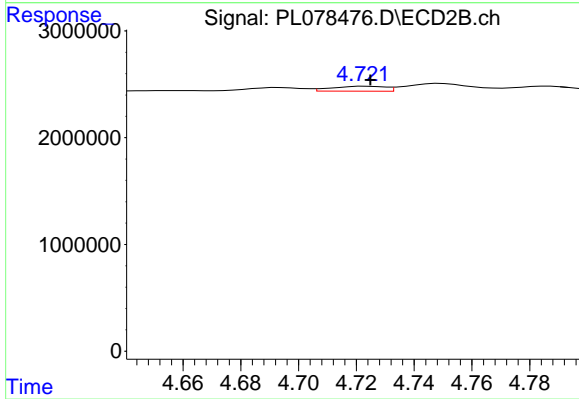
Instrument :  
 ECD\_L  
 ClientSampleId :



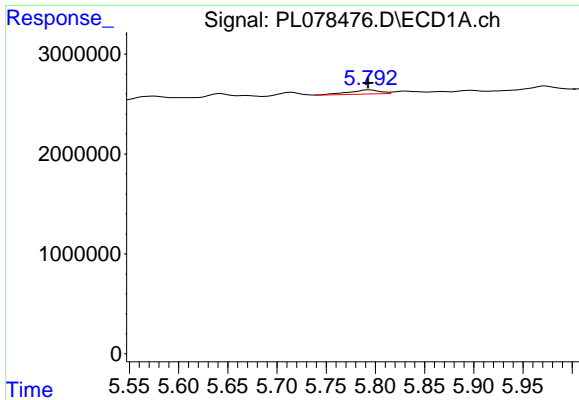
#22 Mirex  
 R.T.: 6.721 min  
 Delta R.T.: -0.018 min  
 Response: 1880816  
 Conc: 0.96 ng/ml



#25 Chlordane-3  
 R.T.: 5.715 min  
 Delta R.T.: 0.000 min  
 Response: 511531  
 Conc: 1.53 ng/ml



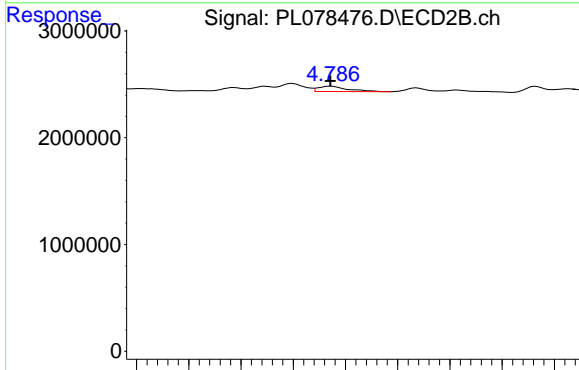
#25 Chlordane-3  
 R.T.: 4.723 min  
 Delta R.T.: -0.002 min  
 Response: 588803  
 Conc: 1.93 ng/ml



#26 Chlordane-4

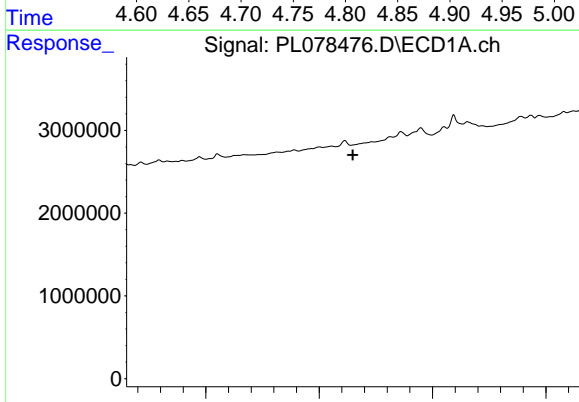
R.T.: 5.794 min  
 Delta R.T.: 0.001 min  
 Response: 949969  
 Conc: 2.31 ng/ml

Instrument :  
 ECD\_L  
 ClientSampleId :



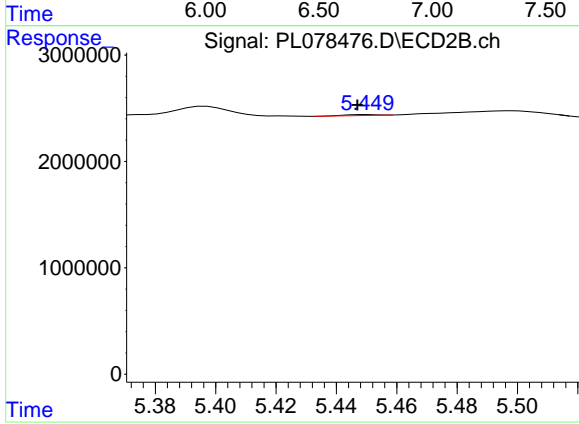
#26 Chlordane-4

R.T.: 4.787 min  
 Delta R.T.: 0.001 min  
 Response: 950116  
 Conc: 2.91 ng/ml



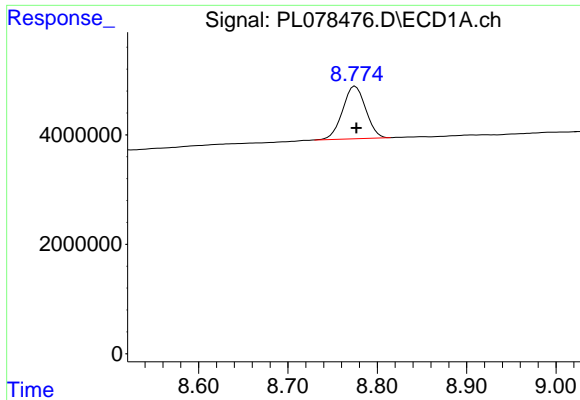
#27 Chlordane-5

R.T.: 0.000 min  
 Exp R.T. : 6.649 min  
 Response: 0  
 Conc: N.D.



#27 Chlordane-5

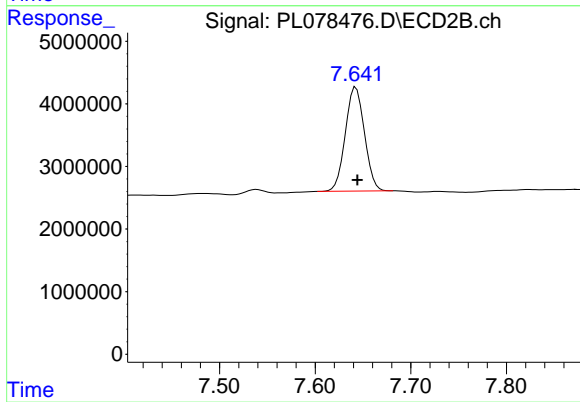
R.T.: 5.451 min  
 Delta R.T.: 0.004 min  
 Response: 62525  
 Conc: 0.77 ng/ml



#28 Decachlorobiphenyl

R.T.: 8.775 min  
Delta R.T.: -0.001 min  
Response: 17212841  
Conc: 11.44 ng/ml

Instrument :  
ECD\_L  
ClientSampleId :



#28 Decachlorobiphenyl

R.T.: 7.643 min  
Delta R.T.: -0.002 min  
Response: 23208181  
Conc: 12.25 ng/ml