

Data Path : Z:\pestpcbsrv\HPCHEM1\ECD_L\Data\PL102318\
 Data File : PL041236.D
 Signal(s) : Signal #1: ECD1A.ch Signal #2: ECD2B.ch
 Acq On : 23 Oct 2018 12:52
 Operator : AJ\SJ
 Sample : INDB201
 Misc :
 ALS Vial : 12 Sample Multiplier: 1

Instrument :
 ECD_L
 ClientSampleId :

Integration File signal 1: autoint1.e
 Integration File signal 2: autoint2.e
 Quant Time: Oct 23 14:49:01 2018
 Quant Method : Z:\pestpcbsrv\HPCHEM1\ECD_L\methods\PL102318CLP.M
 Quant Title : GC Extractables
 QLast Update : Tue Oct 23 14:47:51 2018
 Response via : Initial Calibration
 Integrator: ChemStation

Volume Inj. : 1 µl
 Signal #1 Phase : ZB-MR1 Signal #2 Phase: ZB-MR1
 Signal #1 Info : 30M x 0.32mm x0.2 Signal #2 Info : 30M x 0.32mm x 0.50µm

Compound	RT#1	RT#2	Resp#1	Resp#2	ng/ml	ng/ml

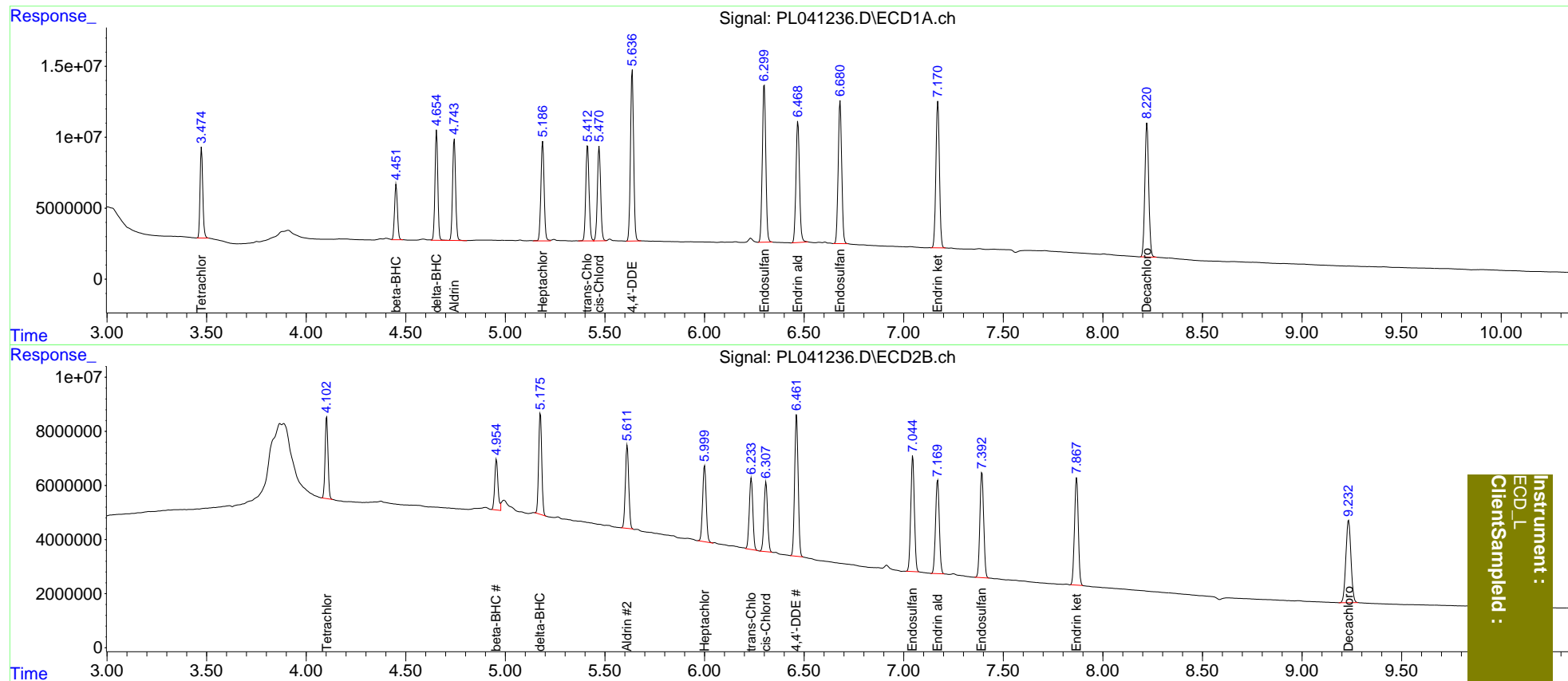
System Monitoring Compounds						
1) SA Tetrachlo...	3.475	4.103	60517683	30891224	9.998	10.064
27) SA Decachlor...	8.222	9.234	127.9E6	54026706	21.214	21.193
Target Compounds						
5) MB Aldrin	4.744	5.612	75529953	36177698	9.541	9.812
6) B beta-BHC	4.452	4.956	39119385	21291785	10.245	10.594
7) B delta-BHC	4.655	5.176	76064391	40214664	9.398	9.822
8) B Heptachlo...	5.188	6.001	78473566	35251604	10.075	10.172
10) B trans-Chl...	5.413	6.235	76724733	32189660	9.958	9.887
11) B cis-Chlor...	5.471	6.309	76309453	31997290	10.039	9.977
12) B 4,4'-DDE	5.637	6.462	133.6E6	63845766	18.998	19.723
15) B Endosulfa...	6.300	7.046	133.9E6	54040319	19.865	19.996
18) B Endrin al...	6.469	7.171	105.5E6	45452778	20.135	20.288
19) B Endosulfa...	6.681	7.393	124.3E6	51473190	19.918	20.205
21) B Endrin ke...	7.172	7.868	127.7E6	52515676	19.534	19.943

(f)=RT Delta > 1/2 Window (#)=Amounts differ by > 25% (m)=manual int.

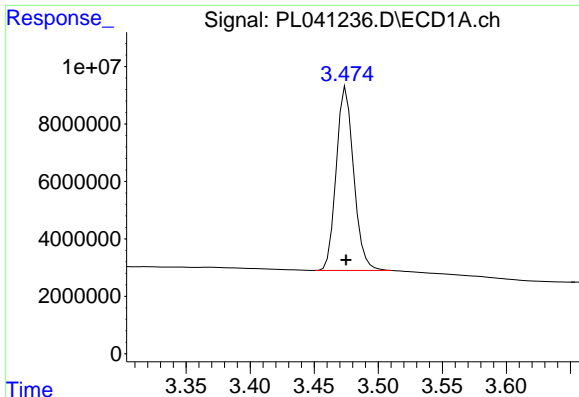
Data Path : Z:\pestpcbsrv\HPCHEM1\ECD_L\Data\PL102318\
 Data File : PL041236.D
 Signal(s) : Signal #1: ECD1A.ch Signal #2: ECD2B.ch
 Acq On : 23 Oct 2018 12:52
 Operator : AJ\SJ
 Sample : INDB201
 Misc :
 ALS Vial : 12 Sample Multiplier: 1

Integration File signal 1: autoint1.e
 Integration File signal 2: autoint2.e
 Quant Time: Oct 23 14:49:01 2018
 Quant Method : Z:\pestpcbsrv\HPCHEM1\ECD_L\methods\PL102318CLP.M
 Quant Title : GC Extractables
 QLast Update : Tue Oct 23 14:47:51 2018
 Response via : Initial Calibration
 Integrator: ChemStation

Volume Inj. : 1 µl
 Signal #1 Phase : ZB-MR2 Signal #2 Phase: ZB-MR1
 Signal #1 Info : 30M x 0.32mm x0.2 Signal #2 Info : 30M x 0.32mm x 0.50µm



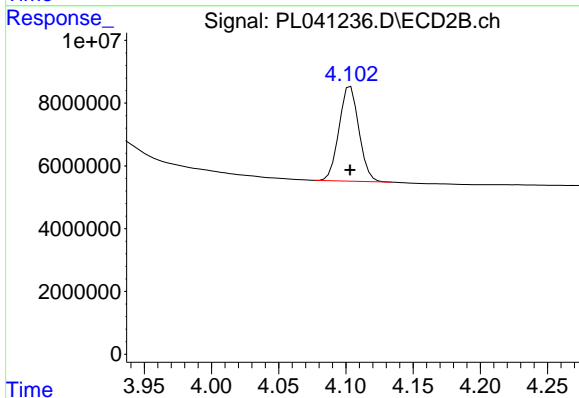
Instrument :
 ECD_L
 ClientSampleId :



#1 Tetrachloro-m-xylene

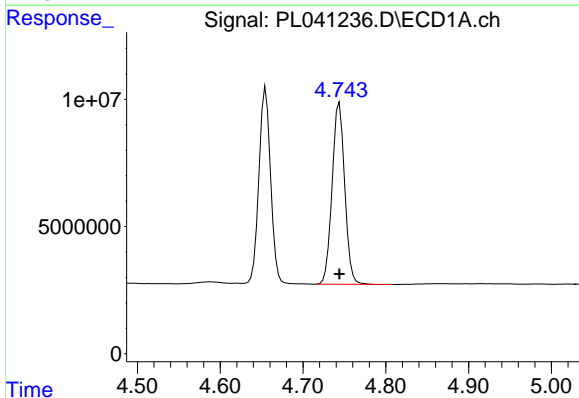
R.T.: 3.475 min
 Delta R.T.: 0.000 min
 Response: 60517683
 Conc: 10.00 ng/ml

Instrument :
 ECD_L
 ClientSampleId :



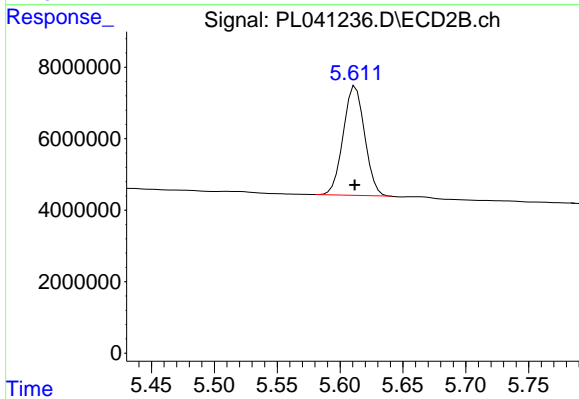
#1 Tetrachloro-m-xylene

R.T.: 4.103 min
 Delta R.T.: 0.000 min
 Response: 30891224
 Conc: 10.06 ng/ml



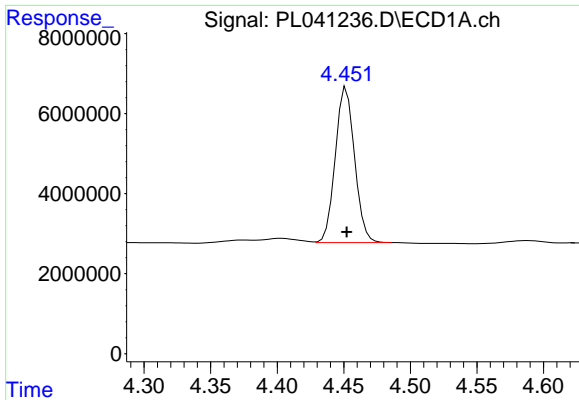
#5 Aldrin

R.T.: 4.744 min
 Delta R.T.: 0.000 min
 Response: 75529953
 Conc: 9.54 ng/ml



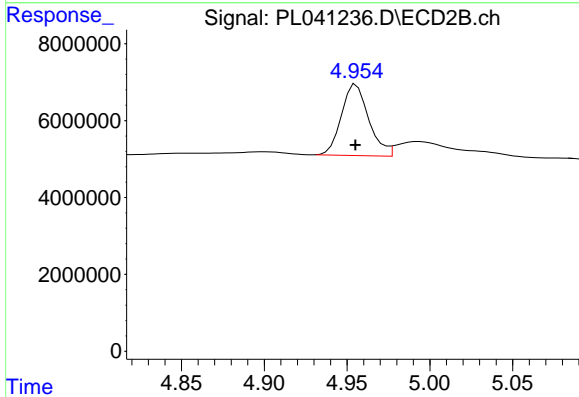
#5 Aldrin

R.T.: 5.612 min
 Delta R.T.: 0.000 min
 Response: 36177698
 Conc: 9.81 ng/ml

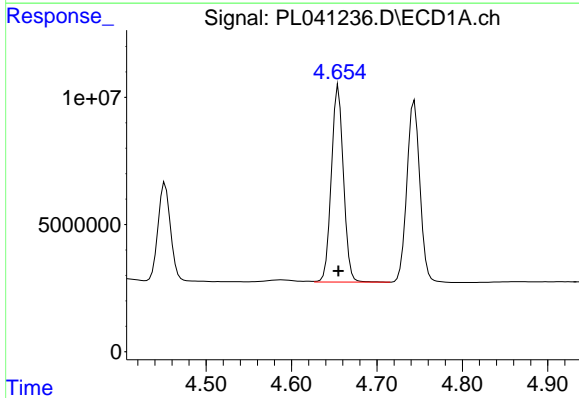


#6 beta-BHC
 R.T.: 4.452 min
 Delta R.T.: 0.000 min
 Response: 39119385
 Conc: 10.24 ng/ml

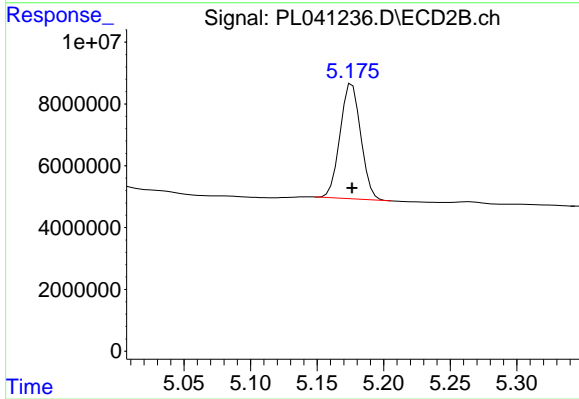
Instrument :
 ECD_L
 ClientSampleId :



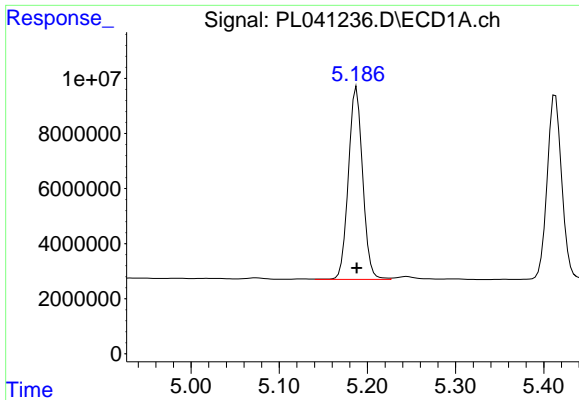
#6 beta-BHC
 R.T.: 4.956 min
 Delta R.T.: 0.000 min
 Response: 21291785
 Conc: 10.59 ng/ml



#7 delta-BHC
 R.T.: 4.655 min
 Delta R.T.: 0.000 min
 Response: 76064391
 Conc: 9.40 ng/ml

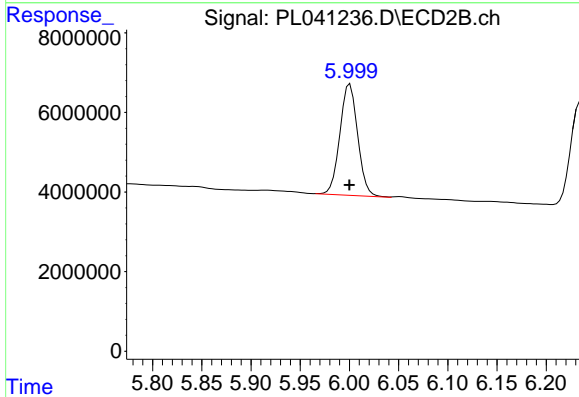


#7 delta-BHC
 R.T.: 5.176 min
 Delta R.T.: 0.000 min
 Response: 40214664
 Conc: 9.82 ng/ml

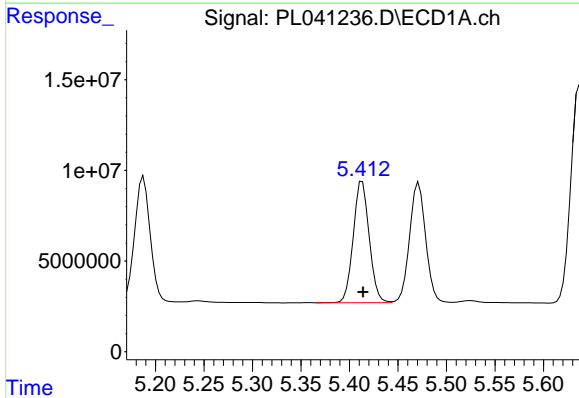


#8 Heptachlor epoxide
 R.T.: 5.188 min
 Delta R.T.: 0.000 min
 Response: 78473566
 Conc: 10.08 ng/ml

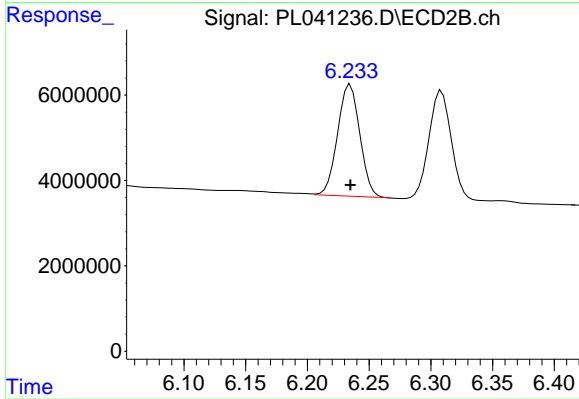
Instrument :
 ECD_L
 ClientSampleId :



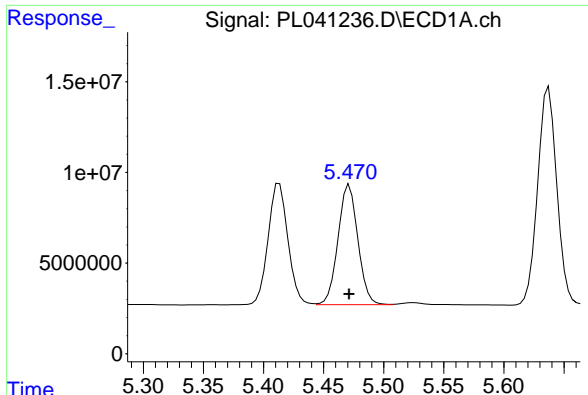
#8 Heptachlor epoxide
 R.T.: 6.001 min
 Delta R.T.: 0.000 min
 Response: 35251604
 Conc: 10.17 ng/ml



#10 trans-Chlordane
 R.T.: 5.413 min
 Delta R.T.: 0.000 min
 Response: 76724733
 Conc: 9.96 ng/ml

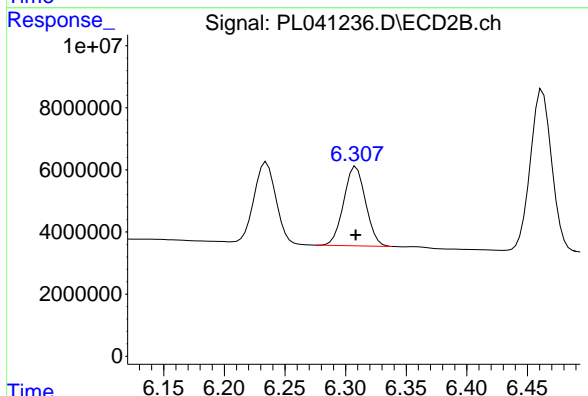


#10 trans-Chlordane
 R.T.: 6.235 min
 Delta R.T.: 0.000 min
 Response: 32189660
 Conc: 9.89 ng/ml

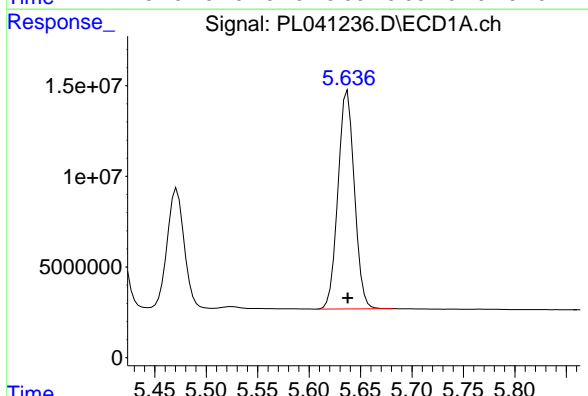


#11 cis-Chlordane
 R.T.: 5.471 min
 Delta R.T.: 0.000 min
 Response: 76309453
 Conc: 10.04 ng/ml

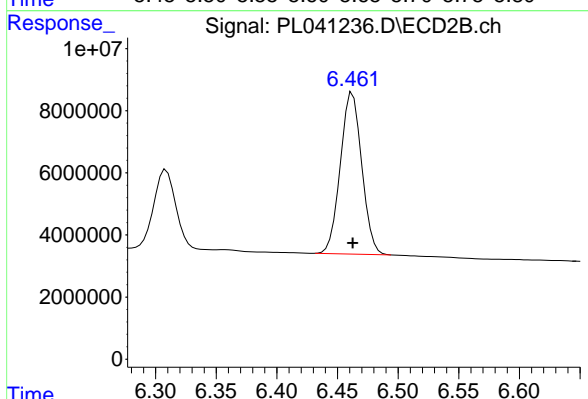
Instrument :
 ECD_L
 ClientSampled :



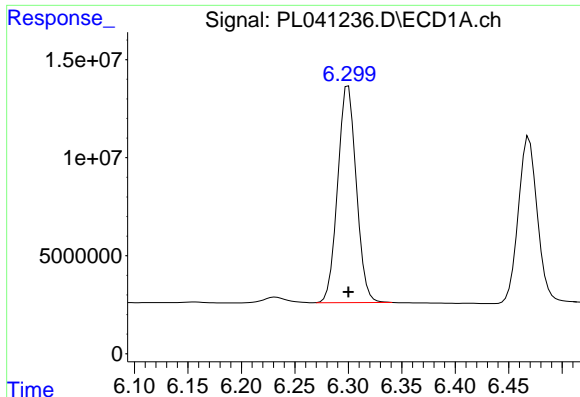
#11 cis-Chlordane
 R.T.: 6.309 min
 Delta R.T.: 0.000 min
 Response: 31997290
 Conc: 9.98 ng/ml



#12 4,4'-DDE
 R.T.: 5.637 min
 Delta R.T.: 0.000 min
 Response: 133571128
 Conc: 19.00 ng/ml



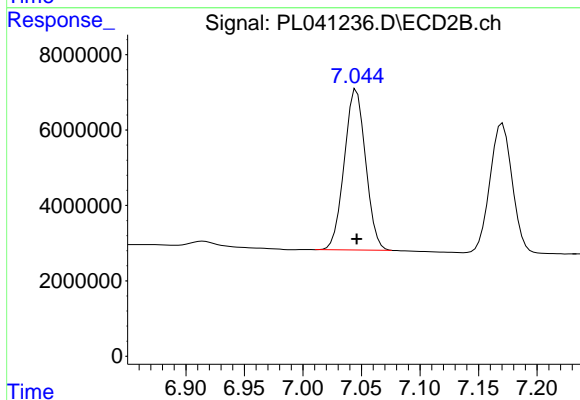
#12 4,4'-DDE
 R.T.: 6.462 min
 Delta R.T.: 0.000 min
 Response: 63845766
 Conc: 19.72 ng/ml



#15 Endosulfan II

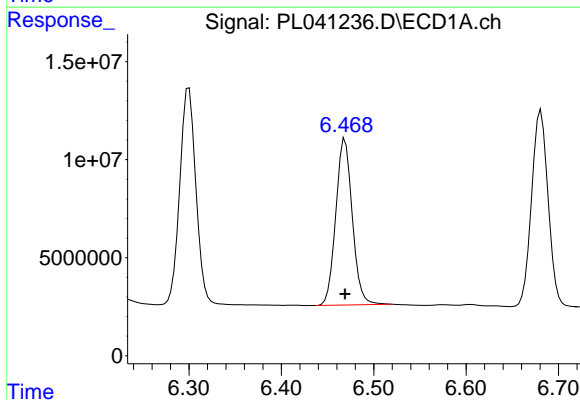
R.T.: 6.300 min
Delta R.T.: 0.000 min
Response: 133890880
Conc: 19.87 ng/ml

Instrument :
ECD_L
ClientSampleId :



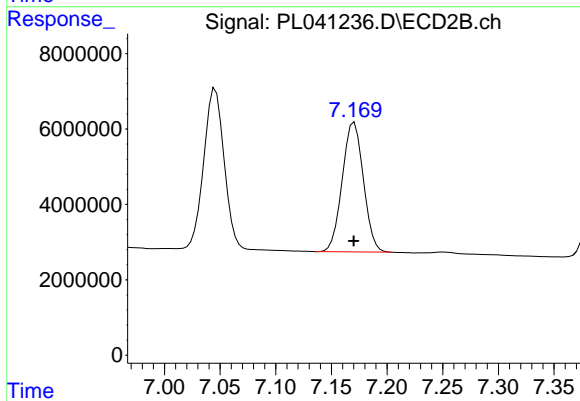
#15 Endosulfan II

R.T.: 7.046 min
Delta R.T.: 0.000 min
Response: 54040319
Conc: 20.00 ng/ml



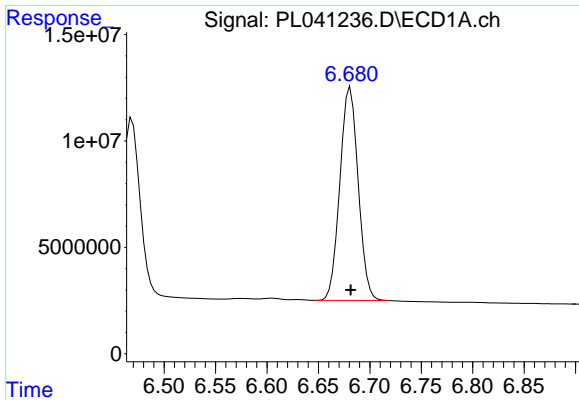
#18 Endrin aldehyde

R.T.: 6.469 min
Delta R.T.: 0.000 min
Response: 105469973
Conc: 20.13 ng/ml



#18 Endrin aldehyde

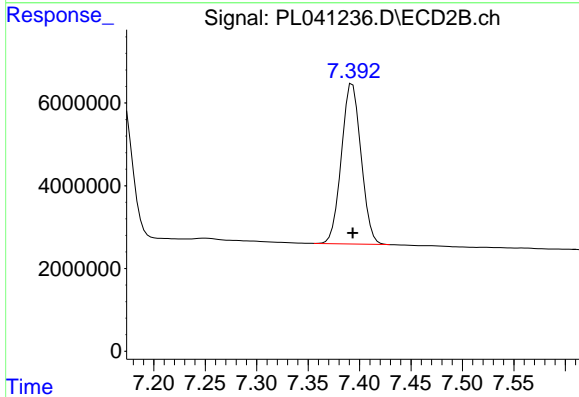
R.T.: 7.171 min
Delta R.T.: 0.000 min
Response: 45452778
Conc: 20.29 ng/ml



#19 Endosulfan Sulfate

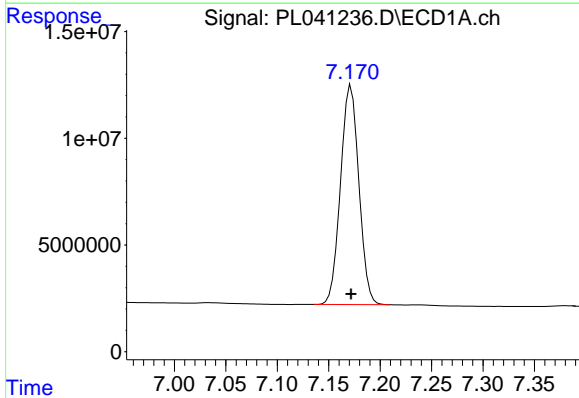
R.T.: 6.681 min
 Delta R.T.: 0.000 min
 Response: 124285932
 Conc: 19.92 ng/ml

Instrument :
 ECD_L
 ClientSampled :



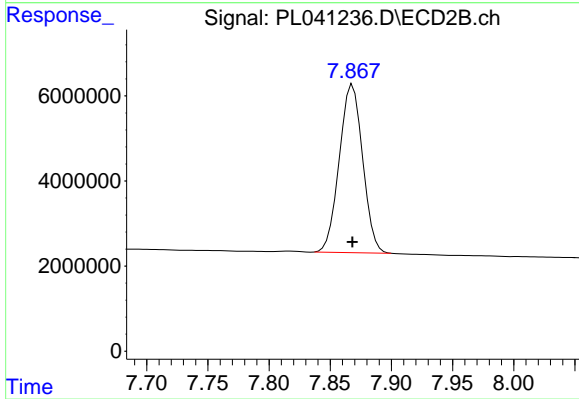
#19 Endosulfan Sulfate

R.T.: 7.393 min
 Delta R.T.: 0.000 min
 Response: 51473190
 Conc: 20.20 ng/ml



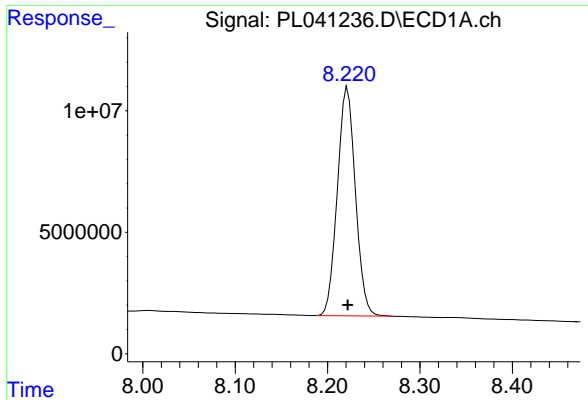
#21 Endrin ketone

R.T.: 7.172 min
 Delta R.T.: 0.000 min
 Response: 127684772
 Conc: 19.53 ng/ml



#21 Endrin ketone

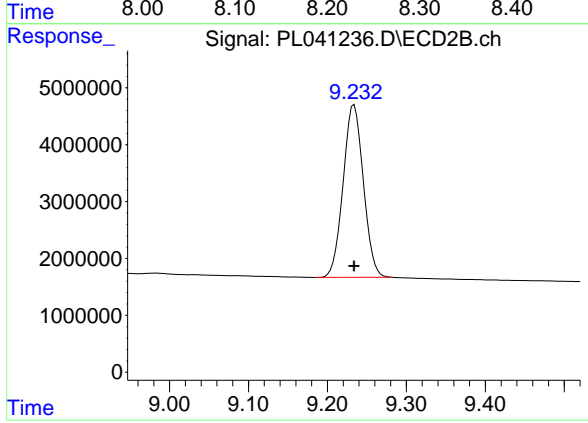
R.T.: 7.868 min
 Delta R.T.: 0.000 min
 Response: 52515676
 Conc: 19.94 ng/ml



#27 Decachlorobiphenyl

R.T.: 8.222 min
Delta R.T.: 0.000 min
Response: 127854824
Conc: 21.21 ng/ml

Instrument :
ECD_L
ClientSampleId :



#27 Decachlorobiphenyl

R.T.: 9.234 min
Delta R.T.: 0.000 min
Response: 54026706
Conc: 21.19 ng/ml