

Data Path : Z:\pestpcbsrv\HPCHEM1\ECD_L\Data\PL102318\
 Data File : PL041228.D
 Signal(s) : Signal #1: ECD1A.ch Signal #2: ECD2B.ch
 Acq On : 23 Oct 2018 10:59
 Operator : AJ\SJ
 Sample : TOXAPH101
 Misc :
 ALS Vial : 4 Sample Multiplier: 1

Instrument :
 ECD_L
 ClientSampleId :
 TOXAPH101

Integration File signal 1: autoint1.e
 Integration File signal 2: autoint2.e
 Quant Time: Oct 23 13:16:22 2018
 Quant Method : Z:\pestpcbsrv\HPCHEM1\ECD_L\methods\PL102318CLP.M
 Quant Title : GC Extractables
 QLast Update : Tue Oct 23 13:15:17 2018
 Response via : Initial Calibration
 Integrator: ChemStation

Volume Inj. : 1 µl
 Signal #1 Phase : ZB-MR2 Signal #2 Phase: ZB-MR1
 Signal #1 Info : 30M x 0.32mm x0.2 Signal #2 Info : 30M x 0.32mm x 0.50µm

Compound	RT#1	RT#2	Resp#1	Resp#2	ng/ml	ng/ml

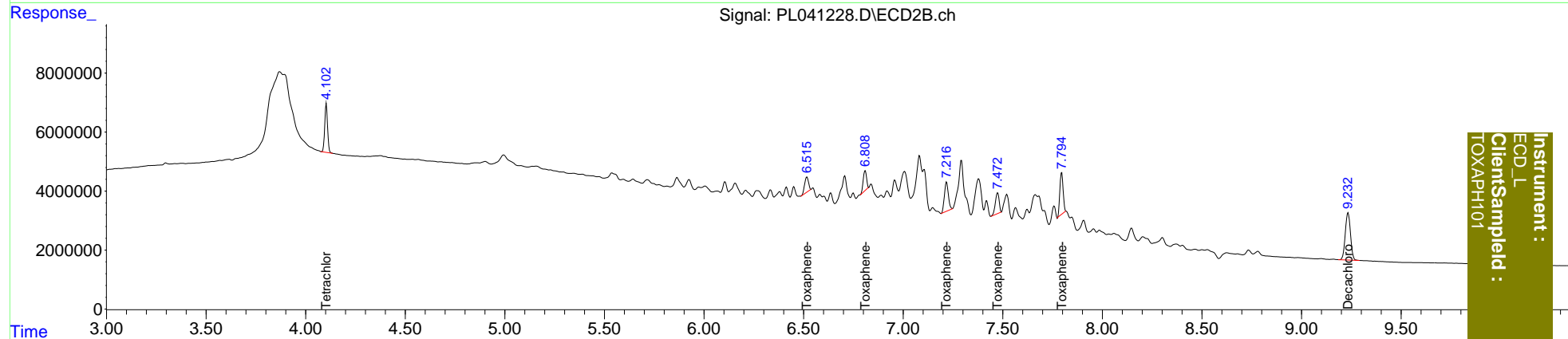
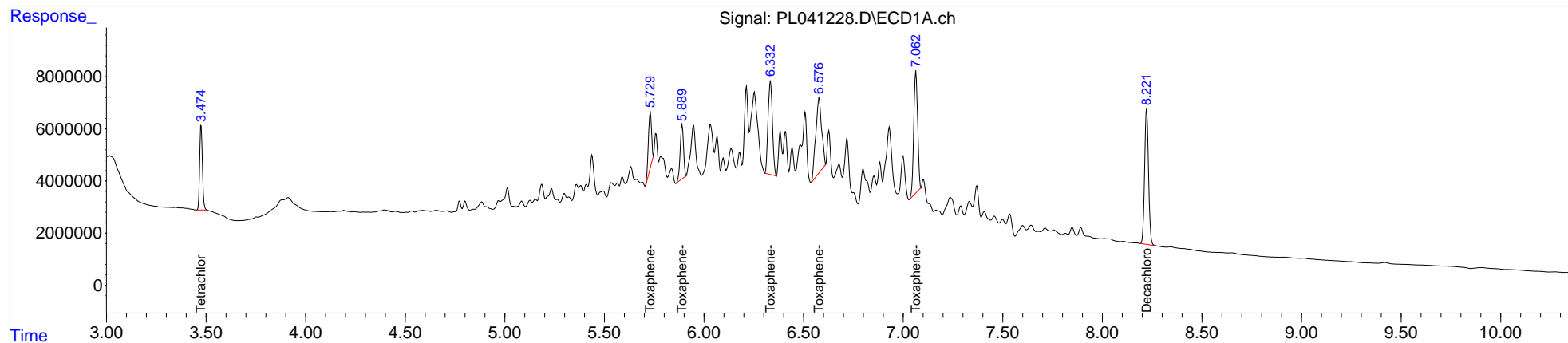
System Monitoring Compounds						
1) SA Tetrachlo...	3.475	4.104	31431021	16499808	4.838	5.040
27) SA Decachlor...	8.222	9.233	70988972	29122359	10.850	10.473
Target Compounds						
22) Toxaphene-1	5.730	6.516	25026929	7307681	479.971	517.222
23) Toxaphene-2	5.890	6.809	24614233	8204574	471.174	483.965
24) Toxaphene-3	6.333	7.218	54299388	13888256	442.598	502.732
25) Toxaphene-4	6.578	7.474	60131296	9503625	446.541	509.866
26) Toxaphene-5	7.063	7.796	64033648	16257513	467.361	494.305

(f)=RT Delta > 1/2 Window (#)=Amounts differ by > 25% (m)=manual int.

Data Path : Z:\pestpcbsrv\HPCHEM1\ECD_L\Data\PL102318\
 Data File : PL041228.D
 Signal(s) : Signal #1: ECD1A.ch Signal #2: ECD2B.ch
 Acq On : 23 Oct 2018 10:59
 Operator : AJ\SJ
 Sample : TOXAPH101
 Misc :
 ALS Vial : 4 Sample Multiplier: 1

Integration File signal 1: autoint1.e
 Integration File signal 2: autoint2.e
 Quant Time: Oct 23 13:16:22 2018
 Quant Method : Z:\pestpcbsrv\HPCHEM1\ECD_L\methods\PL102318CLP.M
 Quant Title : GC Extractables
 QLast Update : Tue Oct 23 13:15:17 2018
 Response via : Initial Calibration
 Integrator: ChemStation

Volume Inj. : 1 µl
 Signal #1 Phase : ZB-MR2 Signal #2 Phase: ZB-MR1
 Signal #1 Info : 30M x 0.32mm x0.2 Signal #2 Info : 30M x 0.32mm x 0.50µm



Instrument :
 ECD_L
 ClientSampleId :
 TOXAPH101