

Data Path : Z:\pestpcbsrv\HPCHEM1\ECD_L\Data\PL102318\
 Data File : PL041259.D
 Signal(s) : Signal #1: ECD1A.ch Signal #2: ECD2B.ch
 Acq On : 23 Oct 2018 18:16
 Operator : AJ\SJ
 Sample : MDL-W-06
 Misc :
 ALS Vial : 18 Sample Multiplier: 1

Instrument :
 ECD_L
 ClientSampled :
 MDL-W-06

Manual Integrations
 APPROVED

Sohil
 10/25/2018 8:36:35 AM

Integration File signal 1: autoint1.e
 Integration File signal 2: autoint2.e
 Quant Time: Oct 24 07:57:24 2018
 Quant Method : Z:\pestpcbsrv\HPCHEM1\ECD_L\methods\PL102318CLP.M
 Quant Title : GC Extractables
 QLast Update : Wed Oct 24 01:06:36 2018
 Response via : Initial Calibration
 Integrator: ChemStation

Volume Inj. : 1 µl
 Signal #1 Phase : ZB-MR2 Signal #2 Phase: ZB-MR1
 Signal #1 Info : 30M x 0.32mm x0.2 Signal #2 Info : 30M x 0.32mm x 0.50µm

	Compound	RT#1	RT#2	Resp#1	Resp#2	ng/ml	ng/ml

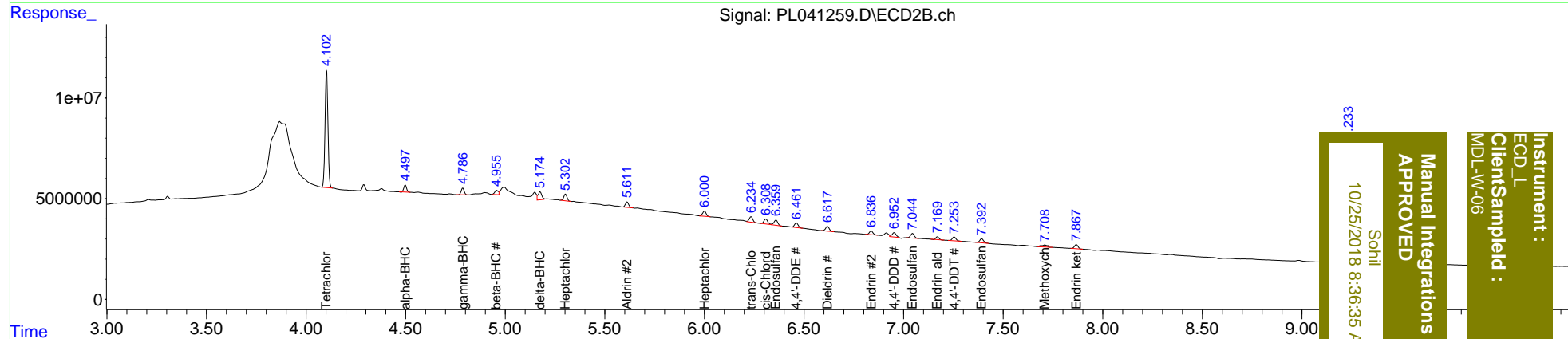
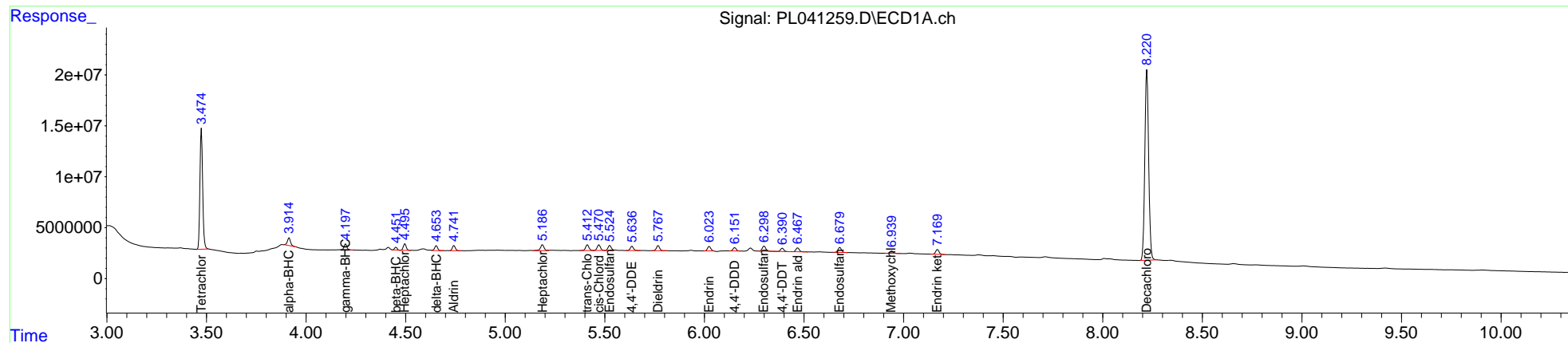
System Monitoring Compounds							
1)	SA Tetrachlo...	3.475	4.104	112.9E6	59472119	17.665	18.404
27)	SA Decachlor...	8.222	9.234	250.9E6	106.7E6	39.105	39.775
Target Compounds							
2)	A alpha-BHC	3.915	4.499	8193209	3346078	0.874	0.726
3)	MA gamma-BHC...	4.199	4.787	5769245	3475936	0.664	0.805
4)	MA Heptachlor	4.497	5.303	6547699	3742859	0.716	0.877
5)	MB Aldrin	4.743	5.612	5303428	3022122	0.677	0.826
6)	B beta-BHC	4.452	4.957	2451227	2558449	0.646	1.270 #
7)	B delta-BHC	4.654	5.174	5054513	5083265	0.634	1.249m#
8)	B Heptachlo...	5.187	6.000	7500998	3191496	0.963	0.927m
9)	A Endosulfan I	5.524	6.360	5788018	3292429	0.776m	1.022 #
10)	B trans-Chl...	5.413	6.235	6632521	2811214	0.860	0.868
11)	B cis-Chlor...	5.471	6.309	6506545	3438196	0.856	1.086 #
12)	B 4,4'-DDE	5.637	6.463	4804779	2813908	0.694	0.879 #
13)	MA Dieldrin	5.768	6.618	5723371	2999429	0.691	0.890 #
14)	MA Endrin	6.023	6.838	5182518	2288465	0.736m	0.853
15)	B Endosulfa...	6.300	7.045	6218735	2951152	0.932	1.099
16)	A 4,4'-DDD	6.151	6.952	3828488	3176883	0.650m	1.278m#
17)	MA 4,4'-DDT	6.392	7.255	3690304	2432416	0.591	0.921 #
18)	B Endrin al...	6.468	7.170	4503875	1380044	0.864	0.620 #
19)	B Endosulfa...	6.680	7.393	6138780	2695796	0.993	1.065
20)	A Methoxychlor	6.940	7.710	2789619	1271987	0.808	0.918
21)	B Endrin ke...	7.170	7.868	5634293	2553518	0.871	0.977

(f)=RT Delta > 1/2 Window (#)=Amounts differ by > 25% (m)=manual int.

Data Path : Z:\pestpcbsrv\HPCHEM1\ECD_L\Data\PL102318\
 Data File : PL041259.D
 Signal(s) : Signal #1: ECD1A.ch Signal #2: ECD2B.ch
 Acq On : 23 Oct 2018 18:16
 Operator : AJ\SJ
 Sample : MDL-W-06
 Misc :
 ALS Vial : 18 Sample Multiplier: 1

Integration File signal 1: autoint1.e
 Integration File signal 2: autoint2.e
 Quant Time: Oct 24 07:57:24 2018
 Quant Method : Z:\pestpcbsrv\HPCHEM1\ECD_L\methods\PL102318CLP.M
 Quant Title : GC Extractables
 QLast Update : Wed Oct 24 01:06:36 2018
 Response via : Initial Calibration
 Integrator: ChemStation

Volume Inj. : 1 µl
 Signal #1 Phase : ZB-MR2 Signal #2 Phase: ZB-MR1
 Signal #1 Info : 30M x 0.32mm x0.2 Signal #2 Info : 30M x 0.32mm x 0.50µm



237

Instrument :
 ECD_L
 Client Sample Id :
 MDL-W-06

Manual Integrations
 APPROVED
 Sohli
 10/25/2018 8:36:35 AM