

Data Path : Z:\pestpcbsrv\HPCHEM1\ECD_L\Data\PL102319\
 Data File : PL053588.D
 Signal(s) : Signal #1: ECD1A.ch Signal #2: ECD2B.ch
 Acq On : 23 Oct 2019 09:07
 Operator : SG\AJ
 Sample : I.BLK
 Misc :
 ALS Vial : 2 Sample Multiplier: 1

Instrument :
 ECD_L
 ClientSampleId :

Integration File signal 1: autoint1.e
 Integration File signal 2: autoint2.e
 Quant Time: Oct 23 22:33:17 2019
 Quant Method : Z:\pestpcbsrv\HPCHEM1\ECD_L\methods\PL101919.M
 Quant Title : GC Extractables
 QLast Update : Fri Oct 18 13:56:08 2019
 Response via : Initial Calibration
 Integrator: ChemStation

Volume Inj. : 1 µl
 Signal #1 Phase : ZB-MR2 Signal #2 Phase: ZB-MR1
 Signal #1 Info : 30M x 0.32mm x0.2 Signal #2 Info : 30M x 0.32mm x0.5µm

	Compound	RT#1	RT#2	Resp#1	Resp#2	ng/ml	ng/ml

System Monitoring Compounds							
1)	SA Tetrachlo...	3.545	4.045	249.0E6	57700225	22.970	23.058
28)	SA Decachlor...	8.334	9.124	201.0E6	40063752	20.482	14.227 #
Target Compounds							
5)	MB Aldrin	0.000	5.538	0	2566502	N.D.	0.861 #
8)	B Heptachlo...	0.000	5.918	0	13620528	N.D.	4.670 #
11)	B alpha-Chl...	5.560	0.000	7669497	0	0.577	N.D. #
12)	B 4,4'-DDE	5.750f	0.000	2778377	0	0.234	N.D. #
20)	A Methoxychlor	7.047	0.000	4191785	0	0.850	N.D. #
22)	Mirex	0.000	8.261f	0	1345601	N.D.	0.665 #
24)	Chlordane-2	0.000	5.538f	0	2566502	N.D.	26.130 #
26)	Chlordane-4	5.560	0.000	7669497	0	8.181	N.D. #

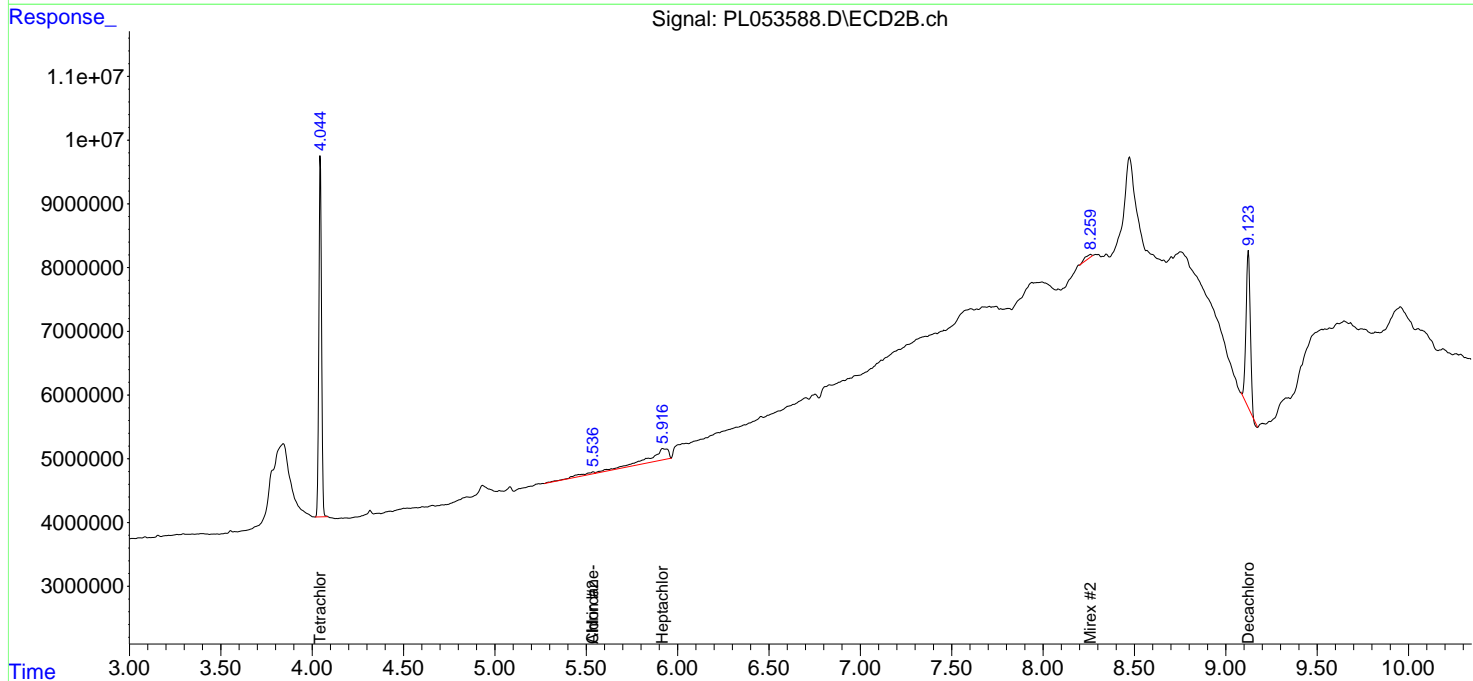
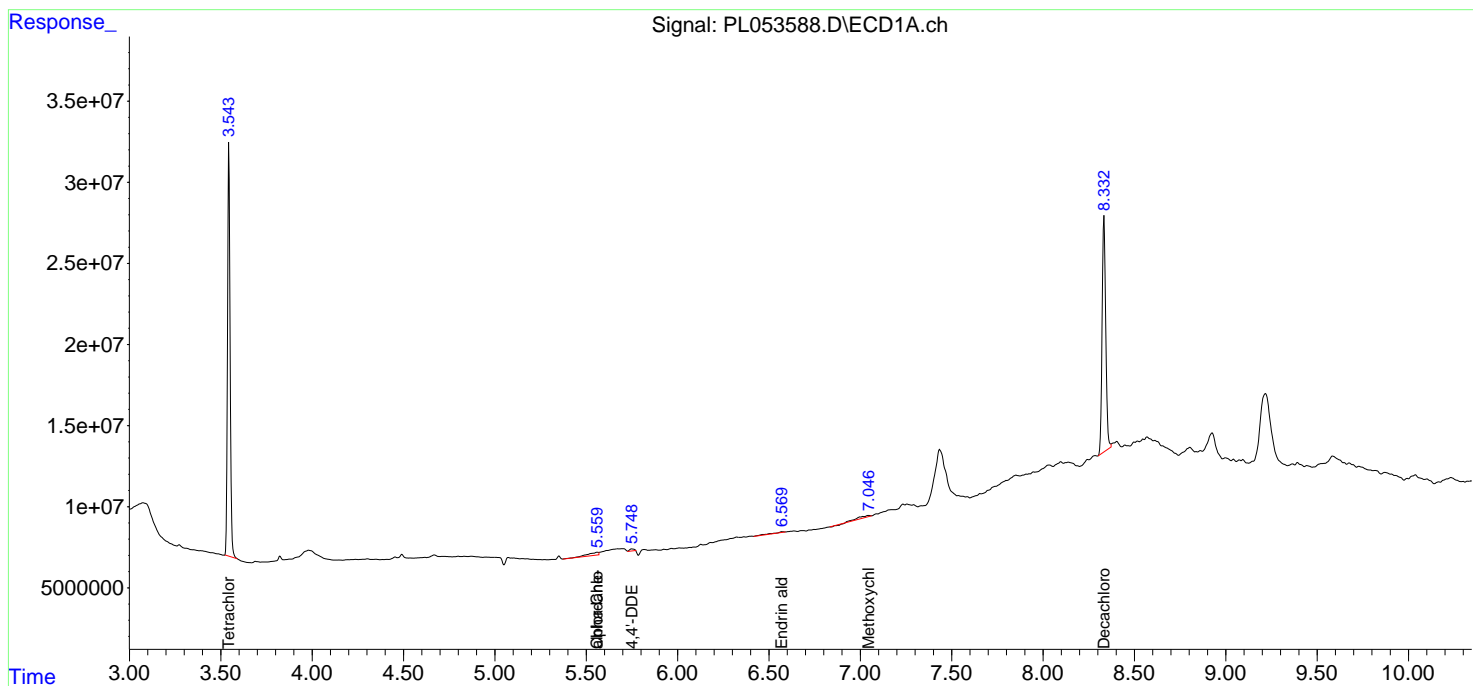
(f)=RT Delta > 1/2 Window (#)=Amounts differ by > 25% (m)=manual int.

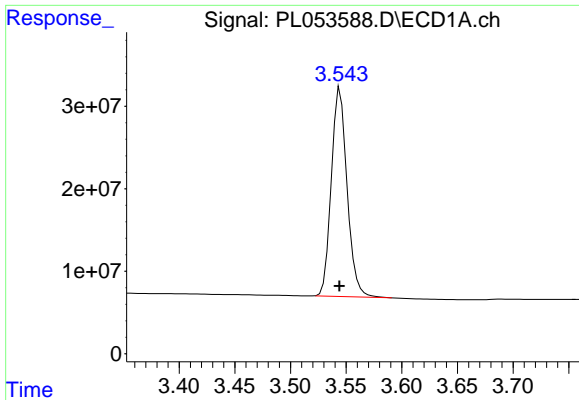
Data Path : Z:\pestpcbsrv\HPCHEM1\ECD_L\Data\PL102319\
 Data File : PL053588.D
 Signal(s) : Signal #1: ECD1A.ch Signal #2: ECD2B.ch
 Acq On : 23 Oct 2019 09:07
 Operator : SG\AJ
 Sample : I.BLK
 Misc :
 ALS Vial : 2 Sample Multiplier: 1

Instrument :
 ECD_L
 ClientSampled :

Integration File signal 1: autoint1.e
 Integration File signal 2: autoint2.e
 Quant Time: Oct 23 22:33:17 2019
 Quant Method : Z:\pestpcbsrv\HPCHEM1\ECD_L\methods\PL101919.M
 Quant Title : GC Extractables
 QLast Update : Fri Oct 18 13:56:08 2019
 Response via : Initial Calibration
 Integrator: ChemStation

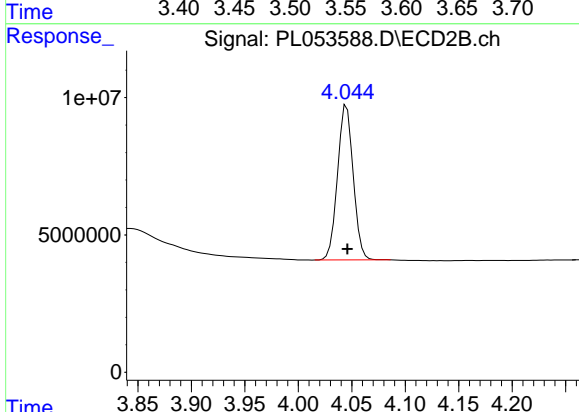
Volume Inj. : 1 µl
 Signal #1 Phase : ZB-MR2 Signal #2 Phase: ZB-MR1
 Signal #1 Info : 30M x 0.32mm x0.2 Signal #2 Info : 30M x 0.32mm x0.5µm



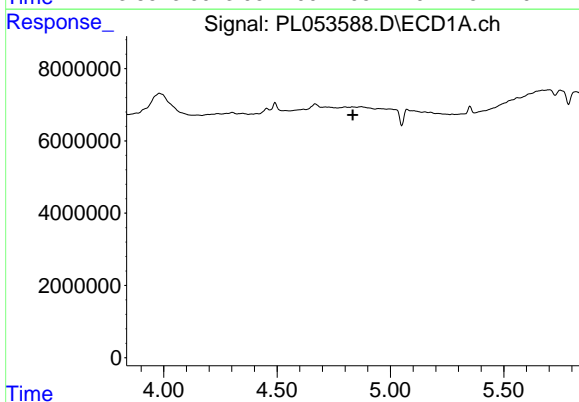


#1 Tetrachloro-m-xylene
 R.T.: 3.545 min
 Delta R.T.: 0.000 min
 Response: 248984234
 Conc: 22.97 ng/ml

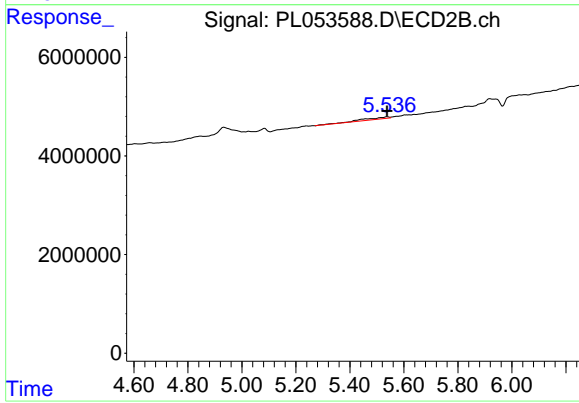
Instrument :
 ECD_L
 ClientSampled :



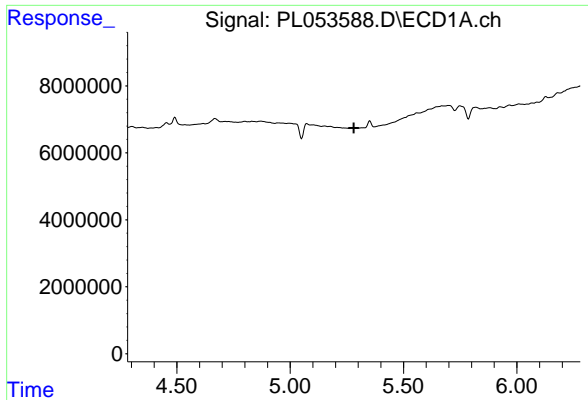
#1 Tetrachloro-m-xylene
 R.T.: 4.045 min
 Delta R.T.: 0.000 min
 Response: 57700225
 Conc: 23.06 ng/ml



#5 Aldrin
 R.T.: 0.000 min
 Exp R.T. : 4.834 min
 Response: 0
 Conc: N.D.

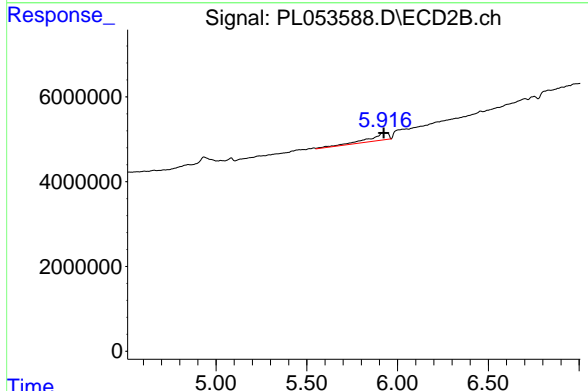


#5 Aldrin
 R.T.: 5.538 min
 Delta R.T.: 0.000 min
 Response: 2566502
 Conc: 0.86 ng/ml

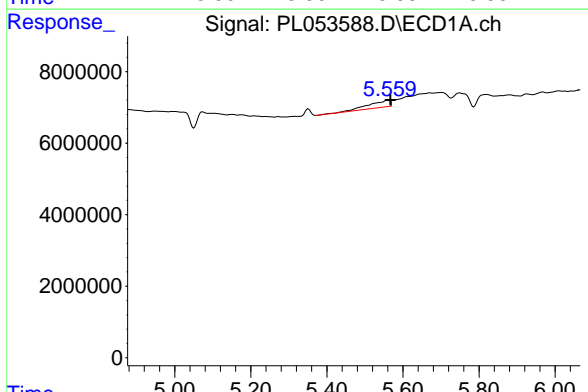


#8 Heptachlor epoxide
 R.T.: 0.000 min
 Exp R.T.: 5.280 min
 Response: 0
 Conc: N.D.

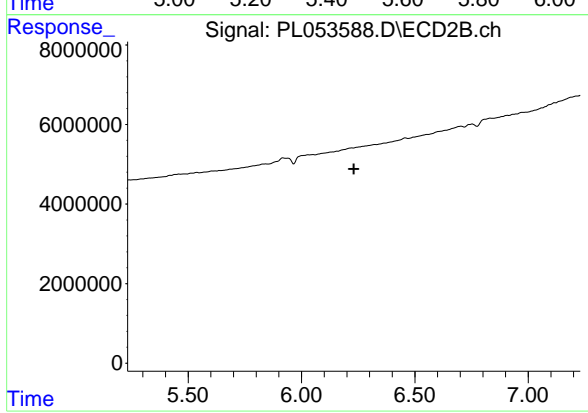
Instrument :
 ECD_L
 ClientSampleId :



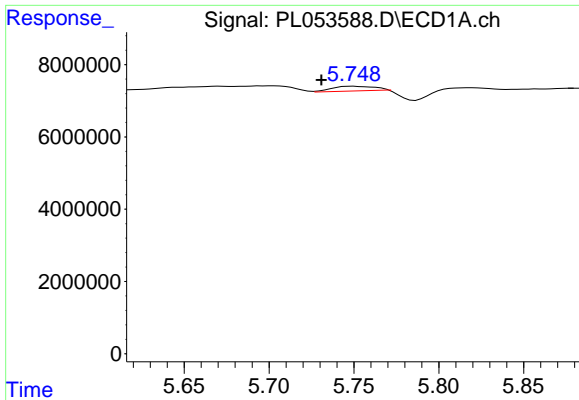
#8 Heptachlor epoxide
 R.T.: 5.918 min
 Delta R.T.: -0.007 min
 Response: 13620528
 Conc: 4.67 ng/ml



#11 alpha-Chlordane
 R.T.: 5.560 min
 Delta R.T.: -0.008 min
 Response: 7669497
 Conc: 0.58 ng/ml

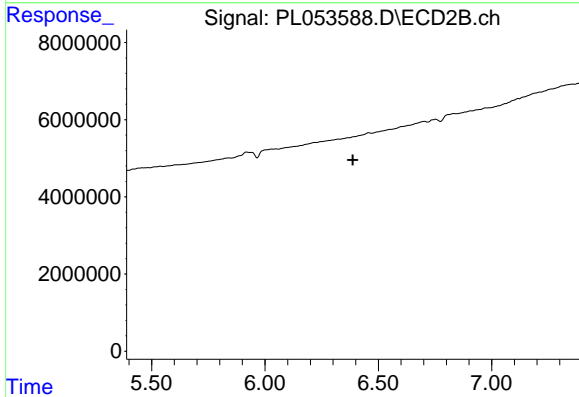


#11 alpha-Chlordane
 R.T.: 0.000 min
 Exp R.T.: 6.231 min
 Response: 0
 Conc: N.D.

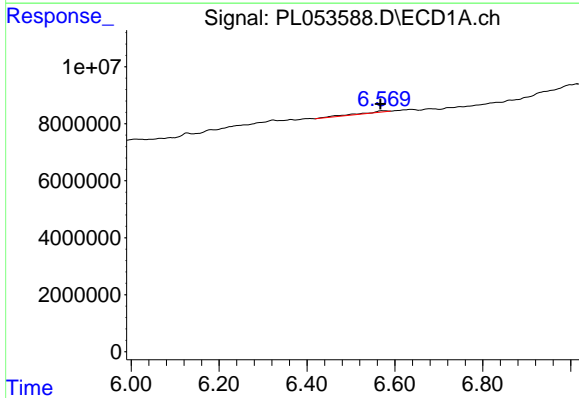


#12 4,4'-DDE
 R.T.: 5.750 min
 Delta R.T.: 0.019 min
 Response: 2778377
 Conc: 0.23 ng/ml

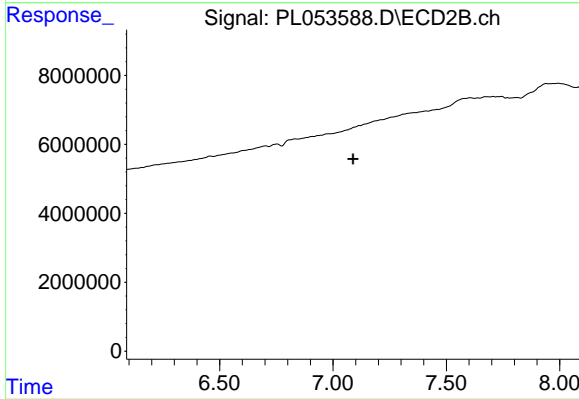
Instrument :
 ECD_L
 ClientSampleId :



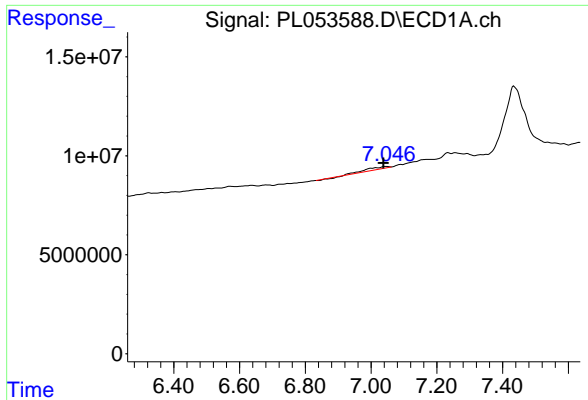
#12 4,4'-DDE
 R.T.: 0.000 min
 Exp R.T. : 6.387 min
 Response: 0
 Conc: N.D.



#18 Endrin aldehyde
 R.T.: 6.571 min
 Delta R.T.: 0.004 min
 Response: 2168305
 Conc: 0.24 ng/ml

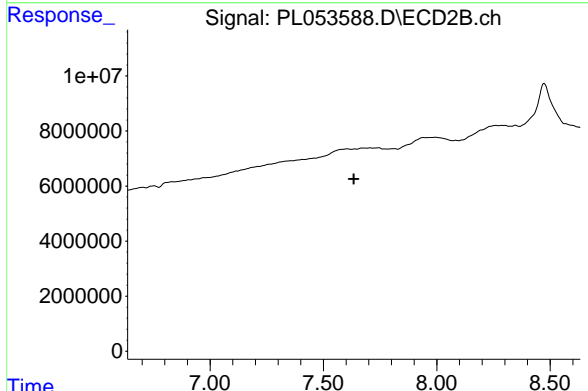


#18 Endrin aldehyde
 R.T.: 7.116 min
 Delta R.T.: 0.027 min
 Response: -2300250
 Conc: N.D.

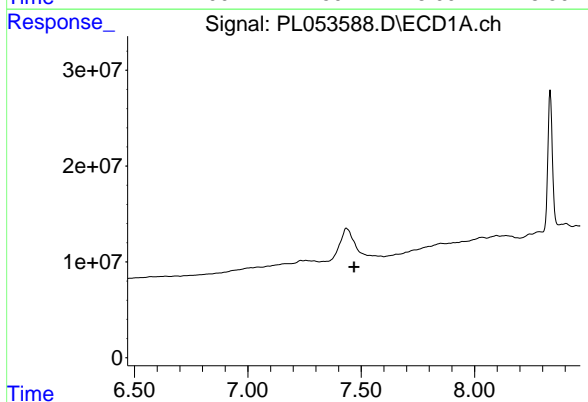


#20 Methoxychlor
 R.T.: 7.047 min
 Delta R.T.: 0.010 min
 Response: 4191785
 Conc: 0.85 ng/ml

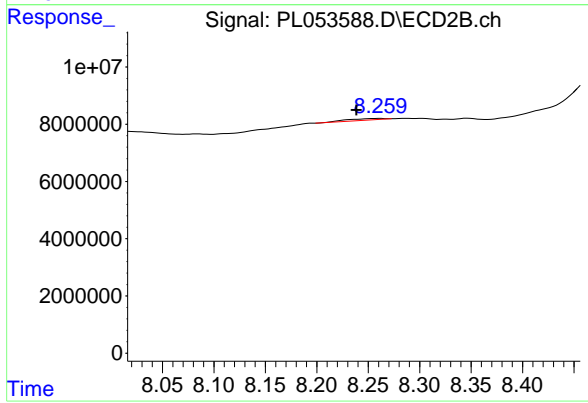
Instrument :
 ECD_L
 ClientSampleId :



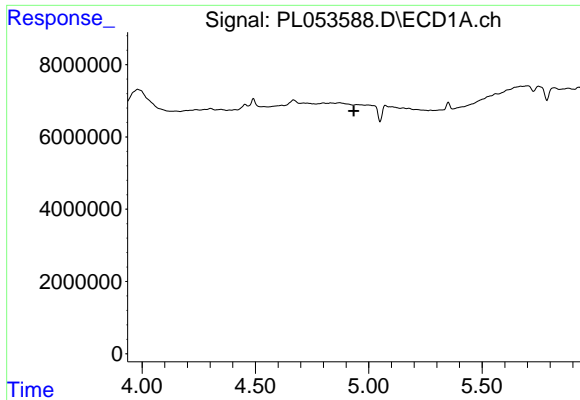
#20 Methoxychlor
 R.T.: 0.000 min
 Exp R.T. : 7.633 min
 Response: 0
 Conc: N.D.



#22 Mirex
 R.T.: 0.000 min
 Exp R.T. : 7.469 min
 Response: 0
 Conc: N.D.

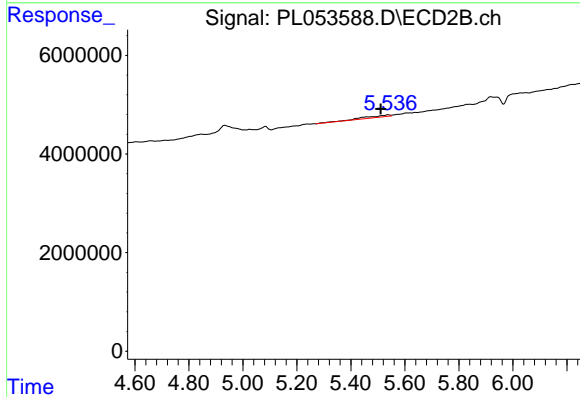


#22 Mirex
 R.T.: 8.261 min
 Delta R.T.: 0.023 min
 Response: 1345601
 Conc: 0.67 ng/ml

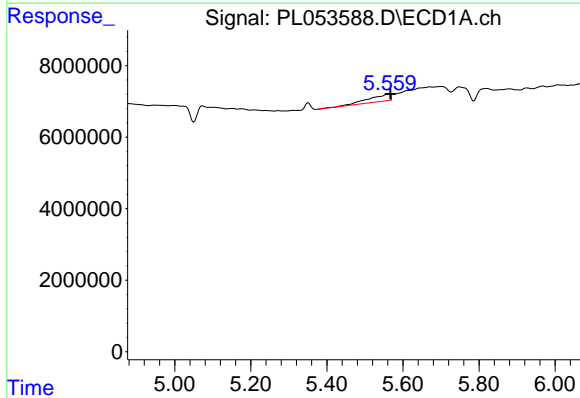


#24 Chlordane-2
 R.T.: 0.000 min
 Exp R.T.: 4.934 min
 Response: 0
 Conc: N.D.

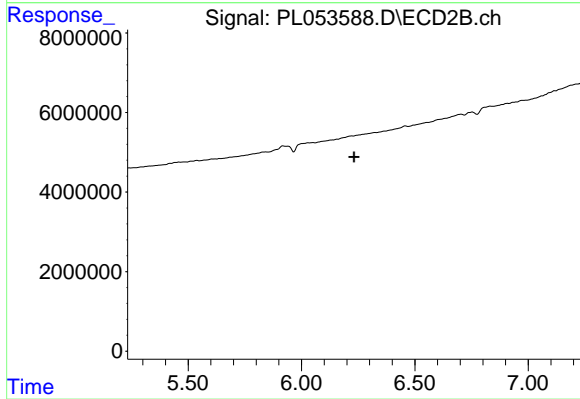
Instrument :
 ECD_L
 ClientSampleId :



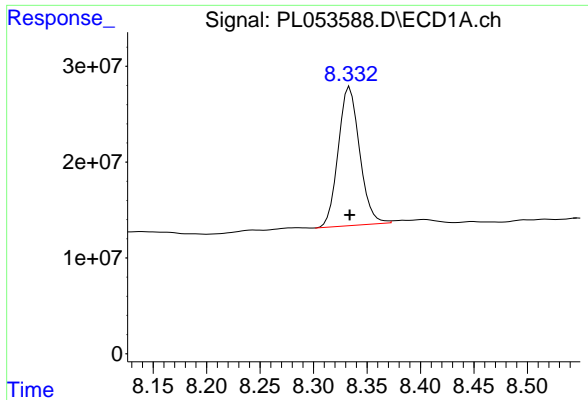
#24 Chlordane-2
 R.T.: 5.538 min
 Delta R.T.: 0.028 min
 Response: 2566502
 Conc: 26.13 ng/ml



#26 Chlordane-4
 R.T.: 5.560 min
 Delta R.T.: -0.007 min
 Response: 7669497
 Conc: 8.18 ng/ml



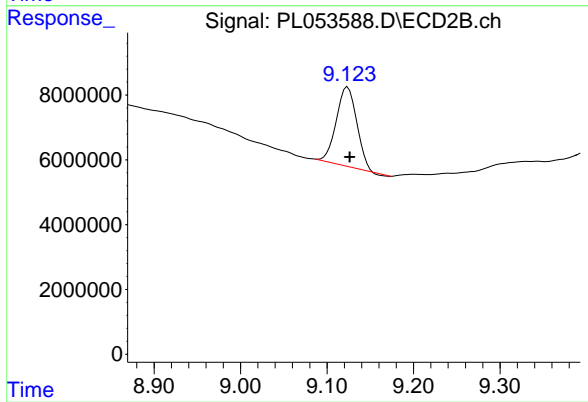
#26 Chlordane-4
 R.T.: 0.000 min
 Exp R.T.: 6.232 min
 Response: 0
 Conc: N.D.



#28 Decachlorobiphenyl

R.T.: 8.334 min
Delta R.T.: 0.000 min
Response: 200958489
Conc: 20.48 ng/ml

Instrument :
ECD_L
ClientSampleId :



#28 Decachlorobiphenyl

R.T.: 9.124 min
Delta R.T.: -0.002 min
Response: 40063752
Conc: 14.23 ng/ml