

Data Path : Z:\pestpcbsrv\HPCHEM1\ECD_L\Data\PL102319\
 Data File : PL053649.D
 Signal(s) : Signal #1: ECD1A.ch Signal #2: ECD2B.ch
 Acq On : 24 Oct 2019 02:30
 Operator : SG\AJ
 Sample : K5498-05
 Misc :
 ALS Vial : 53 Sample Multiplier: 1

Instrument :
 ECD_L
 ClientSampleId :

Integration File signal 1: autoint1.e
 Integration File signal 2: autoint2.e
 Quant Time: Oct 24 04:22:25 2019
 Quant Method : Z:\pestpcbsrv\HPCHEM1\ECD_L\methods\PL101919.M
 Quant Title : GC Extractables
 QLast Update : Fri Oct 18 13:56:08 2019
 Response via : Initial Calibration
 Integrator: ChemStation

Volume Inj. : 1 µl
 Signal #1 Phase : ZB-MR2 Signal #2 Phase: ZB-MR1
 Signal #1 Info : 30M x 0.32mm x0.2 Signal #2 Info : 30M x 0.32mm x0.5µm

	Compound	RT#1	RT#2	Resp#1	Resp#2	ng/ml	ng/ml

System Monitoring Compounds							
1)	SA Tetrachlo...	3.543	4.044	131.7E6	33462113	12.152	13.372
28)	SA Decachlor...	8.328	9.121	118.0E6	36582597	12.027	12.991
Target Compounds							
8)	B Heptachlo...	0.000	5.913	0	1877558	N.D.	0.644 #
10)	B gamma-Chl...	5.505	6.155	2145465	1704846	0.157	0.584 #
11)	B alpha-Chl...	0.000	6.230	0	2189580	N.D.	0.750 #
13)	MA Dieldrin	5.854	0.000	5528305	0	0.424	N.D. #
16)	A 4,4'-DDD	0.000	6.879	0	1169724	N.D.	0.561 #
17)	MA 4,4'-DDT	6.483	0.000	12610626	0	1.273	N.D. #
18)	B Endrin al...	6.577	0.000	3203824	0	0.349	N.D. #
19)	B Endosulfa...	6.772	0.000	4308201	0	0.424	N.D. #
20)	A Methoxychlor	7.018f	0.000	12940574	0	2.625	N.D. #
21)	B Endrin ke...	7.295f	0.000	6877042	0	0.639	N.D. #
22)	Mirex	0.000	8.260f	0	2417207	N.D.	1.195 #
24)	Chlordane-2	4.911f	0.000	1589645	0	4.126	N.D. #
25)	Chlordane-3	5.505	6.155	2145465	1704846	1.861	4.668 #
26)	Chlordane-4	0.000	6.230	0	2189580	N.D.	4.877 #
27)	Chlordane-5	6.436f	0.000	3941995	0	10.784	N.D. #

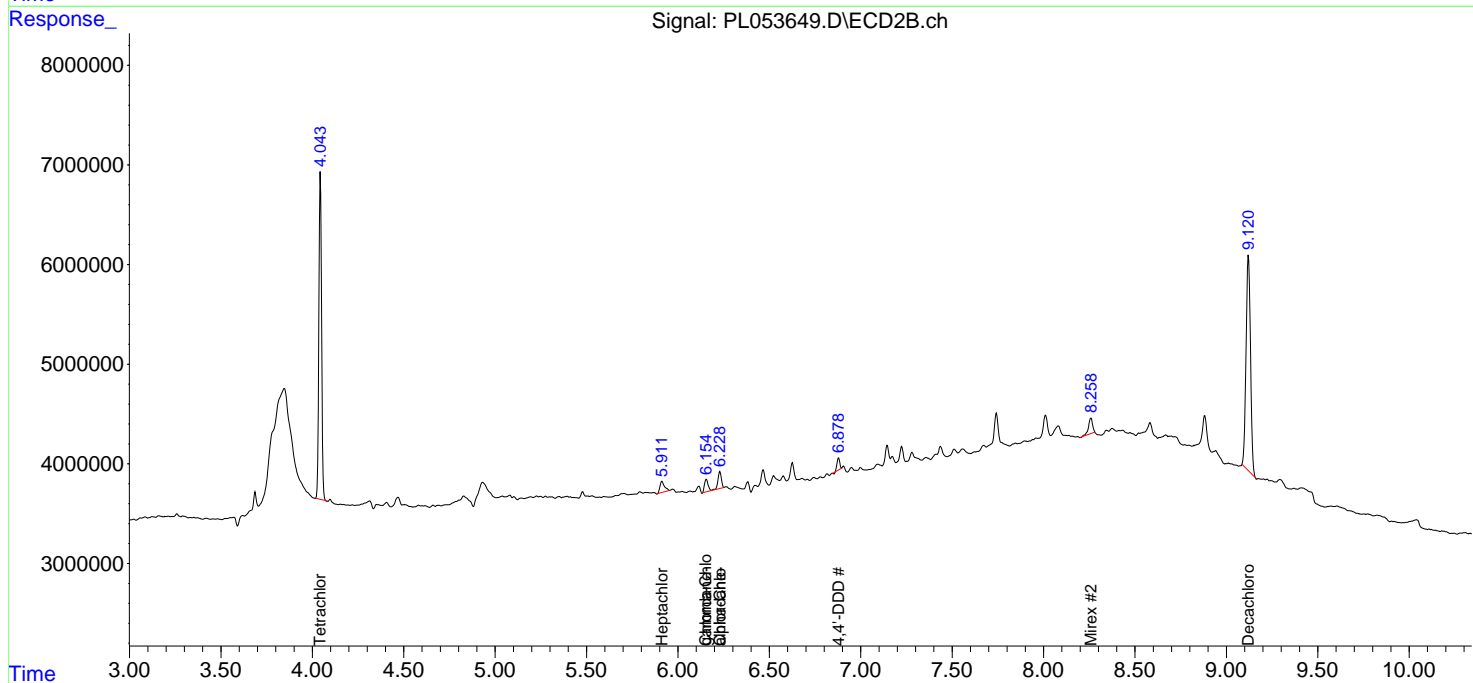
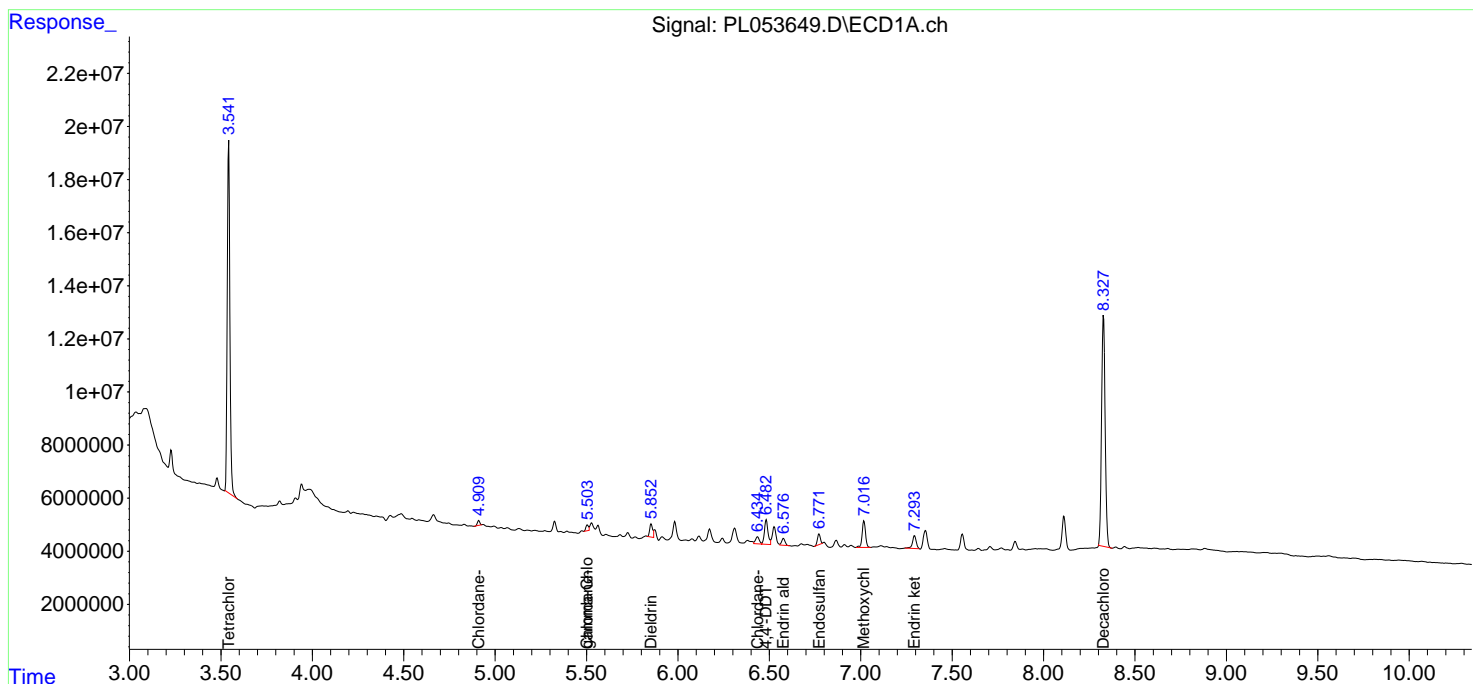
(f)=RT Delta > 1/2 Window (#)=Amounts differ by > 25% (m)=manual int.

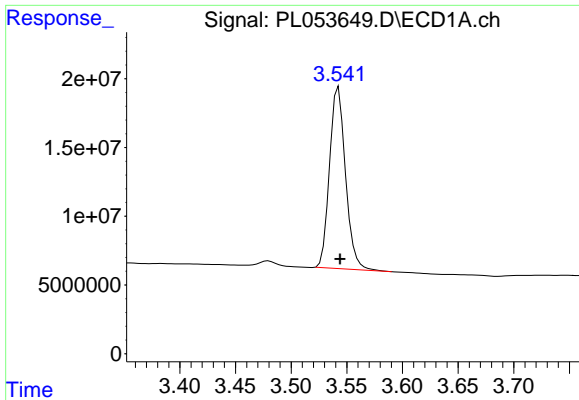
Data Path : Z:\pestpcbsrv\HPCHEM1\ECD_L\Data\PL102319\
 Data File : PL053649.D
 Signal(s) : Signal #1: ECD1A.ch Signal #2: ECD2B.ch
 Acq On : 24 Oct 2019 02:30
 Operator : SG\AJ
 Sample : K5498-05
 Misc :
 ALS Vial : 53 Sample Multiplier: 1

Instrument :
 ECD_L
 ClientSampled :

Integration File signal 1: autoint1.e
 Integration File signal 2: autoint2.e
 Quant Time: Oct 24 04:22:25 2019
 Quant Method : Z:\pestpcbsrv\HPCHEM1\ECD_L\methods\PL101919.M
 Quant Title : GC Extractables
 QLast Update : Fri Oct 18 13:56:08 2019
 Response via : Initial Calibration
 Integrator: ChemStation

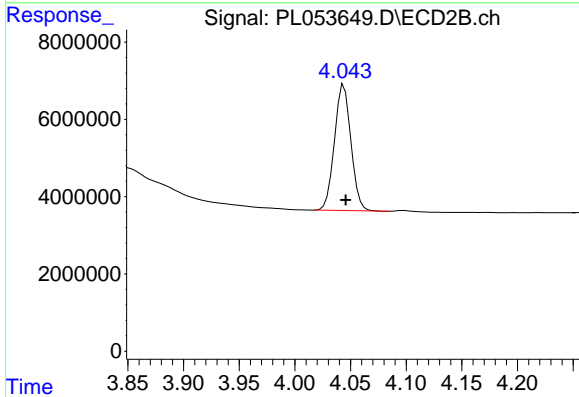
Volume Inj. : 1 µl
 Signal #1 Phase : ZB-MR2 Signal #2 Phase: ZB-MR1
 Signal #1 Info : 30M x 0.32mm x0.2 Signal #2 Info : 30M x 0.32mm x0.5µm



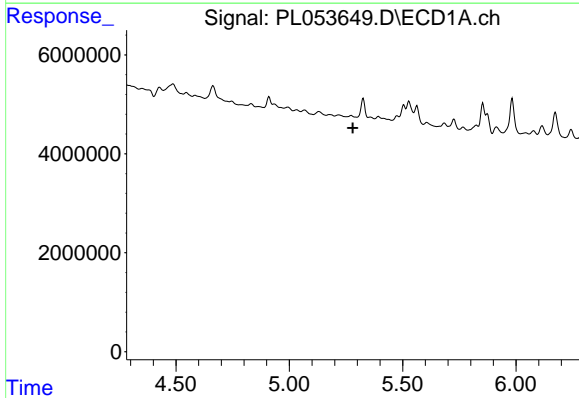


#1 Tetrachloro-m-xylene
 R.T.: 3.543 min
 Delta R.T.: -0.001 min
 Response: 131722420
 Conc: 12.15 ng/ml

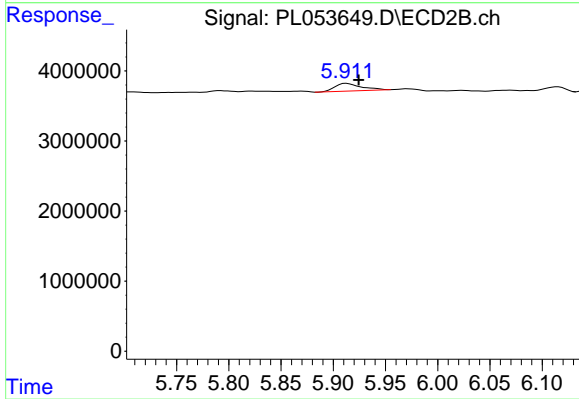
Instrument :
 ECD_L
 ClientSampleId :



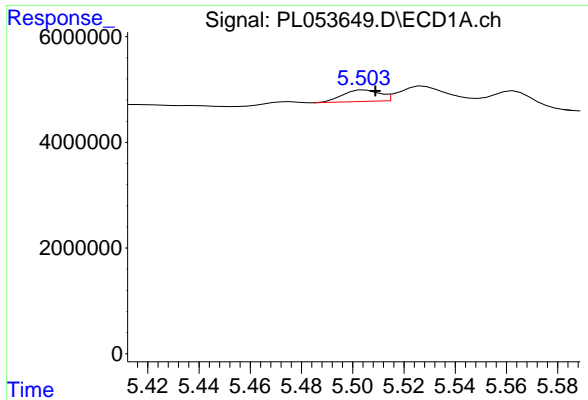
#1 Tetrachloro-m-xylene
 R.T.: 4.044 min
 Delta R.T.: -0.002 min
 Response: 33462113
 Conc: 13.37 ng/ml



#8 Heptachlor epoxide
 R.T.: 0.000 min
 Exp R.T. : 5.280 min
 Response: 0
 Conc: N.D.

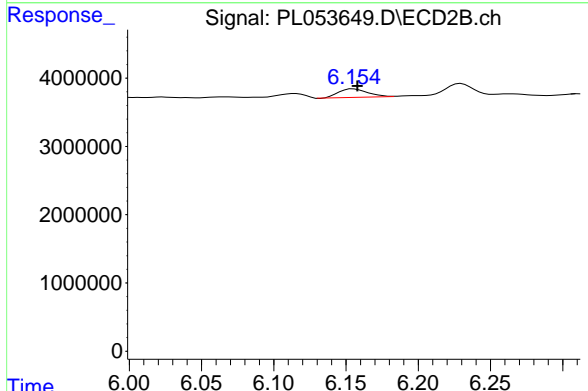


#8 Heptachlor epoxide
 R.T.: 5.913 min
 Delta R.T.: -0.012 min
 Response: 1877558
 Conc: 0.64 ng/ml

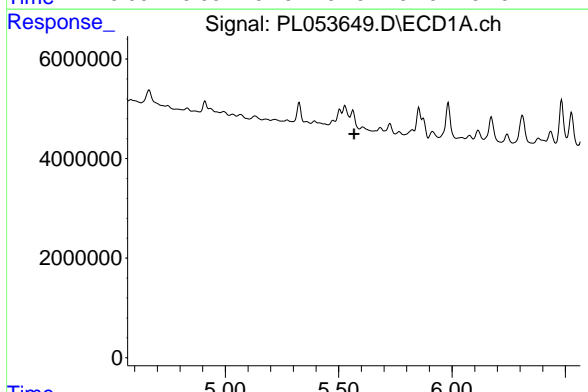


#10 gamma-Chlordane
 R.T.: 5.505 min
 Delta R.T.: -0.004 min
 Response: 2145465
 Conc: 0.16 ng/ml

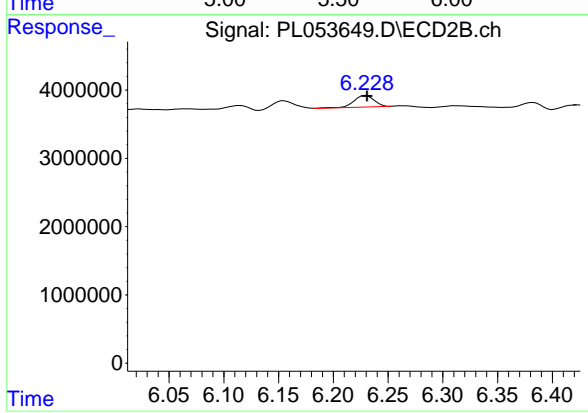
Instrument :
 ECD_L
 ClientSampled :



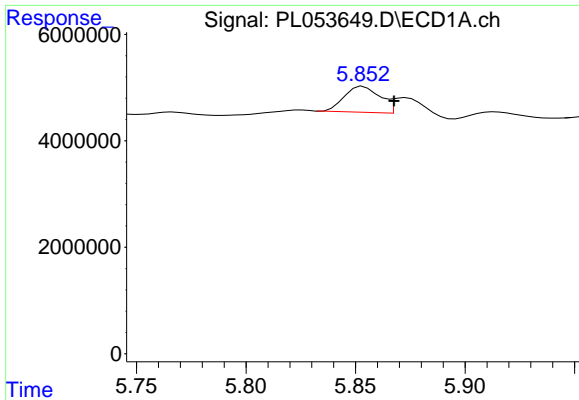
#10 gamma-Chlordane
 R.T.: 6.155 min
 Delta R.T.: -0.003 min
 Response: 1704846
 Conc: 0.58 ng/ml



#11 alpha-Chlordane
 R.T.: 0.000 min
 Exp R.T. : 5.568 min
 Response: 0
 Conc: N.D.

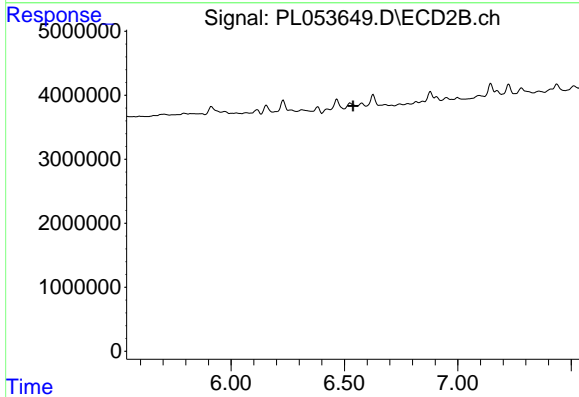


#11 alpha-Chlordane
 R.T.: 6.230 min
 Delta R.T.: -0.001 min
 Response: 2189580
 Conc: 0.75 ng/ml

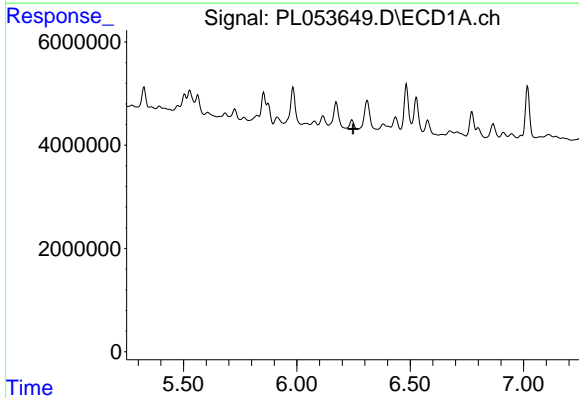


#13 Dieldrin
 R.T.: 5.854 min
 Delta R.T.: -0.014 min
 Response: 5528305
 Conc: 0.42 ng/ml

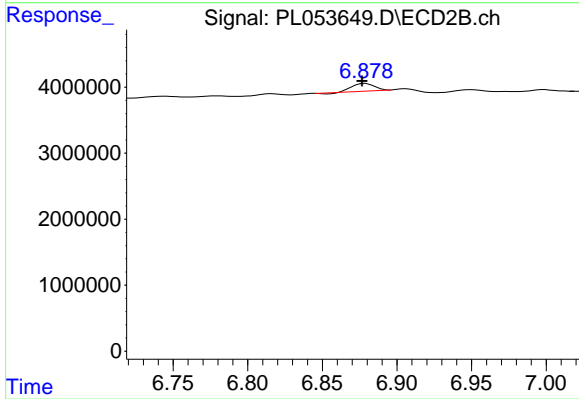
Instrument :
 ECD_L
 ClientSampled :



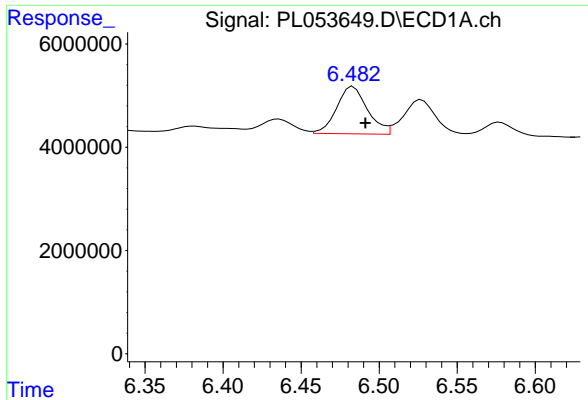
#13 Dieldrin
 R.T.: 0.000 min
 Exp R.T. : 6.538 min
 Response: 0
 Conc: N.D.



#16 4,4'-DDD
 R.T.: 0.000 min
 Exp R.T. : 6.248 min
 Response: 0
 Conc: N.D.

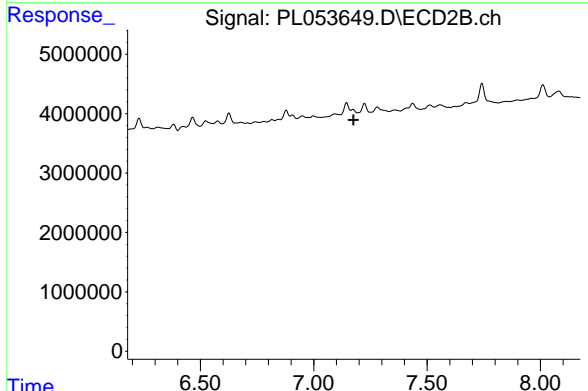


#16 4,4'-DDD
 R.T.: 6.879 min
 Delta R.T.: 0.002 min
 Response: 1169724
 Conc: 0.56 ng/ml

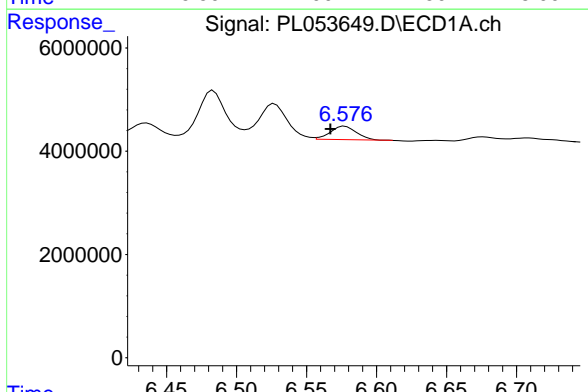


#17 4,4'-DDT
 R.T.: 6.483 min
 Delta R.T.: -0.008 min
 Response: 12610626
 Conc: 1.27 ng/ml

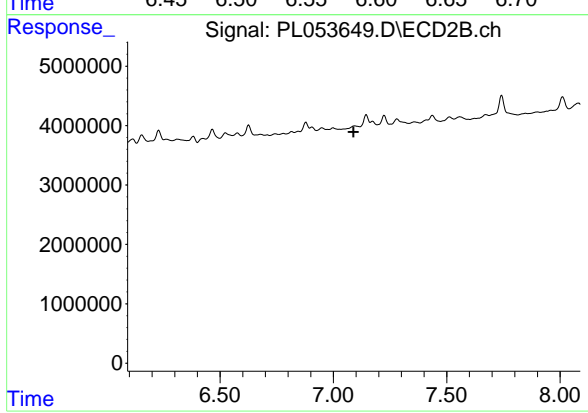
Instrument :
 ECD_L
 ClientSampled :



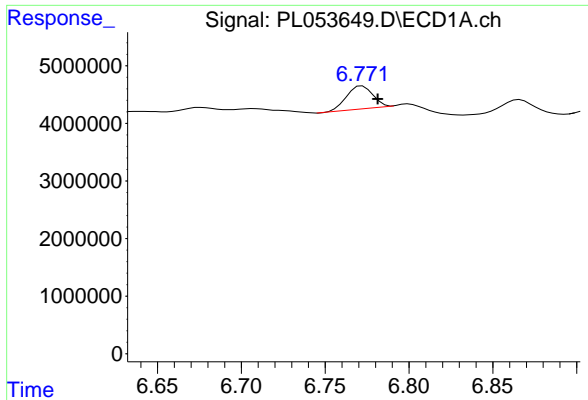
#17 4,4'-DDT
 R.T.: 0.000 min
 Exp R.T. : 7.176 min
 Response: 0
 Conc: N.D.



#18 Endrin aldehyde
 R.T.: 6.577 min
 Delta R.T.: 0.010 min
 Response: 3203824
 Conc: 0.35 ng/ml

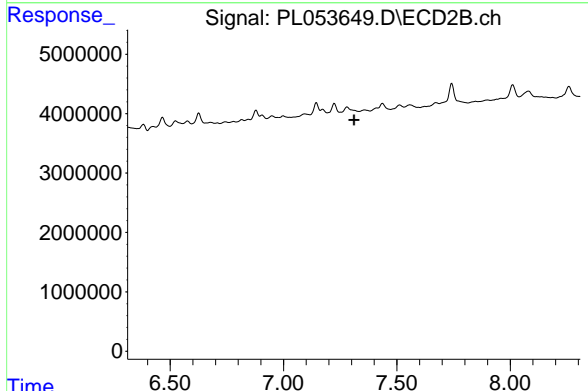


#18 Endrin aldehyde
 R.T.: 0.000 min
 Exp R.T. : 7.089 min
 Response: 0
 Conc: N.D.

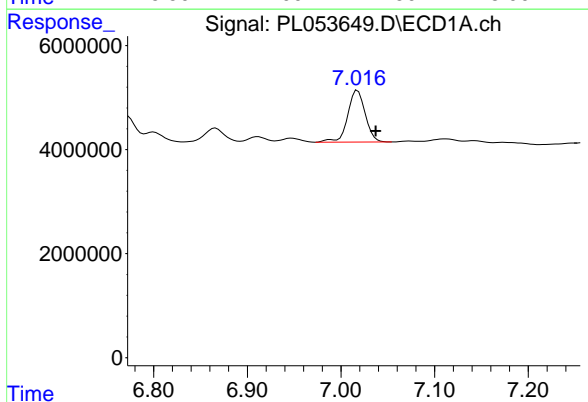


#19 Endosulfan Sulfate
 R.T.: 6.772 min
 Delta R.T.: -0.009 min
 Response: 4308201
 Conc: 0.42 ng/ml

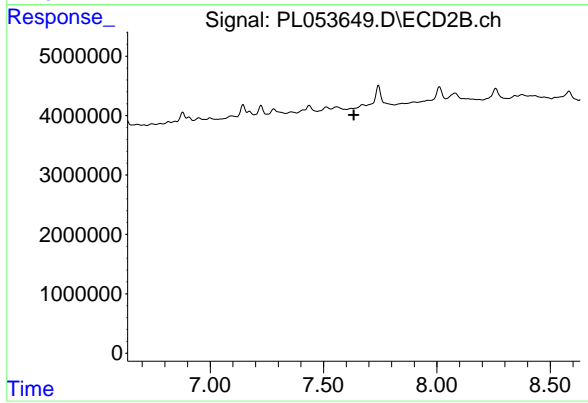
Instrument :
 ECD_L
 ClientSampled :



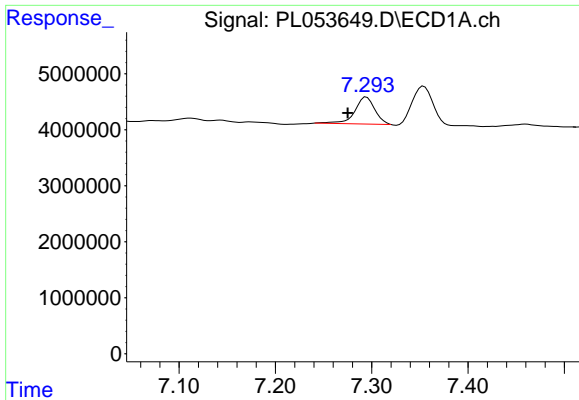
#19 Endosulfan Sulfate
 R.T.: 0.000 min
 Exp R.T. : 7.312 min
 Response: 0
 Conc: N.D.



#20 Methoxychlor
 R.T.: 7.018 min
 Delta R.T.: -0.019 min
 Response: 12940574
 Conc: 2.62 ng/ml

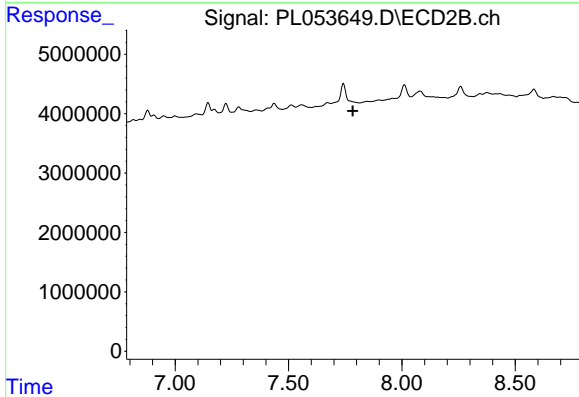


#20 Methoxychlor
 R.T.: 0.000 min
 Exp R.T. : 7.633 min
 Response: 0
 Conc: N.D.

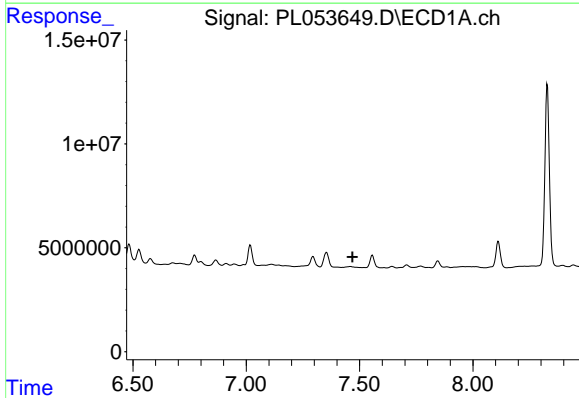


#21 Endrin ketone
 R.T.: 7.295 min
 Delta R.T.: 0.019 min
 Response: 6877042
 Conc: 0.64 ng/ml

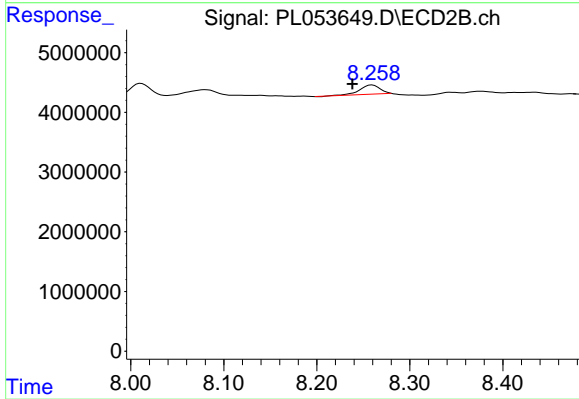
Instrument :
 ECD_L
 ClientSampled :



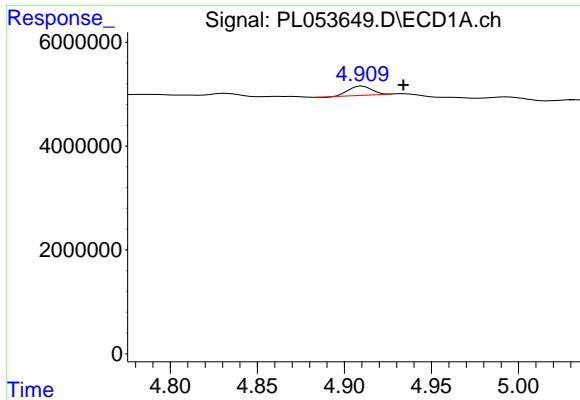
#21 Endrin ketone
 R.T.: 0.000 min
 Exp R.T. : 7.783 min
 Response: 0
 Conc: N.D.



#22 Mirex
 R.T.: 0.000 min
 Exp R.T. : 7.469 min
 Response: 0
 Conc: N.D.

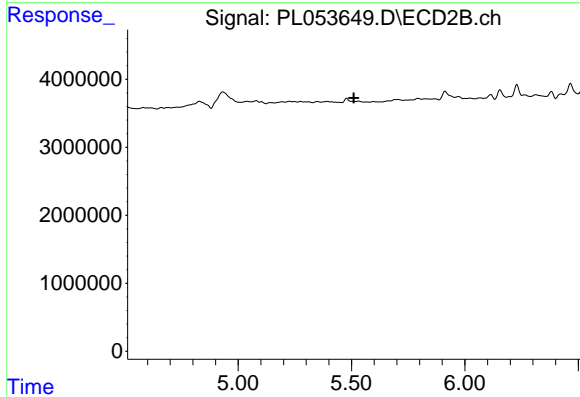


#22 Mirex
 R.T.: 8.260 min
 Delta R.T.: 0.021 min
 Response: 2417207
 Conc: 1.19 ng/ml

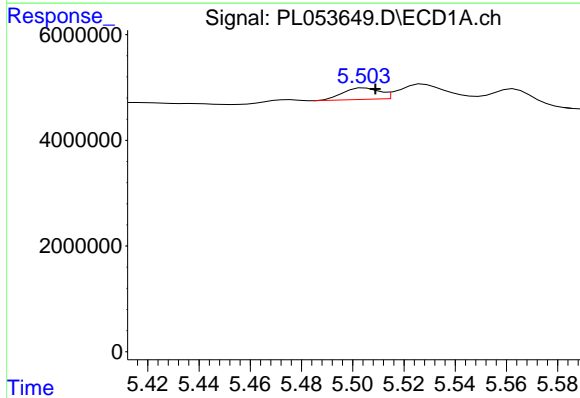


#24 Chlordane-2
 R.T.: 4.911 min
 Delta R.T.: -0.023 min
 Response: 1589645
 Conc: 4.13 ng/ml

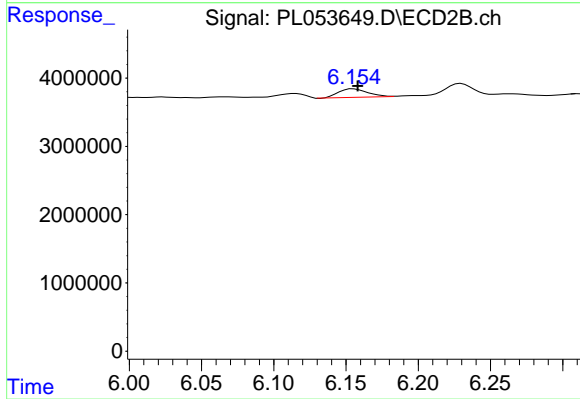
Instrument :
 ECD_L
 ClientSampled :



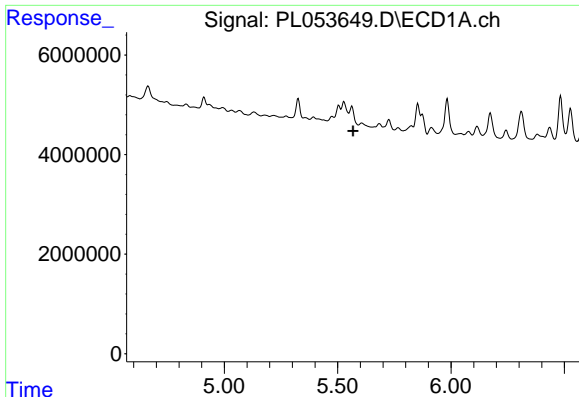
#24 Chlordane-2
 R.T.: 0.000 min
 Exp R.T. : 5.510 min
 Response: 0
 Conc: N.D.



#25 Chlordane-3
 R.T.: 5.505 min
 Delta R.T.: -0.004 min
 Response: 2145465
 Conc: 1.86 ng/ml



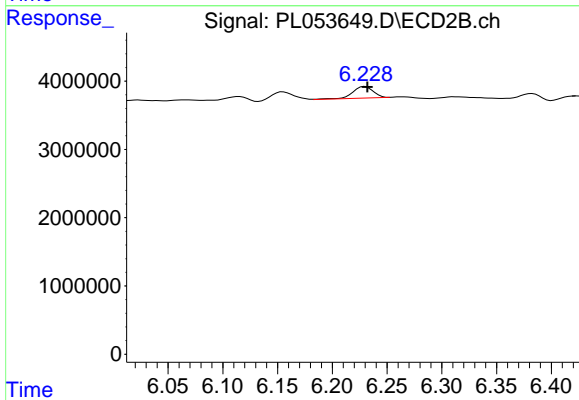
#25 Chlordane-3
 R.T.: 6.155 min
 Delta R.T.: -0.003 min
 Response: 1704846
 Conc: 4.67 ng/ml



#26 Chlordane-4

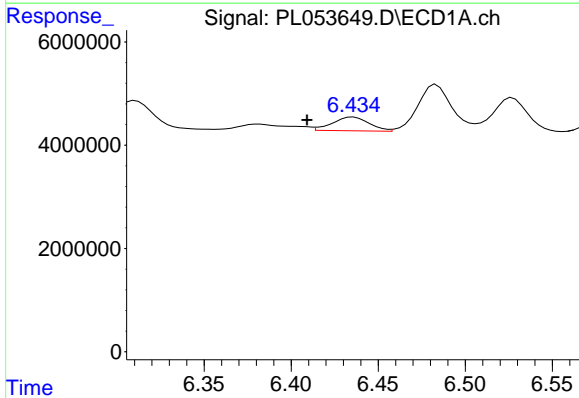
R.T.: 0.000 min
 Exp R.T.: 5.568 min
 Response: 0
 Conc: N.D.

Instrument :
 ECD_L
 ClientSampled :



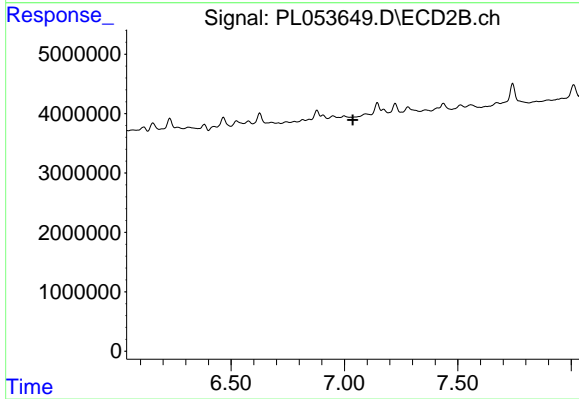
#26 Chlordane-4

R.T.: 6.230 min
 Delta R.T.: -0.003 min
 Response: 2189580
 Conc: 4.88 ng/ml



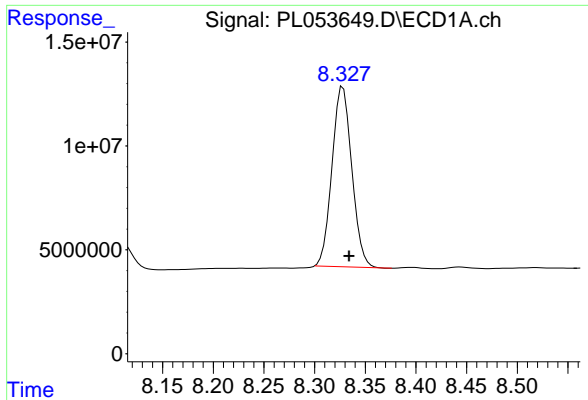
#27 Chlordane-5

R.T.: 6.436 min
 Delta R.T.: 0.027 min
 Response: 3941995
 Conc: 10.78 ng/ml



#27 Chlordane-5

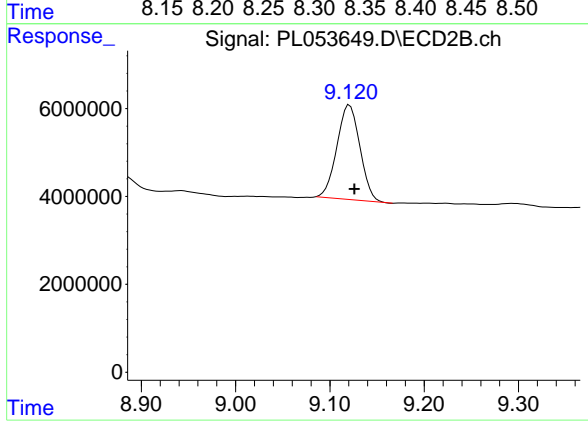
R.T.: 0.000 min
 Exp R.T.: 7.037 min
 Response: 0
 Conc: N.D.



#28 Decachlorobiphenyl

R.T.: 8.328 min
Delta R.T.: -0.006 min
Response: 117999628
Conc: 12.03 ng/ml

Instrument :
ECD_L
ClientSampleId :



#28 Decachlorobiphenyl

R.T.: 9.121 min
Delta R.T.: -0.005 min
Response: 36582597
Conc: 12.99 ng/ml