

Data Path : Z:\pestpcbsrv\HPCHEM1\ECD\_L\Data\PL102320\  
 Data File : PL062557.D  
 Signal(s) : Signal #1: ECD1A.ch Signal #2: ECD2B.ch  
 Acq On : 23 Oct 2020 14:26  
 Operator : DD\AJ  
 Sample : L4491-02  
 Misc :  
 ALS Vial : 11 Sample Multiplier: 1

Instrument :  
 ECD\_L  
 ClientSampleId :  
 COMP-2

Integration File signal 1: autoint1.e  
 Integration File signal 2: autoint2.e  
 Quant Time: Oct 23 17:52:19 2020  
 Quant Method : Z:\pestpcbsrv\HPCHEM1\ECD\_L\methods\PL102120.M  
 Quant Title : GC Extractables  
 QLast Update : Thu Oct 22 04:25:31 2020  
 Response via : Initial Calibration  
 Integrator: ChemStation

Volume Inj. : 1 µl  
 Signal #1 Phase : ZB-MR2 Signal #2 Phase: ZB-MR1  
 Signal #1 Info : 30M x 0.32mm x0.2 Signal #2 Info : 30M x 0.32mm x0.5µm

Compound	RT#1	RT#2	Resp#1	Resp#2	ng/ml	ng/ml
-----						
System Monitoring Compounds						
1) SA Tetrachlo...	3.412	3.952	38261571	63412187	22.244	21.578
28) SA Decachlor...	8.127	8.990	33578204	44412982	20.930	21.220

Target Compounds

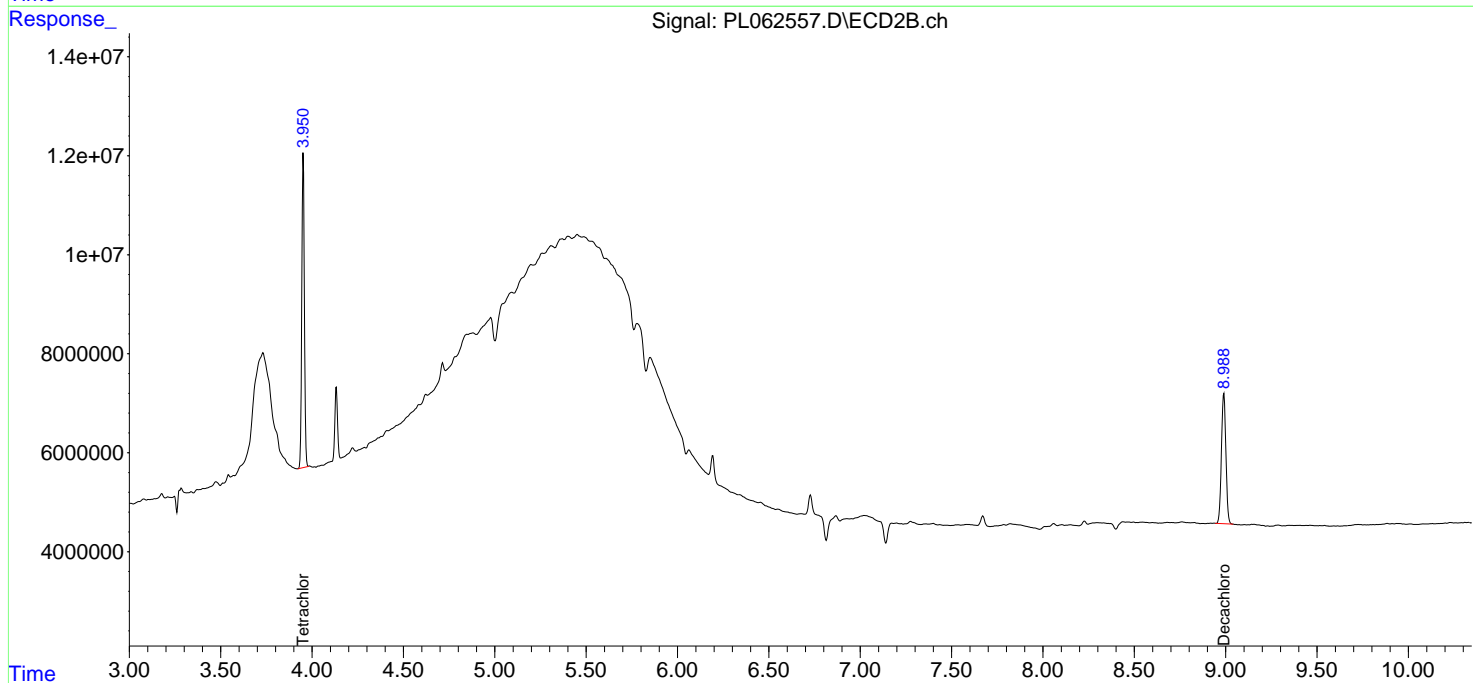
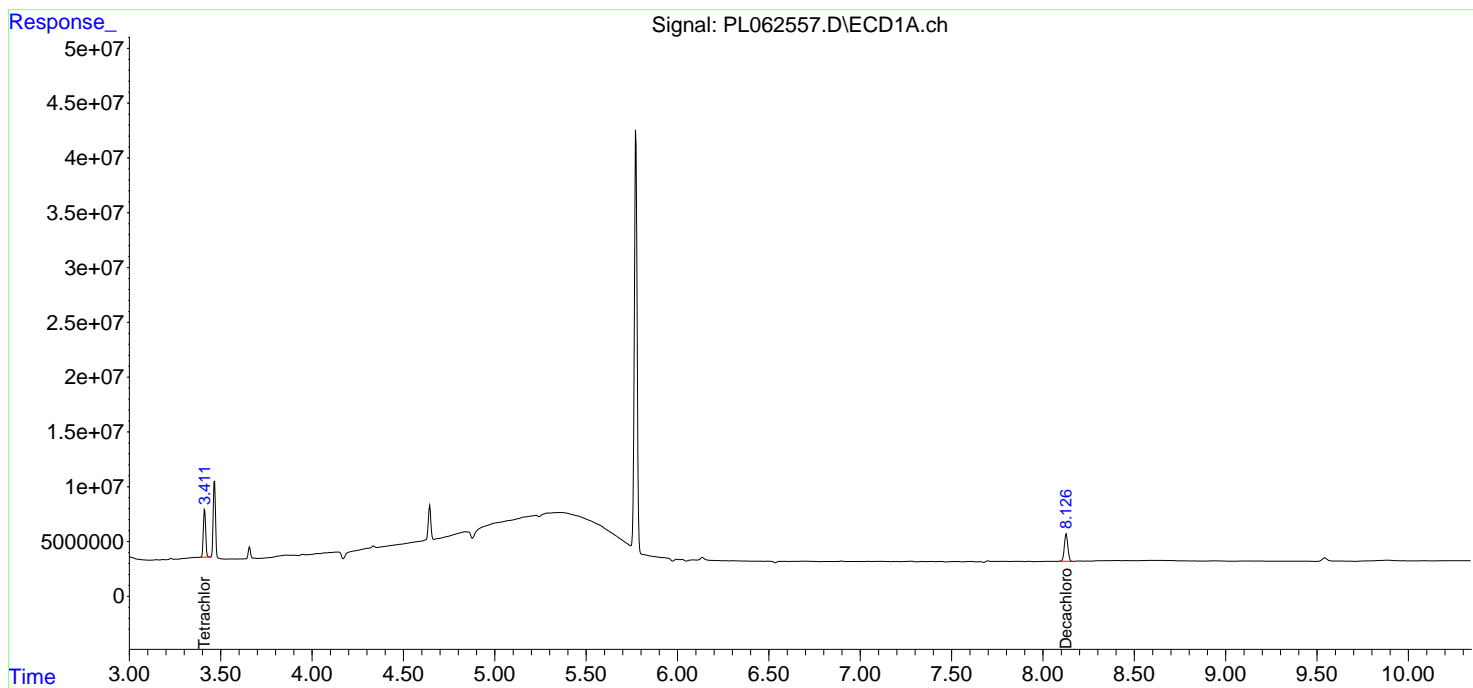
(f)=RT Delta > 1/2 Window (#)=Amounts differ by > 25% (m)=manual int.

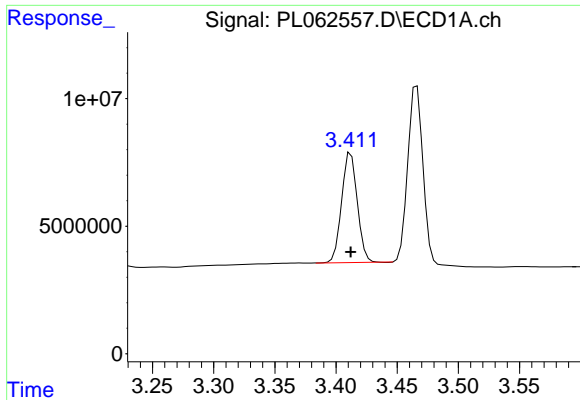
Data Path : Z:\pestpcbsrv\HPCHEM1\ECD\_L\Data\PL102320\  
 Data File : PL062557.D  
 Signal(s) : Signal #1: ECD1A.ch Signal #2: ECD2B.ch  
 Acq On : 23 Oct 2020 14:26  
 Operator : DD\AJ  
 Sample : L4491-02  
 Misc :  
 ALS Vial : 11 Sample Multiplier: 1

Instrument :  
 ECD\_L  
 ClientSampleId :  
 COMP-2

Integration File signal 1: autoint1.e  
 Integration File signal 2: autoint2.e  
 Quant Time: Oct 23 17:52:19 2020  
 Quant Method : Z:\pestpcbsrv\HPCHEM1\ECD\_L\methods\PL102120.M  
 Quant Title : GC Extractables  
 QLast Update : Thu Oct 22 04:25:31 2020  
 Response via : Initial Calibration  
 Integrator: ChemStation

Volume Inj. : 1 µl  
 Signal #1 Phase : ZB-MR2 Signal #2 Phase: ZB-MR1  
 Signal #1 Info : 30M x 0.32mm x0.2 Signal #2 Info : 30M x 0.32mm x0.5µm

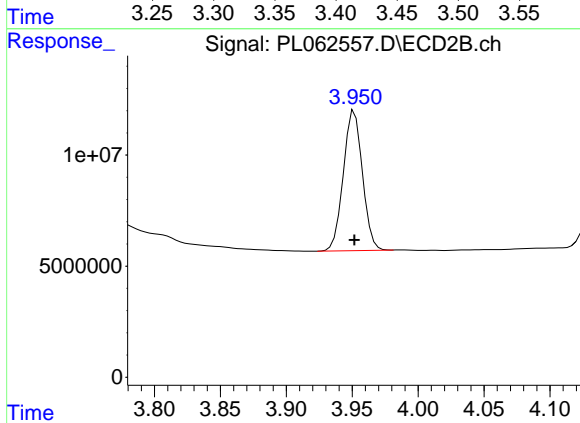




#1 Tetrachloro-m-xylene

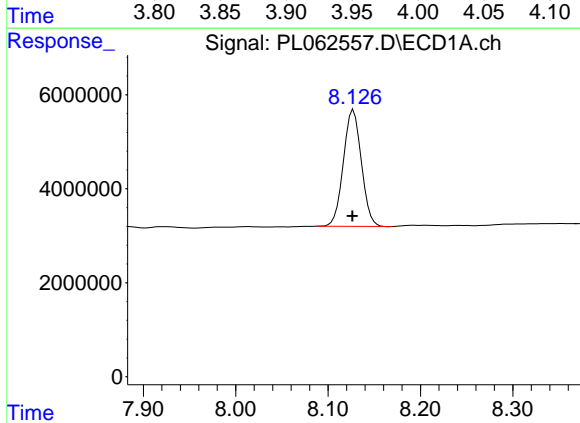
R.T.: 3.412 min  
 Delta R.T.: 0.000 min  
 Response: 38261571  
 Conc: 22.24 ng/ml

Instrument :  
 ECD\_L  
 ClientSampleId :  
 COMP-2



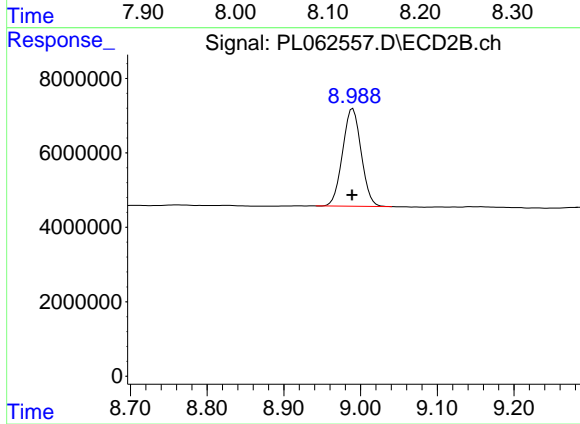
#1 Tetrachloro-m-xylene

R.T.: 3.952 min  
 Delta R.T.: 0.000 min  
 Response: 63412187  
 Conc: 21.58 ng/ml



#28 Decachlorobiphenyl

R.T.: 8.127 min  
 Delta R.T.: 0.001 min  
 Response: 33578204  
 Conc: 20.93 ng/ml



#28 Decachlorobiphenyl

R.T.: 8.990 min  
 Delta R.T.: 0.000 min  
 Response: 44412982  
 Conc: 21.22 ng/ml