

Data Path : Z:\pestpcbsrv\HPCHEM1\ECD_L\Data\PL102418\
 Data File : PL041314.D
 Signal(s) : Signal #1: ECD1A.ch Signal #2: ECD2B.ch
 Acq On : 24 Oct 2018 20:21
 Operator : AJ\SJ
 Sample : I.BLK
 Misc :
 ALS Vial : 2 Sample Multiplier: 1

Instrument :
 ECD_L
 ClientSampleId :

Integration File signal 1: autoint1.e
 Integration File signal 2: autoint2.e
 Quant Time: Oct 25 04:35:37 2018
 Quant Method : Z:\pestpcbsrv\HPCHEM1\ECD_L\methods\PL101118.M
 Quant Title : GC Extractables
 QLast Update : Thu Oct 11 03:28:36 2018
 Response via : Initial Calibration
 Integrator: ChemStation

Volume Inj. : 2 µl
 Signal #1 Phase : ZB-MR1 Signal #2 Phase: ZB-MR2
 Signal #1 Info : 30M x 0.32mm x0.5 Signal #2 Info : 30M x 0.32mm x0.25µm

Compound	RT#1	RT#2	Resp#1	Resp#2	ng/ml	ng/ml

System Monitoring Compounds						
1) SA Tetrachlo...	3.476	4.103	122.7E6	64474279	22.393	23.123
28) SA Decachlor...	8.220	9.233	107.8E6	47730313	20.738	18.458
Target Compounds						
6) B beta-BHC	0.000	4.994f	0	1943024	N.D.	1.212 #
8) B Heptachlo...	5.262f	6.066f	2398923	5695056	0.366	1.986 #
15) B Endosulfa...	6.240f	0.000	6059608	0	1.081	N.D. #
21) B Endrin ke...	7.131f	0.000	19933	0	0.004	N.D. #

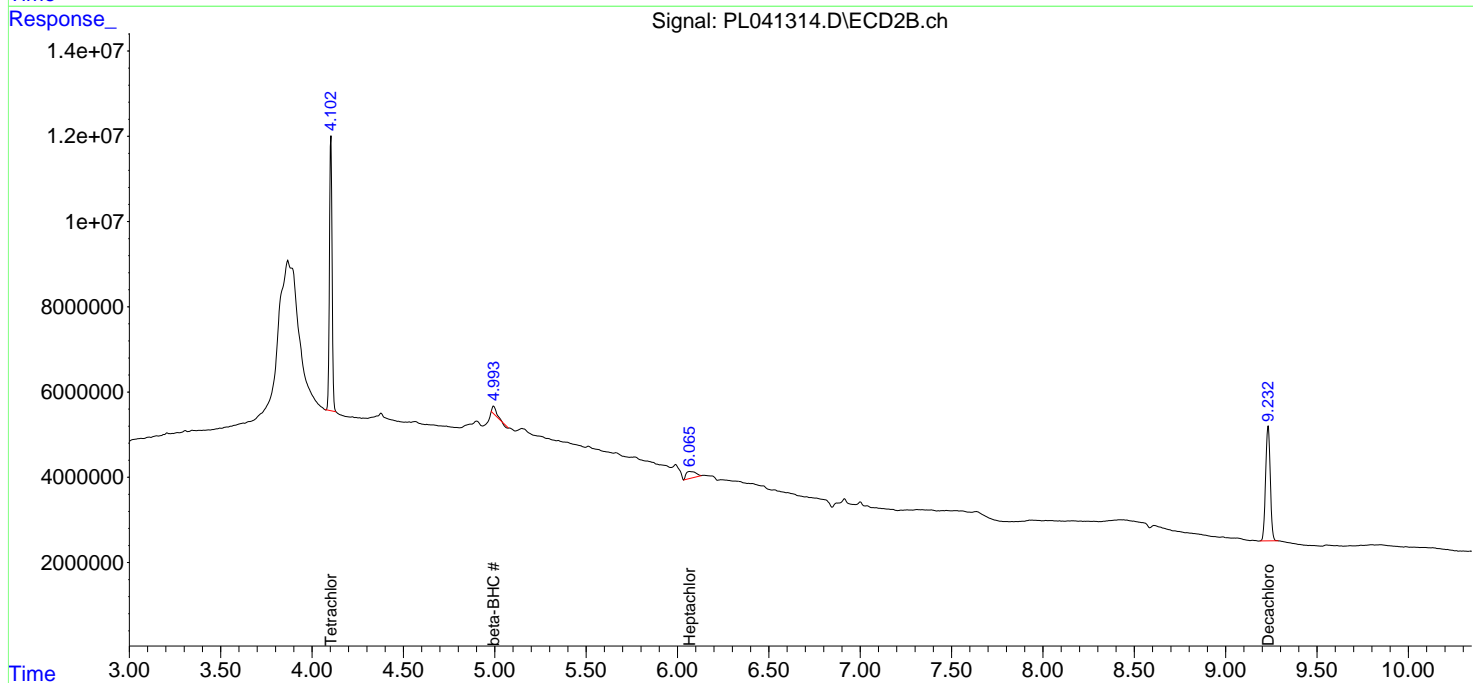
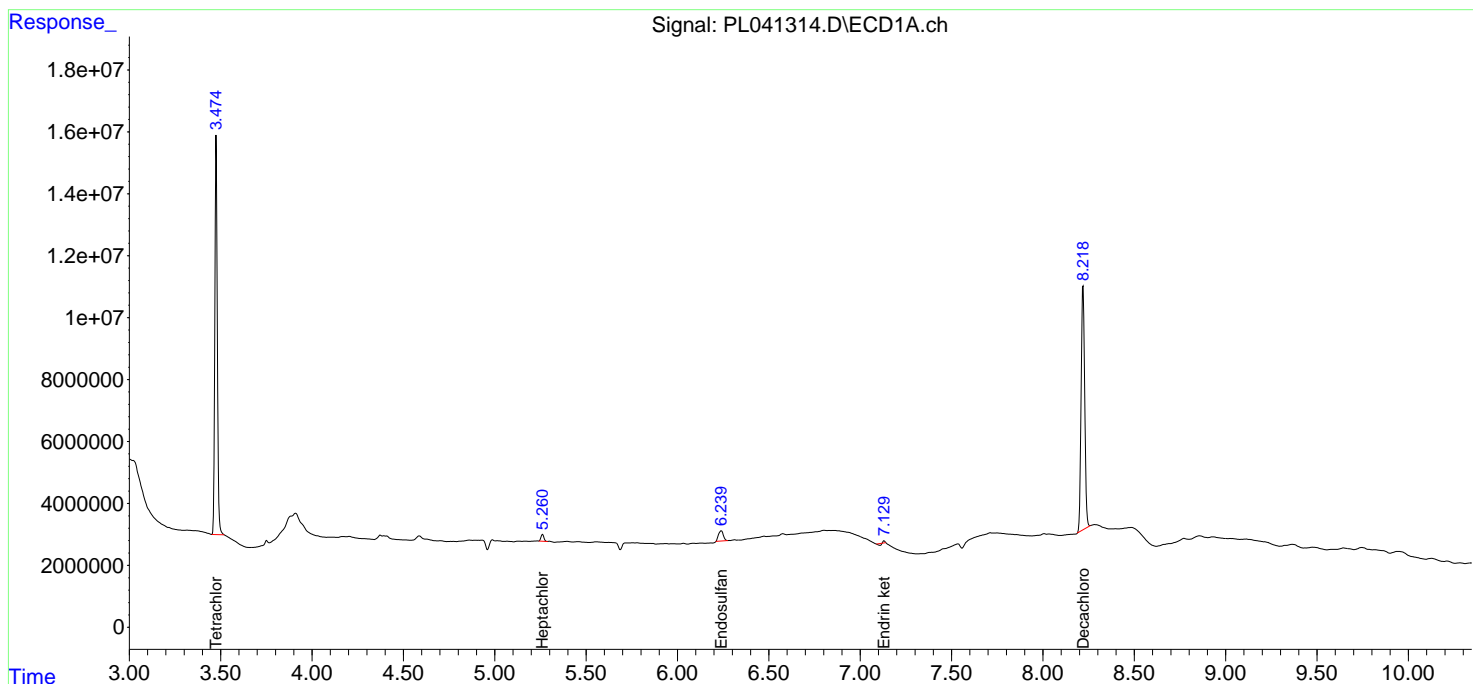
(f)=RT Delta > 1/2 Window (#)=Amounts differ by > 25% (m)=manual int.

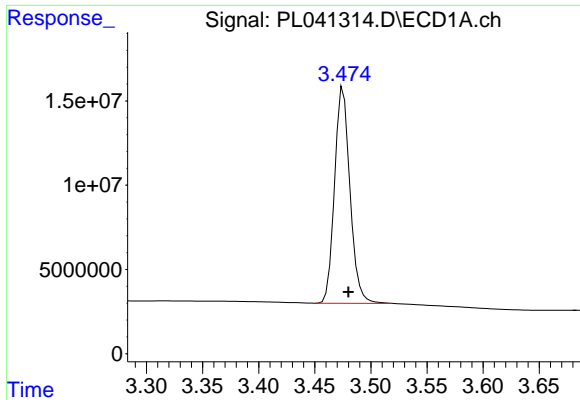
Data Path : Z:\pestpcbsrv\HPCHEM1\ECD_L\Data\PL102418\
 Data File : PL041314.D
 Signal(s) : Signal #1: ECD1A.ch Signal #2: ECD2B.ch
 Acq On : 24 Oct 2018 20:21
 Operator : AJ\SJ
 Sample : I.BLK
 Misc :
 ALS Vial : 2 Sample Multiplier: 1

Instrument :
 ECD_L
 ClientSampled :

Integration File signal 1: autoint1.e
 Integration File signal 2: autoint2.e
 Quant Time: Oct 25 04:35:37 2018
 Quant Method : Z:\pestpcbsrv\HPCHEM1\ECD_L\methods\PL101118.M
 Quant Title : GC Extractables
 QLast Update : Thu Oct 11 03:28:36 2018
 Response via : Initial Calibration
 Integrator: ChemStation

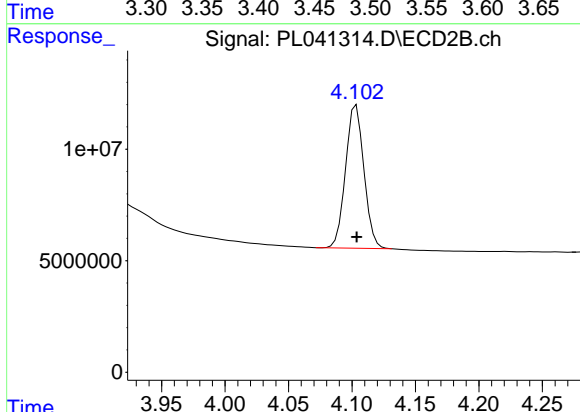
Volume Inj. : 2 µl
 Signal #1 Phase : ZB-MR1 Signal #2 Phase: ZB-MR2
 Signal #1 Info : 30M x 0.32mm x0.5 Signal #2 Info : 30M x 0.32mm x0.25µm



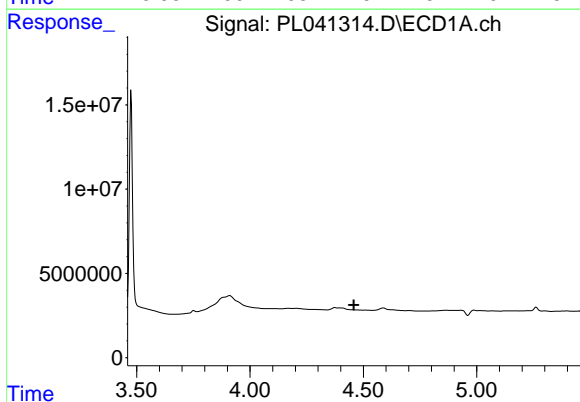


#1 Tetrachloro-m-xylene
 R.T.: 3.476 min
 Delta R.T.: -0.004 min
 Response: 122731250
 Conc: 22.39 ng/ml

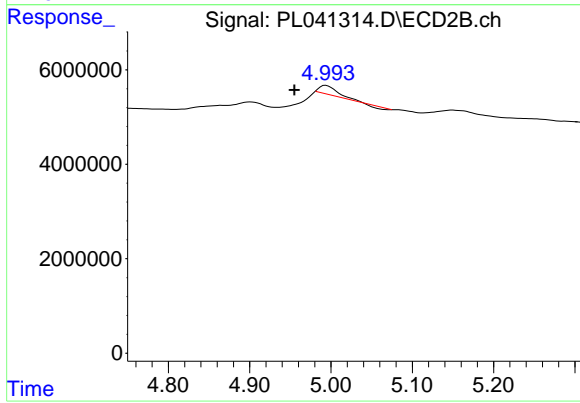
Instrument :
 ECD_L
 ClientSampleId :



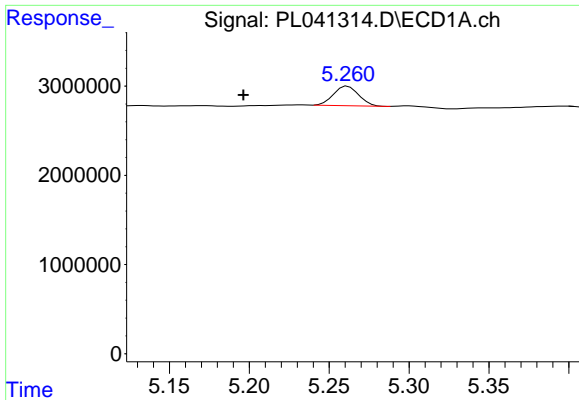
#1 Tetrachloro-m-xylene
 R.T.: 4.103 min
 Delta R.T.: 0.000 min
 Response: 64474279
 Conc: 23.12 ng/ml



#6 beta-BHC
 R.T.: 0.000 min
 Exp R.T. : 4.458 min
 Response: 0
 Conc: N.D.

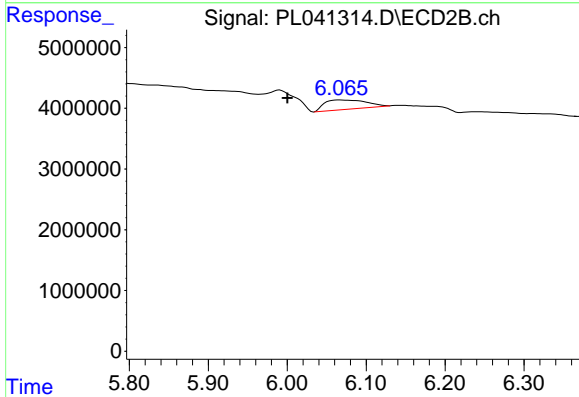


#6 beta-BHC
 R.T.: 4.994 min
 Delta R.T.: 0.039 min
 Response: 1943024
 Conc: 1.21 ng/ml

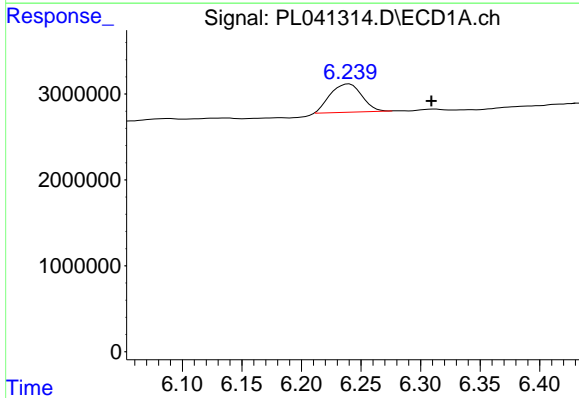


#8 Heptachlor epoxide
 R.T.: 5.262 min
 Delta R.T.: 0.065 min
 Response: 2398923
 Conc: 0.37 ng/ml

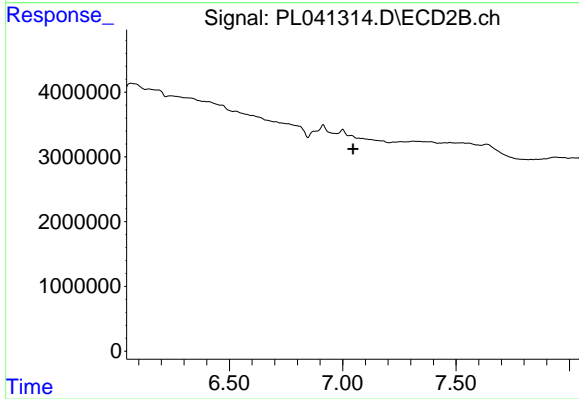
Instrument :
 ECD_L
 ClientSampleId :



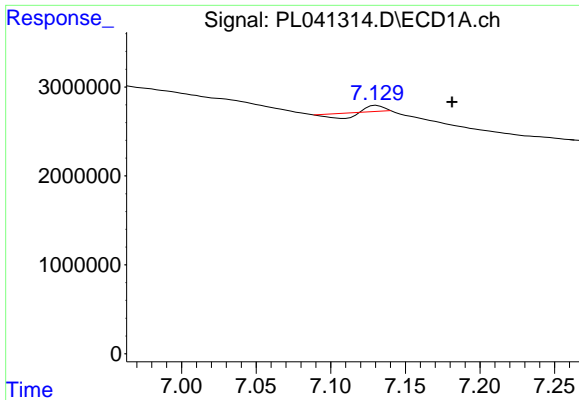
#8 Heptachlor epoxide
 R.T.: 6.066 min
 Delta R.T.: 0.066 min
 Response: 5695056
 Conc: 1.99 ng/ml



#15 Endosulfan II
 R.T.: 6.240 min
 Delta R.T.: -0.069 min
 Response: 6059608
 Conc: 1.08 ng/ml

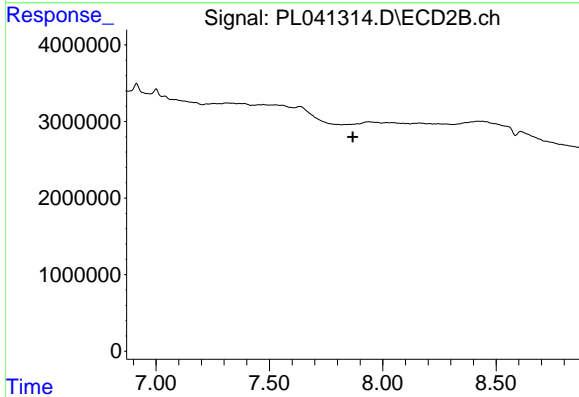


#15 Endosulfan II
 R.T.: 0.000 min
 Exp R.T. : 7.045 min
 Response: 0
 Conc: N.D.

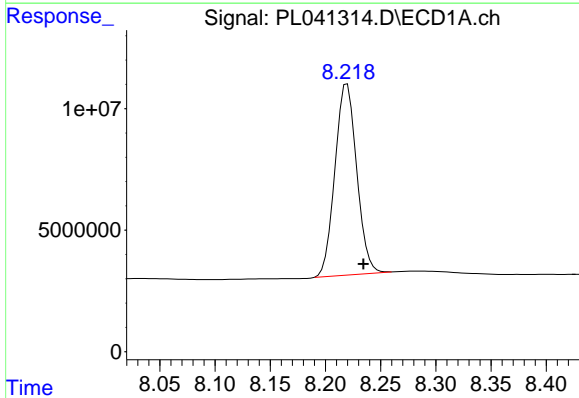


#21 Endrin ketone
 R.T.: 7.131 min
 Delta R.T.: -0.051 min
 Response: 19933
 Conc: 0.00 ng/ml

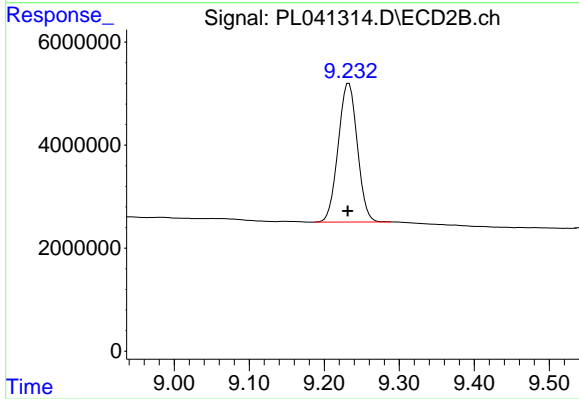
Instrument :
 ECD_L
 ClientSampleId :



#21 Endrin ketone
 R.T.: 0.000 min
 Exp R.T. : 7.867 min
 Response: 0
 Conc: N.D.



#28 Decachlorobiphenyl
 R.T.: 8.220 min
 Delta R.T.: -0.015 min
 Response: 107826527
 Conc: 20.74 ng/ml



#28 Decachlorobiphenyl
 R.T.: 9.233 min
 Delta R.T.: 0.002 min
 Response: 47730313
 Conc: 18.46 ng/ml