

Data Path : Z:\pestpcbsrv\HPCHEM1\ECD\_L\Data\PL102419\  
 Data File : PL053724.D  
 Signal(s) : Signal #1: ECD1A.ch Signal #2: ECD2B.ch  
 Acq On : 25 Oct 2019 00:38  
 Operator : SG\AJ  
 Sample : PSTDCCC050  
 Misc :  
 ALS Vial : 4 Sample Multiplier: 1

Instrument :  
 ECD\_L  
 ClientSampleId :  
 PSTDCCC050

Integration File signal 1: autoint1.e  
 Integration File signal 2: autoint2.e  
 Quant Time: Oct 25 01:30:00 2019  
 Quant Method : Z:\pestpcbsrv\HPCHEM1\ECD\_L\methods\PL101919.M  
 Quant Title : GC Extractables  
 QLast Update : Fri Oct 18 13:56:08 2019  
 Response via : Initial Calibration  
 Integrator: ChemStation

Volume Inj. : 1 µl  
 Signal #1 Phase : ZB-MR2 Signal #2 Phase: ZB-MR1  
 Signal #1 Info : 30M x 0.32mm x0.2 Signal #2 Info : 30M x 0.32mm x0.5µm

Compound	RT#1	RT#2	Resp#1	Resp#2	ng/ml	ng/ml
-----						
System Monitoring Compounds						
1) SA Tetrachlo...	3.542	4.044	581.7E6	129.2E6	53.667	51.623
28) SA Decachlor...	8.326	9.120	418.8E6	126.1E6	42.684	44.770
Target Compounds						
2) A alpha-BHC	3.986	4.435	945.0E6	184.3E6	54.195	53.299
3) MA gamma-BHC...	4.272	4.720	850.8E6	170.5E6	54.630	52.929
4) MA Heptachlor	4.579	5.230	854.6E6	164.3E6	54.147	50.999
5) MB Aldrin	4.831	5.535	786.1E6	150.5E6	54.989	50.467
6) B beta-BHC	4.522	4.890	348.6E6	78083673	52.906	50.552
7) B delta-BHC	4.731	5.107	836.7E6	160.1E6	54.972	52.999
8) B Heptachlo...	5.276	5.921	711.6E6	143.1E6	52.718	49.082
9) A Endosulfan I	5.618	6.278	641.2E6	133.3E6	52.161	49.155
10) B gamma-Chl...	5.504	6.155	716.6E6	141.0E6	52.525	48.316
11) B alpha-Chl...	5.563	6.228	691.4E6	144.0E6	51.968	49.345
12) B 4,4'-DDE	5.726	6.383	645.1E6	140.8E6	54.292	50.007
13) MA Dieldrin	5.863	6.535	682.1E6	140.8E6	52.334	49.345
14) MA Endrin	6.121	6.753	611.3E6	121.7E6	52.739	50.132
15) B Endosulfa...	6.393	6.962	565.4E6	124.9E6	50.570	48.899
16) A 4,4'-DDD	6.243	6.874	489.1E6	107.7E6	54.953	51.684
17) MA 4,4'-DDT	6.486	7.172	521.9E6	115.3E6	52.681	49.851
18) B Endrin al...	6.562	7.085	451.8E6	106.4E6	49.278	48.422
19) B Endosulfa...	6.775	7.309	503.6E6	117.4E6	49.509	47.860
20) A Methoxychlor	7.031	7.630	249.9E6	62941792	50.681	48.457
21) B Endrin ke...	7.270	7.780	532.1E6	124.3E6	49.425	48.205
22) Mirex	7.463	8.234	398.5E6	94783309	46.589	46.851
23) Chlordane-1	4.450f	0.000	4955880	0	13.973	N.D. #
24) Chlordane-2	0.000	5.535f	0	150.5E6	N.D.	1531.951 #
25) Chlordane-3	5.504	6.155	716.6E6	141.0E6	621.702	385.990 #
26) Chlordane-4	5.563	6.228	691.4E6	144.0E6	737.487	320.867 #
27) Chlordane-5	6.393f	0.000	565.4E6	0	1546.715	N.D. #

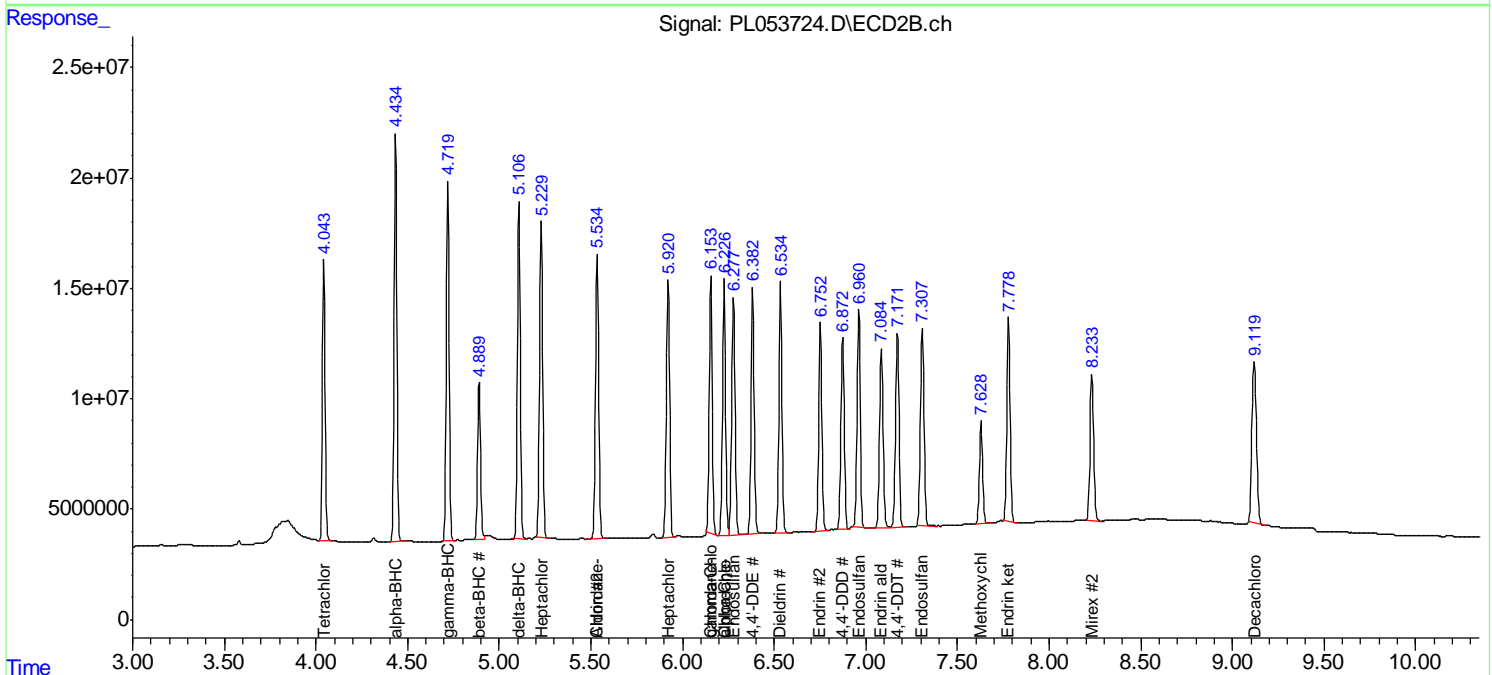
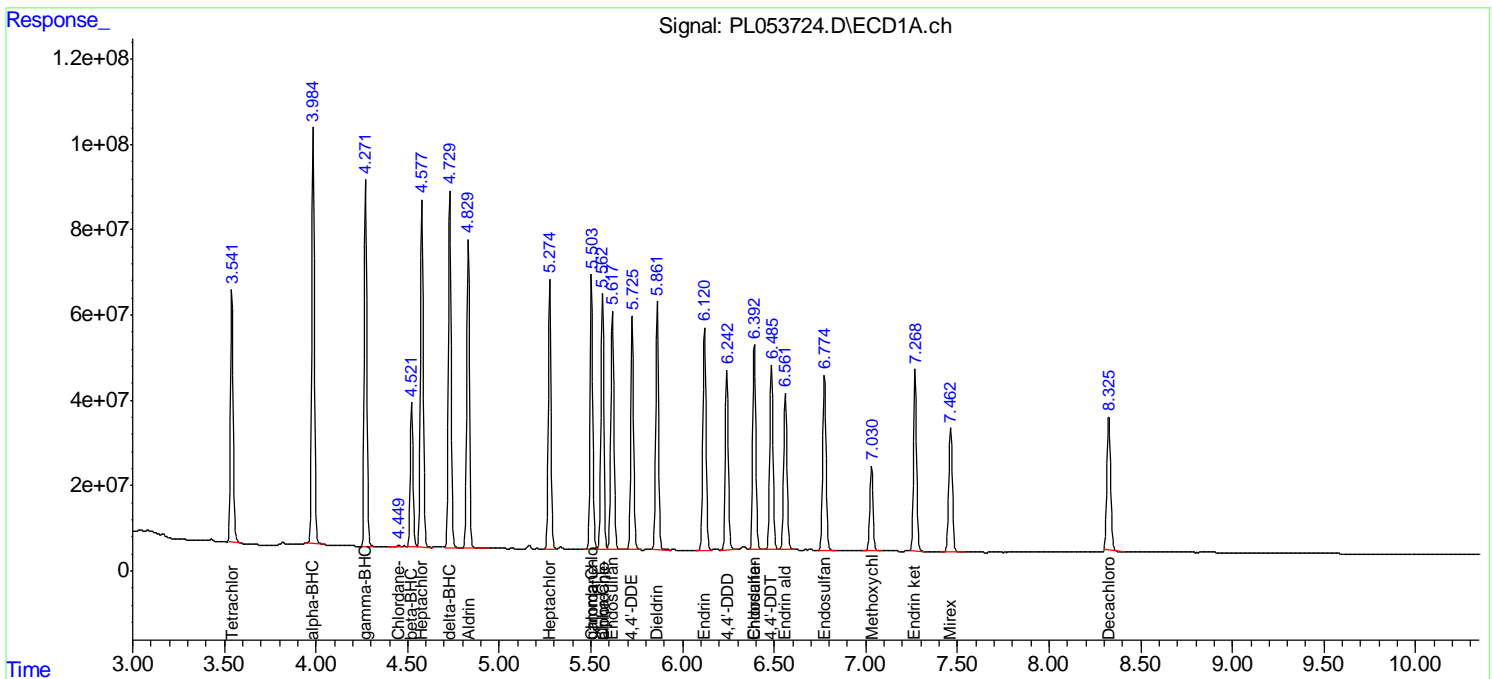
(f)=RT Delta > 1/2 Window (#)=Amounts differ by > 25% (m)=manual int.

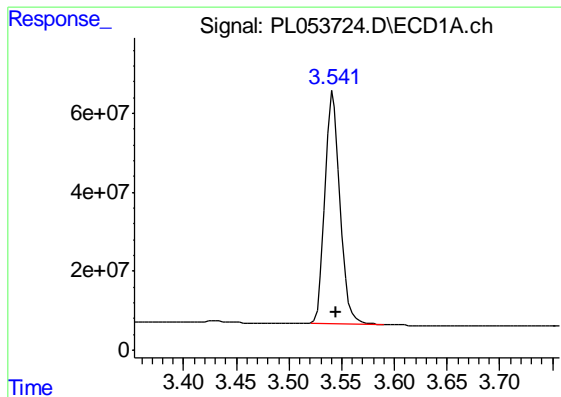
Data Path : Z:\pestpcbsrv\HPCHEM1\ECD\_L\Data\PL102419\  
 Data File : PL053724.D  
 Signal(s) : Signal #1: ECD1A.ch Signal #2: ECD2B.ch  
 Acq On : 25 Oct 2019 00:38  
 Operator : SG\AJ  
 Sample : PSTDCCC050  
 Misc :  
 ALS Vial : 4 Sample Multiplier: 1

Instrument :  
 ECD\_L  
 ClientSampleId :  
 PSTDCCC050

Integration File signal 1: autoint1.e  
 Integration File signal 2: autoint2.e  
 Quant Time: Oct 25 01:30:00 2019  
 Quant Method : Z:\pestpcbsrv\HPCHEM1\ECD\_L\methods\PL101919.M  
 Quant Title : GC Extractables  
 QLast Update : Fri Oct 18 13:56:08 2019  
 Response via : Initial Calibration  
 Integrator: ChemStation

Volume Inj. : 1 µl  
 Signal #1 Phase : ZB-MR2 Signal #2 Phase: ZB-MR1  
 Signal #1 Info : 30M x 0.32mm x0.2 Signal #2 Info : 30M x 0.32mm x0.5µm

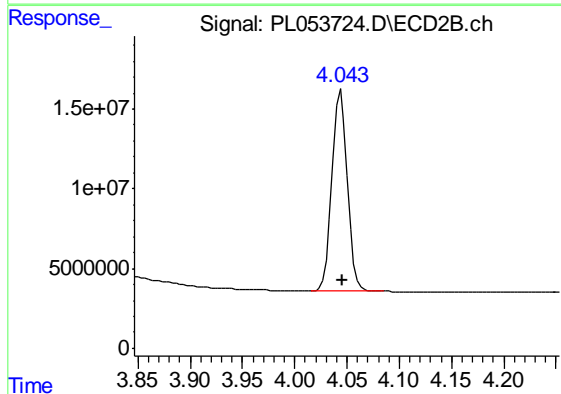




#1 Tetrachloro-m-xylene

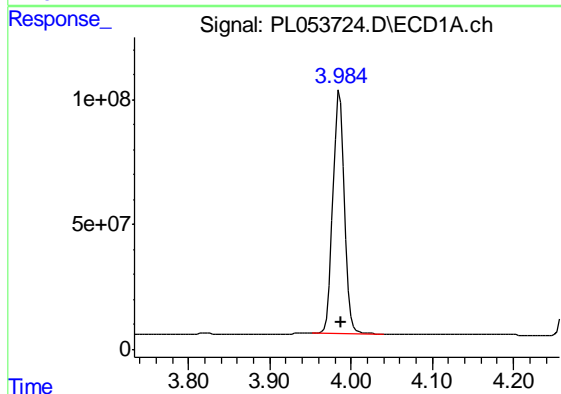
R.T.: 3.542 min  
 Delta R.T.: -0.002 min  
 Response: 581720215  
 Conc: 53.67 ng/ml

Instrument :  
 ECD\_L  
 ClientSampleId :  
 PSTDCCC050



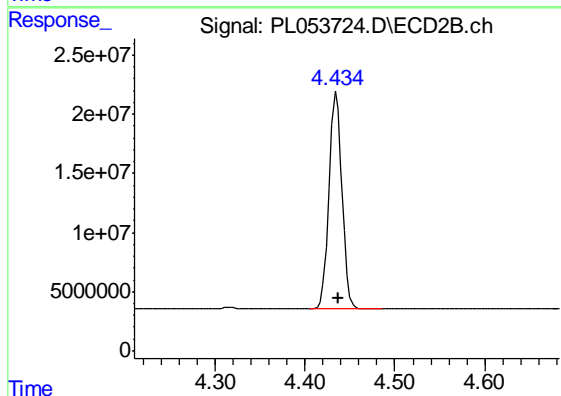
#1 Tetrachloro-m-xylene

R.T.: 4.044 min  
 Delta R.T.: -0.002 min  
 Response: 129179225  
 Conc: 51.62 ng/ml



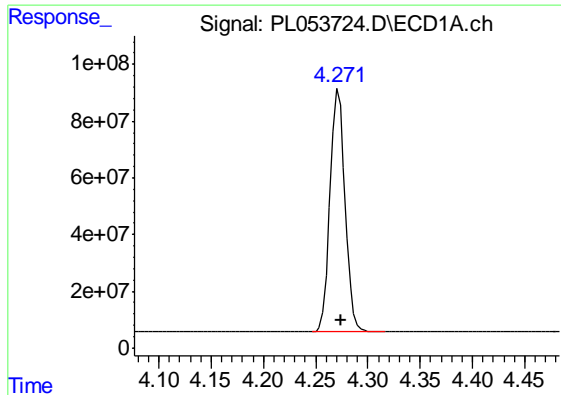
#2 alpha-BHC

R.T.: 3.986 min  
 Delta R.T.: -0.002 min  
 Response: 944969795  
 Conc: 54.19 ng/ml



#2 alpha-BHC

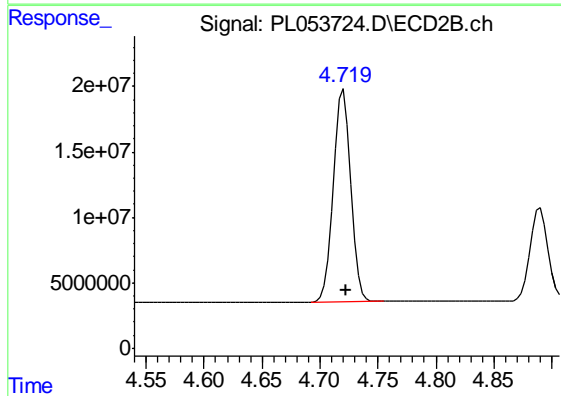
R.T.: 4.435 min  
 Delta R.T.: -0.002 min  
 Response: 184261181  
 Conc: 53.30 ng/ml



#3 gamma-BHC (Lindane)

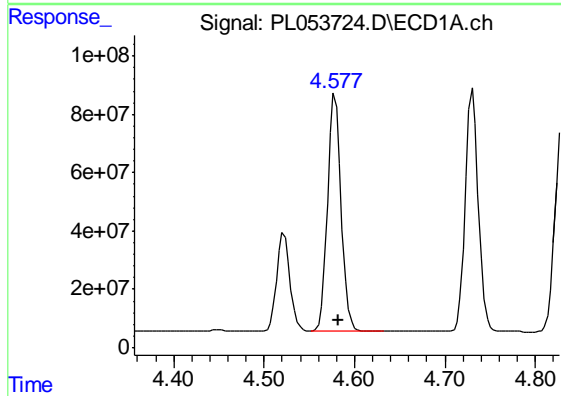
R.T.: 4.272 min  
 Delta R.T.: -0.002 min  
 Response: 850788284  
 Conc: 54.63 ng/ml

Instrument :  
 ECD\_L  
 ClientSampleId :  
 PSTDCCC050



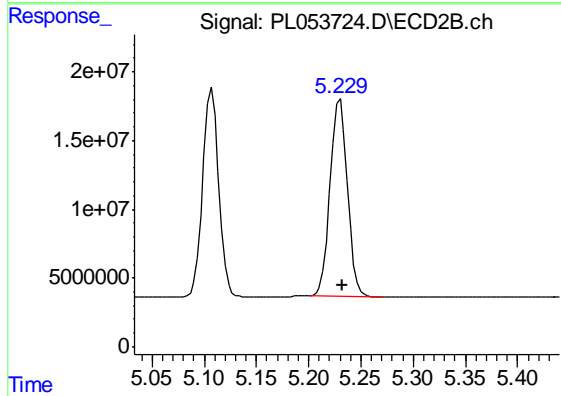
#3 gamma-BHC (Lindane)

R.T.: 4.720 min  
 Delta R.T.: -0.002 min  
 Response: 170451477  
 Conc: 52.93 ng/ml



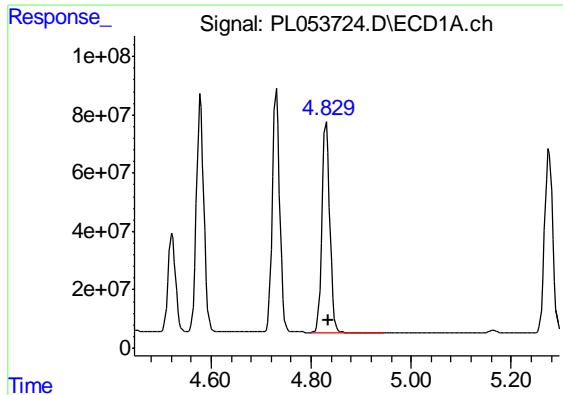
#4 Heptachlor

R.T.: 4.579 min  
 Delta R.T.: -0.003 min  
 Response: 854596445  
 Conc: 54.15 ng/ml



#4 Heptachlor

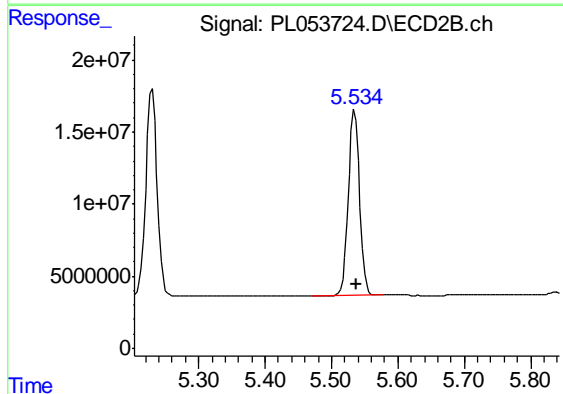
R.T.: 5.230 min  
 Delta R.T.: -0.002 min  
 Response: 164327850  
 Conc: 51.00 ng/ml



#5 Aldrin

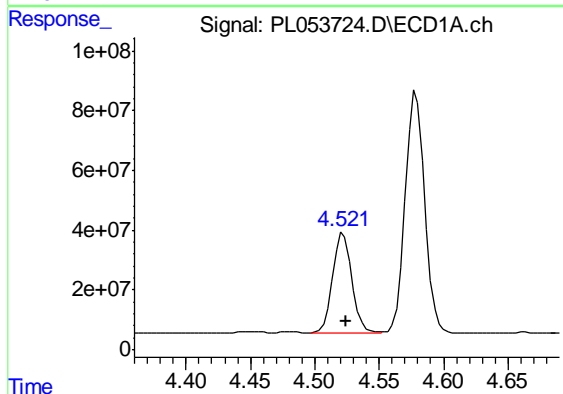
R.T.: 4.831 min  
Delta R.T.: -0.004 min  
Response: 786102312  
Conc: 54.99 ng/ml

Instrument :  
ECD\_L  
ClientSampleId :  
PSTDCCC050



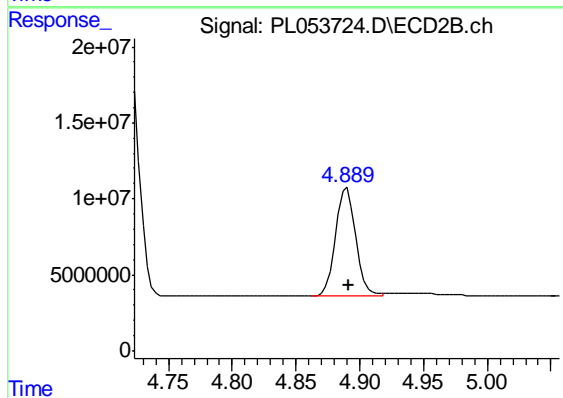
#5 Aldrin

R.T.: 5.535 min  
Delta R.T.: -0.002 min  
Response: 150470510  
Conc: 50.47 ng/ml



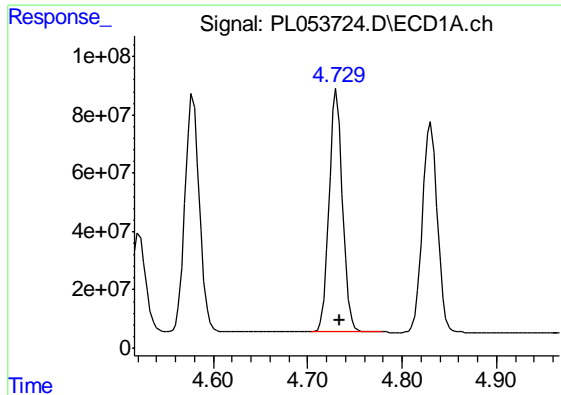
#6 beta-BHC

R.T.: 4.522 min  
Delta R.T.: -0.002 min  
Response: 348643816  
Conc: 52.91 ng/ml



#6 beta-BHC

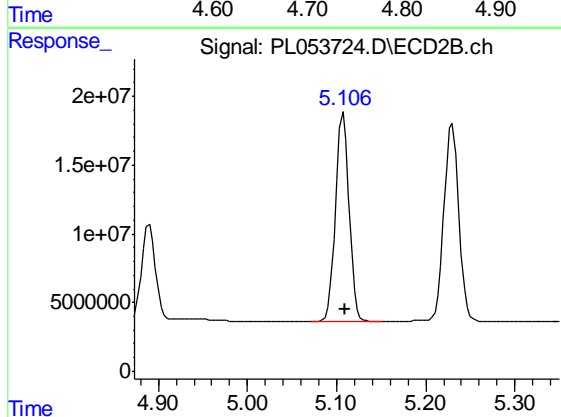
R.T.: 4.890 min  
Delta R.T.: -0.002 min  
Response: 78083673  
Conc: 50.55 ng/ml



#7 delta-BHC

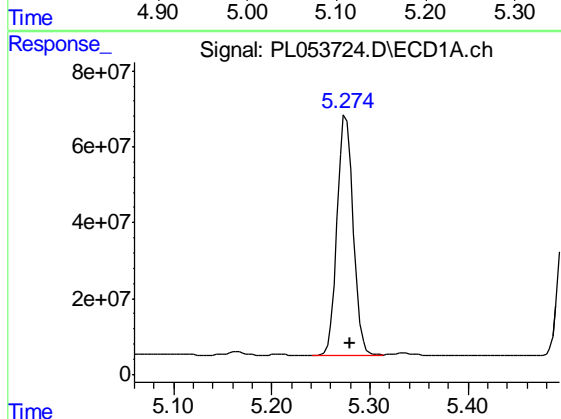
R.T.: 4.731 min  
Delta R.T.: -0.003 min  
Response: 836728694  
Conc: 54.97 ng/ml

Instrument :  
ECD\_L  
ClientSampleId :  
PSTDCCC050



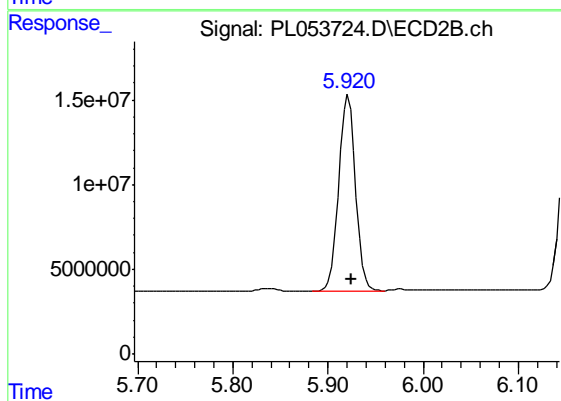
#7 delta-BHC

R.T.: 5.107 min  
Delta R.T.: -0.002 min  
Response: 160088975  
Conc: 53.00 ng/ml



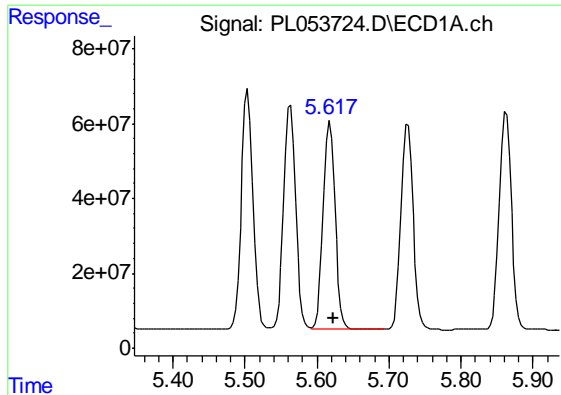
#8 Heptachlor epoxide

R.T.: 5.276 min  
Delta R.T.: -0.004 min  
Response: 711646451  
Conc: 52.72 ng/ml



#8 Heptachlor epoxide

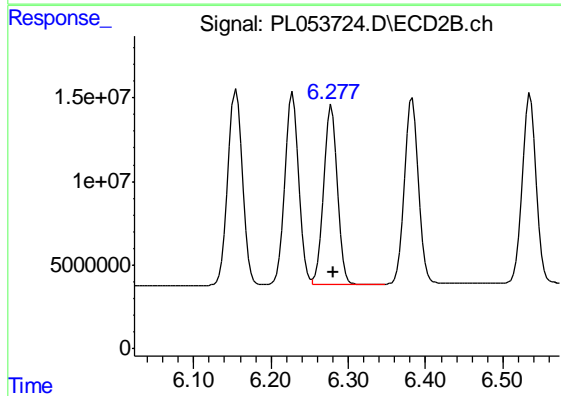
R.T.: 5.921 min  
Delta R.T.: -0.003 min  
Response: 143143099  
Conc: 49.08 ng/ml



#9 Endosulfan I

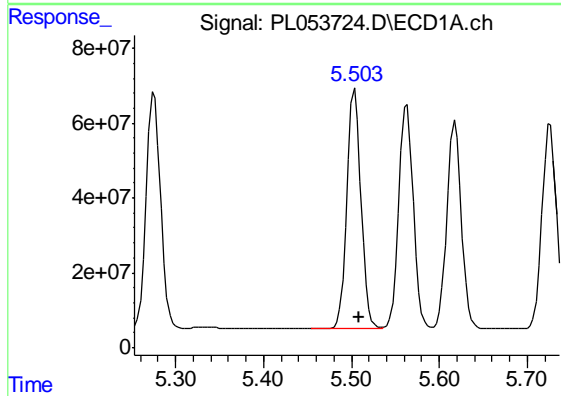
R.T.: 5.618 min  
 Delta R.T.: -0.004 min  
 Response: 641165464  
 Conc: 52.16 ng/ml

Instrument :  
 ECD\_L  
 ClientSampled :  
 PSTDCCC050



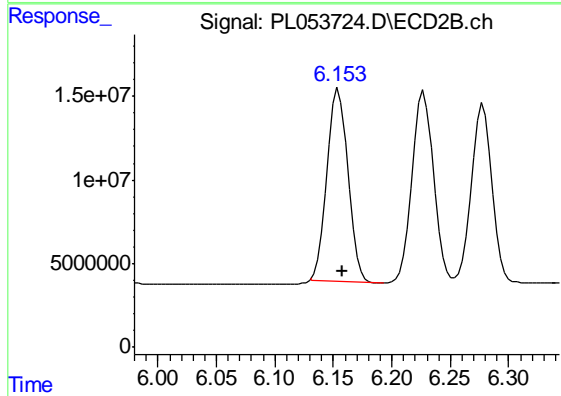
#9 Endosulfan I

R.T.: 6.278 min  
 Delta R.T.: -0.003 min  
 Response: 133270968  
 Conc: 49.16 ng/ml



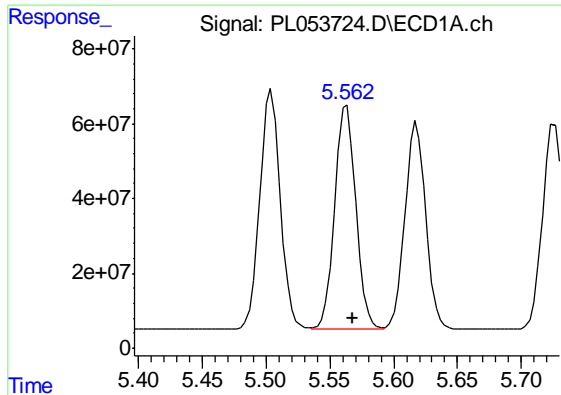
#10 gamma-Chlordane

R.T.: 5.504 min  
 Delta R.T.: -0.005 min  
 Response: 716627628  
 Conc: 52.52 ng/ml



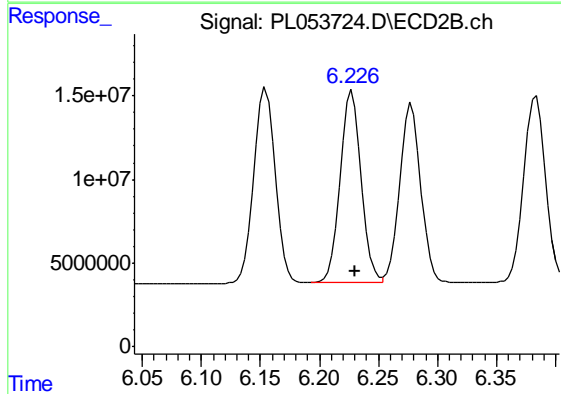
#10 gamma-Chlordane

R.T.: 6.155 min  
 Delta R.T.: -0.003 min  
 Response: 140975442  
 Conc: 48.32 ng/ml

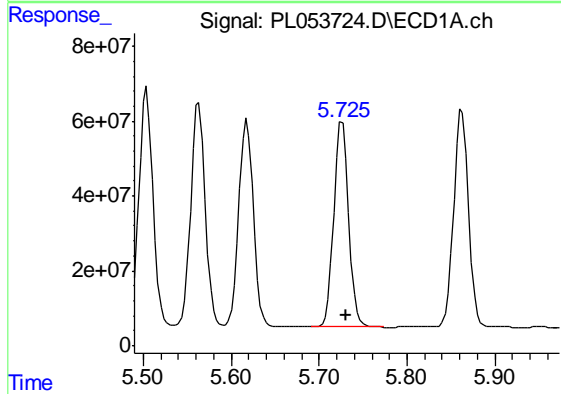


#11 alpha-Chlordane  
 R.T.: 5.563 min  
 Delta R.T.: -0.004 min  
 Response: 691358996  
 Conc: 51.97 ng/ml

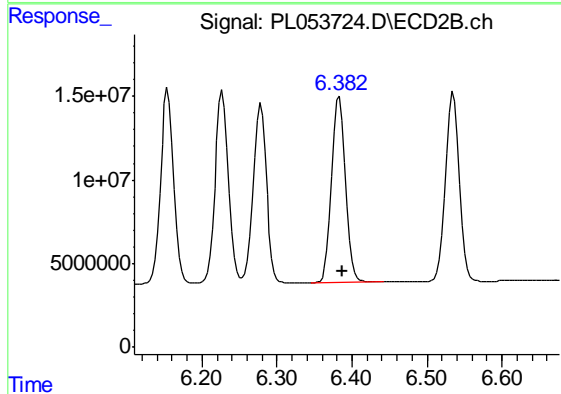
Instrument :  
 ECD\_L  
 ClientSampleId :  
 PSTDCCC050



#11 alpha-Chlordane  
 R.T.: 6.228 min  
 Delta R.T.: -0.003 min  
 Response: 144048985  
 Conc: 49.35 ng/ml

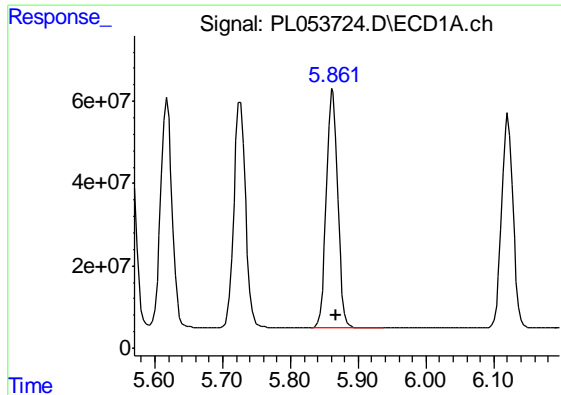


#12 4,4'-DDE  
 R.T.: 5.726 min  
 Delta R.T.: -0.005 min  
 Response: 645115494  
 Conc: 54.29 ng/ml



#12 4,4'-DDE  
 R.T.: 6.383 min  
 Delta R.T.: -0.003 min  
 Response: 140837404  
 Conc: 50.01 ng/ml

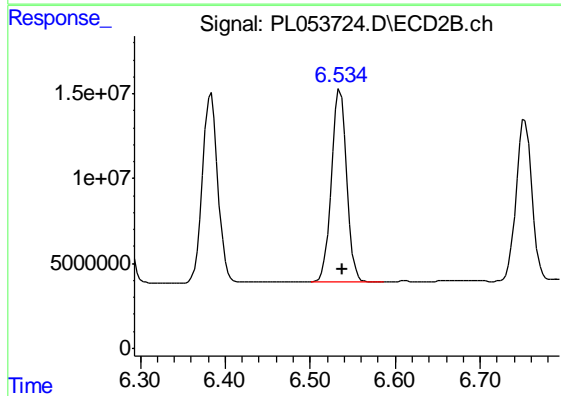




#13 Dieldrin

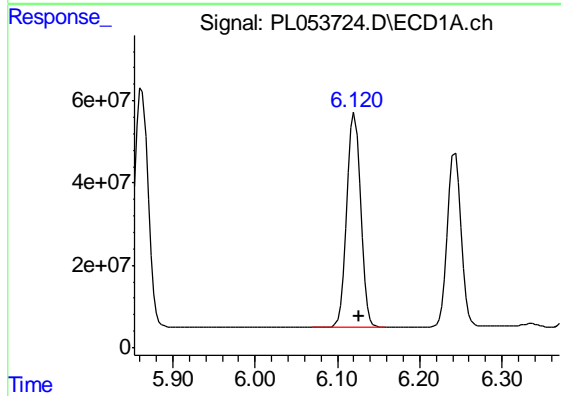
R.T.: 5.863 min  
 Delta R.T.: -0.005 min  
 Response: 682101274  
 Conc: 52.33 ng/ml

Instrument :  
 ECD\_L  
 ClientSampleId :  
 PSTDCCC050



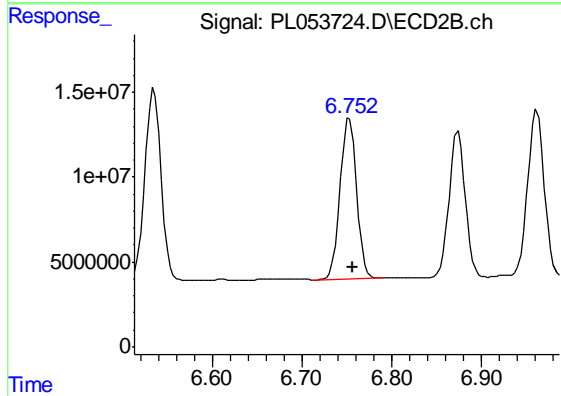
#13 Dieldrin

R.T.: 6.535 min  
 Delta R.T.: -0.003 min  
 Response: 140813611  
 Conc: 49.35 ng/ml



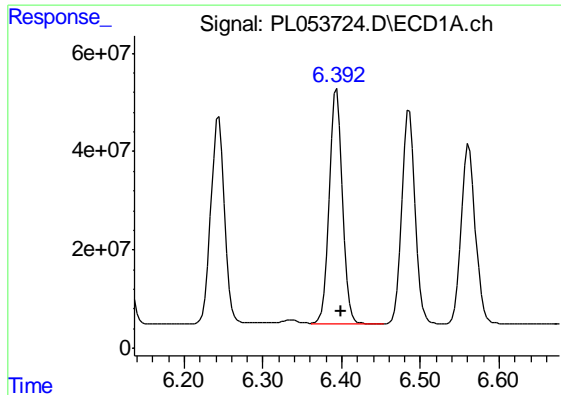
#14 Endrin

R.T.: 6.121 min  
 Delta R.T.: -0.005 min  
 Response: 611304335  
 Conc: 52.74 ng/ml



#14 Endrin

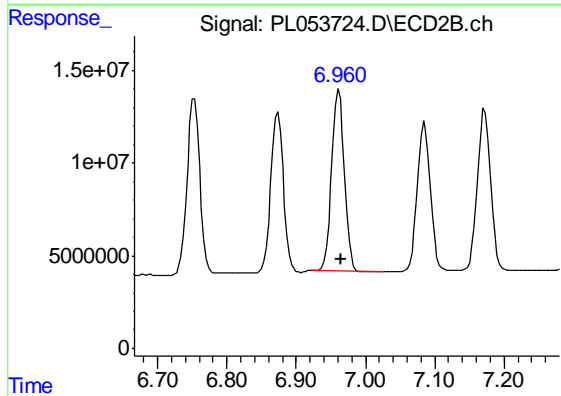
R.T.: 6.753 min  
 Delta R.T.: -0.003 min  
 Response: 121681047  
 Conc: 50.13 ng/ml



#15 Endosulfan II

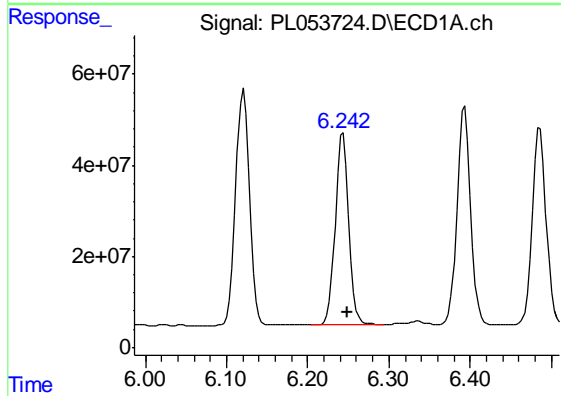
R.T.: 6.393 min  
 Delta R.T.: -0.005 min  
 Response: 565392788  
 Conc: 50.57 ng/ml

Instrument :  
 ECD\_L  
 ClientSampleId :  
 PSTDCCC050



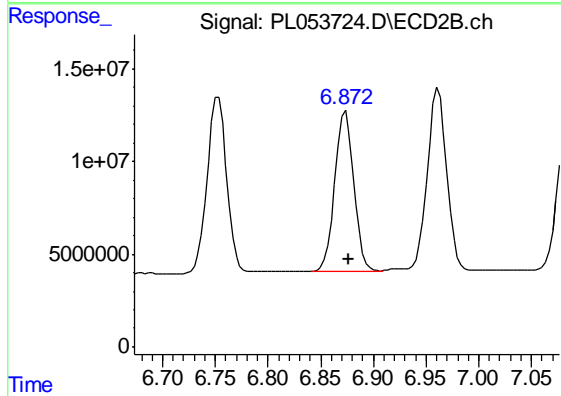
#15 Endosulfan II

R.T.: 6.962 min  
 Delta R.T.: -0.003 min  
 Response: 124911932  
 Conc: 48.90 ng/ml



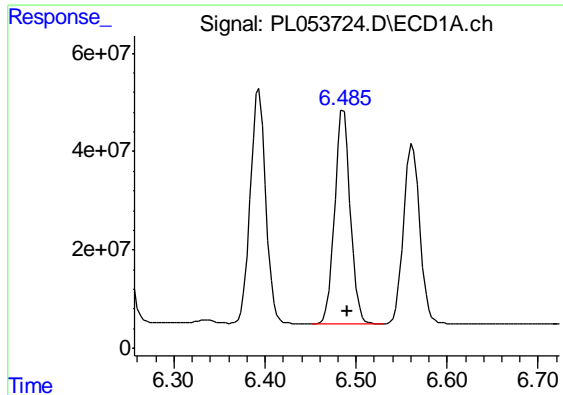
#16 4,4'-DDD

R.T.: 6.243 min  
 Delta R.T.: -0.005 min  
 Response: 489071097  
 Conc: 54.95 ng/ml



#16 4,4'-DDD

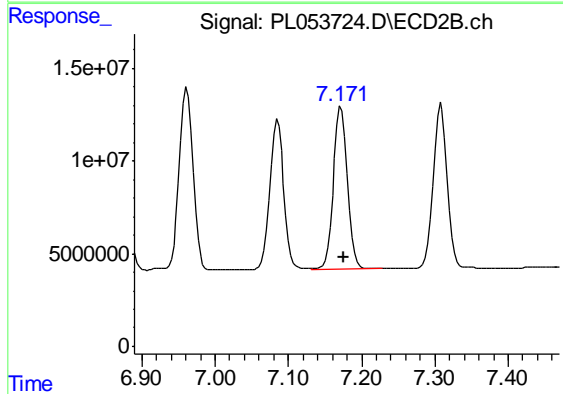
R.T.: 6.874 min  
 Delta R.T.: -0.003 min  
 Response: 107708133  
 Conc: 51.68 ng/ml



#17 4,4'-DDT

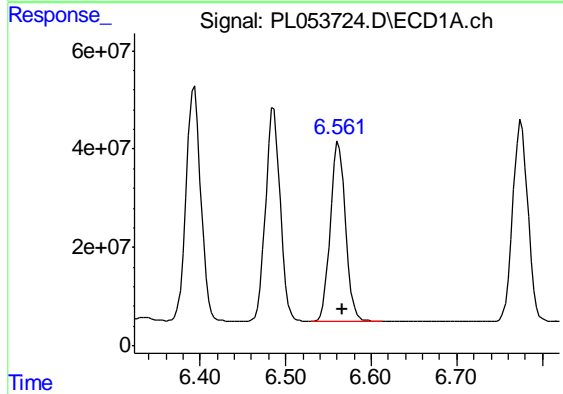
R.T.: 6.486 min  
Delta R.T.: -0.005 min  
Response: 521869581  
Conc: 52.68 ng/ml

Instrument :  
ECD\_L  
ClientSampleId :  
PSTDCCC050



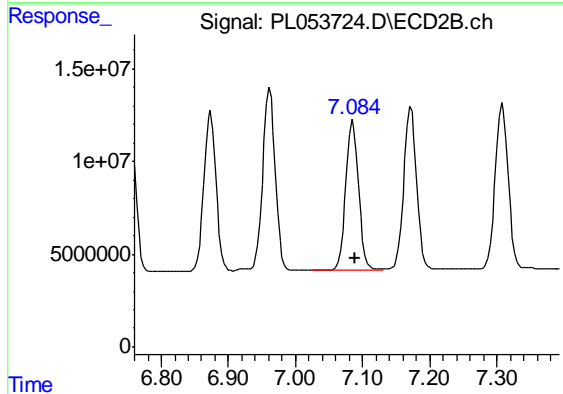
#17 4,4'-DDT

R.T.: 7.172 min  
Delta R.T.: -0.003 min  
Response: 115281577  
Conc: 49.85 ng/ml



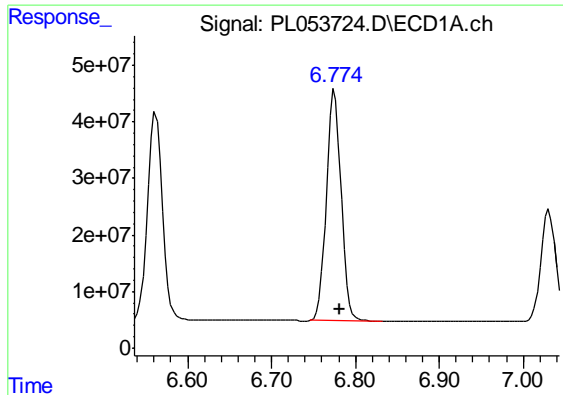
#18 Endrin aldehyde

R.T.: 6.562 min  
Delta R.T.: -0.005 min  
Response: 451840560  
Conc: 49.28 ng/ml



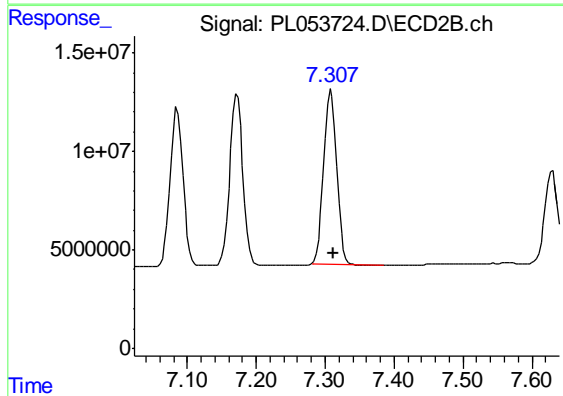
#18 Endrin aldehyde

R.T.: 7.085 min  
Delta R.T.: -0.004 min  
Response: 106372093  
Conc: 48.42 ng/ml

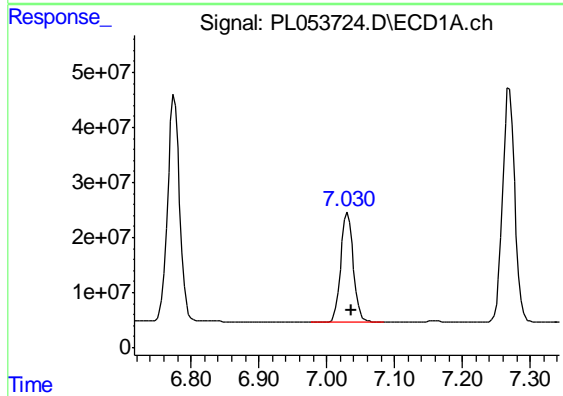


#19 Endosulfan Sulfate  
 R.T.: 6.775 min  
 Delta R.T.: -0.006 min  
 Response: 503587907  
 Conc: 49.51 ng/ml

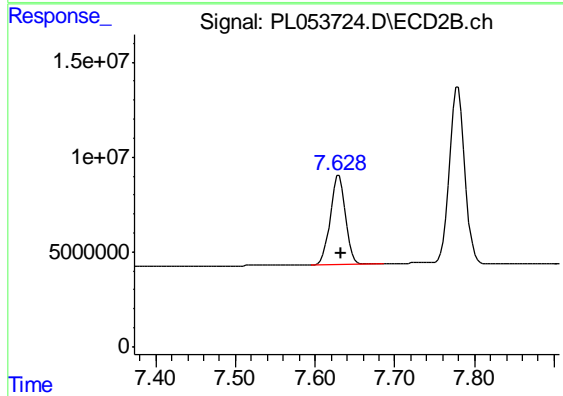
Instrument :  
 ECD\_L  
 ClientSampleId :  
 PSTDCCC050



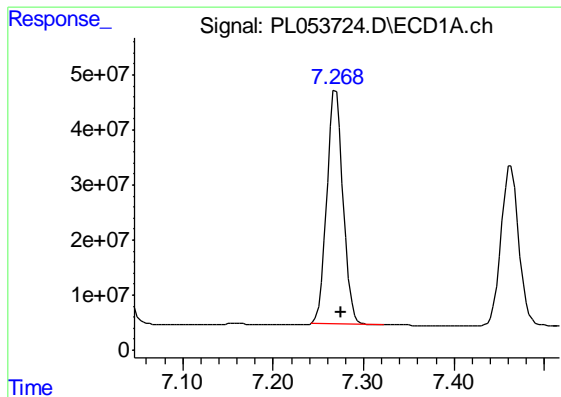
#19 Endosulfan Sulfate  
 R.T.: 7.309 min  
 Delta R.T.: -0.003 min  
 Response: 117430072  
 Conc: 47.86 ng/ml



#20 Methoxychlor  
 R.T.: 7.031 min  
 Delta R.T.: -0.006 min  
 Response: 249877076  
 Conc: 50.68 ng/ml



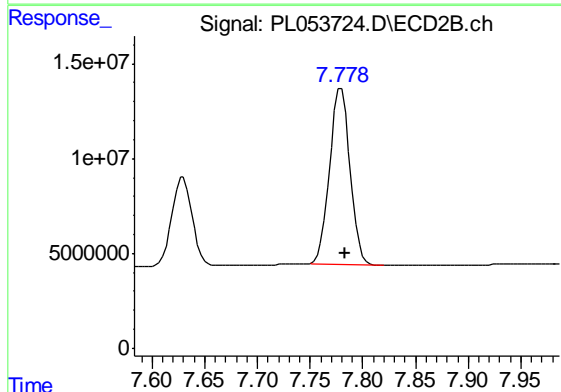
#20 Methoxychlor  
 R.T.: 7.630 min  
 Delta R.T.: -0.004 min  
 Response: 62941792  
 Conc: 48.46 ng/ml



#21 Endrin ketone

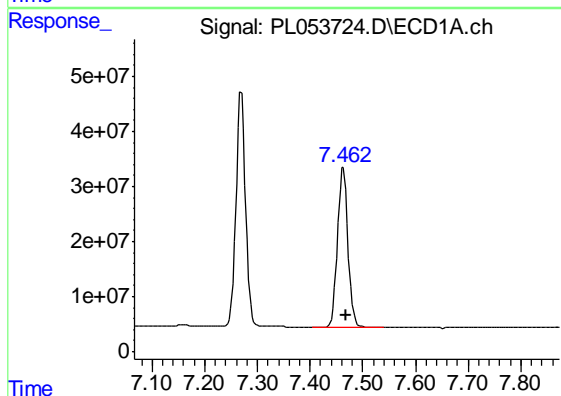
R.T.: 7.270 min  
Delta R.T.: -0.006 min  
Response: 532068826  
Conc: 49.43 ng/ml

Instrument :  
ECD\_L  
ClientSampleId :  
PSTDCCC050



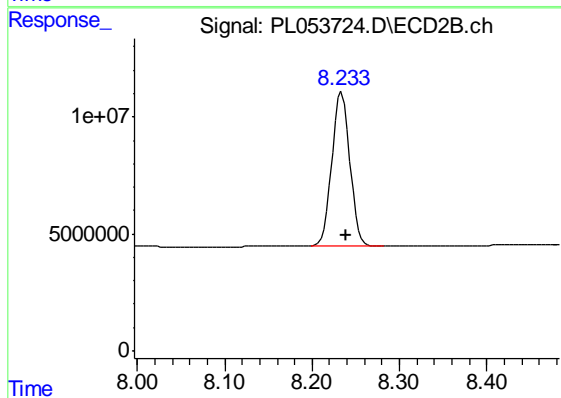
#21 Endrin ketone

R.T.: 7.780 min  
Delta R.T.: -0.004 min  
Response: 124294795  
Conc: 48.20 ng/ml



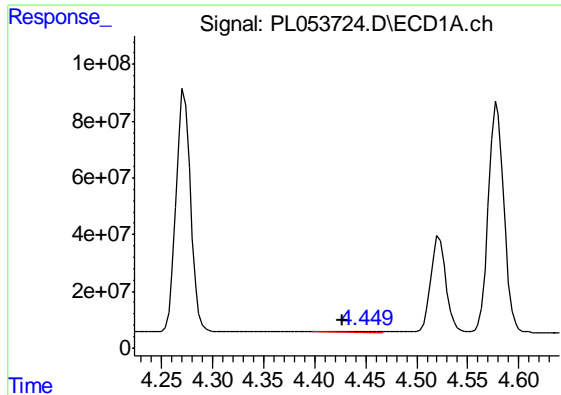
#22 Mirex

R.T.: 7.463 min  
Delta R.T.: -0.006 min  
Response: 398472503  
Conc: 46.59 ng/ml



#22 Mirex

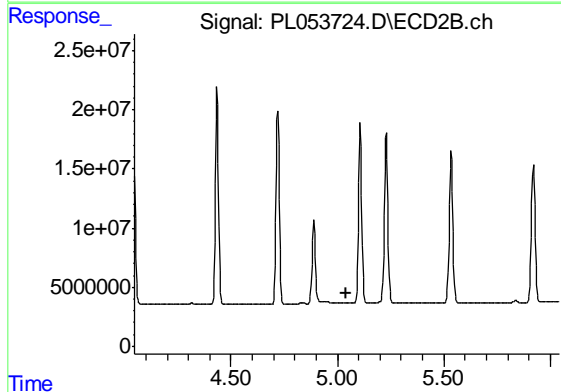
R.T.: 8.234 min  
Delta R.T.: -0.004 min  
Response: 94783309  
Conc: 46.85 ng/ml



#23 Chlordane-1

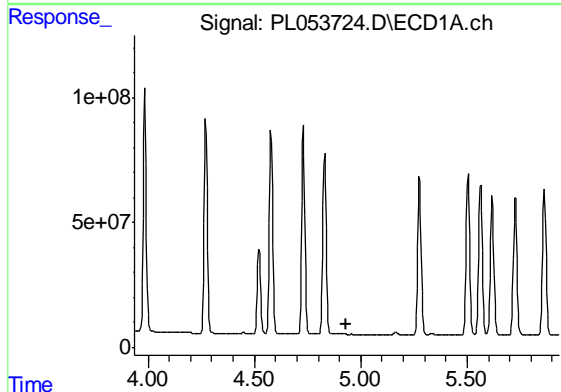
R.T.: 4.450 min  
 Delta R.T.: 0.022 min  
 Response: 4955880  
 Conc: 13.97 ng/ml

Instrument :  
 ECD\_L  
 ClientSampleId :  
 PSTDCCC050



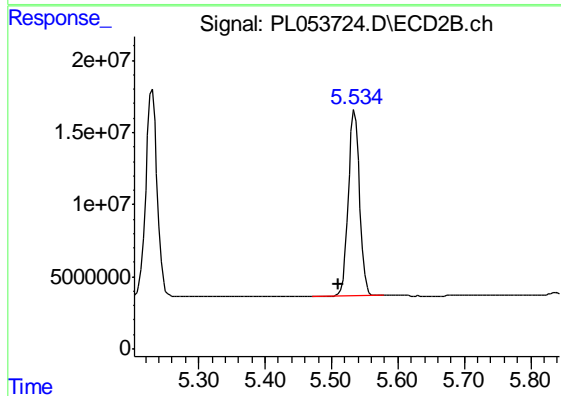
#23 Chlordane-1

R.T.: 0.000 min  
 Exp R.T. : 5.043 min  
 Response: 0  
 Conc: N.D.



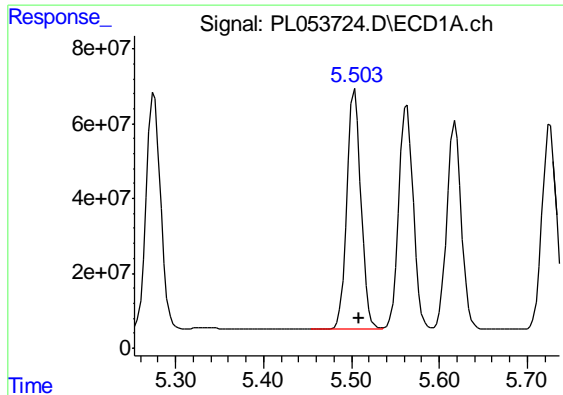
#24 Chlordane-2

R.T.: 0.000 min  
 Exp R.T. : 4.934 min  
 Response: 0  
 Conc: N.D.



#24 Chlordane-2

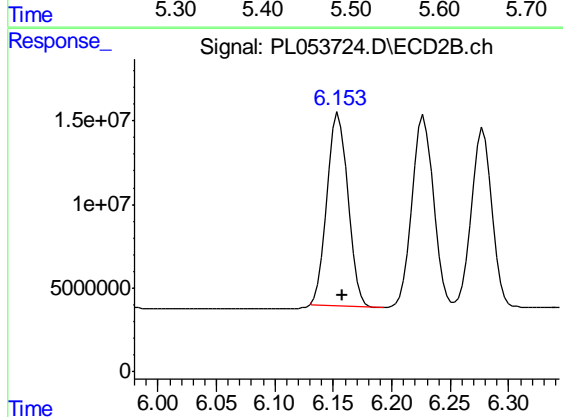
R.T.: 5.535 min  
 Delta R.T.: 0.025 min  
 Response: 150470510  
 Conc: 1531.95 ng/ml



#25 Chlordane-3

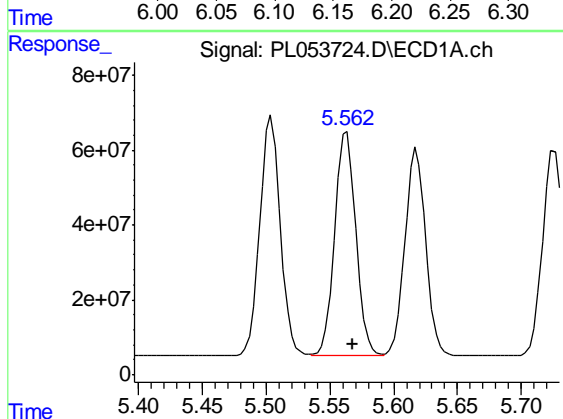
R.T.: 5.504 min  
 Delta R.T.: -0.005 min  
 Response: 716627628  
 Conc: 621.70 ng/ml

Instrument :  
 ECD\_L  
 ClientSampleId :  
 PSTDCCC050



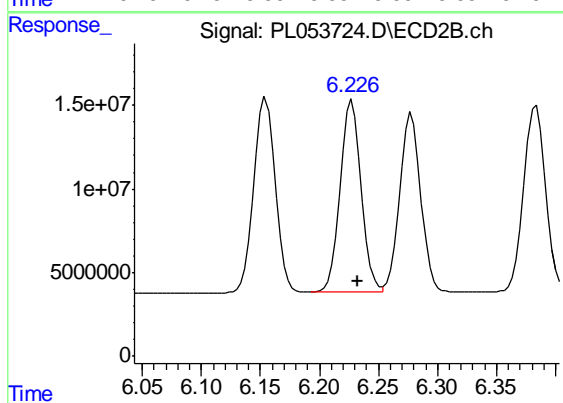
#25 Chlordane-3

R.T.: 6.155 min  
 Delta R.T.: -0.003 min  
 Response: 140975442  
 Conc: 385.99 ng/ml



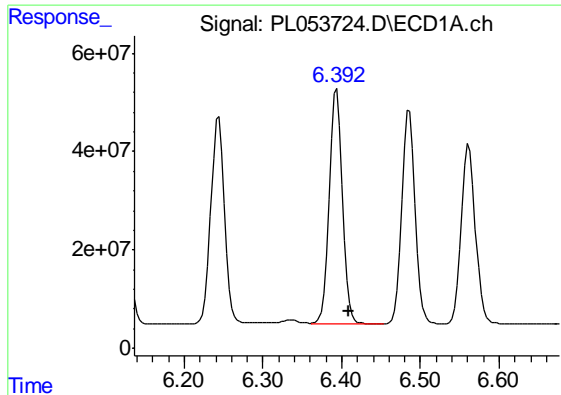
#26 Chlordane-4

R.T.: 5.563 min  
 Delta R.T.: -0.004 min  
 Response: 691358996  
 Conc: 737.49 ng/ml



#26 Chlordane-4

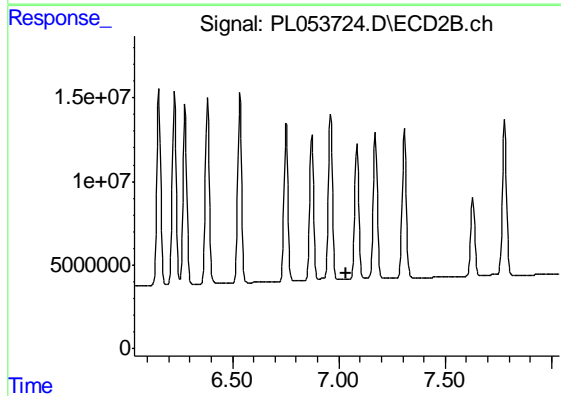
R.T.: 6.228 min  
 Delta R.T.: -0.004 min  
 Response: 144048985  
 Conc: 320.87 ng/ml



#27 Chlordane-5

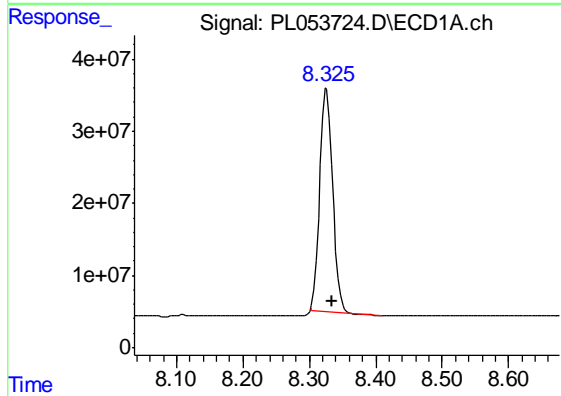
R.T.: 6.393 min  
 Delta R.T.: -0.016 min  
 Response: 565392788  
 Conc: 1546.71 ng/ml

Instrument :  
 ECD\_L  
 ClientSampleId :  
 PSTDCCC050



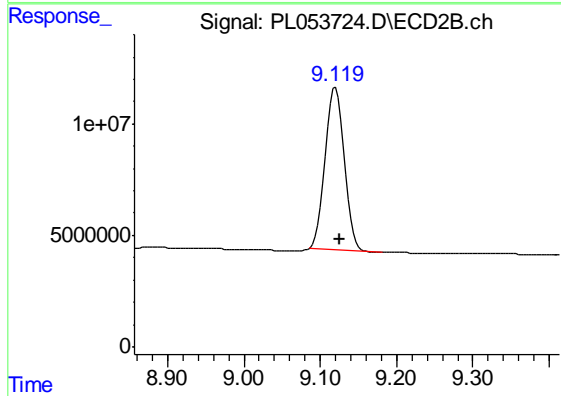
#27 Chlordane-5

R.T.: 0.000 min  
 Exp R.T. : 7.037 min  
 Response: 0  
 Conc: N.D.



#28 Decachlorobiphenyl

R.T.: 8.326 min  
 Delta R.T.: -0.008 min  
 Response: 418793013  
 Conc: 42.68 ng/ml



#28 Decachlorobiphenyl

R.T.: 9.120 min  
 Delta R.T.: -0.006 min  
 Response: 126073909  
 Conc: 44.77 ng/ml