

Data Path : Z:\pestpcbsrv\HPCHEM1\ECD\_L\Data\PL102423\  
 Data File : PL086098.D  
 Signal(s) : Signal #1: ECD1A.ch Signal #2: ECD2B.ch  
 Acq On : 24 Oct 2023 08:45  
 Operator : AR\AJ  
 Sample : PSTDCCC050  
 Misc :  
 ALS Vial : 4 Sample Multiplier: 1

**Instrument :**

ECD\_L

**ClientSampleId :**

PSTDCCC050

**Manual Integrations**

**APPROVED**

Reviewed By :Abdul Mirza 10/25/2023  
 Supervised By :Ankita Jodhani 10/25/2023

Integration File signal 1: autoint1.e  
 Integration File signal 2: autoint2.e  
 Quant Time: Oct 24 11:02:17 2023  
 Quant Method : Z:\pestpcbsrv\HPCHEM1\ECD\_L\methods\PL100323.M  
 Quant Title : GC Extractables  
 QLast Update : Wed Oct 04 05:29:39 2023  
 Response via : Initial Calibration  
 Integrator: ChemStation

Volume Inj. : 1 µl  
 Signal #1 Phase : ZB-MR2 Signal #2 Phase: ZB-MR1  
 Signal #1 Info : 30M x 0.32mm x0.2 Signal #2 Info : 30M x 0.32mm x0.5µm

| Compound                    | RT#1  | RT#2  | Resp#1   | Resp#2   | ng/ml   | ng/ml  |
|-----------------------------|-------|-------|----------|----------|---------|--------|
| -----                       |       |       |          |          |         |        |
| System Monitoring Compounds |       |       |          |          |         |        |
| 1) SA Tetrachlo...          | 3.362 | 2.622 | 138.8E6  | 41463285 | 46.653  | 44.388 |
| 28) SA Decachlor...         | 8.862 | 7.774 | 117.5E6  | 49366567 | 53.930  | 53.486 |
| Target Compounds            |       |       |          |          |         |        |
| 2) A alpha-BHC              | 3.817 | 3.121 | 203.2E6  | 56738426 | 47.334  | 45.097 |
| 3) MA gamma-BHC...          | 4.149 | 3.448 | 202.5E6  | 57224249 | 48.982  | 46.398 |
| 4) MA Heptachlor            | 4.735 | 3.784 | 184.3E6  | 53249218 | 47.639  | 45.784 |
| 5) MB Aldrin                | 5.075 | 4.061 | 188.4E6  | 54677738 | 48.598  | 48.895 |
| 6) B beta-BHC               | 4.352 | 3.750 | 81293498 | 25368252 | 49.161  | 48.730 |
| 7) B delta-BHC              | 4.595 | 3.976 | 195.4E6  | 56377969 | 50.965  | 49.068 |
| 8) B Heptachlo...           | 5.503 | 4.566 | 165.8E6  | 51194302 | 48.053m | 50.970 |
| 9) A Endosulfan I           | 5.889 | 4.933 | 155.3E6  | 47268084 | 48.019  | 44.063 |
| 10) B gamma-Chl...          | 5.762 | 4.818 | 168.8E6  | 51248090 | 49.345  | 51.746 |
| 11) B alpha-Chl...          | 5.842 | 4.881 | 167.7E6  | 51823479 | 49.075  | 47.513 |
| 12) B 4,4'-DDE              | 6.025 | 5.081 | 144.4E6  | 45856002 | 51.652  | 55.845 |
| 13) MA Dieldrin             | 6.165 | 5.199 | 160.4E6  | 50903655 | 48.816  | 52.466 |
| 14) MA Endrin               | 6.393 | 5.474 | 143.0E6  | 46516185 | 50.173  | 51.742 |
| 15) B Endosulfa...          | 6.616 | 5.771 | 140.1E6  | 46471603 | 50.845  | 48.869 |
| 16) A 4,4'-DDD              | 6.543 | 5.637 | 118.0E6  | 38408268 | 58.576  | 55.181 |
| 17) MA 4,4'-DDT             | 6.857 | 5.888 | 114.6E6  | 40296324 | 48.620  | 50.959 |
| 18) B Endrin al...          | 6.747 | 5.953 | 100.7E6  | 37374434 | 49.695  | 50.119 |
| 19) B Endosulfa...          | 6.982 | 6.177 | 129.9E6  | 46145769 | 51.778  | 51.153 |
| 20) A Methoxychlor          | 7.343 | 6.472 | 65888687 | 23742344 | 47.177  | 45.131 |
| 21) B Endrin ke...          | 7.465 | 6.679 | 143.8E6  | 56661319 | 49.934  | 49.296 |
| 22) Mirex                   | 7.937 | 6.856 | 108.3E6  | 46166111 | 48.924  | 48.948 |

(f)=RT Delta > 1/2 Window (#)=Amounts differ by > 25% (m)=manual int.

Data Path : Z:\pestpcbsrv\HPCHEM1\ECD\_L\Data\PL102423\  
 Data File : PL086098.D  
 Signal(s) : Signal #1: ECD1A.ch Signal #2: ECD2B.ch  
 Acq On : 24 Oct 2023 08:45  
 Operator : AR\AJ  
 Sample : PSTDCCC050  
 Misc :  
 ALS Vial : 4 Sample Multiplier: 1

**Instrument :**

ECD\_L

**ClientSampleId :**

PSTDCCC050

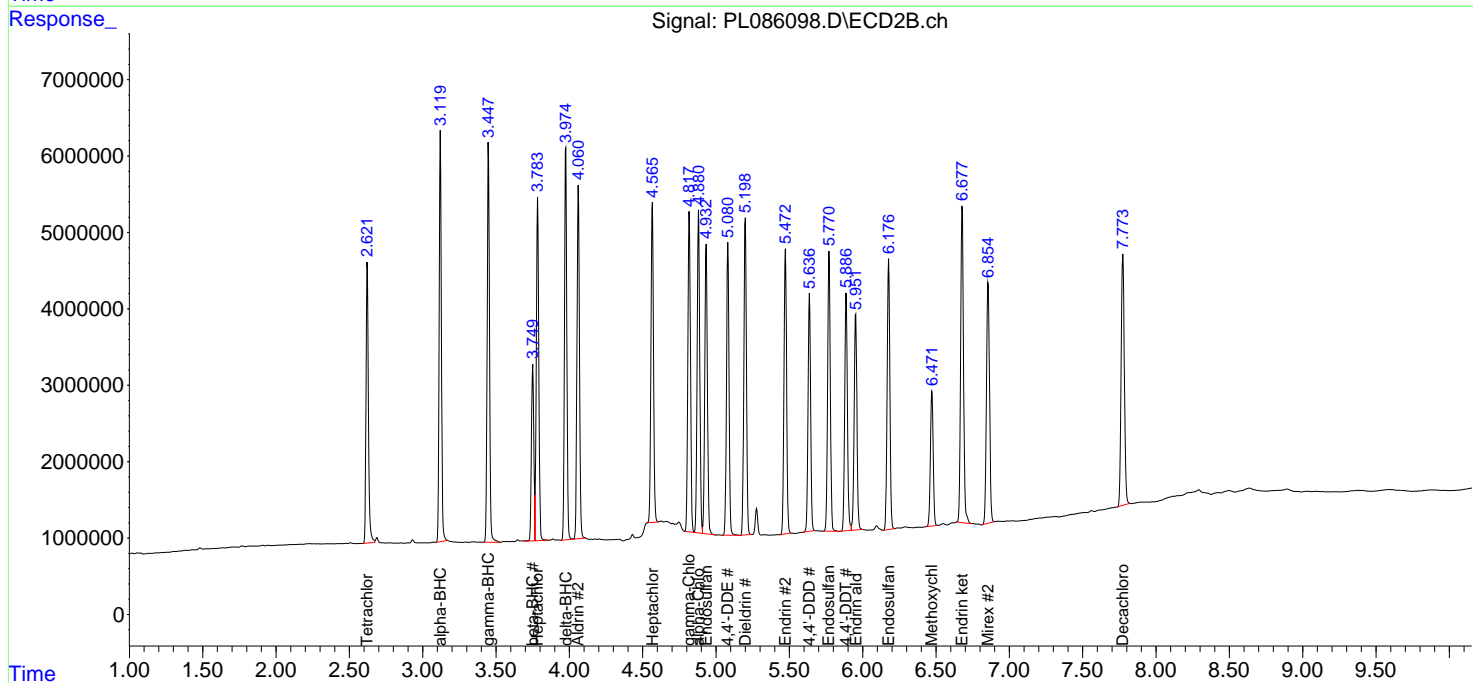
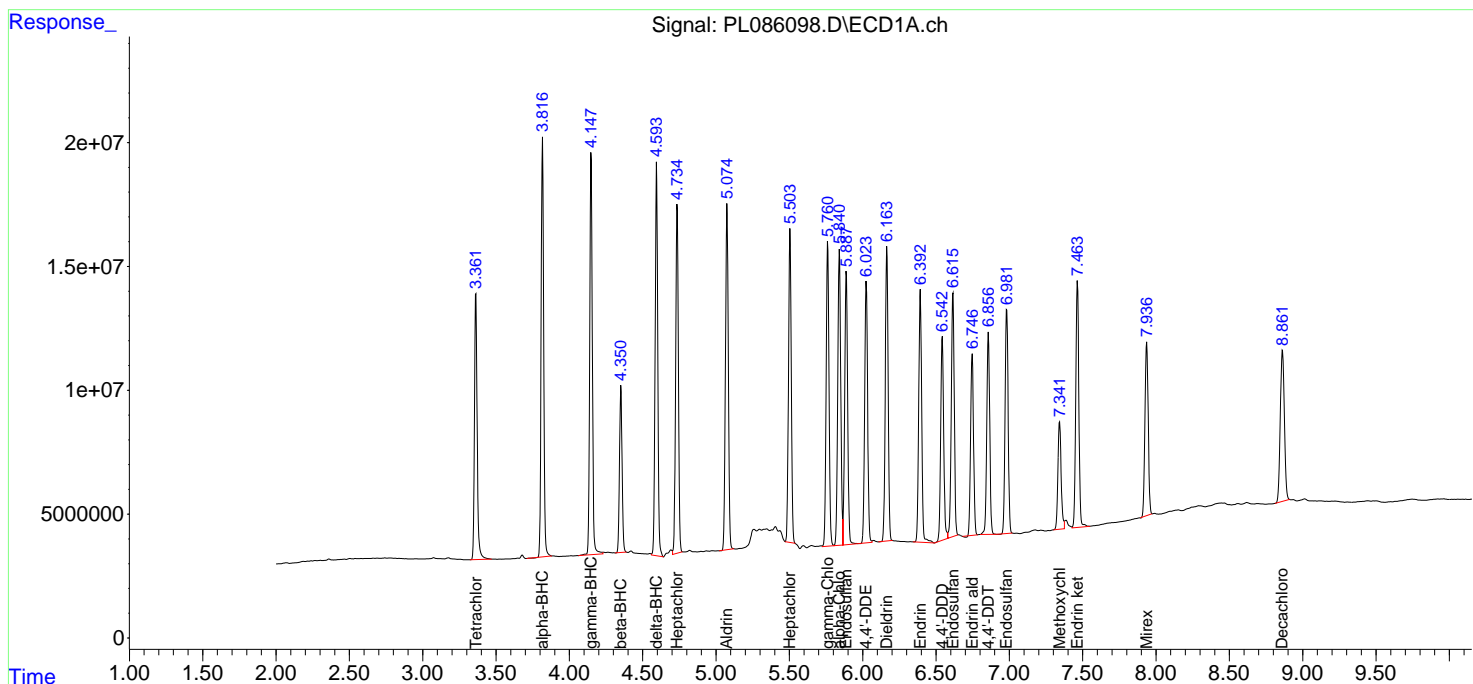
**Manual Integrations**

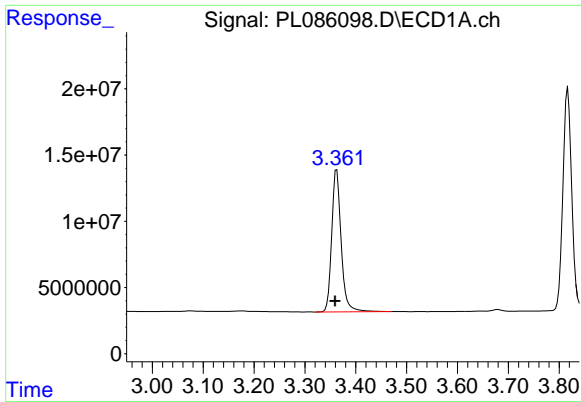
**APPROVED**

Reviewed By :Abdul Mirza 10/25/2023  
 Supervised By :Ankita Jodhani 10/25/2023

Integration File signal 1: autoint1.e  
 Integration File signal 2: autoint2.e  
 Quant Time: Oct 24 11:02:17 2023  
 Quant Method : Z:\pestpcbsrv\HPCHEM1\ECD\_L\methods\PL100323.M  
 Quant Title : GC Extractables  
 QLast Update : Wed Oct 04 05:29:39 2023  
 Response via : Initial Calibration  
 Integrator: ChemStation

Volume Inj. : 1 µl  
 Signal #1 Phase : ZB-MR2 Signal #2 Phase: ZB-MR1  
 Signal #1 Info : 30M x 0.32mm x0.2 Signal #2 Info : 30M x 0.32mm x0.5µm





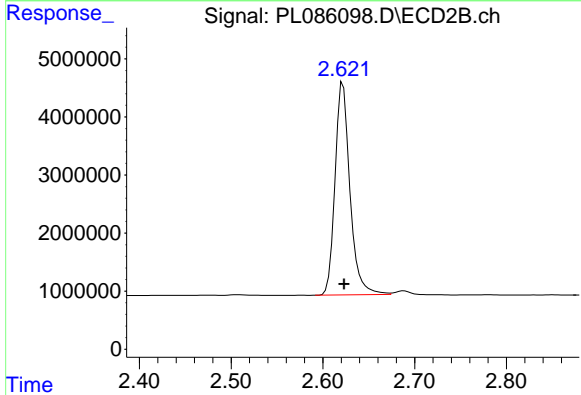
#1 Tetrachloro-m-xylene

R.T.: 3.362 min  
 Delta R.T.: 0.003 min  
 Response: 138752557  
 Conc: 46.65 ng/ml

Instrument :  
 ECD\_L  
 ClientSampleId :  
 PSTDCCC050

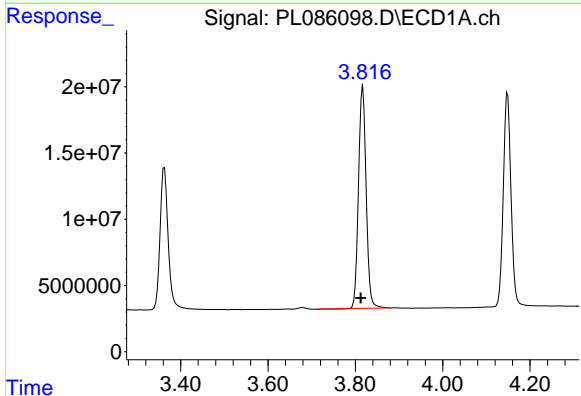
Manual Integrations  
 APPROVED

Reviewed By :Abdul Mirza 10/25/2023  
 Supervised By :Ankita Jodhani 10/25/2023



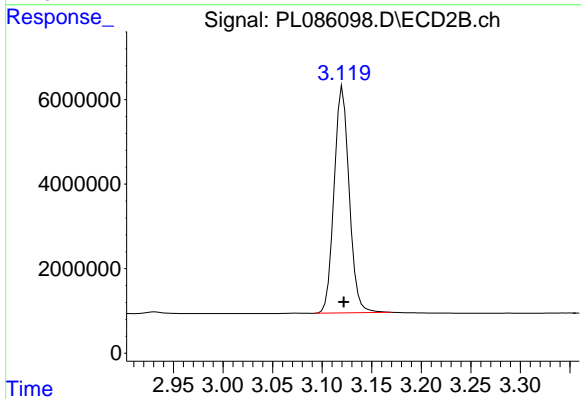
#1 Tetrachloro-m-xylene

R.T.: 2.622 min  
 Delta R.T.: 0.000 min  
 Response: 41463285  
 Conc: 44.39 ng/ml



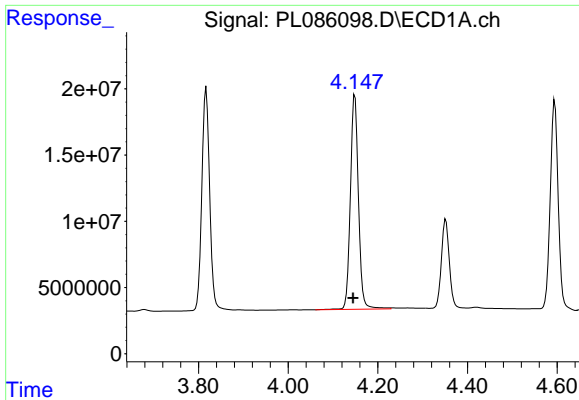
#2 alpha-BHC

R.T.: 3.817 min  
 Delta R.T.: 0.004 min  
 Response: 203153373  
 Conc: 47.33 ng/ml



#2 alpha-BHC

R.T.: 3.121 min  
 Delta R.T.: 0.000 min  
 Response: 56738426  
 Conc: 45.10 ng/ml

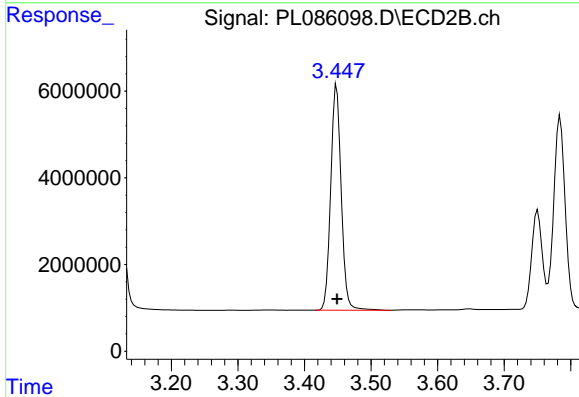


#3 gamma-BHC (Lindane)  
 R.T.: 4.149 min  
 Delta R.T.: 0.004 min  
 Response: 202459824  
 Conc: 48.98 ng/ml

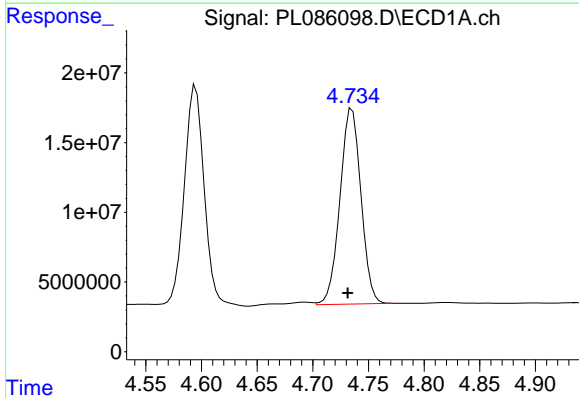
Instrument :  
 ECD\_L  
 ClientSampleId :  
 PSTDCCC050

Manual Integrations  
 APPROVED

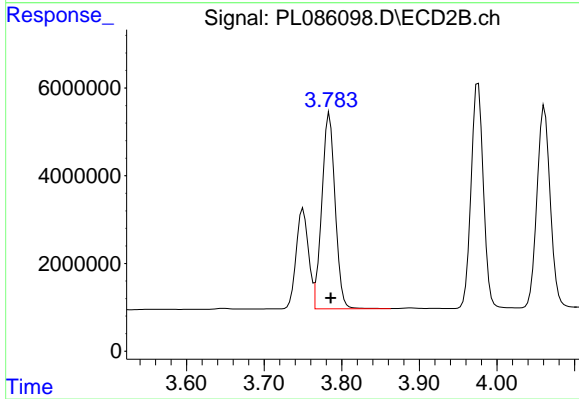
Reviewed By :Abdul Mirza 10/25/2023  
 Supervised By :Ankita Jodhani 10/25/2023



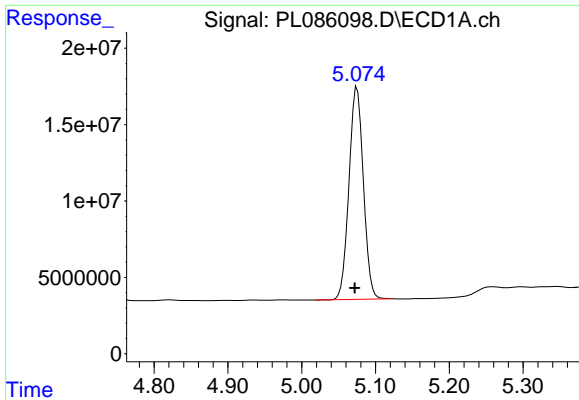
#3 gamma-BHC (Lindane)  
 R.T.: 3.448 min  
 Delta R.T.: 0.000 min  
 Response: 57224249  
 Conc: 46.40 ng/ml



#4 Heptachlor  
 R.T.: 4.735 min  
 Delta R.T.: 0.004 min  
 Response: 184250359  
 Conc: 47.64 ng/ml



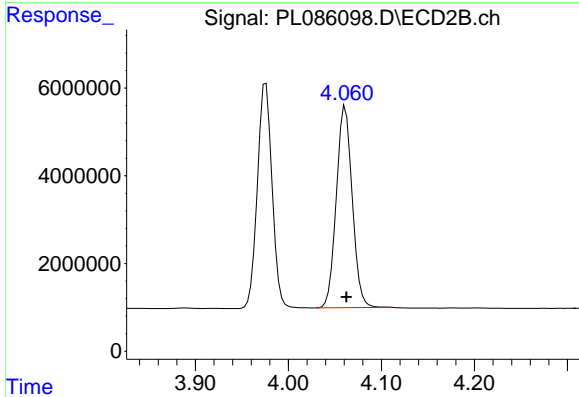
#4 Heptachlor  
 R.T.: 3.784 min  
 Delta R.T.: -0.002 min  
 Response: 53249218  
 Conc: 45.78 ng/ml



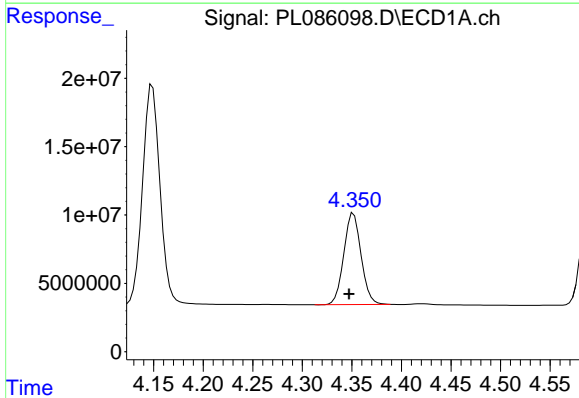
#5 Aldrin  
 R.T.: 5.075 min  
 Delta R.T.: 0.003 min  
 Response: 188383668  
 Conc: 48.60 ng/ml

Instrument :  
 ECD\_L  
 ClientSampleId :  
 PSTDCCC050

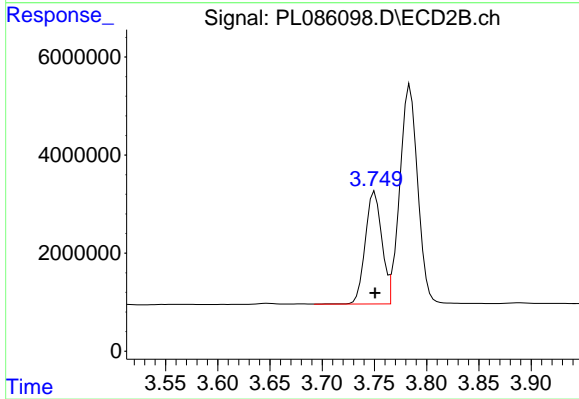
**Manual Integrations**  
**APPROVED**  
 Reviewed By :Abdul Mirza 10/25/2023  
 Supervised By :Ankita Jodhani 10/25/2023



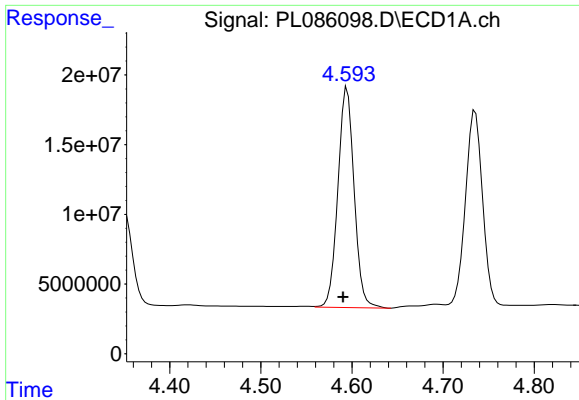
#5 Aldrin  
 R.T.: 4.061 min  
 Delta R.T.: -0.001 min  
 Response: 54677738  
 Conc: 48.90 ng/ml



#6 beta-BHC  
 R.T.: 4.352 min  
 Delta R.T.: 0.005 min  
 Response: 81293498  
 Conc: 49.16 ng/ml



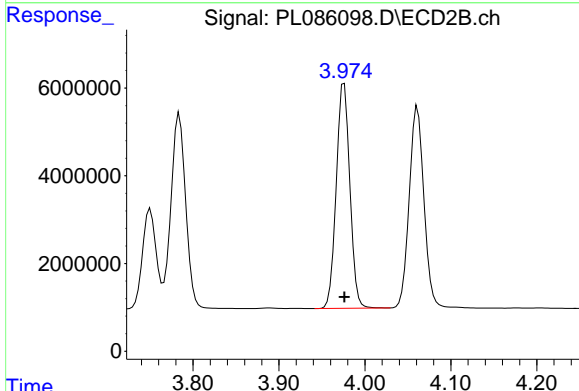
#6 beta-BHC  
 R.T.: 3.750 min  
 Delta R.T.: 0.000 min  
 Response: 25368252  
 Conc: 48.73 ng/ml



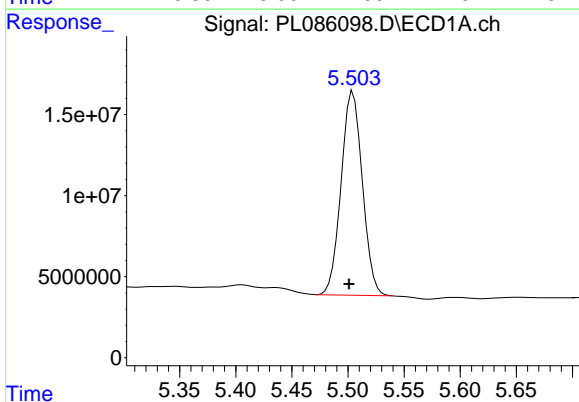
#7 delta-BHC  
 R.T.: 4.595 min  
 Delta R.T.: 0.004 min  
 Response: 195418957  
 Conc: 50.96 ng/ml

Instrument :  
 ECD\_L  
 ClientSampleId :  
 PSTDCCC050

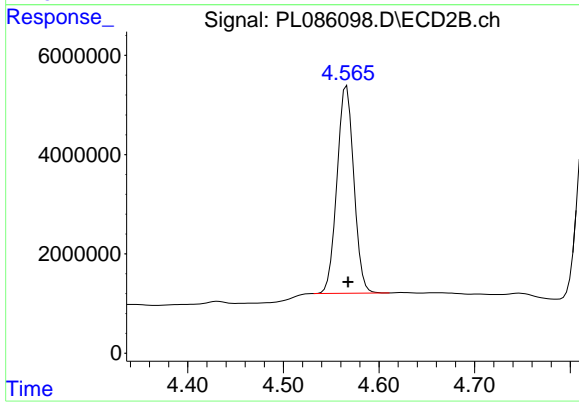
Manual Integrations  
**APPROVED**  
 Reviewed By :Abdul Mirza 10/25/2023  
 Supervised By :Ankita Jodhani 10/25/2023



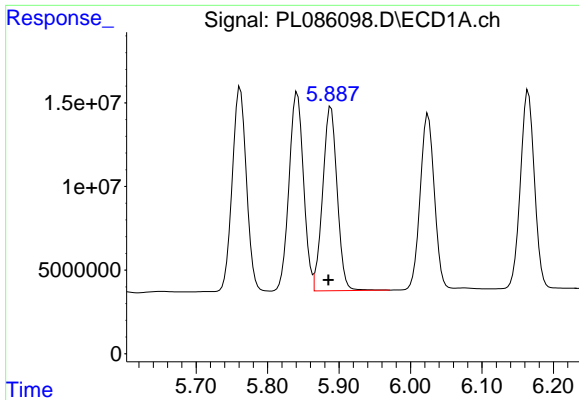
#7 delta-BHC  
 R.T.: 3.976 min  
 Delta R.T.: 0.000 min  
 Response: 56377969  
 Conc: 49.07 ng/ml



#8 Heptachlor epoxide  
 R.T.: 5.503 min  
 Delta R.T.: 0.002 min  
 Response: 165773259  
 Conc: 48.05 ng/ml m



#8 Heptachlor epoxide  
 R.T.: 4.566 min  
 Delta R.T.: -0.001 min  
 Response: 51194302  
 Conc: 50.97 ng/ml



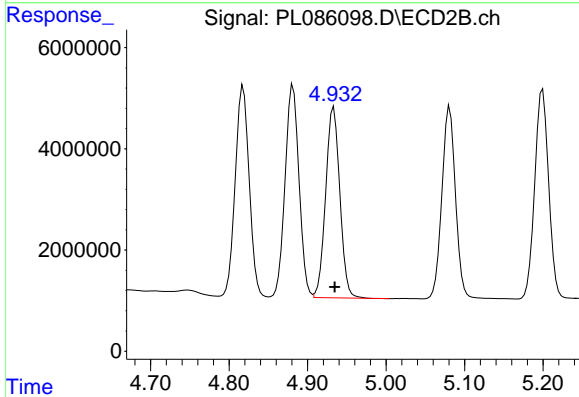
#9 Endosulfan I

R.T.: 5.889 min  
 Delta R.T.: 0.004 min  
 Response: 155295044  
 Conc: 48.02 ng/ml

Instrument :  
 ECD\_L  
 ClientSampleId :  
 PSTDCCC050

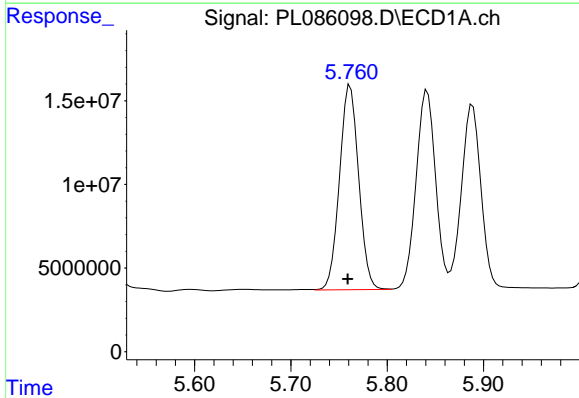
Manual Integrations  
 APPROVED

Reviewed By :Abdul Mirza 10/25/2023  
 Supervised By :Ankita Jodhani 10/25/2023



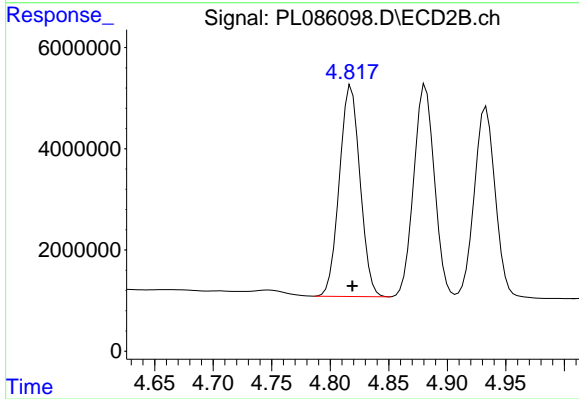
#9 Endosulfan I

R.T.: 4.933 min  
 Delta R.T.: -0.001 min  
 Response: 47268084  
 Conc: 44.06 ng/ml



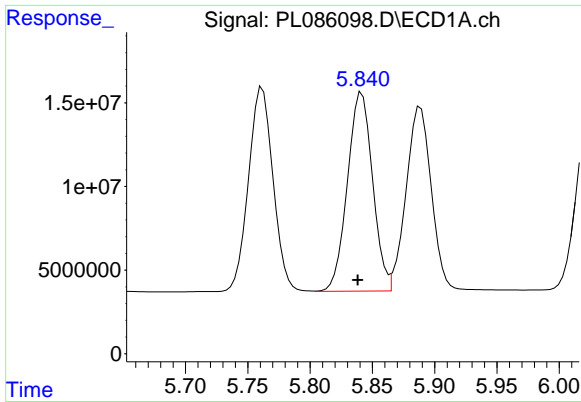
#10 gamma-Chlordane

R.T.: 5.762 min  
 Delta R.T.: 0.003 min  
 Response: 168831635  
 Conc: 49.35 ng/ml



#10 gamma-Chlordane

R.T.: 4.818 min  
 Delta R.T.: 0.000 min  
 Response: 51248090  
 Conc: 51.75 ng/ml



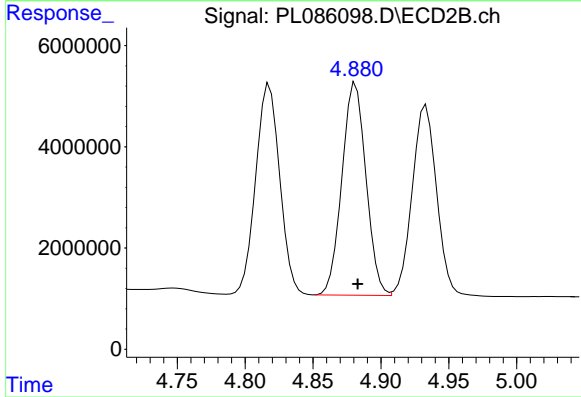
#11 alpha-Chlordane

R.T.: 5.842 min  
 Delta R.T.: 0.003 min  
 Response: 167721891  
 Conc: 49.08 ng/ml

Instrument :  
 ECD\_L  
 ClientSampleId :  
 PSTDCCC050

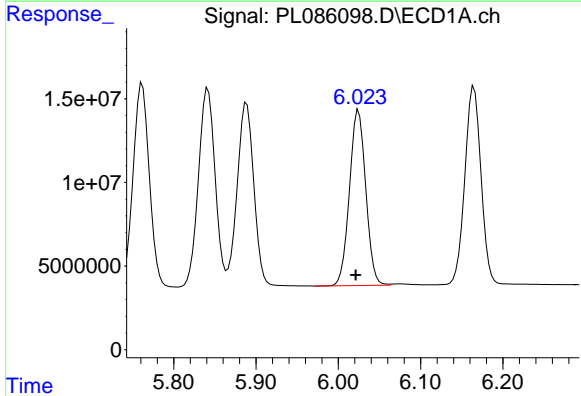
Manual Integrations  
 APPROVED

Reviewed By :Abdul Mirza 10/25/2023  
 Supervised By :Ankita Jodhani 10/25/2023



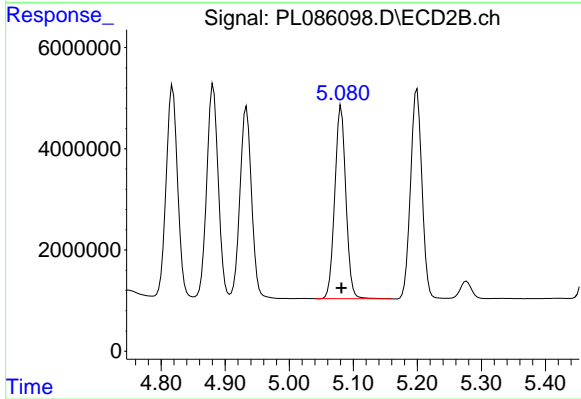
#11 alpha-Chlordane

R.T.: 4.881 min  
 Delta R.T.: -0.001 min  
 Response: 51823479  
 Conc: 47.51 ng/ml



#12 4,4'-DDE

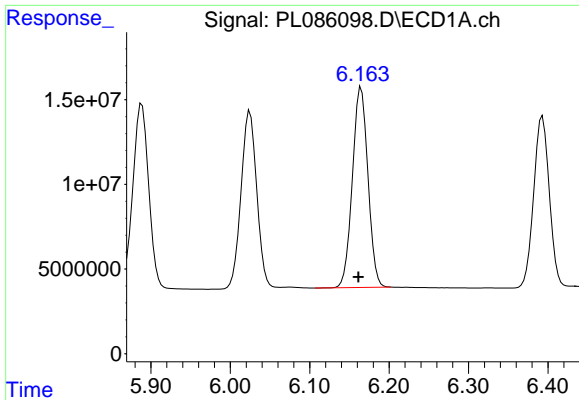
R.T.: 6.025 min  
 Delta R.T.: 0.004 min  
 Response: 144446645  
 Conc: 51.65 ng/ml



#12 4,4'-DDE

R.T.: 5.081 min  
 Delta R.T.: 0.000 min  
 Response: 45856002  
 Conc: 55.84 ng/ml





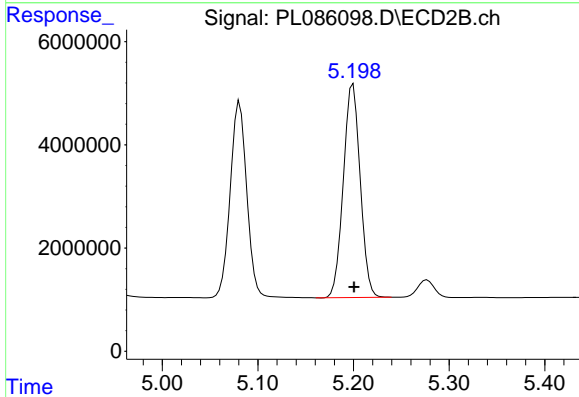
#13 Dieldrin

R.T.: 6.165 min  
 Delta R.T.: 0.003 min  
 Response: 160408680  
 Conc: 48.82 ng/ml

Instrument :  
 ECD\_L  
 ClientSampleId :  
 PSTDCCC050

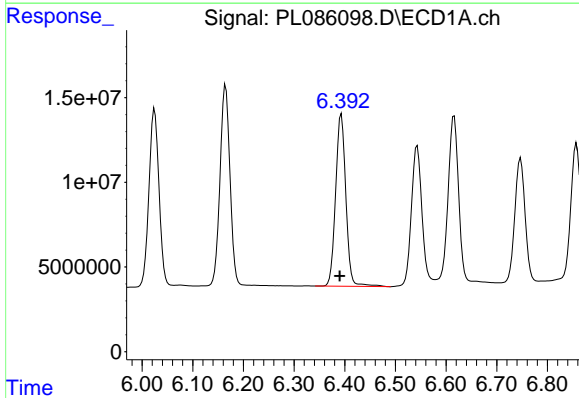
Manual Integrations  
 APPROVED

Reviewed By :Abdul Mirza 10/25/2023  
 Supervised By :Ankita Jodhani 10/25/2023



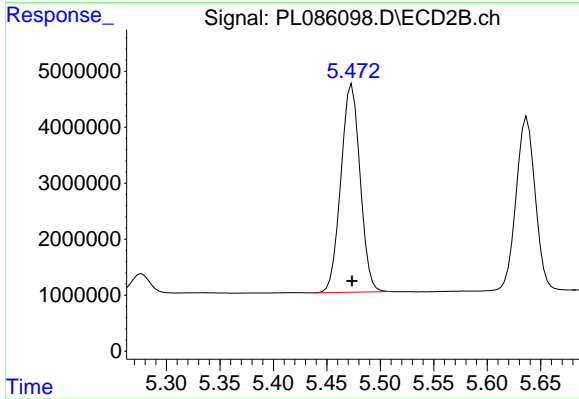
#13 Dieldrin

R.T.: 5.199 min  
 Delta R.T.: 0.000 min  
 Response: 50903655  
 Conc: 52.47 ng/ml



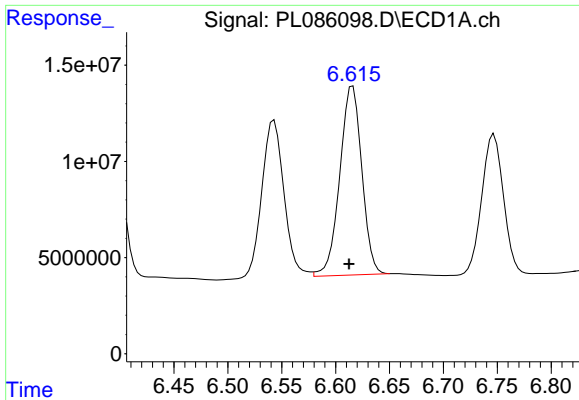
#14 Endrin

R.T.: 6.393 min  
 Delta R.T.: 0.003 min  
 Response: 142980697  
 Conc: 50.17 ng/ml



#14 Endrin

R.T.: 5.474 min  
 Delta R.T.: 0.000 min  
 Response: 46516185  
 Conc: 51.74 ng/ml



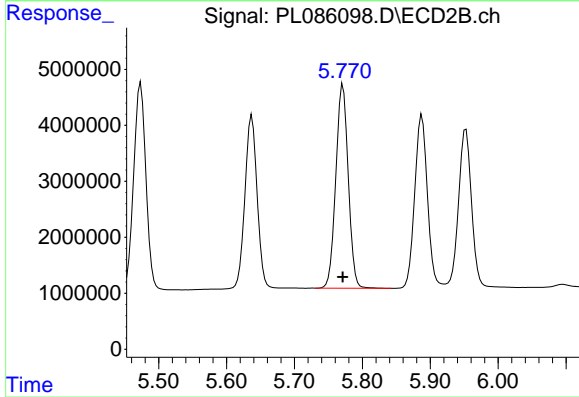
#15 Endosulfan II

R.T.: 6.616 min  
 Delta R.T.: 0.003 min  
 Response: 140104814  
 Conc: 50.85 ng/ml

Instrument :  
 ECD\_L  
 ClientSampleId :  
 PSTDCCC050

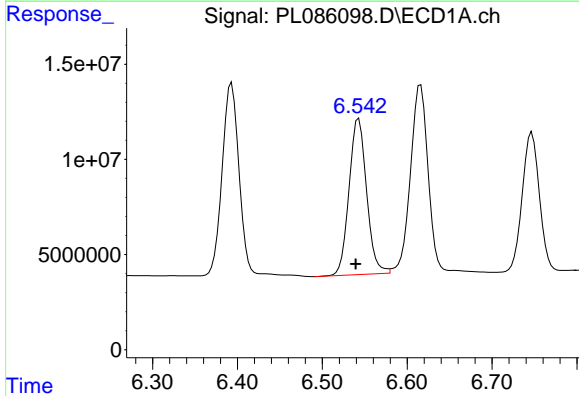
Manual Integrations  
 APPROVED

Reviewed By :Abdul Mirza 10/25/2023  
 Supervised By :Ankita Jodhani 10/25/2023



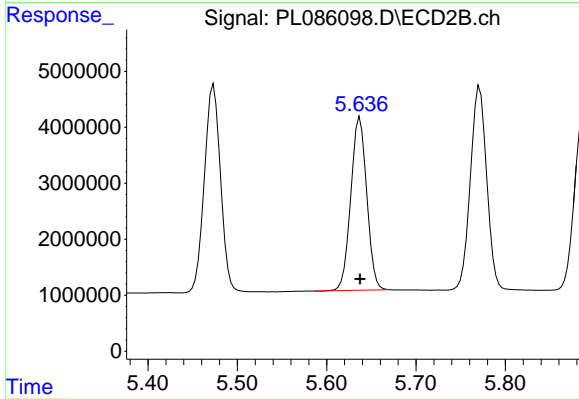
#15 Endosulfan II

R.T.: 5.771 min  
 Delta R.T.: 0.000 min  
 Response: 46471603  
 Conc: 48.87 ng/ml



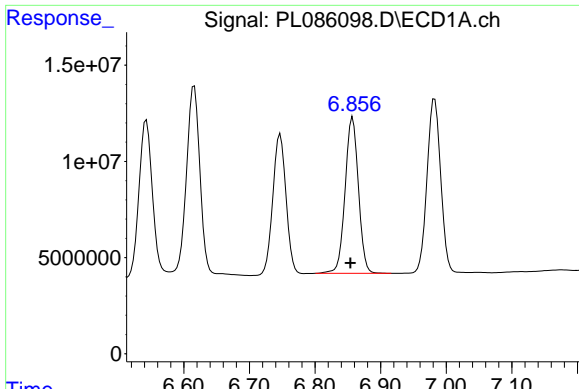
#16 4,4'-DDD

R.T.: 6.543 min  
 Delta R.T.: 0.004 min  
 Response: 118010674  
 Conc: 58.58 ng/ml



#16 4,4'-DDD

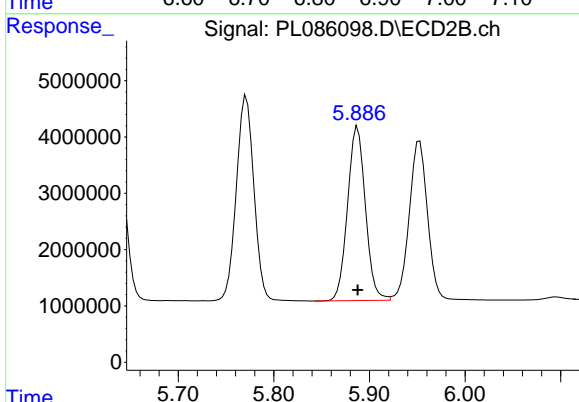
R.T.: 5.637 min  
 Delta R.T.: 0.000 min  
 Response: 38408268  
 Conc: 55.18 ng/ml



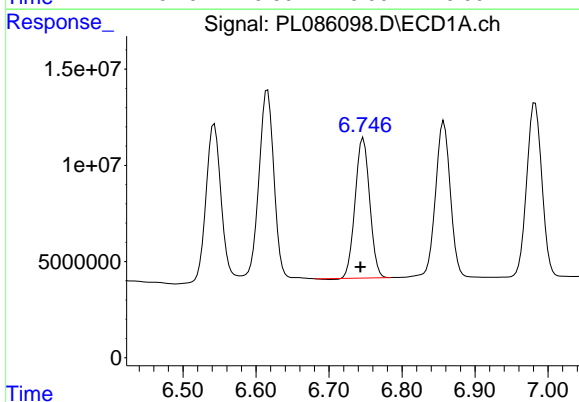
#17 4,4'-DDT  
 R.T.: 6.857 min  
 Delta R.T.: 0.003 min  
 Response: 114602537  
 Conc: 48.62 ng/ml

Instrument :  
 ECD\_L  
 ClientSampleId :  
 PSTDCCC050

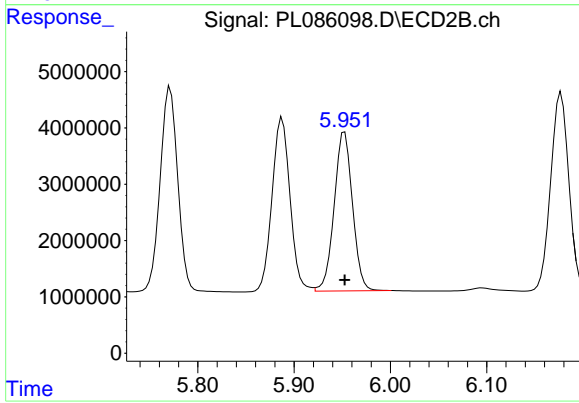
Manual Integrations  
**APPROVED**  
 Reviewed By :Abdul Mirza 10/25/2023  
 Supervised By :Ankita Jodhani 10/25/2023



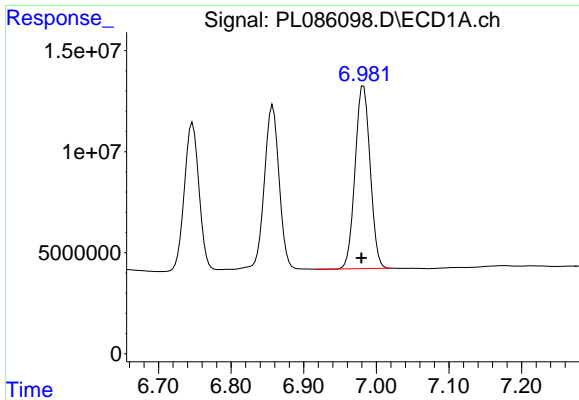
#17 4,4'-DDT  
 R.T.: 5.888 min  
 Delta R.T.: 0.000 min  
 Response: 40296324  
 Conc: 50.96 ng/ml



#18 Endrin aldehyde  
 R.T.: 6.747 min  
 Delta R.T.: 0.004 min  
 Response: 100720270  
 Conc: 49.70 ng/ml



#18 Endrin aldehyde  
 R.T.: 5.953 min  
 Delta R.T.: 0.000 min  
 Response: 37374434  
 Conc: 50.12 ng/ml



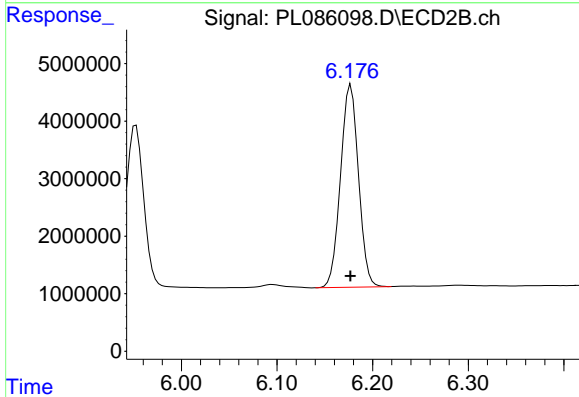
#19 Endosulfan Sulfate

R.T.: 6.982 min  
 Delta R.T.: 0.003 min  
 Response: 129947829  
 Conc: 51.78 ng/ml

Instrument :  
 ECD\_L  
 ClientSampleId :  
 PSTDCCC050

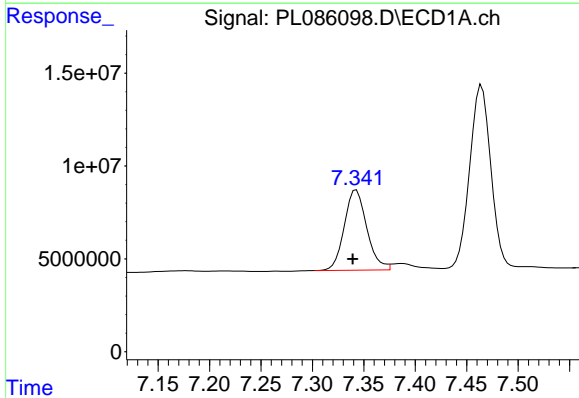
Manual Integrations  
 APPROVED

Reviewed By :Abdul Mirza 10/25/2023  
 Supervised By :Ankita Jodhani 10/25/2023



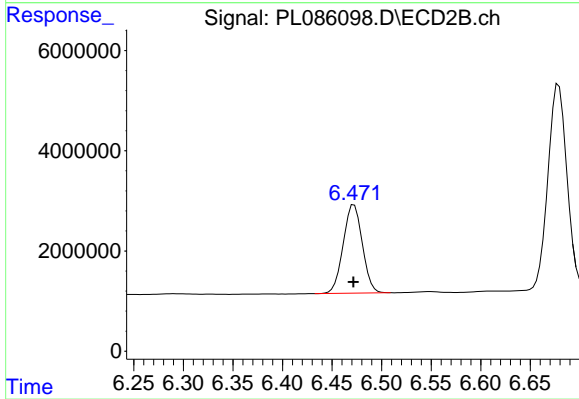
#19 Endosulfan Sulfate

R.T.: 6.177 min  
 Delta R.T.: 0.000 min  
 Response: 46145769  
 Conc: 51.15 ng/ml



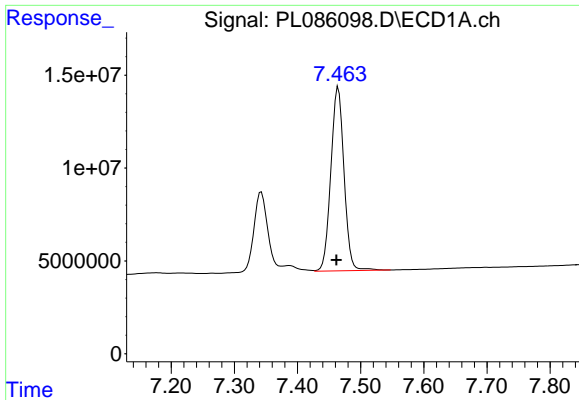
#20 Methoxychlor

R.T.: 7.343 min  
 Delta R.T.: 0.003 min  
 Response: 65888687  
 Conc: 47.18 ng/ml



#20 Methoxychlor

R.T.: 6.472 min  
 Delta R.T.: 0.000 min  
 Response: 23742344  
 Conc: 45.13 ng/ml



#21 Endrin ketone

R.T.: 7.465 min  
 Delta R.T.: 0.003 min  
 Response: 143822581  
 Conc: 49.93 ng/ml

Instrument :

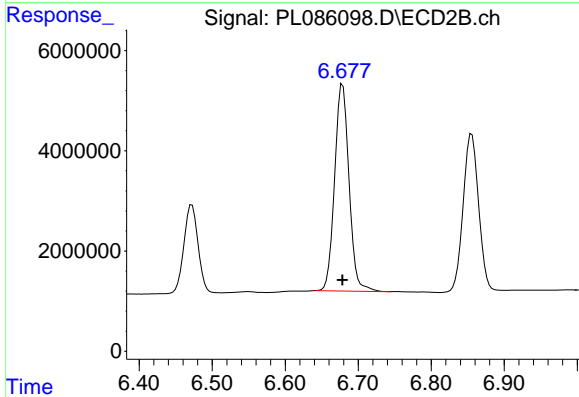
ECD\_L

ClientSampleId :

PSTDCCC050

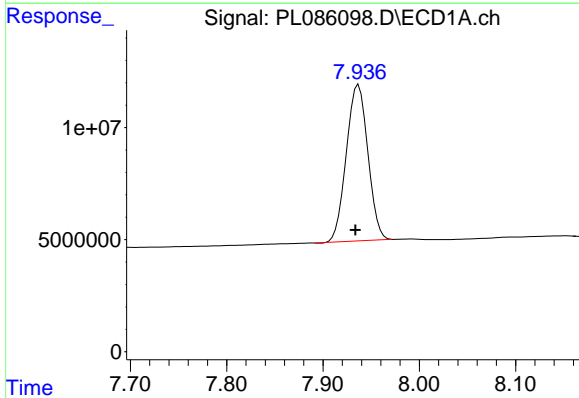
Manual Integrations  
 APPROVED

Reviewed By :Abdul Mirza 10/25/2023  
 Supervised By :Ankita Jodhani 10/25/2023



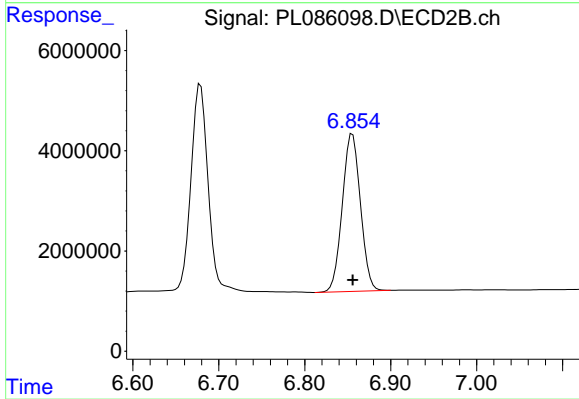
#21 Endrin ketone

R.T.: 6.679 min  
 Delta R.T.: 0.000 min  
 Response: 56661319  
 Conc: 49.30 ng/ml



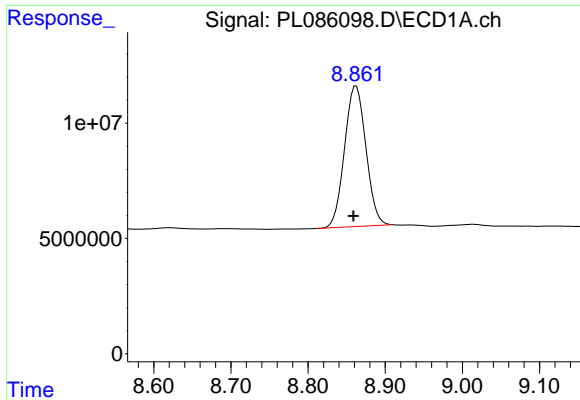
#22 Mirex

R.T.: 7.937 min  
 Delta R.T.: 0.003 min  
 Response: 108316252  
 Conc: 48.92 ng/ml



#22 Mirex

R.T.: 6.856 min  
 Delta R.T.: 0.000 min  
 Response: 46166111  
 Conc: 48.95 ng/ml



#28 Decachlorobiphenyl

R.T.: 8.862 min  
Delta R.T.: 0.004 min  
Response: 117462772  
Conc: 53.93 ng/ml

Instrument :

ECD\_L

ClientSampleId :

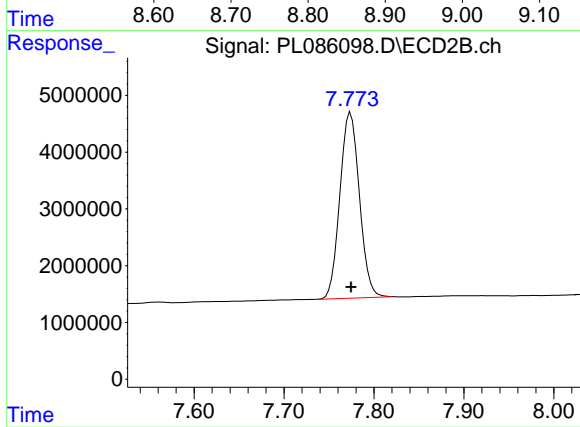
PSTDCCC050

Manual Integrations

APPROVED

Reviewed By :Abdul Mirza 10/25/2023

Supervised By :Ankita Jodhani 10/25/2023



#28 Decachlorobiphenyl

R.T.: 7.774 min  
Delta R.T.: 0.000 min  
Response: 49366567  
Conc: 53.49 ng/ml