

Data Path : Z:\pestpcbsrv\HPCHEM1\ECD_L\Data\PL102423\
 Data File : PL086105.D
 Signal(s) : Signal #1: ECD1A.ch Signal #2: ECD2B.ch
 Acq On : 24 Oct 2023 10:39
 Operator : AR\AJ
 Sample : 04977-09
 Misc :
 ALS Vial : 11 Sample Multiplier: 1

Instrument :
 ECD_L
 ClientSampleId :
 NB-406-COMP-02

Integration File signal 1: autoint1.e
 Integration File signal 2: autoint2.e
 Quant Time: Oct 24 11:05:54 2023
 Quant Method : Z:\pestpcbsrv\HPCHEM1\ECD_L\methods\PL100323.M
 Quant Title : GC Extractables
 QLast Update : Wed Oct 04 05:29:39 2023
 Response via : Initial Calibration
 Integrator: ChemStation

Volume Inj. : 1 µl
 Signal #1 Phase : ZB-MR2 Signal #2 Phase: ZB-MR1
 Signal #1 Info : 30M x 0.32mm x0.2 Signal #2 Info : 30M x 0.32mm x0.5µm

Compound	RT#1	RT#2	Resp#1	Resp#2	ng/ml	ng/ml

System Monitoring Compounds						
1) SA Tetrachlo...	3.355	2.622	64796365	20281969	21.786	21.713
28) SA Decachlor...	8.854	7.771	62600304	26686056	28.741	28.913

Target Compounds

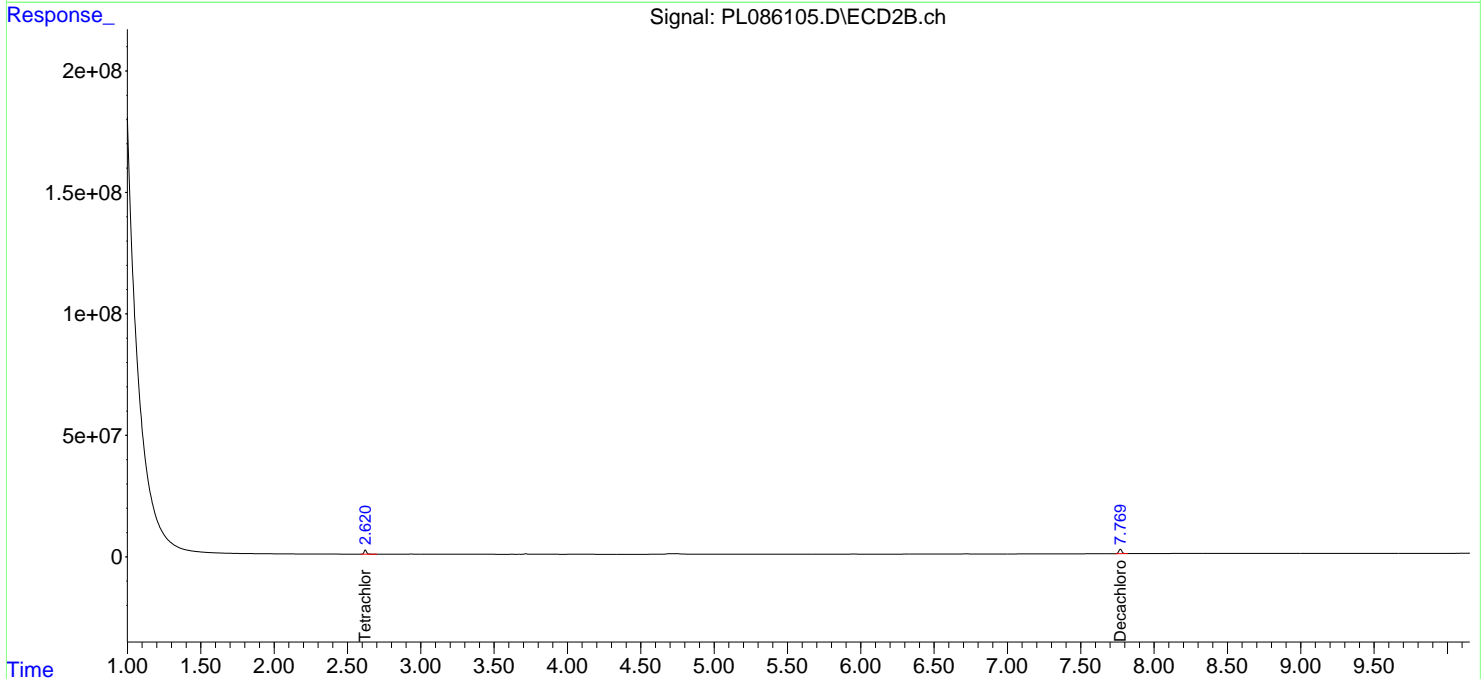
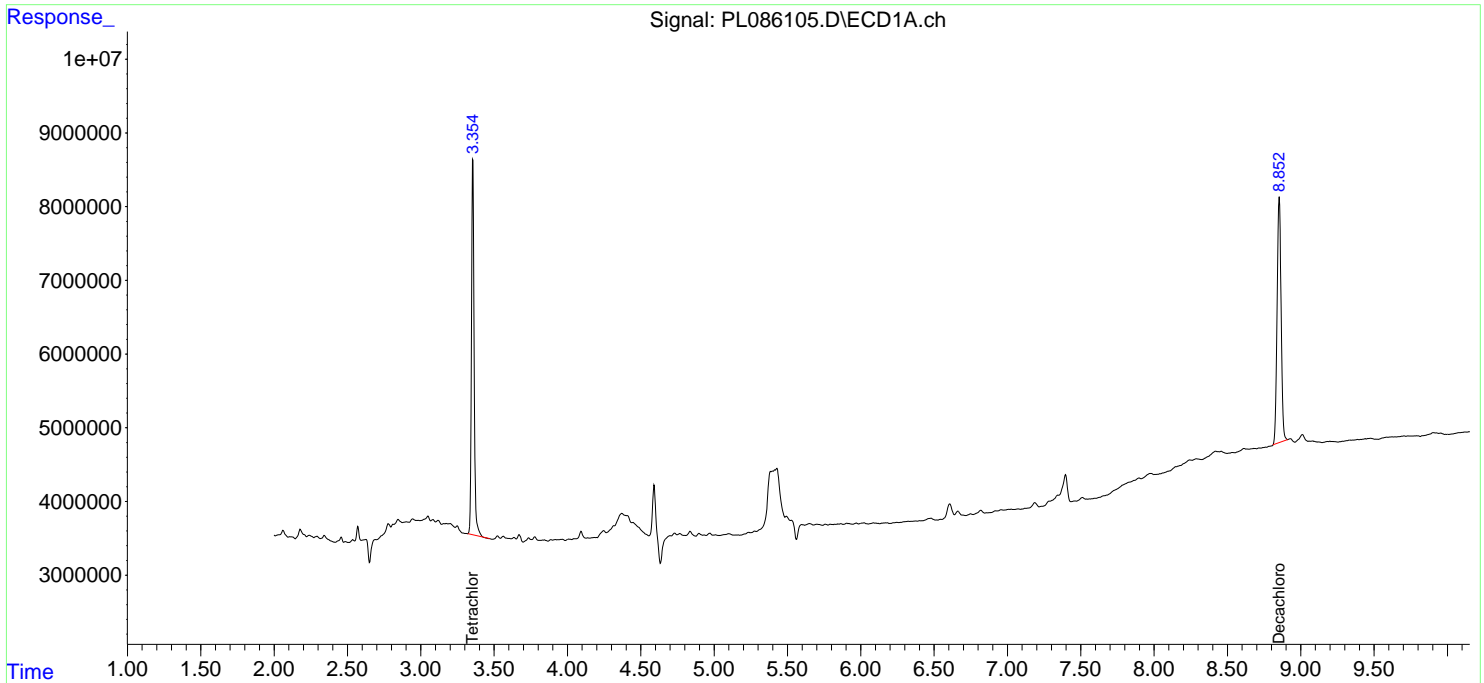
(f)=RT Delta > 1/2 Window (#)=Amounts differ by > 25% (m)=manual int.

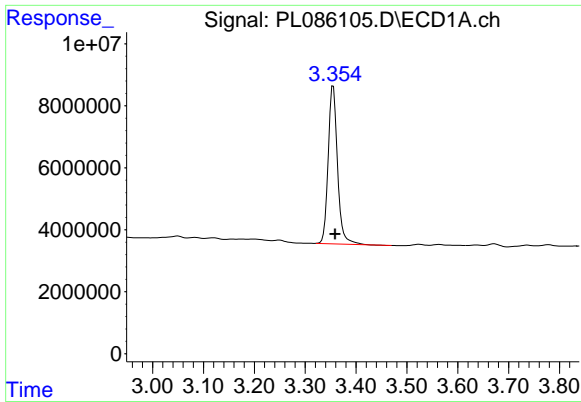
Data Path : Z:\pestpcbsrv\HPCHEM1\ECD_L\Data\PL102423\
 Data File : PL086105.D
 Signal(s) : Signal #1: ECD1A.ch Signal #2: ECD2B.ch
 Acq On : 24 Oct 2023 10:39
 Operator : AR\AJ
 Sample : 04977-09
 Misc :
 ALS Vial : 11 Sample Multiplier: 1

Instrument :
 ECD_L
 ClientSampleId :
 NB-406-COMP-02

Integration File signal 1: autoint1.e
 Integration File signal 2: autoint2.e
 Quant Time: Oct 24 11:05:54 2023
 Quant Method : Z:\pestpcbsrv\HPCHEM1\ECD_L\methods\PL100323.M
 Quant Title : GC Extractables
 QLast Update : Wed Oct 04 05:29:39 2023
 Response via : Initial Calibration
 Integrator: ChemStation

Volume Inj. : 1 µl
 Signal #1 Phase : ZB-MR2 Signal #2 Phase: ZB-MR1
 Signal #1 Info : 30M x 0.32mm x0.2 Signal #2 Info : 30M x 0.32mm x0.5µm

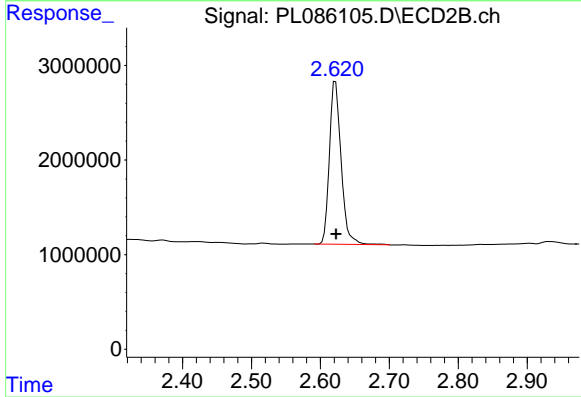




#1 Tetrachloro-m-xylene

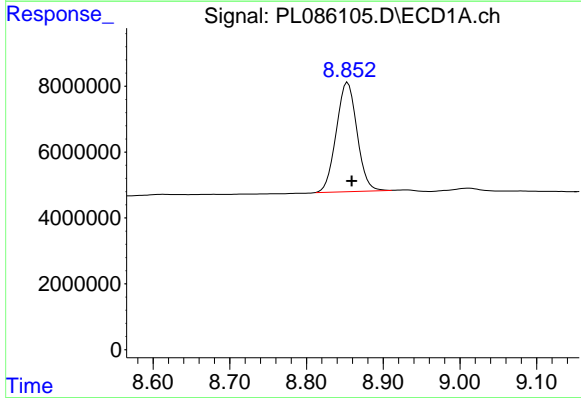
R.T.: 3.355 min
 Delta R.T.: -0.004 min
 Response: 64796365
 Conc: 21.79 ng/ml

Instrument :
 ECD_L
 ClientSampleId :
 NB-406-COMP-02



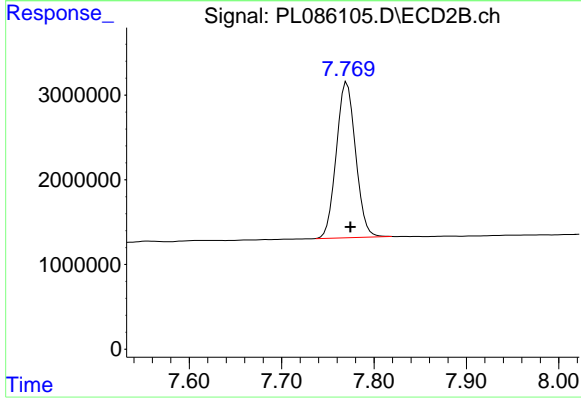
#1 Tetrachloro-m-xylene

R.T.: 2.622 min
 Delta R.T.: 0.000 min
 Response: 20281969
 Conc: 21.71 ng/ml



#28 Decachlorobiphenyl

R.T.: 8.854 min
 Delta R.T.: -0.005 min
 Response: 62600304
 Conc: 28.74 ng/ml



#28 Decachlorobiphenyl

R.T.: 7.771 min
 Delta R.T.: -0.004 min
 Response: 26686056
 Conc: 28.91 ng/ml