

Data Path : Z:\pestpcbsrv\HPCHEM1\ECD\_L\Data\PL102423\  
 Data File : PL086106.D  
 Signal(s) : Signal #1: ECD1A.ch Signal #2: ECD2B.ch  
 Acq On : 24 Oct 2023 10:53  
 Operator : AR\AJ  
 Sample : 04978-03  
 Misc :  
 ALS Vial : 12 Sample Multiplier: 1

Instrument :  
 ECD\_L  
 ClientSampleId :  
 NB-406-COMP-03

Integration File signal 1: autoint1.e  
 Integration File signal 2: autoint2.e  
 Quant Time: Oct 24 11:34:56 2023  
 Quant Method : Z:\pestpcbsrv\HPCHEM1\ECD\_L\methods\PL100323.M  
 Quant Title : GC Extractables  
 QLast Update : Wed Oct 04 05:29:39 2023  
 Response via : Initial Calibration  
 Integrator: ChemStation

Volume Inj. : 1 µl  
 Signal #1 Phase : ZB-MR2 Signal #2 Phase: ZB-MR1  
 Signal #1 Info : 30M x 0.32mm x0.2 Signal #2 Info : 30M x 0.32mm x0.5µm

Compound	RT#1	RT#2	Resp#1	Resp#2	ng/ml	ng/ml
-----						
System Monitoring Compounds						
1) SA Tetrachlo...	3.355	2.622	60461521	18273671	20.329	19.563
28) SA Decachlor...	8.854	7.771	55408427	24063860	25.439	26.072

Target Compounds

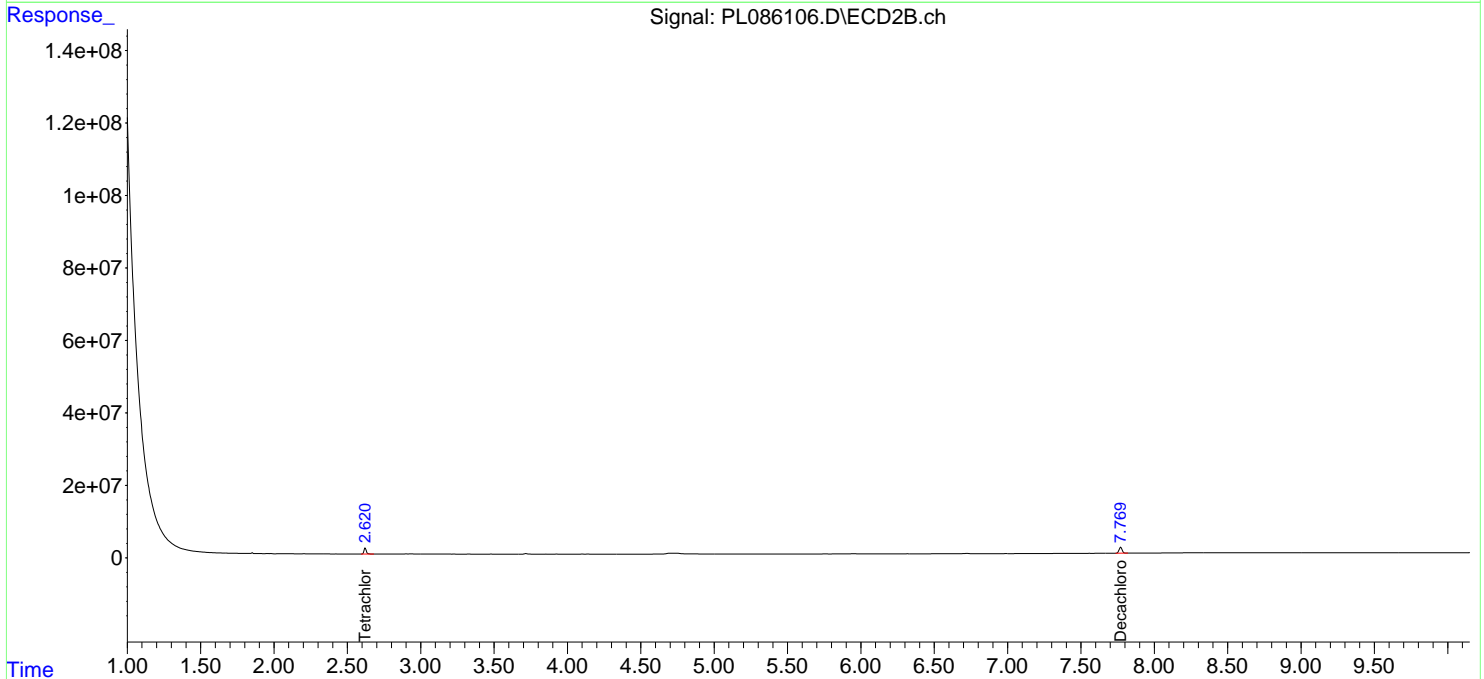
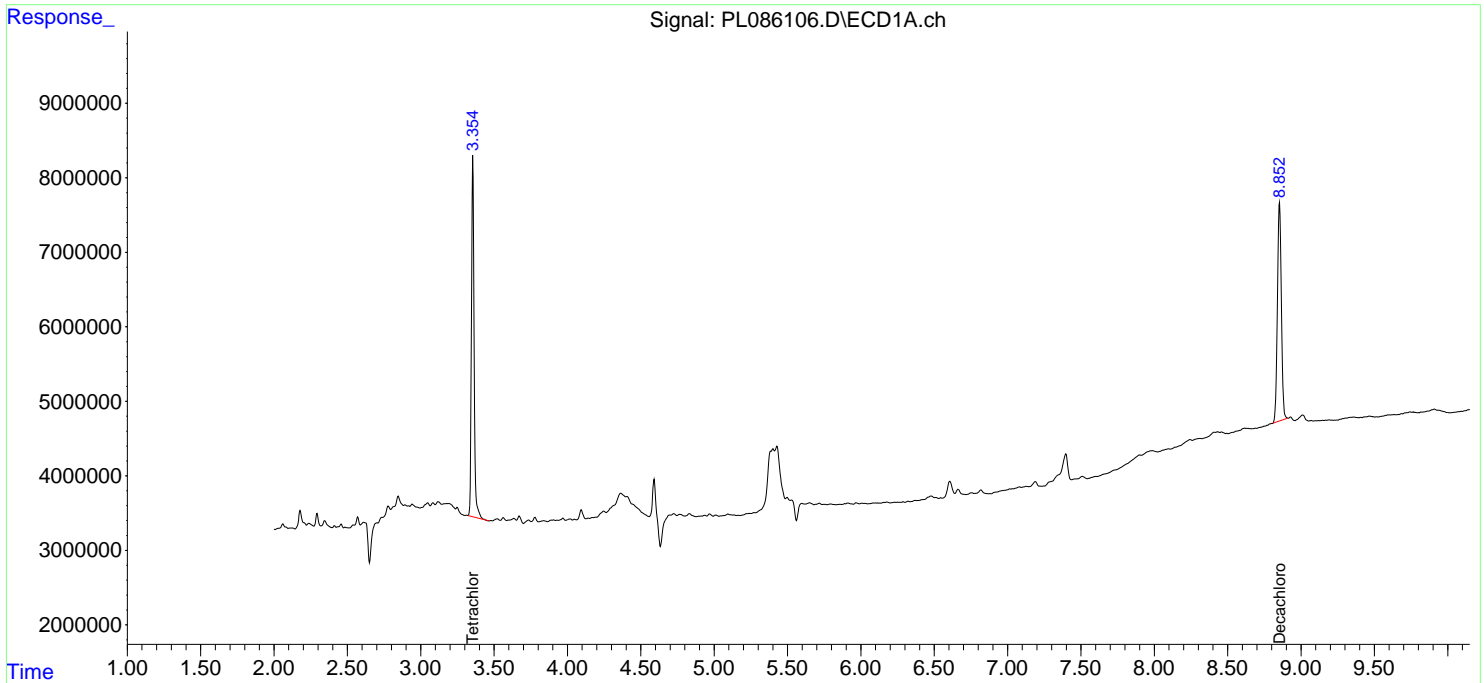
(f)=RT Delta > 1/2 Window (#)=Amounts differ by > 25% (m)=manual int.

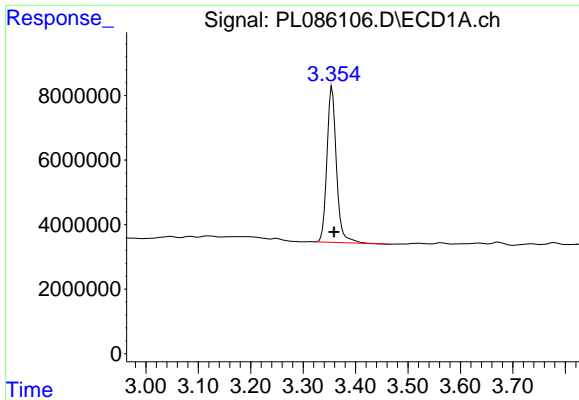
Data Path : Z:\pestpcbsrv\HPCHEM1\ECD\_L\Data\PL102423\  
 Data File : PL086106.D  
 Signal(s) : Signal #1: ECD1A.ch Signal #2: ECD2B.ch  
 Acq On : 24 Oct 2023 10:53  
 Operator : AR\AJ  
 Sample : 04978-03  
 Misc :  
 ALS Vial : 12 Sample Multiplier: 1

Instrument :  
 ECD\_L  
 ClientSampleId :  
 NB-406-COMP-03

Integration File signal 1: autoint1.e  
 Integration File signal 2: autoint2.e  
 Quant Time: Oct 24 11:34:56 2023  
 Quant Method : Z:\pestpcbsrv\HPCHEM1\ECD\_L\methods\PL100323.M  
 Quant Title : GC Extractables  
 QLast Update : Wed Oct 04 05:29:39 2023  
 Response via : Initial Calibration  
 Integrator: ChemStation

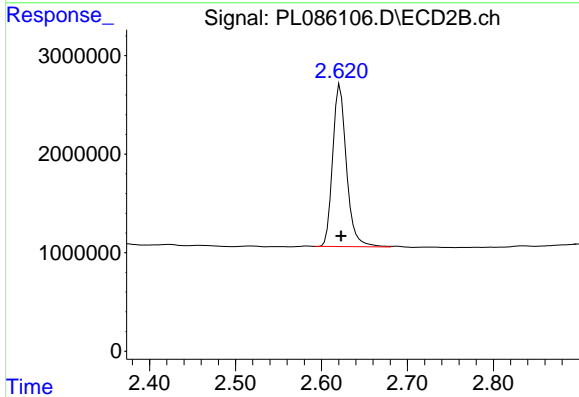
Volume Inj. : 1 µl  
 Signal #1 Phase : ZB-MR2 Signal #2 Phase: ZB-MR1  
 Signal #1 Info : 30M x 0.32mm x0.2 Signal #2 Info : 30M x 0.32mm x0.5µm



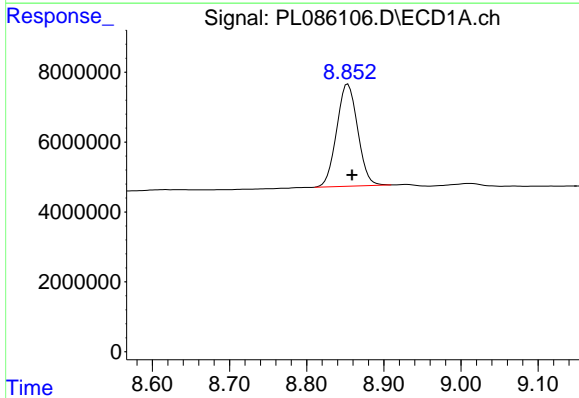


#1 Tetrachloro-m-xylene  
 R.T.: 3.355 min  
 Delta R.T.: -0.004 min  
 Response: 60461521  
 Conc: 20.33 ng/ml

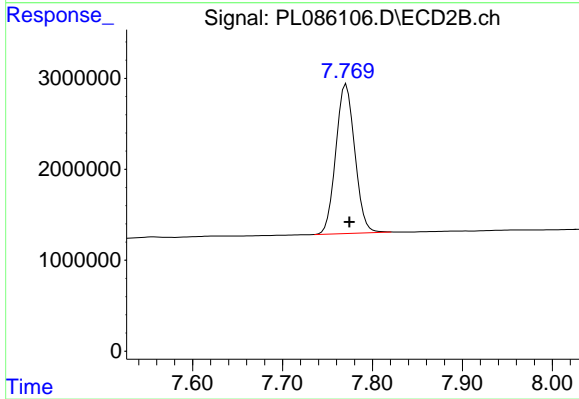
Instrument :  
 ECD\_L  
 ClientSampleId :  
 NB-406-COMP-03



#1 Tetrachloro-m-xylene  
 R.T.: 2.622 min  
 Delta R.T.: -0.001 min  
 Response: 18273671  
 Conc: 19.56 ng/ml



#28 Decachlorobiphenyl  
 R.T.: 8.854 min  
 Delta R.T.: -0.005 min  
 Response: 55408427  
 Conc: 25.44 ng/ml



#28 Decachlorobiphenyl  
 R.T.: 7.771 min  
 Delta R.T.: -0.004 min  
 Response: 24063860  
 Conc: 26.07 ng/ml