

Data Path : Z:\pestpcbsrv\HPCHEM1\ECD\_L\Data\PL102423\  
 Data File : PL086111.D  
 Signal(s) : Signal #1: ECD1A.ch Signal #2: ECD2B.ch  
 Acq On : 24 Oct 2023 12:02  
 Operator : AR\AJ  
 Sample : PB156560BS  
 Misc :  
 ALS Vial : 15 Sample Multiplier: 1

Instrument :  
 ECD\_L  
 ClientSampleId :  
 PB156560BS

Manual Integrations  
**APPROVED**

Reviewed By :Abdul Mirza 10/25/2023  
 Supervised By :Ankita Jodhani 10/25/2023

Integration File signal 1: autoint1.e  
 Integration File signal 2: autoint2.e  
 Quant Time: Oct 24 21:16:48 2023  
 Quant Method : Z:\pestpcbsrv\HPCHEM1\ECD\_L\methods\PL100323.M  
 Quant Title : GC Extractables  
 QLast Update : Wed Oct 04 05:29:39 2023  
 Response via : Initial Calibration  
 Integrator: ChemStation

Volume Inj. : 1 µl  
 Signal #1 Phase : ZB-MR2 Signal #2 Phase: ZB-MR1  
 Signal #1 Info : 30M x 0.32mm x0.2 Signal #2 Info : 30M x 0.32mm x0.5µm

	Compound	RT#1	RT#2	Resp#1	Resp#2	ng/ml	ng/ml
-----							
System Monitoring Compounds							
1)	SA Tetrachlo...	3.355	2.621	47667119	14415206	16.027	15.432
28)	SA Decachlor...	8.853	7.770	46296524	20570814	21.256	22.287
Target Compounds							
2)	A alpha-BHC	3.809	3.120	199.2E6	56829012	46.407	45.169
3)	MA gamma-BHC...	4.140	3.447	183.5E6	55476225	44.400	44.980
4)	MA Heptachlor	4.726	3.782	188.0E6	55807622	48.598	47.983
5)	MB Aldrin	5.066	4.059	181.0E6	53179279	46.695	47.555
6)	B beta-BHC	4.343	3.748	80676324	25123001	48.788	48.259
7)	B delta-BHC	4.586	3.974	186.4E6	53906961	48.610	46.918
8)	B Heptachlo...	5.496	4.564	168.6E6	51539787	48.875	51.314
9)	A Endosulfan I	5.880	4.931	160.7E6	49387209	49.676	46.038
10)	B gamma-Chl...	5.753	4.815	175.9E6	54845393	51.419	55.378
11)	B alpha-Chl...	5.833	4.879	171.0E6	54117276	50.048	49.616
12)	B 4,4'-DDE	6.016	5.078	150.0E6	47278159	53.632	57.576
13)	MA Dieldrin	6.156	5.196	156.5E6	50606217	47.631	52.159
14)	MA Endrin	6.385	5.470	137.9E6	47108350	48.389	52.401
15)	B Endosulfa...	6.607	5.768	131.5E6	44629488	47.713	46.932
16)	A 4,4'-DDD	6.534	5.634	115.8E6	40704003	57.498	58.479
17)	MA 4,4'-DDT	6.848	5.885	109.3E6	38463762	46.371m	48.642
18)	B Endrin al...	6.739	5.950	104.0E6	38148285	51.325	51.157
19)	B Endosulfa...	6.974	6.174	130.9E6	47510375	52.174	52.665
20)	A Methoxychlor	7.335	6.469	61750660	23373265	44.214	44.429
21)	B Endrin ke...	7.456	6.676	136.6E6	56082228	47.422	48.792
22)	Mirex	7.929	6.852	109.2E6	47767778	49.332	50.646

(f)=RT Delta > 1/2 Window (#)=Amounts differ by > 25% (m)=manual int.

Data Path : Z:\pestpcbsrv\HPCHEM1\ECD\_L\Data\PL102423\  
 Data File : PL086111.D  
 Signal(s) : Signal #1: ECD1A.ch Signal #2: ECD2B.ch  
 Acq On : 24 Oct 2023 12:02  
 Operator : AR\AJ  
 Sample : PB156560BS  
 Misc :  
 ALS Vial : 15 Sample Multiplier: 1

**Instrument :**

ECD\_L

**Client Sample Id :**

PB156560BS

**Manual Integrations**

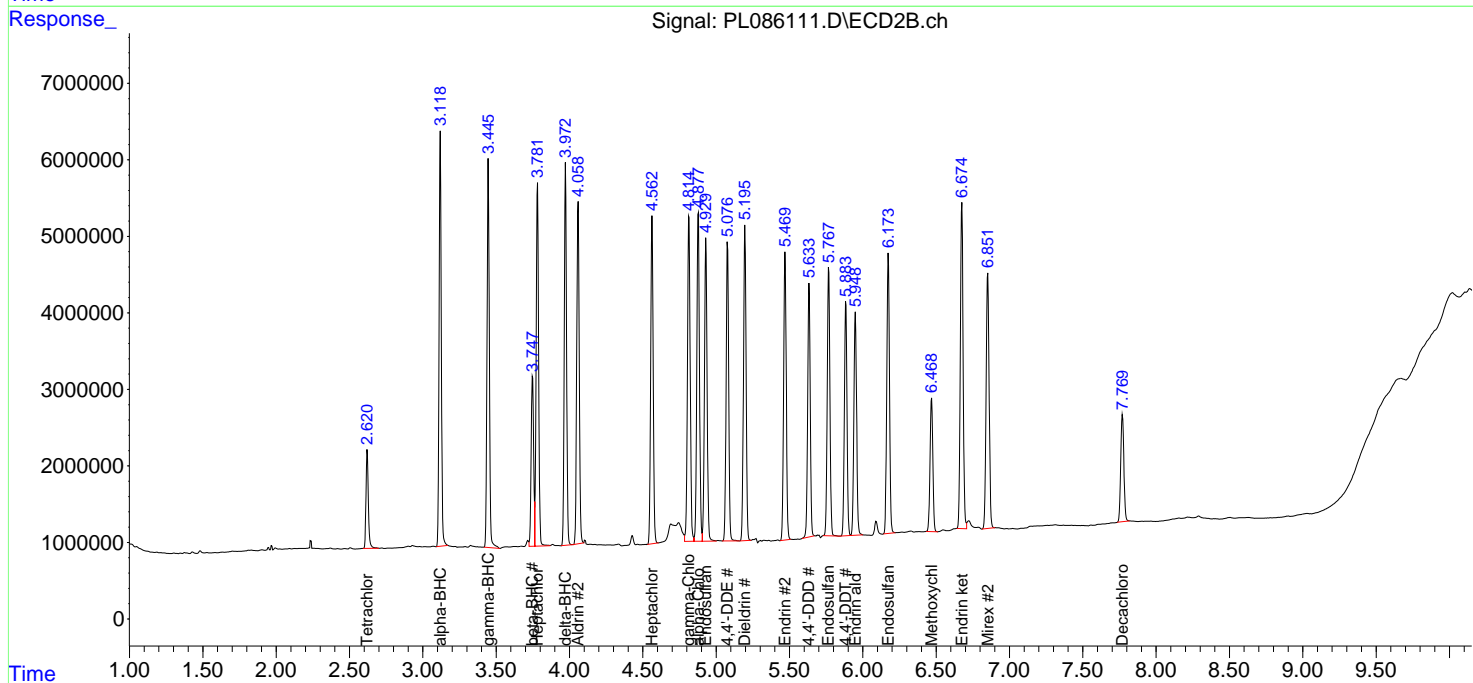
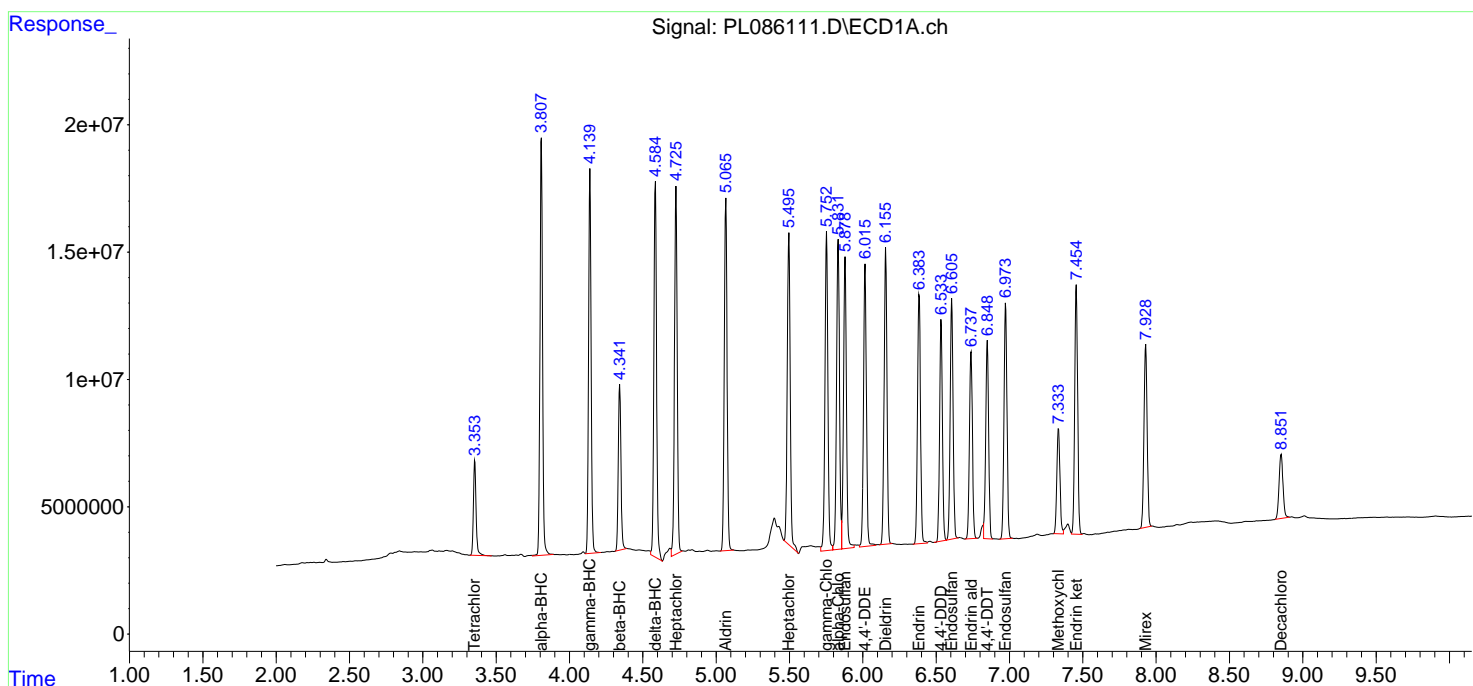
**APPROVED**

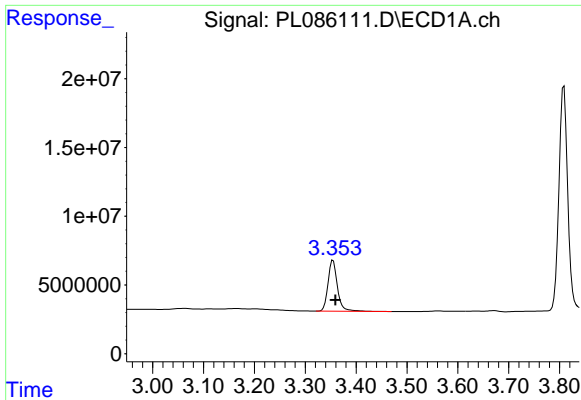
Reviewed By :Abdul Mirza 10/25/2023

Supervised By :Ankita Jodhani 10/25/2023

Integration File signal 1: autoint1.e  
 Integration File signal 2: autoint2.e  
 Quant Time: Oct 24 21:16:48 2023  
 Quant Method : Z:\pestpcbsrv\HPCHEM1\ECD\_L\methods\PL100323.M  
 Quant Title : GC Extractables  
 QLast Update : Wed Oct 04 05:29:39 2023  
 Response via : Initial Calibration  
 Integrator: ChemStation

Volume Inj. : 1 µl  
 Signal #1 Phase : ZB-MR2 Signal #2 Phase: ZB-MR1  
 Signal #1 Info : 30M x 0.32mm x0.2 Signal #2 Info : 30M x 0.32mm x0.5µm





#1 Tetrachloro-m-xylene

R.T.: 3.355 min  
 Delta R.T.: -0.004 min  
 Response: 47667119  
 Conc: 16.03 ng/ml

Instrument :

ECD\_L

ClientSampleId :

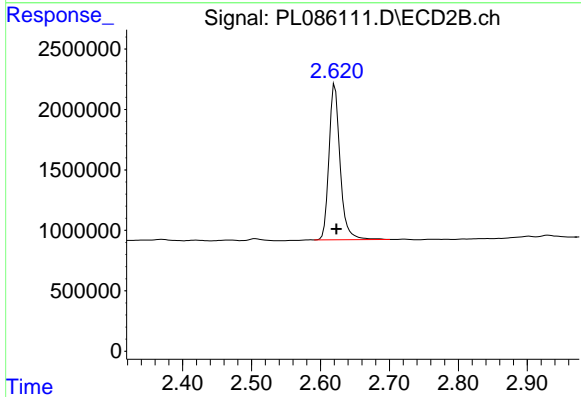
PB156560BS

Manual Integrations

APPROVED

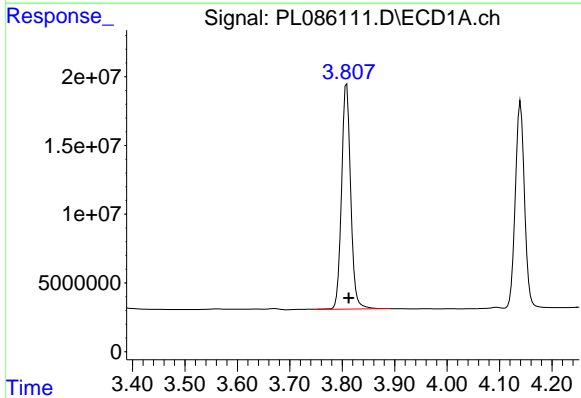
Reviewed By :Abdul Mirza 10/25/2023

Supervised By :Ankita Jodhani 10/25/2023



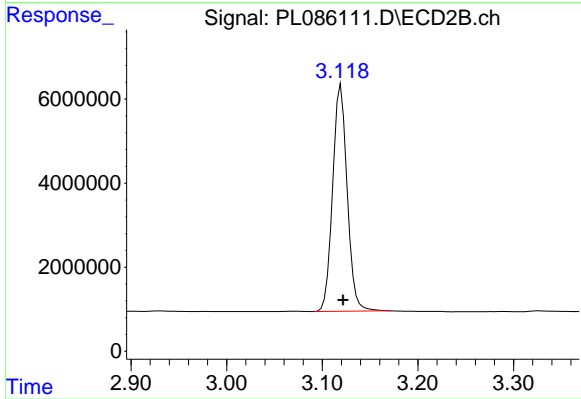
#1 Tetrachloro-m-xylene

R.T.: 2.621 min  
 Delta R.T.: -0.002 min  
 Response: 14415206  
 Conc: 15.43 ng/ml



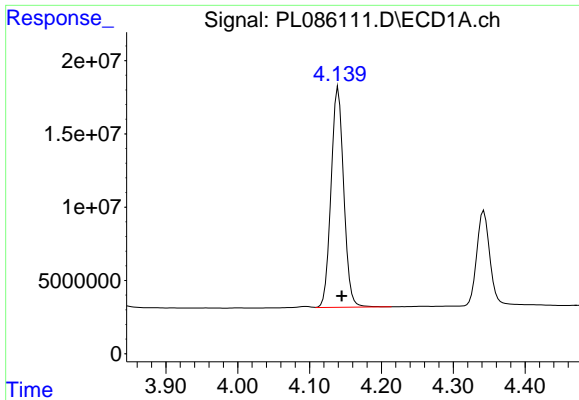
#2 alpha-BHC

R.T.: 3.809 min  
 Delta R.T.: -0.004 min  
 Response: 199174112  
 Conc: 46.41 ng/ml



#2 alpha-BHC

R.T.: 3.120 min  
 Delta R.T.: -0.002 min  
 Response: 56829012  
 Conc: 45.17 ng/ml

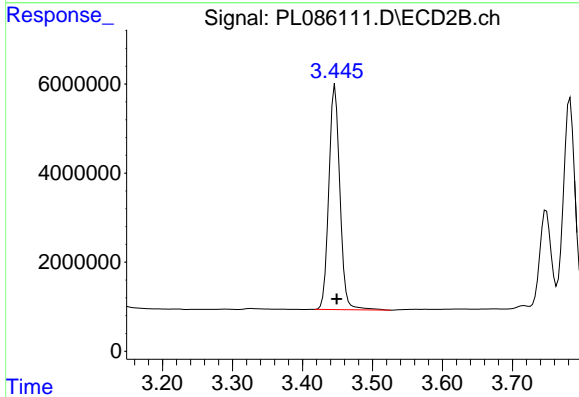


#3 gamma-BHC (Lindane)  
 R.T.: 4.140 min  
 Delta R.T.: -0.005 min  
 Response: 183517507  
 Conc: 44.40 ng/ml

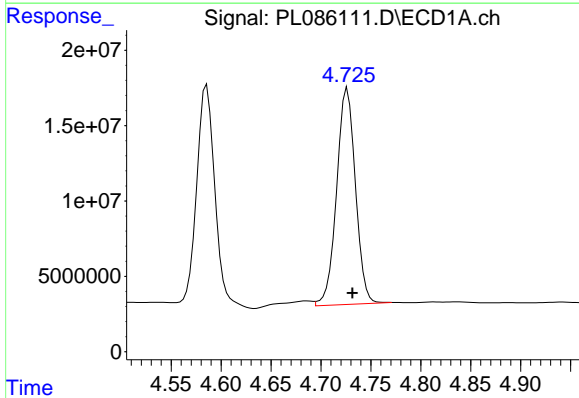
Instrument :  
 ECD\_L  
 ClientSampleId :  
 PB156560BS

Manual Integrations  
 APPROVED

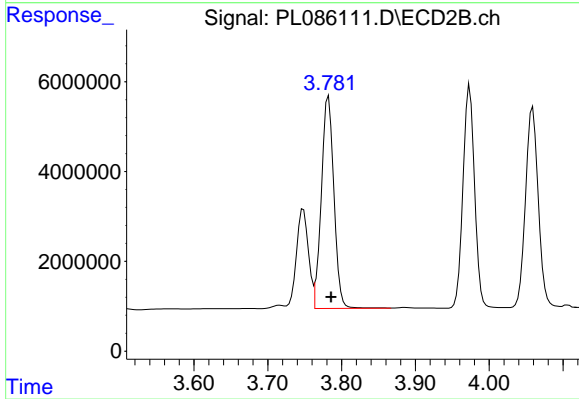
Reviewed By :Abdul Mirza 10/25/2023  
 Supervised By :Ankita Jodhani 10/25/2023



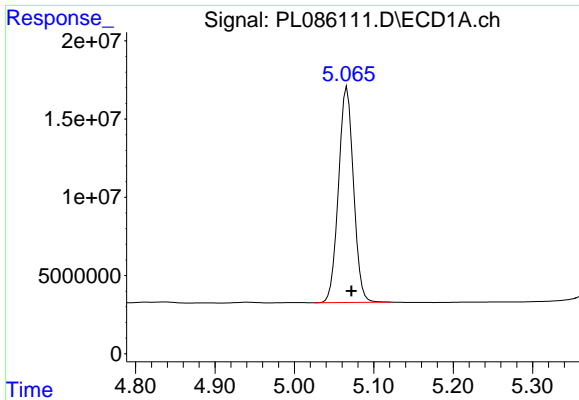
#3 gamma-BHC (Lindane)  
 R.T.: 3.447 min  
 Delta R.T.: -0.002 min  
 Response: 55476225  
 Conc: 44.98 ng/ml



#4 Heptachlor  
 R.T.: 4.726 min  
 Delta R.T.: -0.005 min  
 Response: 187959829  
 Conc: 48.60 ng/ml



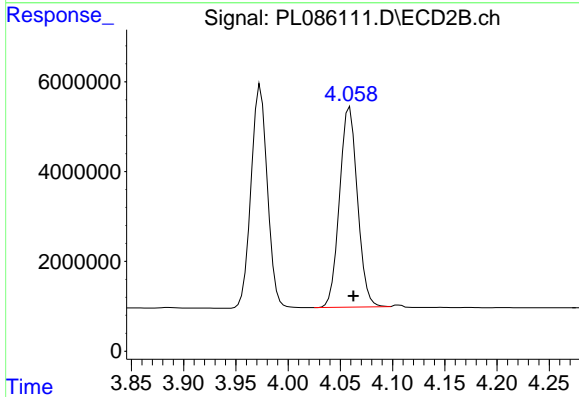
#4 Heptachlor  
 R.T.: 3.782 min  
 Delta R.T.: -0.003 min  
 Response: 55807622  
 Conc: 47.98 ng/ml



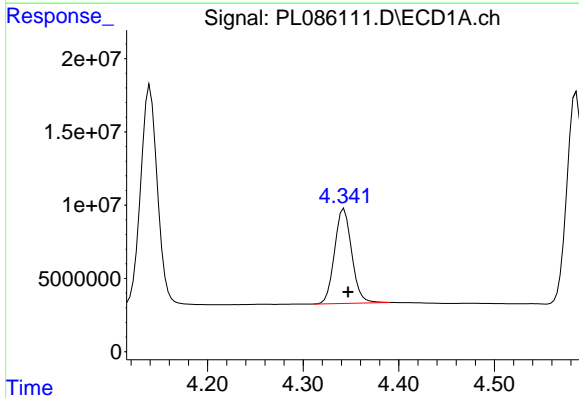
#5 Aldrin  
 R.T.: 5.066 min  
 Delta R.T.: -0.006 min  
 Response: 181004218  
 Conc: 46.69 ng/ml

Instrument :  
 ECD\_L  
 ClientSampleId :  
 PB156560BS

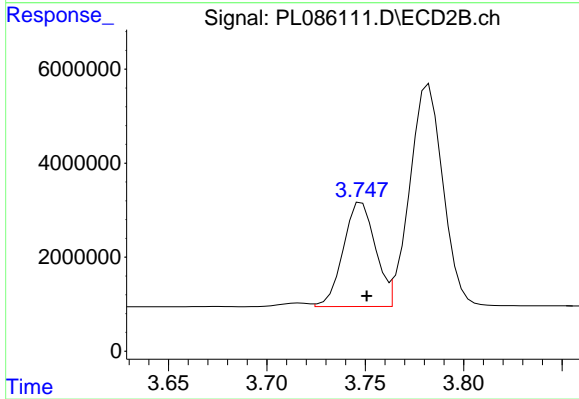
**Manual Integrations**  
**APPROVED**  
 Reviewed By :Abdul Mirza 10/25/2023  
 Supervised By :Ankita Jodhani 10/25/2023



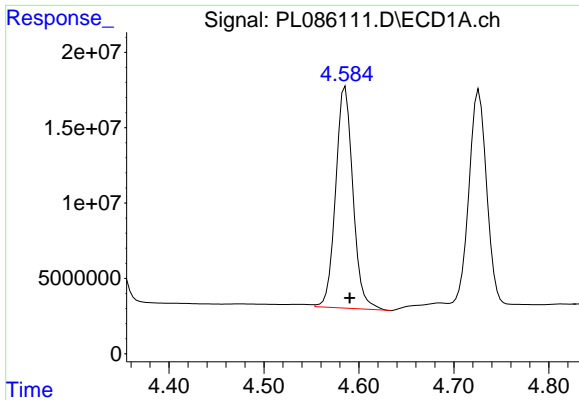
#5 Aldrin  
 R.T.: 4.059 min  
 Delta R.T.: -0.003 min  
 Response: 53179279  
 Conc: 47.56 ng/ml



#6 beta-BHC  
 R.T.: 4.343 min  
 Delta R.T.: -0.004 min  
 Response: 80676324  
 Conc: 48.79 ng/ml



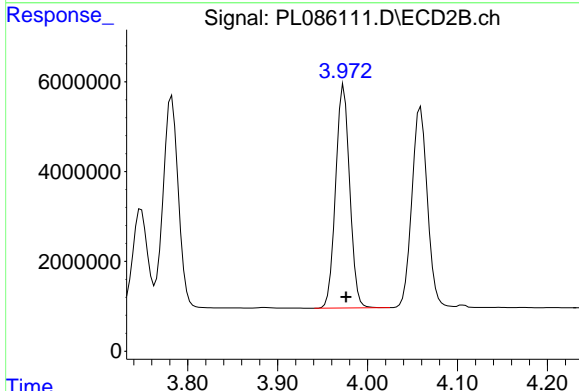
#6 beta-BHC  
 R.T.: 3.748 min  
 Delta R.T.: -0.002 min  
 Response: 25123001  
 Conc: 48.26 ng/ml



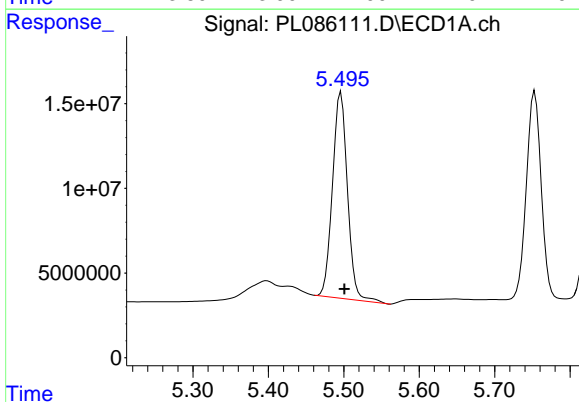
#7 delta-BHC  
 R.T.: 4.586 min  
 Delta R.T.: -0.005 min  
 Response: 186391744  
 Conc: 48.61 ng/ml

Instrument : ECD\_L  
 ClientSampleId : PB156560BS

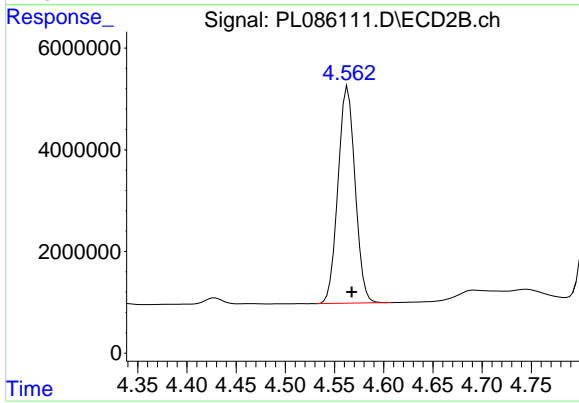
**Manual Integrations**  
**APPROVED**  
 Reviewed By :Abdul Mirza 10/25/2023  
 Supervised By :Ankita Jodhani 10/25/2023



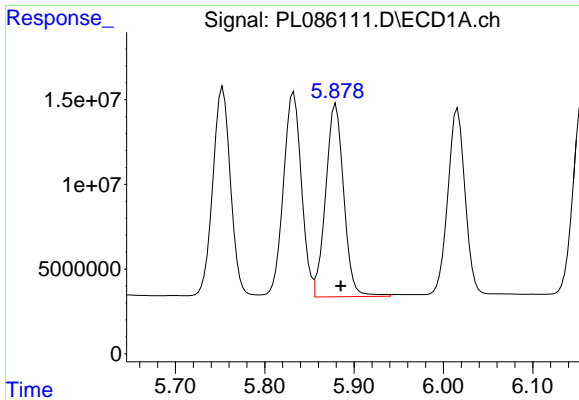
#7 delta-BHC  
 R.T.: 3.974 min  
 Delta R.T.: -0.002 min  
 Response: 53906961  
 Conc: 46.92 ng/ml



#8 Heptachlor epoxide  
 R.T.: 5.496 min  
 Delta R.T.: -0.005 min  
 Response: 168608620  
 Conc: 48.87 ng/ml



#8 Heptachlor epoxide  
 R.T.: 4.564 min  
 Delta R.T.: -0.004 min  
 Response: 51539787  
 Conc: 51.31 ng/ml



#9 Endosulfan I

R.T.: 5.880 min  
 Delta R.T.: -0.005 min  
 Response: 160654335  
 Conc: 49.68 ng/ml

Instrument :

ECD\_L

ClientSampleId :

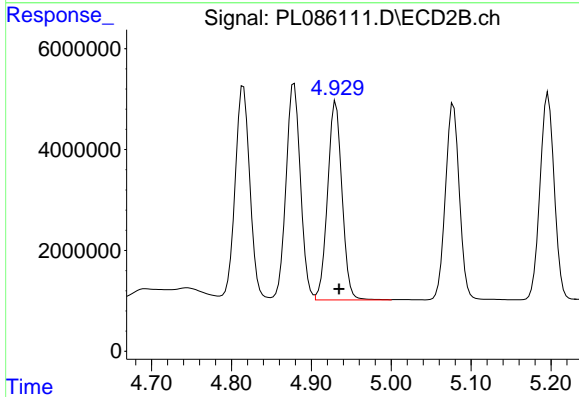
PB156560BS

Manual Integrations

APPROVED

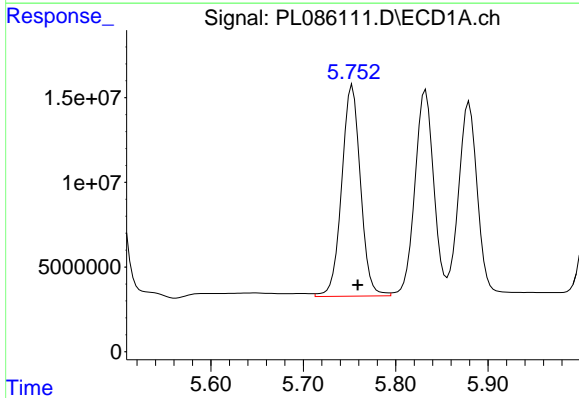
Reviewed By :Abdul Mirza 10/25/2023

Supervised By :Ankita Jodhani 10/25/2023



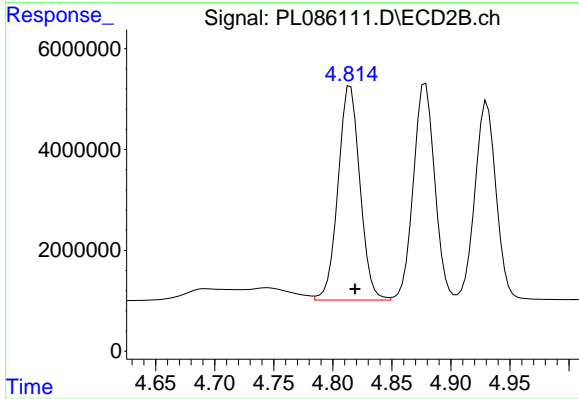
#9 Endosulfan I

R.T.: 4.931 min  
 Delta R.T.: -0.004 min  
 Response: 49387209  
 Conc: 46.04 ng/ml



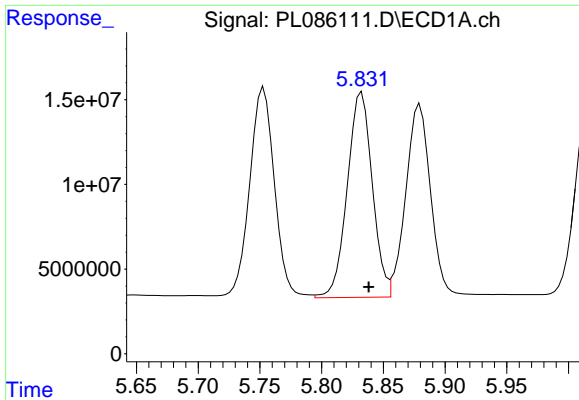
#10 gamma-Chlordane

R.T.: 5.753 min  
 Delta R.T.: -0.006 min  
 Response: 175927462  
 Conc: 51.42 ng/ml



#10 gamma-Chlordane

R.T.: 4.815 min  
 Delta R.T.: -0.004 min  
 Response: 54845393  
 Conc: 55.38 ng/ml



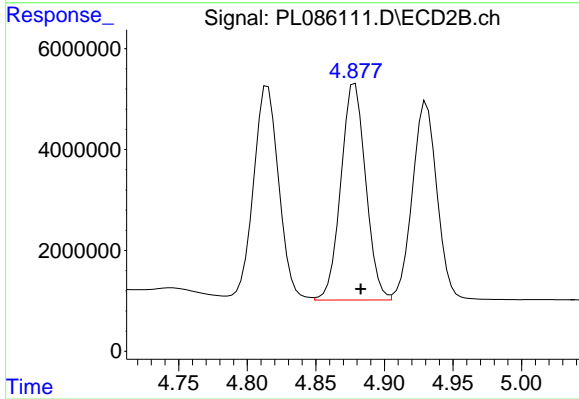
#11 alpha-Chlordane

R.T.: 5.833 min  
 Delta R.T.: -0.006 min  
 Response: 171047542  
 Conc: 50.05 ng/ml

Instrument :  
 ECD\_L  
 ClientSampleId :  
 PB156560BS

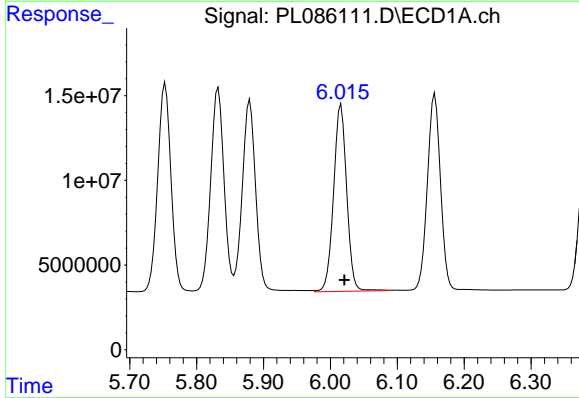
Manual Integrations  
 APPROVED

Reviewed By :Abdul Mirza 10/25/2023  
 Supervised By :Ankita Jodhani 10/25/2023



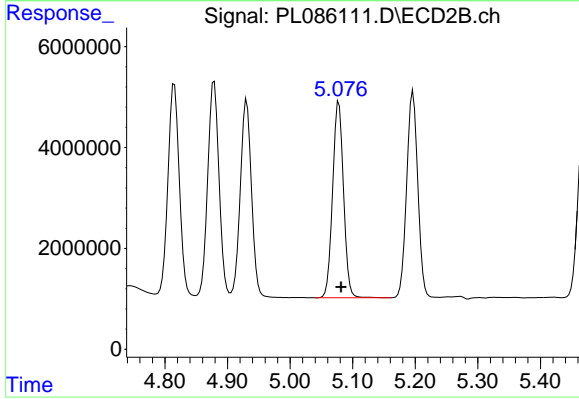
#11 alpha-Chlordane

R.T.: 4.879 min  
 Delta R.T.: -0.004 min  
 Response: 54117276  
 Conc: 49.62 ng/ml



#12 4,4'-DDE

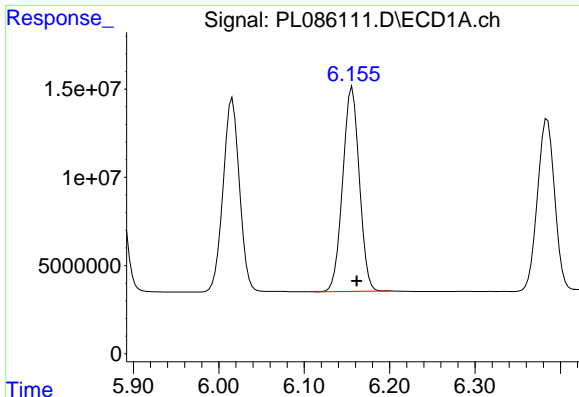
R.T.: 6.016 min  
 Delta R.T.: -0.005 min  
 Response: 149983326  
 Conc: 53.63 ng/ml



#12 4,4'-DDE

R.T.: 5.078 min  
 Delta R.T.: -0.004 min  
 Response: 47278159  
 Conc: 57.58 ng/ml





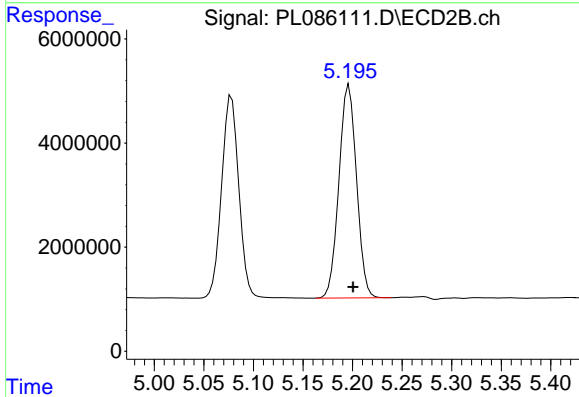
#13 Dieldrin

R.T.: 6.156 min  
 Delta R.T.: -0.005 min  
 Response: 156513354  
 Conc: 47.63 ng/ml

Instrument :  
 ECD\_L  
 ClientSampleId :  
 PB156560BS

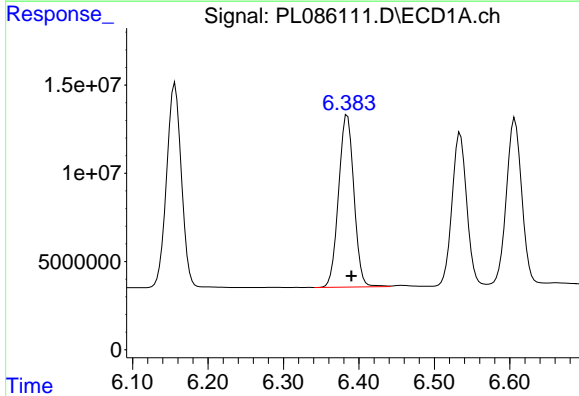
Manual Integrations  
 APPROVED

Reviewed By :Abdul Mirza 10/25/2023  
 Supervised By :Ankita Jodhani 10/25/2023



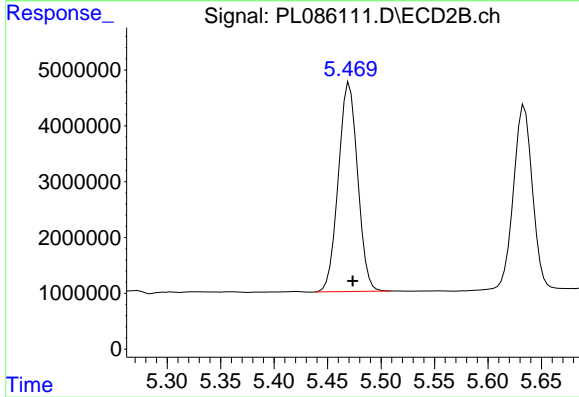
#13 Dieldrin

R.T.: 5.196 min  
 Delta R.T.: -0.004 min  
 Response: 50606217  
 Conc: 52.16 ng/ml



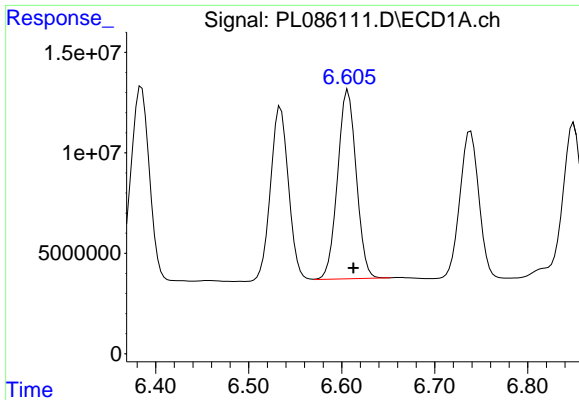
#14 Endrin

R.T.: 6.385 min  
 Delta R.T.: -0.005 min  
 Response: 137896273  
 Conc: 48.39 ng/ml



#14 Endrin

R.T.: 5.470 min  
 Delta R.T.: -0.003 min  
 Response: 47108350  
 Conc: 52.40 ng/ml



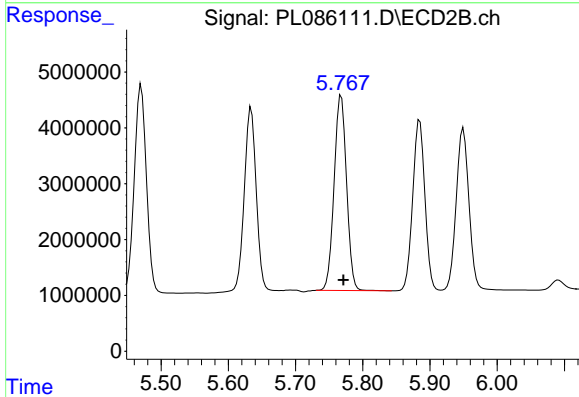
#15 Endosulfan II

R.T.: 6.607 min  
 Delta R.T.: -0.006 min  
 Response: 131473476  
 Conc: 47.71 ng/ml

Instrument :  
 ECD\_L  
 ClientSampleId :  
 PB156560BS

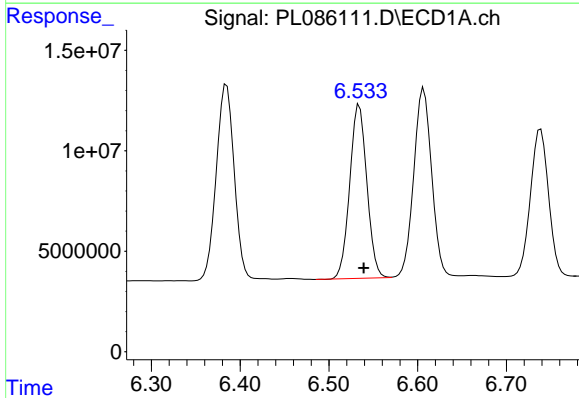
Manual Integrations  
 APPROVED

Reviewed By :Abdul Mirza 10/25/2023  
 Supervised By :Ankita Jodhani 10/25/2023



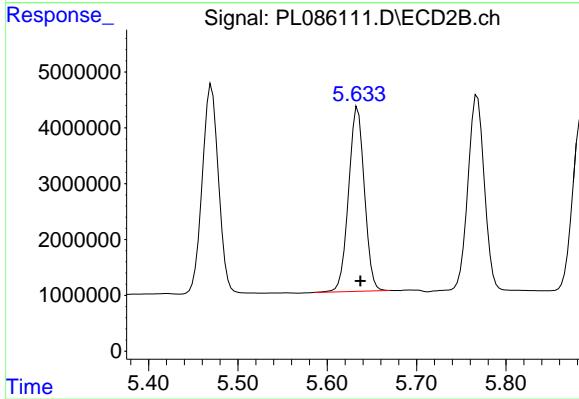
#15 Endosulfan II

R.T.: 5.768 min  
 Delta R.T.: -0.003 min  
 Response: 44629488  
 Conc: 46.93 ng/ml



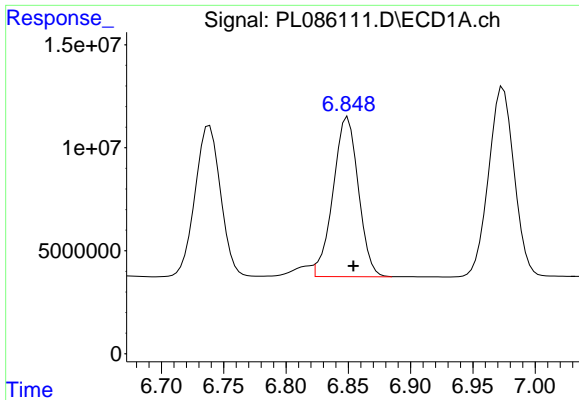
#16 4,4'-DDD

R.T.: 6.534 min  
 Delta R.T.: -0.005 min  
 Response: 115838537  
 Conc: 57.50 ng/ml



#16 4,4'-DDD

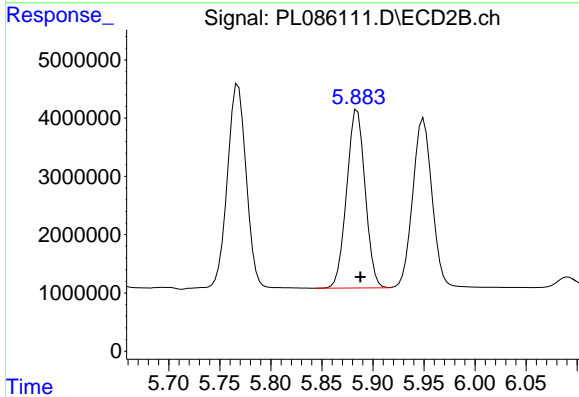
R.T.: 5.634 min  
 Delta R.T.: -0.003 min  
 Response: 40704003  
 Conc: 58.48 ng/ml



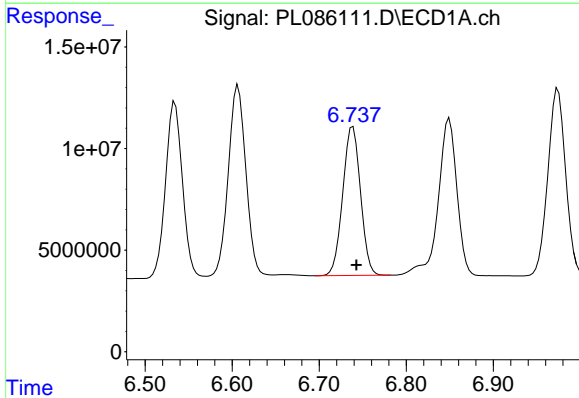
#17 4,4'-DDT  
 R.T.: 6.848 min  
 Delta R.T.: -0.006 min  
 Response: 109300481  
 Conc: 46.37 ng/ml

Instrument : ECD\_L  
 Client Sample Id : PB156560BS

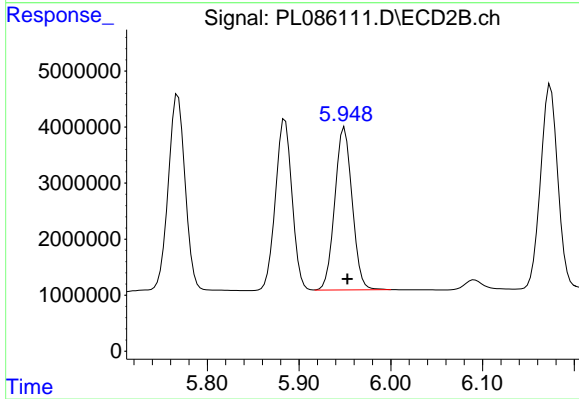
**Manual Integrations**  
**APPROVED**  
 Reviewed By :Abdul Mirza 10/25/2023  
 Supervised By :Ankita Jodhani 10/25/2023



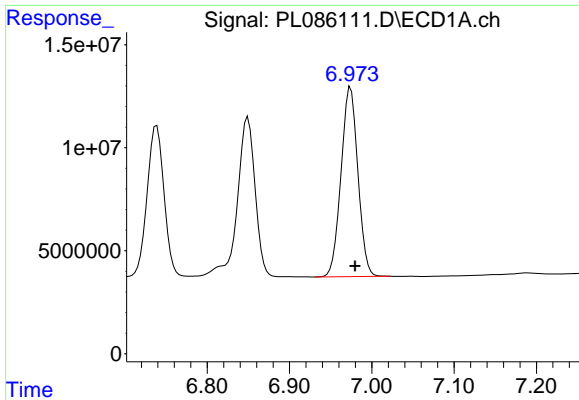
#17 4,4'-DDT  
 R.T.: 5.885 min  
 Delta R.T.: -0.003 min  
 Response: 38463762  
 Conc: 48.64 ng/ml



#18 Endrin aldehyde  
 R.T.: 6.739 min  
 Delta R.T.: -0.004 min  
 Response: 104024286  
 Conc: 51.33 ng/ml



#18 Endrin aldehyde  
 R.T.: 5.950 min  
 Delta R.T.: -0.003 min  
 Response: 38148285  
 Conc: 51.16 ng/ml

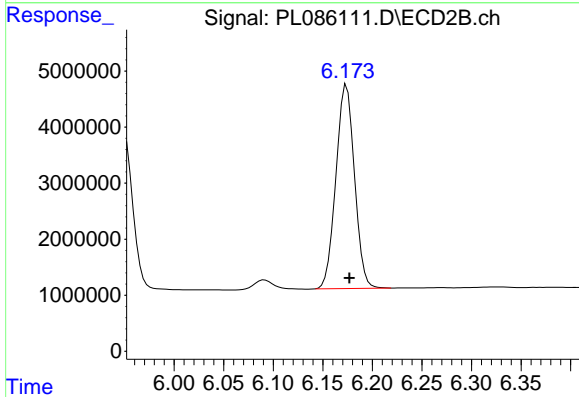


#19 Endosulfan Sulfate  
 R.T.: 6.974 min  
 Delta R.T.: -0.005 min  
 Response: 130942775  
 Conc: 52.17 ng/ml

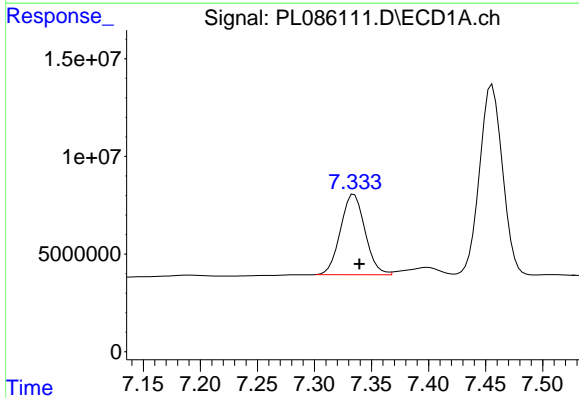
Instrument :  
 ECD\_L  
 ClientSampleId :  
 PB156560BS

Manual Integrations  
 APPROVED

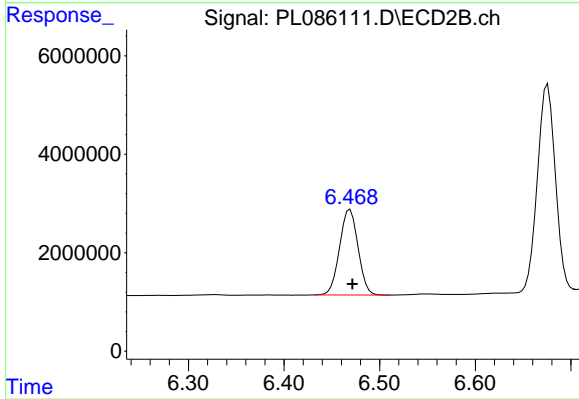
Reviewed By :Abdul Mirza 10/25/2023  
 Supervised By :Ankita Jodhani 10/25/2023



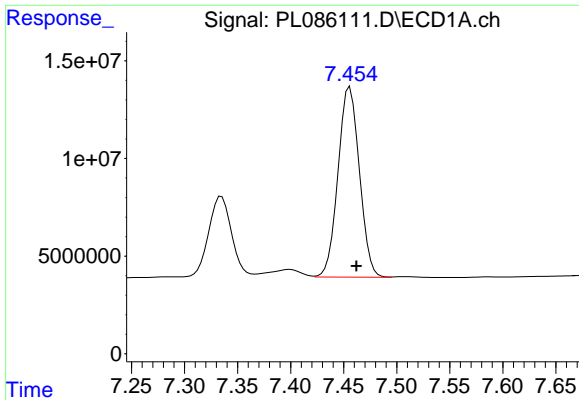
#19 Endosulfan Sulfate  
 R.T.: 6.174 min  
 Delta R.T.: -0.003 min  
 Response: 47510375  
 Conc: 52.67 ng/ml



#20 Methoxychlor  
 R.T.: 7.335 min  
 Delta R.T.: -0.004 min  
 Response: 61750660  
 Conc: 44.21 ng/ml



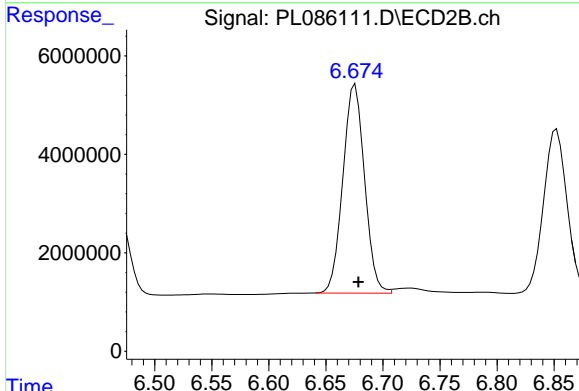
#20 Methoxychlor  
 R.T.: 6.469 min  
 Delta R.T.: -0.003 min  
 Response: 23373265  
 Conc: 44.43 ng/ml



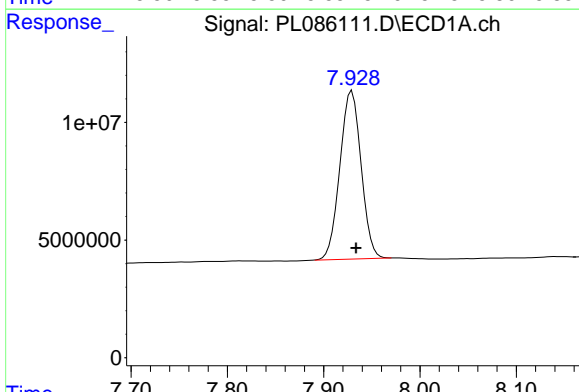
#21 Endrin ketone  
 R.T.: 7.456 min  
 Delta R.T.: -0.006 min  
 Response: 136589515  
 Conc: 47.42 ng/ml

Instrument : ECD\_L  
 ClientSampleId : PB156560BS

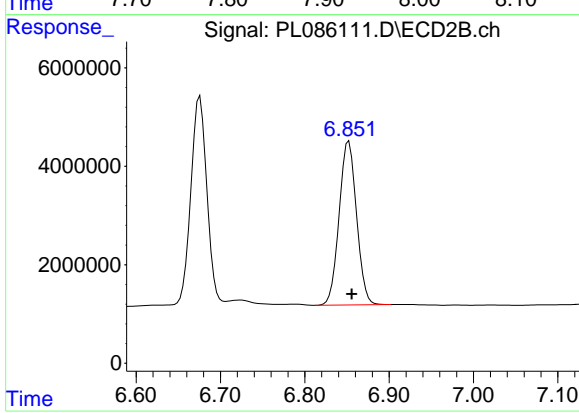
**Manual Integrations**  
**APPROVED**  
 Reviewed By :Abdul Mirza 10/25/2023  
 Supervised By :Ankita Jodhani 10/25/2023



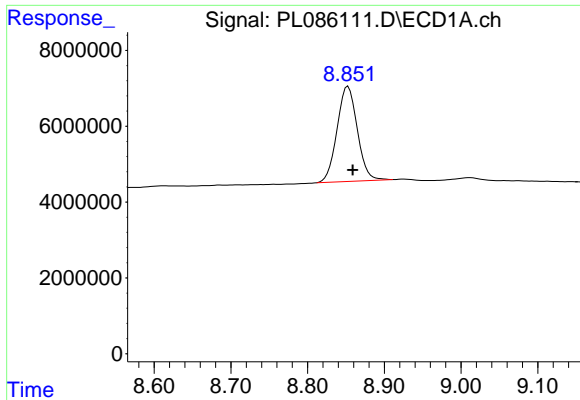
#21 Endrin ketone  
 R.T.: 6.676 min  
 Delta R.T.: -0.003 min  
 Response: 56082228  
 Conc: 48.79 ng/ml



#22 Mirex  
 R.T.: 7.929 min  
 Delta R.T.: -0.004 min  
 Response: 109221098  
 Conc: 49.33 ng/ml



#22 Mirex  
 R.T.: 6.852 min  
 Delta R.T.: -0.004 min  
 Response: 47767778  
 Conc: 50.65 ng/ml



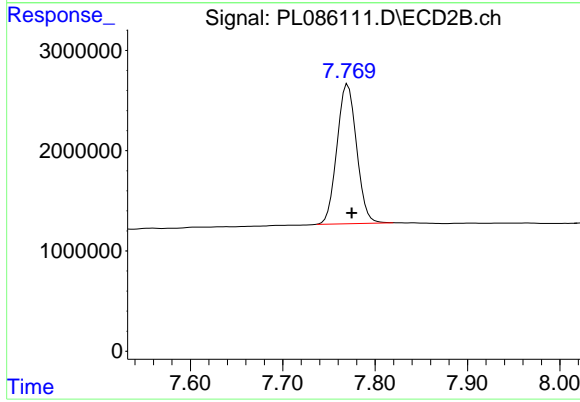
#28 Decachlorobiphenyl

R.T.: 8.853 min  
Delta R.T.: -0.006 min  
Response: 46296524  
Conc: 21.26 ng/ml

Instrument :  
ECD\_L  
ClientSampleId :  
PB156560BS

Manual Integrations  
APPROVED

Reviewed By :Abdul Mirza 10/25/2023  
Supervised By :Ankita Jodhani 10/25/2023



#28 Decachlorobiphenyl

R.T.: 7.770 min  
Delta R.T.: -0.004 min  
Response: 20570814  
Conc: 22.29 ng/ml