

Data Path : Z:\pestpcbsrv\HPCHEM1\ECD_L\Data\PL102423\
 Data File : PL086143.D
 Signal(s) : Signal #1: ECD1A.ch Signal #2: ECD2B.ch
 Acq On : 24 Oct 2023 22:24
 Operator : AR\AJ
 Sample : PSTDCCC050
 Misc :
 ALS Vial : 4 Sample Multiplier: 1

Instrument :

ECD_L

ClientSampleId :

PSTDCCC050

Manual Integrations

APPROVED

Reviewed By :Abdul Mirza 10/25/2023
 Supervised By :Ankita Jodhani 10/25/2023

Integration File signal 1: autoint1.e
 Integration File signal 2: autoint2.e
 Quant Time: Oct 25 01:08:17 2023
 Quant Method : Z:\pestpcbsrv\HPCHEM1\ECD_L\methods\PL100323.M
 Quant Title : GC Extractables
 QLast Update : Wed Oct 04 05:29:39 2023
 Response via : Initial Calibration
 Integrator: ChemStation

Volume Inj. : 1 µl
 Signal #1 Phase : ZB-MR2 Signal #2 Phase: ZB-MR1
 Signal #1 Info : 30M x 0.32mm x0.2 Signal #2 Info : 30M x 0.32mm x0.5µm

	Compound	RT#1	RT#2	Resp#1	Resp#2	ng/ml	ng/ml

System Monitoring Compounds							
1)	SA Tetrachlo...	3.355	2.621	144.3E6	45788902	48.504	49.019
28)	SA Decachlor...	8.854	7.772	124.0E6	49355168	56.944	53.473
Target Compounds							
2)	A alpha-BHC	3.809	3.120	213.7E6	63227242	49.801	50.255
3)	MA gamma-BHC...	4.140	3.447	208.4E6	62897239	50.428	50.997
4)	MA Heptachlor	4.726	3.783	192.6E6	59104962	49.787m	50.818
5)	MB Aldrin	5.067	4.059	195.4E6	59525135	50.398	53.230
6)	B beta-BHC	4.343	3.749	87225564	27717739	52.748	53.243
7)	B delta-BHC	4.586	3.974	202.5E6	62417603	52.805	54.325
8)	B Heptachlo...	5.497	4.564	170.0E6	55282129	49.267	55.040
9)	A Endosulfan I	5.880	4.931	161.6E6	52059470	49.974	48.529
10)	B gamma-Chl...	5.754	4.815	172.4E6	55517964	50.399	56.057m
11)	B alpha-Chl...	5.833	4.880	172.7E6	57311188	50.537	52.544
12)	B 4,4'-DDE	6.017	5.077	147.2E6	48879264	52.636	59.526m
13)	MA Dieldrin	6.157	5.197	158.8E6	53656517	48.336	55.303
14)	MA Endrin	6.386	5.471	139.3E6	49334378	48.897	54.877
15)	B Endosulfa...	6.608	5.769	140.2E6	48246139	50.869	50.735
16)	A 4,4'-DDD	6.536	5.635	115.3E6	41074373	57.243	59.011
17)	MA 4,4'-DDT	6.851	5.885	109.8E6	40195701	46.580	50.832
18)	B Endrin al...	6.739	5.950	100.2E6	37980323	49.421	50.932
19)	B Endosulfa...	6.975	6.174	129.4E6	46959541	51.550	52.055
20)	A Methoxychlor	7.336	6.469	63429636	25417748	45.417	48.316
21)	B Endrin ke...	7.457	6.676	139.2E6	56202431	48.334	48.897
22)	Mirex	7.930	6.853	110.0E6	46228324	49.685	49.014

(f)=RT Delta > 1/2 Window (#)=Amounts differ by > 25% (m)=manual int.

Data Path : Z:\pestpcbsrv\HPCHEM1\ECD_L\Data\PL102423\
 Data File : PL086143.D
 Signal(s) : Signal #1: ECD1A.ch Signal #2: ECD2B.ch
 Acq On : 24 Oct 2023 22:24
 Operator : AR\AJ
 Sample : PSTDCCC050
 Misc :
 ALS Vial : 4 Sample Multiplier: 1

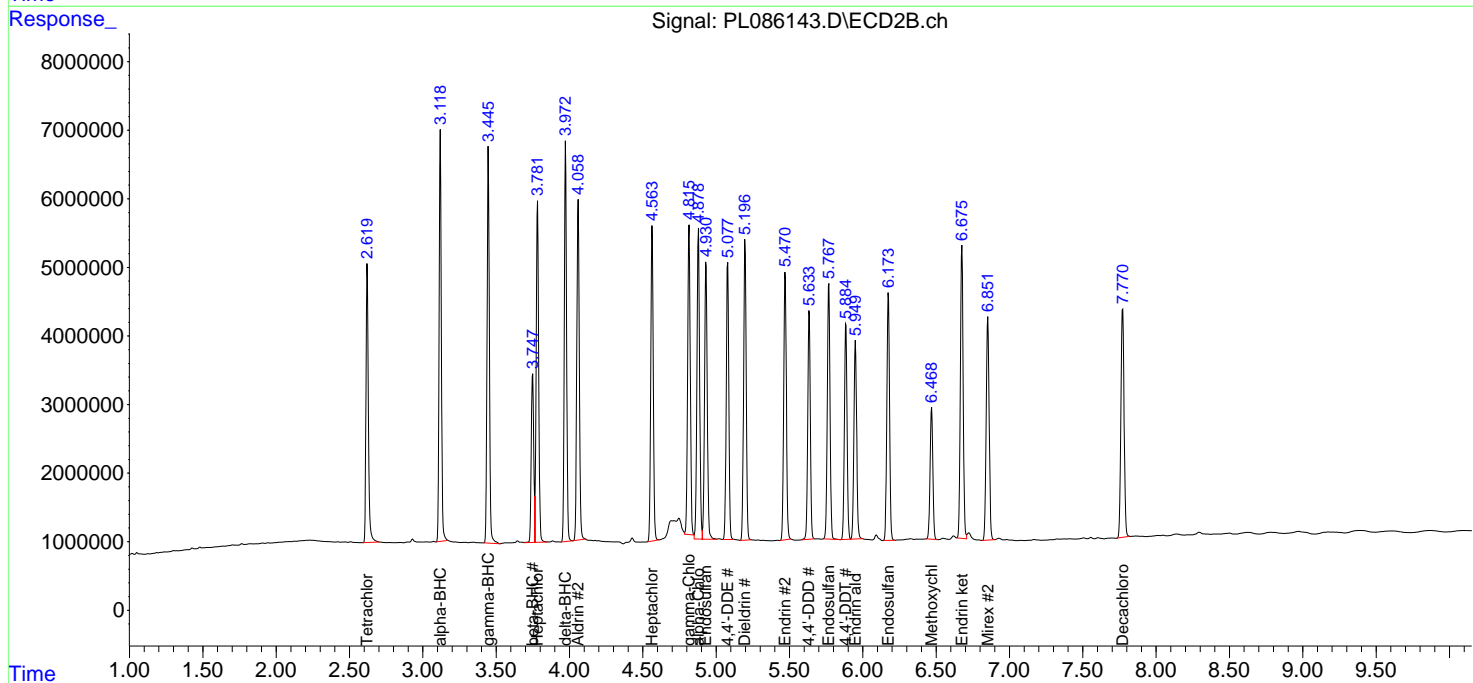
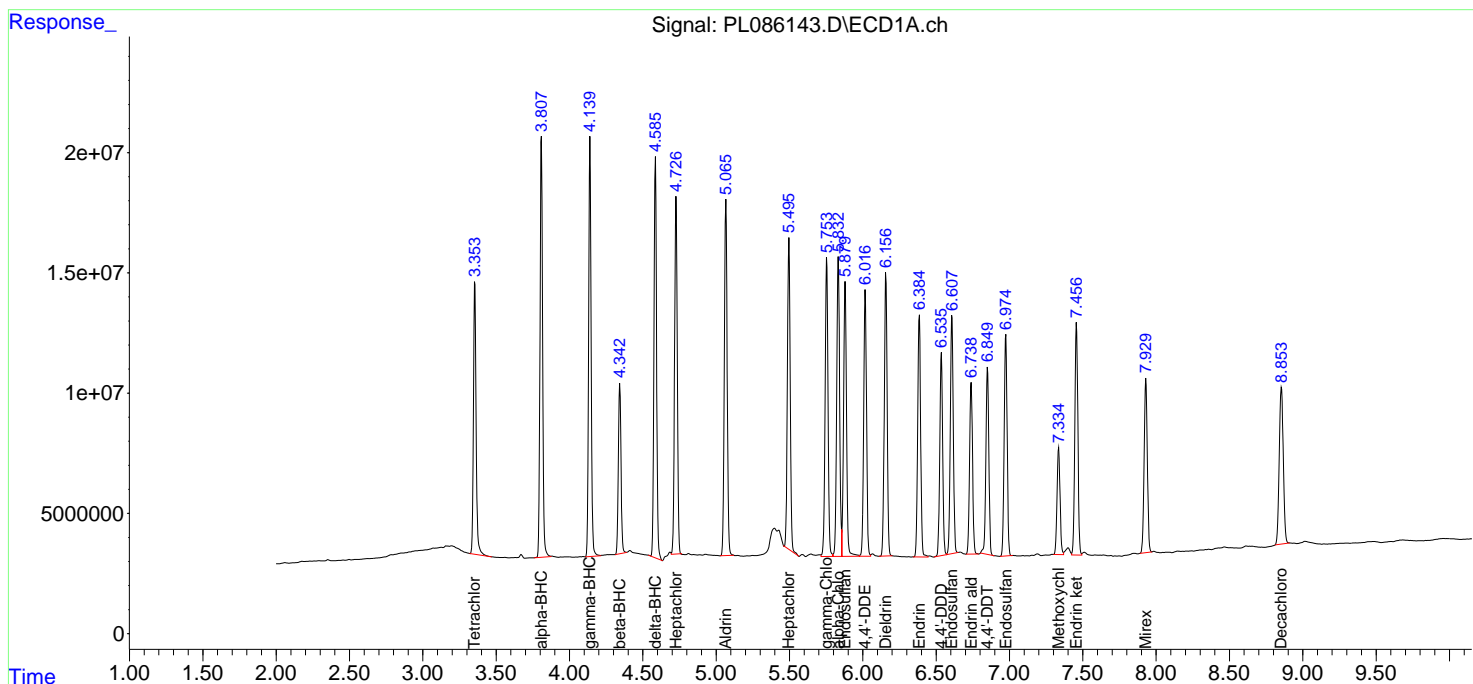
Instrument :
 ECD_L
ClientSampleId :
 PSTDCCC050

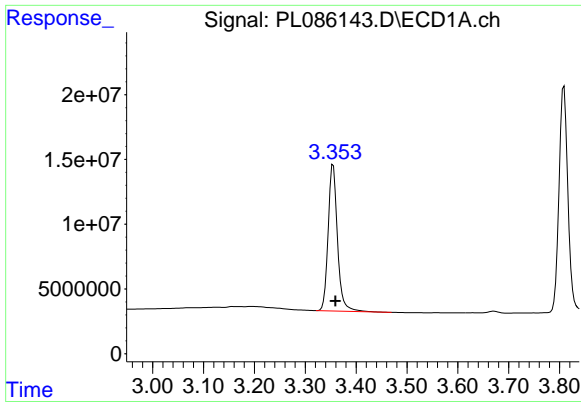
Manual Integrations
APPROVED

Reviewed By :Abdul Mirza 10/25/2023
 Supervised By :Ankita Jodhani 10/25/2023

Integration File signal 1: autoint1.e
 Integration File signal 2: autoint2.e
 Quant Time: Oct 25 01:08:17 2023
 Quant Method : Z:\pestpcbsrv\HPCHEM1\ECD_L\methods\PL100323.M
 Quant Title : GC Extractables
 QLast Update : Wed Oct 04 05:29:39 2023
 Response via : Initial Calibration
 Integrator: ChemStation

Volume Inj. : 1 µl
 Signal #1 Phase : ZB-MR2 Signal #2 Phase: ZB-MR1
 Signal #1 Info : 30M x 0.32mm x0.2 Signal #2 Info : 30M x 0.32mm x0.5µm





#1 Tetrachloro-m-xylene

R.T.: 3.355 min
 Delta R.T.: -0.004 min
 Response: 144258125
 Conc: 48.50 ng/ml

Instrument :

ECD_L

ClientSampleId :

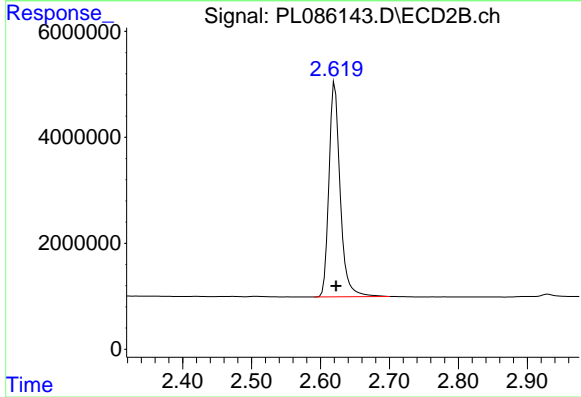
PSTDCCC050

Manual Integrations

APPROVED

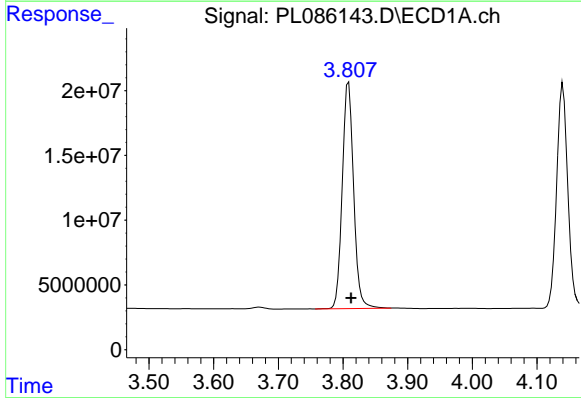
Reviewed By :Abdul Mirza 10/25/2023

Supervised By :Ankita Jodhani 10/25/2023



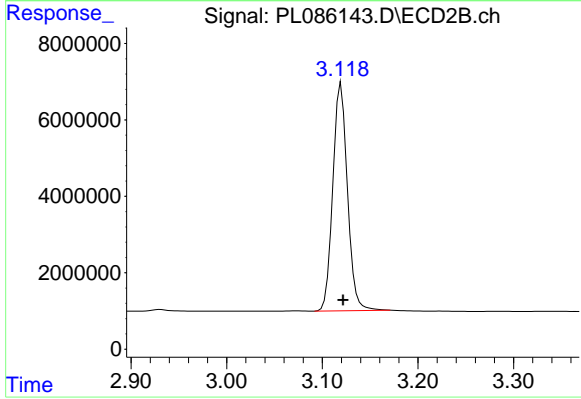
#1 Tetrachloro-m-xylene

R.T.: 2.621 min
 Delta R.T.: -0.002 min
 Response: 45788902
 Conc: 49.02 ng/ml



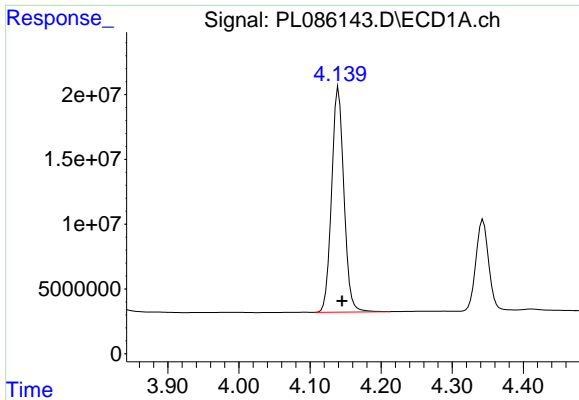
#2 alpha-BHC

R.T.: 3.809 min
 Delta R.T.: -0.004 min
 Response: 213740874
 Conc: 49.80 ng/ml



#2 alpha-BHC

R.T.: 3.120 min
 Delta R.T.: -0.002 min
 Response: 63227242
 Conc: 50.25 ng/ml

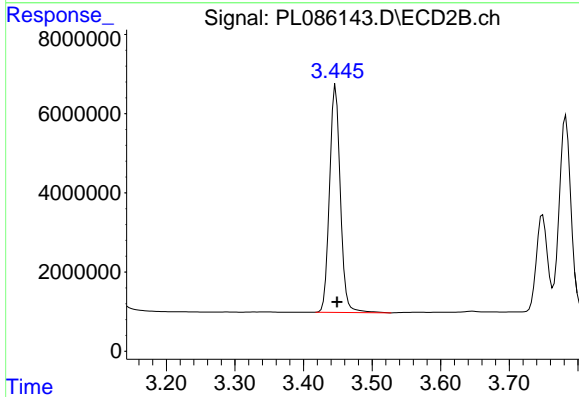


#3 gamma-BHC (Lindane)
 R.T.: 4.140 min
 Delta R.T.: -0.005 min
 Response: 208437014
 Conc: 50.43 ng/ml

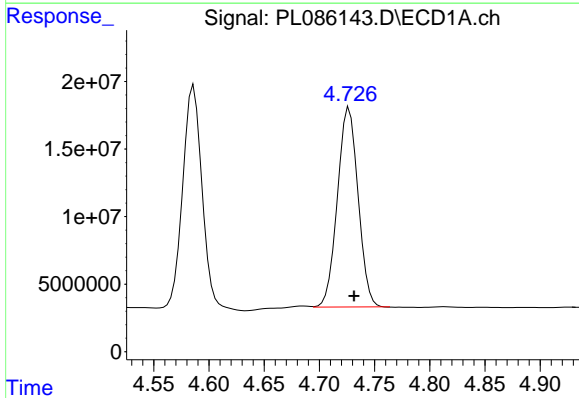
Instrument :
 ECD_L
 ClientSampleId :
 PSTDCCC050

Manual Integrations
 APPROVED

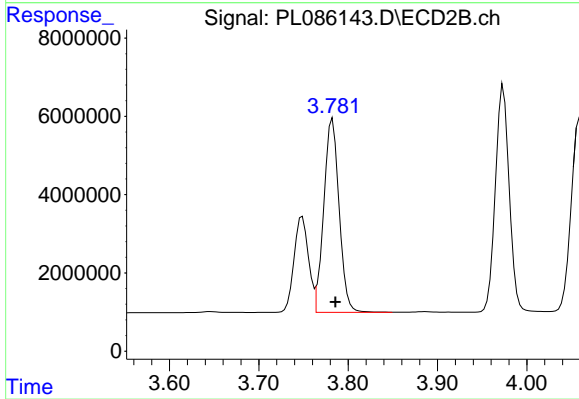
Reviewed By :Abdul Mirza 10/25/2023
 Supervised By :Ankita Jodhani 10/25/2023



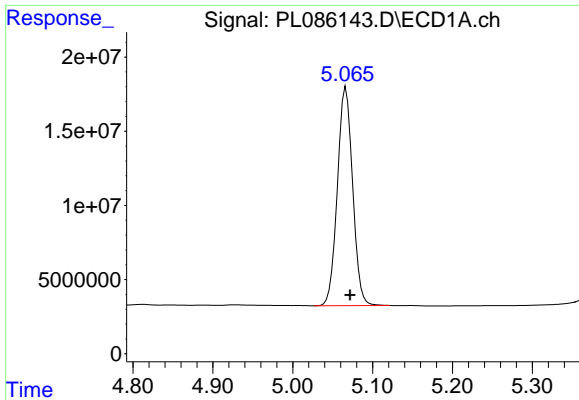
#3 gamma-BHC (Lindane)
 R.T.: 3.447 min
 Delta R.T.: -0.002 min
 Response: 62897239
 Conc: 51.00 ng/ml



#4 Heptachlor
 R.T.: 4.726 min
 Delta R.T.: -0.006 min
 Response: 192557811
 Conc: 49.79 ng/ml m



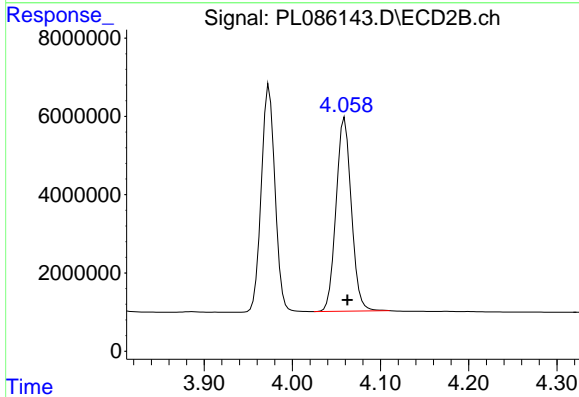
#4 Heptachlor
 R.T.: 3.783 min
 Delta R.T.: -0.003 min
 Response: 59104962
 Conc: 50.82 ng/ml



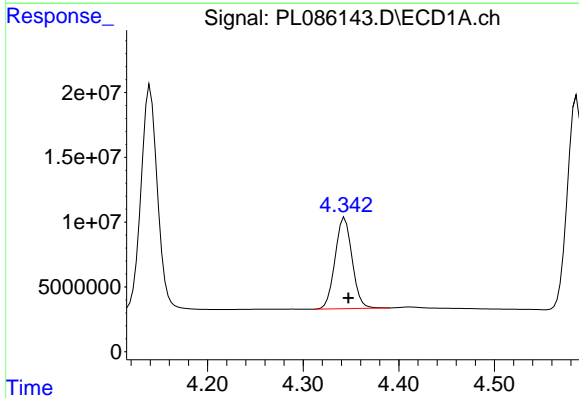
#5 Aldrin
 R.T.: 5.067 min
 Delta R.T.: -0.005 min
 Response: 195359449
 Conc: 50.40 ng/ml

Instrument :
 ECD_L
 ClientSampleId :
 PSTDCCC050

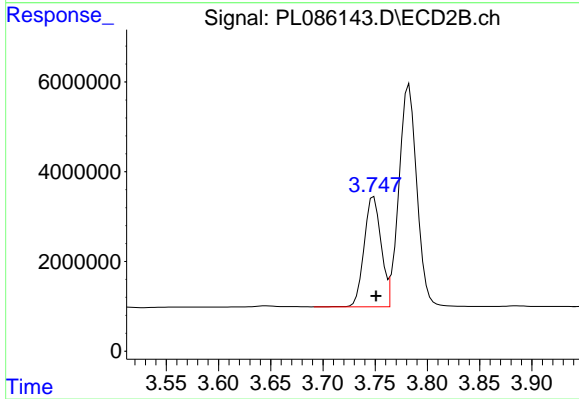
Manual Integrations
APPROVED
 Reviewed By :Abdul Mirza 10/25/2023
 Supervised By :Ankita Jodhani 10/25/2023



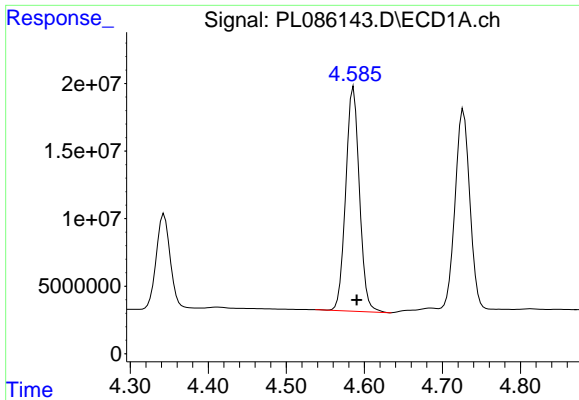
#5 Aldrin
 R.T.: 4.059 min
 Delta R.T.: -0.003 min
 Response: 59525135
 Conc: 53.23 ng/ml



#6 beta-BHC
 R.T.: 4.343 min
 Delta R.T.: -0.004 min
 Response: 87225564
 Conc: 52.75 ng/ml



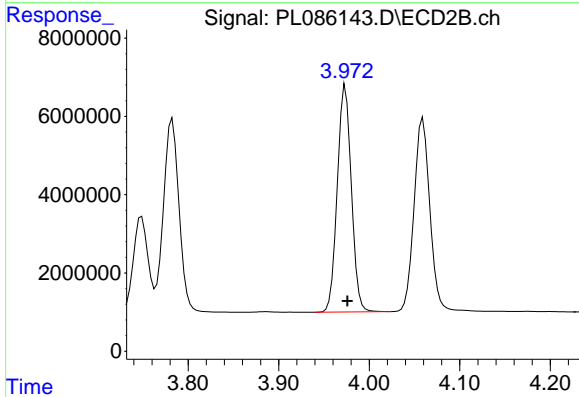
#6 beta-BHC
 R.T.: 3.749 min
 Delta R.T.: -0.002 min
 Response: 27717739
 Conc: 53.24 ng/ml



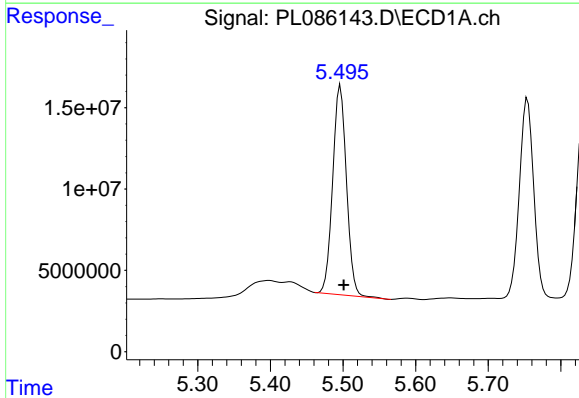
#7 delta-BHC
 R.T.: 4.586 min
 Delta R.T.: -0.004 min
 Response: 202474233
 Conc: 52.80 ng/ml

Instrument : ECD_L
 ClientSampleId : PSTDCCC050

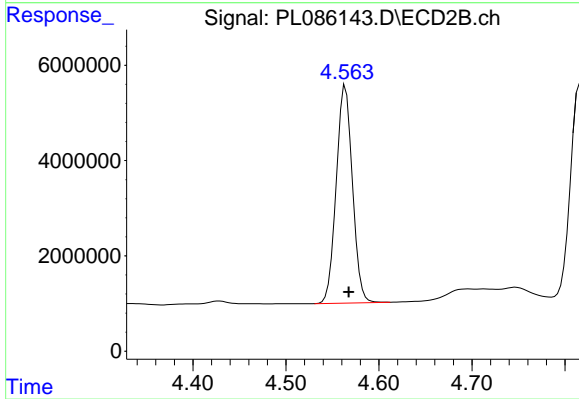
Manual Integrations
APPROVED
 Reviewed By :Abdul Mirza 10/25/2023
 Supervised By :Ankita Jodhani 10/25/2023



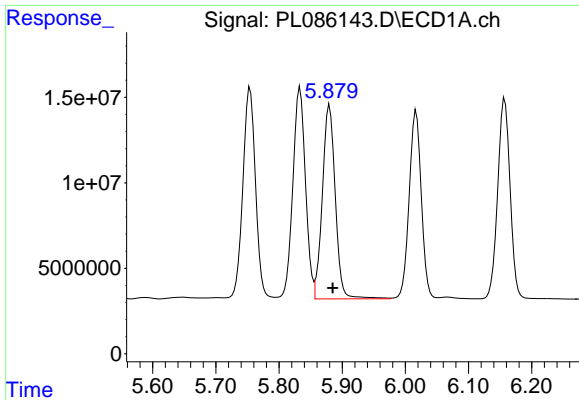
#7 delta-BHC
 R.T.: 3.974 min
 Delta R.T.: -0.002 min
 Response: 62417603
 Conc: 54.32 ng/ml



#8 Heptachlor epoxide
 R.T.: 5.497 min
 Delta R.T.: -0.004 min
 Response: 169963289
 Conc: 49.27 ng/ml



#8 Heptachlor epoxide
 R.T.: 4.564 min
 Delta R.T.: -0.003 min
 Response: 55282129
 Conc: 55.04 ng/ml



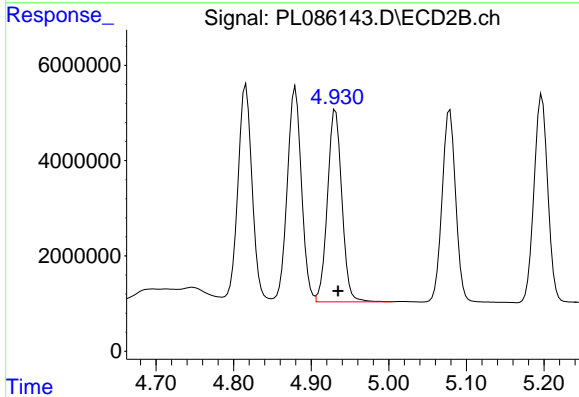
#9 Endosulfan I

R.T.: 5.880 min
 Delta R.T.: -0.005 min
 Response: 161618436
 Conc: 49.97 ng/ml

Instrument :
 ECD_L
 ClientSampleId :
 PSTDCCC050

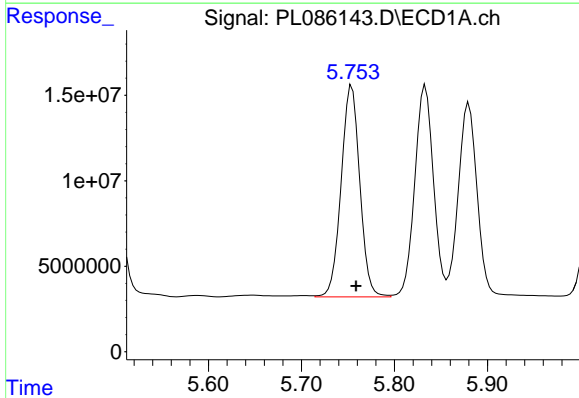
Manual Integrations
 APPROVED

Reviewed By :Abdul Mirza 10/25/2023
 Supervised By :Ankita Jodhani 10/25/2023



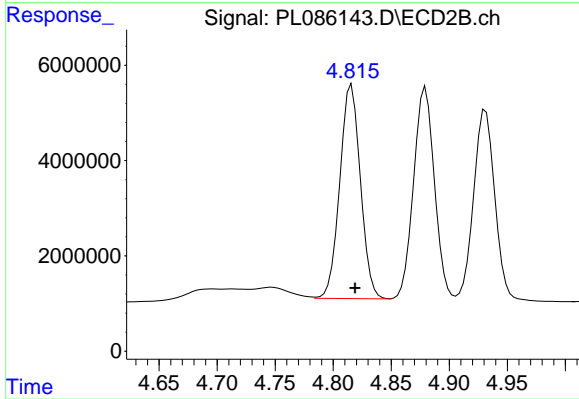
#9 Endosulfan I

R.T.: 4.931 min
 Delta R.T.: -0.003 min
 Response: 52059470
 Conc: 48.53 ng/ml



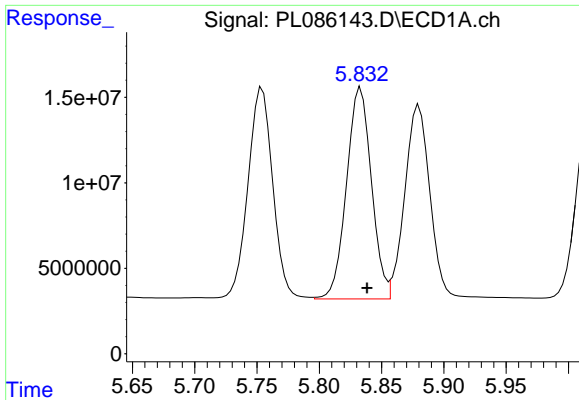
#10 gamma-Chlordane

R.T.: 5.754 min
 Delta R.T.: -0.005 min
 Response: 172435629
 Conc: 50.40 ng/ml



#10 gamma-Chlordane

R.T.: 4.815 min
 Delta R.T.: -0.004 min
 Response: 55517964
 Conc: 56.06 ng/ml m



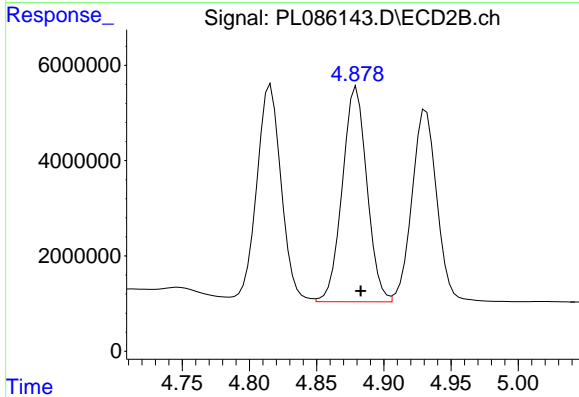
#11 alpha-Chlordane

R.T.: 5.833 min
 Delta R.T.: -0.005 min
 Response: 172717134
 Conc: 50.54 ng/ml

Instrument :
 ECD_L
 ClientSampleId :
 PSTDCCC050

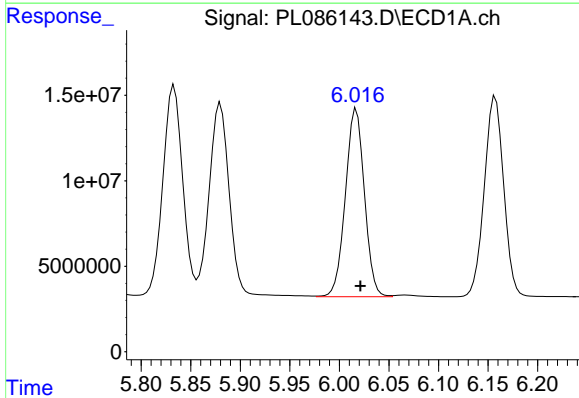
Manual Integrations
 APPROVED

Reviewed By :Abdul Mirza 10/25/2023
 Supervised By :Ankita Jodhani 10/25/2023



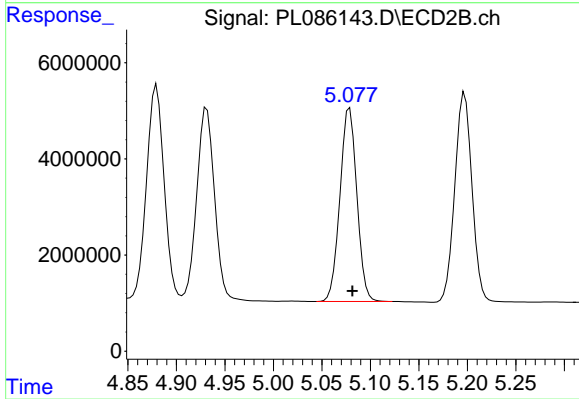
#11 alpha-Chlordane

R.T.: 4.880 min
 Delta R.T.: -0.003 min
 Response: 57311188
 Conc: 52.54 ng/ml



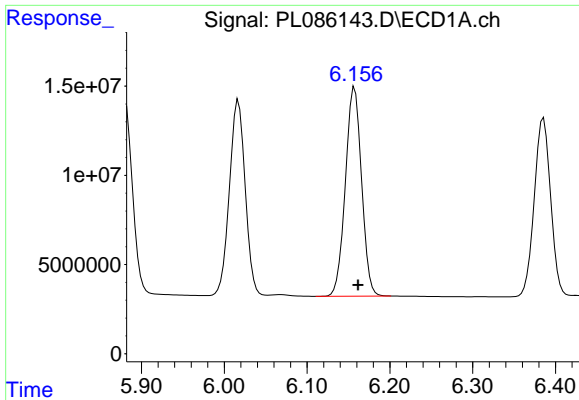
#12 4,4'-DDE

R.T.: 6.017 min
 Delta R.T.: -0.004 min
 Response: 147199715
 Conc: 52.64 ng/ml



#12 4,4'-DDE

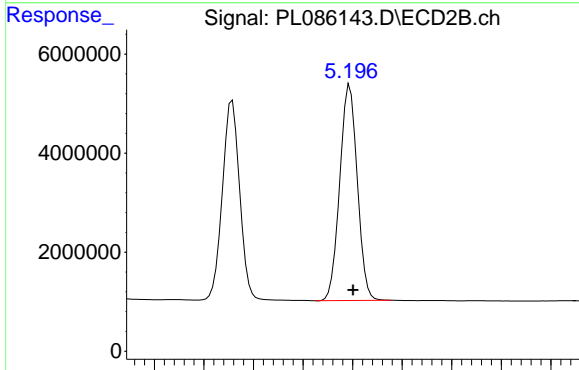
R.T.: 5.077 min
 Delta R.T.: -0.004 min
 Response: 48879264
 Conc: 59.53 ng/ml m



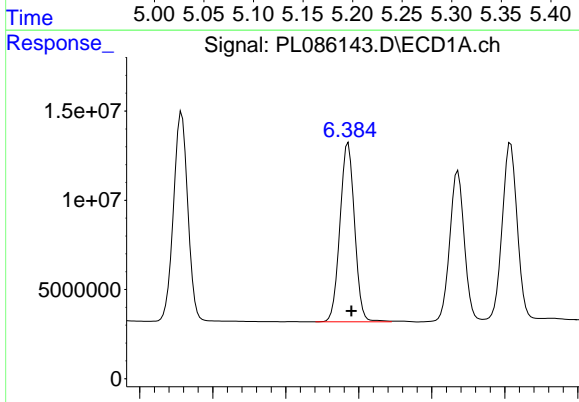
#13 Dieldrin
 R.T.: 6.157 min
 Delta R.T.: -0.004 min
 Response: 158832236
 Conc: 48.34 ng/ml

Instrument :
 ECD_L
 ClientSampleId :
 PSTDCCC050

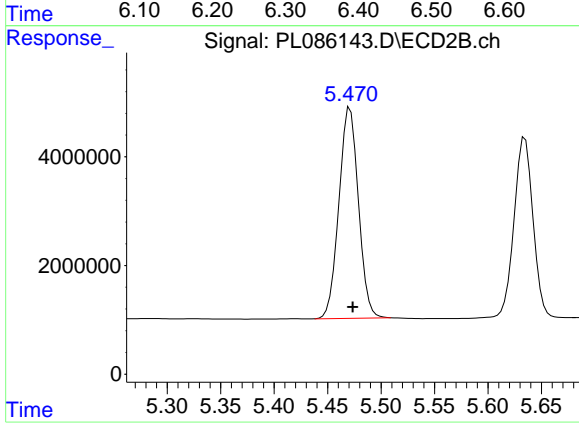
Manual Integrations
APPROVED
 Reviewed By :Abdul Mirza 10/25/2023
 Supervised By :Ankita Jodhani 10/25/2023



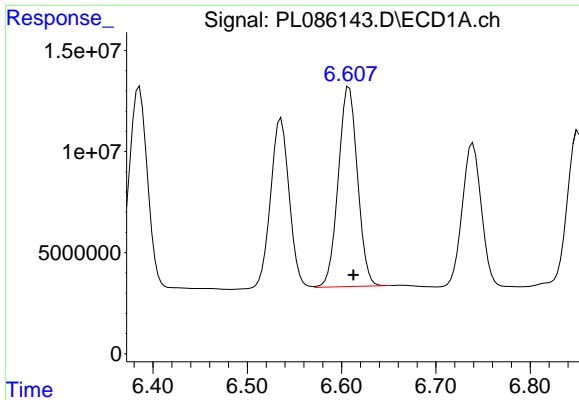
#13 Dieldrin
 R.T.: 5.197 min
 Delta R.T.: -0.003 min
 Response: 53656517
 Conc: 55.30 ng/ml



#14 Endrin
 R.T.: 6.386 min
 Delta R.T.: -0.004 min
 Response: 139344307
 Conc: 48.90 ng/ml



#14 Endrin
 R.T.: 5.471 min
 Delta R.T.: -0.003 min
 Response: 49334378
 Conc: 54.88 ng/ml



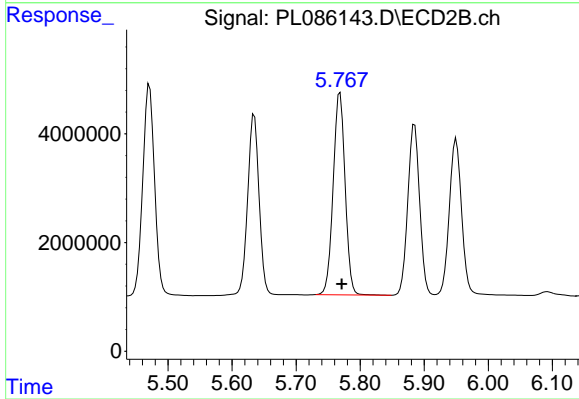
#15 Endosulfan II

R.T.: 6.608 min
 Delta R.T.: -0.004 min
 Response: 140169914
 Conc: 50.87 ng/ml

Instrument :
 ECD_L
 ClientSampleId :
 PSTDCCC050

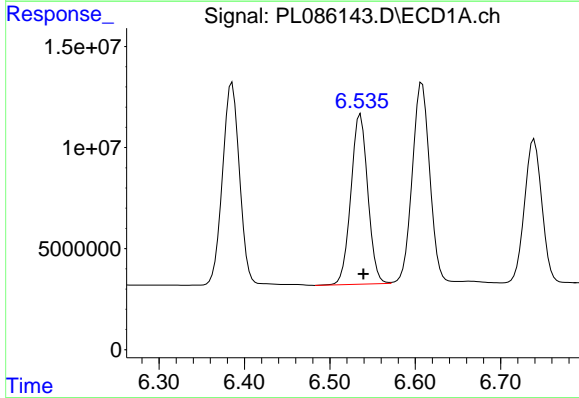
Manual Integrations
 APPROVED

Reviewed By :Abdul Mirza 10/25/2023
 Supervised By :Ankita Jodhani 10/25/2023



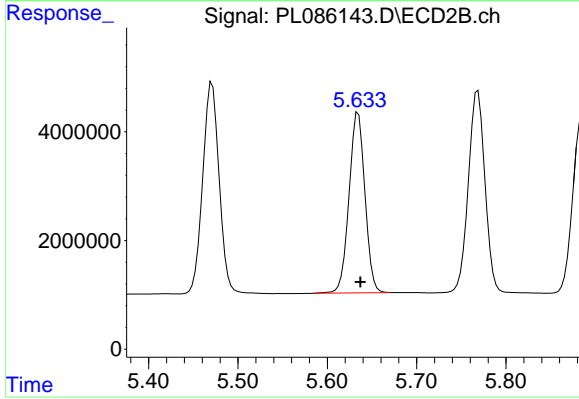
#15 Endosulfan II

R.T.: 5.769 min
 Delta R.T.: -0.003 min
 Response: 48246139
 Conc: 50.74 ng/ml



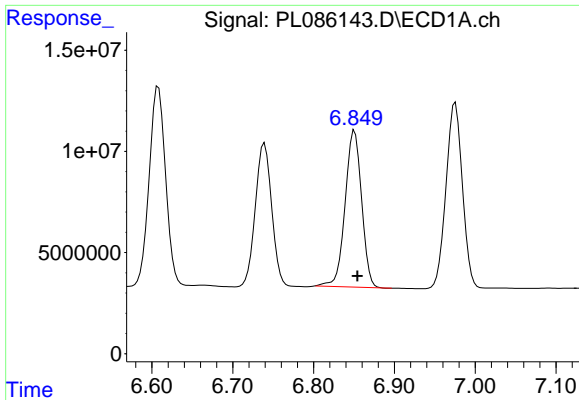
#16 4,4'-DDD

R.T.: 6.536 min
 Delta R.T.: -0.003 min
 Response: 115324501
 Conc: 57.24 ng/ml



#16 4,4'-DDD

R.T.: 5.635 min
 Delta R.T.: -0.003 min
 Response: 41074373
 Conc: 59.01 ng/ml



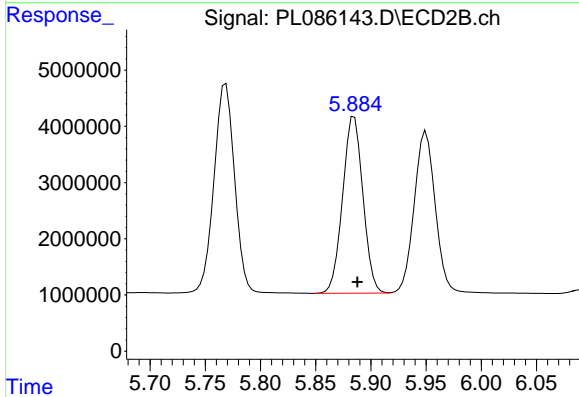
#17 4,4'-DDT

R.T.: 6.851 min
 Delta R.T.: -0.003 min
 Response: 109792731
 Conc: 46.58 ng/ml

Instrument :
 ECD_L
 ClientSampleId :
 PSTDCCC050

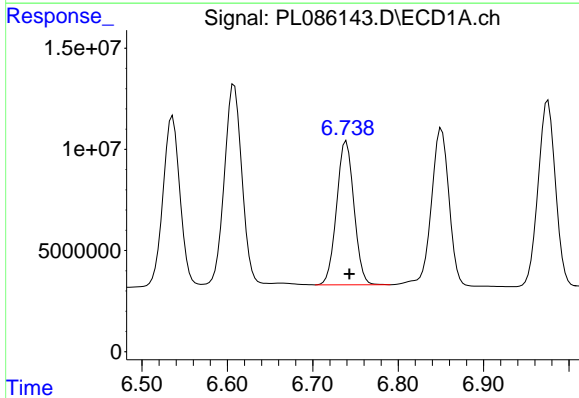
Manual Integrations
 APPROVED

Reviewed By :Abdul Mirza 10/25/2023
 Supervised By :Ankita Jodhani 10/25/2023



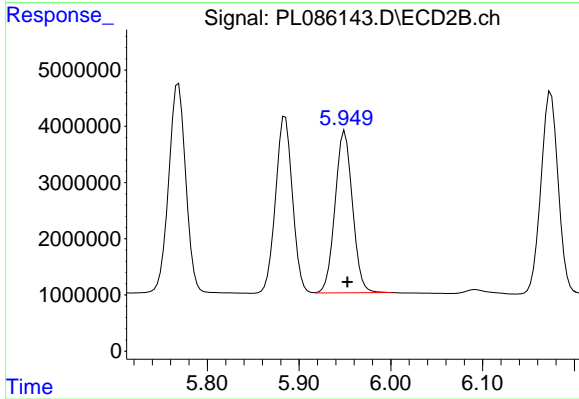
#17 4,4'-DDT

R.T.: 5.885 min
 Delta R.T.: -0.003 min
 Response: 40195701
 Conc: 50.83 ng/ml



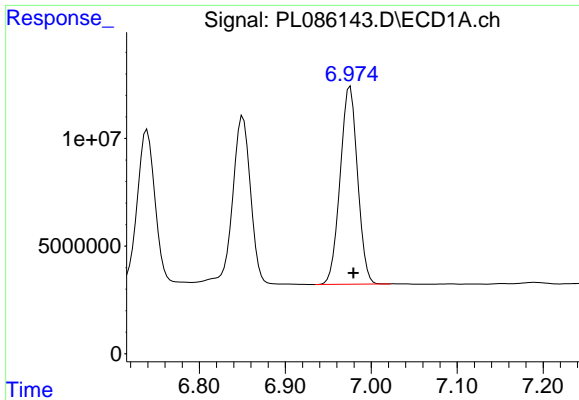
#18 Endrin aldehyde

R.T.: 6.739 min
 Delta R.T.: -0.004 min
 Response: 100163871
 Conc: 49.42 ng/ml



#18 Endrin aldehyde

R.T.: 5.950 min
 Delta R.T.: -0.003 min
 Response: 37980323
 Conc: 50.93 ng/ml

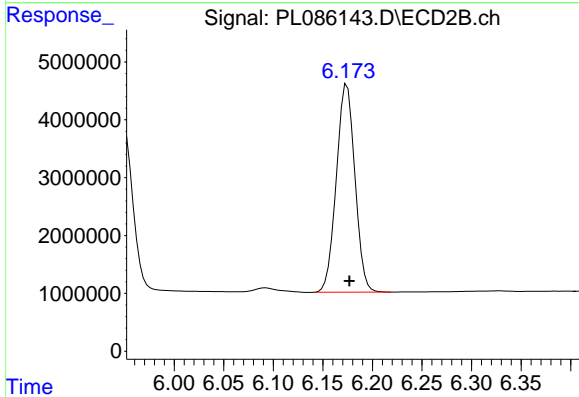


#19 Endosulfan Sulfate
 R.T.: 6.975 min
 Delta R.T.: -0.004 min
 Response: 129375310
 Conc: 51.55 ng/ml

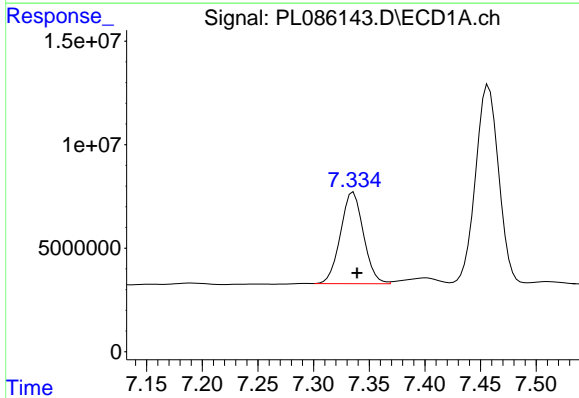
Instrument :
 ECD_L
 ClientSampleId :
 PSTDCCC050

Manual Integrations
 APPROVED

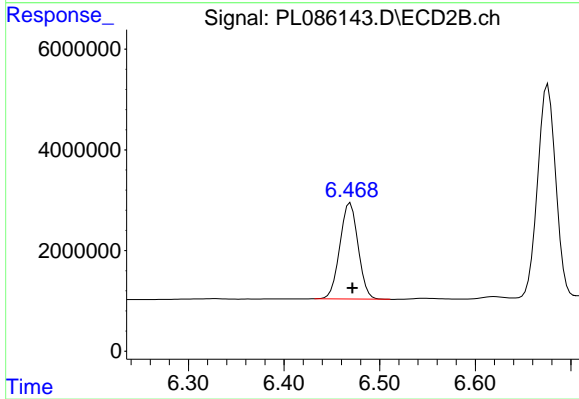
Reviewed By :Abdul Mirza 10/25/2023
 Supervised By :Ankita Jodhani 10/25/2023



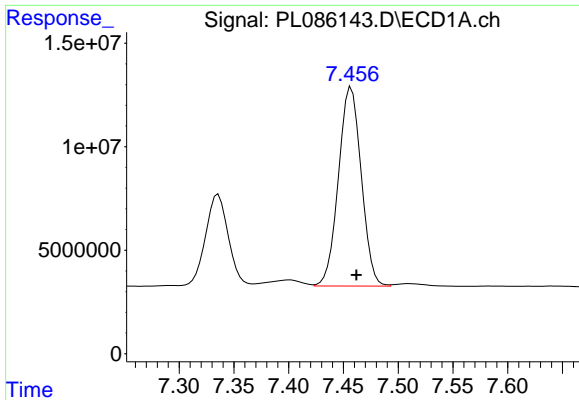
#19 Endosulfan Sulfate
 R.T.: 6.174 min
 Delta R.T.: -0.002 min
 Response: 46959541
 Conc: 52.05 ng/ml



#20 Methoxychlor
 R.T.: 7.336 min
 Delta R.T.: -0.003 min
 Response: 63429636
 Conc: 45.42 ng/ml



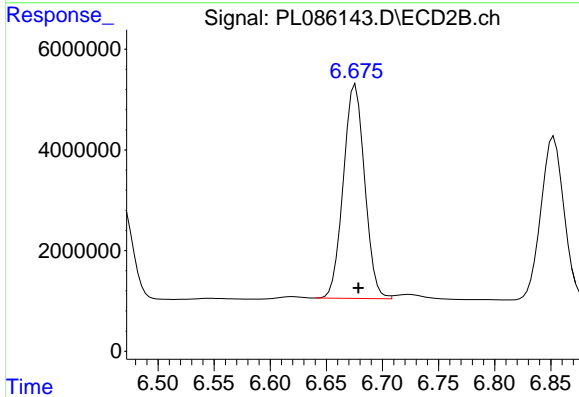
#20 Methoxychlor
 R.T.: 6.469 min
 Delta R.T.: -0.002 min
 Response: 25417748
 Conc: 48.32 ng/ml



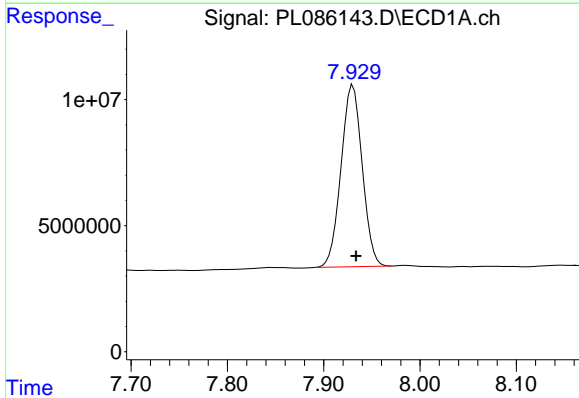
#21 Endrin ketone
 R.T.: 7.457 min
 Delta R.T.: -0.005 min
 Response: 139215547
 Conc: 48.33 ng/ml

Instrument : ECD_L
 ClientSampleId : PSTDCCC050

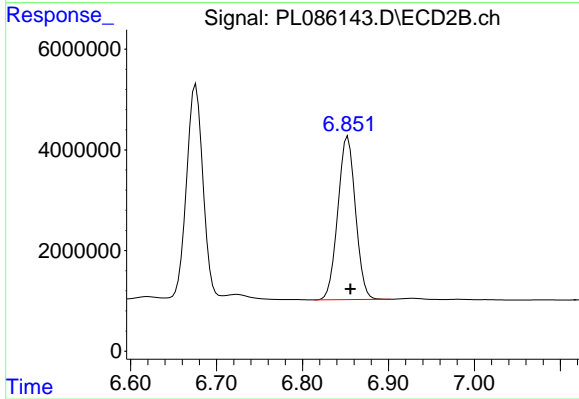
Manual Integrations
APPROVED
 Reviewed By :Abdul Mirza 10/25/2023
 Supervised By :Ankita Jodhani 10/25/2023



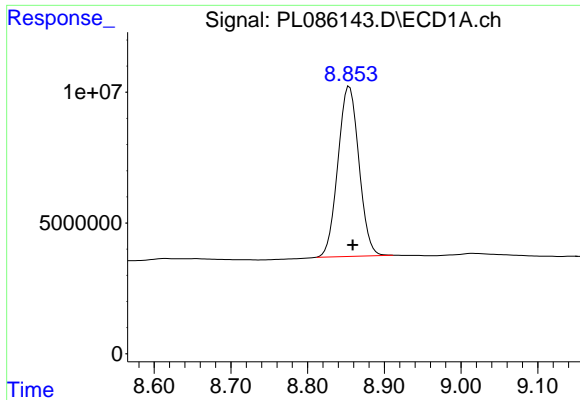
#21 Endrin ketone
 R.T.: 6.676 min
 Delta R.T.: -0.002 min
 Response: 56202431
 Conc: 48.90 ng/ml



#22 Mirex
 R.T.: 7.930 min
 Delta R.T.: -0.003 min
 Response: 110001629
 Conc: 49.68 ng/ml



#22 Mirex
 R.T.: 6.853 min
 Delta R.T.: -0.003 min
 Response: 46228324
 Conc: 49.01 ng/ml

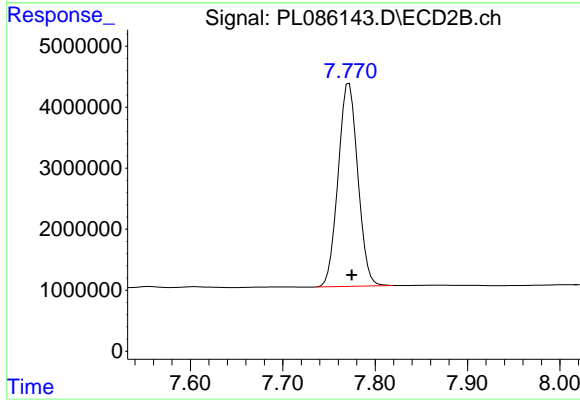


#28 Decachlorobiphenyl
R.T.: 8.854 min
Delta R.T.: -0.004 min
Response: 124027361
Conc: 56.94 ng/ml

Instrument :
ECD_L
ClientSampleId :
PSTDCCC050

Manual Integrations
APPROVED

Reviewed By :Abdul Mirza 10/25/2023
Supervised By :Ankita Jodhani 10/25/2023



#28 Decachlorobiphenyl
R.T.: 7.772 min
Delta R.T.: -0.003 min
Response: 49355168
Conc: 53.47 ng/ml