

Data Path : Z:\pestpcbsrv\HPCHEM1\ECD_L\Data\PL102618\
 Data File : PL041420.D
 Signal(s) : Signal #1: ECD1A.ch Signal #2: ECD2B.ch
 Acq On : 26 Oct 2018 23:27
 Operator : AJ\SJ
 Sample : J5205-06
 Misc :
 ALS Vial : 42 Sample Multiplier: 1

Instrument :
 ECD_L
 ClientSampleId :

Integration File signal 1: autoint1.e
 Integration File signal 2: autoint2.e
 Quant Time: Oct 27 01:03:18 2018
 Quant Method : Z:\pestpcbsrv\HPCHEM1\ECD_L\methods\PL101118.M
 Quant Title : GC Extractables
 QLast Update : Thu Oct 11 03:28:36 2018
 Response via : Initial Calibration
 Integrator: ChemStation

Volume Inj. : 2 µl
 Signal #1 Phase : ZB-MR1 Signal #2 Phase: ZB-MR2
 Signal #1 Info : 30M x 0.32mm x0.5 Signal #2 Info : 30M x 0.32mm x0.25µm

	Compound	RT#1	RT#2	Resp#1	Resp#2	ng/ml	ng/ml

System Monitoring Compounds							
1)	SA Tetrachlo...	3.475	4.105	121.8E6	61599667	22.221	22.092
28)	SA Decachlor...	8.220	9.237	117.4E6	48868243	22.571	18.898
Target Compounds							
2)	A alpha-BHC	3.881f	0.000	1575511	0	0.199	N.D. #
3)	MA gamma-BHC...	0.000	4.835f	0	1636890	N.D.	0.460 #
4)	MA Heptachlor	4.454f	0.000	1578140	0	0.214	N.D. #
6)	B beta-BHC	4.454	0.000	1578140	0	0.497	N.D. #
7)	B delta-BHC	0.000	5.151f	0	959482	N.D.	0.292 #
17)	MA 4,4'-DDT	6.470f	0.000	2233208	0	0.490	N.D. #
18)	B Endrin al...	6.470	0.000	2233208	0	0.533	N.D. #
19)	B Endosulfa...	6.688	0.000	12488318	0	2.455	N.D. #
20)	A Methoxychlor	0.000	7.641f	0	4399049	N.D.	3.737 #
23)	Chlordane-1	4.386	5.151	3326085	959482	13.032	7.768 #

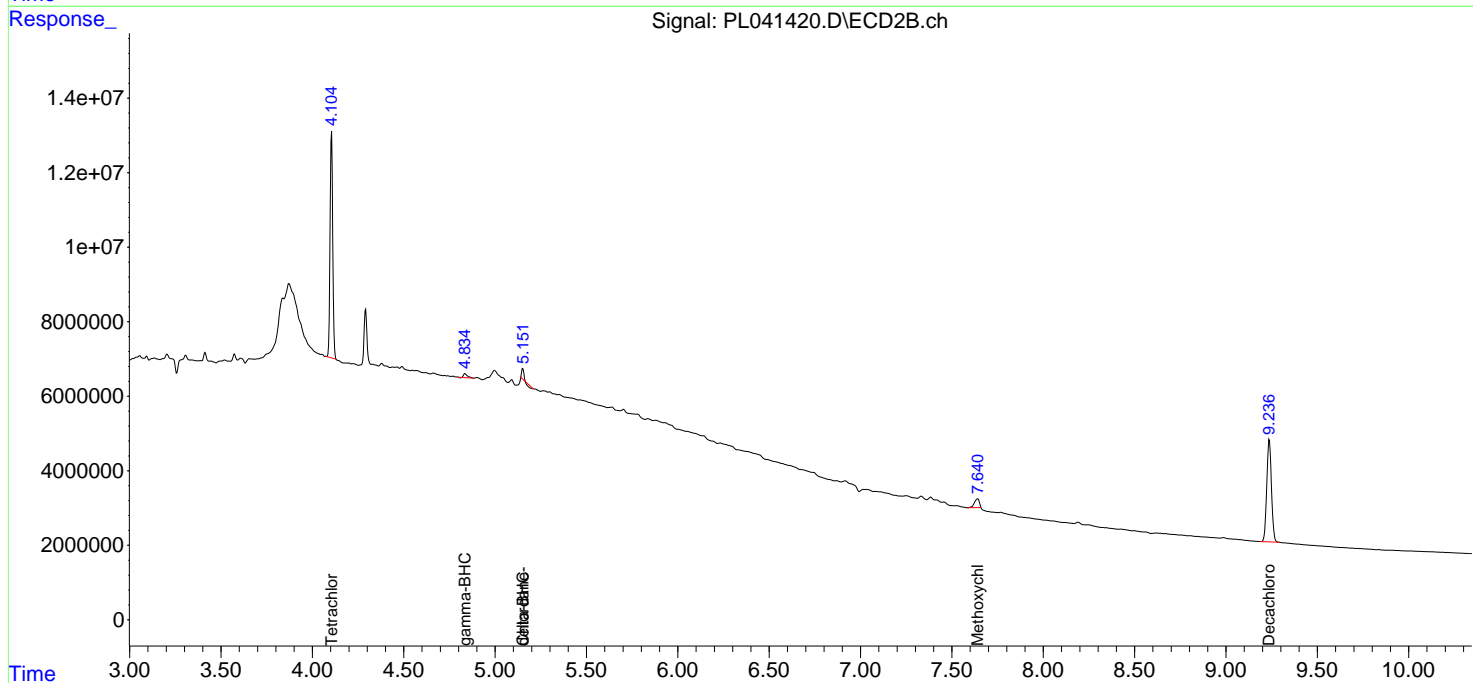
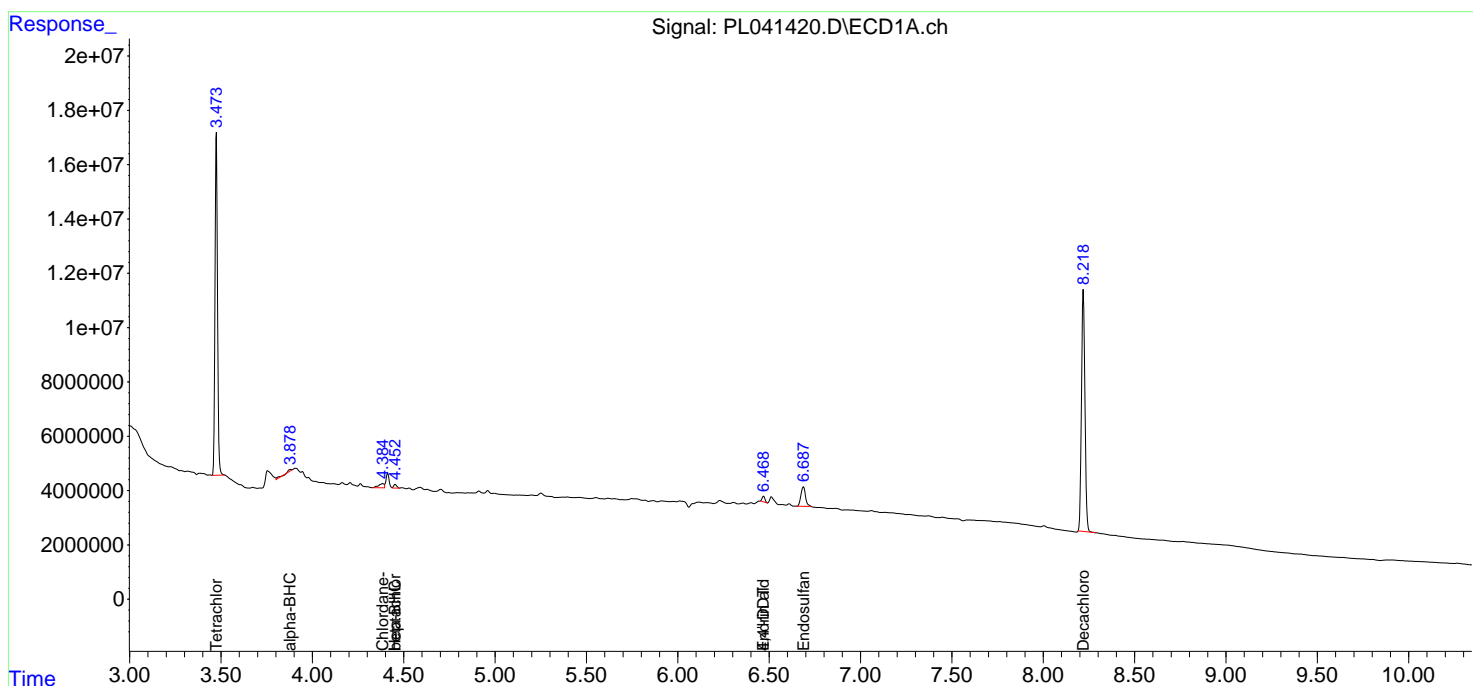
(f)=RT Delta > 1/2 Window (#)=Amounts differ by > 25% (m)=manual int.

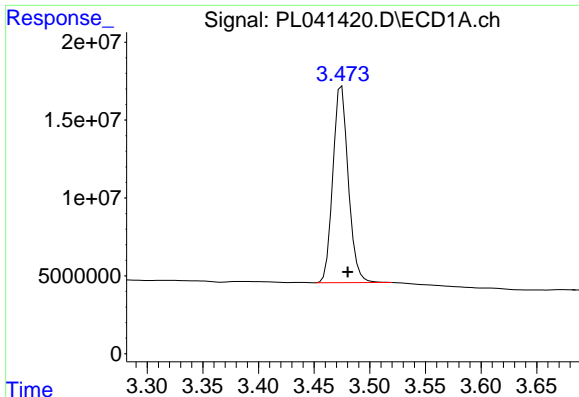
Data Path : Z:\pestpcbsrv\HPCHEM1\ECD_L\Data\PL102618\
 Data File : PL041420.D
 Signal(s) : Signal #1: ECD1A.ch Signal #2: ECD2B.ch
 Acq On : 26 Oct 2018 23:27
 Operator : AJ\SJ
 Sample : J5205-06
 Misc :
 ALS Vial : 42 Sample Multiplier: 1

Instrument :
 ECD_L
 ClientSampled :

Integration File signal 1: autoint1.e
 Integration File signal 2: autoint2.e
 Quant Time: Oct 27 01:03:18 2018
 Quant Method : Z:\pestpcbsrv\HPCHEM1\ECD_L\methods\PL101118.M
 Quant Title : GC Extractables
 QLast Update : Thu Oct 11 03:28:36 2018
 Response via : Initial Calibration
 Integrator: ChemStation

Volume Inj. : 2 µl
 Signal #1 Phase : ZB-MR1 Signal #2 Phase: ZB-MR2
 Signal #1 Info : 30M x 0.32mm x0.5 Signal #2 Info : 30M x 0.32mm x0.25µm

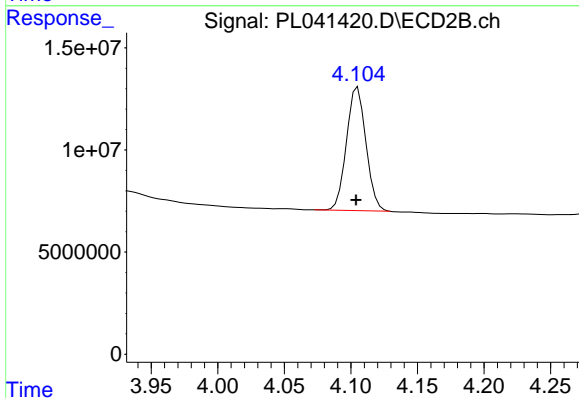




#1 Tetrachloro-m-xylene

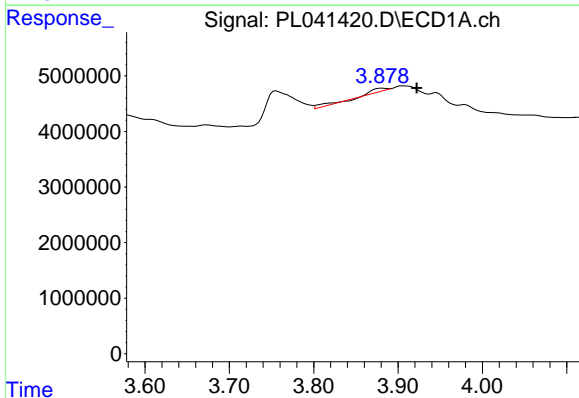
R.T.: 3.475 min
 Delta R.T.: -0.005 min
 Response: 121788256
 Conc: 22.22 ng/ml

Instrument :
 ECD_L
 ClientSampleId :



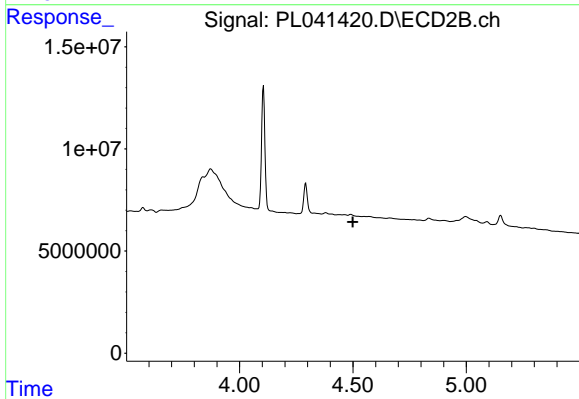
#1 Tetrachloro-m-xylene

R.T.: 4.105 min
 Delta R.T.: 0.001 min
 Response: 61599667
 Conc: 22.09 ng/ml



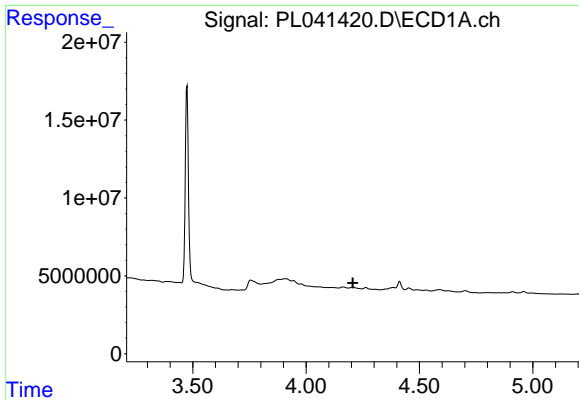
#2 alpha-BHC

R.T.: 3.881 min
 Delta R.T.: -0.041 min
 Response: 1575511
 Conc: 0.20 ng/ml



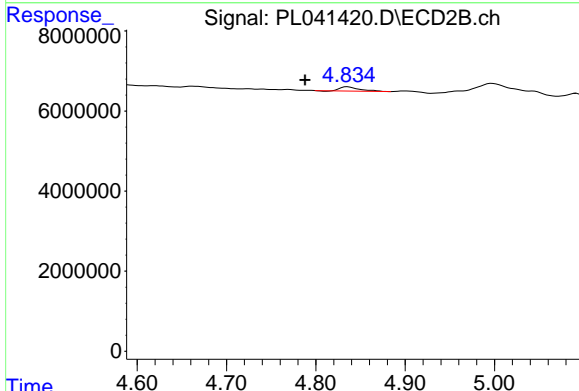
#2 alpha-BHC

R.T.: 0.000 min
 Exp R.T. : 4.499 min
 Response: 0
 Conc: N.D.

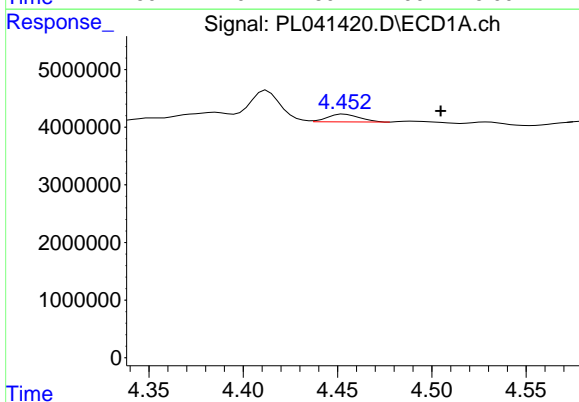


#3 gamma-BHC (Lindane)
 R.T.: 0.000 min
 Exp R.T.: 4.206 min
 Response: 0
 Conc: N.D.

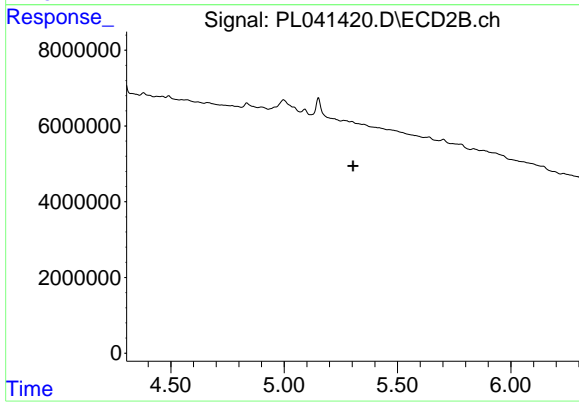
Instrument :
 ECD_L
 ClientSampleId :



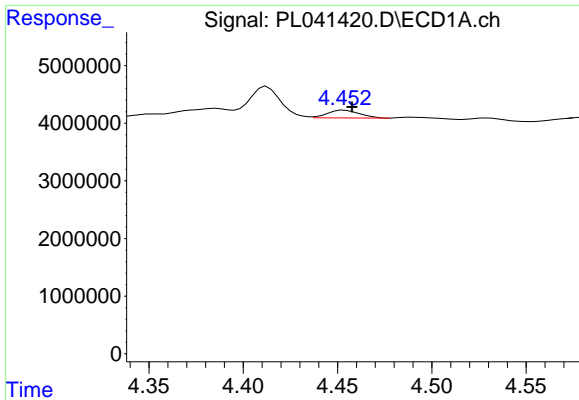
#3 gamma-BHC (Lindane)
 R.T.: 4.835 min
 Delta R.T.: 0.047 min
 Response: 1636890
 Conc: 0.46 ng/ml



#4 Heptachlor
 R.T.: 4.454 min
 Delta R.T.: -0.051 min
 Response: 1578140
 Conc: 0.21 ng/ml

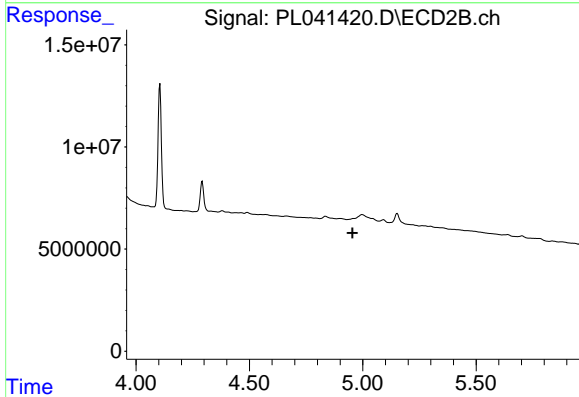


#4 Heptachlor
 R.T.: 0.000 min
 Exp R.T.: 5.304 min
 Response: 0
 Conc: N.D.

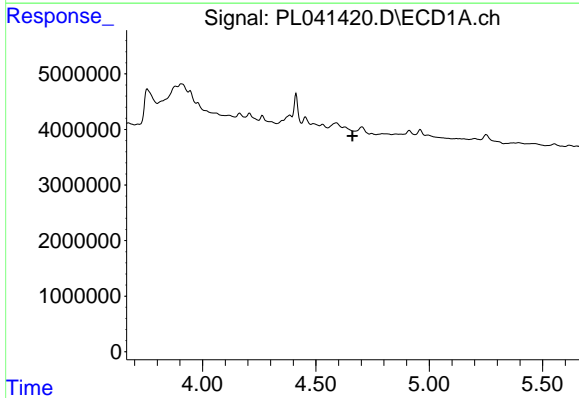


#6 beta-BHC
 R.T.: 4.454 min
 Delta R.T.: -0.004 min
 Response: 1578140
 Conc: 0.50 ng/ml

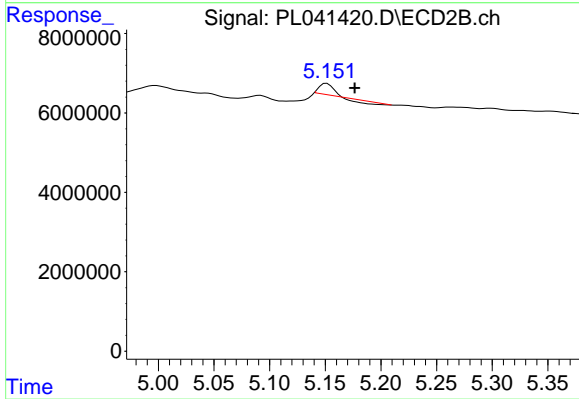
Instrument :
 ECD_L
 ClientSampled :



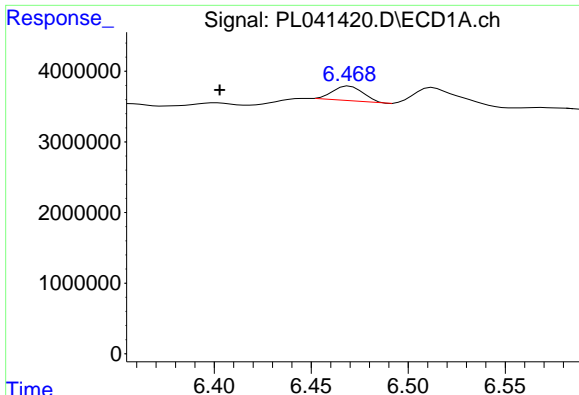
#6 beta-BHC
 R.T.: 0.000 min
 Exp R.T. : 4.955 min
 Response: 0
 Conc: N.D.



#7 delta-BHC
 R.T.: 0.000 min
 Exp R.T. : 4.662 min
 Response: 0
 Conc: N.D.

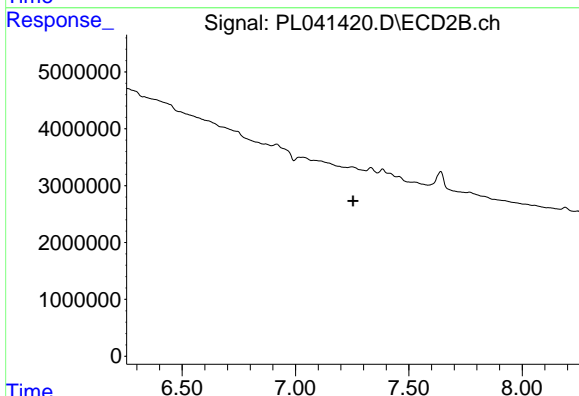


#7 delta-BHC
 R.T.: 5.151 min
 Delta R.T.: -0.025 min
 Response: 959482
 Conc: 0.29 ng/ml

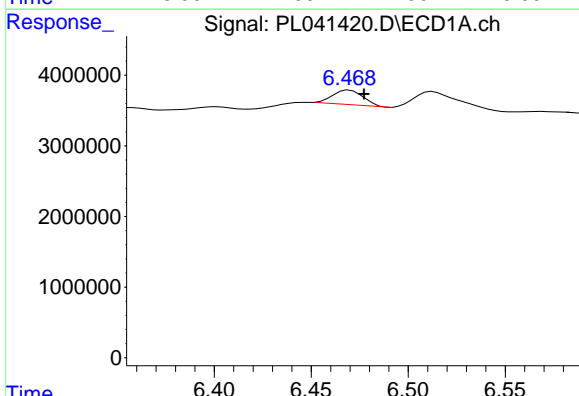


#17 4,4'-DDT
 R.T.: 6.470 min
 Delta R.T.: 0.067 min
 Response: 2233208
 Conc: 0.49 ng/ml

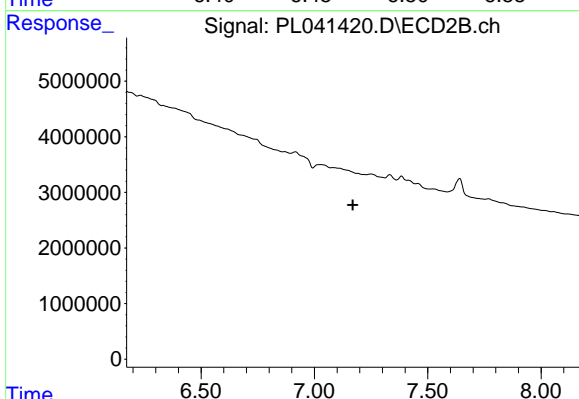
Instrument :
 ECD_L
 ClientSampled :



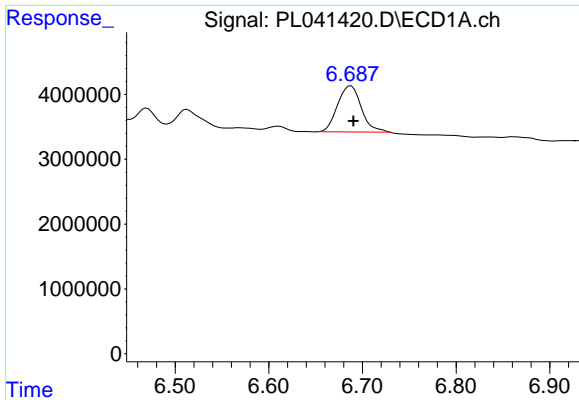
#17 4,4'-DDT
 R.T.: 0.000 min
 Exp R.T. : 7.254 min
 Response: 0
 Conc: N.D.



#18 Endrin aldehyde
 R.T.: 6.470 min
 Delta R.T.: -0.008 min
 Response: 2233208
 Conc: 0.53 ng/ml



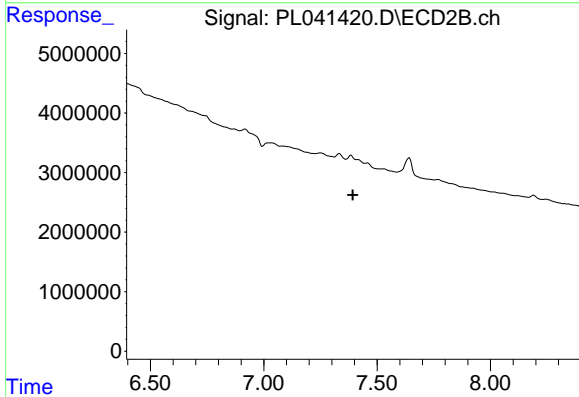
#18 Endrin aldehyde
 R.T.: 0.000 min
 Exp R.T. : 7.169 min
 Response: 0
 Conc: N.D.



#19 Endosulfan Sulfate

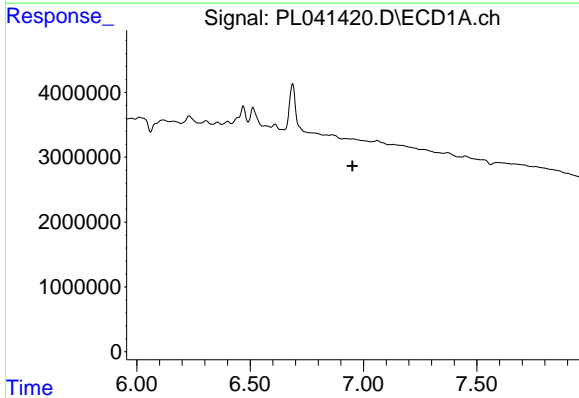
R.T.: 6.688 min
 Delta R.T.: -0.003 min
 Response: 12488318
 Conc: 2.45 ng/ml

Instrument :
 ECD_L
 ClientSampleId :



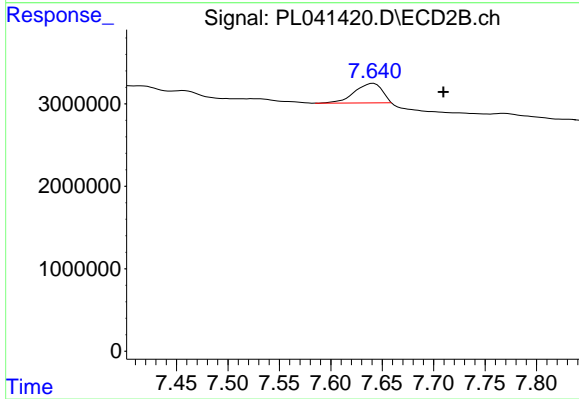
#19 Endosulfan Sulfate

R.T.: 0.000 min
 Exp R.T. : 7.392 min
 Response: 0
 Conc: N.D.



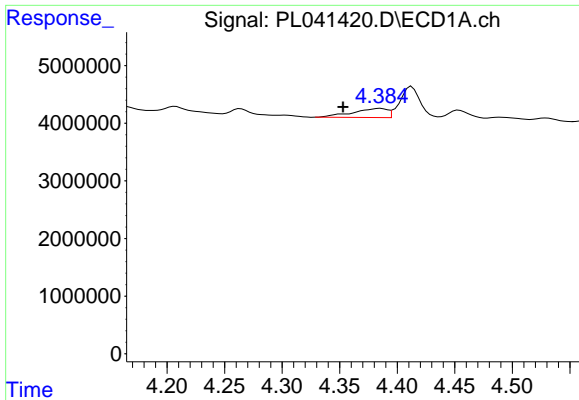
#20 Methoxychlor

R.T.: 0.000 min
 Exp R.T. : 6.952 min
 Response: 0
 Conc: N.D.



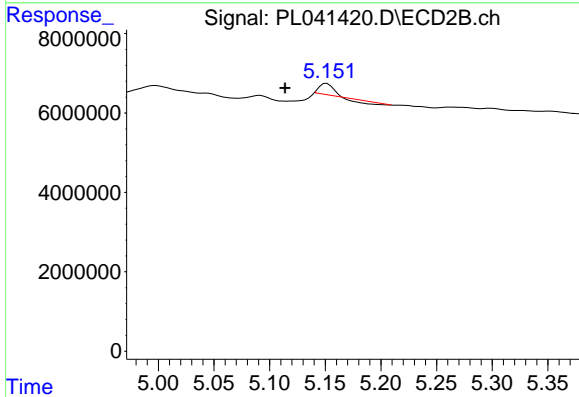
#20 Methoxychlor

R.T.: 7.641 min
 Delta R.T.: -0.068 min
 Response: 4399049
 Conc: 3.74 ng/ml

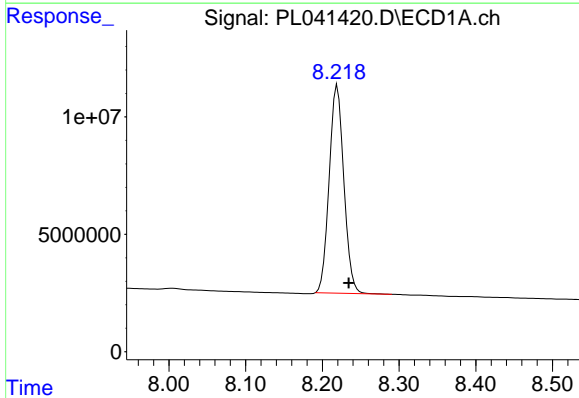


#23 Chlordane-1
R.T.: 4.386 min
Delta R.T.: 0.033 min
Response: 3326085
Conc: 13.03 ng/ml

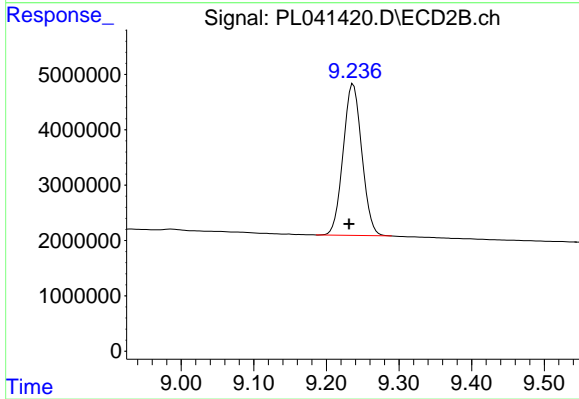
Instrument :
ECD_L
ClientSampled :



#23 Chlordane-1
R.T.: 5.151 min
Delta R.T.: 0.038 min
Response: 959482
Conc: 7.77 ng/ml



#28 Decachlorobiphenyl
R.T.: 8.220 min
Delta R.T.: -0.015 min
Response: 117359795
Conc: 22.57 ng/ml



#28 Decachlorobiphenyl
R.T.: 9.237 min
Delta R.T.: 0.006 min
Response: 48868243
Conc: 18.90 ng/ml