

Data Path : Z:\pestpcbsrv\HPCHEM1\ECD_L\Data\PL102621\
 Data File : PL070603.D
 Signal(s) : Signal #1: ECD1A.ch Signal #2: ECD2B.ch
 Acq On : 27 Oct 2021 22:32
 Operator : AR\AJ
 Sample : PSTDCCC050
 Misc :
 ALS Vial : 100 Sample Multiplier: 1

Integration File signal 1: autoint1.e
 Integration File signal 2: autoint2.e
 Quant Time: Oct 28 04:14:41 2021
 Quant Method : Z:\pestpcbsrv\HPCHEM1\ECD_L\methods\PL102621.M
 Quant Title : GC Extractables
 QLast Update : Wed Oct 27 07:49:52 2021
 Response via : Initial Calibration
 Integrator: ChemStation

Volume Inj. : 1 µl
 Signal #1 Phase : ZB-MR2 Signal #2 Phase: ZB-MR1
 Signal #1 Info : 30M x 0.32mm x0.2 Signal #2 Info : 30M x 0.32mm x0.5µm

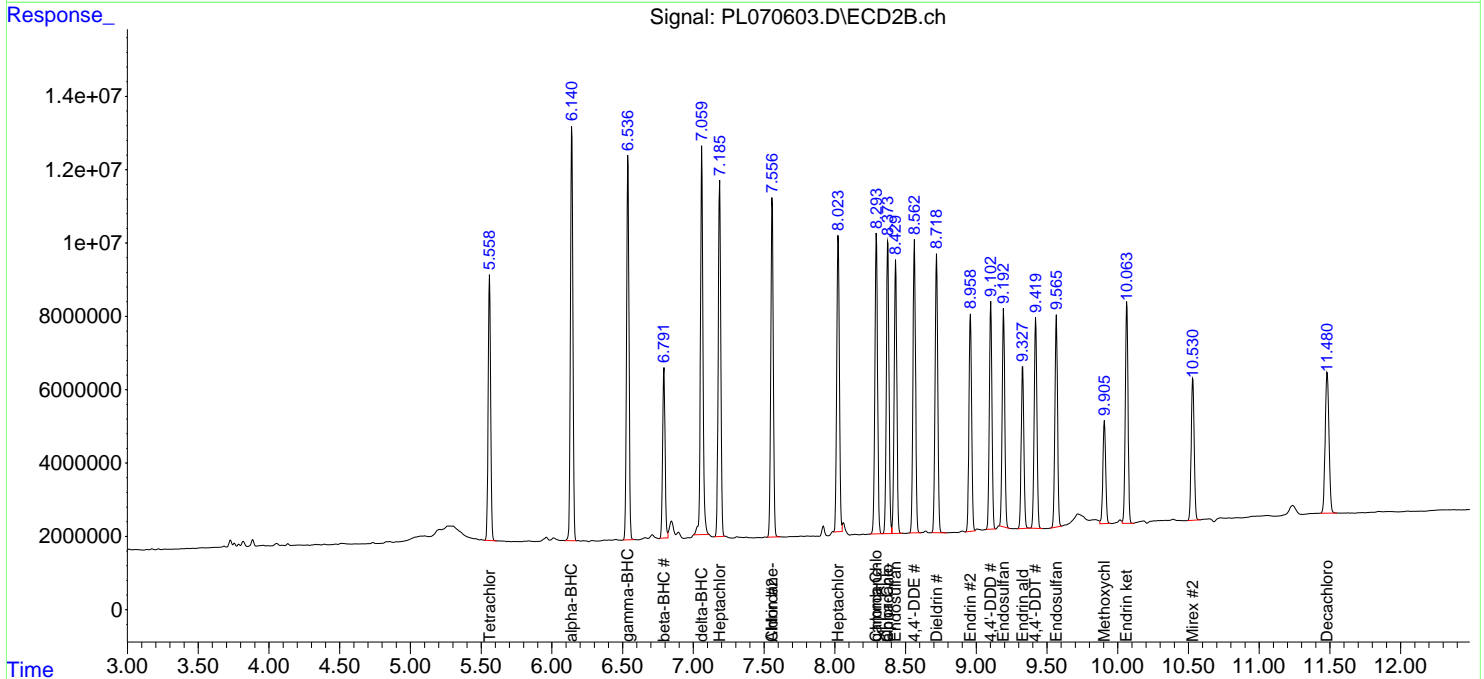
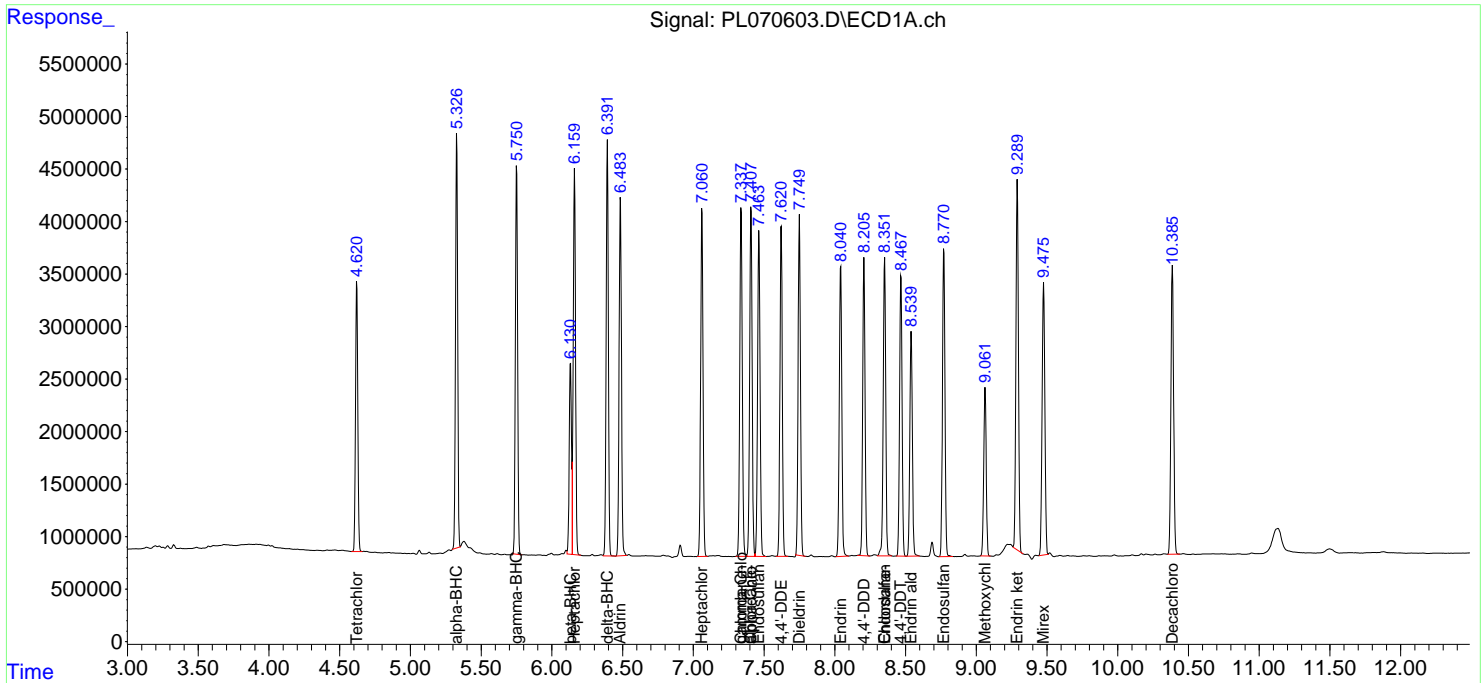
| Compound | RT#1 | RT#2 | Resp#1 | Resp#2 | ng/ml | ng/ml |
|-----------------------------|--------|--------|----------|----------|----------|------------|
| ----- | | | | | | |
| System Monitoring Compounds | | | | | | |
| 1) SA Tetrachlo... | 4.621 | 5.560 | 28169144 | 87579678 | 55.935 | 57.223 |
| 28) SA Decachlor... | 10.387 | 11.481 | 36894524 | 71799346 | 48.802 | 49.770 |
| Target Compounds | | | | | | |
| 2) A alpha-BHC | 5.328 | 6.141 | 41290752 | 135.0E6 | 59.469 | 57.794 |
| 3) MA gamma-BHC... | 5.751 | 6.538 | 40249258 | 126.0E6 | 57.356 | 57.664 |
| 4) MA Heptachlor | 6.160 | 7.186 | 41969489 | 124.0E6 | 54.641 | 53.924 |
| 5) MB Aldrin | 6.485 | 7.558 | 40022385 | 117.8E6 | 57.235 | 56.148 |
| 6) B beta-BHC | 6.132 | 6.792 | 19784695 | 56824074 | 56.454 | 53.909 |
| 7) B delta-BHC | 6.393 | 7.060 | 41719900 | 132.7E6 | 58.727 | 52.754 |
| 8) B Heptachlo... | 7.061 | 8.024 | 39269991 | 105.0E6 | 56.109 | 52.861 |
| 9) A Endosulfan I | 7.464 | 8.430 | 37319381 | 97932515 | 55.419 | 53.123 |
| 10) B gamma-Chl... | 7.338 | 8.294 | 40366706 | 107.4E6 | 56.331 | 53.798 |
| 11) B alpha-Chl... | 7.408 | 8.375 | 40276930 | 104.5E6 | 55.367 | 53.377 |
| 12) B 4,4'-DDE | 7.622 | 8.563 | 36792158 | 103.4E6 | 56.756 | 52.587 |
| 13) MA Dieldrin | 7.750 | 8.720 | 38093681 | 98658911 | 54.203 | 51.620 |
| 14) MA Endrin | 8.042 | 8.959 | 34073557 | 78050720 | 52.668 | 48.061 |
| 15) B Endosulfa... | 8.353 | 9.193 | 34682231 | 77536146 | 54.430 | 50.382 |
| 16) A 4,4'-DDD | 8.207 | 9.103 | 32357642 | 78239991 | 56.866 | 51.146 |
| 17) MA 4,4'-DDT | 8.468 | 9.420 | 32276567 | 76253749 | 50.540 | 44.132 |
| 18) B Endrin al... | 8.540 | 9.328 | 26432820 | 59021260 | 51.803 | 47.210 |
| 19) B Endosulfa... | 8.771 | 9.566 | 36007875 | 75962378 | 52.764 | 49.006 |
| 20) A Methoxychlor | 9.063 | 9.906 | 19732099 | 38677137 | 48.681 | 39.196 |
| 21) B Endrin ke... | 9.290 | 10.064 | 42589036 | 80863109 | 51.579 | 46.668 |
| 22) Mirex | 9.477 | 10.531 | 34658574 | 56875155 | 50.782 | 47.500 |
| 24) Chlordane-2 | 0.000 | 7.558f | 0 | 117.8E6 | N.D. | 1750.994 # |
| 25) Chlordane-3 | 7.338 | 8.294 | 40366706 | 107.4E6 | 599.029 | 401.861 # |
| 26) Chlordane-4 | 7.408 | 8.375 | 40276930 | 104.5E6 | 560.900 | 329.660 # |
| 27) Chlordane-5 | 8.353 | 0.000 | 34682231 | 0 | 1338.247 | N.D. # |

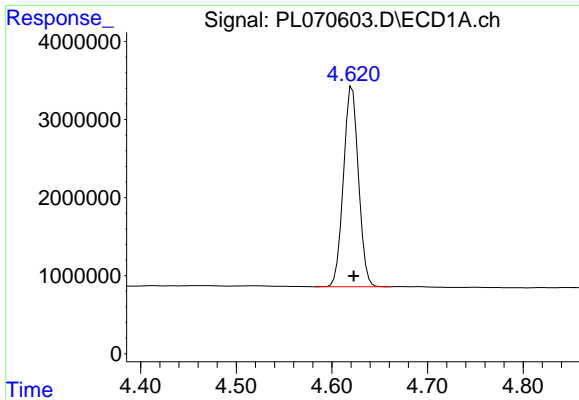
(f)=RT Delta > 1/2 Window (#)=Amounts differ by > 25% (m)=manual int.

Data Path : Z:\pestpcbsrv\HPCHEM1\ECD_L\Data\PL102621\
 Data File : PL070603.D
 Signal(s) : Signal #1: ECD1A.ch Signal #2: ECD2B.ch
 Acq On : 27 Oct 2021 22:32
 Operator : AR\AJ
 Sample : PSTDCCC050
 Misc :
 ALS Vial : 100 Sample Multiplier: 1

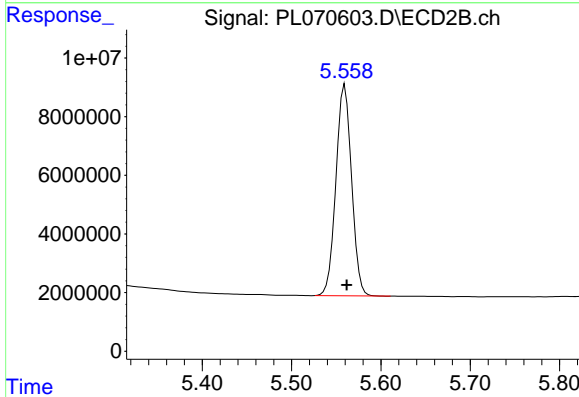
Integration File signal 1: autoint1.e
 Integration File signal 2: autoint2.e
 Quant Time: Oct 28 04:14:21 2021
 Quant Method : Z:\pestpcbsrv\HPCHEM1\ECD_L\methods\PL102621.M
 Quant Title : GC Extractables
 QLast Update : Wed Oct 27 07:49:52 2021
 Response via : Initial Calibration
 Integrator: ChemStation

Volume Inj. : 1 µl
 Signal #1 Phase : ZB-MR2 Signal #2 Phase: ZB-MR1
 Signal #1 Info : 30M x 0.32mm x0.2 Signal #2 Info : 30M x 0.32mm x0.5µm

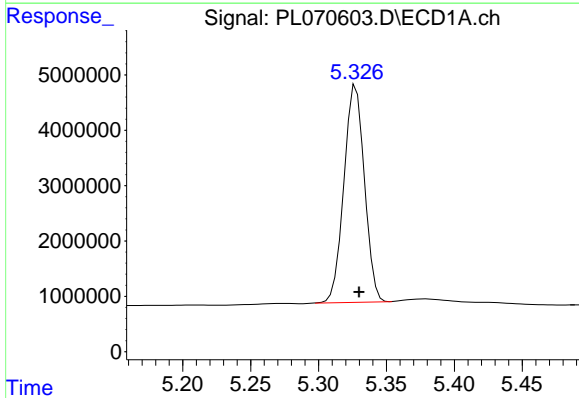




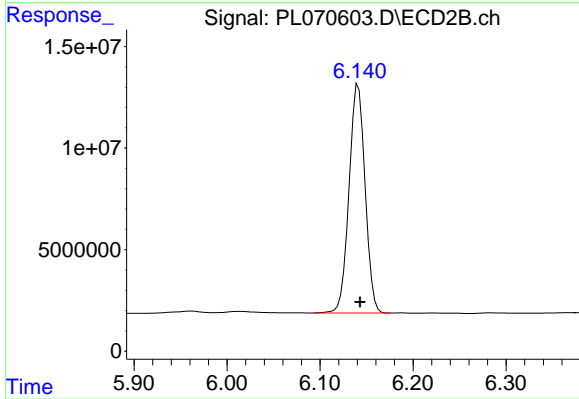
#1 Tetrachloro-m-xylene
 R.T.: 4.621 min
 Delta R.T.: -0.002 min
 Response: 28169144
 Conc: 55.93 ng/ml



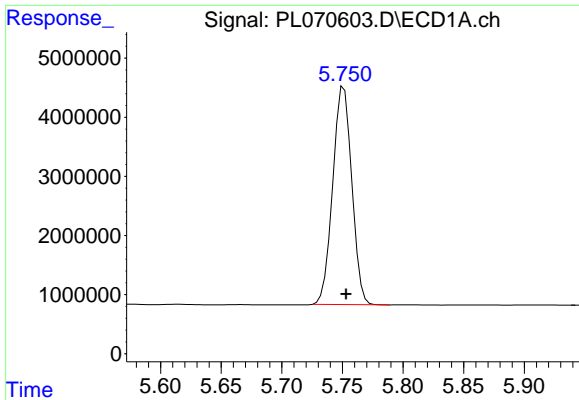
#1 Tetrachloro-m-xylene
 R.T.: 5.560 min
 Delta R.T.: -0.002 min
 Response: 87579678
 Conc: 57.22 ng/ml



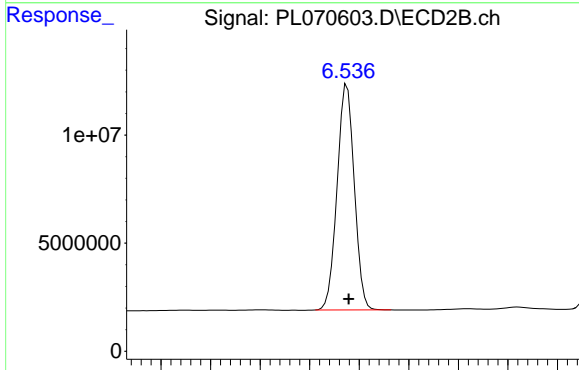
#2 alpha-BHC
 R.T.: 5.328 min
 Delta R.T.: -0.002 min
 Response: 41290752
 Conc: 59.47 ng/ml



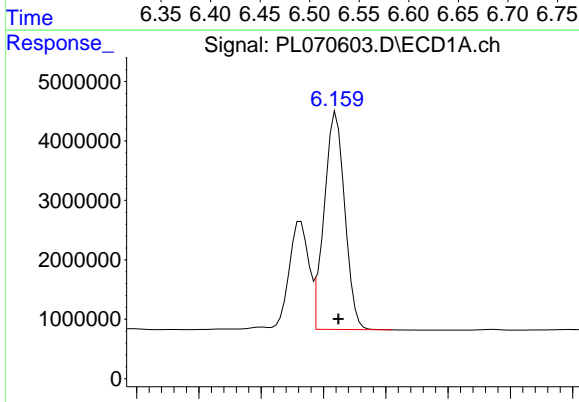
#2 alpha-BHC
 R.T.: 6.141 min
 Delta R.T.: -0.002 min
 Response: 135049223
 Conc: 57.79 ng/ml



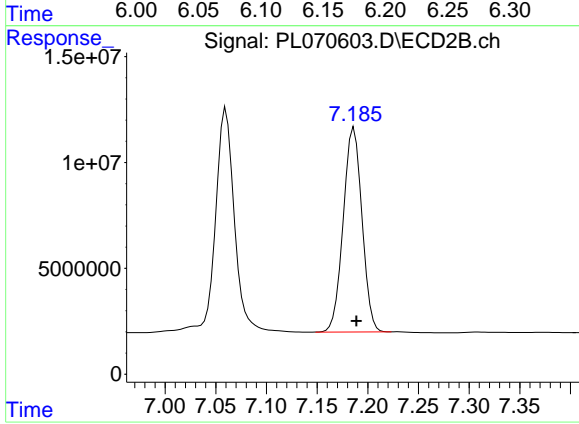
#3 gamma-BHC (Lindane)
R.T.: 5.751 min
Delta R.T.: -0.002 min
Response: 40249258
Conc: 57.36 ng/ml



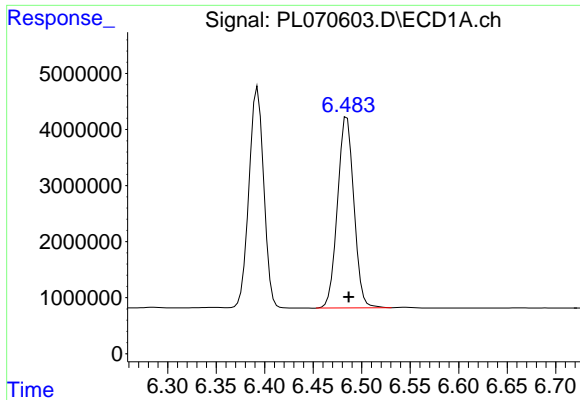
#3 gamma-BHC (Lindane)
R.T.: 6.538 min
Delta R.T.: -0.002 min
Response: 125992559
Conc: 57.66 ng/ml



#4 Heptachlor
R.T.: 6.160 min
Delta R.T.: -0.002 min
Response: 41969489
Conc: 54.64 ng/ml

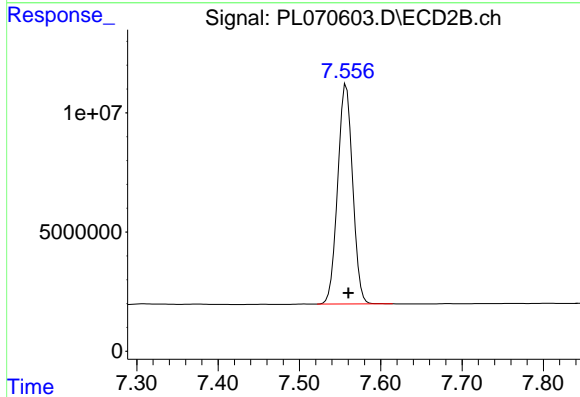


#4 Heptachlor
R.T.: 7.186 min
Delta R.T.: -0.002 min
Response: 123965148
Conc: 53.92 ng/ml



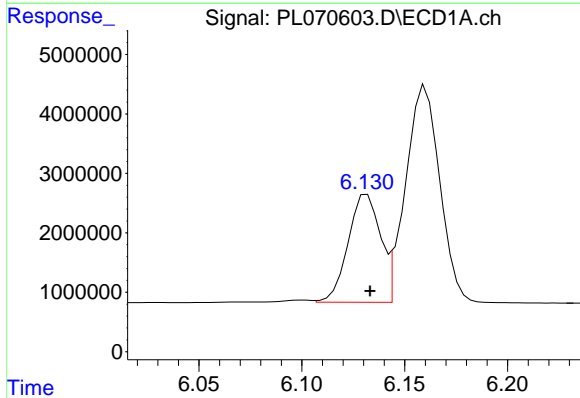
#5 Aldrin

R.T.: 6.485 min
Delta R.T.: -0.002 min
Response: 40022385
Conc: 57.24 ng/ml



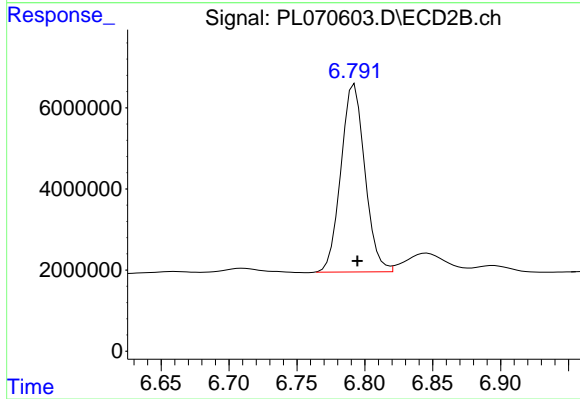
#5 Aldrin

R.T.: 7.558 min
Delta R.T.: -0.002 min
Response: 117763405
Conc: 56.15 ng/ml



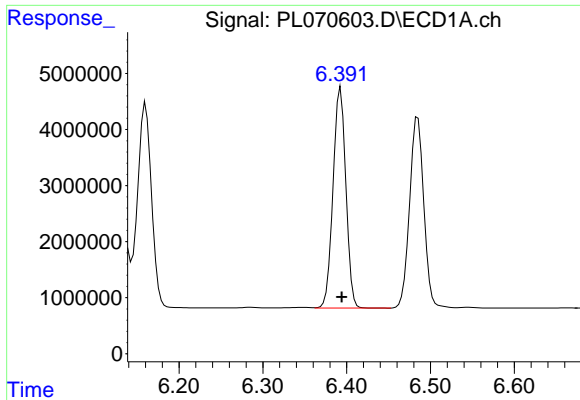
#6 beta-BHC

R.T.: 6.132 min
Delta R.T.: -0.001 min
Response: 19784695
Conc: 56.45 ng/ml



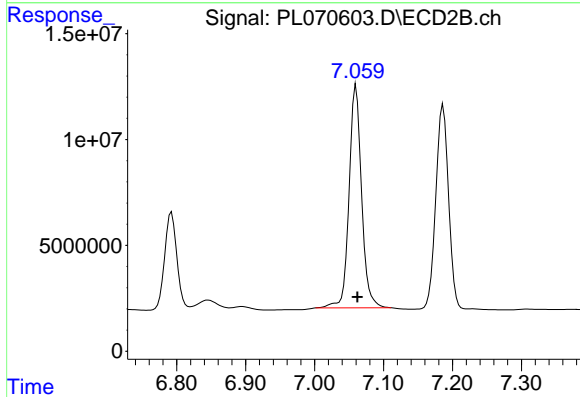
#6 beta-BHC

R.T.: 6.792 min
Delta R.T.: -0.002 min
Response: 56824074
Conc: 53.91 ng/ml



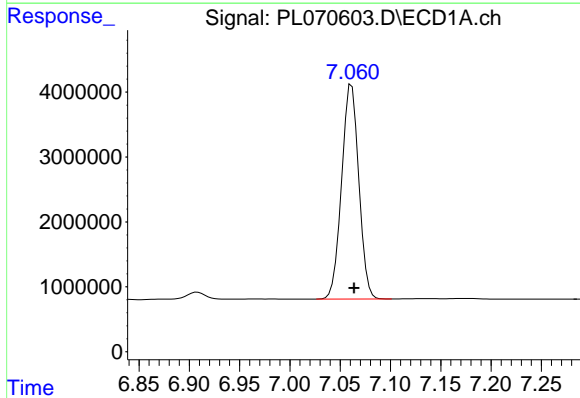
#7 delta-BHC

R.T.: 6.393 min
Delta R.T.: -0.001 min
Response: 41719900
Conc: 58.73 ng/ml



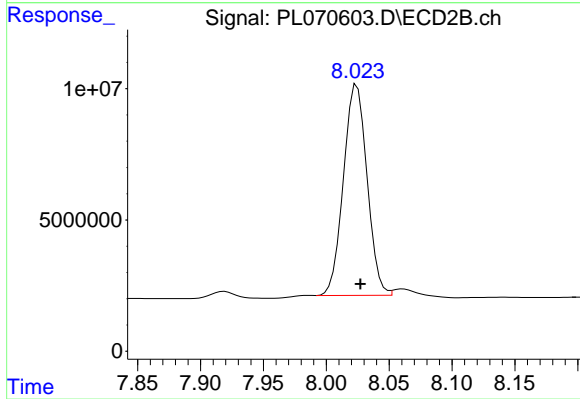
#7 delta-BHC

R.T.: 7.060 min
Delta R.T.: -0.002 min
Response: 132744367
Conc: 52.75 ng/ml



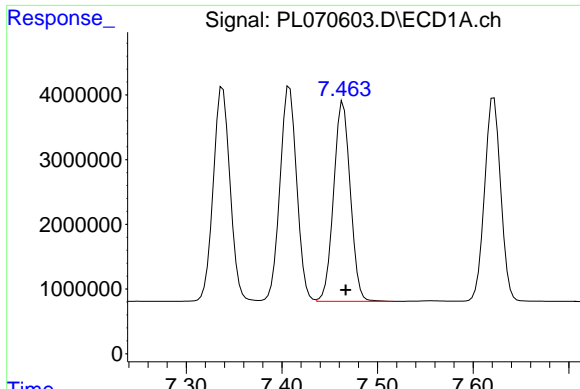
#8 Heptachlor epoxide

R.T.: 7.061 min
Delta R.T.: -0.002 min
Response: 39269991
Conc: 56.11 ng/ml



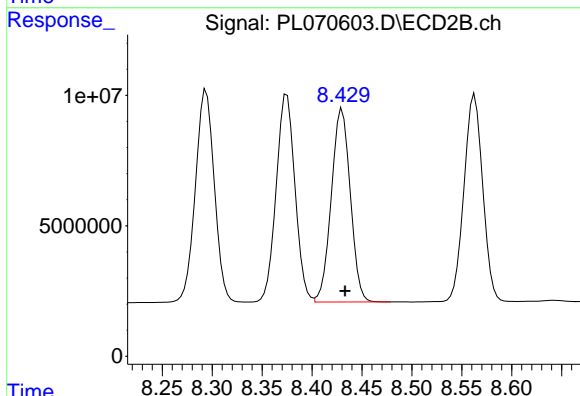
#8 Heptachlor epoxide

R.T.: 8.024 min
Delta R.T.: -0.003 min
Response: 104956334
Conc: 52.86 ng/ml



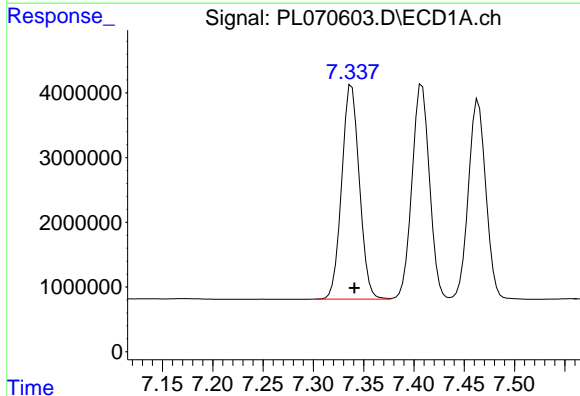
#9 Endosulfan I

R.T.: 7.464 min
 Delta R.T.: -0.003 min
 Response: 37319381
 Conc: 55.42 ng/ml



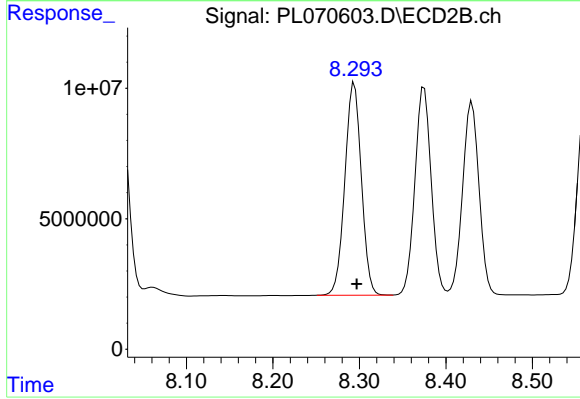
#9 Endosulfan I

R.T.: 8.430 min
 Delta R.T.: -0.003 min
 Response: 97932515
 Conc: 53.12 ng/ml



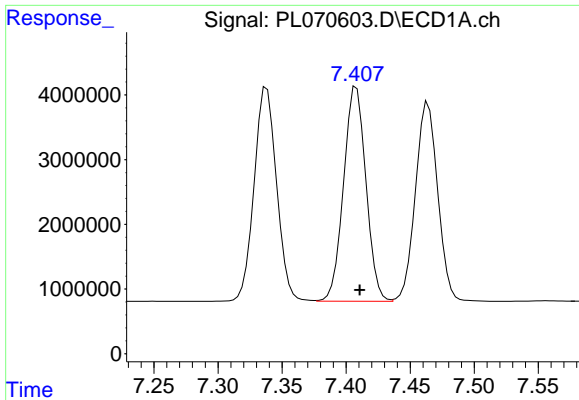
#10 gamma-Chlordane

R.T.: 7.338 min
 Delta R.T.: -0.003 min
 Response: 40366706
 Conc: 56.33 ng/ml



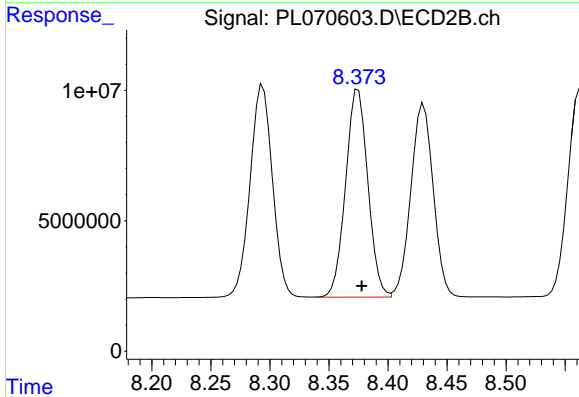
#10 gamma-Chlordane

R.T.: 8.294 min
 Delta R.T.: -0.003 min
 Response: 107407634
 Conc: 53.80 ng/ml



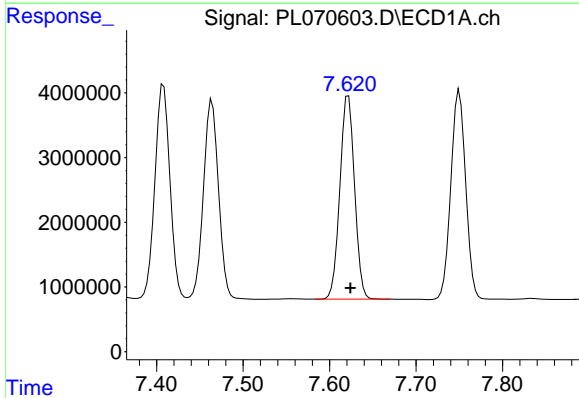
#11 alpha-Chlordane

R.T.: 7.408 min
Delta R.T.: -0.003 min
Response: 40276930
Conc: 55.37 ng/ml



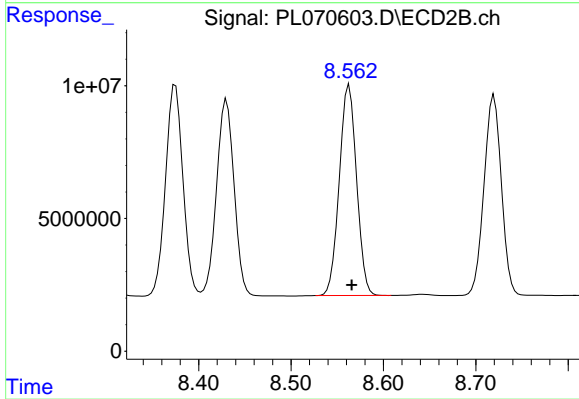
#11 alpha-Chlordane

R.T.: 8.375 min
Delta R.T.: -0.003 min
Response: 104512878
Conc: 53.38 ng/ml



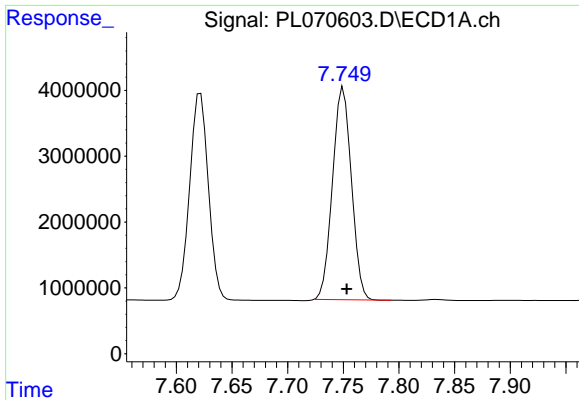
#12 4,4'-DDE

R.T.: 7.622 min
Delta R.T.: -0.002 min
Response: 36792158
Conc: 56.76 ng/ml

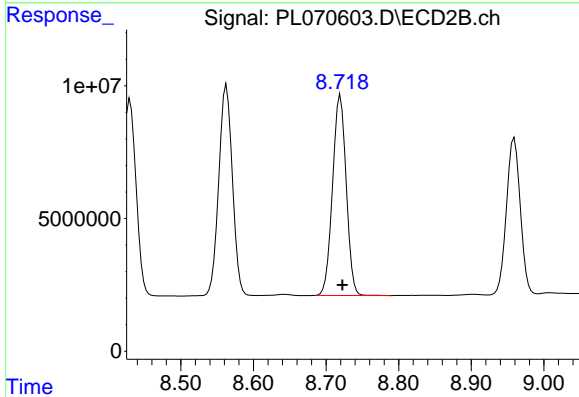


#12 4,4'-DDE

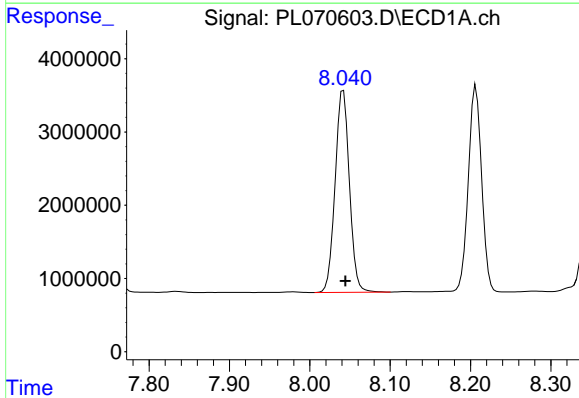
R.T.: 8.563 min
Delta R.T.: -0.003 min
Response: 103403489
Conc: 52.59 ng/ml



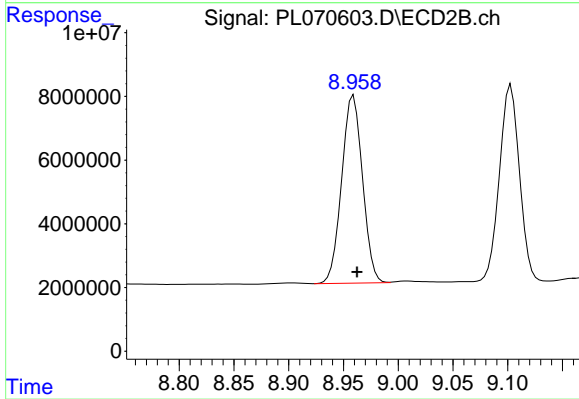
#13 Dieldrin
 R.T.: 7.750 min
 Delta R.T.: -0.003 min
 Response: 38093681
 Conc: 54.20 ng/ml



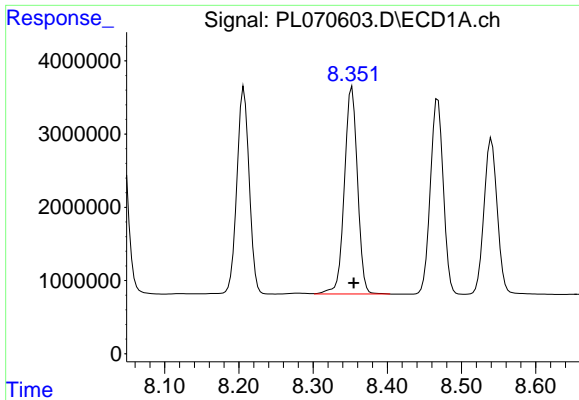
#13 Dieldrin
 R.T.: 8.720 min
 Delta R.T.: -0.003 min
 Response: 98658911
 Conc: 51.62 ng/ml



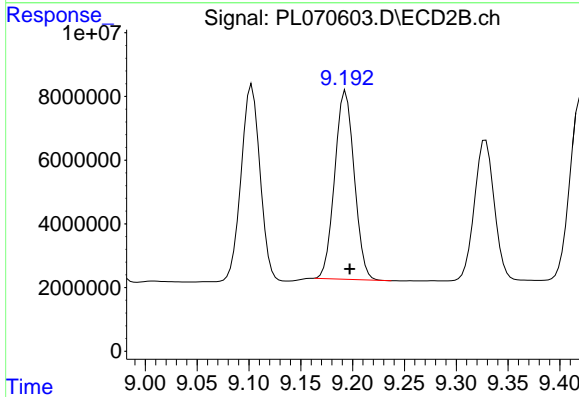
#14 Endrin
 R.T.: 8.042 min
 Delta R.T.: -0.003 min
 Response: 34073557
 Conc: 52.67 ng/ml



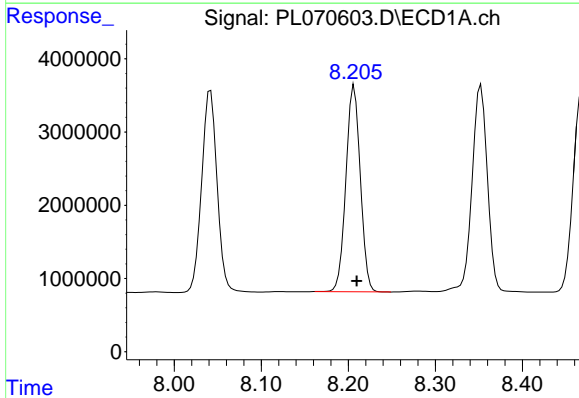
#14 Endrin
 R.T.: 8.959 min
 Delta R.T.: -0.003 min
 Response: 78050720
 Conc: 48.06 ng/ml



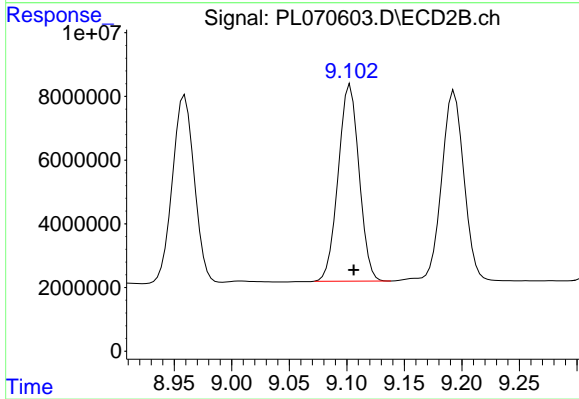
#15 Endosulfan II
 R.T.: 8.353 min
 Delta R.T.: -0.002 min
 Response: 34682231
 Conc: 54.43 ng/ml



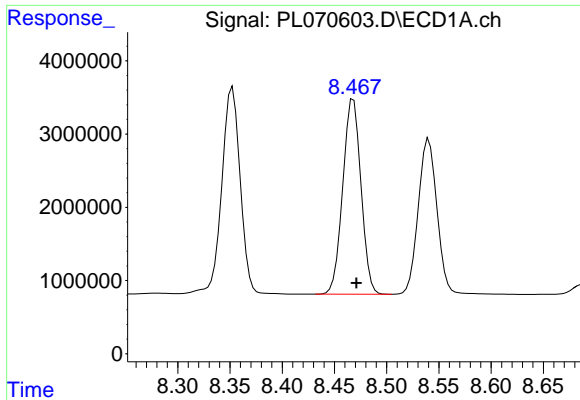
#15 Endosulfan II
 R.T.: 9.193 min
 Delta R.T.: -0.004 min
 Response: 77536146
 Conc: 50.38 ng/ml



#16 4,4'-DDD
 R.T.: 8.207 min
 Delta R.T.: -0.003 min
 Response: 32357642
 Conc: 56.87 ng/ml

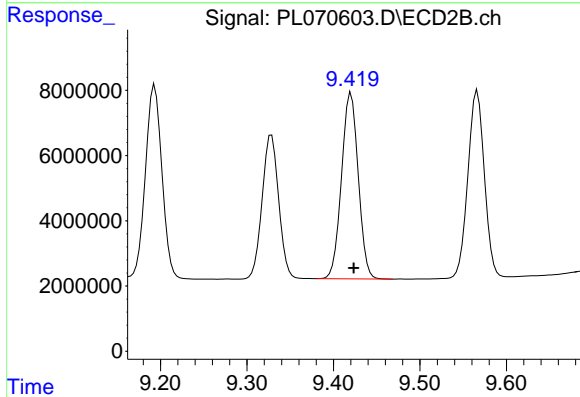


#16 4,4'-DDD
 R.T.: 9.103 min
 Delta R.T.: -0.003 min
 Response: 78239991
 Conc: 51.15 ng/ml



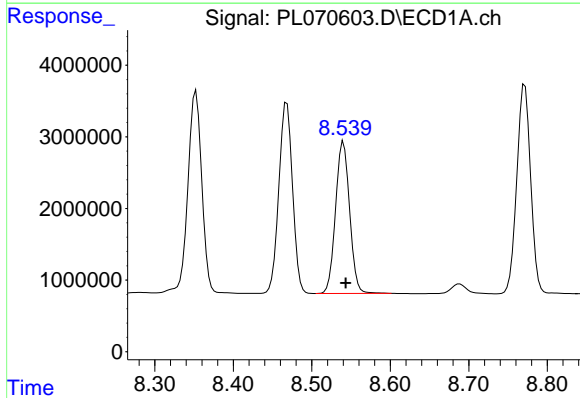
#17 4,4'-DDT

R.T.: 8.468 min
 Delta R.T.: -0.003 min
 Response: 32276567
 Conc: 50.54 ng/ml



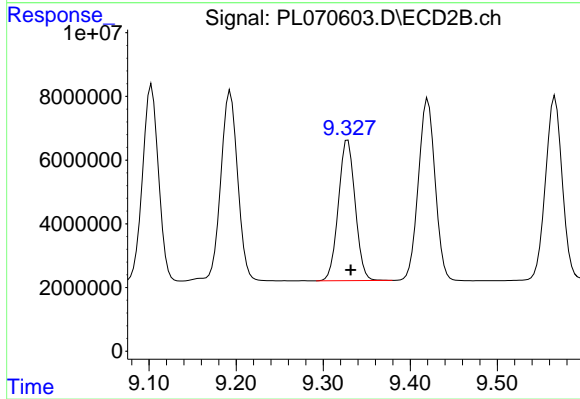
#17 4,4'-DDT

R.T.: 9.420 min
 Delta R.T.: -0.003 min
 Response: 76253749
 Conc: 44.13 ng/ml



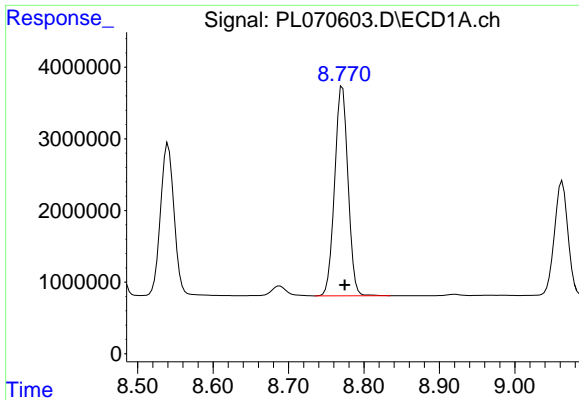
#18 Endrin aldehyde

R.T.: 8.540 min
 Delta R.T.: -0.003 min
 Response: 26432820
 Conc: 51.80 ng/ml

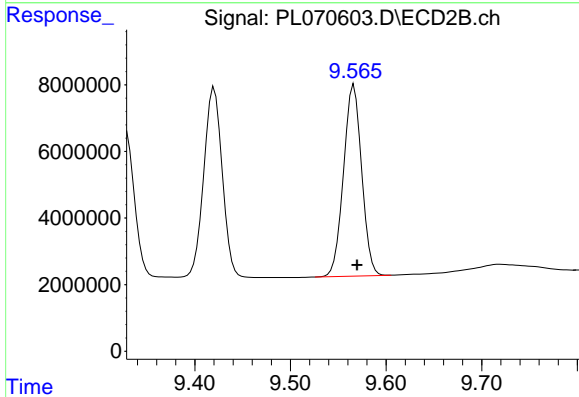


#18 Endrin aldehyde

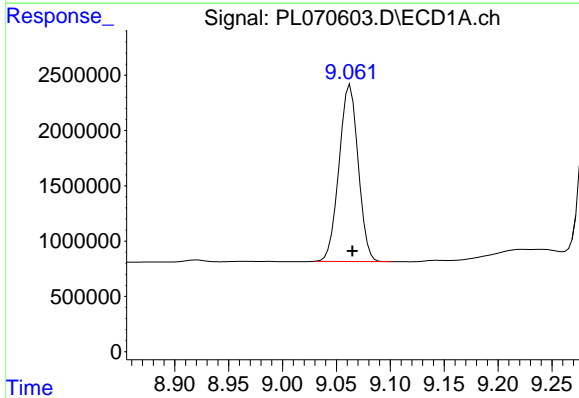
R.T.: 9.328 min
 Delta R.T.: -0.003 min
 Response: 59021260
 Conc: 47.21 ng/ml



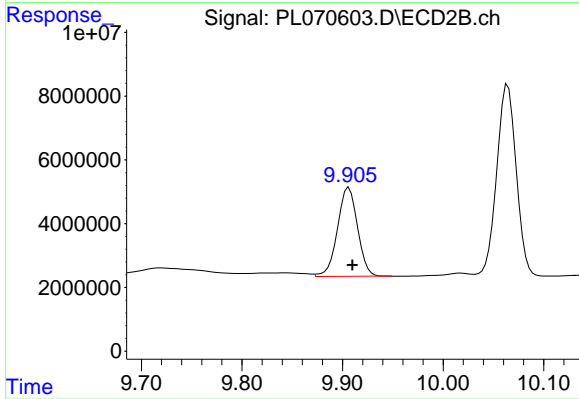
#19 Endosulfan Sulfate
 R.T.: 8.771 min
 Delta R.T.: -0.003 min
 Response: 36007875
 Conc: 52.76 ng/ml



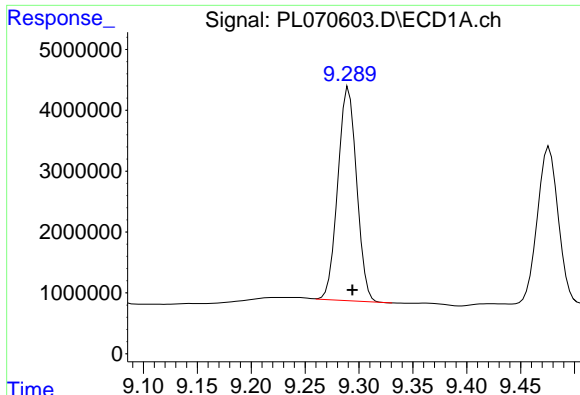
#19 Endosulfan Sulfate
 R.T.: 9.566 min
 Delta R.T.: -0.003 min
 Response: 75962378
 Conc: 49.01 ng/ml



#20 Methoxychlor
 R.T.: 9.063 min
 Delta R.T.: -0.002 min
 Response: 19732099
 Conc: 48.68 ng/ml

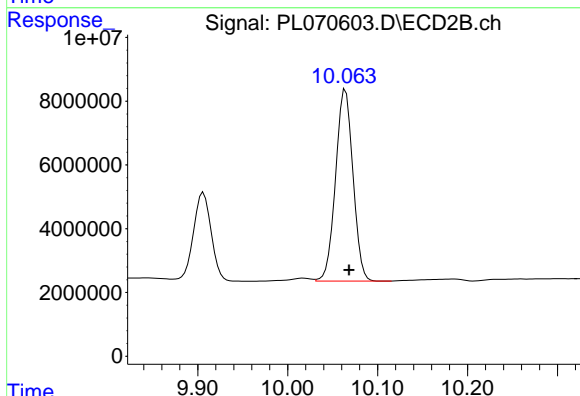


#20 Methoxychlor
 R.T.: 9.906 min
 Delta R.T.: -0.004 min
 Response: 38677137
 Conc: 39.20 ng/ml



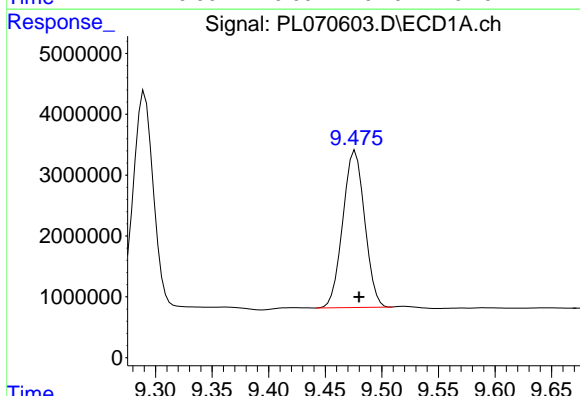
#21 Endrin ketone

R.T.: 9.290 min
 Delta R.T.: -0.004 min
 Response: 42589036
 Conc: 51.58 ng/ml



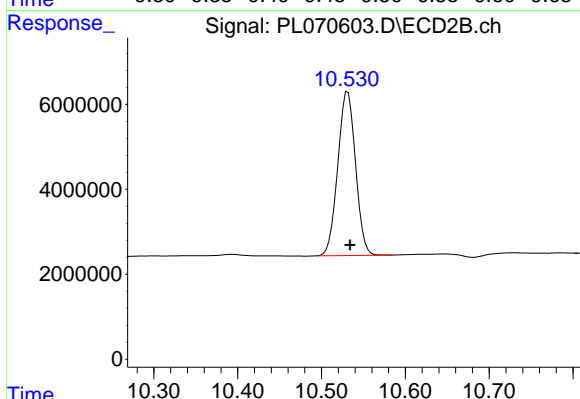
#21 Endrin ketone

R.T.: 10.064 min
 Delta R.T.: -0.004 min
 Response: 80863109
 Conc: 46.67 ng/ml



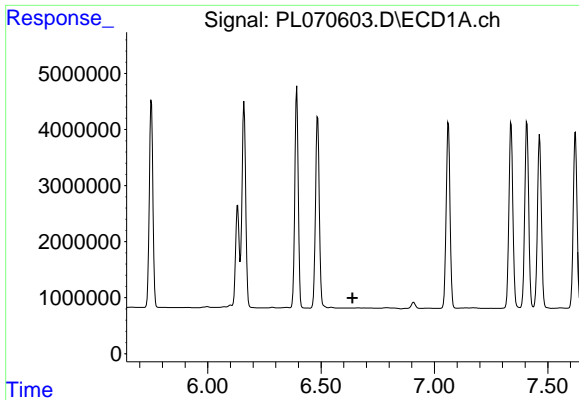
#22 Mirex

R.T.: 9.477 min
 Delta R.T.: -0.003 min
 Response: 34658574
 Conc: 50.78 ng/ml



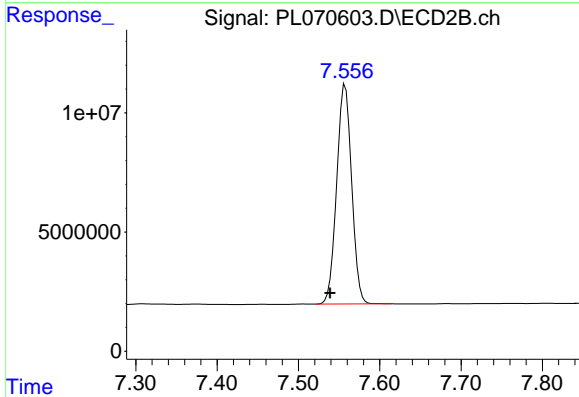
#22 Mirex

R.T.: 10.531 min
 Delta R.T.: -0.003 min
 Response: 56875155
 Conc: 47.50 ng/ml



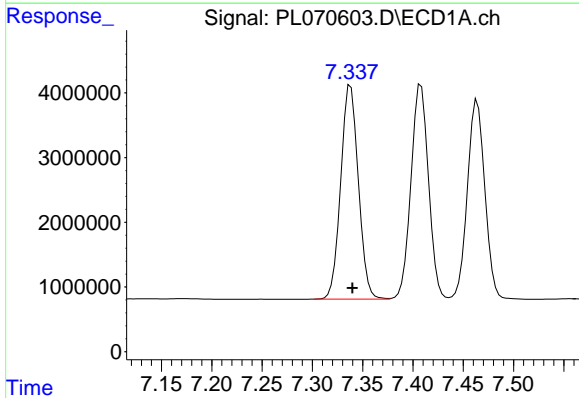
#24 Chlordane-2

R.T.: 0.000 min
Exp R.T. : 6.639 min
Response: 0
Conc: N.D.



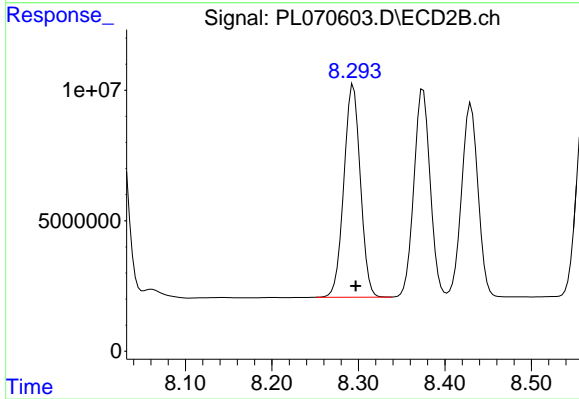
#24 Chlordane-2

R.T.: 7.558 min
Delta R.T.: 0.019 min
Response: 117763405
Conc: 1750.99 ng/ml



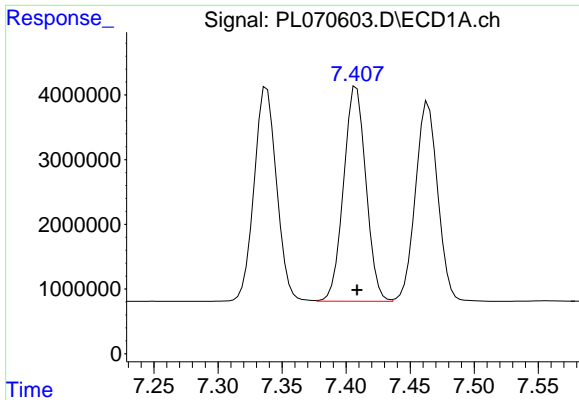
#25 Chlordane-3

R.T.: 7.338 min
Delta R.T.: -0.002 min
Response: 40366706
Conc: 599.03 ng/ml



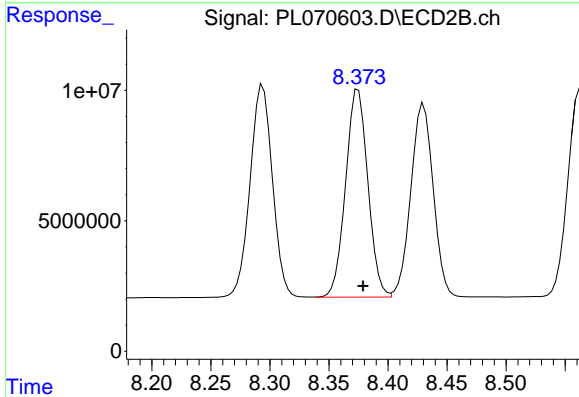
#25 Chlordane-3

R.T.: 8.294 min
Delta R.T.: -0.003 min
Response: 107407634
Conc: 401.86 ng/ml



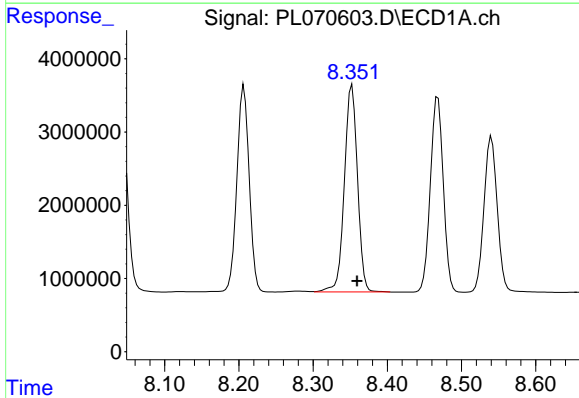
#26 Chlordane-4

R.T.: 7.408 min
 Delta R.T.: 0.000 min
 Response: 40276930
 Conc: 560.90 ng/ml



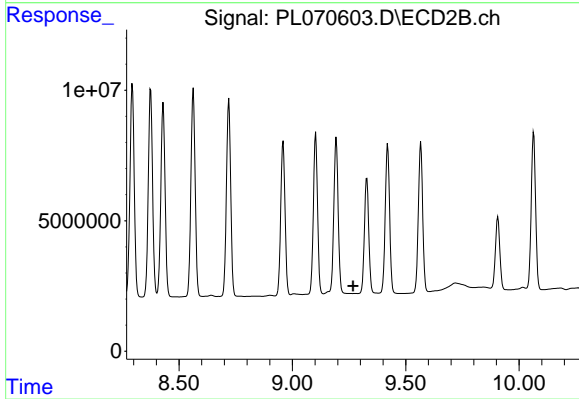
#26 Chlordane-4

R.T.: 8.375 min
 Delta R.T.: -0.004 min
 Response: 104512878
 Conc: 329.66 ng/ml



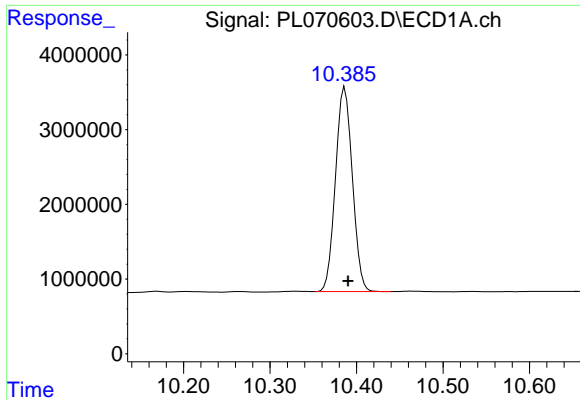
#27 Chlordane-5

R.T.: 8.353 min
 Delta R.T.: -0.007 min
 Response: 34682231
 Conc: 1338.25 ng/ml



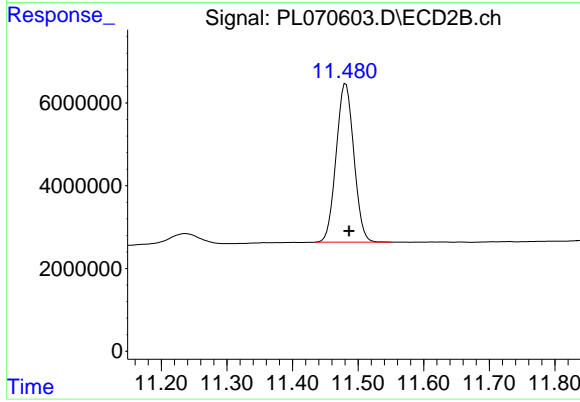
#27 Chlordane-5

R.T.: 0.000 min
 Exp R.T.: 9.267 min
 Response: 0
 Conc: N.D.



#28 Decachlorobiphenyl

R.T.: 10.387 min
Delta R.T.: -0.004 min
Response: 36894524
Conc: 48.80 ng/ml



#28 Decachlorobiphenyl

R.T.: 11.481 min
Delta R.T.: -0.005 min
Response: 71799346
Conc: 49.77 ng/ml