

Data Path : Z:\pestpcbsrv\HPCHEM1\ECD_L\Data\PL102623\
 Data File : PL086168.D
 Signal(s) : Signal #1: ECD1A.ch Signal #2: ECD2B.ch
 Acq On : 26 Oct 2023 15:29
 Operator : AR\AJ
 Sample : TOXAPH201
 Misc :
 ALS Vial : 5 Sample Multiplier: 1

Instrument :
 ECD_L
 ClientSampleId :

Integration File signal 1: autoint1.e
 Integration File signal 2: autoint2.e
 Quant Time: Oct 26 16:42:15 2023
 Quant Method : Z:\pestpcbsrv\HPCHEM1\ECD_L\methods\PL102623CLP.M
 Quant Title : GC Extractables
 QLast Update : Thu Oct 26 16:36:18 2023
 Response via : Initial Calibration
 Integrator: ChemStation

Volume Inj. : 1 µl
 Signal #1 Phase : ZB-MR2 Signal #2 Phase: ZB-MR1
 Signal #1 Info : 30M x 0.32mm x0.2 Signal #2 Info : 30M x 0.32mm x 0.50µm

Compound	RT#1	RT#2	Resp#1	Resp#2	ng/ml	ng/ml

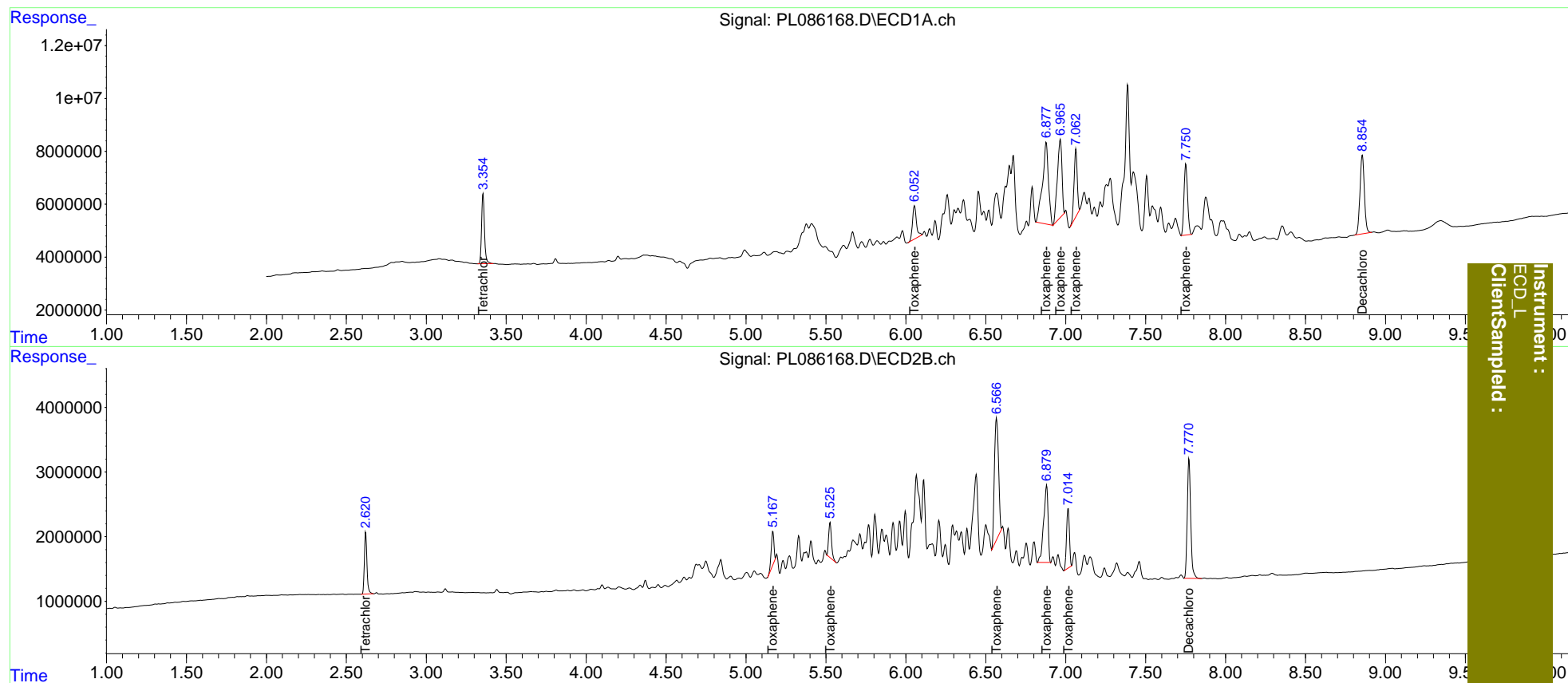
System Monitoring Compounds						
1) SA Tetrachlo...	3.356	2.622	33453119	10572732	9.761	9.655
27) SA Decachlor...	8.855	7.771	57019091	28127833	20.187	20.089
Target Compounds						
22) Toxaphene-1	6.054	5.168	21350785	5828444	966.845	1017.945
23) Toxaphene-2	6.878	5.526	80385670	6760964	911.318	939.823
24) Toxaphene-3	6.966	6.567	58030000	33389564	908.922	879.720
25) Toxaphene-4	7.064	6.881	35334737	22873645	921.184	904.210
26) Toxaphene-5	7.751	7.015	41264819	11600244	909.010	843.290

(f)=RT Delta > 1/2 Window (#)=Amounts differ by > 25% (m)=manual int.

Data Path : Z:\pestpcbsrv\HPCHEM1\ECD_L\Data\PL102623\
 Data File : PL086168.D
 Signal(s) : Signal #1: ECD1A.ch Signal #2: ECD2B.ch
 Acq On : 26 Oct 2023 15:29
 Operator : AR\AJ
 Sample : TOXAPH201
 Misc :
 ALS Vial : 5 Sample Multiplier: 1

Integration File signal 1: autoint1.e
 Integration File signal 2: autoint2.e
 Quant Time: Oct 26 16:42:15 2023
 Quant Method : Z:\pestpcbsrv\HPCHEM1\ECD_L\methods\PL102623CLP.M
 Quant Title : GC Extractables
 QLast Update : Thu Oct 26 16:36:18 2023
 Response via : Initial Calibration
 Integrator: ChemStation

Volume Inj. : 1 µl
 Signal #1 Phase : ZB-MR2 Signal #2 Phase: ZB-MR1
 Signal #1 Info : 30M x 0.32mm x0.2 Signal #2 Info : 30M x 0.32mm x 0.50µm



Instrument : ECD_L
 ClientSampled :