

Data Path : Z:\pestpcbsrv\HPCHEM1\ECD_L\Data\PL102623\
 Data File : PL086165.D
 Signal(s) : Signal #1: ECD1A.ch Signal #2: ECD2B.ch
 Acq On : 26 Oct 2023 14:48
 Operator : AR\AJ
 Sample : RESC201
 Misc :
 ALS Vial : 2 Sample Multiplier: 1

Instrument :
 ECD_L
 ClientSampleId :
 RESC214

Integration File signal 1: autoint1.e
 Integration File signal 2: autoint2.e
 Quant Time: Oct 27 08:28:26 2023
 Quant Method : Z:\pestpcbsrv\HPCHEM1\ECD_L\methods\PL102623CLP.M
 Quant Title : GC Extractables
 QLast Update : Fri Oct 27 01:35:51 2023
 Response via : Initial Calibration
 Integrator: ChemStation

Volume Inj. : 1 µl
 Signal #1 Phase : ZB-MR2 Signal #2 Phase: ZB-MR1
 Signal #1 Info : 30M x 0.32mm x0.2 Signal #2 Info : 30M x 0.32mm x 0.50µm

Compound	RT#1	RT#2	Resp#1	Resp#2	ng/ml	ng/ml

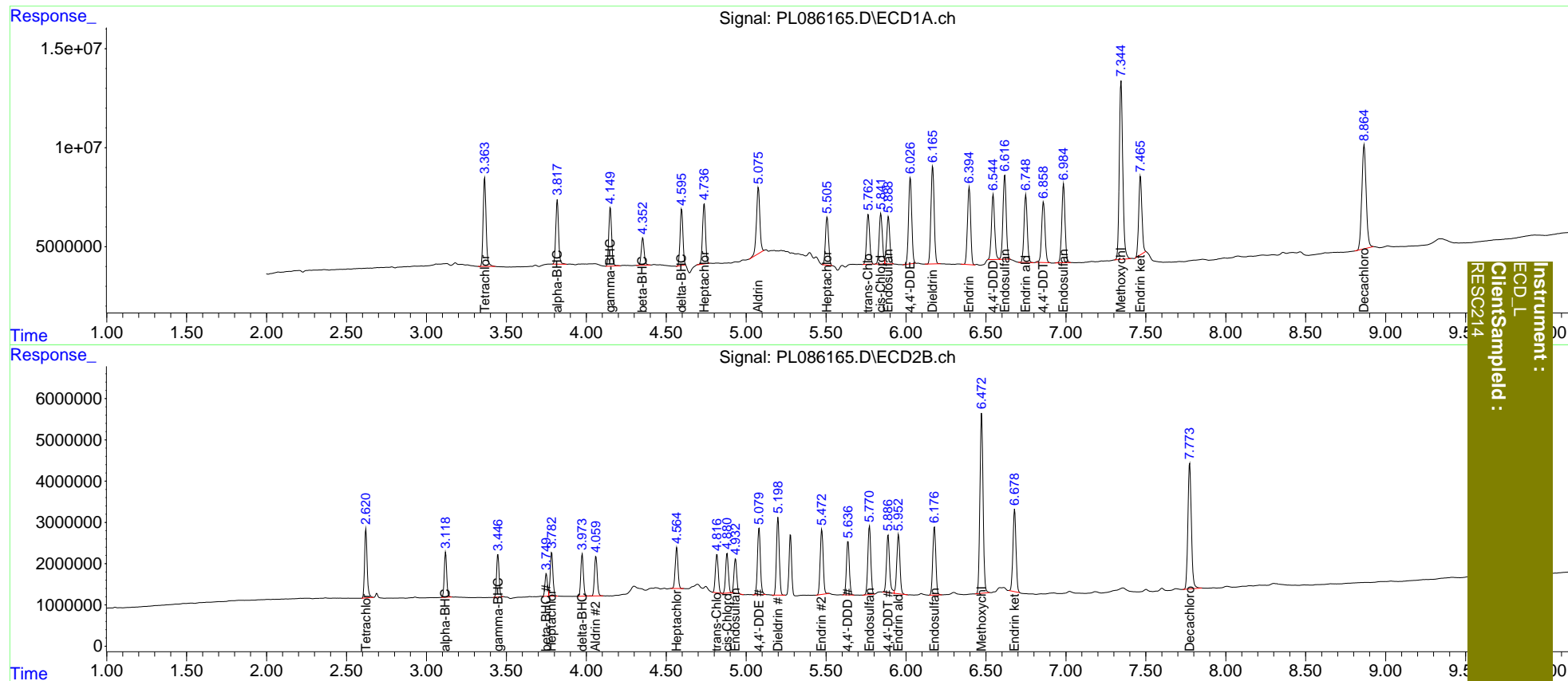
System Monitoring Compounds						
1) SA Tetrachlo...	3.364	2.622	56919420	18392303	19.971	20.278
27) SA Decachlor...	8.866	7.774	100.1E6	46593990	40.179	40.590
Target Compounds						
2) A alpha-BHC	3.819	3.120	39749148	11551459	9.476	9.190
3) MA gamma-BHC...	4.150	3.447	36381308	11272568	9.057	9.397
4) MA Heptachlor	4.738	3.784	39801584	12646924	10.030	9.968
5) MB Aldrin	5.076	4.060	49699380	11517185	12.513	9.537
6) B beta-BHC	4.353	3.750	17511535	5944895	9.455	9.701
7) B delta-BHC	4.596	3.975	34650765	11301785	9.314	9.060
8) B Heptachlo...	5.507	4.566	32070738	11923366	9.458	10.224
9) A Endosulfan I	5.890	4.934	33484274	9925765	10.422	9.245
10) B trans-Chl...	5.764	4.817	34489762	11430536	9.863	9.982
11) B cis-Chlor...	5.843	4.881	35883925	11456880	10.208	9.708
12) B 4,4'-DDE	6.027	5.081	59565899	20580024	18.977	18.791
13) MA Dieldrin	6.167	5.199	68183603	22753398	19.403	18.763
14) MA Endrin	6.395	5.473	53621021	20301587	18.283	19.708
15) B Endosulfa...	6.618	5.772	60271152	21138518	19.257	19.415
16) A 4,4'-DDD	6.545	5.637	46044106	16312842	19.407	18.637
17) MA 4,4'-DDT	6.860	5.888	45629400	18979700	19.063	21.087
18) B Endrin al...	6.749	5.953	47893629	19374369	20.574	20.458
19) B Endosulfa...	6.985	6.178	57188978	21776195	20.109	19.867
20) A Methoxychlor	7.345	6.473	136.1E6	58820084	107.932	102.540
21) B Endrin ke...	7.466	6.679	56582106	26930944	19.639	21.856

(f)=RT Delta > 1/2 Window (#)=Amounts differ by > 25% (m)=manual int.

Data Path : Z:\pestpcbsrv\HPCHEM1\ECD_L\Data\PL102623\
 Data File : PL086165.D
 Signal(s) : Signal #1: ECD1A.ch Signal #2: ECD2B.ch
 Acq On : 26 Oct 2023 14:48
 Operator : AR\AJ
 Sample : RESC201
 Misc :
 ALS Vial : 2 Sample Multiplier: 1

Integration File signal 1: autoint1.e
 Integration File signal 2: autoint2.e
 Quant Time: Oct 27 08:28:26 2023
 Quant Method : Z:\pestpcbsrv\HPCHEM1\ECD_L\methods\PL102623CLP.M
 Quant Title : GC Extractables
 QLast Update : Fri Oct 27 01:35:51 2023
 Response via : Initial Calibration
 Integrator: ChemStation

Volume Inj. : 1 µl
 Signal #1 Phase : ZB-MR2 Signal #2 Phase: ZB-MR1
 Signal #1 Info : 30M x 0.32mm x0.2 Signal #2 Info : 30M x 0.32mm x 0.50µm



Data Path : Z:\pestpcbsrv\HPCHEM1\ECD_L\Data\PL102623\
Data File : PL086165.D
Acq On : 26 Oct 2023 14:48
Operator : AR\AJ
Sample : RESC201
Misc :
ALS Vial : 2 Sample Multiplier: 1

Instrument :
ECD_L
ClientSampleId :
RESC214

Integration File signal 1: autoint1.e
Integration File signal 2: autoint2.e

Method : Z:\pestpcbsrv\HPCHEM1\ECD_L\methods\PL102623CLP.M
Title : GC Extractables
Last Update : Fri Oct 27 01:35:51 2023
Integrator: ChemStation

RT#1	RT#2	Resolution
3.364	3.819	100.00%
3.819	4.150	100.00%
4.150	4.353	100.00%
4.353	4.596	100.00%
4.596	4.738	100.00%
4.738	5.076	100.00%
5.076	5.507	100.00%
5.507	5.764	100.00%
5.764	5.843	100.00%
5.843	5.890	90.44%
5.890	6.027	100.00%
6.027	6.167	100.00%
6.167	6.395	100.00%
6.395	6.545	100.00%
6.545	6.618	99.30%
6.618	6.749	100.00%
6.749	6.860	100.00%
6.860	6.985	100.00%
6.985	7.345	100.00%
7.345	7.466	100.00%
7.466	8.866	100.00%

Signal #2

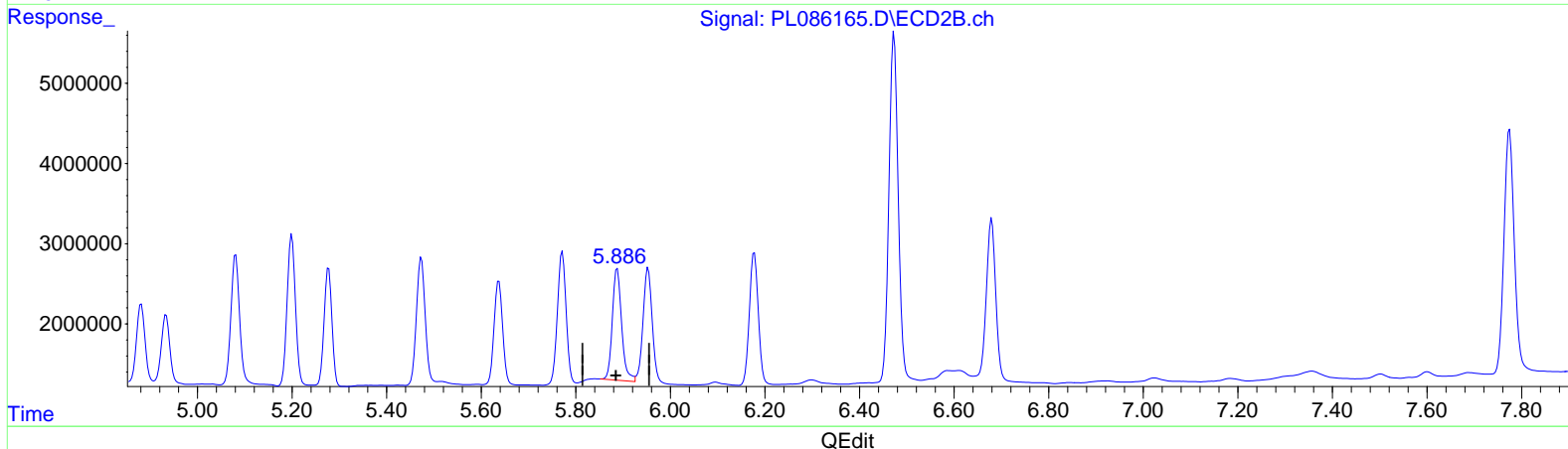
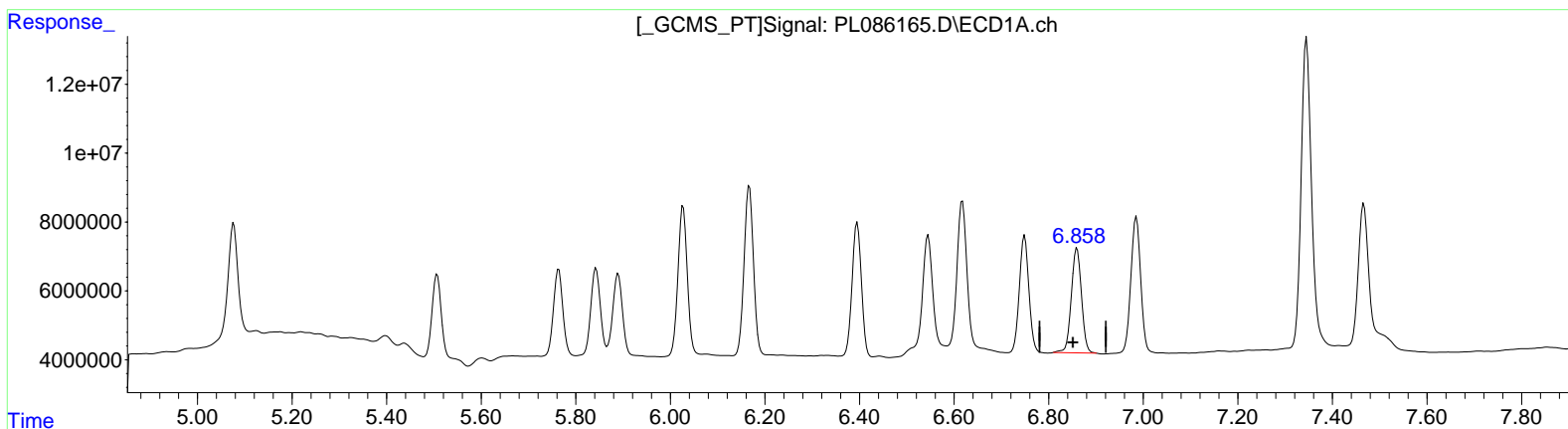
2.622	3.120	100.00%
3.120	3.447	100.00%
3.447	3.750	100.00%
3.750	3.784	77.50%
3.784	3.975	100.00%
3.975	4.060	100.00%
4.060	4.566	100.00%
4.566	4.817	100.00%
4.817	4.881	100.00%
4.881	4.934	99.31%
4.934	5.081	100.00%
5.081	5.199	100.00%
5.199	5.277	100.00%
5.277	5.473	100.00%
5.473	5.637	100.00%
5.637	5.772	100.00%
5.772	5.888	100.00%
5.888	5.953	96.81%
5.953	6.178	100.00%
6.178	6.473	100.00%
6.473	6.679	100.00%
6.679	7.774	100.00%

Data Path : Z:\pestpcbsrv\HPCHEM1\ECD_L\Data\PL102623\
 Data File : PL086165.D
 Signal(s) : Signal #1: ECD1A.ch Signal #2: ECD2B.ch
 Acq On : 26 Oct 2023 14:48
 Operator : AR\AJ
 Sample : RESC201
 Misc :
 ALS Vial : 2 Sample Multiplier: 1

Instrument :
 ECD_L
 ClientSampleId :
 RESC214

Integration File signal 1: autoint1.e
 Integration File signal 2: autoint2.e
 Quant Time: Oct 27 08:28:26 2023
 Quant Method : Z:\pestpcbsrv\HPCHEM1\ECD_L\methods\PL102623CLP.M
 Quant Title : GC Extractables
 QLast Update : Fri Oct 27 01:35:51 2023
 Response via : Initial Calibration
 Integrator: ChemStation

Volume Inj. : 1 µl
 Signal #1 Phase : ZB-MR2 Signal #2 Phase: ZB-MR1
 Signal #1 Info : 30M x 0.32mm x 0.2 Signal #2 Info : 30M x 0.32mm x 0.50µm



(17) 4,4'-DDT (MA)
 6.860min 19.063 ng/ml
 response 45629400

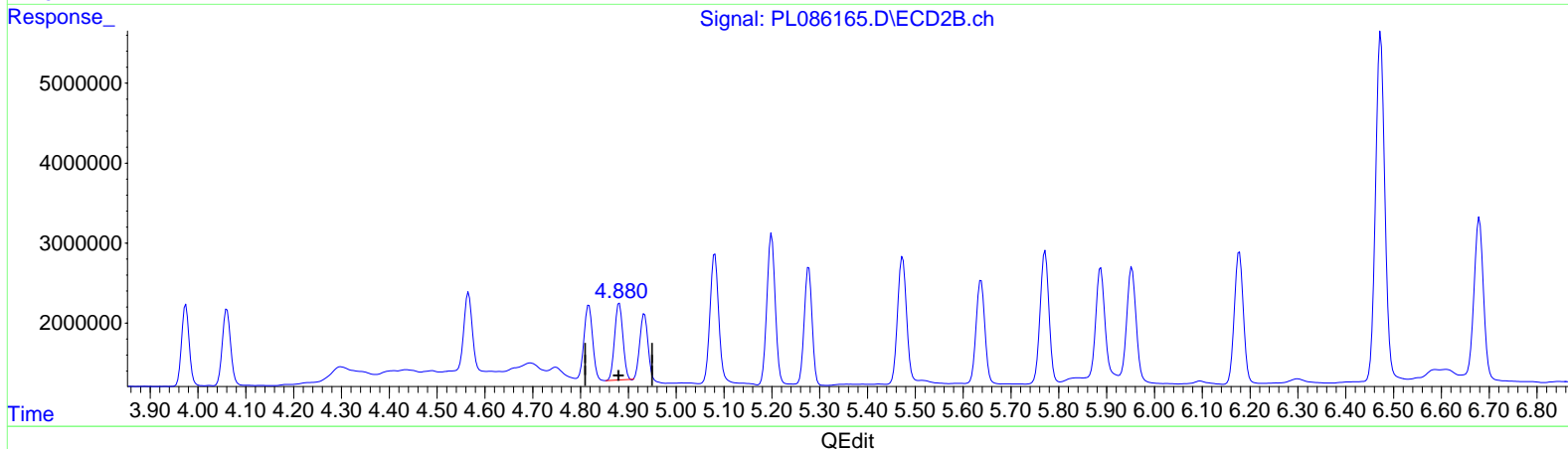
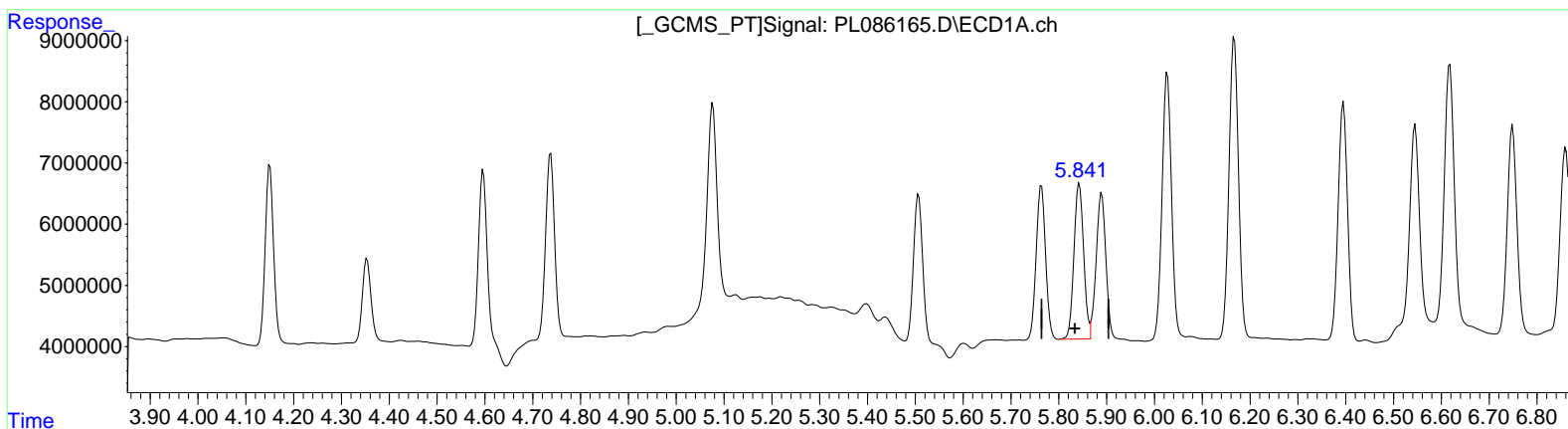
(17) 4,4'-DDT #2 (MA)
 5.888min 21.087 ng/ml
 response 18979700

Data Path : Z:\pestpcbsrv\HPCHEM1\ECD_L\Data\PL102623\
 Data File : PL086165.D
 Signal(s) : Signal #1: ECD1A.ch Signal #2: ECD2B.ch
 Acq On : 26 Oct 2023 14:48
 Operator : AR\AJ
 Sample : RESC201
 Misc :
 ALS Vial : 2 Sample Multiplier: 1

Instrument :
 ECD_L
 ClientSampleId :
 RESC214

Integration File signal 1: autoint1.e
 Integration File signal 2: autoint2.e
 Quant Time: Oct 27 08:28:26 2023
 Quant Method : Z:\pestpcbsrv\HPCHEM1\ECD_L\methods\PL102623CLP.M
 Quant Title : GC Extractables
 QLast Update : Fri Oct 27 01:35:51 2023
 Response via : Initial Calibration
 Integrator: ChemStation

Volume Inj. : 1 µl
 Signal #1 Phase : ZB-MR2 Signal #2 Phase: ZB-MR1
 Signal #1 Info : 30M x 0.32mm x 0.2 Signal #2 Info : 30M x 0.32mm x 0.50µm



(11) cis-Chlordane (B)

5.843min 10.208 ng/ml

response 35883925

(11) cis-Chlordane #2 (B)

4.881min 9.708 ng/ml

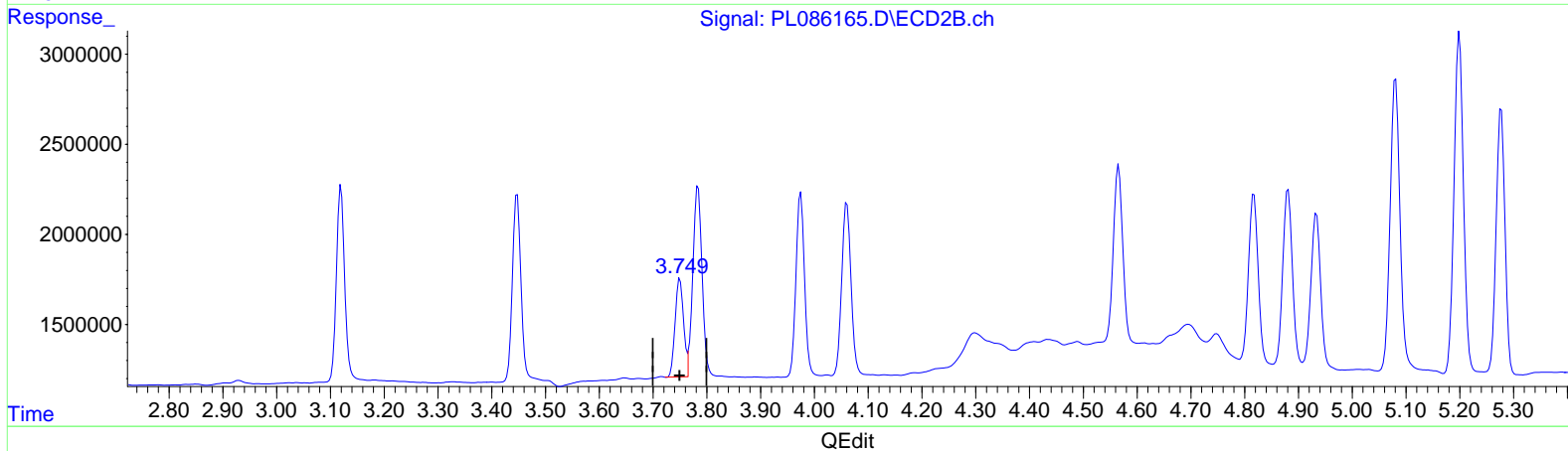
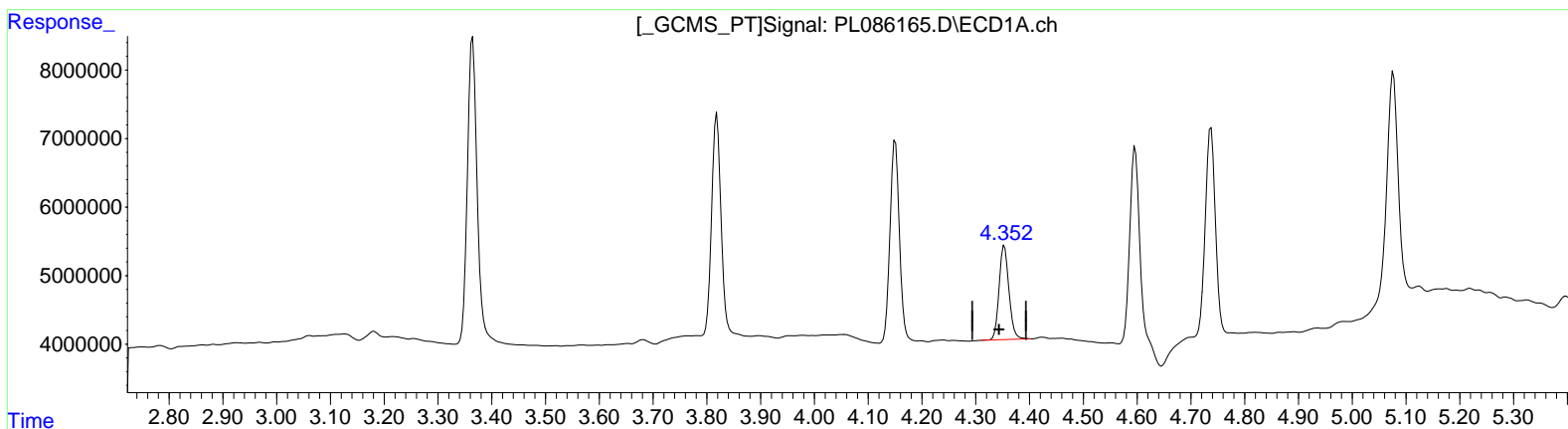
response 11456880

Data Path : Z:\pestpcbsrv\HPCHEM1\ECD_L\Data\PL102623\
 Data File : PL086165.D
 Signal(s) : Signal #1: ECD1A.ch Signal #2: ECD2B.ch
 Acq On : 26 Oct 2023 14:48
 Operator : AR\AJ
 Sample : RESC201
 Misc :
 ALS Vial : 2 Sample Multiplier: 1

Instrument :
 ECD_L
 ClientSampleId :
 RESC214

Integration File signal 1: autoint1.e
 Integration File signal 2: autoint2.e
 Quant Time: Oct 27 08:28:26 2023
 Quant Method : Z:\pestpcbsrv\HPCHEM1\ECD_L\methods\PL102623CLP.M
 Quant Title : GC Extractables
 QLast Update : Fri Oct 27 01:35:51 2023
 Response via : Initial Calibration
 Integrator: ChemStation

Volume Inj. : 1 µl
 Signal #1 Phase : ZB-MR2 Signal #2 Phase: ZB-MR1
 Signal #1 Info : 30M x 0.32mm x 0.2 Signal #2 Info : 30M x 0.32mm x 0.50µm



(6) beta-BHC (B)
 4.353min 9.455 ng/ml
 response 17511535

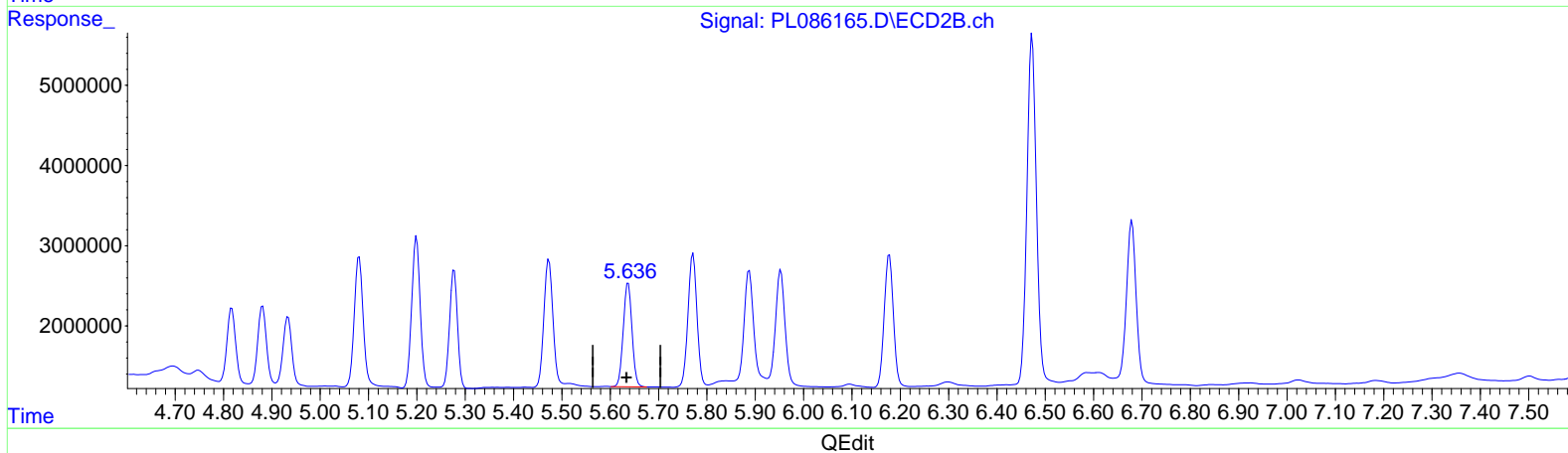
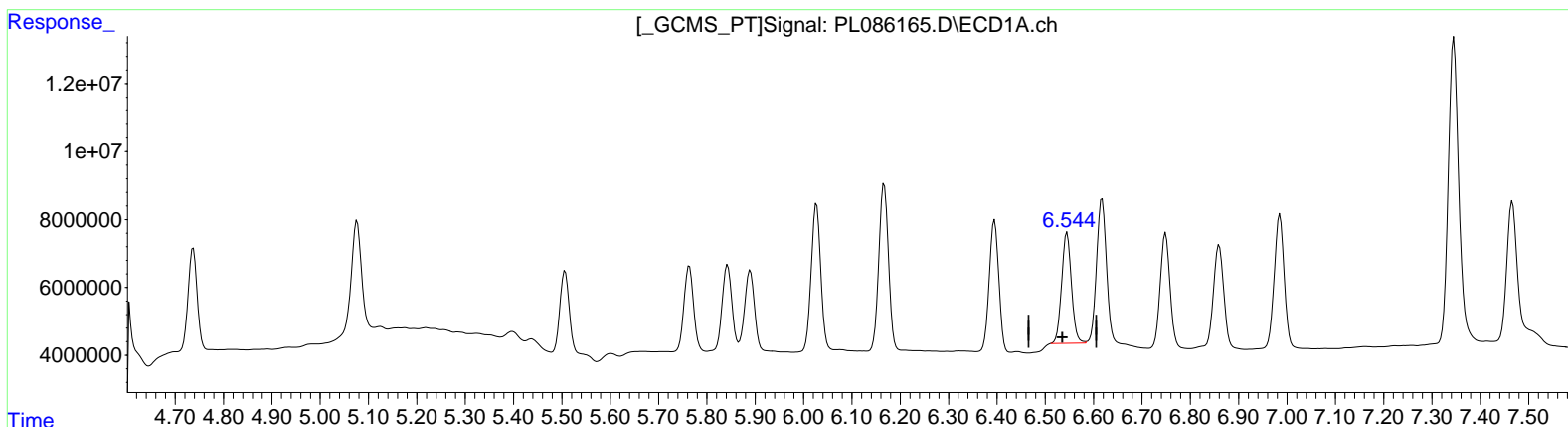
(6) beta-BHC #2 (B)
 3.750min 9.701 ng/ml
 response 5944895

Data Path : Z:\pestpcbsrv\HPCHEM1\ECD_L\Data\PL102623\
 Data File : PL086165.D
 Signal(s) : Signal #1: ECD1A.ch Signal #2: ECD2B.ch
 Acq On : 26 Oct 2023 14:48
 Operator : AR\AJ
 Sample : RESC201
 Misc :
 ALS Vial : 2 Sample Multiplier: 1

Instrument :
 ECD_L
 ClientSampleId :
 RESC214

Integration File signal 1: autoint1.e
 Integration File signal 2: autoint2.e
 Quant Time: Oct 27 08:28:26 2023
 Quant Method : Z:\pestpcbsrv\HPCHEM1\ECD_L\methods\PL102623CLP.M
 Quant Title : GC Extractables
 QLast Update : Fri Oct 27 01:35:51 2023
 Response via : Initial Calibration
 Integrator: ChemStation

Volume Inj. : 1 µl
 Signal #1 Phase : ZB-MR2 Signal #2 Phase: ZB-MR1
 Signal #1 Info : 30M x 0.32mm x0.2 Signal #2 Info : 30M x 0.32mm x 0.50µm



(16) 4,4'-DDD (A)
 6.545min 19.407 ng/ml
 response 46044106

(16) 4,4'-DDD #2 (A)
 5.637min 18.637 ng/ml
 response 16312842