

Data Path : Z:\pestpcbsrv\HPCHEM1\ECD_L\Data\PL102722\
 Data File : PL078558.D
 Signal(s) : Signal #1: ECD1A.ch Signal #2: ECD2B.ch
 Acq On : 26 Oct 2022 16:34
 Operator : AR\AJ
 Sample : N5272-02
 Misc :
 ALS Vial : 11 Sample Multiplier: 1

Instrument :
 ECD_L
 ClientSampleId :

Integration File signal 1: autoint1.e
 Integration File signal 2: autoint2.e
 Quant Time: Oct 26 21:41:27 2022
 Quant Method : Z:\pestpcbsrv\HPCHEM1\ECD_L\methods\PL102122.M
 Quant Title : GC Extractables
 QLast Update : Fri Oct 21 07:08:41 2022
 Response via : Initial Calibration
 Integrator: ChemStation

Volume Inj. : 1 µl
 Signal #1 Phase : ZB-MR2 Signal #2 Phase: ZB-MR1
 Signal #1 Info : 30M x 0.32mm x0.2 Signal #2 Info : 30M x 0.32mm x0.5µm

Compound	RT#1	RT#2	Resp#1	Resp#2	ng/ml	ng/ml

System Monitoring Compounds						
1) SA Tetrachlo...	3.323	2.572	38867994	53235927	20.382	20.851
28) SA Decachlor...	8.776	7.642	22869877	30199382	15.202	15.944
Target Compounds						
2) A alpha-BHC	3.788	0.000	139083	0	0.048	N.D. #
6) B beta-BHC	4.303f	0.000	1510533	0	1.311	N.D. #
7) B delta-BHC	4.542f	0.000	519820	0	0.228	N.D. #
8) B Heptachlo...	0.000	4.484	0	236884	N.D.	0.079 #
9) A Endosulfan I	5.864f	0.000	254947	0	0.119	N.D. #
10) B gamma-Chl...	0.000	4.746f	0	187994	N.D.	0.061 #
11) B alpha-Chl...	5.769f	0.000	448612	0	0.194	N.D. #
12) B 4,4'-DDE	5.975	0.000	398564	0	0.199	N.D. #
13) MA Dieldrin	0.000	5.107	0	225885	N.D.	0.076 #
14) MA Endrin	6.347	5.397f	1077289	768651	0.568	0.295 #
15) B Endosulfa...	6.556f	0.000	1105038	0	0.589	N.D. #
17) MA 4,4'-DDT	6.833f	0.000	216847	0	0.121	N.D. #
19) B Endosulfa...	6.956	0.000	271977	0	0.148	N.D. #
21) B Endrin ke...	7.435	0.000	272546	0	0.145	N.D. #
22) Mirex	7.880	0.000	551754	0	0.378	N.D. #
23) Chlordane-1	0.000	3.552	0	290927	N.D.	2.885 #
25) Chlordane-3	0.000	4.746f	0	187994	N.D.	0.617 #
26) Chlordane-4	5.769f	0.000	448612	0	1.093	N.D. #

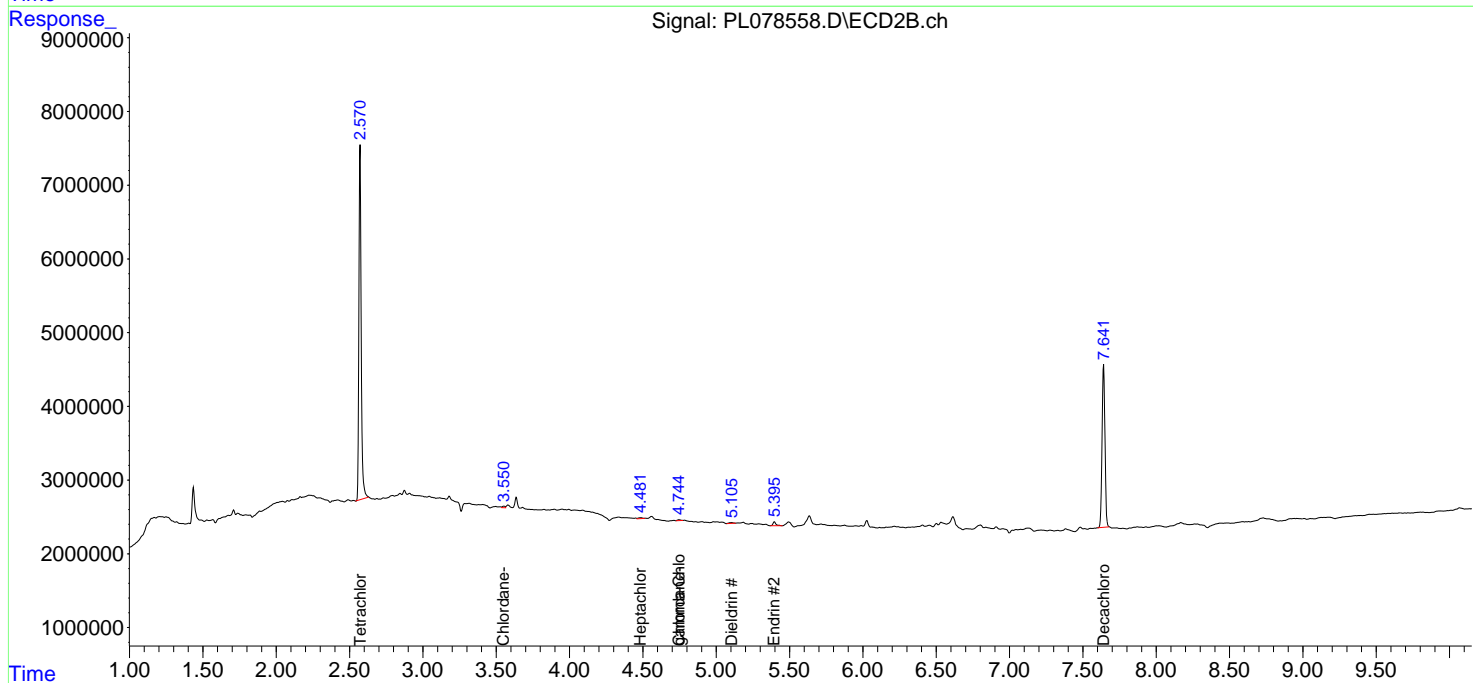
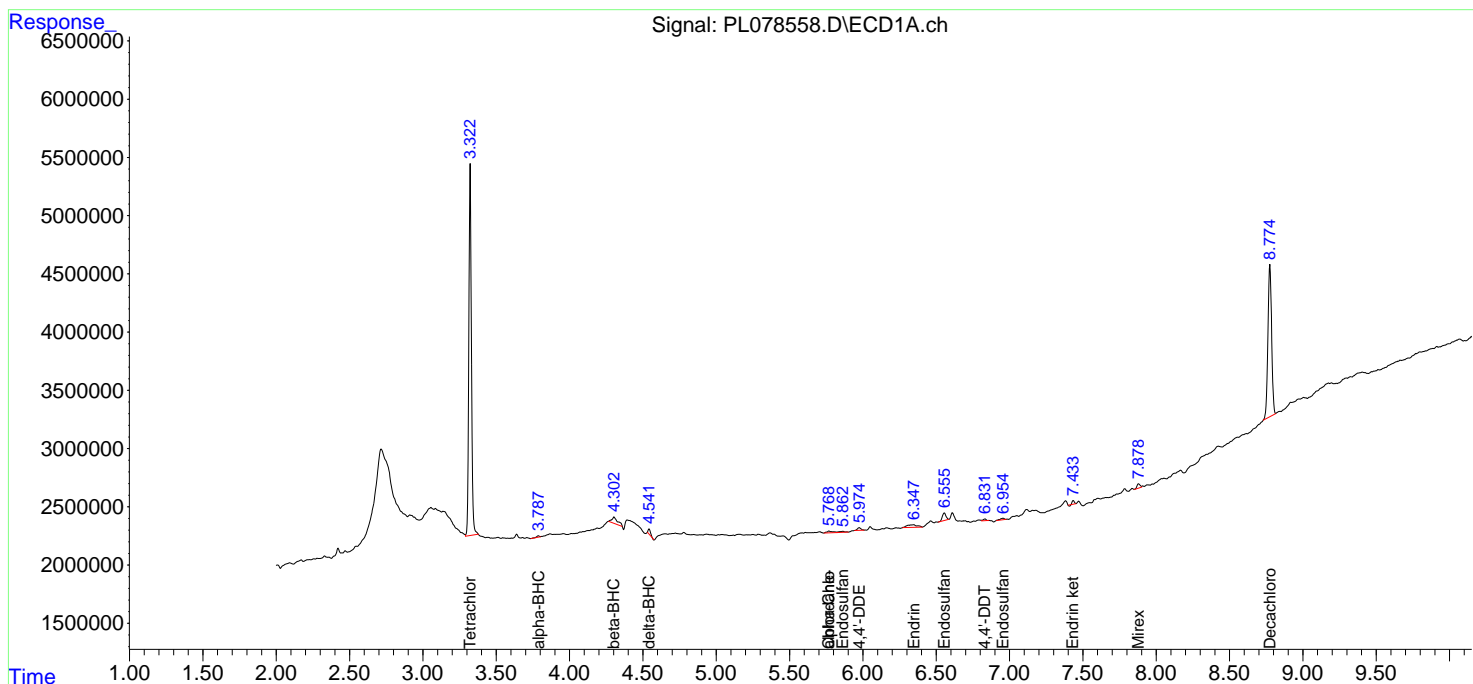
(f)=RT Delta > 1/2 Window (#)=Amounts differ by > 25% (m)=manual int.

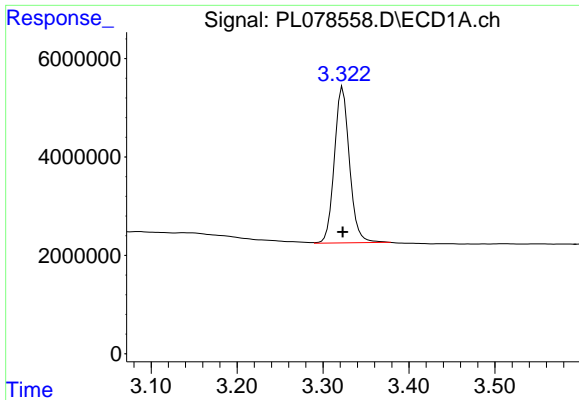
Data Path : Z:\pestpcbsrv\HPCHEM1\ECD_L\Data\PL102722\
 Data File : PL078558.D
 Signal(s) : Signal #1: ECD1A.ch Signal #2: ECD2B.ch
 Acq On : 26 Oct 2022 16:34
 Operator : AR\AJ
 Sample : N5272-02
 Misc :
 ALS Vial : 11 Sample Multiplier: 1

Instrument :
 ECD_L
 ClientSampleId :

Integration File signal 1: autoint1.e
 Integration File signal 2: autoint2.e
 Quant Time: Oct 26 21:41:27 2022
 Quant Method : Z:\pestpcbsrv\HPCHEM1\ECD_L\methods\PL102122.M
 Quant Title : GC Extractables
 QLast Update : Fri Oct 21 07:08:41 2022
 Response via : Initial Calibration
 Integrator: ChemStation

Volume Inj. : 1 µl
 Signal #1 Phase : ZB-MR2 Signal #2 Phase: ZB-MR1
 Signal #1 Info : 30M x 0.32mm x0.2 Signal #2 Info : 30M x 0.32mm x0.5µm

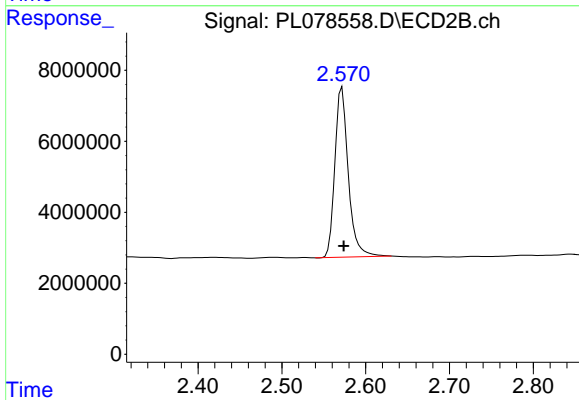




#1 Tetrachloro-m-xylene

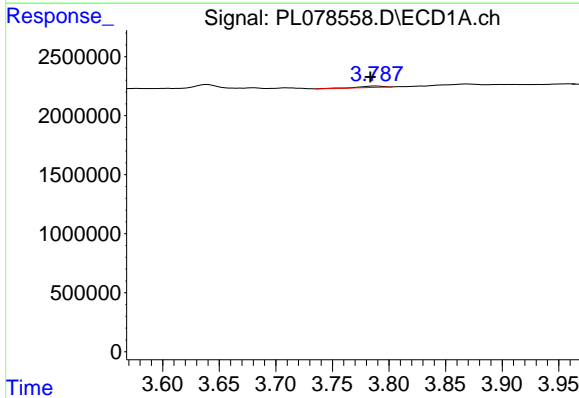
R.T.: 3.323 min
 Delta R.T.: 0.000 min
 Response: 38867994
 Conc: 20.38 ng/ml

Instrument :
 ECD_L
 ClientSampleId :



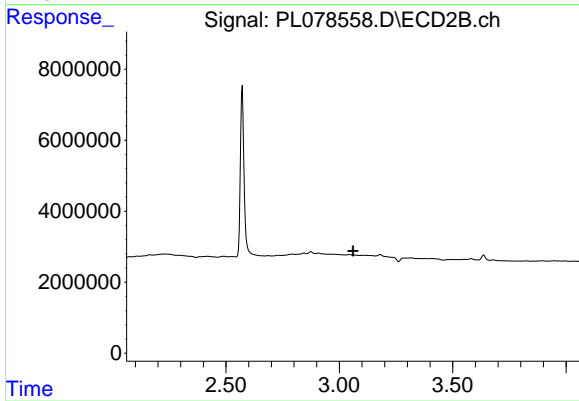
#1 Tetrachloro-m-xylene

R.T.: 2.572 min
 Delta R.T.: -0.002 min
 Response: 53235927
 Conc: 20.85 ng/ml



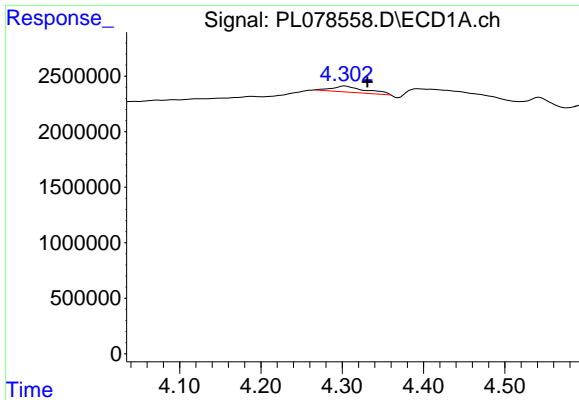
#2 alpha-BHC

R.T.: 3.788 min
 Delta R.T.: 0.004 min
 Response: 139083
 Conc: 0.05 ng/ml



#2 alpha-BHC

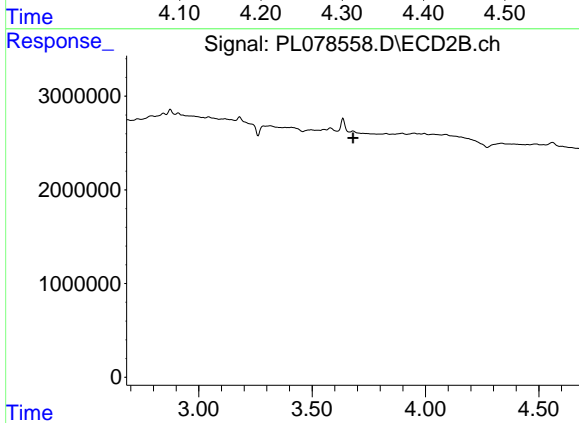
R.T.: 0.000 min
 Exp R.T. : 3.061 min
 Response: 0
 Conc: N.D.



#6 beta-BHC

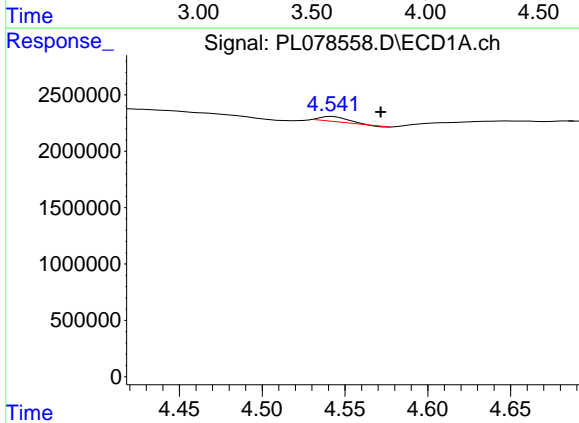
R.T.: 4.303 min
 Delta R.T.: -0.028 min
 Response: 1510533
 Conc: 1.31 ng/ml

Instrument :
 ECD_L
 ClientSampleId :



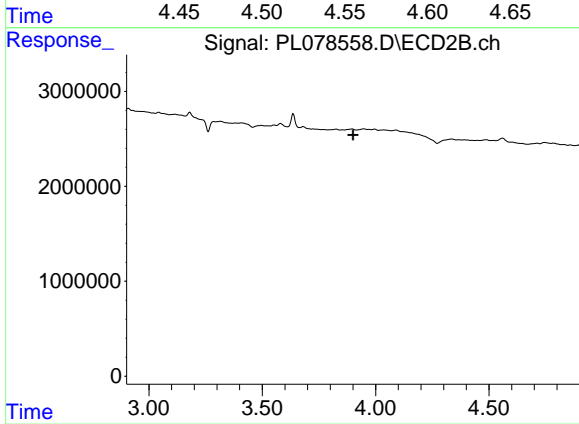
#6 beta-BHC

R.T.: 0.000 min
 Exp R.T. : 3.681 min
 Response: 0
 Conc: N.D.



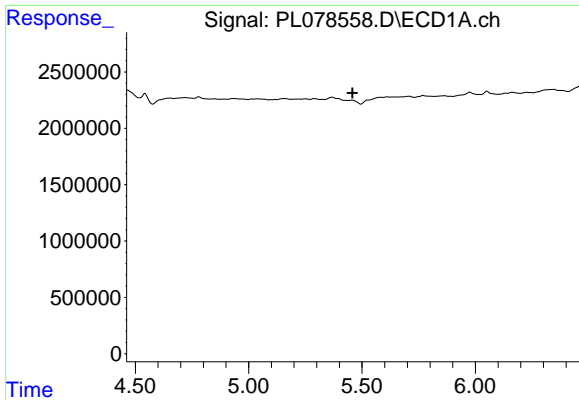
#7 delta-BHC

R.T.: 4.542 min
 Delta R.T.: -0.029 min
 Response: 519820
 Conc: 0.23 ng/ml



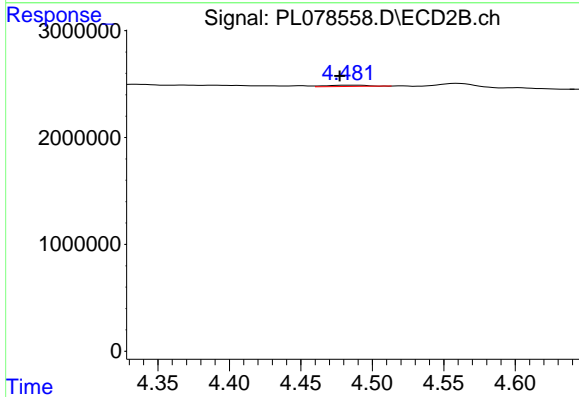
#7 delta-BHC

R.T.: 0.000 min
 Exp R.T. : 3.901 min
 Response: 0
 Conc: N.D.

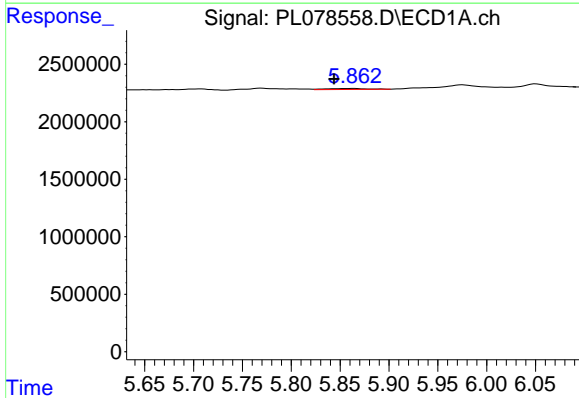


#8 Heptachlor epoxide
 R.T.: 0.000 min
 Exp R.T.: 5.459 min
 Response: 0
 Conc: N.D.

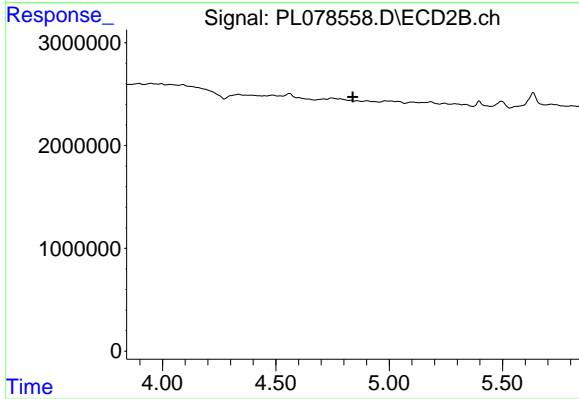
Instrument :
 ECD_L
 ClientSampleId :



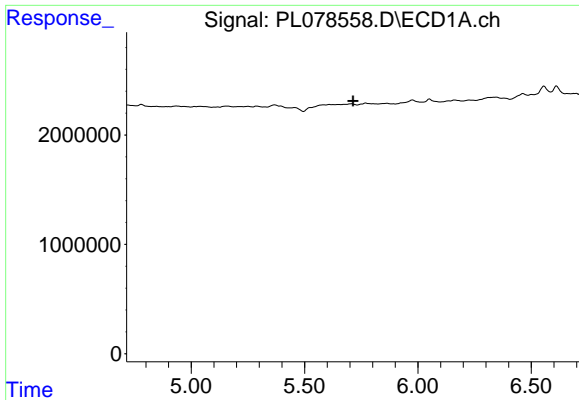
#8 Heptachlor epoxide
 R.T.: 4.484 min
 Delta R.T.: 0.007 min
 Response: 236884
 Conc: 0.08 ng/ml



#9 Endosulfan I
 R.T.: 5.864 min
 Delta R.T.: 0.020 min
 Response: 254947
 Conc: 0.12 ng/ml



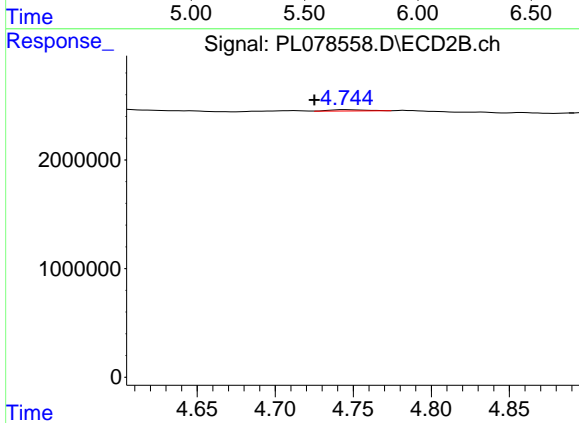
#9 Endosulfan I
 R.T.: 0.000 min
 Exp R.T.: 4.840 min
 Response: 0
 Conc: N.D.



#10 gamma-Chlordane

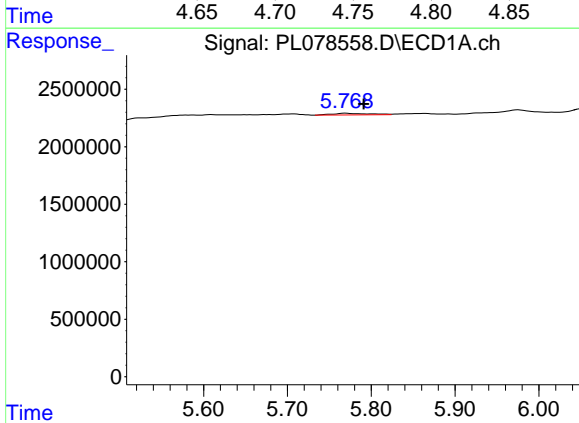
R.T.: 0.000 min
 Exp R.T.: 5.715 min
 Response: 0
 Conc: N.D.

Instrument :
 ECD_L
 ClientSampleId :



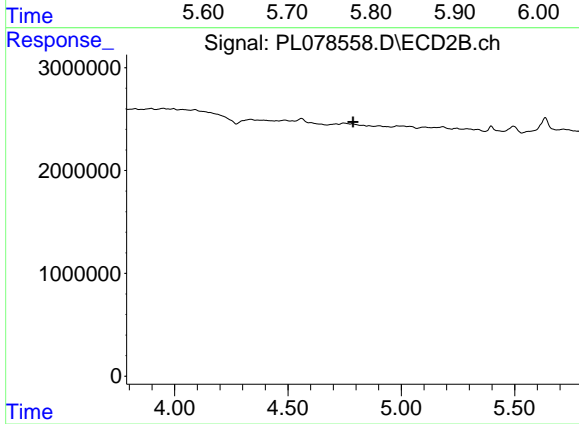
#10 gamma-Chlordane

R.T.: 4.746 min
 Delta R.T.: 0.021 min
 Response: 187994
 Conc: 0.06 ng/ml



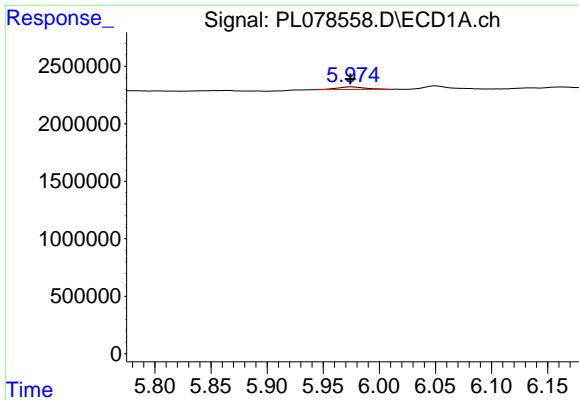
#11 alpha-Chlordane

R.T.: 5.769 min
 Delta R.T.: -0.022 min
 Response: 448612
 Conc: 0.19 ng/ml



#11 alpha-Chlordane

R.T.: 0.000 min
 Exp R.T.: 4.787 min
 Response: 0
 Conc: N.D.

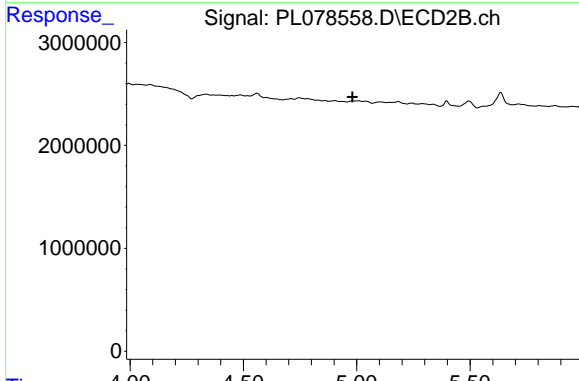


#12 4,4'-DDE

R.T.: 5.975 min
 Delta R.T.: 0.001 min
 Response: 398564
 Conc: 0.20 ng/ml

Instrument :
 ECD_L
 ClientSampleId :

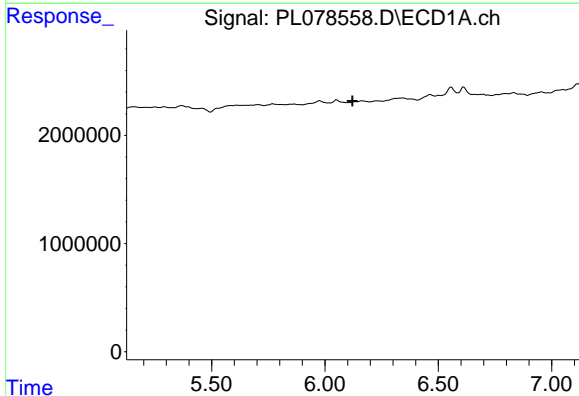
Time 5.80 5.85 5.90 5.95 6.00 6.05 6.10 6.15



#12 4,4'-DDE

R.T.: 0.000 min
 Exp R.T. : 4.982 min
 Response: 0
 Conc: N.D.

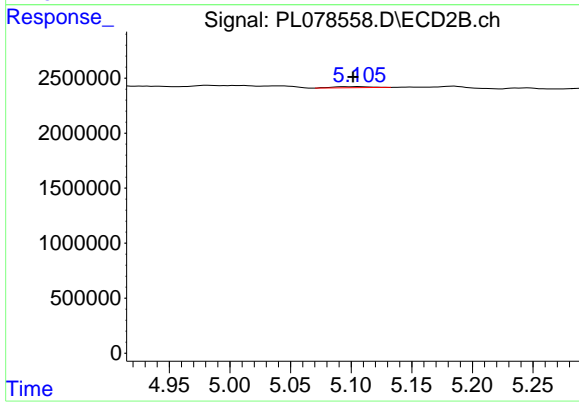
Time 4.00 4.50 5.00 5.50



#13 Dieldrin

R.T.: 0.000 min
 Exp R.T. : 6.121 min
 Response: 0
 Conc: N.D.

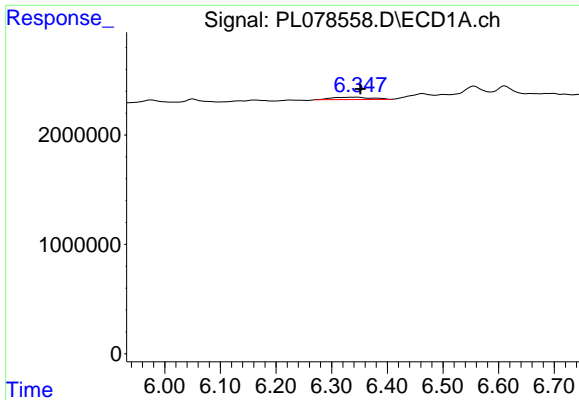
Time 5.50 6.00 6.50 7.00



#13 Dieldrin

R.T.: 5.107 min
 Delta R.T.: 0.005 min
 Response: 225885
 Conc: 0.08 ng/ml

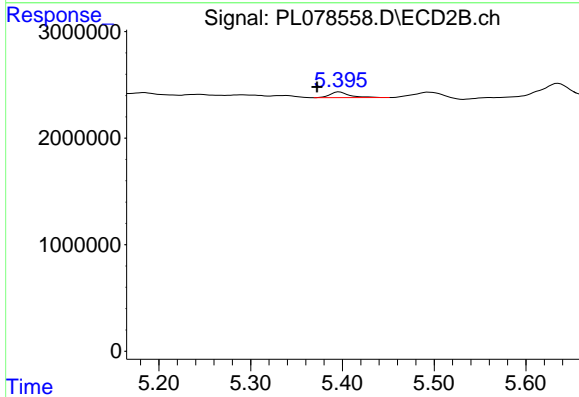
Time 4.95 5.00 5.05 5.10 5.15 5.20 5.25



#14 Endrin

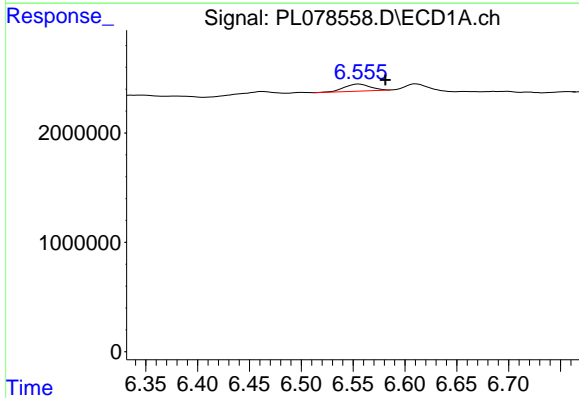
R.T.: 6.347 min
 Delta R.T.: -0.004 min
 Response: 1077289
 Conc: 0.57 ng/ml

Instrument :
 ECD_L
 ClientSampleId :



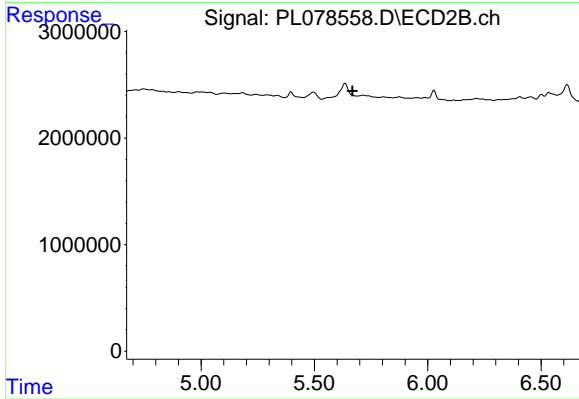
#14 Endrin

R.T.: 5.397 min
 Delta R.T.: 0.024 min
 Response: 768651
 Conc: 0.30 ng/ml



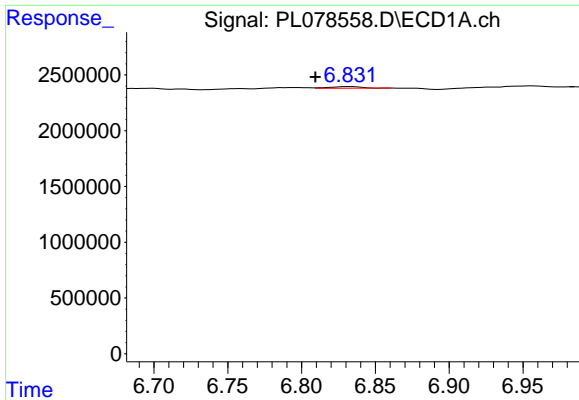
#15 Endosulfan II

R.T.: 6.556 min
 Delta R.T.: -0.025 min
 Response: 1105038
 Conc: 0.59 ng/ml



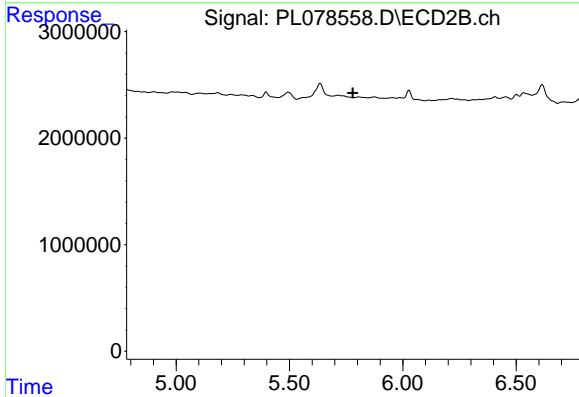
#15 Endosulfan II

R.T.: 0.000 min
 Exp R.T. : 5.669 min
 Response: 0
 Conc: N.D.

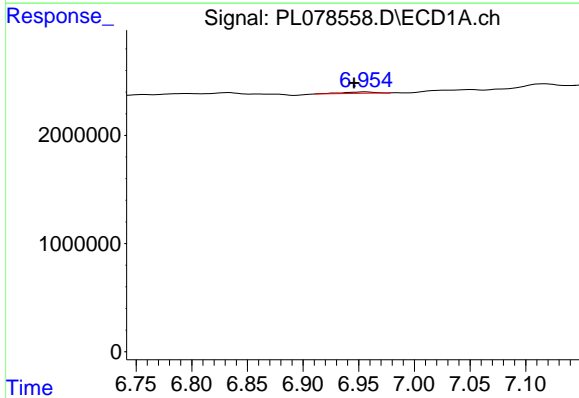


#17 4,4'-DDT
 R.T.: 6.833 min
 Delta R.T.: 0.023 min
 Response: 216847
 Conc: 0.12 ng/ml

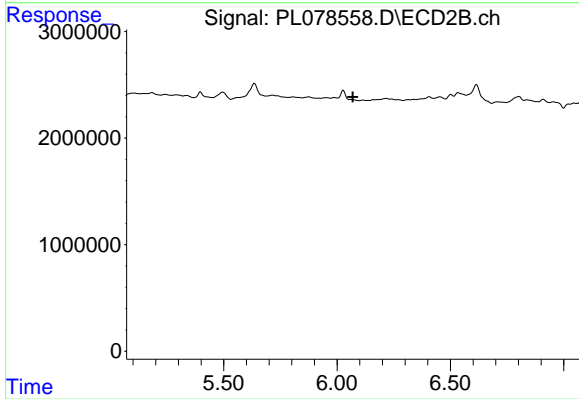
Instrument :
 ECD_L
 ClientSampleId :



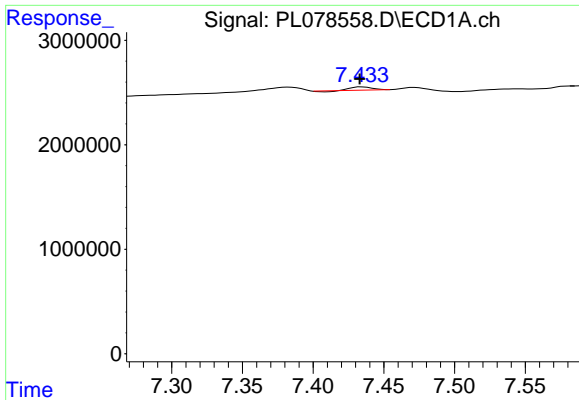
#17 4,4'-DDT
 R.T.: 0.000 min
 Exp R.T. : 5.779 min
 Response: 0
 Conc: N.D.



#19 Endosulfan Sulfate
 R.T.: 6.956 min
 Delta R.T.: 0.010 min
 Response: 271977
 Conc: 0.15 ng/ml

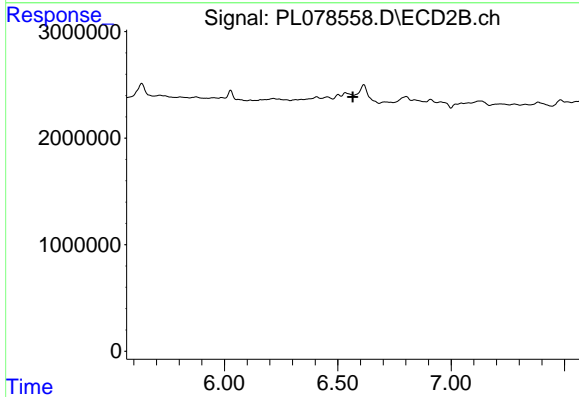


#19 Endosulfan Sulfate
 R.T.: 0.000 min
 Exp R.T. : 6.069 min
 Response: 0
 Conc: N.D.

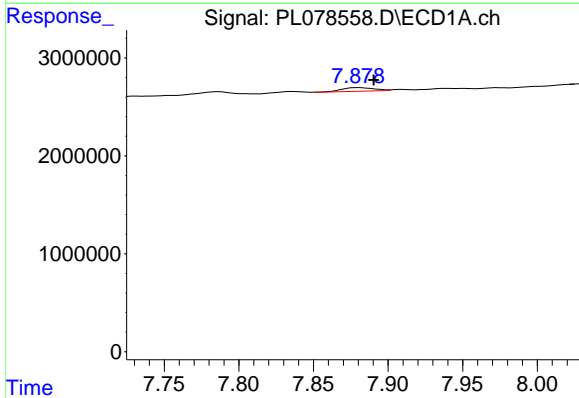


#21 Endrin ketone
 R.T.: 7.435 min
 Delta R.T.: 0.002 min
 Response: 272546
 Conc: 0.14 ng/ml

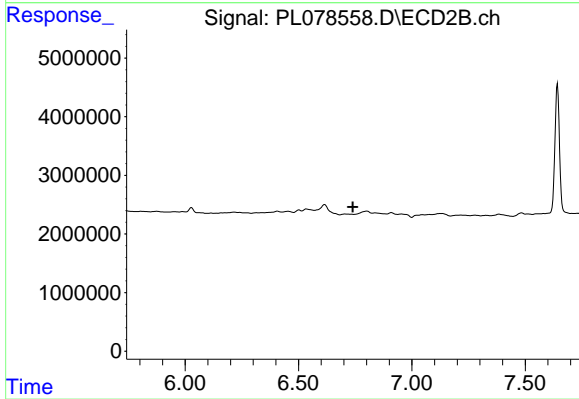
Instrument :
 ECD_L
 ClientSampleId :



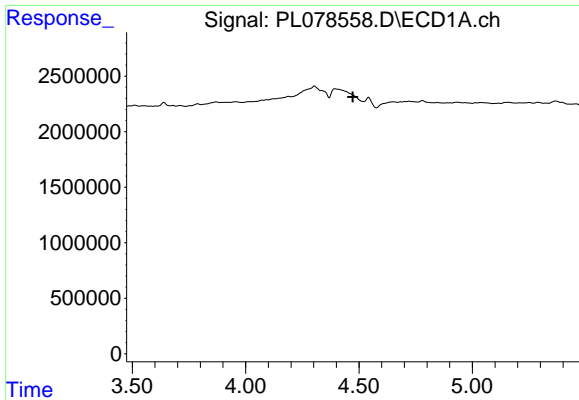
#21 Endrin ketone
 R.T.: 0.000 min
 Exp R.T. : 6.566 min
 Response: 0
 Conc: N.D.



#22 Mirex
 R.T.: 7.880 min
 Delta R.T.: -0.010 min
 Response: 551754
 Conc: 0.38 ng/ml



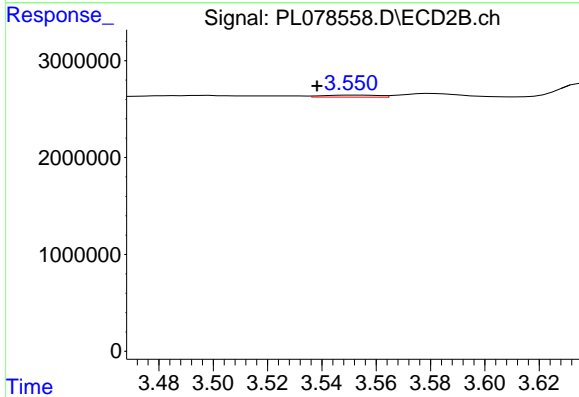
#22 Mirex
 R.T.: 0.000 min
 Exp R.T. : 6.739 min
 Response: 0
 Conc: N.D.



#23 Chlordane-1

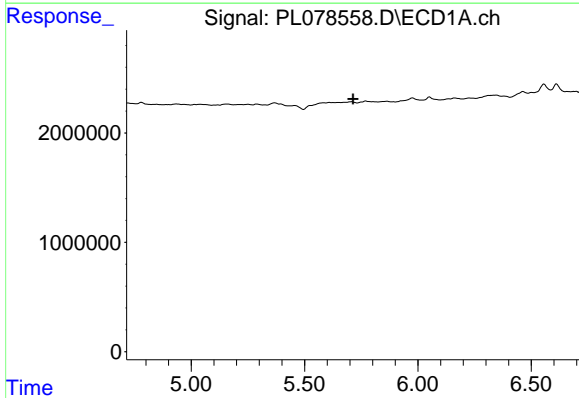
R.T.: 0.000 min
 Exp R.T.: 4.472 min
 Response: 0
 Conc: N.D.

Instrument :
 ECD_L
 ClientSampleId :



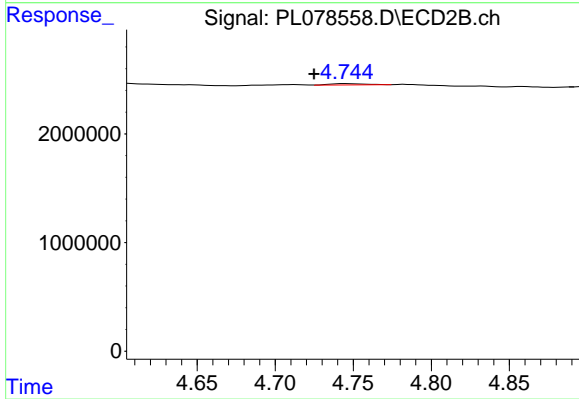
#23 Chlordane-1

R.T.: 3.552 min
 Delta R.T.: 0.013 min
 Response: 290927
 Conc: 2.88 ng/ml



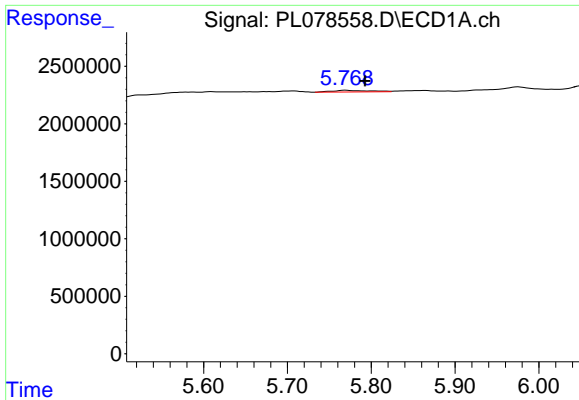
#25 Chlordane-3

R.T.: 0.000 min
 Exp R.T.: 5.715 min
 Response: 0
 Conc: N.D.



#25 Chlordane-3

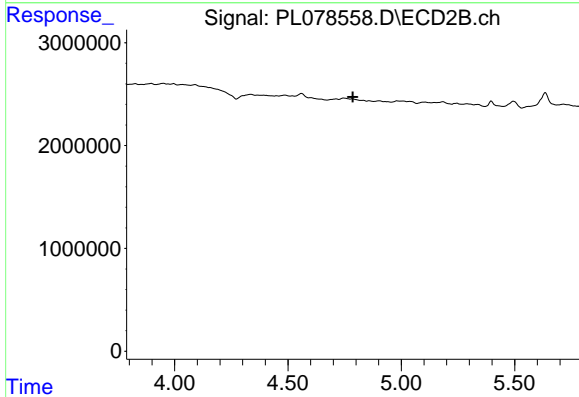
R.T.: 4.746 min
 Delta R.T.: 0.021 min
 Response: 187994
 Conc: 0.62 ng/ml



#26 Chlordane-4

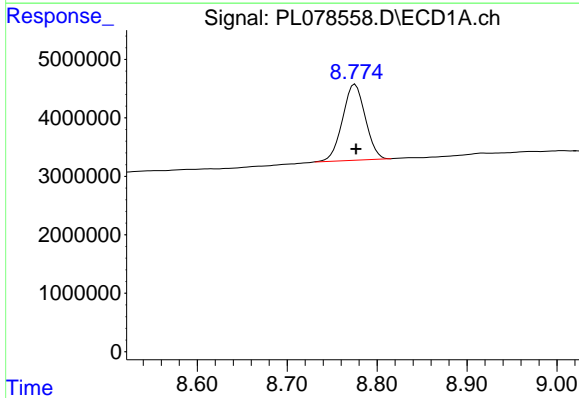
R.T.: 5.769 min
 Delta R.T.: -0.024 min
 Response: 448612
 Conc: 1.09 ng/ml

Instrument :
 ECD_L
 ClientSampleId :



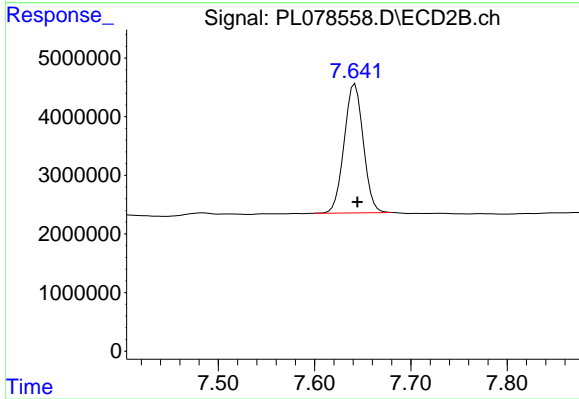
#26 Chlordane-4

R.T.: 0.000 min
 Exp R.T. : 4.785 min
 Response: 0
 Conc: N.D.



#28 Decachlorobiphenyl

R.T.: 8.776 min
 Delta R.T.: 0.000 min
 Response: 22869877
 Conc: 15.20 ng/ml



#28 Decachlorobiphenyl

R.T.: 7.642 min
 Delta R.T.: -0.002 min
 Response: 30199382
 Conc: 15.94 ng/ml