

Data Path : Z:\pestpcbsrv\HPCHEM1\ECD_L\Data\PL102723\
 Data File : PL086226.D
 Signal(s) : Signal #1: ECD1A.ch Signal #2: ECD2B.ch
 Acq On : 27 Oct 2023 21:55
 Operator : AR\AJ
 Sample : 04953-10DMS
 Misc :
 ALS Vial : 39 Sample Multiplier: 1

Integration File signal 1: autoint1.e
 Integration File signal 2: autoint2.e
 Quant Time: Oct 28 05:34:57 2023
 Quant Method : Z:\pestpcbsrv\HPCHEM1\ECD_L\methods\PL102623CLP.M
 Quant Title : GC Extractables
 QLast Update : Fri Oct 27 01:35:51 2023
 Response via : Initial Calibration
 Integrator: ChemStation

Volume Inj. : 1 µl
 Signal #1 Phase : ZB-MR2 Signal #2 Phase: ZB-MR1
 Signal #1 Info : 30M x 0.32mm x0.2 Signal #2 Info : 30M x 0.32mm x 0.50µm

Compound	RT#1	RT#2	Resp#1	Resp#2	ng/ml	ng/ml

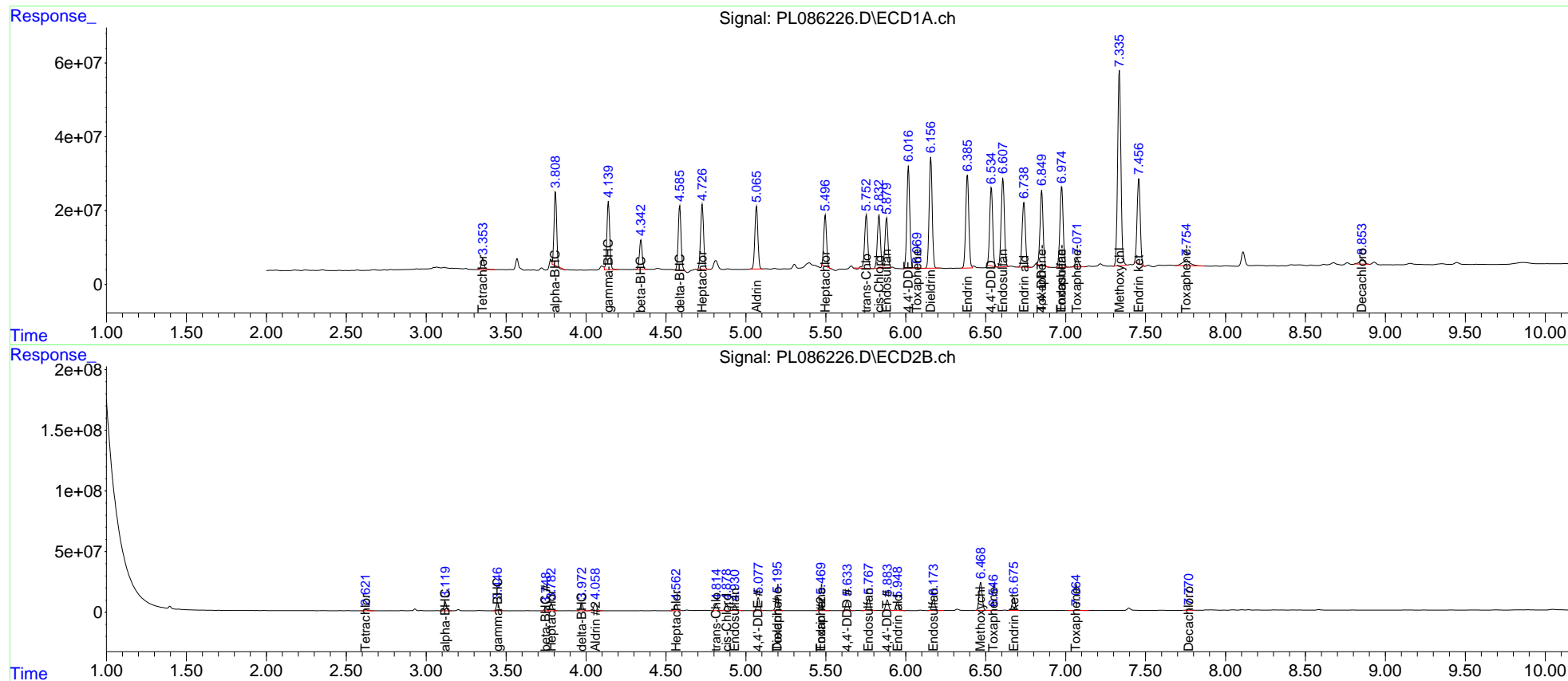
System Monitoring Compounds						
1) SA Tetrachlo...	3.355	2.622	36684474	12248210	12.871	13.504
27) SA Decachlor...	8.854	7.771	29399429	13914445	11.797	12.121
Target Compounds						
2) A alpha-BHC	3.809	3.120	221.0E6	75822572	52.698	60.320
3) MA gamma-BHC...	4.140	3.447	229.2E6	68879883	57.068	57.420
4) MA Heptachlor	4.727	3.783	226.2E6	71596399	56.995	56.430
5) MB Aldrin	5.067	4.059	223.7E6	84058968	56.327	69.605
6) B beta-BHC	4.343	3.749	97374646	30707882	52.573	50.110
7) B delta-BHC	4.587	3.974	212.2E6	67371971	57.039	54.011
8) B Heptachlo...	5.497	4.564	166.6E6	63045682	49.141	54.058
9) A Endosulfan I	5.880	4.932	176.1E6	51625814	54.819	48.086
10) B trans-Chl...	5.753	4.815	195.4E6	64370781	55.865	56.216
11) B cis-Chlor...	5.833	4.879	194.8E6	64710245	55.411	54.831
12) B 4,4'-DDE	6.017	5.078	357.4E6	128.4E6	113.875	117.246
13) MA Dieldrin	6.157	5.197	400.7E6	140.7E6	114.028	116.060
14) MA Endrin	6.386	5.471	341.3E6	125.6E6	116.379	121.895
15) B Endosulfa...	6.608	5.768	328.9E6	122.4E6	105.086	112.401
16) A 4,4'-DDD	6.535	5.634	279.2E6	108.2E6	117.683	123.598
17) MA 4,4'-DDT	6.850	5.885	269.1E6	110.6E6	112.416	122.885
18) B Endrin al...	6.739	5.949	246.6E6	93299551	105.945	98.520
19) B Endosulfa...	6.975	6.174	309.4E6	117.7E6	108.803	107.347
20) A Methoxychlor	7.336	6.469	762.7E6	314.9E6	604.772	548.928
21) B Endrin ke...	7.458	6.676	317.0E6	136.8E6	110.031	110.984
22) Toxaphene-1	6.070	5.197	265886	140.7E6	11.791	24974.072 #
23) Toxaphene-2	6.850	5.471f	269.1E6	125.6E6	3113.736	18371.572 #
24) Toxaphene-3	6.975	6.547	309.4E6	1798156	4930.129	48.891 #
25) Toxaphene-4	7.072	0.000	34057712	0	906.244	N.D. #
26) Toxaphene-5	7.755	7.065f	50823513	7310387	1151.580	549.415 #

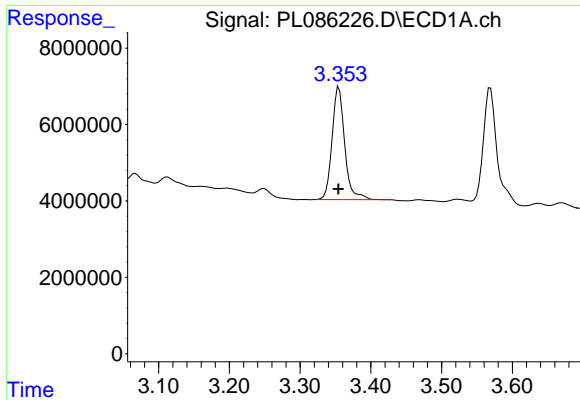
(f)=RT Delta > 1/2 Window (#)=Amounts differ by > 25% (m)=manual int.

Data Path : Z:\pestpcbsrv\HPCHEM1\ECD_L\Data\PL102723\
 Data File : PL086226.D
 Signal(s) : Signal #1: ECD1A.ch Signal #2: ECD2B.ch
 Acq On : 27 Oct 2023 21:55
 Operator : AR\AJ
 Sample : 04953-10DMS
 Misc :
 ALS Vial : 39 Sample Multiplier: 1

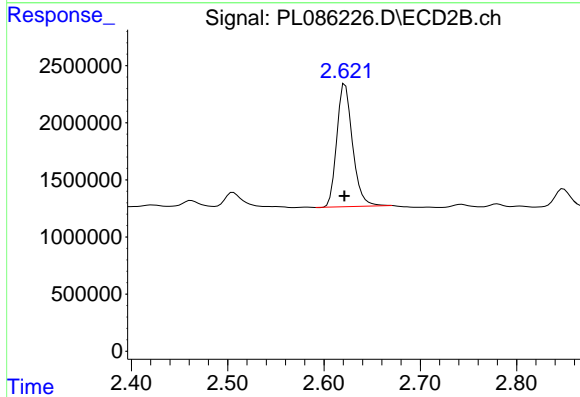
Integration File signal 1: autoint1.e
 Integration File signal 2: autoint2.e
 Quant Time: Oct 28 05:34:57 2023
 Quant Method : Z:\pestpcbsrv\HPCHEM1\ECD_L\methods\PL102623CLP.M
 Quant Title : GC Extractables
 QLast Update : Fri Oct 27 01:35:51 2023
 Response via : Initial Calibration
 Integrator: ChemStation

Volume Inj. : 1 µl
 Signal #1 Phase : ZB-MR2 Signal #2 Phase: ZB-MR1
 Signal #1 Info : 30M x 0.32mm x0.2 Signal #2 Info : 30M x 0.32mm x 0.50µm

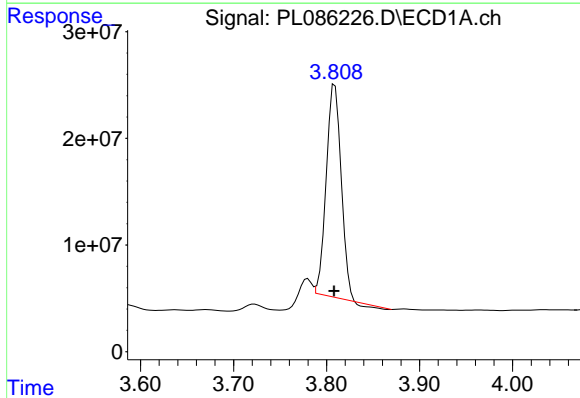




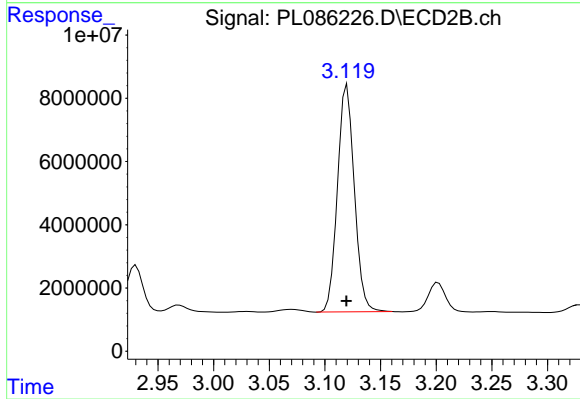
#1 Tetrachloro-m-xylene
 R.T.: 3.355 min
 Delta R.T.: 0.000 min
 Response: 36684474
 Conc: 12.87 ng/ml



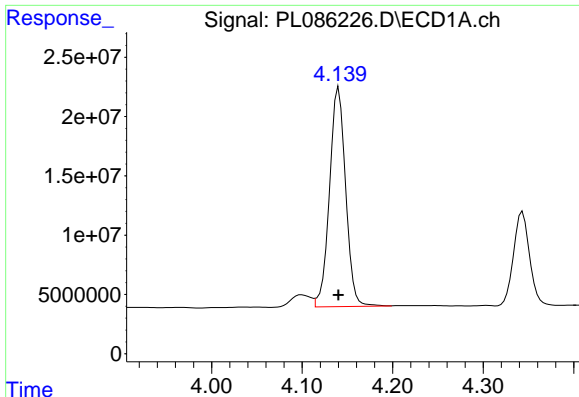
#1 Tetrachloro-m-xylene
 R.T.: 2.622 min
 Delta R.T.: 0.001 min
 Response: 12248210
 Conc: 13.50 ng/ml



#2 alpha-BHC
 R.T.: 3.809 min
 Delta R.T.: 0.000 min
 Response: 221043148
 Conc: 52.70 ng/ml

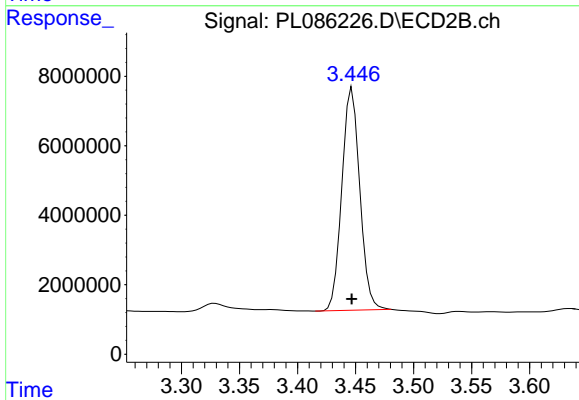


#2 alpha-BHC
 R.T.: 3.120 min
 Delta R.T.: 0.000 min
 Response: 75822572
 Conc: 60.32 ng/ml



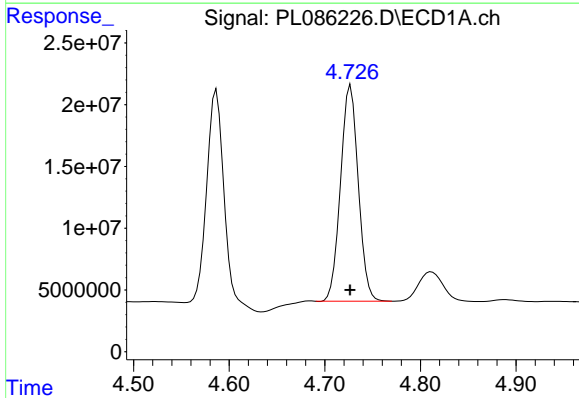
#3 gamma-BHC (Lindane)

R.T.: 4.140 min
Delta R.T.: 0.000 min
Response: 229233894
Conc: 57.07 ng/ml



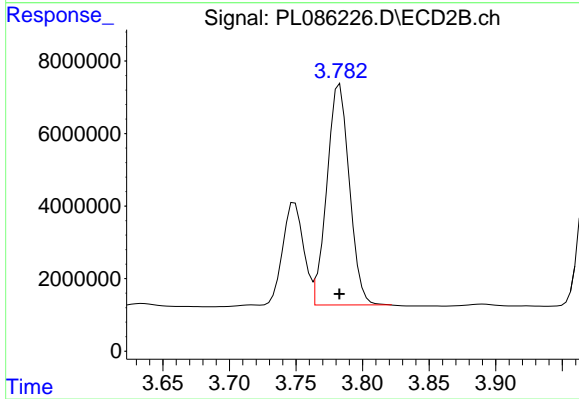
#3 gamma-BHC (Lindane)

R.T.: 3.447 min
Delta R.T.: 0.000 min
Response: 68879883
Conc: 57.42 ng/ml



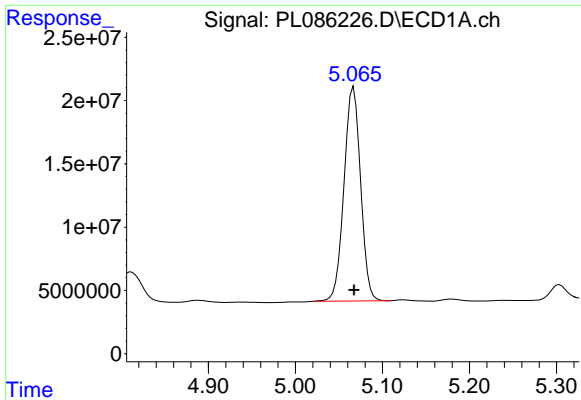
#4 Heptachlor

R.T.: 4.727 min
Delta R.T.: 0.000 min
Response: 226173834
Conc: 56.99 ng/ml

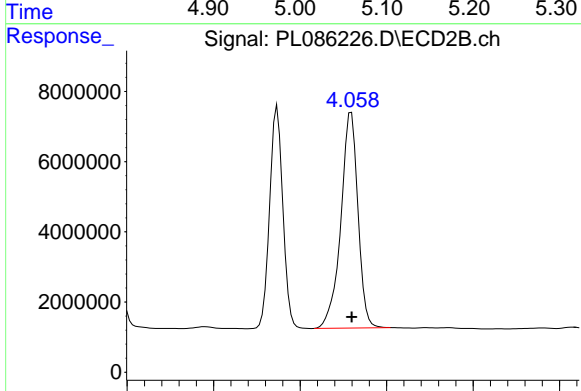


#4 Heptachlor

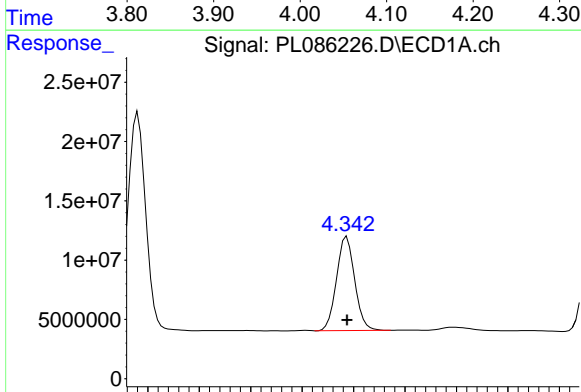
R.T.: 3.783 min
Delta R.T.: 0.000 min
Response: 71596399
Conc: 56.43 ng/ml



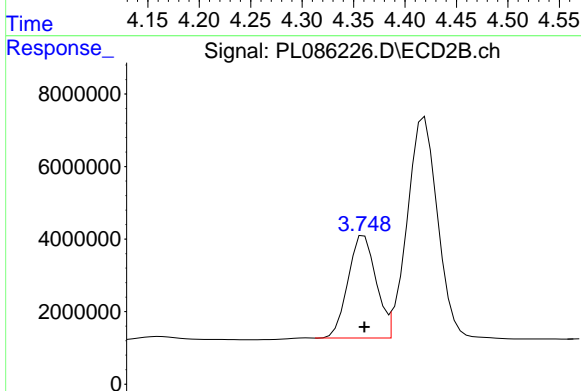
#5 Aldrin
 R.T.: 5.067 min
 Delta R.T.: 0.000 min
 Response: 223722927
 Conc: 56.33 ng/ml



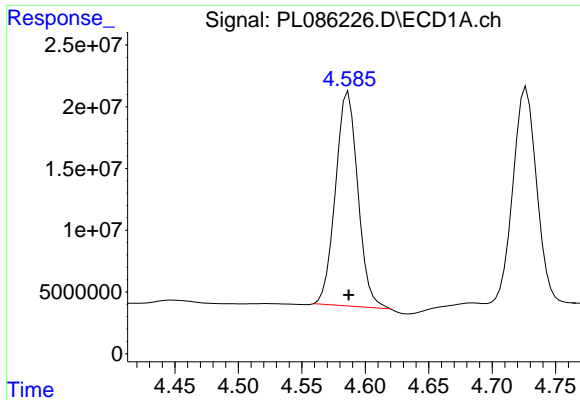
#5 Aldrin
 R.T.: 4.059 min
 Delta R.T.: 0.000 min
 Response: 84058968
 Conc: 69.61 ng/ml



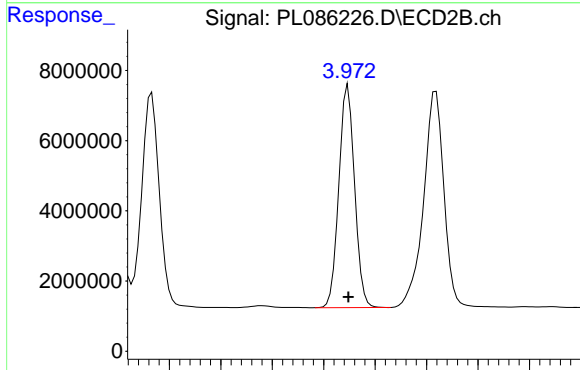
#6 beta-BHC
 R.T.: 4.343 min
 Delta R.T.: 0.000 min
 Response: 97374646
 Conc: 52.57 ng/ml



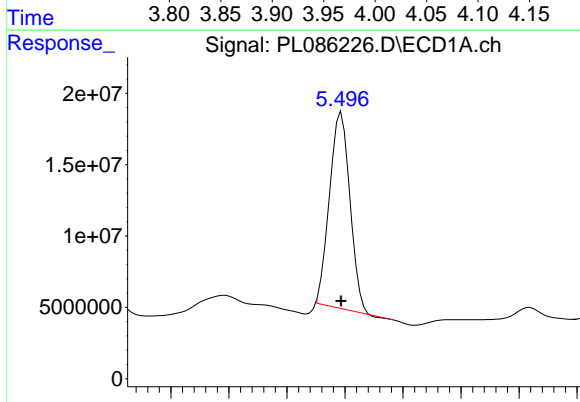
#6 beta-BHC
 R.T.: 3.749 min
 Delta R.T.: 0.000 min
 Response: 30707882
 Conc: 50.11 ng/ml



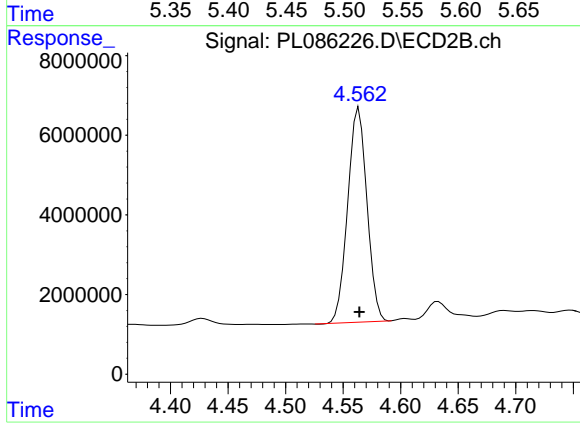
#7 delta-BHC
 R.T.: 4.587 min
 Delta R.T.: 0.000 min
 Response: 212197426
 Conc: 57.04 ng/ml



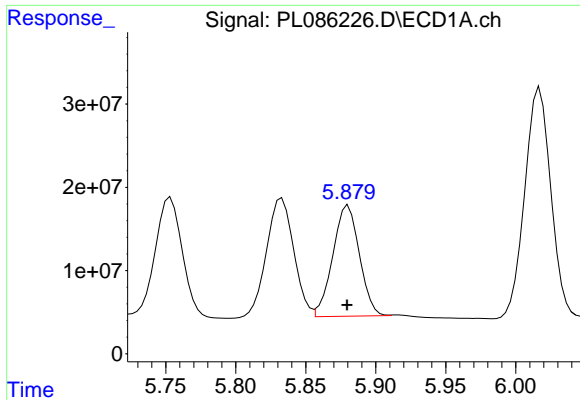
#7 delta-BHC
 R.T.: 3.974 min
 Delta R.T.: 0.000 min
 Response: 67371971
 Conc: 54.01 ng/ml



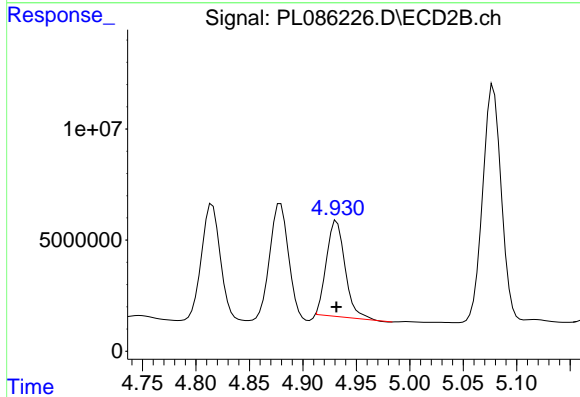
#8 Heptachlor epoxide
 R.T.: 5.497 min
 Delta R.T.: 0.000 min
 Response: 166625189
 Conc: 49.14 ng/ml



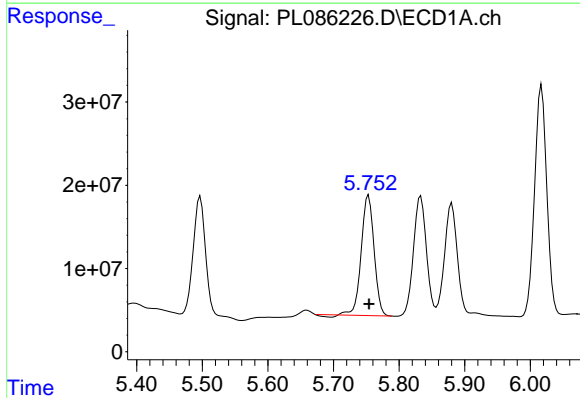
#8 Heptachlor epoxide
 R.T.: 4.564 min
 Delta R.T.: 0.000 min
 Response: 63045682
 Conc: 54.06 ng/ml



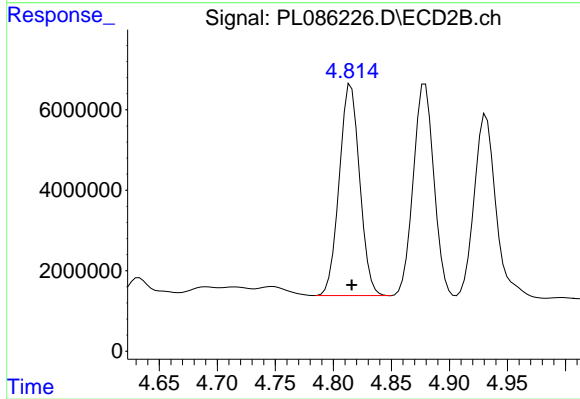
#9 Endosulfan I
 R.T.: 5.880 min
 Delta R.T.: 0.000 min
 Response: 176124116
 Conc: 54.82 ng/ml



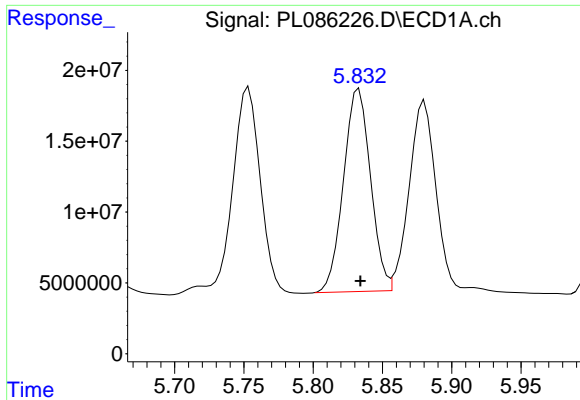
#9 Endosulfan I
 R.T.: 4.932 min
 Delta R.T.: 0.000 min
 Response: 51625814
 Conc: 48.09 ng/ml



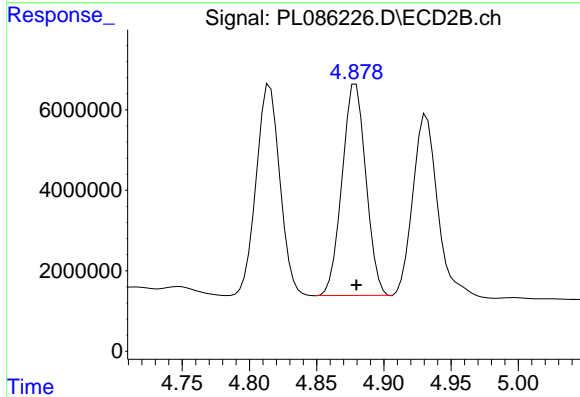
#10 trans-Chlordane
 R.T.: 5.753 min
 Delta R.T.: -0.001 min
 Response: 195360492
 Conc: 55.86 ng/ml



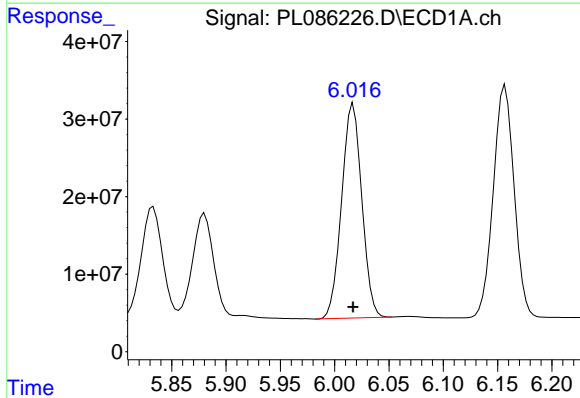
#10 trans-Chlordane
 R.T.: 4.815 min
 Delta R.T.: 0.000 min
 Response: 64370781
 Conc: 56.22 ng/ml



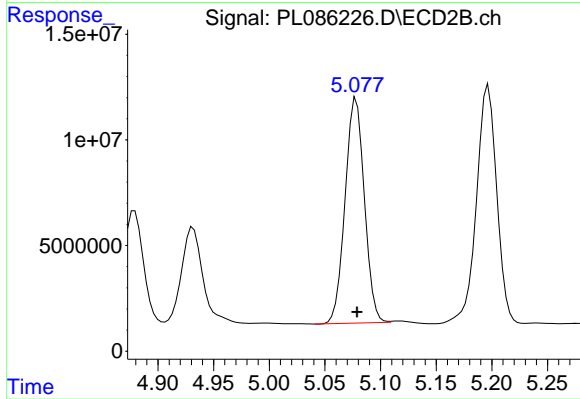
#11 cis-Chlordane
R.T.: 5.833 min
Delta R.T.: 0.000 min
Response: 194780827
Conc: 55.41 ng/ml



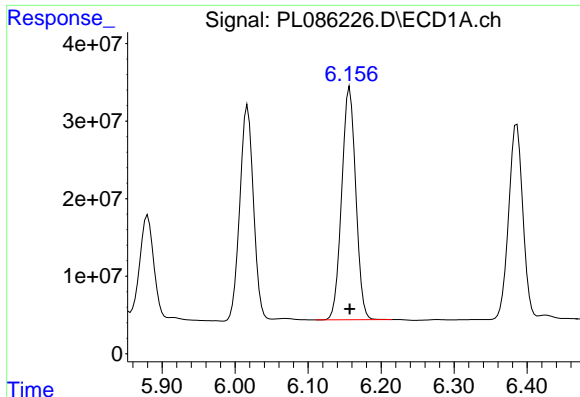
#11 cis-Chlordane
R.T.: 4.879 min
Delta R.T.: 0.000 min
Response: 64710245
Conc: 54.83 ng/ml



#12 4,4'-DDE
R.T.: 6.017 min
Delta R.T.: 0.000 min
Response: 357430872
Conc: 113.88 ng/ml

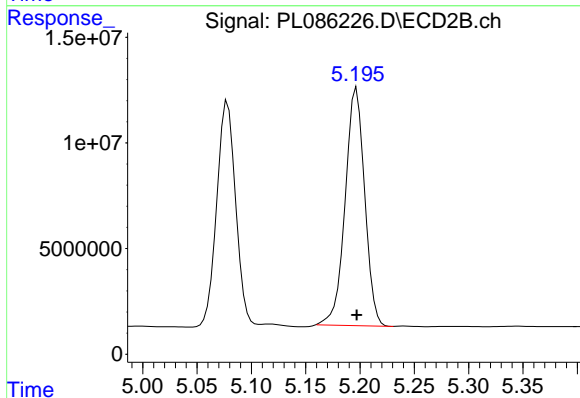


#12 4,4'-DDE
R.T.: 5.078 min
Delta R.T.: 0.000 min
Response: 128411572
Conc: 117.25 ng/ml



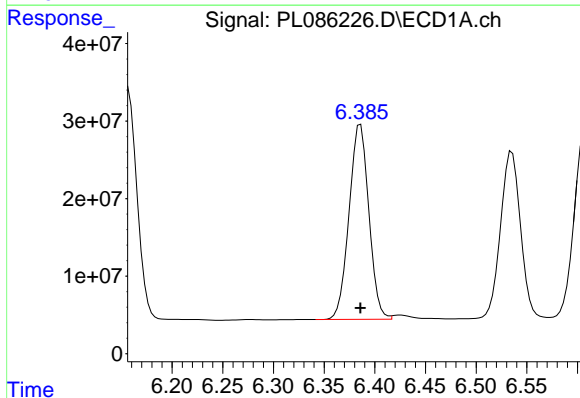
#13 Dieldrin

R.T.: 6.157 min
 Delta R.T.: 0.000 min
 Response: 400706882
 Conc: 114.03 ng/ml



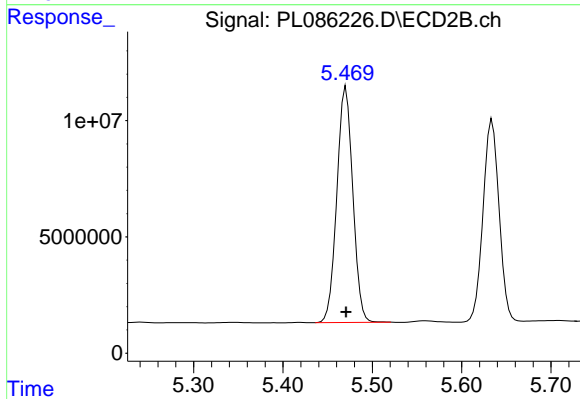
#13 Dieldrin

R.T.: 5.197 min
 Delta R.T.: 0.000 min
 Response: 140745708
 Conc: 116.06 ng/ml



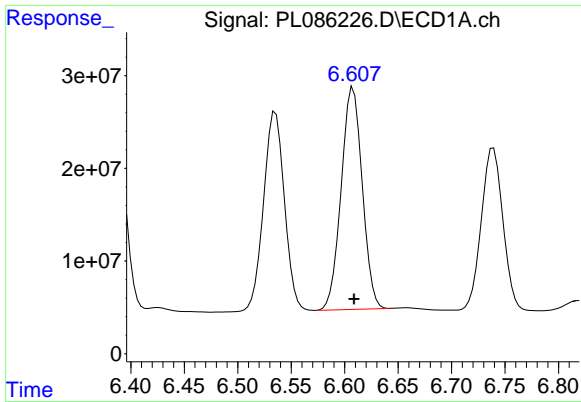
#14 Endrin

R.T.: 6.386 min
 Delta R.T.: 0.000 min
 Response: 341316081
 Conc: 116.38 ng/ml

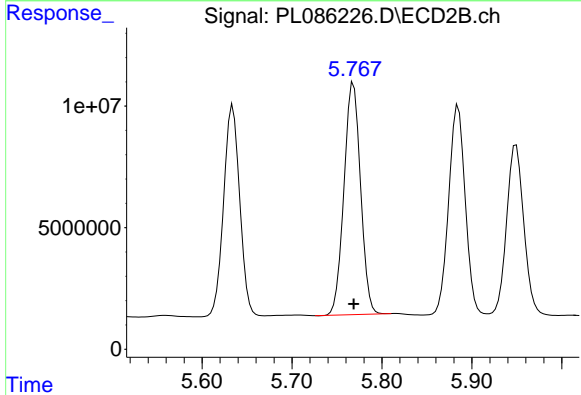


#14 Endrin

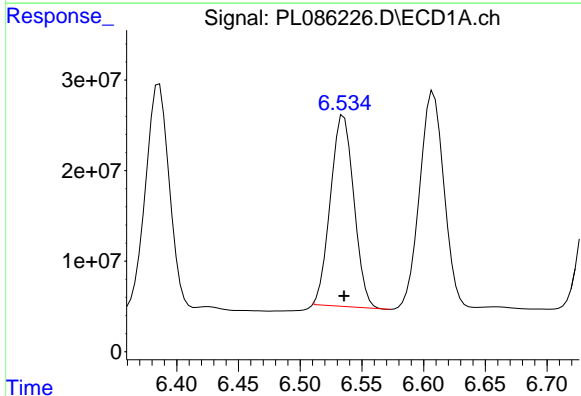
R.T.: 5.471 min
 Delta R.T.: 0.000 min
 Response: 125563794
 Conc: 121.90 ng/ml



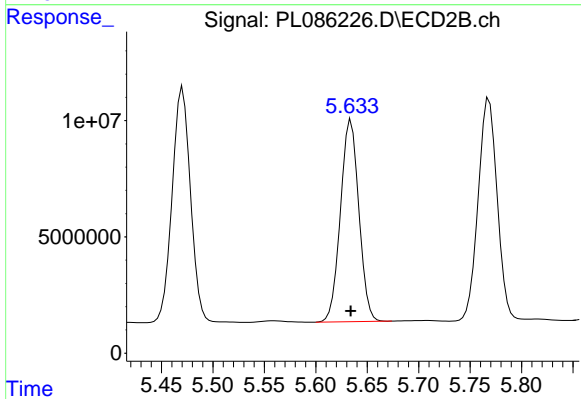
#15 Endosulfan II
 R.T.: 6.608 min
 Delta R.T.: 0.000 min
 Response: 328896760
 Conc: 105.09 ng/ml



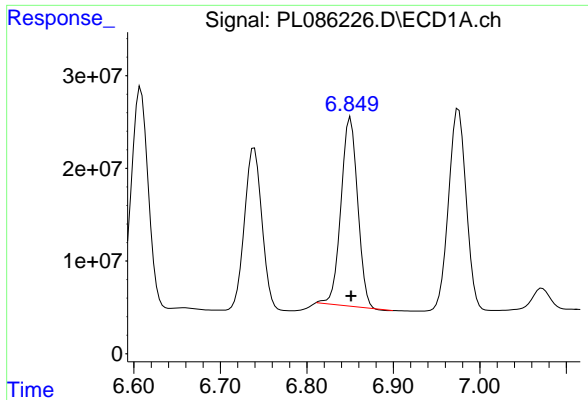
#15 Endosulfan II
 R.T.: 5.768 min
 Delta R.T.: 0.000 min
 Response: 122381110
 Conc: 112.40 ng/ml



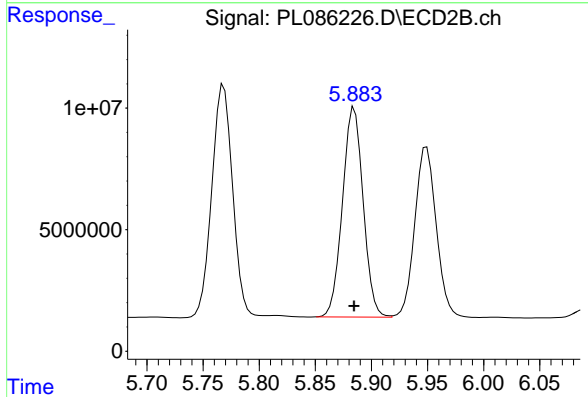
#16 4,4'-DDD
 R.T.: 6.535 min
 Delta R.T.: 0.000 min
 Response: 279206864
 Conc: 117.68 ng/ml



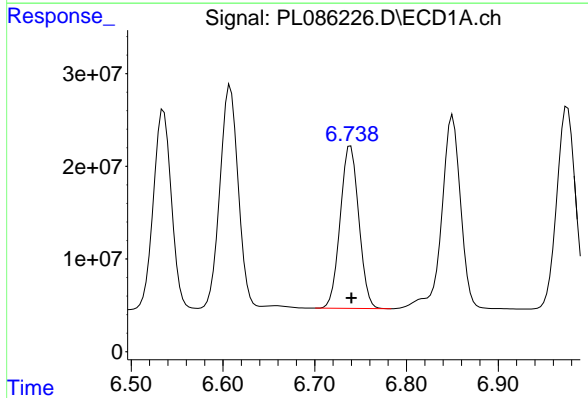
#16 4,4'-DDD
 R.T.: 5.634 min
 Delta R.T.: 0.000 min
 Response: 108182883
 Conc: 123.60 ng/ml



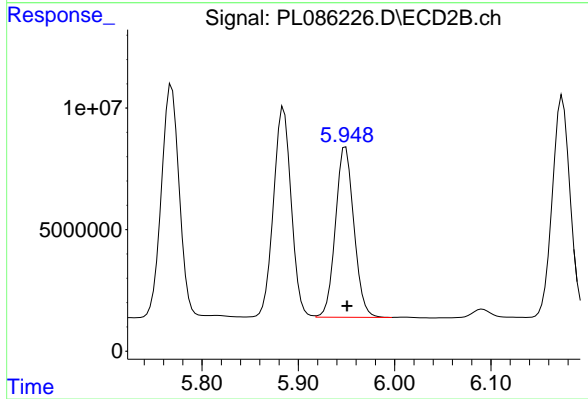
#17 4,4'-DDT
R.T.: 6.850 min
Delta R.T.: 0.000 min
Response: 269077357
Conc: 112.42 ng/ml



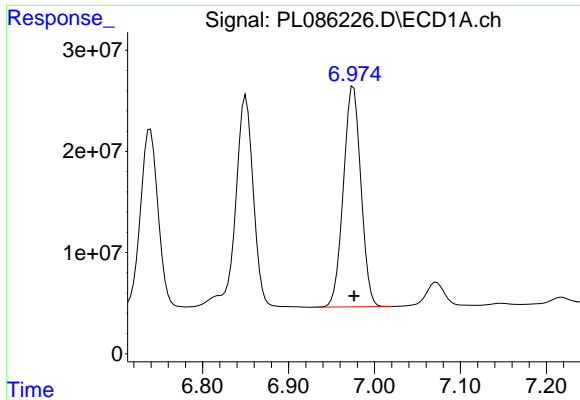
#17 4,4'-DDT
R.T.: 5.885 min
Delta R.T.: 0.000 min
Response: 110601801
Conc: 122.88 ng/ml



#18 Endrin aldehyde
R.T.: 6.739 min
Delta R.T.: 0.000 min
Response: 246622582
Conc: 105.95 ng/ml



#18 Endrin aldehyde
R.T.: 5.949 min
Delta R.T.: -0.001 min
Response: 93299551
Conc: 98.52 ng/ml



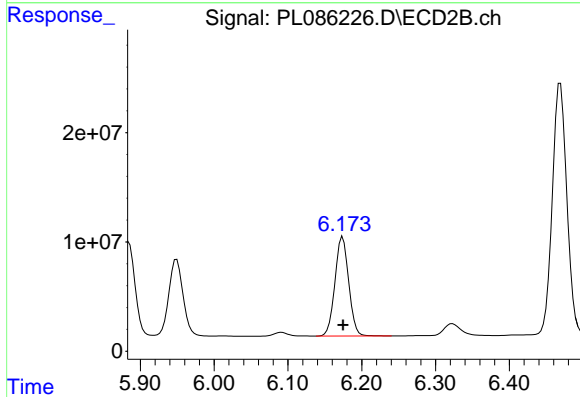
#19 Endosulfan Sulfate

R.T.: 6.975 min

Delta R.T.: 0.000 min

Response: 309426866

Conc: 108.80 ng/ml



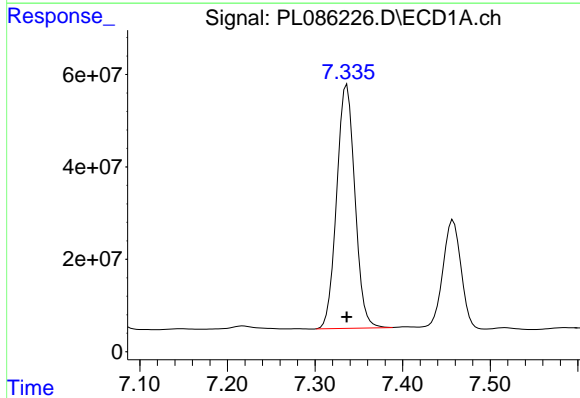
#19 Endosulfan Sulfate

R.T.: 6.174 min

Delta R.T.: 0.000 min

Response: 117663026

Conc: 107.35 ng/ml



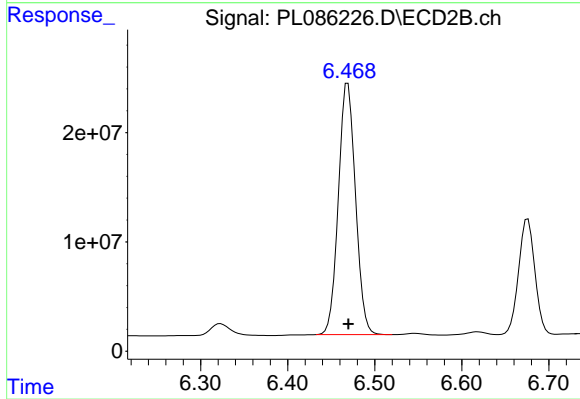
#20 Methoxychlor

R.T.: 7.336 min

Delta R.T.: 0.000 min

Response: 762695645

Conc: 604.77 ng/ml



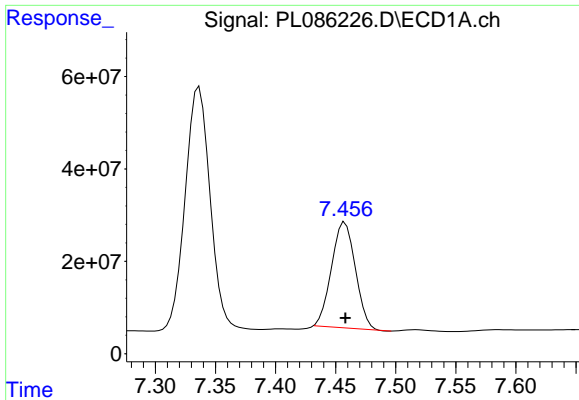
#20 Methoxychlor

R.T.: 6.469 min

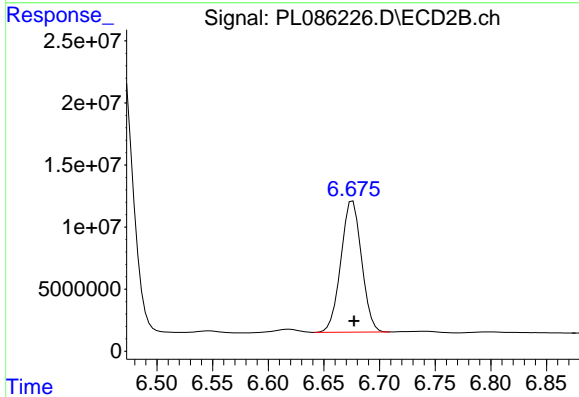
Delta R.T.: 0.000 min

Response: 314880545

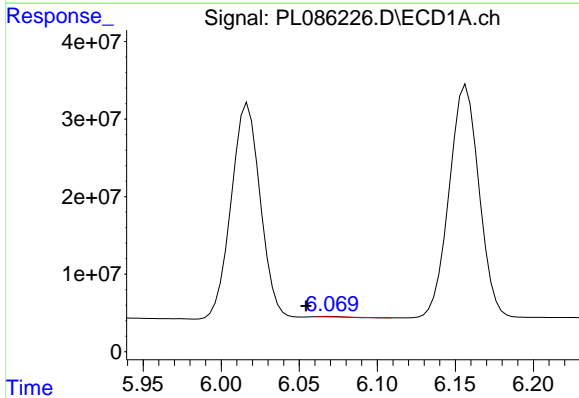
Conc: 548.93 ng/ml



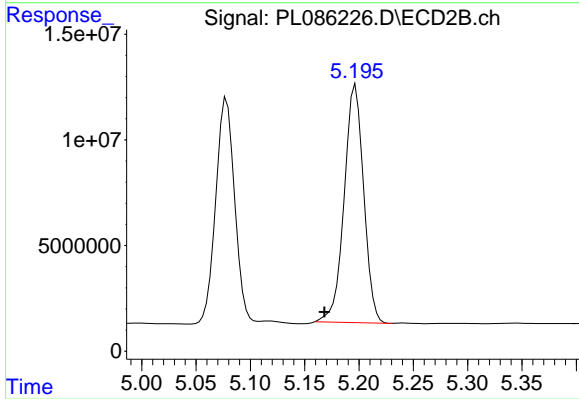
#21 Endrin ketone
 R.T.: 7.458 min
 Delta R.T.: 0.000 min
 Response: 317004308
 Conc: 110.03 ng/ml



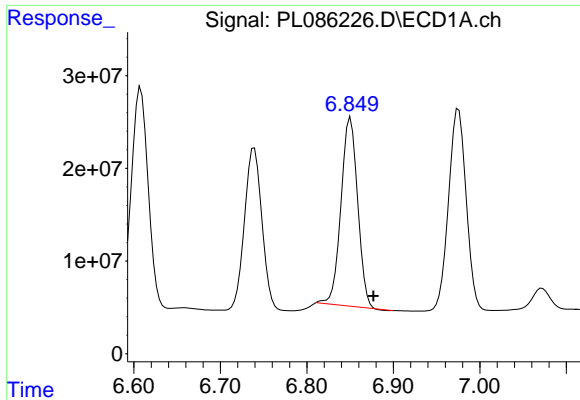
#21 Endrin ketone
 R.T.: 6.676 min
 Delta R.T.: -0.001 min
 Response: 136755093
 Conc: 110.98 ng/ml



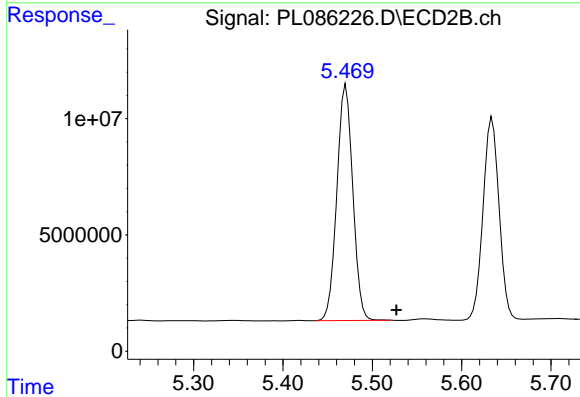
#22 Toxaphene-1
 R.T.: 6.070 min
 Delta R.T.: 0.015 min
 Response: 265886
 Conc: 11.79 ng/ml



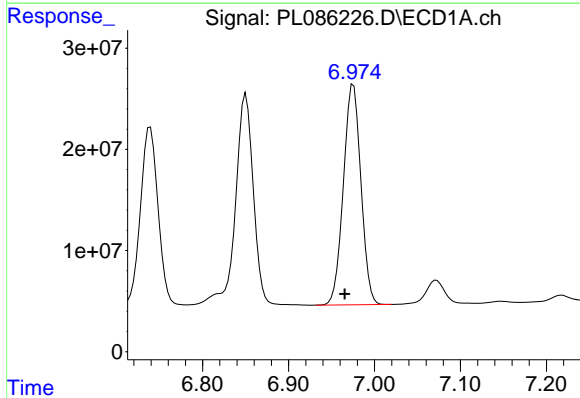
#22 Toxaphene-1
 R.T.: 5.197 min
 Delta R.T.: 0.029 min
 Response: 140745708
 Conc: 24974.07 ng/ml



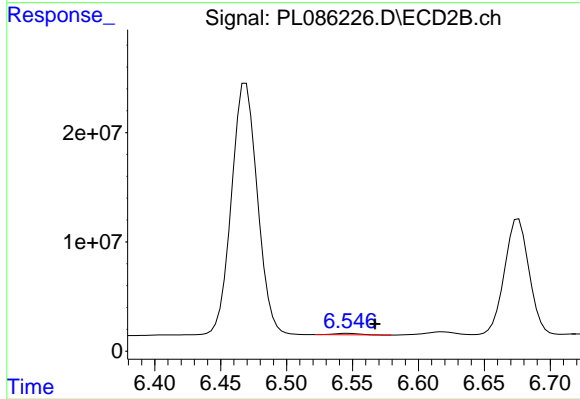
#23 Toxaphene-2
 R.T.: 6.850 min
 Delta R.T.: -0.026 min
 Response: 269077357
 Conc: 3113.74 ng/ml



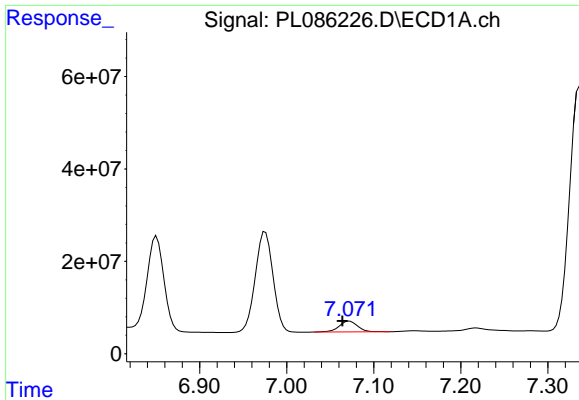
#23 Toxaphene-2
 R.T.: 5.471 min
 Delta R.T.: -0.056 min
 Response: 125563794
 Conc: 18371.57 ng/ml



#24 Toxaphene-3
 R.T.: 6.975 min
 Delta R.T.: 0.010 min
 Response: 309426866
 Conc: 4930.13 ng/ml

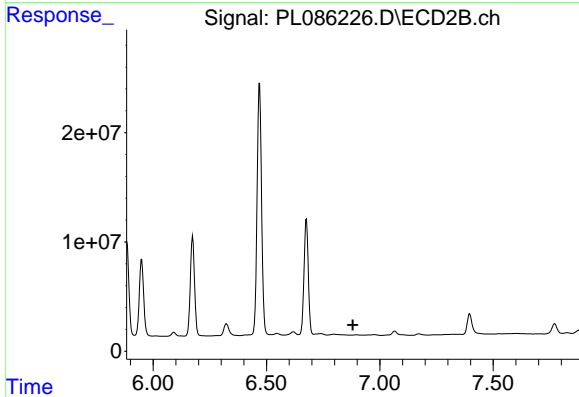


#24 Toxaphene-3
 R.T.: 6.547 min
 Delta R.T.: -0.020 min
 Response: 1798156
 Conc: 48.89 ng/ml



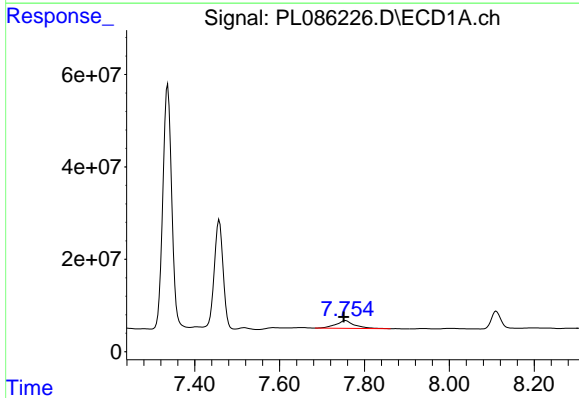
#25 Toxaphene-4

R.T.: 7.072 min
Delta R.T.: 0.008 min
Response: 34057712
Conc: 906.24 ng/ml



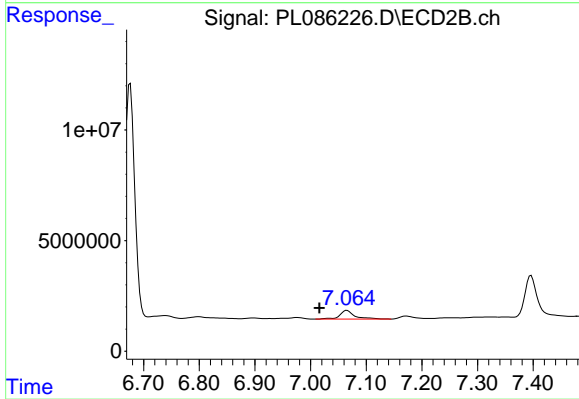
#25 Toxaphene-4

R.T.: 0.000 min
Exp R.T.: 6.881 min
Response: 0
Conc: N.D.



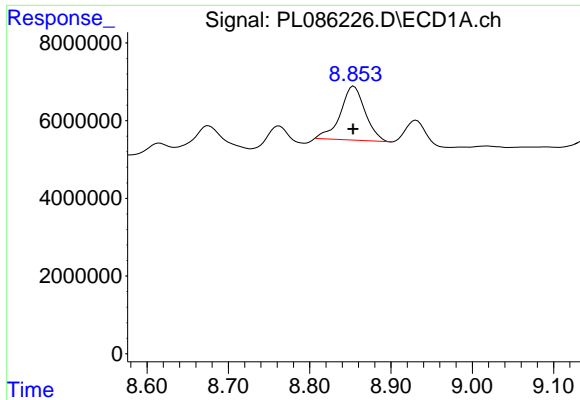
#26 Toxaphene-5

R.T.: 7.755 min
Delta R.T.: 0.005 min
Response: 50823513
Conc: 1151.58 ng/ml



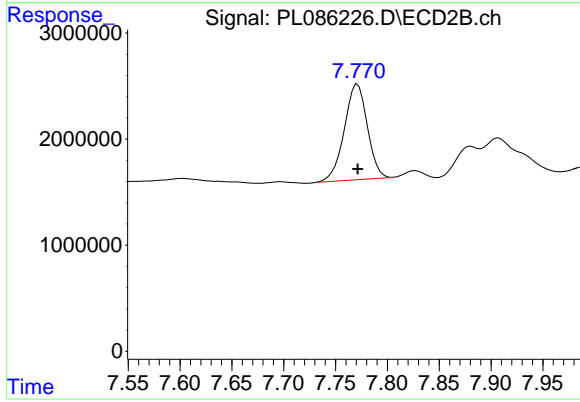
#26 Toxaphene-5

R.T.: 7.065 min
Delta R.T.: 0.049 min
Response: 7310387
Conc: 549.41 ng/ml



#27 Decachlorobiphenyl

R.T.: 8.854 min
Delta R.T.: 0.001 min
Response: 29399429
Conc: 11.80 ng/ml



#27 Decachlorobiphenyl

R.T.: 7.771 min
Delta R.T.: 0.000 min
Response: 13914445
Conc: 12.12 ng/ml