

Data Path : Z:\pestpcbsrv\HPCHEM1\ECD_L\Data\PL102820\
 Data File : PL062672.D
 Signal(s) : Signal #1: ECD1A.ch Signal #2: ECD2B.ch
 Acq On : 28 Oct 2020 20:42
 Operator : DD\AJ
 Sample : L4527-02
 Misc :
 ALS Vial : 38 Sample Multiplier: 1

Instrument :
 ECD_L
 ClientSampled :

Integration File signal 1: autoint1.e
 Integration File signal 2: autoint2.e
 Quant Time: Oct 29 06:36:53 2020
 Quant Method : Z:\pestpcbsrv\HPCHEM1\ECD_L\methods\PL102120.M
 Quant Title : GC Extractables
 QLast Update : Thu Oct 22 04:25:31 2020
 Response via : Initial Calibration
 Integrator: ChemStation

Volume Inj. : 1 µl
 Signal #1 Phase : ZB-MR2 Signal #2 Phase: ZB-MR1
 Signal #1 Info : 30M x 0.32mm x0.2 Signal #2 Info : 30M x 0.32mm x0.5µm

Compound	RT#1	RT#2	Resp#1	Resp#2	ng/ml	ng/ml

System Monitoring Compounds						
1) SA Tetrachlo...	3.413	3.952	33069133	47334727	19.225	16.107
28) SA Decachlor...	8.128	8.991	33726592	47475667	21.023	22.684
Target Compounds						
2) A alpha-BHC	0.000	4.309f	0	5708404	N.D.	1.285 #
4) MA Heptachlor	4.440f	0.000	445862	0	0.208	N.D. #
5) MB Aldrin	4.640f	5.432	350578	4708440	0.184	1.301 #
7) B delta-BHC	4.590f	0.000	522698	0	0.241	N.D. #
8) B Heptachlo...	5.116	5.811	904644	2703706	0.496	0.835 #
9) A Endosulfan I	0.000	6.159	0	4223885	N.D.	1.339 #
10) B gamma-Chl...	0.000	6.035	0	4877002	N.D.	1.449 #
11) B alpha-Chl...	5.389	6.129	1960863	1184942	1.085	0.352 #
13) MA Dieldrin	5.654f	6.455f	1286511	5961222	0.728	1.862 #
14) MA Endrin	5.926	0.000	2512146	0	1.510	N.D. #
15) B Endosulfa...	6.229f	6.859	1466060	2800346	0.889	0.980
16) A 4,4'-DDD	6.076	0.000	582347	0	0.412	N.D. #
17) MA 4,4'-DDT	0.000	7.071	0	1874099	N.D.	0.835 #
18) B Endrin al...	6.382	6.992f	866739	3210114	0.597	1.408 #
20) A Methoxychlor	0.000	7.502f	0	11383342	N.D.	9.214 #
21) B Endrin ke...	7.076	0.000	1434061	0	0.795	N.D. #
23) Chlordane-1	4.278	4.913f	1001010	3223005	19.418	32.109 #
24) Chlordane-2	0.000	5.432f	0	4708440	N.D.	43.182 #
25) Chlordane-3	0.000	6.035	0	4877002	N.D.	12.074 #
26) Chlordane-4	5.389	6.129	1960863	1184942	15.053	2.447 #
27) Chlordane-5	6.229f	0.000	1466060	0	30.387	N.D. #

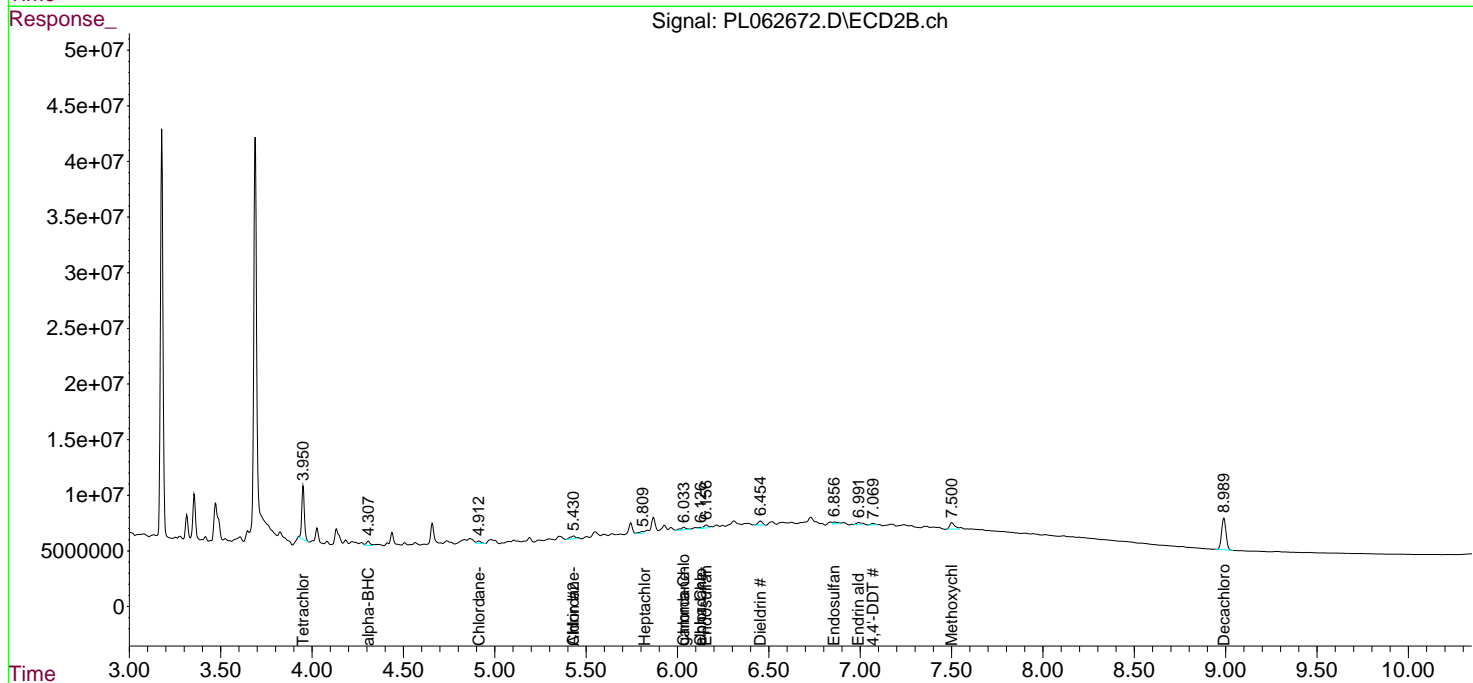
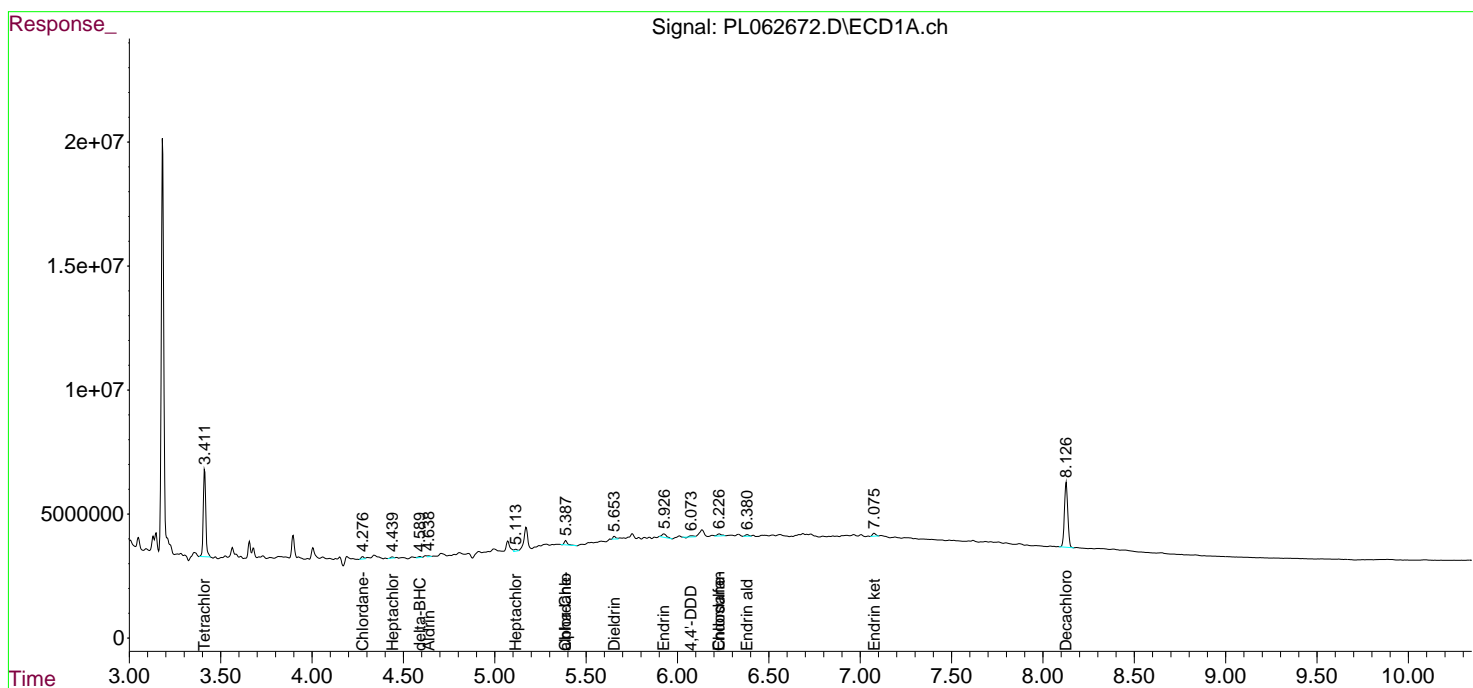
(f)=RT Delta > 1/2 Window (#)=Amounts differ by > 25% (m)=manual int.

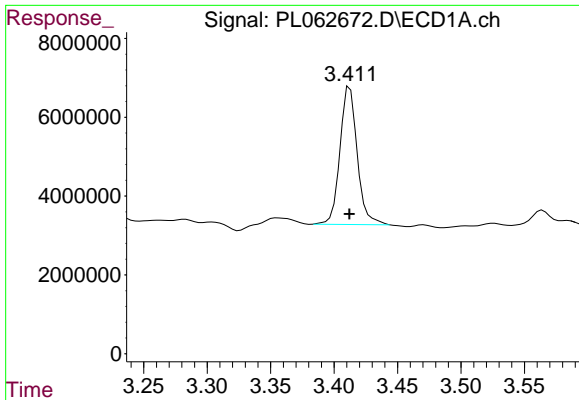
Data Path : Z:\pestpcbsrv\HPCHEM1\ECD_L\Data\PL102820\
 Data File : PL062672.D
 Signal(s) : Signal #1: ECD1A.ch Signal #2: ECD2B.ch
 Acq On : 28 Oct 2020 20:42
 Operator : DD\AJ
 Sample : L4527-02
 Misc :
 ALS Vial : 38 Sample Multiplier: 1

Instrument :
 ECD_L
 ClientSampled :

Integration File signal 1: autoint1.e
 Integration File signal 2: autoint2.e
 Quant Time: Oct 29 06:36:53 2020
 Quant Method : Z:\pestpcbsrv\HPCHEM1\ECD_L\methods\PL102120.M
 Quant Title : GC Extractables
 QLast Update : Thu Oct 22 04:25:31 2020
 Response via : Initial Calibration
 Integrator: ChemStation

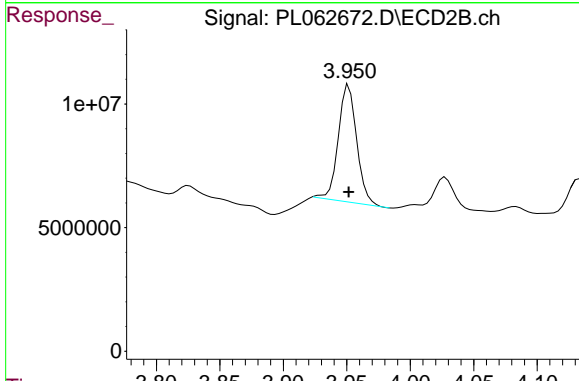
Volume Inj. : 1 µl
 Signal #1 Phase : ZB-MR2 Signal #2 Phase: ZB-MR1
 Signal #1 Info : 30M x 0.32mm x0.2 Signal #2 Info : 30M x 0.32mm x0.5µm



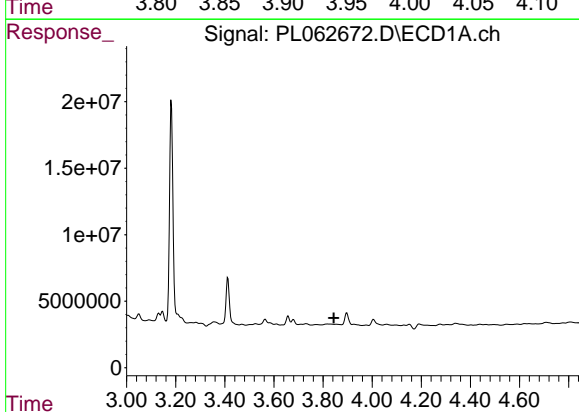


#1 Tetrachloro-m-xylene
 R.T.: 3.413 min
 Delta R.T.: 0.000 min
 Response: 33069133
 Conc: 19.23 ng/ml

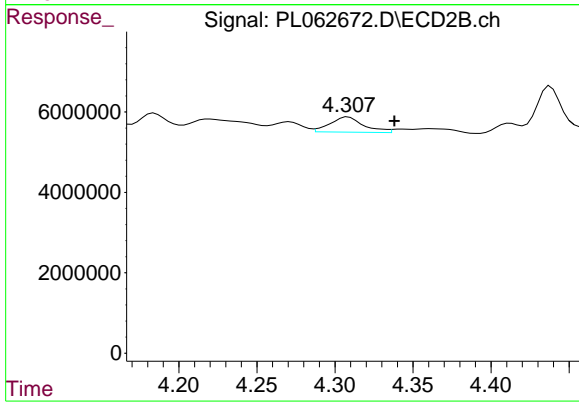
Instrument :
 ECD_L
 ClientSampled :



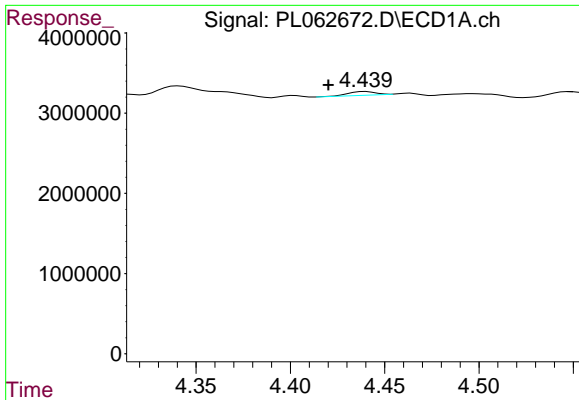
#1 Tetrachloro-m-xylene
 R.T.: 3.952 min
 Delta R.T.: 0.000 min
 Response: 47334727
 Conc: 16.11 ng/ml



#2 alpha-BHC
 R.T.: 0.000 min
 Exp R.T. : 3.844 min
 Response: 0
 Conc: N.D.



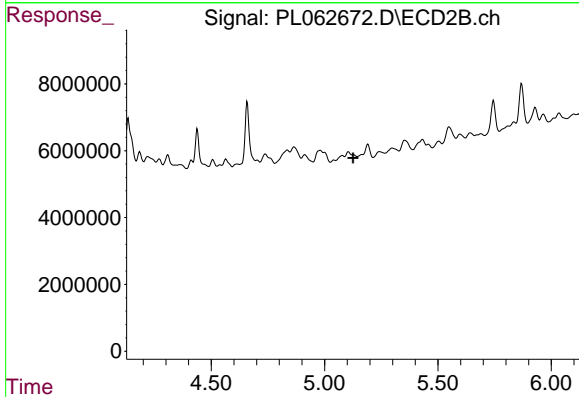
#2 alpha-BHC
 R.T.: 4.309 min
 Delta R.T.: -0.030 min
 Response: 5708404
 Conc: 1.28 ng/ml



#4 Heptachlor

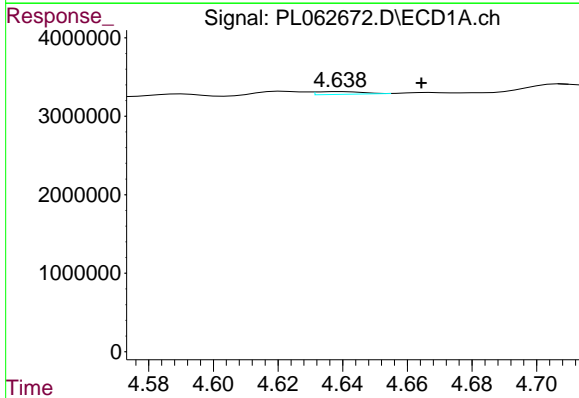
R.T.: 4.440 min
 Delta R.T.: 0.020 min
 Response: 445862
 Conc: 0.21 ng/ml

Instrument :
 ECD_L
 ClientSampleId :



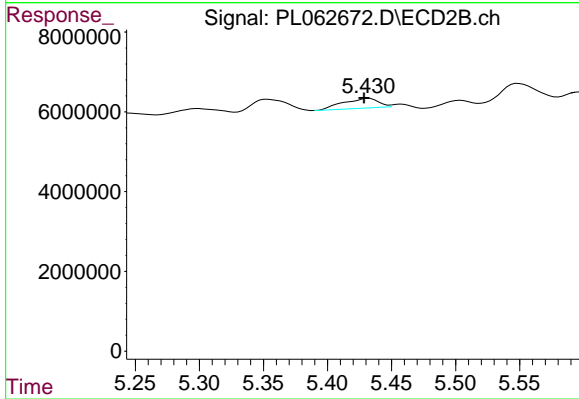
#4 Heptachlor

R.T.: 0.000 min
 Exp R.T. : 5.126 min
 Response: 0
 Conc: N.D.



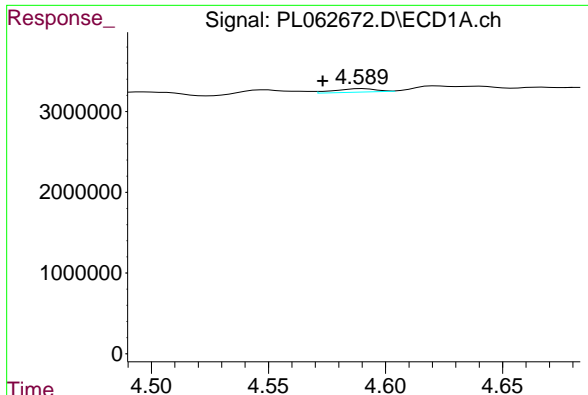
#5 Aldrin

R.T.: 4.640 min
 Delta R.T.: -0.025 min
 Response: 350578
 Conc: 0.18 ng/ml



#5 Aldrin

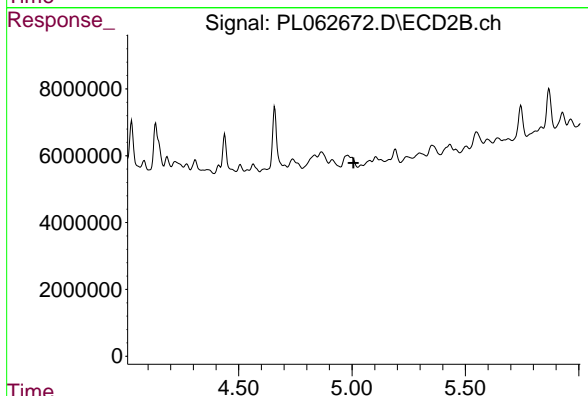
R.T.: 5.432 min
 Delta R.T.: 0.004 min
 Response: 4708440
 Conc: 1.30 ng/ml



#7 delta-BHC

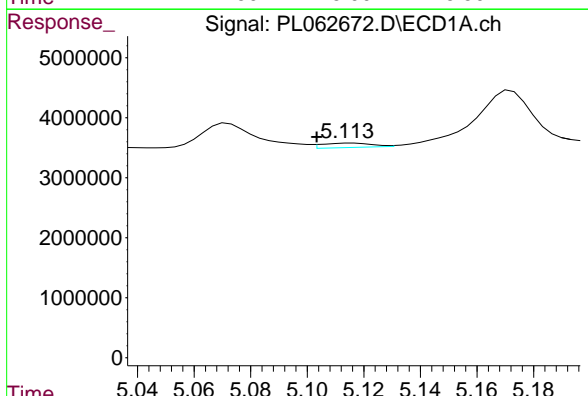
R.T.: 4.590 min
 Delta R.T.: 0.017 min
 Response: 522698
 Conc: 0.24 ng/ml

Instrument :
 ECD_L
 ClientSampleId :



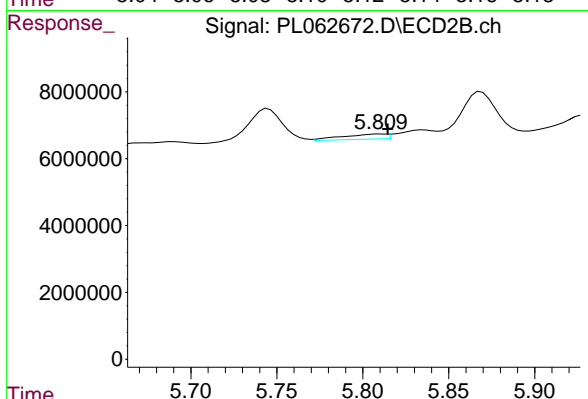
#7 delta-BHC

R.T.: 0.000 min
 Exp R.T. : 5.007 min
 Response: 0
 Conc: N.D.



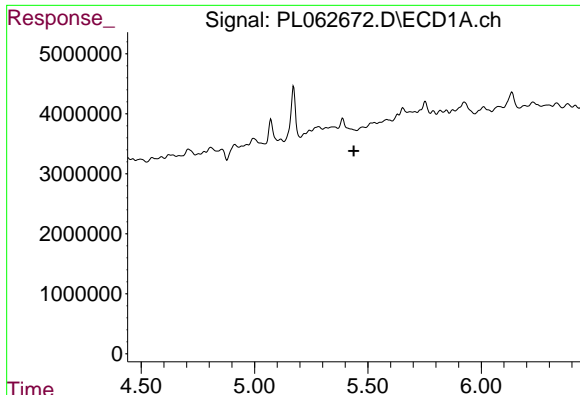
#8 Heptachlor epoxide

R.T.: 5.116 min
 Delta R.T.: 0.013 min
 Response: 904644
 Conc: 0.50 ng/ml



#8 Heptachlor epoxide

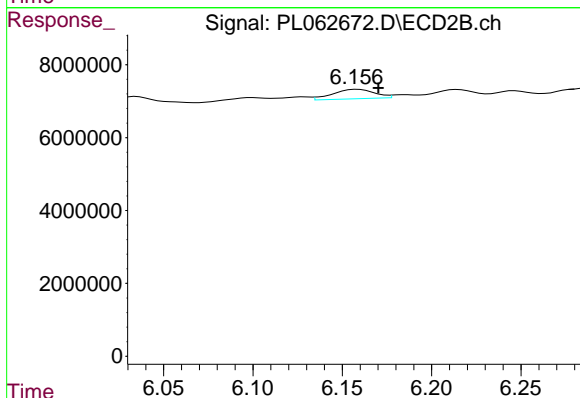
R.T.: 5.811 min
 Delta R.T.: -0.004 min
 Response: 2703706
 Conc: 0.83 ng/ml



#9 Endosulfan I

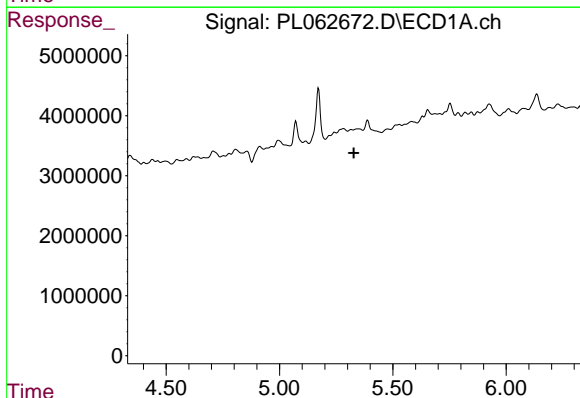
R.T.: 0.000 min
 Exp R.T. : 5.438 min
 Response: 0
 Conc: N.D.

Instrument :
 ECD_L
 ClientSampleId :



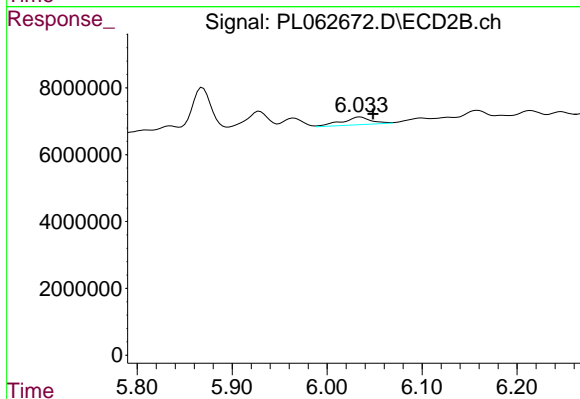
#9 Endosulfan I

R.T.: 6.159 min
 Delta R.T.: -0.012 min
 Response: 4223885
 Conc: 1.34 ng/ml



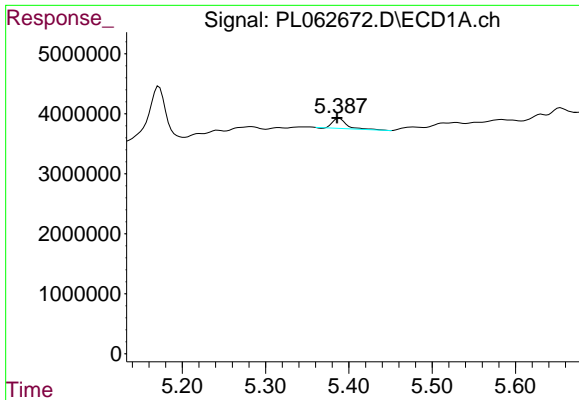
#10 gamma-Chlordane

R.T.: 0.000 min
 Exp R.T. : 5.328 min
 Response: 0
 Conc: N.D.



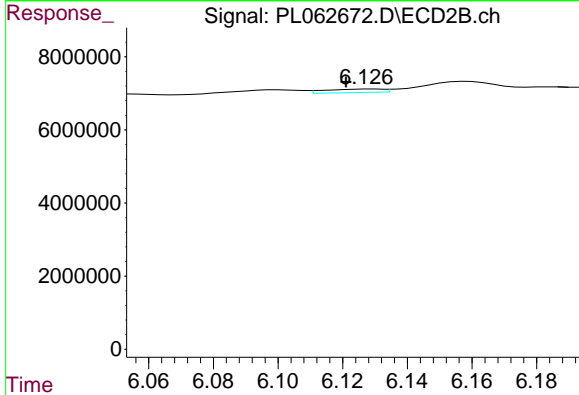
#10 gamma-Chlordane

R.T.: 6.035 min
 Delta R.T.: -0.014 min
 Response: 4877002
 Conc: 1.45 ng/ml

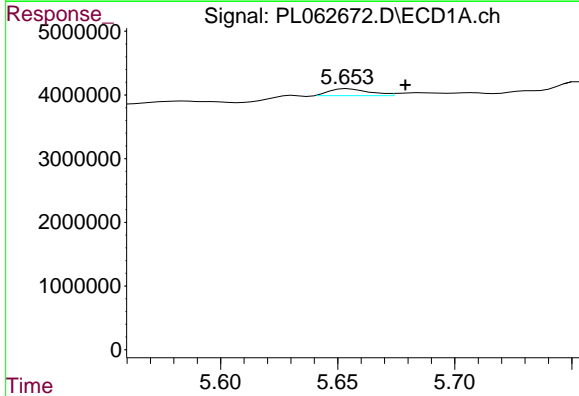


#11 alpha-Chlordane
 R.T.: 5.389 min
 Delta R.T.: 0.003 min
 Response: 1960863
 Conc: 1.08 ng/ml

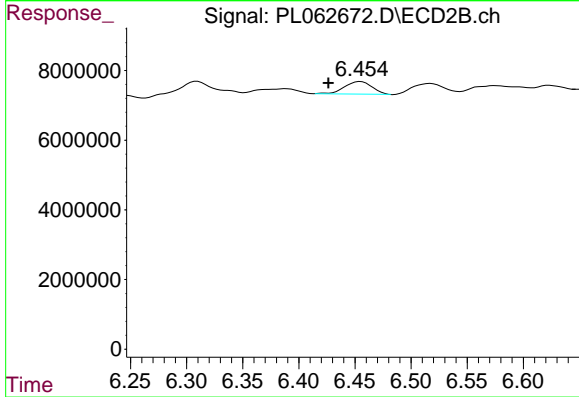
Instrument :
 ECD_L
 ClientSampleId :



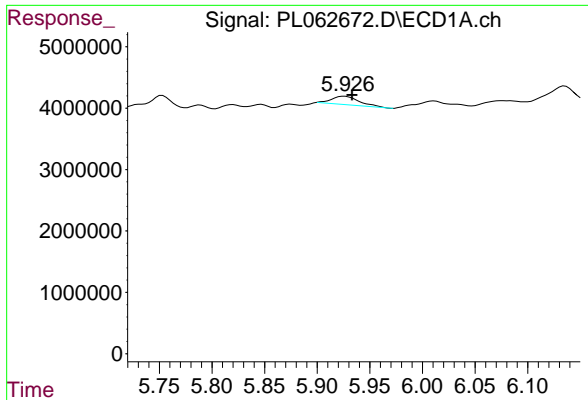
#11 alpha-Chlordane
 R.T.: 6.129 min
 Delta R.T.: 0.008 min
 Response: 1184942
 Conc: 0.35 ng/ml



#13 Dieldrin
 R.T.: 5.654 min
 Delta R.T.: -0.024 min
 Response: 1286511
 Conc: 0.73 ng/ml

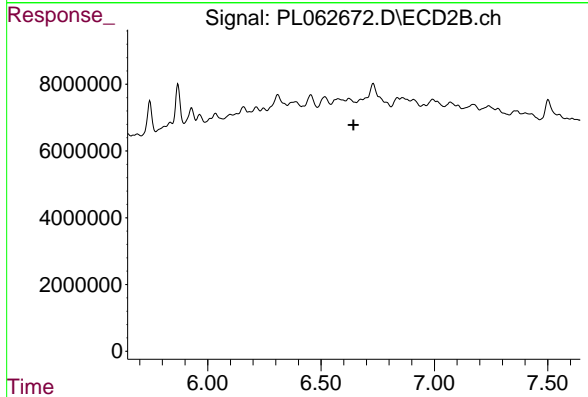


#13 Dieldrin
 R.T.: 6.455 min
 Delta R.T.: 0.029 min
 Response: 5961222
 Conc: 1.86 ng/ml

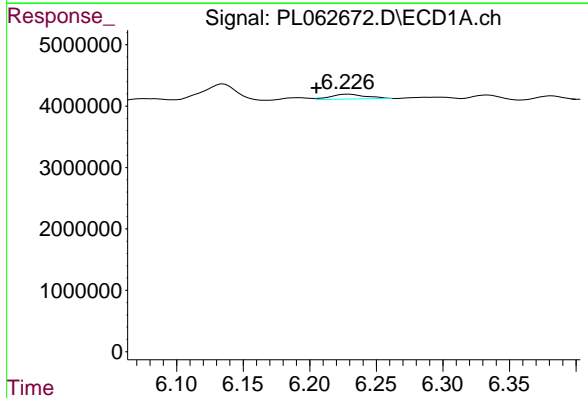


#14 Endrin
 R.T.: 5.926 min
 Delta R.T.: -0.007 min
 Response: 2512146
 Conc: 1.51 ng/ml

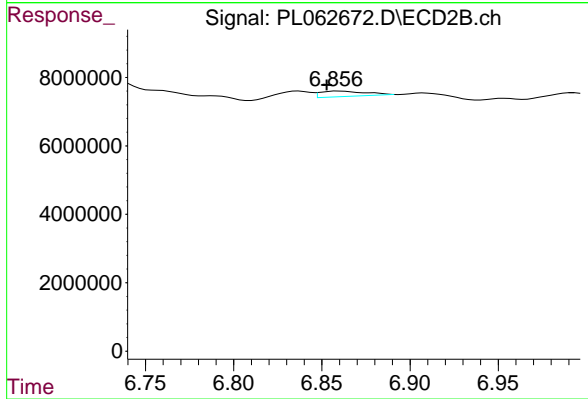
Instrument :
 ECD_L
 ClientSampleId :



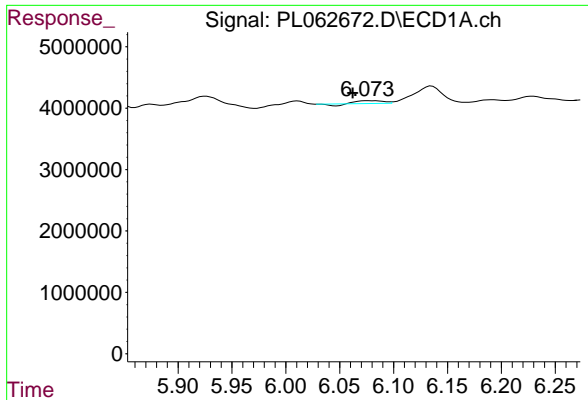
#14 Endrin
 R.T.: 0.000 min
 Exp R.T. : 6.643 min
 Response: 0
 Conc: N.D.



#15 Endosulfan II
 R.T.: 6.229 min
 Delta R.T.: 0.024 min
 Response: 1466060
 Conc: 0.89 ng/ml

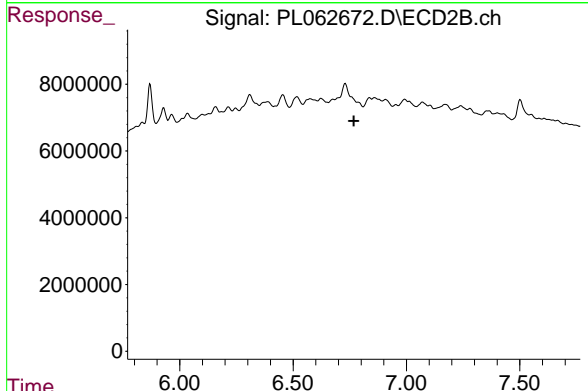


#15 Endosulfan II
 R.T.: 6.859 min
 Delta R.T.: 0.006 min
 Response: 2800346
 Conc: 0.98 ng/ml

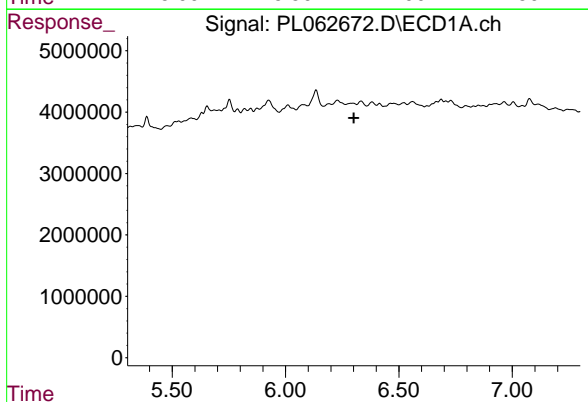


#16 4,4'-DDD
 R.T.: 6.076 min
 Delta R.T.: 0.014 min
 Response: 582347
 Conc: 0.41 ng/ml

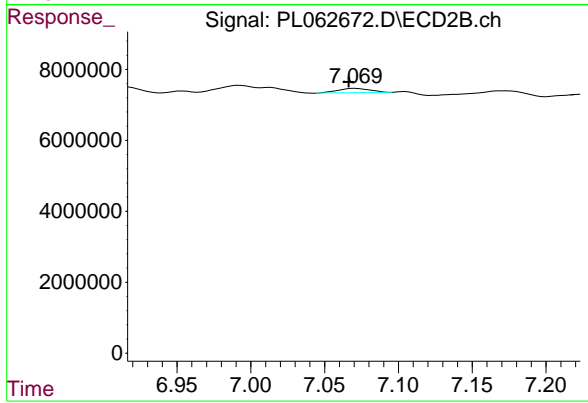
Instrument :
 ECD_L
 ClientSampled :



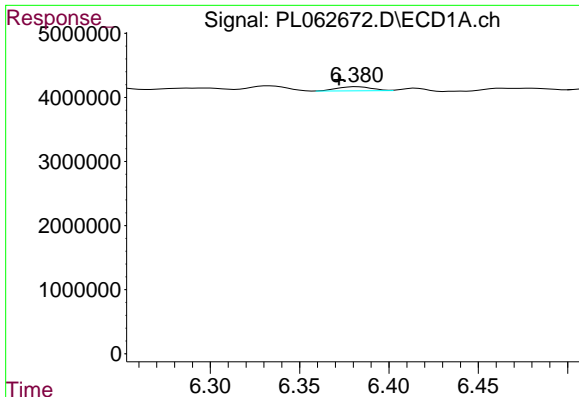
#16 4,4'-DDD
 R.T.: 0.000 min
 Exp R.T. : 6.768 min
 Response: 0
 Conc: N.D.



#17 4,4'-DDT
 R.T.: 0.000 min
 Exp R.T. : 6.301 min
 Response: 0
 Conc: N.D.



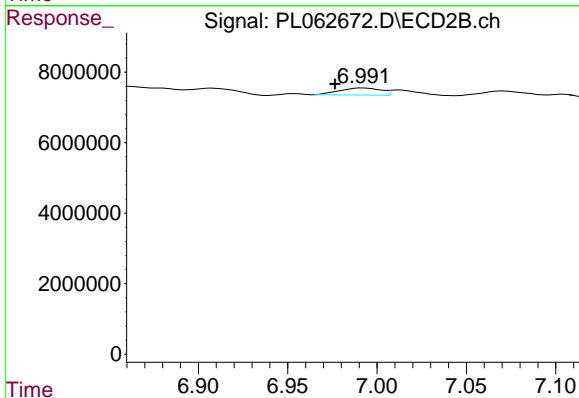
#17 4,4'-DDT
 R.T.: 7.071 min
 Delta R.T.: 0.004 min
 Response: 1874099
 Conc: 0.83 ng/ml



#18 Endrin aldehyde

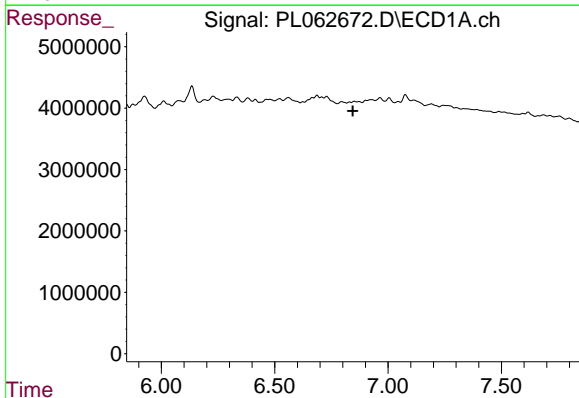
R.T.: 6.382 min
 Delta R.T.: 0.010 min
 Response: 866739
 Conc: 0.60 ng/ml

Instrument :
 ECD_L
 ClientSampleId :



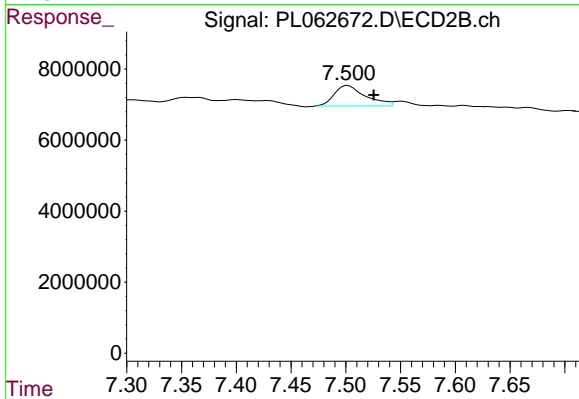
#18 Endrin aldehyde

R.T.: 6.992 min
 Delta R.T.: 0.016 min
 Response: 3210114
 Conc: 1.41 ng/ml



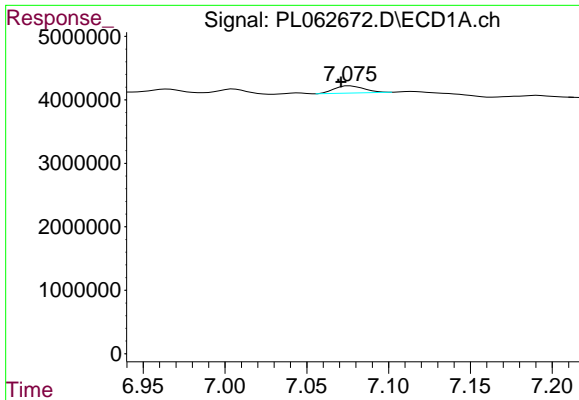
#20 Methoxychlor

R.T.: 0.000 min
 Exp R.T. : 6.845 min
 Response: 0
 Conc: N.D.



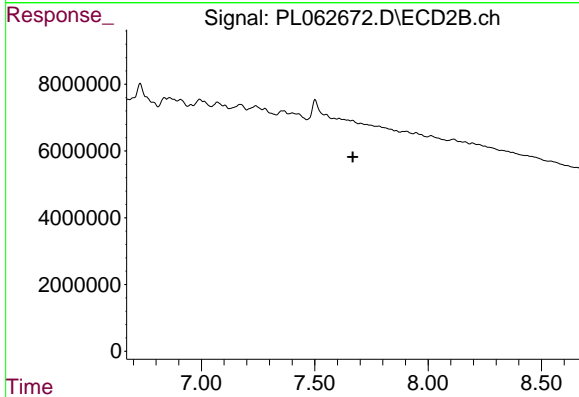
#20 Methoxychlor

R.T.: 7.502 min
 Delta R.T.: -0.024 min
 Response: 11383342
 Conc: 9.21 ng/ml

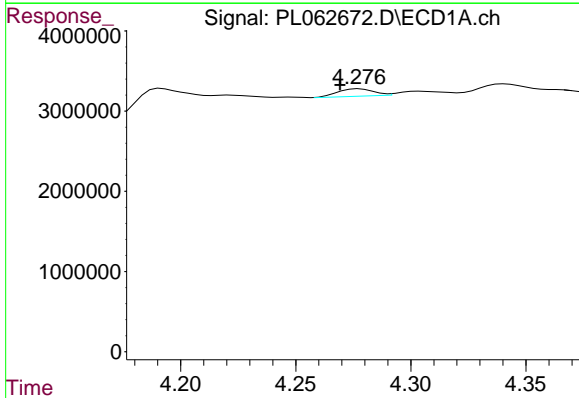


#21 Endrin ketone
 R.T.: 7.076 min
 Delta R.T.: 0.005 min
 Response: 1434061
 Conc: 0.80 ng/ml

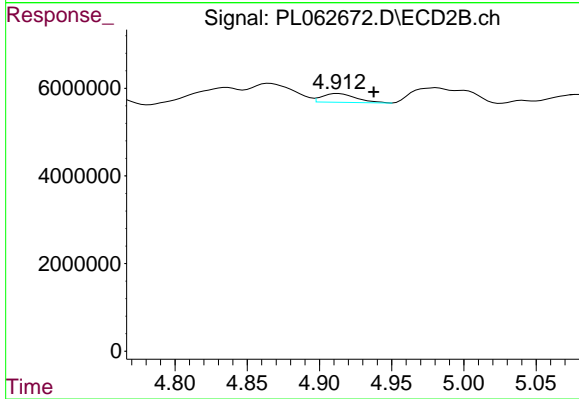
Instrument :
 ECD_L
 ClientSampled :



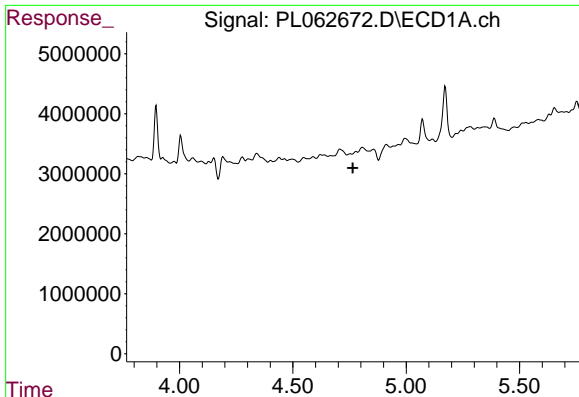
#21 Endrin ketone
 R.T.: 0.000 min
 Exp R.T. : 7.668 min
 Response: 0
 Conc: N.D.



#23 Chlordane-1
 R.T.: 4.278 min
 Delta R.T.: 0.008 min
 Response: 1001010
 Conc: 19.42 ng/ml



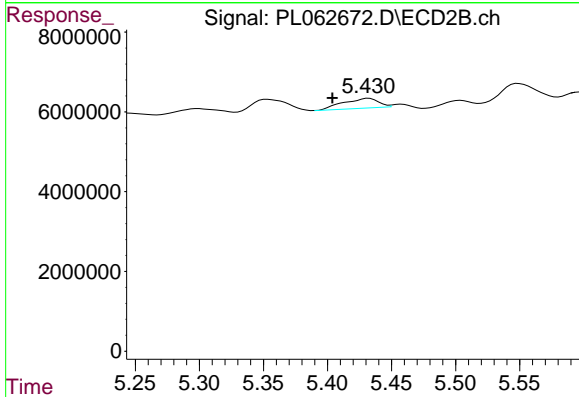
#23 Chlordane-1
 R.T.: 4.913 min
 Delta R.T.: -0.024 min
 Response: 3223005
 Conc: 32.11 ng/ml



#24 Chlordane-2

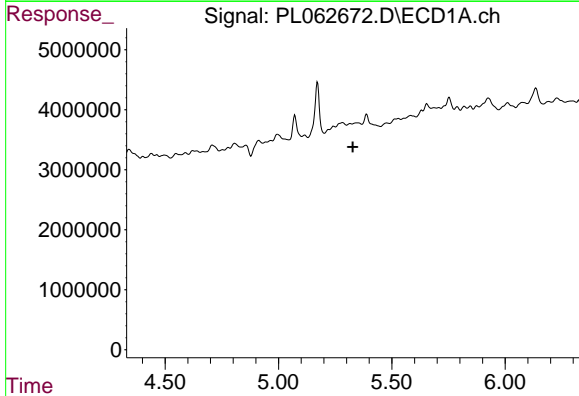
R.T.: 0.000 min
 Exp R.T. : 4.765 min
 Response: 0
 Conc: N.D.

Instrument :
 ECD_L
 ClientSampled :



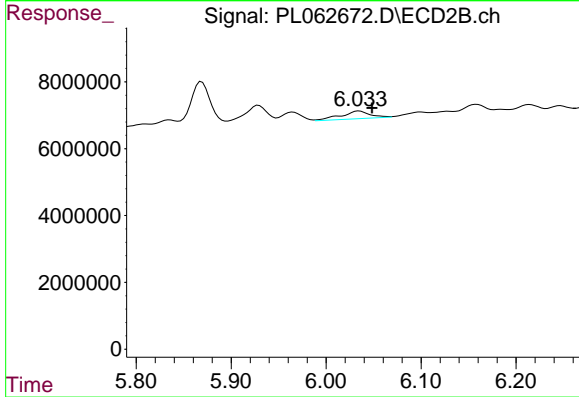
#24 Chlordane-2

R.T.: 5.432 min
 Delta R.T.: 0.029 min
 Response: 4708440
 Conc: 43.18 ng/ml



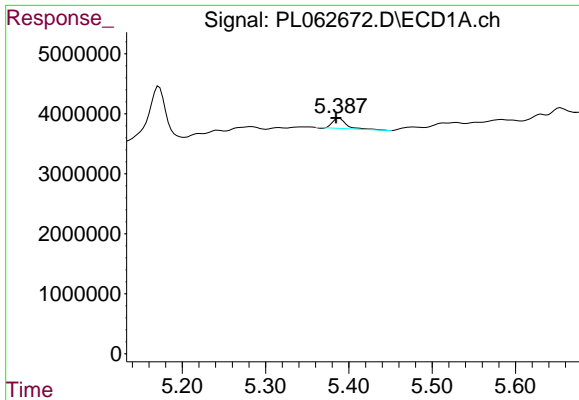
#25 Chlordane-3

R.T.: 0.000 min
 Exp R.T. : 5.328 min
 Response: 0
 Conc: N.D.



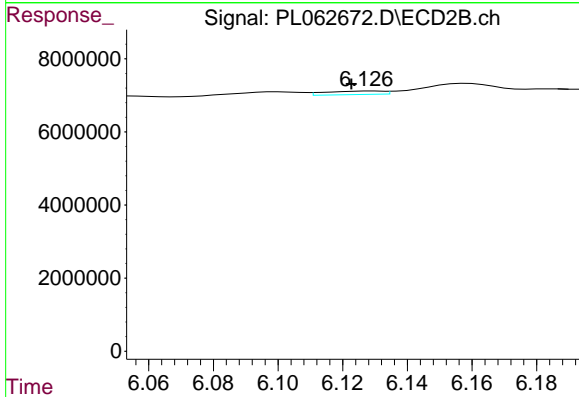
#25 Chlordane-3

R.T.: 6.035 min
 Delta R.T.: -0.013 min
 Response: 4877002
 Conc: 12.07 ng/ml

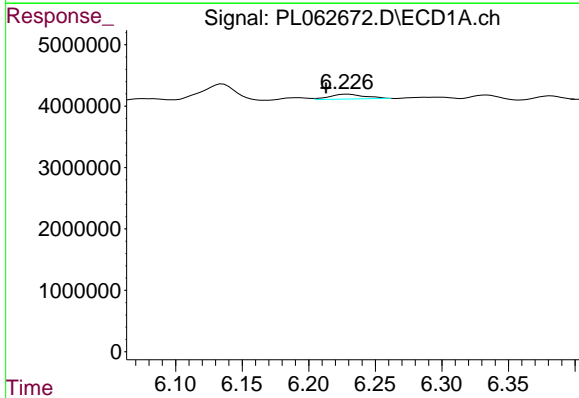


#26 Chlordane-4
 R.T.: 5.389 min
 Delta R.T.: 0.004 min
 Response: 1960863
 Conc: 15.05 ng/ml

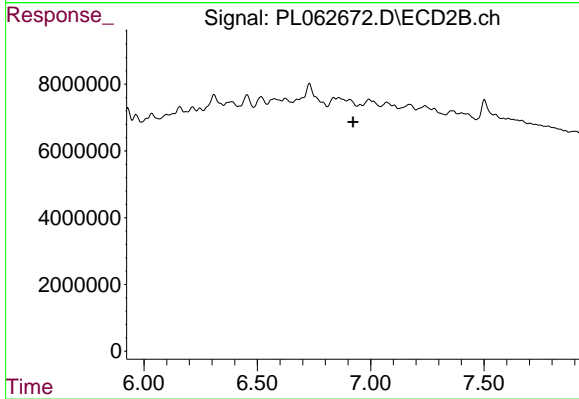
Instrument :
 ECD_L
 ClientSampleId :



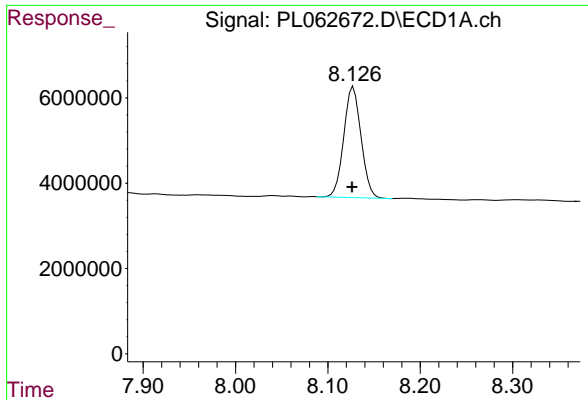
#26 Chlordane-4
 R.T.: 6.129 min
 Delta R.T.: 0.006 min
 Response: 1184942
 Conc: 2.45 ng/ml



#27 Chlordane-5
 R.T.: 6.229 min
 Delta R.T.: 0.016 min
 Response: 1466060
 Conc: 30.39 ng/ml



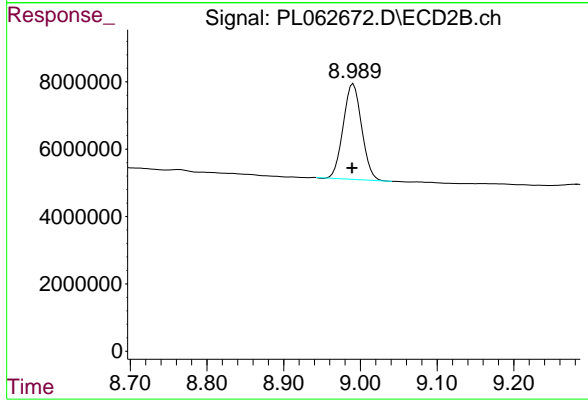
#27 Chlordane-5
 R.T.: 0.000 min
 Exp R.T.: 6.923 min
 Response: 0
 Conc: N.D.



#28 Decachlorobiphenyl

R.T.: 8.128 min
Delta R.T.: 0.001 min
Response: 33726592
Conc: 21.02 ng/ml

Instrument :
ECD_L
ClientSampleId :



#28 Decachlorobiphenyl

R.T.: 8.991 min
Delta R.T.: 0.002 min
Response: 47475667
Conc: 22.68 ng/ml