

Data Path : Z:\pestpcbsrv\HPCHEM1\ECD_L\Data\PL102822\
 Data File : PL078614.D
 Signal(s) : Signal #1: ECD1A.ch Signal #2: ECD2B.ch
 Acq On : 28 Oct 2022 00:24
 Operator : AR\AJ
 Sample : PSTDCCC050
 Misc :
 ALS Vial : 4 Sample Multiplier: 1

Instrument :
 ECD_L
 ClientSampleId :
 PSTDCCC050

Integration File signal 1: autoint1.e
 Integration File signal 2: autoint2.e
 Quant Time: Oct 28 05:31:24 2022
 Quant Method : Z:\pestpcbsrv\HPCHEM1\ECD_L\methods\PL102122.M
 Quant Title : GC Extractables
 QLast Update : Fri Oct 21 07:08:41 2022
 Response via : Initial Calibration
 Integrator: ChemStation

Volume Inj. : 1 µl
 Signal #1 Phase : ZB-MR2 Signal #2 Phase: ZB-MR1
 Signal #1 Info : 30M x 0.32mm x0.2 Signal #2 Info : 30M x 0.32mm x0.5µm

	Compound	RT#1	RT#2	Resp#1	Resp#2	ng/ml	ng/ml

System Monitoring Compounds							
1)	SA Tetrachlo...	3.322	2.571	93999485	116.7E6	49.291	45.726
28)	SA Decachlor...	8.772	7.641	74398360	86603386	49.455	45.723
Target Compounds							
2)	A alpha-BHC	3.783	3.058	146.8E6	182.3E6	51.129	46.154
3)	MA gamma-BHC...	4.115	3.379	136.4E6	167.1E6	51.038	46.505
4)	MA Heptachlor	4.686	3.707	135.3E6	158.5E6	52.105	45.713
5)	MB Aldrin	5.024	3.978	127.9E6	162.6E6	51.651	46.438
6)	B beta-BHC	4.330	3.679	58165277	65621248	50.492	45.734
7)	B delta-BHC	4.571	3.899	125.1E6	166.3E6	54.940	45.671
8)	B Heptachlo...	5.458	4.475	118.1E6	139.0E6	55.605	46.141
9)	A Endosulfan I	5.842	4.838	106.7E6	130.5E6	49.990	45.570
10)	B gamma-Chl...	5.714	4.723	116.2E6	138.9E6	51.486	45.326
11)	B alpha-Chl...	5.790	4.786	114.8E6	135.8E6	49.612	45.556
12)	B 4,4'-DDE	5.973	4.980	100.1E6	126.8E6	50.019	46.564
13)	MA Dieldrin	6.119	5.100	107.7E6	137.7E6	49.943	46.471
14)	MA Endrin	6.350	5.371	91659642	119.9E6	48.297	46.025
15)	B Endosulfa...	6.580	5.667	88000992	109.7E6	46.905	48.174
16)	A 4,4'-DDD	6.498	5.531	82274620	106.4E6	49.354	48.458
17)	MA 4,4'-DDT	6.807	5.778	84376089	103.6E6	47.076	47.747
18)	B Endrin al...	6.711	5.846	70975758	86574031	48.779	46.129
19)	B Endosulfa...	6.944	6.068	89051482	111.1E6	48.399	46.687
20)	A Methoxychlor	7.292	6.355	44605014	54172087	48.437	47.737
21)	B Endrin ke...	7.431	6.564	92841866	125.5E6	49.347	48.542
22)	Mirex	7.887	6.737	71415066	89815066	48.921	45.639

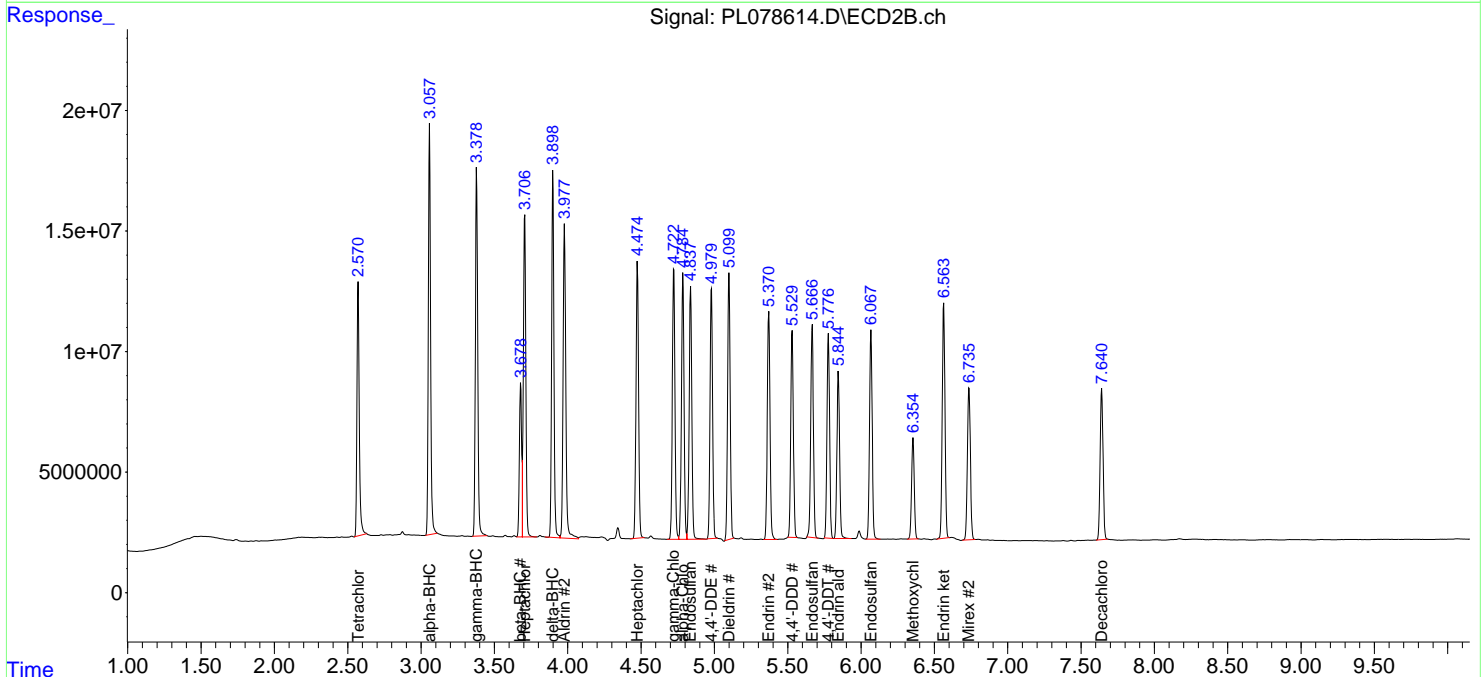
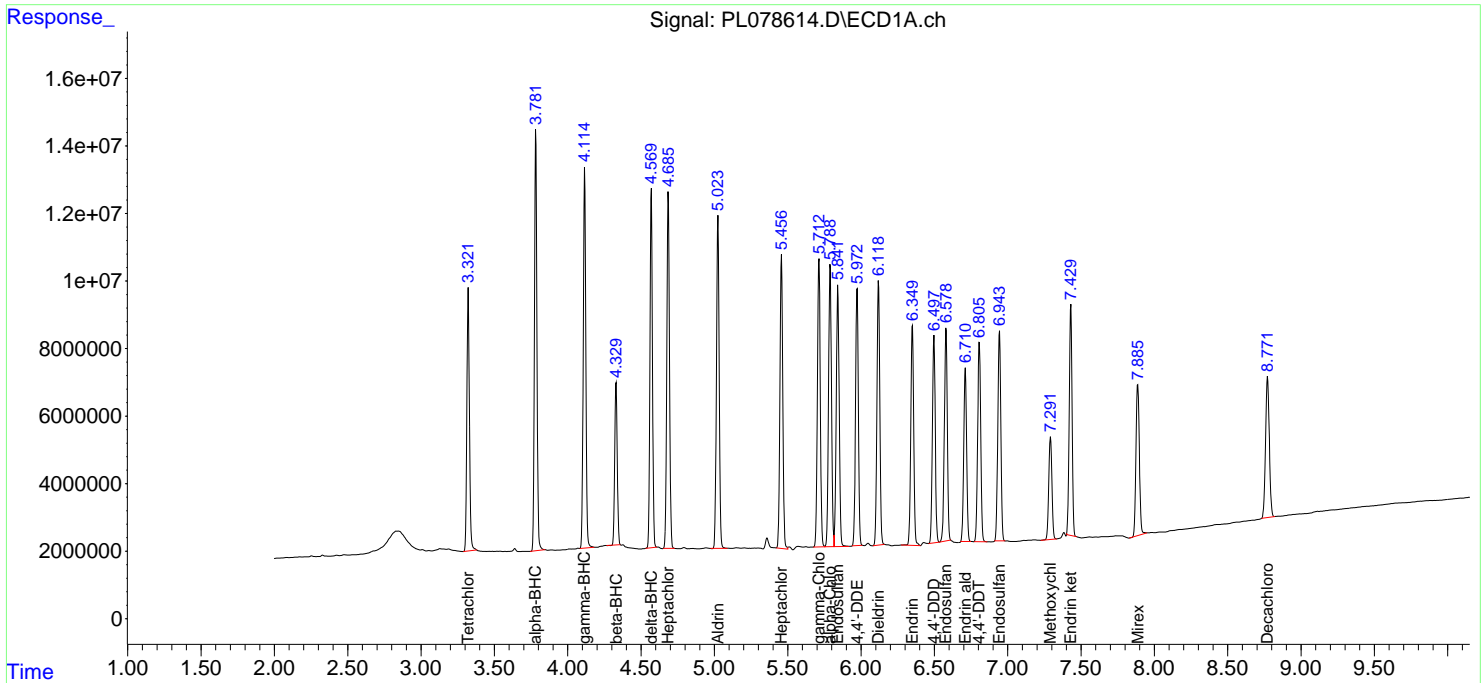
(f)=RT Delta > 1/2 Window (#)=Amounts differ by > 25% (m)=manual int.

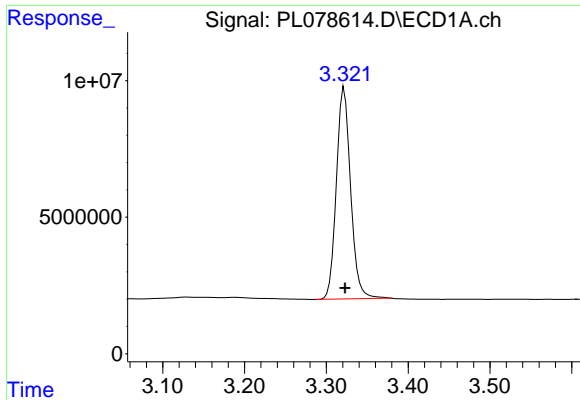
Data Path : Z:\pestpcbsrv\HPCHEM1\ECD_L\Data\PL102822\
 Data File : PL078614.D
 Signal(s) : Signal #1: ECD1A.ch Signal #2: ECD2B.ch
 Acq On : 28 Oct 2022 00:24
 Operator : AR\AJ
 Sample : PSTDCCC050
 Misc :
 ALS Vial : 4 Sample Multiplier: 1

Instrument :
 ECD_L
 ClientSampleId :
 PSTDCCC050

Integration File signal 1: autoint1.e
 Integration File signal 2: autoint2.e
 Quant Time: Oct 28 05:31:24 2022
 Quant Method : Z:\pestpcbsrv\HPCHEM1\ECD_L\methods\PL102122.M
 Quant Title : GC Extractables
 QLast Update : Fri Oct 21 07:08:41 2022
 Response via : Initial Calibration
 Integrator: ChemStation

Volume Inj. : 1 µl
 Signal #1 Phase : ZB-MR2 Signal #2 Phase: ZB-MR1
 Signal #1 Info : 30M x 0.32mm x0.2 Signal #2 Info : 30M x 0.32mm x0.5µm

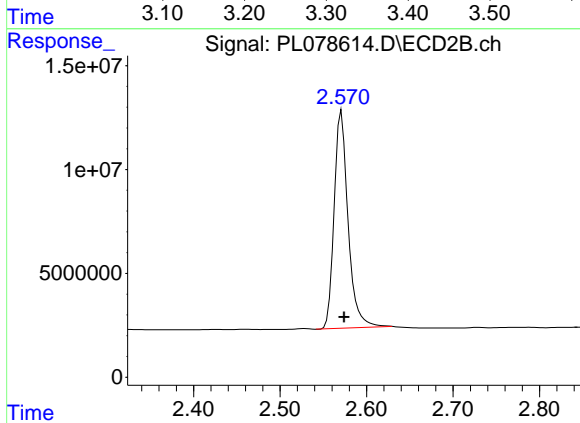




#1 Tetrachloro-m-xylene

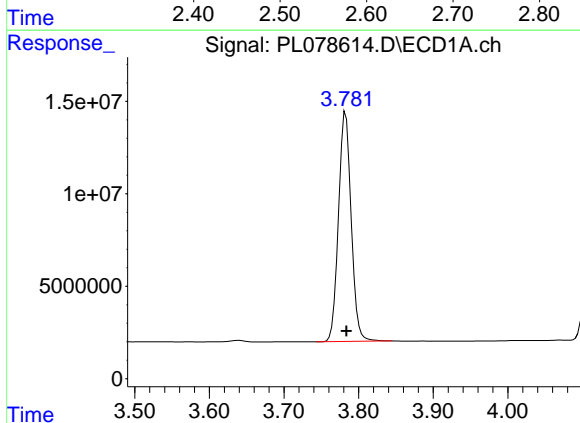
R.T.: 3.322 min
 Delta R.T.: -0.001 min
 Response: 93999485
 Conc: 49.29 ng/ml

Instrument :
 ECD_L
 ClientSampleId :
 PSTDCCC050



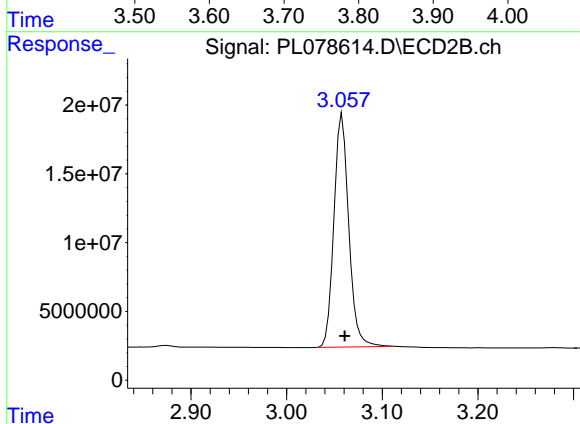
#1 Tetrachloro-m-xylene

R.T.: 2.571 min
 Delta R.T.: -0.003 min
 Response: 116746853
 Conc: 45.73 ng/ml



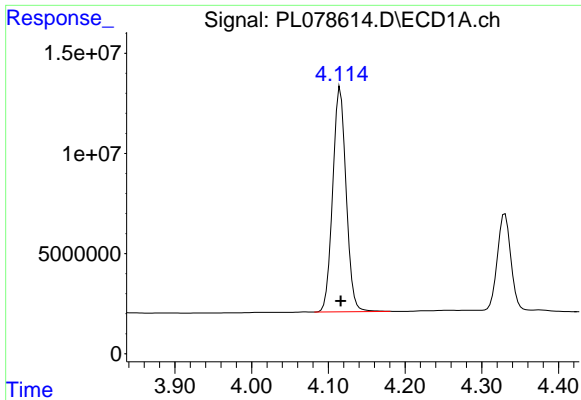
#2 alpha-BHC

R.T.: 3.783 min
 Delta R.T.: -0.001 min
 Response: 146809296
 Conc: 51.13 ng/ml



#2 alpha-BHC

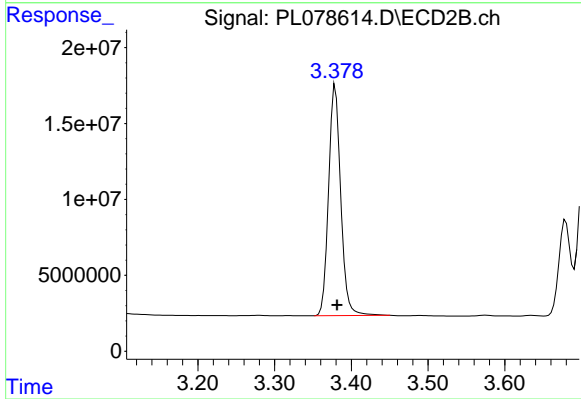
R.T.: 3.058 min
 Delta R.T.: -0.002 min
 Response: 182262540
 Conc: 46.15 ng/ml



#3 gamma-BHC (Lindane)

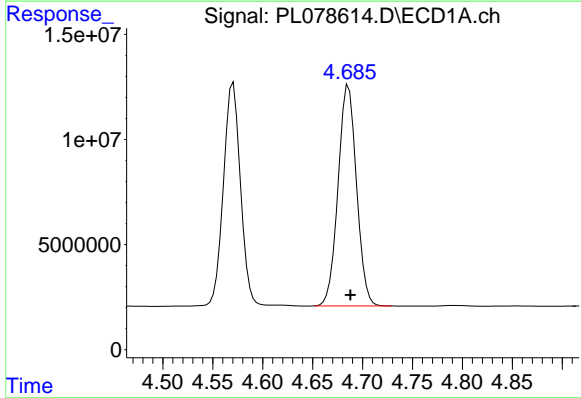
R.T.: 4.115 min
 Delta R.T.: 0.000 min
 Response: 136359484
 Conc: 51.04 ng/ml

Instrument :
 ECD_L
 ClientSampleId :
 PSTDCCC050



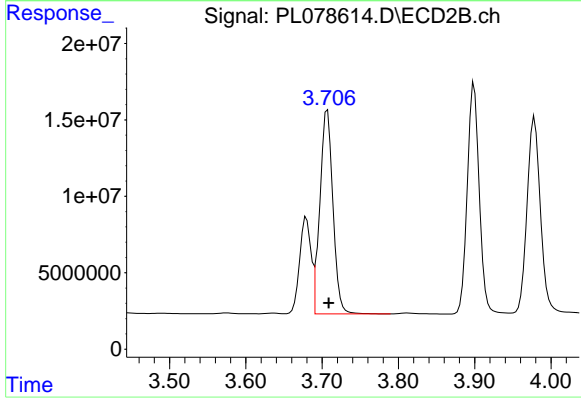
#3 gamma-BHC (Lindane)

R.T.: 3.379 min
 Delta R.T.: -0.002 min
 Response: 167146658
 Conc: 46.50 ng/ml



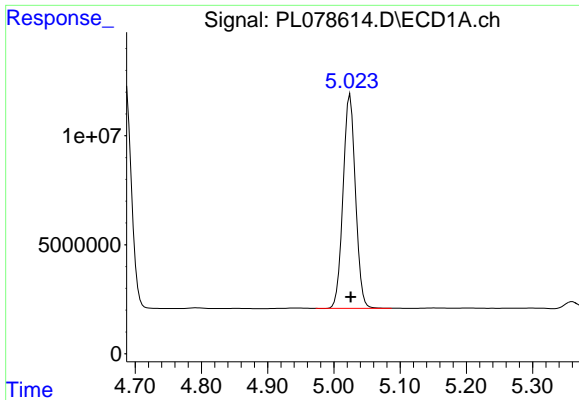
#4 Heptachlor

R.T.: 4.686 min
 Delta R.T.: -0.002 min
 Response: 135265375
 Conc: 52.11 ng/ml



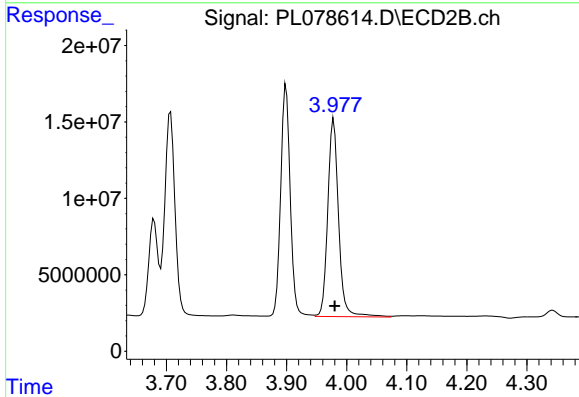
#4 Heptachlor

R.T.: 3.707 min
 Delta R.T.: -0.002 min
 Response: 158524946
 Conc: 45.71 ng/ml

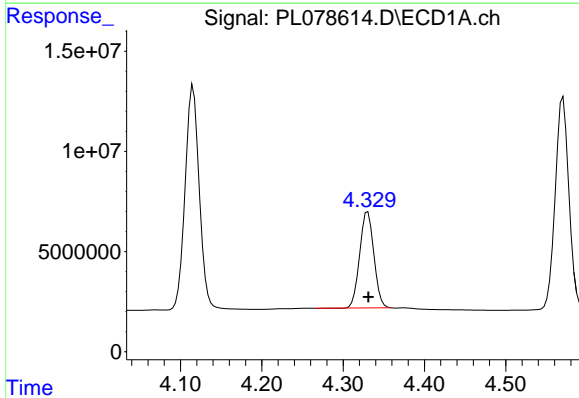


#5 Aldrin
 R.T.: 5.024 min
 Delta R.T.: 0.000 min
 Response: 127925031
 Conc: 51.65 ng/ml

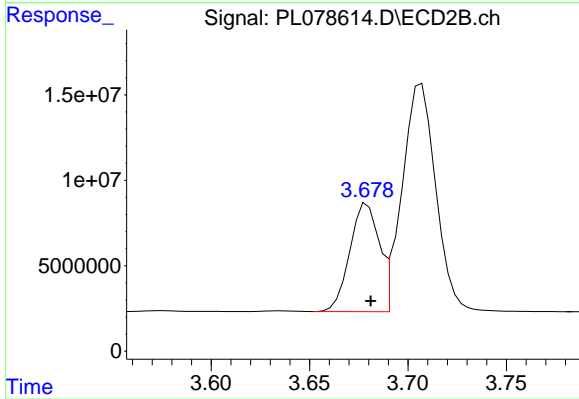
Instrument :
 ECD_L
 ClientSampleId :
 PSTDCCC050



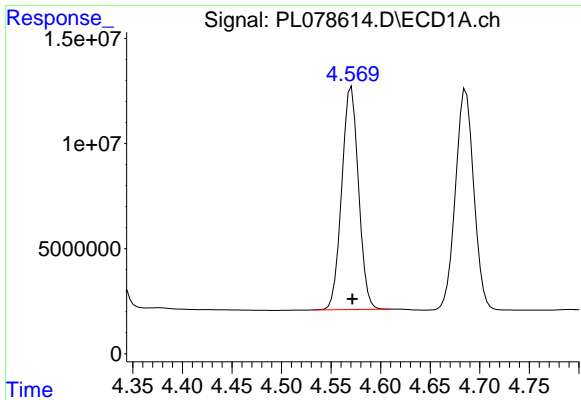
#5 Aldrin
 R.T.: 3.978 min
 Delta R.T.: -0.002 min
 Response: 162612687
 Conc: 46.44 ng/ml



#6 beta-BHC
 R.T.: 4.330 min
 Delta R.T.: 0.000 min
 Response: 58165277
 Conc: 50.49 ng/ml



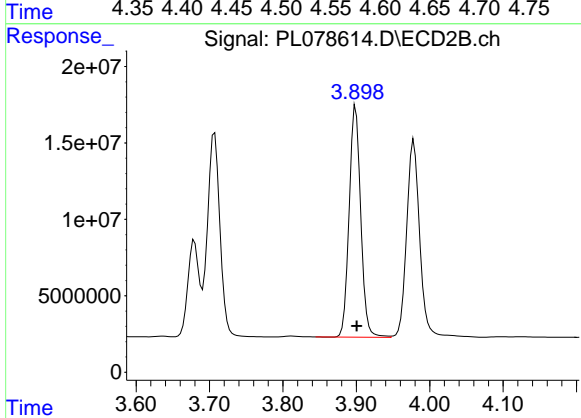
#6 beta-BHC
 R.T.: 3.679 min
 Delta R.T.: -0.002 min
 Response: 65621248
 Conc: 45.73 ng/ml



#7 delta-BHC

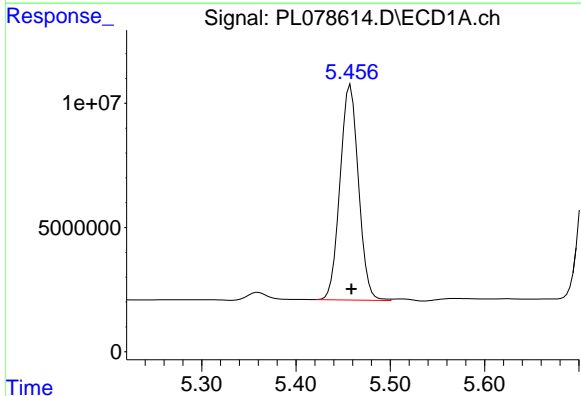
R.T.: 4.571 min
 Delta R.T.: -0.001 min
 Response: 125091430
 Conc: 54.94 ng/ml

Instrument :
 ECD_L
 ClientSampleId :
 PSTDCCC050



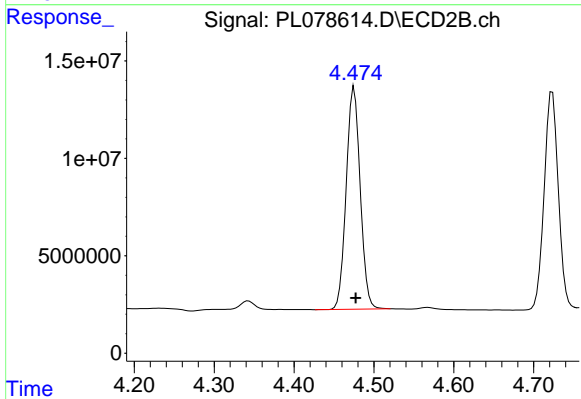
#7 delta-BHC

R.T.: 3.899 min
 Delta R.T.: -0.002 min
 Response: 166301985
 Conc: 45.67 ng/ml



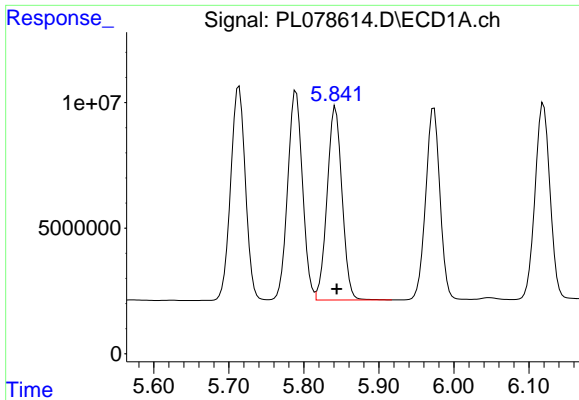
#8 Heptachlor epoxide

R.T.: 5.458 min
 Delta R.T.: 0.000 min
 Response: 118050332
 Conc: 55.61 ng/ml



#8 Heptachlor epoxide

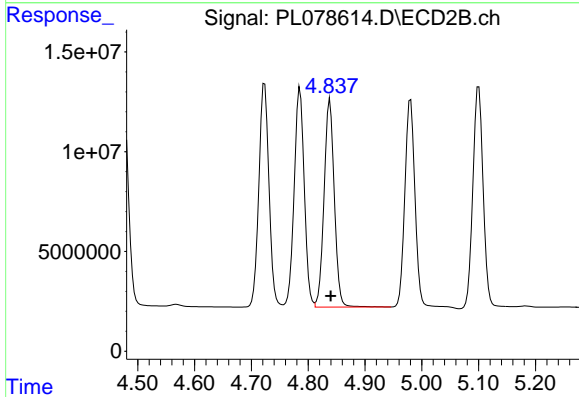
R.T.: 4.475 min
 Delta R.T.: -0.002 min
 Response: 139033094
 Conc: 46.14 ng/ml



#9 Endosulfan I

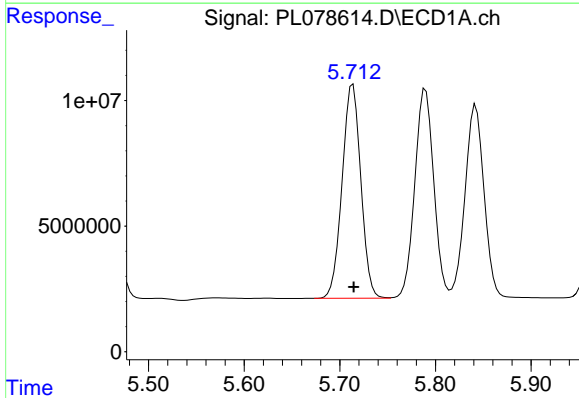
R.T.: 5.842 min
 Delta R.T.: -0.002 min
 Response: 106658052
 Conc: 49.99 ng/ml

Instrument :
 ECD_L
 ClientSampleId :
 PSTDCCC050



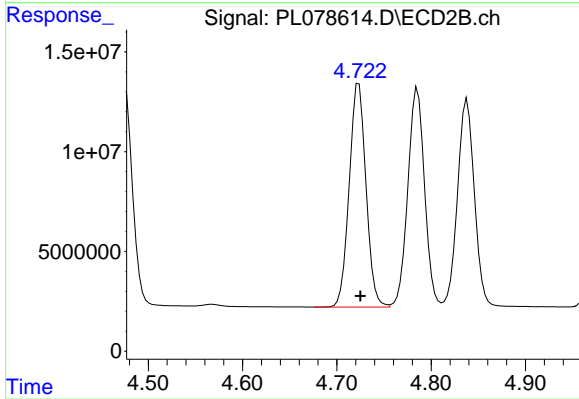
#9 Endosulfan I

R.T.: 4.838 min
 Delta R.T.: -0.002 min
 Response: 130450974
 Conc: 45.57 ng/ml



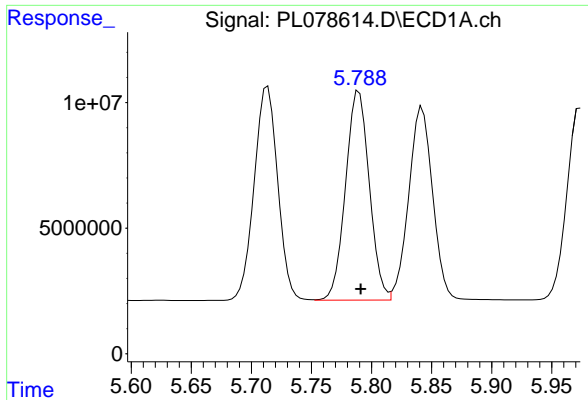
#10 gamma-Chlordane

R.T.: 5.714 min
 Delta R.T.: 0.000 min
 Response: 116211739
 Conc: 51.49 ng/ml



#10 gamma-Chlordane

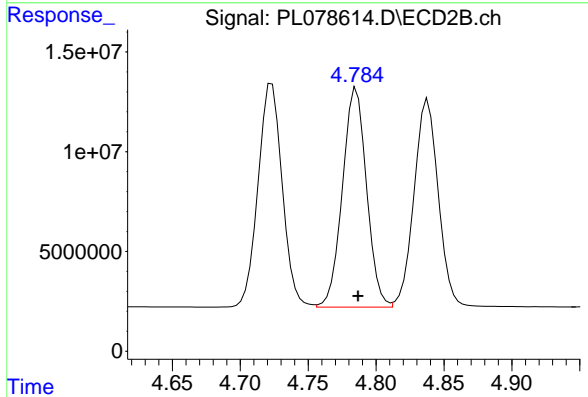
R.T.: 4.723 min
 Delta R.T.: -0.002 min
 Response: 138899183
 Conc: 45.33 ng/ml



#11 alpha-Chlordane

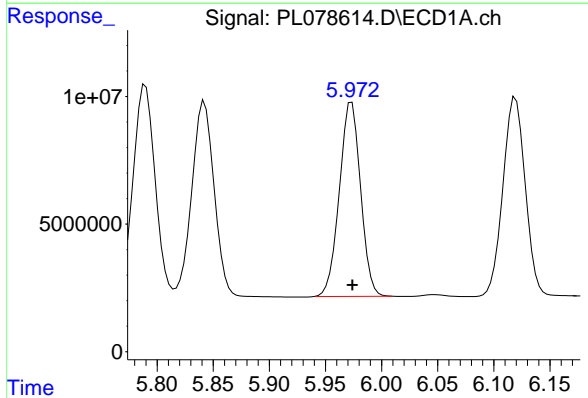
R.T.: 5.790 min
 Delta R.T.: -0.001 min
 Response: 114791589
 Conc: 49.61 ng/ml

Instrument :
 ECD_L
 ClientSampleId :
 PSTDCCC050



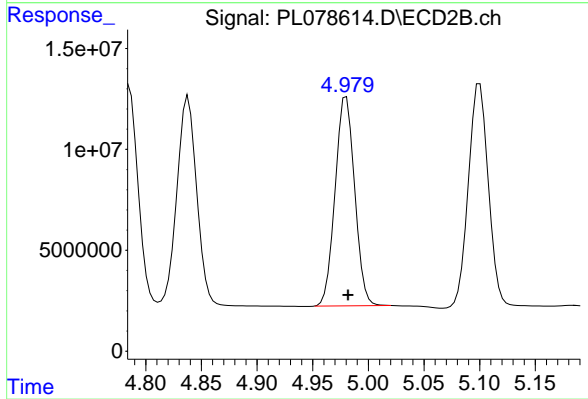
#11 alpha-Chlordane

R.T.: 4.786 min
 Delta R.T.: -0.001 min
 Response: 135774039
 Conc: 45.56 ng/ml



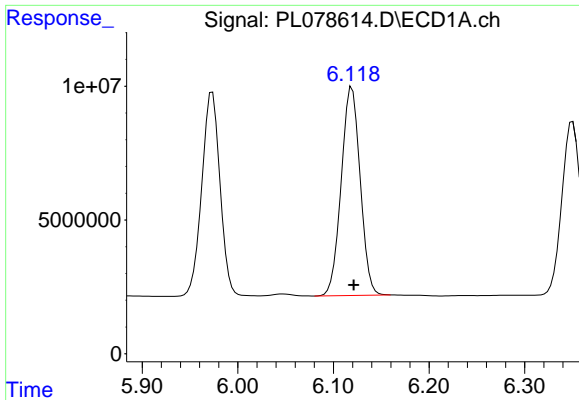
#12 4,4'-DDE

R.T.: 5.973 min
 Delta R.T.: 0.000 min
 Response: 100105392
 Conc: 50.02 ng/ml



#12 4,4'-DDE

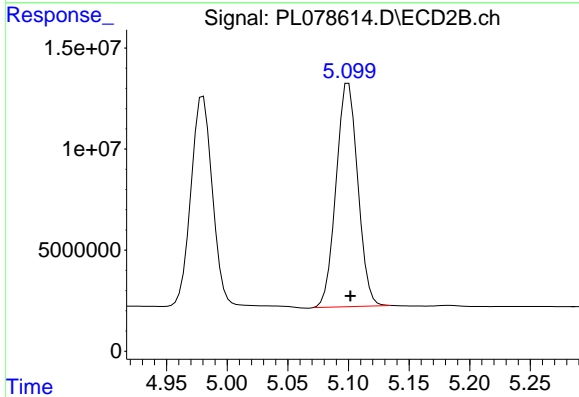
R.T.: 4.980 min
 Delta R.T.: -0.002 min
 Response: 126772111
 Conc: 46.56 ng/ml



#13 Dieldrin

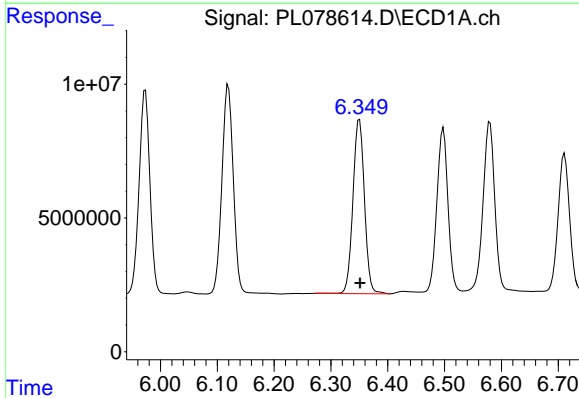
R.T.: 6.119 min
 Delta R.T.: -0.002 min
 Response: 107701866
 Conc: 49.94 ng/ml

Instrument :
 ECD_L
 ClientSampleId :
 PSTDCCC050



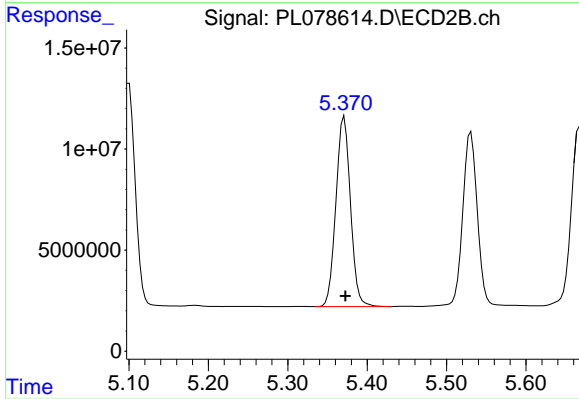
#13 Dieldrin

R.T.: 5.100 min
 Delta R.T.: -0.002 min
 Response: 137696621
 Conc: 46.47 ng/ml



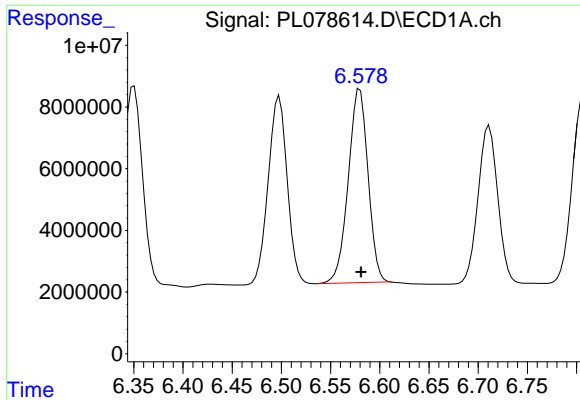
#14 Endrin

R.T.: 6.350 min
 Delta R.T.: -0.001 min
 Response: 91659642
 Conc: 48.30 ng/ml



#14 Endrin

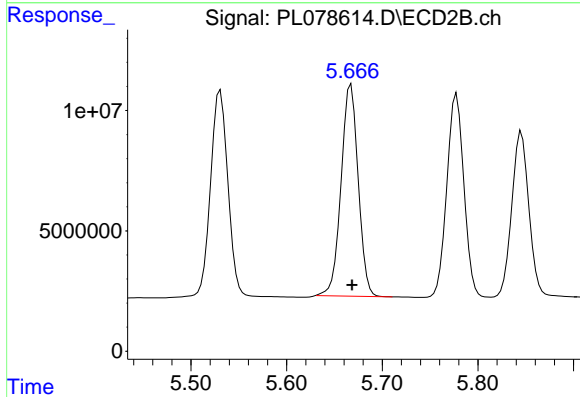
R.T.: 5.371 min
 Delta R.T.: -0.001 min
 Response: 119905201
 Conc: 46.02 ng/ml



#15 Endosulfan II

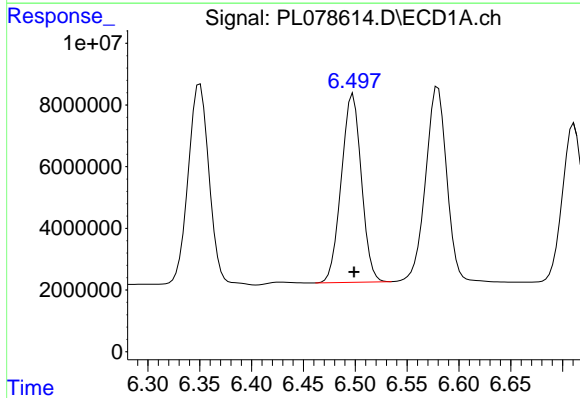
R.T.: 6.580 min
 Delta R.T.: -0.001 min
 Response: 88000992
 Conc: 46.90 ng/ml

Instrument :
 ECD_L
 ClientSampleId :
 PSTDCCC050



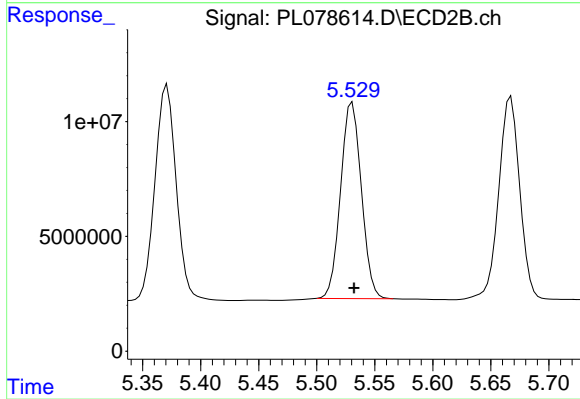
#15 Endosulfan II

R.T.: 5.667 min
 Delta R.T.: -0.001 min
 Response: 109657411
 Conc: 48.17 ng/ml



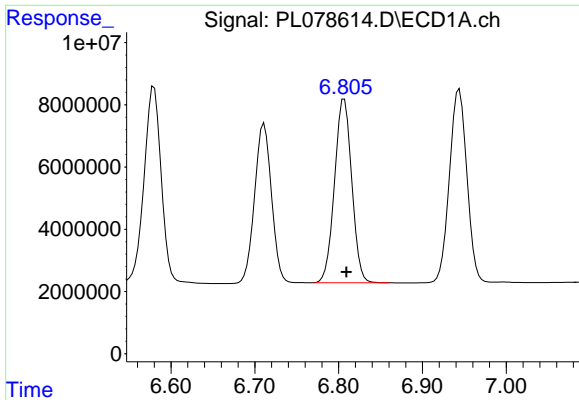
#16 4,4'-DDD

R.T.: 6.498 min
 Delta R.T.: -0.001 min
 Response: 82274620
 Conc: 49.35 ng/ml



#16 4,4'-DDD

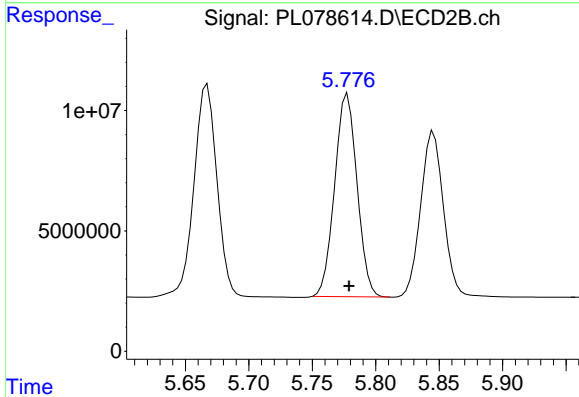
R.T.: 5.531 min
 Delta R.T.: -0.002 min
 Response: 106431567
 Conc: 48.46 ng/ml



#17 4,4'-DDT

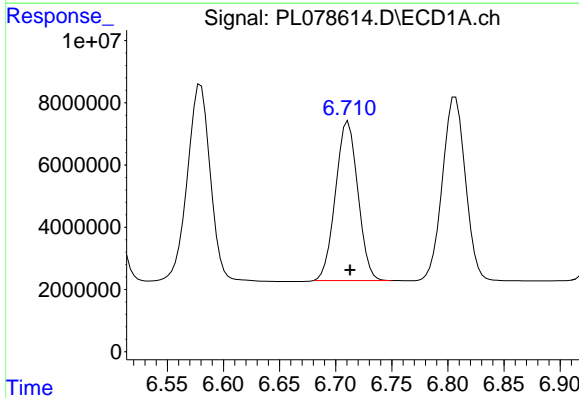
R.T.: 6.807 min
 Delta R.T.: -0.003 min
 Response: 84376089
 Conc: 47.08 ng/ml

Instrument :
 ECD_L
 ClientSampleId :
 PSTDCCC050



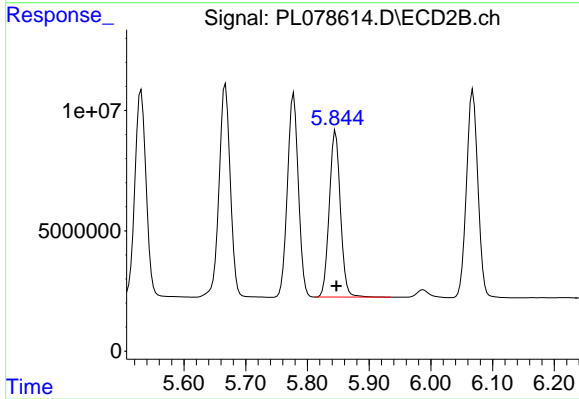
#17 4,4'-DDT

R.T.: 5.778 min
 Delta R.T.: -0.001 min
 Response: 103570245
 Conc: 47.75 ng/ml



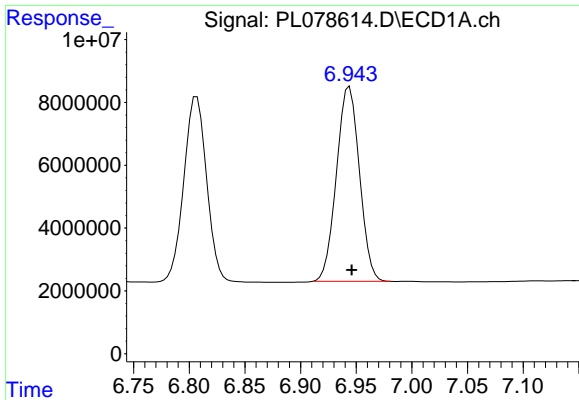
#18 Endrin aldehyde

R.T.: 6.711 min
 Delta R.T.: -0.002 min
 Response: 70975758
 Conc: 48.78 ng/ml



#18 Endrin aldehyde

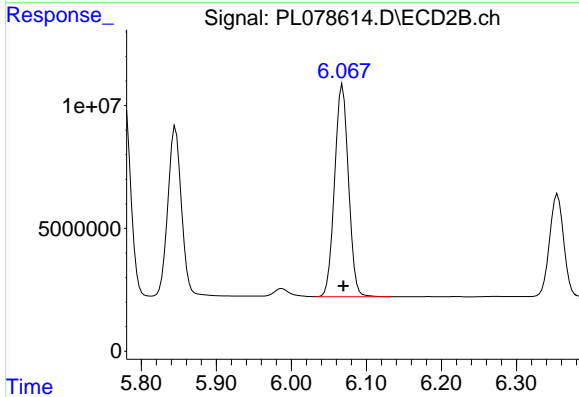
R.T.: 5.846 min
 Delta R.T.: -0.002 min
 Response: 86574031
 Conc: 46.13 ng/ml



#19 Endosulfan Sulfate

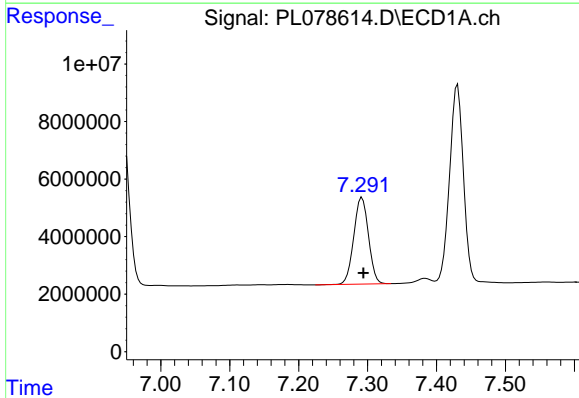
R.T.: 6.944 min
 Delta R.T.: -0.002 min
 Response: 89051482
 Conc: 48.40 ng/ml

Instrument :
 ECD_L
 ClientSampleId :
 PSTDCCC050



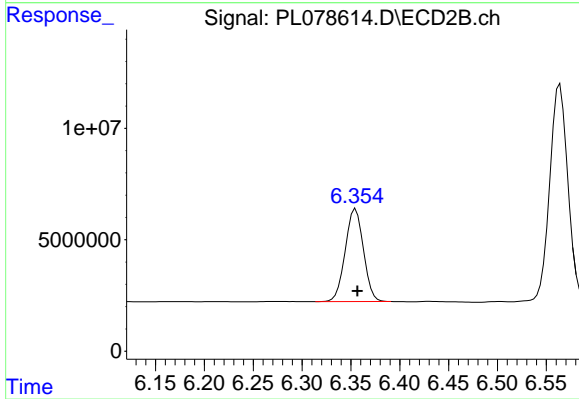
#19 Endosulfan Sulfate

R.T.: 6.068 min
 Delta R.T.: -0.001 min
 Response: 111138439
 Conc: 46.69 ng/ml



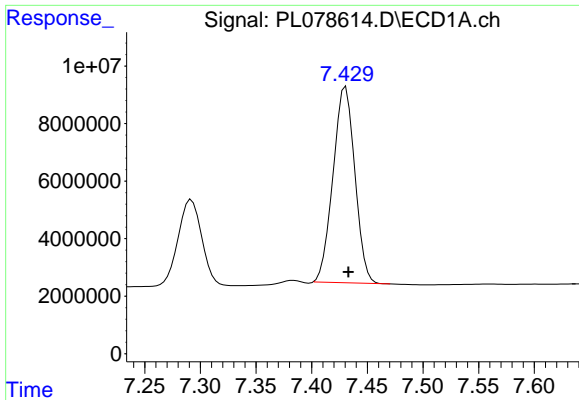
#20 Methoxychlor

R.T.: 7.292 min
 Delta R.T.: -0.002 min
 Response: 44605014
 Conc: 48.44 ng/ml



#20 Methoxychlor

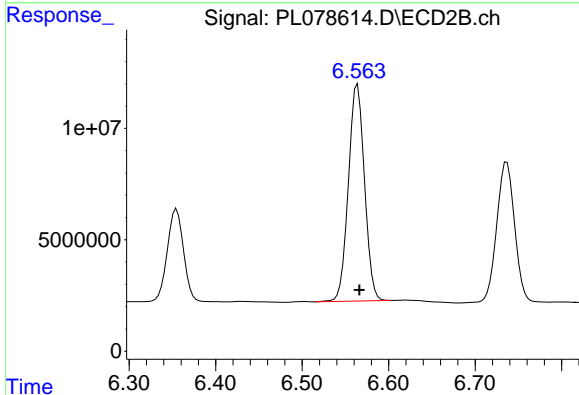
R.T.: 6.355 min
 Delta R.T.: -0.002 min
 Response: 54172087
 Conc: 47.74 ng/ml



#21 Endrin ketone

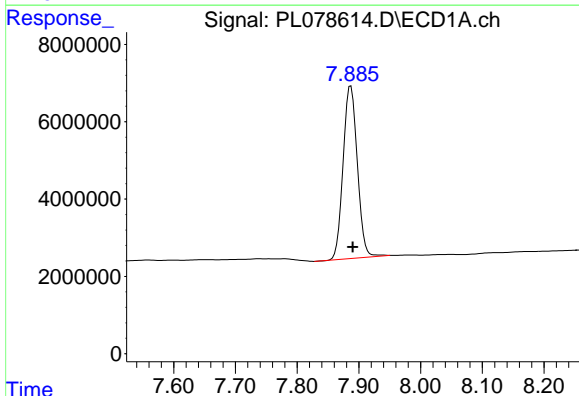
R.T.: 7.431 min
 Delta R.T.: -0.002 min
 Response: 92841866
 Conc: 49.35 ng/ml

Instrument :
 ECD_L
 ClientSampleId :
 PSTDCCC050



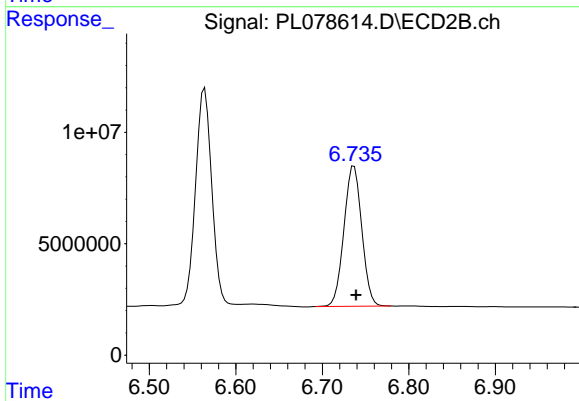
#21 Endrin ketone

R.T.: 6.564 min
 Delta R.T.: -0.002 min
 Response: 125466933
 Conc: 48.54 ng/ml



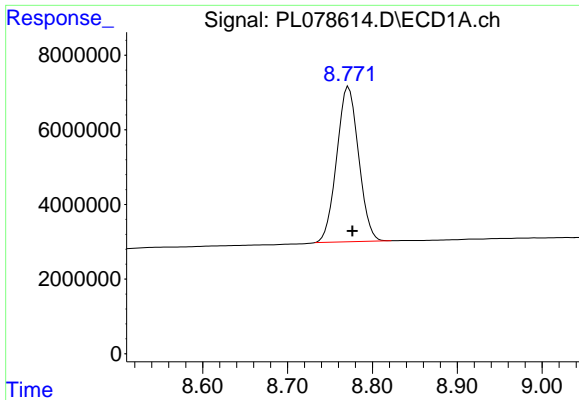
#22 Mirex

R.T.: 7.887 min
 Delta R.T.: -0.003 min
 Response: 71415066
 Conc: 48.92 ng/ml



#22 Mirex

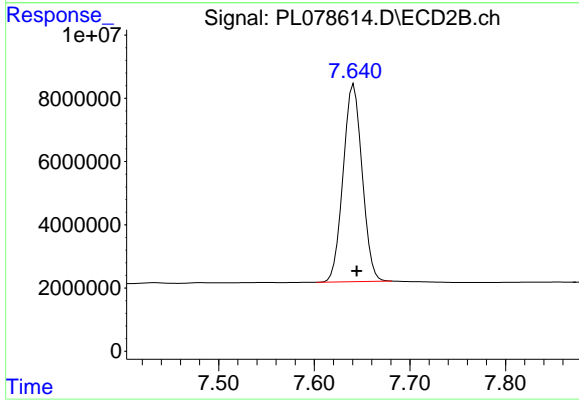
R.T.: 6.737 min
 Delta R.T.: -0.002 min
 Response: 89815066
 Conc: 45.64 ng/ml



#28 Decachlorobiphenyl

R.T.: 8.772 min
Delta R.T.: -0.005 min
Response: 74398360
Conc: 49.46 ng/ml

Instrument :
ECD_L
ClientSampleId :
PSTDCCC050



#28 Decachlorobiphenyl

R.T.: 7.641 min
Delta R.T.: -0.003 min
Response: 86603386
Conc: 45.72 ng/ml