

Data Path : Z:\pestpcbsrv\HPCHEM1\ECD_L\Data\PL102918\
 Data File : PL041488.D
 Signal(s) : Signal #1: ECD1A.ch Signal #2: ECD2B.ch
 Acq On : 30 Oct 2018 02:26
 Operator : AJ\SJ
 Sample : PSTDCCC050
 Misc :
 ALS Vial : 4 Sample Multiplier: 1

Instrument :
 ECD_L
 ClientSampleId :
 PSTDCCC050

Integration File signal 1: autoint1.e
 Integration File signal 2: autoint2.e
 Quant Time: Oct 30 04:32:32 2018
 Quant Method : Z:\pestpcbsrv\HPCHEM1\ECD_L\methods\PL102918.M
 Quant Title : GC Extractables
 QLast Update : Tue Oct 30 01:26:00 2018
 Response via : Initial Calibration
 Integrator: ChemStation

Volume Inj. : 2 µl
 Signal #1 Phase : ZB-MR2 Signal #2 Phase: ZB-MR2
 Signal #1 Info : 30M x 0.32mm x0.5 Signal #2 Info : 30M x 0.32mm x0.25µm

	Compound	RT#1	RT#2	Resp#1	Resp#2	ng/ml	ng/ml

System Monitoring Compounds							
1)	SA Tetrachlo...	3.474	4.104	310.1E6	148.4E6	48.680	48.178
28)	SA Decachlor...	8.218	9.236	289.8E6	117.5E6	43.752	45.876
Target Compounds							
2)	A alpha-BHC	3.914	4.500	480.9E6	224.0E6	49.501	48.826
3)	MA gamma-BHC...	4.198	4.789	444.5E6	205.6E6	49.753	48.498
4)	MA Heptachlor	4.495	5.304	449.3E6	195.3E6	49.021	48.027
5)	MB Aldrin	4.742	5.613	417.5E6	183.0E6	49.455	47.927
6)	B beta-BHC	4.451	4.957	183.3E6	84598321	48.642	49.257
7)	B delta-BHC	4.654	5.178	421.4E6	197.3E6	50.740	48.852
8)	B Heptachlo...	5.185	6.002	387.2E6	174.3E6	47.952	49.571
9)	A Endosulfan I	5.523	6.362	358.6E6	145.3E6	48.187	46.747
10)	B gamma-Chl...	5.411	6.236	393.6E6	162.2E6	48.331	48.036
11)	B alpha-Chl...	5.469	6.310	388.6E6	157.5E6	47.996	46.547
12)	B 4,4'-DDE	5.635	6.464	350.0E6	153.2E6	48.893	46.816
13)	MA Dieldrin	5.766	6.620	383.6E6	152.7E6	48.244	47.365
14)	MA Endrin	6.022	6.839	345.2E6	124.3E6	47.191	45.717
15)	B Endosulfa...	6.297	7.048	314.3E6	128.6E6	45.466	47.536
16)	A 4,4'-DDD	6.151	6.956	292.5E6	123.2E6	50.331	49.478
17)	MA 4,4'-DDT	6.390	7.256	276.3E6	110.2E6	45.422	43.834
18)	B Endrin al...	6.465	7.172	255.7E6	101.1E6	46.424	46.176
19)	B Endosulfa...	6.677	7.394	275.3E6	116.3E6	43.103	46.854
20)	A Methoxychlor	6.937	7.712	151.1E6	58479327	44.948	45.140
21)	B Endrin ke...	7.168	7.869	339.1E6	123.7E6	46.987	47.011

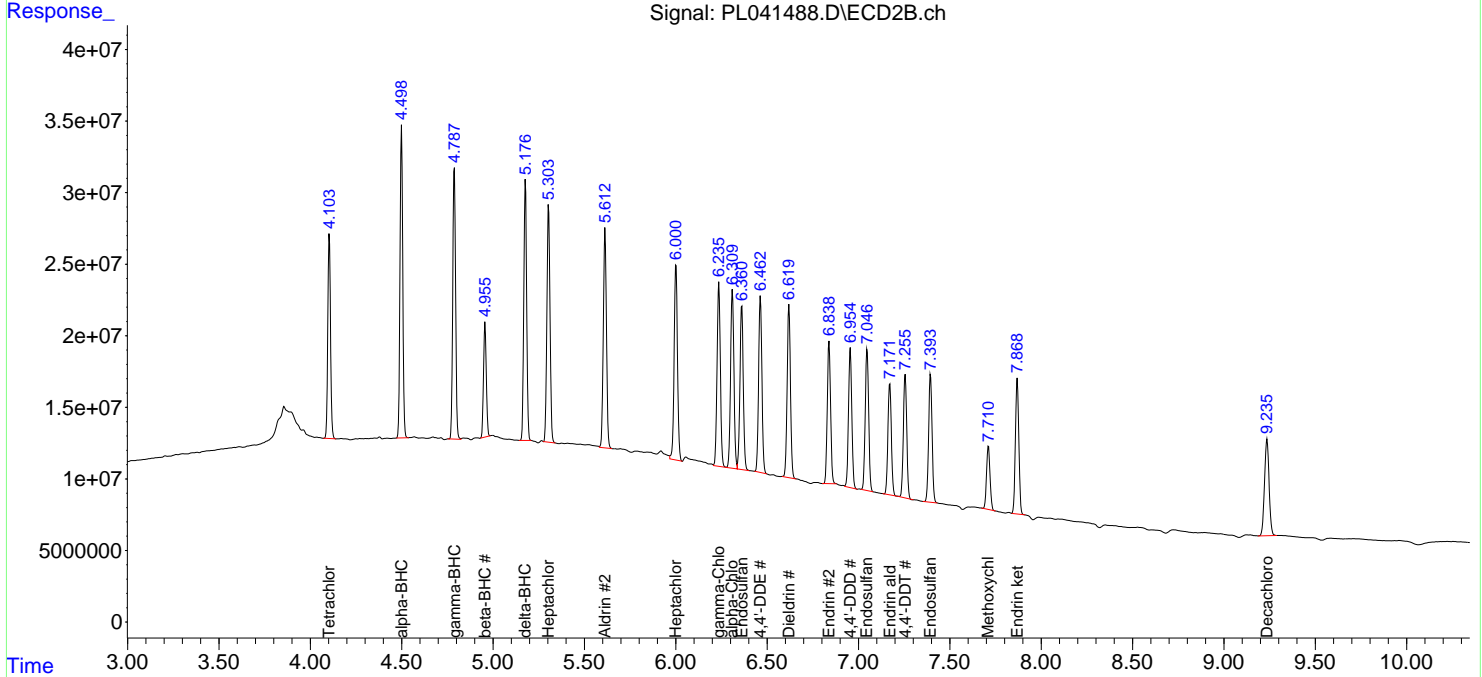
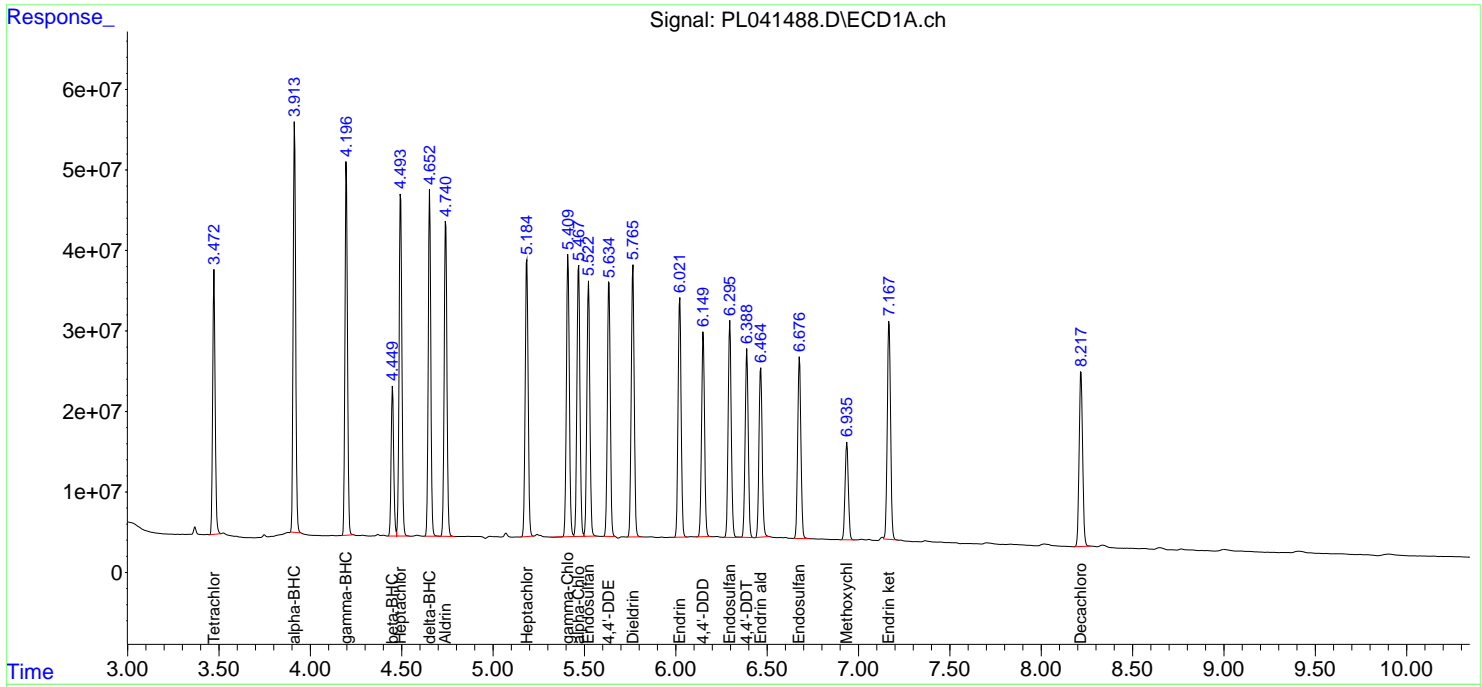
(f)=RT Delta > 1/2 Window (#)=Amounts differ by > 25% (m)=manual int.

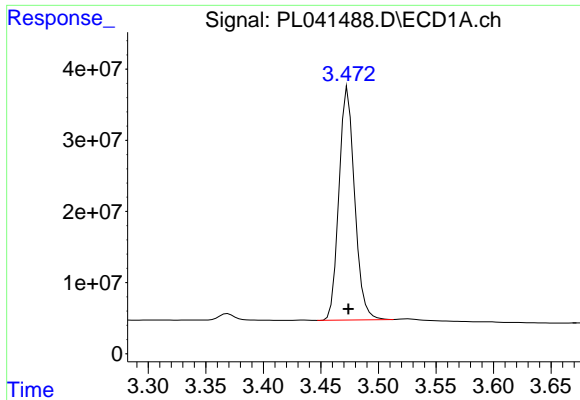
Data Path : Z:\pestpcbsrv\HPCHEM1\ECD_L\Data\PL102918\
 Data File : PL041488.D
 Signal(s) : Signal #1: ECD1A.ch Signal #2: ECD2B.ch
 Acq On : 30 Oct 2018 02:26
 Operator : AJ\SJ
 Sample : PSTDCCC050
 Misc :
 ALS Vial : 4 Sample Multiplier: 1

Instrument :
 ECD_L
 Client Sampled :
 PSTDCCC050

Integration File signal 1: autoint1.e
 Integration File signal 2: autoint2.e
 Quant Time: Oct 30 04:32:32 2018
 Quant Method : Z:\pestpcbsrv\HPCHEM1\ECD_L\methods\PL102918.M
 Quant Title : GC Extractables
 QLast Update : Tue Oct 30 01:26:00 2018
 Response via : Initial Calibration
 Integrator: ChemStation

Volume Inj. : 2 µl
 Signal #1 Phase : ZB-MR1 Signal #2 Phase: ZB-MR2
 Signal #1 Info : 30M x 0.32mm x0.5 Signal #2 Info : 30M x 0.32mm x0.25µm

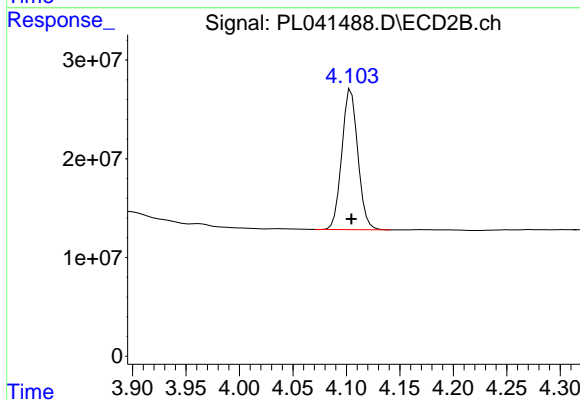




#1 Tetrachloro-m-xylene

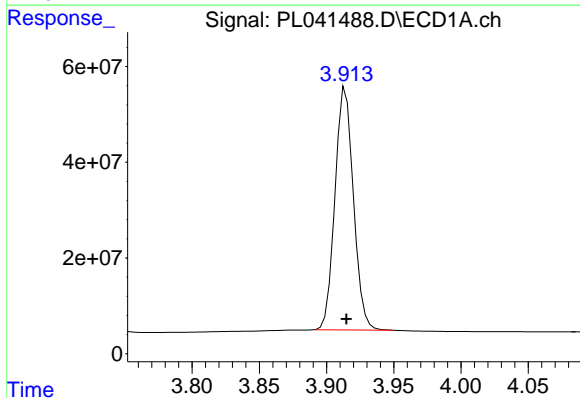
R.T.: 3.474 min
 Delta R.T.: 0.000 min
 Response: 310103068
 Conc: 48.68 ng/ml

Instrument :
 ECD_L
 ClientSampleId :
 PSTDCCC050



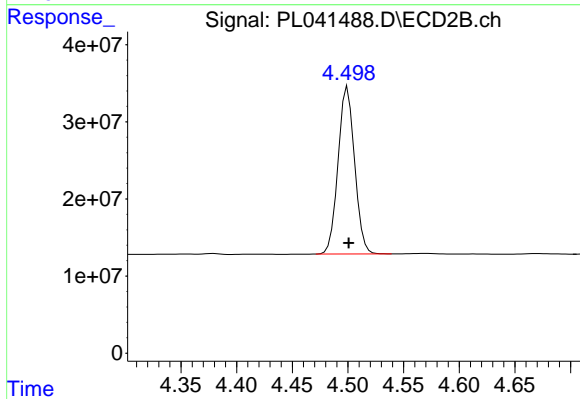
#1 Tetrachloro-m-xylene

R.T.: 4.104 min
 Delta R.T.: 0.000 min
 Response: 148399324
 Conc: 48.18 ng/ml



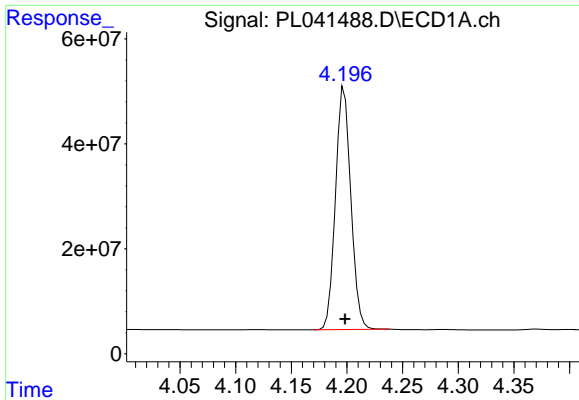
#2 alpha-BHC

R.T.: 3.914 min
 Delta R.T.: 0.000 min
 Response: 480926080
 Conc: 49.50 ng/ml



#2 alpha-BHC

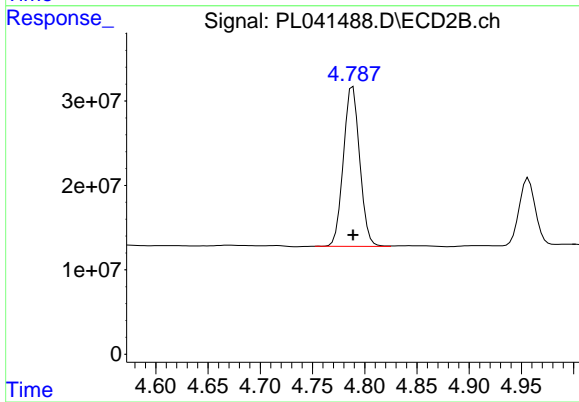
R.T.: 4.500 min
 Delta R.T.: 0.000 min
 Response: 223954093
 Conc: 48.83 ng/ml



#3 gamma-BHC (Lindane)

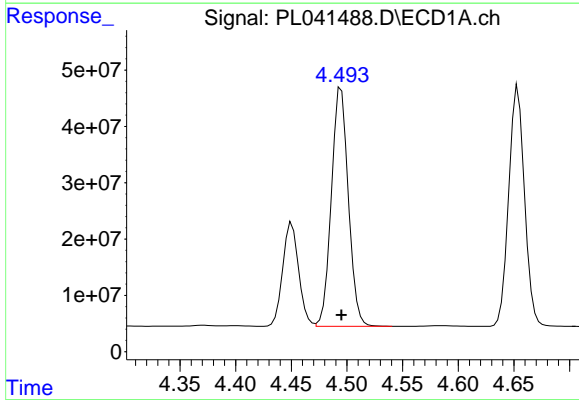
R.T.: 4.198 min
Delta R.T.: 0.000 min
Response: 444489823
Conc: 49.75 ng/ml

Instrument :
ECD_L
ClientSampleId :
PSTDCCC050



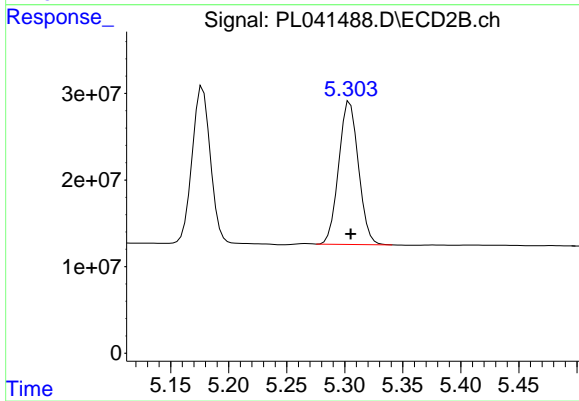
#3 gamma-BHC (Lindane)

R.T.: 4.789 min
Delta R.T.: 0.000 min
Response: 205613603
Conc: 48.50 ng/ml



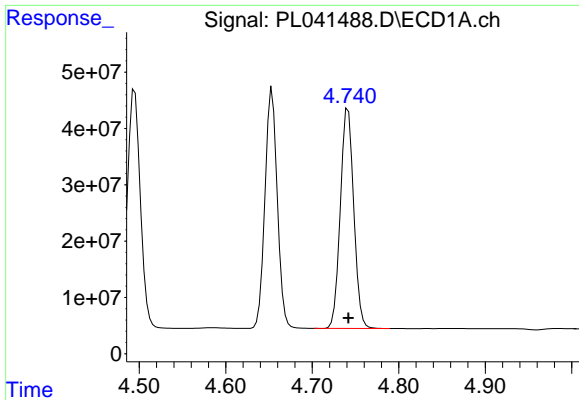
#4 Heptachlor

R.T.: 4.495 min
Delta R.T.: 0.000 min
Response: 449282205
Conc: 49.02 ng/ml



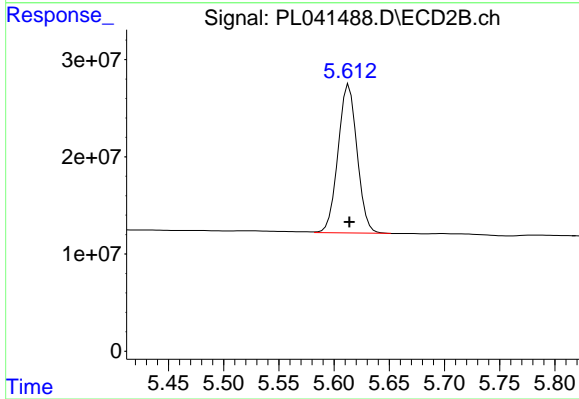
#4 Heptachlor

R.T.: 5.304 min
Delta R.T.: 0.000 min
Response: 195294144
Conc: 48.03 ng/ml

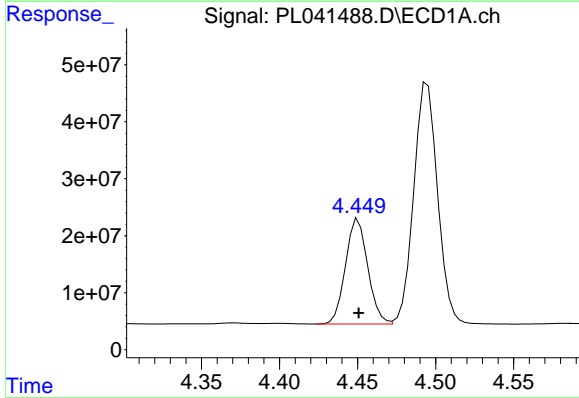


#5 Aldrin
 R.T.: 4.742 min
 Delta R.T.: 0.000 min
 Response: 417516231
 Conc: 49.46 ng/ml

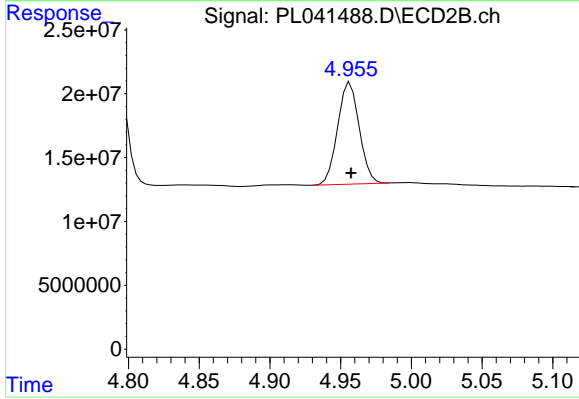
Instrument :
 ECD_L
 ClientSampleId :
 PSTDCCC050



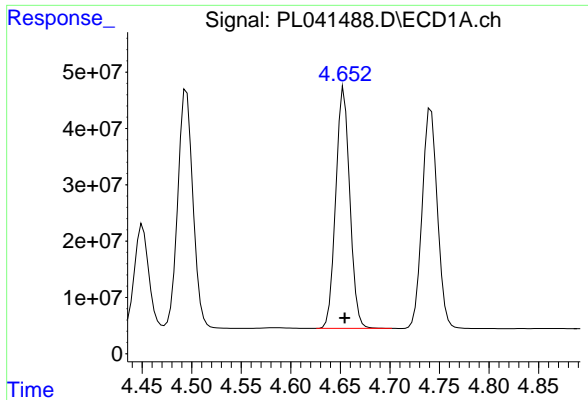
#5 Aldrin
 R.T.: 5.613 min
 Delta R.T.: 0.000 min
 Response: 183046625
 Conc: 47.93 ng/ml



#6 beta-BHC
 R.T.: 4.451 min
 Delta R.T.: 0.000 min
 Response: 183340049
 Conc: 48.64 ng/ml

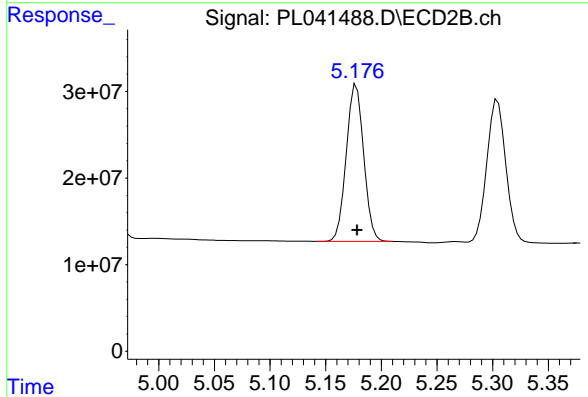


#6 beta-BHC
 R.T.: 4.957 min
 Delta R.T.: 0.000 min
 Response: 84598321
 Conc: 49.26 ng/ml

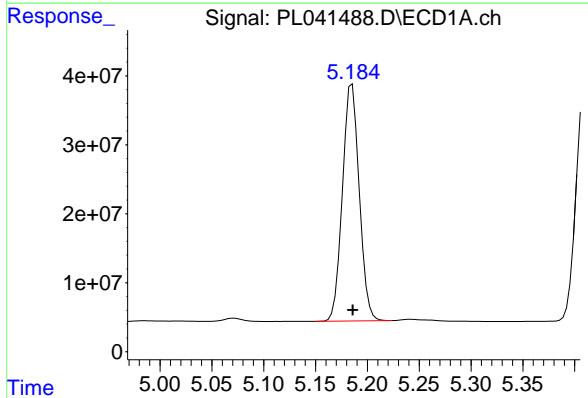


#7 delta-BHC
 R.T.: 4.654 min
 Delta R.T.: 0.000 min
 Response: 421429950
 Conc: 50.74 ng/ml

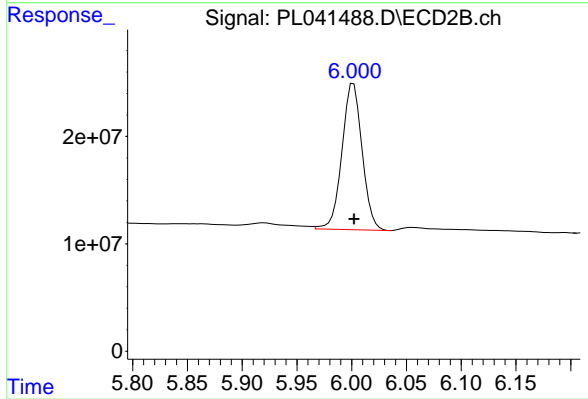
Instrument :
 ECD_L
 ClientSampleId :
 PSTDCCC050



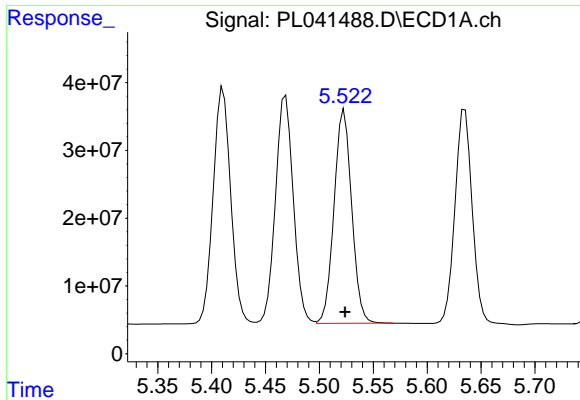
#7 delta-BHC
 R.T.: 5.178 min
 Delta R.T.: 0.000 min
 Response: 197277238
 Conc: 48.85 ng/ml



#8 Heptachlor epoxide
 R.T.: 5.185 min
 Delta R.T.: 0.000 min
 Response: 387180502
 Conc: 47.95 ng/ml

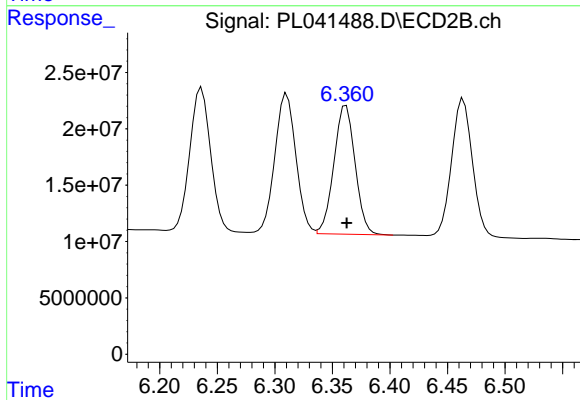


#8 Heptachlor epoxide
 R.T.: 6.002 min
 Delta R.T.: 0.000 min
 Response: 174272427
 Conc: 49.57 ng/ml

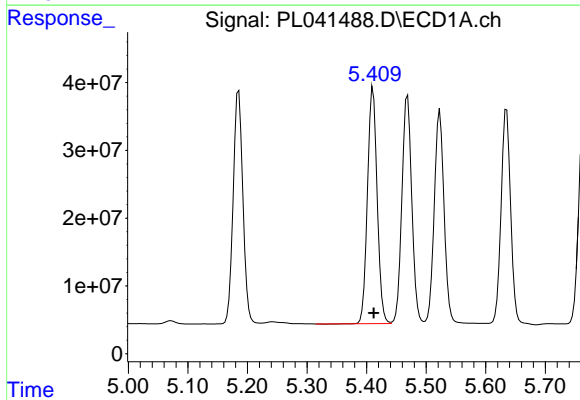


#9 Endosulfan I
 R.T.: 5.523 min
 Delta R.T.: 0.000 min
 Response: 358579258
 Conc: 48.19 ng/ml

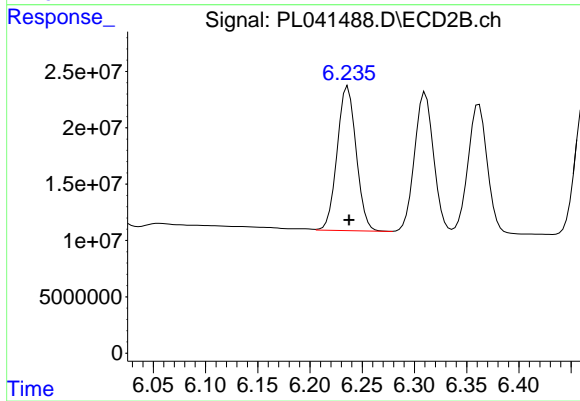
Instrument :
 ECD_L
 ClientSampleId :
 PSTDCCC050



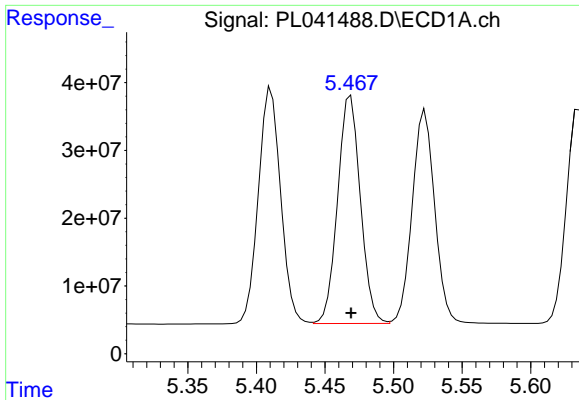
#9 Endosulfan I
 R.T.: 6.362 min
 Delta R.T.: 0.000 min
 Response: 145287644
 Conc: 46.75 ng/ml



#10 gamma-Chlordane
 R.T.: 5.411 min
 Delta R.T.: -0.001 min
 Response: 393585207
 Conc: 48.33 ng/ml

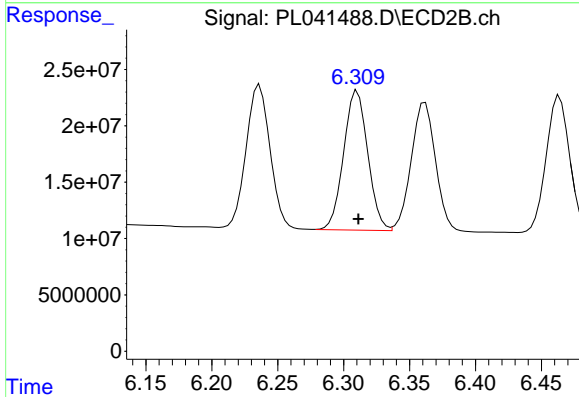


#10 gamma-Chlordane
 R.T.: 6.236 min
 Delta R.T.: -0.001 min
 Response: 162163224
 Conc: 48.04 ng/ml

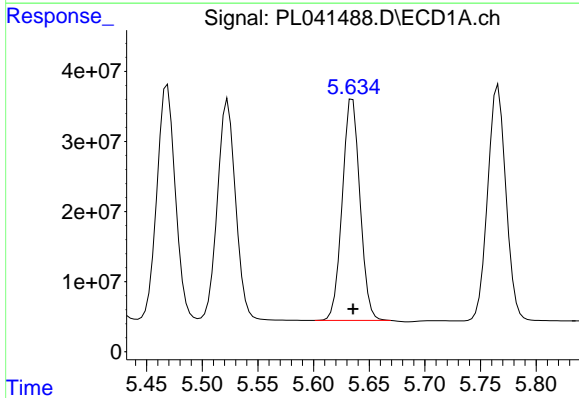


#11 alpha-Chlordane
 R.T.: 5.469 min
 Delta R.T.: 0.000 min
 Response: 388582974
 Conc: 48.00 ng/ml

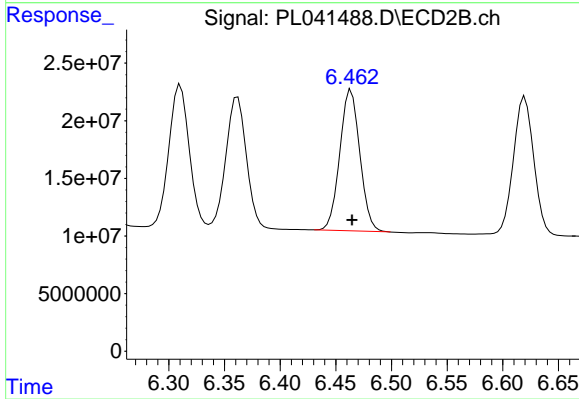
Instrument :
 ECD_L
 ClientSampleId :
 PSTDCCC050



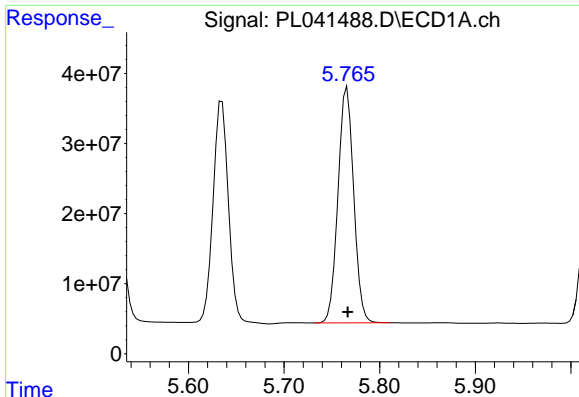
#11 alpha-Chlordane
 R.T.: 6.310 min
 Delta R.T.: 0.000 min
 Response: 157535654
 Conc: 46.55 ng/ml



#12 4,4'-DDE
 R.T.: 5.635 min
 Delta R.T.: 0.000 min
 Response: 349978337
 Conc: 48.89 ng/ml



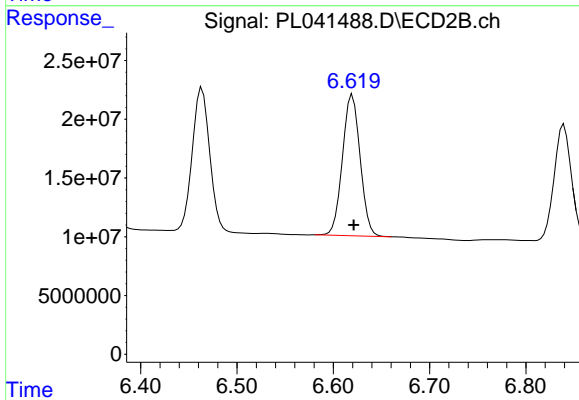
#12 4,4'-DDE
 R.T.: 6.464 min
 Delta R.T.: 0.000 min
 Response: 153203322
 Conc: 46.82 ng/ml



#13 Dieldrin

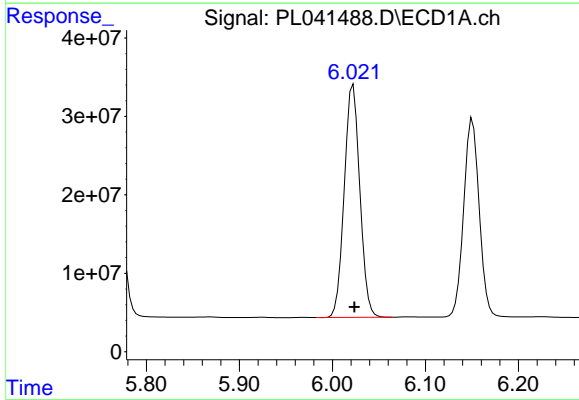
R.T.: 5.766 min
 Delta R.T.: 0.000 min
 Response: 383644192
 Conc: 48.24 ng/ml

Instrument :
 ECD_L
 ClientSampleId :
 PSTDCCC050



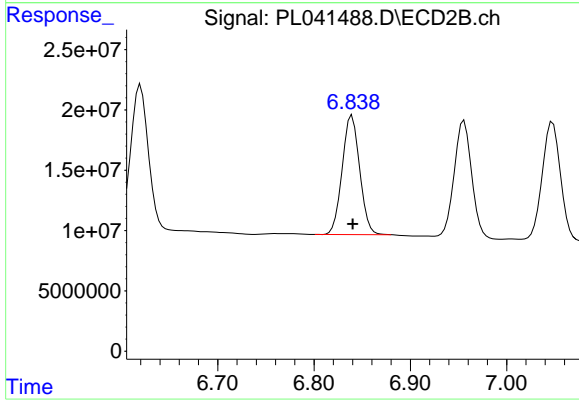
#13 Dieldrin

R.T.: 6.620 min
 Delta R.T.: -0.001 min
 Response: 152679144
 Conc: 47.37 ng/ml



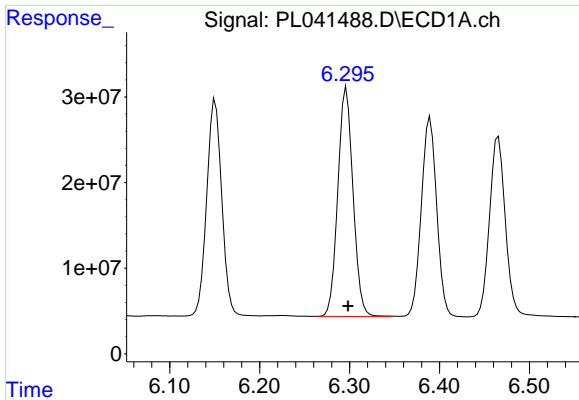
#14 Endrin

R.T.: 6.022 min
 Delta R.T.: -0.001 min
 Response: 345165415
 Conc: 47.19 ng/ml



#14 Endrin

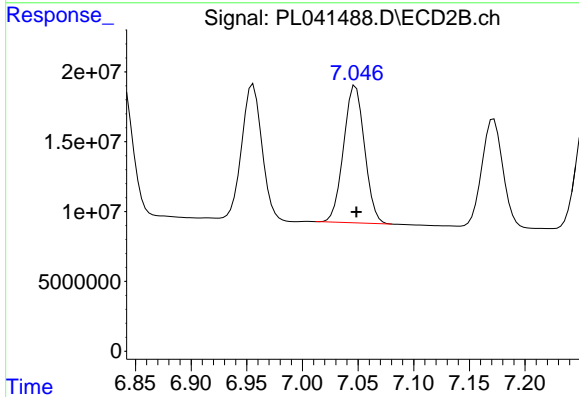
R.T.: 6.839 min
 Delta R.T.: 0.000 min
 Response: 124284313
 Conc: 45.72 ng/ml



#15 Endosulfan II

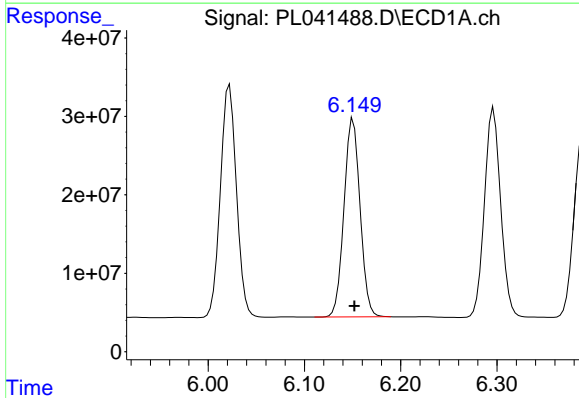
R.T.: 6.297 min
 Delta R.T.: -0.002 min
 Response: 314256833
 Conc: 45.47 ng/ml

Instrument :
 ECD_L
 ClientSampleId :
 PSTDCCC050



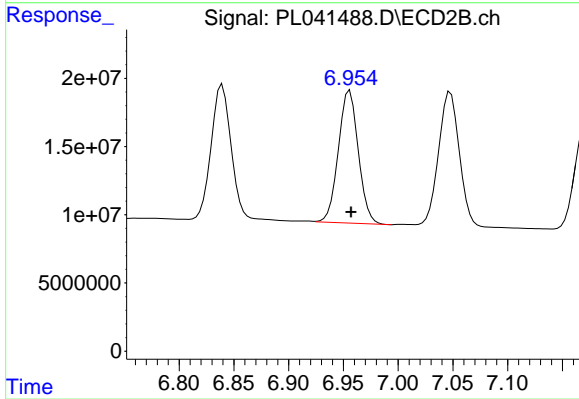
#15 Endosulfan II

R.T.: 7.048 min
 Delta R.T.: 0.000 min
 Response: 128600790
 Conc: 47.54 ng/ml



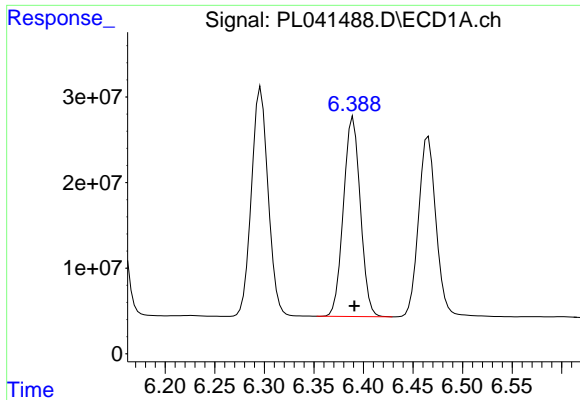
#16 4,4'-DDD

R.T.: 6.151 min
 Delta R.T.: -0.001 min
 Response: 292468512
 Conc: 50.33 ng/ml



#16 4,4'-DDD

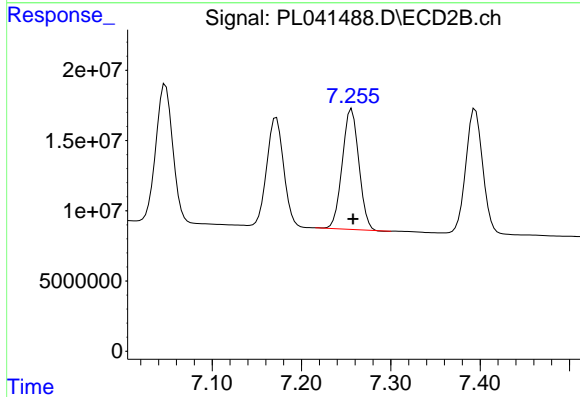
R.T.: 6.956 min
 Delta R.T.: -0.001 min
 Response: 123193166
 Conc: 49.48 ng/ml



#17 4,4'-DDT

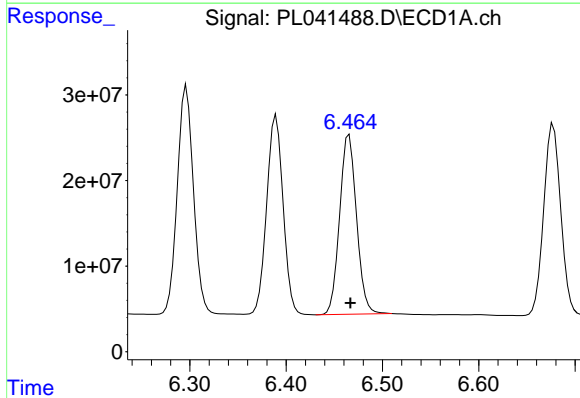
R.T.: 6.390 min
 Delta R.T.: -0.001 min
 Response: 276335863
 Conc: 45.42 ng/ml

Instrument :
 ECD_L
 ClientSampleId :
 PSTDCCC050



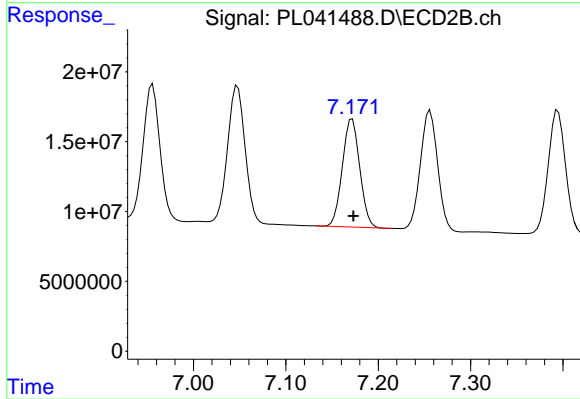
#17 4,4'-DDT

R.T.: 7.256 min
 Delta R.T.: -0.001 min
 Response: 110200523
 Conc: 43.83 ng/ml



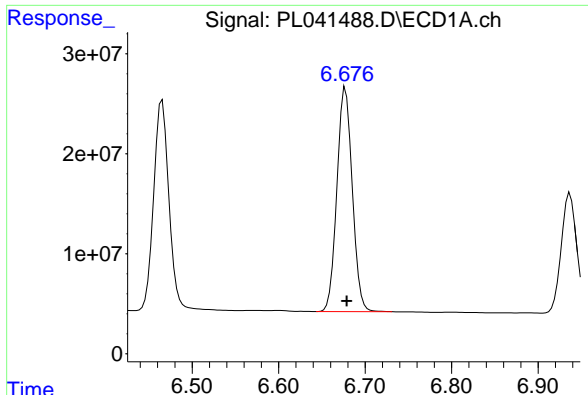
#18 Endrin aldehyde

R.T.: 6.465 min
 Delta R.T.: -0.001 min
 Response: 255691674
 Conc: 46.42 ng/ml



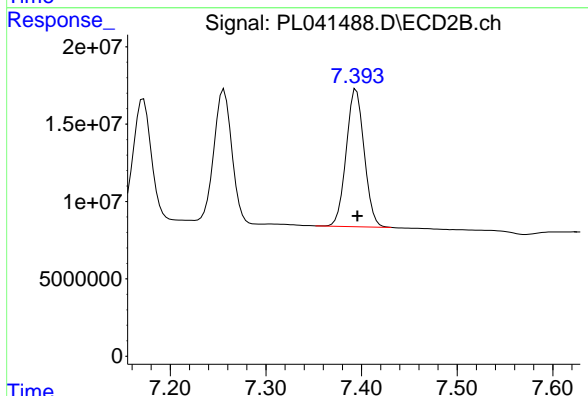
#18 Endrin aldehyde

R.T.: 7.172 min
 Delta R.T.: -0.001 min
 Response: 101072743
 Conc: 46.18 ng/ml

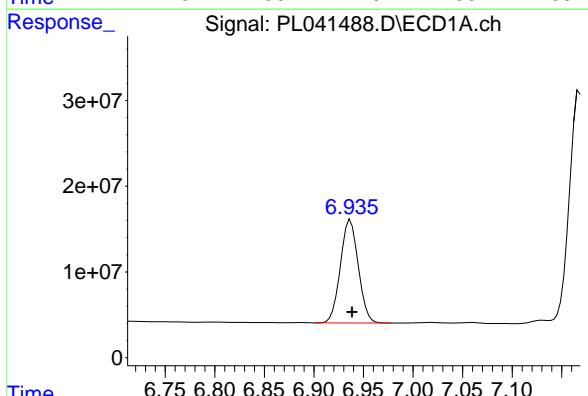


#19 Endosulfan Sulfate
 R.T.: 6.677 min
 Delta R.T.: -0.002 min
 Response: 275267684
 Conc: 43.10 ng/ml

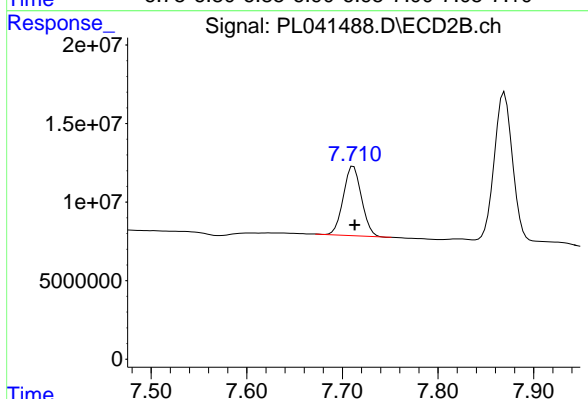
Instrument :
 ECD_L
 ClientSampleId :
 PSTDCCC050



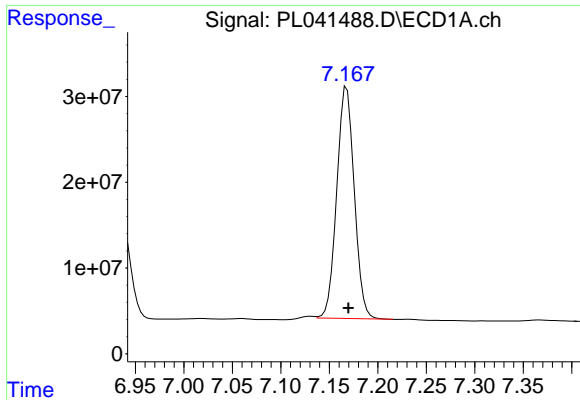
#19 Endosulfan Sulfate
 R.T.: 7.394 min
 Delta R.T.: -0.001 min
 Response: 116273248
 Conc: 46.85 ng/ml



#20 Methoxychlor
 R.T.: 6.937 min
 Delta R.T.: -0.002 min
 Response: 151093692
 Conc: 44.95 ng/ml



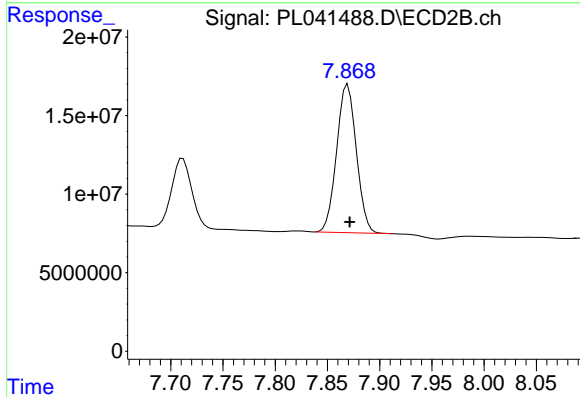
#20 Methoxychlor
 R.T.: 7.712 min
 Delta R.T.: -0.002 min
 Response: 58479327
 Conc: 45.14 ng/ml



#21 Endrin ketone

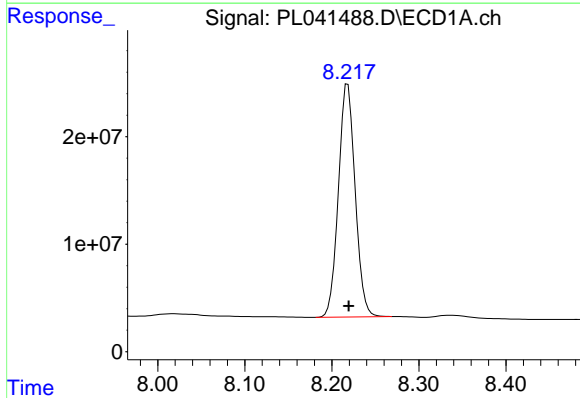
R.T.: 7.168 min
Delta R.T.: -0.002 min
Response: 339134881
Conc: 46.99 ng/ml

Instrument :
ECD_L
ClientSampleId :
PSTDCCC050



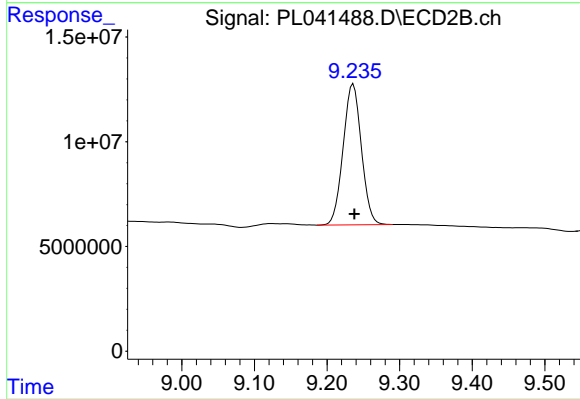
#21 Endrin ketone

R.T.: 7.869 min
Delta R.T.: -0.002 min
Response: 123717021
Conc: 47.01 ng/ml



#28 Decachlorobiphenyl

R.T.: 8.218 min
Delta R.T.: -0.001 min
Response: 289814465
Conc: 43.75 ng/ml



#28 Decachlorobiphenyl

R.T.: 9.236 min
Delta R.T.: -0.002 min
Response: 117540573
Conc: 45.88 ng/ml